

County: 20

# RMS Interchange Information

Print Form

Interchange Number: 8001

Bureau of Maintenance & Operations  
Asset Management Division



Interchange Name: PA 285 & I-79

Intersecting SR's: I-79 & PA 285 Brooks Crossing Rd

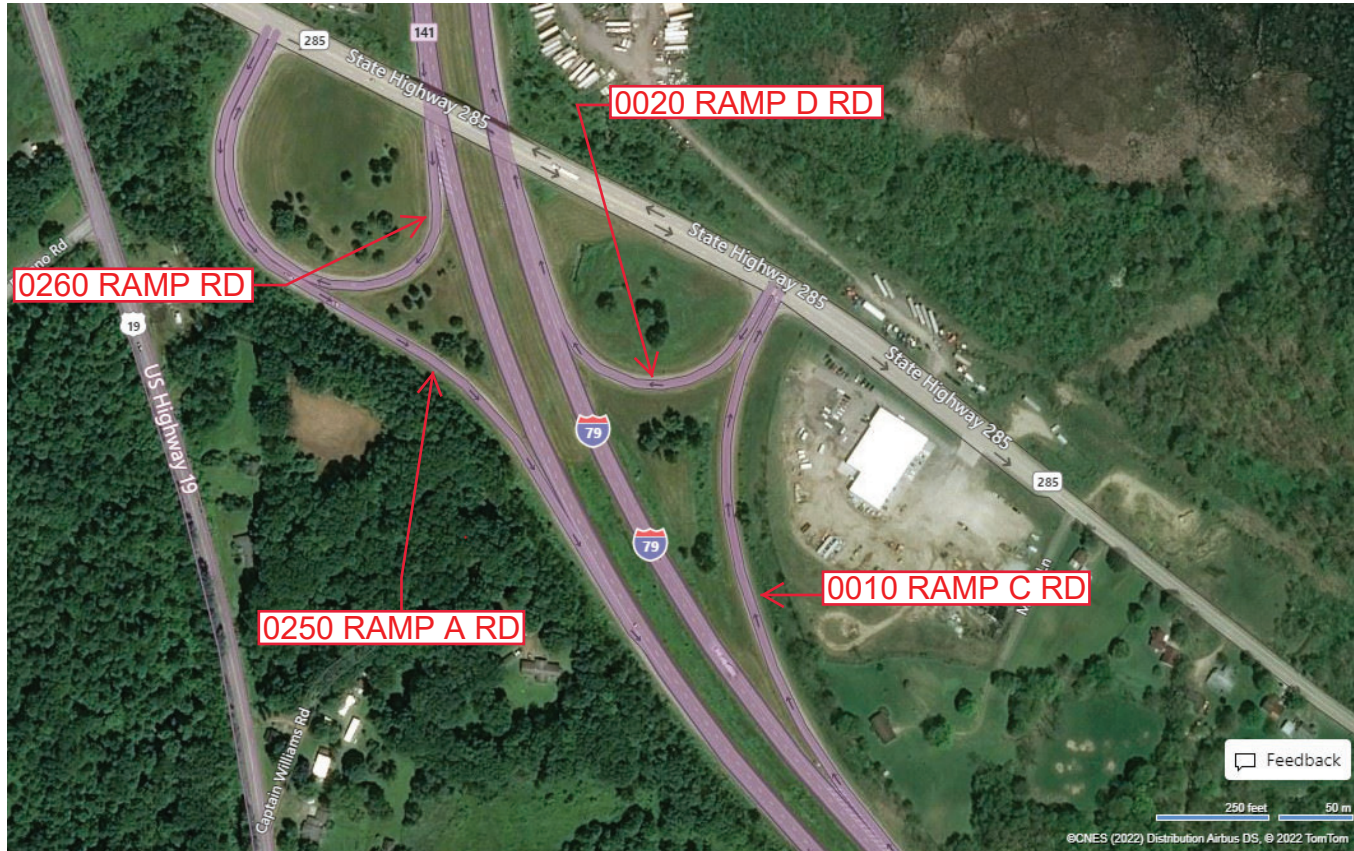
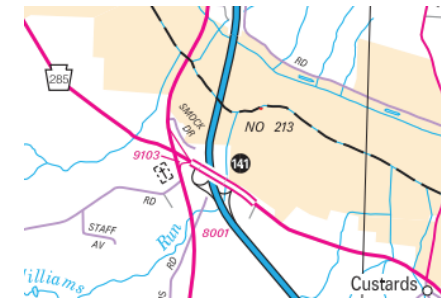
Ramp Segment Number and Ramp Segment Length Information:

Segment	Length	Segment	Length	Segment	Length	Segment	Length
0010	1186						
0020	0577						
0250	1431						
0260	1096						

Primary Route Interchange Exit Number: 141

Secondary Route Interchange Exit Number

PennDOT Type 10 Map View:



Feedback

250 feet 50 m

©CNES (2022) Distribution Airbus DS, © 2022 TomTom

© 2022 Microsoft

Last Date Modified: May 2, 2022

County: 20

# RMS Interchange Information

Print Form

Bureau of Maintenance & Operations  
Asset Management Division



Interchange Number: 8003

Interchange Name: MEADVILLE INT

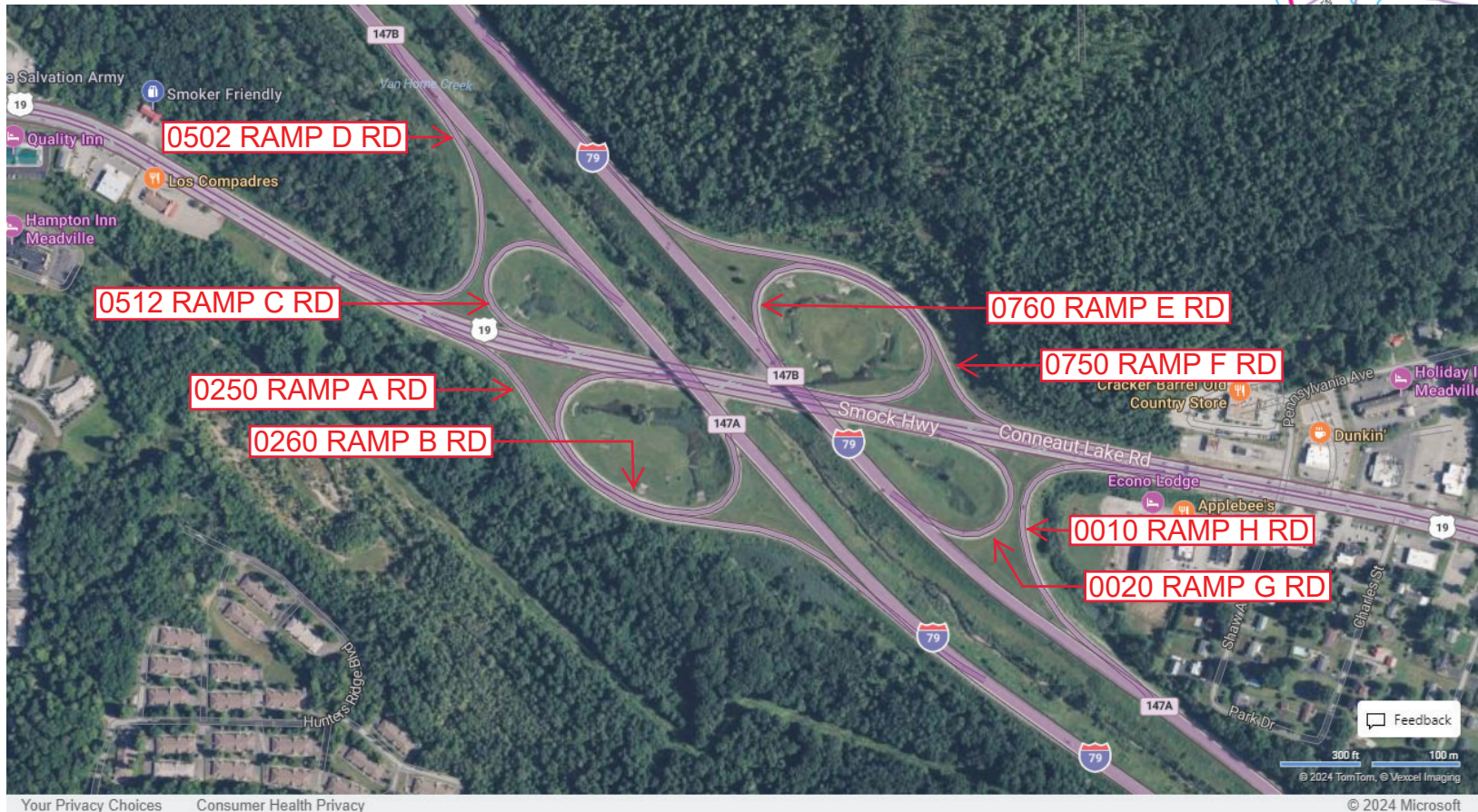
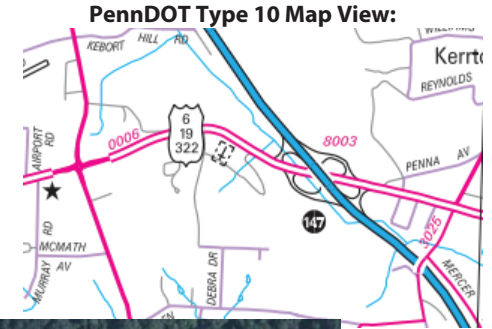
Intersecting SR's: I-79 & US 6

Ramp Segment Number and Ramp Segment Length Information:

Segment	Length	Segment	Length	Segment	Length	Segment	Length
0010	0778	0512	0638				
0020	0602	0750	1566				
0250	1800	0760	1306				
0260	1299						
0502	0920						

Primary Route Interchange Exit Number: 147A

Secondary Route Interchange Exit Number: 147B



Your Privacy Choices Consumer Health Privacy

Last Date Modified: Jul 30, 2024

County: 20

# RMS Interchange Information

Print Form

Bureau of Maintenance & Operations  
Asset Management Division



Interchange Number: 8005

Interchange Name: SAEGERTOWN

Intersecting SR's: I-79 & PA 198 Reservoir Rd

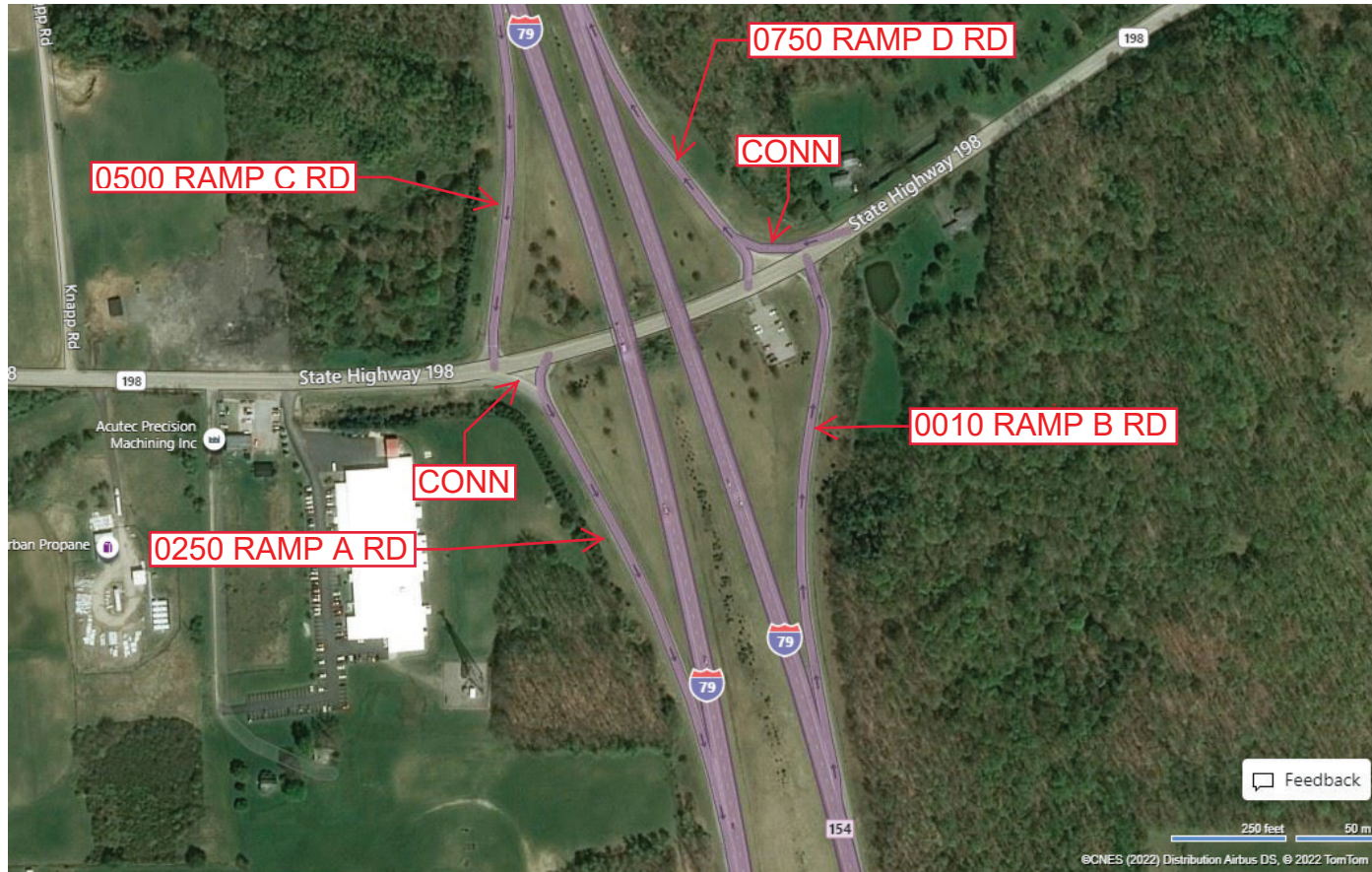
Ramp Segment Number and Ramp Segment Length Information:

Segment	Length	Segment	Length	Segment	Length	Segment	Length
0010	0964						
0250	0939						
0500	0815						
0750	0658						

Primary Route Interchange Exit Number: 154

Secondary Route Interchange Exit Number

PennDOT Type 10 Map View:



Feedback

250 Feet 50 m

©CNES (2022) Distribution Airbus DS, © 2022 TomTom

Last Date Modified: May 3, 2022

County: 20

# RMS Interchange Information

Print Form

Bureau of Maintenance & Operations  
Asset Management Division



Interchange Number: 9101

Interchange Name: HARMONBURG

Intersecting SR's: PA 18 & PA 618

Ramp Segment Number and Ramp Segment Length Information:

Segment	Length	Segment	Length	Segment	Length	Segment	Length
0010	0272						
0020	0242						

Primary Route Interchange Exit Number

Secondary Route Interchange Exit Number

PennDOT Type 10 Map View:



Last Date Modified: Jan 7, 2025

County: 20

# RMS Interchange Information

Print Form

Bureau of Maintenance & Operations  
Asset Management Division



Interchange Number: 9103

Interchange Name: US 19 & PA 285

Intersecting SR's: US 19 Perry Hw & PA 285

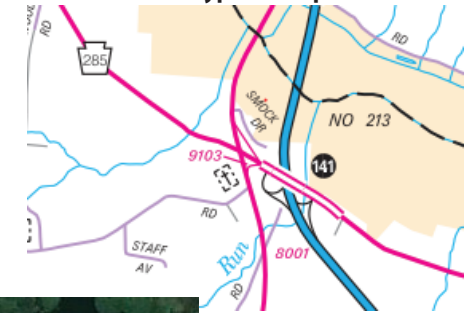
Ramp Segment Number and Ramp Segment Length Information:

Segment	Length	Segment	Length	Segment	Length	Segment	Length
0010	0358						

Primary Route  
Interchange Exit  
Number

Secondary Route  
Interchange Exit  
Number

PennDOT Type 10 Map View:



Last Date Modified:

May 3, 2022

County: 20

# RMS Interchange Information

Bureau of Maintenance & Operations  
Asset Management Division

Print Form



Interchange Number: 9104

Interchange Name: US 6 WYE

Intersecting SR's: US 6 Main St & Church St/Venango Av

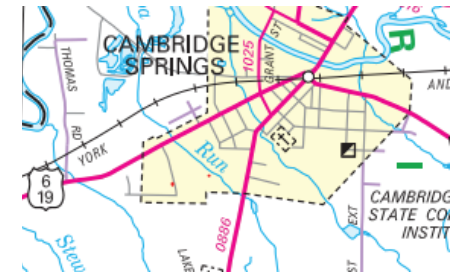
Ramp Segment Number and Ramp Segment Length Information:

Segment	Length	Segment	Length	Segment	Length	Segment	Length
0010	0219						

Primary Route Interchange Exit Number

Secondary Route Interchange Exit Number

PennDOT Type 10 Map View:



Feedback

100 feet 408 25 m

©CNES (2022) Distribution Airbus DS, © 2022 TomTom

© 2022 Microsoft

Last Date Modified: May 3, 2022

County: 20

# RMS Interchange Information

Bureau of Maintenance & Operations  
Asset Management Division

Print Form



Interchange Number: 9105

Interchange Name: MEADVILLE WYE

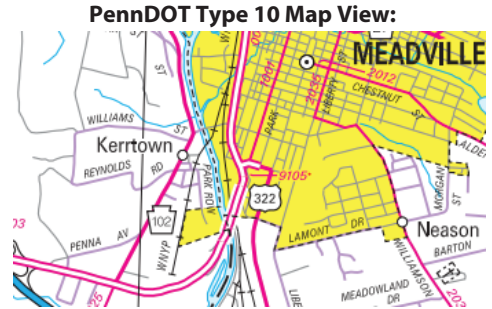
Intersecting SR's: US 6 French Creek Py, US 322 Linden St & SR 1001 Park Av

Ramp Segment Number and Ramp Segment Length Information:

Segment	Length	Segment	Length	Segment	Length	Segment	Length
0010	0358						

Primary Route Interchange Exit Number

Secondary Route Interchange Exit Number



Last Date Modified: May 4, 2022

County: 20

# RMS Interchange Information

Print Form

Bureau of Maintenance & Operations  
Asset Management Division



Interchange Number: 9201

Interchange Name: CUSSEWANGO TWP REST AREA

Intersecting SR's: I-79 SB

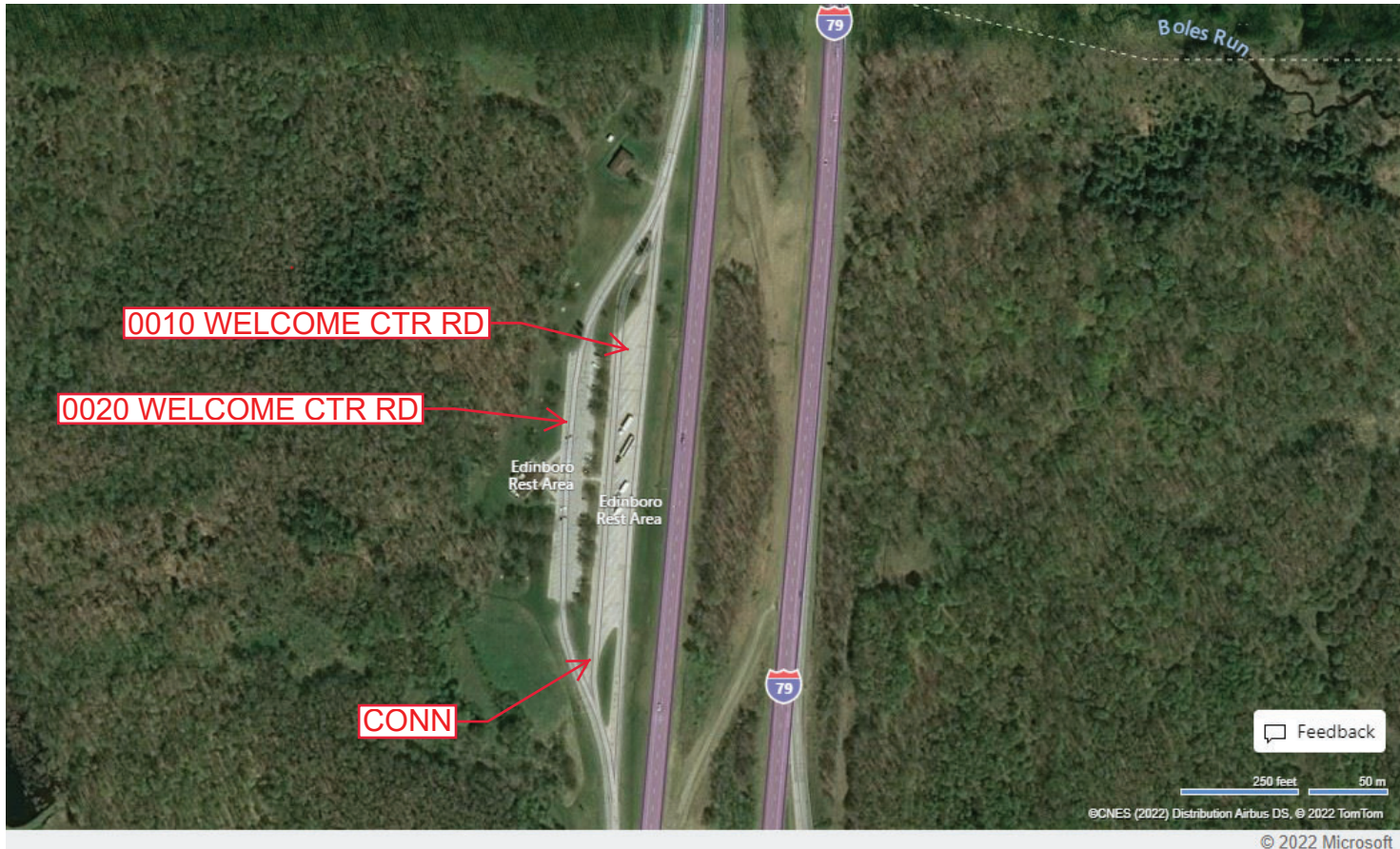
Ramp Segment Number and Ramp Segment Length Information:

Segment	Length	Segment	Length	Segment	Length	Segment	Length
0010	2227						
0020	1145						

Primary Route Interchange Exit Number

Secondary Route Interchange Exit Number

PennDOT Type 10 Map View:



Feedback

250 feet 50 m

©CNES (2022) Distribution Airbus DS, © 2022 TomTom

© 2022 Microsoft

Last Date Modified:

May 4, 2022



County: 20

# RMS Interchange Information

Bureau of Maintenance & Operations  
Asset Management Division

Print Form



Interchange Number: 9202

Interchange Name: CUSSEWANGO TWP REST AREA

Intersecting SR's: I-79 NB

Ramp Segment Number and Ramp Segment Length Information:

Segment	Length	Segment	Length	Segment	Length	Segment	Length
0010	2025						
0020	0966						

Primary Route Interchange Exit Number

Secondary Route Interchange Exit Number

PennDOT Type 10 Map View:



Feedback

250 feet 50m

©CNES (2022) Distribution Airbus DS, © 2022 TomTom

© 2022 Microsoft

Last Date Modified:

May 4, 2022

County: 20

# RMS Interchange Information

Bureau of Maintenance & Operations  
Asset Management Division

Print Form



Interchange Number: 9401

Interchange Name: BALDWIN ST EXT

Intersecting SR's: US 6 French Creek Py & SR 2037 Baldwin St Ext

Ramp Segment Number and Ramp Segment Length Information:

Segment	Length	Segment	Length	Segment	Length	Segment	Length
0010	1729						

Primary Route Interchange Exit Number

Secondary Route Interchange Exit Number

PennDOT Type 10 Map View:



Feedback

500 feet 100 m

©CNES (2022) Distribution Airbus DS, © 2022 TomTom

© 2022 Microsoft

Last Date Modified: May 4, 2022

County: 20

# RMS Interchange Information

Print Form

Bureau of Maintenance & Operations  
Asset Management Division



Interchange Number: 9502

Interchange Name: SAEGERTOWN PARK & RIDE

Intersecting SR's: PA 198

Ramp Segment Number and Ramp Segment Length Information:

Segment	Length	Segment	Length	Segment	Length	Segment	Length
0010	0160						

Primary Route Interchange Exit Number

Secondary Route Interchange Exit Number

PennDOT Type 10 Map View:



0010 SAEGERTOWN PARK & RIDE

Feedback

50 feet 20 m

©CNES (2022) Distribution Airbus DS, © 2022 TomTom

© 2022 Microsoft

Last Date Modified:

May 4, 2022