

County: 25

RMS Interchange Information

Print Form

Bureau of Maintenance & Operations
Asset Management Division



Interchange Number: 8001

Interchange Name: ALBION & EDINBORO

Intersecting SR's: I-79 & US 6 State St

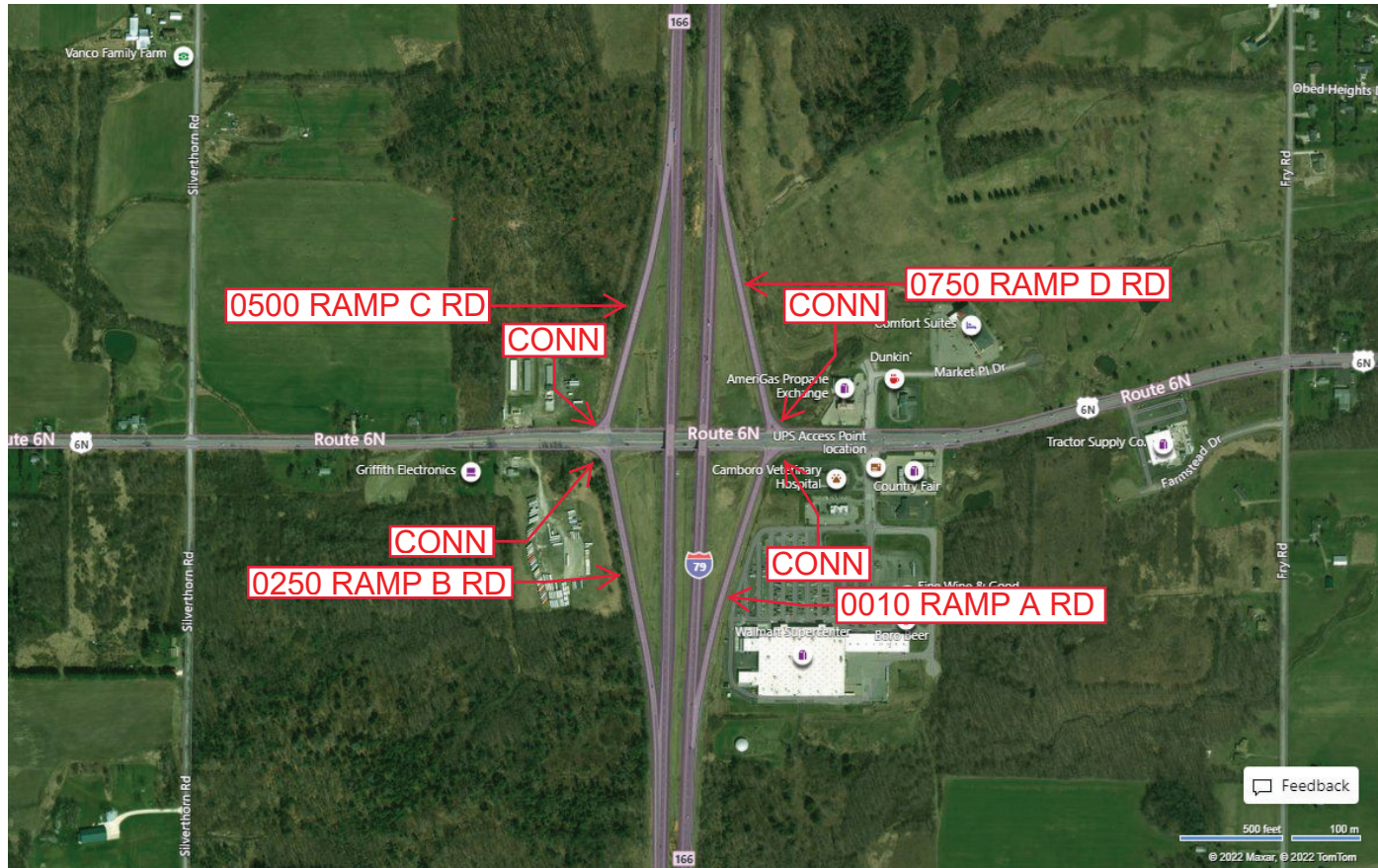
Ramp Segment Number and Ramp Segment Length Information:

Segment	Length	Segment	Length	Segment	Length	Segment	Length
0010	1290						
0250	1370						
0500	1339						
0750	1364						

Primary Route Interchange Exit Number: 166

Secondary Route Interchange Exit Number

PennDOT Type 10 Map View:



Feedback

500 feet 100 m

© 2022 Maxar, © 2022 TomTom

© 2022 Microsoft

Last Date Modified:

May 4, 2022

County: 25

RMS Interchange Information

Bureau of Maintenance & Operations
Asset Management Division

Print Form



Interchange Number: 8003

Interchange Name: MCKEAN INT

Intersecting SR's: I-79 & SR 3020 West Rd

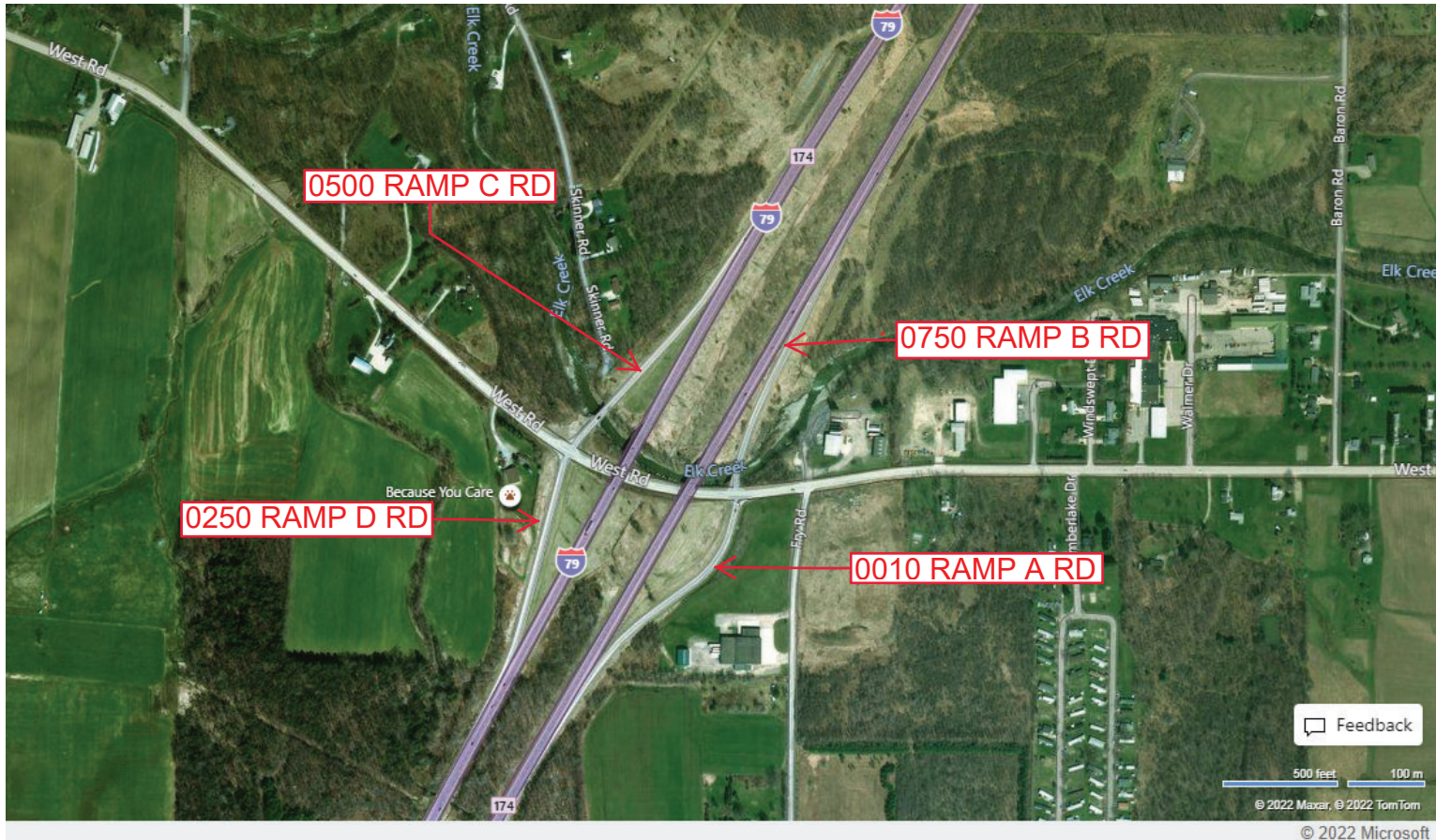
Ramp Segment Number and Ramp Segment Length Information:

Segment	Length	Segment	Length	Segment	Length	Segment	Length
0010	1055						
0250	0961						
0500	0968						
0750	1126						

Primary Route Interchange Exit Number: 174

Secondary Route Interchange Exit Number

PennDOT Type 10 Map View:



Feedback

500 feet 100 m

© 2022 Maxar, © 2022 TomTom

© 2022 Microsoft

Last Date Modified: May 5, 2022

County: 25

RMS Interchange Information

Bureau of Maintenance & Operations
Asset Management Division

Print Form



Interchange Number: 8004

Interchange Name: WEST SPRINGFIELD INT

Intersecting SR's: I-90 & SR 3006 RT 6N Rd

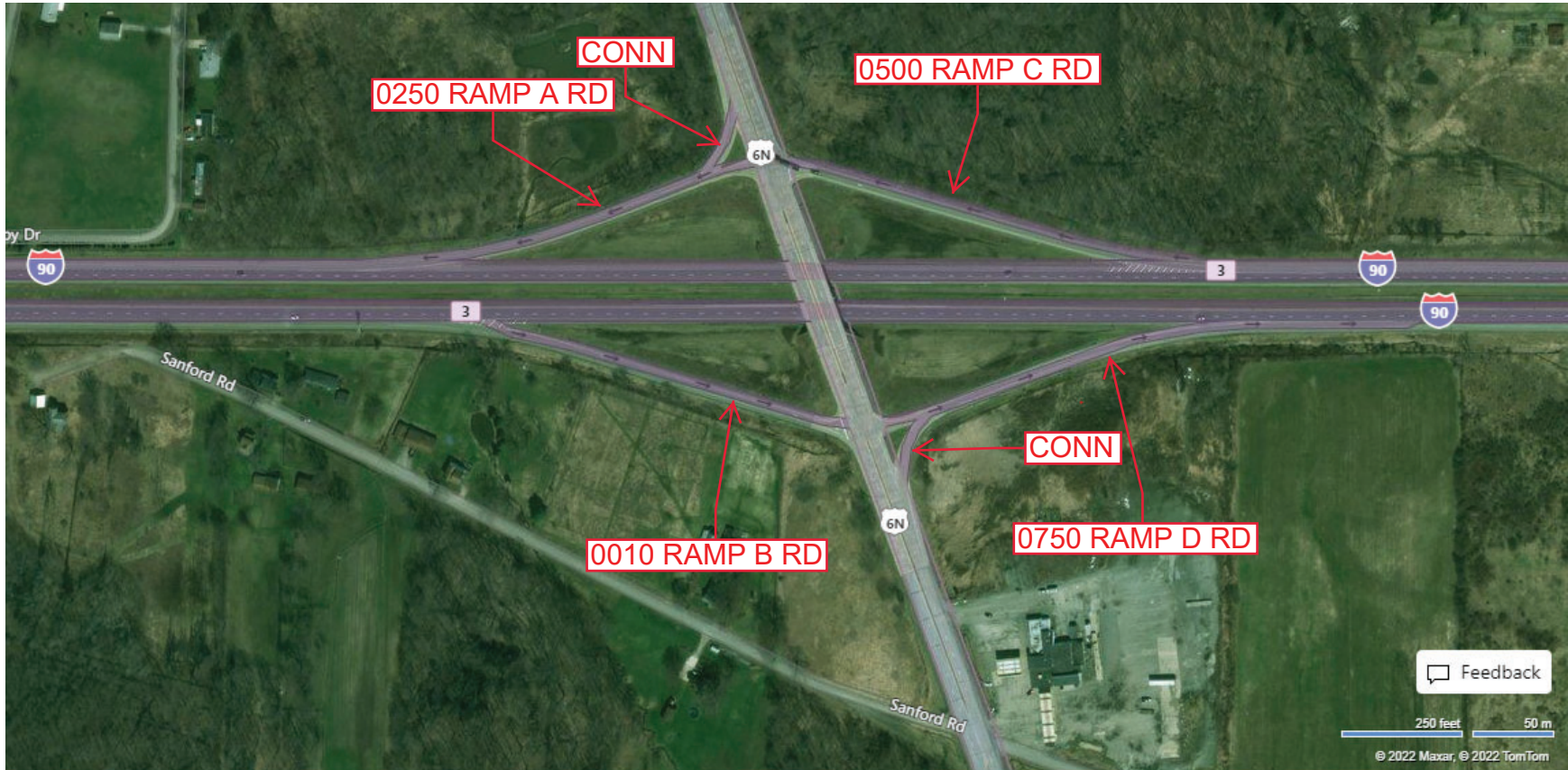
Ramp Segment Number and Ramp Segment Length Information:

Segment	Length	Segment	Length	Segment	Length	Segment	Length
0010	0764						
0250	0656						
0500	0769						
0750	0653						

Primary Route Interchange Exit Number: 3

Secondary Route Interchange Exit Number:

PennDOT Type 10 Map View:



Last Date Modified: May 6, 2022

County: 25

RMS Interchange Information

Print Form

Bureau of Maintenance & Operations
Asset Management Division



Interchange Number: 8005

Interchange Name: I-79 & I-90

Intersecting SR's: I-79 & I-90

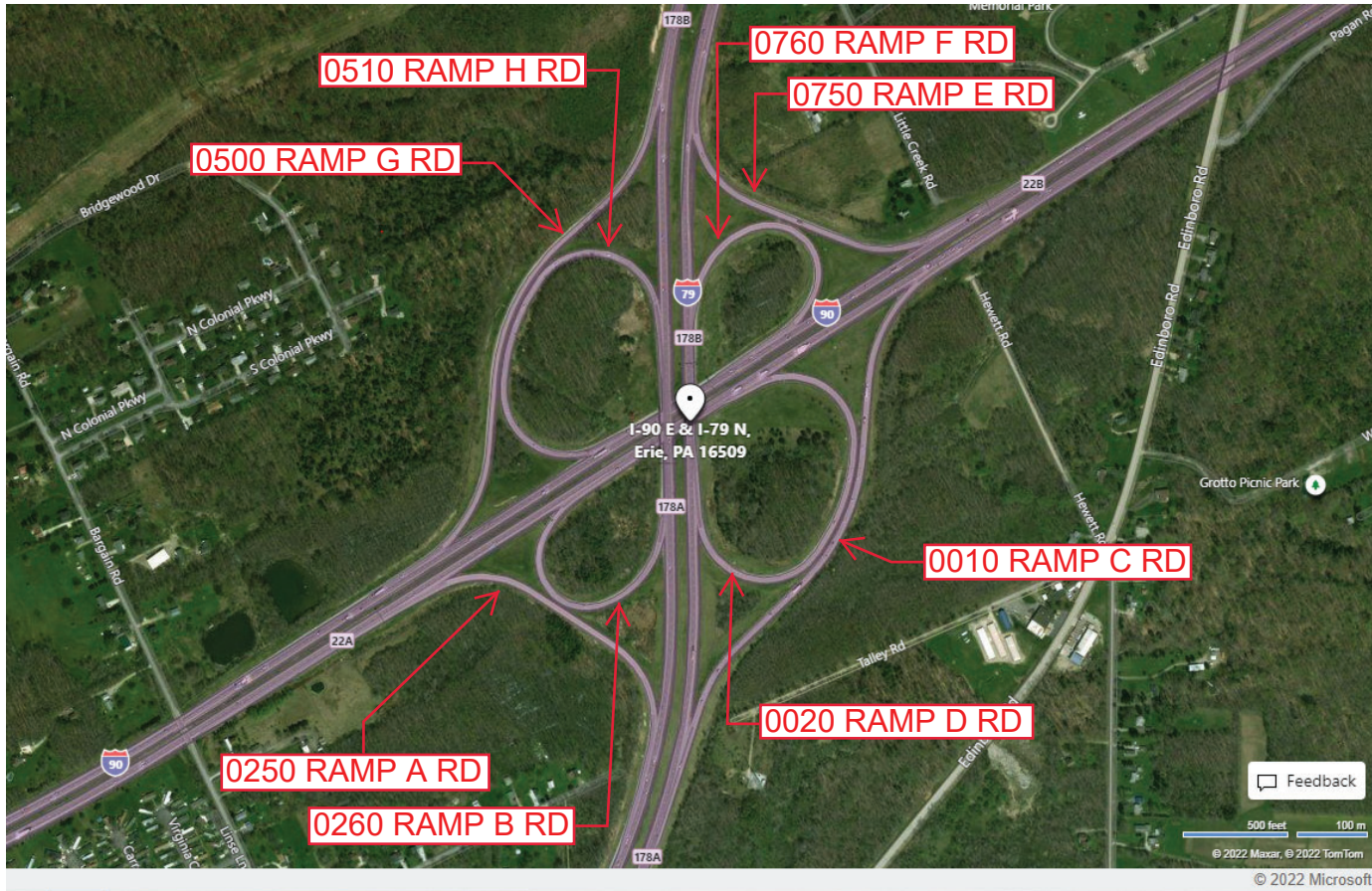
Ramp Segment Number and Ramp Segment Length Information:

Segment	Length	Segment	Length	Segment	Length	Segment	Length
0010	2533	0510	1923				
0020	1911	0750	1328				
0250	1325	0760	1163				
0260	1180						
0500	2463						

Primary Route Interchange Exit Number: 178A, 178B

Secondary Route Interchange Exit Number: 22B

PennDOT Type 10 Map View:



Last Date Modified: May 12, 2022

County: 25

RMS Interchange Information

Print Form

Interchange Number: 8006

Bureau of Maintenance & Operations
Roadway Management Division



Interchange Name: ALBION

Intersecting SR's: I-90 & PA 215 Church St

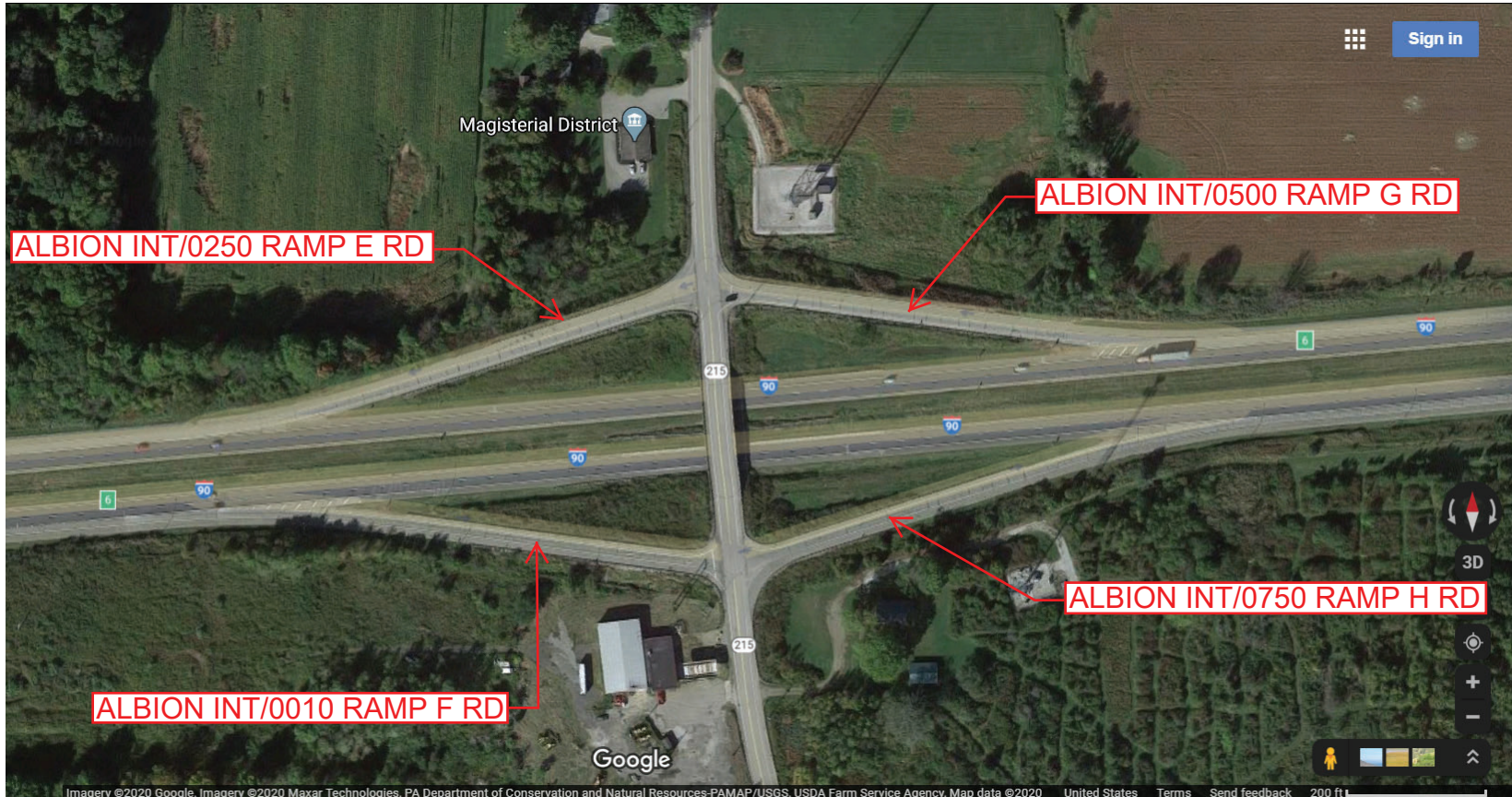
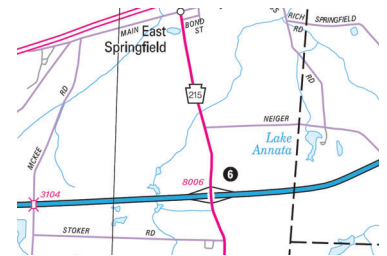
Ramp Segment Number and Ramp Segment Length Information:

Segment	Length	Segment	Length	Segment	Length	Segment	Length
0010	0560						
0250	0570						
0500	0553						
0750	0582						

Primary Route Interchange Exit Number: 6

Secondary Route Interchange Exit Number

PennDOT Type 10 Map View:



Last Date Modified: Sep 24, 2020

County: 25

RMS Interchange Information

Print Form

Bureau of Maintenance & Operations
Asset Management Division



Interchange Number: 8007

Interchange Name: KEARSARGE

Intersecting SR's: I-79 & SR 4012 Interchange Rd

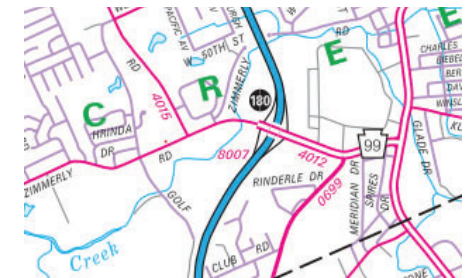
Ramp Segment Number and Ramp Segment Length Information:

Segment	Length	Segment	Length	Segment	Length	Segment	Length
0010	0723						
0250	0639						
0500	0717						
0750	0822						

Primary Route Interchange Exit Number: 180

Secondary Route Interchange Exit Number

PennDOT Type 10 Map View:



Last Date Modified: Mar 11, 2022

County: 25

RMS Interchange Information

Print Form

Interchange Number: 8008

Bureau of Maintenance & Operations
Asset Management Division



Interchange Name: GIRARD & PLATEA INT

Intersecting SR's: I-90 & PA 18 main St

Ramp Segment Number and Ramp Segment Length Information:

Segment	Length	Segment	Length	Segment	Length	Segment	Length
0010	0525						
0250	0500						
0500	0583						
0750	0659						

Primary Route Interchange Exit Number

9

Secondary Route Interchange Exit Number

PennDOT Type 10 Map View:



Feedback

200 ft 50 m

© 2024 TomTom, © OpenStreetMap, © Vexcel Imaging

© 2025 Microsoft

Privacy Choices Consumer Health Privacy

Last Date Modified:

Jan 16, 2025

County: 25

RMS Interchange Information

Print Form

Interchange Number: 8009

Bureau of Maintenance & Operations
Roadway Management Division



Interchange Name: SR20 & SR79

Intersecting SR's: I-79 & PA 20 Twentysixth St

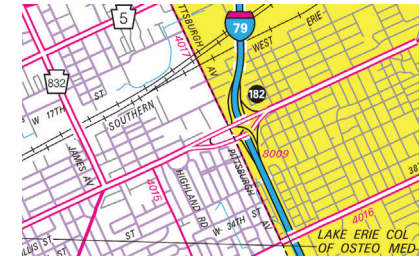
Ramp Segment Number and Ramp Segment Length Information:

Segment	Length	Segment	Length	Segment	Length	Segment	Length
0010	1160	0510	0201				
0020	0922	0750	0820				
0250	0450						
0260	1701						
0500	1505						

Primary Route Interchange Exit Number: 182

Secondary Route Interchange Exit Number

PennDOT Type 10 Map View:



Last Date Modified: Aug 4, 2020

County: 25

RMS Interchange Information

Print Form

Interchange Number: 8010

Bureau of Maintenance & Operations
Roadway Management Division



Interchange Name: FAIRVIEW

Intersecting SR's: I-90 & PA 98

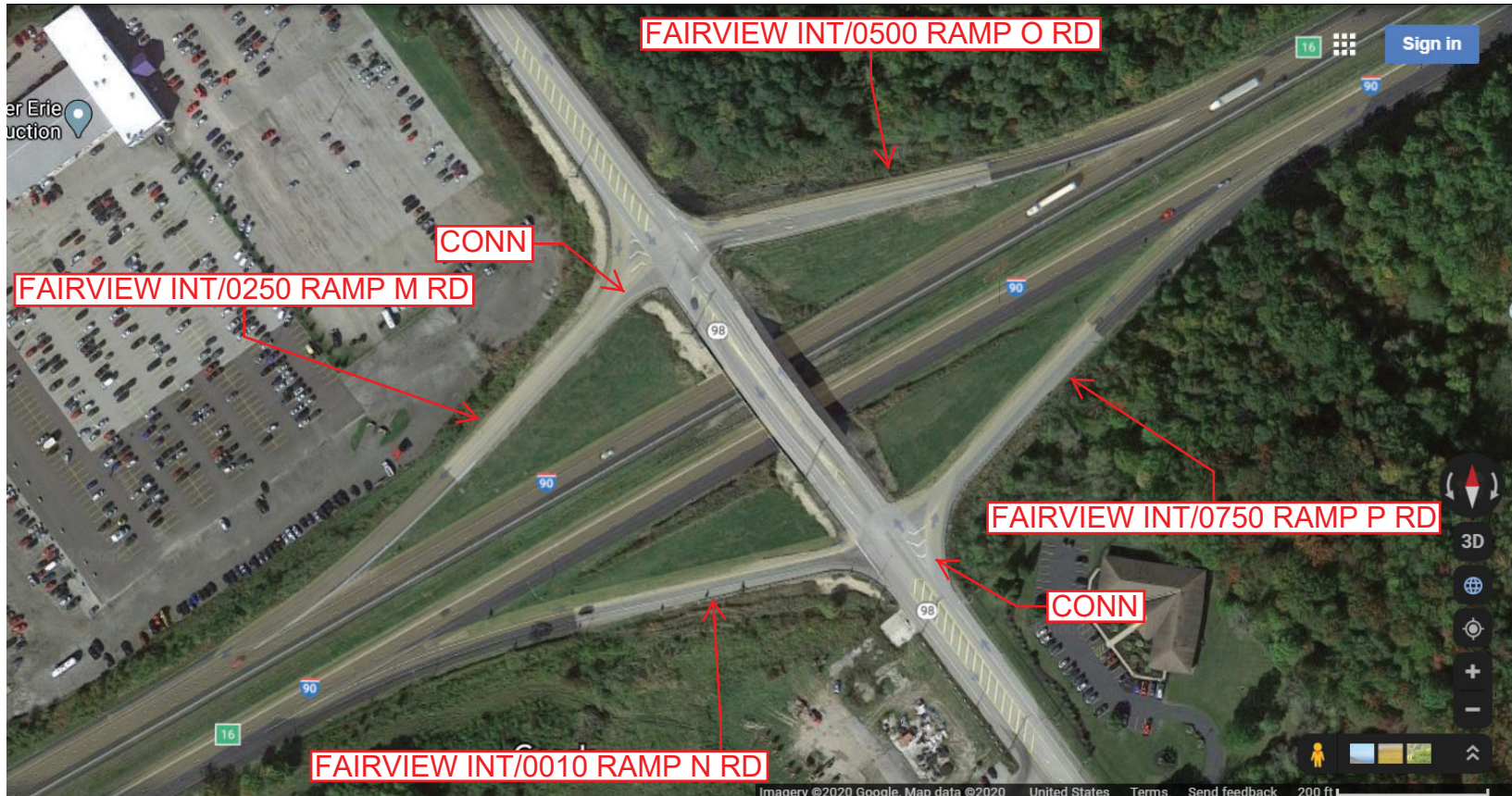
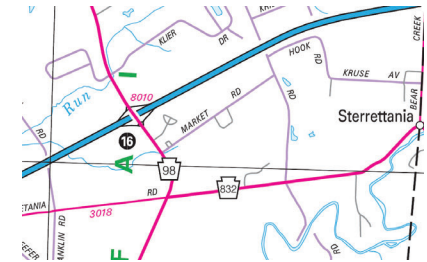
Ramp Segment Number and Ramp Segment Length Information:

Segment	Length	Segment	Length	Segment	Length	Segment	Length
0010	0600						
0250	0603						
0500	0574						
0750	0595						

Primary Route Interchange Exit Number: 16

Secondary Route Interchange Exit Number

PennDOT Type 10 Map View:



Last Date Modified:

Aug 4, 2020

County: 25

RMS Interchange Information

Print Form

Interchange Number: 8011

Bureau of Maintenance & Operations
Roadway Management Division



Interchange Name: SR 5 & I-79

Intersecting SR's: I-79 & PA 5 Twelfth St

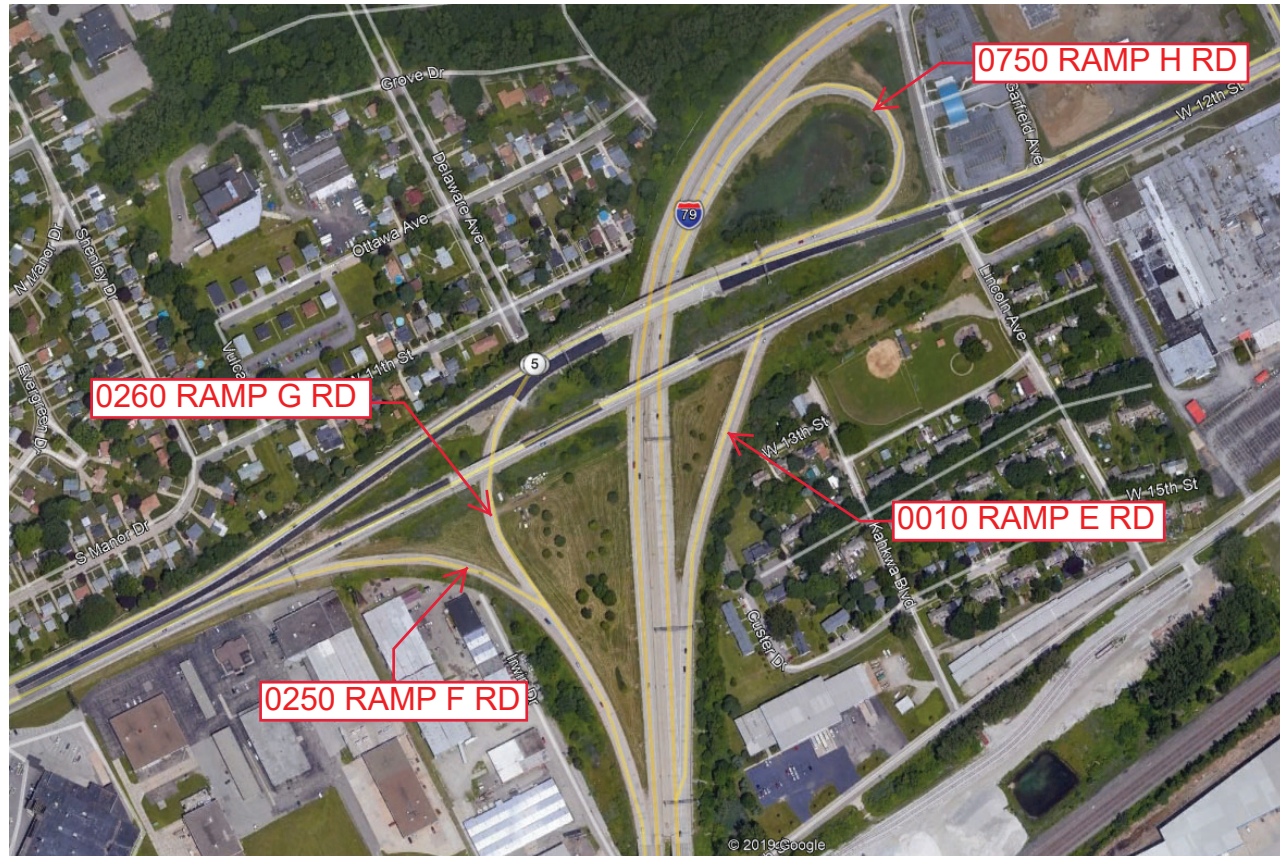
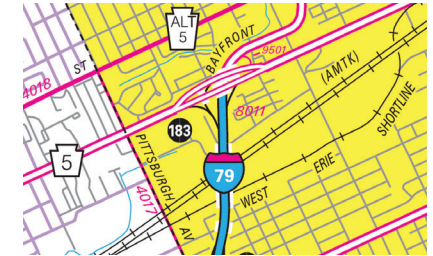
Ramp Segment Number and Ramp Segment Length Information:

Segment	Length	Segment	Length	Segment	Length	Segment	Length
0010	0775						
0250	1195						
0260	0530						
0750	0603						

Primary Route Interchange Exit Number: 183A

Secondary Route Interchange Exit Number: 183B

PennDOT Type 10 Map View:



Last Date Modified: Aug 4, 2020

County: 25

RMS Interchange Information

Print Form

Interchange Number: 8012

Bureau of Maintenance & Operations
Roadway Management Division



Interchange Name: PRESQUE ISLE

Intersecting SR's: I-90 & PA 832 Sterrettania Rd

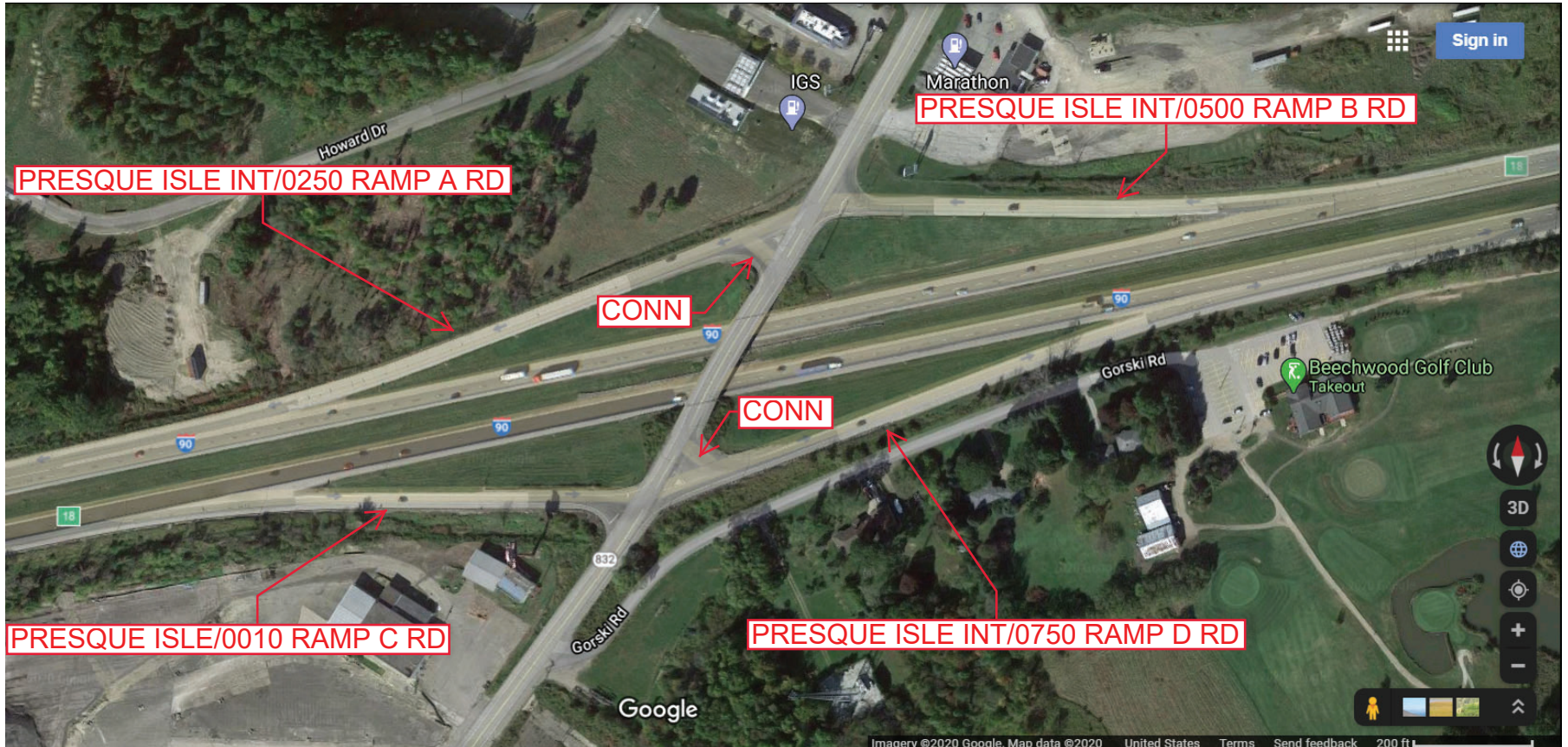
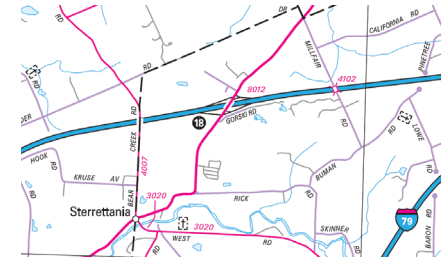
Ramp Segment Number and Ramp Segment Length Information:

Segment	Length	Segment	Length	Segment	Length	Segment	Length
0010	0591						
0250	0874						
0500	0673						
0750	0853						

Primary Route Interchange Exit Number: 18

Secondary Route Interchange Exit Number

PennDOT Type 10 Map View:



Last Date Modified: Sep 25, 2020

County: 25

RMS Interchange Information

Print Form

Bureau of Maintenance & Operations
Roadway Management Division



Interchange Number: 8014

Interchange Name: WATERFORD/PEACH ST

Intersecting SR's: I-90 & US 19 Peach St

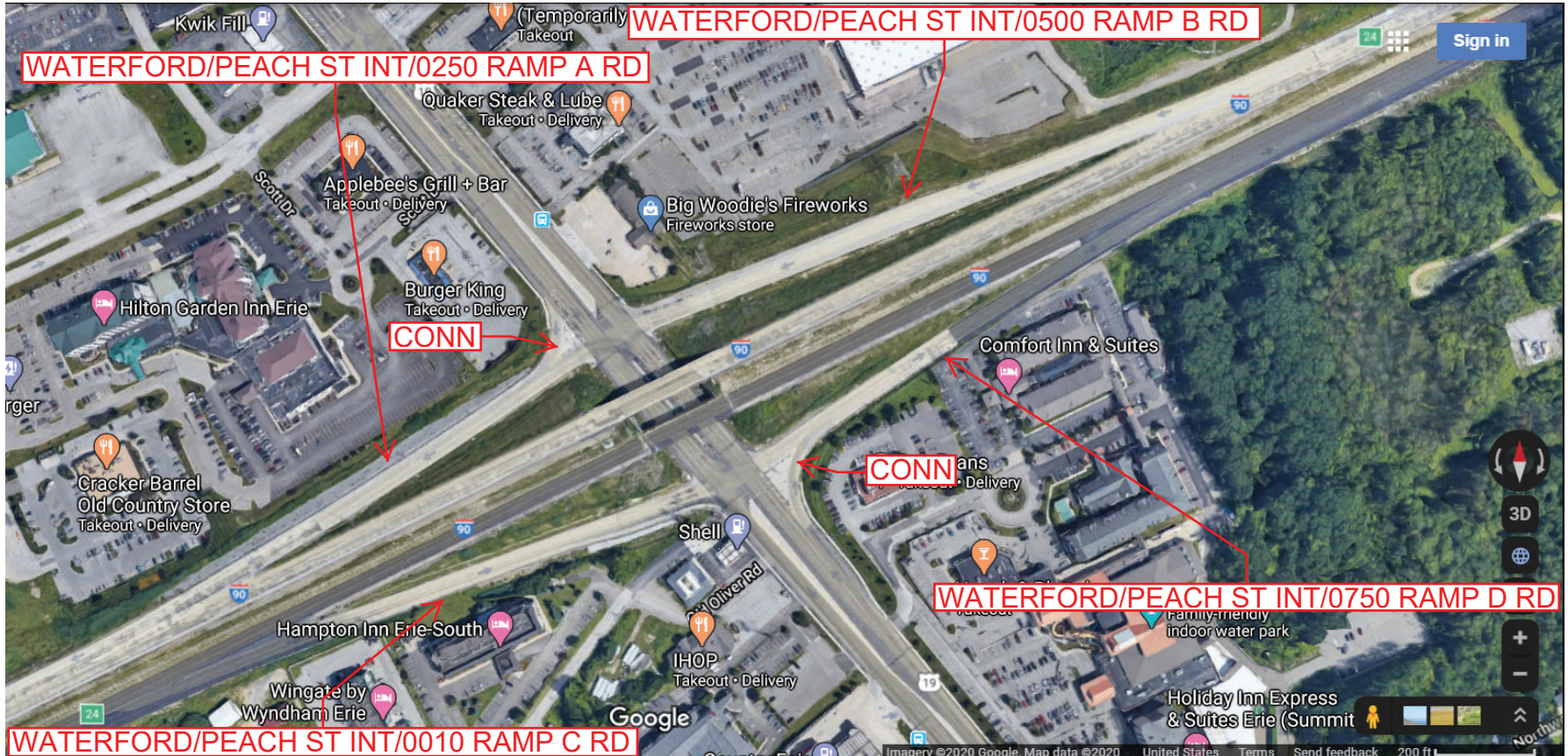
Ramp Segment Number and Ramp Segment Length Information:

Segment	Length	Segment	Length	Segment	Length	Segment	Length
0010	0847						
0250	0803						
0500	1110						
0750	0789						

Primary Route Interchange Exit Number: 24

Secondary Route Interchange Exit Number

PennDOT Type 10 Map View:



Last Date Modified:

Sep 25, 2020

County: 25

RMS Interchange Information

Print Form

Interchange Number: 8016

Bureau of Maintenance & Operations
Roadway Management Division



Interchange Name: WATERFORD/STATE ST

Intersecting SR's: I-90 & PA 197 Perry Hw (Old SR 97)

Ramp Segment Number and Ramp Segment Length Information:

Segment	Length	Segment	Length	Segment	Length	Segment	Length
0010	0834						
0250	0754						
0500	0613						
0750	0888						

Primary Route Interchange Exit Number: 27

Secondary Route Interchange Exit Number

PennDOT Type 10 Map View:



County: 25

RMS Interchange Information

Print Form

Bureau of Maintenance & Operations
Roadway Management Division



Interchange Number: 8018

Interchange Name: HAMMETT/PARADE ST

Intersecting SR's: I-90 & PA 8 Wattsburg Rd

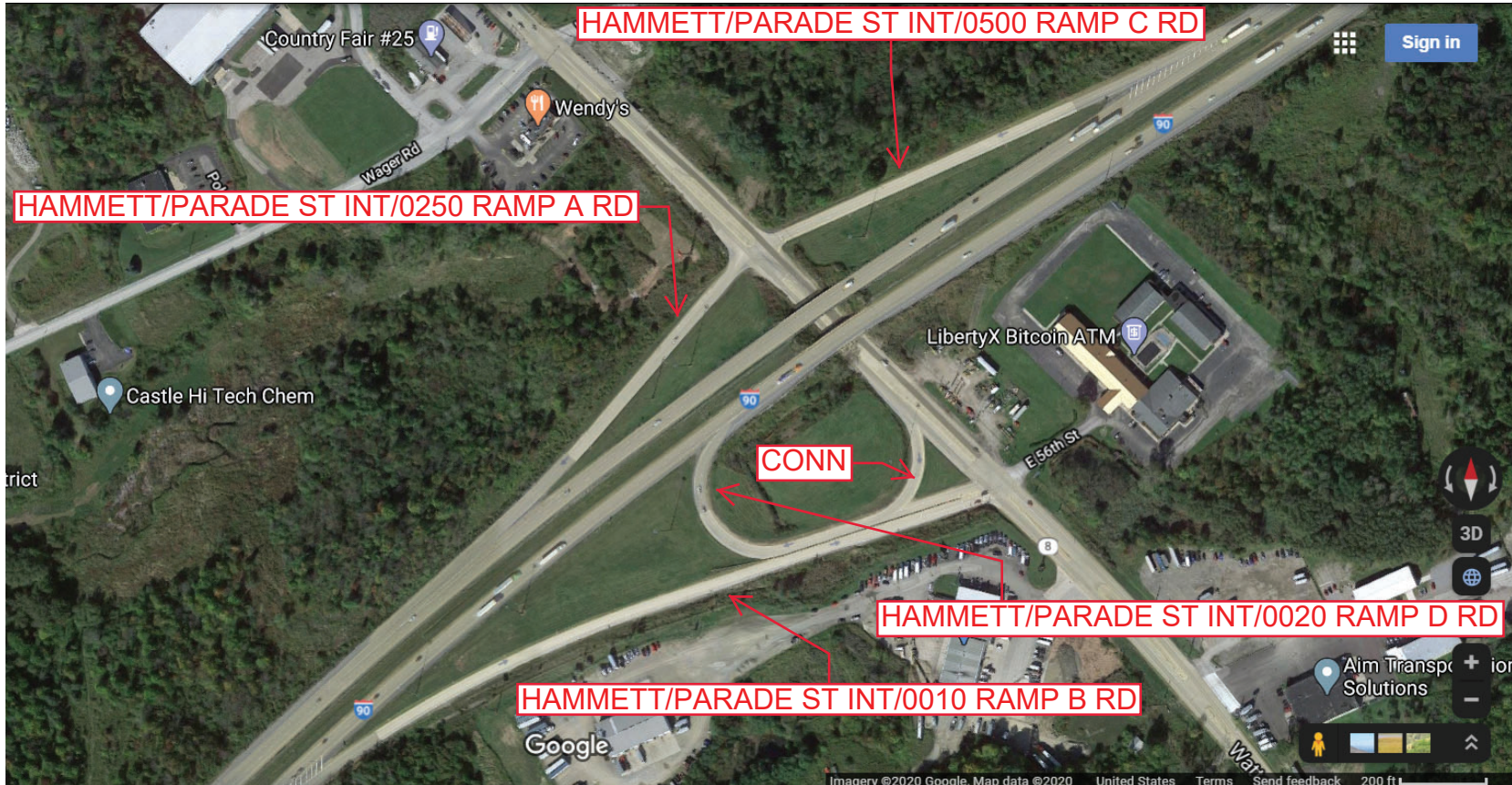
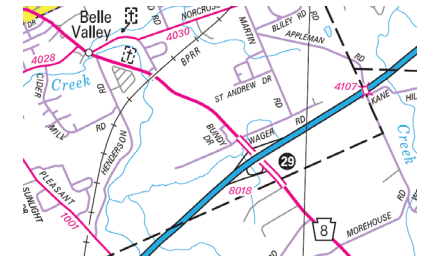
Ramp Segment Number and Ramp Segment Length Information:

Segment	Length	Segment	Length	Segment	Length	Segment	Length
0010	1667						
0020	0854						
0250	0735						
0500	0904						

Primary Route Interchange Exit Number: 29

Secondary Route Interchange Exit Number

PennDOT Type 10 Map View:



Last Date Modified:

Sep 25, 2020

County: 25

RMS Interchange Information

Print Form

Interchange Number: 8020

Bureau of Maintenance & Operations
Roadway Management Division



Interchange Name: WESLEYVILLE/COLT STA

Intersecting SR's: I-90 & PA 290 Station Rd

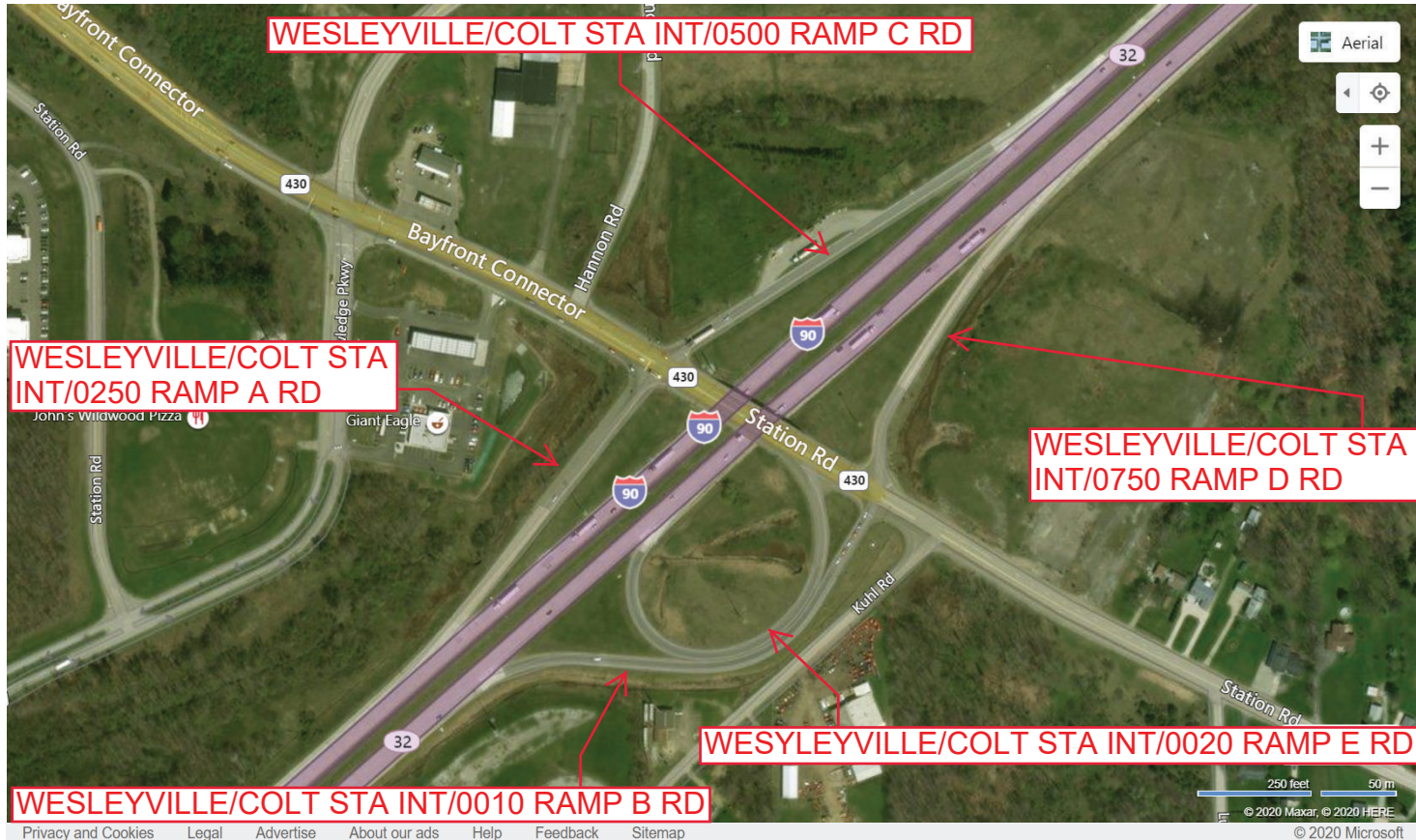
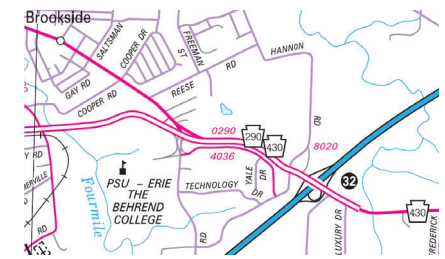
Ramp Segment Number and Ramp Segment Length Information:

Segment	Length	Segment	Length	Segment	Length	Segment	Length
0010	1025						
0020	0879						
0250	0722						
0500	0885						
0750	0663						

Primary Route Interchange Exit Number: 32

Secondary Route Interchange Exit Number

PennDOT Type 10 Map View:



County: 25

RMS Interchange Information

Print Form

Bureau of Maintenance & Operations
Asset Management Division



Interchange Number: 8022

Interchange Name: HARBOR CREEK INT

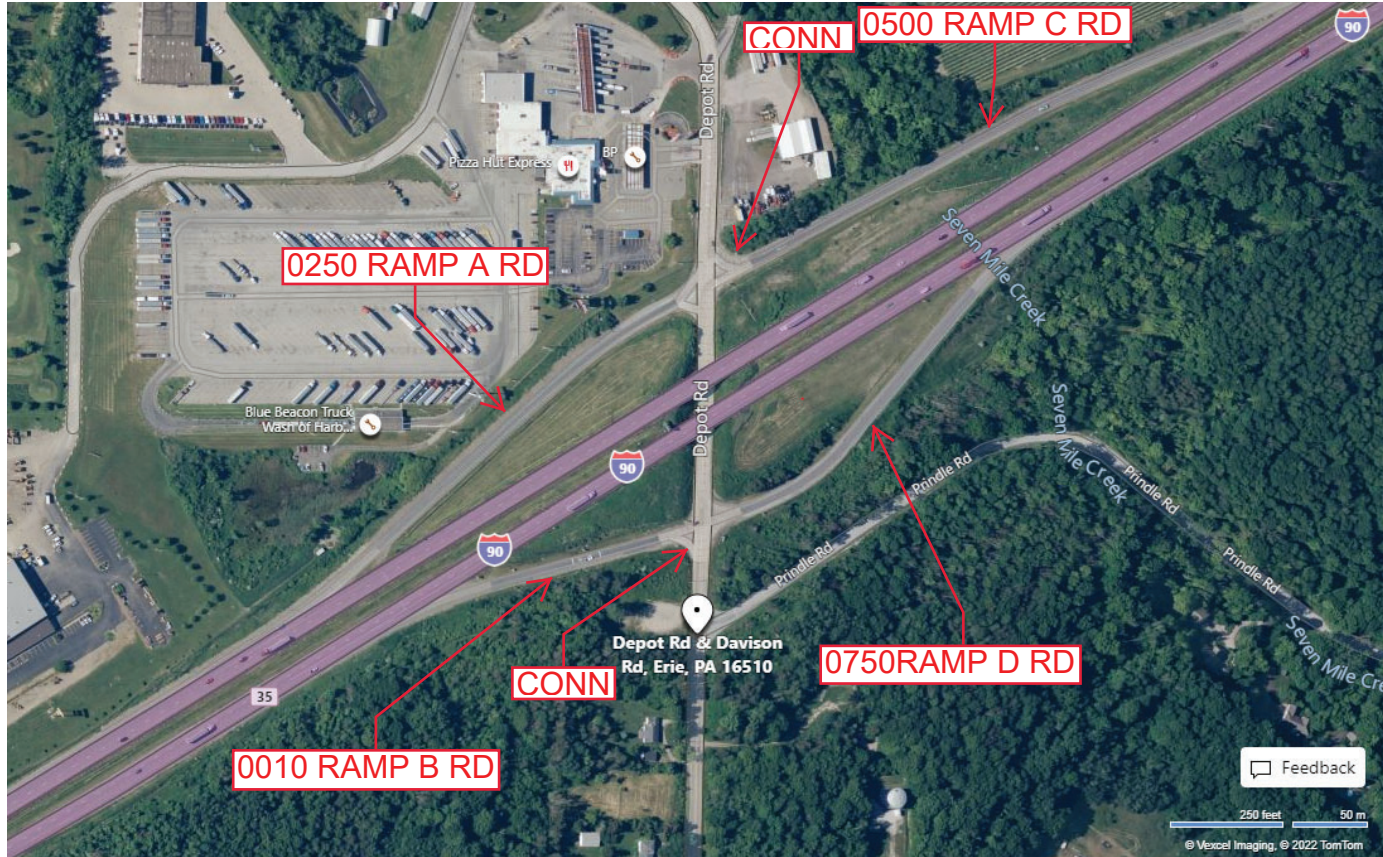
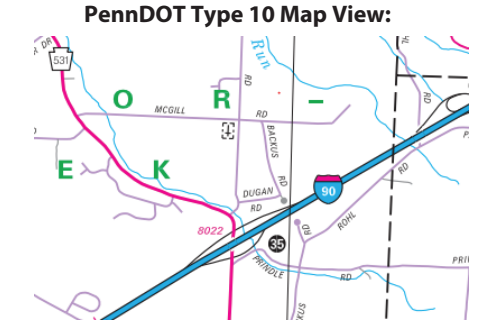
Intersecting SR's: P-90 & PA 531 Depot Rd

Ramp Segment Number and Ramp Segment Length Information:

Segment	Length	Segment	Length	Segment	Length	Segment	Length
0010	0613						
0250	1102						
0500	1491						
0750	0954						

Primary Route Interchange Exit Number: 35

Secondary Route Interchange Exit Number



Feedback
250 feet 50 m
© Vexcel Imaging, © 2022 TomTom
© 2022 Microsoft

Last Date Modified: Mar 25, 2022

County: 25

RMS Interchange Information

Print Form

Interchange Number: 8024

Bureau of Maintenance & Operations
Roadway Management Division



Interchange Name: I-89 & I-90

Intersecting SR's: I-90 & PA 89 Station Rd

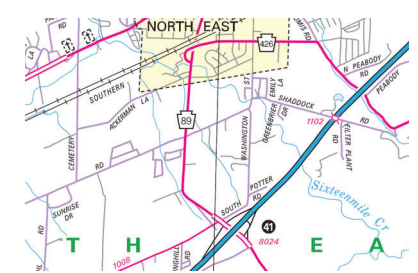
Ramp Segment Number and Ramp Segment Length Information:

Segment	Length	Segment	Length	Segment	Length	Segment	Length
0250	1876						
0500	1023						
0750	1190						
0760	0794						

Primary Route Interchange Exit Number: 41

Secondary Route Interchange Exit Number

PennDOT Type 10 Map View:



County: 25

RMS Interchange Information

Print Form

Interchange Number: 8026

Bureau of Maintenance & Operations
Roadway Management Division



Interchange Name: SR 20 & I-90

Intersecting SR's: I-90 & PA 20 Main St

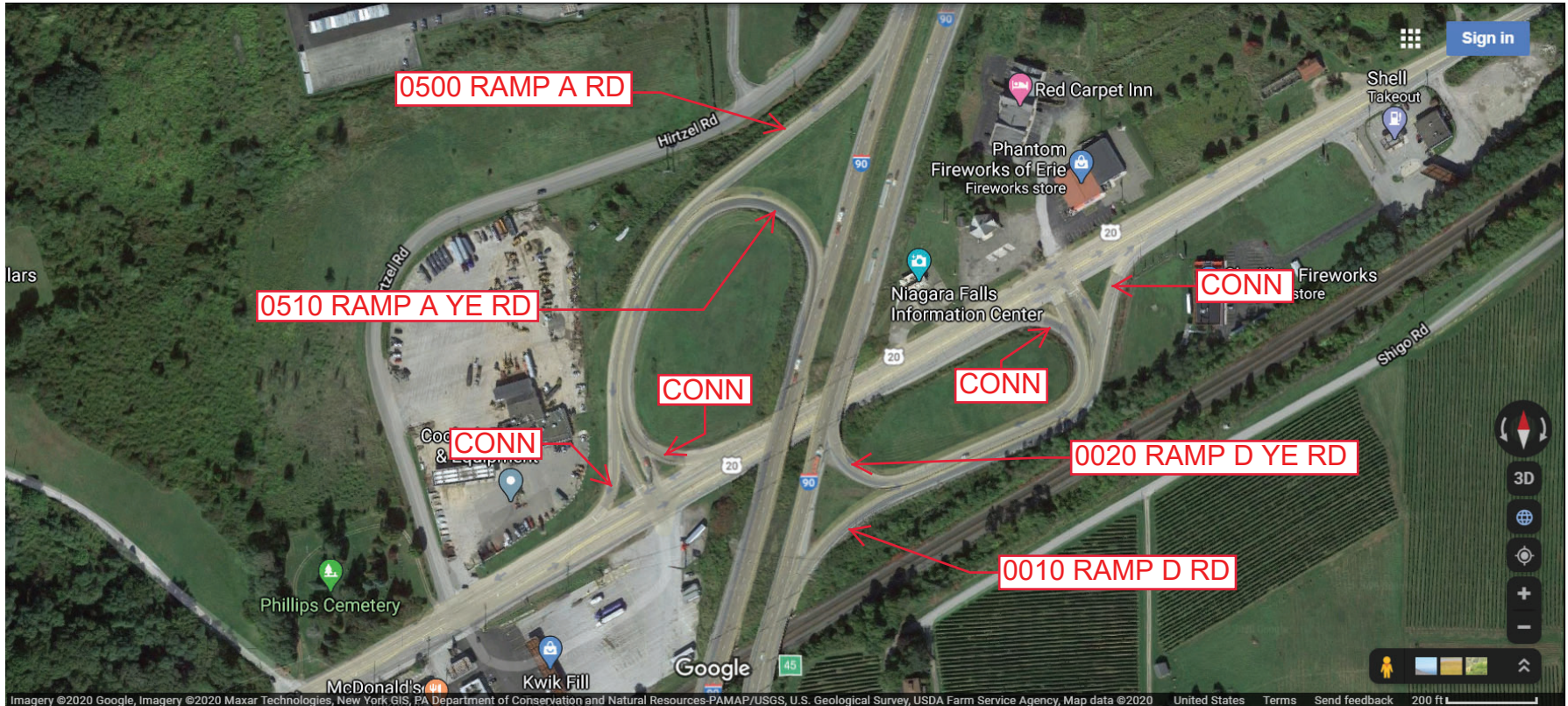
Ramp Segment Number and Ramp Segment Length Information:

Segment	Length	Segment	Length	Segment	Length	Segment	Length
0010	0992						
0020	0854						
0500	1212						
0510	0992						

Primary Route Interchange Exit Number: 45

Secondary Route Interchange Exit Number

PennDOT Type 10 Map View:



Last Date Modified:

Aug 4, 2020

County: 25

RMS Interchange Information

Print Form

Interchange Number: 8170

Bureau of Maintenance & Operations
Roadway Management Division



Interchange Name: I-90 & SR 17

Intersecting SR's: I-86 & I-90

Ramp Segment Number and Ramp Segment Length Information:

Segment	Length	Segment	Length	Segment	Length	Segment	Length
0010	1535						
0020	4760						
0250	1372						
0500	3825						

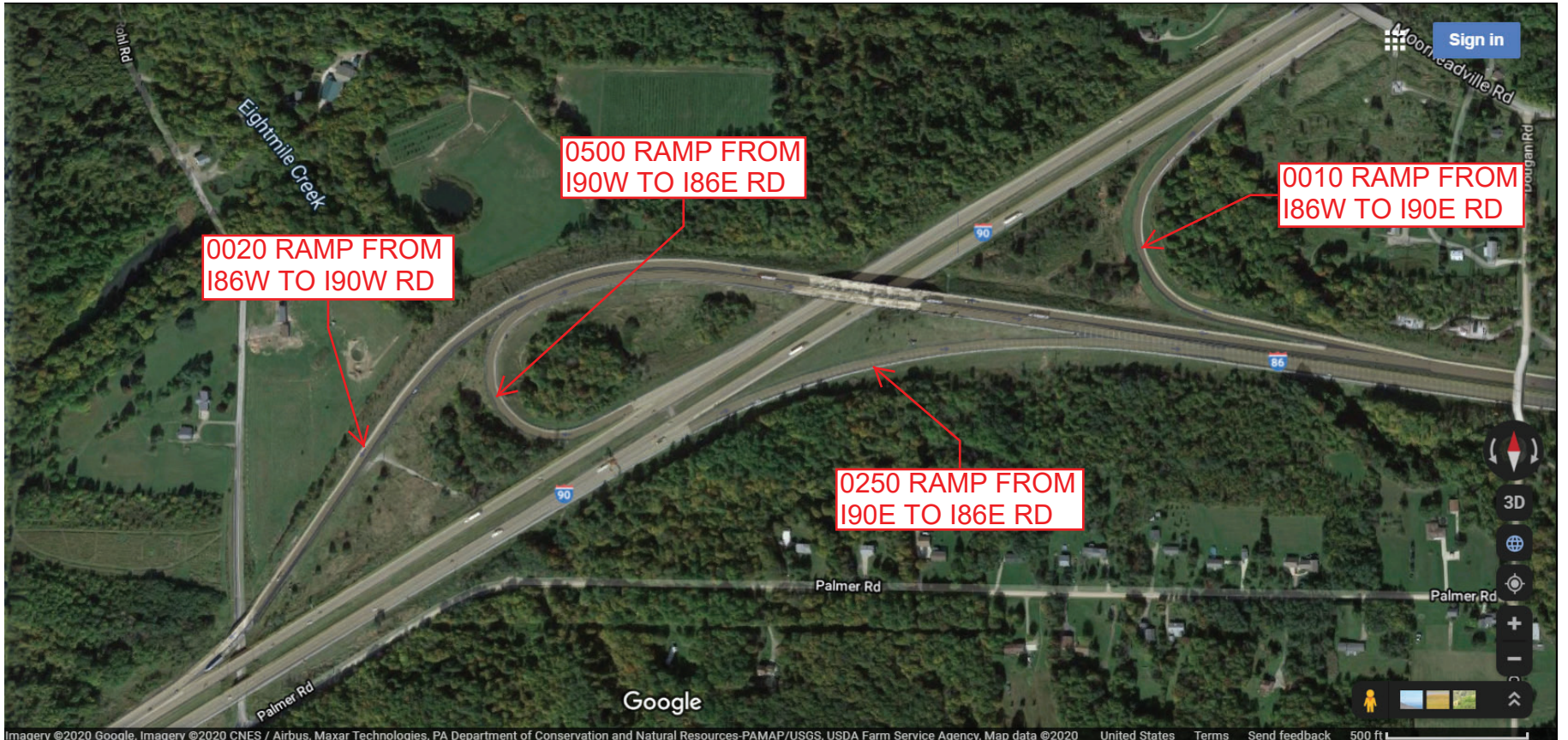
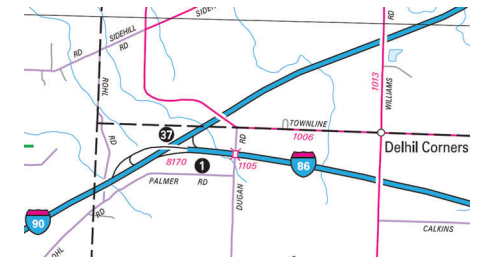
Primary Route
Interchange Exit
Number

1

Secondary Route
Interchange Exit
Number

37

PennDOT Type 10 Map View:



Imagery ©2020 Google, Imagery ©2020 CNES / Airbus, Maxar Technologies, PA Department of Conservation and Natural Resources-PAMAP/USGS, USDA Farm Service Agency, Map data ©2020 United States Terms Send feedback 500 ft

Last Date Modified:

Aug 4, 2020

County: 25

RMS Interchange Information

Print Form

Bureau of Maintenance & Operations
Roadway Management Division



Interchange Number: 8172

Interchange Name: I-90 & SR 17

Intersecting SR's: I-86 & PA 89 Beaver Dam Rd

Ramp Segment Number and Ramp Segment Length Information:

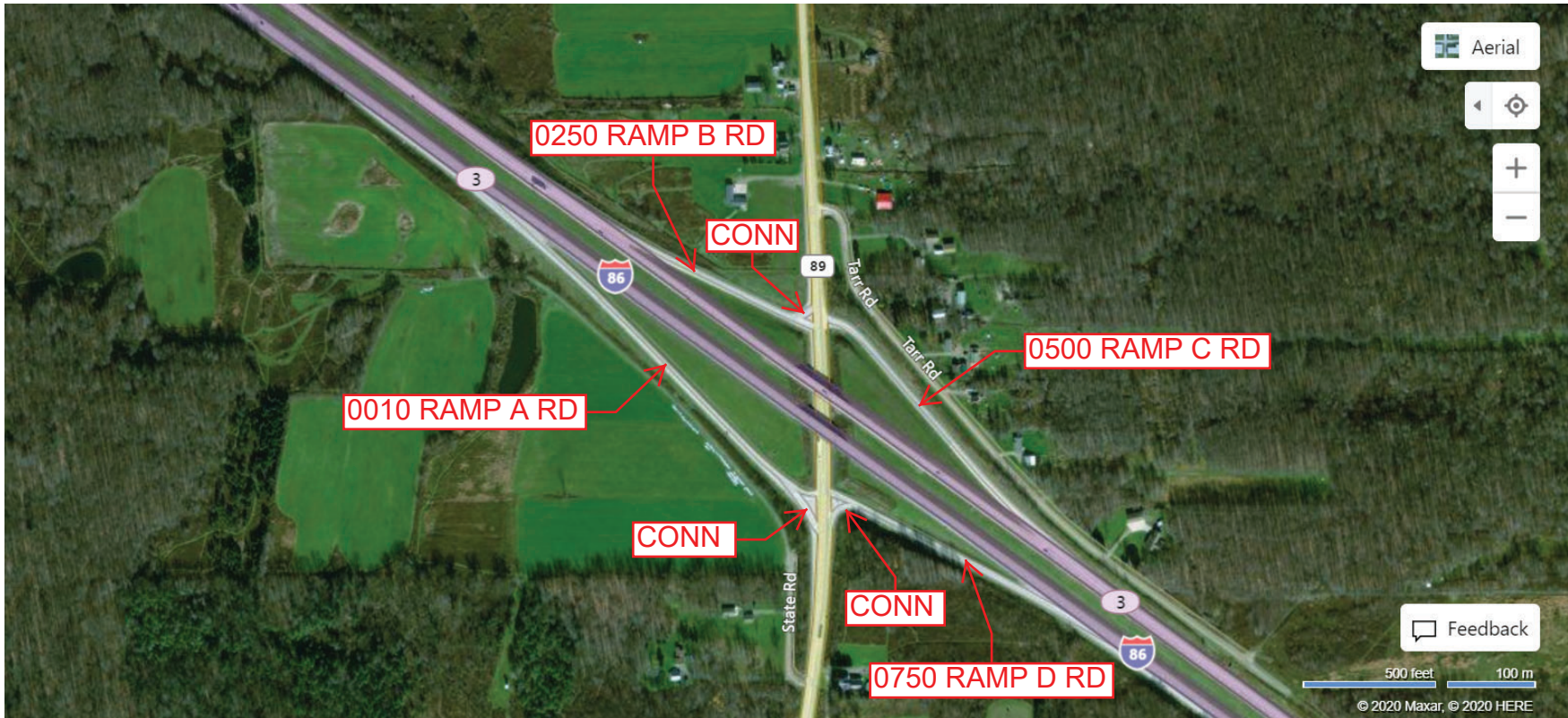
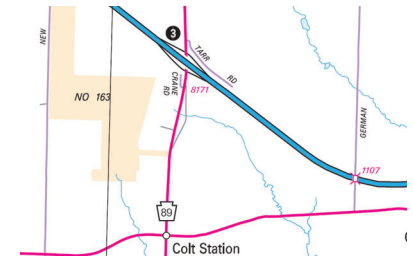
Segment	Length	Segment	Length	Segment	Length	Segment	Length
0010	1467						
0250	0779						
0500	1178						
0750	0838						

Primary Route Interchange Exit Number

3

Secondary Route Interchange Exit Number

PennDOT Type 10 Map View:



Last Date Modified:

Aug 4, 2020

County: 25

RMS Interchange Information

Print Form

Interchange Number: 9101

Bureau of Maintenance & Operations
Roadway Management Division



Interchange Name: RIDGE RD/SR 3006

Intersecting SR's: PA 20 Ridge Rd & SR 3006

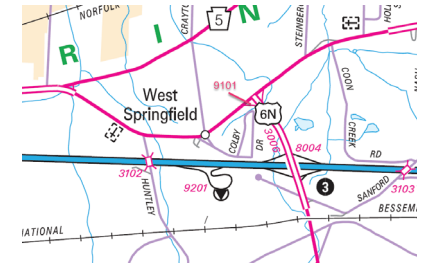
Ramp Segment Number and Ramp Segment Length Information:

Segment	Length	Segment	Length	Segment	Length	Segment	Length
0020	0221						

Primary Route
Interchange Exit
Number

Secondary Route
Interchange Exit
Number

PennDOT Type 10 Map View:



Last Date Modified:

Aug 4, 2020

County: 25

RMS Interchange Information

Print Form

Bureau of Maintenance & Operations
Asset Management Division



Interchange Number: 9102

Interchange Name: BAYFRONT CONNECTOR

Intersecting SR's: PA 290 & CITY Buffalo Rd, Pennsylvania Av

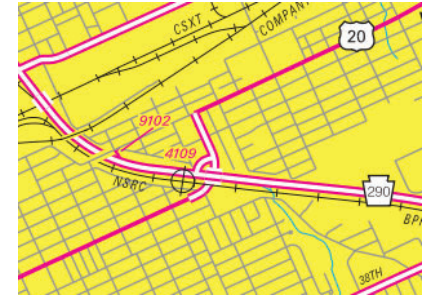
Ramp Segment Number and Ramp Segment Length Information:

Segment	Length	Segment	Length	Segment	Length	Segment	Length
0010	0295						
0020	0284						

Primary Route Interchange Exit Number

Secondary Route Interchange Exit Number

PennDOT Type 10 Map View:



County: 25

RMS Interchange Information

Print Form

Interchange Number: 9104

Bureau of Maintenance & Operations
Asset Management Division



Interchange Name: CONNECTOR TO SR 0005

Intersecting SR's: US 20 Ridge Rd & PA 5 W Lake Rd

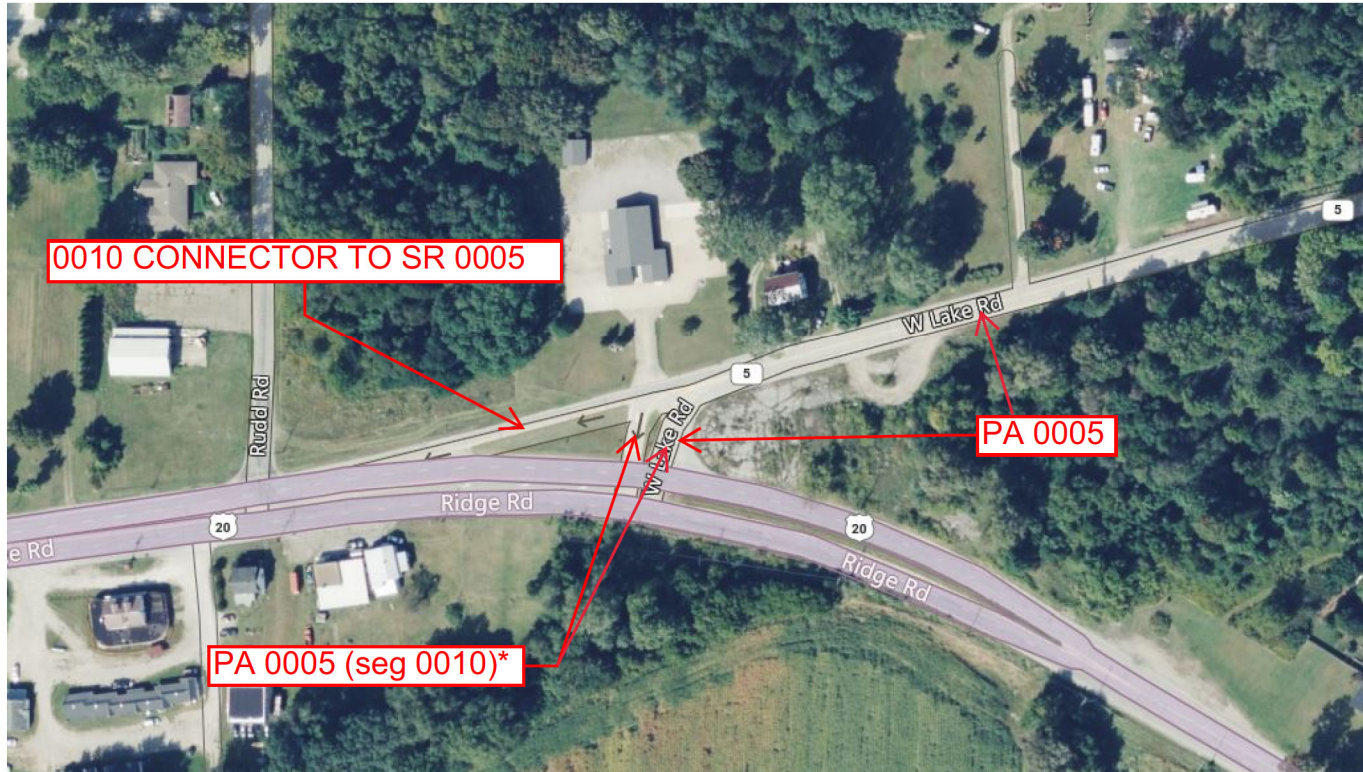
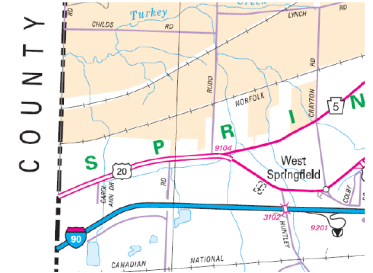
Ramp Segment Number and Ramp Segment Length Information:

Segment	Length	Segment	Length	Segment	Length	Segment	Length
0010	0181						

Primary Route
Interchange Exit
Number

Secondary Route
Interchange Exit
Number

PennDOT Type 10 Map View:



* At this moment, both of these lanes are SR 0005 segment 0010. Bidirectional.

Last Date Modified:

Apr 16, 2024

County: 25

RMS Interchange Information

Print Form

Bureau of Maintenance & Operations
Asset Management Division



Interchange Number: 9105

Interchange Name: BAYFRONT CONNECTOR INT

Intersecting SR's: PA 290 Bayfront Connector & PA 430 Station Rd

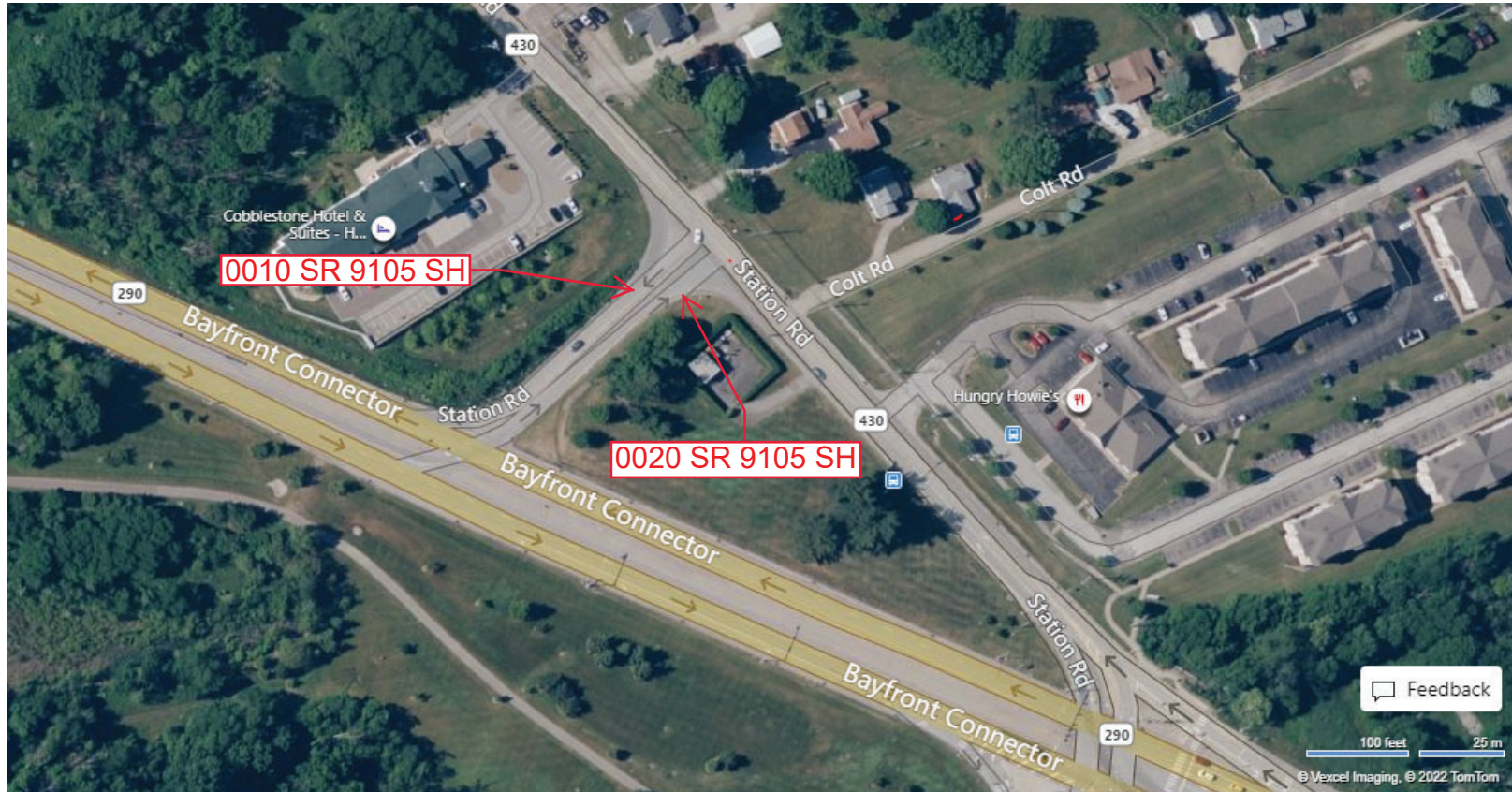
Ramp Segment Number and Ramp Segment Length Information:

Segment	Length	Segment	Length	Segment	Length	Segment	Length
0010	0282						
0020	0302						

Primary Route Interchange Exit Number

Secondary Route Interchange Exit Number

PennDOT Type 10 Map View:



Feedback

100 feet 25 m

© Vexcel Imaging, © 2022 TomTom

© 2022 Microsoft

Last Date Modified:

May 13, 2022

County: 25

RMS Interchange Information

Bureau of Maintenance & Operations
Asset Management Division

Print Form



Interchange Number: 9107

Interchange Name: WYE ROAD

Intersecting SR's: US 19 Peach St & PA 699 Interchange Rd

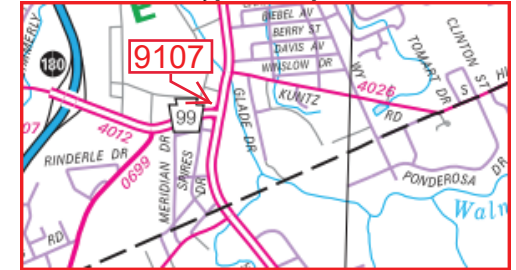
Ramp Segment Number and Ramp Segment Length Information:

Segment	Length	Segment	Length	Segment	Length	Segment	Length
0010	0207						

Primary Route Interchange Exit Number

Secondary Route Interchange Exit Number

PennDOT Type 10 Map View:



Last Date Modified: Jan 16, 2025

County: 25

RMS Interchange Information

Print Form

Bureau of Maintenance & Operations
Asset Management Division



Interchange Number: 9201

Interchange Name: SPRINGFIELD TWP WELCOME CTR

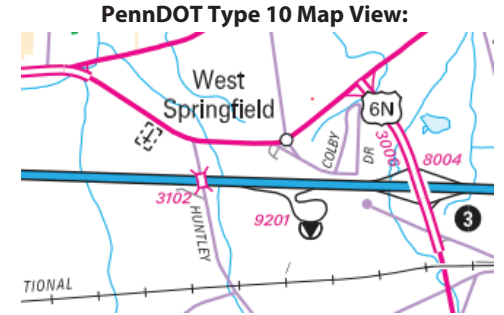
Intersecting SR's: I-90 Amvet Mem Hw (EB)

Ramp Segment Number and Ramp Segment Length Information:

Segment	Length	Segment	Length	Segment	Length	Segment	Length
0010	2580						
0020	1161						

Primary Route Interchange Exit Number

Secondary Route Interchange Exit Number



Feedback

100 feet 25 m

© 2022 Maxar, © 2022 TomTom

© 2022 Microsoft

Last Date Modified:

May 17, 2022

County: 25

RMS Interchange Information

Print Form

Bureau of Maintenance & Operations
Asset Management Division



Interchange Number: 9202

Interchange Name: NORTH EAST WELCOMR CTR

Intersecting SR's: I-90 Amvet Memorial Hw (WB)

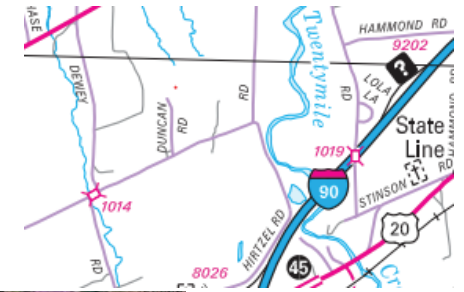
Ramp Segment Number and Ramp Segment Length Information:

Segment	Length	Segment	Length	Segment	Length	Segment	Length
0010	1407						
0020	1069						

Primary Route Interchange Exit Number

Secondary Route Interchange Exit Number

PennDOT Type 10 Map View:



Feedback

100 feet 25 m
© Vexcel Imaging, © 2022 TomTom
© 2022 Microsoft

Last Date Modified: May 17, 2022

County: 25

RMS Interchange Information

Bureau of Maintenance & Operations
Asset Management Division

Print Form



Interchange Number: 9501

Interchange Name: BAYFRONT PARKWAY HUB PARK & RIDE

Intersecting SR's: (CITY) Lincoln Ave & Bayfront Parkway

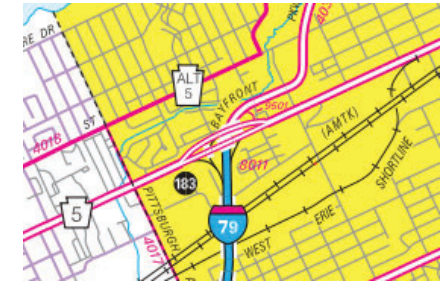
Ramp Segment Number and Ramp Segment Length Information:

Segment	Length	Segment	Length	Segment	Length	Segment	Length
0010	0225						
0020	0215						

Primary Route Interchange Exit Number

Secondary Route Interchange Exit Number

PennDOT Type 10 Map View:



Feedback

100 feet 25 m

© 2022 Maxar, © 2022 TomTom

© 2022 Microsoft

Last Date Modified:

May 17, 2022