

County: 43

RMS Interchange Information

Bureau of Maintenance & Operations
Asset Management Division

Print Form



Interchange Number: 8001

Interchange Name: GROVE CITY INT

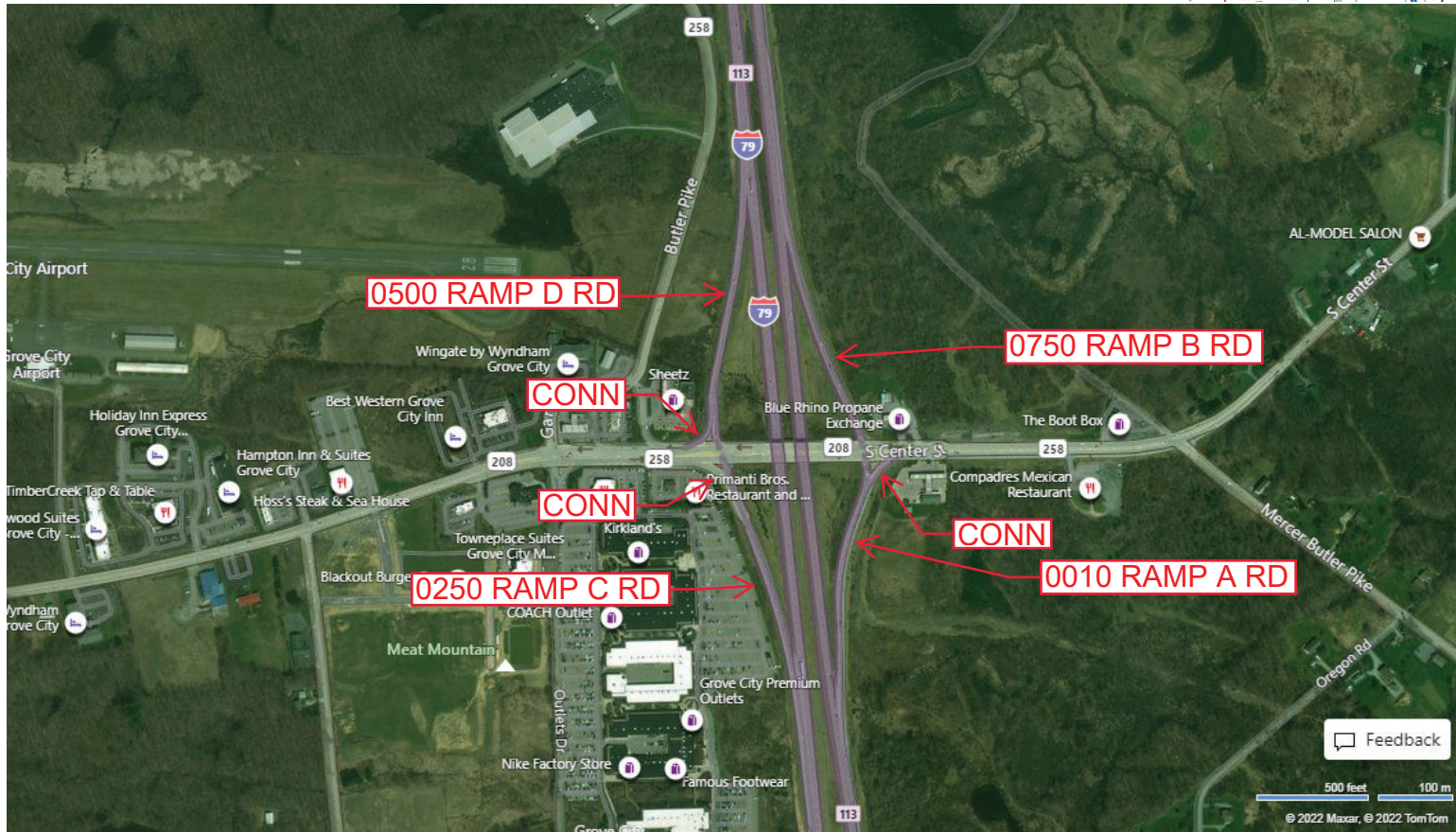
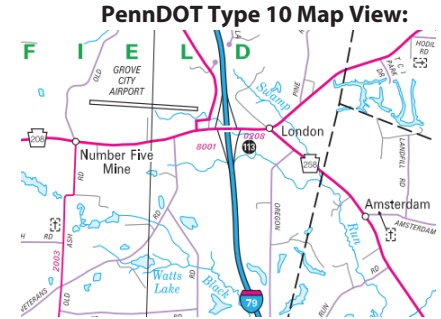
Intersecting SR's: I-79 & PA 208

Ramp Segment Number and Ramp Segment Length Information:

Segment	Length	Segment	Length	Segment	Length	Segment	Length
0010	1045						
0250	0935						
0500	1139						
0750	0994						

Primary Route Interchange Exit Number: 113

Secondary Route Interchange Exit Number



Feedback

500 feet 100 m

© 2022 Maxar, © 2022 TomTom

© 2022 Microsoft

Last Date Modified:

May 18, 2022

County: 43

RMS Interchange Information

Bureau of Maintenance & Operations
Asset Management Division

Print Form



Interchange Number: 8003

Interchange Name: MERCER/FRANKLIN INT

Intersecting SR's: I-79 & PA 62 Franklin Rd

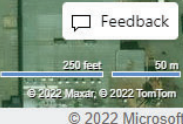
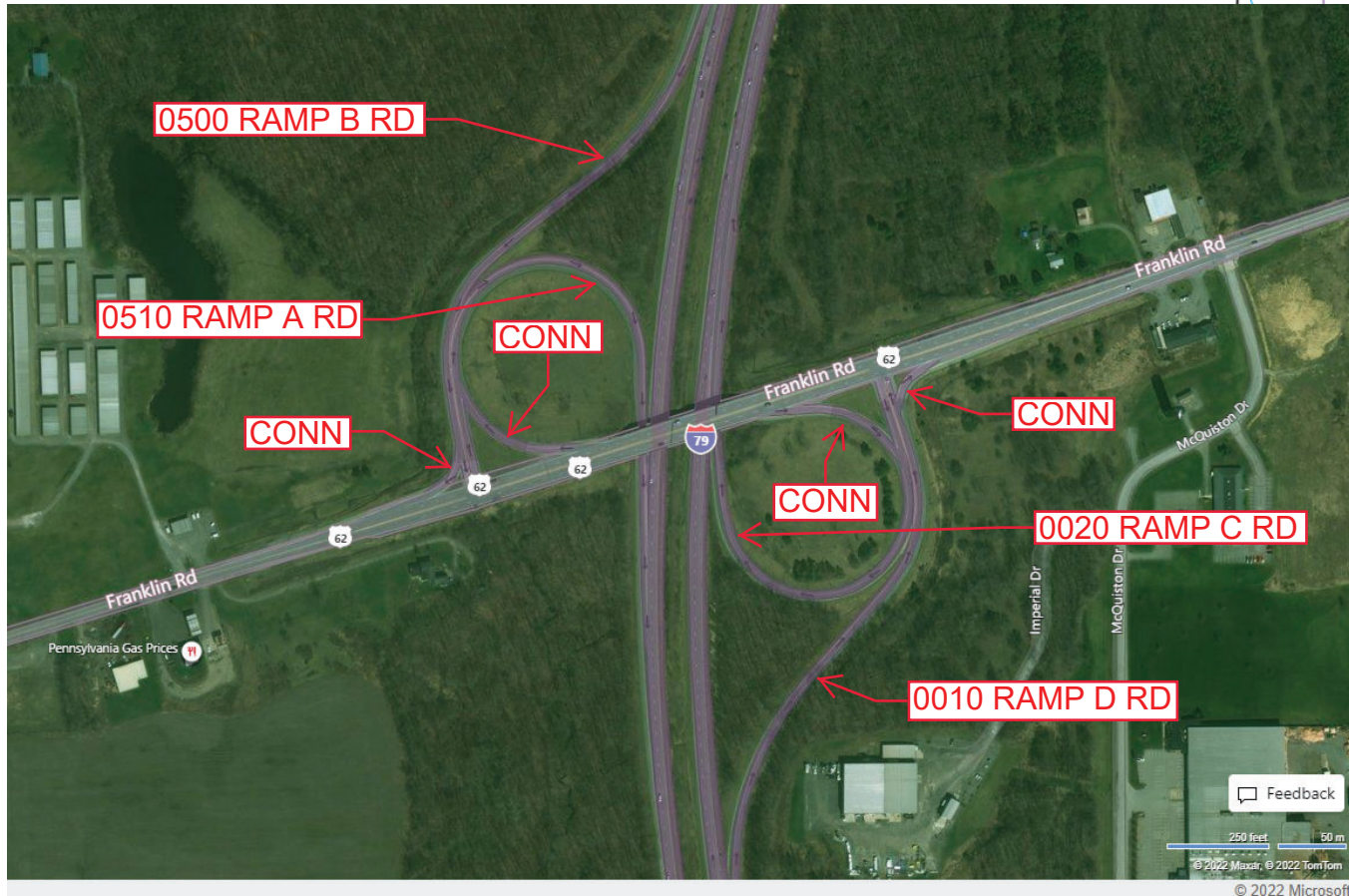
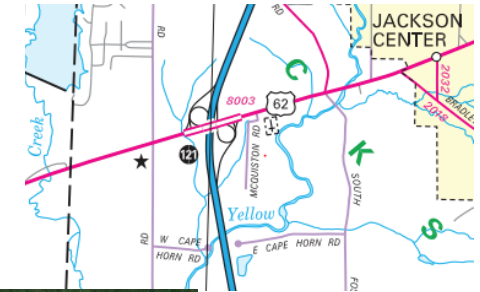
Ramp Segment Number and Ramp Segment Length Information:

Segment	Length	Segment	Length	Segment	Length	Segment	Length
0010	1423						
0020	1247						
0500	1509						
0510	1266						

Primary Route Interchange Exit Number: 121

Secondary Route Interchange Exit Number

PennDOT Type 10 Map View:



Last Date Modified:

May 18, 2022

County: 43

RMS Interchange Information

Print Form

Bureau of Maintenance & Operations
Asset Management Division



Interchange Number: 8004

Interchange Name: I-80 & PA 760 INT

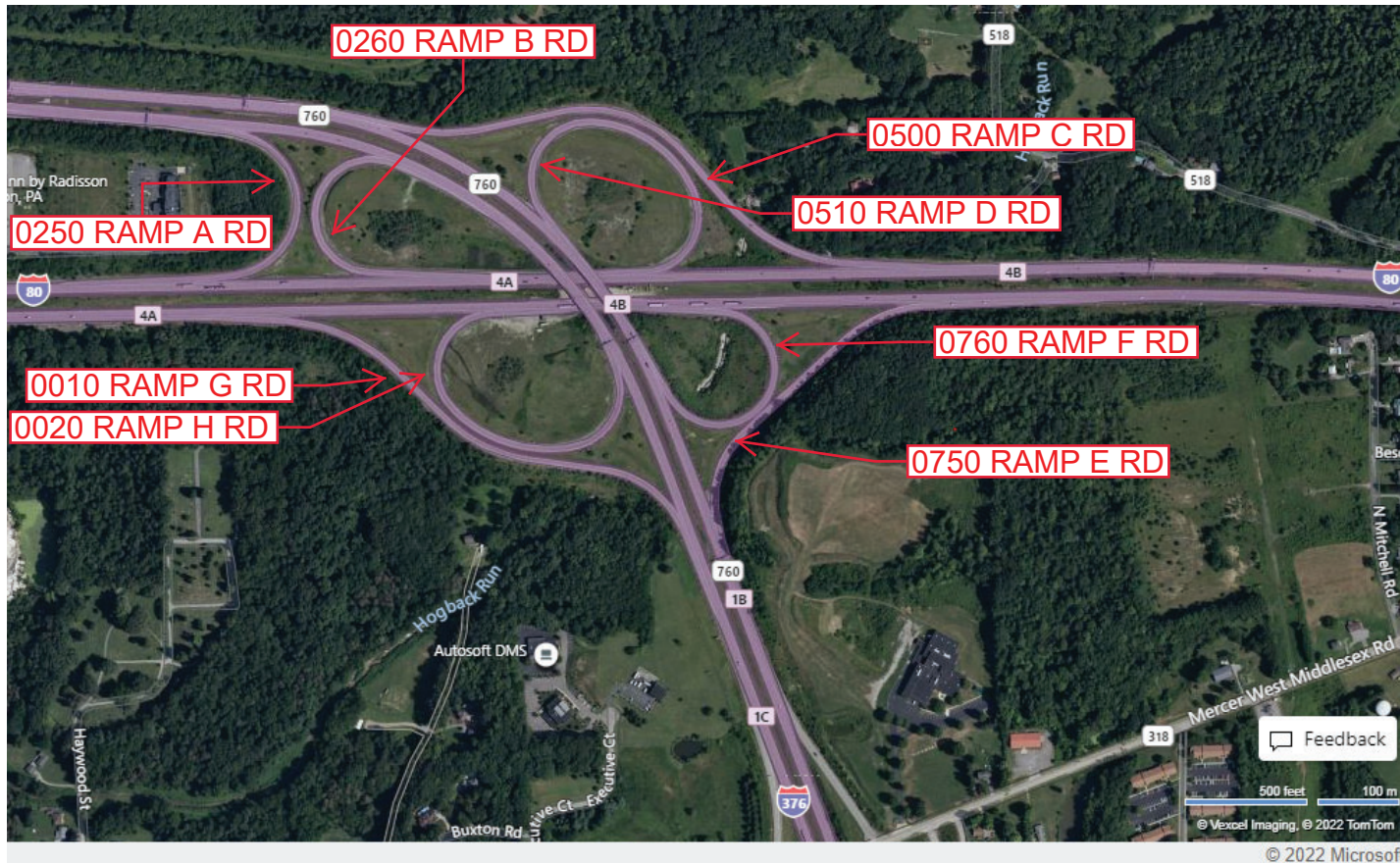
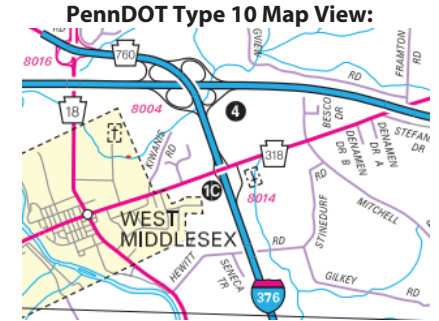
Intersecting SR's: I-80 & I-376 & PA 760

Ramp Segment Number and Ramp Segment Length Information:

Segment	Length	Segment	Length	Segment	Length	Segment	Length
0010	1921	0510	1522				
0020	1461	0750	1203				
0250	0838	0760	0998				
0260	0786						
0500	2211						

Primary Route Interchange Exit Number: 4A

Secondary Route Interchange Exit Number



Last Date Modified:

May 20, 2022

County: 43

RMS Interchange Information

Print Form

Bureau of Maintenance & Operations
Asset Management Division



Interchange Number: 8005

Interchange Name: GREENVILLE/SANDY LAKE INT

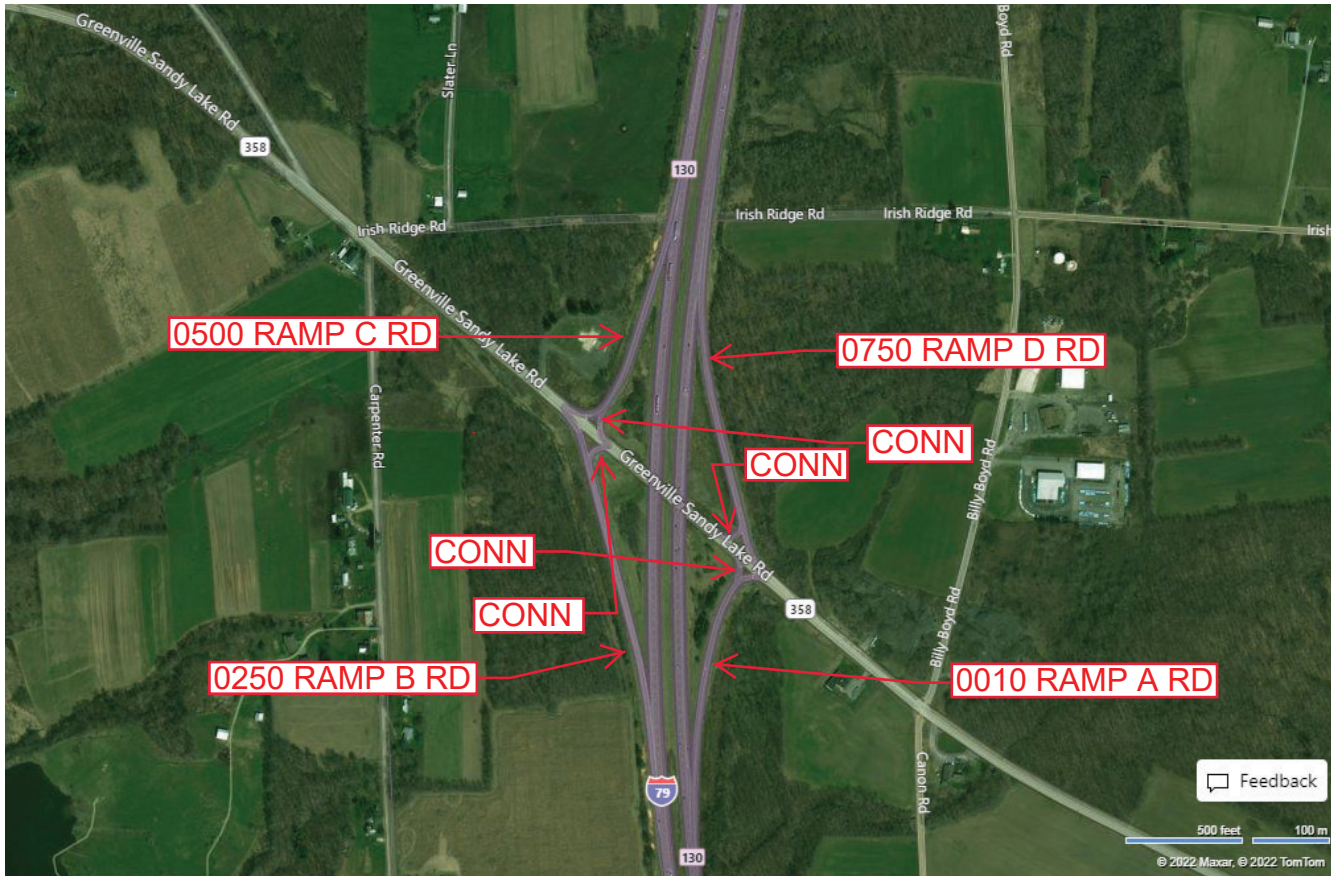
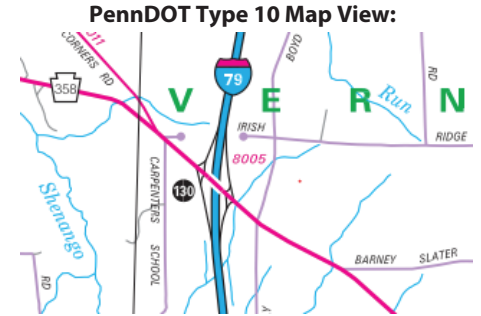
Intersecting SR's: I-79 & PA 358 Hadley Rd

Ramp Segment Number and Ramp Segment Length Information:

Segment	Length	Segment	Length	Segment	Length	Segment	Length
0010	0926						
0250	1290						
0500	0854						
0750	1157						

Primary Route Interchange Exit Number: 130

Secondary Route Interchange Exit Number



Feedback
500 feet 100 m
© 2022 Maxar, © 2022 TomTom

Last Date Modified:

May 23, 2022

© 2022 Microsoft

County: 43

RMS Interchange Information

Print Form

Interchange Number: 8006

Bureau of Maintenance & Operations
Roadway Management Division



Interchange Name: MERCER

Intersecting SR's: I-80 & US 19 Perry Hw

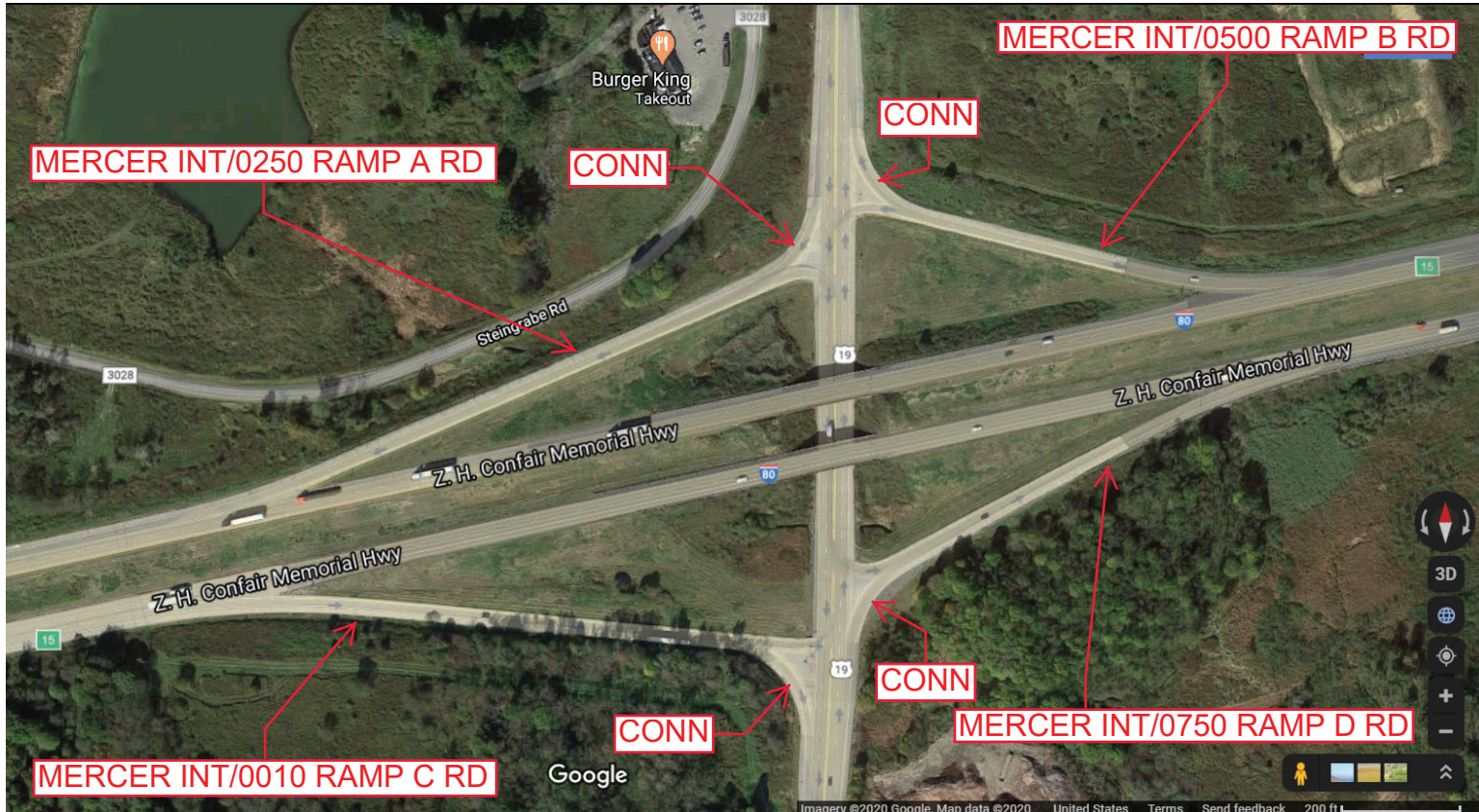
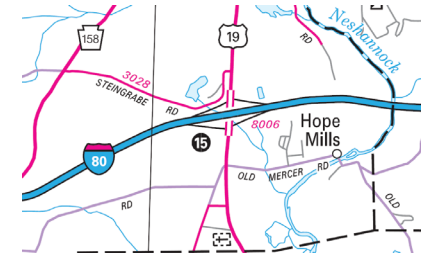
Ramp Segment Number and Ramp Segment Length Information:

Segment	Length	Segment	Length	Segment	Length	Segment	Length
0010	0922						
0250	0965						
0500	0647						
0750	0708						

Primary Route Interchange Exit Number: 15

Secondary Route Interchange Exit Number

PennDOT Type 10 Map View:



Last Date Modified: Sep 30, 2020

County: 43

RMS Interchange Information

Print Form

Bureau of Maintenance & Operations
Asset Management Division



Interchange Number: 8008

Interchange Name: I-79 & I-80

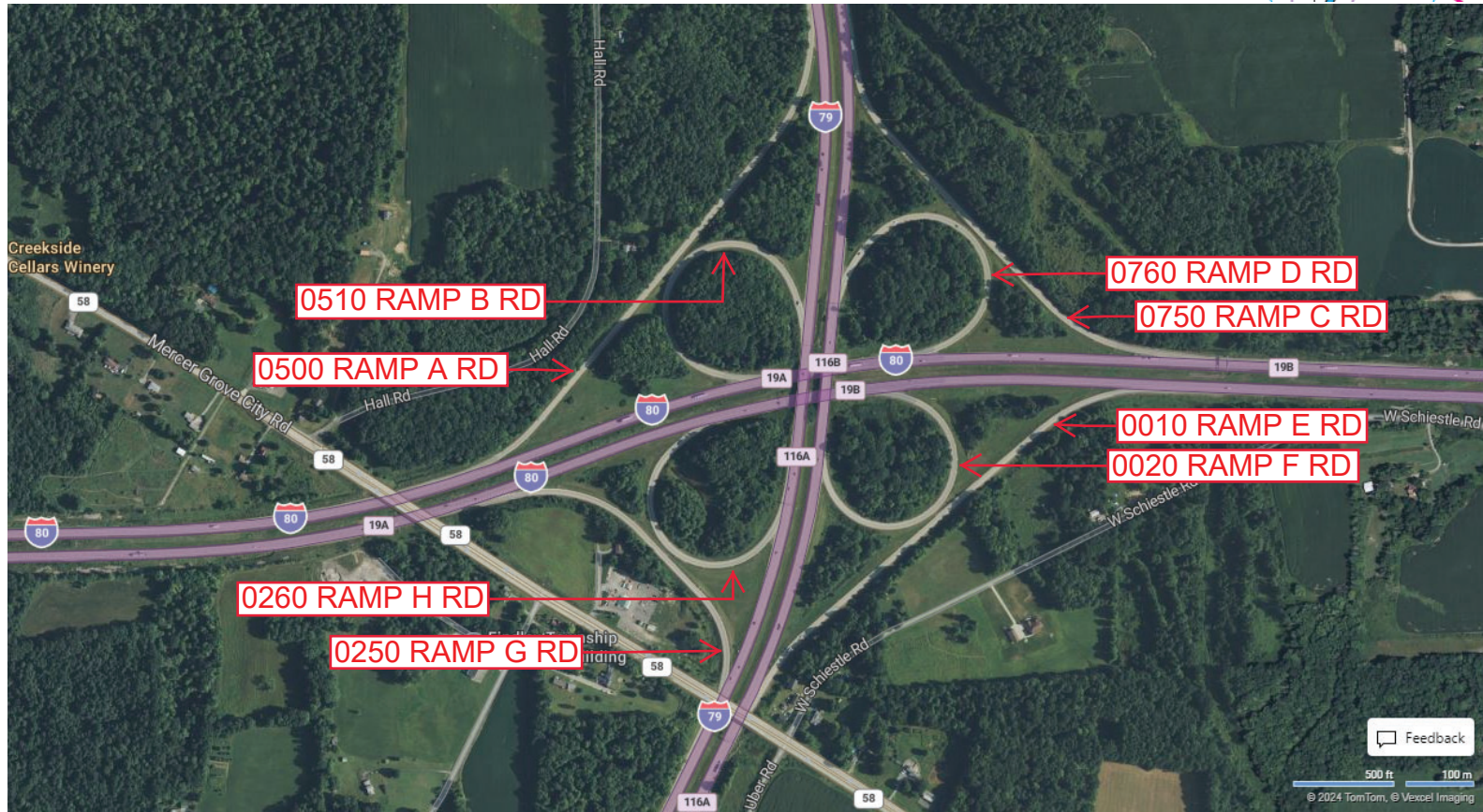
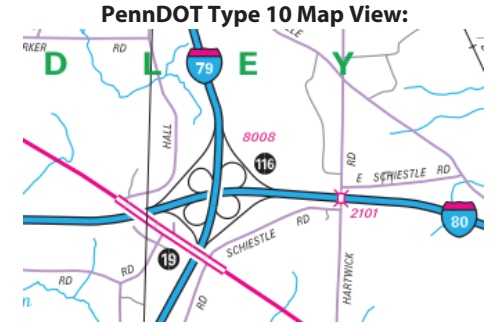
Intersecting SR's: I-79 & I-80

Ramp Segment Number and Ramp Segment Length Information:

Segment	Length	Segment	Length	Segment	Length	Segment	Length
0010	2397	0510	1603				
0020	1454	0750	2219				
0250	1612	0760	1532				
0260	1345						
0500	2867						

Primary Route Interchange Exit Number: 116A & 116B

Secondary Route Interchange Exit Number: 19A & 19B



Privacy Choices Consumer Health Privacy

© 2024 TomTom, © Vexcel Imaging

© 2024 Microsoft

Last Date Modified:

Jul 26, 2024

County: 43

RMS Interchange Information

Print Form

Bureau of Maintenance & Operations
Asset Management Division



Interchange Number: 8010

Interchange Name: GROVE CITY/SANDY LAKE INT

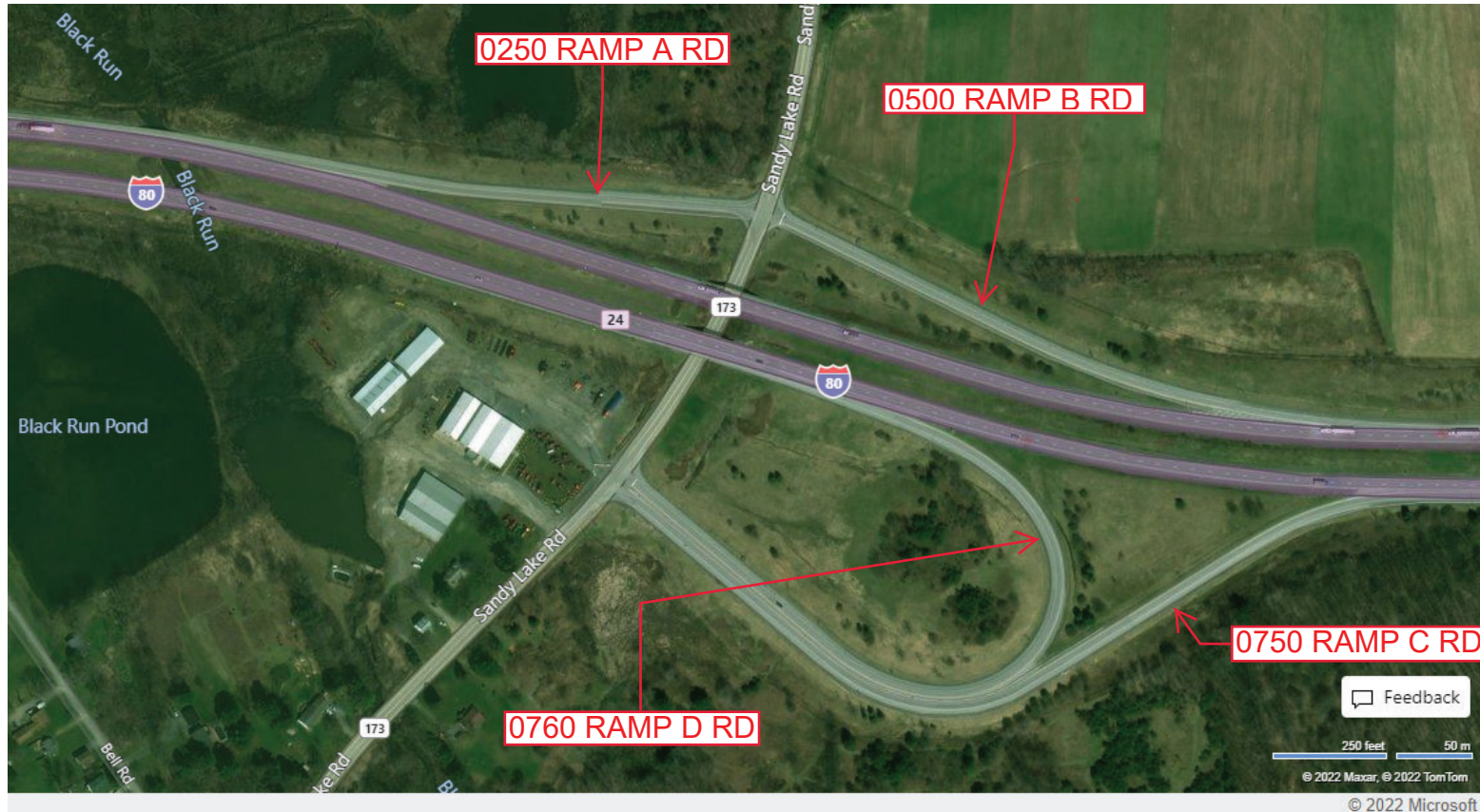
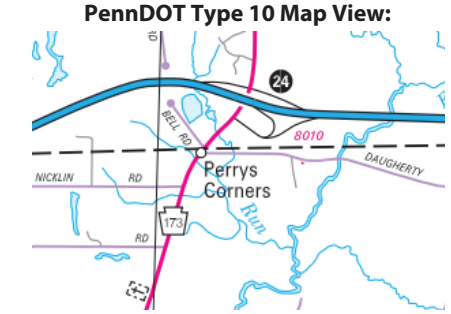
Intersecting SR's: I-80 & PA 173 Grove City Rd

Ramp Segment Number and Ramp Segment Length Information:

Segment	Length	Segment	Length	Segment	Length	Segment	Length
0250	0847						
0500	1099						
0750	1975						
0760	1828						

Primary Route Interchange Exit Number: 24

Secondary Route Interchange Exit Number



Last Date Modified:

May 23, 2022

County: 43

RMS Interchange Information

Print Form

Bureau of Maintenance & Operations
Asset Management Division



Interchange Number: 8012

Interchange Name: WEST MIDDLESEX

Intersecting SR's: I-376 & PA 18 New Castle Rd

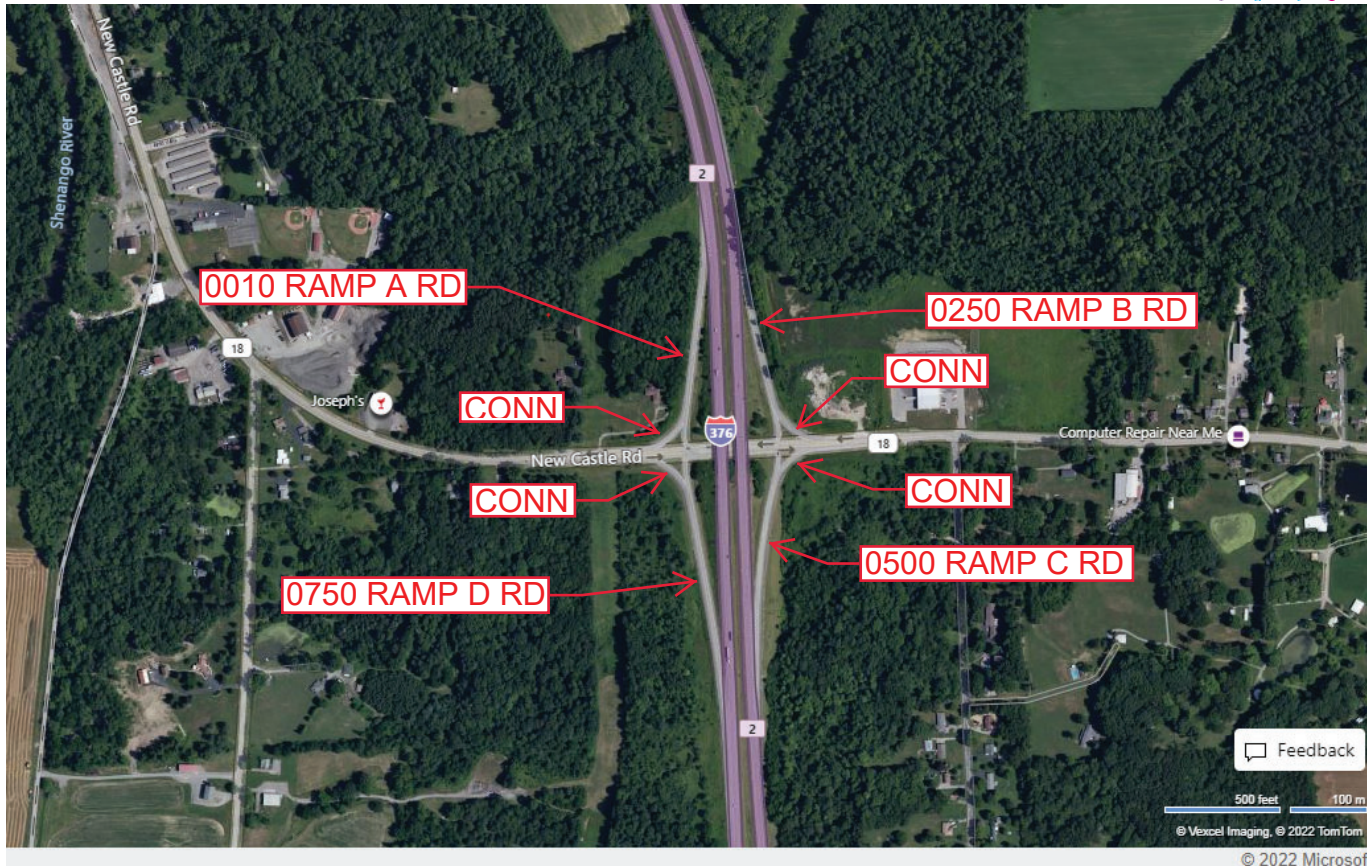
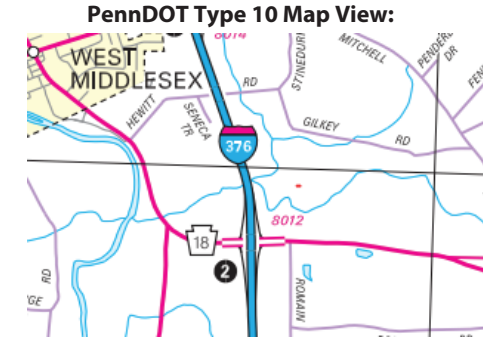
Ramp Segment Number and Ramp Segment Length Information:

Segment	Length	Segment	Length	Segment	Length	Segment	Length
0010	0898						
0250	0810						
0500	0750						
0750	1115						

Primary Route Interchange Exit Number

2

Secondary Route Interchange Exit Number



Last Date Modified:

May 24, 2022

County: 43

RMS Interchange Information

Bureau of Maintenance & Operations
Asset Management Division

Print Form



Interchange Number: 8014

Interchange Name: WEST MIDDLESEX INT

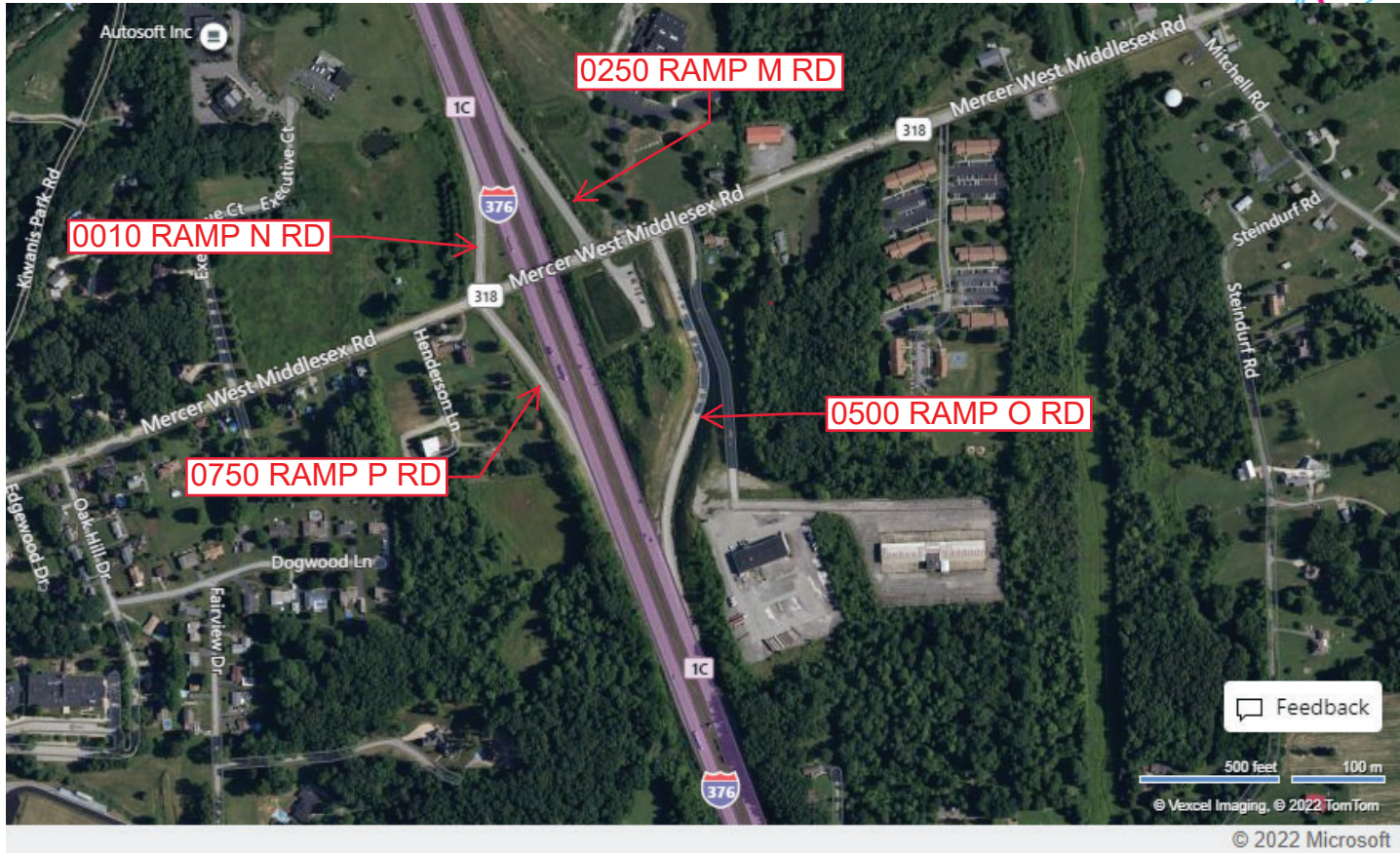
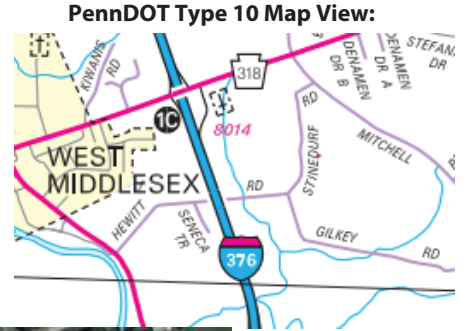
Intersecting SR's: I-376 & PA 318 Mercer Rd

Ramp Segment Number and Ramp Segment Length Information:

Segment	Length	Segment	Length	Segment	Length	Segment	Length
0010	0447						
0250	0630						
0500	1246						
0750	0571						

Primary Route Interchange Exit Number: 1C

Secondary Route Interchange Exit Number:



Feedback
500 feet 100 m
© Vexcel Imaging, © 2022 TomTom
© 2022 Microsoft

Last Date Modified: May 24, 2022

County: 43

RMS Interchange Information

Print Form

Bureau of Maintenance & Operations
Asset Management Division



Interchange Number: 8016

Interchange Name: PA 760 & PA 18

Intersecting SR's: PA 760 & PA 18 Hermitage Rd/New Castle Rd

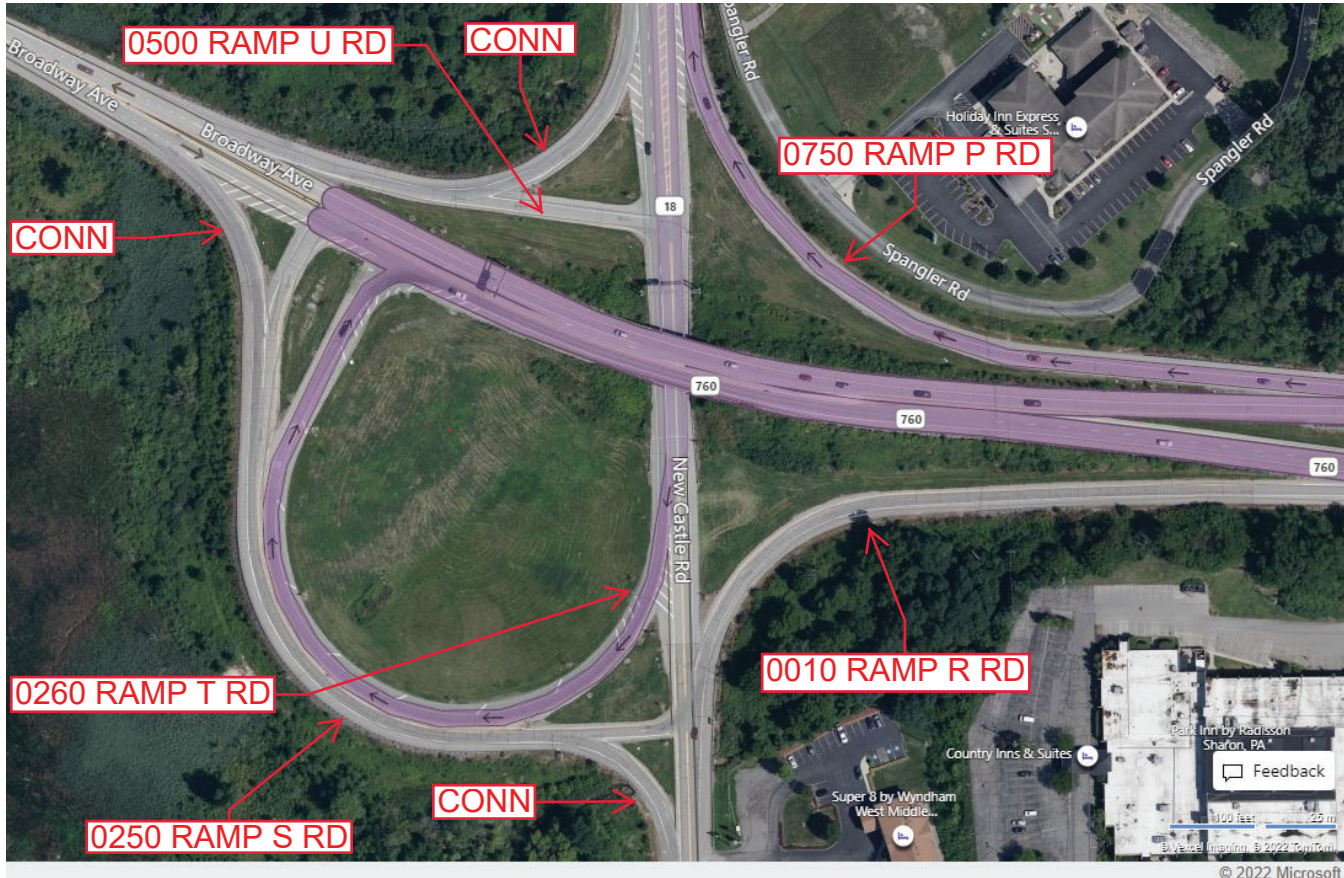
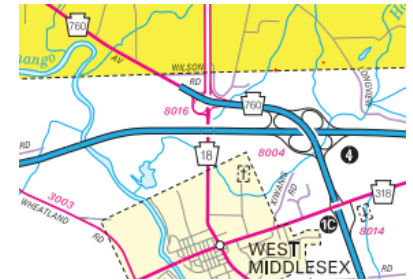
Ramp Segment Number and Ramp Segment Length Information:

Segment	Length	Segment	Length	Segment	Length	Segment	Length
0010	0837						
0250	1030						
0260	0963						
0500	0430						
0750	0881						

Primary Route Interchange Exit Number

Secondary Route Interchange Exit Number

PennDOT Type 10 Map View:



Last Date Modified: May 26, 2022

County: 43

RMS Interchange Information

Print Form

Bureau of Maintenance & Operations
Asset Management Division



Interchange Number: 9102

Interchange Name: PA 18 NB JUGHANDLE

Intersecting SR's: PA 18 North Hermitage Rd & Wynnwood Dr

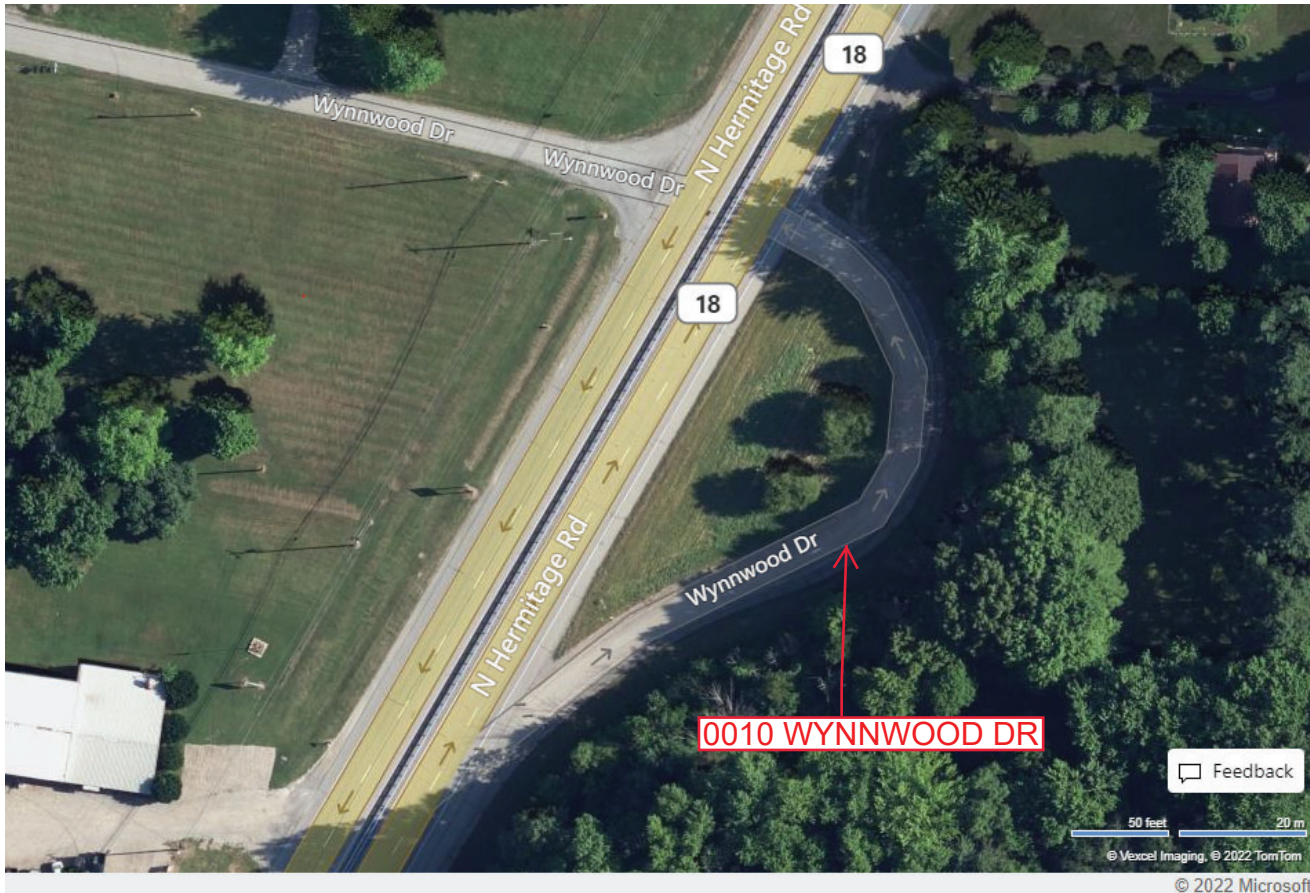
Ramp Segment Number and Ramp Segment Length Information:

Segment	Length	Segment	Length	Segment	Length	Segment	Length
0010	0382						

Primary Route Interchange Exit Number

Secondary Route Interchange Exit Number

PennDOT Type 10 Map View:



Feedback

50 feet 20 m
© Vexcel Imaging, © 2022 TomTom

© 2022 Microsoft

Last Date Modified:

May 27, 2022

County: 43

RMS Interchange Information

Print Form

Interchange Number: 9103

Bureau of Maintenance & Operations
Asset Management Division



Interchange Name: WYE RD

Intersecting SR's: PA 18 North Hermitage Rd & Thomason Rd

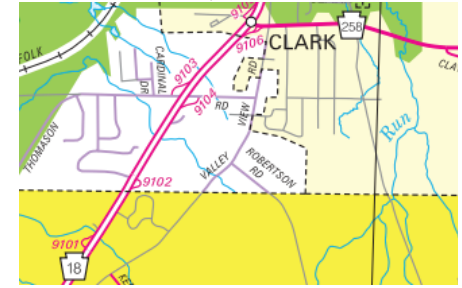
Ramp Segment Number and Ramp Segment Length Information:

Segment	Length	Segment	Length	Segment	Length	Segment	Length
0010	0383						

Primary Route Interchange Exit Number

Secondary Route Interchange Exit Number

PennDOT Type 10 Map View:



Last Date Modified: Dec 7, 2023

County: 43

RMS Interchange Information

Print Form

Bureau of Maintenance & Operations
Roadway Management Division



Interchange Number: 9104

Interchange Name: JUGHANDLE RD

Intersecting SR's: PA 18 Hermitage & TWP Thomason Rd

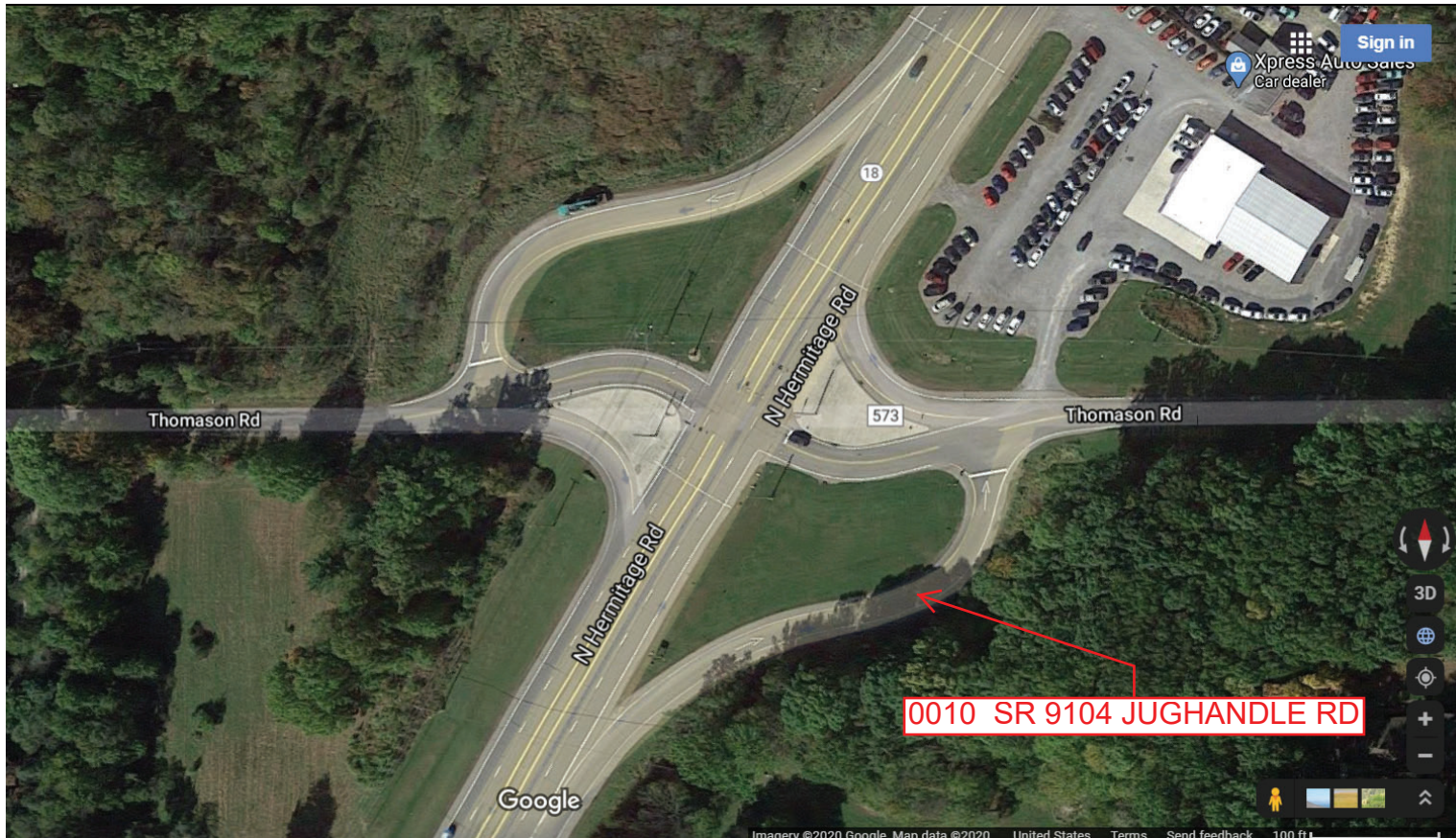
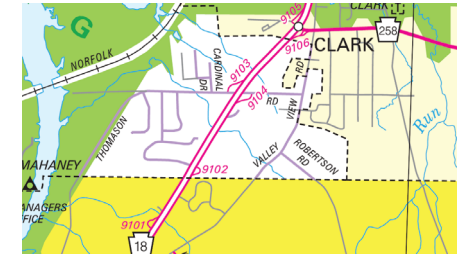
Ramp Segment Number and Ramp Segment Length Information:

Segment	Length	Segment	Length	Segment	Length	Segment	Length
0010	0374						

Primary Route
Interchange Exit
Number

Secondary Route
Interchange Exit
Number

PennDOT Type 10 Map View:



Last Date Modified: Aug 6, 2020

County: 43

RMS Interchange Information

Print Form

Bureau of Maintenance & Operations
Asset Management Division



Interchange Number: 9105

Interchange Name: JUGHANDLE RD

Intersecting SR's: PA 18 North Hermitage Rd & PA 258 Lake Rd

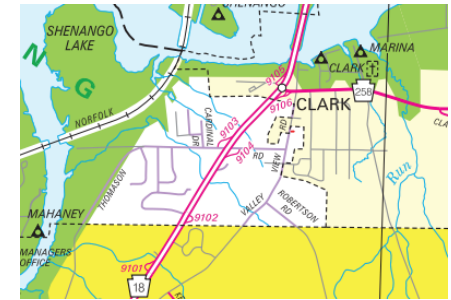
Ramp Segment Number and Ramp Segment Length Information:

Segment	Length	Segment	Length	Segment	Length	Segment	Length
0010	0409						

Primary Route Interchange Exit Number

Secondary Route Interchange Exit Number

PennDOT Type 10 Map View:



Feedback

100 feet 25 m

© Vexcel Imaging, © 2022 TomTom

© 2022 Microsoft

Last Date Modified:

May 27, 2022

County: 43

RMS Interchange Information

Bureau of Maintenance & Operations
Asset Management Division

Print Form



Interchange Number: 9106

Interchange Name: WYE RD

Intersecting SR's: PA 18 North Hermitage Rd & PA 258 Lake Rd

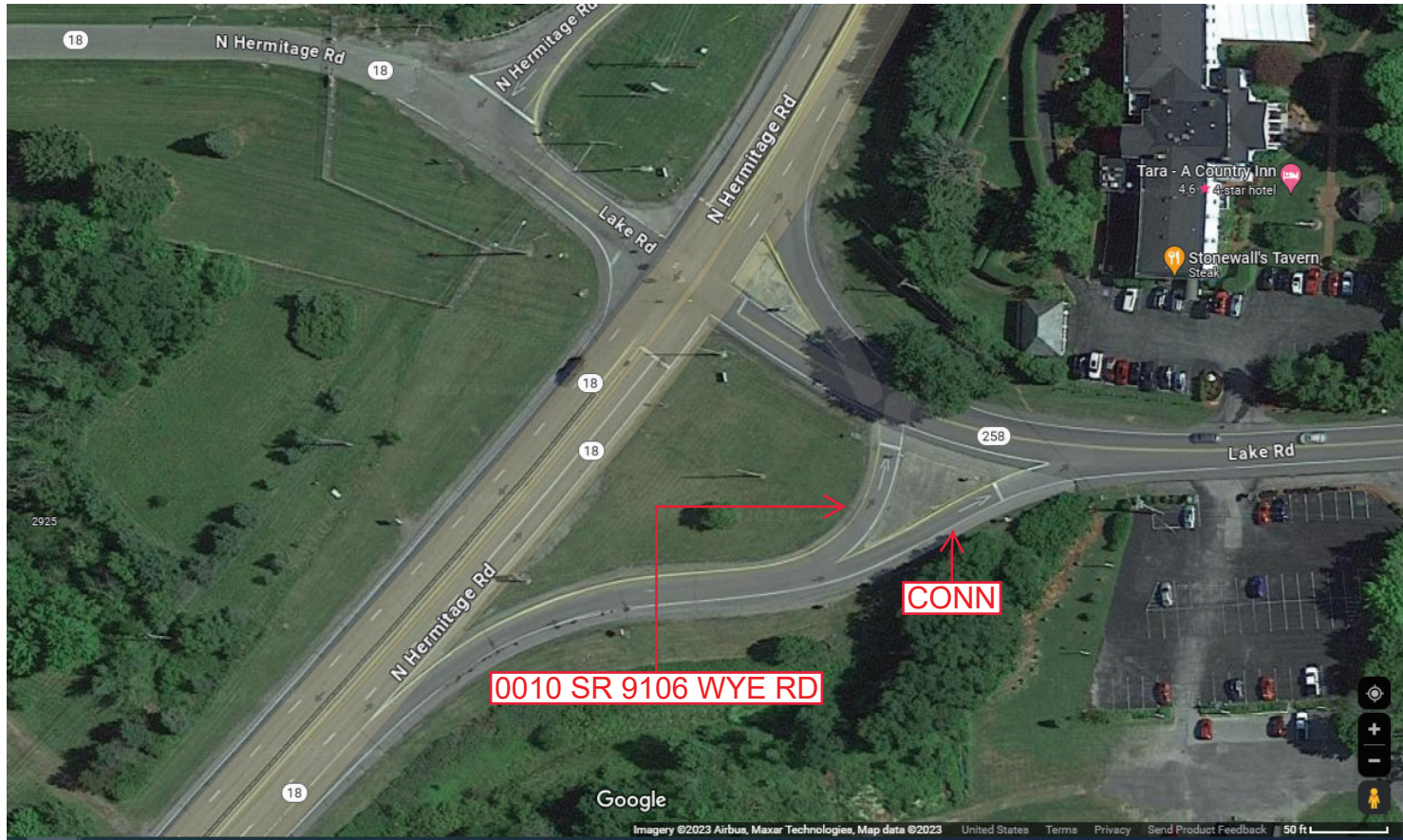
Ramp Segment Number and Ramp Segment Length Information:

Segment	Length	Segment	Length	Segment	Length	Segment	Length
0010	0362						

Primary Route Interchange Exit Number

Secondary Route Interchange Exit Number

PennDOT Type 10 Map View:



Last Date Modified: Dec 7, 2023

County: 43

RMS Interchange Information

Print Form

Bureau of Maintenance & Operations
Asset Management Division



Interchange Number: 9107

Interchange Name: JUGHANDLE RD

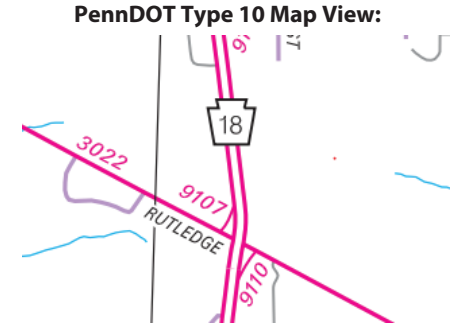
Intersecting SR's: PA 18 North Hermitage Rd & SR 3022 Rutledge Rd

Ramp Segment Number and Ramp Segment Length Information:

Segment	Length	Segment	Length	Segment	Length	Segment	Length
0010	0304						

Primary Route Interchange Exit Number

Secondary Route Interchange Exit Number



Feedback

100 feet 25 m

© Vexcel Imaging, © 2022 TomTom

© 2022 Microsoft

Last Date Modified: May 31, 2022

County: 43

RMS Interchange Information

Print Form

Bureau of Maintenance & Operations
Asset Management Division



Interchange Number: 9108

Interchange Name: JUGHANDLE RD

Intersecting SR's: PA 18 North Hermitage Rd & TWP Birchwood Dr

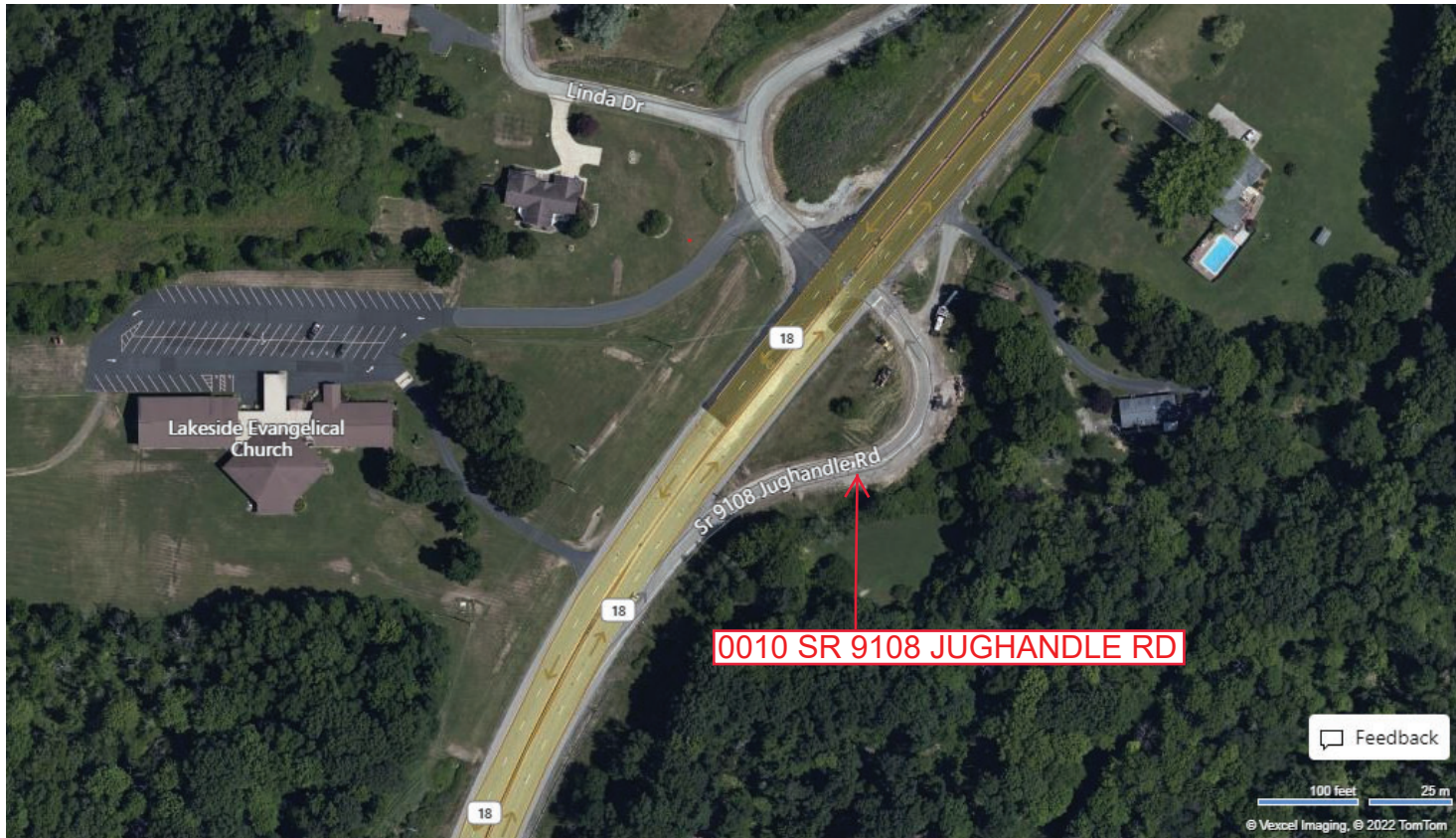
Ramp Segment Number and Ramp Segment Length Information:

Segment	Length	Segment	Length	Segment	Length	Segment	Length
0010	0362						

Primary Route Interchange Exit Number

Secondary Route Interchange Exit Number

PennDOT Type 10 Map View:



Feedback

100 feet 25 m
© Vexcel Imaging, © 2022 TomTom

© 2022 Microsoft

Last Date Modified: May 31, 2022

County: 43

RMS Interchange Information

Print Form

Interchange Number: 9109

Bureau of Maintenance & Operations
Asset Management Division



Interchange Name: WYE RD

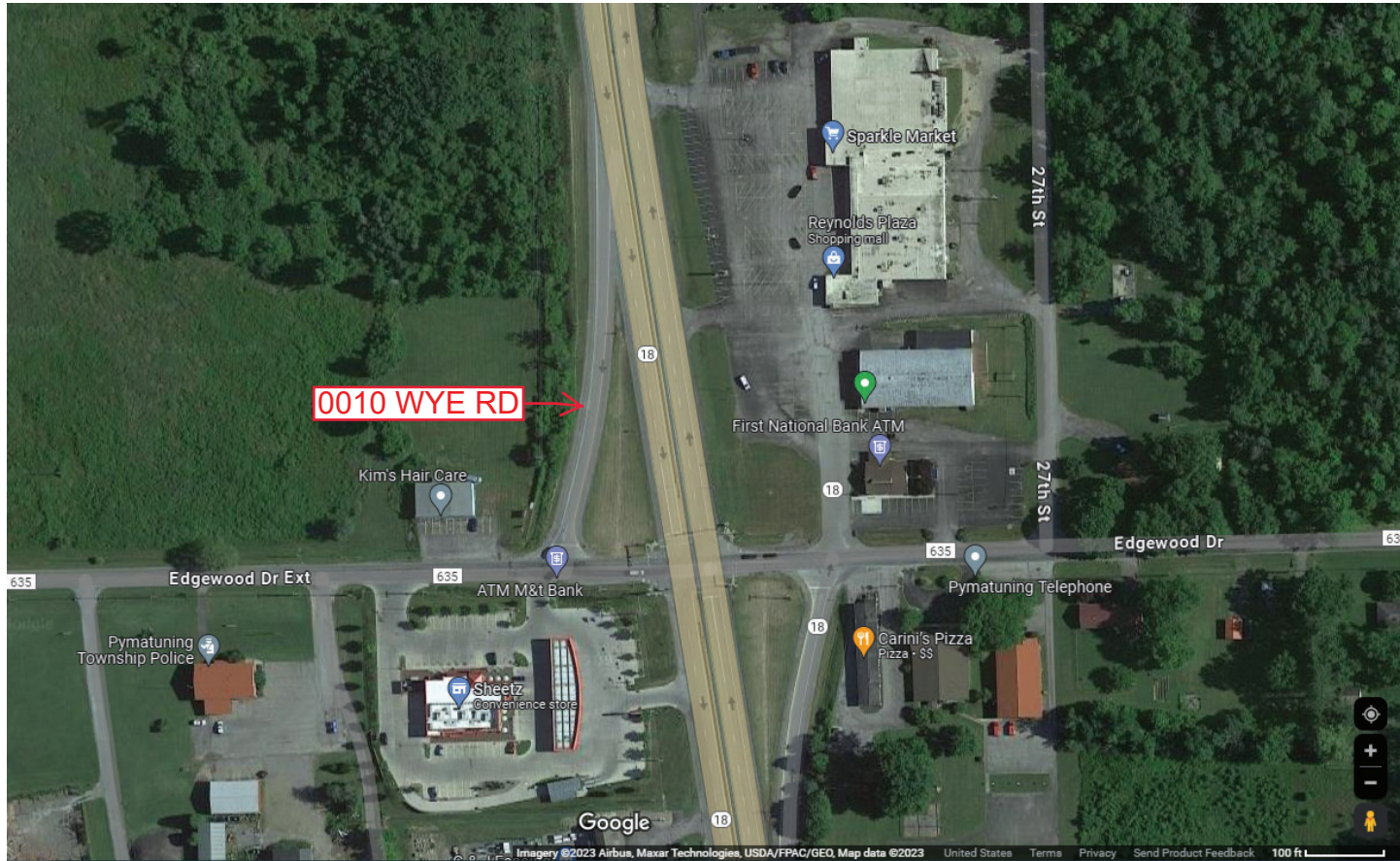
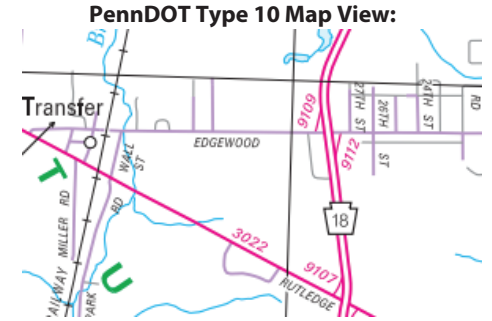
Intersecting SR's: PA 18 North Hermitage Rd & (TWP) Edgewood Dr Et

Ramp Segment Number and Ramp Segment Length Information:

Segment	Length	Segment	Length	Segment	Length	Segment	Length
0010	0363						

Primary Route Interchange Exit Number

Secondary Route Interchange Exit Number



Last Date Modified: Dec 7, 2023

County: 43

RMS Interchange Information

Print Form

Interchange Number: 9110

Bureau of Maintenance & Operations
Asset Management Division



Interchange Name: WYE RD

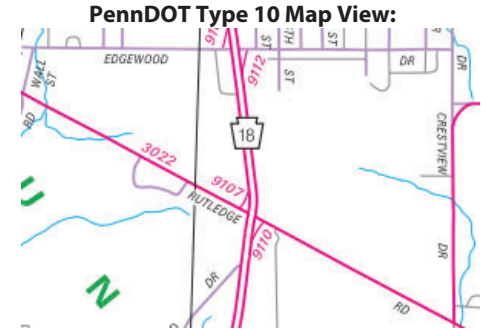
Intersecting SR's: PA 18 North Hermitage Rd & SR 3022 Rutledge Rd

Ramp Segment Number and Ramp Segment Length Information:

Segment	Length	Segment	Length	Segment	Length	Segment	Length
0010	0300						

Primary Route Interchange Exit Number

Secondary Route Interchange Exit Number



Last Date Modified: Dec 7, 2023

County: 62

RMS Interchange Information

Bureau of Maintenance & Operations
Asset Management Division

Print Form



Interchange Number: 9111

Interchange Name: WYE RD

Intersecting SR's: PA 18 Hermitage Rd & (TWP) Colt Rd

Ramp Segment Number and Ramp Segment Length Information:

Segment	Length	Segment	Length	Segment	Length	Segment	Length
0010	0412						

Primary Route Interchange Exit Number

Secondary Route Interchange Exit Number

PennDOT Type 10 Map View:



Last Date Modified: Dec 13, 2023

County: 62

RMS Interchange Information

Print Form

Interchange Number: 9112

Bureau of Maintenance & Operations
Asset Management Division



Interchange Name: WYE RD

Intersecting SR's: PA 18 Hermitage Rd & (TWP) Edgewood Dr

Ramp Segment Number and Ramp Segment Length Information:

Segment	Length	Segment	Length	Segment	Length	Segment	Length
0010	0378						

Primary Route Interchange Exit Number

Secondary Route Interchange Exit Number

PennDOT Type 10 Map View:



Last Date Modified: Dec 14, 2023

County: 43

RMS Interchange Information

Bureau of Maintenance & Operations
Asset Management Division

Print Form



Interchange Number: 9114

Interchange Name: JUGHANDLE RD

Intersecting SR's: PA 18 Hermitage Rd & SR 4012 Reynolds Ind Park Rd

Ramp Segment Number and Ramp Segment Length Information:

Segment	Length	Segment	Length	Segment	Length	Segment	Length
0010	0577						

Primary Route Interchange Exit Number

Secondary Route Interchange Exit Number

PennDOT Type 10 Map View:



Last Date Modified: Jun 3, 2022

County: 62

RMS Interchange Information

Print Form

Interchange Number: 9115

Bureau of Maintenance & Operations
Asset Management Division



Interchange Name: WYE RD

Intersecting SR's: PA 18 Hermitage Rd & SR 4003 Good Hope Rd

Ramp Segment Number and Ramp Segment Length Information:

Segment	Length	Segment	Length	Segment	Length	Segment	Length
0010	0260						

Primary Route Interchange Exit Number

Secondary Route Interchange Exit Number

PennDOT Type 10 Map View:



Last Date Modified: Dec 14, 2023

County: 43

RMS Interchange Information

Bureau of Maintenance & Operations
Asset Management Division

Print Form



Interchange Number: 9116

Interchange Name: JUGHANDLE RD

Intersecting SR's: PA 18 Sharon Rd & TWP Crestview Dr Ext

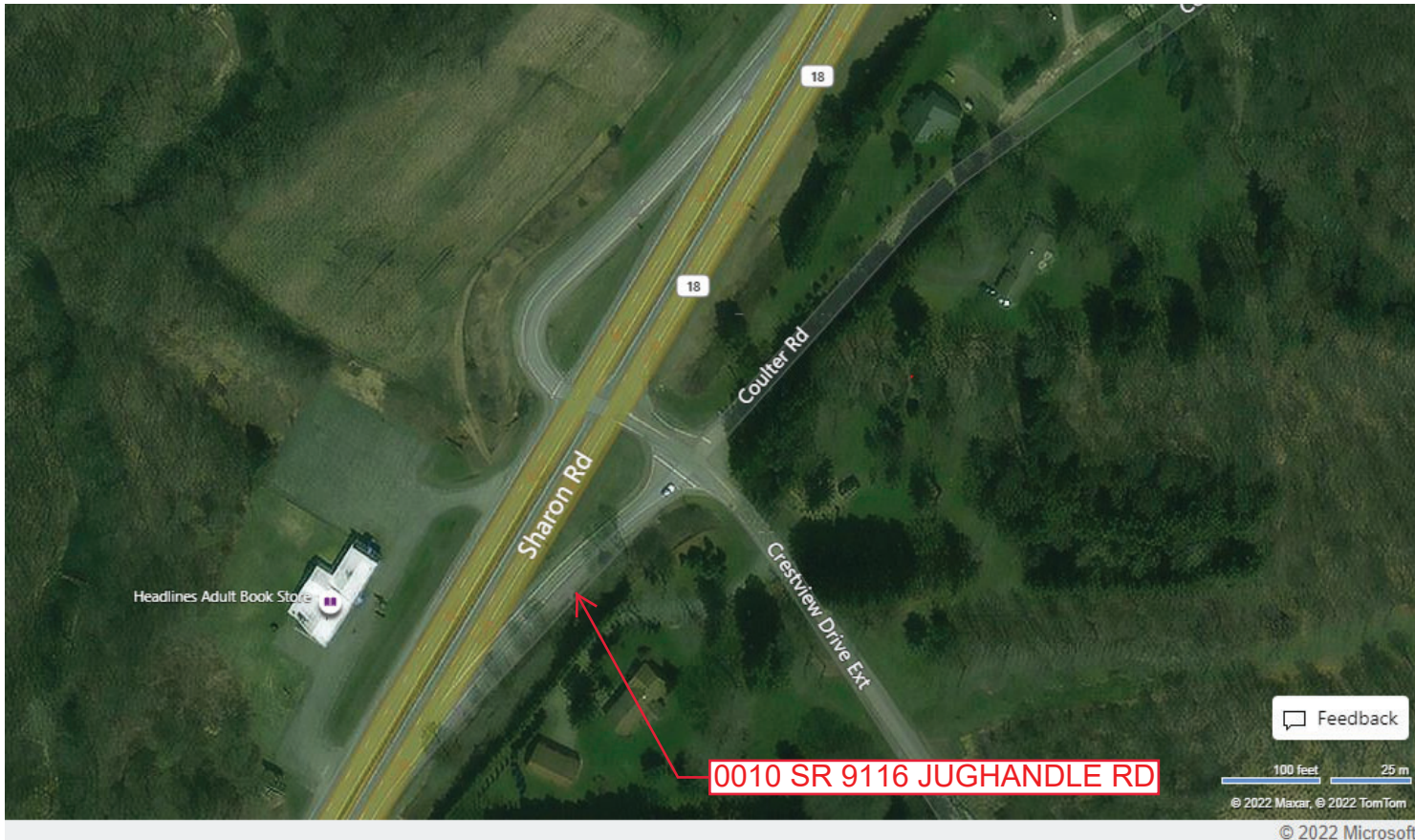
Ramp Segment Number and Ramp Segment Length Information:

Segment	Length	Segment	Length	Segment	Length	Segment	Length
0010	0236						

Primary Route Interchange Exit Number

Secondary Route Interchange Exit Number

PennDOT Type 10 Map View:



Feedback

100 feet 25 m

© 2022 Maxar, © 2022 TomTom

© 2022 Microsoft

Last Date Modified: Jun 3, 2022

County: 43

RMS Interchange Information

Bureau of Maintenance & Operations
Asset Management Division

Print Form



Interchange Number: 9118

Interchange Name: JUGHANDLE RD

Intersecting SR's: PA 18 Sharon Rd & SR 4003 Wasser Bridge Rd

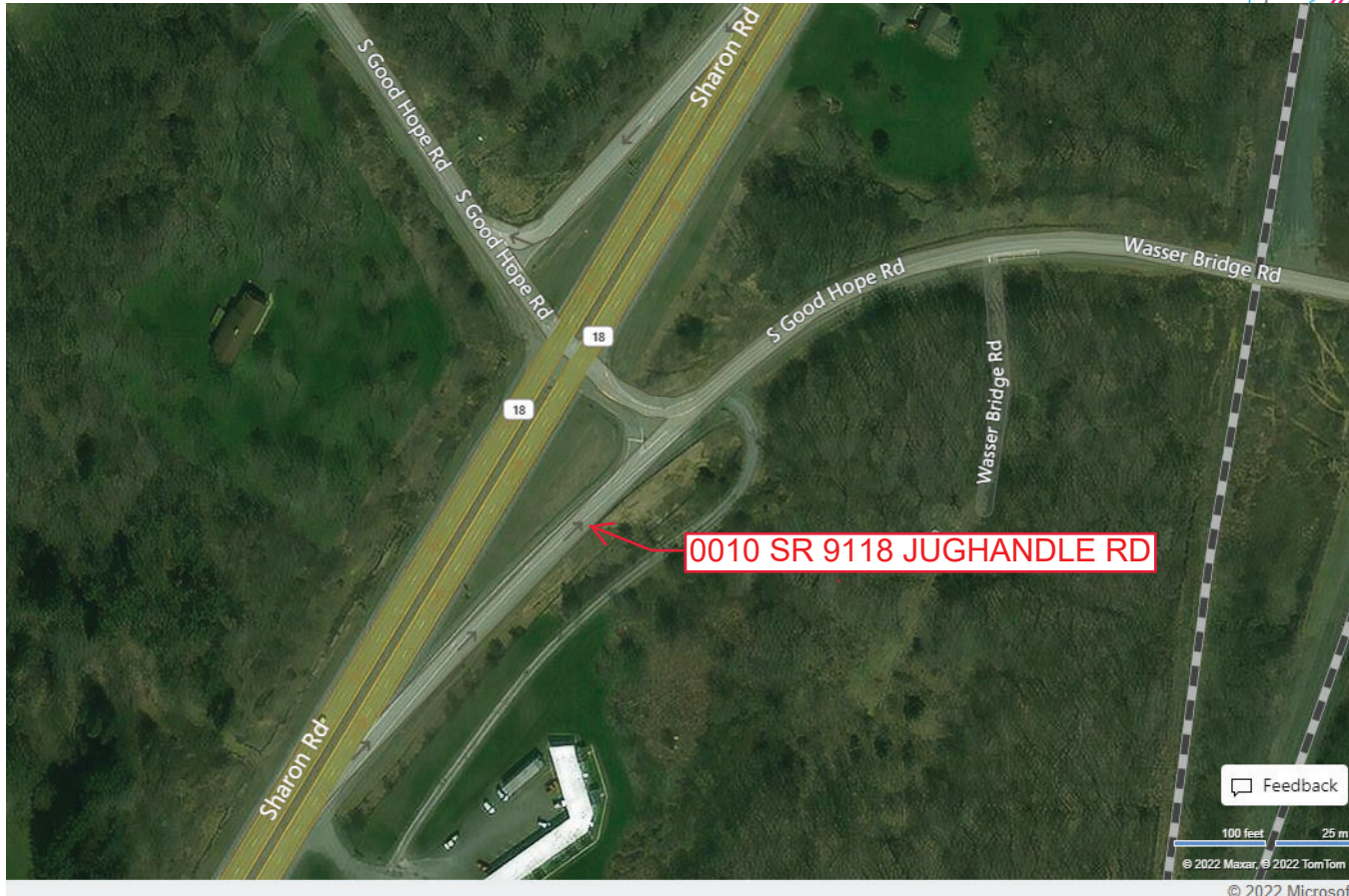
Ramp Segment Number and Ramp Segment Length Information:

Segment	Length	Segment	Length	Segment	Length	Segment	Length
0010	0378						

Primary Route Interchange Exit Number

Secondary Route Interchange Exit Number

PennDOT Type 10 Map View:



Feedback

100 feet 25 m

© 2022 Maxar, © 2022 TomTom

© 2022 Microsoft

Last Date Modified: Jun 3, 2022

County: 43

RMS Interchange Information

Print Form

Interchange Number: 9204

Bureau of Maintenance & Operations
Asset Management Division



Interchange Name: SHENANGO TWP WELCOME CTR

Intersecting SR's: I-80 ZH Confair Hw

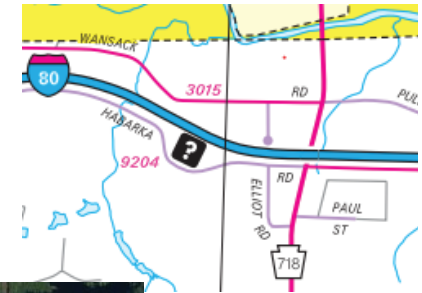
Ramp Segment Number and Ramp Segment Length Information:

Segment	Length	Segment	Length	Segment	Length	Segment	Length
0010	1477						

Primary Route Interchange Exit Number

Secondary Route Interchange Exit Number

PennDOT Type 10 Map View:



Feedback

100 feet 25 m

© Vexcel Imaging, © 2022 TomTom

© 2022 Microsoft

Last Date Modified:

Jun 3, 2022

County: 43

RMS Interchange Information

Bureau of Maintenance & Operations
Asset Management Division

Print Form



Interchange Number: 9204

Interchange Name: DEER CREEK TWP REST AREA

Intersecting SR's: I-79 Raymond P Shafer Hw

Ramp Segment Number and Ramp Segment Length Information:

Segment	Length	Segment	Length	Segment	Length	Segment	Length
0010	1428						
0020	1076						

Primary Route Interchange Exit Number

Secondary Route Interchange Exit Number

PennDOT Type 10 Map View:



Feedback

250 feet 50 m

© 2022 Maxar, © 2022 TomTom

© 2022 Microsoft

Last Date Modified:

Jun 3, 2022

County: 43

RMS Interchange Information

Print Form

Interchange Number: 9205

Bureau of Maintenance & Operations
Roadway Management Division



Interchange Name: DEER CREEK TWP REST AREA

Intersecting SR's: I-79 Raymond P Shafer Hw

Ramp Segment Number and Ramp Segment Length Information:

Segment	Length	Segment	Length	Segment	Length	Segment	Length
0010	1428						
0020	1076						

Primary Route
Interchange Exit
Number

Secondary Route
Interchange Exit
Number

PennDOT Type 10 Map View:



Last Date Modified:

Sep 22, 2020

County: 43

RMS Interchange Information

Print Form

Interchange Number: 9206

Bureau of Maintenance & Operations
Asset Management Division



Interchange Name: DEER CREEK TWP REST AREA

Intersecting SR's: I-79 N.B. Raymond P Shafer Hw

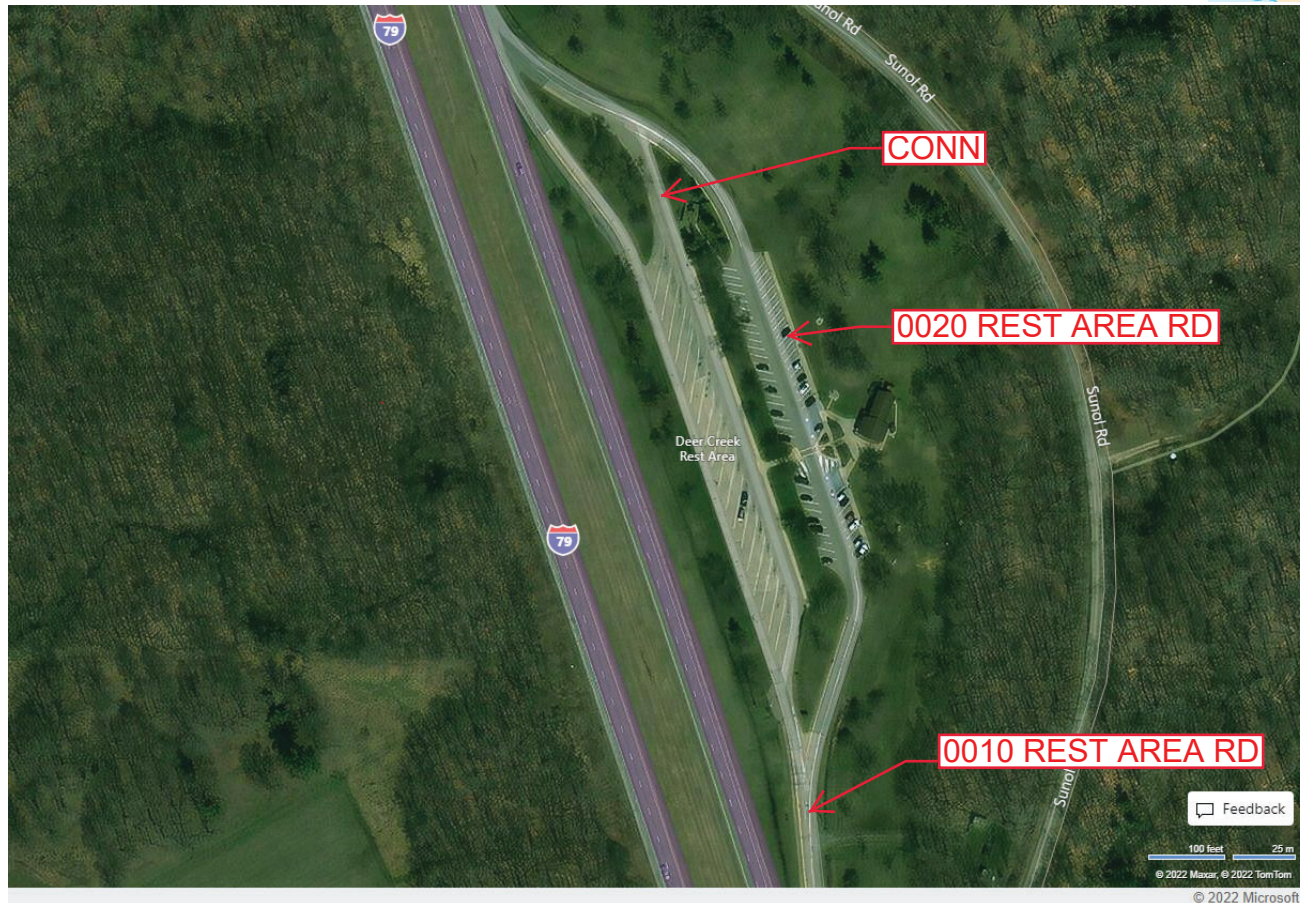
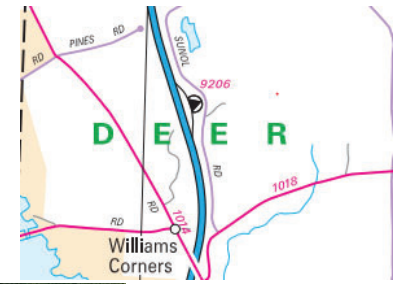
Ramp Segment Number and Ramp Segment Length Information:

Segment	Length	Segment	Length	Segment	Length	Segment	Length
0010	1585						
0020	1084						

Primary Route Interchange Exit Number

Secondary Route Interchange Exit Number

PennDOT Type 10 Map View:



Feedback

100 feet 25 m
© 2022 Maxar, © 2022 TomTom

© 2022 Microsoft

Last Date Modified:

Jun 9, 2022

County: 43

RMS Interchange Information

Bureau of Maintenance & Operations
Asset Management Division

Print Form



Interchange Number: 9401

Interchange Name: GARRETT ROAD

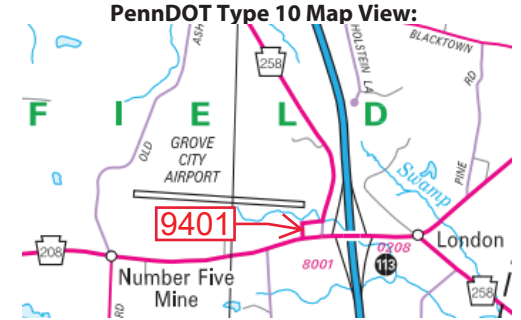
Intersecting SR's: PA 208 & PA 258

Ramp Segment Number and Ramp Segment Length Information:

Segment	Length	Segment	Length	Segment	Length	Segment	Length
0010	0302						
0020	0200						

Primary Route Interchange Exit Number

Secondary Route Interchange Exit Number



Last Date Modified: Jul 26, 2024

County: 43

RMS Interchange Information

Print Form

Interchange Number: 9402

Bureau of Maintenance & Operations
Asset Management Division



Interchange Name: JUGHANDLE RD

Intersecting SR's: PA 18 Hermitage Rd & (TWP) Walnut St

Ramp Segment Number and Ramp Segment Length Information:

Segment	Length	Segment	Length	Segment	Length	Segment	Length
0010	0339						

Primary Route Interchange Exit Number

Secondary Route Interchange Exit Number

PennDOT Type 10 Map View:



Last Date Modified: Jan 9, 2025

County: 43

RMS Interchange Information

Print Form

Interchange Number: 9403

Bureau of Maintenance & Operations
Asset Management Division



Interchange Name: PA 18 SB JUGHANDLE

Intersecting SR's: PA 18 Hermitage Rd

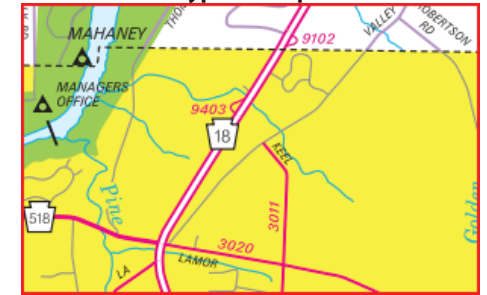
Ramp Segment Number and Ramp Segment Length Information:

Segment	Length	Segment	Length	Segment	Length	Segment	Length
0010	0246						

Primary Route
Interchange Exit
Number

Secondary Route
Interchange Exit
Number

PennDOT Type 10 Map View:



Feedback

© 2023 TomTom, © Vexcel Imaging

© 2023 Microsoft

Last Date Modified:

Jan 9, 2025

County: 43

RMS Interchange Information

Bureau of Maintenance & Operations
Asset Management Division

Print Form



Interchange Number: 9405

Interchange Name: JUGHANDLE RD

Intersecting SR's: PA 18 Hermitage Rd & (TWP) Crestview Dr

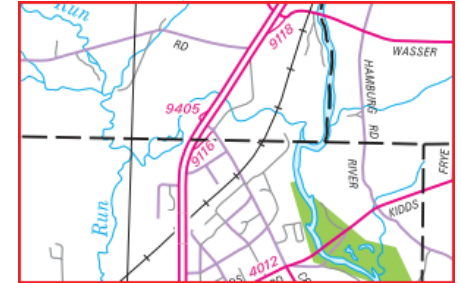
Ramp Segment Number and Ramp Segment Length Information:

Segment	Length	Segment	Length	Segment	Length	Segment	Length
0010	0317						

Primary Route Interchange Exit Number

Secondary Route Interchange Exit Number

PennDOT Type 10 Map View:



Feedback

50 ft 20 m

© 2023 TomTom, © Vexcel Imaging

© 2023 Microsoft

Last Date Modified:

Jan 9, 2025