

County: **60**

RMS Interchange Information

Print Form

Bureau of Maintenance & Operations
Asset Management Division



Interchange Number: **8002**

Interchange Name: **BARKEYVILLE INT**

Intersecting SR's: **I-80 & PA 8 Wm Flinn Hw**

Ramp Segment Number and Ramp Segment Length Information:

Segment	Length	Segment	Length	Segment	Length	Segment	Length
0010	1177						
0250	0903						
0500	1120						
0750	0869						

Primary Route Interchange Exit Number: **29**

Secondary Route Interchange Exit Number:

PennDOT Type 10 Map View:



Privacy Choices Consumer Health Privacy

© 2024 TomTom, © OpenStreetMap, © Vexcel Imaging

© 2025 Microsoft

Last Date Modified: **Jan 16, 2025**

County: 60

RMS Interchange Information

Print Form

Bureau of Maintenance & Operations
Asset Management Division



Interchange Number: 8008

Interchange Name: CLINTONVILLE INT

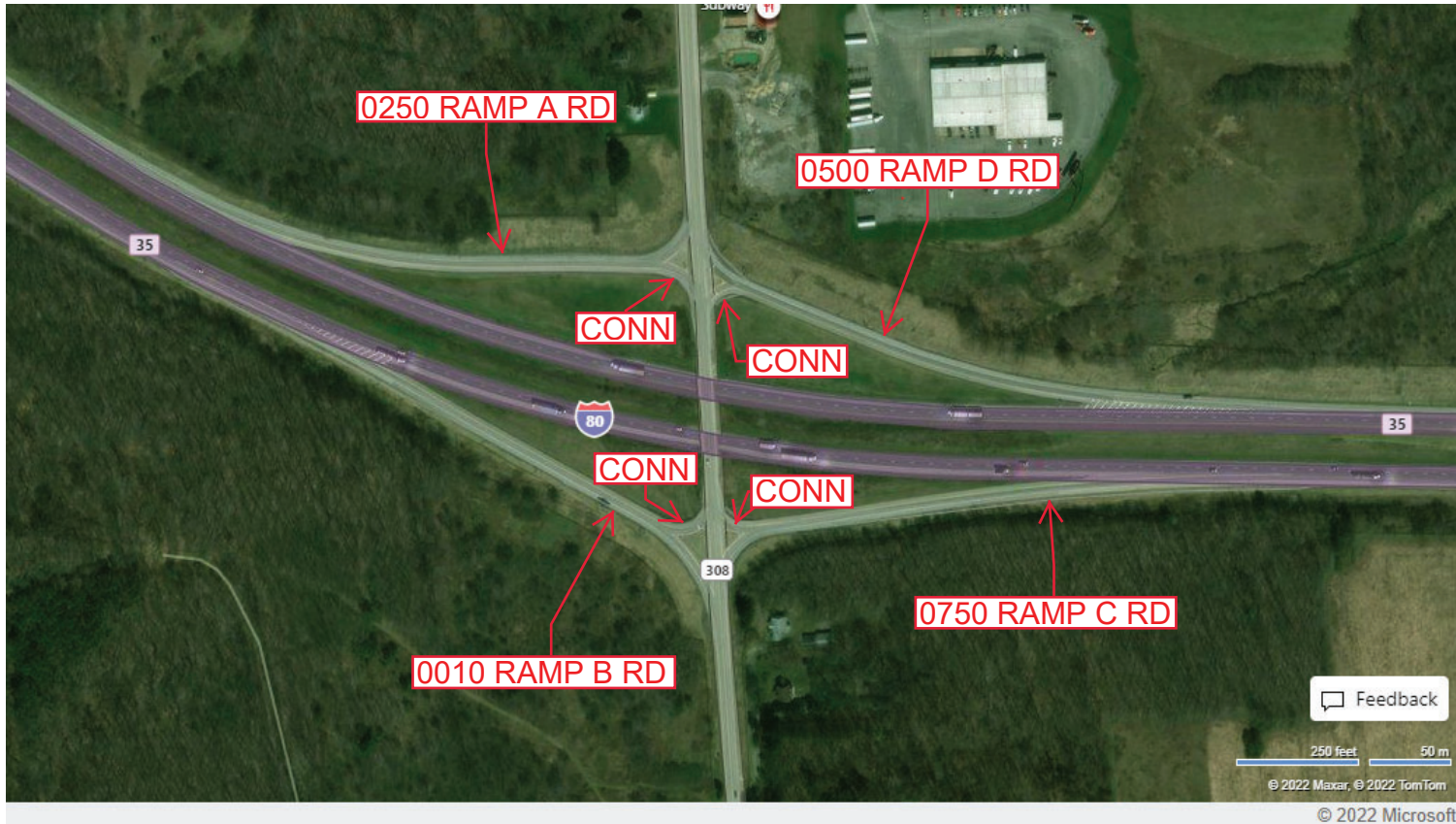
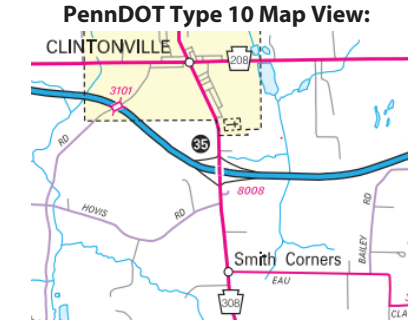
Intersecting SR's: I-80 & PA 308

Ramp Segment Number and Ramp Segment Length Information:

Segment	Length	Segment	Length	Segment	Length	Segment	Length
0010	0811						
0250	0847						
0500	0836						
0750	0755						

Primary Route Interchange Exit Number: 35

Secondary Route Interchange Exit Number



Last Date Modified: Jun 10, 2022

County: 60

RMS Interchange Information

Print Form

Bureau of Maintenance & Operations
Asset Management Division



Interchange Number: 8010

Interchange Name: EMLENTON & EAU CLAIRE INT

Intersecting SR's: I-80 & PA 38

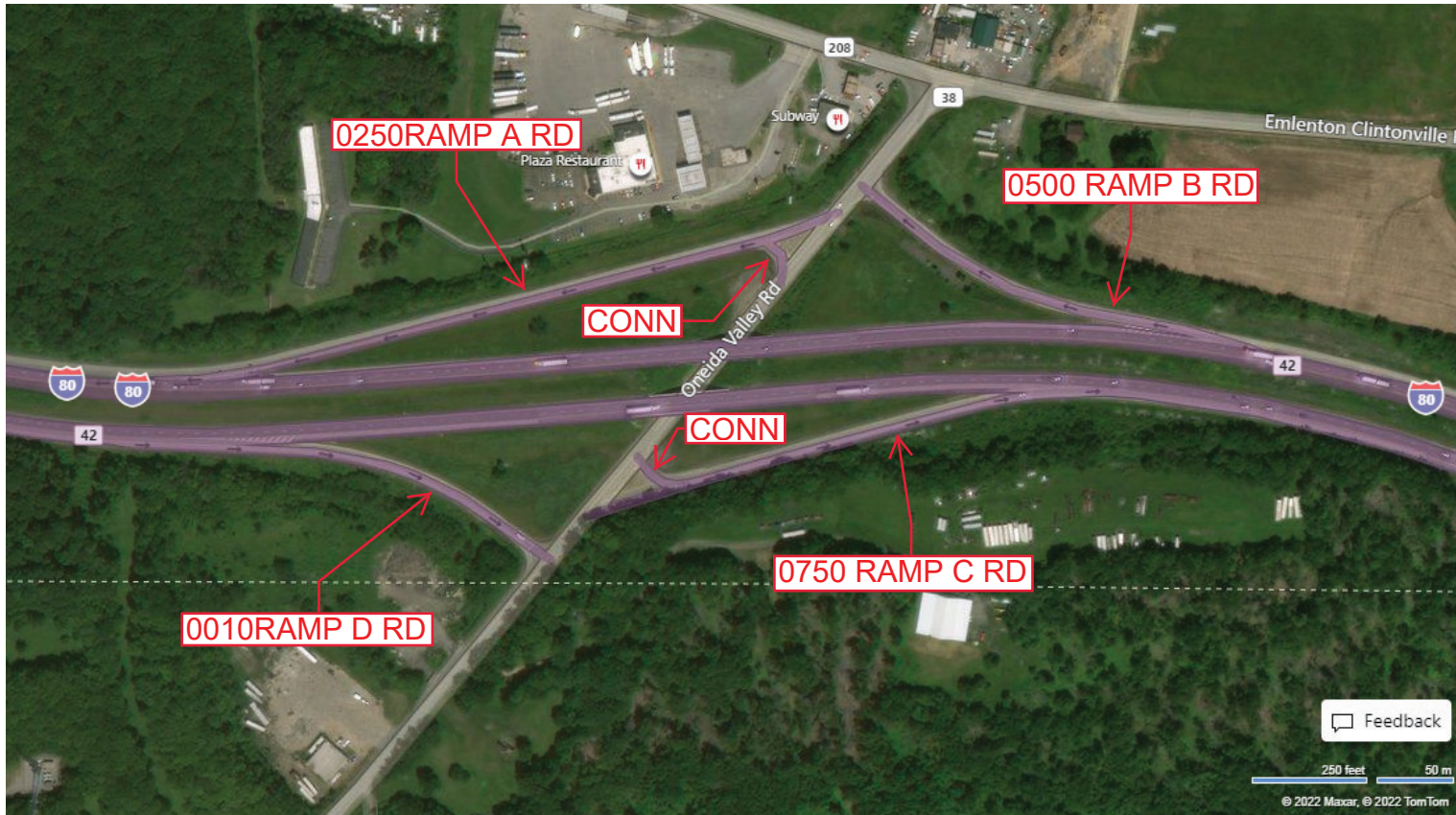
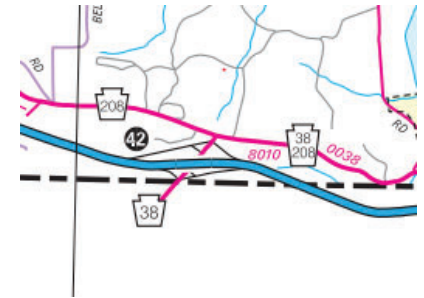
Ramp Segment Number and Ramp Segment Length Information:

Segment	Length	Segment	Length	Segment	Length	Segment	Length
0010	0621						
0250	1305						
0500	0665						
0750	0910						

Primary Route Interchange Exit Number: 42

Secondary Route Interchange Exit Number

PennDOT Type 10 Map View:



Feedback

250 feet 50 m
© 2022 Maxar, © 2022 TomTom

© 2022 Microsoft

Last Date Modified: Jun 13, 2022

County: 60

RMS Interchange Information

Bureau of Maintenance & Operations
Asset Management Division

Print Form



Interchange Number: 8012

Interchange Name: PA 8 & SR 3003, SR 6008

Intersecting SR's: PA 8, SR 3003 Georgetown Rd & SR 6008 Georgetown Rd

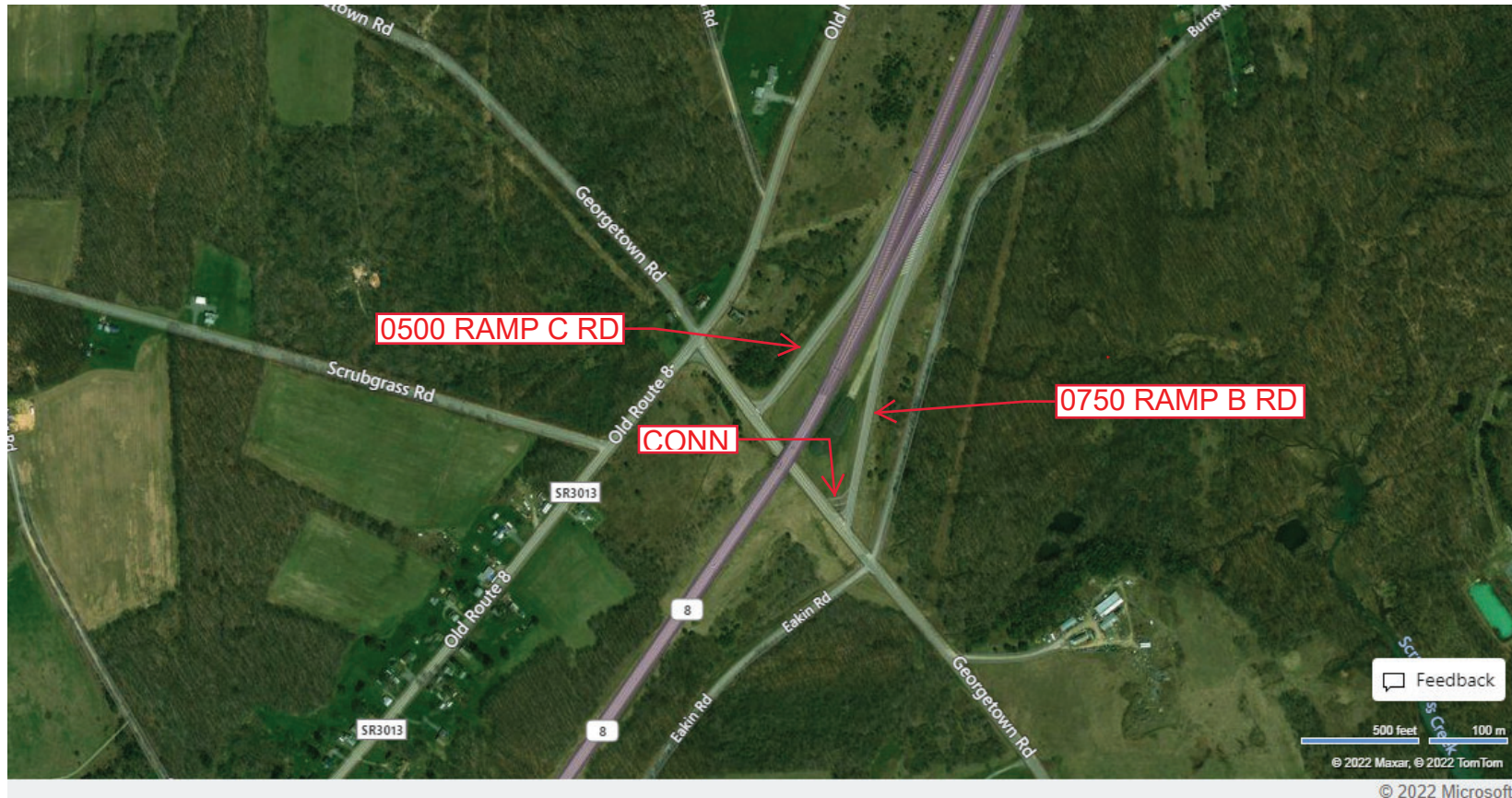
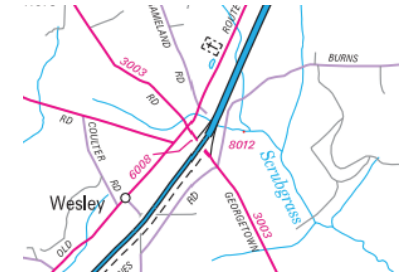
Ramp Segment Number and Ramp Segment Length Information:

Segment	Length	Segment	Length	Segment	Length	Segment	Length
0500	0874						
0750	1448						

Primary Route Interchange Exit Number

Secondary Route Interchange Exit Number

PennDOT Type 10 Map View:



Last Date Modified: Jun 21, 2022

County: 60

RMS Interchange Information

Print Form

Bureau of Maintenance & Operations
Asset Management Division



Interchange Number: 8014

Interchange Name: PEARL BULLION INT

Intersecting SR's: PA 8 & PA 308

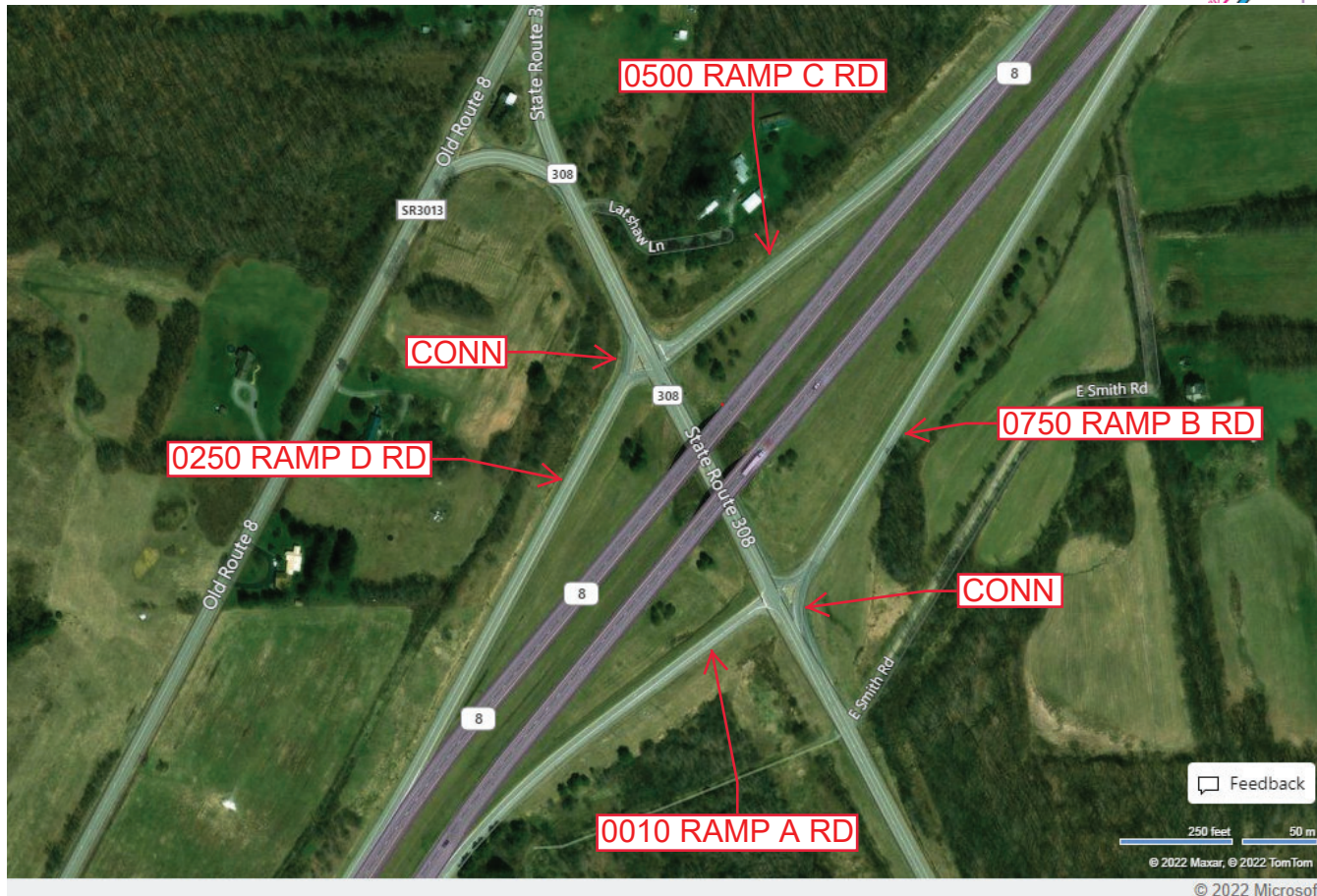
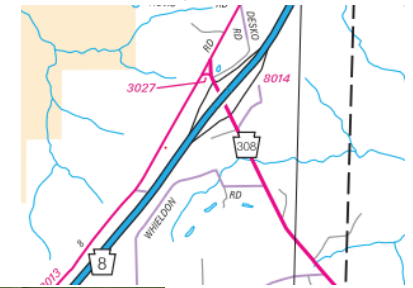
Ramp Segment Number and Ramp Segment Length Information:

Segment	Length	Segment	Length	Segment	Length	Segment	Length
0010	0947						
0250	1114						
0500	0869						
0750	1640						

Primary Route Interchange Exit Number

Secondary Route Interchange Exit Number

PennDOT Type 10 Map View:



Feedback

250 feet 50 m

© 2022 Maxar, © 2022 TomTom

© 2022 Microsoft

Last Date Modified:

Jun 21, 2022

County: **60**

RMS Interchange Information

Bureau of Maintenance & Operations
Asset Management Division

Print Form



Interchange Number: **9101**

Interchange Name: **PA 8 & PA 417 WYE**

Intersecting SR's: **PA 8 & PA 417**

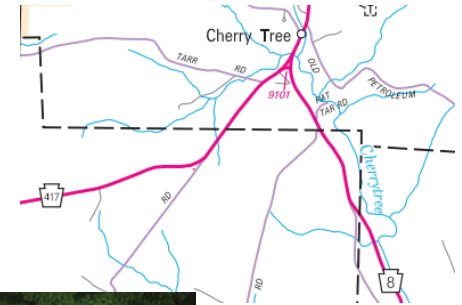
Ramp Segment Number and Ramp Segment Length Information:

Segment	Length	Segment	Length	Segment	Length	Segment	Length
0010	0189						

Primary Route Interchange Exit Number

Secondary Route Interchange Exit Number

PennDOT Type 10 Map View:



Feedback

100 feet 25 m
© 2022 Maxar, © 2022 TomTom

© 2022 Microsoft

Last Date Modified: **Jun 21, 2022**

County: 60

RMS Interchange Information

Bureau of Maintenance & Operations
Asset Management Division

Print Form



Interchange Number: 9102

Interchange Name: US 322 & PA 427 WYE

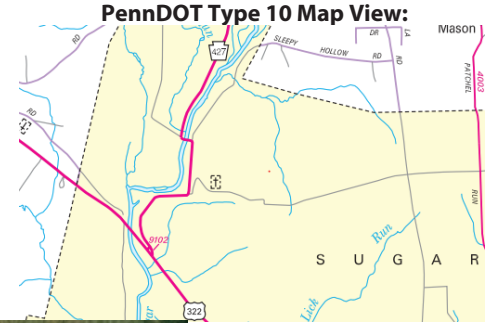
Intersecting SR's: US 322 & PA 427

Ramp Segment Number and Ramp Segment Length Information:

Segment	Length	Segment	Length	Segment	Length	Segment	Length
0010	0322						

Primary Route Interchange Exit Number

Secondary Route Interchange Exit Number



Feedback

© 2022 Maxar, © 2022 TomTom
© 2022 Microsoft

Last Date Modified: Jun 21, 2022

County: 60

RMS Interchange Information

Print Form

Bureau of Maintenance & Operations
Roadway Management Division



Interchange Number: 9103

Interchange Name: US 322 & SR 4012 WYE

Intersecting SR's: US 322 & SR 4012 Old Franklin Pk

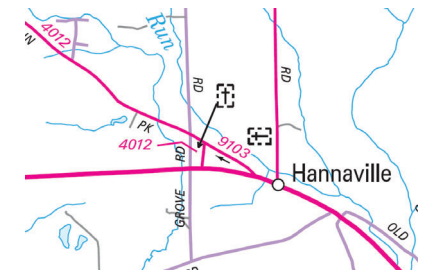
Ramp Segment Number and Ramp Segment Length Information:

Segment	Length	Segment	Length	Segment	Length	Segment	Length
0010	0392						

Primary Route
Interchange Exit
Number

Secondary Route
Interchange Exit
Number

PennDOT Type 10 Map View:



Last Date Modified:

Aug 10, 2020

County: 60

RMS Interchange Information

Print Form

Bureau of Maintenance & Operations
Asset Management Division



Interchange Number: 9105

Interchange Name: HALYDAY STREET

Intersecting SR's: PA 6 & PA 428

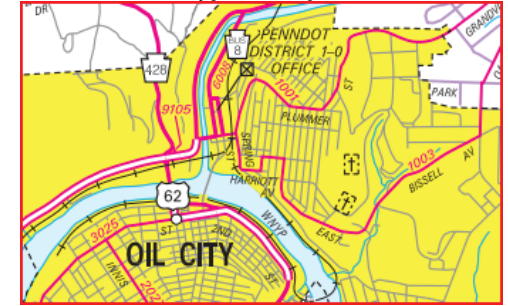
Ramp Segment Number and Ramp Segment Length Information:

Segment	Length	Segment	Length	Segment	Length	Segment	Length
0010	0249						

Primary Route
Interchange Exit
Number

Secondary Route
Interchange Exit
Number

PennDOT Type 10 Map View:



Privacy Choices Consumer Health Privacy

© 2025 Microsoft

Last Date Modified:

Jan 8, 2025

County: 60

RMS Interchange Information

Bureau of Maintenance & Operations
Asset Management Division

Print Form



Interchange Number: 9201

Interchange Name: BARKEYVILLE REST AREA EB

Intersecting SR's: I-80 Z H Confair Hw

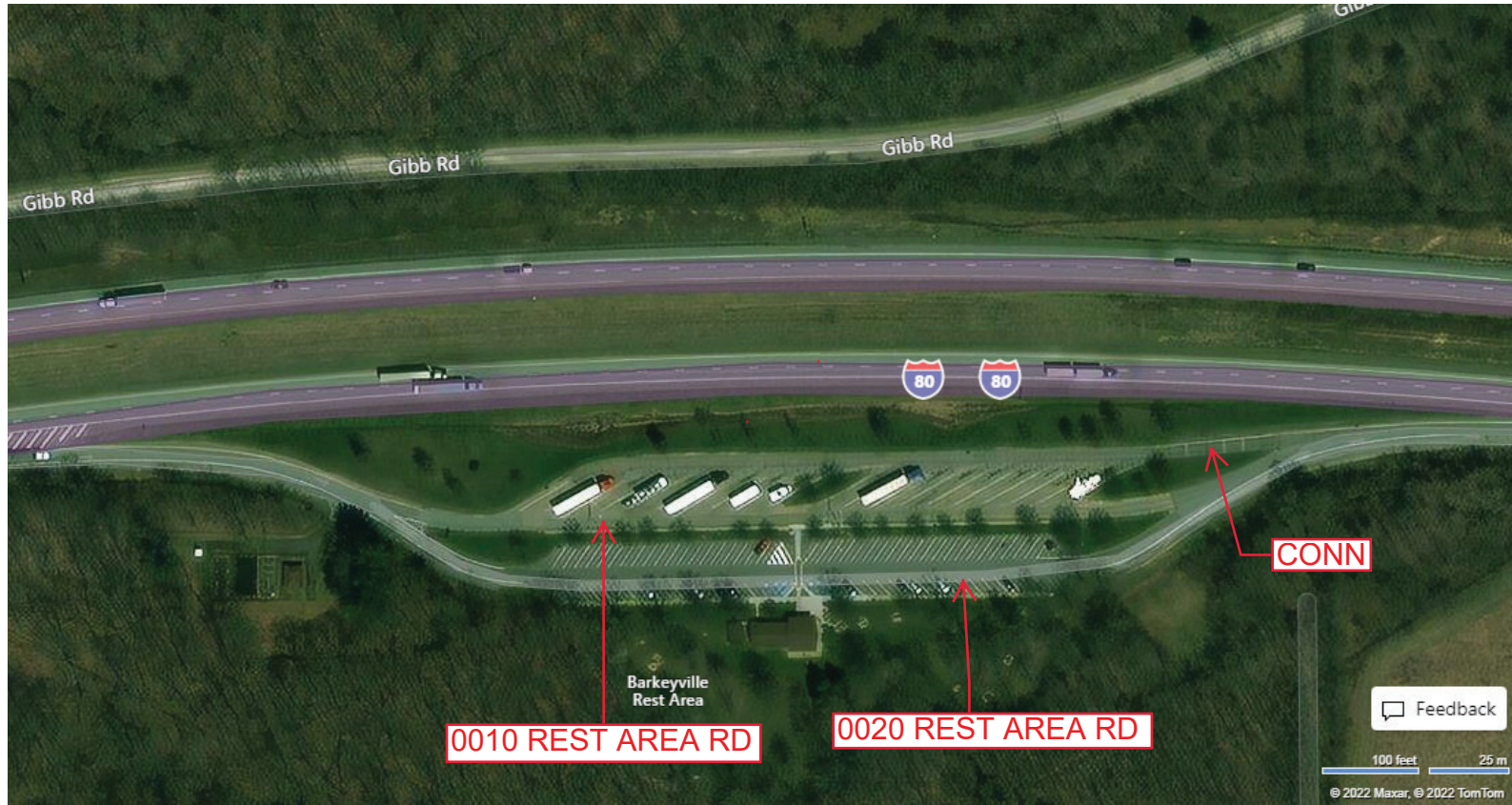
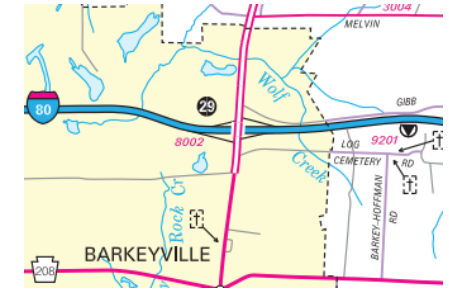
Ramp Segment Number and Ramp Segment Length Information:

Segment	Length	Segment	Length	Segment	Length	Segment	Length
0010	1654						
0020	0850						

Primary Route Interchange Exit Number

Secondary Route Interchange Exit Number

PennDOT Type 10 Map View:



Last Date Modified:

Jun 21, 2022

County: **60**

RMS Interchange Information

Bureau of Maintenance & Operations
Asset Management Division

Print Form



Interchange Number: **9202**

Interchange Name: **BARKEYVILLE REST AREA WB**

Intersecting SR's: **I-80 Z H Confair Hw**

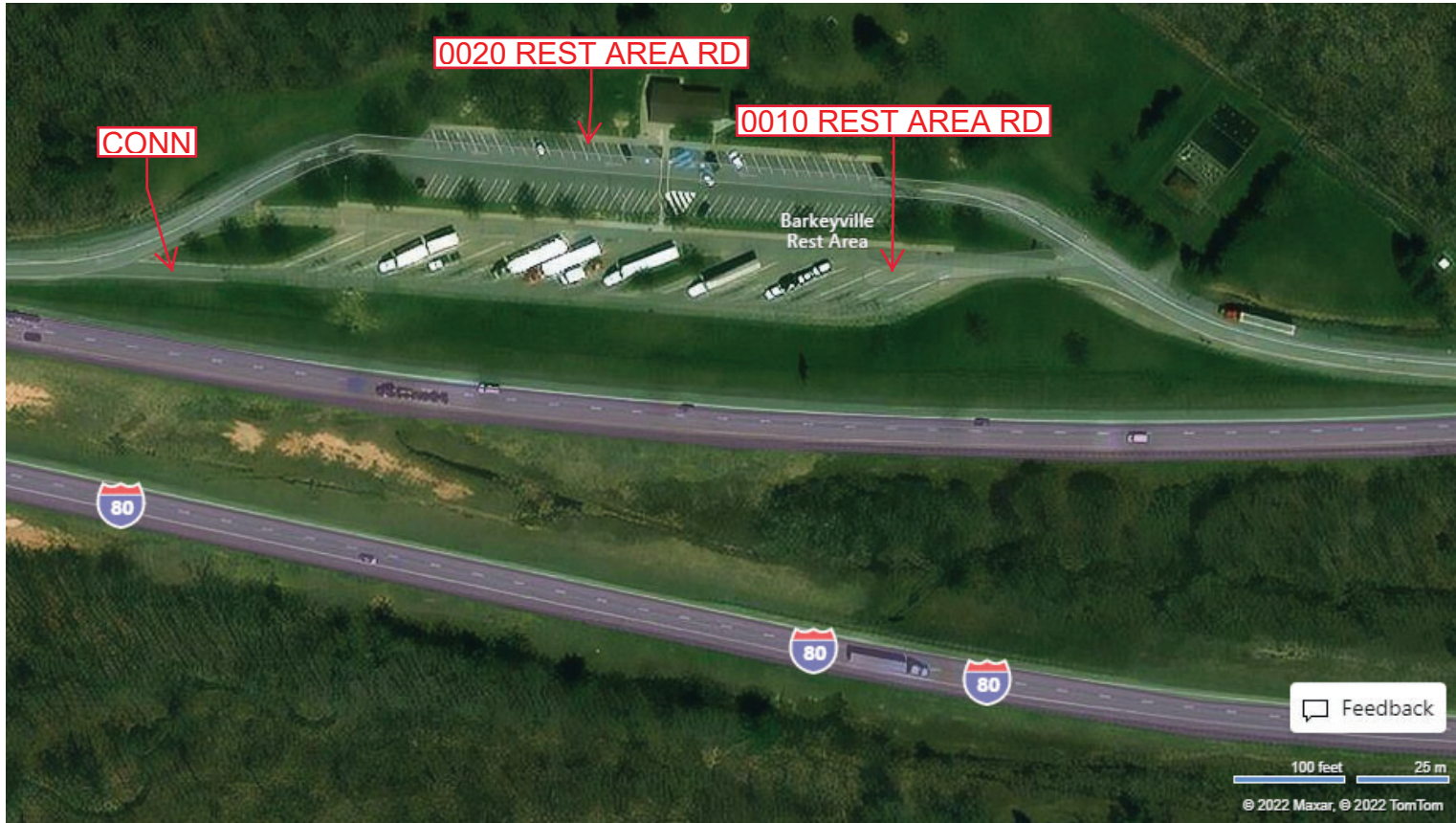
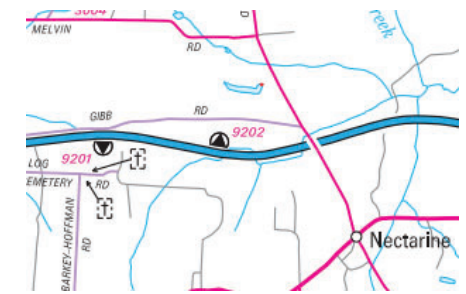
Ramp Segment Number and Ramp Segment Length Information:

Segment	Length	Segment	Length	Segment	Length	Segment	Length
0010	1565						
0020	0781						

Primary Route Interchange Exit Number

Secondary Route Interchange Exit Number

PennDOT Type 10 Map View:



Feedback

100 feet 25 m
© 2022 Maxar, © 2022 TomTom
© 2022 Microsoft

Last Date Modified: Jun 22, 2022

County: **60**

RMS Interchange Information

Bureau of Maintenance & Operations
Asset Management Division

Print Form



Interchange Number: **9301**

Interchange Name: **FRANKLIN TRK ESC RAMP**

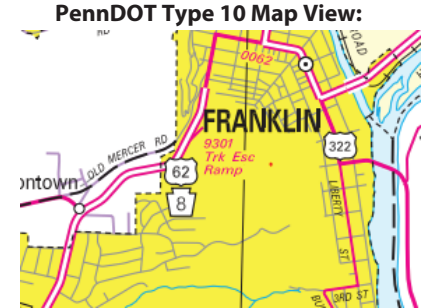
Intersecting SR's: **US 62 Fifteenth St**

Ramp Segment Number and Ramp Segment Length Information:

Segment	Length	Segment	Length	Segment	Length	Segment	Length
0010	0355						

Primary Route Interchange Exit Number

Secondary Route Interchange Exit Number



Last Date Modified: Jun 22, 2022