

County: **61**

RMS Interchange Information

Print Form

Interchange Number: **8002**

Bureau of Maintenance & Operations
Asset Management Division



Interchange Name: **YOUNGSVILLE INT**

Intersecting SR's: **US 6 & SR 3022 Main Street**

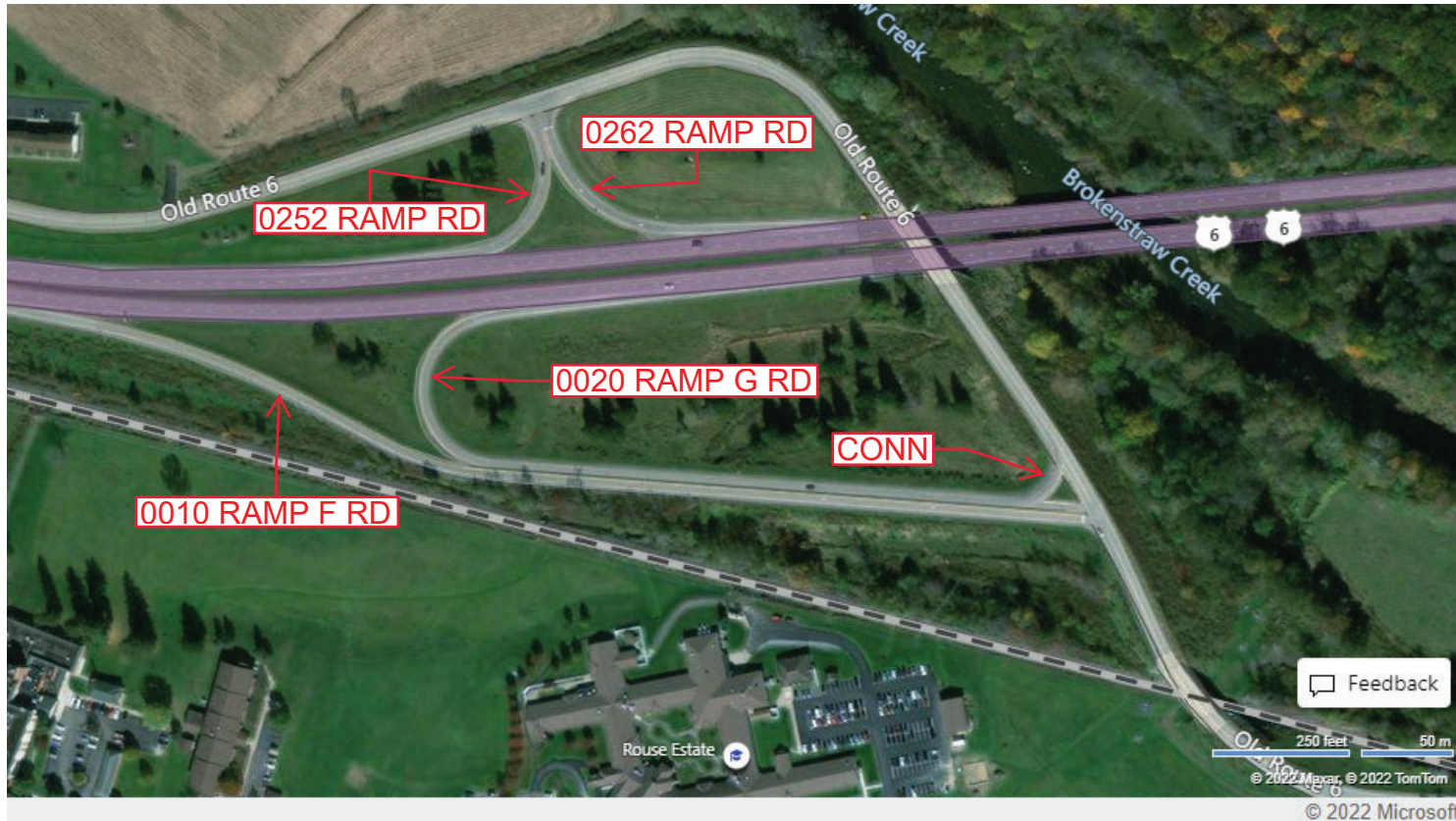
Ramp Segment Number and Ramp Segment Length Information:

Segment	Length	Segment	Length	Segment	Length	Segment	Length
0010	1950						
0020	1513						
0252	0297						
0262	0338						

Primary Route Interchange Exit Number

Secondary Route Interchange Exit Number

PennDOT Type 10 Map View:



Last Date Modified: **Jun 23, 2022**

County: 61

RMS Interchange Information

Bureau of Maintenance & Operations
Asset Management Division

Print Form



Interchange Number: 8004

Interchange Name: US 6 & PA 62

Intersecting SR's: US 6 & PA 62

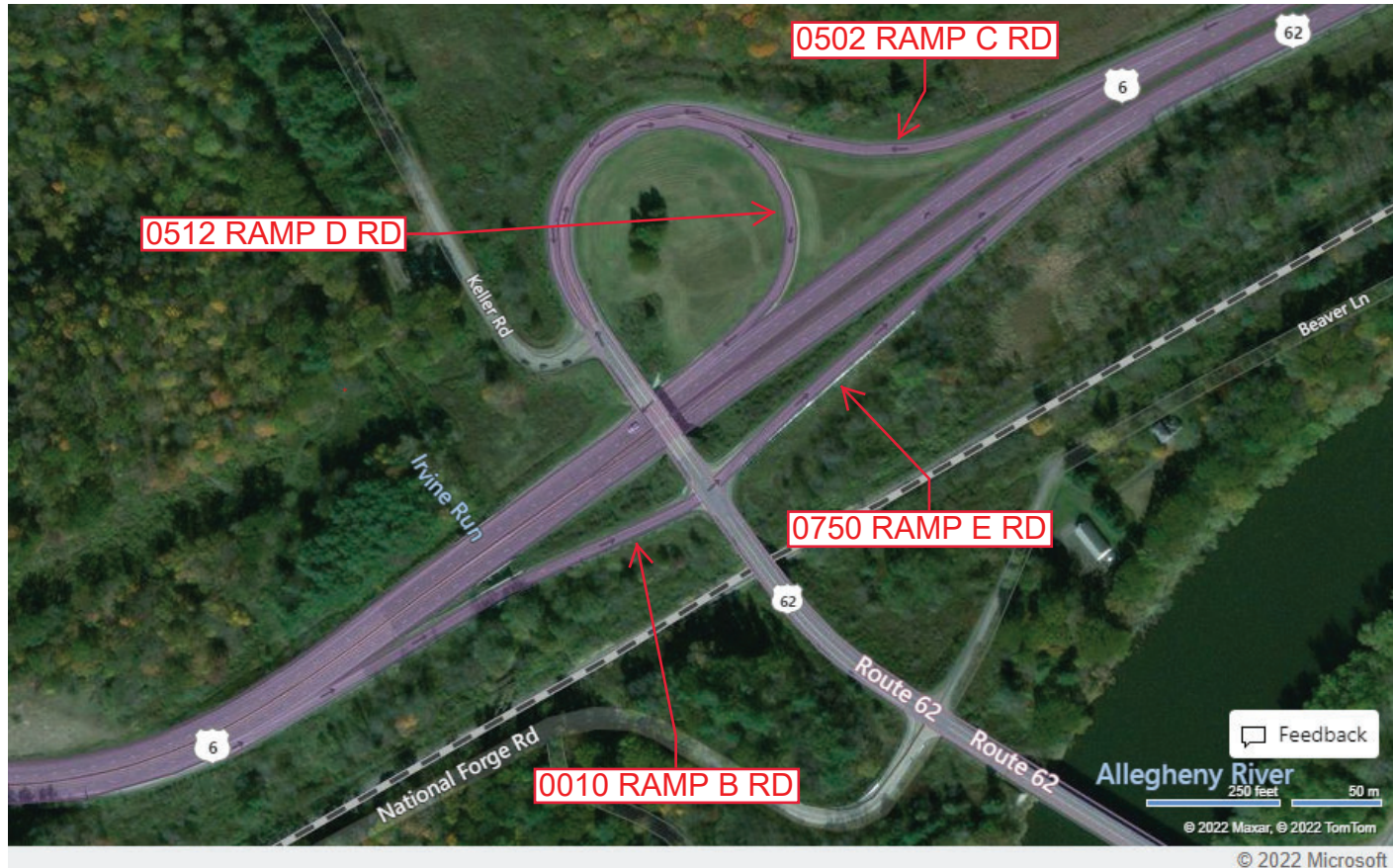
Ramp Segment Number and Ramp Segment Length Information:

Segment	Length	Segment	Length	Segment	Length	Segment	Length
0010	0750						
0502	1541						
0512	1233						
0750	0807						

Primary Route Interchange Exit Number

Secondary Route Interchange Exit Number

PennDOT Type 10 Map View:



Feedback

© 2022 Maxar, © 2022 TomTom

© 2022 Microsoft

Last Date Modified:

Jun 23, 2022

County: 61

RMS Interchange Information

Print Form

Bureau of Maintenance & Operations
Asset Management Division



Interchange Number: 8006

Interchange Name: LUDLOW STREET & US 62

Intersecting SR's: US 6 & US Ludlow St

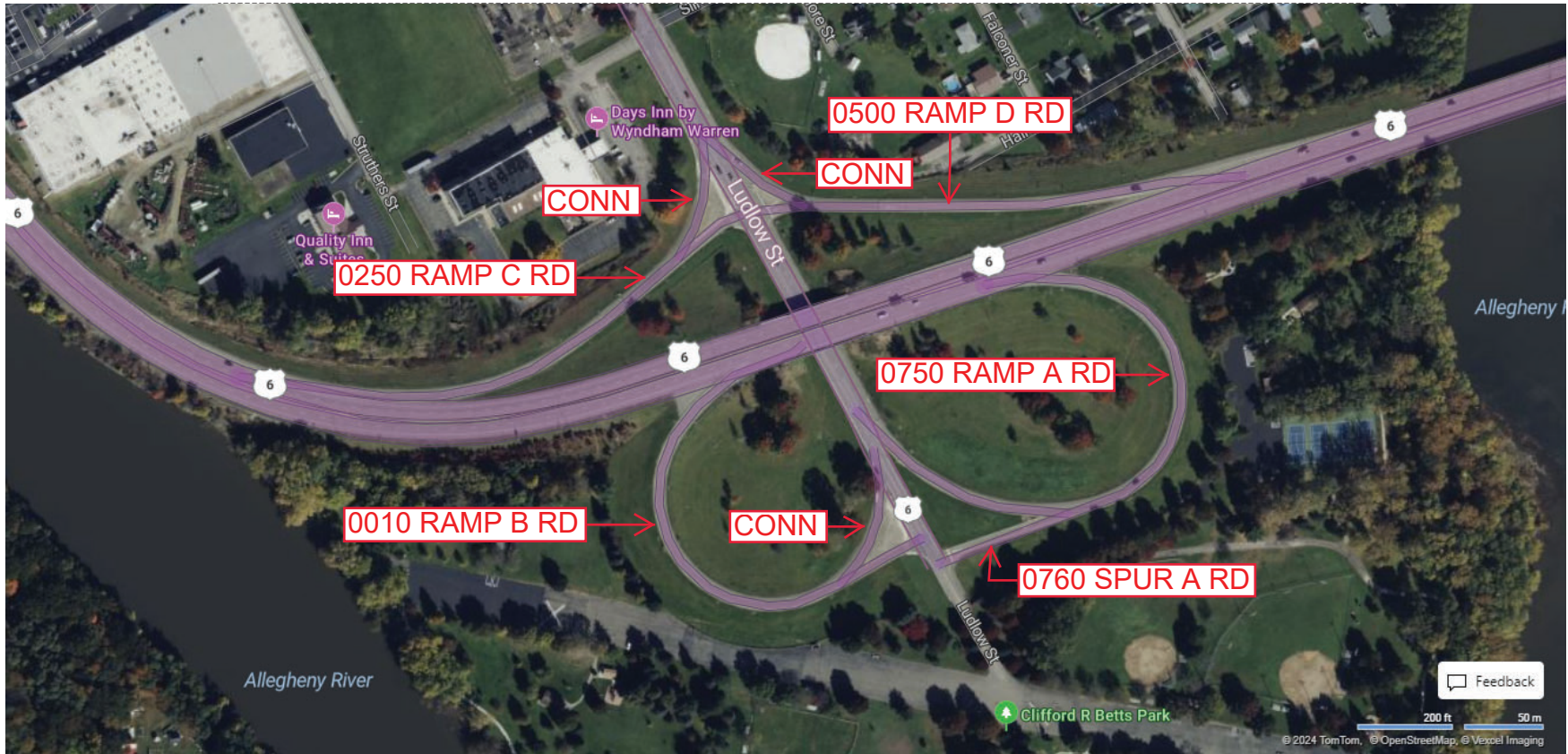
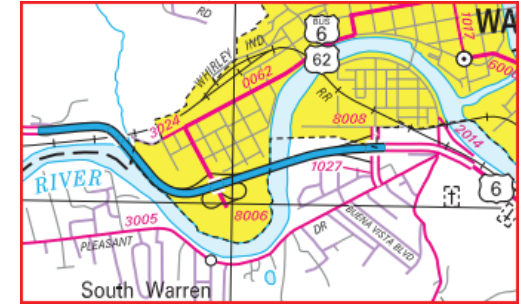
Ramp Segment Number and Ramp Segment Length Information:

Segment	Length	Segment	Length	Segment	Length	Segment	Length
0010	1011						
0250	0723						
0500	0803						
0750	1236						
0760	0218						

Primary Route
Interchange Exit
Number

Secondary Route
Interchange Exit
Number

PennDOT Type 10 Map View:



Privacy Choices Consumer Health Privacy

© 2025 Microsoft

Last Date Modified:

Jan 8, 2025

County: **61**

RMS Interchange Information

Print Form

Interchange Number: **8008**

Bureau of Maintenance & Operations
Asset Management Division



Interchange Name: **SR 1027 & US 6**

Intersecting SR's: **US 6 & SR 1027 Main St**

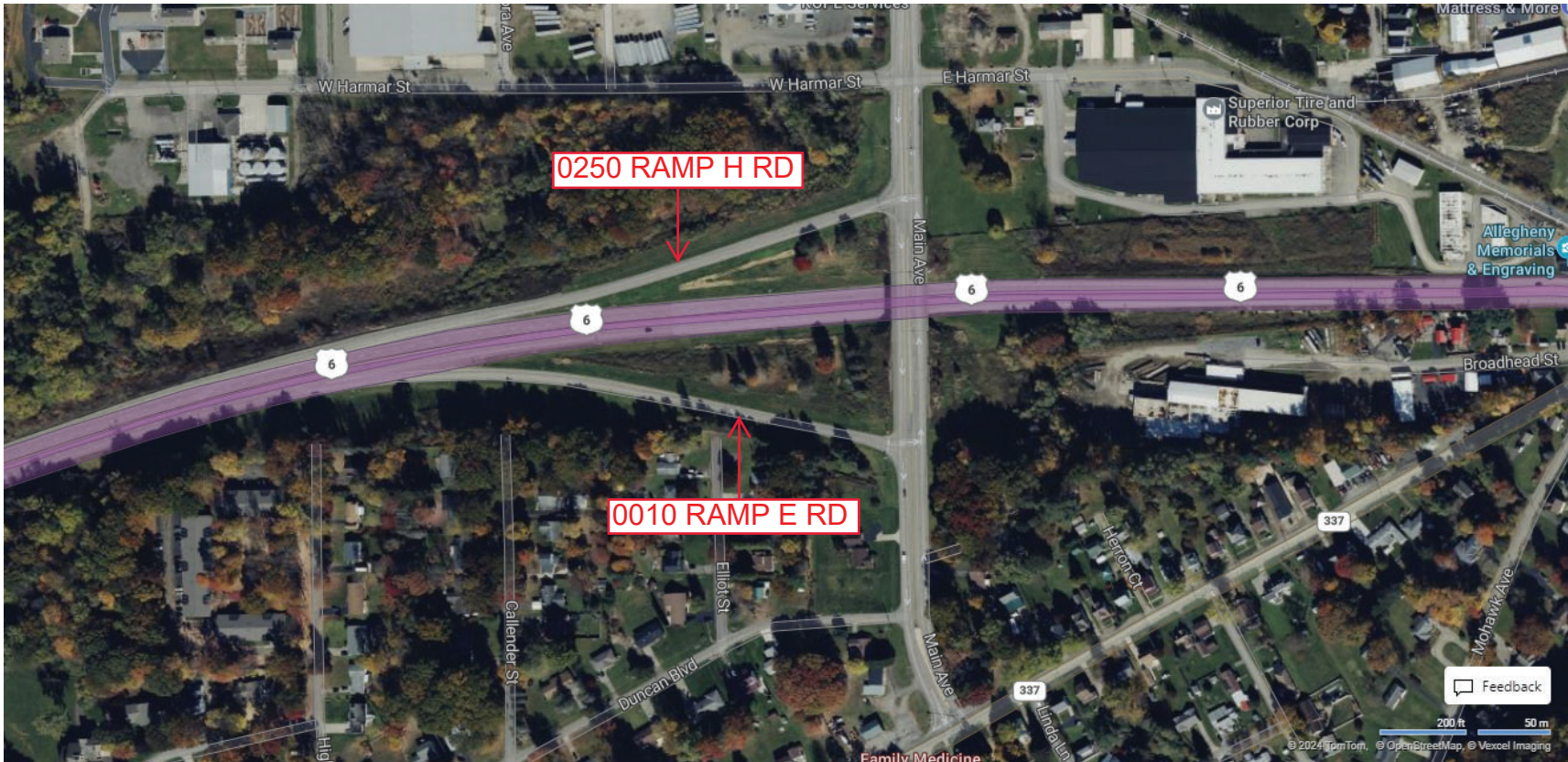
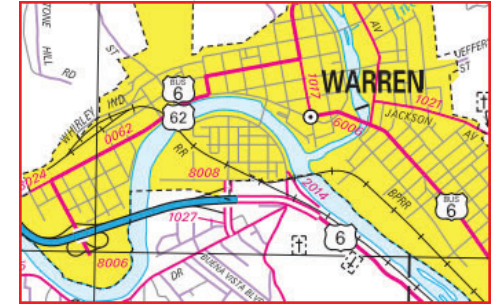
Ramp Segment Number and Ramp Segment Length Information:

Segment	Length	Segment	Length	Segment	Length	Segment	Length
0010	1067						
0250	0983						

Primary Route Interchange Exit Number

Secondary Route Interchange Exit Number

PennDOT Type 10 Map View:



Privacy Choices Consumer Health Privacy

Last Date Modified: **Jan 9, 2025**

© 2025 Microsoft