

County: 14

RMS Interchange Information

Print Form

Interchange Number: 8006

Bureau of Maintenance & Operations
Asset Management Division



Interchange Name: SNOW SHOE INT

Intersecting SR's: I-80 & SR 4005 Cherry Run Rd

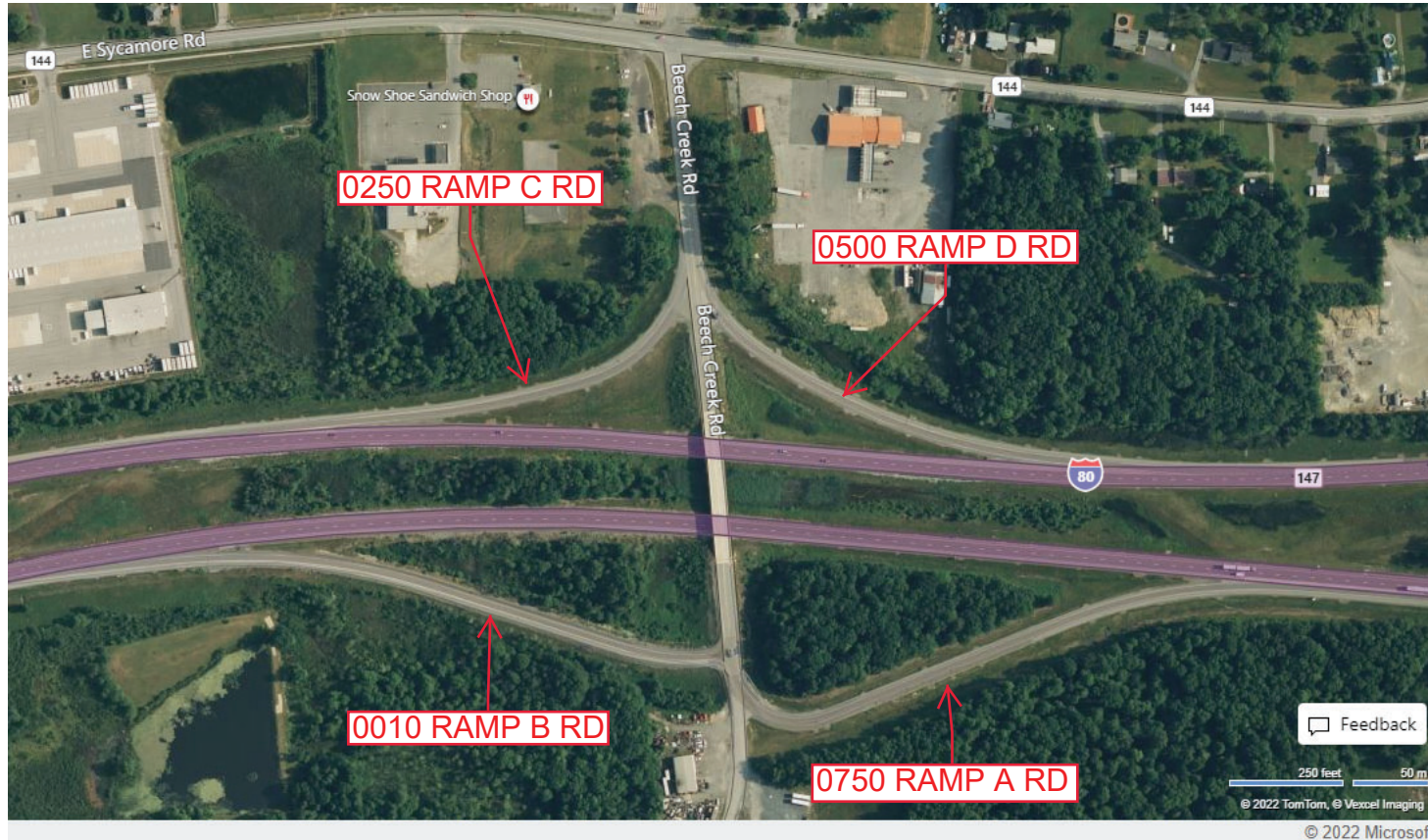
Ramp Segment Number and Ramp Segment Length Information:

Segment	Length	Segment	Length	Segment	Length	Segment	Length
0010	1215						
0250	0750						
0500	0771						
0750	1250						

Primary Route Interchange Exit Number: 147

Secondary Route Interchange Exit Number

PennDOT Type 10 Map View:



Last Date Modified:

Oct 24, 2022

County: 14

RMS Interchange Information

Print Form

Bureau of Maintenance & Operations
Asset Management Division



Interchange Number: 8008

Interchange Name: MILESBURG INT

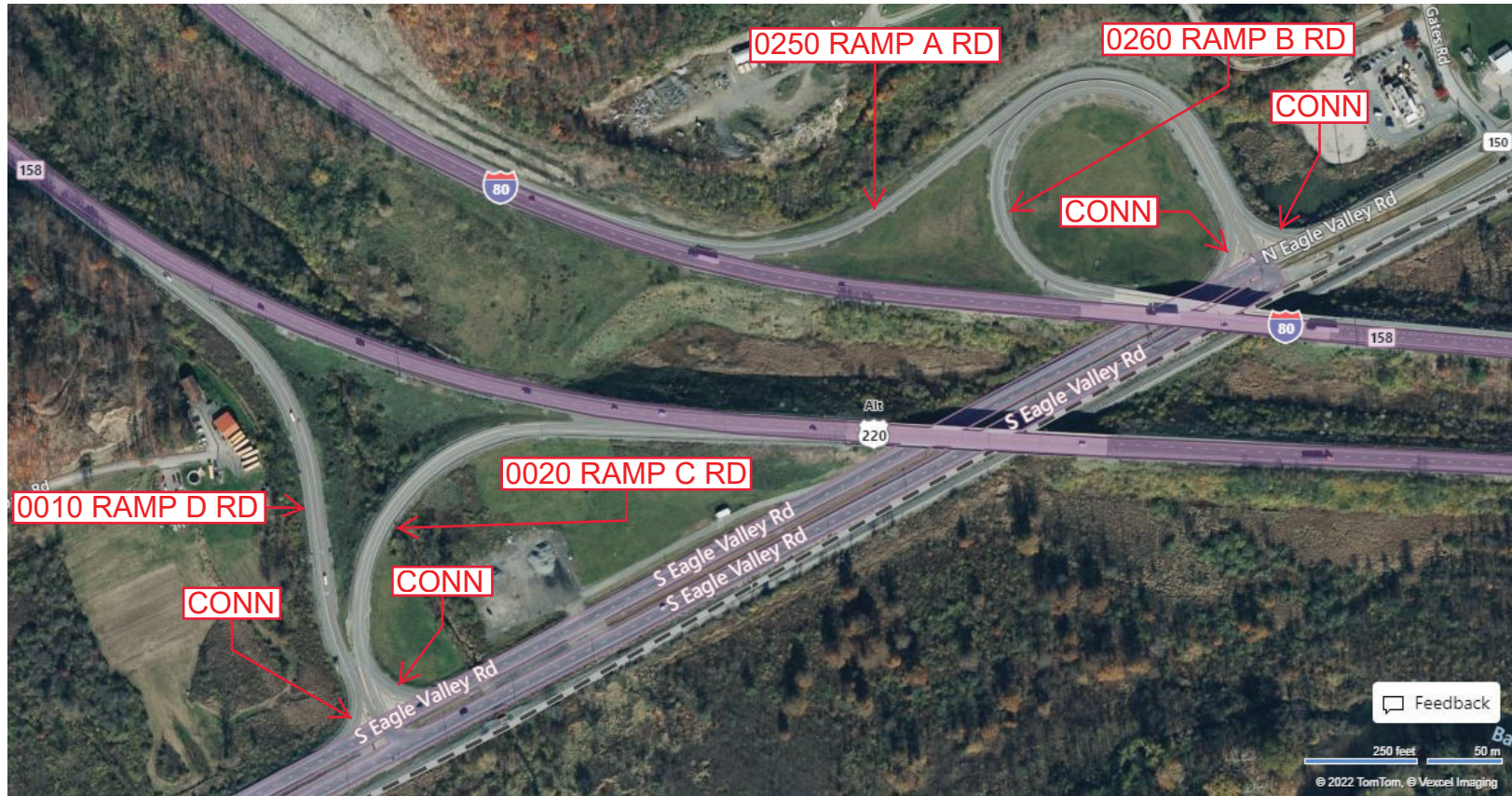
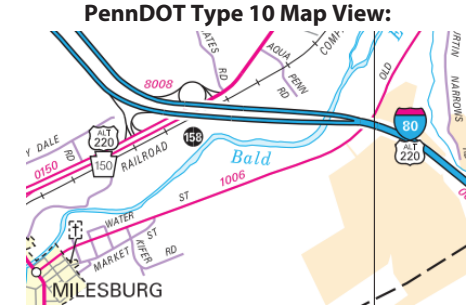
Intersecting SR's: I-80 & SR 150 Bald Eagle Valley Rd

Ramp Segment Number and Ramp Segment Length Information:

Segment	Length	Segment	Length	Segment	Length	Segment	Length
0010	1154						
0020	1054						
0250	1532						
0260	1240						

Primary Route Interchange Exit Number: 158

Secondary Route Interchange Exit Number



Last Date Modified:

Oct 28, 2022

© 2022 Microsoft

County: 14

RMS Interchange Information

Print Form

Interchange Number: 8010

Bureau of Maintenance & Operations
Asset Management Division



Interchange Name: BELLEFONTE INT

Intersecting SR's: I-80, I-99 & PA 26 Jacksonville Rd

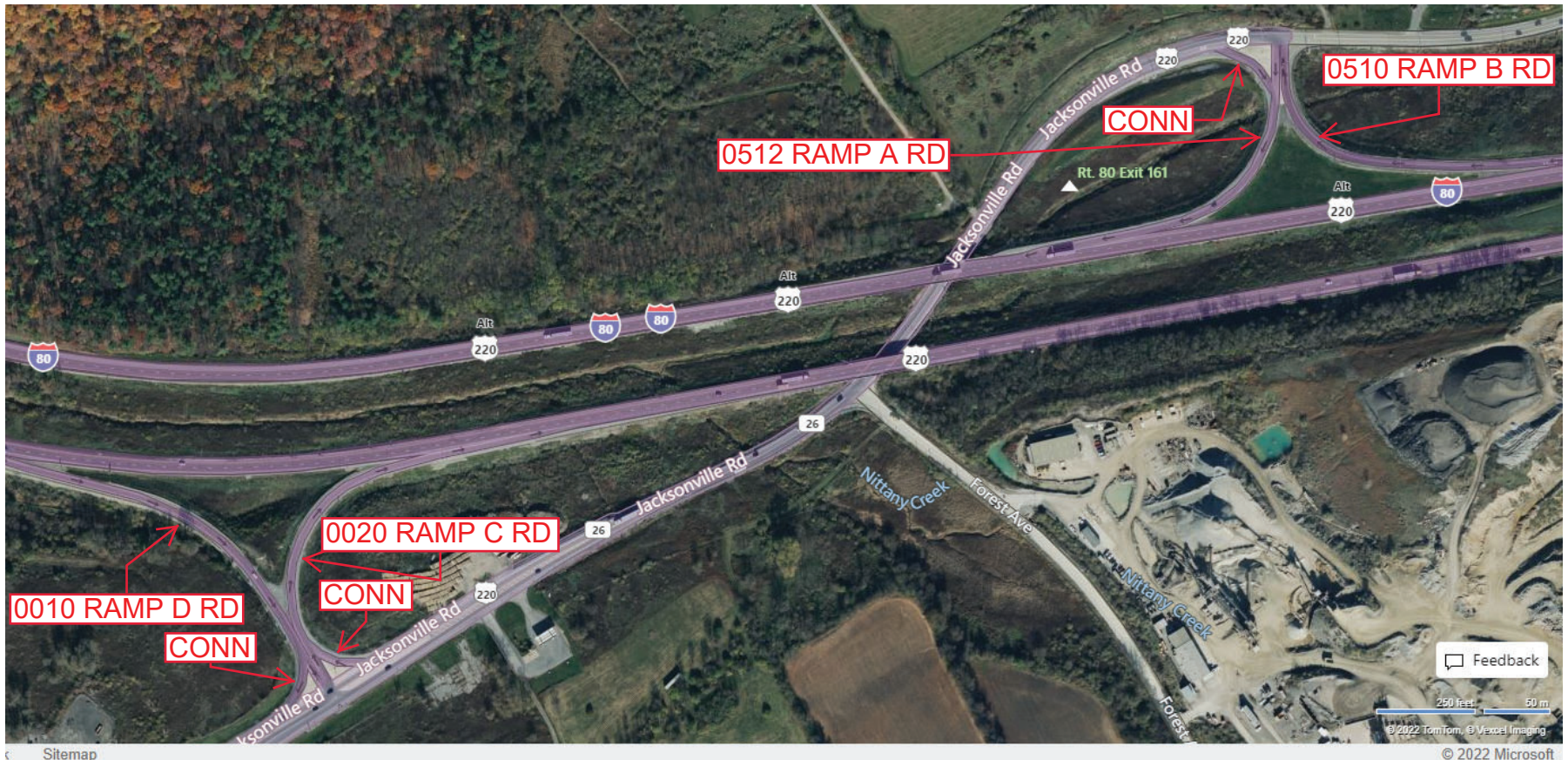
Ramp Segment Number and Ramp Segment Length Information:

Segment	Length	Segment	Length	Segment	Length	Segment	Length
0010	1026						
0020	0708						
0510	0820						
0512	0614						

Primary Route Interchange Exit Number: 161

Secondary Route Interchange Exit Number

PennDOT Type 10 Map View:



Last Date Modified:

Oct 31, 2022

County: 14

RMS Interchange Information

Print Form

Interchange Number: 8011

Bureau of Maintenance & Operations
Asset Management Division



Interchange Name: PORT MATILDA INT

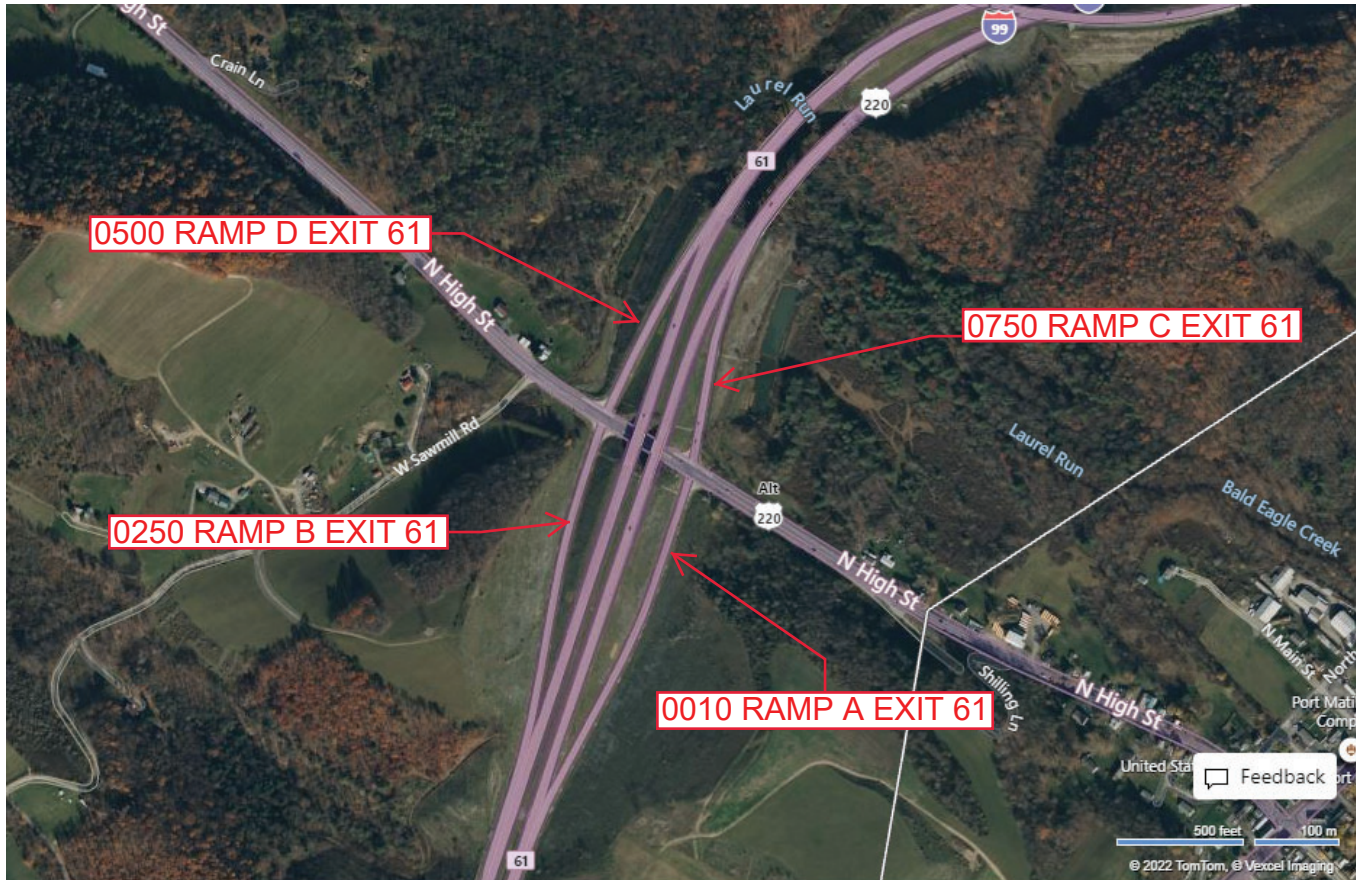
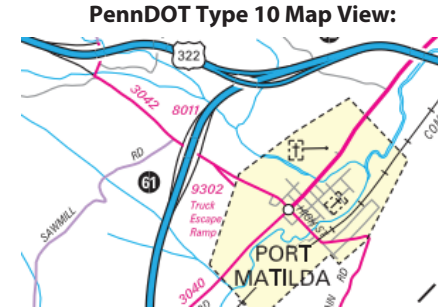
Intersecting SR's: I-99 & SR 3042 Alt 220

Ramp Segment Number and Ramp Segment Length Information:

Segment	Length	Segment	Length	Segment	Length	Segment	Length
0010	1385						
0250	1260						
0500	0783						
0750	0817						

Primary Route Interchange Exit Number: 61

Secondary Route Interchange Exit Number



© 2022 Microsoft

Last Date Modified:

Oct 31, 2022

County: 14

RMS Interchange Information

Print Form

Interchange Number: 8012

Bureau of Maintenance & Operations
Asset Management Division



Interchange Name: SKY TOP INT

Intersecting SR's: SR 3040 & SR 3042 Twenty Eight Division Hw

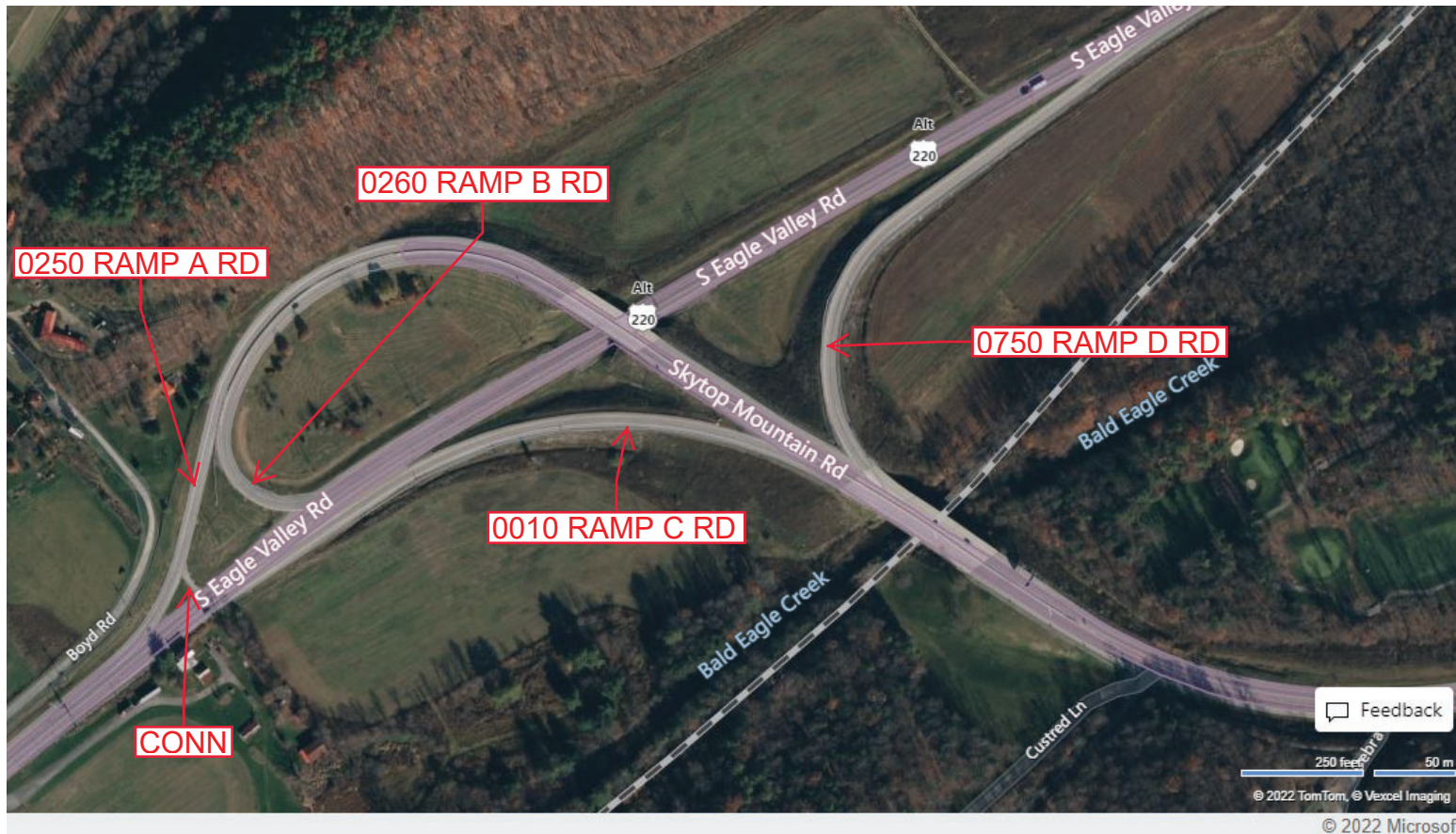
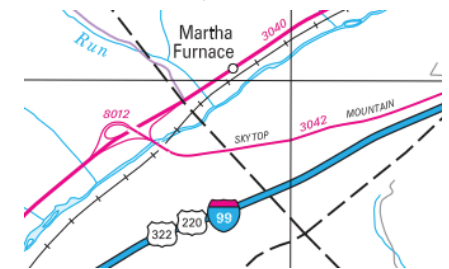
Ramp Segment Number and Ramp Segment Length Information:

Segment	Length	Segment	Length	Segment	Length	Segment	Length
0010	0775						
0250	1430						
0260	1169						
0750	1043						

Primary Route Interchange Exit Number

Secondary Route Interchange Exit Number

PennDOT Type 10 Map View:



Last Date Modified:

Oct 31, 2022

County: 14

RMS Interchange Information

Print Form

Bureau of Maintenance & Operations
Asset Management Division



Interchange Number: 8013

Interchange Name: GRAYS WOODS

Intersecting SR's: I-99, SR 3014 N Atherton St & SR 3042 Skytop Mountain Rd

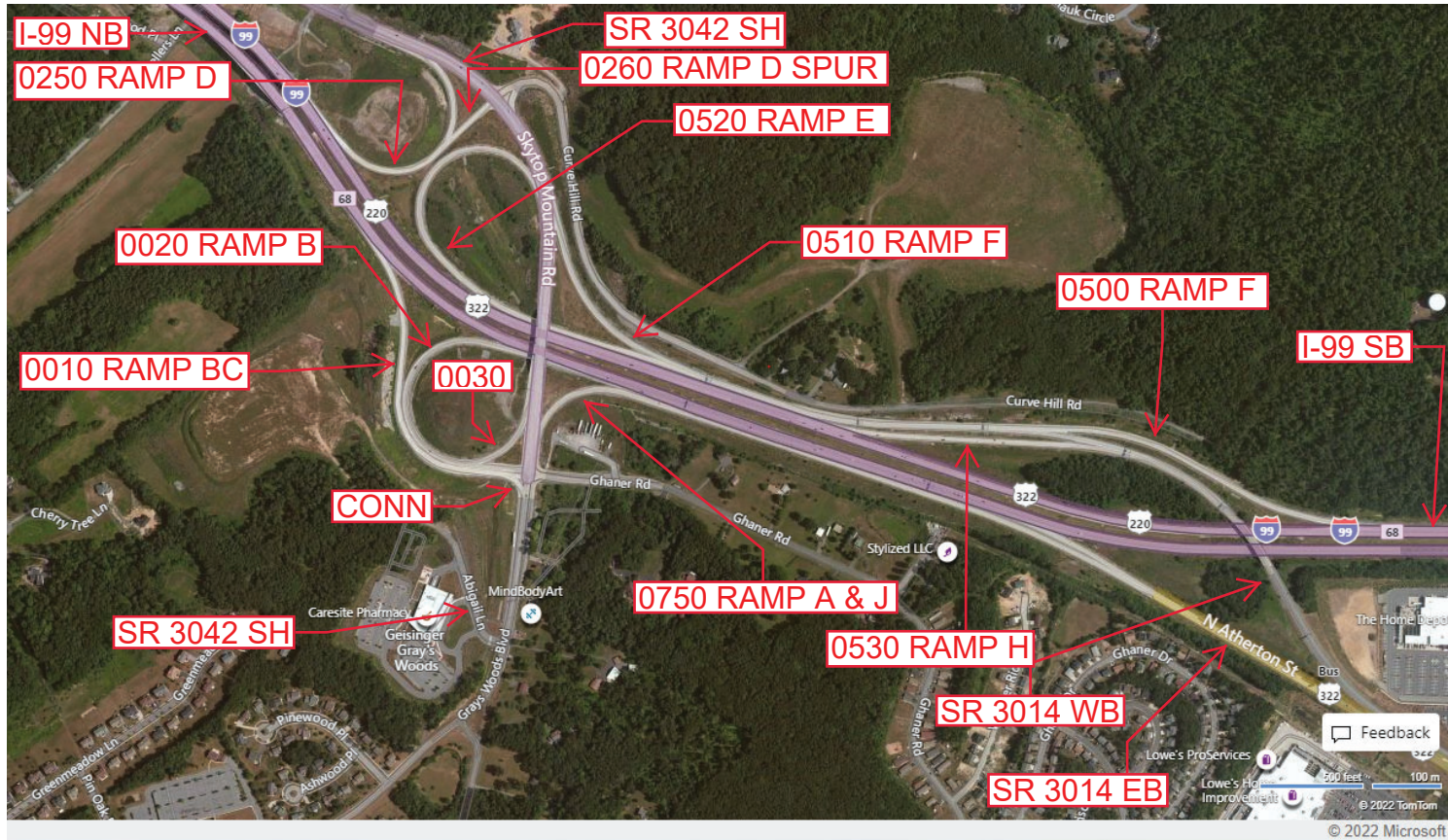
Ramp Segment Number and Ramp Segment Length Information:

Segment	Length	Segment	Length	Segment	Length	Segment	Length
0010	1479	0500	2154				
0020	1395	0510	2279				
0030	0243	0520	2185				
0250	1028	0530	1113				
0260	0230	0750	2858				

Primary Route Interchange Exit Number: 68

Secondary Route Interchange Exit Number

PennDOT Type 10 Map View:



Last Date Modified: Mar 28, 2022

County: 14

RMS Interchange Information

Print Form

Interchange Number: 8014

Bureau of Maintenance & Operations
Asset Management Division



Interchange Name: MILESBURG INT

Intersecting SR's: PA 144, PA 150 & SR 4007 Moose Run Rd

Ramp Segment Number and Ramp Segment Length Information:

Segment	Length	Segment	Length	Segment	Length	Segment	Length
0010	1139	0750	0981				
0250	1274						
0260	1344						
0270	0300						
0500	1713						

Primary Route Interchange Exit Number

Secondary Route Interchange Exit Number

PennDOT Type 10 Map View:



Feedback
© 2022 TomTom, © Vexcel Imaging
© 2022 Microsoft

Last Date Modified: Nov 1, 2022

County: 14

RMS Interchange Information

Print Form

Interchange Number: 8015

Bureau of Maintenance & Operations
Asset Management Division



Interchange Name: INNOVATION PARK N INT

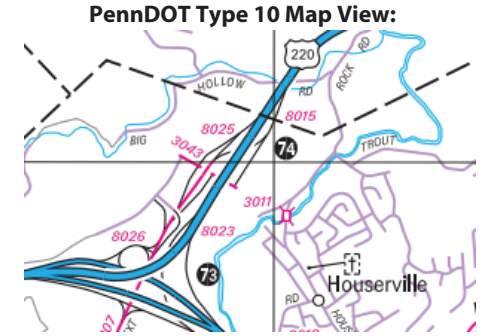
Intersecting SR's: I-99 & SR 3043, SR 3007 Park Av Et

Ramp Segment Number and Ramp Segment Length Information:

Segment	Length	Segment	Length	Segment	Length	Segment	Length
0562	0460						
0570	1481						
0582	1530						
0750	2485						

Primary Route Interchange Exit Number: 74

Secondary Route Interchange Exit Number



Feedback

500 feet 100 m

© 2022 TomTom, © Vexcel Imaging
© 2022 Microsoft

Last Date Modified: Nov 1, 2022

County: 14

RMS Interchange Information

Print Form

Interchange Number: 8017

Bureau of Maintenance & Operations
Asset Management Division



Interchange Name: DALE SUMMIT INT

Intersecting SR's: I-99 & SR 3041 Shiloh Rd

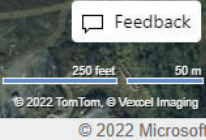
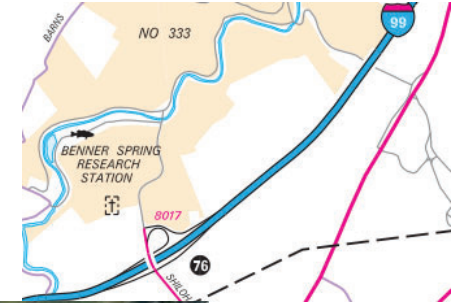
Ramp Segment Number and Ramp Segment Length Information:

Segment	Length	Segment	Length	Segment	Length	Segment	Length
0010	1366						
0500	1388						
0510	1405						
0750	1364						

Primary Route Interchange Exit Number: 76

Secondary Route Interchange Exit Number

PennDOT Type 10 Map View:



Last Date Modified:

Nov 2, 2022

County: 14

RMS Interchange Information

Print Form

Interchange Number: 8018

Bureau of Maintenance & Operations
Asset Management Division



Interchange Name: JACKSONVILLE HOWARD INT

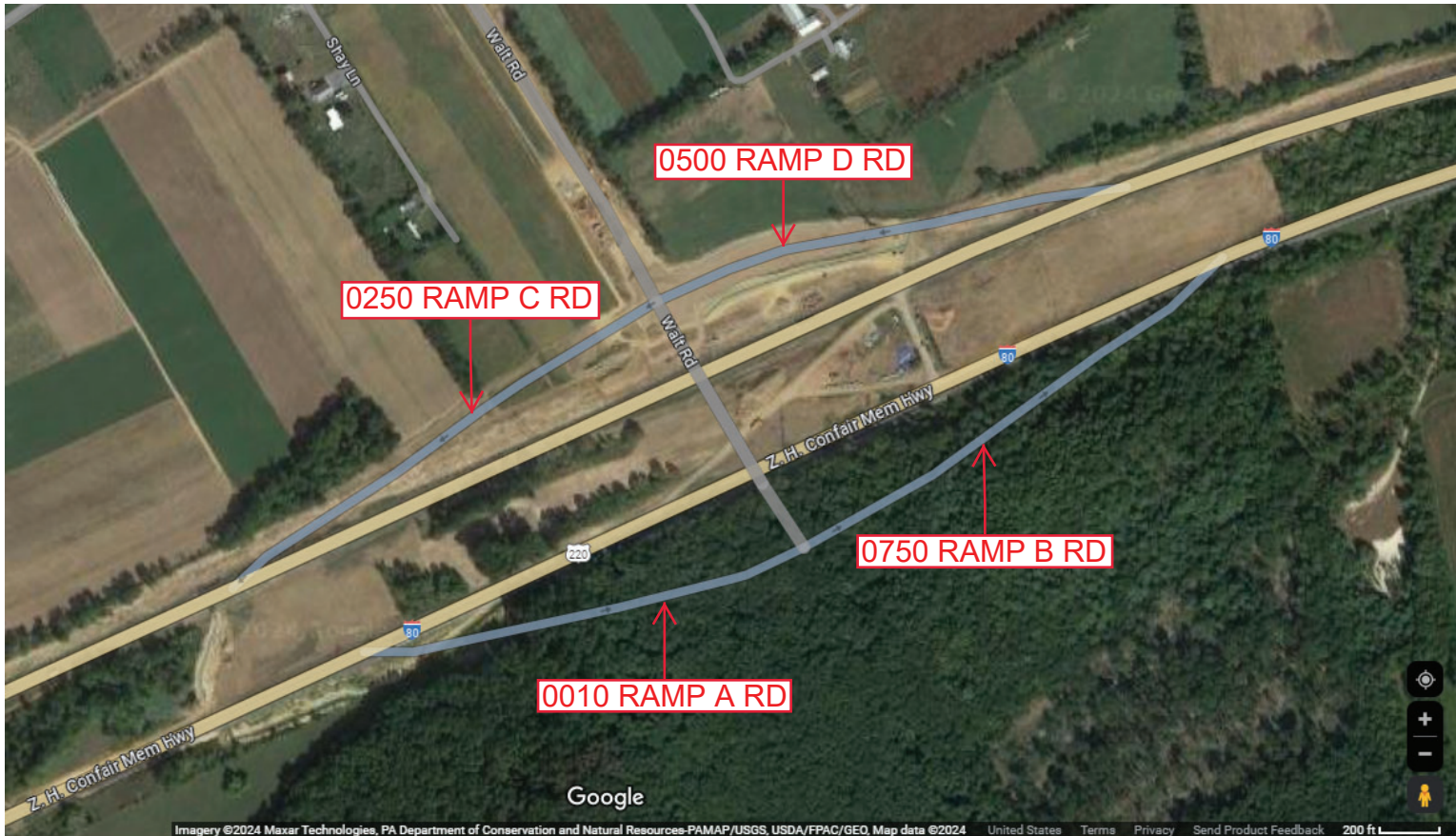
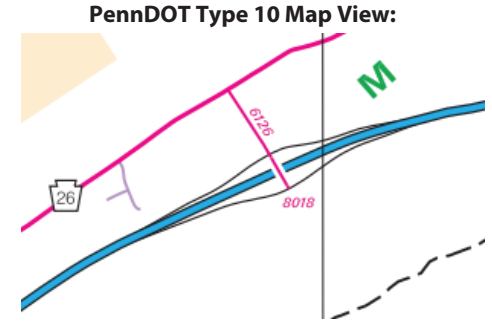
Intersecting SR's: I-80 & SR 6126 Walt Rd

Ramp Segment Number and Ramp Segment Length Information:

Segment	Length	Segment	Length	Segment	Length	Segment	Length
0010	1567						
0250	1546						
0500	1372						
0750	1721						

Primary Route Interchange Exit Number: 163

Secondary Route Interchange Exit Number



Last Date Modified: Apr 17, 2024

County: 14

RMS Interchange Information

Print Form

Interchange Number: 8019

Bureau of Maintenance & Operations
Asset Management Division



Interchange Name: BELLEFONTE INT

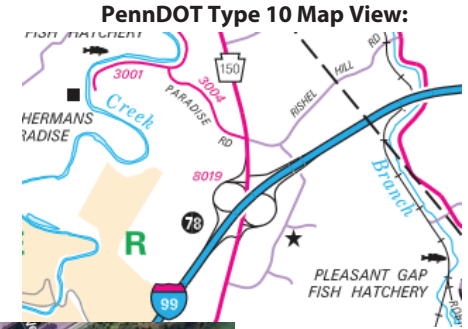
Intersecting SR's: I-99 & PA 150 Benner Pk

Ramp Segment Number and Ramp Segment Length Information:

Segment	Length	Segment	Length	Segment	Length	Segment	Length
0010	0740	0752	0483				
0250	0504	0762	2107				
0260	2141	0772	2064				
0270	2116						
0500	1052						

Primary Route Interchange Exit Number: 78A/78B

Secondary Route Interchange Exit Number



Last Date Modified:

Nov 2, 2022

County: 14

RMS Interchange Information

Print Form

Interchange Number: 8020

Bureau of Maintenance & Operations
Asset Management Division



Interchange Name: FLAT ROCK INT

Intersecting SR's: US 322, SR 3020 Reese Hollow Rd & T300 East Mountain Rd

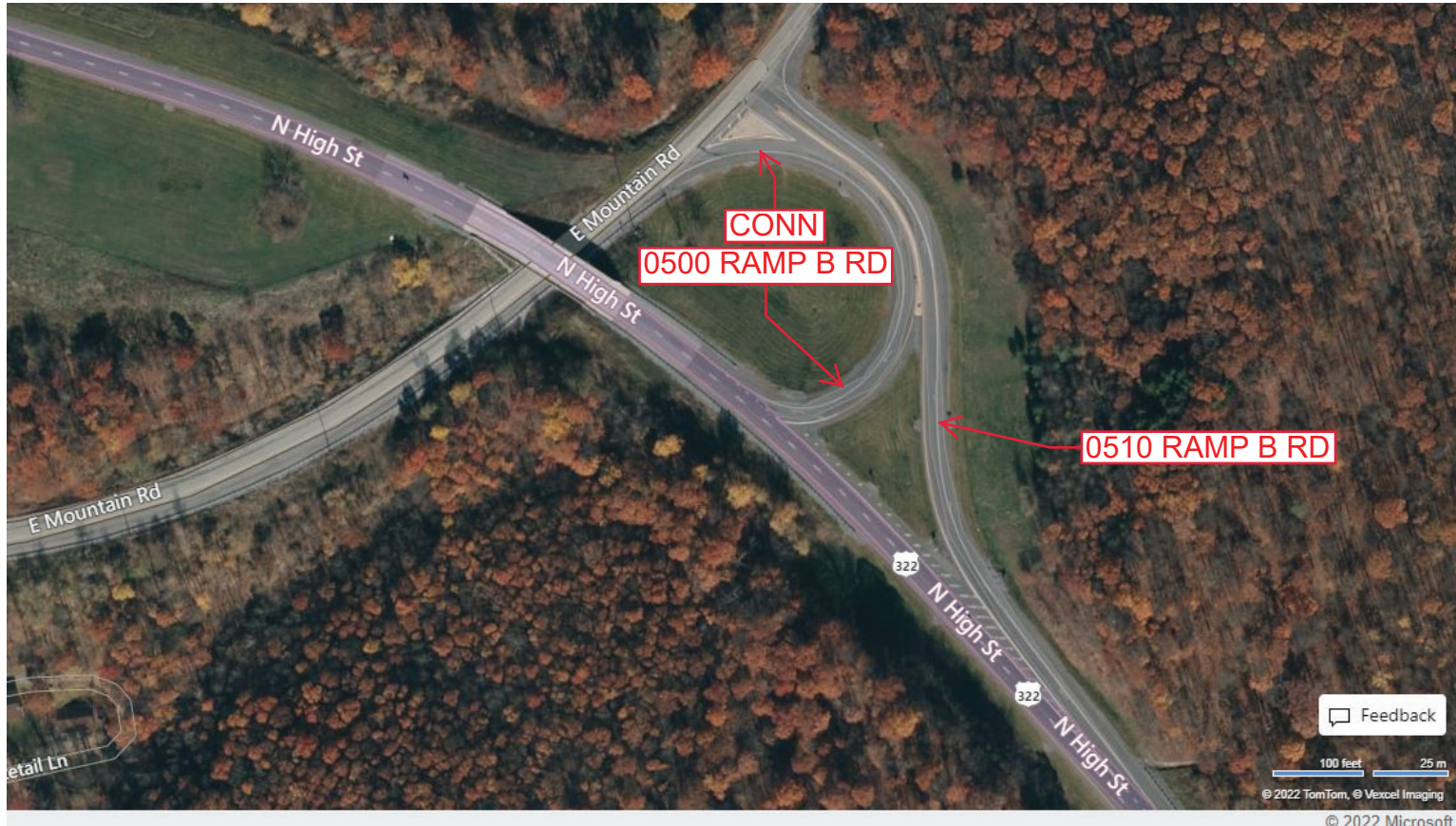
Ramp Segment Number and Ramp Segment Length Information:

Segment	Length	Segment	Length	Segment	Length	Segment	Length
0500	0507						
0510	0647						

Primary Route Interchange Exit Number

Secondary Route Interchange Exit Number

PennDOT Type 10 Map View:



Feedback

100 feet 25 m

© 2022 TomTom, © Vexcel Imaging

© 2022 Microsoft

Last Date Modified: Nov 2, 2022

County: 14

RMS Interchange Information

Bureau of Maintenance & Operations
Asset Management Division

Print Form



Interchange Number: 8021

Interchange Name: PLEASANT GAP INT

Intersecting SR's: I-99 & PA 26

Ramp Segment Number and Ramp Segment Length Information:

Segment	Length	Segment	Length	Segment	Length	Segment	Length
0020	1375						
0770	2574						

Primary Route Interchange Exit Number: 81

Secondary Route Interchange Exit Number

PennDOT Type 10 Map View:



Last Date Modified:

Nov 2, 2022

County: 14

RMS Interchange Information

Print Form

Interchange Number: 8022

Bureau of Maintenance & Operations
Asset Management Division



Interchange Name: VALLEY VISTA DRIVE INT

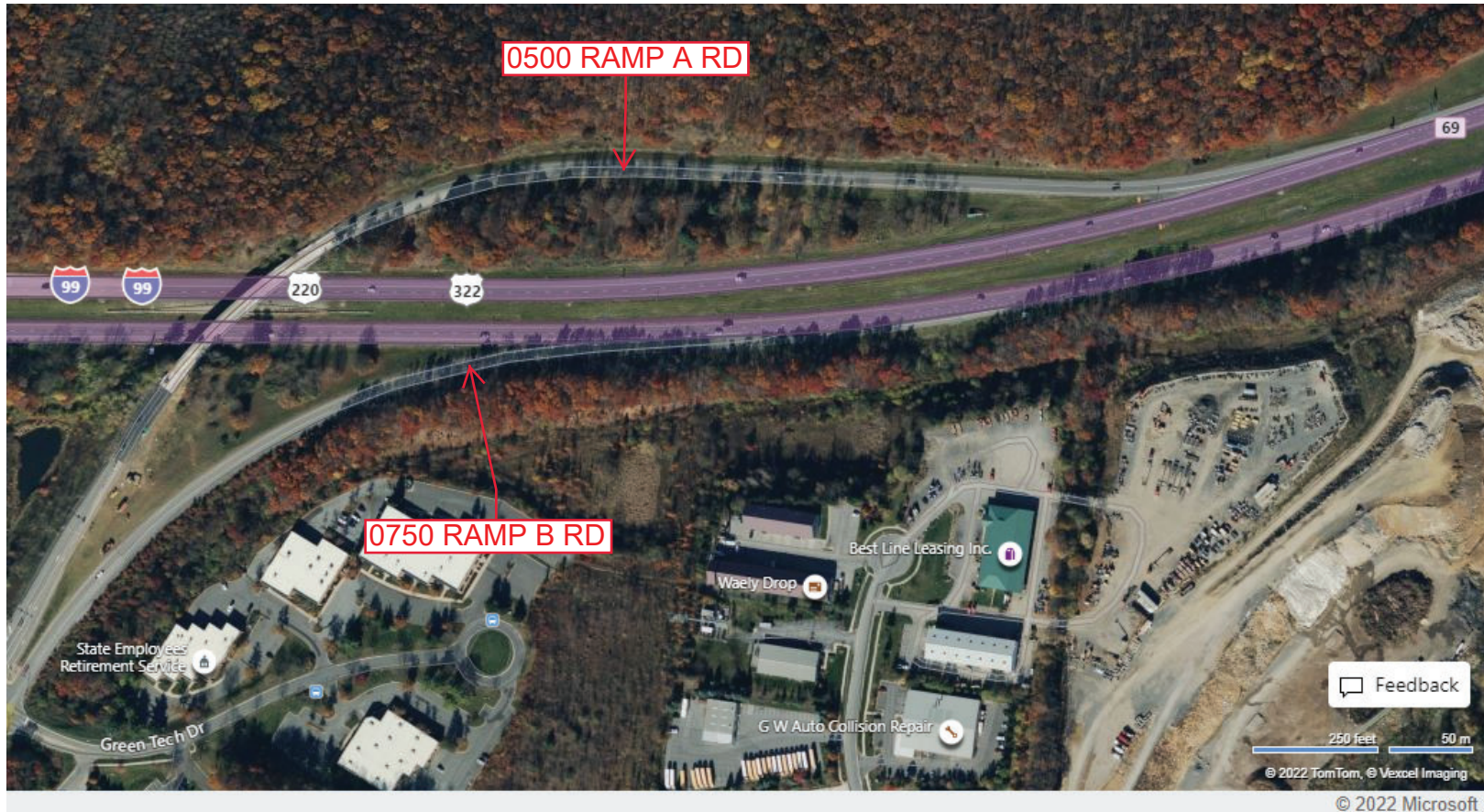
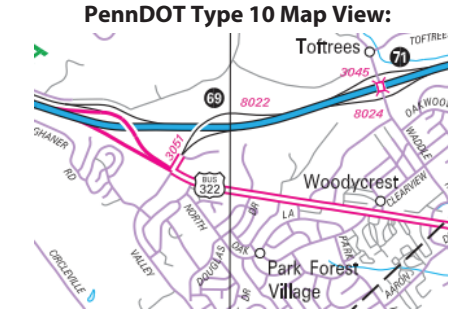
Intersecting SR's: I-99 & SR 3051 Valley Vista Dr

Ramp Segment Number and Ramp Segment Length Information:

Segment	Length	Segment	Length	Segment	Length	Segment	Length
0500	2907						
0750	1258						

Primary Route Interchange Exit Number: 69

Secondary Route Interchange Exit Number



Feedback

250 feet 50 m
© 2022 TomTom, © Voxel Imaging

© 2022 Microsoft

Last Date Modified: Nov 4, 2022

County: 14

RMS Interchange Information

Print Form

Interchange Number: 8023

Bureau of Maintenance & Operations
Asset Management Division



Interchange Name: INNOVATION PARK S INT

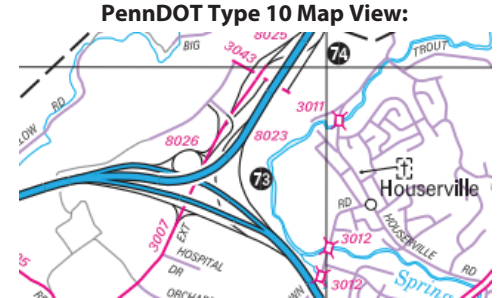
Intersecting SR's: SR 3007 Park Av Et & T644 Research Park Rd

Ramp Segment Number and Ramp Segment Length Information:

Segment	Length	Segment	Length	Segment	Length	Segment	Length
0010	1348						
0250	0450						

Primary Route Interchange Exit Number

Secondary Route Interchange Exit Number



Last Date Modified: Nov 4, 2022

County: 14

RMS Interchange Information

Print Form

Interchange Number: 8024

Bureau of Maintenance & Operations
Asset Management Division



Interchange Name: TOFTREES INT

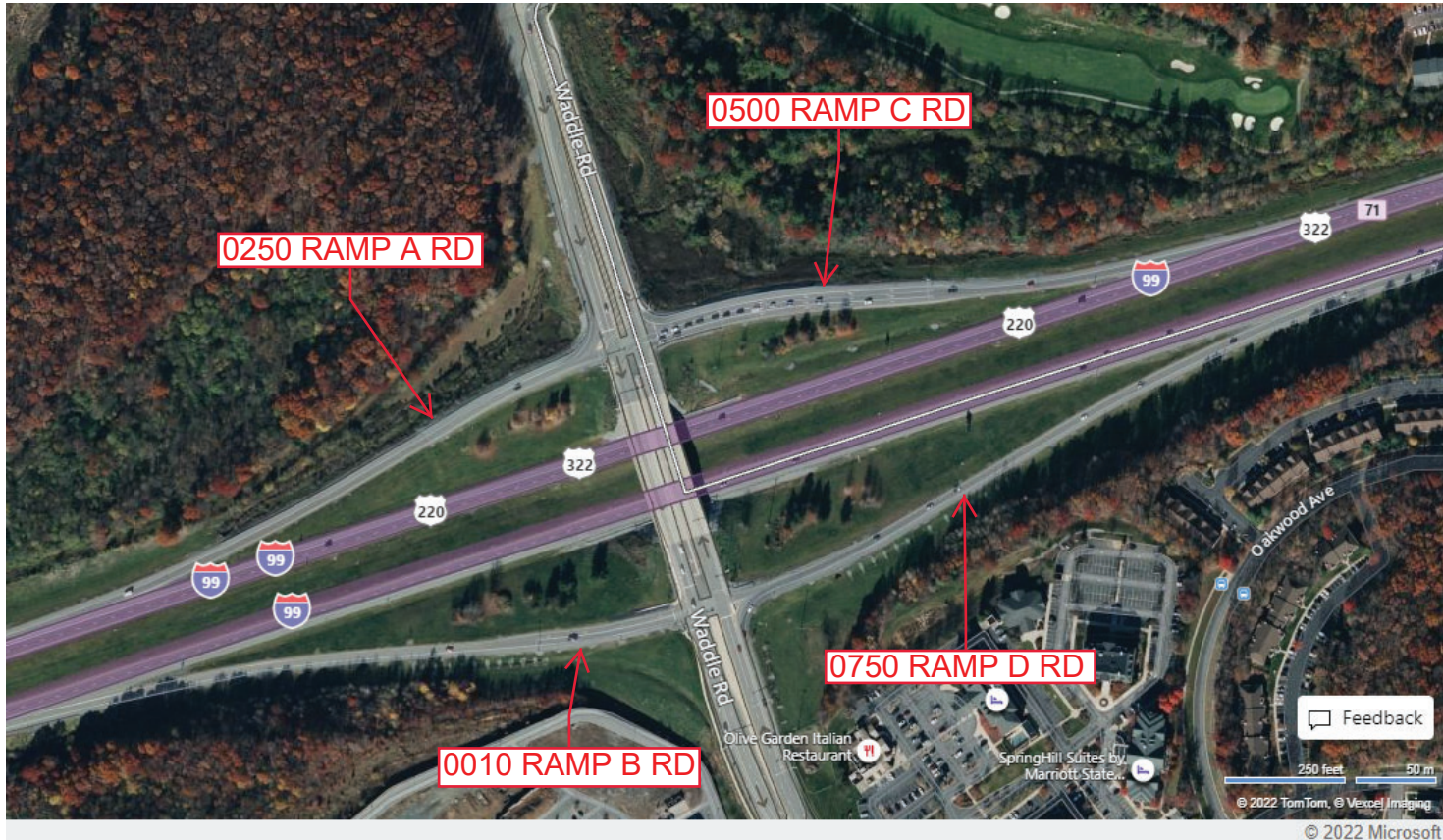
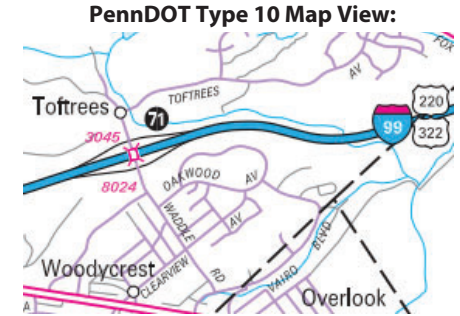
Intersecting SR's: I-99 & T528 Waddle Rd

Ramp Segment Number and Ramp Segment Length Information:

Segment	Length	Segment	Length	Segment	Length	Segment	Length
0010	1225						
0250	1085						
0500	1026						
0750	1255						

Primary Route Interchange Exit Number: 71

Secondary Route Interchange Exit Number



Last Date Modified: Nov 4, 2022

County: 14

RMS Interchange Information

Bureau of Maintenance & Operations
Asset Management Division

Print Form



Interchange Number: 8025

Interchange Name: INNOVATION PARK N INT

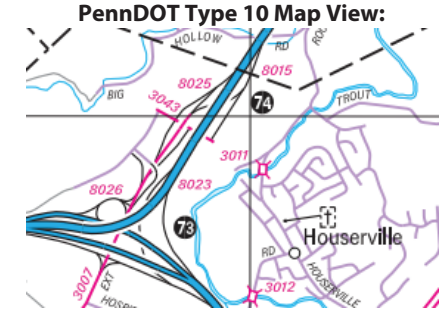
Intersecting SR's: SR 3007 Park Av & SR 3043 Innovation Park Rd

Ramp Segment Number and Ramp Segment Length Information:

Segment	Length	Segment	Length	Segment	Length	Segment	Length
0010	1135						
0250	0750						

Primary Route
Interchange Exit
Number

Secondary Route
Interchange Exit
Number



Feedback

250 feet 50 m

© 2022 TomTom, © Verbel Imaging
© 2022 Microsoft

Last Date Modified:

Nov 4, 2022

County: 14

RMS Interchange Information

Print Form

Interchange Number: 8026

Bureau of Maintenance & Operations
Asset Management Division



Interchange Name: PARK AVENUE INT

Intersecting SR's: I-99, US 322 & SR 3007 Park Av Et

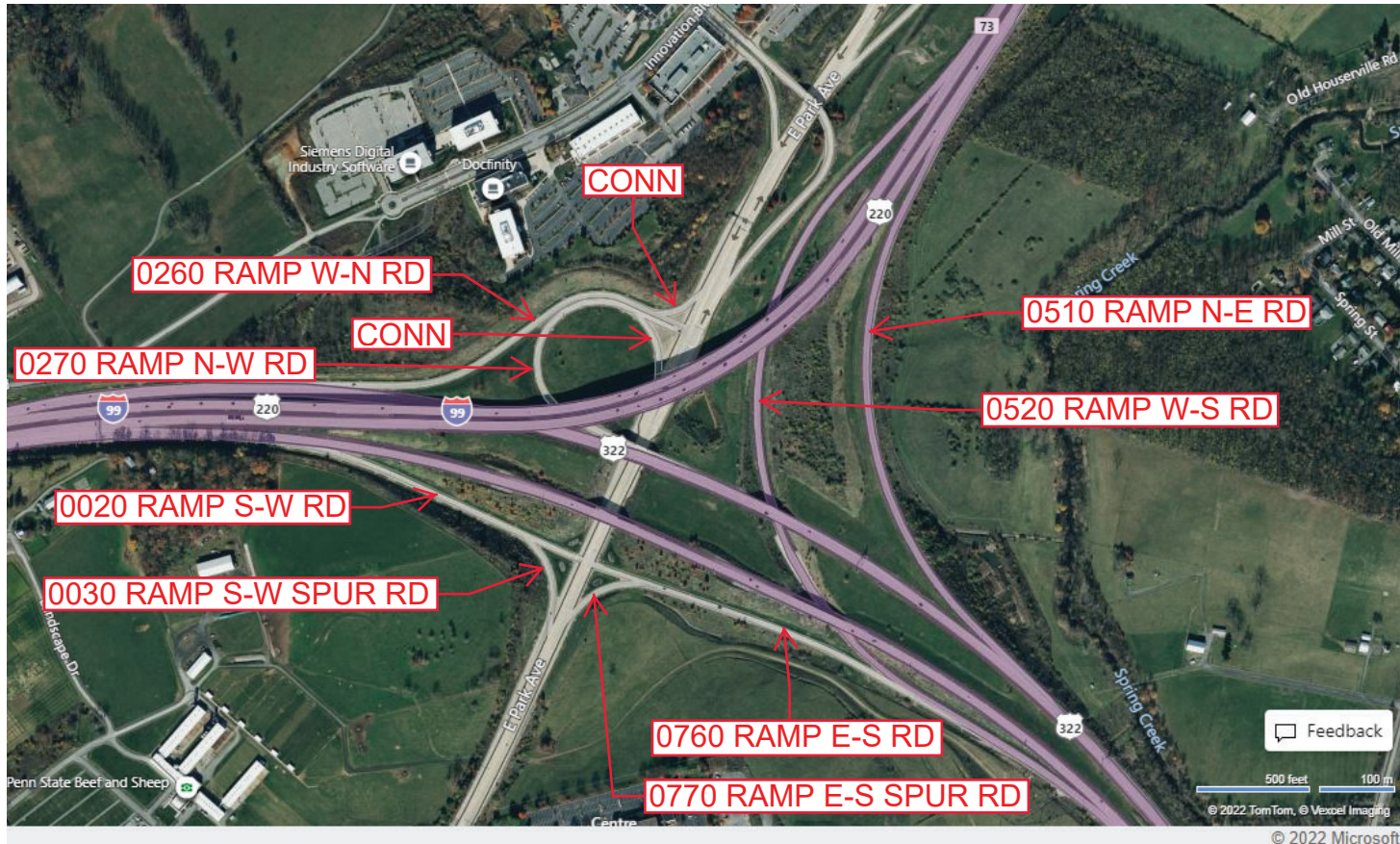
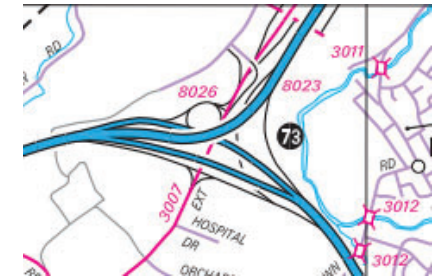
Ramp Segment Number and Ramp Segment Length Information:

Segment	Length	Segment	Length	Segment	Length	Segment	Length
0020	1204	0520	3075				
0030	0232	0760	2529				
0260	1630	0770	0182				
0270	1402						
0510	2516						

Primary Route Interchange Exit Number: 73

Secondary Route Interchange Exit Number

PennDOT Type 10 Map View:



Last Date Modified:

Nov 7, 2022

County: 14

RMS Interchange Information

Print Form

Bureau of Maintenance & Operations
Asset Management Division



Interchange Number: 8027

Interchange Name: PLEASANT GAP INT

Intersecting SR's: I-99 & T941 Harrison Rd

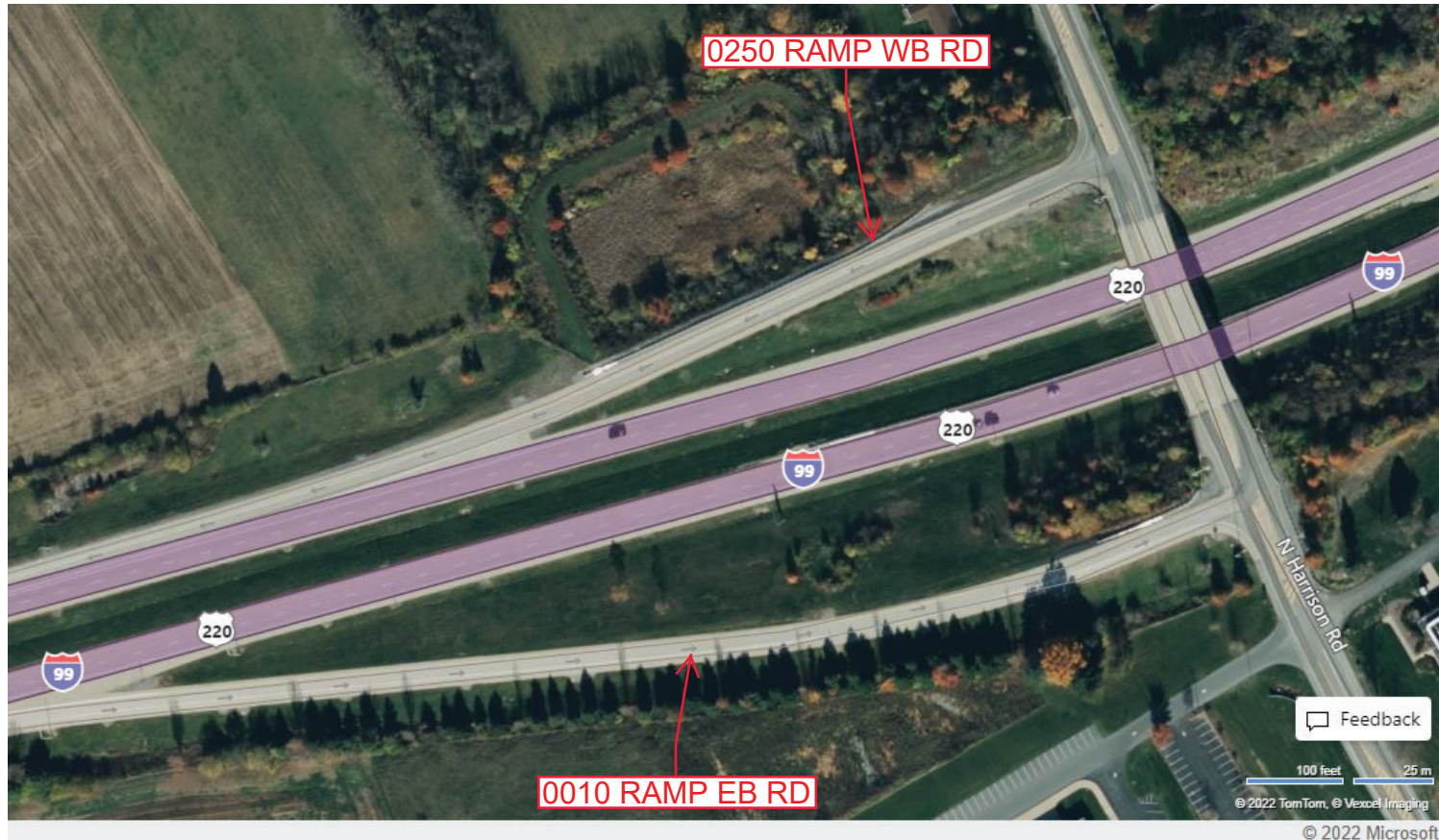
Ramp Segment Number and Ramp Segment Length Information:

Segment	Length	Segment	Length	Segment	Length	Segment	Length
0010	1245						
0250	0671						

Primary Route Interchange Exit Number: 80

Secondary Route Interchange Exit Number

PennDOT Type 10 Map View:



Last Date Modified: Nov 8, 2022

County: 14

RMS Interchange Information

Print Form

Interchange Number: 8028

Bureau of Maintenance & Operations
Asset Management Division



Interchange Name: BENNER PIKE INT

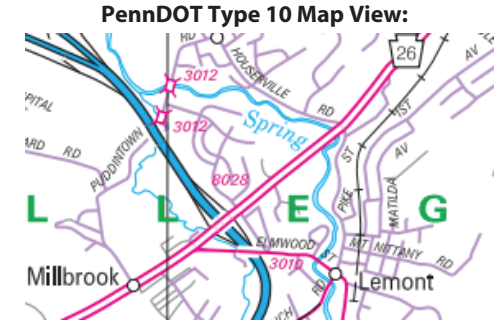
Intersecting SR's: US 322 & PA College Av

Ramp Segment Number and Ramp Segment Length Information:

Segment	Length	Segment	Length	Segment	Length	Segment	Length
0010	1085						
0250	1454						
0500	0783						
0750	0674						

Primary Route Interchange Exit Number

Secondary Route Interchange Exit Number



Last Date Modified: Nov 8, 2022

County: 14

RMS Interchange Information

Print Form

Interchange Number: 8030

Bureau of Maintenance & Operations
Asset Management Division



Interchange Name: OAK HALL INT

Intersecting SR's: US 322 & SR 3010 Boalsburg Rd

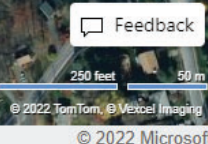
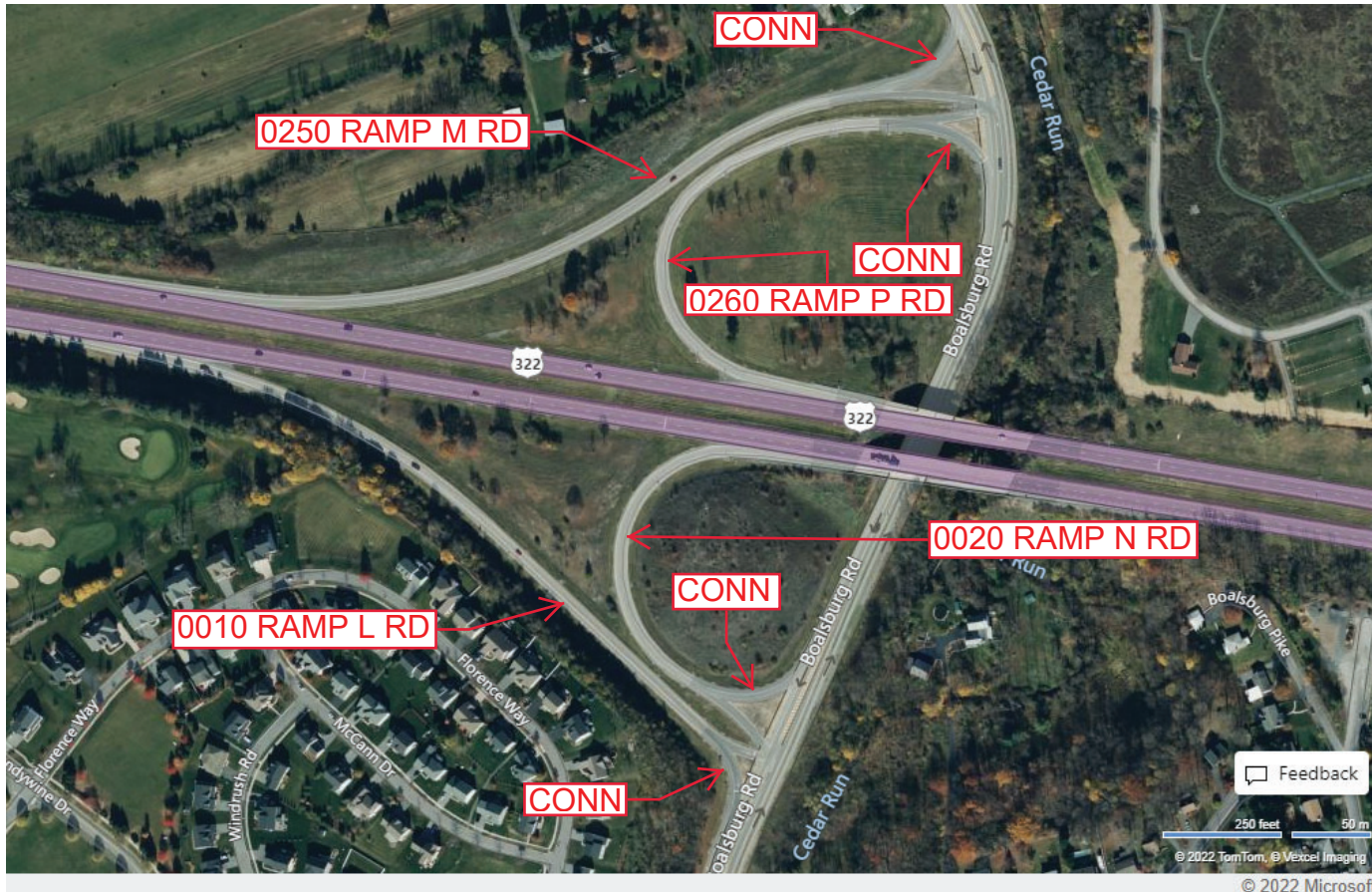
Ramp Segment Number and Ramp Segment Length Information:

Segment	Length	Segment	Length	Segment	Length	Segment	Length
0010	1482						
0020	0903						
0250	1679						
0260	1170						

Primary Route Interchange Exit Number

Secondary Route Interchange Exit Number

PennDOT Type 10 Map View:



Last Date Modified: Nov 8, 2022

County: 14

RMS Interchange Information

Print Form

Interchange Number: 8032

Bureau of Maintenance & Operations
Asset Management Division



Interchange Name: BOALSBURG INT

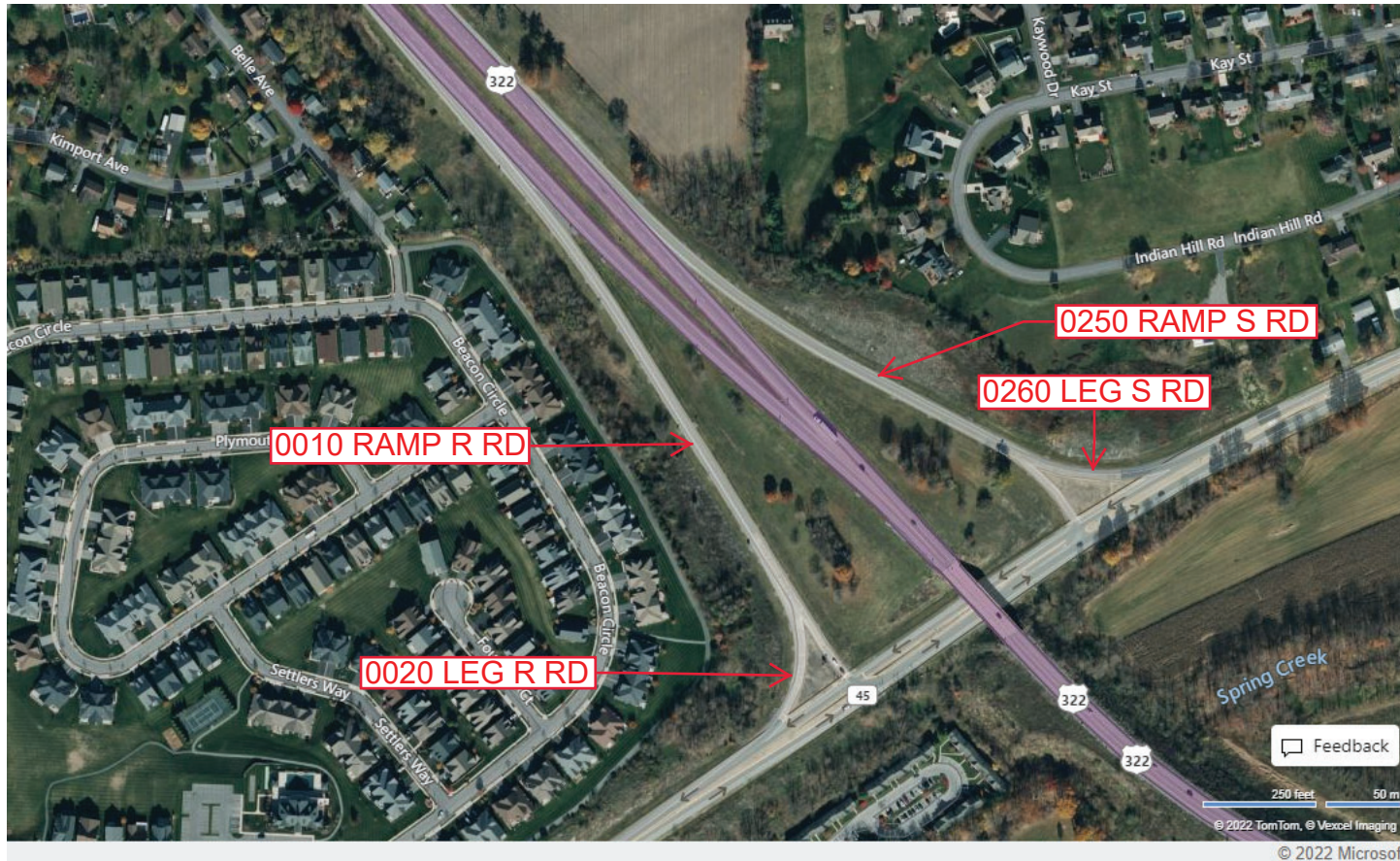
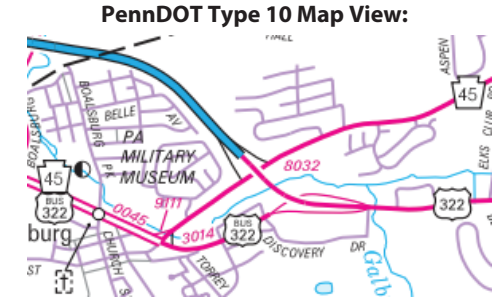
Intersecting SR's: US 322 & PA 45 Earlstown Rd

Ramp Segment Number and Ramp Segment Length Information:

Segment	Length	Segment	Length	Segment	Length	Segment	Length
0010	1328						
0020	0231						
0250	1081						
0260	0240						

Primary Route Interchange Exit Number

Secondary Route Interchange Exit Number



Last Date Modified: Nov 8, 2022

County: 14

RMS Interchange Information

Bureau of Maintenance & Operations
Asset Management Division

Print Form



Interchange Number: 8034

Interchange Name: LAUREL RUN INT

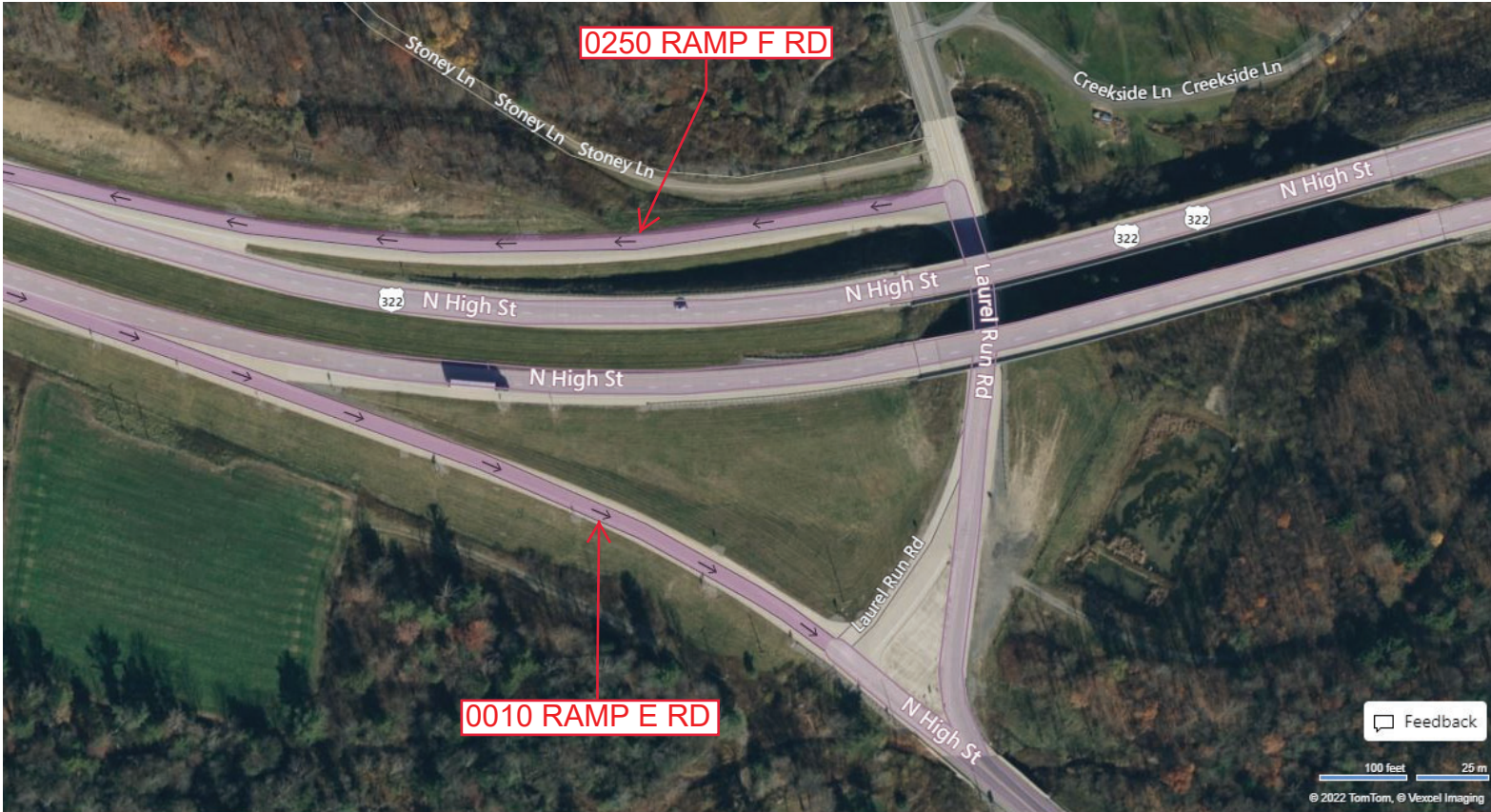
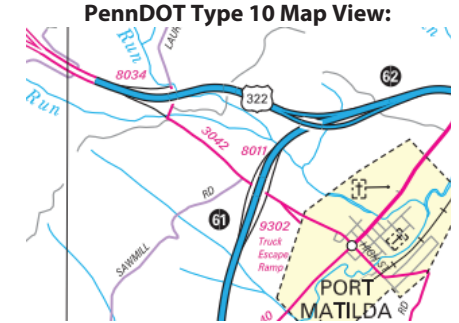
Intersecting SR's: US 322 & SR 3042 High St

Ramp Segment Number and Ramp Segment Length Information:

Segment	Length	Segment	Length	Segment	Length	Segment	Length
0010	0883						
0250	0843						

Primary Route Interchange Exit Number

Secondary Route Interchange Exit Number



Feedback

100 feet 25 m
© 2022 TomTom, © Vexcel Imaging

© 2022 Microsoft

Last Date Modified:

Nov 8, 2022

County: 14

RMS Interchange Information

Print Form

Interchange Number: 8036

Bureau of Maintenance & Operations
Roadway Management Division



Interchange Name: UNIVERSITY DRIVE

Intersecting SR's: PA 26 & SR 3022 University Dr

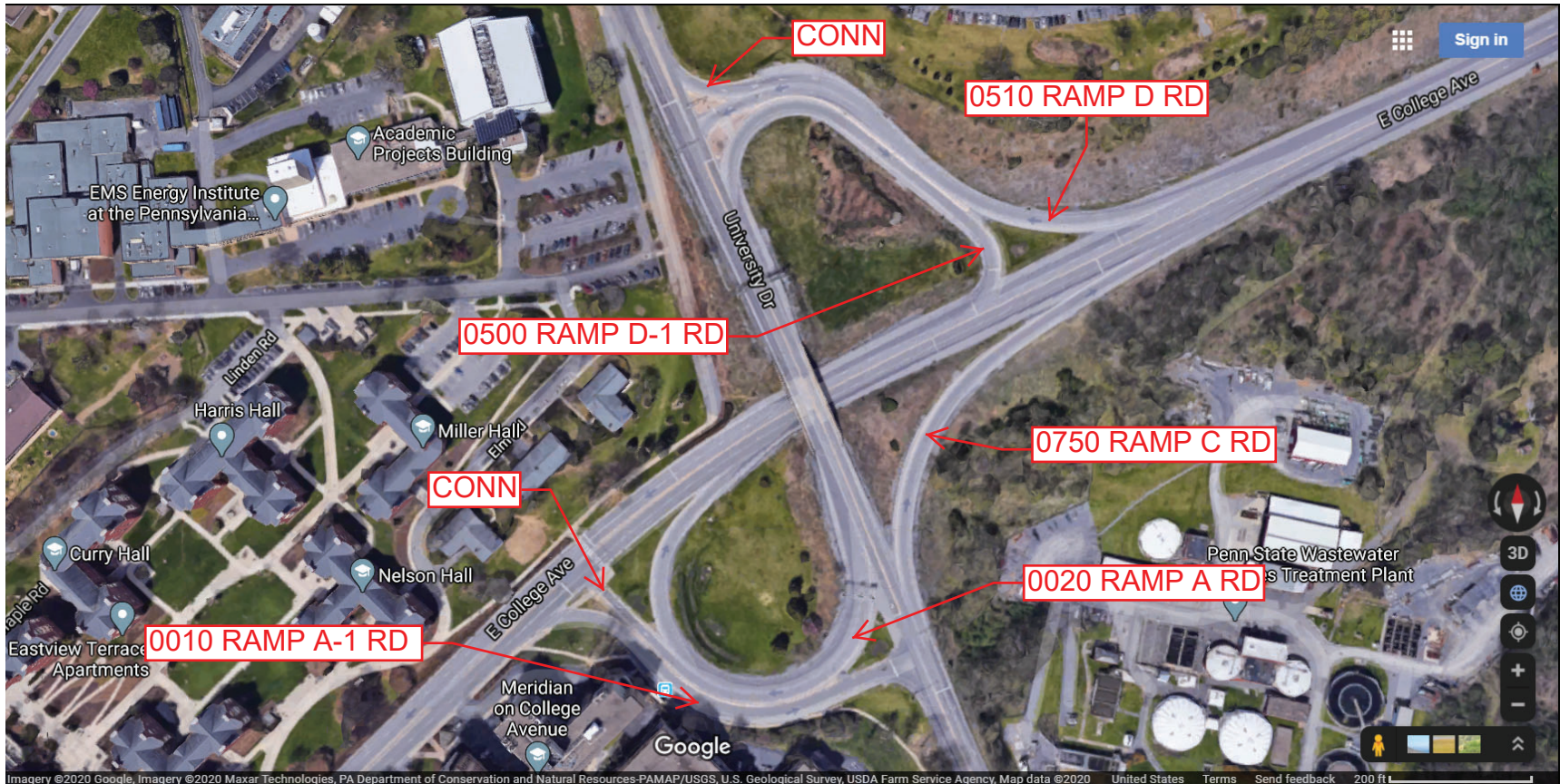
Ramp Segment Number and Ramp Segment Length Information:

Segment	Length	Segment	Length	Segment	Length	Segment	Length
0010	0528						
0020	0575						
0500	0524						
0510	0624						
0750	0455						

Primary Route
Interchange Exit
Number

Secondary Route
Interchange Exit
Number

PennDOT Type 10 Map View:



Last Date Modified:

Aug 14, 2020

County: 14

RMS Interchange Information

Print Form

Interchange Number: 8037

Bureau of Maintenance & Operations
Asset Management Division



Interchange Name: BELLEFONTE INT

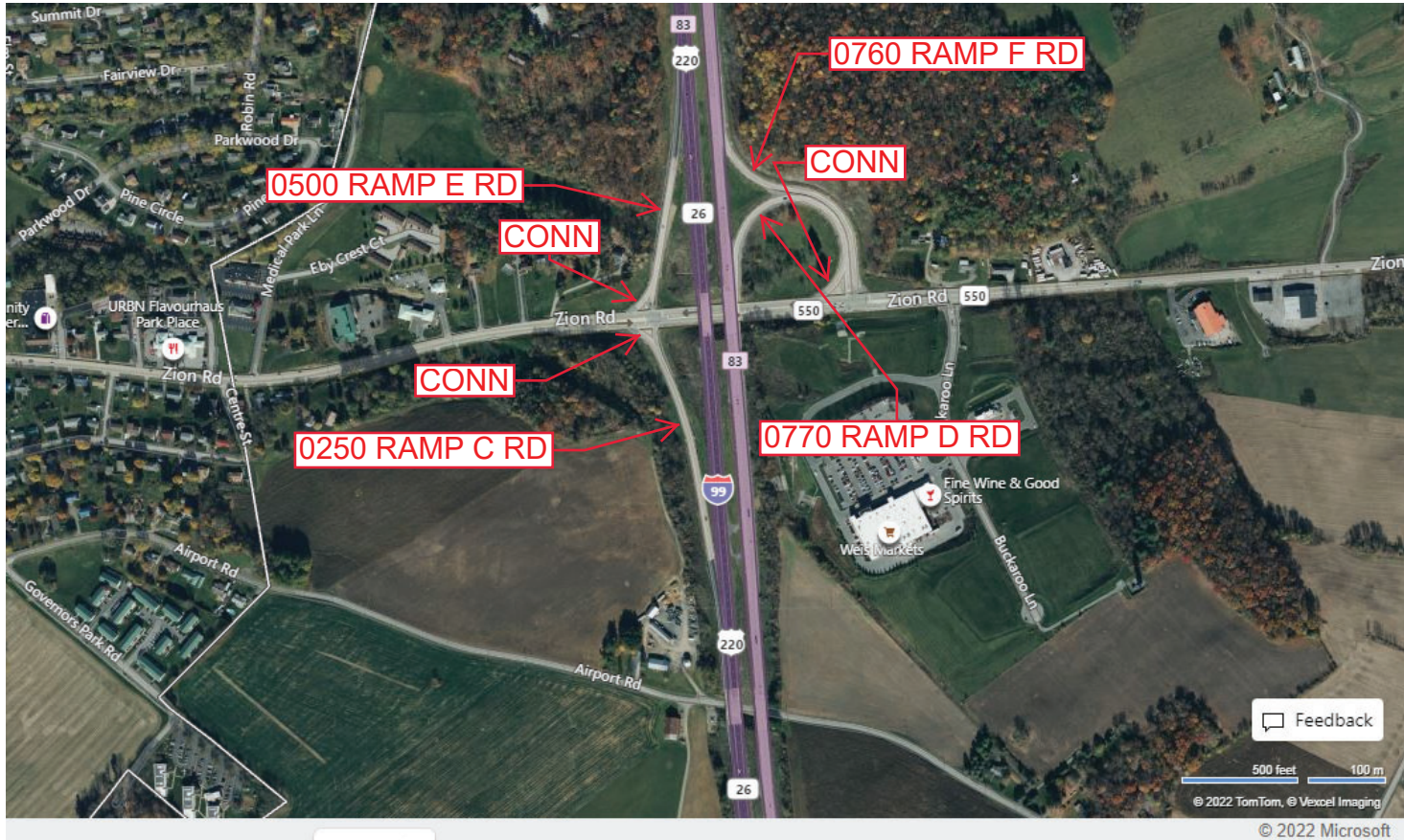
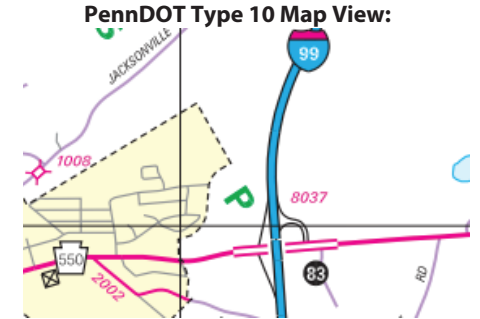
Intersecting SR's: I-99 & PA 550 Zion Rd

Ramp Segment Number and Ramp Segment Length Information:

Segment	Length	Segment	Length	Segment	Length	Segment	Length
0250	1320						
0500	0928						
0760	0986						
0770	0962						

Primary Route Interchange Exit Number: 83

Secondary Route Interchange Exit Number



Feedback

500 feet 100 m
© 2022 TomTom, © Vexcel Imaging

© 2022 Microsoft

Last Date Modified: Nov 8, 2022

County: 14

RMS Interchange Information

Print Form

Interchange Number: 8040

Bureau of Maintenance & Operations
Asset Management Division



Interchange Name: BOAL AVENUE INT

Intersecting SR's: US 322 & SR 3014 Boal Av

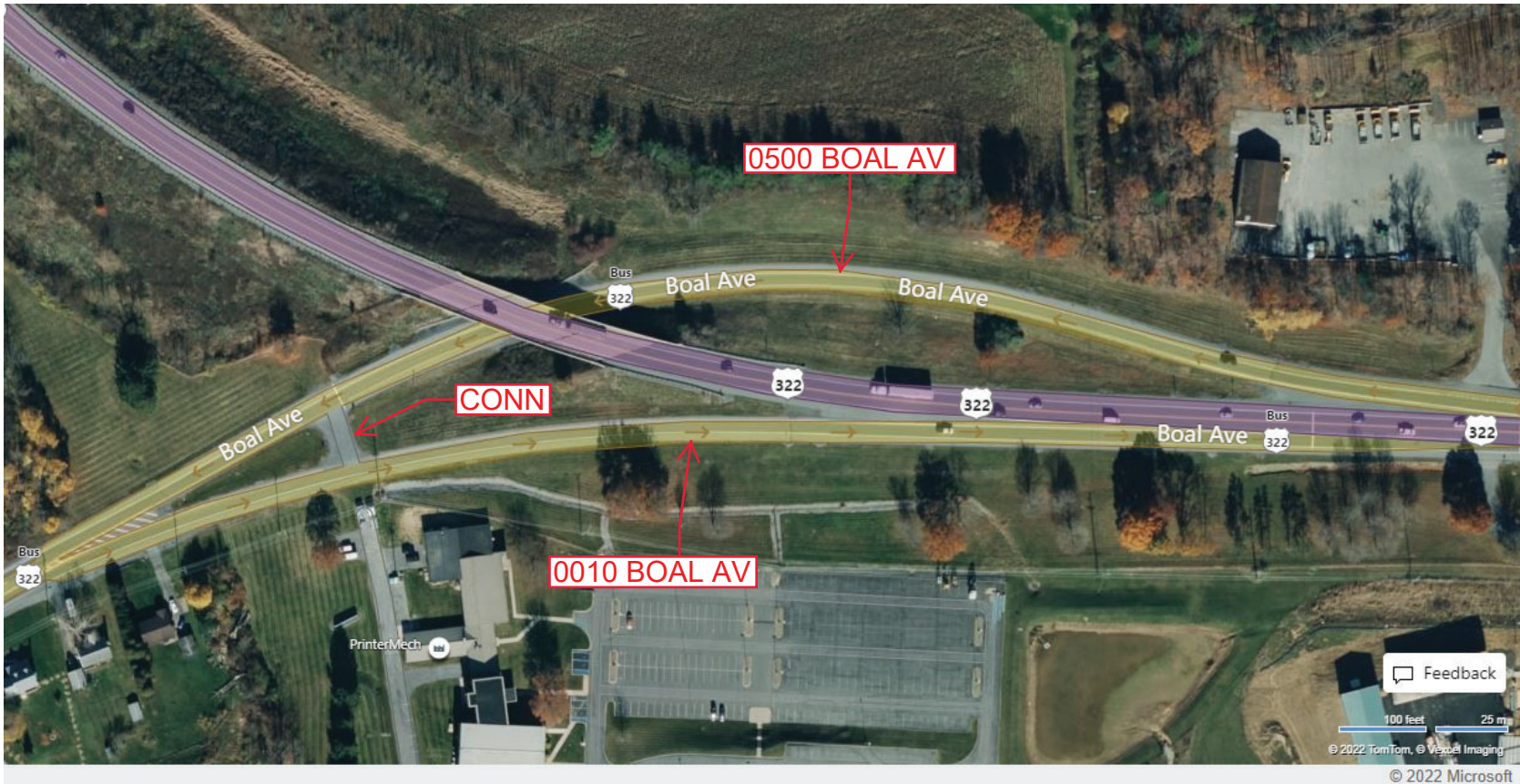
Ramp Segment Number and Ramp Segment Length Information:

Segment	Length	Segment	Length	Segment	Length	Segment	Length
0010	0791						
0500	1406						

Primary Route Interchange Exit Number

Secondary Route Interchange Exit Number

PennDOT Type 10 Map View:
PennDOT Type 10 Map View:



Last Date Modified:

Nov 9, 2022

County: 14

RMS Interchange Information

Print Form

Interchange Number: 8042

Bureau of Maintenance & Operations
Roadway Management Division



Interchange Name: POTTERS MILLS INT

Intersecting SR's: US 0322 & SR 2015 & SR 2020

Ramp Segment Number and Ramp Segment Length Information:

Segment	Length	Segment	Length	Segment	Length	Segment	Length
0010	0601						
0250	0513						
0500	0895						
0750	0459						

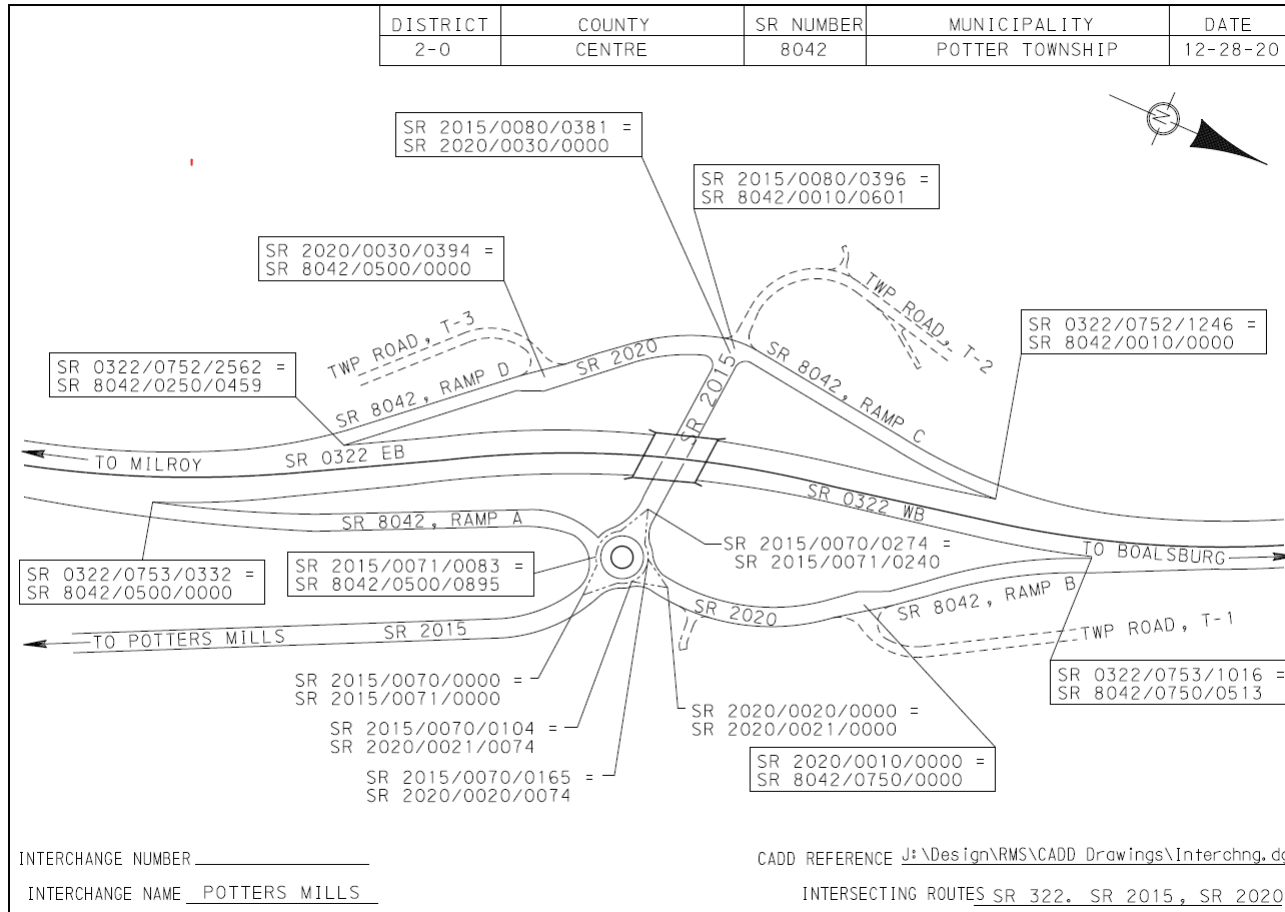
Primary Route
Interchange Exit
Number

Secondary Route
Interchange Exit
Number

PennDOT Type 10 Map View:

Align top of image to just slightly
cover the top of the dashed line

Paste Type 10 Image Here
(Map needs to cover
dashed area)



This is temporary until
there is an image
available.

Last Date Modified:

Dec 29, 2020

County: 14

RMS Interchange Information

Print Form

Interchange Number: 8044

Bureau of Maintenance & Operations
Asset Management Division



Interchange Name: SAND MOUNTAIN RD INT

Intersecting SR's: US 322 Twenty Eighth Division Hw & SR 1015, SR 1017

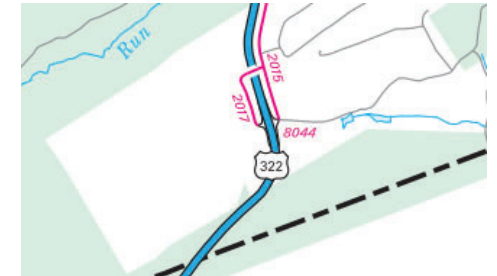
Ramp Segment Number and Ramp Segment Length Information:

Segment	Length	Segment	Length	Segment	Length	Segment	Length
0010	0348						
0250	0120						
0500	0330						
0750	0134						

Primary Route
Interchange Exit
Number

Secondary Route
Interchange Exit
Number

PennDOT Type 10 Map View:



Last Date Modified:

Nov 9, 2022

County: 14

RMS Interchange Information

Print Form

Bureau of Maintenance & Operations
Roadway Management Division



Interchange Number: 9101

Interchange Name: SR 9101 WYE RD

Intersecting SR's: PA 64 & PA 550 Zion Rd

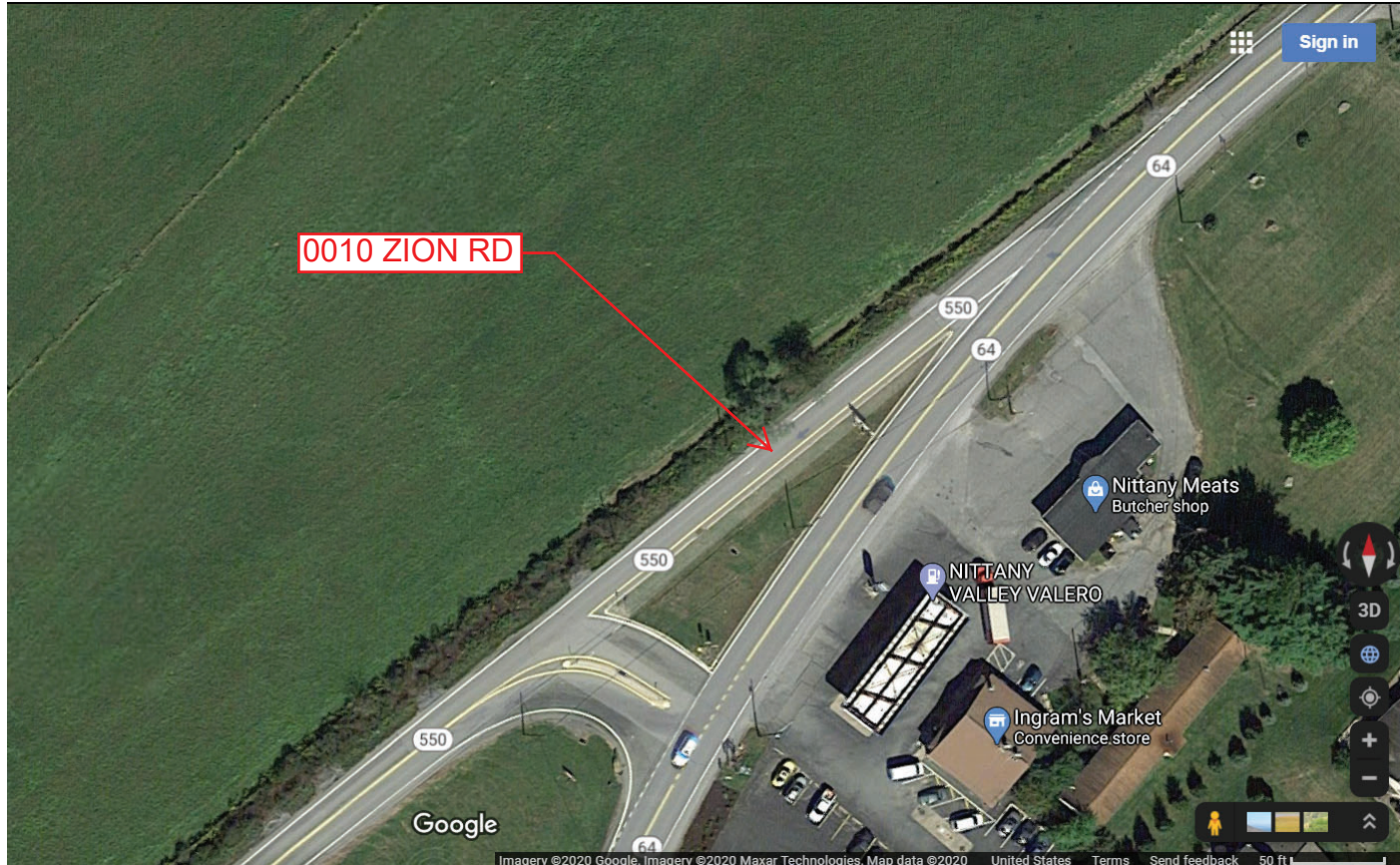
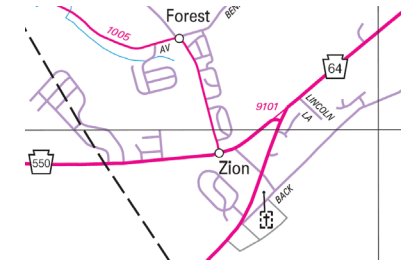
Ramp Segment Number and Ramp Segment Length Information:

Segment	Length	Segment	Length	Segment	Length	Segment	Length
0010	0235						

Primary Route
Interchange Exit
Number

Secondary Route
Interchange Exit
Number

PennDOT Type 10 Map View:



Last Date Modified:

Aug 14, 2020

County: 14

RMS Interchange Information

Print Form

Interchange Number: 9102

Bureau of Maintenance & Operations
Asset Management Division



Interchange Name: SR 9102 WYE RD

Intersecting SR's: PA 26 Benner Pk & PA 150 College Av

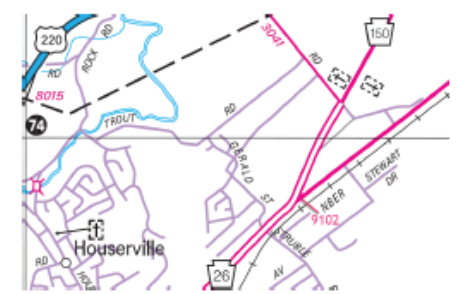
Ramp Segment Number and Ramp Segment Length Information:

Segment	Length	Segment	Length	Segment	Length	Segment	Length
0750	0399						

Primary Route Interchange Exit Number

Secondary Route Interchange Exit Number

PennDOT Type 10 Map View:



0750 COLLEGE AV

Feedback

100 feet 25 m

© 2022 TomTom, © Vexcel Imaging

© 2022 Microsoft

Last Date Modified: Nov 9, 2022

County: 14

RMS Interchange Information

Print Form

Bureau of Maintenance & Operations
Asset Management Division



Interchange Number: 9109

Interchange Name: **ATHERTON & BOALSBURG**

Intersecting SR's: **PA 45 Shingletown Rd & SR 3014 Atherton St**

Ramp Segment Number and Ramp Segment Length Information:

Segment	Length	Segment	Length	Segment	Length	Segment	Length
0010	0349						

Primary Route Interchange Exit Number

Secondary Route Interchange Exit Number

PennDOT Type 10 Map View:



Feedback
100 feet 25 m
© 2022 TomTom, © Vexcel Imaging
© 2022 Microsoft

County: 14

RMS Interchange Information

Bureau of Maintenance & Operations
Asset Management Division

Print Form



Interchange Number: 9111

Interchange Name: BOAL AVE & EARLYTOWN RD

Intersecting SR's: PA 45 Earlytown Rd & Boal Av

Ramp Segment Number and Ramp Segment Length Information:

Segment	Length	Segment	Length	Segment	Length	Segment	Length
0500	0214						

Primary Route Interchange Exit Number

Secondary Route Interchange Exit Number

PennDOT Type 10 Map View:



Last Date Modified:

Nov 10, 2022

County: 14

RMS Interchange Information

Print Form

Interchange Number: 9201

Bureau of Maintenance & Operations
Asset Management Division



Interchange Name: SNOW SHOE I-80 WB REST AREA

Intersecting SR's: I-80 Confair Memorial Hw

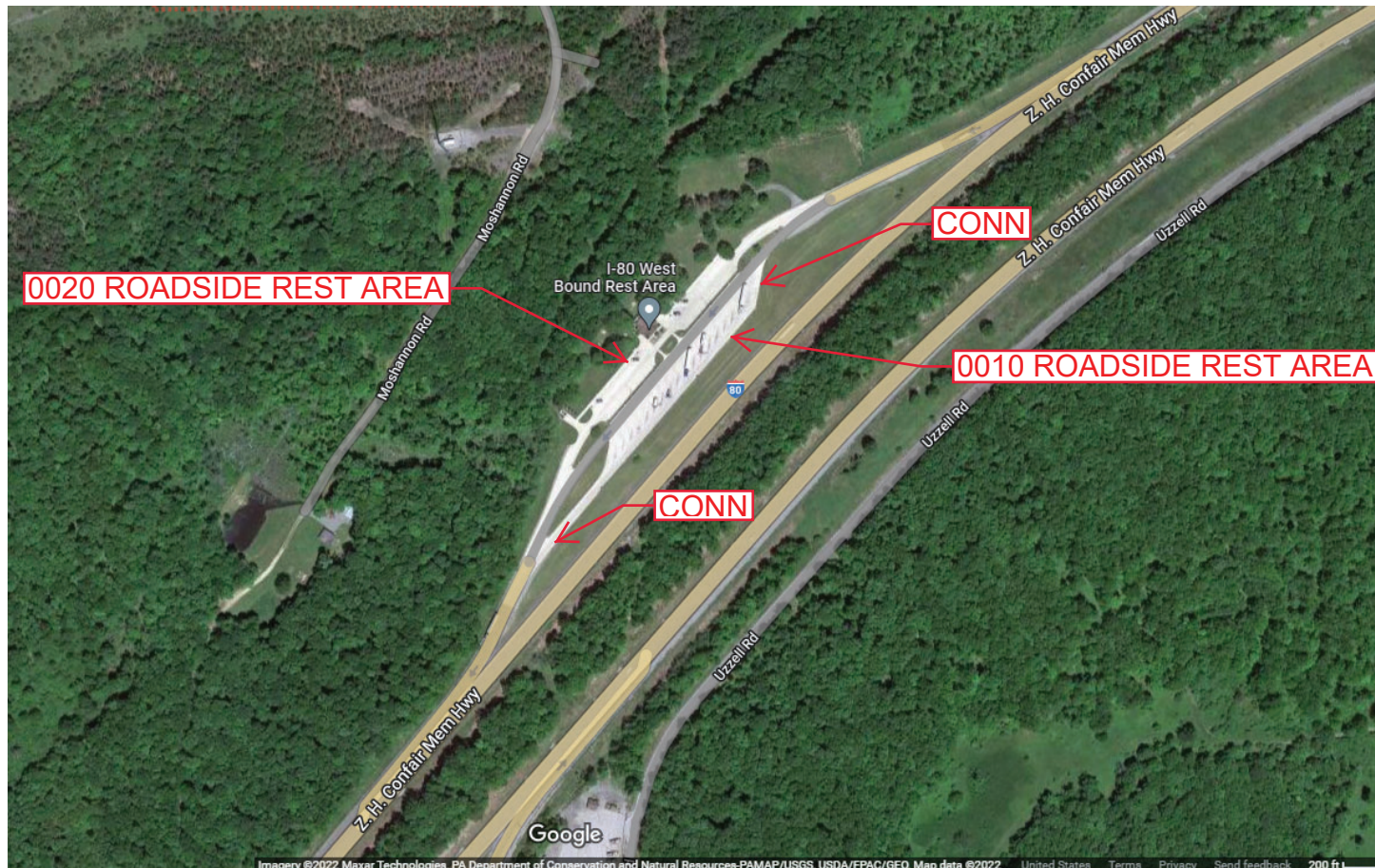
Ramp Segment Number and Ramp Segment Length Information:

Segment	Length	Segment	Length	Segment	Length	Segment	Length
0010	1894						
0020	0825						

Primary Route Interchange Exit Number

Secondary Route Interchange Exit Number

PennDOT Type 10 Map View:



Last Date Modified:

Nov 14, 2022

County: 14

RMS Interchange Information

Print Form

Interchange Number: 9202

Bureau of Maintenance & Operations
Asset Management Division



Interchange Name: SNOW SHOE I-80 EB REST AREA

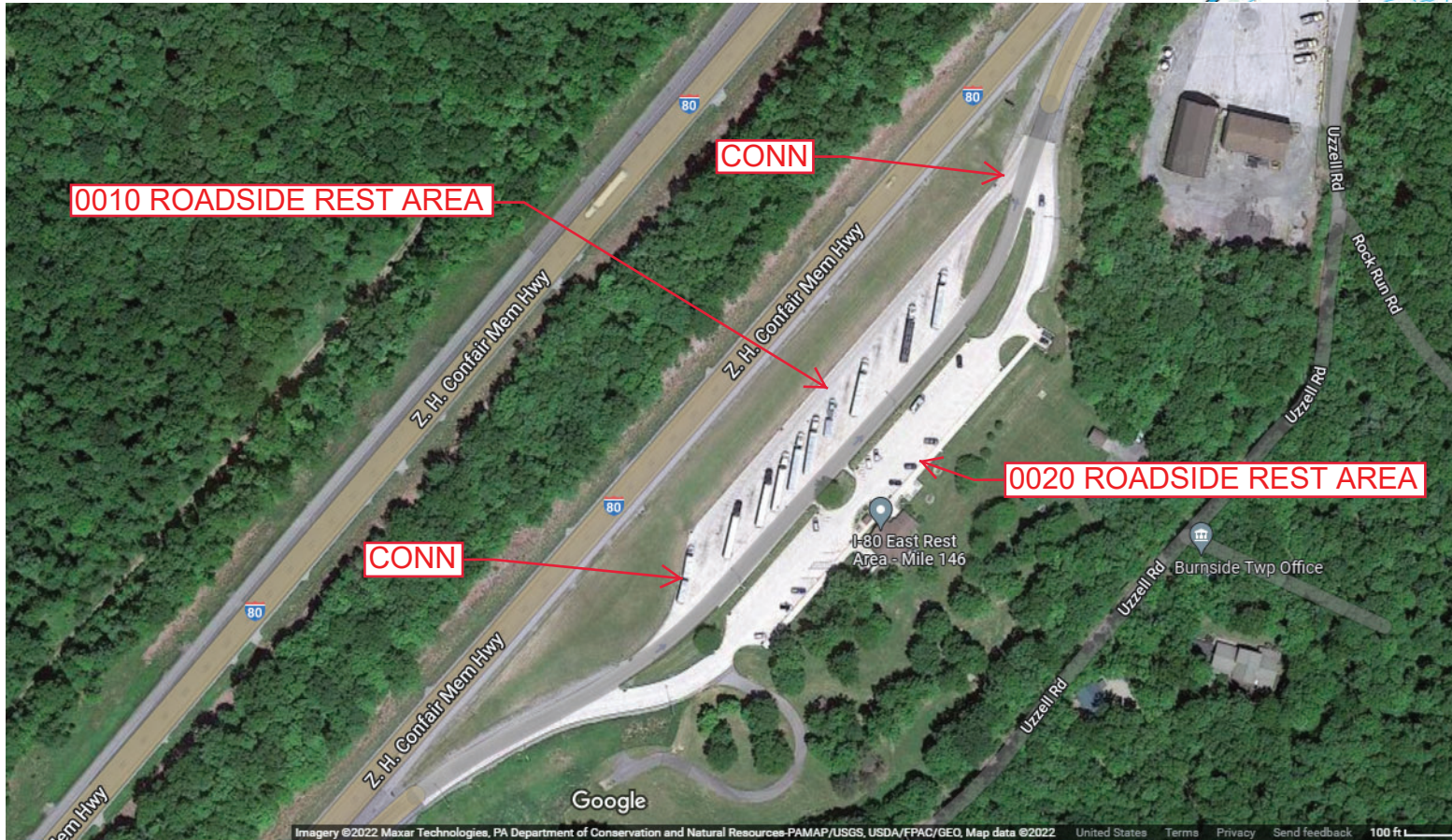
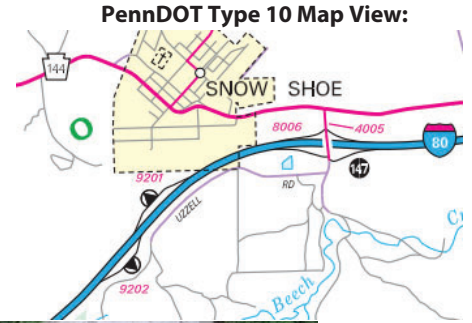
Intersecting SR's: I-80 Confair Memorial Hw

Ramp Segment Number and Ramp Segment Length Information:

Segment	Length	Segment	Length	Segment	Length	Segment	Length
0010	1381						
0020	0830						

Primary Route Interchange Exit Number

Secondary Route Interchange Exit Number



Last Date Modified: Nov 15, 2022

County: 14

RMS Interchange Information

Print Form

Bureau of Maintenance & Operations
Asset Management Division



Interchange Number: 9203

Interchange Name: PHILIPSBURG US 322 REST AREA

Intersecting SR's: US 322 Twenty Eight Division Hw

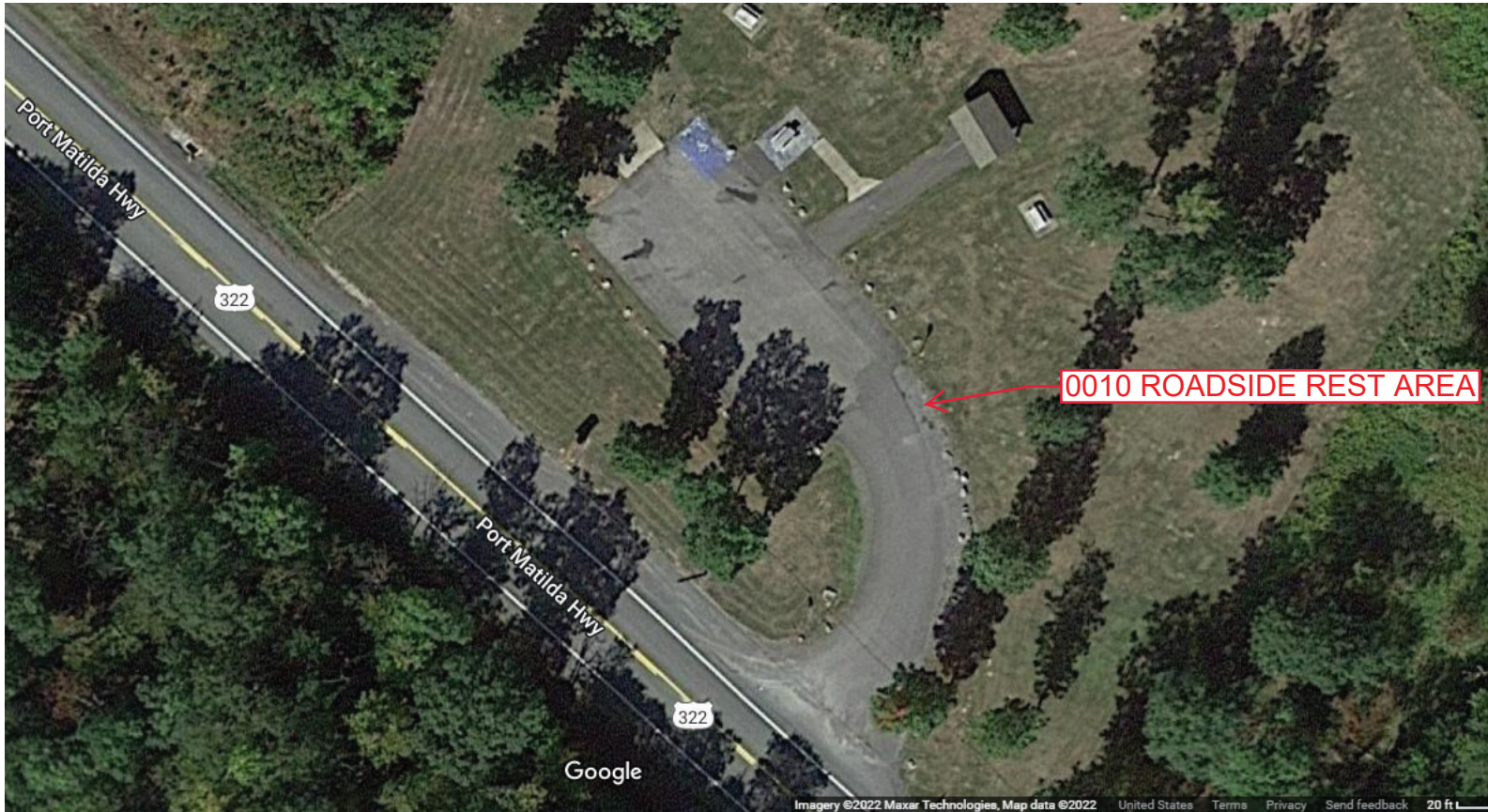
Ramp Segment Number and Ramp Segment Length Information:

Segment	Length	Segment	Length	Segment	Length	Segment	Length
0010	0222						

Primary Route Interchange Exit Number

Secondary Route Interchange Exit Number

PennDOT Type 10 Map View:



Last Date Modified:

Nov 15, 2022

County: 14

RMS Interchange Information

Bureau of Maintenance & Operations
Asset Management Division

Print Form



Interchange Number: 9204

Interchange Name: HOWARD TWP ROADSIDE REST AREA

Intersecting SR's: PA 150 Bald Eagle Valley Rd

Ramp Segment Number and Ramp Segment Length Information:

Segment	Length	Segment	Length	Segment	Length	Segment	Length
0010	0475						

Primary Route Interchange Exit Number

Secondary Route Interchange Exit Number

PennDOT Type 10 Map View:



Feedback

50 feet 20 m
© 2022 TomTom, © Vexcel Imaging

© 2022 Microsoft

Last Date Modified:

Nov 28, 2022

County: 14

RMS Interchange Information

Bureau of Maintenance & Operations
Asset Management Division

Print Form



Interchange Number: 9301

Interchange Name: RUSH TWP SR 322 ESCAPE RAMP

Intersecting SR's: US 322 Twenty-Eighth Division Hw

Ramp Segment Number and Ramp Segment Length Information:

Segment	Length	Segment	Length	Segment	Length	Segment	Length
0010	0365						

Primary Route Interchange Exit Number

Secondary Route Interchange Exit Number

PennDOT Type 10 Map View:



Last Date Modified:

Nov 29, 2022

County: 14

RMS Interchange Information

Print Form

Interchange Number: 9302

Bureau of Maintenance & Operations
Asset Management Division



Interchange Name: PORT MATILDA SR 322 ESCAPE RAMP

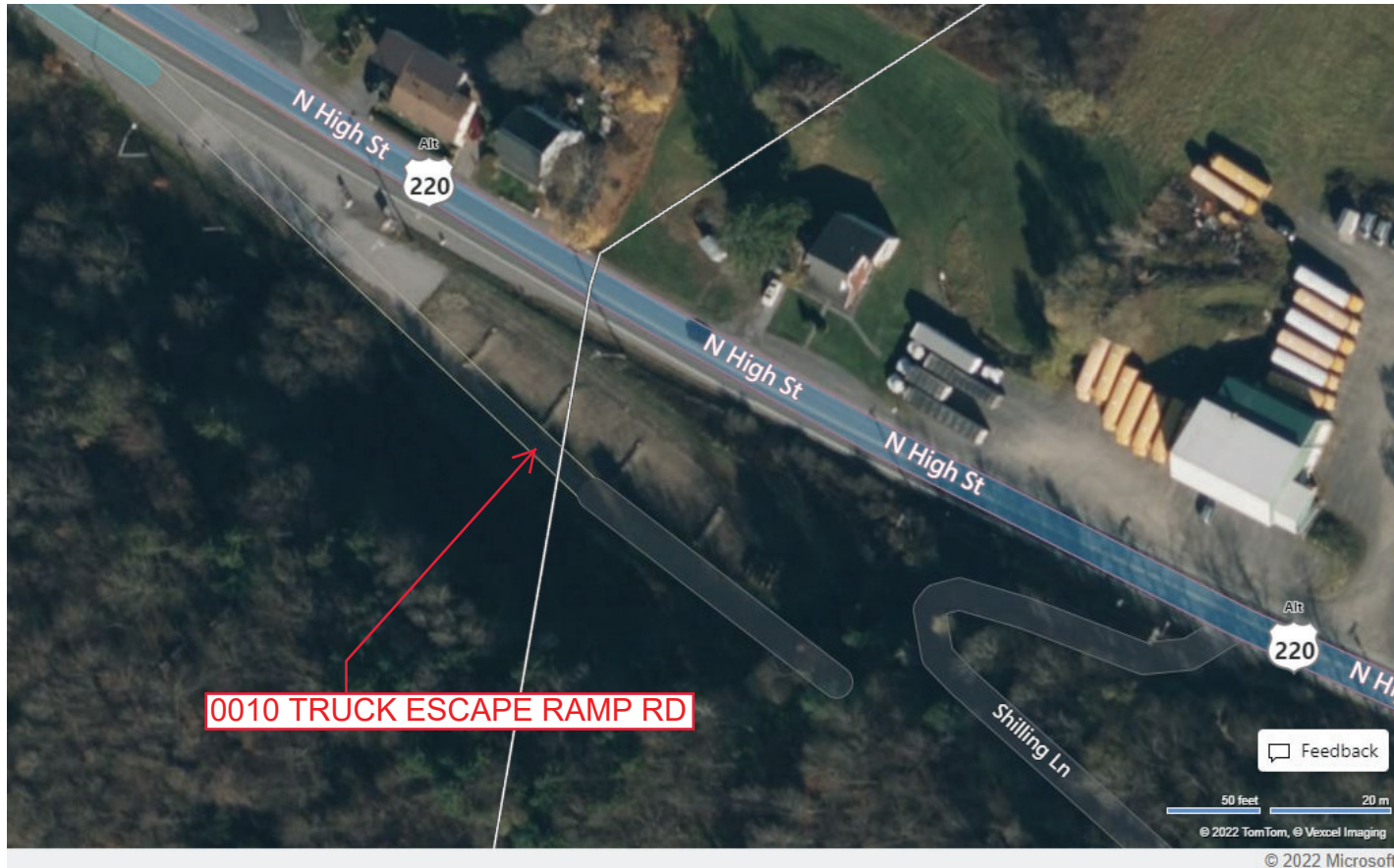
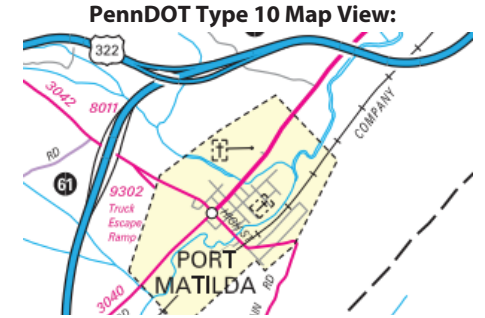
Intersecting SR's: SR 3042 Twenty-Eighth Division Hw

Ramp Segment Number and Ramp Segment Length Information:

Segment	Length	Segment	Length	Segment	Length	Segment	Length
0010	0329						

Primary Route
Interchange Exit
Number

Secondary Route
Interchange Exit
Number



Last Date Modified:

Nov 29, 2022

County: 14

RMS Interchange Information

Print Form

Interchange Number: 9303

Bureau of Maintenance & Operations
Asset Management Division



Interchange Name: SPRING TWP SR 144 ESCAPE RAMP

Intersecting SR's: PA 144 Main St

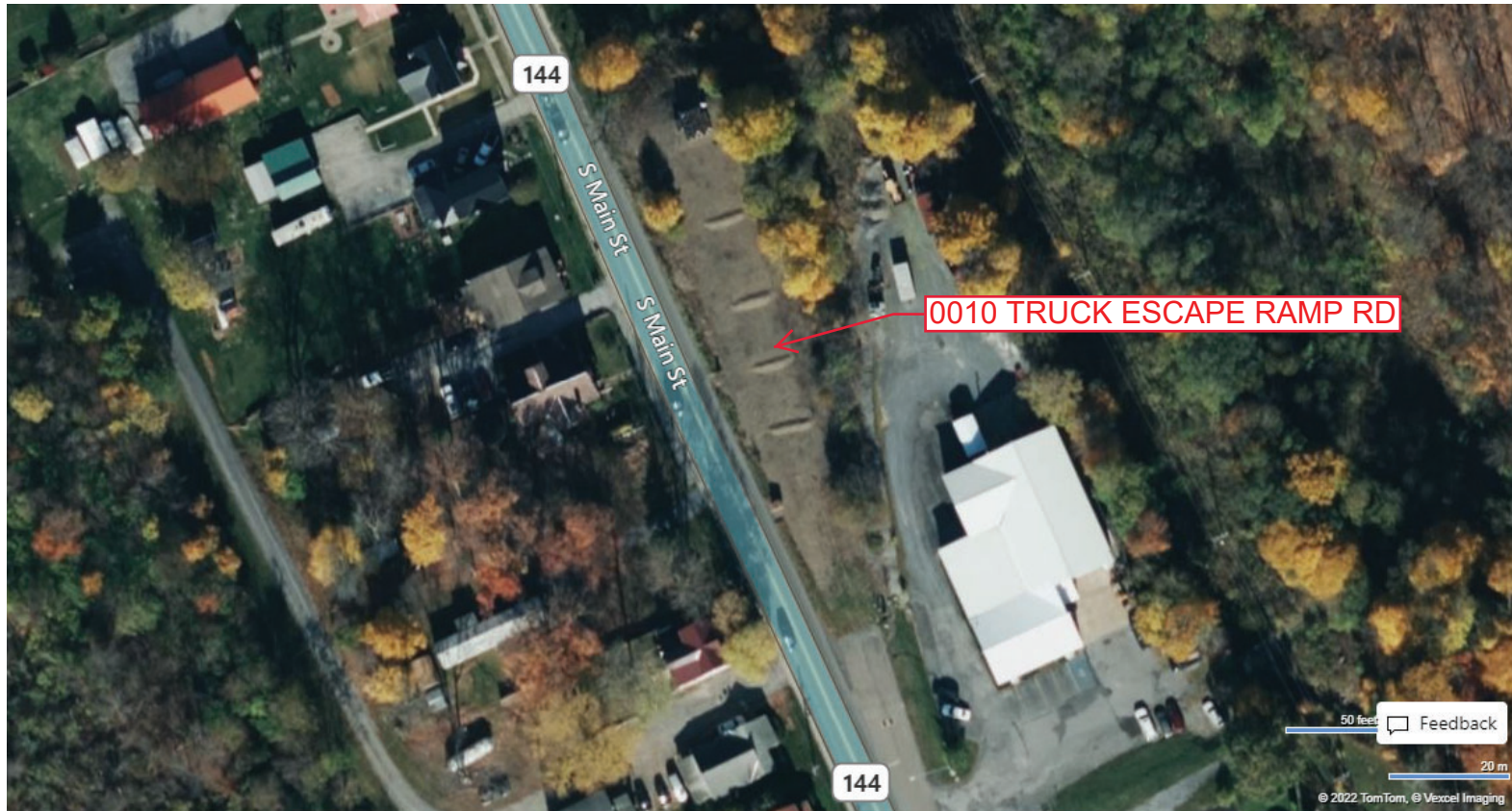
Ramp Segment Number and Ramp Segment Length Information:

Segment	Length	Segment	Length	Segment	Length	Segment	Length
0010	0338						

Primary Route
Interchange Exit
Number

Secondary Route
Interchange Exit
Number

PennDOT Type 10 Map View:



50 feet Feedback 20 m © 2022 TomTom, © Vexcel Imaging

© 2022 Microsoft

Last Date Modified:

Nov 29, 2022

County: 14

RMS Interchange Information

Print Form

Interchange Number: 9304

Bureau of Maintenance & Operations
Asset Management Division



Interchange Name: CENTRE HALL SR 144 ESCAPE RAMP

Intersecting SR's: PA 144 Pennsylvania Ave

Ramp Segment Number and Ramp Segment Length Information:

Segment	Length	Segment	Length	Segment	Length	Segment	Length
0010	0292						

Primary Route
Interchange Exit
Number

Secondary Route
Interchange Exit
Number

PennDOT Type 10 Map View:



50 feet Feedback
20 m
© 2022 TomTom, © Vexcel Imaging
© 2022 Microsoft

Last Date Modified:

Nov 29, 2022

County: 14

RMS Interchange Information

Print Form

Interchange Number: 9305

Bureau of Maintenance & Operations
Asset Management Division



Interchange Name: SR 26 TRUCK ESCAPE RAMP

Intersecting SR's: PA 26 Water St

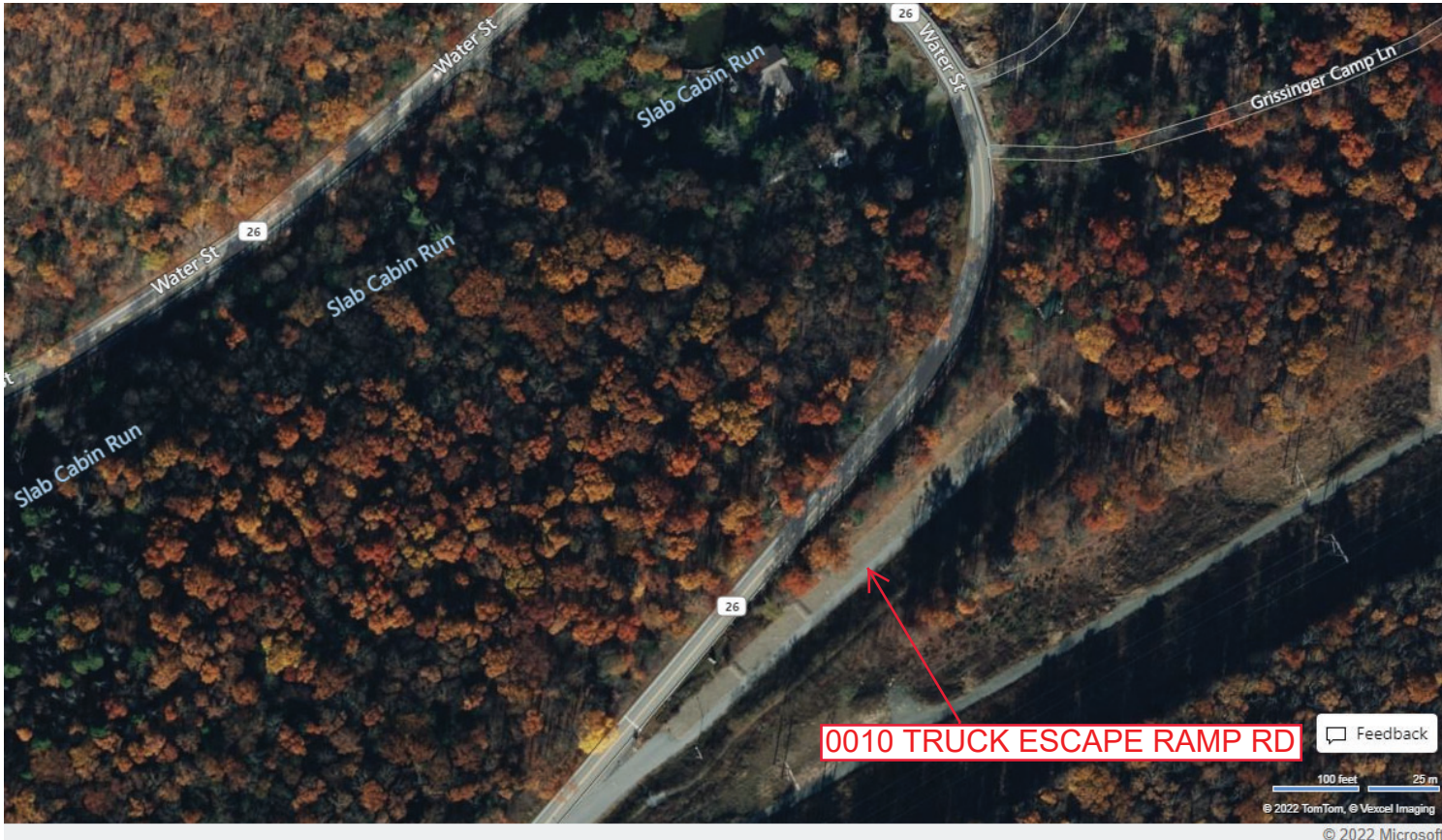
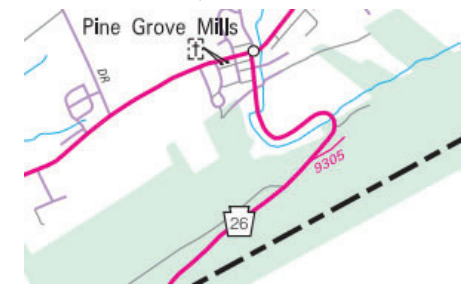
Ramp Segment Number and Ramp Segment Length Information:

Segment	Length	Segment	Length	Segment	Length	Segment	Length
0010	0690						

Primary Route Interchange Exit Number

Secondary Route Interchange Exit Number

PennDOT Type 10 Map View:



0010 TRUCK ESCAPE RAMP RD

Feedback

100 feet 25 m
© 2022 TomTom, © Vexcel Imaging
© 2022 Microsoft

Last Date Modified:

Nov 30, 2022

County: 14

RMS Interchange Information

Print Form

Interchange Number: 9426

Bureau of Maintenance & Operations
Asset Management Division



Interchange Name: SPRING TWP BYPASS END

Intersecting SR's: PA 26 Ramp End Rd & Gov't Dead End Rd

Ramp Segment Number and Ramp Segment Length Information:

Segment	Length	Segment	Length	Segment	Length	Segment	Length
0010	0220						

Primary Route
Interchange Exit
Number

Secondary Route
Interchange Exit
Number

PennDOT Type 10 Map View:



Last Date Modified:

Dec 5, 2022