

County: 17

# RMS Interchange Information

Print Form

Interchange Number: 8002

Bureau of Maintenance & Operations  
Asset Management Division



Interchange Name: FALLS CREEK INT

Intersecting SR's: I-80 & US 219 Buffalo Pittsburgh Hw

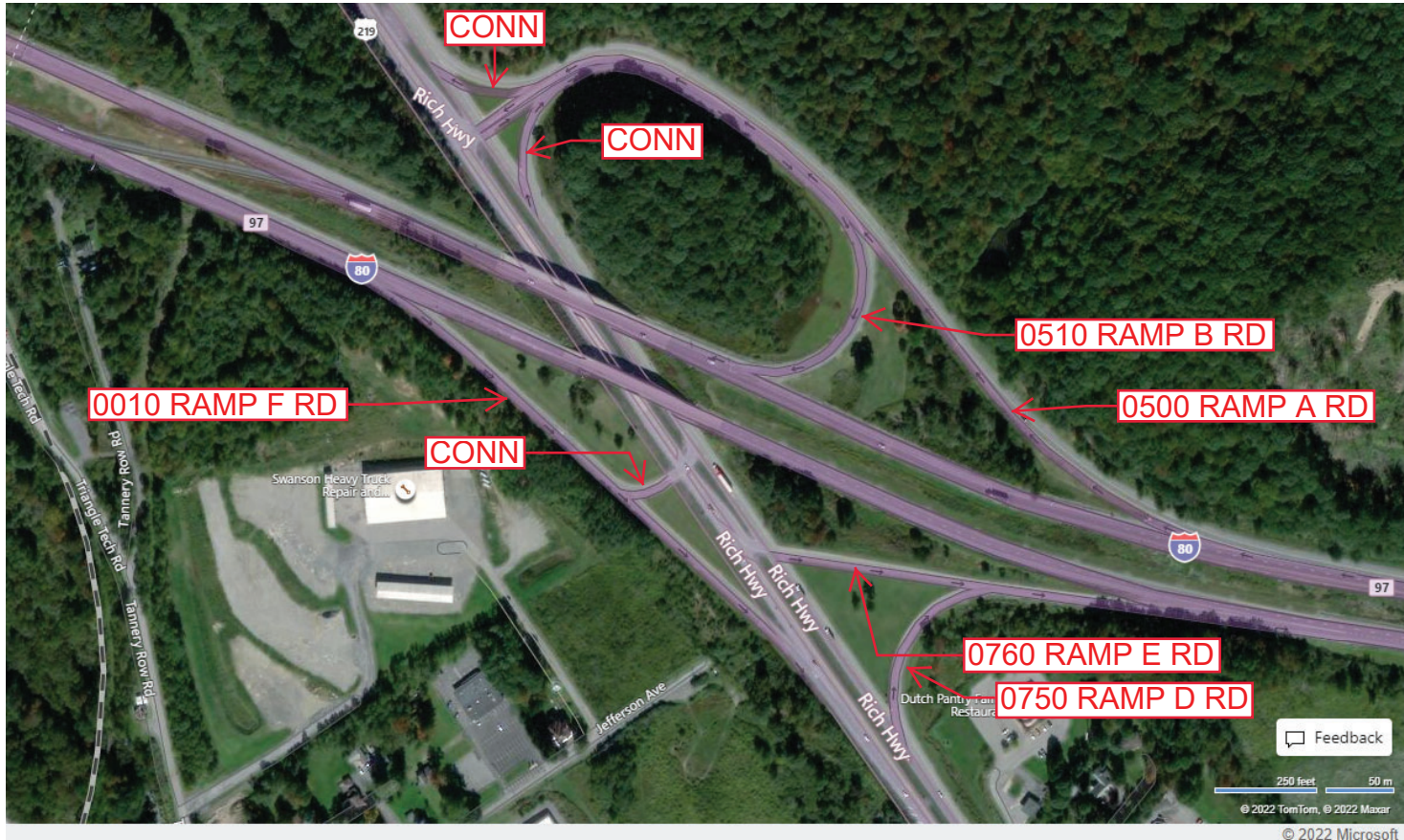
Ramp Segment Number and Ramp Segment Length Information:

Segment	Length	Segment	Length	Segment	Length	Segment	Length
0010	1277						
0500	2260						
0510	1632						
0750	0843						
0760	0453						

Primary Route Interchange Exit Number: 97

Secondary Route Interchange Exit Number

PennDOT Type 10 Map View:



Last Date Modified: Dec 5, 2022



County: 17

# RMS Interchange Information

Print Form

Interchange Number: 8004

Bureau of Maintenance & Operations  
Asset Management Division



Interchange Name: DOBOIS INT

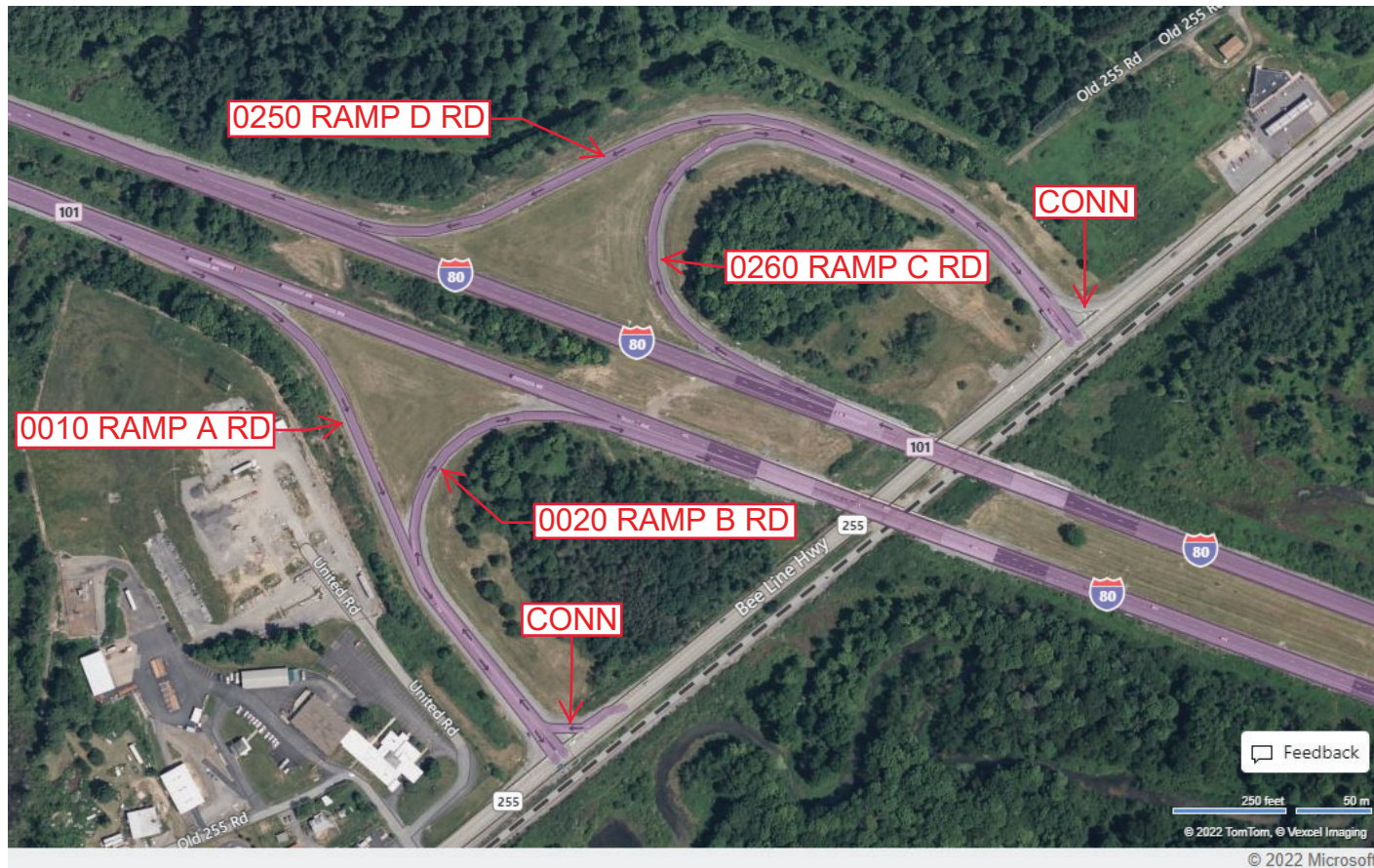
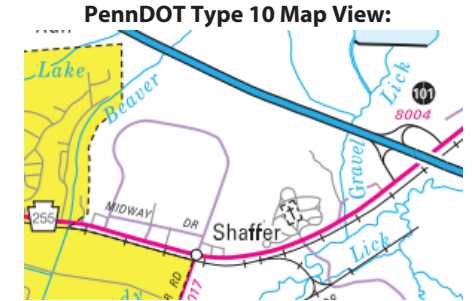
Intersecting SR's: I-80 & PA 255 Bee Line Hw

Ramp Segment Number and Ramp Segment Length Information:

Segment	Length	Segment	Length	Segment	Length	Segment	Length
0010	1233						
0020	1120						
0250	1820						
0260	1571						

Primary Route Interchange Exit Number: 101

Secondary Route Interchange Exit Number



Last Date Modified:

Dec 6, 2022



County: 17

# RMS Interchange Information

Print Form

Interchange Number: 8006

Bureau of Maintenance & Operations  
Asset Management Division



Interchange Name: ELLIOTT PARK INT

Intersecting SR's: I-80 & PA 153

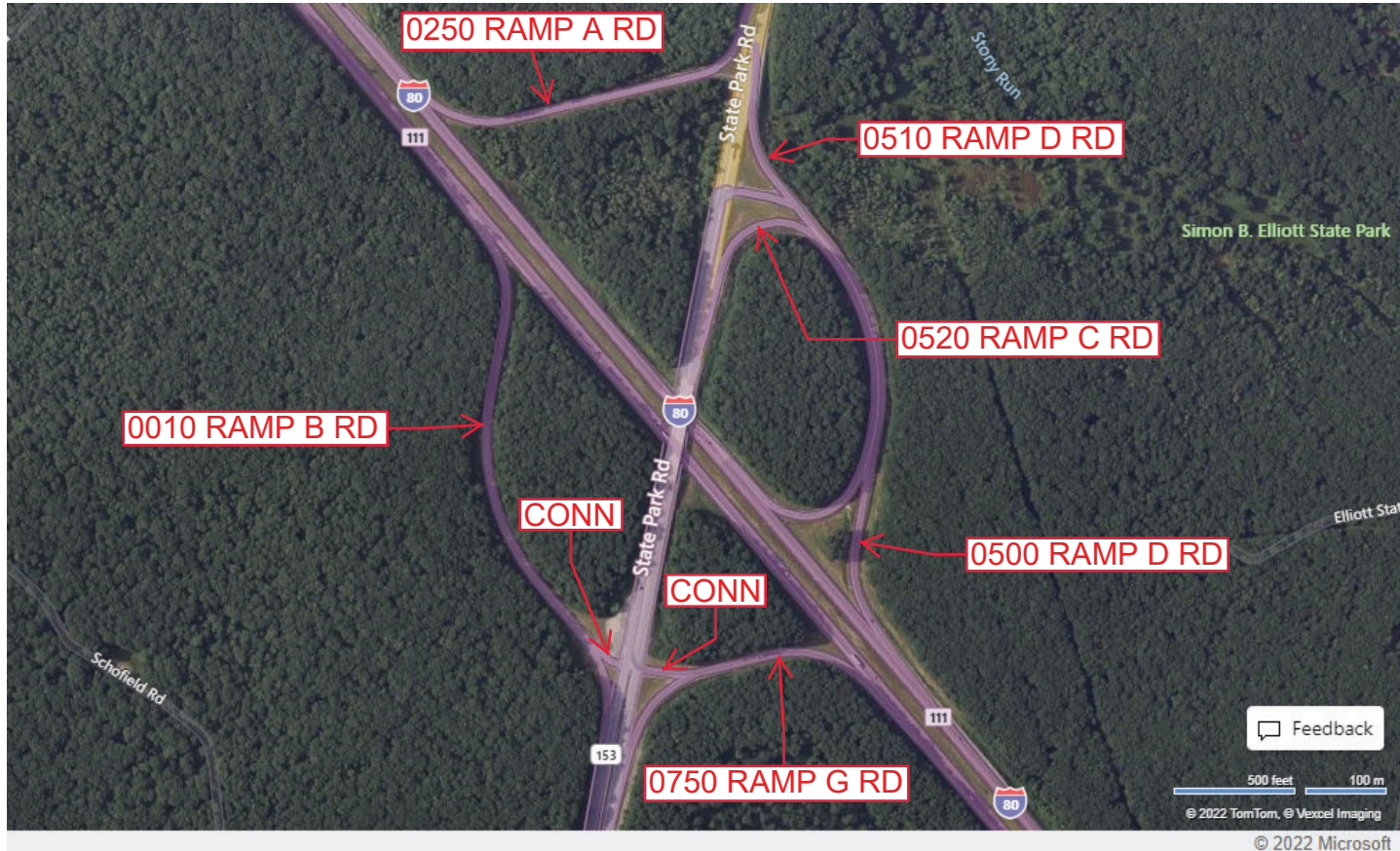
Ramp Segment Number and Ramp Segment Length Information:

Segment	Length	Segment	Length	Segment	Length	Segment	Length
0010	2164	0750	1201				
0250	1507						
0500	2208						
0510	0509						
0520	2086						

Primary Route Interchange Exit Number: 111

Secondary Route Interchange Exit Number

PennDOT Type 10 Map View:



Feedback

500 feet 100 m  
© 2022 TomTom, © Vexxel Imaging

© 2022 Microsoft

Last Date Modified:

Dec 6, 2022



County: 17

# RMS Interchange Information

Print Form

Interchange Number: 8009

Bureau of Maintenance & Operations  
Asset Management Division



Interchange Name: PARK AVENUE INT

Intersecting SR's: PA 153 Park Av & PA 879 Clearfield Bp

Ramp Segment Number and Ramp Segment Length Information:

Segment	Length	Segment	Length	Segment	Length	Segment	Length
0250	1216						
0260	0273						
0270	1176						
0280	0333						

Primary Route Interchange Exit Number

Secondary Route Interchange Exit Number

PennDOT Type 10 Map View:



Last Date Modified:

Dec 7, 2022



County: 17

# RMS Interchange Information

Print Form

Interchange Number: 8010

Bureau of Maintenance & Operations  
Asset Management Division



Interchange Name: CLEARFIELD INT

Intersecting SR's: I-80 & PA 879 Shawville Rd

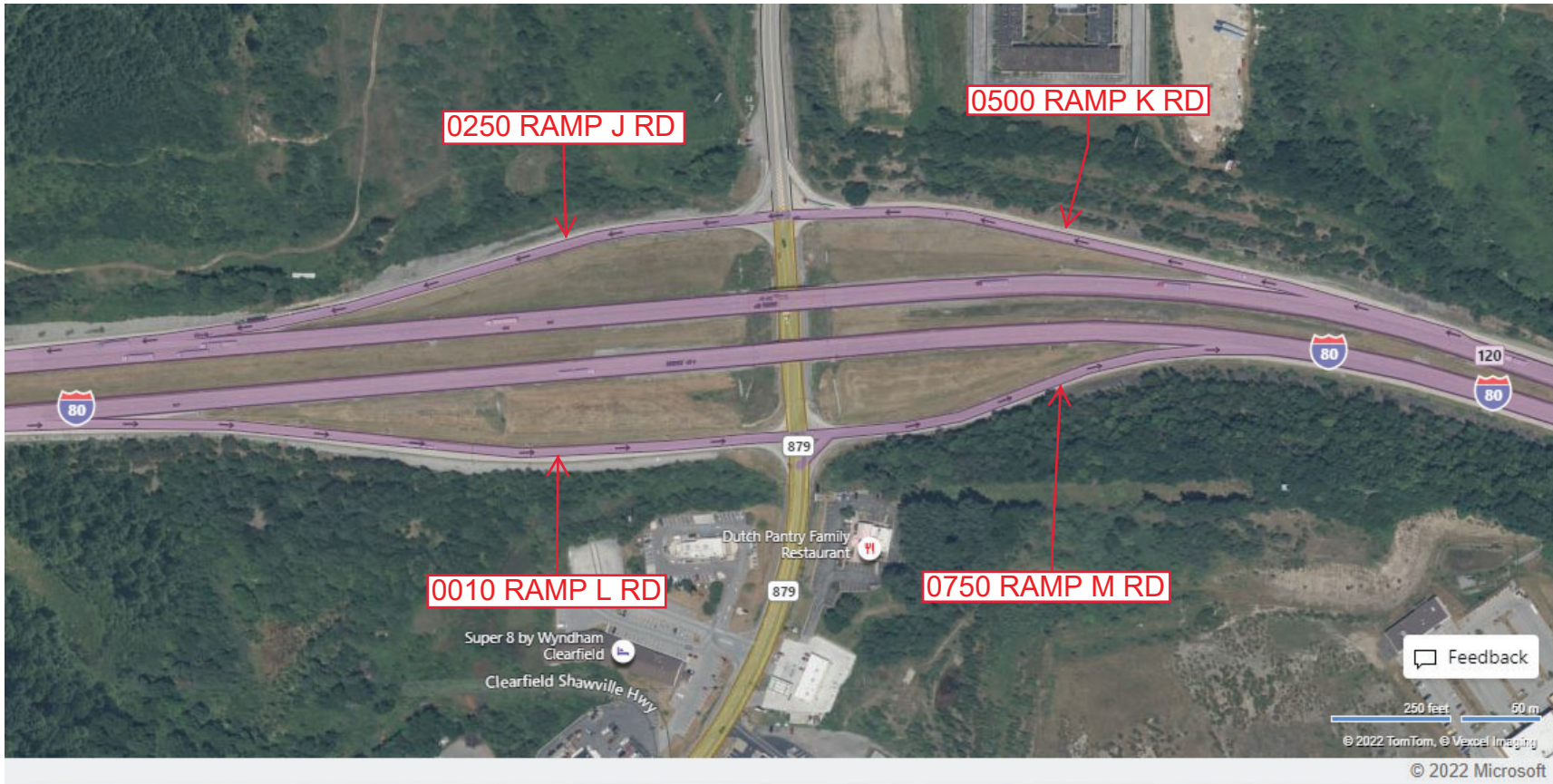
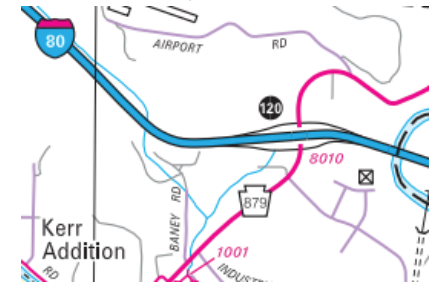
Ramp Segment Number and Ramp Segment Length Information:

Segment	Length	Segment	Length	Segment	Length	Segment	Length
0010	1364						
0250	1105						
0500	1002						
0750	0796						

Primary Route Interchange Exit Number: 120

Secondary Route Interchange Exit Number

PennDOT Type 10 Map View:



Last Date Modified: Dec 7, 2022



County: 17

# RMS Interchange Information

Print Form

Interchange Number: 8012

Bureau of Maintenance & Operations  
Asset Management Division



Interchange Name: WOODLAND INT

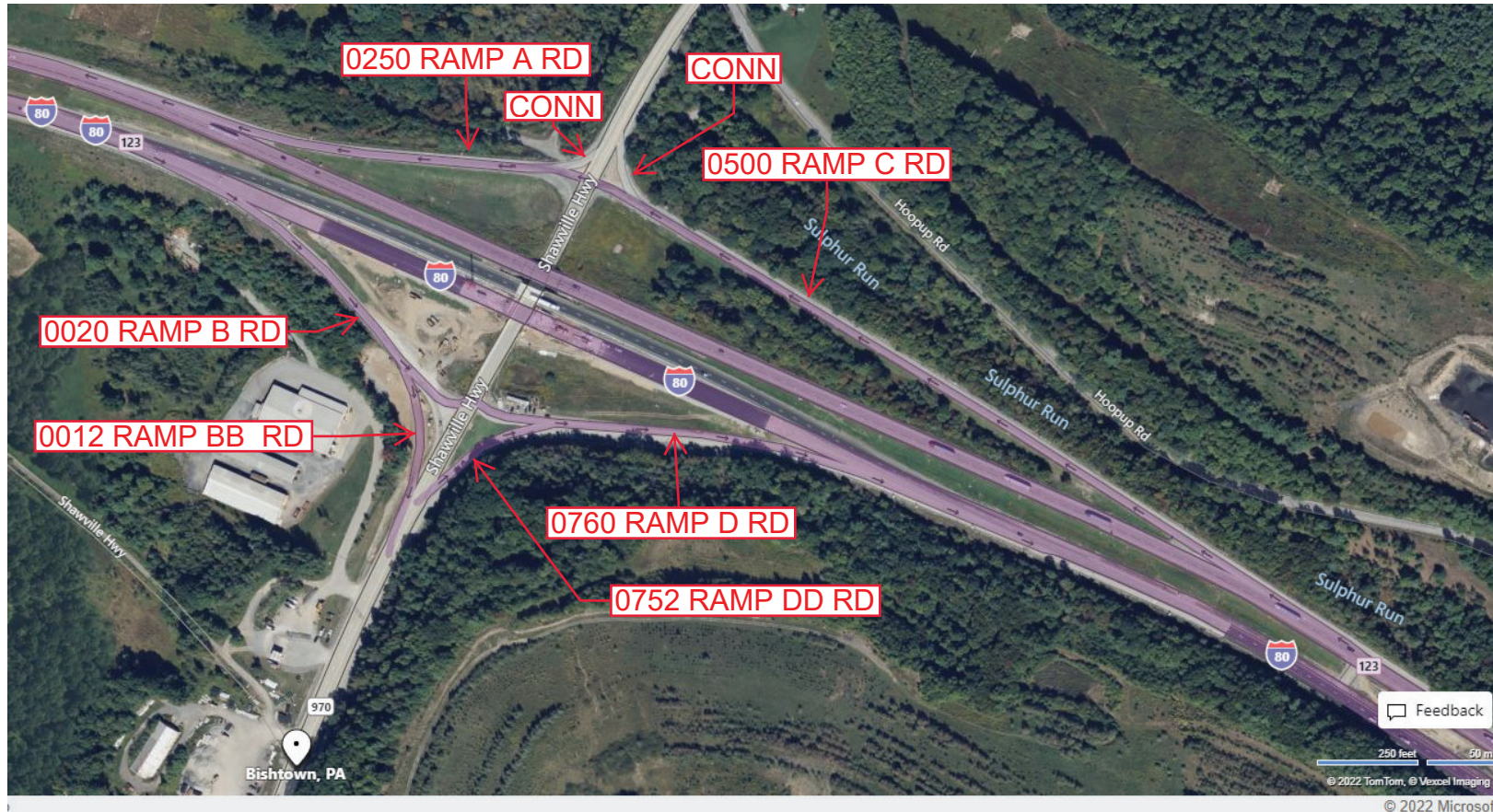
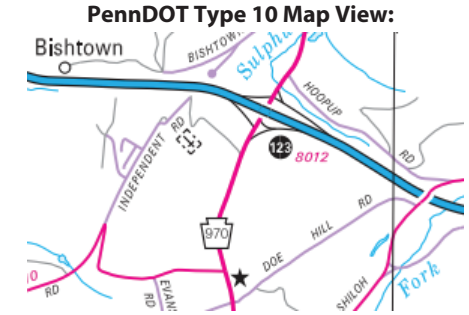
Intersecting SR's: I-80 & PA 970

Ramp Segment Number and Ramp Segment Length Information:

Segment	Length	Segment	Length	Segment	Length	Segment	Length
0012	0222	0760	0892				
0020	0689						
0250	0852						
0500	1808						
0752	0200						

Primary Route Interchange Exit Number: 123

Secondary Route Interchange Exit Number



Last Date Modified:

Dec 13, 2022



County: 17

# RMS Interchange Information

Print Form

Interchange Number: 8014

Bureau of Maintenance & Operations  
Asset Management Division



Interchange Name: KYLERTOWN INT

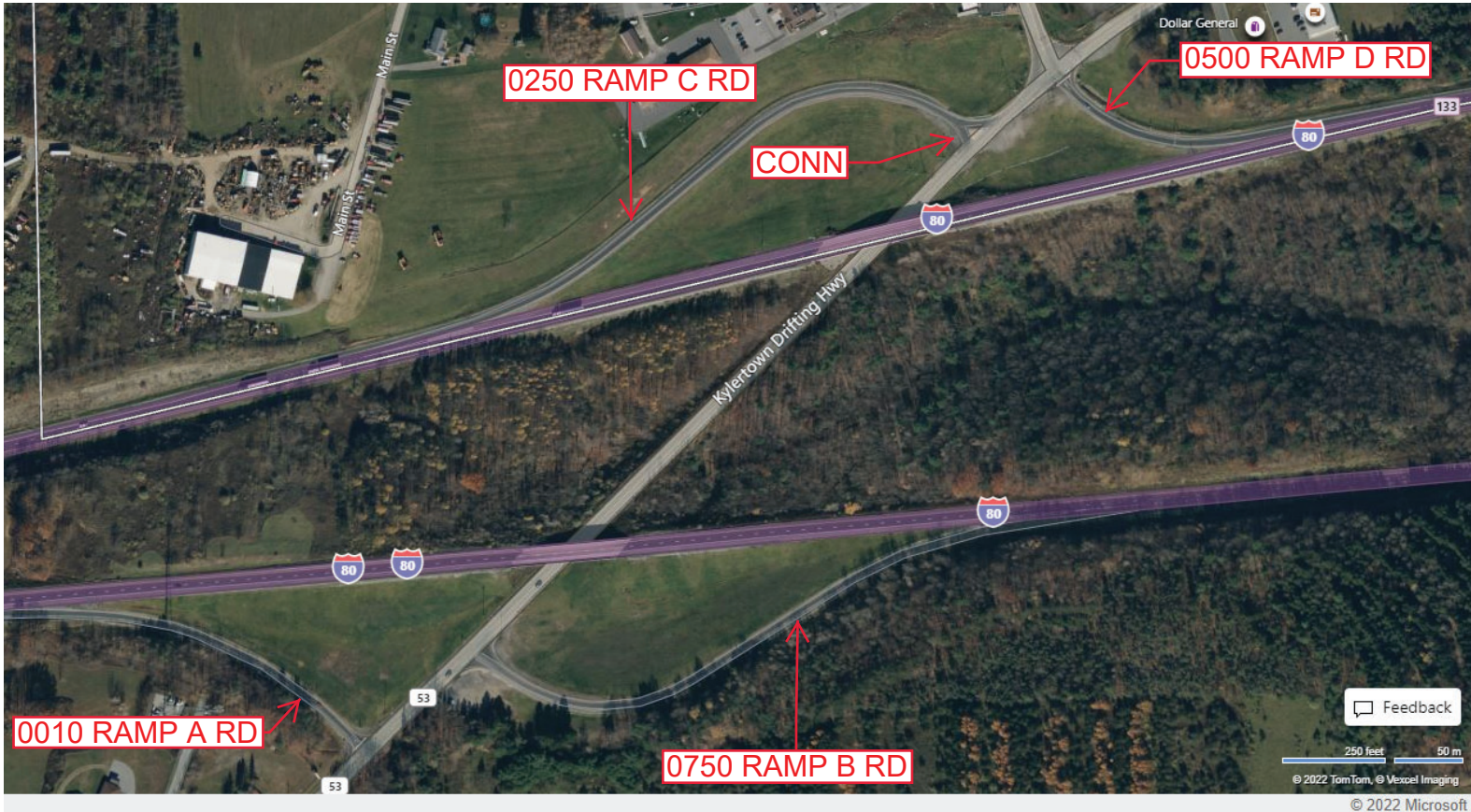
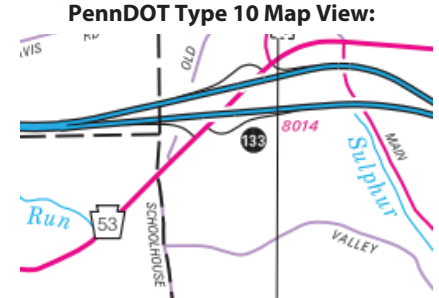
Intersecting SR's: I-80 & PA 53 Allport To Kylertown Hw

Ramp Segment Number and Ramp Segment Length Information:

Segment	Length	Segment	Length	Segment	Length	Segment	Length
0010	0834						
0250	1447						
0500	0398						
0750	1379						

Primary Route Interchange Exit Number: 133

Secondary Route Interchange Exit Number



Last Date Modified: Dec 8, 2022



County: 17

# RMS Interchange Information

Print Form

Interchange Number: 8016

Bureau of Maintenance & Operations  
Asset Management Division



Interchange Name: CLEARFIELD MALL INT

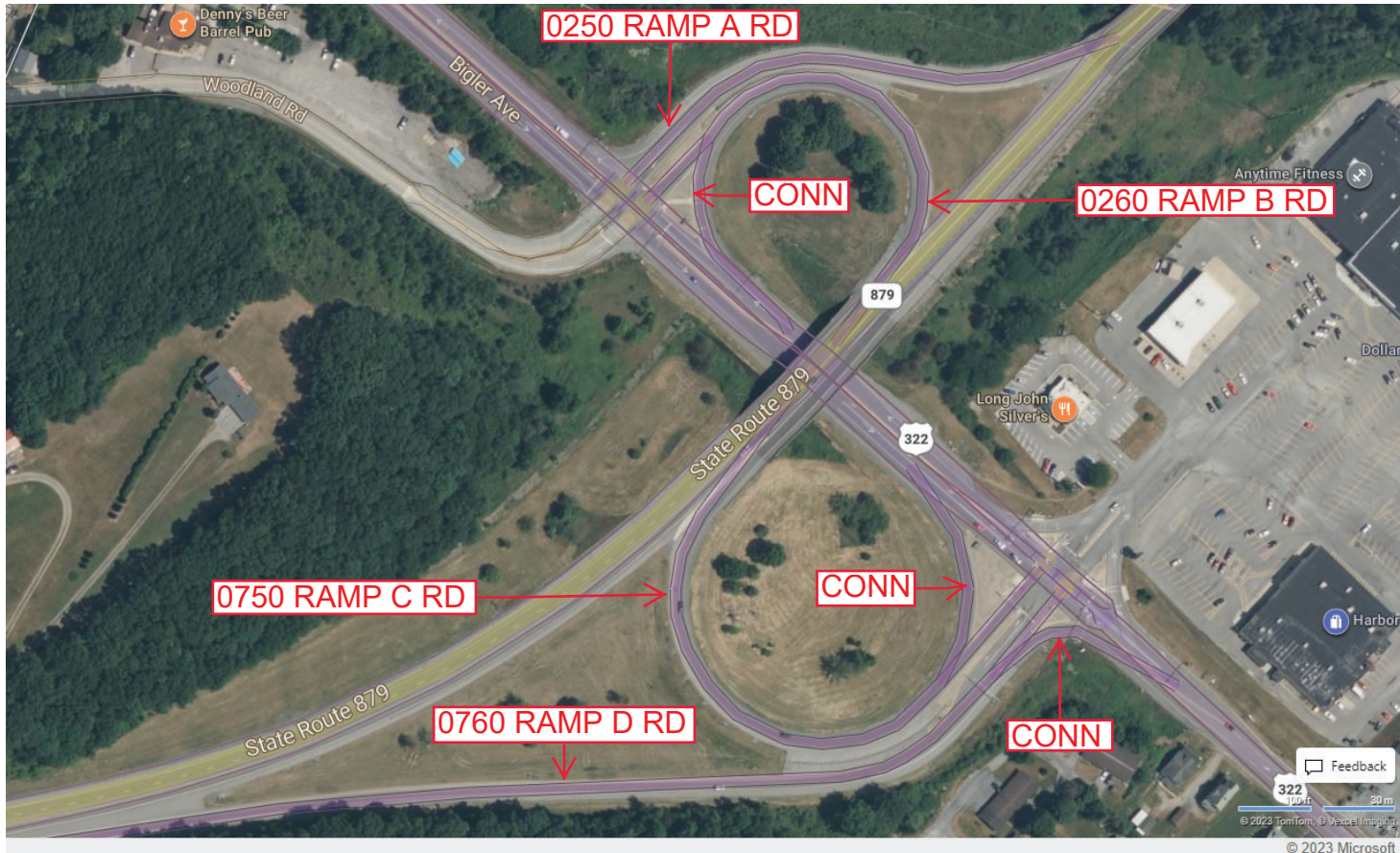
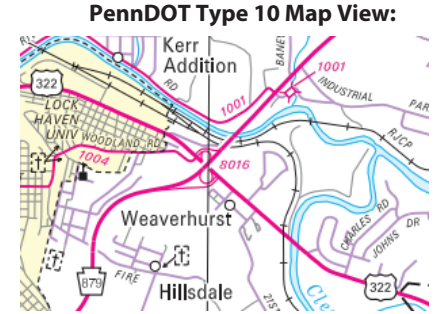
Intersecting SR's: US 322, PA 978 & SR 1004 Woodland Rd

Ramp Segment Number and Ramp Segment Length Information:

Segment	Length	Segment	Length	Segment	Length	Segment	Length
0250	0659						
0260	0567						
0750	0967						
0760	1287						

Primary Route Interchange Exit Number

Secondary Route Interchange Exit Number



Last Date Modified: Aug 4, 2023



County: 17

# RMS Interchange Information

Print Form

Interchange Number: 9101

Bureau of Maintenance & Operations  
Asset Management Division



Interchange Name: TWENTY EIGHTH DIVISION INT

Intersecting SR's: US 322, & US 119 Blinker Py

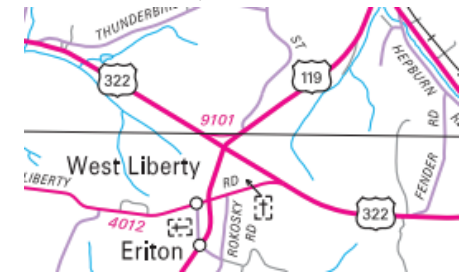
Ramp Segment Number and Ramp Segment Length Information:

Segment	Length	Segment	Length	Segment	Length	Segment	Length
0500	0247						

Primary Route Interchange Exit Number

Secondary Route Interchange Exit Number

PennDOT Type 10 Map View:



Feedback

100 feet 25 m

© 2022 TomTom, © Vexcel Imaging

© 2022 Microsoft

Last Date Modified:

Dec 8, 2022



County: 17

# RMS Interchange Information

Print Form

Interchange Number: **9103**

Bureau of Maintenance & Operations  
Asset Management Division



Interchange Name: **BUFFALO/PITTSBURGH HW**

Intersecting SR's: **US 119 Blinker Py & US 219 Salem to Dubios Rd**

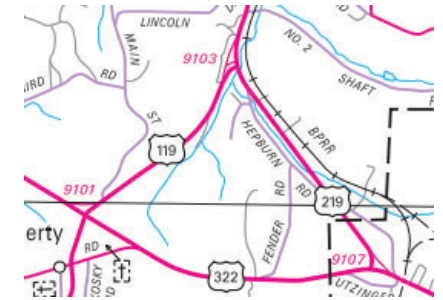
Ramp Segment Number and Ramp Segment Length Information:

Segment	Length	Segment	Length	Segment	Length	Segment	Length
<b>0250</b>	<b>0613</b>						

Primary Route  
Interchange Exit  
Number

Secondary Route  
Interchange Exit  
Number

PennDOT Type 10 Map View:



Feedback

250 feet 50 m

© 2022 TomTom, © 2022 Maxar

© 2022 Microsoft

Last Date Modified:

Dec 8, 2022



County: 17

# RMS Interchange Information

Print Form

Interchange Number: 9107

Bureau of Maintenance & Operations  
Asset Management Division



Interchange Name: CARSON HILL RD WYE

Intersecting SR's: US 219 Carson Hill Rd & US 322 Watson Hw

Ramp Segment Number and Ramp Segment Length Information:

Segment	Length	Segment	Length	Segment	Length	Segment	Length
0010	0278						

Primary Route Interchange Exit Number

Secondary Route Interchange Exit Number

PennDOT Type 10 Map View:





County: 17

# RMS Interchange Information

Bureau of Maintenance & Operations  
Asset Management Division

Print Form



Interchange Number: 9109

Interchange Name: ALLPORT CUTOFF RD WYE

Intersecting SR's: PA 53 & SR 2030 Allport Cutof Rd

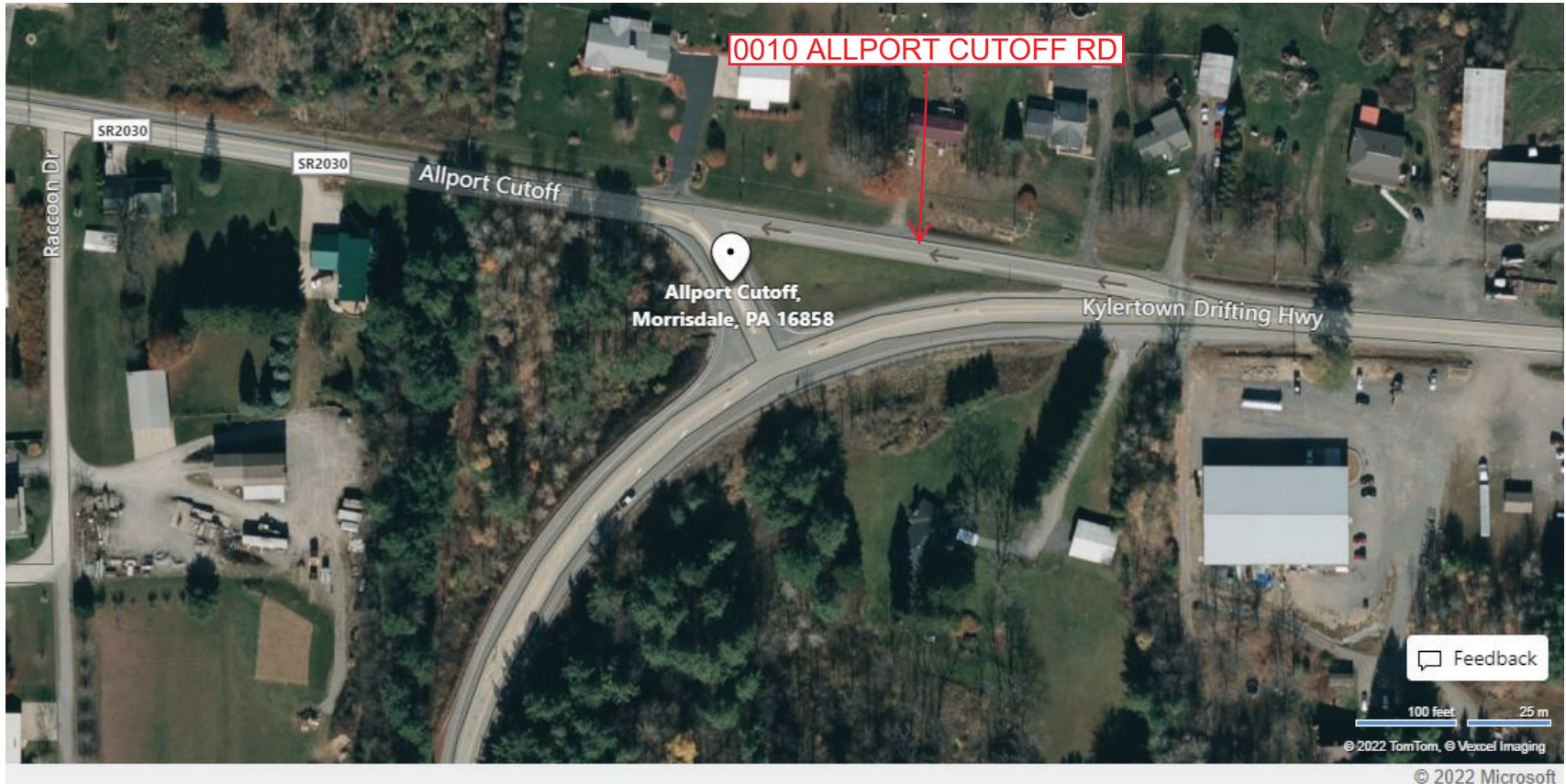
Ramp Segment Number and Ramp Segment Length Information:

Segment	Length	Segment	Length	Segment	Length	Segment	Length
0010	0333						

Primary Route Interchange Exit Number

Secondary Route Interchange Exit Number

PennDOT Type 10 Map View:



Last Date Modified: Dec 9, 2022



County: 17

# RMS Interchange Information

Print Form

Interchange Number: 9110

Bureau of Maintenance & Operations  
Asset Management Division



Interchange Name: 28TH DIVISION & SR 153

Intersecting SR's: US 322 Twenty Eighth Division Hw & PA 153

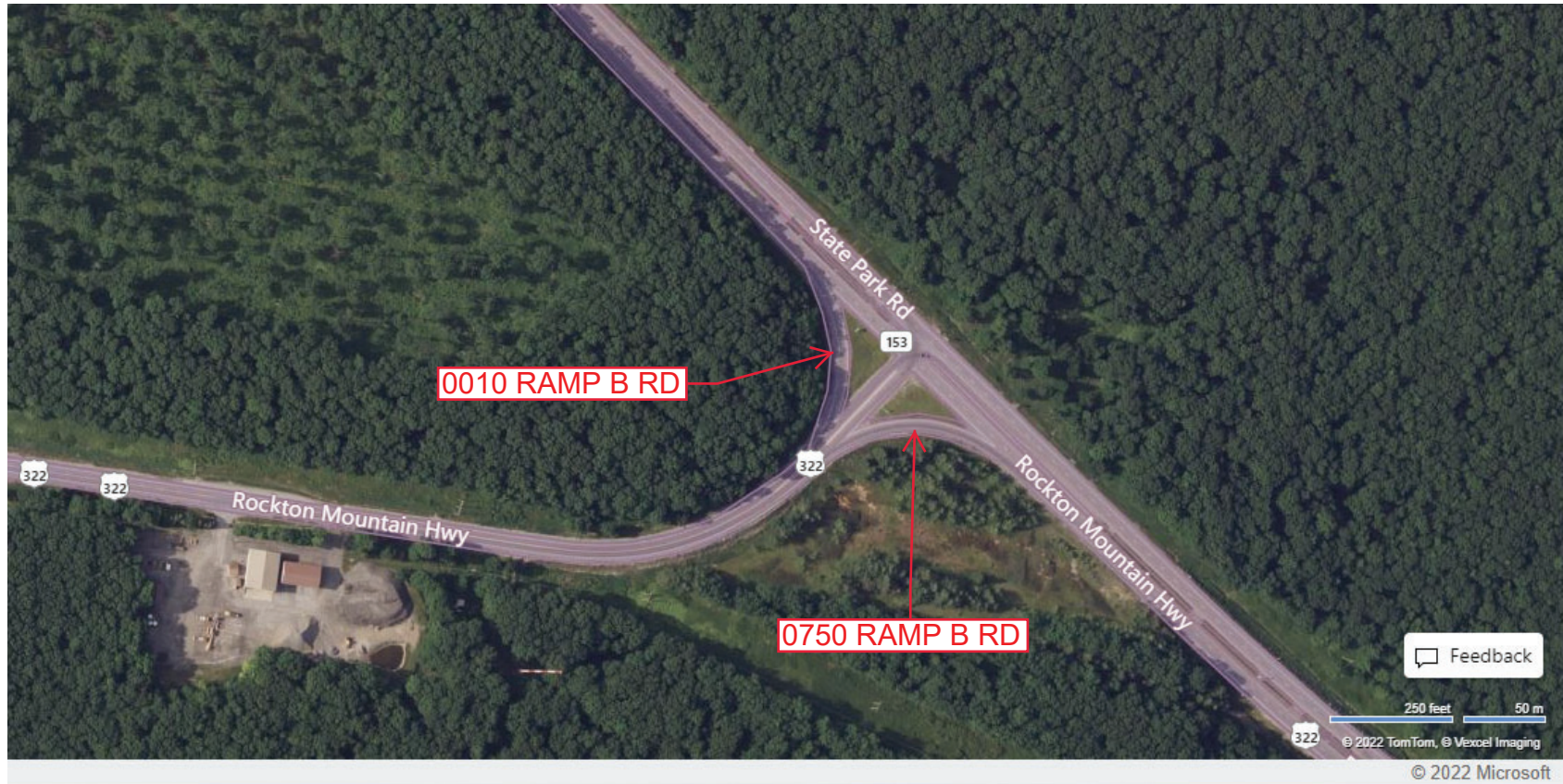
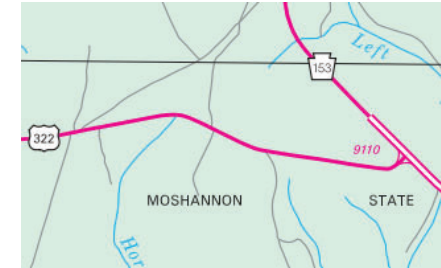
Ramp Segment Number and Ramp Segment Length Information:

Segment	Length	Segment	Length	Segment	Length	Segment	Length
0010	0244						
0750	0258						

Primary Route Interchange Exit Number

Secondary Route Interchange Exit Number

PennDOT Type 10 Map View:



Last Date Modified: Dec 9, 2022



County: 17

# RMS Interchange Information

Print Form

Interchange Number: 9111

Bureau of Maintenance & Operations  
Asset Management Division



Interchange Name: FALLS CREEK

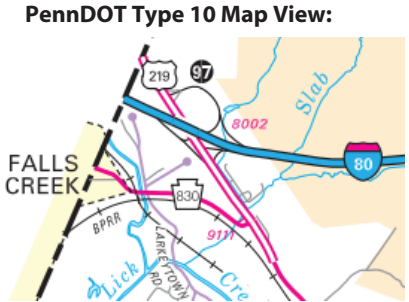
Intersecting SR's: US 219 Buffalo Pittsburgh Hw & PA 830 Slab Run Rd

Ramp Segment Number and Ramp Segment Length Information:

Segment	Length	Segment	Length	Segment	Length	Segment	Length
0010	0220						

Primary Route Interchange Exit Number

Secondary Route Interchange Exit Number



Feedback

100 feet 25 m  
© 2022 TomTom, © Vexcel Imaging

© 2022 Microsoft

Last Date Modified: Dec 12, 2022



County: 17

# RMS Interchange Information

Print Form

Interchange Number: 9112

Bureau of Maintenance & Operations  
Asset Management Division



Interchange Name: MOUNT ZION

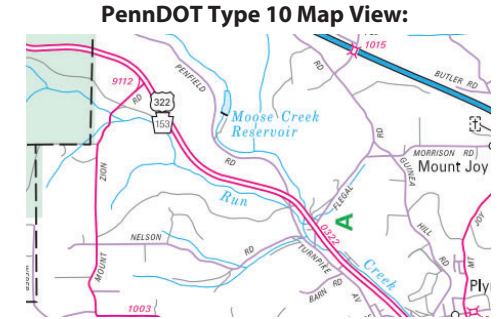
Intersecting SR's: US 322 Twenty Eighth Division Hw & SR 1003 Mt Zion Rd

Ramp Segment Number and Ramp Segment Length Information:

Segment	Length	Segment	Length	Segment	Length	Segment	Length
0010	0245						

Primary Route Interchange Exit Number

Secondary Route Interchange Exit Number



Feedback  
100 feet 25 m  
© 2022 TomTom, © Vexcel Imaging  
© 2022 Microsoft

Last Date Modified: Dec 12, 2022



County: 17

# RMS Interchange Information

Print Form

Interchange Number: 9114

Bureau of Maintenance & Operations  
Roadway Management Division



Interchange Name:

Intersecting SR's: SR 2027/SR 2030

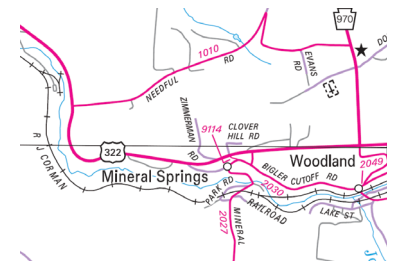
Ramp Segment Number and Ramp Segment Length Information:

Segment	Length	Segment	Length	Segment	Length	Segment	Length
0010	0039						

Primary Route Interchange Exit Number

Secondary Route Interchange Exit Number

PennDOT Type 10 Map View:



Last Date Modified: Aug 19, 2020



County: 17

# RMS Interchange Information

Print Form

Interchange Number: 9402

Bureau of Maintenance & Operations  
Roadway Management Division



Interchange Name: PA 879 SERVICE ROAD

Intersecting SR's: T250 Spruce St

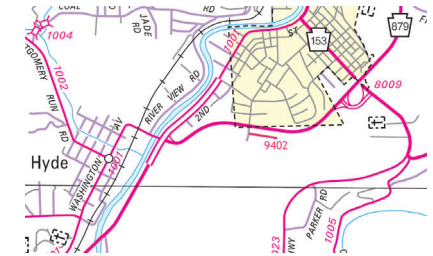
Ramp Segment Number and Ramp Segment Length Information:

Segment	Length	Segment	Length	Segment	Length	Segment	Length
0010	0946						

Primary Route  
Interchange Exit  
Number

Secondary Route  
Interchange Exit  
Number

PennDOT Type 10 Map View:



Last Date Modified:

Aug 19, 2020