

County: 18

# RMS Interchange Information

Print Form

Bureau of Maintenance & Operations  
Asset Management Division



Interchange Number: 8001

Interchange Name: SALONA INT

Intersecting SR's: US 220 & PA 477 Main St

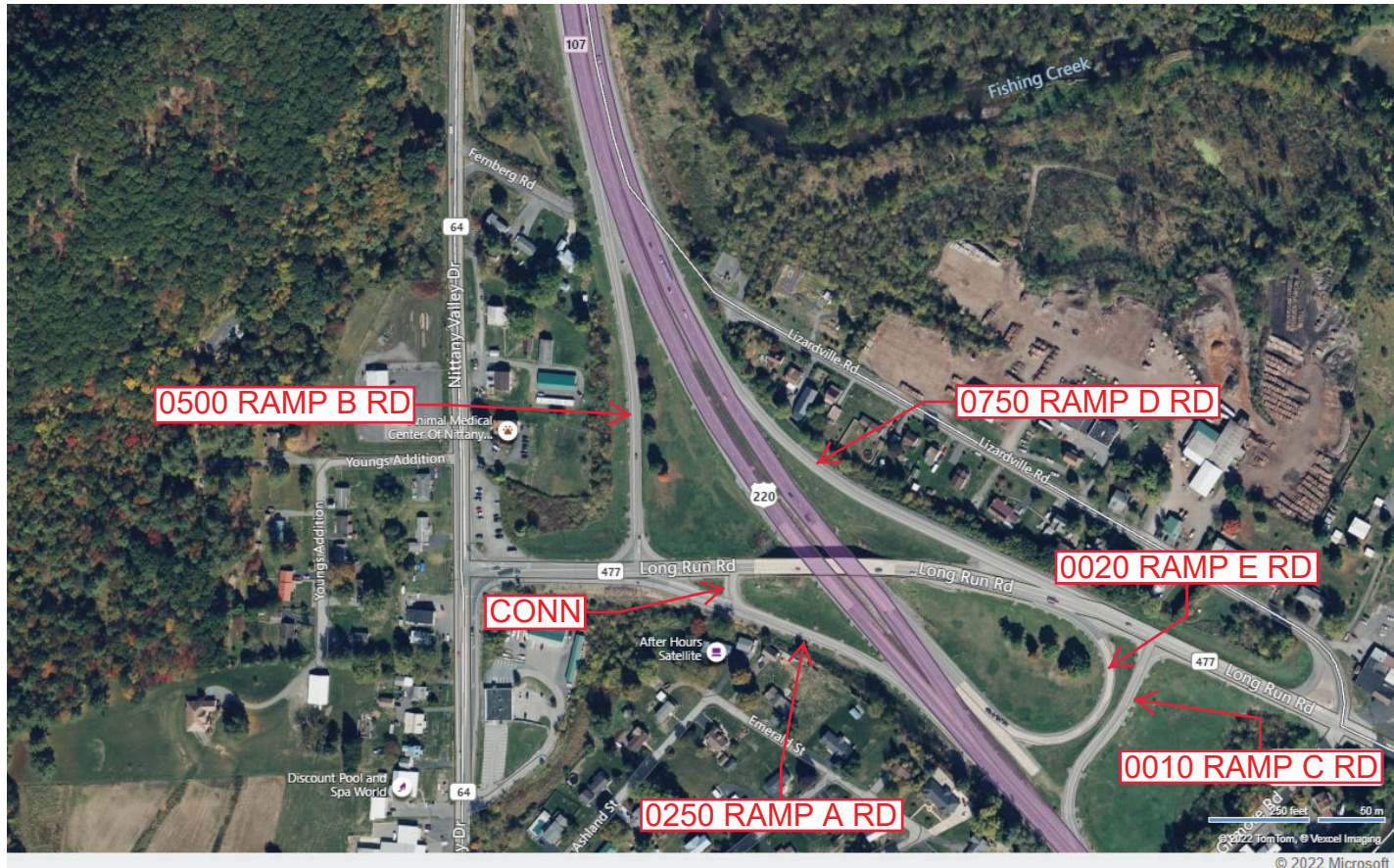
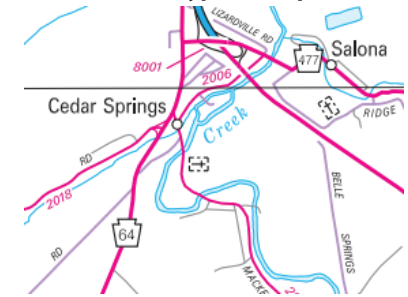
Ramp Segment Number and Ramp Segment Length Information:

Segment	Length	Segment	Length	Segment	Length	Segment	Length
0010	0507						
0020	0689						
0250	0617						
0500	0835						
0750	0799						

Primary Route Interchange Exit Number

Secondary Route Interchange Exit Number

PennDOT Type 10 Map View:



Last Date Modified:

Dec 12, 2022

County: 18

# RMS Interchange Information

Print Form

Interchange Number: 8003

Bureau of Maintenance & Operations  
Asset Management Division



Interchange Name: MILL HALL INT

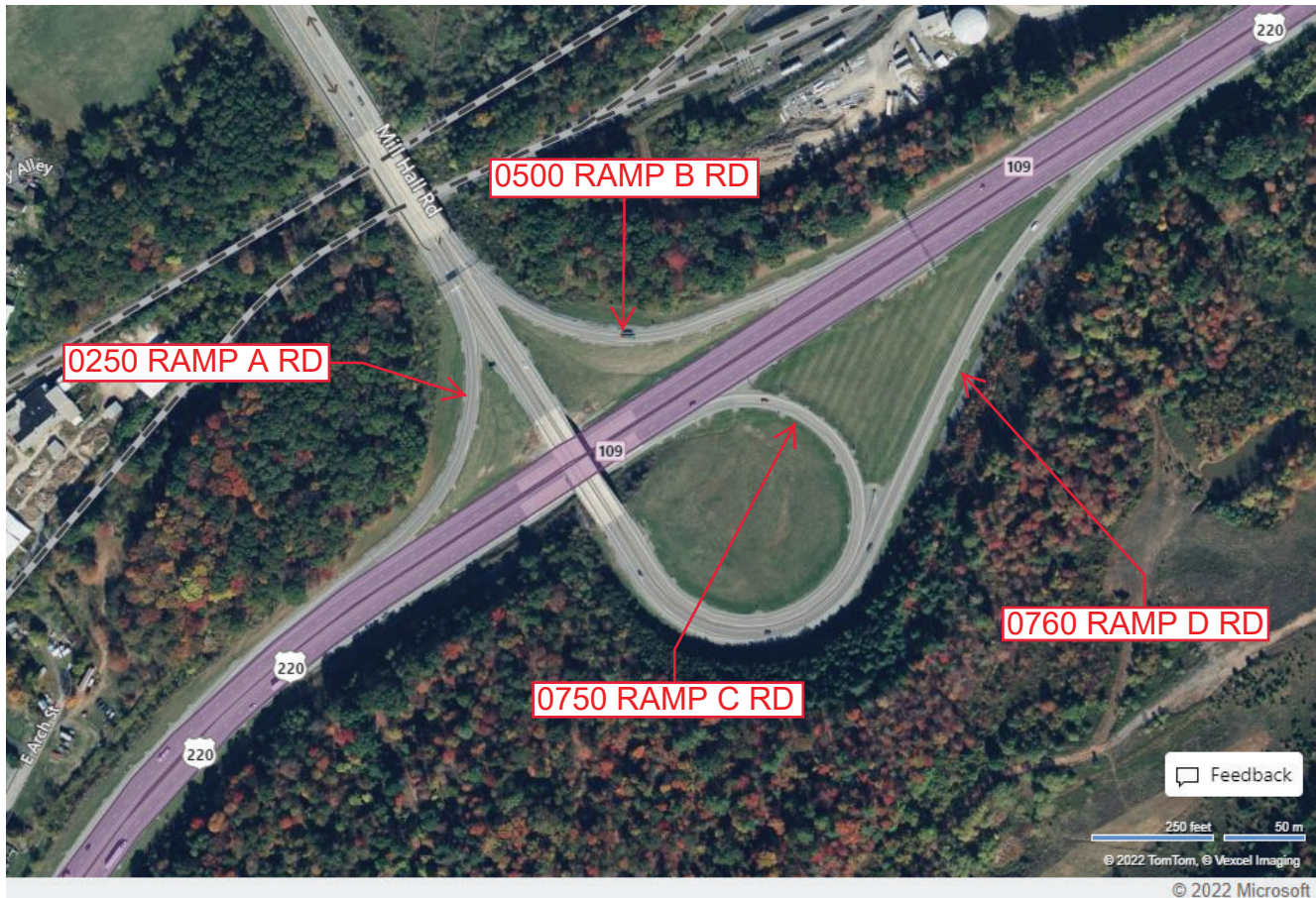
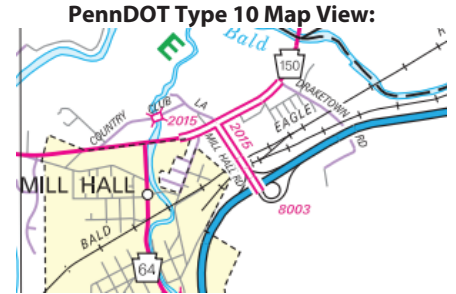
Intersecting SR's: US 220 & SR 2015 Mill Hall Rd

Ramp Segment Number and Ramp Segment Length Information:

Segment	Length	Segment	Length	Segment	Length	Segment	Length
0250	0526						
0500	0716						
0750	1176						
0760	1719						

Primary Route Interchange Exit Number: 109

Secondary Route Interchange Exit Number



Feedback

250 feet 50 m

© 2022 TomTom, © Vexcel Imaging

© 2022 Microsoft

Last Date Modified: Dec 13, 2022

County: 18

# RMS Interchange Information

Print Form

Interchange Number: 8004

Bureau of Maintenance & Operations  
Asset Management Division



Interchange Name: LAMAR INT

Intersecting SR's: I-80 & PA 64

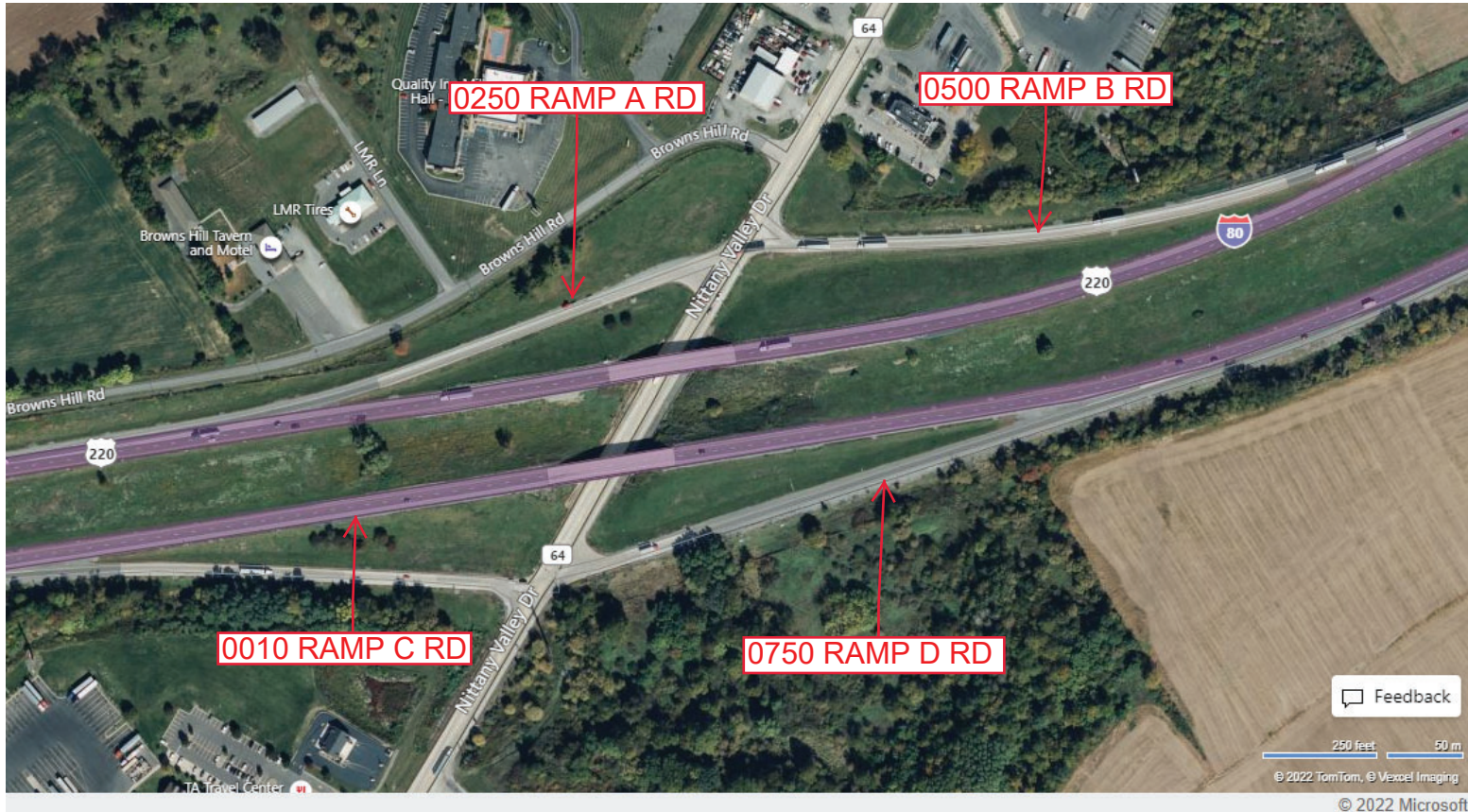
Ramp Segment Number and Ramp Segment Length Information:

Segment	Length	Segment	Length	Segment	Length	Segment	Length
0010	1130						
0250	1037						
0500	1428						
0750	1295						

Primary Route Interchange Exit Number: 173

Secondary Route Interchange Exit Number

PennDOT Type 10 Map View:



Feedback

250 feet 50 m

© 2022 TomTom, © Vexcel Imaging

© 2022 Microsoft

Last Date Modified:

Dec 13, 2022

County: 18

# RMS Interchange Information

Print Form

Interchange Number: 8005

Bureau of Maintenance & Operations  
Asset Management Division



Interchange Name: CASTENEA INT

Intersecting SR's: US 220, PA 120 & SR 2012 Paul Mack BI

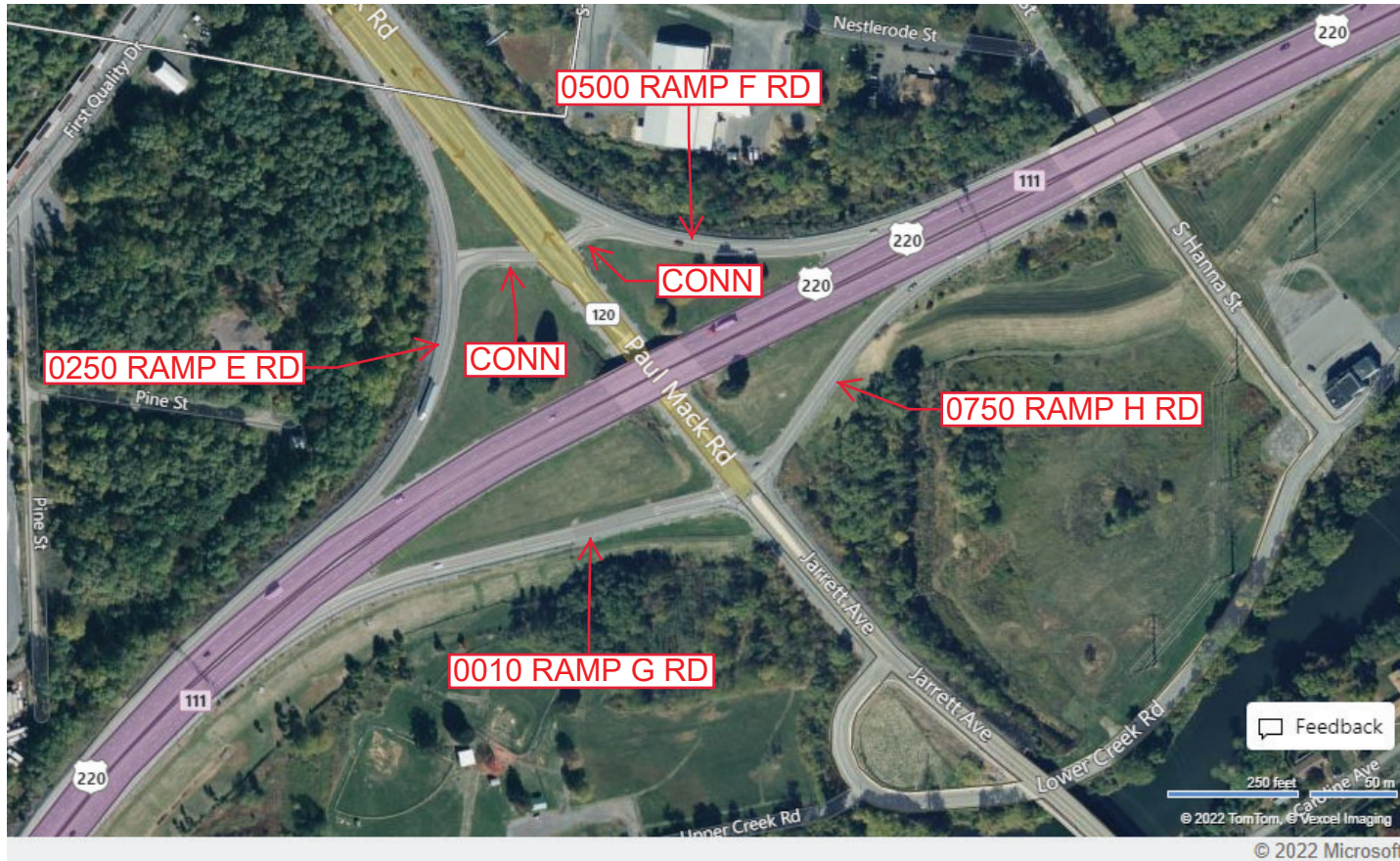
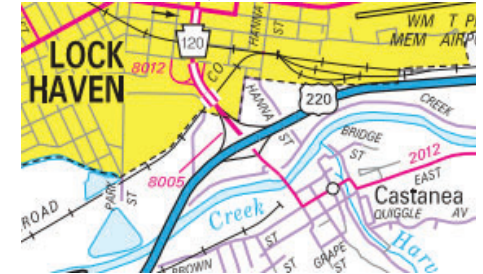
Ramp Segment Number and Ramp Segment Length Information:

Segment	Length	Segment	Length	Segment	Length	Segment	Length
0010	0778						
0250	0776						
0500	0669						
0750	0480						

Primary Route Interchange Exit Number: 111

Secondary Route Interchange Exit Number

PennDOT Type 10 Map View:



Feedback

© 2022 TomTom, © Vexcel Imaging

© 2022 Microsoft

Last Date Modified:

Dec 14, 2022

County: 18

# RMS Interchange Information

Print Form

Interchange Number: 8006

Bureau of Maintenance & Operations  
Asset Management Division



Interchange Name: LOCK HAVEN INT

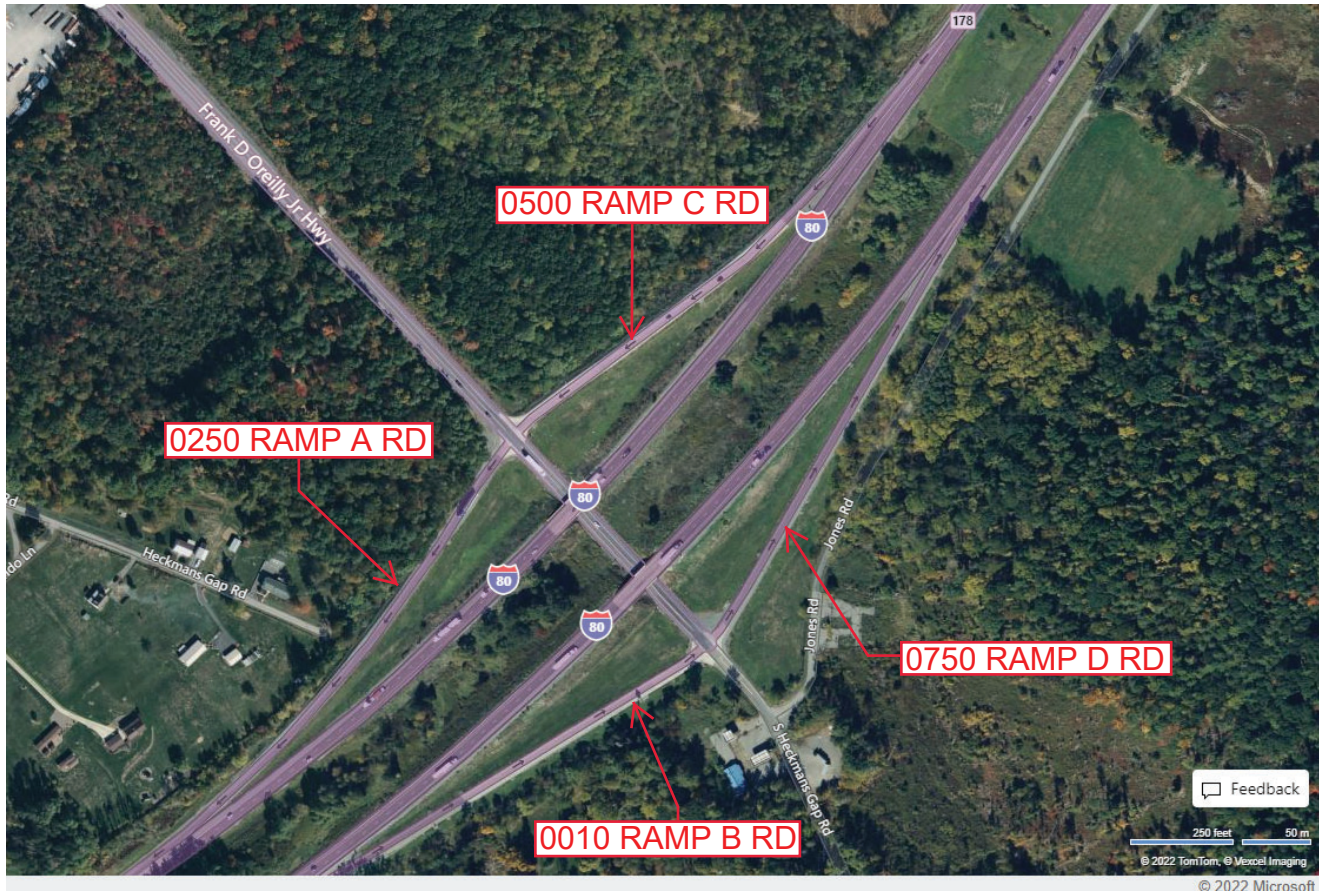
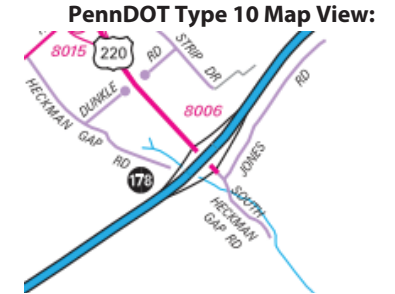
Intersecting SR's: I-80 & US 220

Ramp Segment Number and Ramp Segment Length Information:

Segment	Length	Segment	Length	Segment	Length	Segment	Length
0010	1113						
0250	1196						
0500	1062						
0750	1094						

Primary Route Interchange Exit Number: 178

Secondary Route Interchange Exit Number



Feedback

250 feet 50 m  
© 2022 TomTom, © Moxel Imaging  
© 2022 Microsoft

Last Date Modified:

Dec 14, 2022

County: 18

# RMS Interchange Information

Print Form

Interchange Number: 8007

Bureau of Maintenance & Operations  
Asset Management Division



Interchange Name: MC ELHATTEN INT

Intersecting SR's: US 220 & SR 1005 McElhatten Dr

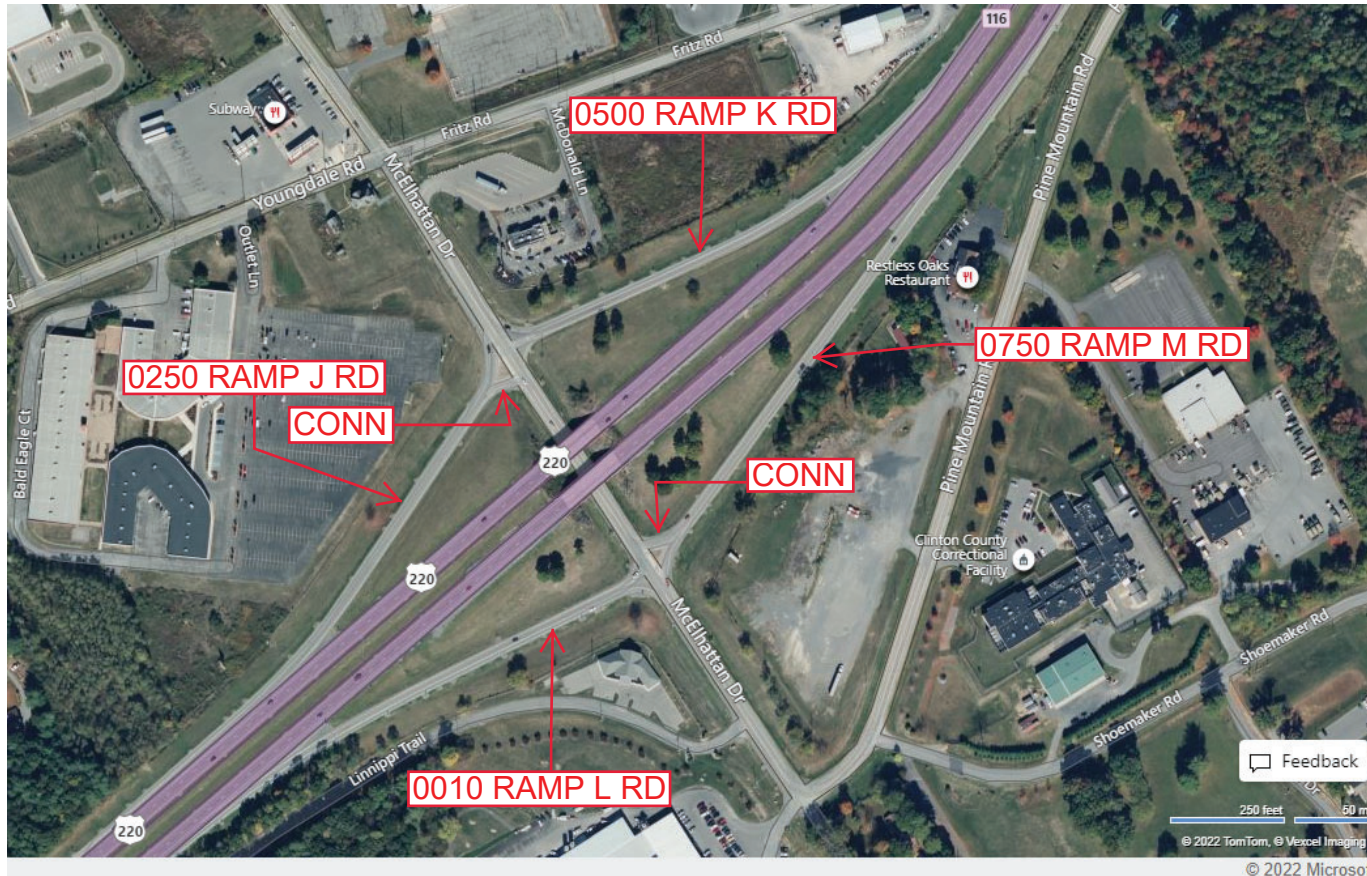
Ramp Segment Number and Ramp Segment Length Information:

Segment	Length	Segment	Length	Segment	Length	Segment	Length
0010	0870						
0250	0817						
0500	0850						
0750	0994						

Primary Route Interchange Exit Number: 116

Secondary Route Interchange Exit Number

PennDOT Type 10 Map View:



Last Date Modified:

Dec 14, 2022

County: 18

# RMS Interchange Information

Print Form

Interchange Number: 8008

Bureau of Maintenance & Operations  
Asset Management Division



Interchange Name: LOGANTON INT

Intersecting SR's: I-80 & PA 477

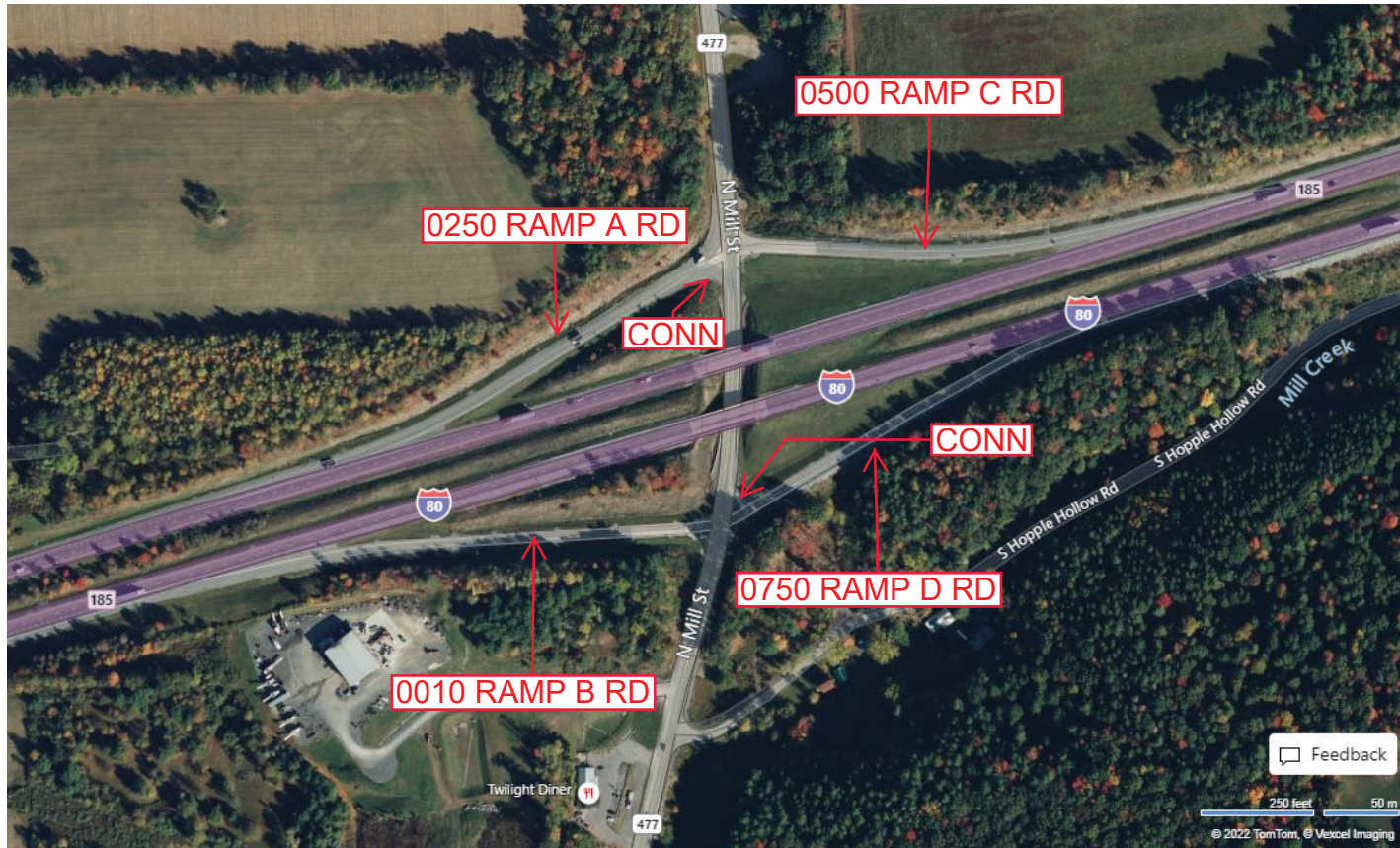
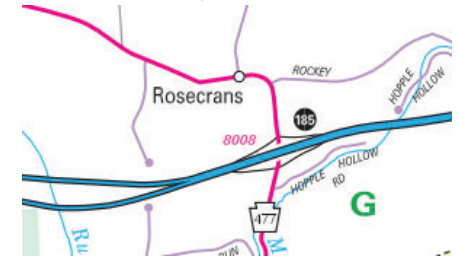
Ramp Segment Number and Ramp Segment Length Information:

Segment	Length	Segment	Length	Segment	Length	Segment	Length
0010	0965						
0250	0855						
0500	0824						
0750	0831						

Primary Route Interchange Exit Number: 185

Secondary Route Interchange Exit Number

PennDOT Type 10 Map View:



Feedback

© 2022 TomTom, © Vexcel Imaging

© 2022 Microsoft

Last Date Modified:

Dec 14, 2022

County: 18

# RMS Interchange Information

Print Form

Interchange Number: 8009

Bureau of Maintenance & Operations  
Asset Management Division



Interchange Name: AVIS INT

Intersecting SR's: US 220, PA 150 Woodward Av & T300 Avis Exit Rd

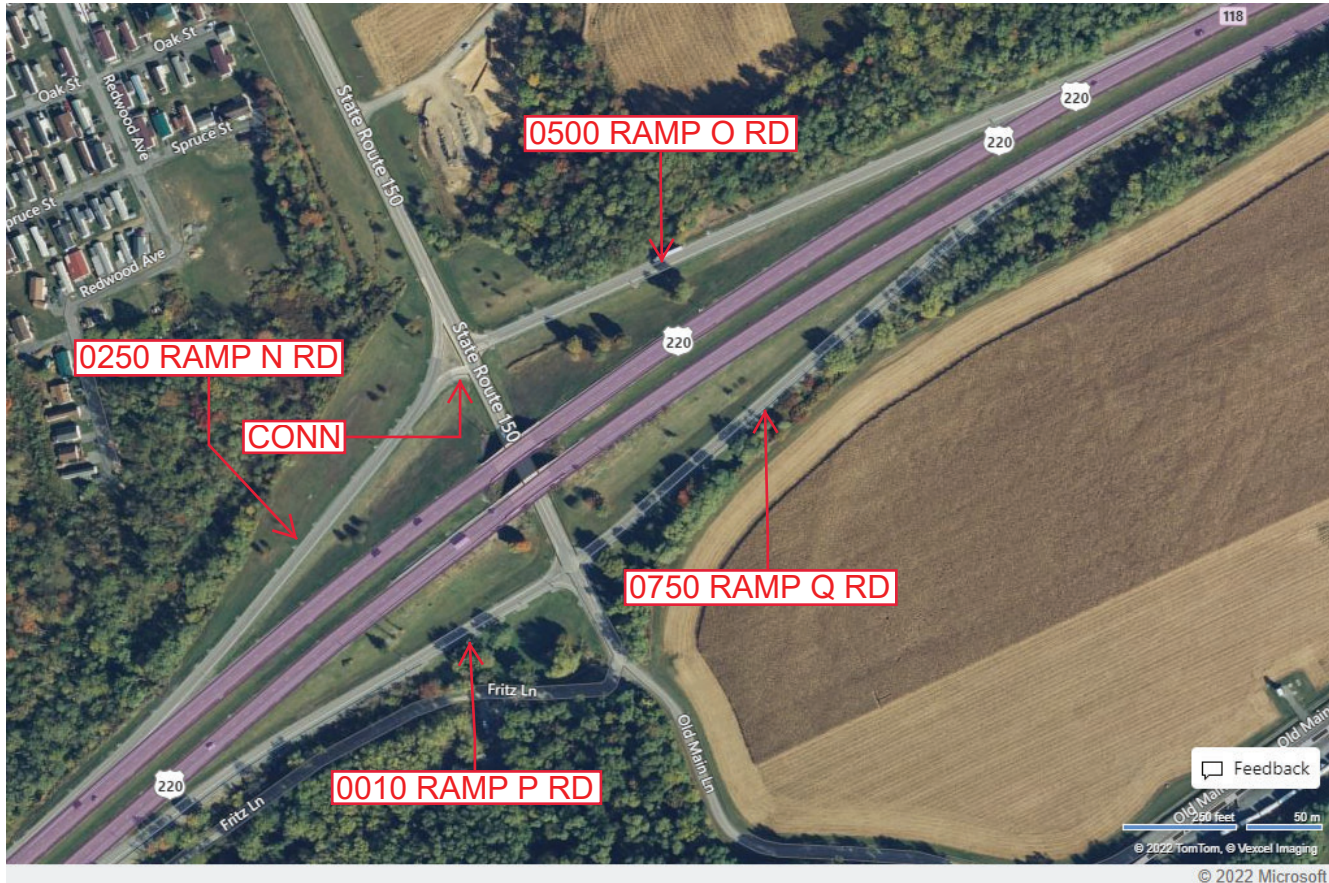
Ramp Segment Number and Ramp Segment Length Information:

Segment	Length	Segment	Length	Segment	Length	Segment	Length
0010	1037						
0250	1093						
0500	1398						
0750	1267						

Primary Route Interchange Exit Number: 118

Secondary Route Interchange Exit Number

PennDOT Type 10 Map View:



Feedback

© 2022 TomTom, © Vexcel Imaging

© 2022 Microsoft

Last Date Modified: Dec 14, 2022



County: 18

# RMS Interchange Information

Print Form

Bureau of Maintenance & Operations  
Asset Management Division



Interchange Number: 8010

Interchange Name: JERSEY SHORE

Intersecting SR's: I-80 & SR 2002 Tea Springs Rd

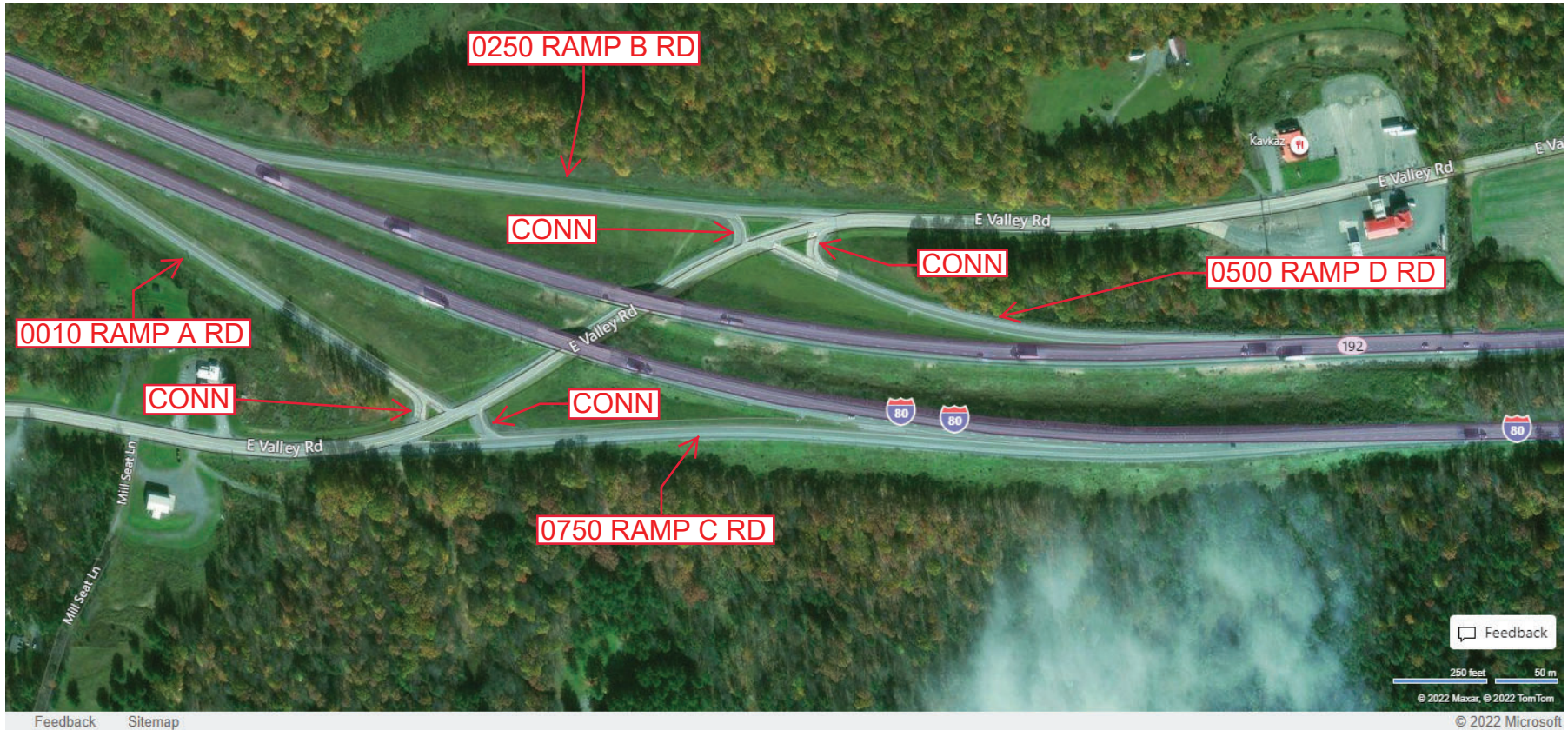
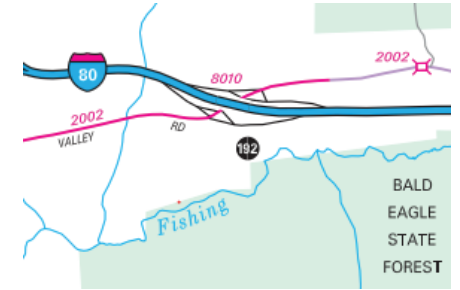
Ramp Segment Number and Ramp Segment Length Information:

Segment	Length	Segment	Length	Segment	Length	Segment	Length
0010	1389						
0250	1581						
0500	1079						
0750	1345						

Primary Route Interchange Exit Number: 192

Secondary Route Interchange Exit Number

PennDOT Type 10 Map View:



Last Date Modified: Mar 16, 2022

County: 18

# RMS Interchange Information

Print Form

Bureau of Maintenance & Operations  
Asset Management Division



Interchange Number: 8012

Interchange Name: WALNUT STREET INT

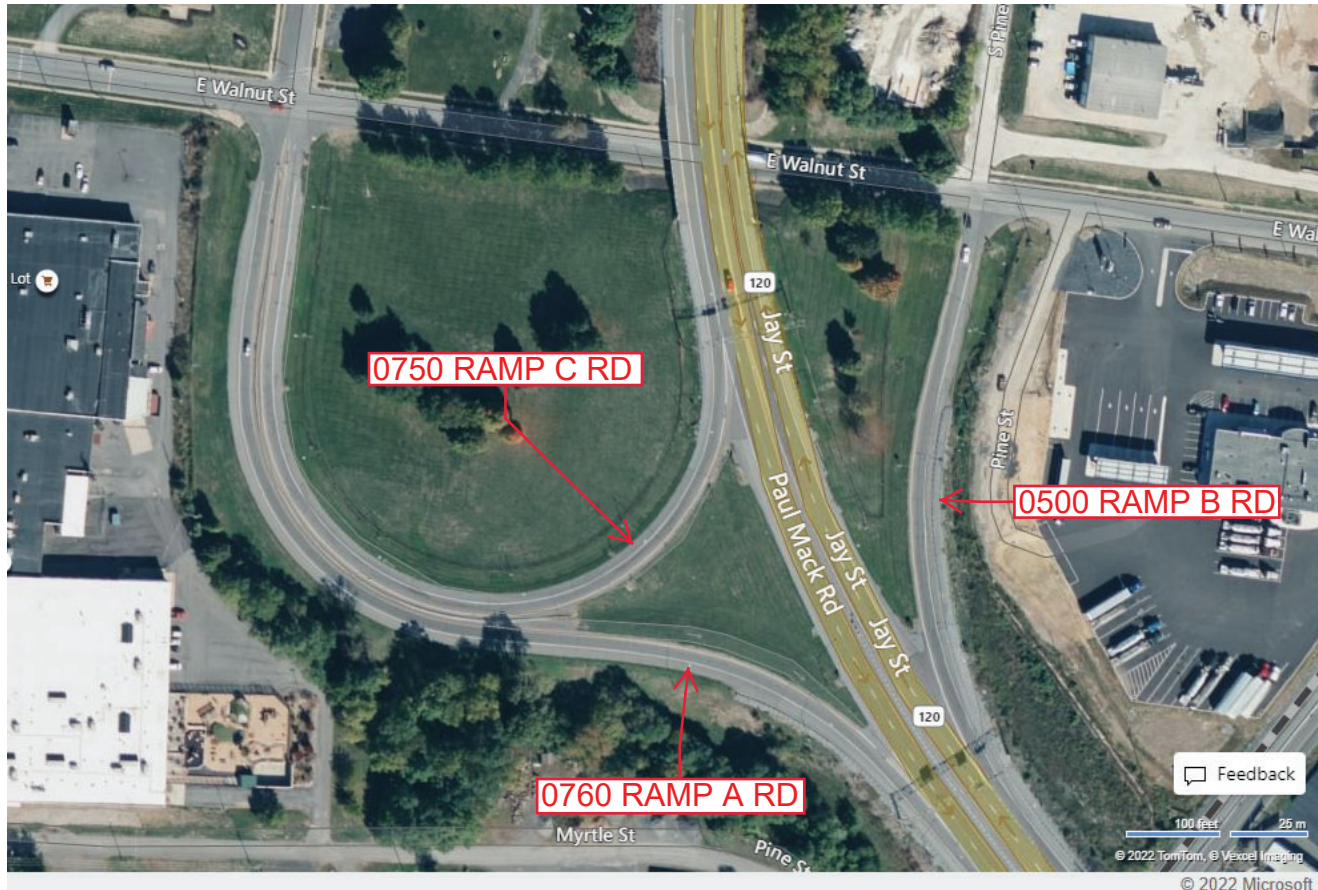
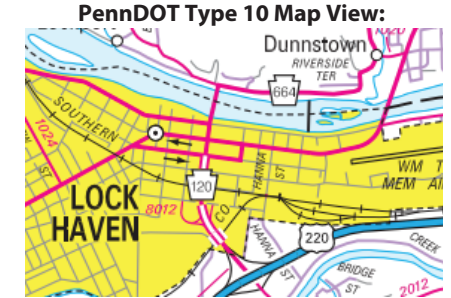
Intersecting SR's: PA 120 Paul Mack Rd CITY Walnut St & CITY Grove St

Ramp Segment Number and Ramp Segment Length Information:

Segment	Length	Segment	Length	Segment	Length	Segment	Length
0500	0493						
0750	1024						
0760	1165						

Primary Route  
Interchange Exit  
Number

Secondary Route  
Interchange Exit  
Number



Feedback

100 Feet 25 m  
© 2022 TomTom, © Vexxel Imaging

© 2022 Microsoft

Last Date Modified:

Dec 14, 2022

County: 18

# RMS Interchange Information

Print Form

Interchange Number: 8013

Bureau of Maintenance & Operations  
Asset Management Division



Interchange Name: PINE CREEK INT

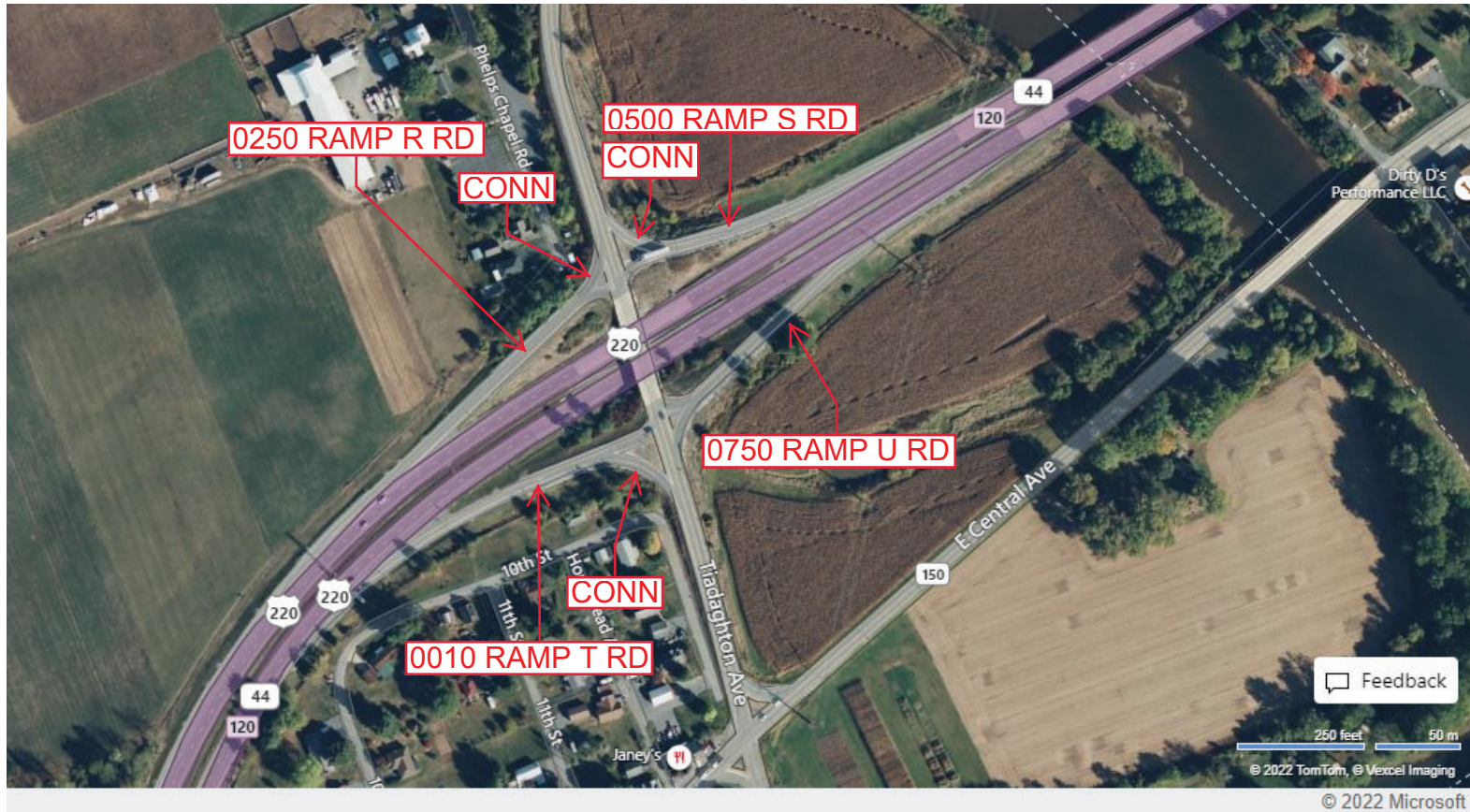
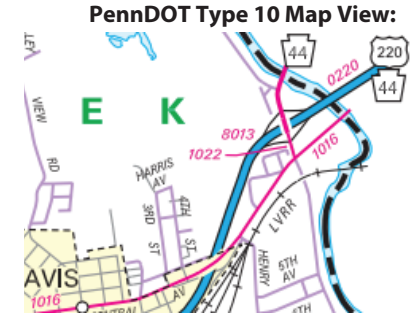
Intersecting SR's: US 220, PA 44 & SR 1022 Pine Creek Rd

Ramp Segment Number and Ramp Segment Length Information:

Segment	Length	Segment	Length	Segment	Length	Segment	Length
0010	0509						
0250	0443						
0500	0384						
0750	0435						

Primary Route Interchange Exit Number: 120

Secondary Route Interchange Exit Number



Last Date Modified: Dec 15, 2022

County: 18

# RMS Interchange Information

Print Form

Interchange Number: 8015

Bureau of Maintenance & Operations  
Asset Management Division



Interchange Name: AUCTION RD INT

Intersecting SR's: US 220 & SR 2008 Auction Rd

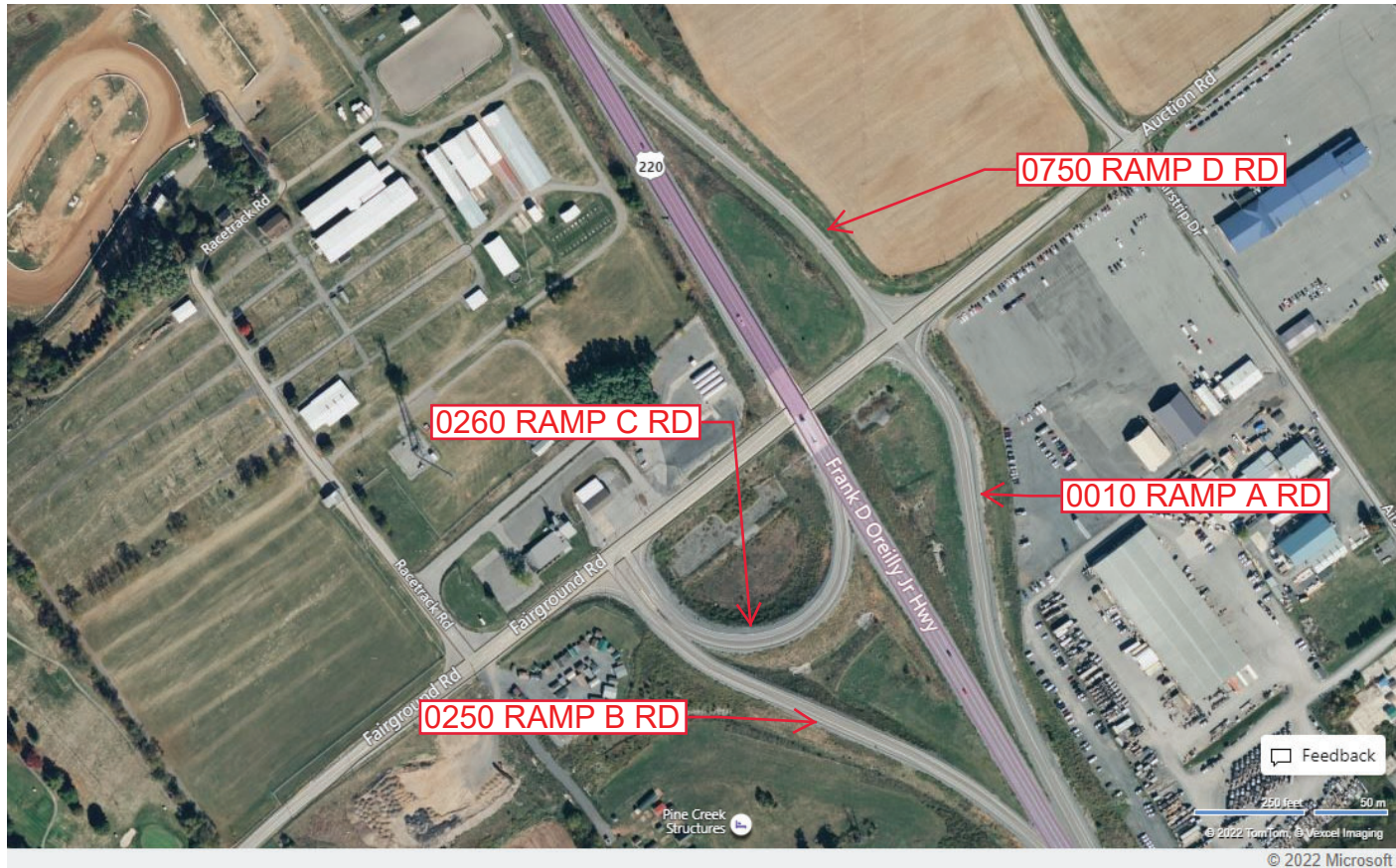
Ramp Segment Number and Ramp Segment Length Information:

Segment	Length	Segment	Length	Segment	Length	Segment	Length
0010	1340						
0250	1240						
0260	0750						
0750	0900						

Primary Route Interchange Exit Number

Secondary Route Interchange Exit Number

PennDOT Type 10 Map View:



County: 18

# RMS Interchange Information

Print Form

Interchange Number: 9203

Bureau of Maintenance & Operations  
Asset Management Division



Interchange Name: GREENE TWP I-80 WB REST AREA

Intersecting SR's: I-80 Confair Memorial Hw

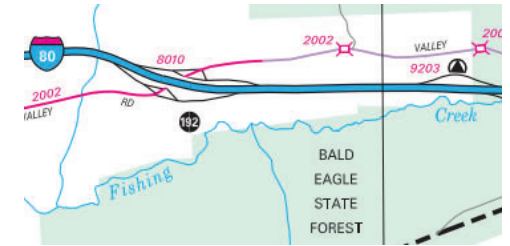
Ramp Segment Number and Ramp Segment Length Information:

Segment	Length	Segment	Length	Segment	Length	Segment	Length
0010	1880						
0020	0971						

Primary Route Interchange Exit Number

Secondary Route Interchange Exit Number

PennDOT Type 10 Map View:



Last Date Modified:

Dec 16, 2022

County: 18

# RMS Interchange Information

Print Form

Interchange Number: 9204

Bureau of Maintenance & Operations  
Asset Management Division



Interchange Name: GREENE TWP I-80 EB REST AREA

Intersecting SR's: I-80 Confair Memorial Hw

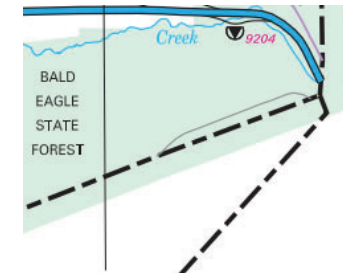
Ramp Segment Number and Ramp Segment Length Information:

Segment	Length	Segment	Length	Segment	Length	Segment	Length
0010	1603						
0020	0796						

Primary Route  
Interchange Exit  
Number

Secondary Route  
Interchange Exit  
Number

PennDOT Type 10 Map View:



Feedback

© 2022 TomTom, © Vexcel Imaging

© 2022 Microsoft

Last Date Modified:

Dec 16, 2022