

County: 34

RMS Interchange Information

Print Form

Interchange Number: 8002

Bureau of Maintenance & Operations
Asset Management Division



Interchange Name: ARCH ROCK INT

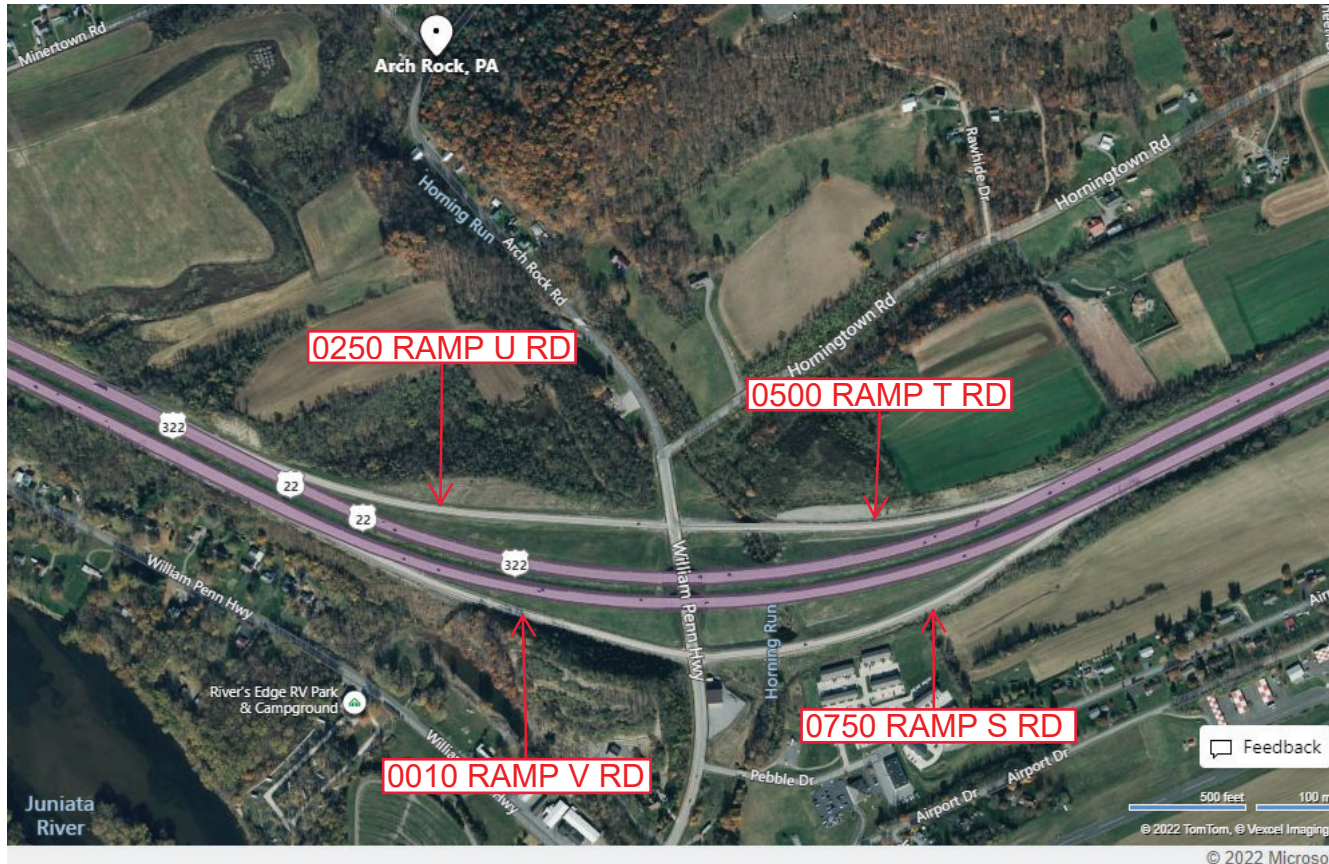
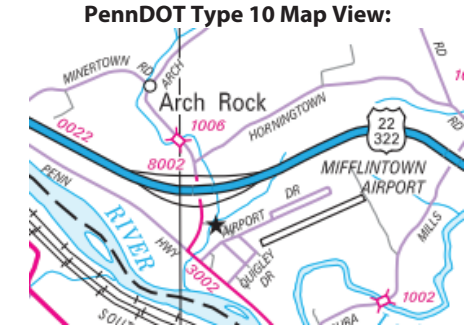
Intersecting SR's: US 22 & SR 3002 Old 22 Rd

Ramp Segment Number and Ramp Segment Length Information:

Segment	Length	Segment	Length	Segment	Length	Segment	Length
0010	1390						
0250	1719						
0500	1496						
0750	1730						

Primary Route Interchange Exit Number

Secondary Route Interchange Exit Number



Last Date Modified:

Dec 30, 2022

County: 34

RMS Interchange Information

Print Form

Interchange Number: 8004

Bureau of Maintenance & Operations
Asset Management Division



Interchange Name: MIFFLINTOWN INT

Intersecting SR's: US 22 & PA 35

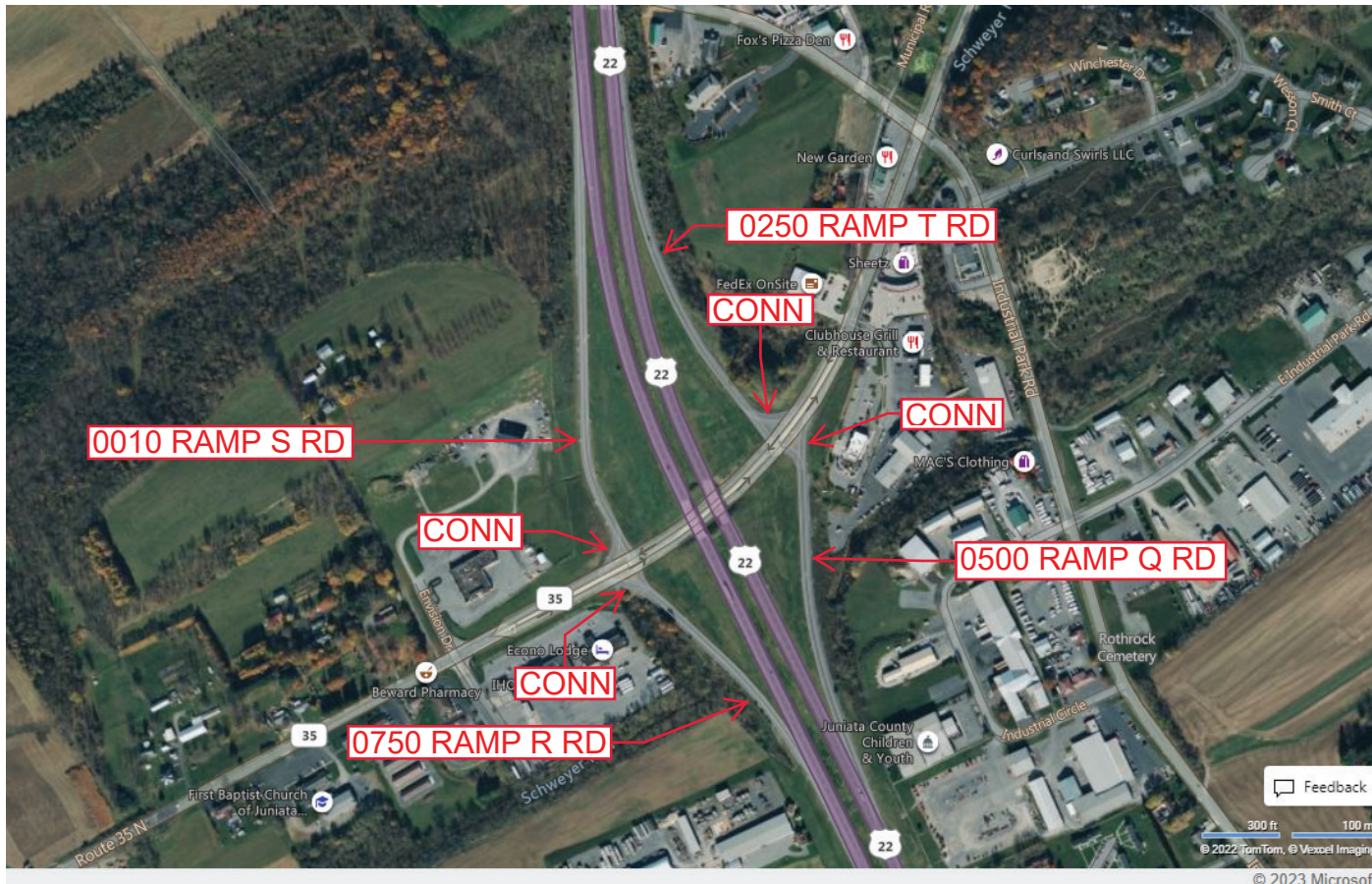
Ramp Segment Number and Ramp Segment Length Information:

Segment	Length	Segment	Length	Segment	Length	Segment	Length
0010	1593						
0250	1387						
0500	1245						
0750	0952						

Primary Route Interchange Exit Number

Secondary Route Interchange Exit Number

PennDOT Type 10 Map View:



Feedback
300 ft 100 m
© 2022 TomTom, © Vexxel Imaging
© 2023 Microsoft

Last Date Modified:

Feb 3, 2023

County: 34

RMS Interchange Information

Print Form

Bureau of Maintenance & Operations
Asset Management Division



Interchange Number: 8006

Interchange Name: PORT ROYAL INT

Intersecting SR's: US 22, PA 75 & SR 2001 Swamp Rd

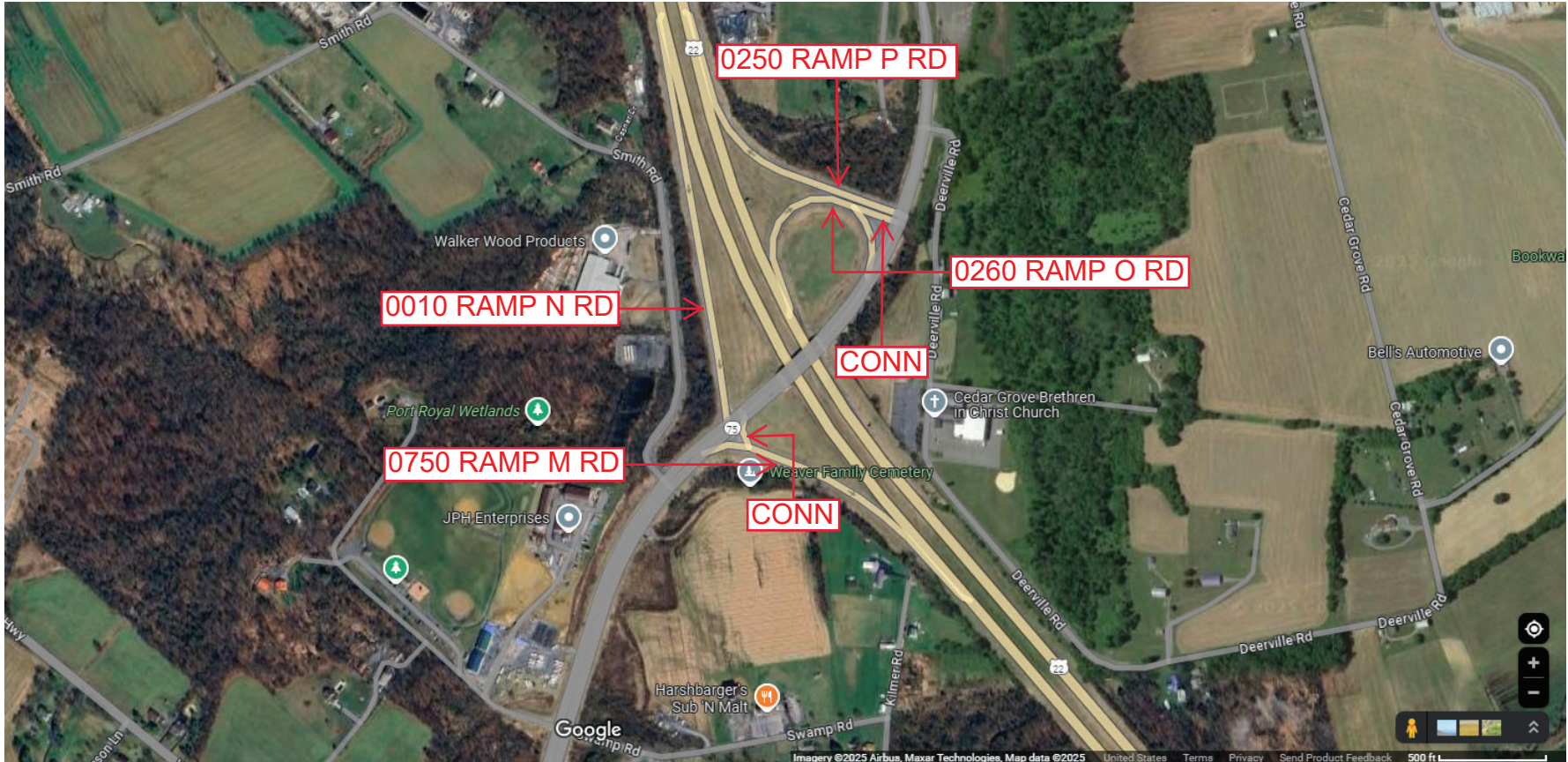
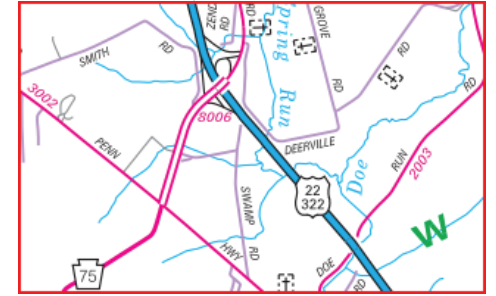
Ramp Segment Number and Ramp Segment Length Information:

Segment	Length	Segment	Length	Segment	Length	Segment	Length
0010	1546						
0250	1019						
0260	0797						
0750	0942						

Primary Route Interchange Exit Number

Secondary Route Interchange Exit Number

PennDOT Type 10 Map View:



Last Date Modified: Feb 12, 2025

County: 34

RMS Interchange Information

Print Form

Interchange Number: 8008

Bureau of Maintenance & Operations
Asset Management Division



Interchange Name: THOMPSONTOWN INT

Intersecting SR's: US 22 & PA 333

Ramp Segment Number and Ramp Segment Length Information:

Segment	Length	Segment	Length	Segment	Length	Segment	Length
0250	1840						
0500	1167						
0750	1318						
0760	1703						

Primary Route Interchange Exit Number

Secondary Route Interchange Exit Number

PennDOT Type 10 Map View:



Last Date Modified:

Feb 7, 2023

County: 34

RMS Interchange Information

Print Form

Interchange Number: 8010

Bureau of Maintenance & Operations
Asset Management Division



Interchange Name: PFOUTZ VALLEY INT

Intersecting SR's: US 22, SR 3002 Main St & T554 Pfoutz Valley Rd

Ramp Segment Number and Ramp Segment Length Information:

Segment	Length	Segment	Length	Segment	Length	Segment	Length
0010	0784						
0500	0788						

Primary Route Interchange Exit Number

Secondary Route Interchange Exit Number

PennDOT Type 10 Map View:



Feedback

© 2022 TomTom, © Vexcel Imaging

© 2023 Microsoft

Last Date Modified:

Feb 7, 2023

County: 34

RMS Interchange Information

Print Form

Interchange Number: 9401

Bureau of Maintenance & Operations
Asset Management Division



Interchange Name: JUGHANDLE RD

Intersecting SR's: US 11 Susquehanna Tr

Ramp Segment Number and Ramp Segment Length Information:

Segment	Length	Segment	Length	Segment	Length	Segment	Length
0010	0468						
0020	0376						

Primary Route Interchange Exit Number

Secondary Route Interchange Exit Number

PennDOT Type 10 Map View:



Last Date Modified: Feb 9, 2023

County: 34

RMS Interchange Information

Print Form

Interchange Number: 9402

Bureau of Maintenance & Operations
Asset Management Division



Interchange Name: DUWARD STATION RD

Intersecting SR's: PA 333 Van Dyke Rd

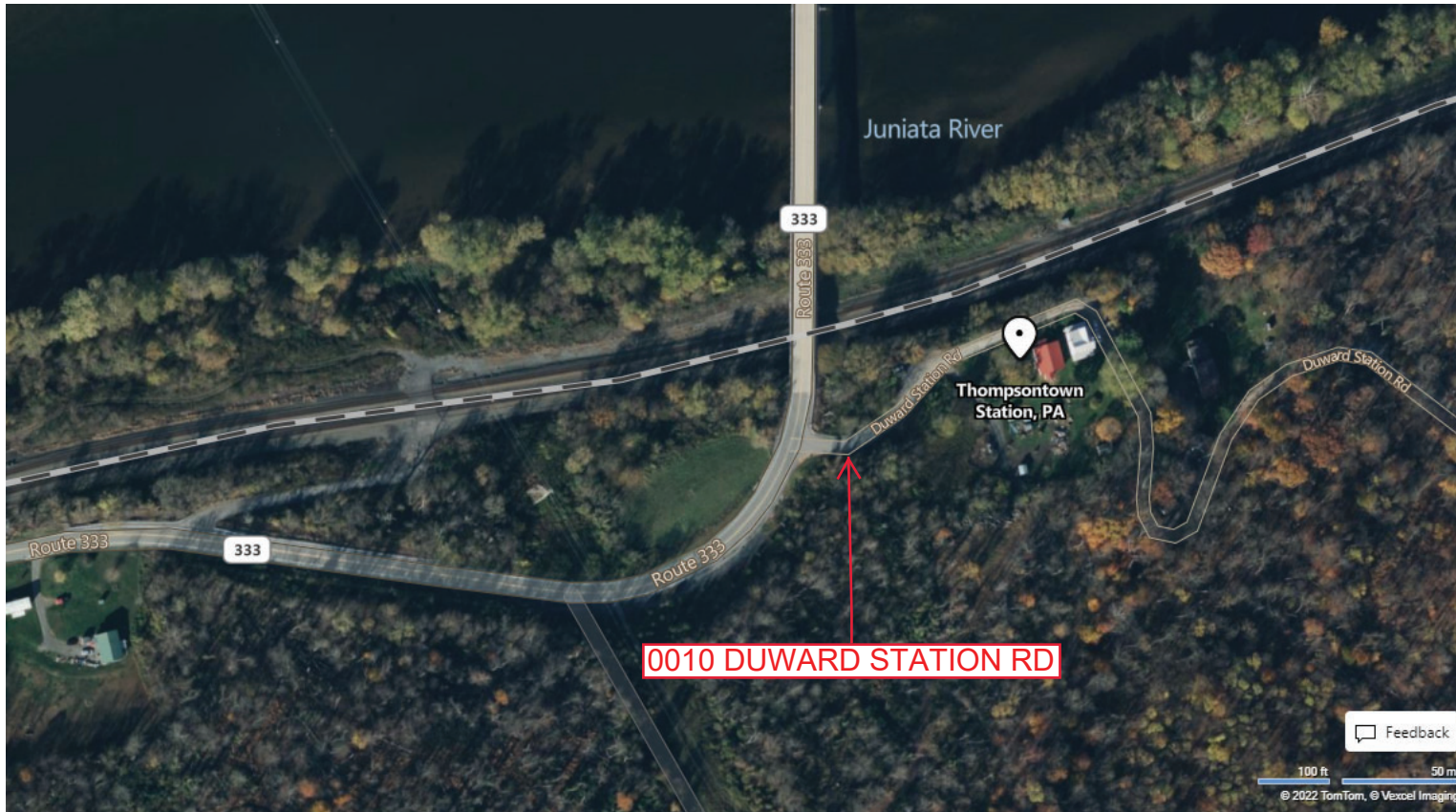
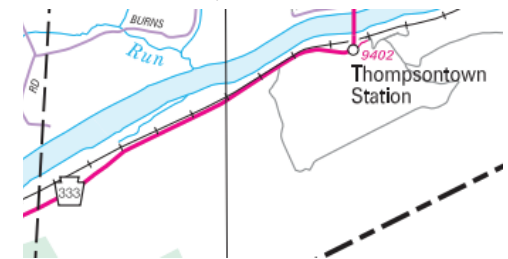
Ramp Segment Number and Ramp Segment Length Information:

Segment	Length	Segment	Length	Segment	Length	Segment	Length
0010	0343						

Primary Route
Interchange Exit
Number

Secondary Route
Interchange Exit
Number

PennDOT Type 10 Map View:



Feedback

100 ft 50 m
© 2022 TomTom, © Vexxel Imaging

© 2023 Microsoft

Last Date Modified:

Feb 10, 2023

County: 34

RMS Interchange Information

Print Form

Interchange Number: 9404

Bureau of Maintenance & Operations
Asset Management Division



Interchange Name: FISH AND BOAT ACCESS

Intersecting SR's: US 22 & 322

Ramp Segment Number and Ramp Segment Length Information:

Segment	Length	Segment	Length	Segment	Length	Segment	Length
0010	1845						

Primary Route
Interchange Exit
Number

Secondary Route
Interchange Exit
Number

PennDOT Type 10 Map View:



Last Date Modified:

Feb 10, 2023