

County: 42

RMS Interchange Information

Print Form

Interchange Number: 8009

Bureau of Maintenance & Operations
Asset Management Division



Interchange Name: OWENS WAY INT

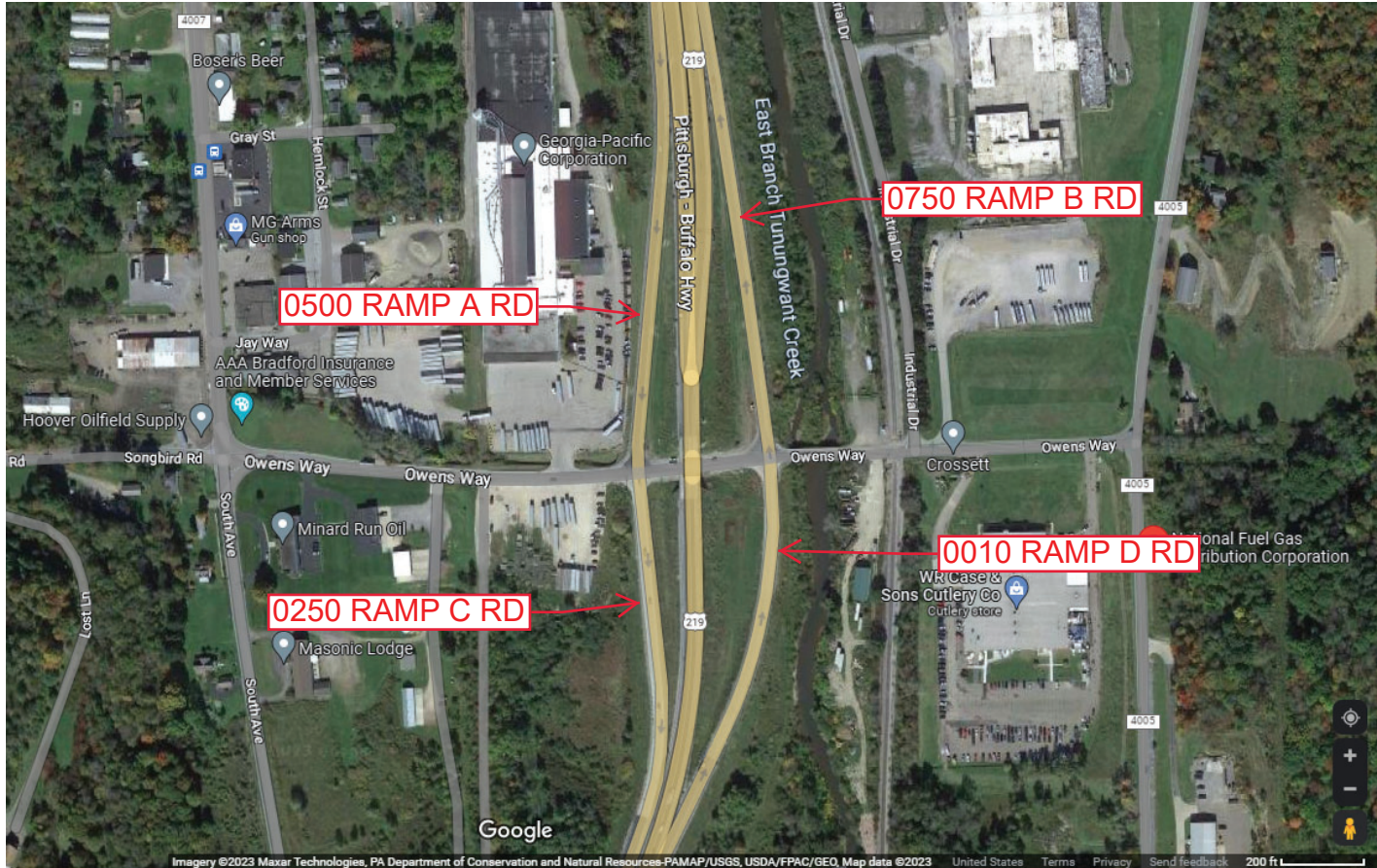
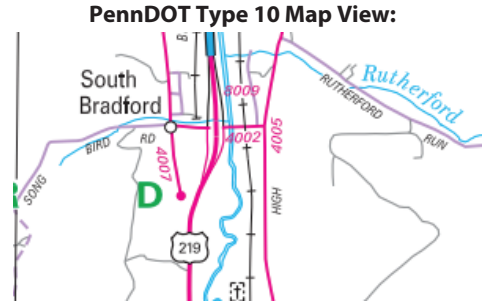
Intersecting SR's: US 219 & SR 4002 Owens Way

Ramp Segment Number and Ramp Segment Length Information:

Segment	Length	Segment	Length	Segment	Length	Segment	Length
0010	0877						
0250	0972						
0500	0877						
0750	0919						

Primary Route Interchange Exit Number

Secondary Route Interchange Exit Number



Last Date Modified: Feb 13, 2023

County: 42

RMS Interchange Information

Print Form

Interchange Number: 8011

Bureau of Maintenance & Operations
Asset Management Division



Interchange Name: ELM STREET INT

Intersecting SR's: US 219 Bradford Bp & SR 4015 Elm St

Ramp Segment Number and Ramp Segment Length Information:

Segment	Length	Segment	Length	Segment	Length	Segment	Length
0010	0759						
0250	0575						

Primary Route Interchange Exit Number

Secondary Route Interchange Exit Number

PennDOT Type 10 Map View:



Feedback

200 ft 50 m

© 2022 TomTom, © Vexcel Imaging

© 2023 Microsoft

Last Date Modified:

Feb 13, 2023

County: 42

RMS Interchange Information

Print Form

Interchange Number: 8013

Bureau of Maintenance & Operations
Asset Management Division



Interchange Name: FORMAN STREET INT

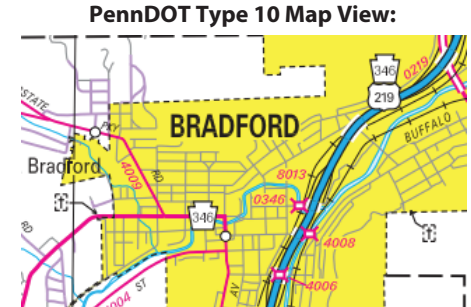
Intersecting SR's: US 219 Bradford Bp & CITY Forman St

Ramp Segment Number and Ramp Segment Length Information:

Segment	Length	Segment	Length	Segment	Length	Segment	Length
0500	0818						
0750	0402						

Primary Route Interchange Exit Number

Secondary Route Interchange Exit Number



Last Date Modified: Feb 13, 2023

County: 42

RMS Interchange Information

Print Form

Interchange Number: 8015

Bureau of Maintenance & Operations
Asset Management Division



Interchange Name: KENDALL AVENUE INT

Intersecting SR's: US 219, PA 46 Kendall Av & SR 4013 Seaward Av

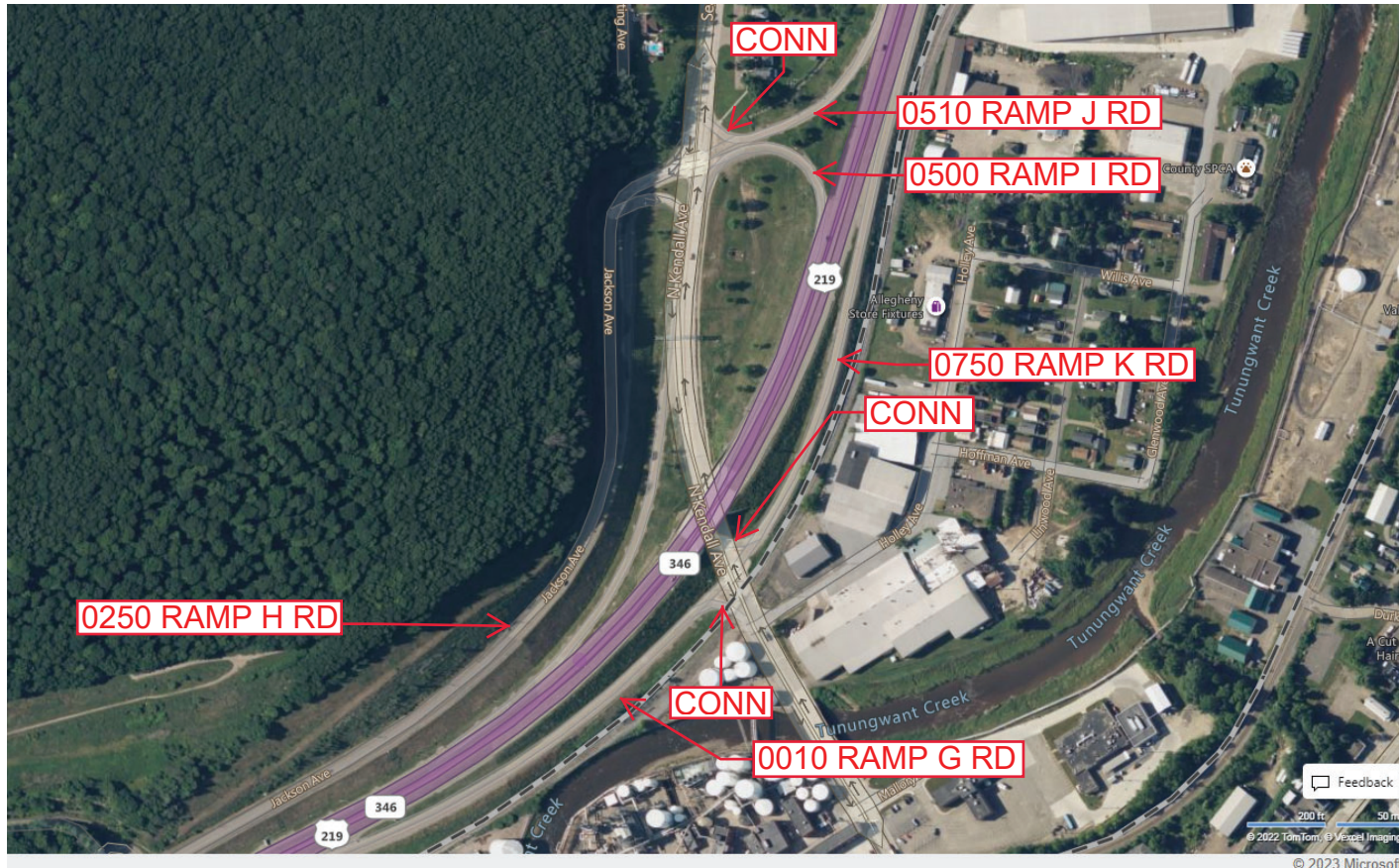
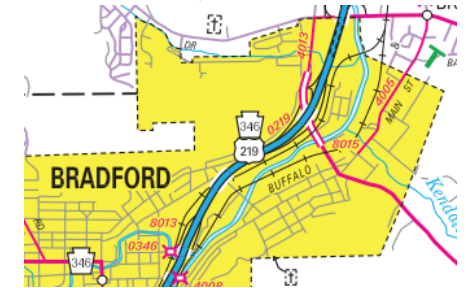
Ramp Segment Number and Ramp Segment Length Information:

Segment	Length	Segment	Length	Segment	Length	Segment	Length
0010	0119						
0250	0674						
0500	0391						
0510	0524						
0750	0944						

Primary Route
Interchange Exit
Number

Secondary Route
Interchange Exit
Number

PennDOT Type 10 Map View:



Last Date Modified:

Feb 13, 2023

County: 42

RMS Interchange Information

Print Form

Interchange Number: 8017

Bureau of Maintenance & Operations
Asset Management Division



Interchange Name: BOLIVER DRIVE INT

Intersecting SR's: US 219 Bradford Bp, PA 346 & SR 4013 Boliver Dr

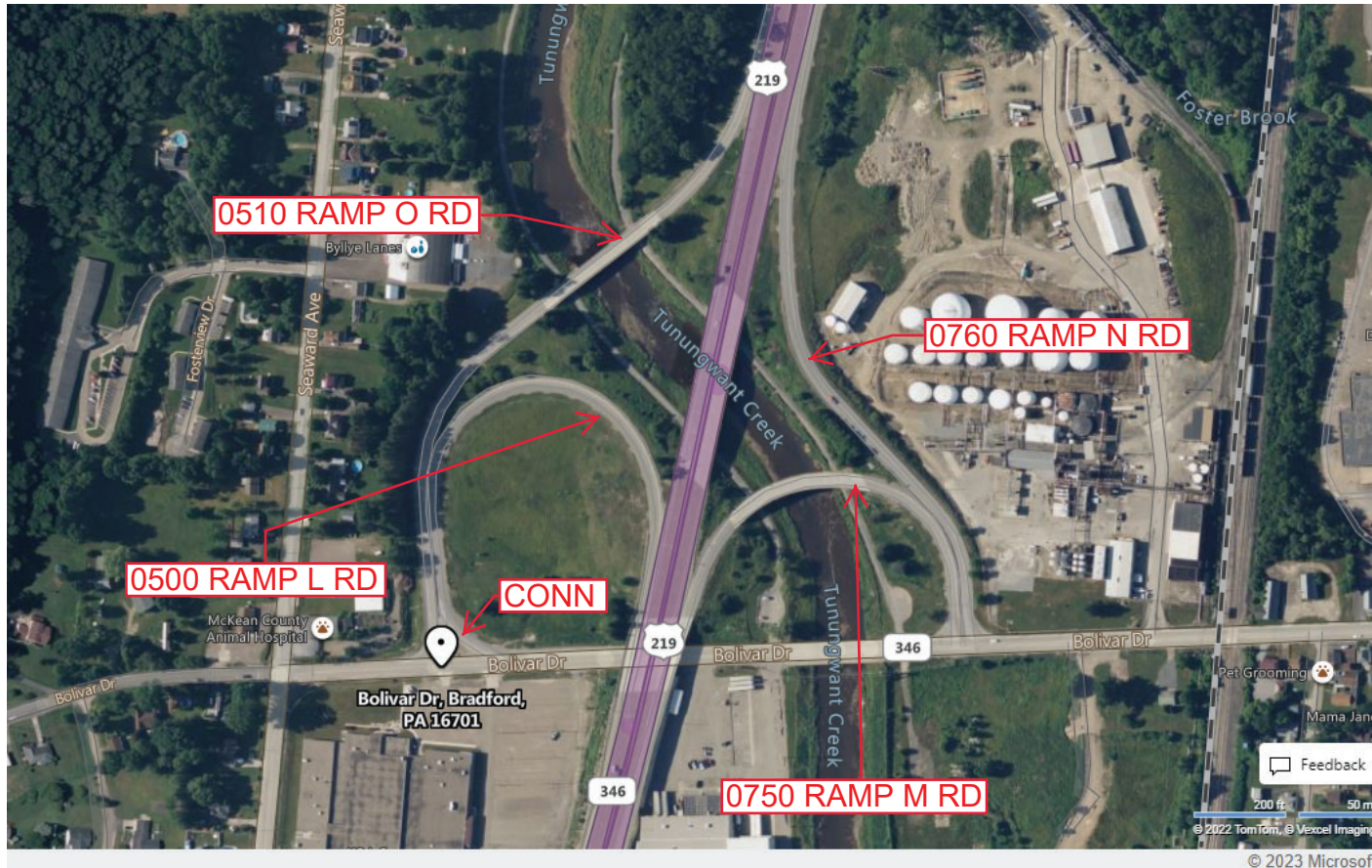
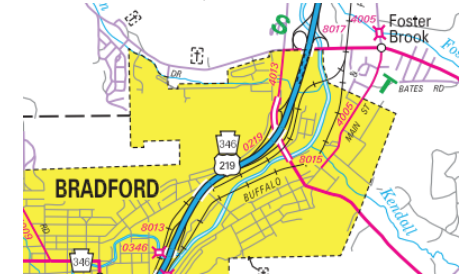
Ramp Segment Number and Ramp Segment Length Information:

Segment	Length	Segment	Length	Segment	Length	Segment	Length
0500	1149						
0510	1527						
0750	0910						
0760	1152						

Primary Route
Interchange Exit
Number

Secondary Route
Interchange Exit
Number

PennDOT Type 10 Map View:



Last Date Modified:

Feb 13, 2023

County: 42

RMS Interchange Information

Print Form

Interchange Number: 9109

Bureau of Maintenance & Operations
Asset Management Division



Interchange Name: SR 446 & SR 155

Intersecting SR's: PA 446

Ramp Segment Number and Ramp Segment Length Information:

Segment	Length	Segment	Length	Segment	Length	Segment	Length
0500	0247						

Primary Route Interchange Exit Number

Secondary Route Interchange Exit Number

PennDOT Type 10 Map View:



Feedback

100 ft 50 m
© 2022 TomTom, © Vexcel Imaging

© 2023 Microsoft

Last Date Modified:

Feb 13, 2023

County: 42

RMS Interchange Information

Print Form

Bureau of Maintenance & Operations
Asset Management Division



Interchange Number: 9202

Interchange Name: HAMLIN TWP REST AREA

Intersecting SR's: US 6 Grand Army of the Repu Hw

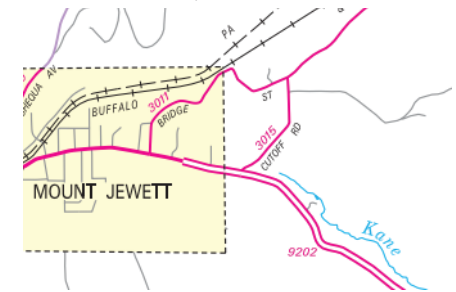
Ramp Segment Number and Ramp Segment Length Information:

Segment	Length	Segment	Length	Segment	Length	Segment	Length
0010	0124						

Primary Route Interchange Exit Number

Secondary Route Interchange Exit Number

PennDOT Type 10 Map View:



Feedback

30 ft 10 m
© 2022 TomTom, © Vexxel Imaging

© 2023 Microsoft

Last Date Modified:

Feb 14, 2023