

County: 44

RMS Interchange Information

Print Form

Interchange Number: 8002

Bureau of Maintenance & Operations
Asset Management Division



Interchange Name: REEDSVILLE INT

Intersecting SR's: US 322 & PA 655

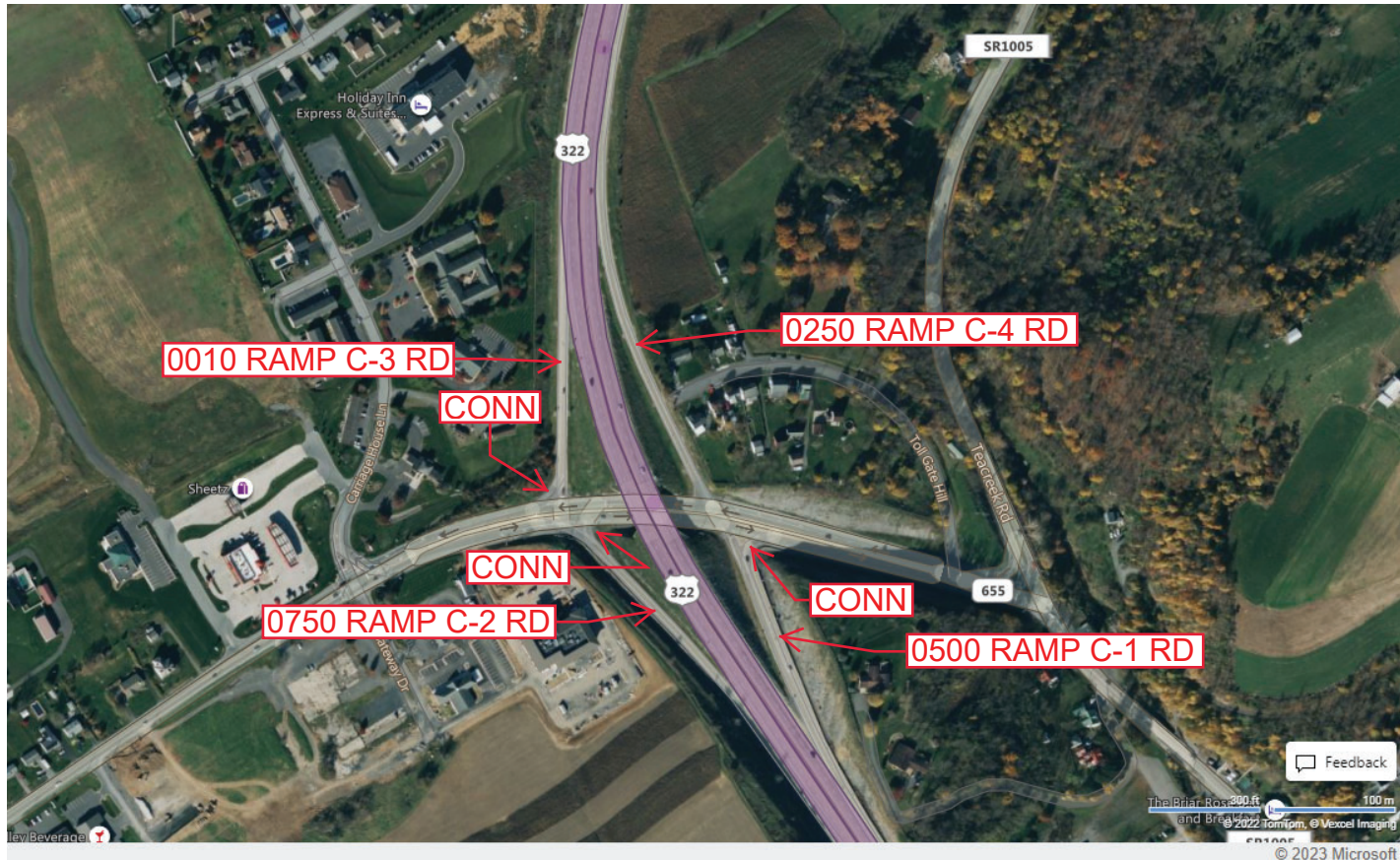
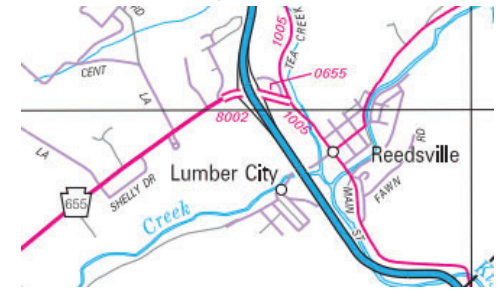
Ramp Segment Number and Ramp Segment Length Information:

Segment	Length	Segment	Length	Segment	Length	Segment	Length
0010	0469						
0250	0757						
0500	0561						
0750	0577						

Primary Route
Interchange Exit
Number

Secondary Route
Interchange Exit
Number

PennDOT Type 10 Map View:



Last Date Modified:

Feb 14, 2023

County: 44

RMS Interchange Information

Print Form

Bureau of Maintenance & Operations
Asset Management Division



Interchange Number: 8004

Interchange Name: BURNHAM-YEAGERTOWN

Intersecting SR's: US 322 & SR 4013 Ferguson Valley Rd

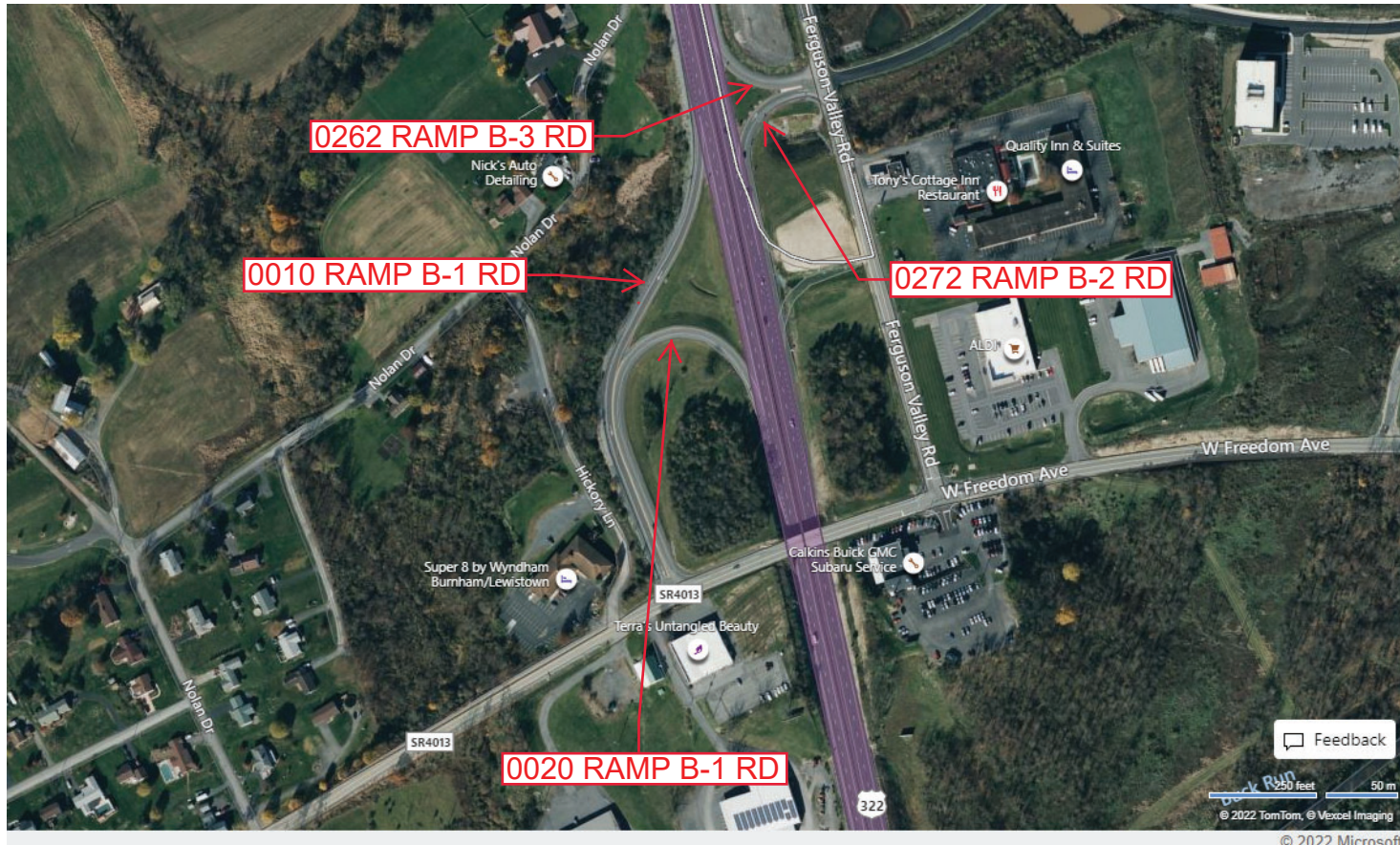
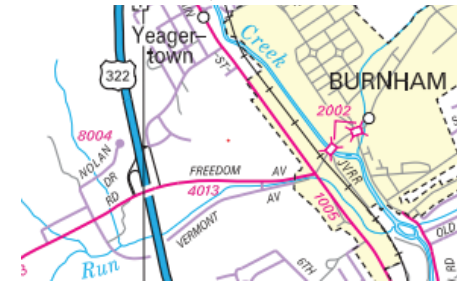
Ramp Segment Number and Ramp Segment Length Information:

Segment	Length	Segment	Length	Segment	Length	Segment	Length
0010	1112						
0020	0914						
0262	0227						
0272	0237						

Primary Route
Interchange Exit
Number

Secondary Route
Interchange Exit
Number

PennDOT Type 10 Map View:



Feedback

© 2022 TomTom, © Vexcel Imaging

© 2022 Microsoft

Last Date Modified:

Aug 19, 2022

County: 44

RMS Interchange Information

Bureau of Maintenance & Operations
Asset Management Division

Print Form



Interchange Number: 8005

Interchange Name: JUNIATA ST/CHARLES ST

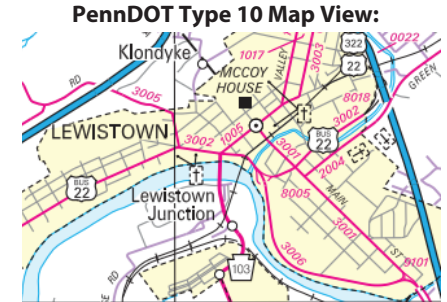
Intersecting SR's: SR 3002 Charles St & SR 3006 Juniata St

Ramp Segment Number and Ramp Segment Length Information:

Segment	Length	Segment	Length	Segment	Length	Segment	Length
0010	0940						
0250	0434						

Primary Route
Interchange Exit
Number

Secondary Route
Interchange Exit
Number



Last Date Modified:

Feb 14, 2023

County: 44

RMS Interchange Information

Print Form

Interchange Number: 8006

Bureau of Maintenance & Operations
Asset Management Division



Interchange Name: ELECTRIC AVENUE INT

Intersecting SR's: US 22 Twenty Eighth Division Hw & SR 1005 Electric Av

Ramp Segment Number and Ramp Segment Length Information:

Segment	Length	Segment	Length	Segment	Length	Segment	Length
0250	1360						
0500	0528						

Primary Route
Interchange Exit
Number

Secondary Route
Interchange Exit
Number

PennDOT Type 10 Map View:



Last Date Modified:

Feb 14, 2023

County: 44

RMS Interchange Information

Print Form

Interchange Number: 8008

Bureau of Maintenance & Operations
Asset Management Division



Interchange Name: WALNUT ST INT

Intersecting SR's: US 22, PA 522, SR 1017 Walnut St & SR 3003 Logan St

Ramp Segment Number and Ramp Segment Length Information:

Segment	Length	Segment	Length	Segment	Length	Segment	Length
0010	1103						
0020	0430						
0250	0863						
0500	0709						

Primary Route Interchange Exit Number

Secondary Route Interchange Exit Number

PennDOT Type 10 Map View:



Last Date Modified:

Feb 15, 2023

County: 44

RMS Interchange Information

Print Form

Interchange Number: 8010

Bureau of Maintenance & Operations
Asset Management Division



Interchange Name: MILROY INT

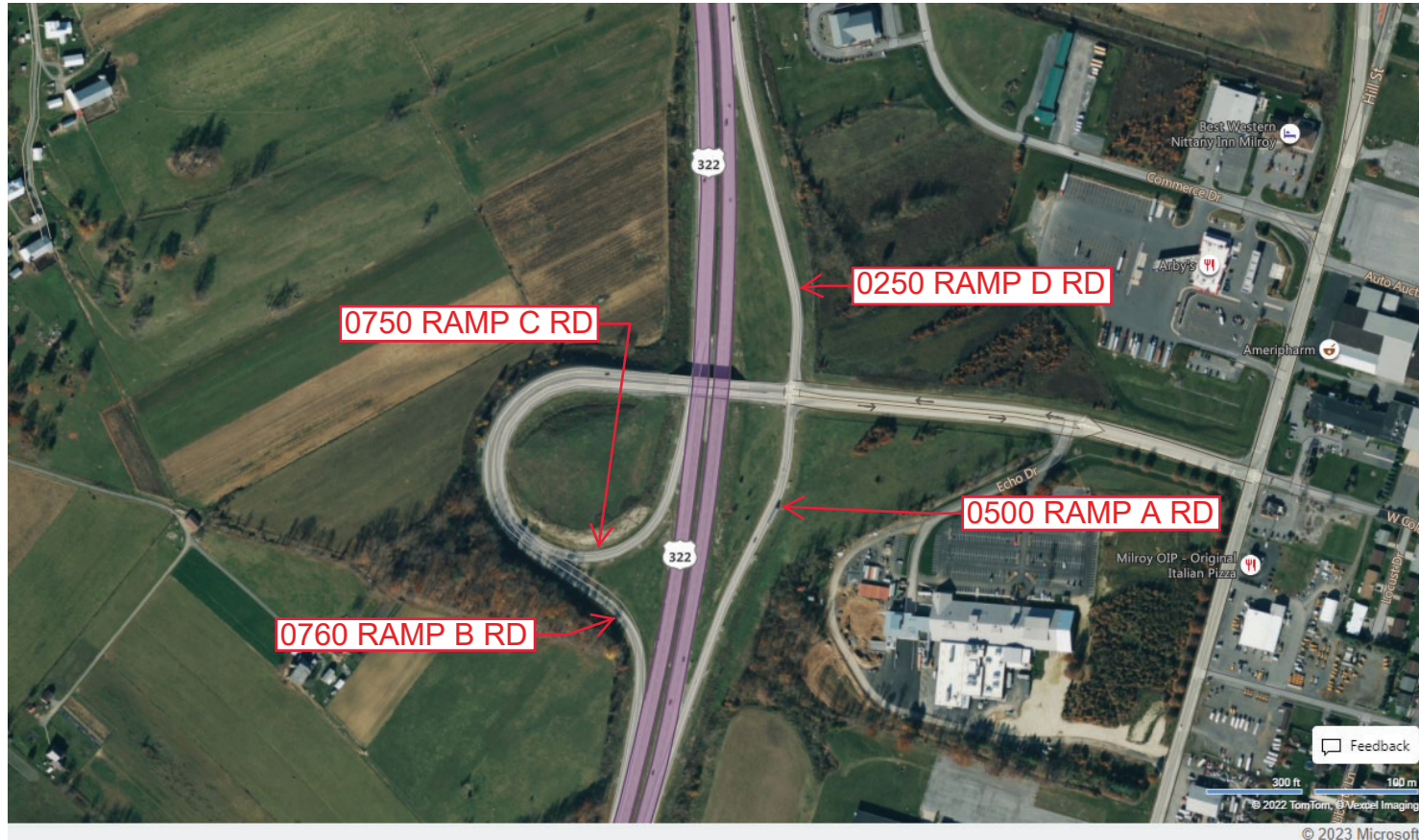
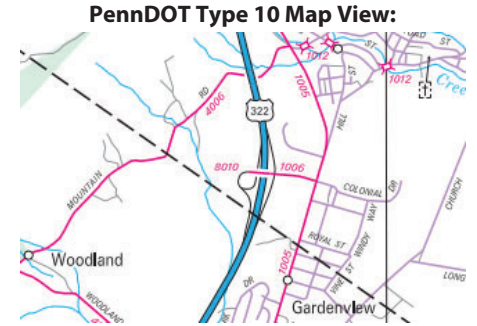
Intersecting SR's: US 322 Twenty Eighth Division Hw & SR 1006

Ramp Segment Number and Ramp Segment Length Information:

Segment	Length	Segment	Length	Segment	Length	Segment	Length
0250	1040						
0500	1027						
0750	1621						
0760	1698						

Primary Route Interchange Exit Number

Secondary Route Interchange Exit Number



Last Date Modified: Feb 15, 2023

County: 44

RMS Interchange Information

Print Form

Interchange Number: 8012

Bureau of Maintenance & Operations
Asset Management Division



Interchange Name: US 22 BUSINESS INT

Intersecting SR's: US 22 Vietnam Men Hw & SR 3002

Ramp Segment Number and Ramp Segment Length Information:

Segment	Length	Segment	Length	Segment	Length	Segment	Length
0010	0750						
0500	1343						
0510	1715						
0750	1894						

Primary Route
Interchange Exit
Number

Secondary Route
Interchange Exit
Number

PennDOT Type 10 Map View:



Last Date Modified:

Feb 15, 2023

County: 44

RMS Interchange Information

Print Form

Interchange Number: 8014

Bureau of Maintenance & Operations
Asset Management Division



Interchange Name: ORT VALLEY RD INT

Intersecting SR's: US 22, US 322 & SR 3023 Ort Valley Rd

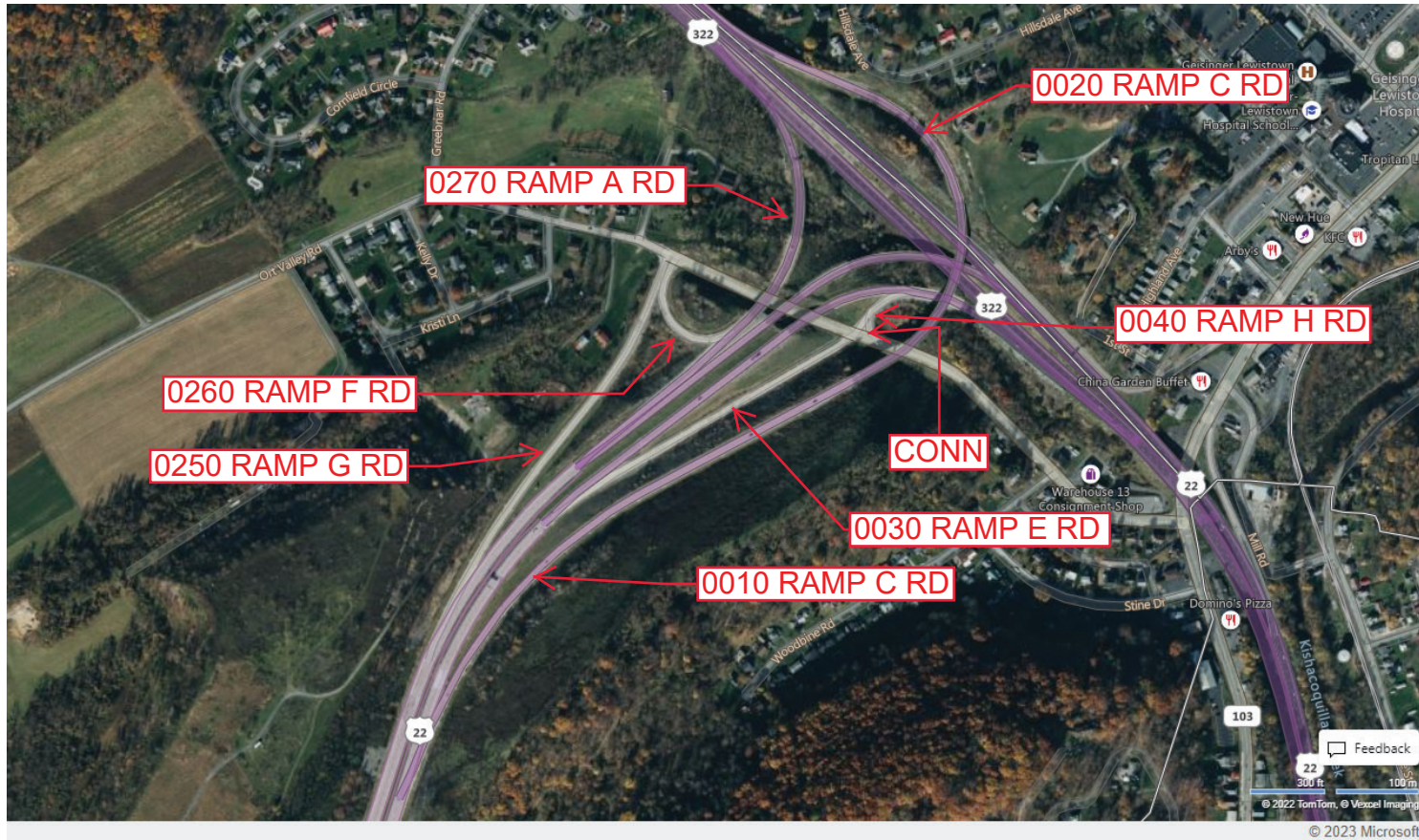
Ramp Segment Number and Ramp Segment Length Information:

Segment	Length	Segment	Length	Segment	Length	Segment	Length
0010	2190	0260	0442				
0020	1959	0270	1158				
0030	1095						
0040	0185						
0250	1472						

Primary Route
Interchange Exit
Number

Secondary Route
Interchange Exit
Number

PennDOT Type 10 Map View:



Last Date Modified:

Feb 15, 2023

County: 44

RMS Interchange Information

Print Form

Interchange Number: 8016

Bureau of Maintenance & Operations
Asset Management Division



Interchange Name: JUNIATA ST/SR 22 BUS

Intersecting SR's: US 22 Twenty Eighth Division Hw & SR3006

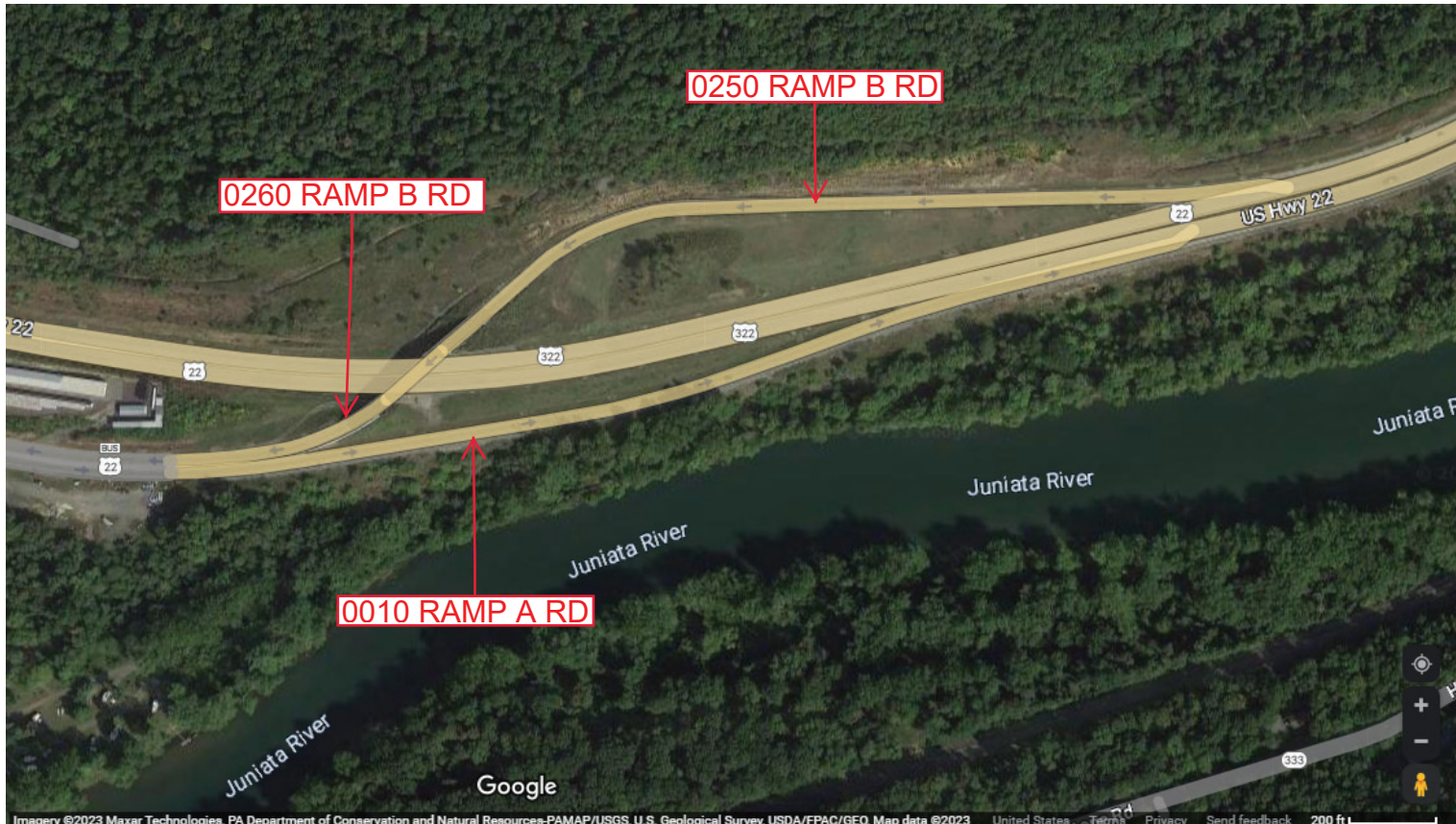
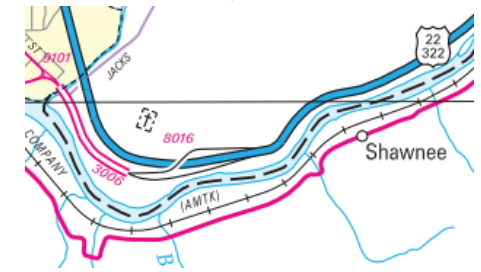
Ramp Segment Number and Ramp Segment Length Information:

Segment	Length	Segment	Length	Segment	Length	Segment	Length
0010	2354						
0250	1680						
0260	1416						

Primary Route
Interchange Exit
Number

Secondary Route
Interchange Exit
Number

PennDOT Type 10 Map View:



Imagery ©2023 Maxar Technologies, PA Department of Conservation and Natural Resources-PAMAP/USGS, U.S. Geological Survey, USDA/FPAC/GEO, Map data ©2023 United States, Terms Privacy Send feedback 200 ft

Last Date Modified:

Feb 16, 2023

County: **44**

RMS Interchange Information

Print Form

Interchange Number: **8018**

Bureau of Maintenance & Operations
Asset Management Division



Interchange Name: **EAST CHARLES ST INT**

Intersecting SR's: **US 22 & SR 3002**

Ramp Segment Number and Ramp Segment Length Information:

Segment	Length	Segment	Length	Segment	Length	Segment	Length
0010	1026						
0250	1327						

Primary Route
Interchange Exit
Number

Secondary Route
Interchange Exit
Number

PennDOT Type 10 Map View:



Last Date Modified: **Feb 16, 2023**

County: 44

RMS Interchange Information

Print Form

Interchange Number: 9101

Bureau of Maintenance & Operations
Asset Management Division



Interchange Name: SR 3001/SR 3006 WYE

Intersecting SR's: SR 3001 Main St & SR 3006

Ramp Segment Number and Ramp Segment Length Information:

Segment	Length	Segment	Length	Segment	Length	Segment	Length
0010	0327						

Primary Route
Interchange Exit
Number

Secondary Route
Interchange Exit
Number

PennDOT Type 10 Map View:



Feedback

100 ft 30 m

© 2022 TomTom, © Vexcel Imaging

© 2023 Microsoft

Last Date Modified:

Feb 16, 2023

County: 44

RMS Interchange Information

Bureau of Maintenance & Operations
Asset Management Division

Print Form



Interchange Number: 9302

Interchange Name: SR 322 TRUCK ESCAPE LN

Intersecting SR's: US 322 Twenty Eighth Division Hw

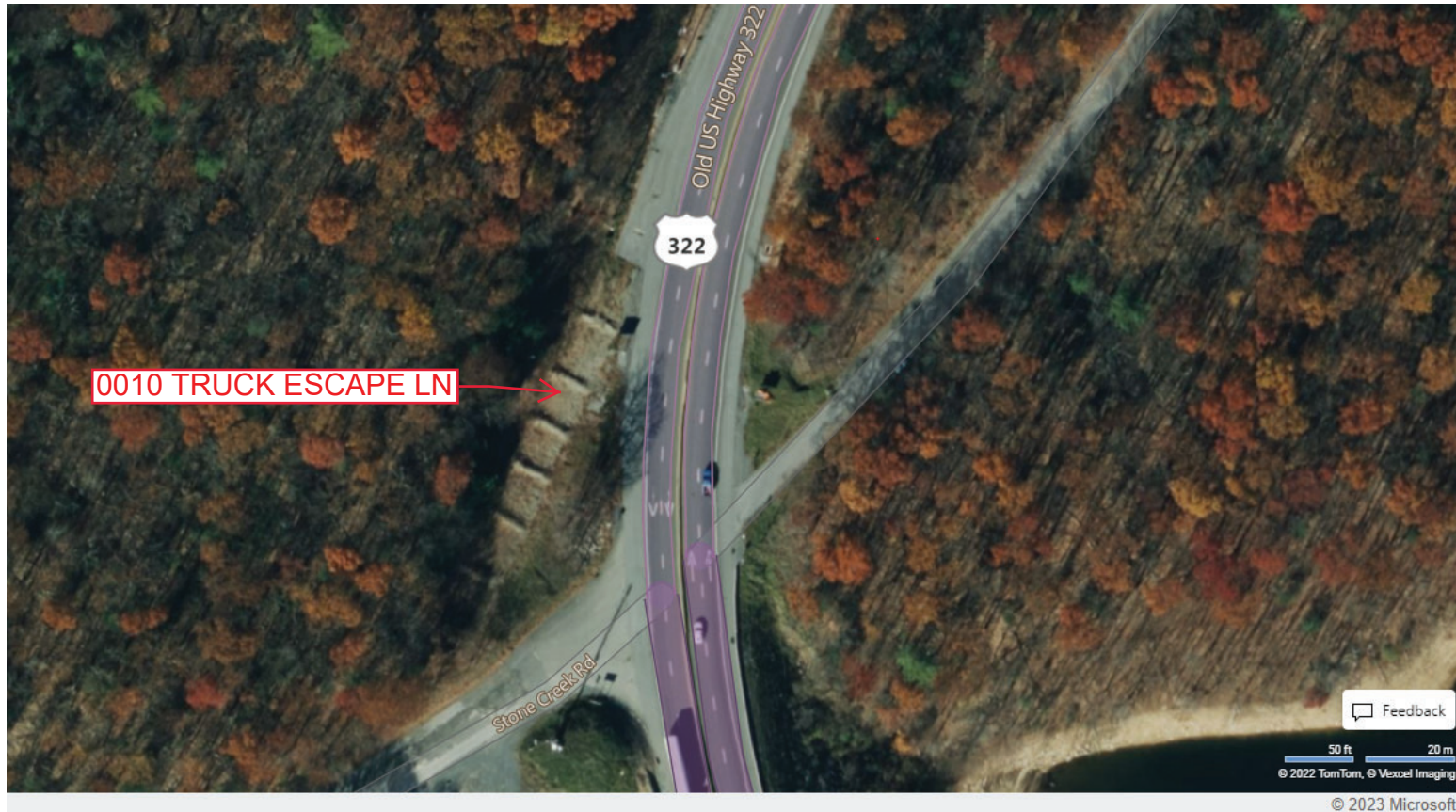
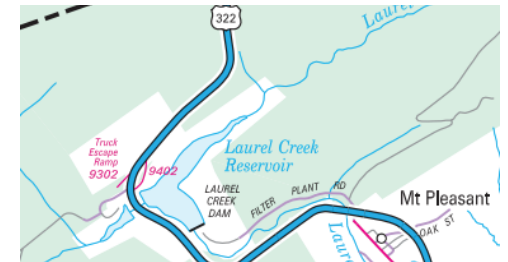
Ramp Segment Number and Ramp Segment Length Information:

Segment	Length	Segment	Length	Segment	Length	Segment	Length
0010	0320						

Primary Route
Interchange Exit
Number

Secondary Route
Interchange Exit
Number

PennDOT Type 10 Map View:



Feedback

50 ft 20 m
© 2022 TomTom, © Vexcel Imaging

© 2023 Microsoft

Last Date Modified:

Feb 16, 2023

County: 44

RMS Interchange Information

Print Form

Interchange Number: 9402

Bureau of Maintenance & Operations
Asset Management Division



Interchange Name: US 322 LOOP RD

Intersecting SR's: US 322 Twenty Eighth Division Hw

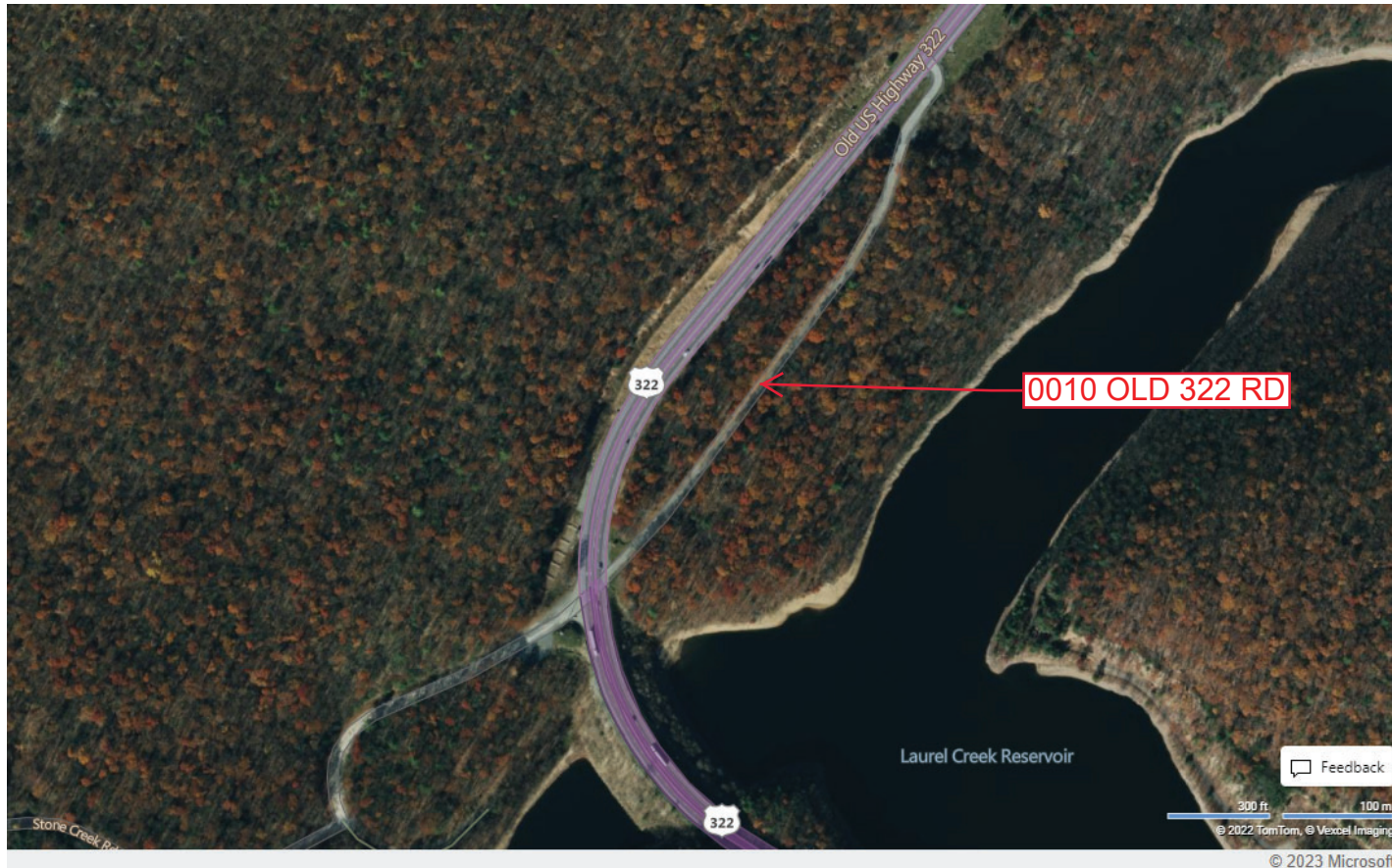
Ramp Segment Number and Ramp Segment Length Information:

Segment	Length	Segment	Length	Segment	Length	Segment	Length
0010	1875						

Primary Route Interchange Exit Number

Secondary Route Interchange Exit Number

PennDOT Type 10 Map View:



Last Date Modified: Feb 16, 2023