

County: 08

# RMS Interchange Information

Print Form

Interchange Number: 8001

Bureau of Maintenance & Operations  
Asset Management Division



Interchange Name: PATTERSON BL INT

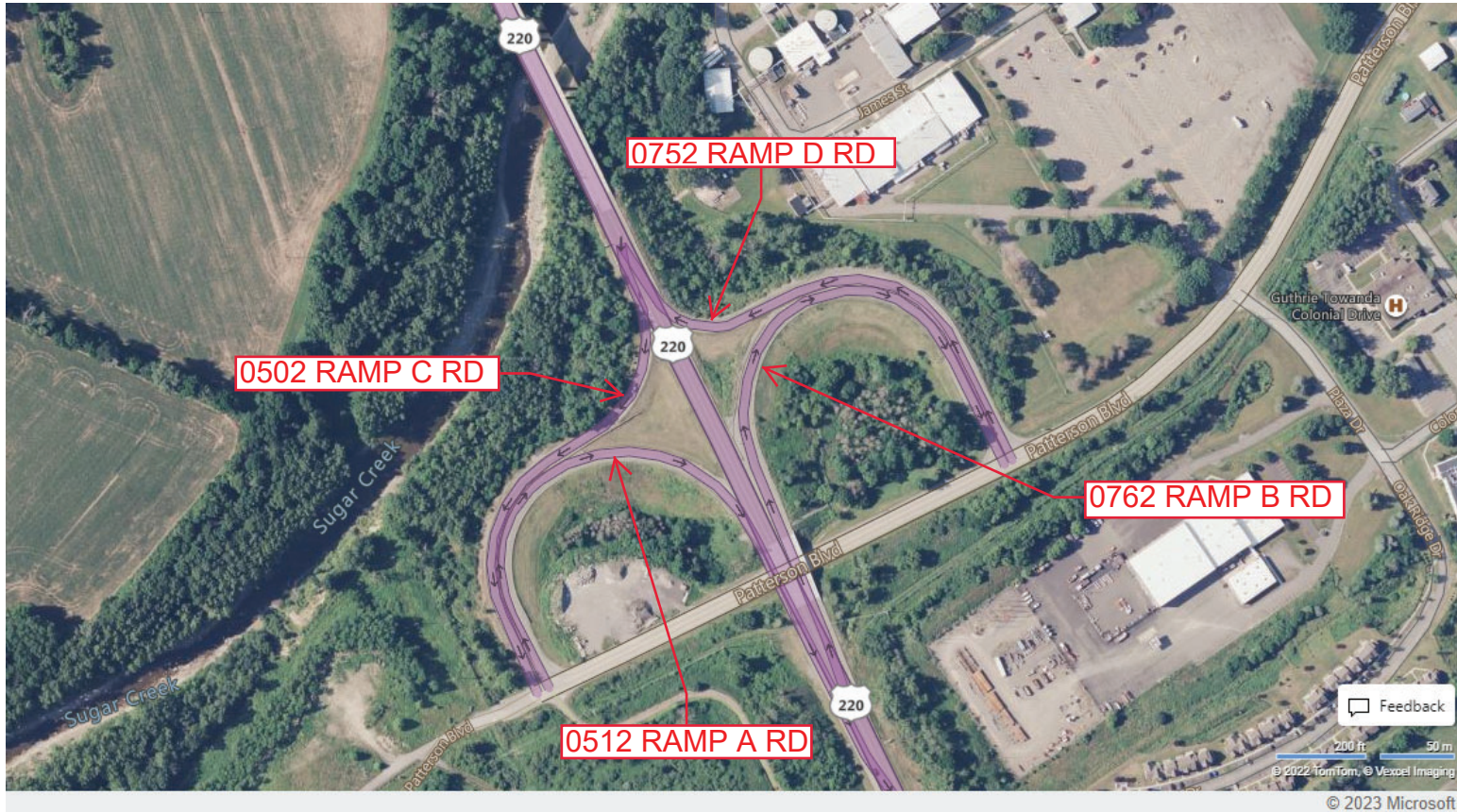
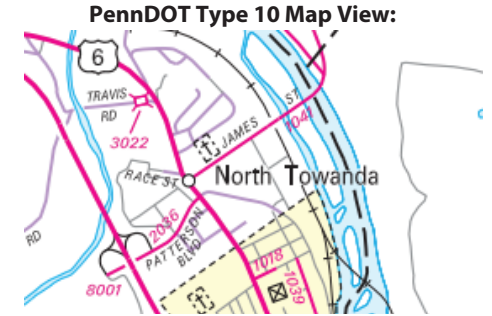
Intersecting SR's: US 220 & SR 2036 Patterson Bl

Ramp Segment Number and Ramp Segment Length Information:

Segment	Length	Segment	Length	Segment	Length	Segment	Length
0502	0943						
0512	0957						
0752	0993						
0762	1103						

Primary Route Interchange Exit Number

Secondary Route Interchange Exit Number





County: 08

# RMS Interchange Information

Print Form

Interchange Number: 8002

Bureau of Maintenance & Operations  
Asset Management Division



Interchange Name: NORTH TOWANDA INT

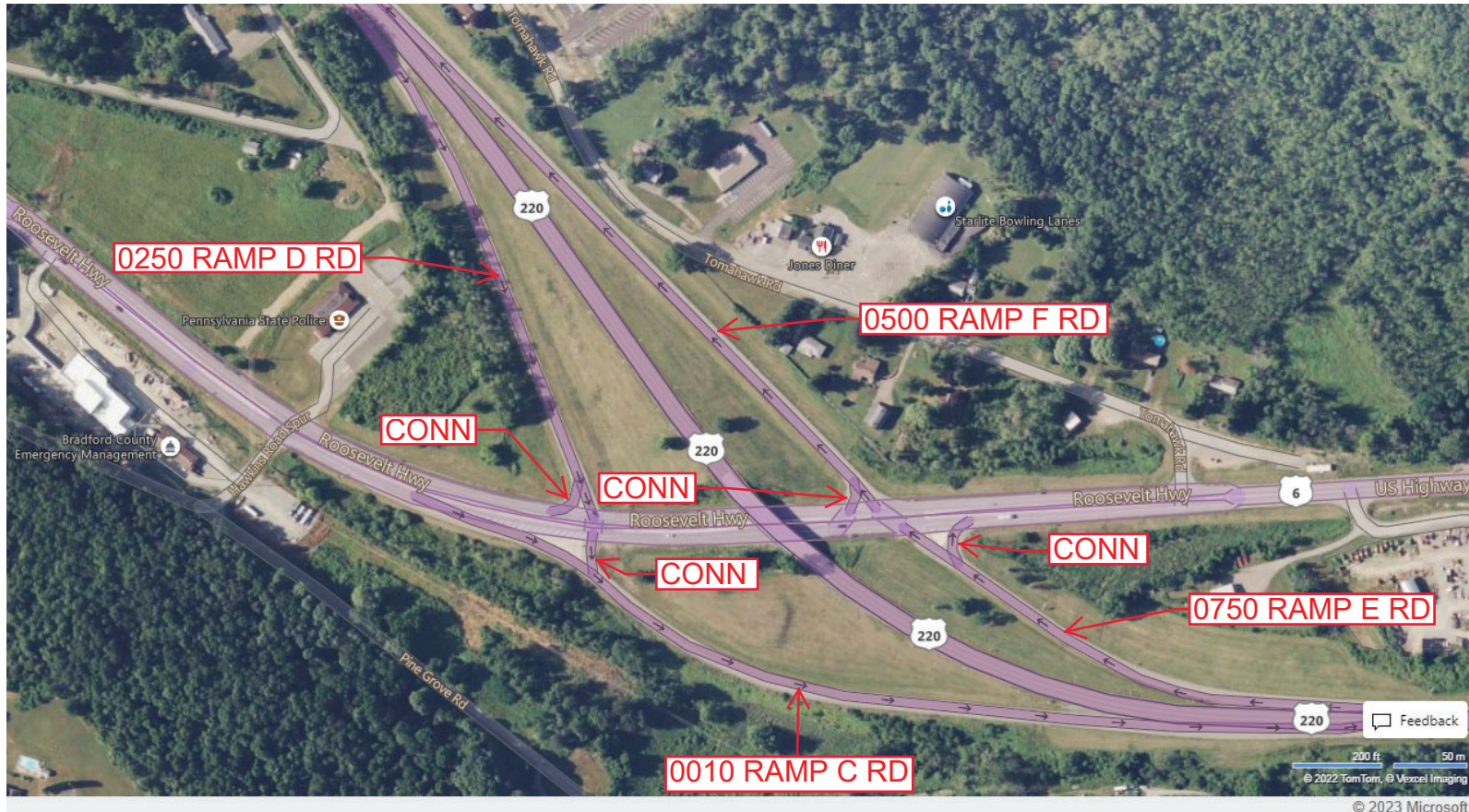
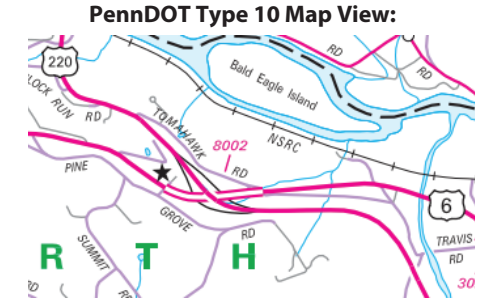
Intersecting SR's: US 6 & US 220

Ramp Segment Number and Ramp Segment Length Information:

Segment	Length	Segment	Length	Segment	Length	Segment	Length
0010	1470						
0250	1222						
0500	1425						
0750	0938						

Primary Route Interchange Exit Number

Secondary Route Interchange Exit Number



Last Date Modified: Feb 21, 2023



County: 08

# RMS Interchange Information

Print Form

Interchange Number: 8007

Bureau of Maintenance & Operations  
Asset Management Division



Interchange Name: PINE STREET INT

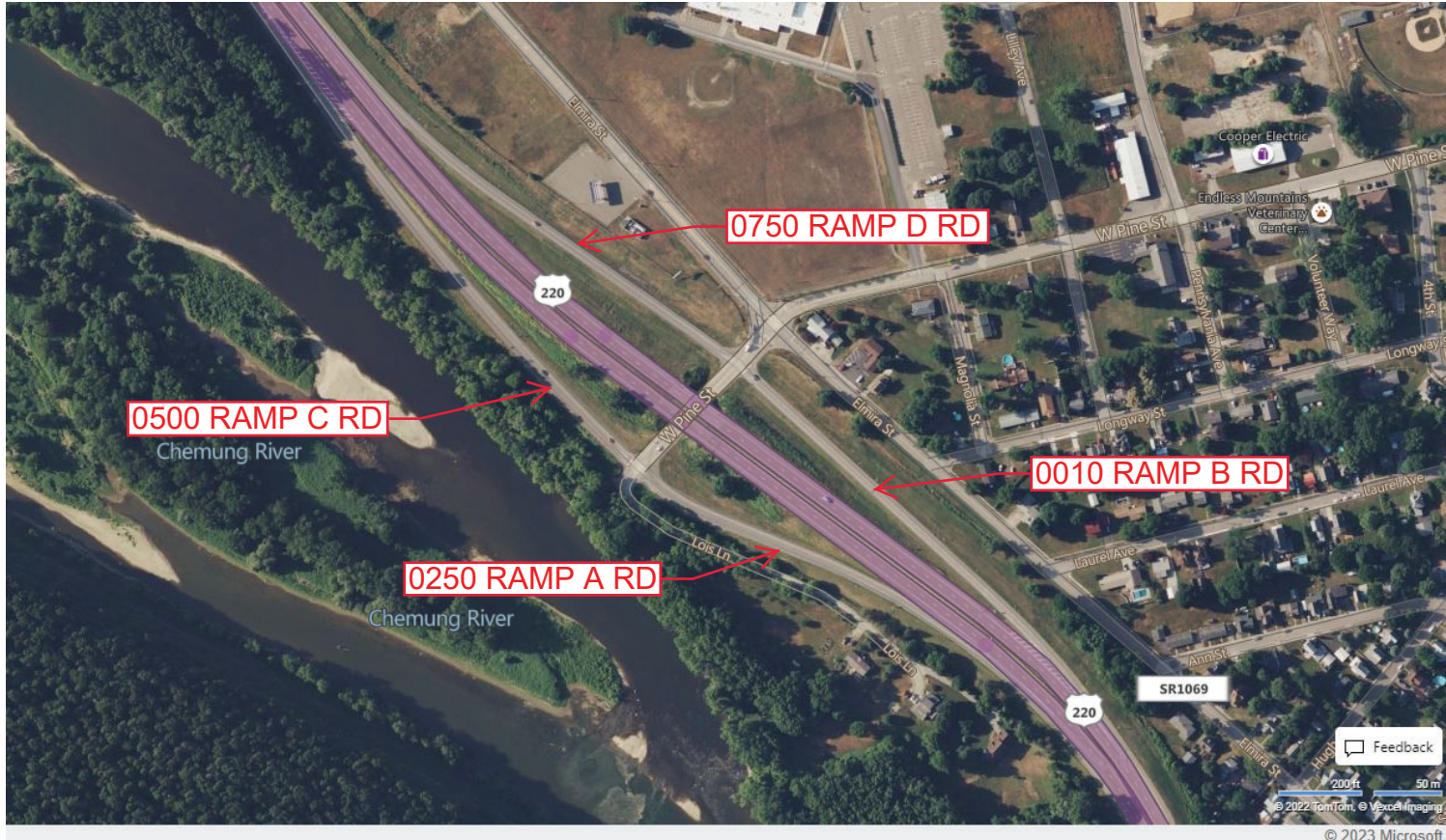
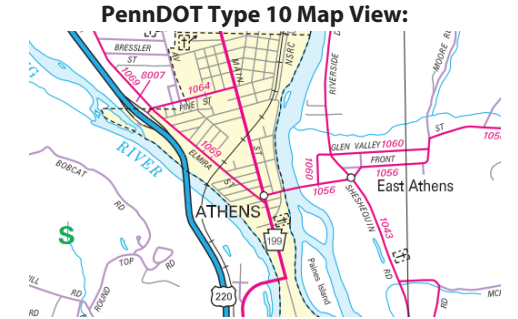
Intersecting SR's: US 220 & SR 1064 Pine Street

Ramp Segment Number and Ramp Segment Length Information:

Segment	Length	Segment	Length	Segment	Length	Segment	Length
0010	0948						
0250	0748						
0500	1127						
0750	1057						

Primary Route Interchange Exit Number

Secondary Route Interchange Exit Number



Last Date Modified: Feb 21, 2023



County: 08

# RMS Interchange Information

Print Form

Interchange Number: 8009

Bureau of Maintenance & Operations  
Asset Management Division



Interchange Name: SAYRE INT

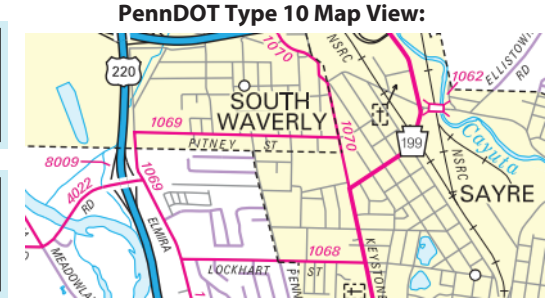
Intersecting SR's: US 220 & SR 4022 Wilawana Rd

Ramp Segment Number and Ramp Segment Length Information:

Segment	Length	Segment	Length	Segment	Length	Segment	Length
0010	0988						
0250	1136						
0500	0990						
0750	0930						

Primary Route Interchange Exit Number

Secondary Route Interchange Exit Number



Last Date Modified: Feb 21, 2023



County: 08

# RMS Interchange Information

Print Form

Interchange Number: 9101

Bureau of Maintenance & Operations  
Asset Management Division



Interchange Name: RAMP Z RD

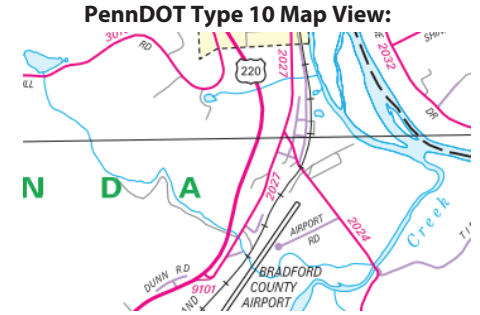
Intersecting SR's: US 220 & SR 2027 Dunn Rd

Ramp Segment Number and Ramp Segment Length Information:

Segment	Length	Segment	Length	Segment	Length	Segment	Length
0010	0220						

Primary Route Interchange Exit Number

Secondary Route Interchange Exit Number



Feedback

50 ft 20 m  
© 2022 TomTom, © Vexcel Imaging

© 2023 Microsoft

Last Date Modified: Feb 22, 2023

County: 08

# RMS Interchange Information

Print Form

Interchange Number: 9102

Bureau of Maintenance & Operations  
Asset Management Division



Interchange Name: WYE-SMITHFIELD

Intersecting SR's: SR 4014 Milan Rd & SR 4021 Chapel Rd

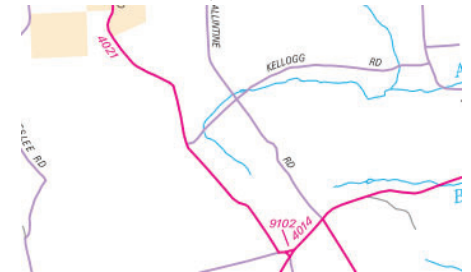
Ramp Segment Number and Ramp Segment Length Information:

Segment	Length	Segment	Length	Segment	Length	Segment	Length
0010	0295						

Primary Route Interchange Exit Number

Secondary Route Interchange Exit Number

PennDOT Type 10 Map View:



Feedback

50 ft 10 m

© 2022 TomTom, © Vexcel Imaging

© 2023 Microsoft

Last Date Modified: Feb 22, 2023



County: 08

# RMS Interchange Information

Print Form

Bureau of Maintenance & Operations  
Asset Management Division



Interchange Number: 9104

Interchange Name: SR 9104 SH

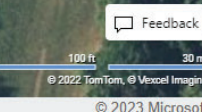
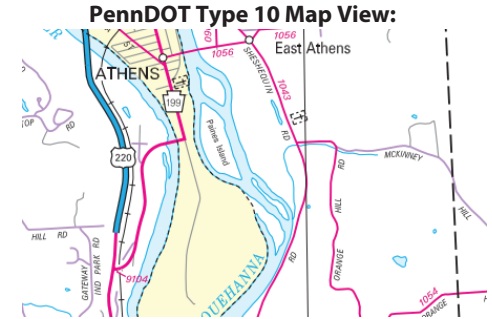
Intersecting SR's: US 220 & PA 199

Ramp Segment Number and Ramp Segment Length Information:

Segment	Length	Segment	Length	Segment	Length	Segment	Length
0010	0379						

Primary Route Interchange Exit Number

Secondary Route Interchange Exit Number



Last Date Modified: Feb 22, 2023

County: 08

# RMS Interchange Information

Bureau of Maintenance & Operations  
Asset Management Division

Print Form



Interchange Number: 9202

Interchange Name: US 6 ROADSIDE REST AREA

Intersecting SR's: US 6 Grand Army of the Republic Hw

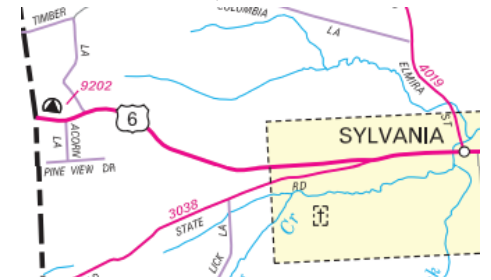
Ramp Segment Number and Ramp Segment Length Information:

Segment	Length	Segment	Length	Segment	Length	Segment	Length
0010	0390						

Primary Route Interchange Exit Number

Secondary Route Interchange Exit Number

PennDOT Type 10 Map View:



Last Date Modified:

Feb 22, 2023



County: 08

# RMS Interchange Information

Bureau of Maintenance & Operations  
Asset Management Division

Print Form



Interchange Number: 9203

Interchange Name: US 6 MARIE ANTOINETTE OVERLOOK

Intersecting SR's: US 6 RooseveltHw

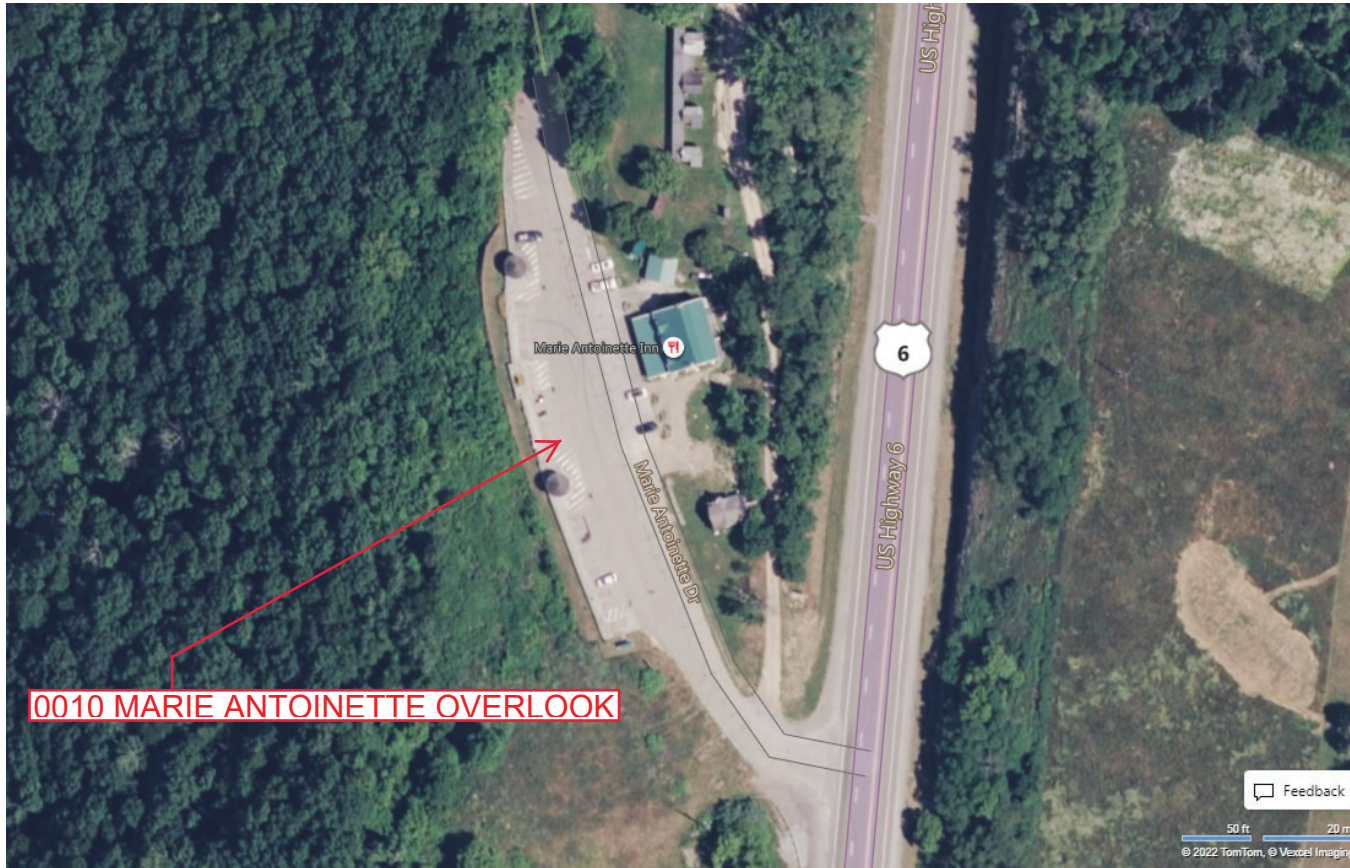
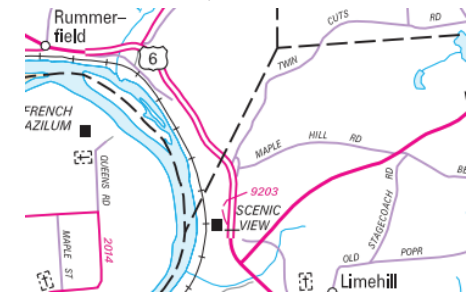
Ramp Segment Number and Ramp Segment Length Information:

Segment	Length	Segment	Length	Segment	Length	Segment	Length
0010	0578						

Primary Route Interchange Exit Number

Secondary Route Interchange Exit Number

PennDOT Type 10 Map View:



0010 MARIE ANTOINETTE OVERLOOK

Feedback  
50 ft 20 m  
© 2022 TomTom, © Vexcel Imaging  
© 2023 Microsoft

Last Date Modified:

Feb 22, 2023



County: 08

# RMS Interchange Information

Bureau of Maintenance & Operations  
Asset Management Division

Print Form



Interchange Number: 9402

Interchange Name: WYE

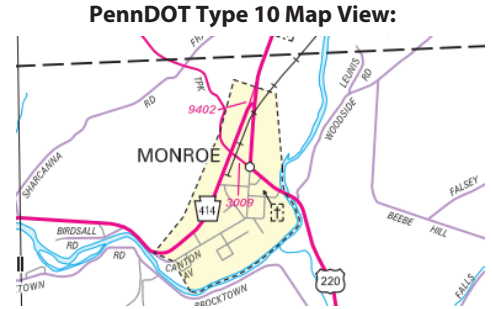
Intersecting SR's: US 220 & PA414 Pennsylvania Av

Ramp Segment Number and Ramp Segment Length Information:

Segment	Length	Segment	Length	Segment	Length	Segment	Length
0010	0276						

Primary Route Interchange Exit Number

Secondary Route Interchange Exit Number



Feedback

100 ft 30 m  
© 2022 TomTom, © Vexcel Imaging

© 2023 Microsoft

Last Date Modified:

Feb 23, 2023



County: 08

# RMS Interchange Information

Bureau of Maintenance & Operations  
Asset Management Division

Print Form



Interchange Number: 9404

Interchange Name: WYALUSING SCENIC VIEW

Intersecting SR's: US 6 Grand Army of Republic Hw

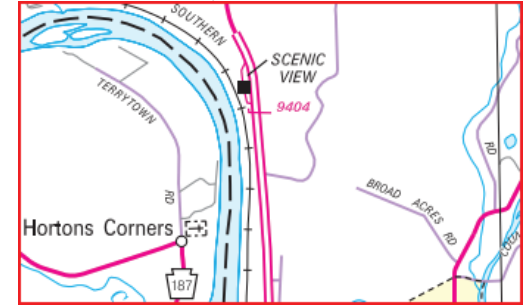
Ramp Segment Number and Ramp Segment Length Information:

Segment	Length	Segment	Length	Segment	Length	Segment	Length
0010	0230						

Primary Route Interchange Exit Number

Secondary Route Interchange Exit Number

PennDOT Type 10 Map View:



0010 WYALUSING SCENIC VIEW

Wyalusing Rocks Scenic Overlook

Last Date Modified: Jan 7, 2025