

County: 19

# RMS Interchange Information

Bureau of Maintenance & Operations  
Asset Management Division

Print Form



Interchange Number: 8002

Interchange Name: BUCKHORN INT

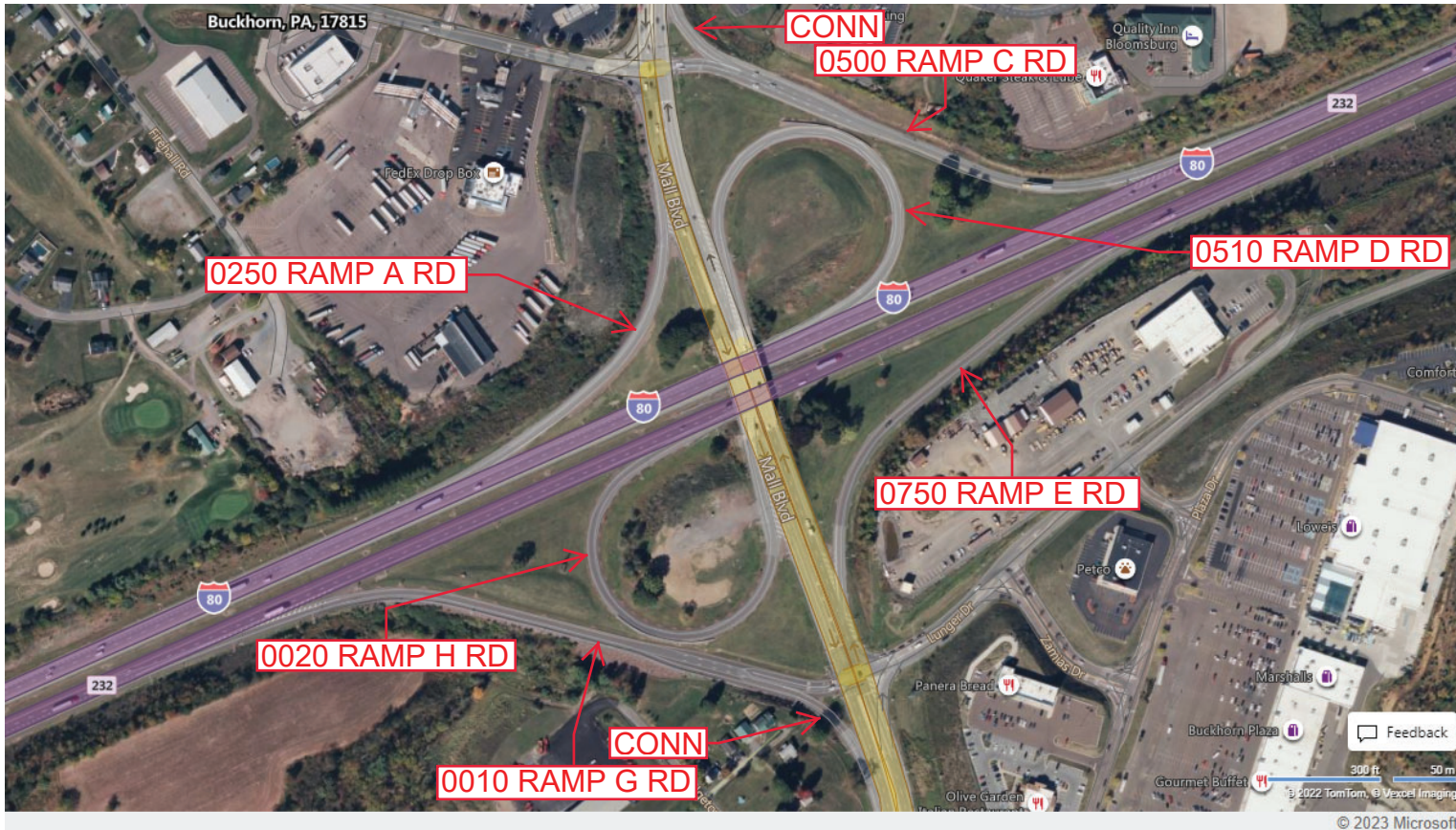
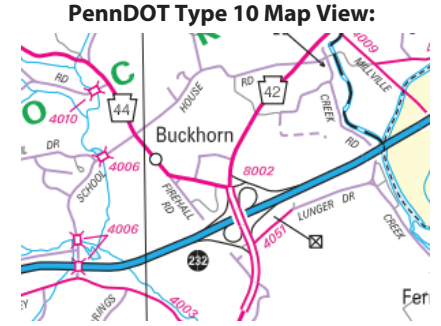
Intersecting SR's: I-80 & PA 42 Interchange Rd

Ramp Segment Number and Ramp Segment Length Information:

Segment	Length	Segment	Length	Segment	Length	Segment	Length
0010	1457	0750	1045				
0020	0988						
0250	0755						
0500	1365						
0510	0994						

Primary Route Interchange Exit Number: 232

Secondary Route Interchange Exit Number



Last Date Modified: Feb 23, 2023

County: 19

# RMS Interchange Information

Print Form

Interchange Number: 8003

Bureau of Maintenance & Operations  
Asset Management Division



Interchange Name: CATAWISSA INT

Intersecting SR's: US 11 Montour Bl & PA 42 Rupert Dr

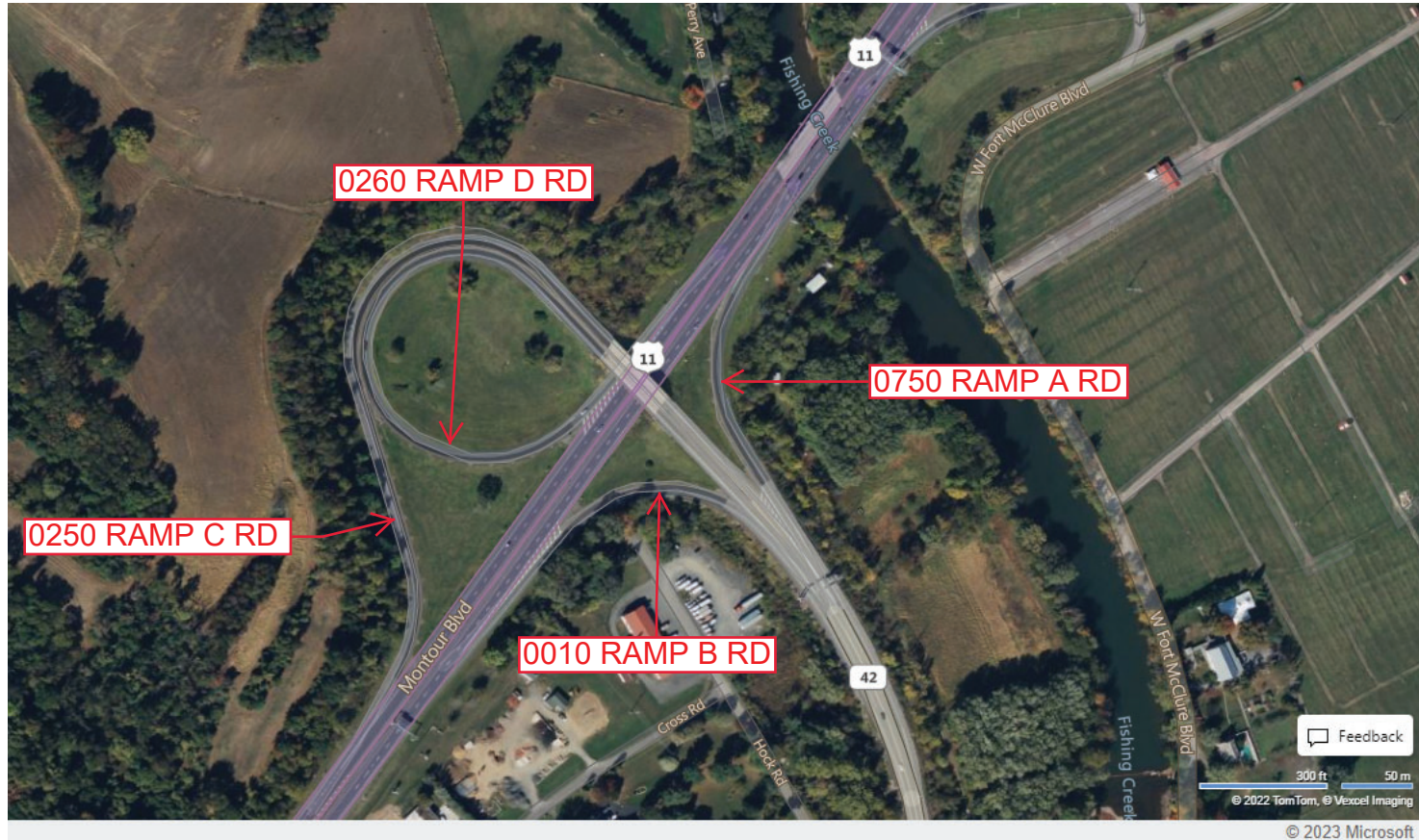
Ramp Segment Number and Ramp Segment Length Information:

Segment	Length	Segment	Length	Segment	Length	Segment	Length
0010	0423						
0250	1647						
0260	1428						
0750	0479						

Primary Route Interchange Exit Number

Secondary Route Interchange Exit Number

PennDOT Type 10 Map View:



Last Date Modified:

Feb 24, 2023

County: 19

# RMS Interchange Information

Bureau of Maintenance & Operations  
Asset Management Division

Print Form



Interchange Number: 8004

Interchange Name: LIGHTSTREET & BLOOMS INT

Intersecting SR's: I-80 & PA 487 Lightstreet Rd

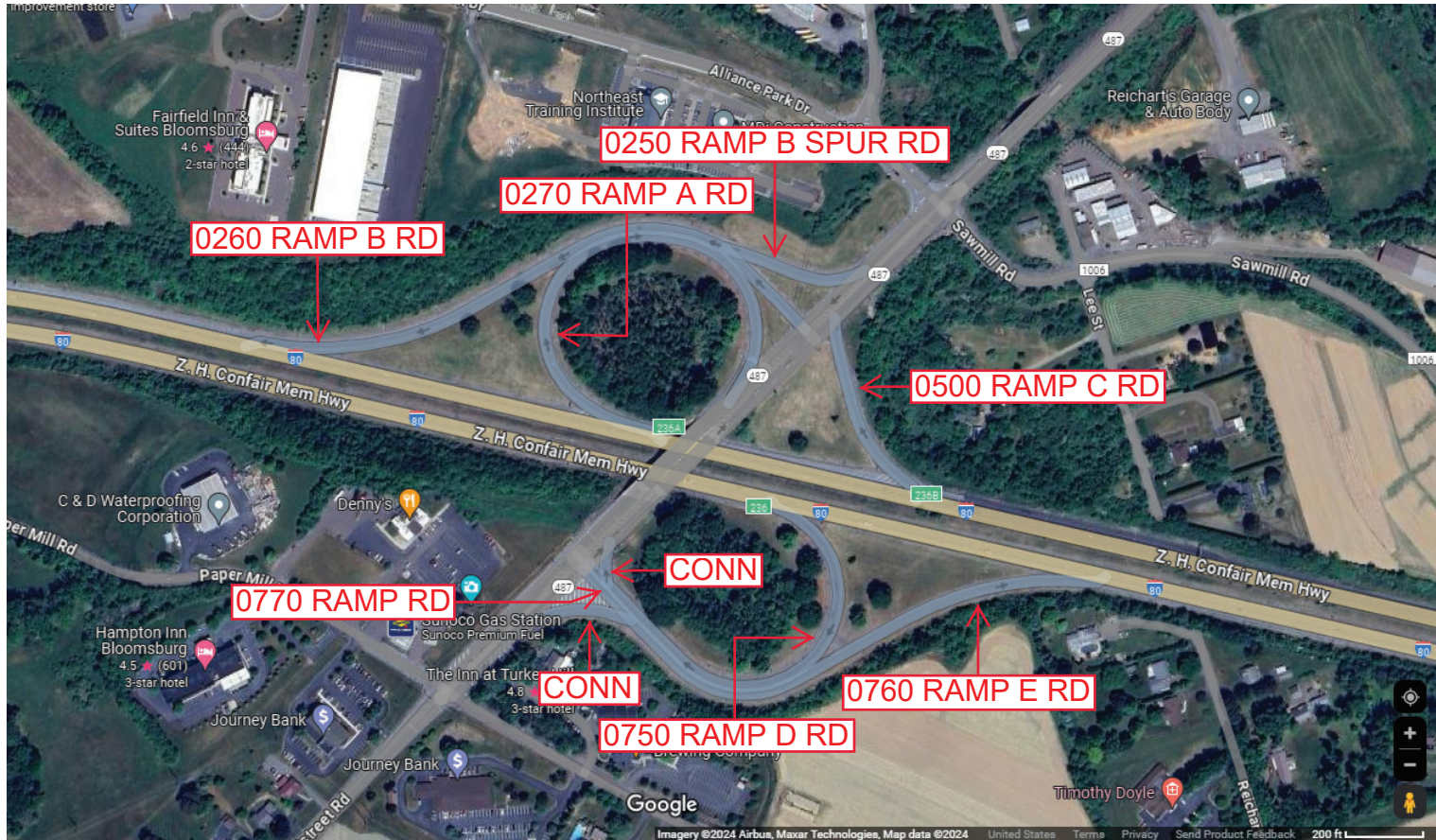
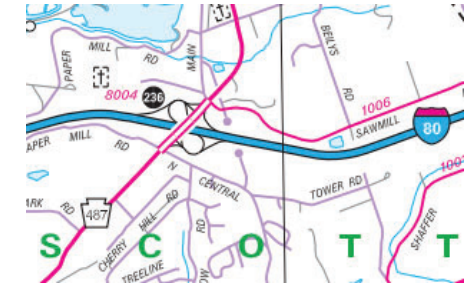
Ramp Segment Number and Ramp Segment Length Information:

Segment	Length	Segment	Length	Segment	Length	Segment	Length
0250	0236	0760	1427				
0260	1428	0770	0234				
0270	1152						
0500	0381						
0750	1105						

Primary Route Interchange Exit Number: 236

Secondary Route Interchange Exit Number: 236A/236B

PennDOT Type 10 Map View:



Last Date Modified:

Jan 17, 2025

County: 19

# RMS Interchange Information

Print Form

Interchange Number: 8005

Bureau of Maintenance & Operations  
Asset Management Division



Interchange Name: MILLVILLE & BUCKHORN INT

Intersecting SR's: US 11 & PA 42

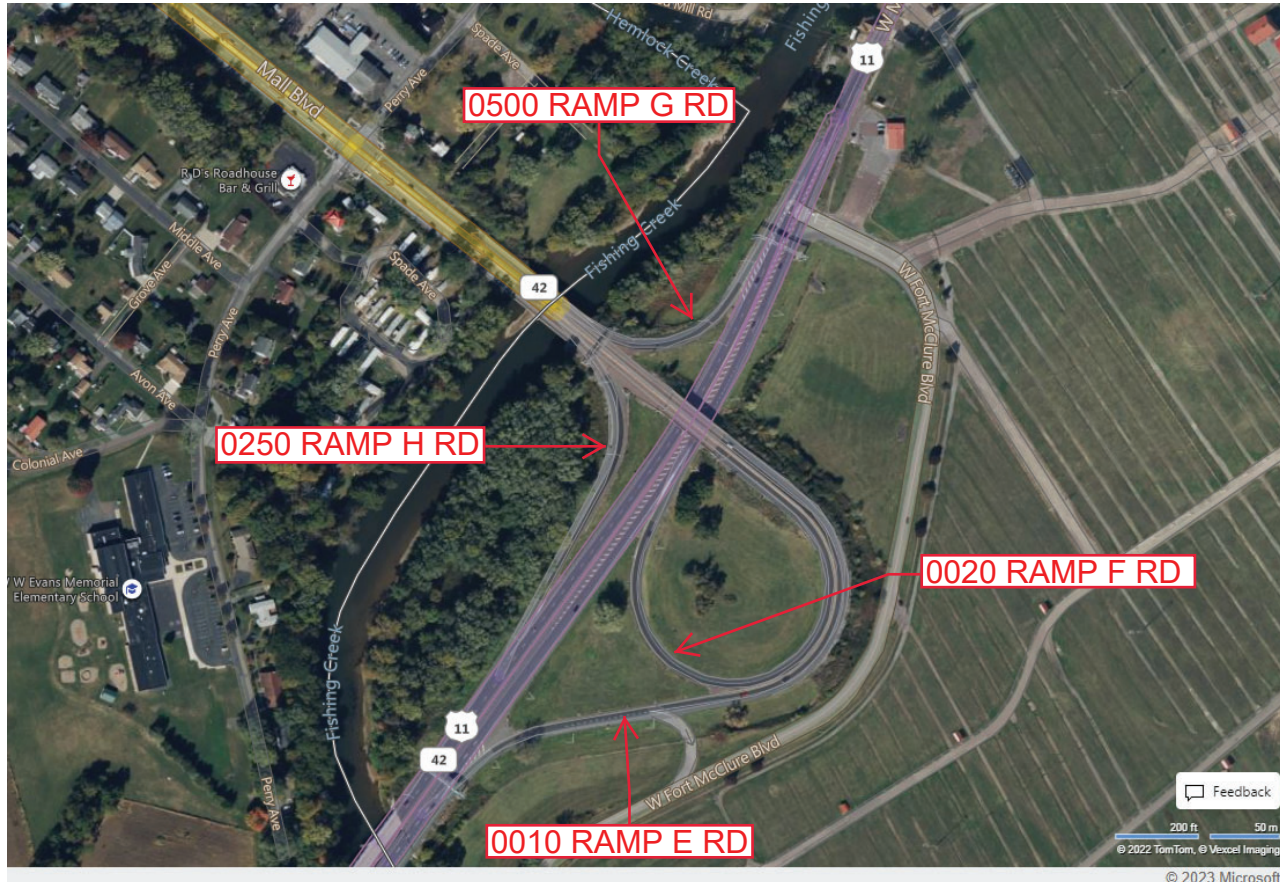
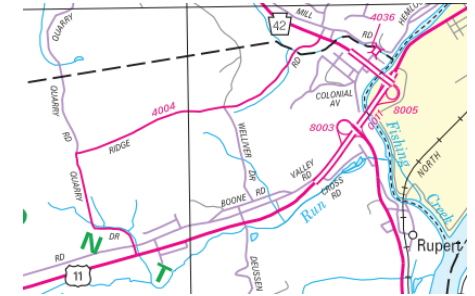
Ramp Segment Number and Ramp Segment Length Information:

Segment	Length	Segment	Length	Segment	Length	Segment	Length
0010	1487						
0020	1395						
0250	0541						
0500	0350						

Primary Route  
Interchange Exit  
Number

Secondary Route  
Interchange Exit  
Number

PennDOT Type 10 Map View:



Feedback

200 ft 50 m  
© 2022 TomTom, © Vexcel Imaging

© 2023 Microsoft

Last Date Modified:

Feb 28, 2023

County: 19

# RMS Interchange Information

Print Form

Bureau of Maintenance & Operations  
Asset Management Division



Interchange Number: 8006

Interchange Name: LIME RIDGE & BERWICK INT

Intersecting SR's: I-80 & US 11

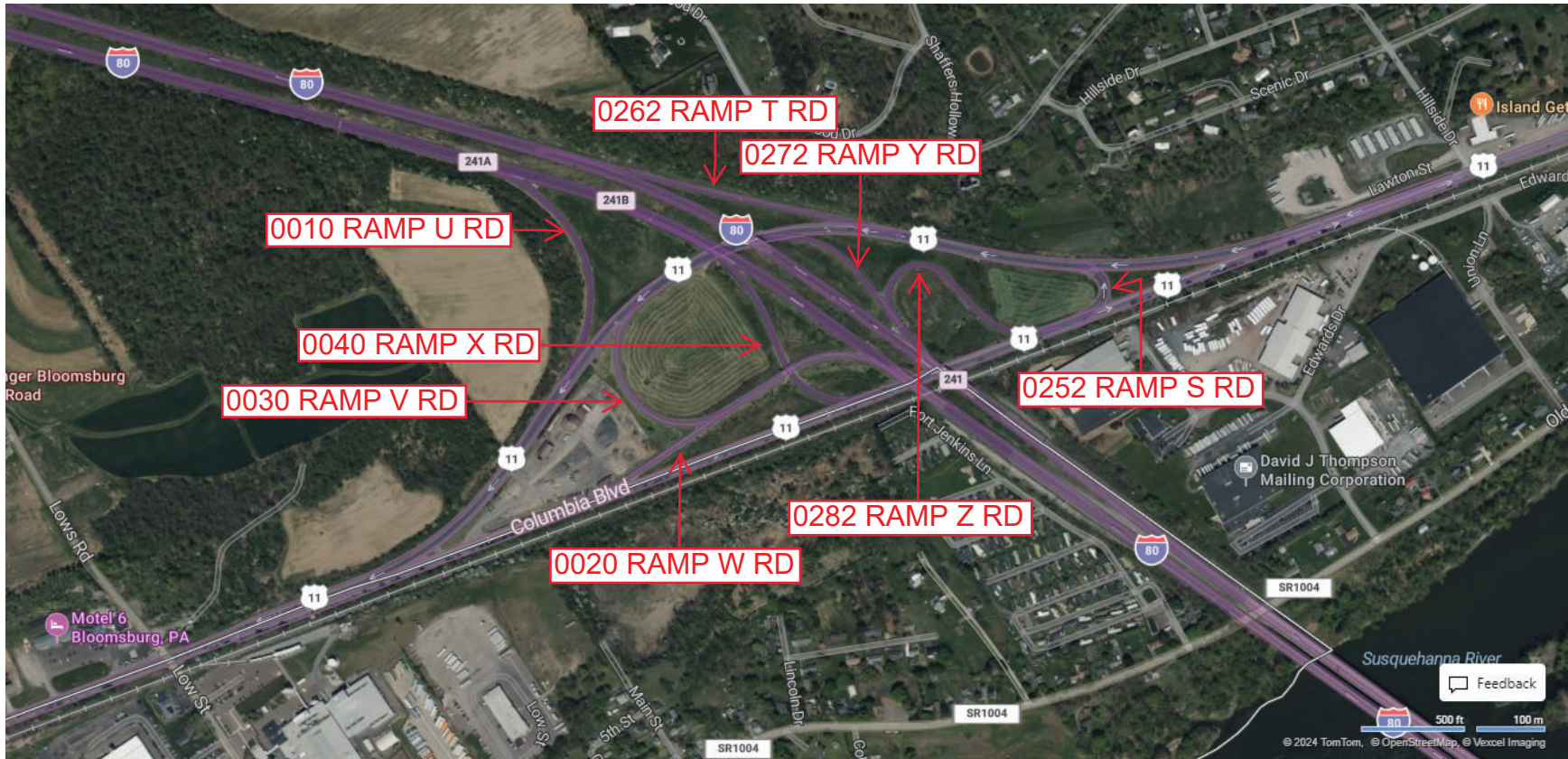
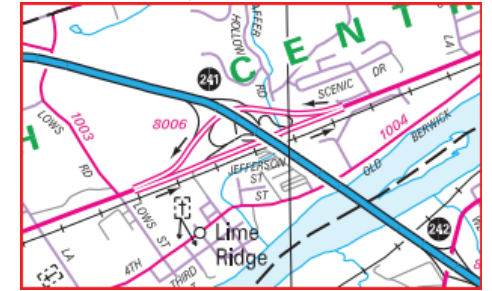
Ramp Segment Number and Ramp Segment Length Information:

Segment	Length	Segment	Length	Segment	Length	Segment	Length
0010	1016	0262	0984				
0020	1290	0272	0761				
0030	0764	0282	0892				
0040	0885						
0252	0158						

Primary Route Interchange Exit Number: 241A

Secondary Route Interchange Exit Number: 241B

PennDOT Type 10 Map View:



Privacy Choices Consumer Health Privacy

© 2025 Microsoft

Last Date Modified: Jan 17, 2025

County: 19

# RMS Interchange Information

Bureau of Maintenance & Operations  
Asset Management Division

Print Form



Interchange Number: 8008

Interchange Name: MIFFLINVILLE & MAINVILLE INT

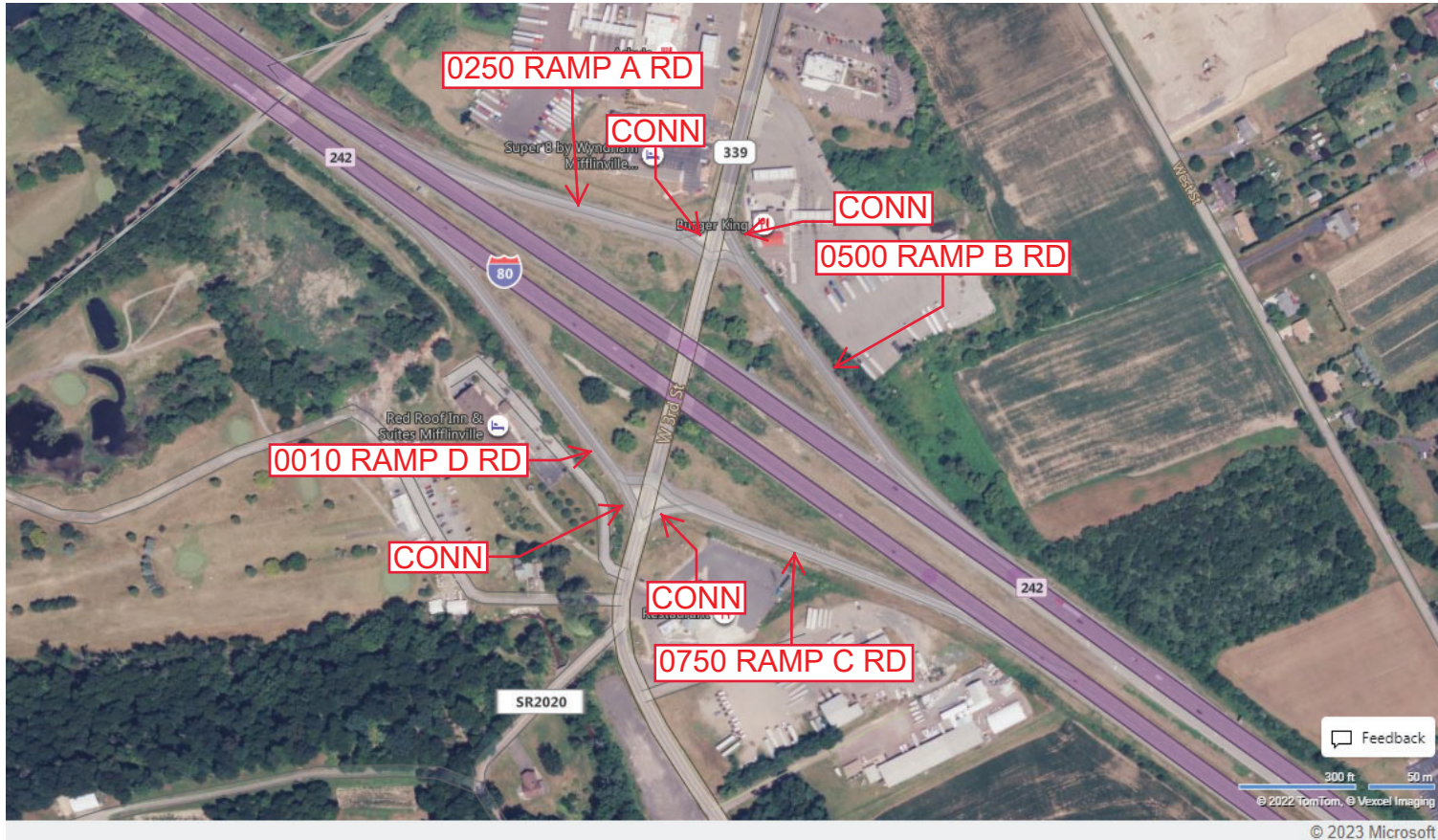
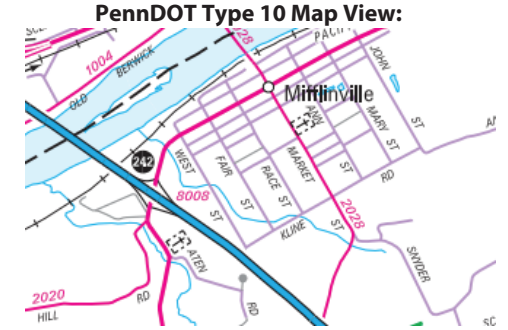
Intersecting SR's: I-80 & PA 339 Mifflinville Rd

Ramp Segment Number and Ramp Segment Length Information:

Segment	Length	Segment	Length	Segment	Length	Segment	Length
0010	0763						
0250	0704						
0500	0751						
0750	0802						

Primary Route Interchange Exit Number: 242

Secondary Route Interchange Exit Number



Last Date Modified:

Feb 28, 2023

County: 19

# RMS Interchange Information

Print Form

Interchange Number: 9201

Bureau of Maintenance & Operations  
Asset Management Division



Interchange Name: ROADSIDE REST AREA WB

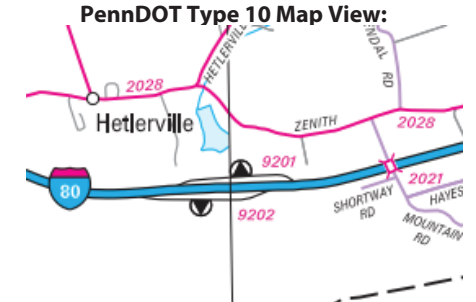
Intersecting SR's: I-80 Roadside Rest Area

Ramp Segment Number and Ramp Segment Length Information:

Segment	Length	Segment	Length	Segment	Length	Segment	Length
0010	3026						
0020	1770						

Primary Route Interchange Exit Number

Secondary Route Interchange Exit Number



Last Date Modified: Feb 28, 2023

County: 19

# RMS Interchange Information

Print Form

Interchange Number: 9202

Bureau of Maintenance & Operations  
Asset Management Division



Interchange Name: ROADSIDE REST AREA EB

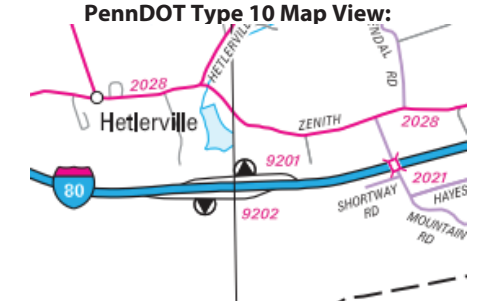
Intersecting SR's: I-80 Roadside Rest Area

Ramp Segment Number and Ramp Segment Length Information:

Segment	Length	Segment	Length	Segment	Length	Segment	Length
0010	2519						
0020	1731						

Primary Route Interchange Exit Number

Secondary Route Interchange Exit Number



Last Date Modified:

Mar 3, 2023



County: 19

# RMS Interchange Information

Print Form

Interchange Number: 9402

Bureau of Maintenance & Operations  
Asset Management Division



Interchange Name: PA 61

Intersecting SR's: PA 61

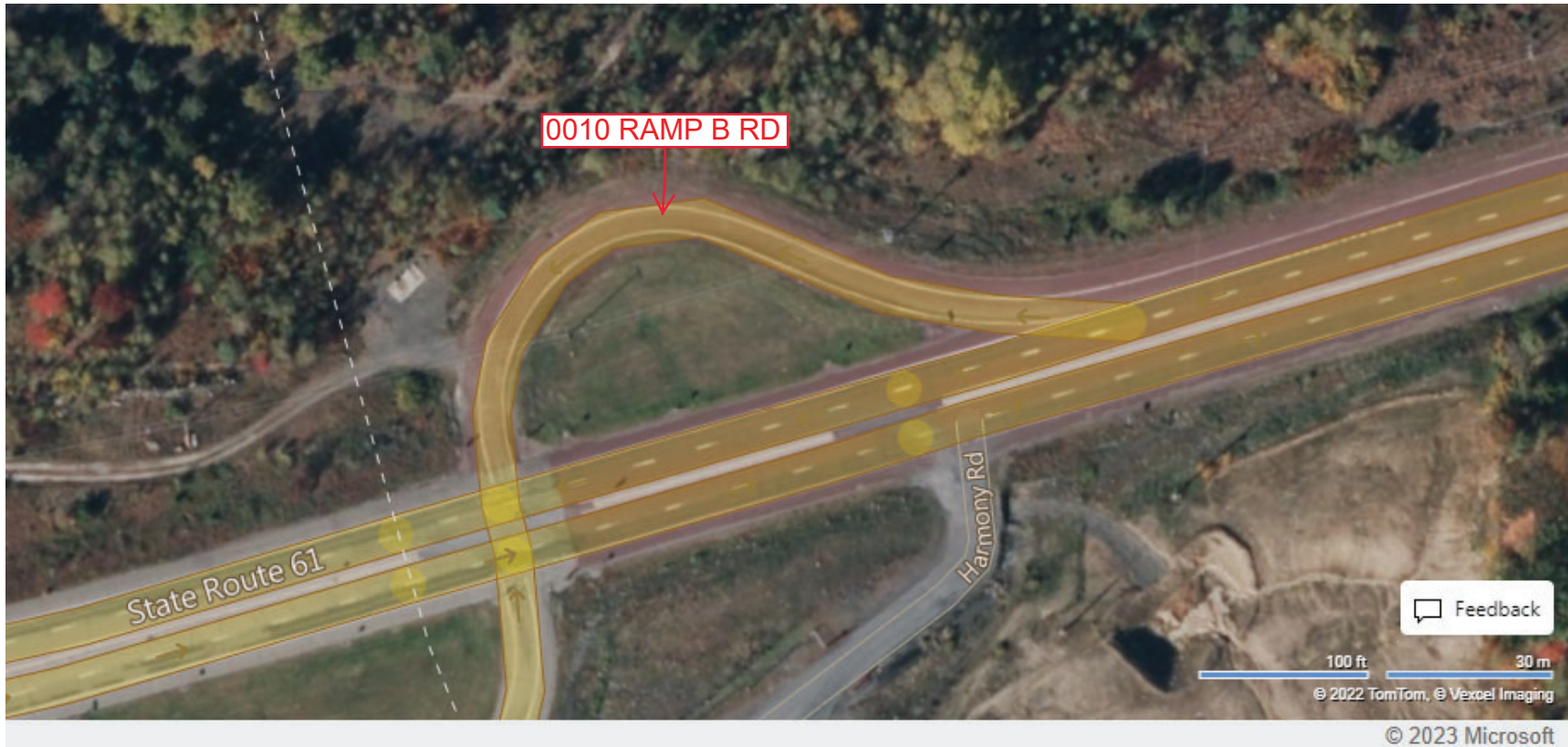
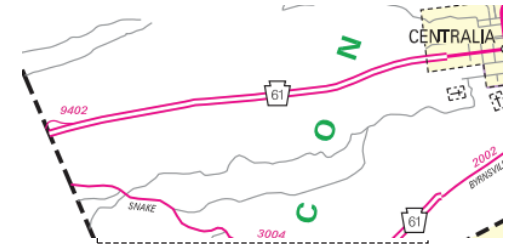
Ramp Segment Number and Ramp Segment Length Information:

Segment	Length	Segment	Length	Segment	Length	Segment	Length
0500	0410						

Primary Route Interchange Exit Number

Secondary Route Interchange Exit Number

PennDOT Type 10 Map View:



Last Date Modified:

Mar 3, 2023

County: 19

# RMS Interchange Information

Print Form

Interchange Number: 9502

Bureau of Maintenance & Operations  
Asset Management Division



Interchange Name: FISHING CREEK PARK & RIDE

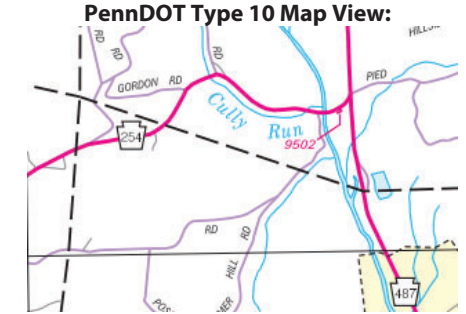
Intersecting SR's: PA 254 SH

Ramp Segment Number and Ramp Segment Length Information:

Segment	Length	Segment	Length	Segment	Length	Segment	Length
0010	0104						

Primary Route  
Interchange Exit  
Number

Secondary Route  
Interchange Exit  
Number



0010 FISHING CREEK PARK & RIDE

Last Date Modified:

Aug 8, 2024