

County: 41

RMS Interchange Information

Print Form

Interchange Number: 8001

Bureau of Maintenance & Operations
Asset Management Division



Interchange Name: MARKET ST INT

Intersecting SR's: I-180 & US 15 Market St

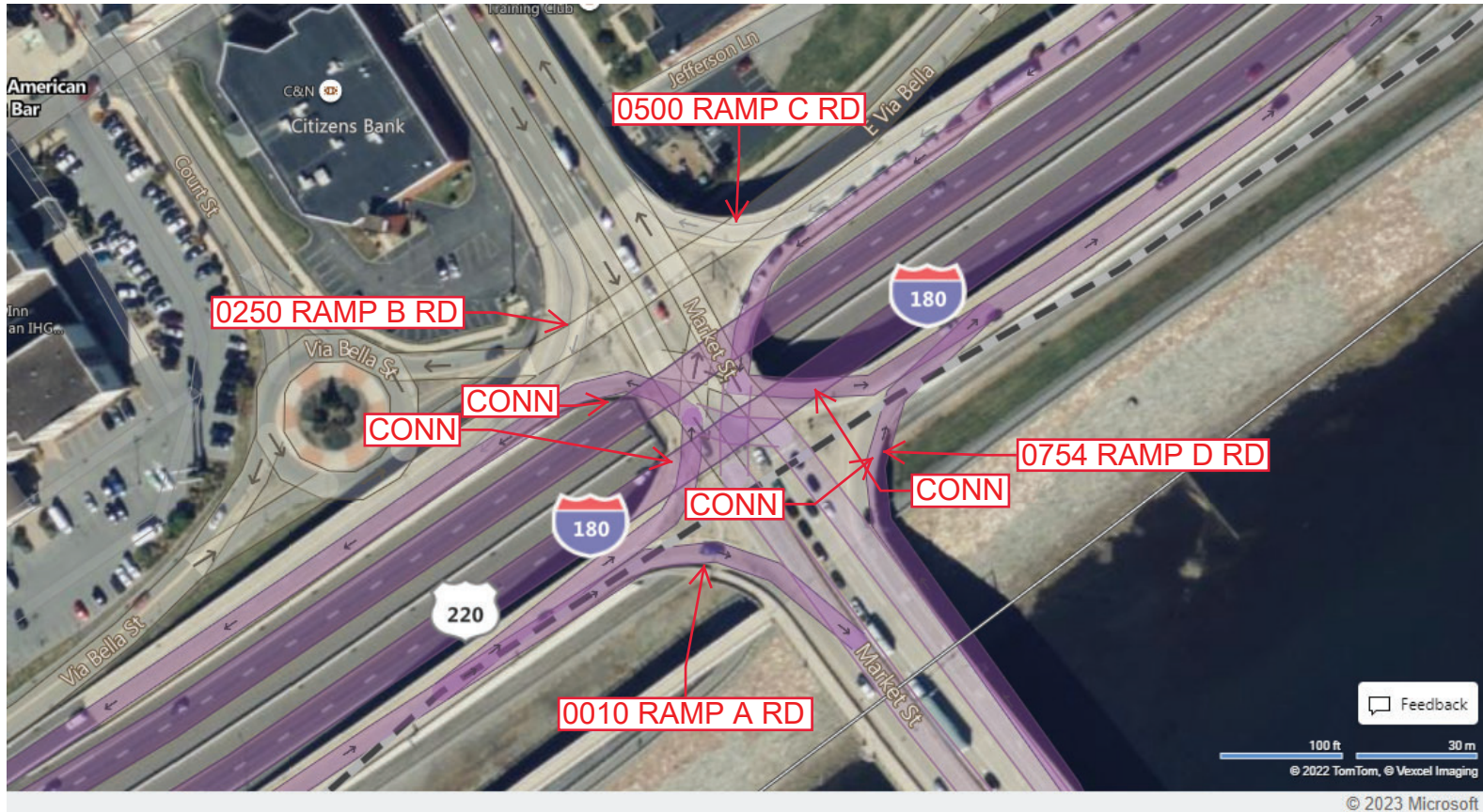
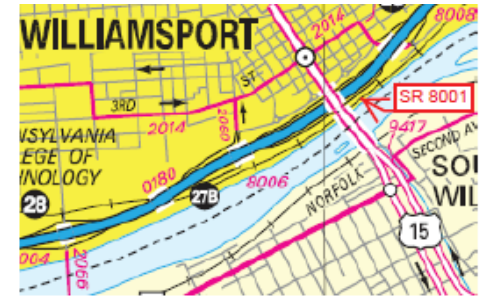
Ramp Segment Number and Ramp Segment Length Information:

Segment	Length	Segment	Length	Segment	Length	Segment	Length
0010	0564						
0250	0606						
0500	0574						
0754	0548						

Primary Route Interchange Exit Number: 27A

Secondary Route Interchange Exit Number

PennDOT Type 10 Map View:



Feedback
100 ft 30 m
© 2022 TomTom, © Vexcel Imaging
© 2023 Microsoft

Last Date Modified: Mar 6, 2023

County: 41

RMS Interchange Information

Print Form

Interchange Number: 8002

Bureau of Maintenance & Operations
Asset Management Division



Interchange Name: MANSFIELD INT

Intersecting SR's: I-180, US 15 & US 220 Third St

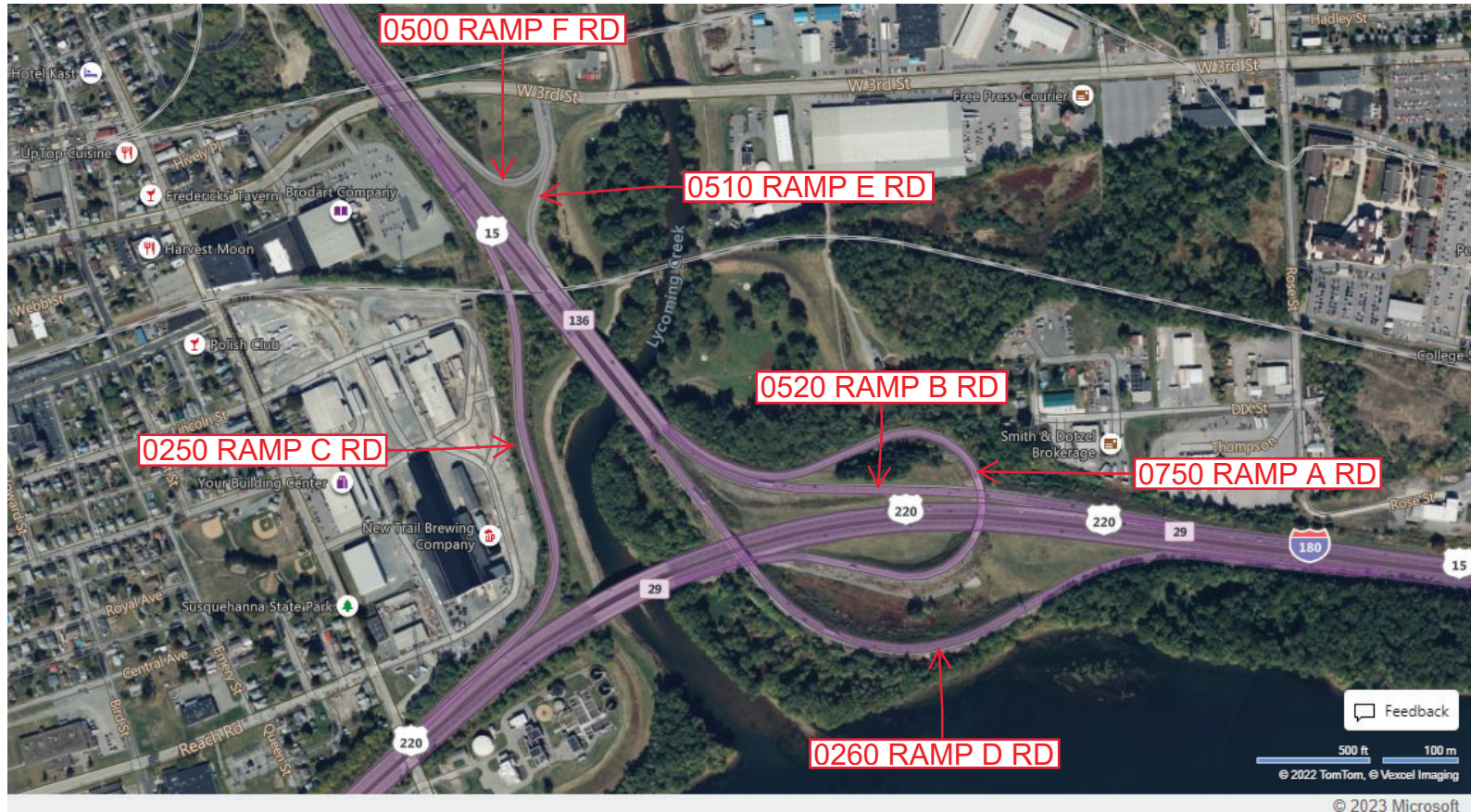
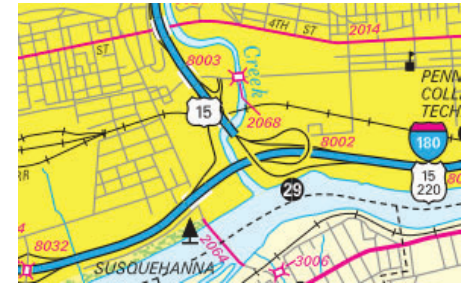
Ramp Segment Number and Ramp Segment Length Information:

Segment	Length	Segment	Length	Segment	Length	Segment	Length
0250	1916	0750	2255				
0260	2780						
0500	0841						
0510	0678						
0520	1678						

Primary Route Interchange Exit Number: 29

Secondary Route Interchange Exit Number

PennDOT Type 10 Map View:



Last Date Modified: Mar 6, 2023

County: 41

RMS Interchange Information

Print Form

Interchange Number: 8003

Bureau of Maintenance & Operations
Asset Management Division



Interchange Name: WEST FOURTH ST INT

Intersecting SR's: US 15 & SR 2014 Fourth St

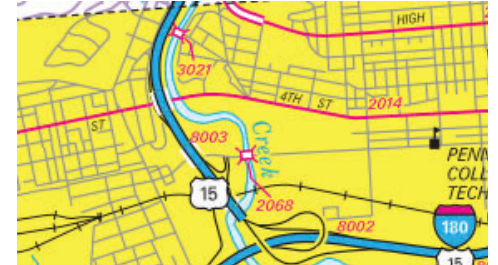
Ramp Segment Number and Ramp Segment Length Information:

Segment	Length	Segment	Length	Segment	Length	Segment	Length
0250	0700						
0500	0703						

Primary Route Interchange Exit Number

Secondary Route Interchange Exit Number

PennDOT Type 10 Map View:



Feedback

200 ft 50 m
© 2022 TomTom, © Vexcel Imaging

© 2023 Microsoft

Last Date Modified: Mar 6, 2023

County: 41

RMS Interchange Information

Print Form

Interchange Number: 8004

Bureau of Maintenance & Operations
Asset Management Division



Interchange Name: MAYNARD ST INT

Intersecting SR's: US-180 & Maynard St

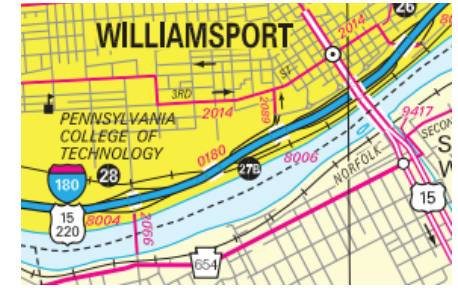
Ramp Segment Number and Ramp Segment Length Information:

Segment	Length	Segment	Length	Segment	Length	Segment	Length
0010	0920						
0250	0728						
0500	0955						
0750	0934						

Primary Route Interchange Exit Number: 28

Secondary Route Interchange Exit Number

PennDOT Type 10 Map View:



Feedback

200 ft 50 m
© 2022 TomTom, © Vexcel Imaging

© 2023 Microsoft

Last Date Modified:

Mar 6, 2023

County: **41**

RMS Interchange Information

Print Form

Interchange Number: **8005**

Bureau of Maintenance & Operations
Asset Management Division



Interchange Name: **FOY AVENUE INT**

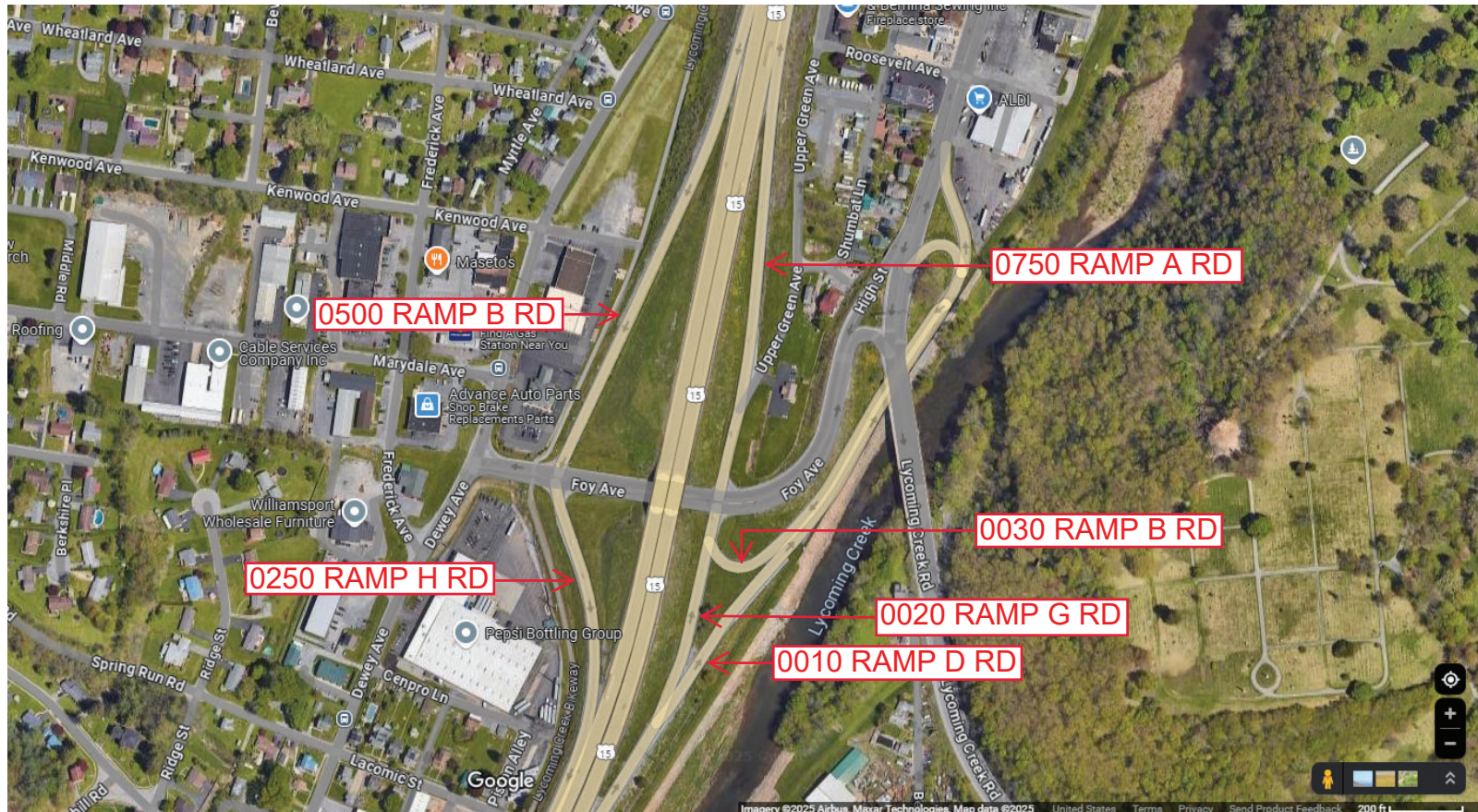
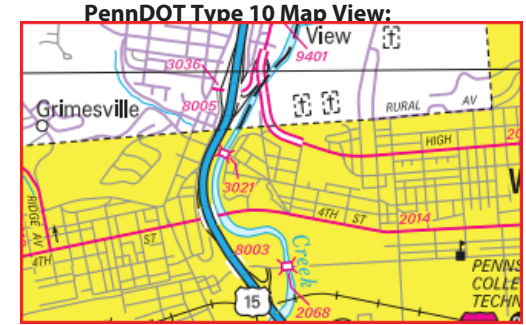
Intersecting SR's: **US 15, SR 2016 High St, SR 3036 Foy Av & T438 Green Av**

Ramp Segment Number and Ramp Segment Length Information:

Segment	Length	Segment	Length	Segment	Length	Segment	Length
0010	2081	0750	1048				
0020	0433						
0030	1282						
0250	0595						
0500	1208						

Primary Route Interchange Exit Number

Secondary Route Interchange Exit Number



Last Date Modified: **Jan 17, 2025**

County: 41

RMS Interchange Information

Print Form

Interchange Number: 8006

Bureau of Maintenance & Operations
Asset Management Division



Interchange Name: HEPBURN ST INT

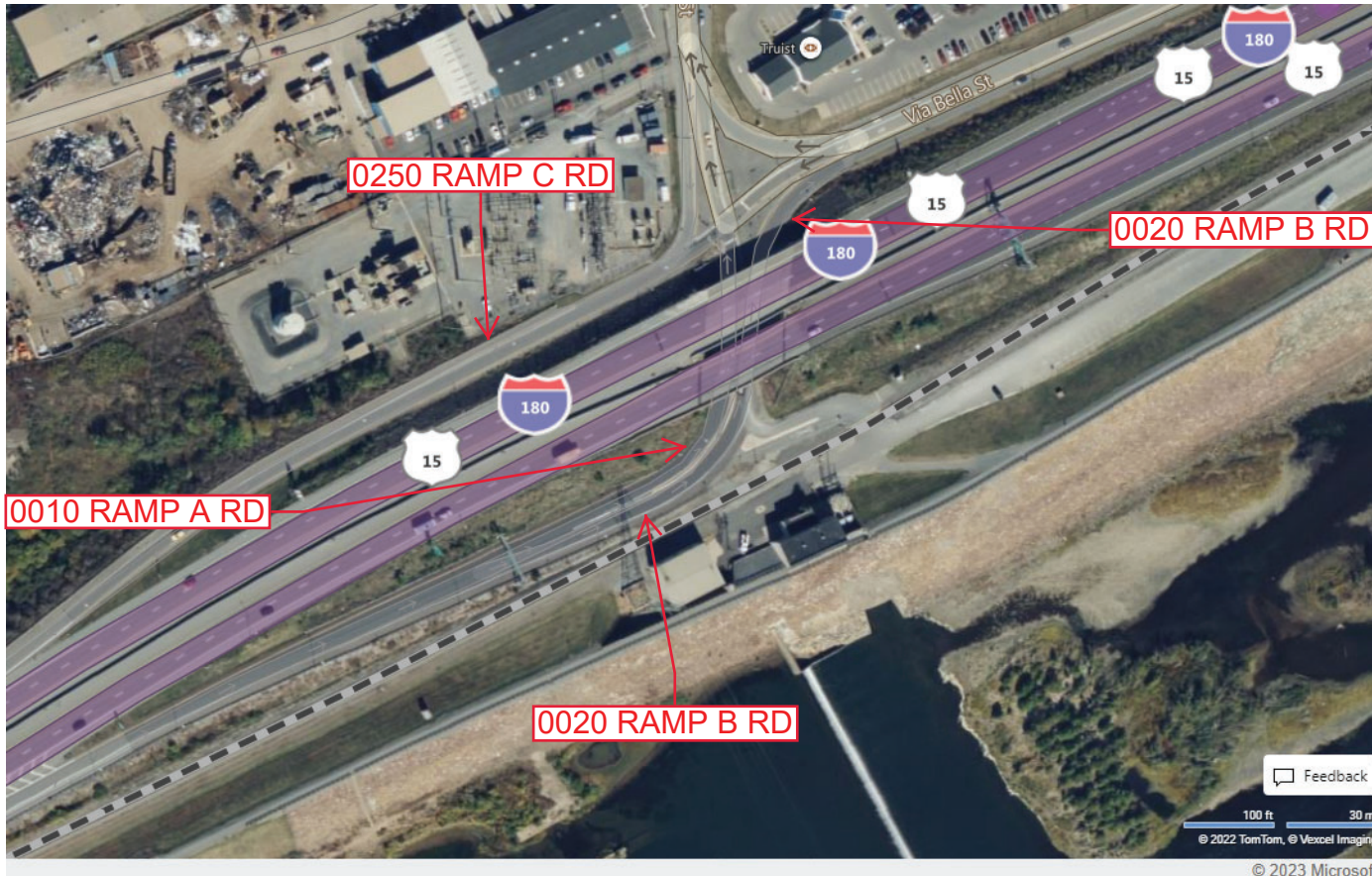
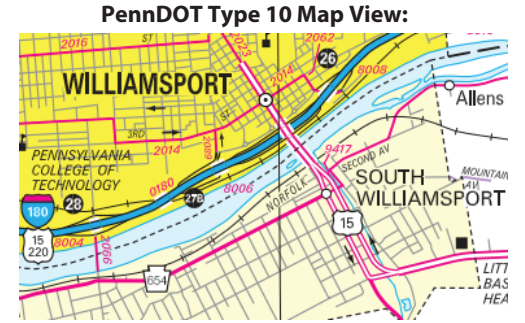
Intersecting SR's: I-180, SR 2089 Hepburn St & CITY Via Bella Dr

Ramp Segment Number and Ramp Segment Length Information:

Segment	Length	Segment	Length	Segment	Length	Segment	Length
0010	1137						
0020	0331						
0250	1006						

Primary Route Interchange Exit Number: 27B

Secondary Route Interchange Exit Number



Last Date Modified: Mar 7, 2023

County: 41

RMS Interchange Information

Bureau of Maintenance & Operations
Asset Management Division

Print Form



Interchange Number: 8008

Interchange Name: BASIN ST INT

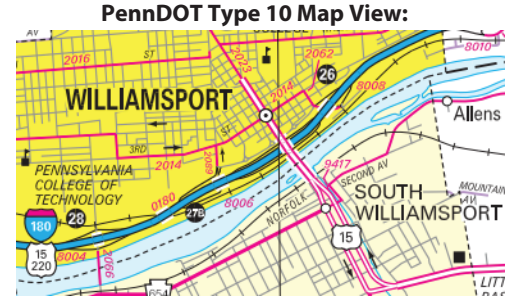
Intersecting SR's: I-180, SR 2062 Basin St, Jefferson Ln & Via Bella St

Ramp Segment Number and Ramp Segment Length Information:

Segment	Length	Segment	Length	Segment	Length	Segment	Length
0500	0595						
0750	0755						

Primary Route Interchange Exit Number: 26

Secondary Route Interchange Exit Number



Feedback
100 ft 50 m
© 2022 TomTom, © Vexcel Imaging
© 2023 Microsoft

Last Date Modified: Mar 8, 2023

County: 41

RMS Interchange Information

Print Form

Bureau of Maintenance & Operations
Asset Management Division



Interchange Number: 8009

Interchange Name: TROUT RUN INT

Intersecting SR's: US 15, PA 14, T832Confair Ln & T836 Truman St

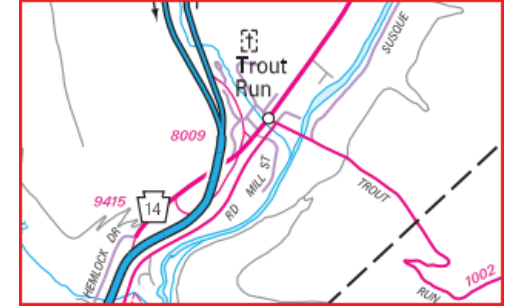
Ramp Segment Number and Ramp Segment Length Information:

Segment	Length	Segment	Length	Segment	Length	Segment	Length
0010	0644						
0250	0440						
0750	2280						
0760	1707						

Primary Route Interchange Exit Number

Secondary Route Interchange Exit Number

PennDOT Type 10 Map View:



Last Date Modified: Jan 7, 2025

County: 41

RMS Interchange Information

Print Form

Interchange Number: 8010

Bureau of Maintenance & Operations
Asset Management Division



Interchange Name: FAXON INT

Intersecting SR's: I-180, SR 2029 Northway Rd & SR 2056 Shiffler Ave

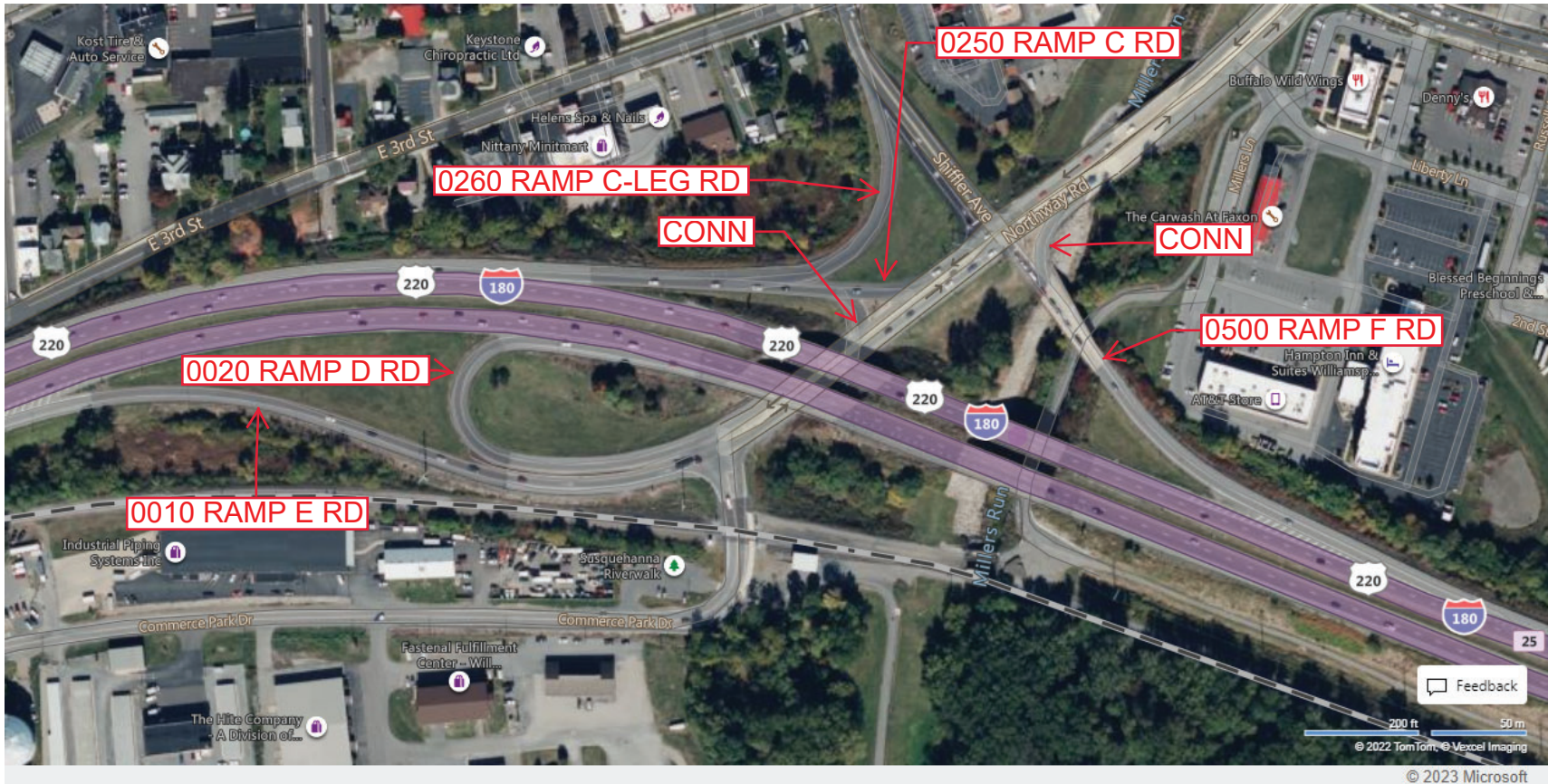
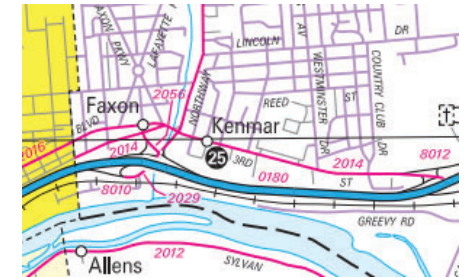
Ramp Segment Number and Ramp Segment Length Information:

Segment	Length	Segment	Length	Segment	Length	Segment	Length
0010	0797						
0020	0261						
0250	0547						
0260	0337						
0500	0638						

Primary Route Interchange Exit Number: 25

Secondary Route Interchange Exit Number

PennDOT Type 10 Map View:



Last Date Modified: Mar 8, 2023

County: 41

RMS Interchange Information

Bureau of Maintenance & Operations
Asset Management Division

Print Form



Interchange Number: 8012

Interchange Name: MONTOURSVILLE INT

Intersecting SR's: I-180, SR 2014 Third St & T460 Old Montoursville Rd

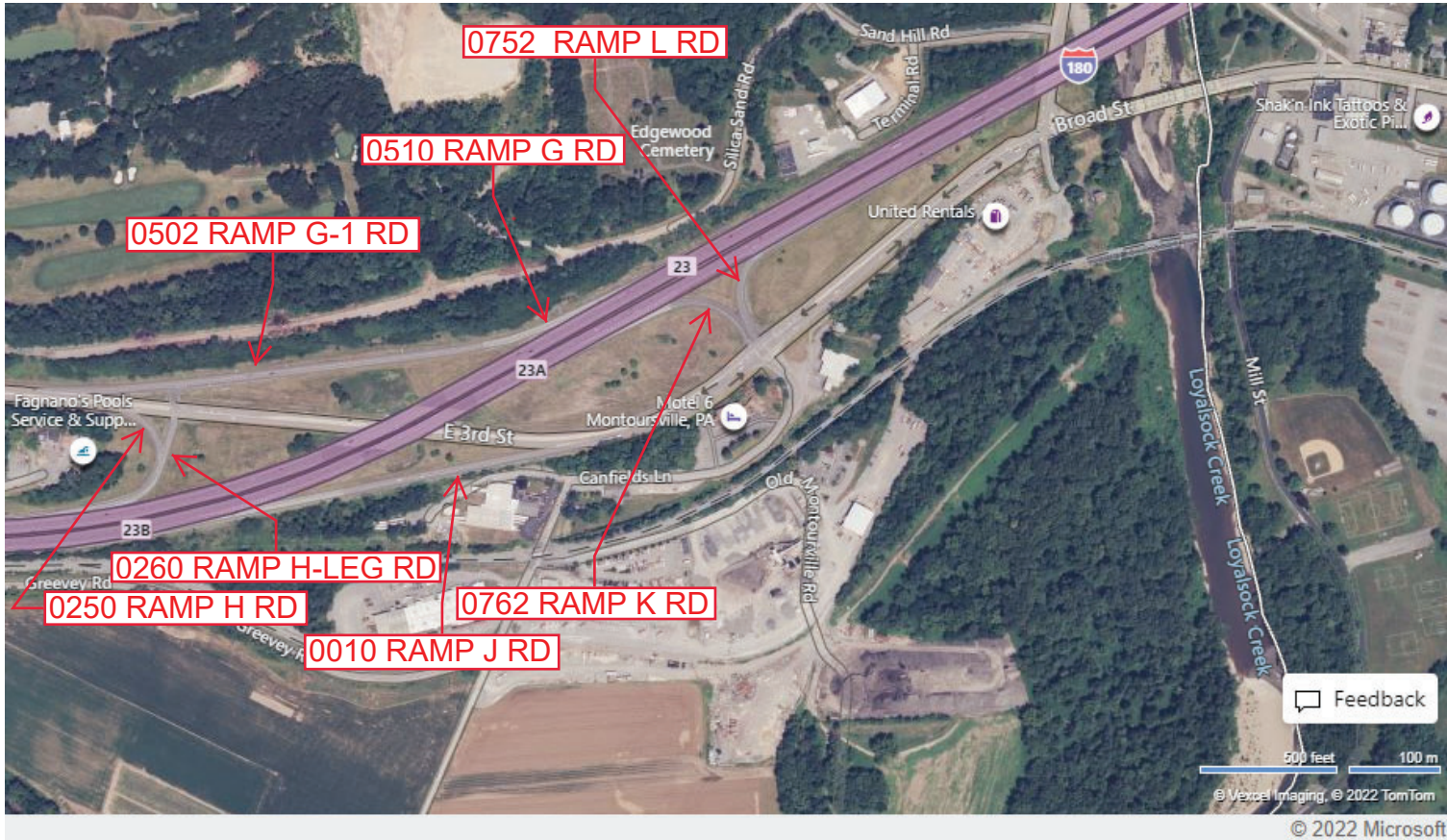
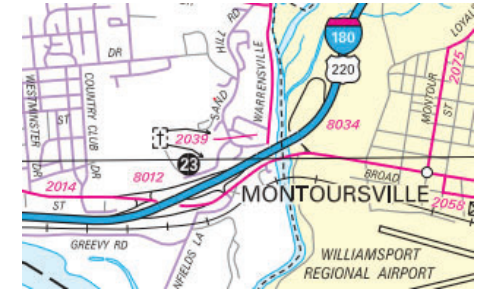
Ramp Segment Number and Ramp Segment Length Information:

Segment	Length	Segment	Length	Segment	Length	Segment	Length
0010	1087	0752	0340				
0250	0412	0762	0407				
0260	0116						
0502	0266						
0510	1502						

Primary Route Interchange Exit Number: 23A

Secondary Route Interchange Exit Number: 23B

PennDOT Type 10 Map View:



Last Date Modified: Apr 29, 2022

County: 41

RMS Interchange Information

Print Form

Interchange Number: 8013

Bureau of Maintenance & Operations
Asset Management Division



Interchange Name: BUTTONWOOD INT

Intersecting SR's: US 15, PA 284 & SR 1009 Blockhouse Rd

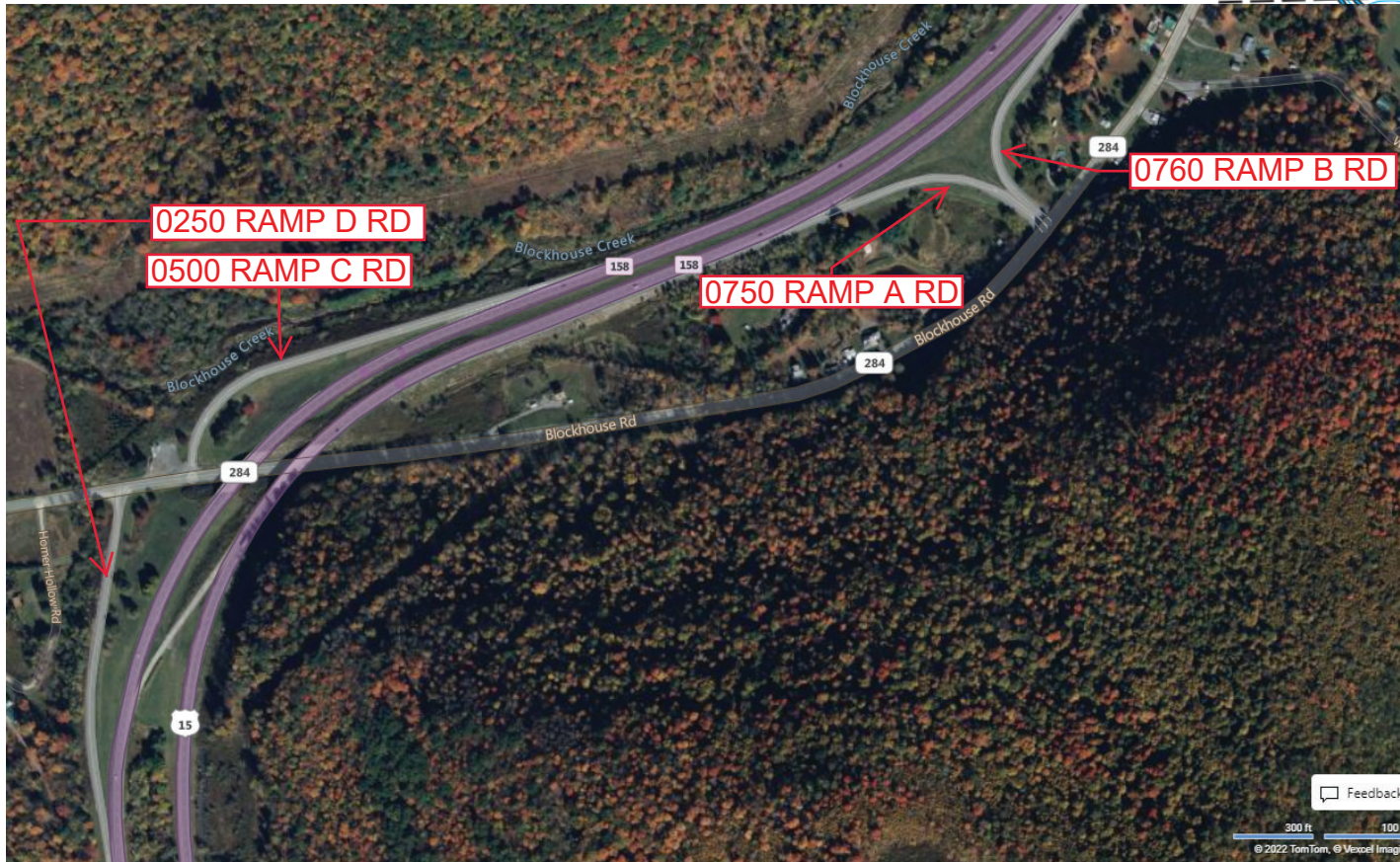
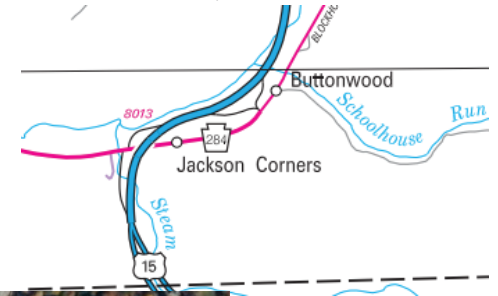
Ramp Segment Number and Ramp Segment Length Information:

Segment	Length	Segment	Length	Segment	Length	Segment	Length
0250	1397						
0500	1306						
0750	0874						
0760	0800						

Primary Route Interchange Exit Number

Secondary Route Interchange Exit Number

PennDOT Type 10 Map View:



Feedback

300 ft 100 m

© 2022 TomTom, © Vexcel Imaging

© 2023 Microsoft

Last Date Modified: Mar 8, 2023

County: 41

RMS Interchange Information

Print Form

Interchange Number: 8014

Bureau of Maintenance & Operations
Asset Management Division



Interchange Name: MONTOUESVILLE INT

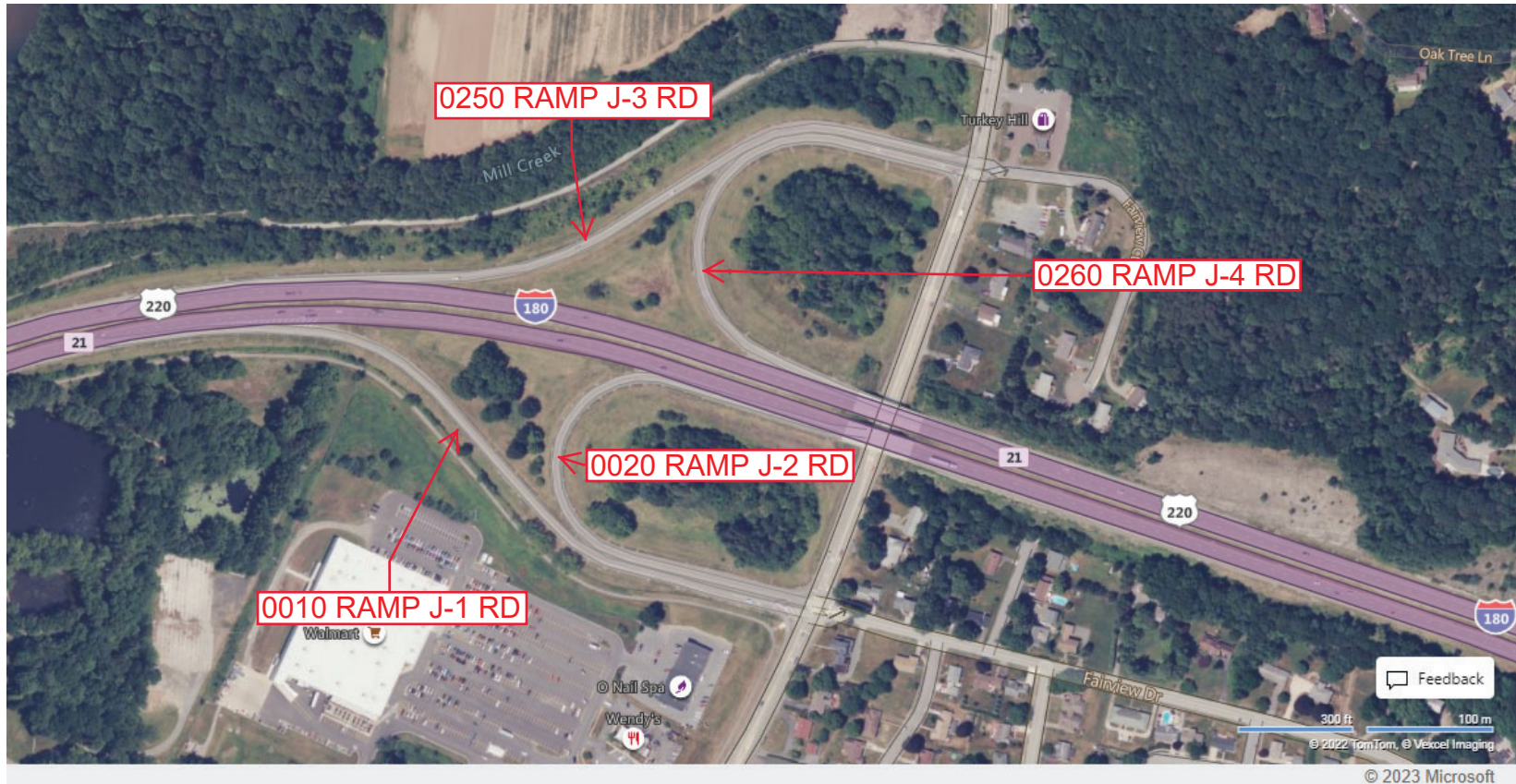
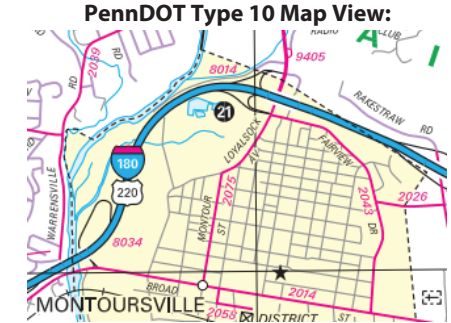
Intersecting SR's: I-180, PA 87, SR 2043 Fairview Dr & SR 2075 Loyalsock Av

Ramp Segment Number and Ramp Segment Length Information:

Segment	Length	Segment	Length	Segment	Length	Segment	Length
0010	1518						
0020	1171						
0250	1591						
0260	1267						

Primary Route Interchange Exit Number: 21

Secondary Route Interchange Exit Number



Last Date Modified:

Mar 9, 2023

County: **41**

RMS Interchange Information

Print Form

Interchange Number: **8015**

Bureau of Maintenance & Operations
Asset Management Division



Interchange Name: **BEAUTY RUN RD INT**

Intersecting SR's: **US 15 & SR 3026 Beauty Run Rd**

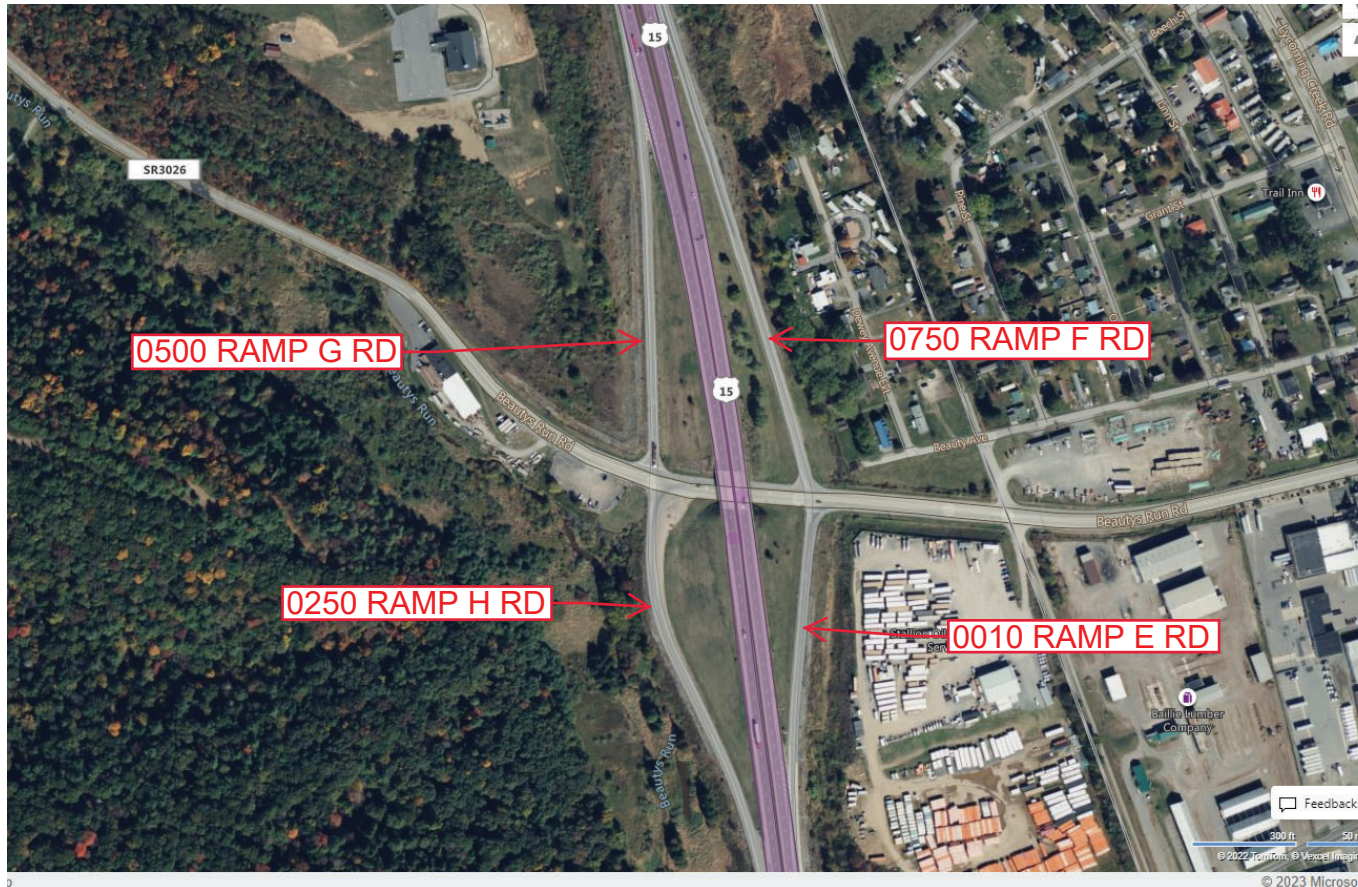
Ramp Segment Number and Ramp Segment Length Information:

Segment	Length	Segment	Length	Segment	Length	Segment	Length
0010	0748						
0250	1147						
0500	0955						
0750	1354						

Primary Route
Interchange Exit
Number

Secondary Route
Interchange Exit
Number

PennDOT Type 10 Map View:



Last Date Modified:

Mar 9, 2023

County: 41

RMS Interchange Information

Print Form

Interchange Number: 8016

Bureau of Maintenance & Operations
Asset Management Division



Interchange Name: FAIRFIELD RD INT

Intersecting SR's: I-180 & SR 2045 Fairfield Rd

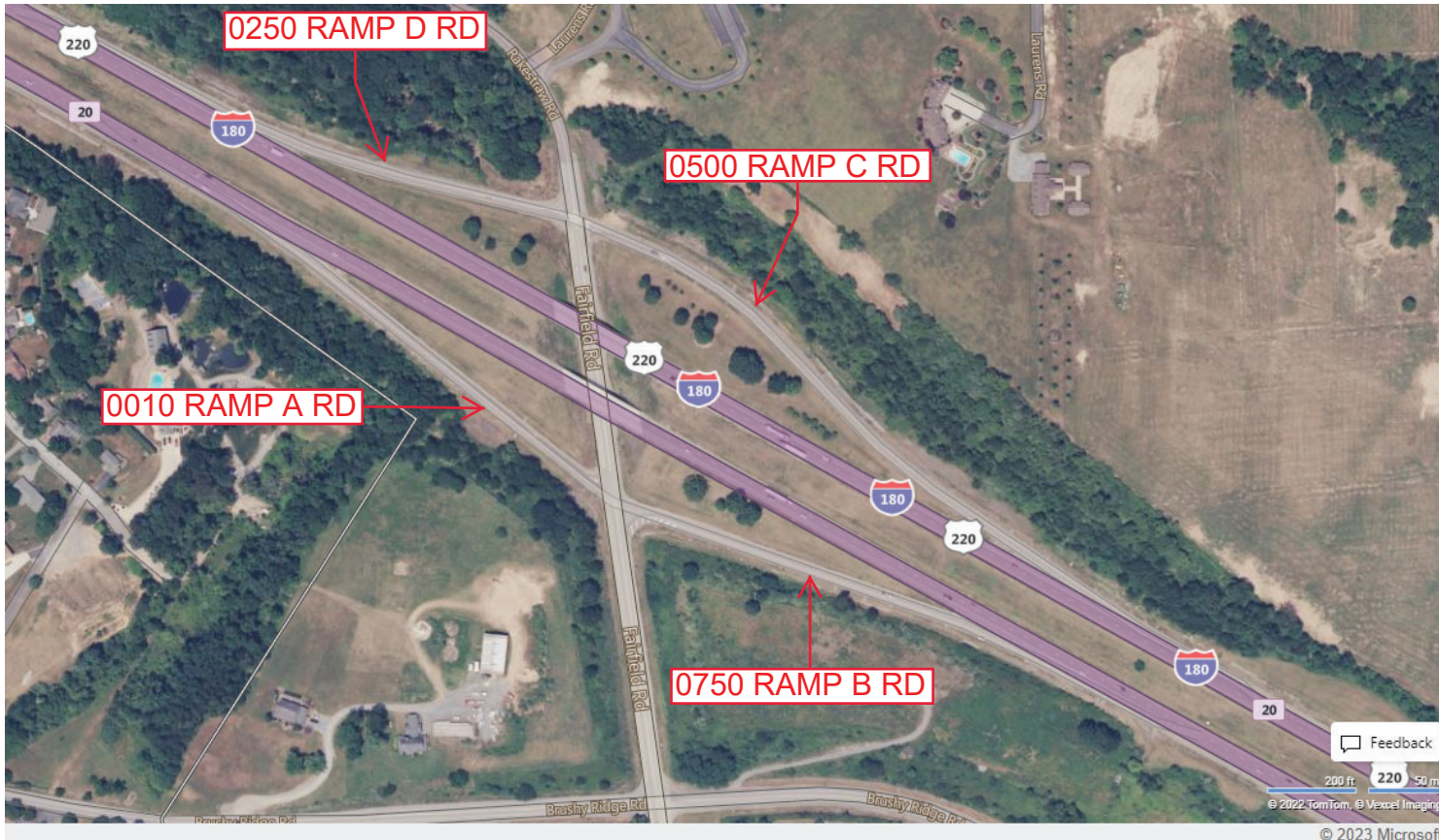
Ramp Segment Number and Ramp Segment Length Information:

Segment	Length	Segment	Length	Segment	Length	Segment	Length
0010	0854						
0250	0699						
0500	1257						
0750	0813						

Primary Route Interchange Exit Number: 20

Secondary Route Interchange Exit Number

PennDOT Type 10 Map View:



Last Date Modified: Mar 9, 2023

County: 41

RMS Interchange Information

Print Form

Interchange Number: 8017

Bureau of Maintenance & Operations
Asset Management Division



Interchange Name: PERRYVILLE INT

Intersecting SR's: US 15 & PA 973

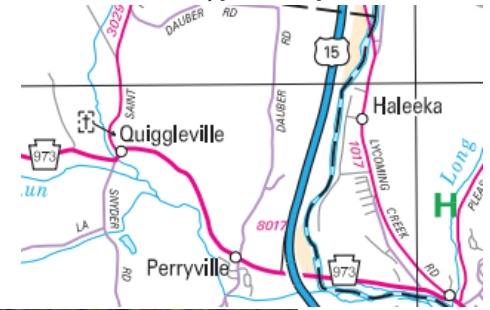
Ramp Segment Number and Ramp Segment Length Information:

Segment	Length	Segment	Length	Segment	Length	Segment	Length
0500	0834						

Primary Route Interchange Exit Number

Secondary Route Interchange Exit Number

PennDOT Type 10 Map View:



Feedback

300 ft 100 m
© 2022 TomTom, © Vexcel Imaging

© 2023 Microsoft

Last Date Modified: Mar 10, 2023

County: 41

RMS Interchange Information

Print Form

Interchange Number: 8018

Bureau of Maintenance & Operations
Asset Management Division



Interchange Name: LYCOMING MALL RD INT

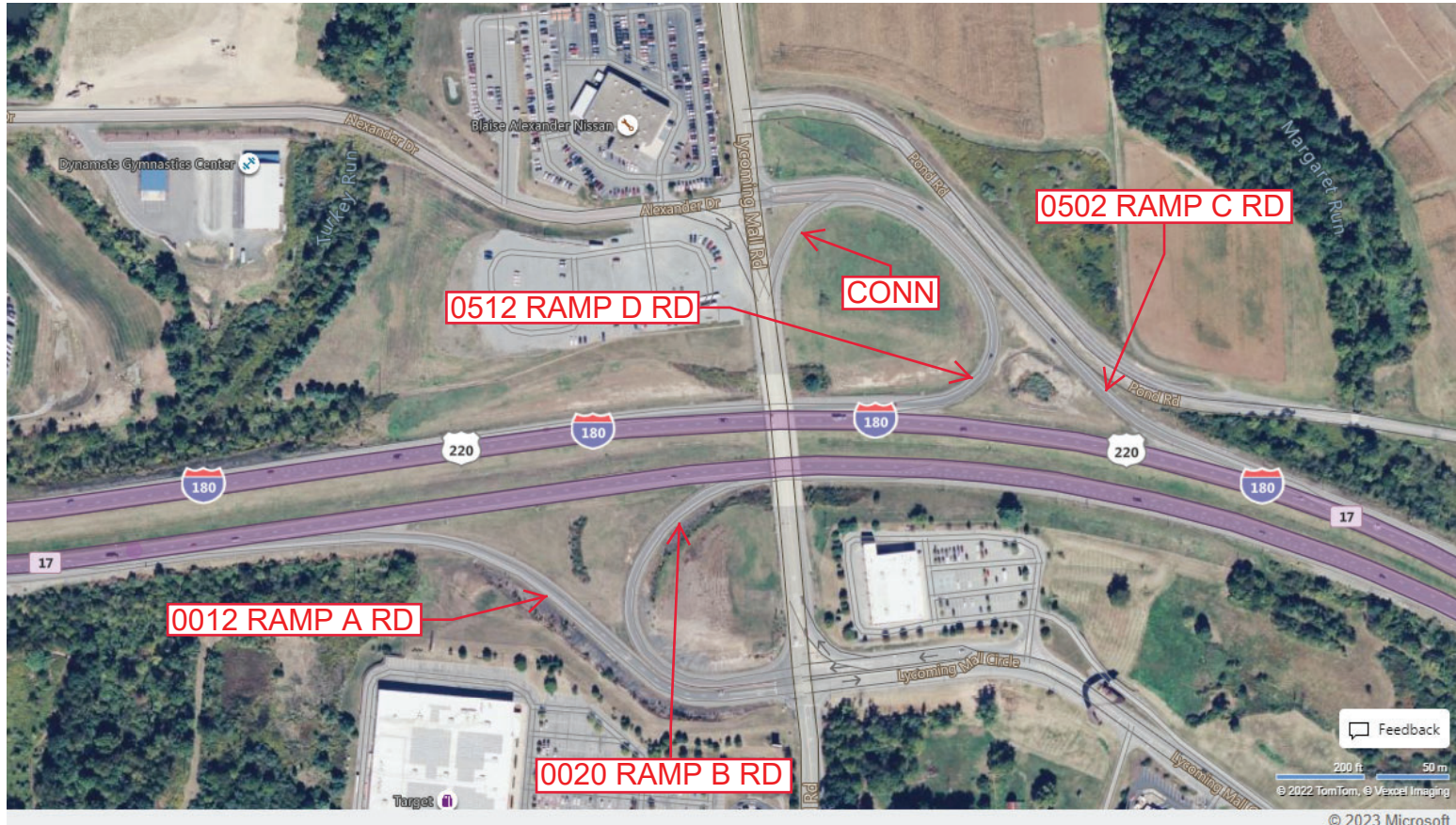
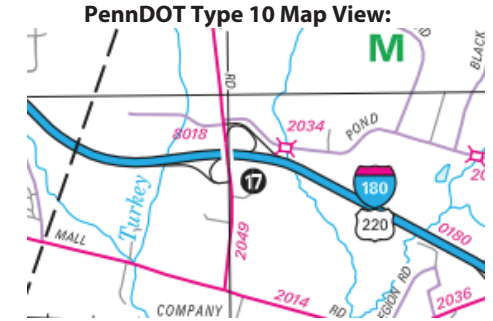
Intersecting SR's: 180, SR 2049 Lycoming Mall Rd & T500 Alexander Dr

Ramp Segment Number and Ramp Segment Length Information:

Segment	Length	Segment	Length	Segment	Length	Segment	Length
0012	1070						
0020	0811						
0502	1219						
0512	0980						

Primary Route Interchange Exit Number: 17

Secondary Route Interchange Exit Number



Feedback

200 ft 50 m
© 2022 TomTom, © Vexcel Imaging

© 2023 Microsoft

Last Date Modified: Mar 15, 2023

County: 41

RMS Interchange Information

Print Form

Interchange Number: 8019

Bureau of Maintenance & Operations
Asset Management Division



Interchange Name: COGAN HOUSE INT

Intersecting SR's: US 15 & SR 4011

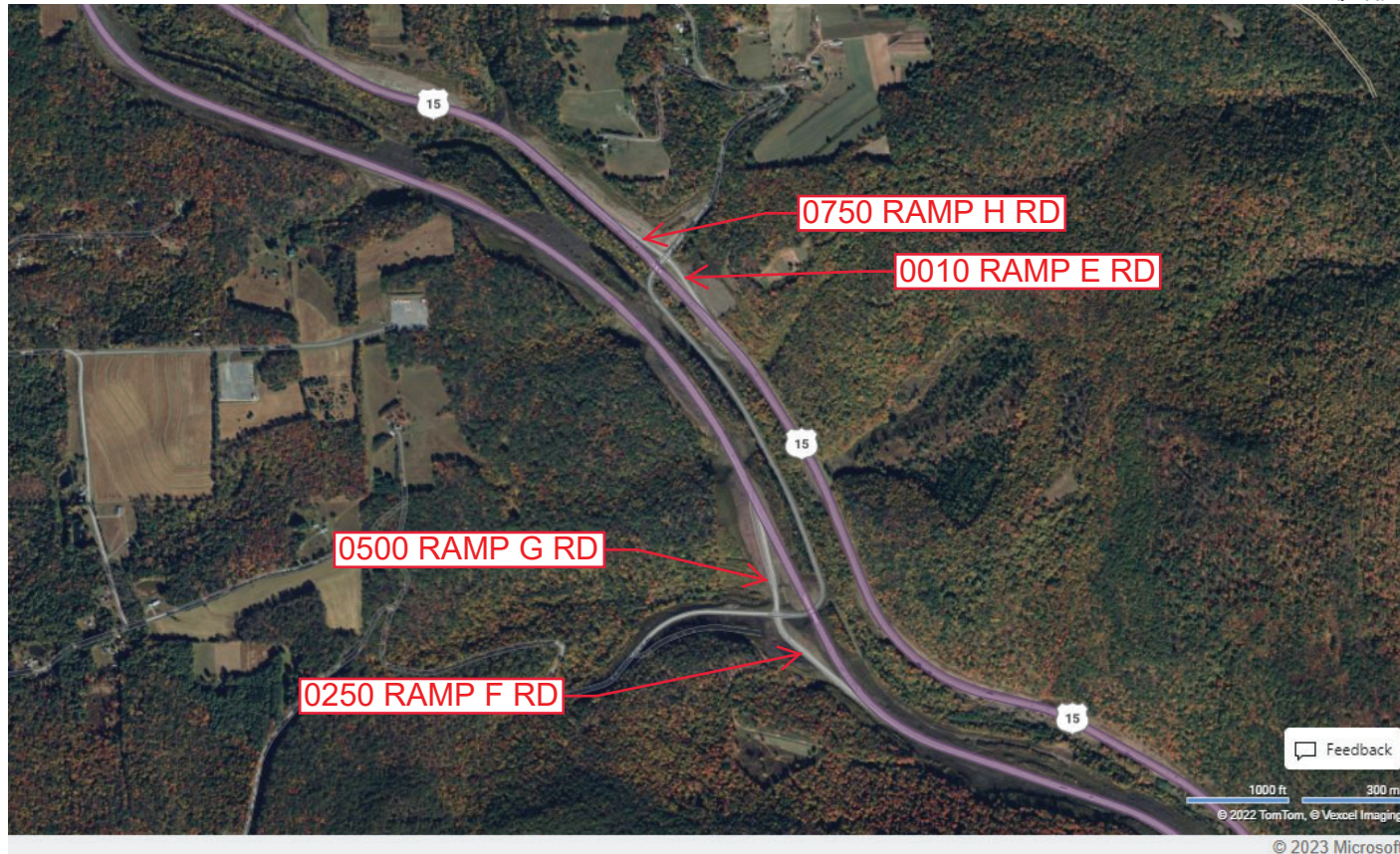
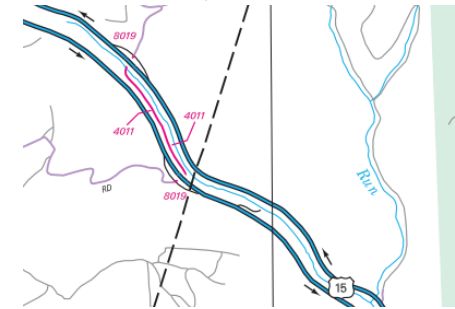
Ramp Segment Number and Ramp Segment Length Information:

Segment	Length	Segment	Length	Segment	Length	Segment	Length
0010	0622						
0250	1179						
0500	0951						
0750	0536						

Primary Route
Interchange Exit
Number

Secondary Route
Interchange Exit
Number

PennDOT Type 10 Map View:



Feedback

1000 ft 300 m
© 2022 TomTom, © Vexbel Imaging

© 2023 Microsoft

Last Date Modified:

Mar 17, 2023

County: 41

RMS Interchange Information

Print Form

Interchange Number: 8020

Bureau of Maintenance & Operations
Asset Management Division



Interchange Name: HALLS & PENNSDALE INT

Intersecting SR's: I-180, US 220 & SR 2036 Lycoming Mall Dr

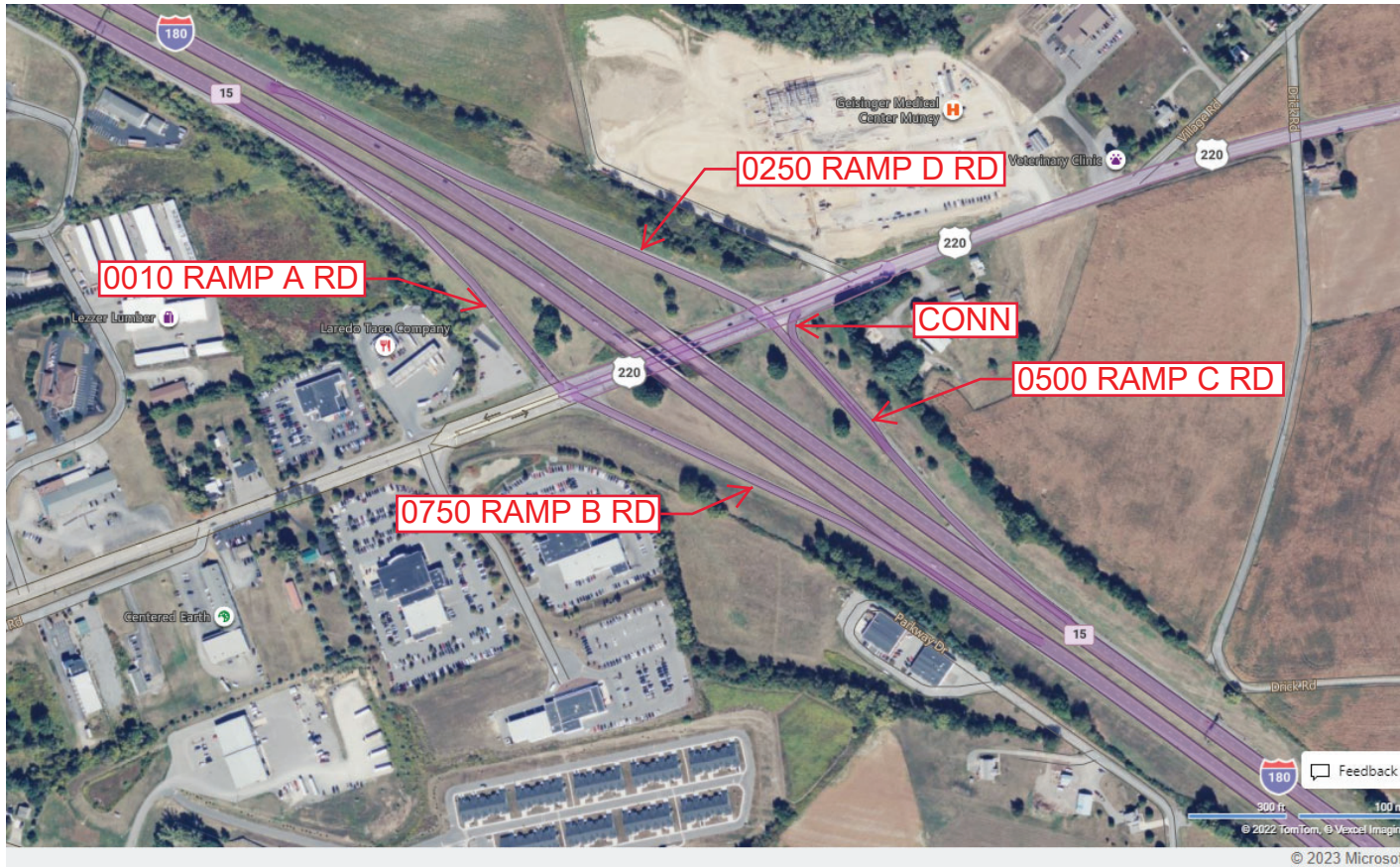
Ramp Segment Number and Ramp Segment Length Information:

Segment	Length	Segment	Length	Segment	Length	Segment	Length
0010	0879						
0250	1080						
0500	0915						
0750	1080						

Primary Route Interchange Exit Number: 15

Secondary Route Interchange Exit Number

PennDOT Type 10 Map View:



Last Date Modified:

Mar 17, 2023

County: 41

RMS Interchange Information

Print Form

Interchange Number: 8021

Bureau of Maintenance & Operations
Roadway Management Division



Interchange Name: STEAM VALLEY

Intersecting SR's: US 15 & PA 184 Beech Grove Rd

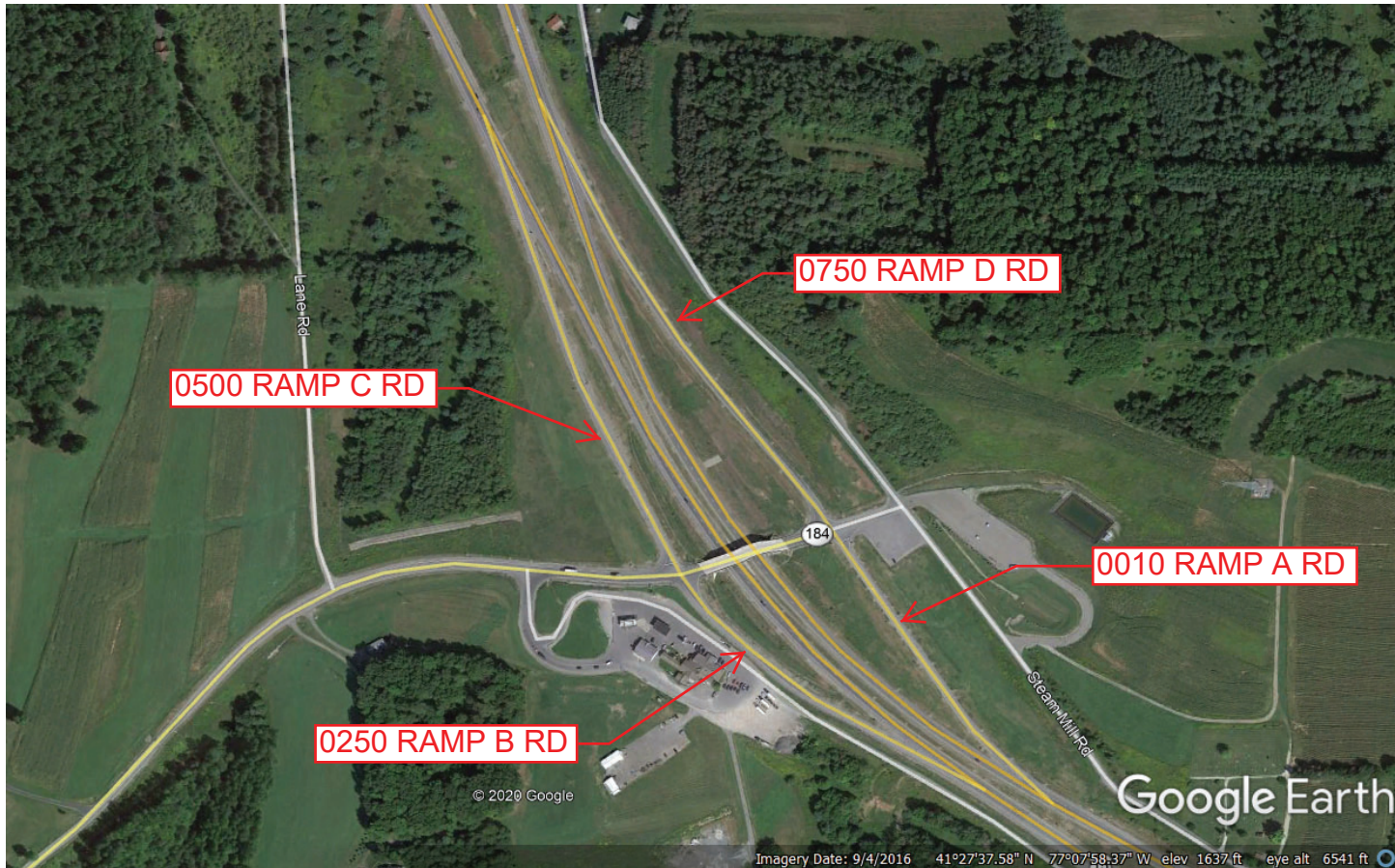
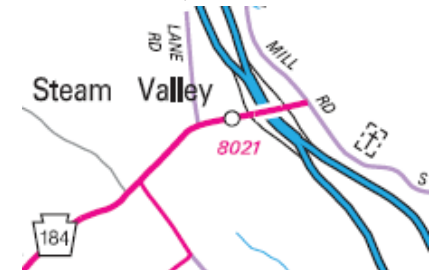
Ramp Segment Number and Ramp Segment Length Information:

Segment	Length	Segment	Length	Segment	Length	Segment	Length
0010	0950						
0250	0893						
0500	1205						
0750	1322						

Primary Route
Interchange Exit
Number

Secondary Route
Interchange Exit
Number

PennDOT Type 10 Map View:



Last Date Modified:

Apr 2, 2020

County: 41

RMS Interchange Information

Print Form

Interchange Number: 8022

Bureau of Maintenance & Operations
Asset Management Division



Interchange Name: MUNCY & HUGHESVILLE INT

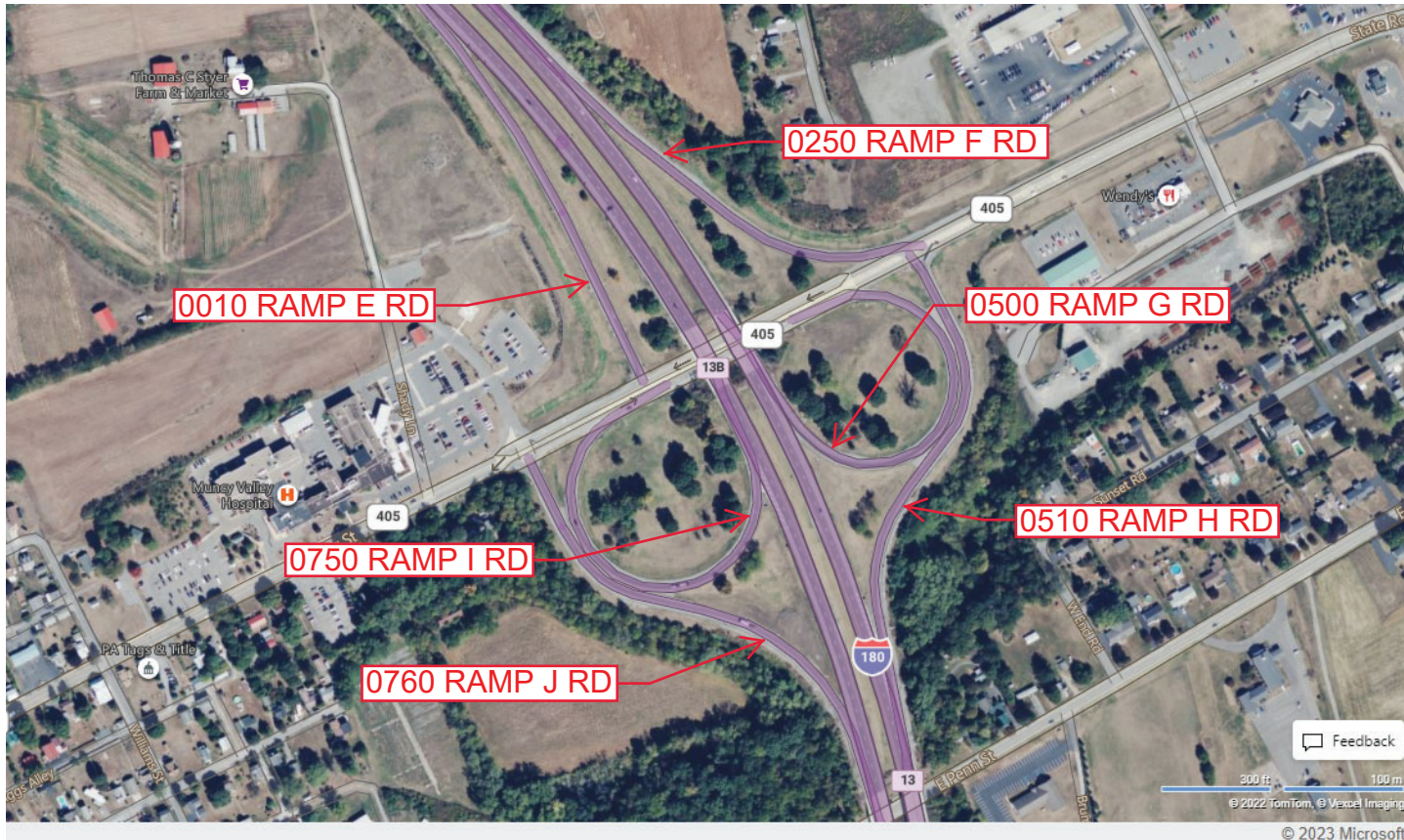
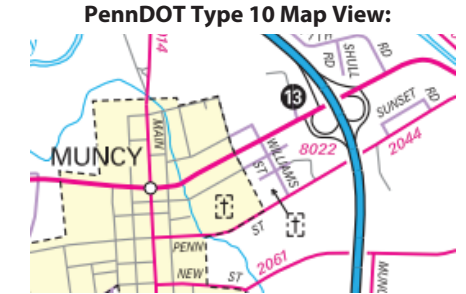
Intersecting SR's: I-180 & PA 405

Ramp Segment Number and Ramp Segment Length Information:

Segment	Length	Segment	Length	Segment	Length	Segment	Length
0010	1111	0760	1193				
0250	0971						
0500	0673						
0510	1119						
0750	1006						

Primary Route Interchange Exit Number: 13

Secondary Route Interchange Exit Number: 13A/13B



Last Date Modified:

Mar 20, 2023

County: 41

RMS Interchange Information

Print Form

Interchange Number: 8024

Bureau of Maintenance & Operations
Asset Management Division



Interchange Name: MUNCY INT

Intersecting SR's: I-180 & SR 2014 Susquehanna Trail Rd

Ramp Segment Number and Ramp Segment Length Information:

Segment	Length	Segment	Length	Segment	Length	Segment	Length
0500	0626						
0750	1104						

Primary Route Interchange Exit Number: 10

Secondary Route Interchange Exit Number

PennDOT Type 10 Map View:



Last Date Modified: Mar 20, 2023

County: 41

RMS Interchange Information

Bureau of Maintenance & Operations
Asset Management Division

Print Form



Interchange Number: 8026

Interchange Name: THOMAS ST INT

Intersecting SR's: US 220, PA 44 & SR 3027 Thomas St

Ramp Segment Number and Ramp Segment Length Information:

Segment	Length	Segment	Length	Segment	Length	Segment	Length
0010	0942						
0250	0815						
0500	0603						
0750	0549						

Primary Route Interchange Exit Number

Secondary Route Interchange Exit Number

PennDOT Type 10 Map View:



Last Date Modified: Mar 21, 2023

County: 41

RMS Interchange Information

Print Form

Interchange Number: 8028

Bureau of Maintenance & Operations
Asset Management Division



Interchange Name: MAIN STREET INT

Intersecting SR's: US 220 & PA 44 Main St

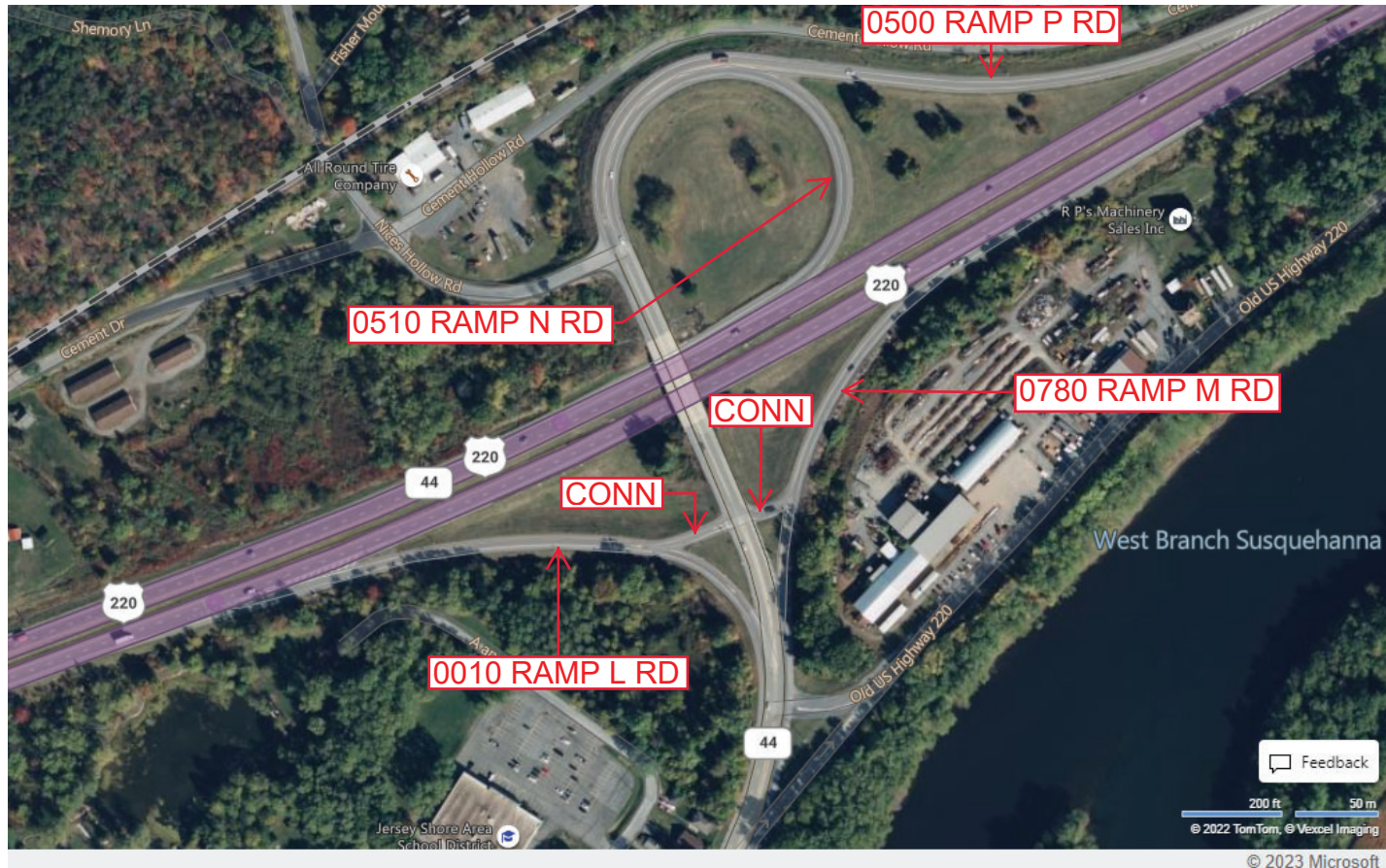
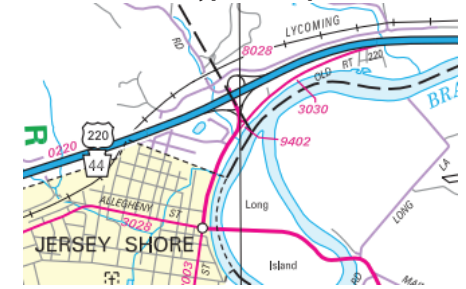
Ramp Segment Number and Ramp Segment Length Information:

Segment	Length	Segment	Length	Segment	Length	Segment	Length
0010	0764						
0500	1750						
0510	1276						
0780	0623						

Primary Route
Interchange Exit
Number

Secondary Route
Interchange Exit
Number

PennDOT Type 10 Map View:



Feedback

200 ft 50 m
© 2022 TomTom © Vexcel Imaging

© 2023 Microsoft

Last Date Modified: Jan 17, 2025

County: **41**

RMS Interchange Information

Print Form

Interchange Number: **8030**

Bureau of Maintenance & Operations
Asset Management Division



Interchange Name: **FOURTH ST INT**

Intersecting SR's: **US 220, SR 2014 Fourth St & T403 Woodward St**

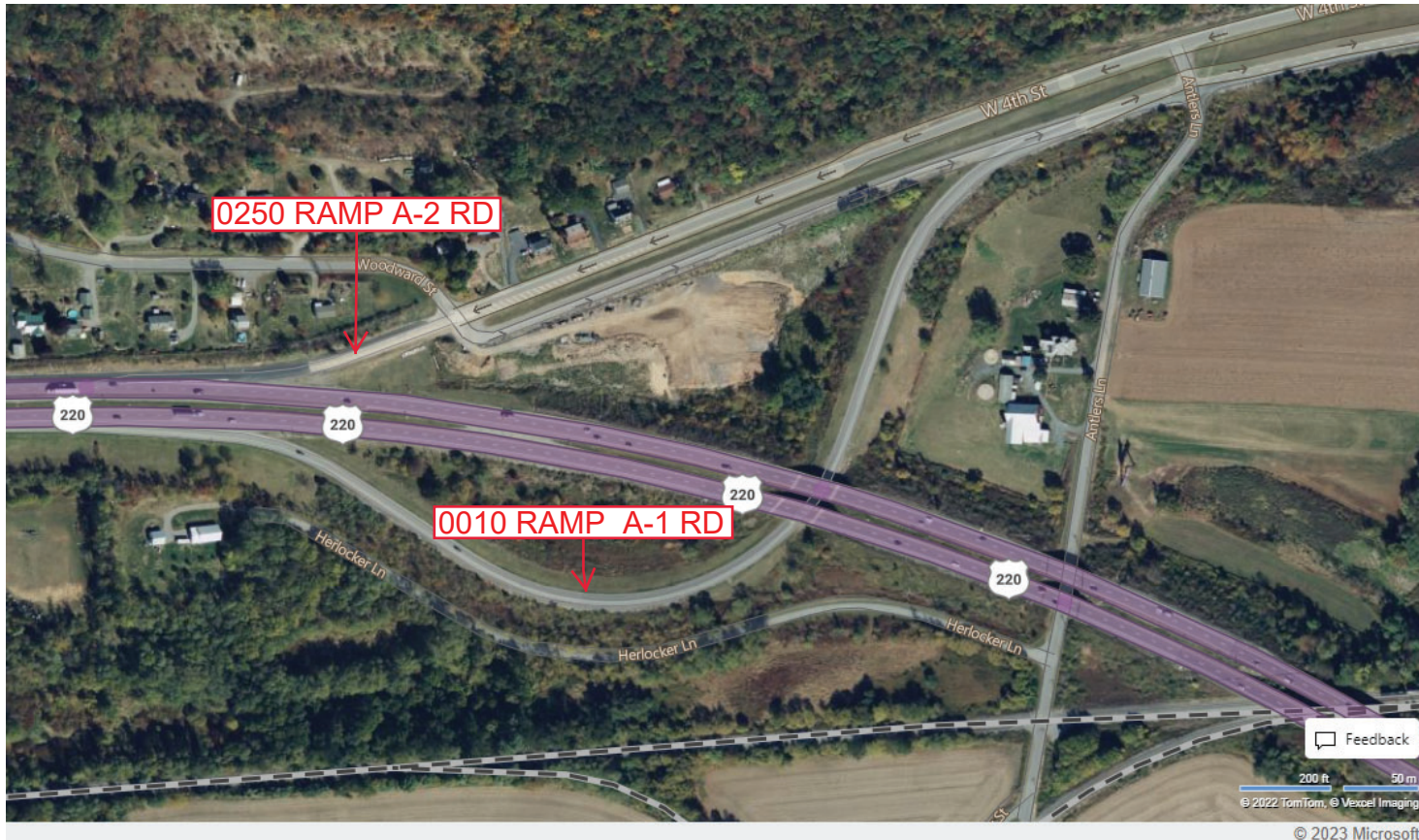
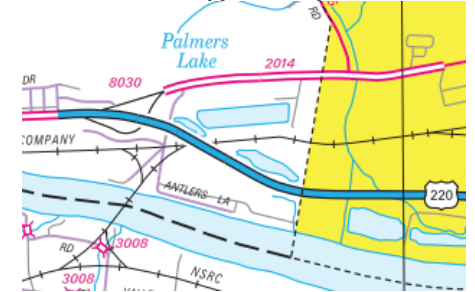
Ramp Segment Number and Ramp Segment Length Information:

Segment	Length	Segment	Length	Segment	Length	Segment	Length
0010	2285						
0250	0478						

Primary Route Interchange Exit Number

Secondary Route Interchange Exit Number

PennDOT Type 10 Map View:



Feedback

200 ft 50 m
© 2022 TomTom, © Vexcel Imaging

© 2023 Microsoft

Last Date Modified:

Mar 21, 2023

County: 41

RMS Interchange Information

Print Form

Interchange Number: 8032

Bureau of Maintenance & Operations
Asset Management Division



Interchange Name: REACH RD INT

Intersecting SR's: US 220 & Reach Rd

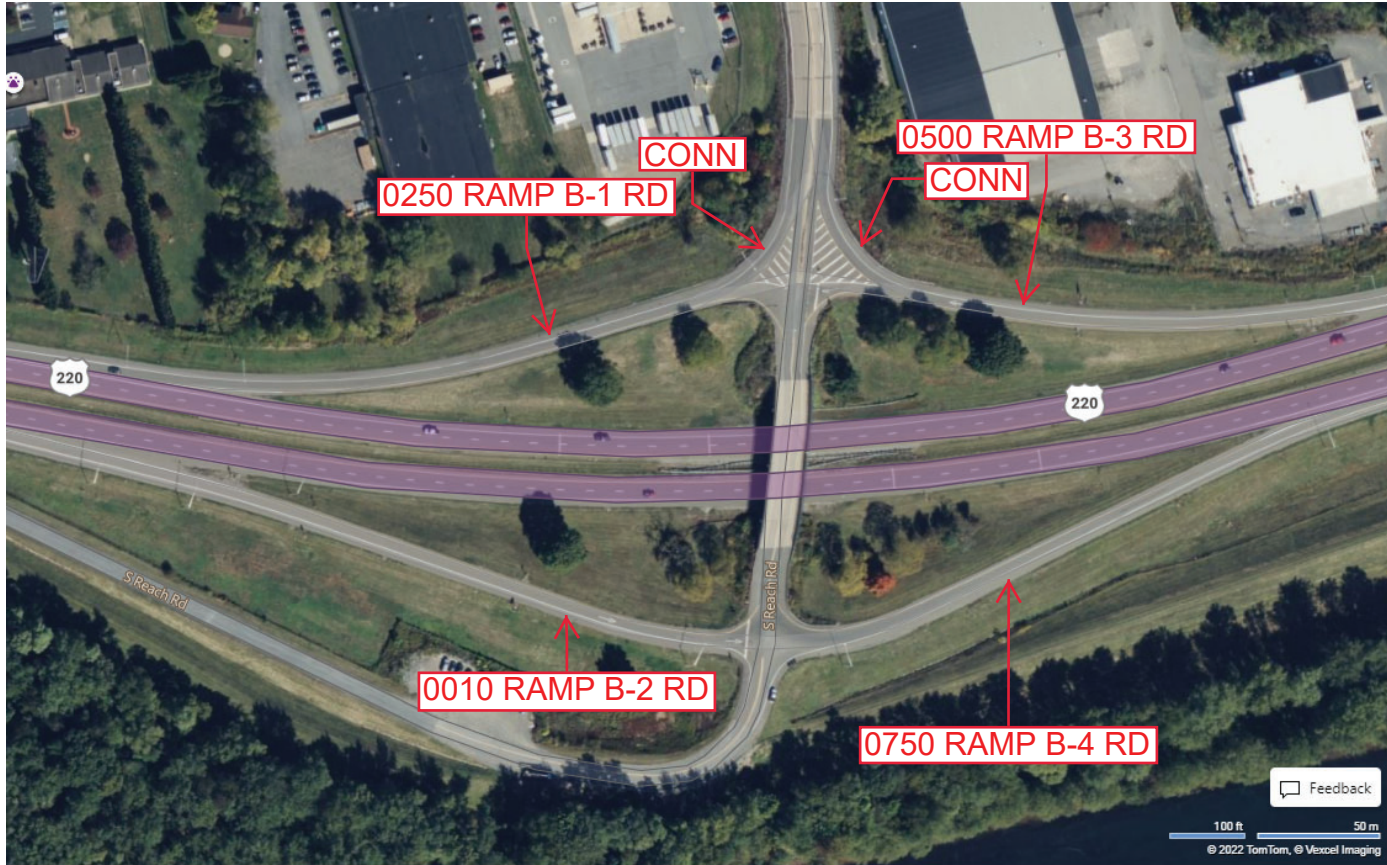
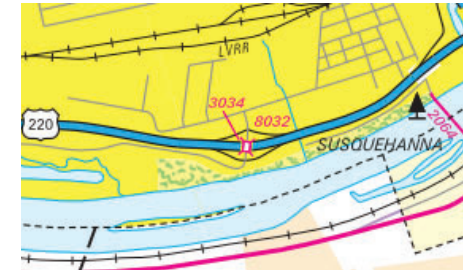
Ramp Segment Number and Ramp Segment Length Information:

Segment	Length	Segment	Length	Segment	Length	Segment	Length
0010	0793						
0250	0734						
0500	0732						
0750	0740						

Primary Route Interchange Exit Number

Secondary Route Interchange Exit Number

PennDOT Type 10 Map View:



© 2023 Microsoft

Last Date Modified: Mar 22, 2023

County: 41

RMS Interchange Information

Print Form

Interchange Number: 8034

Bureau of Maintenance & Operations
Asset Management Division



Interchange Name: I-180 INT

Intersecting SR's: I-180 & SR 2014 Board St

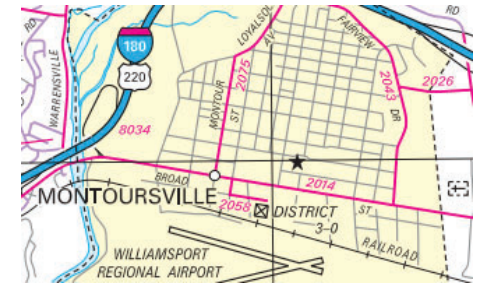
Ramp Segment Number and Ramp Segment Length Information:

Segment	Length	Segment	Length	Segment	Length	Segment	Length
0010	2673						

Primary Route Interchange Exit Number

Secondary Route Interchange Exit Number

PennDOT Type 10 Map View:



Last Date Modified: Mar 22, 2023

County: **41**

RMS Interchange Information

Print Form

Interchange Number: **9102**

Bureau of Maintenance & Operations
Asset Management Division



Interchange Name: **LYCOMING MALL DR**

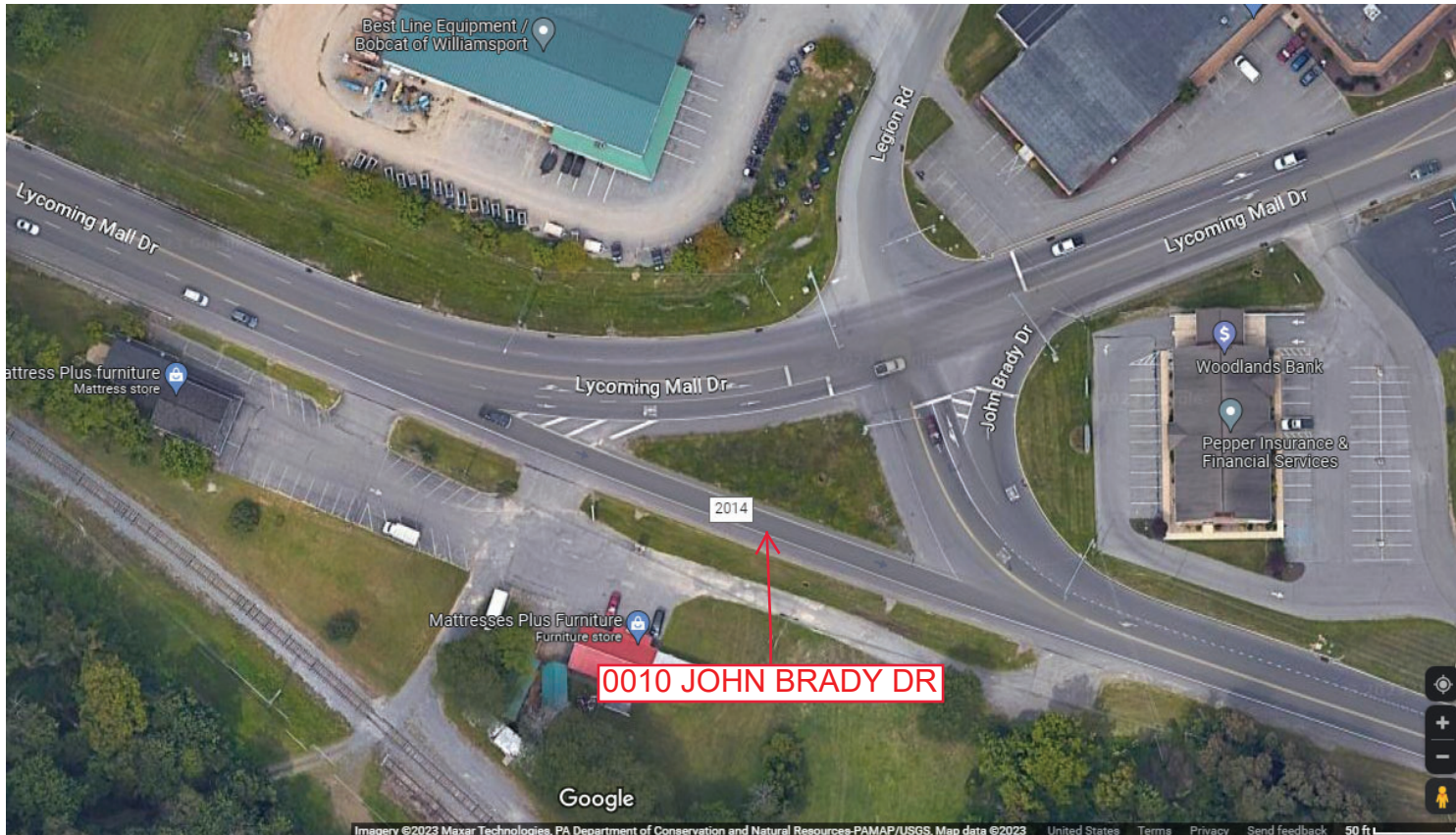
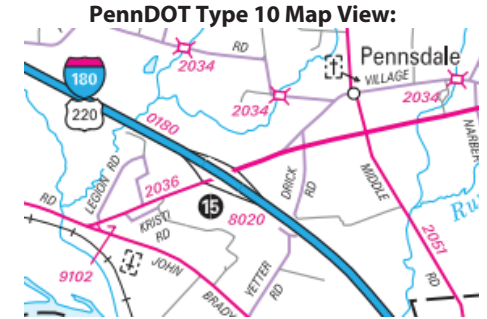
Intersecting SR's: **SR 2014 Lycoming Mall & John Brady Dr**

Ramp Segment Number and Ramp Segment Length Information:

Segment	Length	Segment	Length	Segment	Length	Segment	Length
0010	0195						

Primary Route Interchange Exit Number

Secondary Route Interchange Exit Number



Last Date Modified: **Mar 22, 2023**

County: 41

RMS Interchange Information

Print Form

Bureau of Maintenance & Operations
Asset Management Division



Interchange Number: 9401

Interchange Name: LYCOMING CREEK RD JUGHANDLE

Intersecting SR's: SR 1017 Lycoming Creek Rd & SR 3014 Mill Ln

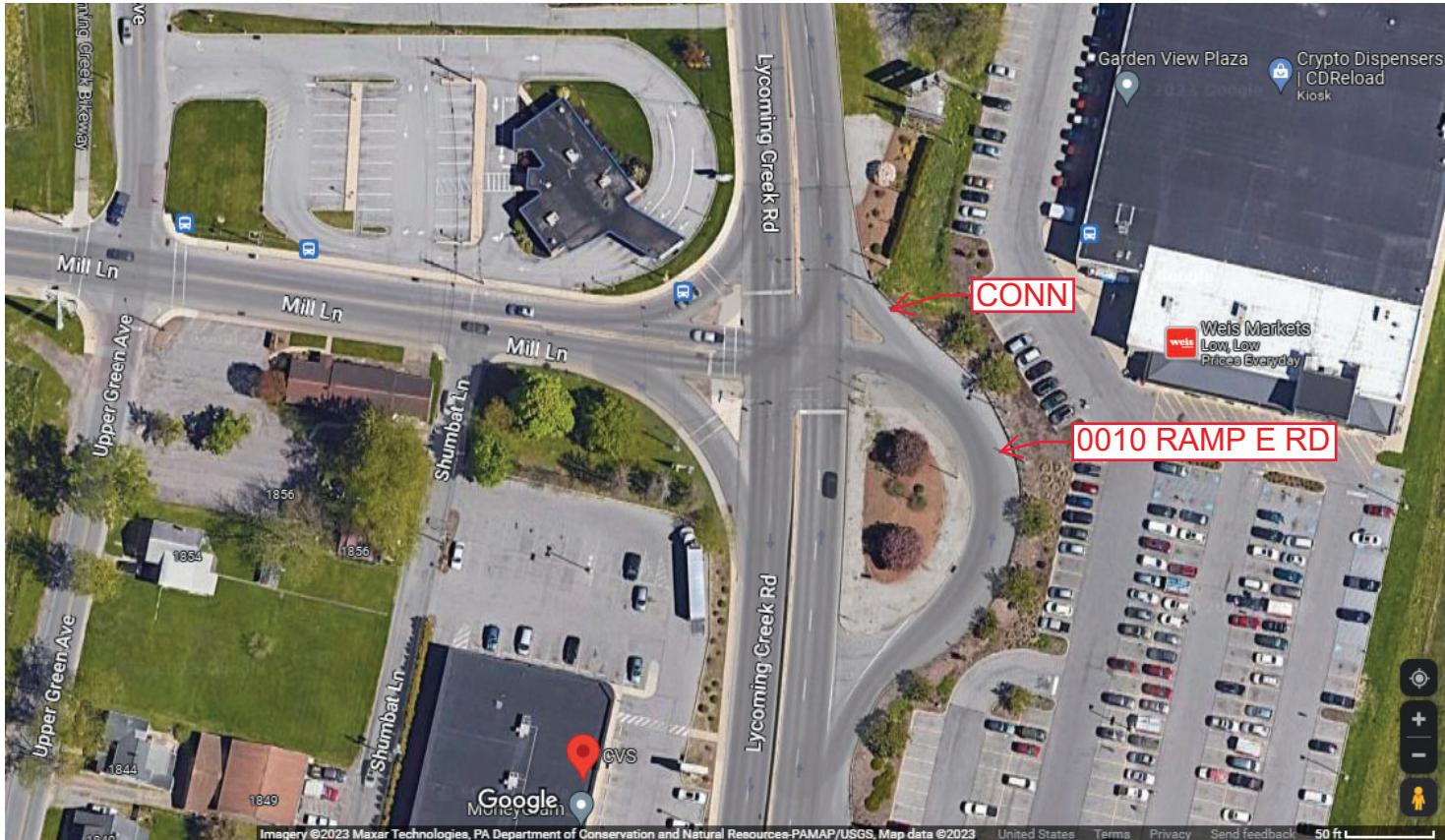
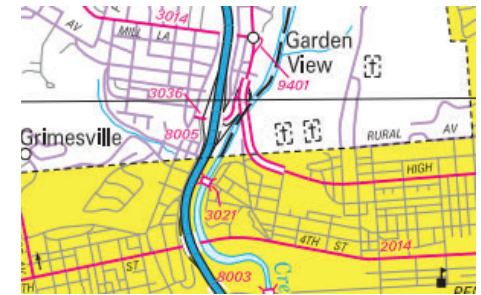
Ramp Segment Number and Ramp Segment Length Information:

Segment	Length	Segment	Length	Segment	Length	Segment	Length
0010	0232						

Primary Route Interchange Exit Number

Secondary Route Interchange Exit Number

PennDOT Type 10 Map View:



Last Date Modified: Mar 22, 2023

County: 41

RMS Interchange Information

Print Form

Interchange Number: 9402

Bureau of Maintenance & Operations
Asset Management Division



Interchange Name: MAIN ST WYE

Intersecting SR's: PA 44 Main St & SR 3030 Old Rt 220

Ramp Segment Number and Ramp Segment Length Information:

Segment	Length	Segment	Length	Segment	Length	Segment	Length
0010	0245						

Primary Route Interchange Exit Number

Secondary Route Interchange Exit Number

PennDOT Type 10 Map View:



Last Date Modified: Mar 22, 2023

County: 41

RMS Interchange Information

Print Form

Interchange Number: 9404

Bureau of Maintenance & Operations
Asset Management Division



Interchange Name: YOUNGS WEST JUGHANDLE RD

Intersecting SR's: US 220 & T354 Youngs Rd

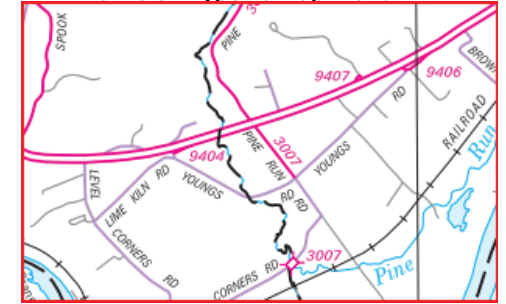
Ramp Segment Number and Ramp Segment Length Information:

Segment	Length	Segment	Length	Segment	Length	Segment	Length
0010	0439						

Primary Route
Interchange Exit
Number

Secondary Route
Interchange Exit
Number

PennDOT Type 10 Map View:



Last Date Modified:

Jan 21, 2025

County: 41

RMS Interchange Information

Bureau of Maintenance & Operations
Asset Management Division

Print Form



Interchange Number: 9405

Interchange Name: RADIO CLUB JUGHANDLE RD

Intersecting SR's: PA 87 & T545 Radio Club Rd

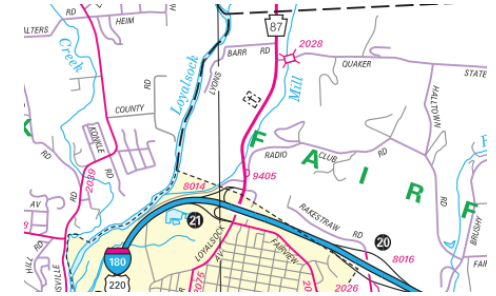
Ramp Segment Number and Ramp Segment Length Information:

Segment	Length	Segment	Length	Segment	Length	Segment	Length
0010	0249						

Primary Route Interchange Exit Number

Secondary Route Interchange Exit Number

PennDOT Type 10 Map View:



Last Date Modified:

Mar 22, 2023

County: 41

RMS Interchange Information

Print Form

Interchange Number: 9406

Bureau of Maintenance & Operations
Asset Management Division



Interchange Name: YOUNGS EAST JUGHANDLE RD

Intersecting SR's: US 220 & T343 Youngs Rd

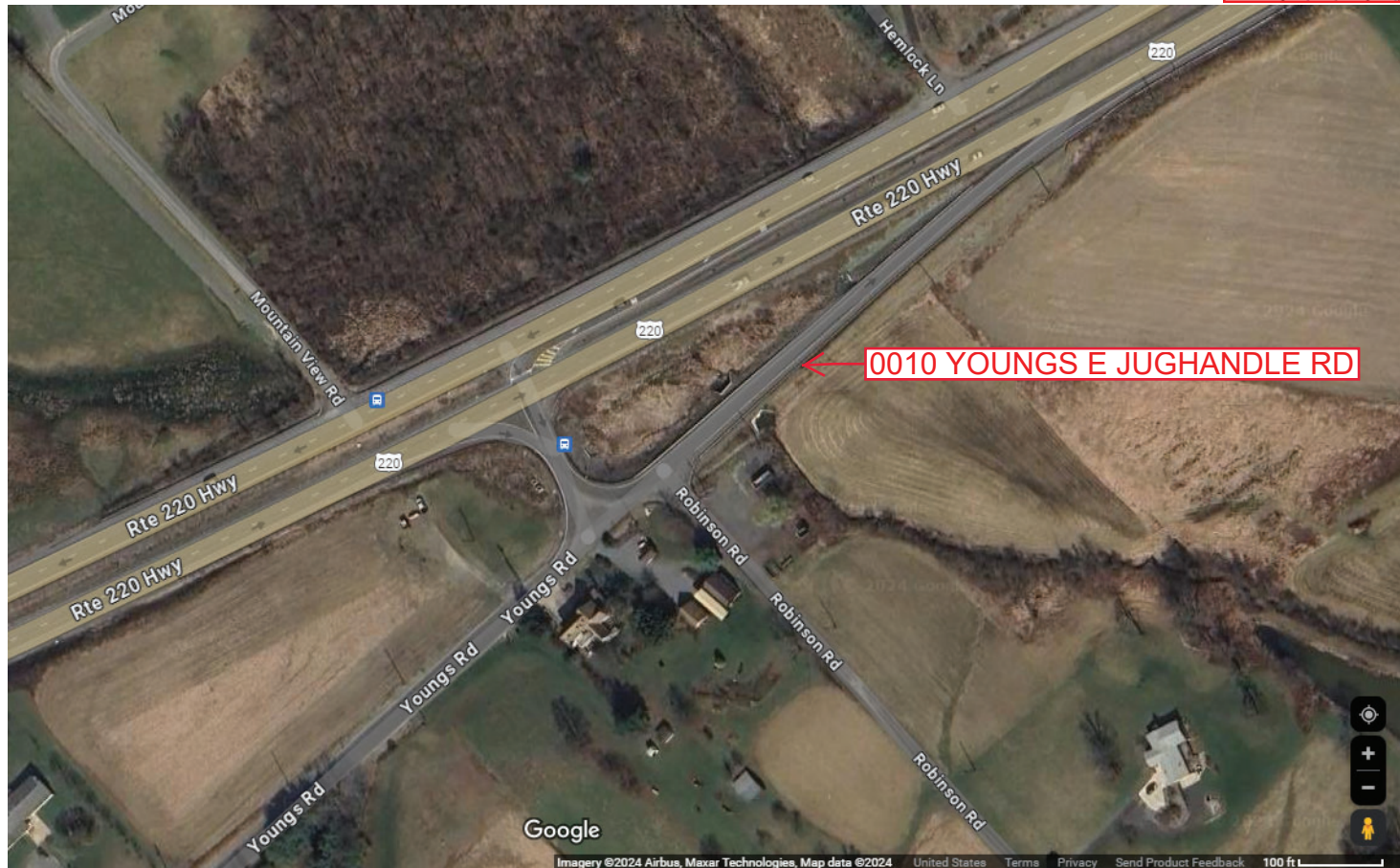
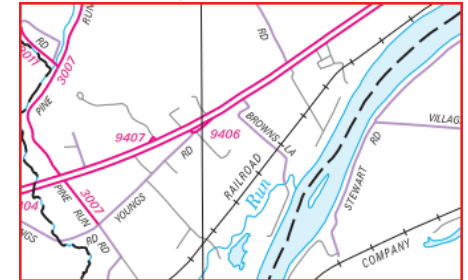
Ramp Segment Number and Ramp Segment Length Information:

Segment	Length	Segment	Length	Segment	Length	Segment	Length
0010	0825						

Primary Route
Interchange Exit
Number

Secondary Route
Interchange Exit
Number

PennDOT Type 10 Map View:



Last Date Modified:

Jan 21, 2025

County: 41

RMS Interchange Information

Bureau of Maintenance & Operations
Asset Management Division

Print Form



Interchange Number: 9407

Interchange Name: HARVEST JUGHANDLE RD

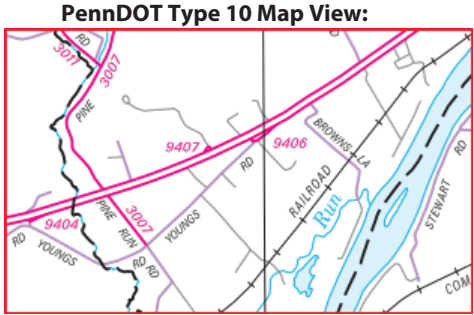
Intersecting SR's: US 220 SH

Ramp Segment Number and Ramp Segment Length Information:

Segment	Length	Segment	Length	Segment	Length	Segment	Length
0010	0302						

Primary Route Interchange Exit Number

Secondary Route Interchange Exit Number



Last Date Modified: Jan 21, 2025

County: 41

RMS Interchange Information

Print Form

Interchange Number: 9408

Bureau of Maintenance & Operations
Asset Management Division



Interchange Name: LOON JUGHANDLE RD

Intersecting SR's: US 220 SH

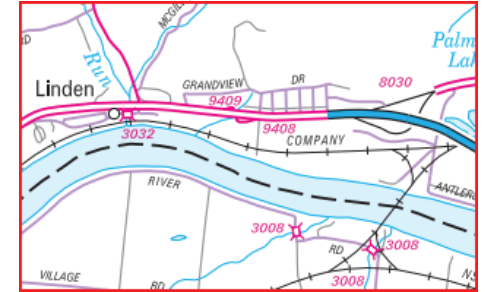
Ramp Segment Number and Ramp Segment Length Information:

Segment	Length	Segment	Length	Segment	Length	Segment	Length
0010	0580						

Primary Route Interchange Exit Number

Secondary Route Interchange Exit Number

PennDOT Type 10 Map View:



Privacy Choices Consumer Health Privacy

© 2024 TomTom, © OpenStreetMap, © Vexcel Imaging

© 2025 Microsoft

Last Date Modified: Jan 15, 2025

County: 41

RMS Interchange Information

Print Form

Bureau of Maintenance & Operations
Asset Management Division



Interchange Number: 9409

Interchange Name: GRANDVIEW JUGHANDLE RD

Intersecting SR's: SR 220 SH & TWP First St

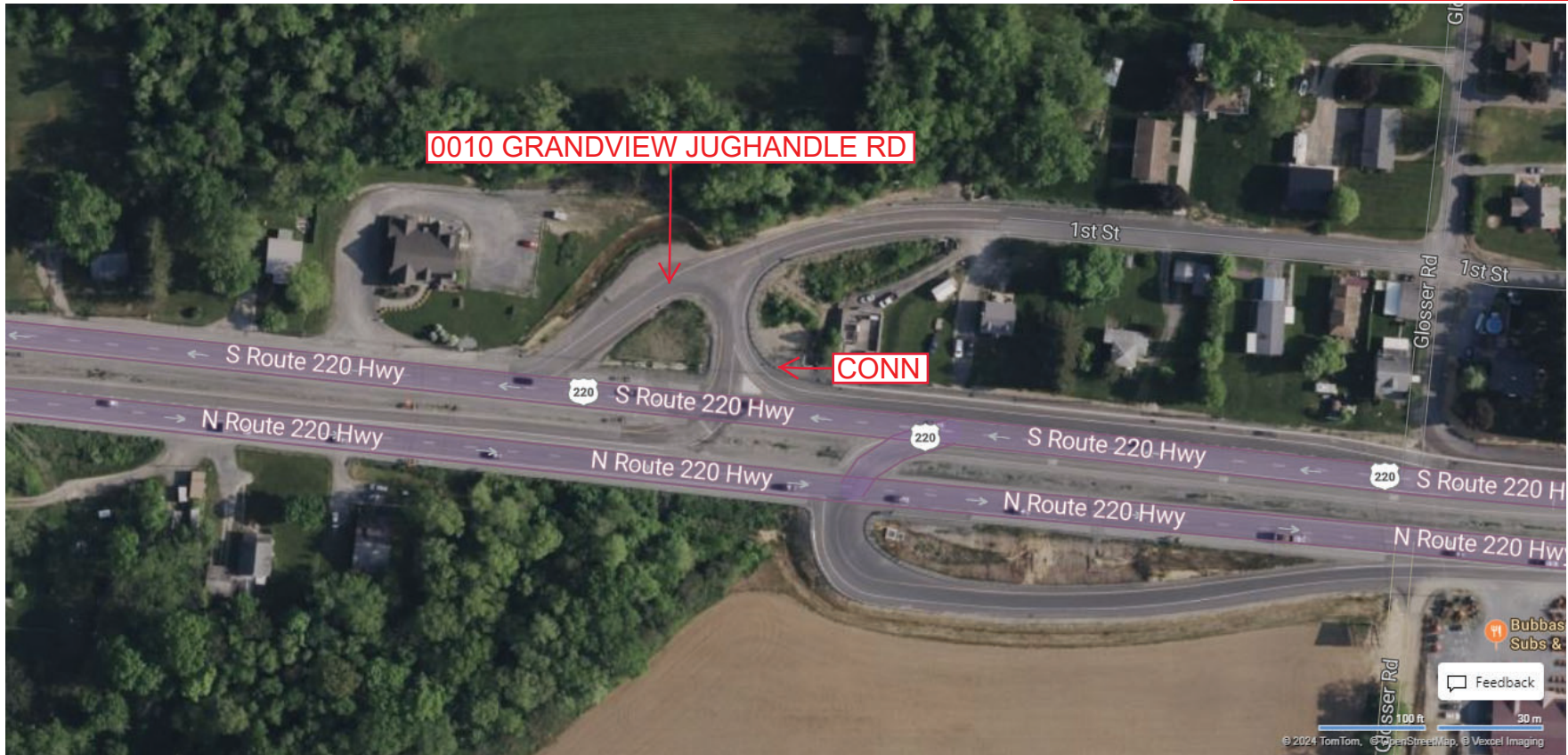
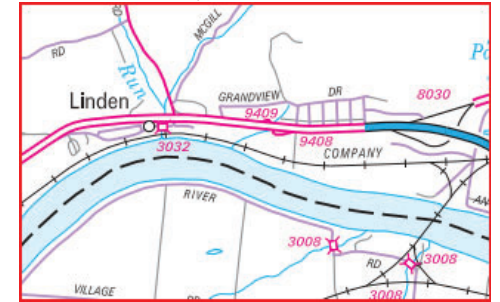
Ramp Segment Number and Ramp Segment Length Information:

Segment	Length	Segment	Length	Segment	Length	Segment	Length
0010	0254						

Primary Route Interchange Exit Number

Secondary Route Interchange Exit Number

PennDOT Type 10 Map View:



Last Date Modified:

Apr 23, 2024

County: 41

RMS Interchange Information

Print Form

Interchange Number: 9413

Bureau of Maintenance & Operations
Asset Management Division



Interchange Name: DOLLY M WILT MEMORIAL HW

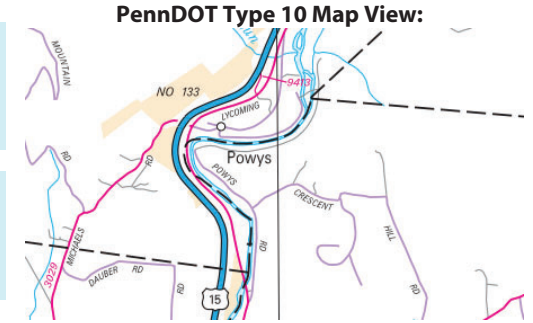
Intersecting SR's: US 15 & SR 1017 Lycoming Creek Rd

Ramp Segment Number and Ramp Segment Length Information:

Segment	Length	Segment	Length	Segment	Length	Segment	Length
0010	0345						

Primary Route
Interchange Exit
Number

Secondary Route
Interchange Exit
Number



Last Date Modified:

Mar 23, 2023

County: 41

RMS Interchange Information

Print Form

Interchange Number: 9415

Bureau of Maintenance & Operations
Asset Management Division



Interchange Name: DOLLY M WILT MEMORIAL HW

Intersecting SR's: US 15, PA 14 & TWP Hemlock Dr

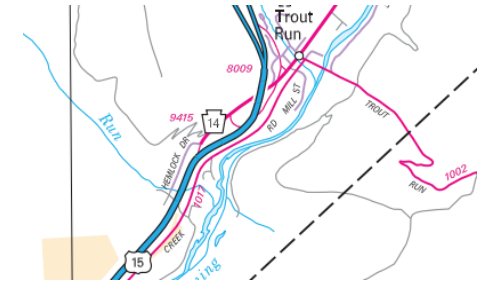
Ramp Segment Number and Ramp Segment Length Information:

Segment	Length	Segment	Length	Segment	Length	Segment	Length
0010	0209						

Primary Route
Interchange Exit
Number

Secondary Route
Interchange Exit
Number

PennDOT Type 10 Map View:



0010 RAMP A RD

Last Date Modified:

Mar 23, 2023

County: 41

RMS Interchange Information

Print Form

Interchange Number: 9417

Bureau of Maintenance & Operations
Asset Management Division



Interchange Name: E SECOND AV

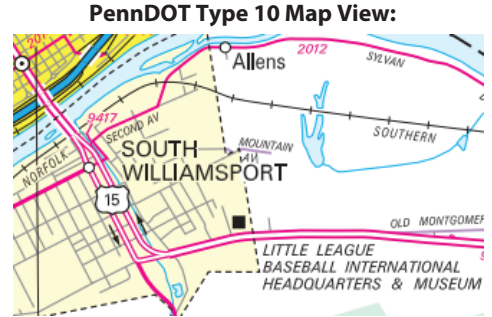
Intersecting SR's: US 15 Hasting St & SR 2012 main St/E Second Av

Ramp Segment Number and Ramp Segment Length Information:

Segment	Length	Segment	Length	Segment	Length	Segment	Length
0010	0236						

Primary Route Interchange Exit Number

Secondary Route Interchange Exit Number



Last Date Modified: Mar 23, 2023

County: 41

RMS Interchange Information

Print Form

Interchange Number: 9419

Bureau of Maintenance & Operations
Asset Management Division



Interchange Name: US 15 JUGHANDLE RD

Intersecting SR's: US 15 Montgomery Pk & PRDR Sommers Dr &

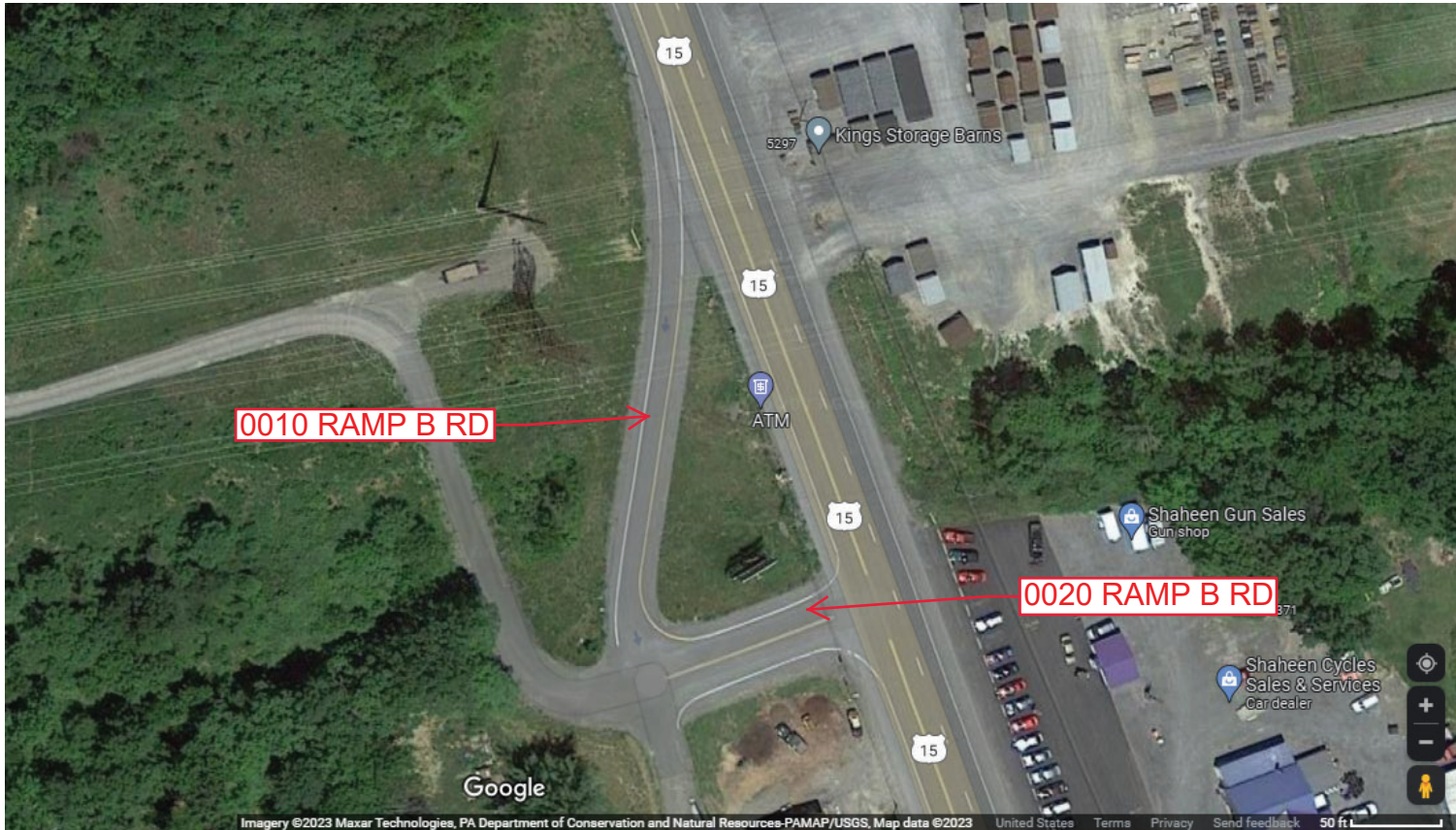
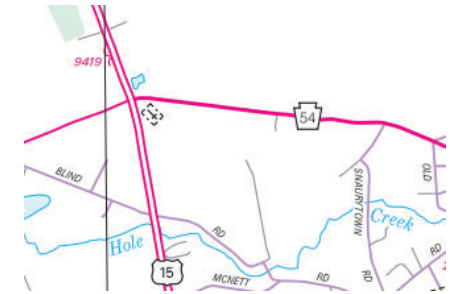
Ramp Segment Number and Ramp Segment Length Information:

Segment	Length	Segment	Length	Segment	Length	Segment	Length
0010	0368						
0020	0131						

Primary Route Interchange Exit Number

Secondary Route Interchange Exit Number

PennDOT Type 10 Map View:



Last Date Modified: Mar 24, 2023

County: 41

RMS Interchange Information

Print Form

Interchange Number: 9421

Bureau of Maintenance & Operations
Asset Management Division



Interchange Name: US 15 JUGHANDLE RD

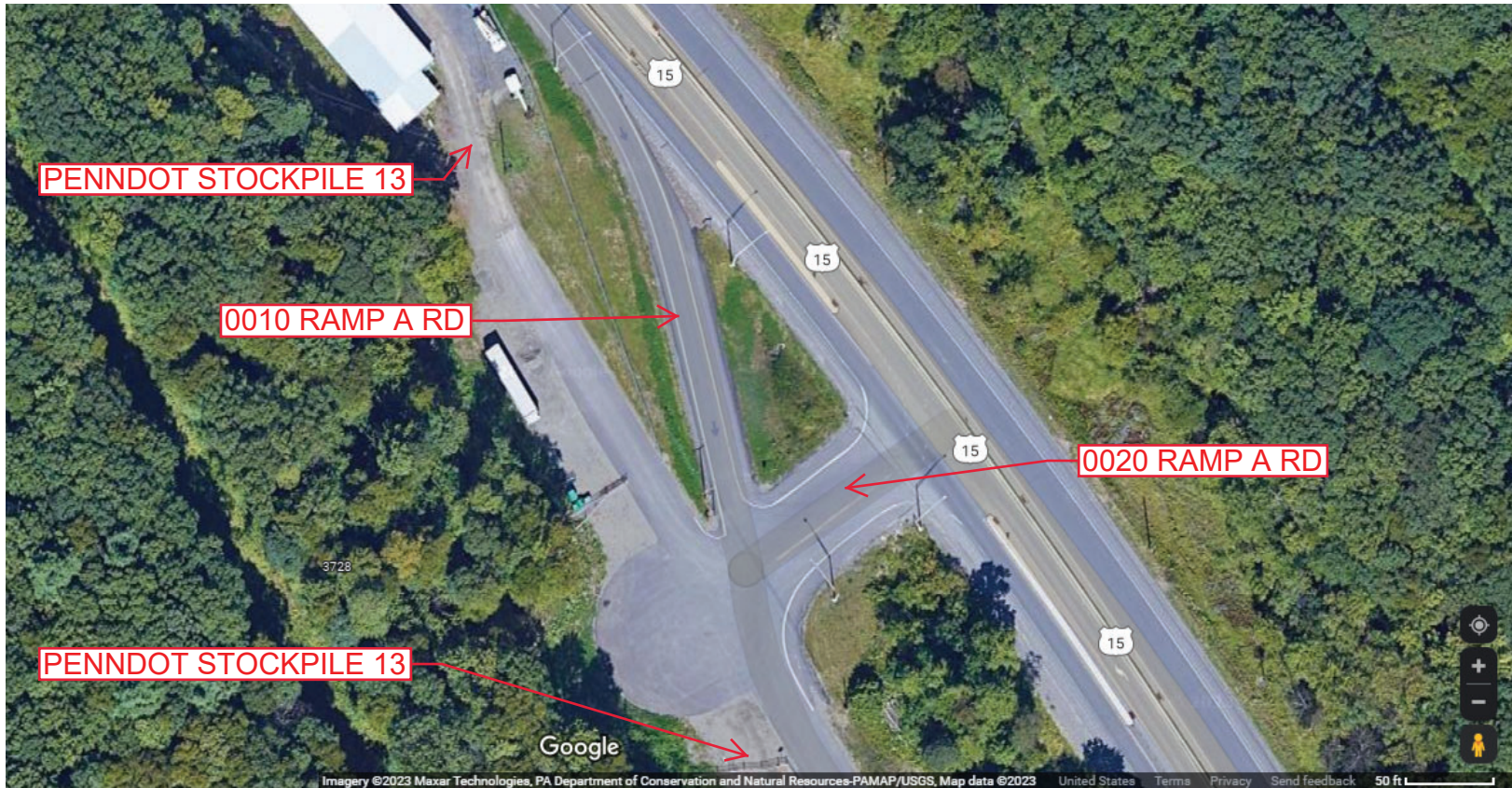
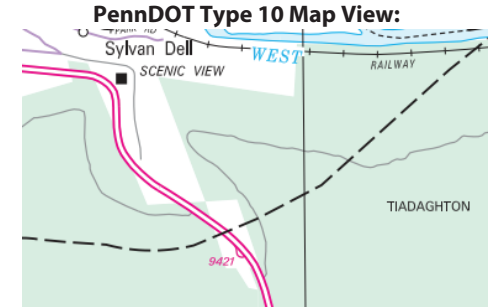
Intersecting SR's: US 15 Montgomery Pk

Ramp Segment Number and Ramp Segment Length Information:

Segment	Length	Segment	Length	Segment	Length	Segment	Length
0010	0402						
0020	0122						

Primary Route
Interchange Exit
Number

Secondary Route
Interchange Exit
Number



Last Date Modified:

Mar 24, 2023

County: 41

RMS Interchange Information

Print Form

Interchange Number: 9423

Bureau of Maintenance & Operations
Asset Management Division



Interchange Name: US 15 JUGHANDLE RD

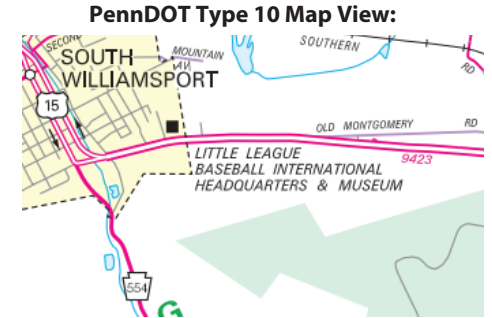
Intersecting SR's: US 15 Montgomery Pk

Ramp Segment Number and Ramp Segment Length Information:

Segment	Length	Segment	Length	Segment	Length	Segment	Length
0010	0380						

Primary Route Interchange Exit Number

Secondary Route Interchange Exit Number



Feedback
50 ft 20 m
© 2023 TomTom, © Vexcel Imaging
© 2023 Microsoft

Last Date Modified: Mar 24, 2023