

County: 49

RMS Interchange Information

Print Form

Interchange Number: 8001

Bureau of Maintenance & Operations
Asset Management Division



Interchange Name: HICKORY RD INT

Intersecting SR's: PA 61, PA 901 & SR 2026 Hickory Rd

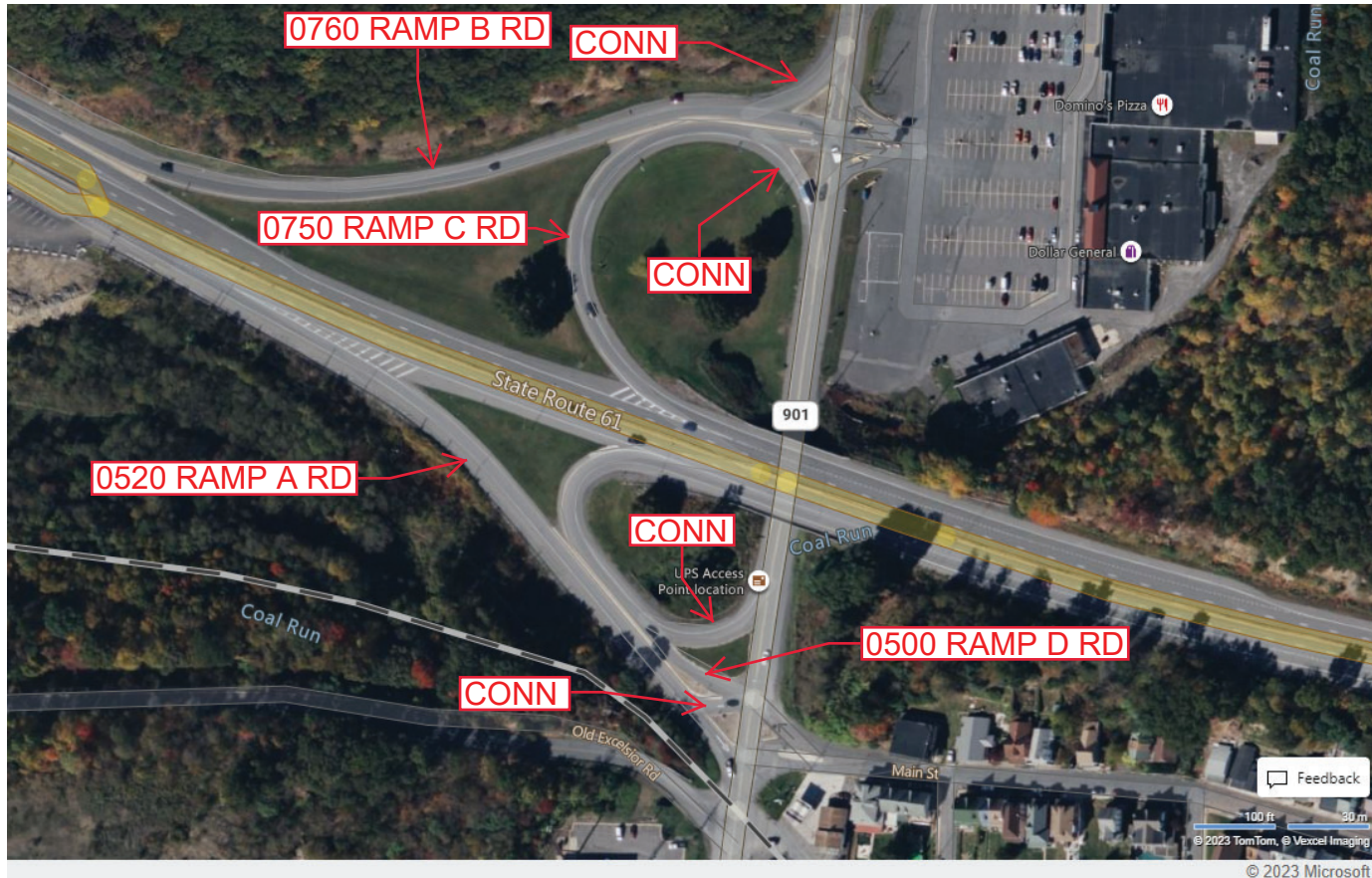
Ramp Segment Number and Ramp Segment Length Information:

Segment	Length	Segment	Length	Segment	Length	Segment	Length
0500	0423						
0520	0616						
0750	0572						
0760	1000						

Primary Route Interchange Exit Number

Secondary Route Interchange Exit Number

PennDOT Type 10 Map View:



Feedback
100 ft 30 m
© 2023 TomTom, © Vexcel Imaging
© 2023 Microsoft

Last Date Modified: Mar 31, 2023

County: 49

RMS Interchange Information

Print Form

Interchange Number: 8002

Bureau of Maintenance & Operations
Asset Management Division



Interchange Name: MILTON INT

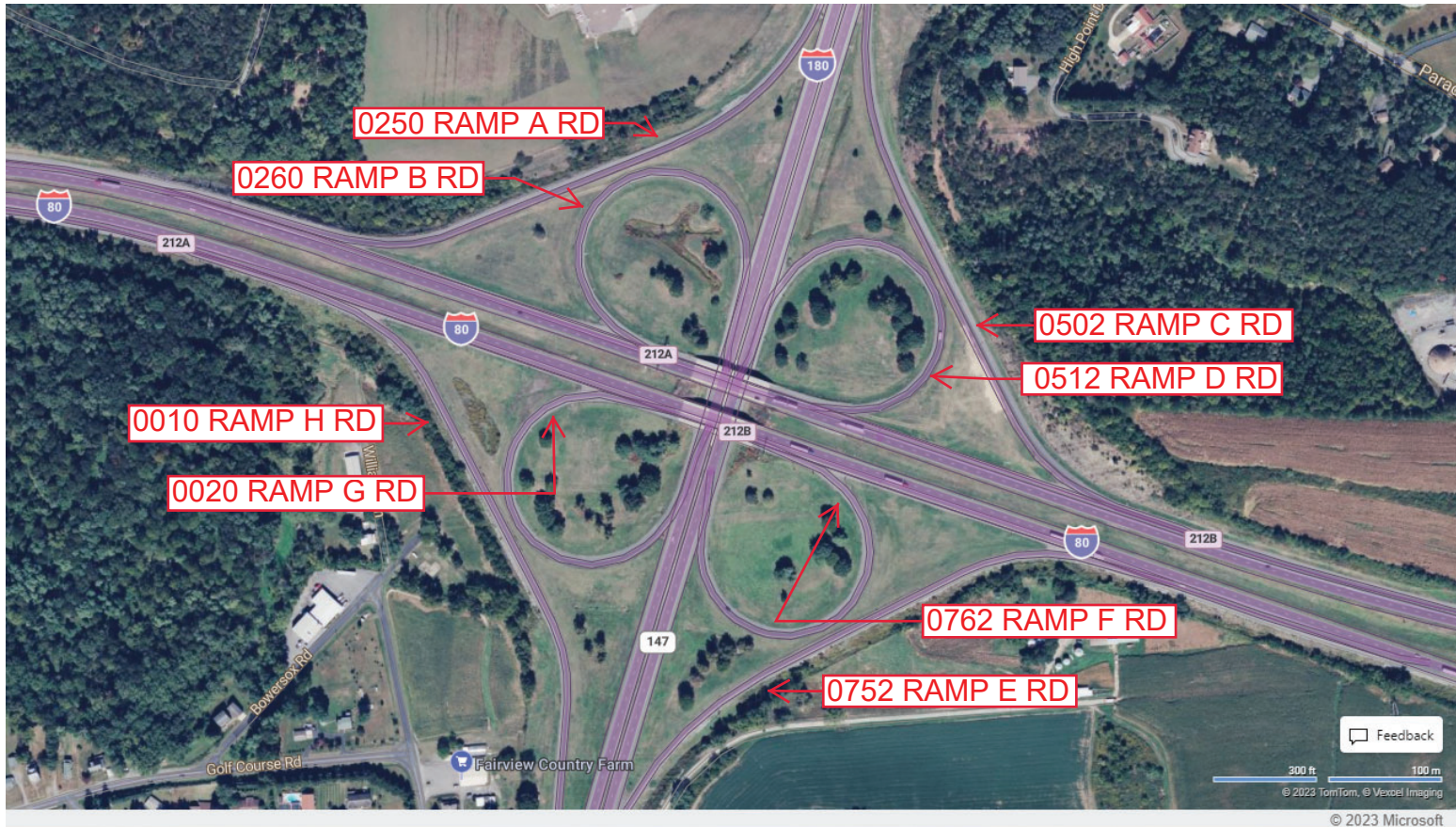
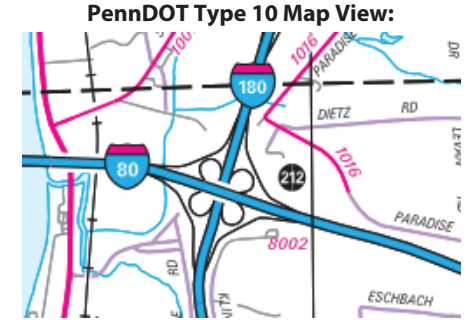
Intersecting SR's: I-80 Z H Confair Memorial Hw, I-180 & PA 147

Ramp Segment Number and Ramp Segment Length Information:

Segment	Length	Segment	Length	Segment	Length	Segment	Length
0010	1893	0512	1041				
0020	1010	0752	1461				
0250	1588	0762	0992				
0260	1027						
0502	1533						

Primary Route Interchange Exit Number: 212A

Secondary Route Interchange Exit Number: 212B



Last Date Modified: Jan 7, 2025

County: 49

RMS Interchange Information

Bureau of Maintenance & Operations
Asset Management Division

Print Form



Interchange Number: 8003

Interchange Name: INDUSTRIAL PARK RD INT

Intersecting SR's: PA 147 & SR 1022 Industrial Park Rd

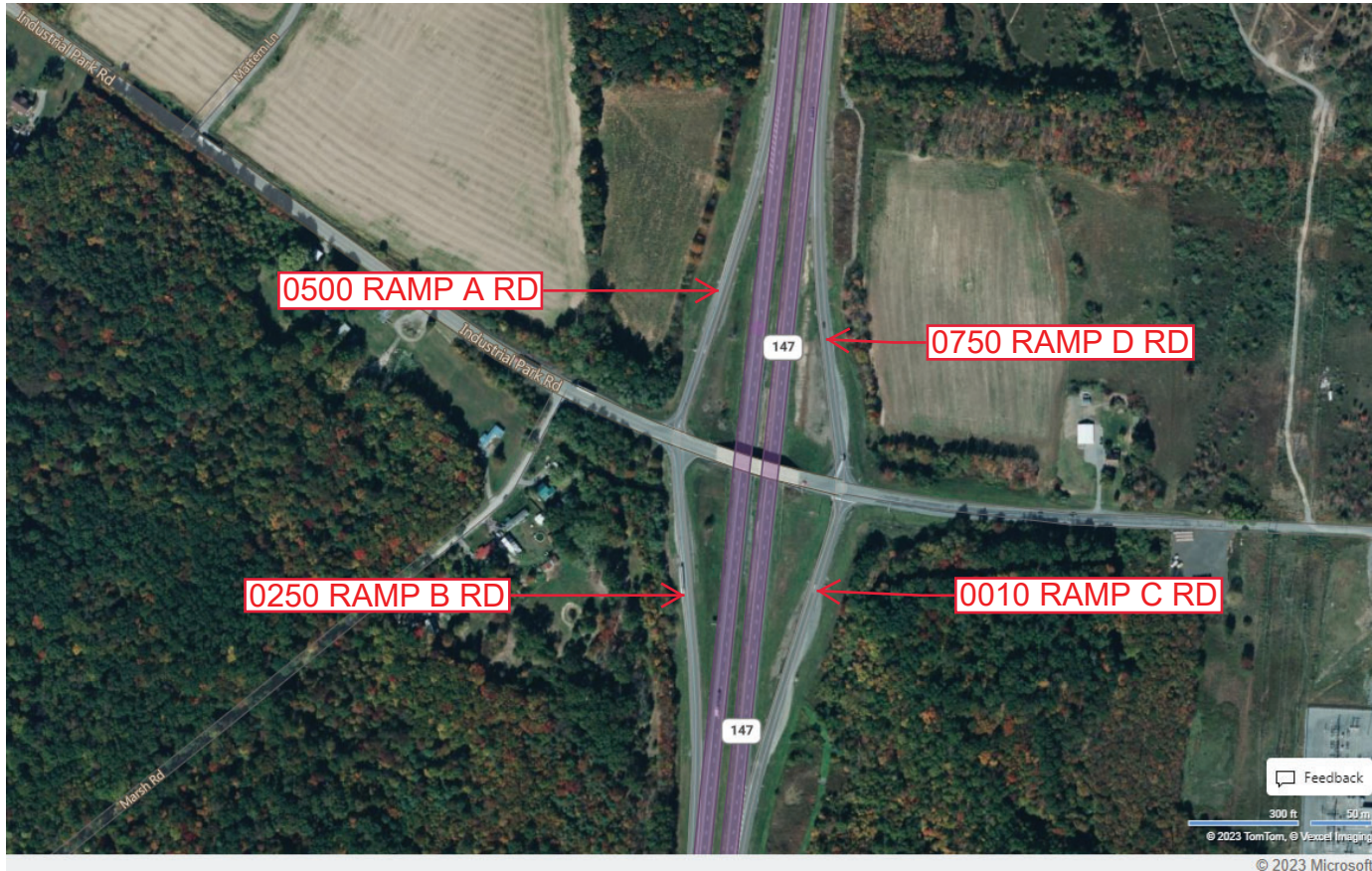
Ramp Segment Number and Ramp Segment Length Information:

Segment	Length	Segment	Length	Segment	Length	Segment	Length
0010	0825						
0250	0860						
0500	0750						
0750	0777						

Primary Route Interchange Exit Number

Secondary Route Interchange Exit Number

PennDOT Type 10 Map View:



Last Date Modified:

Mar 31, 2023

County: **49**

RMS Interchange Information

Print Form

Interchange Number: **8004**

Bureau of Maintenance & Operations
Asset Management Division



Interchange Name: **LIMESTONEVILLE INT**

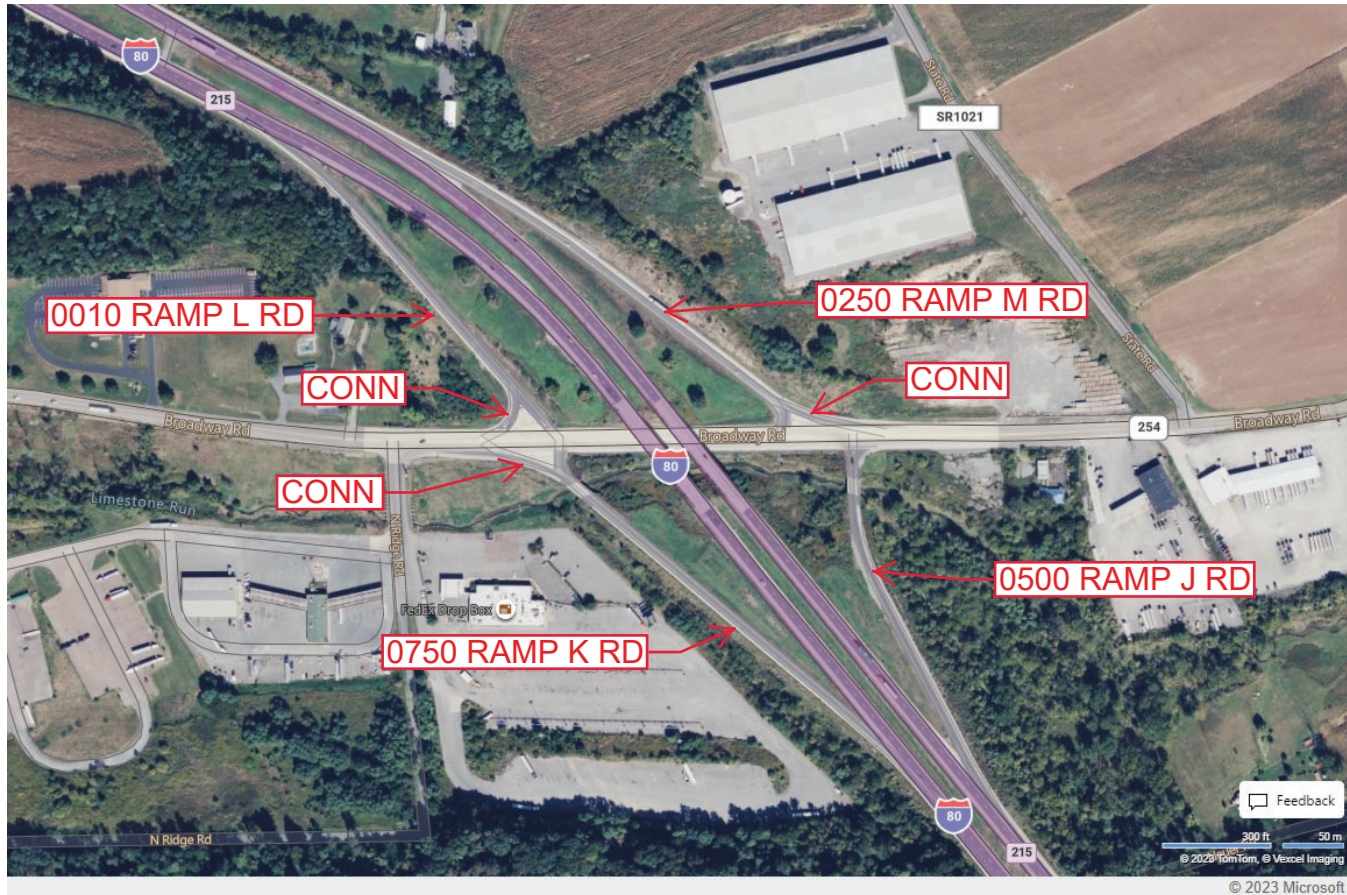
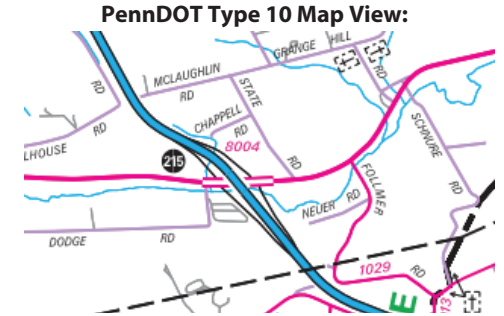
Intersecting SR's: **I-80 Z H Confair Memorial Hw & PA 254**

Ramp Segment Number and Ramp Segment Length Information:

Segment	Length	Segment	Length	Segment	Length	Segment	Length
0010	0994						
0250	1137						
0500	0901						
0750	1243						

Primary Route Interchange Exit Number: **215**

Secondary Route Interchange Exit Number



Last Date Modified:

Apr 3, 2023

County: 49

RMS Interchange Information

Print Form

Interchange Number: 8005

Bureau of Maintenance & Operations
Asset Management Division



Interchange Name: MAHONING ST INT

Intersecting SR's: PA 147 & PA 642 Mahoning St

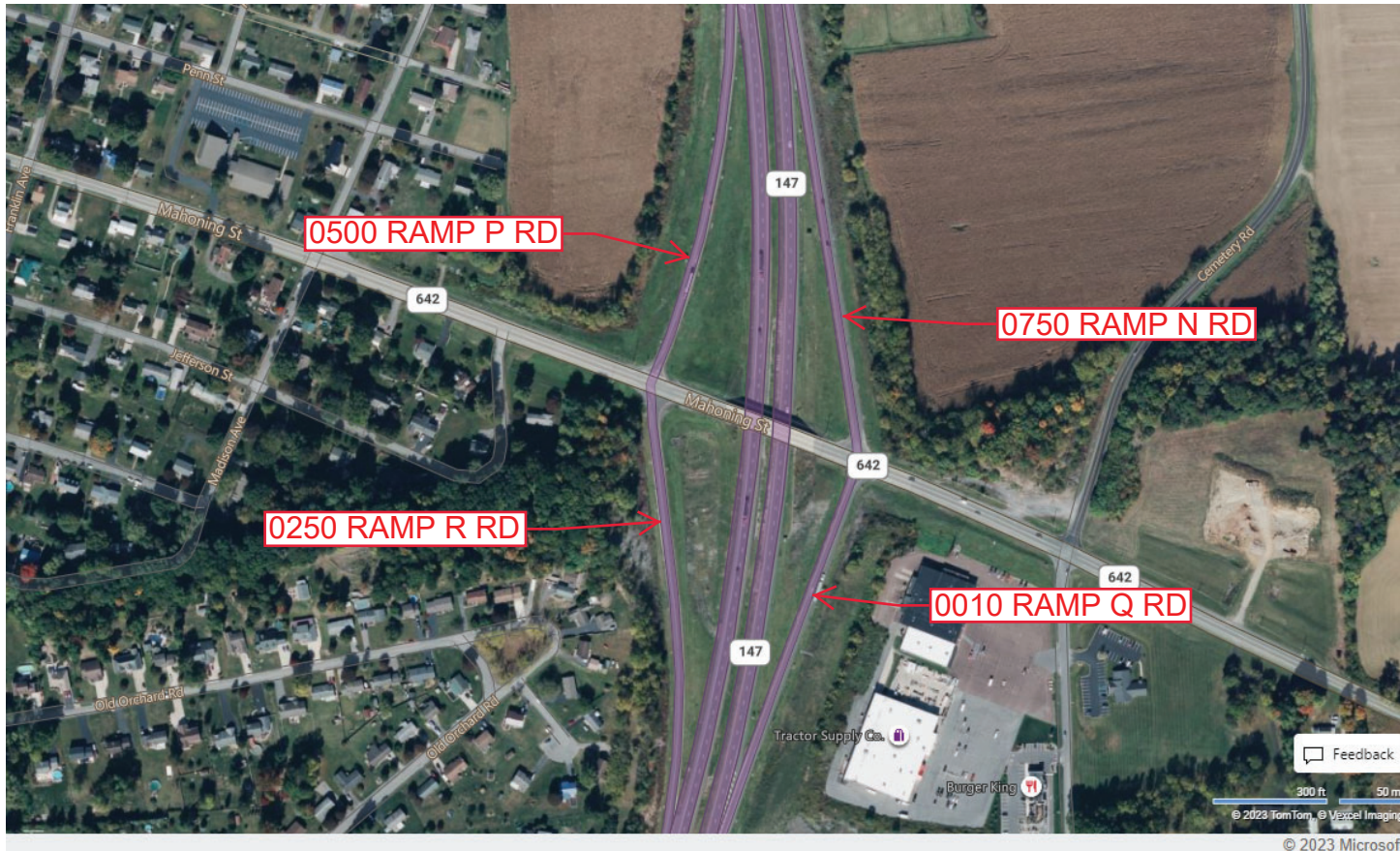
Ramp Segment Number and Ramp Segment Length Information:

Segment	Length	Segment	Length	Segment	Length	Segment	Length
0010	0865						
0250	1127						
0500	1000						
0750	1040						

Primary Route
Interchange Exit
Number

Secondary Route
Interchange Exit
Number

PennDOT Type 10 Map View:



Last Date Modified:

Apr 3, 2023

County: 49

RMS Interchange Information

Print Form

Interchange Number: 8006

Bureau of Maintenance & Operations
Asset Management Division



Interchange Name: TURBOTVILLE INT

Intersecting SR's: I-180 & PA 54

Ramp Segment Number and Ramp Segment Length Information:

Segment	Length	Segment	Length	Segment	Length	Segment	Length
0010	0840						
0250	0952						
0500	0923						
0750	0601						

Primary Route Interchange Exit Number

5

Secondary Route Interchange Exit Number

PennDOT Type 10 Map View:



Last Date Modified:

Apr 3, 2023

County: 49

RMS Interchange Information

Print Form

Interchange Number: 8007

Bureau of Maintenance & Operations
Asset Management Division



Interchange Name: BROADWAY INT

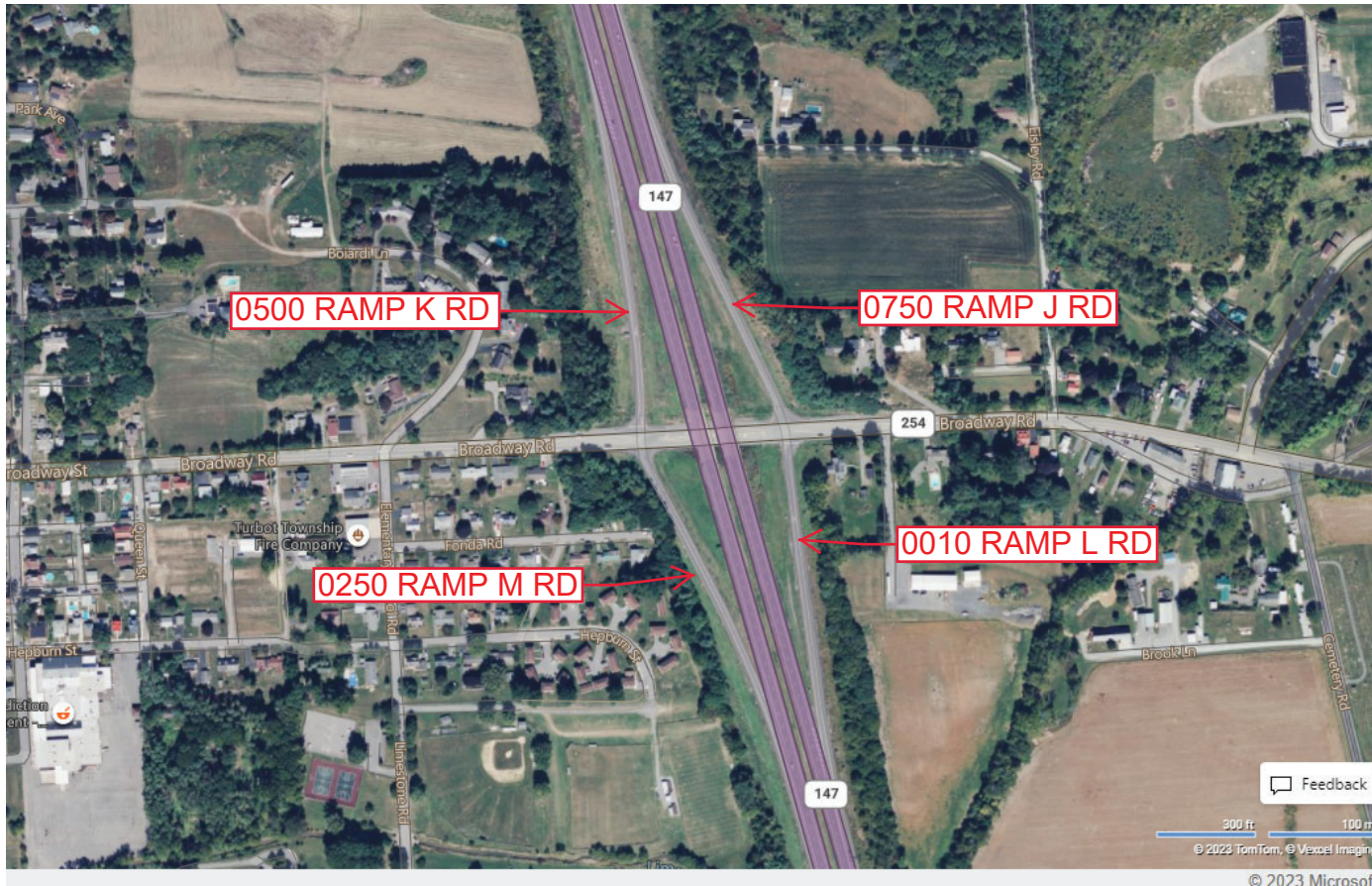
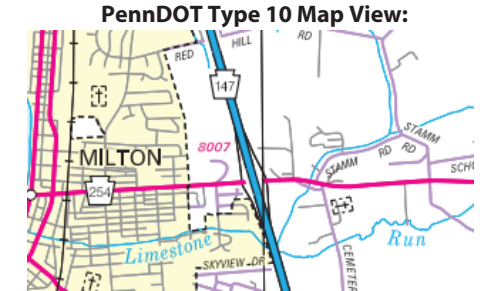
Intersecting SR's: PA 147 & PA 254 Broadway Rd

Ramp Segment Number and Ramp Segment Length Information:

Segment	Length	Segment	Length	Segment	Length	Segment	Length
0010	0860						
0250	0818						
0500	0884						
0750	0868						

Primary Route Interchange Exit Number

Secondary Route Interchange Exit Number



Feedback
300 ft 100 m
© 2023 TomTom, © Vexcel Imaging
© 2023 Microsoft

Last Date Modified: Apr 3, 2023

County: 49

RMS Interchange Information

Print Form

Interchange Number: 8008

Bureau of Maintenance & Operations
Asset Management Division



Interchange Name: WATSONTOWN & MCEWENS INT

Intersecting SR's: I-180 & SR 1007 Susquehanna Tr

Ramp Segment Number and Ramp Segment Length Information:

Segment	Length	Segment	Length	Segment	Length	Segment	Length
0010	1048						
0250	0935						
0500	0938						
0750	0802						

Primary Route
Interchange Exit
Number

Secondary Route
Interchange Exit
Number

PennDOT Type 10 Map View:



Feedback
300 ft 100 m
© 2023 TomTom, © Vexcel Imaging
© 2023 Microsoft

Last Date Modified: Apr 3, 2023

County: 49

RMS Interchange Information

Print Form

Interchange Number: 8009

Bureau of Maintenance & Operations
Asset Management Division



Interchange Name: RIDGE ROAD INT

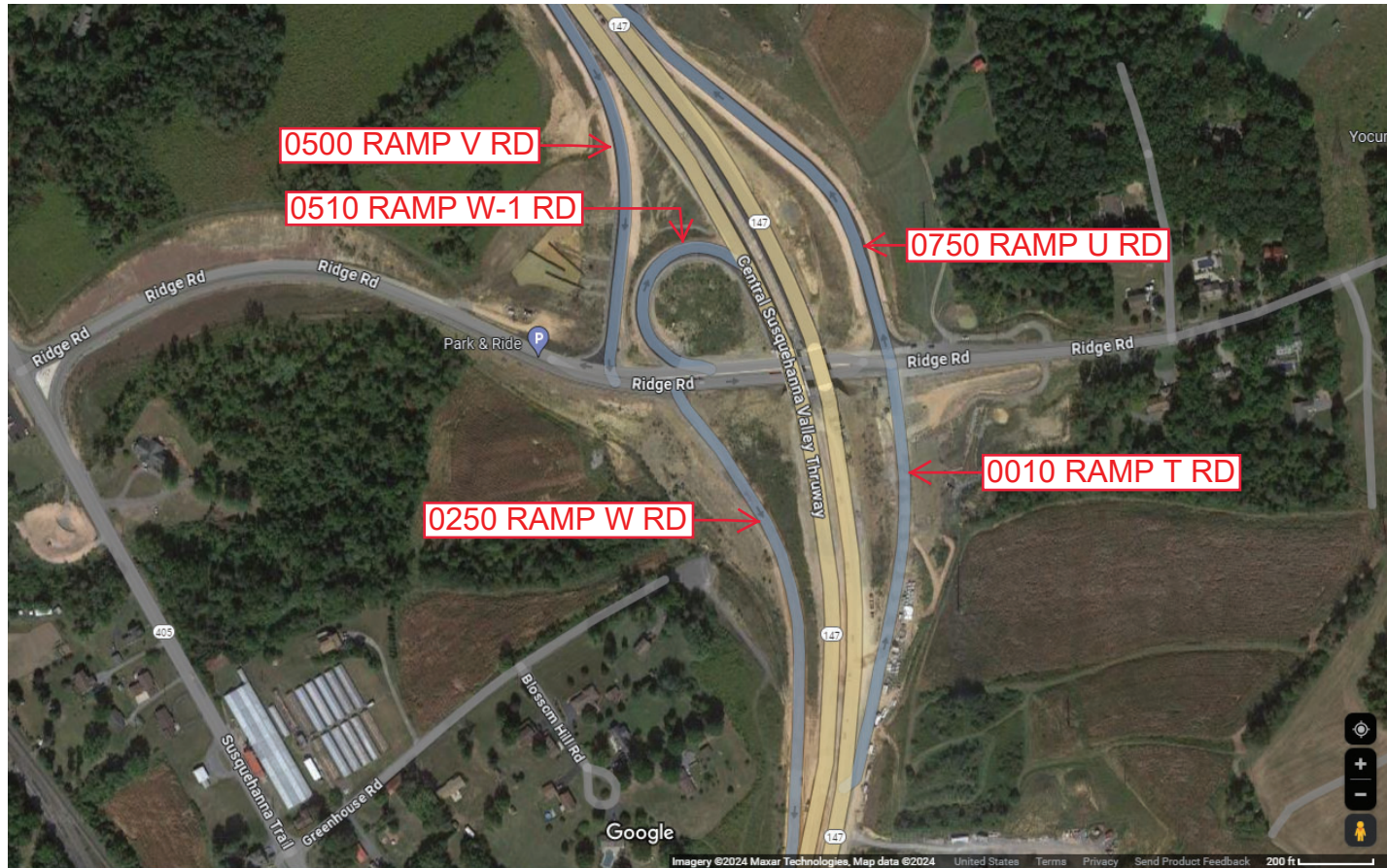
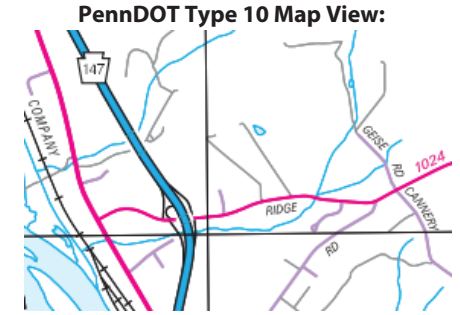
Intersecting SR's: PA 147 & SR 1024 Ridge Rd

Ramp Segment Number and Ramp Segment Length Information:

Segment	Length	Segment	Length	Segment	Length	Segment	Length
0010	0850						
0250	1284						
0500	1126						
0510	0508						
0750	1156						

Primary Route Interchange Exit Number

Secondary Route Interchange Exit Number



Last Date Modified: Apr 22, 2024

County: 49

RMS Interchange Information

Print Form

Interchange Number: 8010

Bureau of Maintenance & Operations
Asset Management Division



Interchange Name: LEWISBURG INT

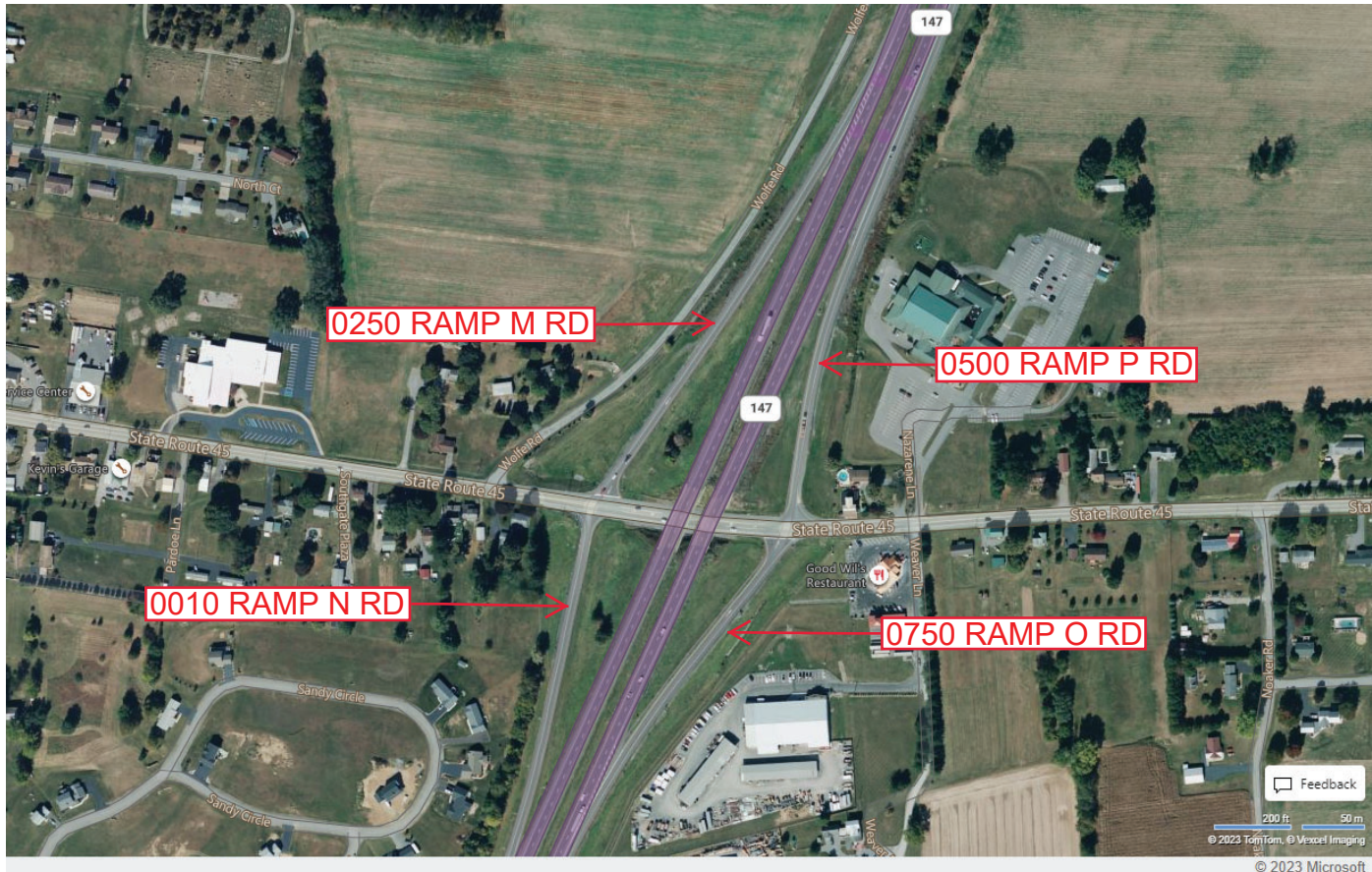
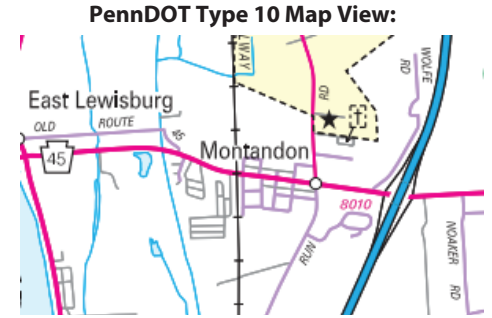
Intersecting SR's: PA 147 & PA 45 Main St

Ramp Segment Number and Ramp Segment Length Information:

Segment	Length	Segment	Length	Segment	Length	Segment	Length
0010	0929						
0250	1099						
0500	0793						
0750	0721						

Primary Route Interchange Exit Number

Secondary Route Interchange Exit Number



Last Date Modified: Apr 4, 2023

County: 49

RMS Interchange Information

Print Form

Interchange Number: 8013

Bureau of Maintenance & Operations
Asset Management Division



Interchange Name: SUNBURY INT

Intersecting SR's: PA , PA 147 Front St & (City) 2nd St

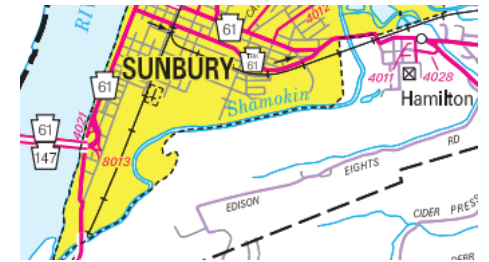
Ramp Segment Number and Ramp Segment Length Information:

Segment	Length	Segment	Length	Segment	Length	Segment	Length
0500	0822						
0752	0299						
0762	0442						
0772	0136						

Primary Route Interchange Exit Number

Secondary Route Interchange Exit Number

PennDOT Type 10 Map View:



Last Date Modified: Apr 4, 2023

County: 49

RMS Interchange Information

Print Form

Interchange Number: 9401

Bureau of Maintenance & Operations
Asset Management Division



Interchange Name: SR 0061 JUGHANDLE RD

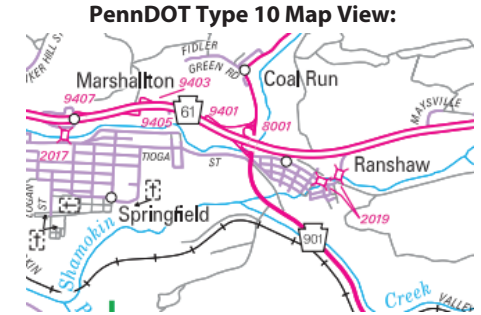
Intersecting SR's: SR 0061 SH

Ramp Segment Number and Ramp Segment Length Information:

Segment	Length	Segment	Length	Segment	Length	Segment	Length
0010	0503						

Primary Route Interchange Exit Number

Secondary Route Interchange Exit Number



Last Date Modified: Apr 5, 2023

County: 49

RMS Interchange Information

Bureau of Maintenance & Operations
Asset Management Division

Print Form



Interchange Number: 9402

Interchange Name: PA 0061 & FIFTH ST JUGHANDLE RD

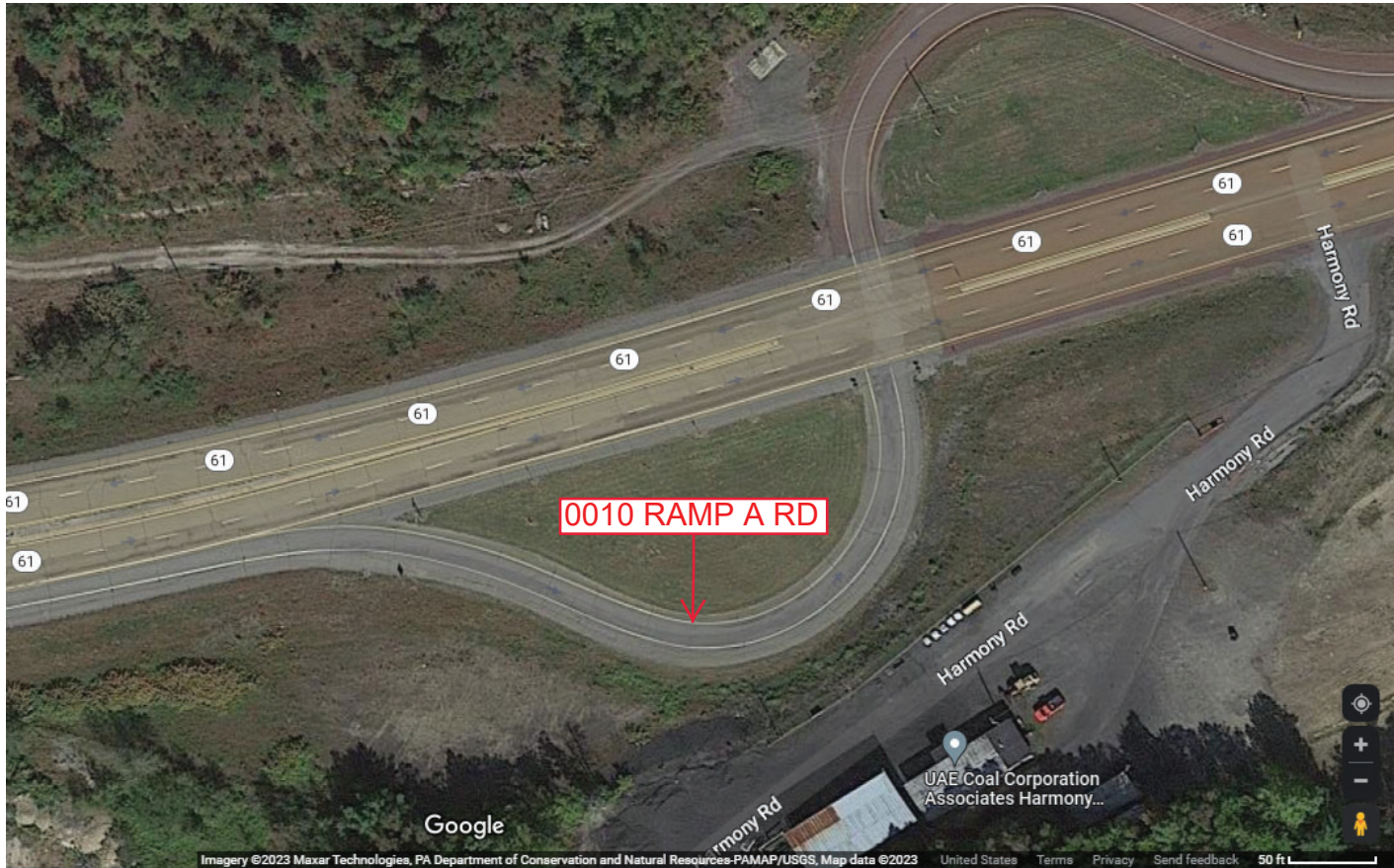
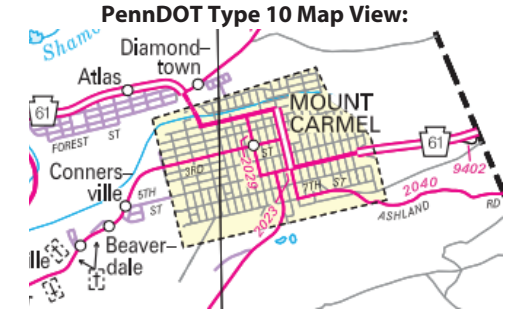
Intersecting SR's: PA 61 Fifth St

Ramp Segment Number and Ramp Segment Length Information:

Segment	Length	Segment	Length	Segment	Length	Segment	Length
0010	0412						

Primary Route Interchange Exit Number

Secondary Route Interchange Exit Number



Last Date Modified:

Apr 5, 2023

County: 49

RMS Interchange Information

Print Form

Interchange Number: 9403

Bureau of Maintenance & Operations
Asset Management Division



Interchange Name: SR 0061 JUGHANDLE RD

Intersecting SR's: SR 0061 SH

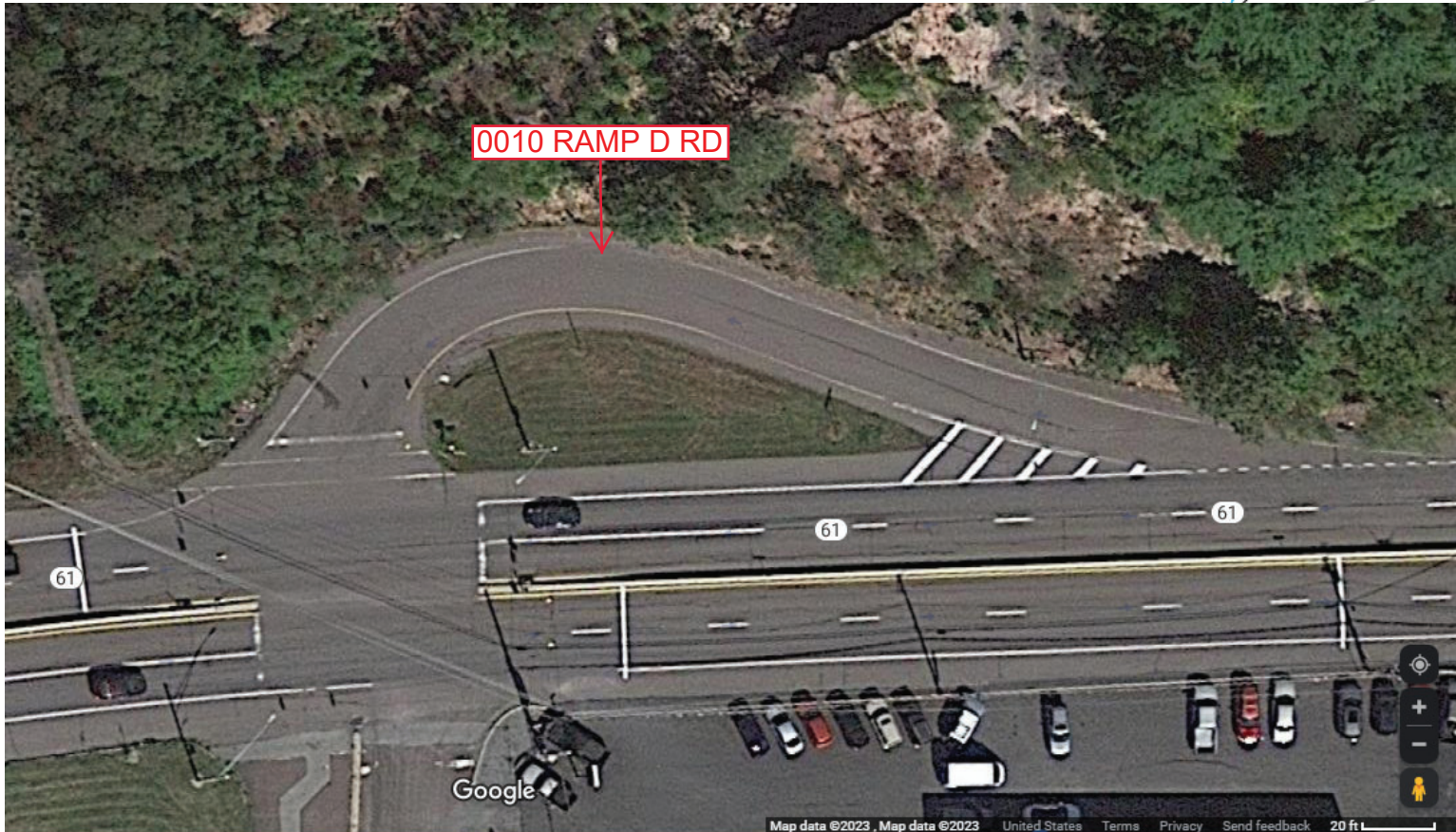
Ramp Segment Number and Ramp Segment Length Information:

Segment	Length	Segment	Length	Segment	Length	Segment	Length
0010	0213						

Primary Route Interchange Exit Number

Secondary Route Interchange Exit Number

PennDOT Type 10 Map View:



Last Date Modified: Apr 5, 2023

County: 49

RMS Interchange Information

Print Form

Interchange Number: 9405

Bureau of Maintenance & Operations
Asset Management Division



Interchange Name: OLD AMES PLAZE DR JUGHANDLE RD

Intersecting SR's: PA 61 & PRDR Old Plaza Rd

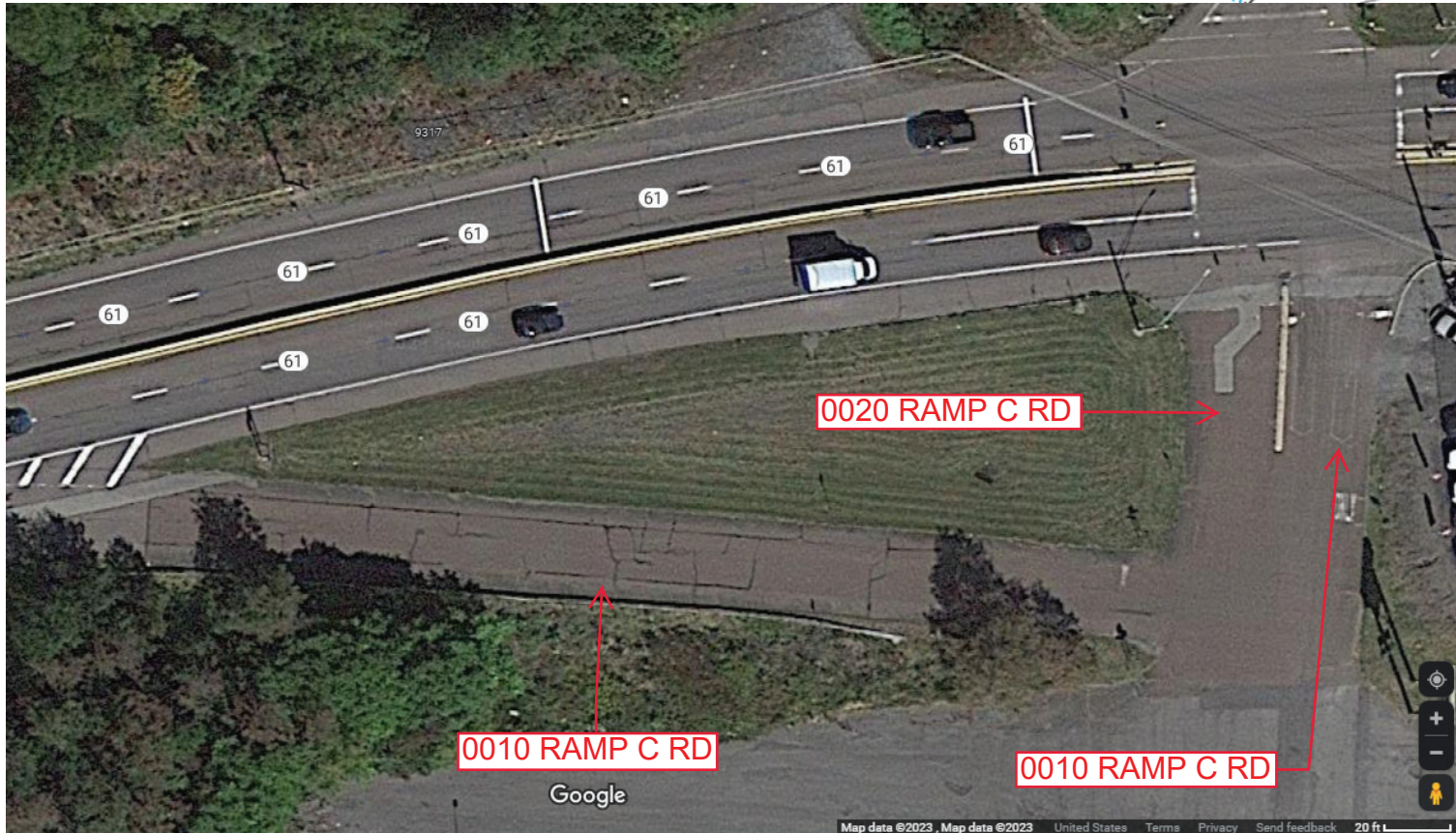
Ramp Segment Number and Ramp Segment Length Information:

Segment	Length	Segment	Length	Segment	Length	Segment	Length
0010	0455						
0020	0109						

Primary Route
Interchange Exit
Number

Secondary Route
Interchange Exit
Number

PennDOT Type 10 Map View:



Last Date Modified:

Apr 5, 2023

County: 49

RMS Interchange Information

Print Form

Interchange Number: 9407

Bureau of Maintenance & Operations
Asset Management Division



Interchange Name: SHAMOKIN JUGHANDLE RD

Intersecting SR's: PA 61

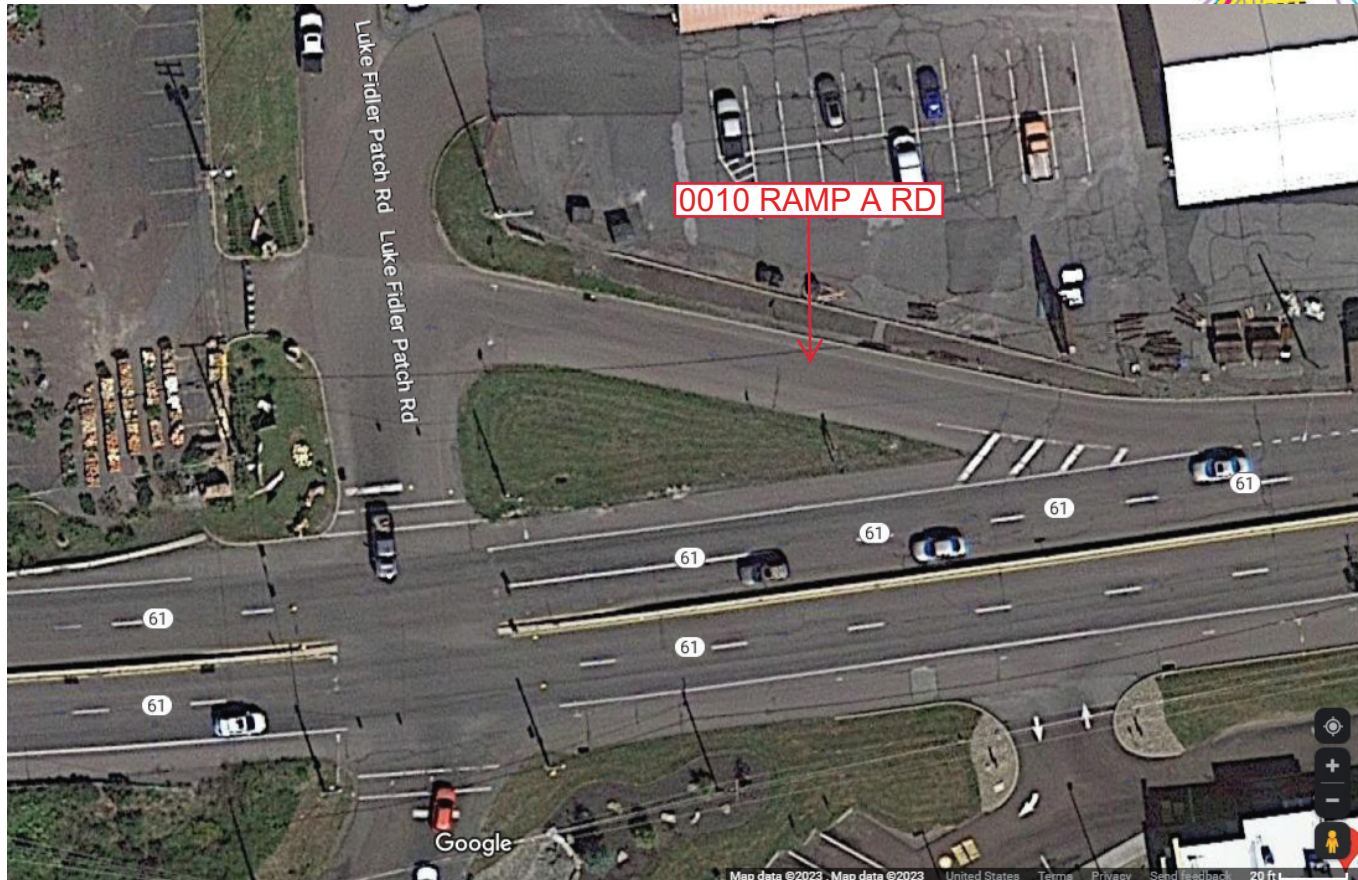
Ramp Segment Number and Ramp Segment Length Information:

Segment	Length	Segment	Length	Segment	Length	Segment	Length
0010	0256						

Primary Route Interchange Exit Number

Secondary Route Interchange Exit Number

PennDOT Type 10 Map View:



Last Date Modified:

Apr 5, 2023

County: **49**

RMS Interchange Information

Print Form

Interchange Number: **9502**

Bureau of Maintenance & Operations
Asset Management Division



Interchange Name: **PARK & RIDE ROAD**

Intersecting SR's: **SR 1024 Ridge Rd**

Ramp Segment Number and Ramp Segment Length Information:

Segment	Length	Segment	Length	Segment	Length	Segment	Length
0010	0338						

Primary Route Interchange Exit Number

Secondary Route Interchange Exit Number

PennDOT Type 10 Map View:



Image not available at this time.

Last Date Modified: **Apr 22, 2024**