

County: 54

RMS Interchange Information

Print Form

Interchange Number: 8003

Bureau of Maintenance & Operations
Asset Management Division



Interchange Name: SELINGSGROVE INT

Intersecting SR's: US 11 Marine Corps Leag Mem Hw PA 35

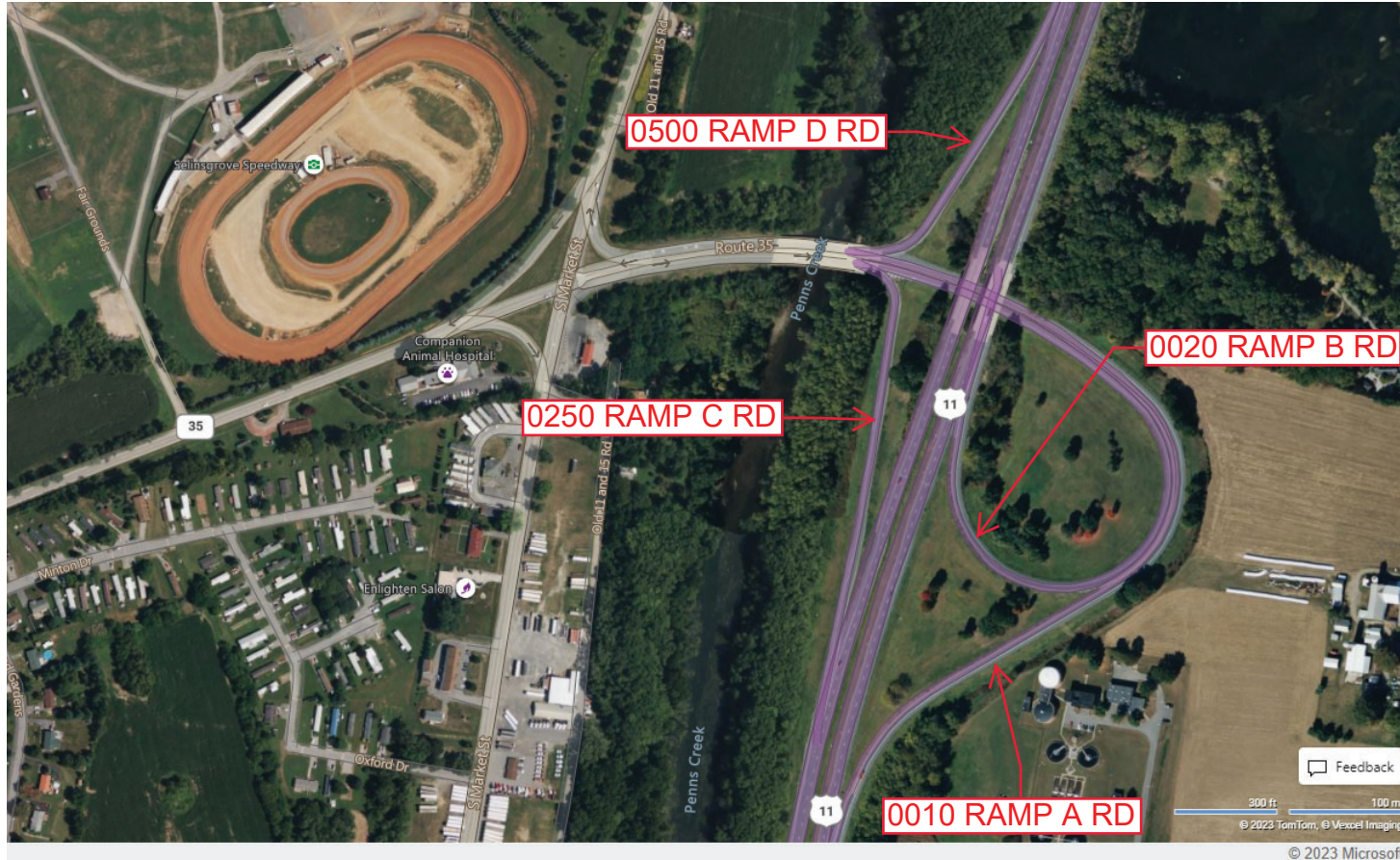
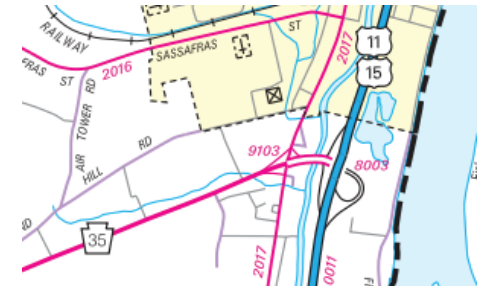
Ramp Segment Number and Ramp Segment Length Information:

Segment	Length	Segment	Length	Segment	Length	Segment	Length
0010	2308						
0020	1950						
0250	1044						
0500	0758						

Primary Route
Interchange Exit
Number

Secondary Route
Interchange Exit
Number

PennDOT Type 10 Map View:



Last Date Modified: Apr 6, 2023

County: 54

RMS Interchange Information

Print Form

Interchange Number: 8005

Bureau of Maintenance & Operations
Asset Management Division



Interchange Name: SELINGROVE & SHAMOKIN INT

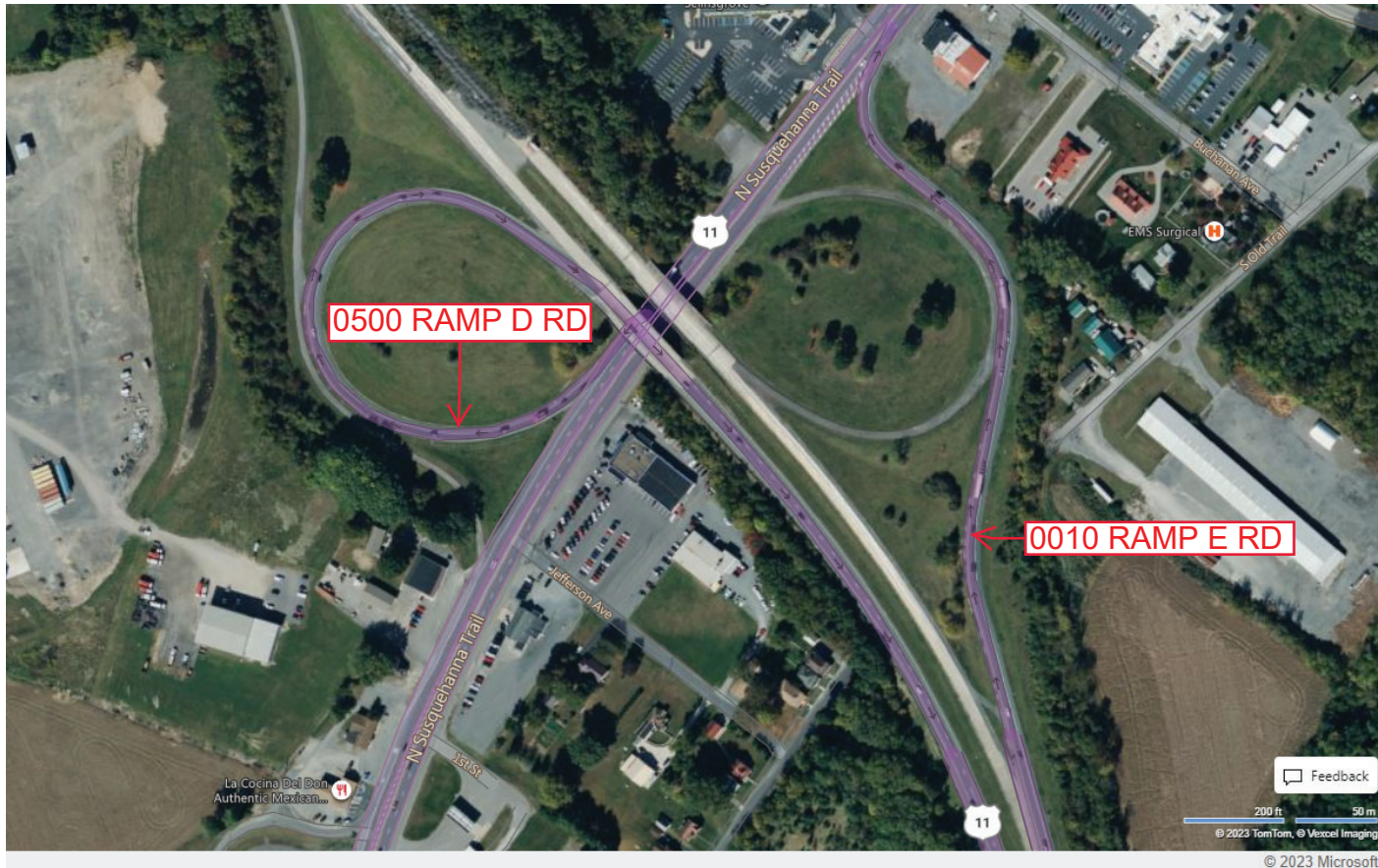
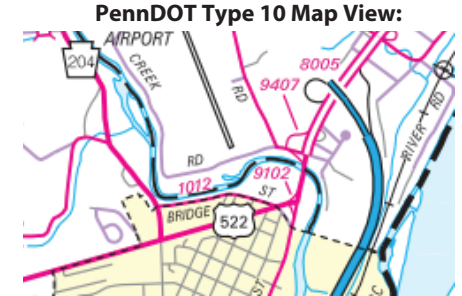
Intersecting SR's: US 11 Marine Corps Leag Mem & US 522 Susqurhanna Tr

Ramp Segment Number and Ramp Segment Length Information:

Segment	Length	Segment	Length	Segment	Length	Segment	Length
0010	1478						
0500	1473						

Primary Route
Interchange Exit
Number

Secondary Route
Interchange Exit
Number



Last Date Modified:

Jan 6, 2025

County: 54

RMS Interchange Information

Print Form

Interchange Number: 8007

Bureau of Maintenance & Operations
Asset Management Division



Interchange Name: SUNBURY INT

Intersecting SR's: US 11 Marine Corps Leag Mem & PA 61 Baldwin Bl

Ramp Segment Number and Ramp Segment Length Information:

Segment	Length	Segment	Length	Segment	Length	Segment	Length
0010	0863						
0250	2708						
0750	2532						
0760	0250						
0770	0514						

Primary Route Interchange Exit Number

Secondary Route Interchange Exit Number

PennDOT Type 10 Map View:



Feedback

200 ft 50 m

© 2023 TomTom, © Vexcel Imaging

© 2023 Microsoft

Last Date Modified: Jan 6, 2025

County: 54

RMS Interchange Information

Print Form

Interchange Number: 8015

Bureau of Maintenance & Operations
Asset Management Division



Interchange Name: US 15 & PA 147 INT

Intersecting SR's: US 15 & PA 147 SH

Ramp Segment Number and Ramp Segment Length Information:

Segment	Length	Segment	Length	Segment	Length	Segment	Length
0250	1307						
0260	0581						

Primary Route
Interchange Exit
Number

Secondary Route
Interchange Exit
Number

PennDOT Type 10 Map View:



Last Date Modified:

Apr 18, 2024

County: 54

RMS Interchange Information

Print Form

Interchange Number: 9101

Bureau of Maintenance & Operations
Asset Management Division



Interchange Name: US 11 SOUTH

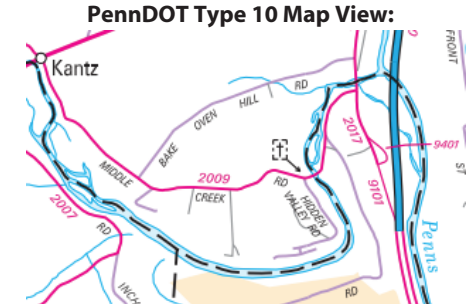
Intersecting SR's: US 11 Marine Corps Leag Mem & SR 2017 Market St

Ramp Segment Number and Ramp Segment Length Information:

Segment	Length	Segment	Length	Segment	Length	Segment	Length
0010	1148						

Primary Route Interchange Exit Number

Secondary Route Interchange Exit Number



Last Date Modified:

Apr 6, 2023

County: 54

RMS Interchange Information

Print Form

Interchange Number: 9102

Bureau of Maintenance & Operations
Asset Management Division



Interchange Name: US 22 WYE

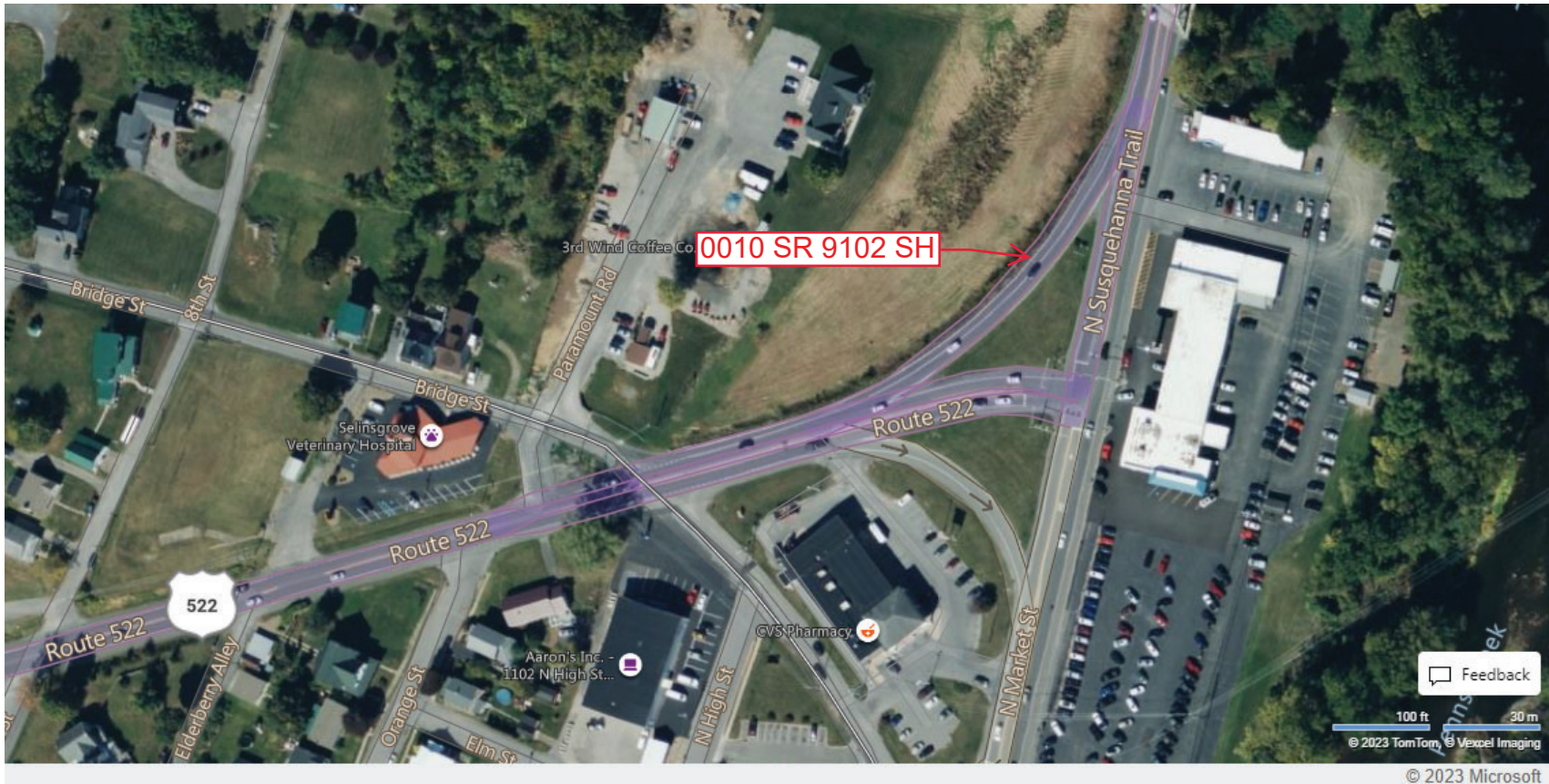
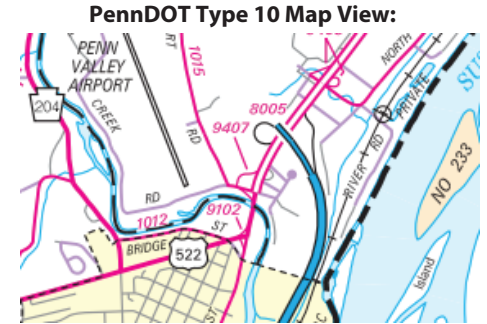
Intersecting SR's: US 522 Susquehanna Tr

Ramp Segment Number and Ramp Segment Length Information:

Segment	Length	Segment	Length	Segment	Length	Segment	Length
0010	0232						

Primary Route Interchange Exit Number

Secondary Route Interchange Exit Number



Last Date Modified: Apr 6, 2023

County: 54

RMS Interchange Information

Print Form

Interchange Number: 9103

Bureau of Maintenance & Operations
Asset Management Division



Interchange Name: PA 35 WYE

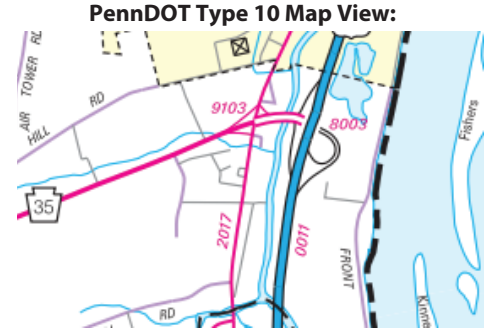
Intersecting SR's: PA 35 & SR 2017 Market St

Ramp Segment Number and Ramp Segment Length Information:

Segment	Length	Segment	Length	Segment	Length	Segment	Length
0250	0479						

Primary Route Interchange Exit Number

Secondary Route Interchange Exit Number



Last Date Modified: Apr 7, 2023

County: 54

RMS Interchange Information

Print Form

Interchange Number: 9202

Bureau of Maintenance & Operations
Asset Management Division



Interchange Name: US 11 ROADSIDE REST

Intersecting SR's: US 11

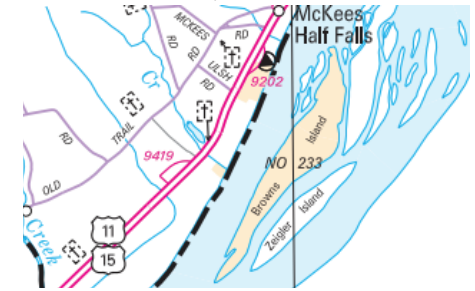
Ramp Segment Number and Ramp Segment Length Information:

Segment	Length	Segment	Length	Segment	Length	Segment	Length
0010	0475						

Primary Route
Interchange Exit
Number

Secondary Route
Interchange Exit
Number

PennDOT Type 10 Map View:



Last Date Modified:

Apr 7, 2023

County: 54

RMS Interchange Information

Print Form

Interchange Number: 9401

Bureau of Maintenance & Operations
Asset Management Division



Interchange Name: MARKET ST JUGHANDLE

Intersecting SR's: SR 2017 Market St

Ramp Segment Number and Ramp Segment Length Information:

Segment	Length	Segment	Length	Segment	Length	Segment	Length
0010	0285						

Primary Route Interchange Exit Number

Secondary Route Interchange Exit Number

PennDOT Type 10 Map View:



Last Date Modified: Jan 15, 2025

County: 54

RMS Interchange Information

Print Form

Interchange Number: 9403

Bureau of Maintenance & Operations
Asset Management Division



Interchange Name: LINE NO 2 RD CROSSOVER

Intersecting SR's: US 15 & T513 Line No 2 Rd

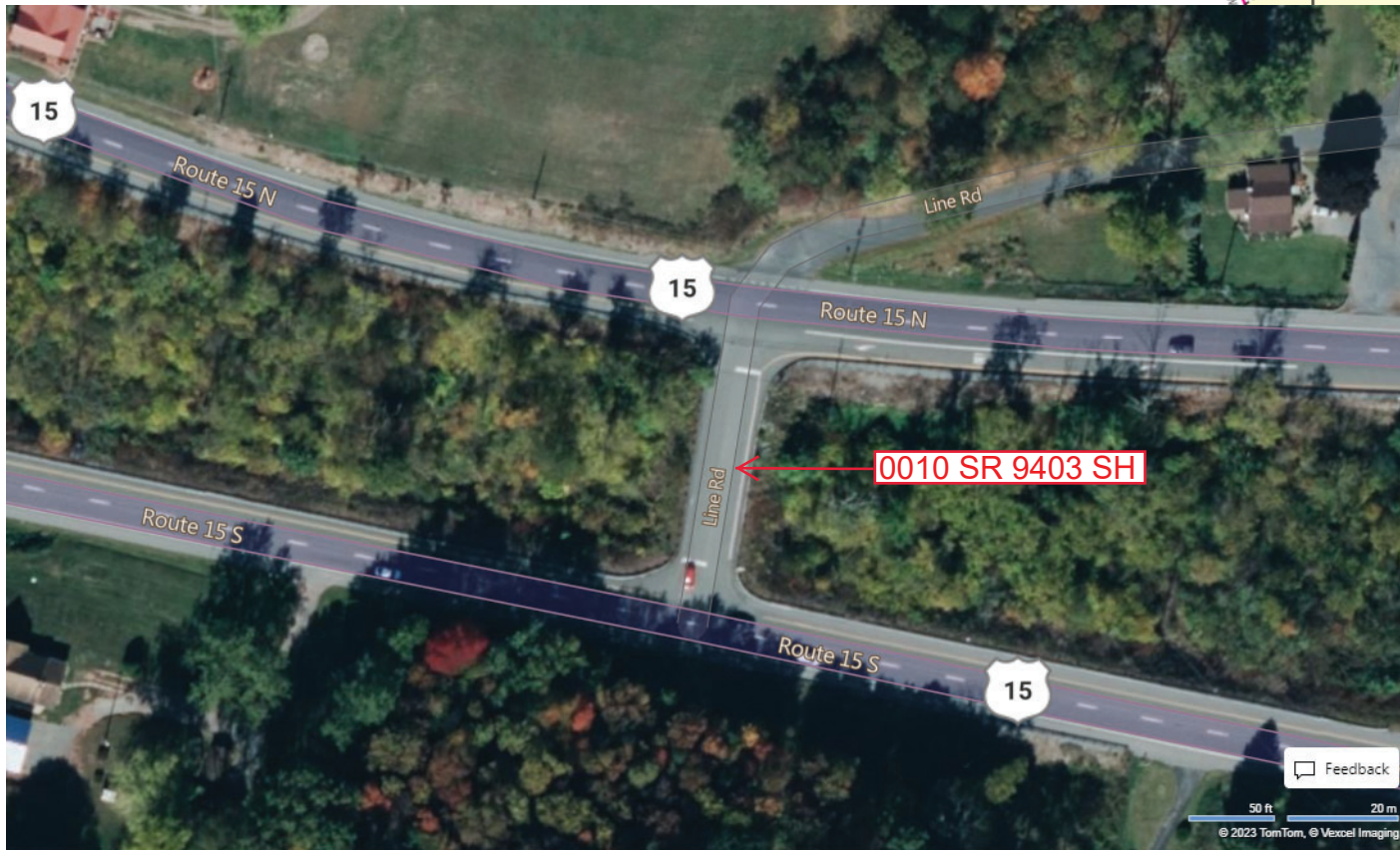
Ramp Segment Number and Ramp Segment Length Information:

Segment	Length	Segment	Length	Segment	Length	Segment	Length
0010	0192						

Primary Route Interchange Exit Number

Secondary Route Interchange Exit Number

PennDOT Type 10 Map View:



Feedback

50 ft 20 m

© 2023 TomTom, © Vexcel Imaging

© 2023 Microsoft

Last Date Modified:

Apr 11, 2023

County: 54

RMS Interchange Information

Print Form

Interchange Number: 9405

Bureau of Maintenance & Operations
Asset Management Division



Interchange Name: PENN VALLEY DR INT

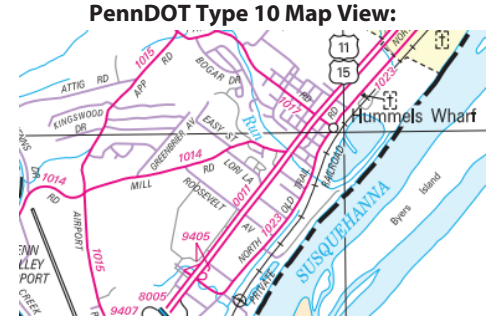
Intersecting SR's: US 11 Susquehanna Tr & SR 1023 Susque Valley Mall Dr

Ramp Segment Number and Ramp Segment Length Information:

Segment	Length	Segment	Length	Segment	Length	Segment	Length
0500	0524						
0750	0628						

Primary Route Interchange Exit Number

Secondary Route Interchange Exit Number



Last Date Modified:

Apr 11, 2023

County: 54

RMS Interchange Information

Print Form

Interchange Number: 9407

Bureau of Maintenance & Operations
Asset Management Division



Interchange Name: SR 1015 AIRPORT RD INT

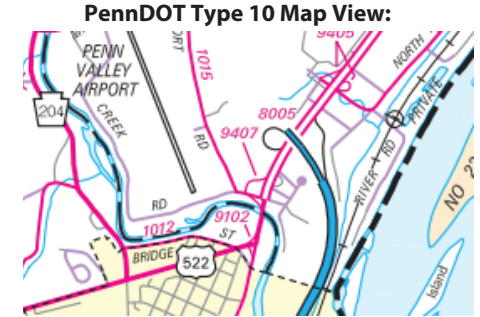
Intersecting SR's: US 522 Susquehanna Tr & SR 1015 Airport Rd

Ramp Segment Number and Ramp Segment Length Information:

Segment	Length	Segment	Length	Segment	Length	Segment	Length
0010	0638						

Primary Route Interchange Exit Number

Secondary Route Interchange Exit Number



Last Date Modified: Apr 12, 2023

County: 54

RMS Interchange Information

Print Form

Interchange Number: 9411

Bureau of Maintenance & Operations
Asset Management Division



Interchange Name: US 11 MARINE CORPS LEAG MEM HW

Intersecting SR's: US 11 & T347 Old Trail Rd

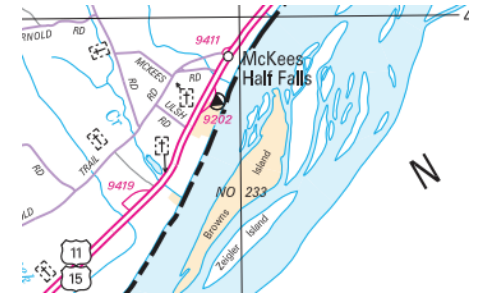
Ramp Segment Number and Ramp Segment Length Information:

Segment	Length	Segment	Length	Segment	Length	Segment	Length
0010	0550						
0020	0435						

Primary Route
Interchange Exit
Number

Secondary Route
Interchange Exit
Number

PennDOT Type 10 Map View:



Last Date Modified:

Apr 12, 2023

County: 54

RMS Interchange Information

Print Form

Interchange Number: 9413

Bureau of Maintenance & Operations
Asset Management Division



Interchange Name: US 11 NORTH MAIN ST

Intersecting SR's: US 11 & North Main St

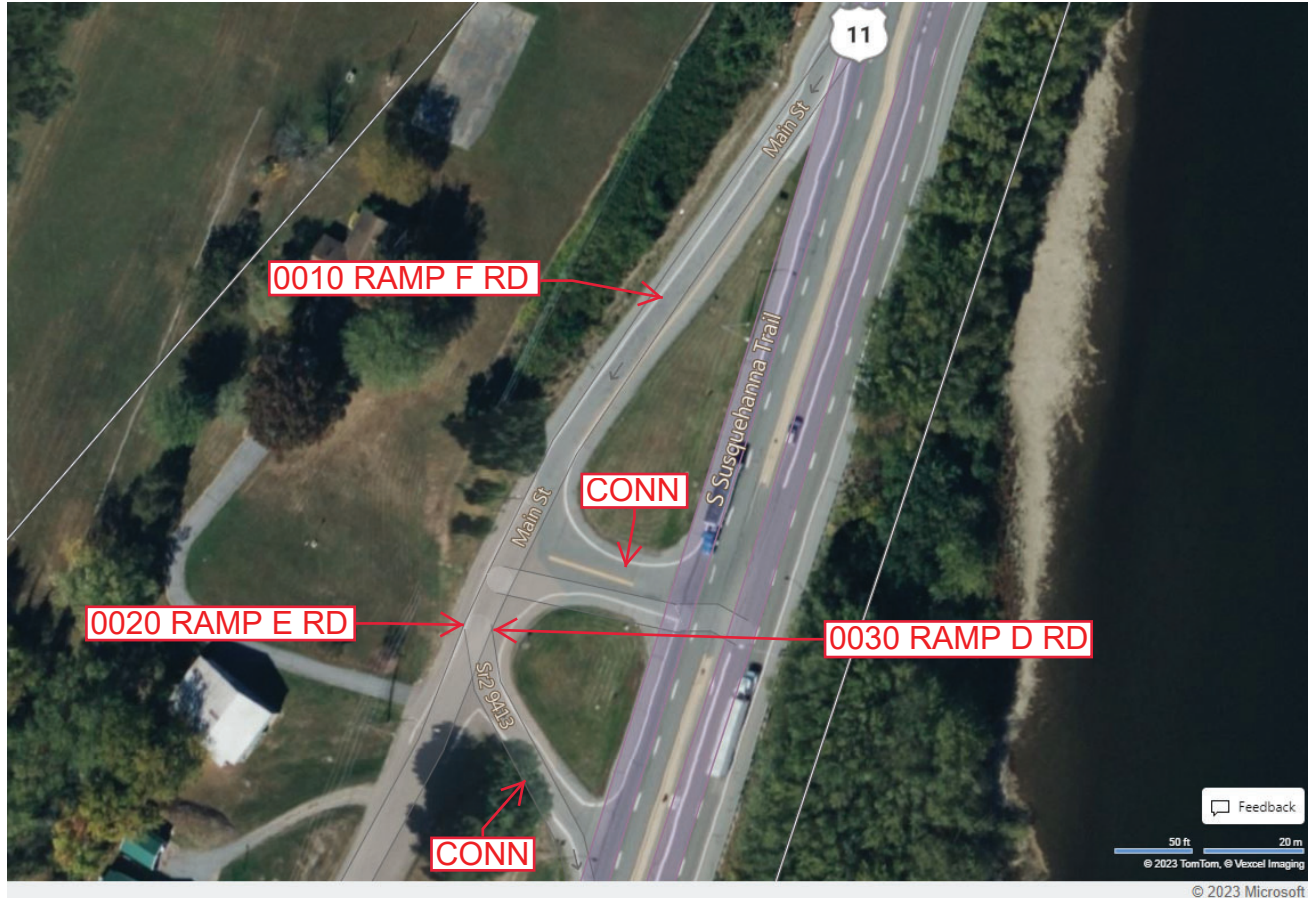
Ramp Segment Number and Ramp Segment Length Information:

Segment	Length	Segment	Length	Segment	Length	Segment	Length
0010	0327						
0020	0324						
0030	0324						

Primary Route Interchange Exit Number

Secondary Route Interchange Exit Number

PennDOT Type 10 Map View:



Feedback
50 ft 20 m
© 2023 TomTom, © Vexcel Imaging
© 2023 Microsoft

Last Date Modified:

Apr 12, 2023

County: 54

RMS Interchange Information

Print Form

Interchange Number: 9415

Bureau of Maintenance & Operations
Roadway Management Division



Interchange Name: US 11 & AQUEDUCT HOLLOW RD

Intersecting SR's: US 11 Marine Corps Leag Mem Hw & Aqueduct Hollow Rd

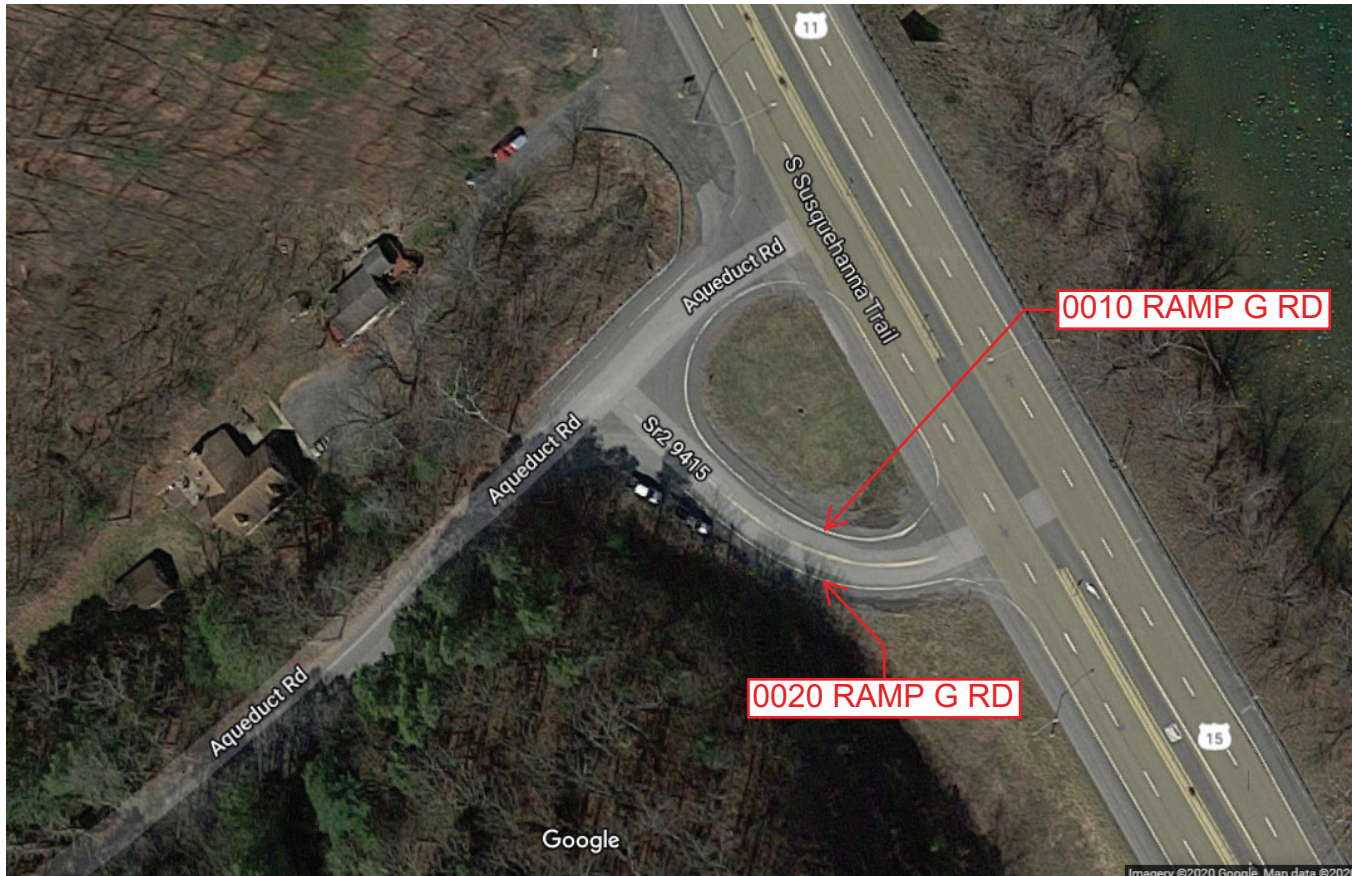
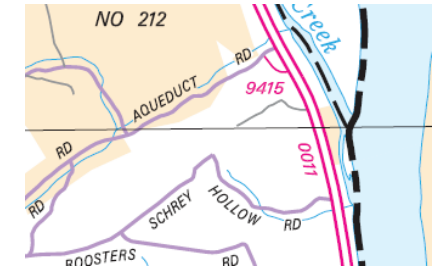
Ramp Segment Number and Ramp Segment Length Information:

Segment	Length	Segment	Length	Segment	Length	Segment	Length
0010	0205						
0020	0205						

Primary Route
Interchange Exit
Number

Secondary Route
Interchange Exit
Number

PennDOT Type 10 Map View:



Last Date Modified:

Apr 29, 2020

County: 54

RMS Interchange Information

Print Form

Interchange Number: 9419

Bureau of Maintenance & Operations
Asset Management Division



Interchange Name: US 11 MARINR CORPS LEAG MEM HW

Intersecting SR's: US 11 Marine Corps Mem Hw

Ramp Segment Number and Ramp Segment Length Information:

Segment	Length	Segment	Length	Segment	Length	Segment	Length
0010	0864						

Primary Route
Interchange Exit
Number

Secondary Route
Interchange Exit
Number

PennDOT Type 10 Map View:



Last Date Modified: Apr 14, 2023