

County: 58

RMS Interchange Information

Bureau of Maintenance & Operations
Asset Management Division

Print Form



Interchange Number: 8001

Interchange Name: LIBERTY & MORRIS INT

Intersecting SR's: US 15 & PA 414

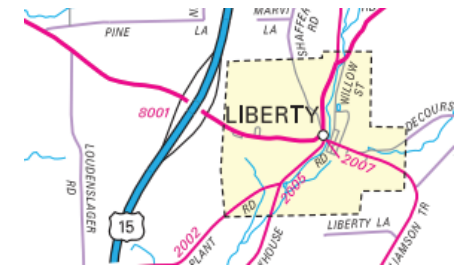
Ramp Segment Number and Ramp Segment Length Information:

Segment	Length	Segment	Length	Segment	Length	Segment	Length
0010	1103						
0250	0592						
0500	0737						
0750	1960						

Primary Route Interchange Exit Number: 162

Secondary Route Interchange Exit Number

PennDOT Type 10 Map View:



Last Date Modified:

Apr 18, 2023

County: 58

RMS Interchange Information

Print Form

Interchange Number: 8002

Bureau of Maintenance & Operations
Asset Management Division



Interchange Name: MANSFIELD & WELLSBORO INT

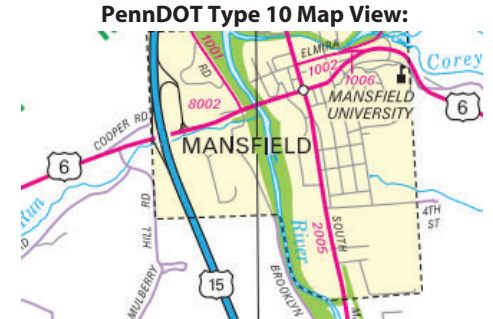
Intersecting SR's: US 6 Wellsboro St & US 15 H G Strait Mem Hw

Ramp Segment Number and Ramp Segment Length Information:

Segment	Length	Segment	Length	Segment	Length	Segment	Length
0010	1025						
0250	1207						
0502	2255						
0512	2062						

Primary Route Interchange Exit Number: 182

Secondary Route Interchange Exit Number



Last Date Modified:

Apr 18, 2023

County: 58

RMS Interchange Information

Print Form

Interchange Number: 8003

Bureau of Maintenance & Operations
Asset Management Division



Interchange Name: MAIN ST INT

Intersecting SR's: US 15 HG Strait Mem Hw & SR 2005 Main St (BUS15)

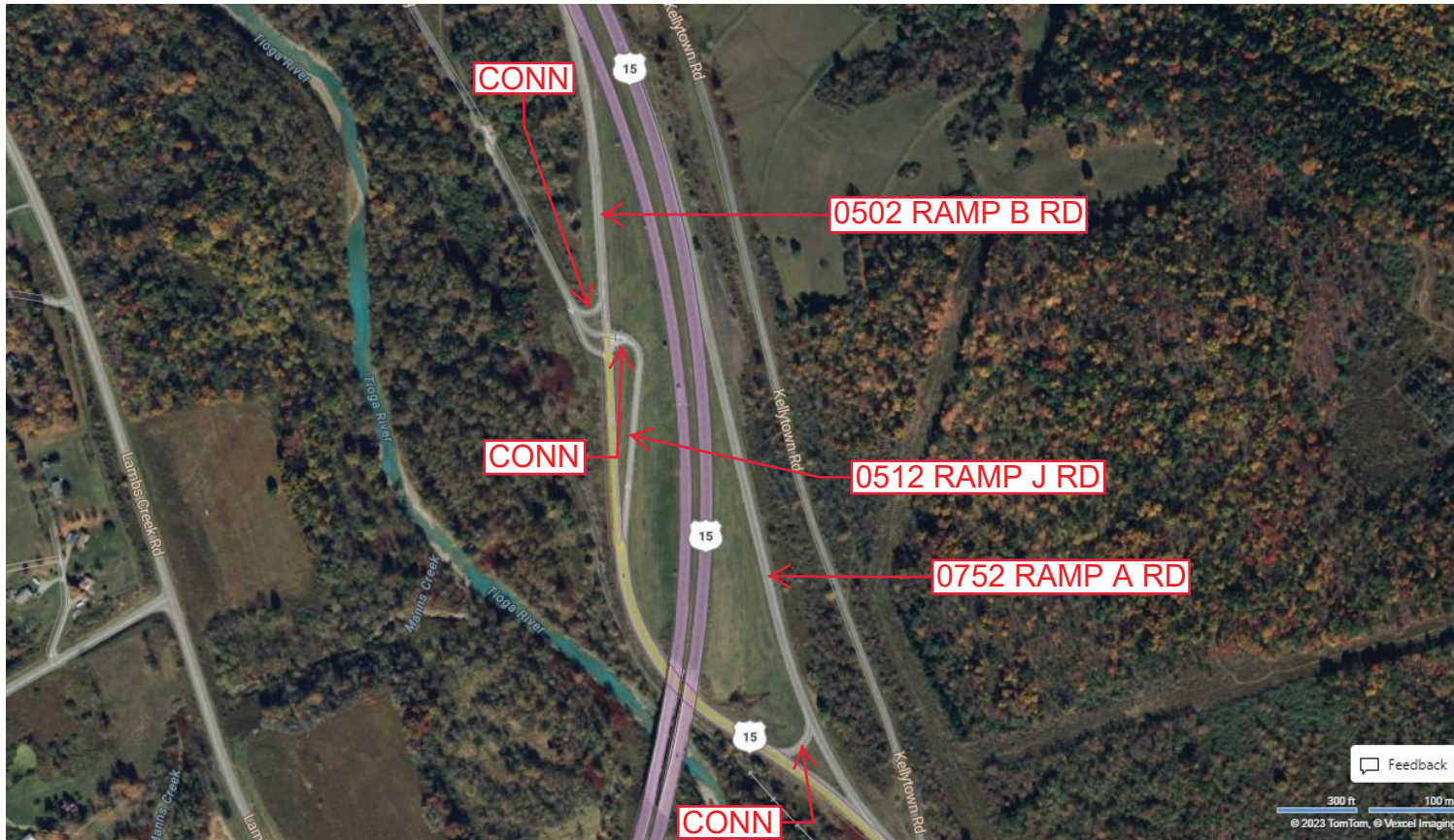
Ramp Segment Number and Ramp Segment Length Information:

Segment	Length	Segment	Length	Segment	Length	Segment	Length
0502	3407						
0512	2263						
0752	1946						

Primary Route Interchange Exit Number

Secondary Route Interchange Exit Number

PennDOT Type 10 Map View:



Feedback
300 ft 100 m
© 2023 TomTom, © Vexcel Imaging
© 2023 Microsoft

Last Date Modified: Apr 25, 2023

County: 58

RMS Interchange Information

Print Form

Interchange Number: 8005

Bureau of Maintenance & Operations
Asset Management Division



Interchange Name: TIOGA INT

Intersecting SR's: US 15 Marine Corps Leag Mem Hw & PA 287

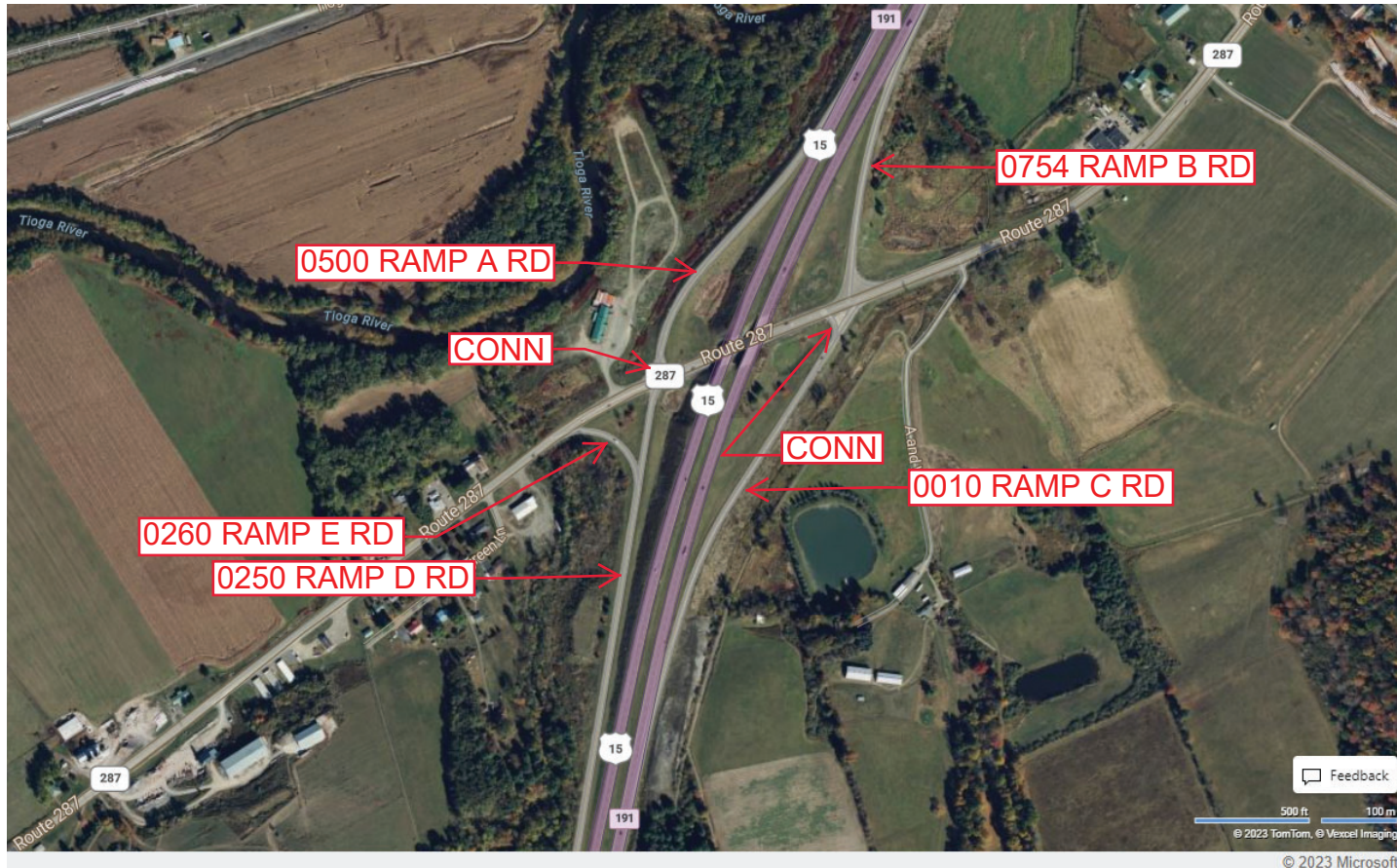
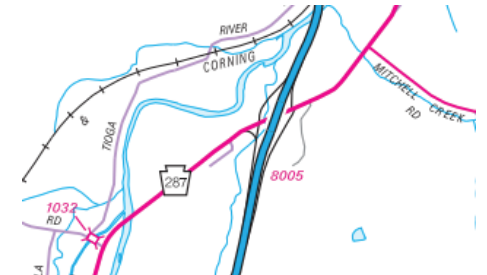
Ramp Segment Number and Ramp Segment Length Information:

Segment	Length	Segment	Length	Segment	Length	Segment	Length
0010	1798						
0250	2795						
0260	0316						
0500	1226						
0754	1000						

Primary Route Interchange Exit Number: 191

Secondary Route Interchange Exit Number

PennDOT Type 10 Map View:



Feedback
500 ft 100 m
© 2023 TomTom, © Vexcel Imaging
© 2023 Microsoft

Last Date Modified: Jan 17, 2025

County: 58

RMS Interchange Information

Print Form

Interchange Number: 8007

Bureau of Maintenance & Operations
Asset Management Division



Interchange Name: OLD ROUTE 15 RD INT

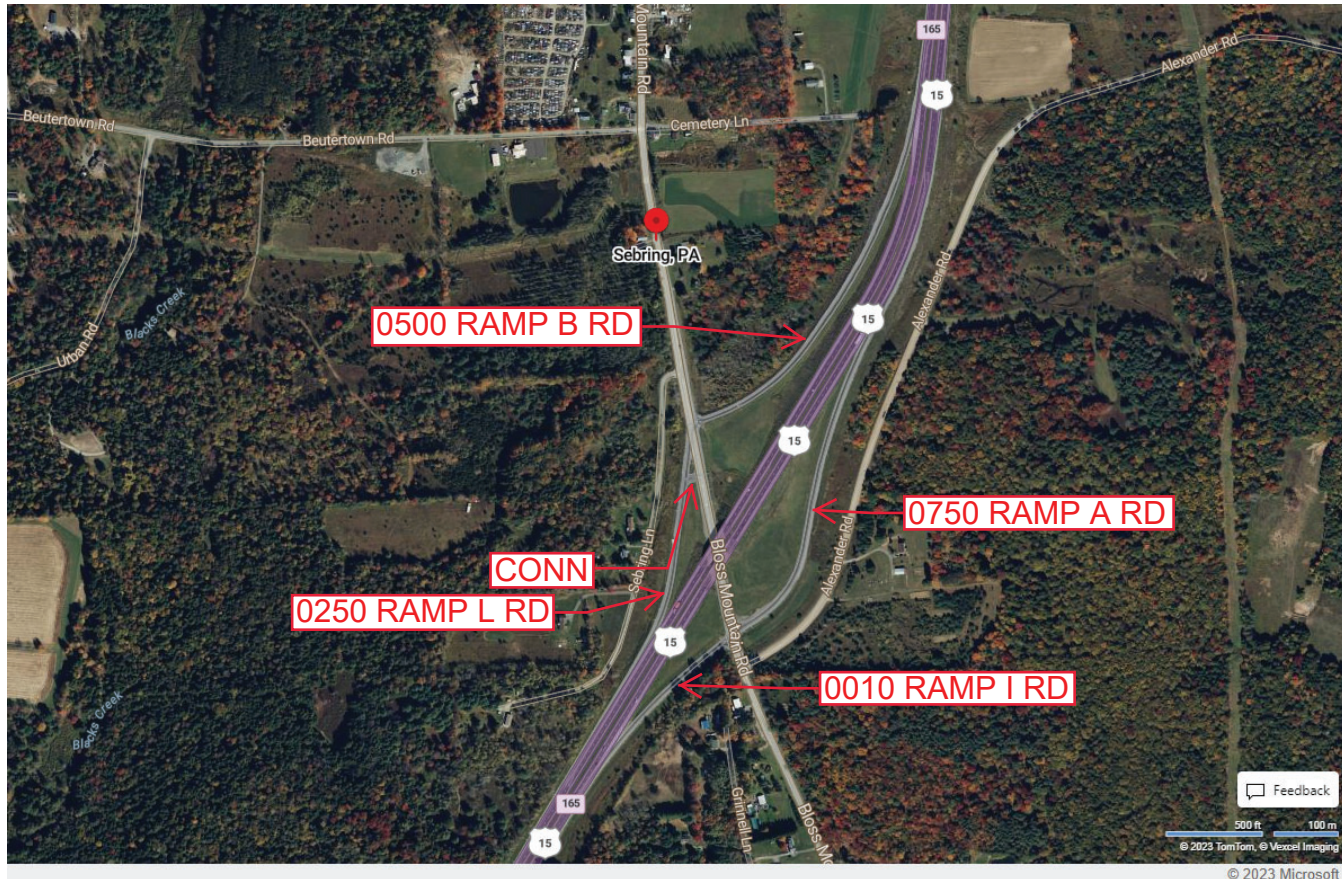
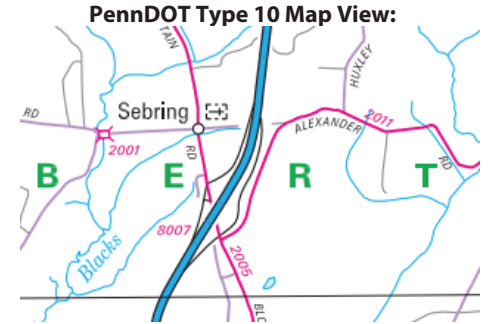
Intersecting SR's: US 15 & SR 2005 Old Route 15 Rd

Ramp Segment Number and Ramp Segment Length Information:

Segment	Length	Segment	Length	Segment	Length	Segment	Length
0010	0754						
0250	0894						
0500	1949						
0750	1678						

Primary Route Interchange Exit Number: 165

Secondary Route Interchange Exit Number



Last Date Modified:

Apr 26, 2023

County: 58

RMS Interchange Information

Print Form

Interchange Number: 8009

Bureau of Maintenance & Operations
Asset Management Division



Interchange Name: BLOSSBURG INT

Intersecting SR's: US 15 Willam B Wilson Hw & SR 2026 Boone Run Rd &

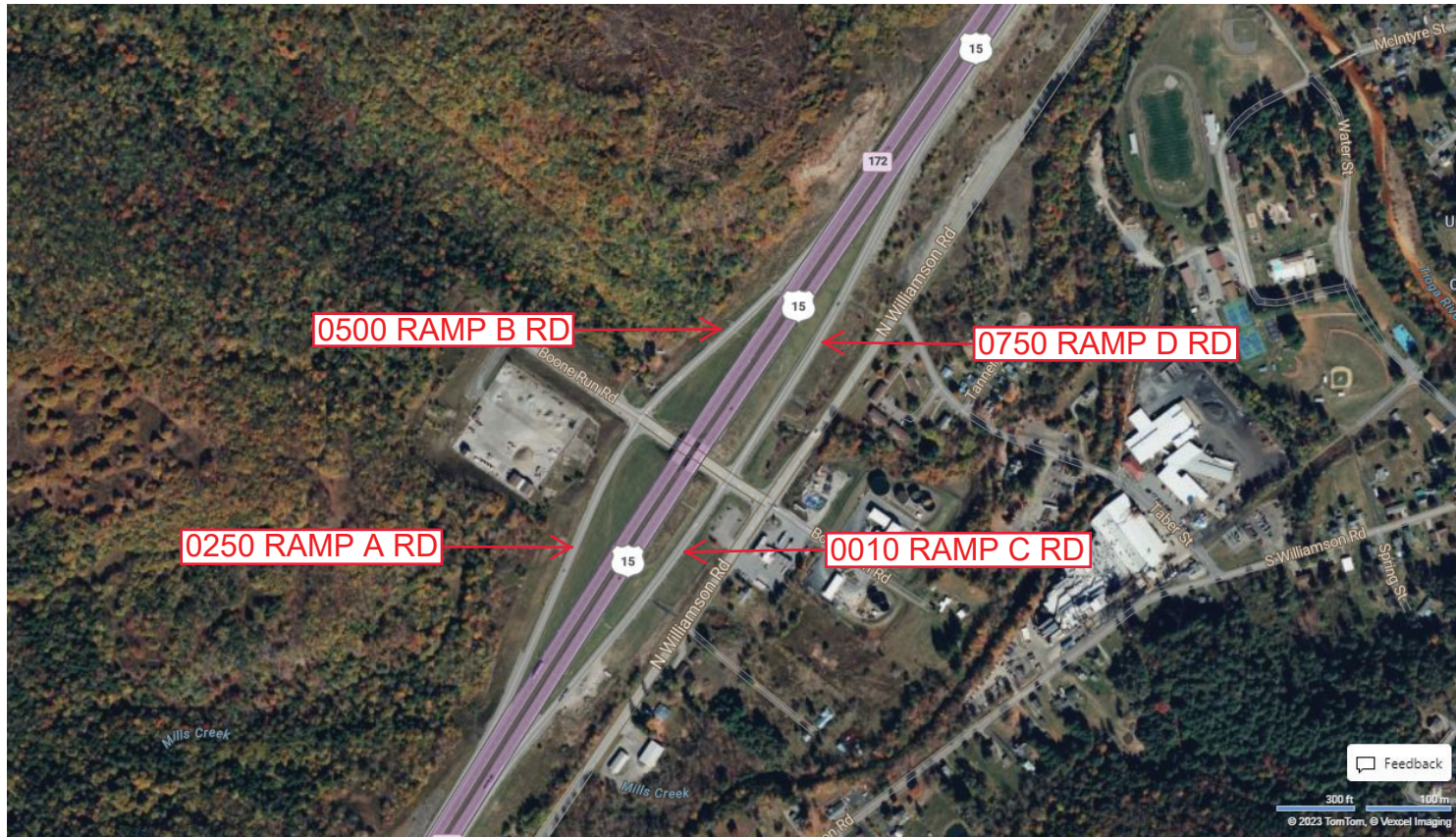
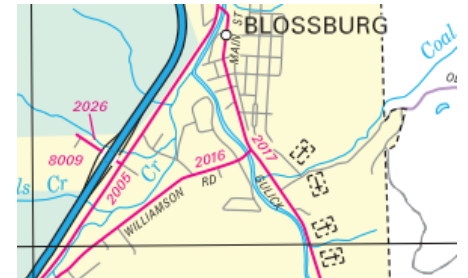
Ramp Segment Number and Ramp Segment Length Information:

Segment	Length	Segment	Length	Segment	Length	Segment	Length
0010	1218						
0250	1200						
0500	0764						
0750	1404						

Primary Route Interchange Exit Number: 172

Secondary Route Interchange Exit Number

PennDOT Type 10 Map View:



Last Date Modified:

Apr 26, 2023

County: 58

RMS Interchange Information

Print Form

Interchange Number: 8011

Bureau of Maintenance & Operations
Asset Management Division



Interchange Name: MAIN ST INT

Intersecting SR's: US 15, PA 660 Cowan Rd & 2005 Main St (Bus15)

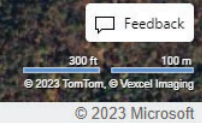
Ramp Segment Number and Ramp Segment Length Information:

Segment	Length	Segment	Length	Segment	Length	Segment	Length
0010	2024						
0020	1696						
0250	1068						
0500	0916						

Primary Route Interchange Exit Number

Secondary Route Interchange Exit Number

PennDOT Type 10 Map View:



Last Date Modified:

Apr 26, 2023

County: 58

RMS Interchange Information

Print Form

Interchange Number: 8013

Bureau of Maintenance & Operations
Asset Management Division



Interchange Name: LAWRENCEVILLE INT

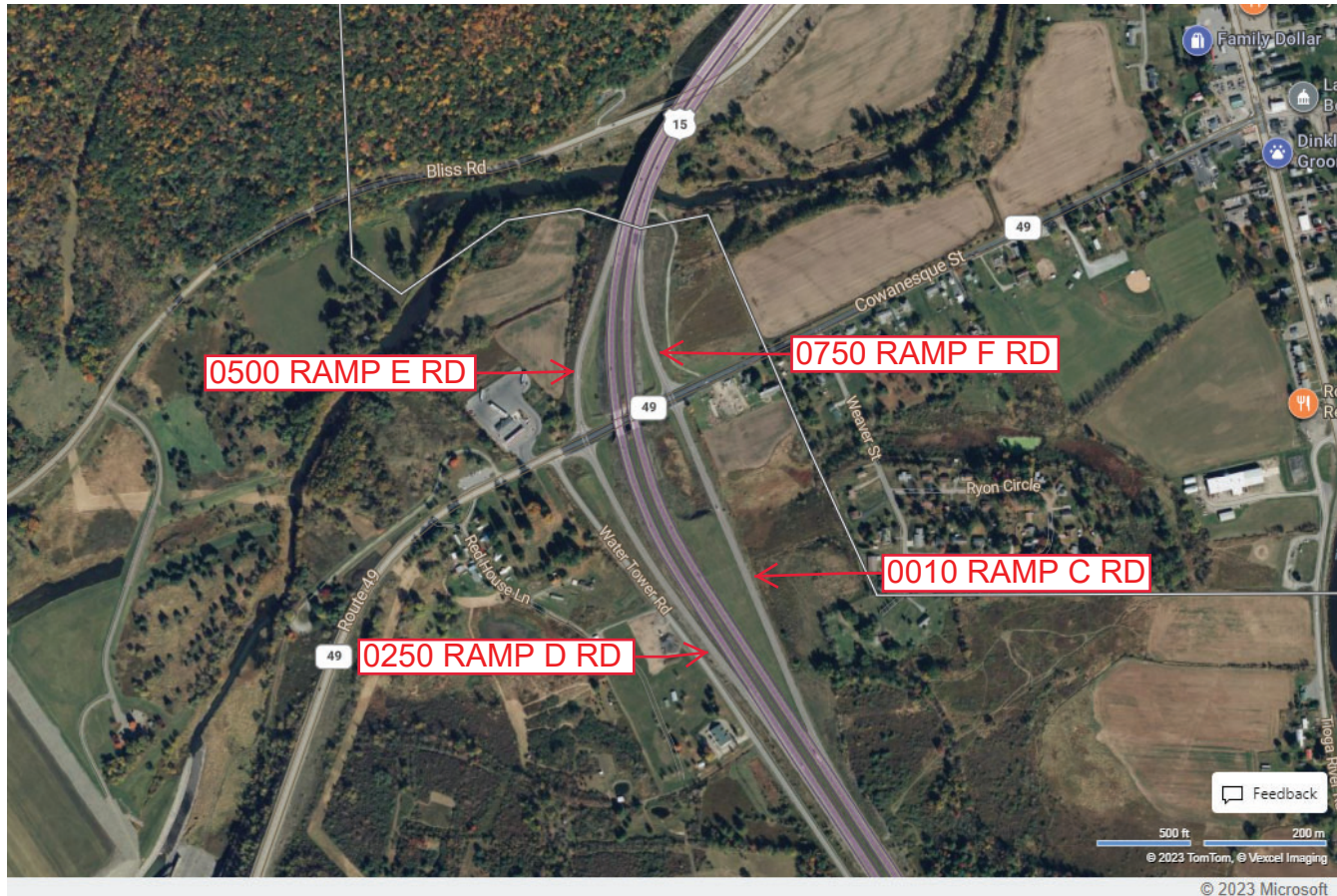
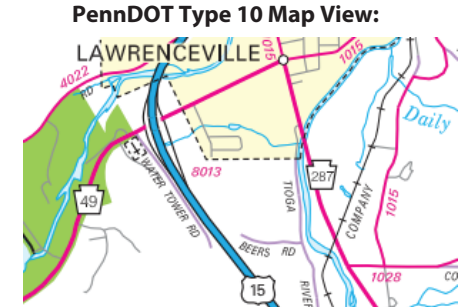
Intersecting SR's: US 15 Marine Corps Leag Mem Hw & PA 49

Ramp Segment Number and Ramp Segment Length Information:

Segment	Length	Segment	Length	Segment	Length	Segment	Length
0010	2002						
0250	1641						
0500	1019						
0750	0752						

Primary Route Interchange Exit Number: 196

Secondary Route Interchange Exit Number



Last Date Modified: Apr 26, 2023

County: 58

RMS Interchange Information

Bureau of Maintenance & Operations
Asset Management Division

Print Form



Interchange Number: 9201

Interchange Name: ROADSIDE REST AREA

Intersecting SR's: US 15 Roadside Rest Area

Ramp Segment Number and Ramp Segment Length Information:

Segment	Length	Segment	Length	Segment	Length	Segment	Length
0010	1816						
0020	1055						

Primary Route Interchange Exit Number

Secondary Route Interchange Exit Number

PennDOT Type 10 Map View:



Last Date Modified: Apr 27, 2023

County: 58

RMS Interchange Information

Print Form

Interchange Number: 9202

Bureau of Maintenance & Operations
Asset Management Division



Interchange Name: US 6 ROADSIDE REST AREA

Intersecting SR's: US 6 & Roadside Rest Area

Ramp Segment Number and Ramp Segment Length Information:

Segment	Length	Segment	Length	Segment	Length	Segment	Length
0010	0390						

Primary Route Interchange Exit Number

Secondary Route Interchange Exit Number

PennDOT Type 10 Map View:



Last Date Modified:

Apr 27, 2023