

County: 59

# RMS Interchange Information

Print Form

Interchange Number: 8001

Bureau of Maintenance & Operations  
Asset Management Division



Interchange Name: MILTON & WEST MILTON INT

Intersecting SR's: US 6 15 Marine Corps Leag Mem Hw & SR 1004 Broad St

Ramp Segment Number and Ramp Segment Length Information:

Segment	Length	Segment	Length	Segment	Length	Segment	Length
0250	1600						
0260	1490						

Primary Route  
Interchange Exit  
Number

Secondary Route  
Interchange Exit  
Number

PennDOT Type 10 Map View:

Align top of image to just slightly  
cover the top of the dashed line

Paste Type 10 Image Here  
(Map needs to cover  
dashed area)



Last Date Modified:

Apr 27, 2023

County: 59

# RMS Interchange Information

Print Form

Interchange Number: 8002

Bureau of Maintenance & Operations  
Asset Management Division



Interchange Name: MILE RUN INT

Intersecting SR's: I-80 Z H Confair Mem Hw & SR 4001 Mile Run Rd

Ramp Segment Number and Ramp Segment Length Information:

Segment	Length	Segment	Length	Segment	Length	Segment	Length
0010	1052						
0250	0751						
0500	0693						
0750	0749						

Primary Route Interchange Exit Number: 199

Secondary Route Interchange Exit Number:

PennDOT Type 10 Map View:



Feedback

200 ft 50 m  
© 2023 TomTom, © Vexcel Imaging

© 2023 Microsoft

Last Date Modified: Apr 27, 2023

County: 59

# RMS Interchange Information

Print Form

Interchange Number: 8003

Bureau of Maintenance & Operations  
Asset Management Division



Interchange Name: US 15/PA 147

Intersecting SR's: US 15 & PA 147, SR 8015

Ramp Segment Number and Ramp Segment Length Information:

Segment	Length	Segment	Length	Segment	Length	Segment	Length
0010	1671						
0020	1403						
0250	0753						
0750	1495						

Primary Route Interchange Exit Number

Secondary Route Interchange Exit Number

PennDOT Type 10 Map View:



Last Date Modified: Apr 22, 2024

County: 59

# RMS Interchange Information

Print Form

Interchange Number: 8004

Bureau of Maintenance & Operations  
Asset Management Division



Interchange Name: LEWISBURG INT

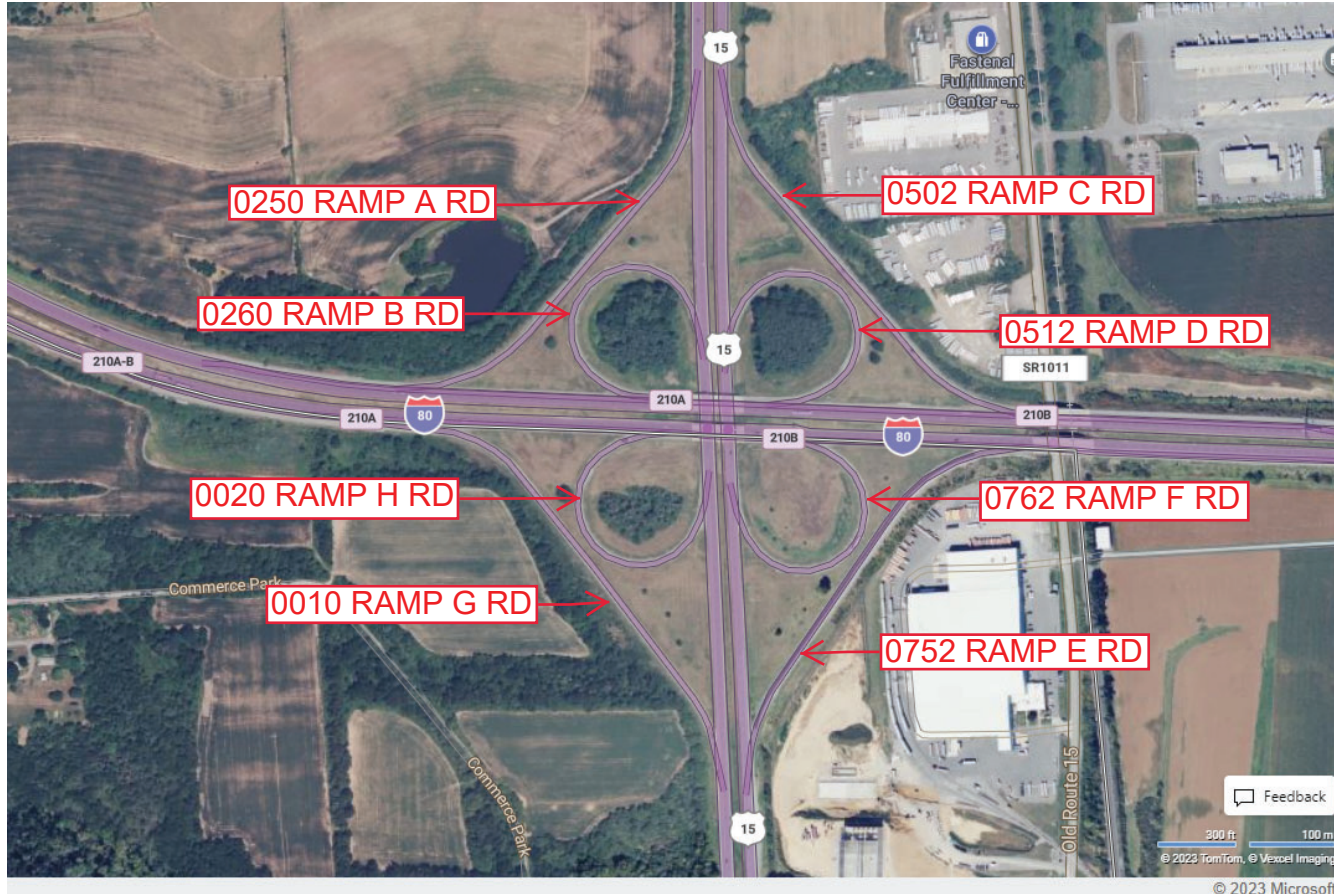
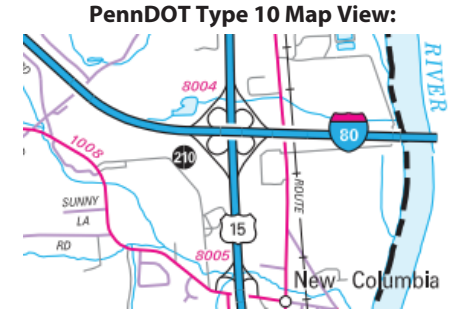
Intersecting SR's: I-80 & US 15 Marine Corps Leag Mem Hw

Ramp Segment Number and Ramp Segment Length Information:

Segment	Length	Segment	Length	Segment	Length	Segment	Length
0010	1514	0512	1067				
0020	1033	0752	1377				
0250	1390	0762	0966				
0260	0995						
0502	1451						

Primary Route Interchange Exit Number: 210A

Secondary Route Interchange Exit Number: 210B



Feedback  
300 ft 100 m  
© 2023 TomTom, © Vexxel Imaging  
© 2023 Microsoft

Last Date Modified:

Apr 28, 2023

County: 59

# RMS Interchange Information

Print Form

Interchange Number: 8005

Bureau of Maintenance & Operations  
Asset Management Division



Interchange Name: NEW COLUMBIA INT

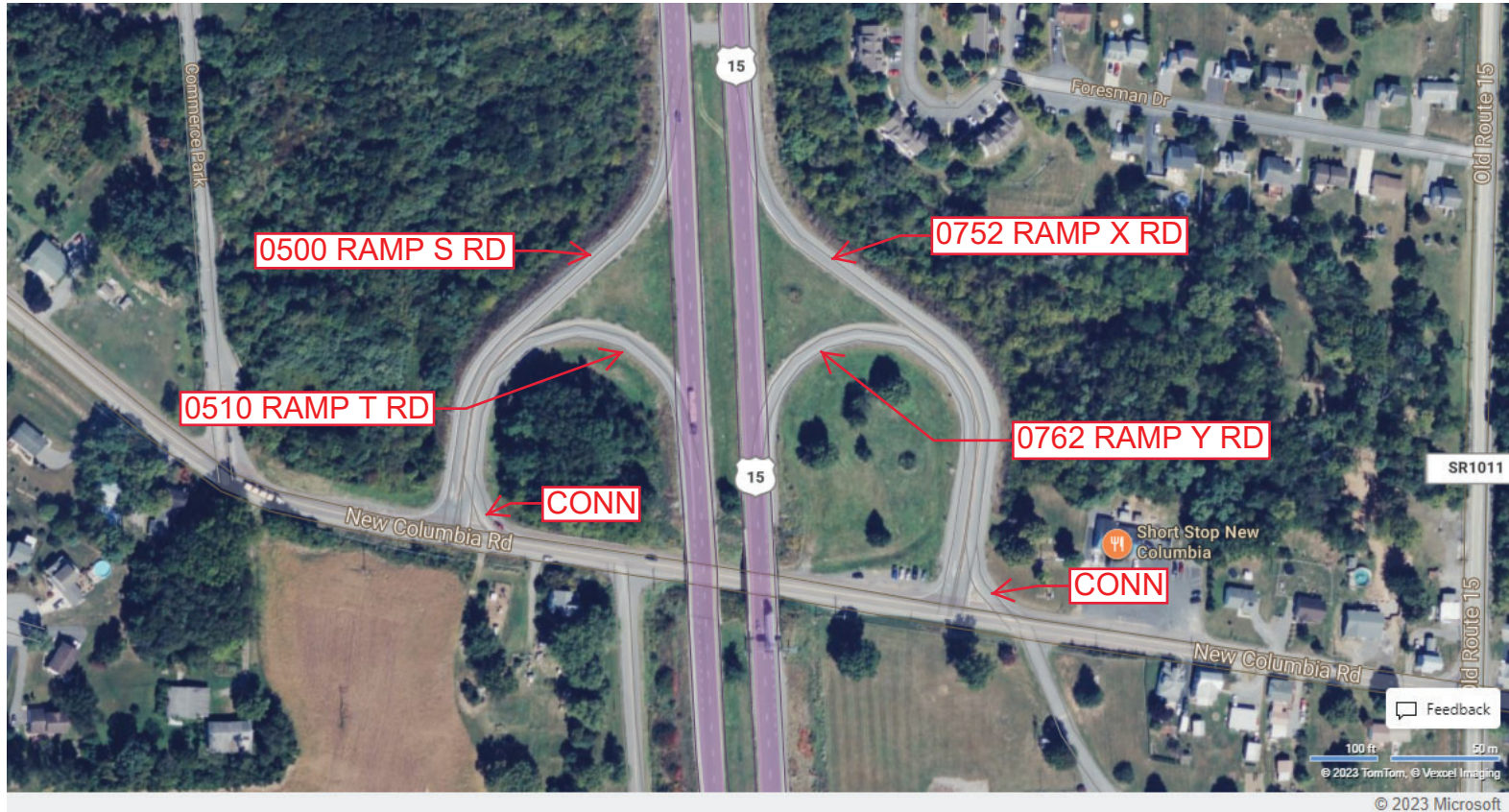
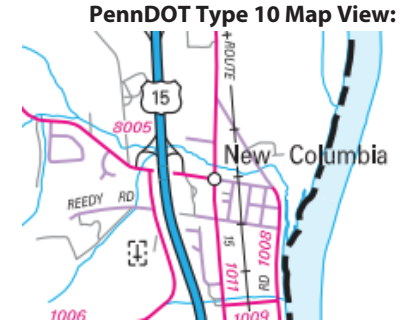
Intersecting SR's: US 15 & SR 1008 New Columbia Rd

Ramp Segment Number and Ramp Segment Length Information:

Segment	Length	Segment	Length	Segment	Length	Segment	Length
0500	0636						
0510	0555						
0752	0796						
0762	0671						

Primary Route Interchange Exit Number

Secondary Route Interchange Exit Number



Last Date Modified: Jan 7, 2025

County: 59

# RMS Interchange Information

Print Form

Interchange Number: 8007

Bureau of Maintenance & Operations  
Asset Management Division



Interchange Name: WHITE DEER INT

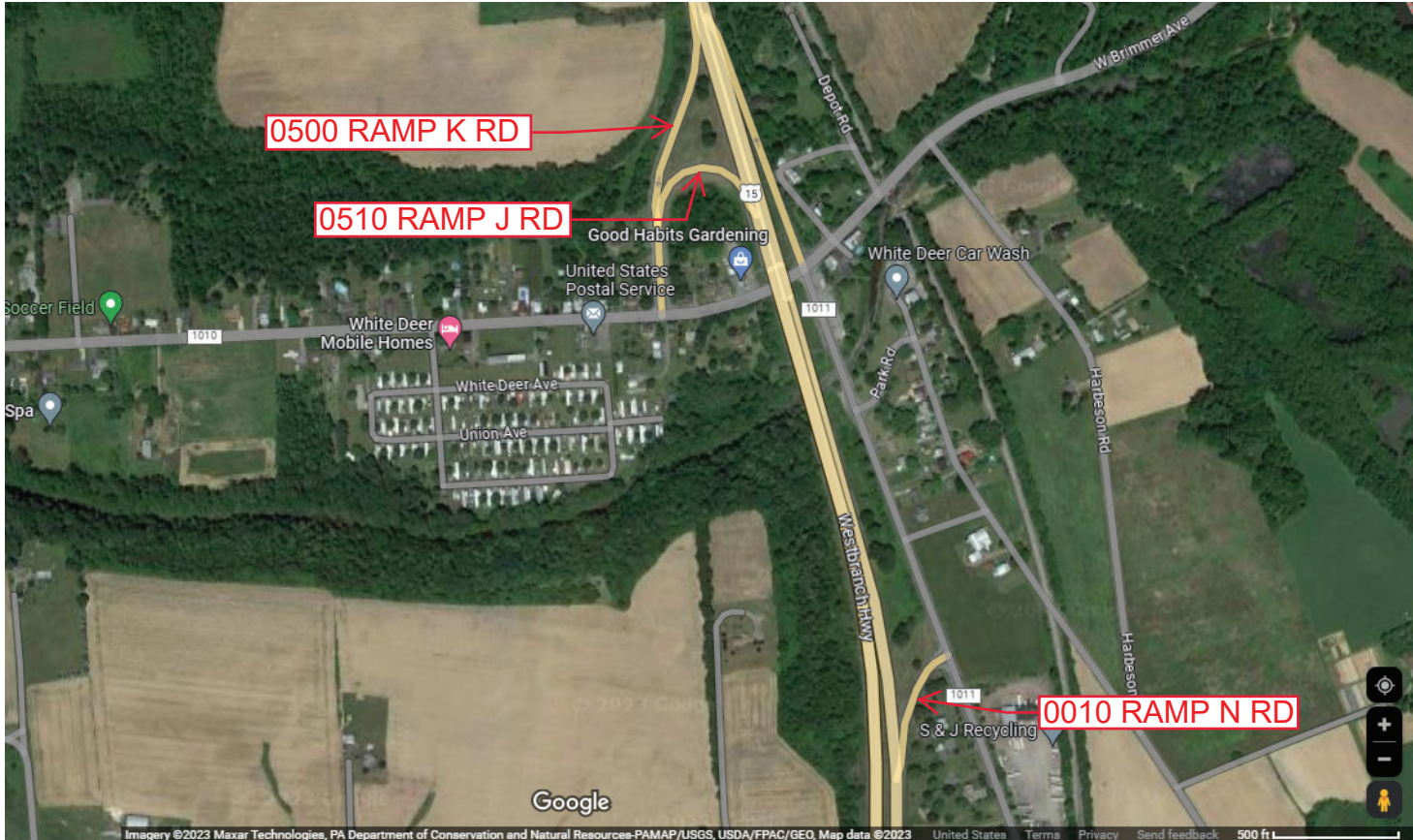
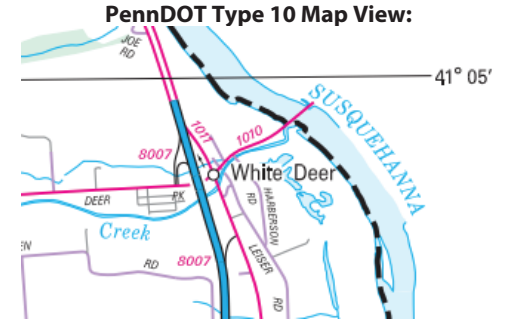
Intersecting SR's: US 15, SR 1010 White Deer Pk & SR 1011

Ramp Segment Number and Ramp Segment Length Information:

Segment	Length	Segment	Length	Segment	Length	Segment	Length
0010	0379						
0500	1110						
0510	0856						

Primary Route Interchange Exit Number

Secondary Route Interchange Exit Number



Last Date Modified: Apr 28, 2023

County: 59

# RMS Interchange Information

Bureau of Maintenance & Operations  
Asset Management Division

Print Form



Interchange Number: 9401

Interchange Name: US 15

Intersecting SR's: US 15 & SR 1011 Old Route 15 Rd

Ramp Segment Number and Ramp Segment Length Information:

Segment	Length	Segment	Length	Segment	Length	Segment	Length
0010	0378						

Primary Route Interchange Exit Number

Secondary Route Interchange Exit Number

PennDOT Type 10 Map View:



Last Date Modified: May 1, 2023

County: 59

# RMS Interchange Information

Print Form

Interchange Number: 9402

Bureau of Maintenance & Operations  
Asset Management Division



Interchange Name: US 15

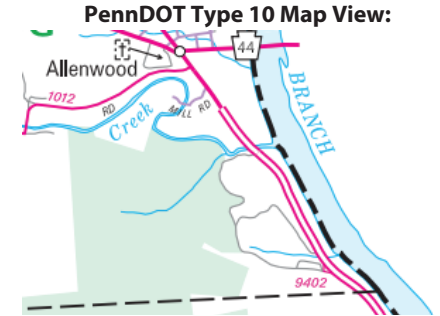
Intersecting SR's: US 15 Marine Corps League Mem Hw & Park Rd

Ramp Segment Number and Ramp Segment Length Information:

Segment	Length	Segment	Length	Segment	Length	Segment	Length
0010	0246						

Primary Route Interchange Exit Number

Secondary Route Interchange Exit Number



Last Date Modified: May 1, 2023