

County: 35

RMS Interchange Information

Print Form

Interchange Number: 8001

Bureau of Maintenance & Operations
Asset Management Division



Interchange Name: MOOSIC BOROUGH INT

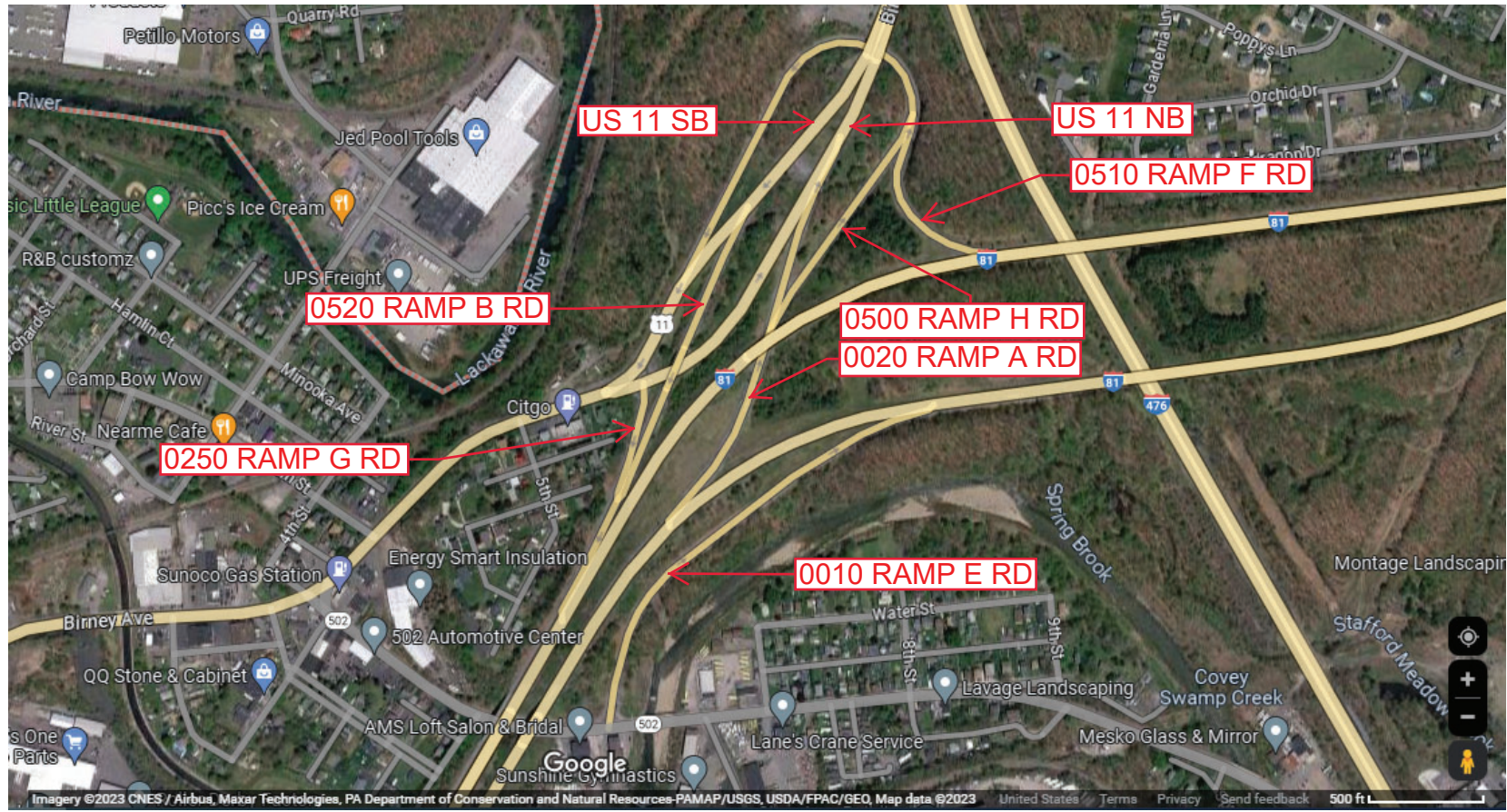
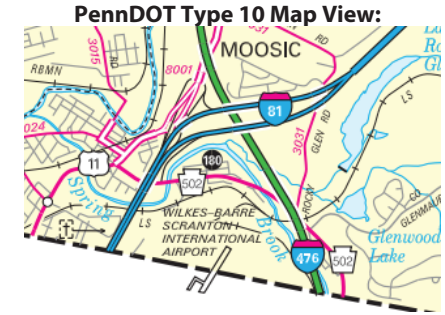
Intersecting SR's: I-81, US 11 Birney Av & PA 502 Spring brook Av

Ramp Segment Number and Ramp Segment Length Information:

Segment	Length	Segment	Length	Segment	Length	Segment	Length
0010	1971	0520	1429				
0020	1349						
0250	0289						
0500	0840						
0510	2476						

Primary Route Interchange Exit Number: 180

Secondary Route Interchange Exit Number



Last Date Modified: May 1, 2023

County: 35

RMS Interchange Information

Print Form

Interchange Number: 8002

Bureau of Maintenance & Operations
Asset Management Division



Interchange Name: TIGUE ST INT

Intersecting SR's: I-84, SR 2020 Drinker St, Dunham Dr & Tigue St

Ramp Segment Number and Ramp Segment Length Information:

Segment	Length	Segment	Length	Segment	Length	Segment	Length
0014	0523						
0500	1597						
0510	1233						
0750	0478						

Primary Route Interchange Exit Number: 1

Secondary Route Interchange Exit Number:

PennDOT Type 10 Map View:



Last Date Modified: May 1, 2023

County: 35

RMS Interchange Information

Print Form

Interchange Number: 8003

Bureau of Maintenance & Operations
Asset Management Division



Interchange Name: DAVIS ST INT

Intersecting SR's: I-81, SR 3016 Davis St, Montage Mountain Rd & Stafford Av

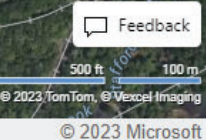
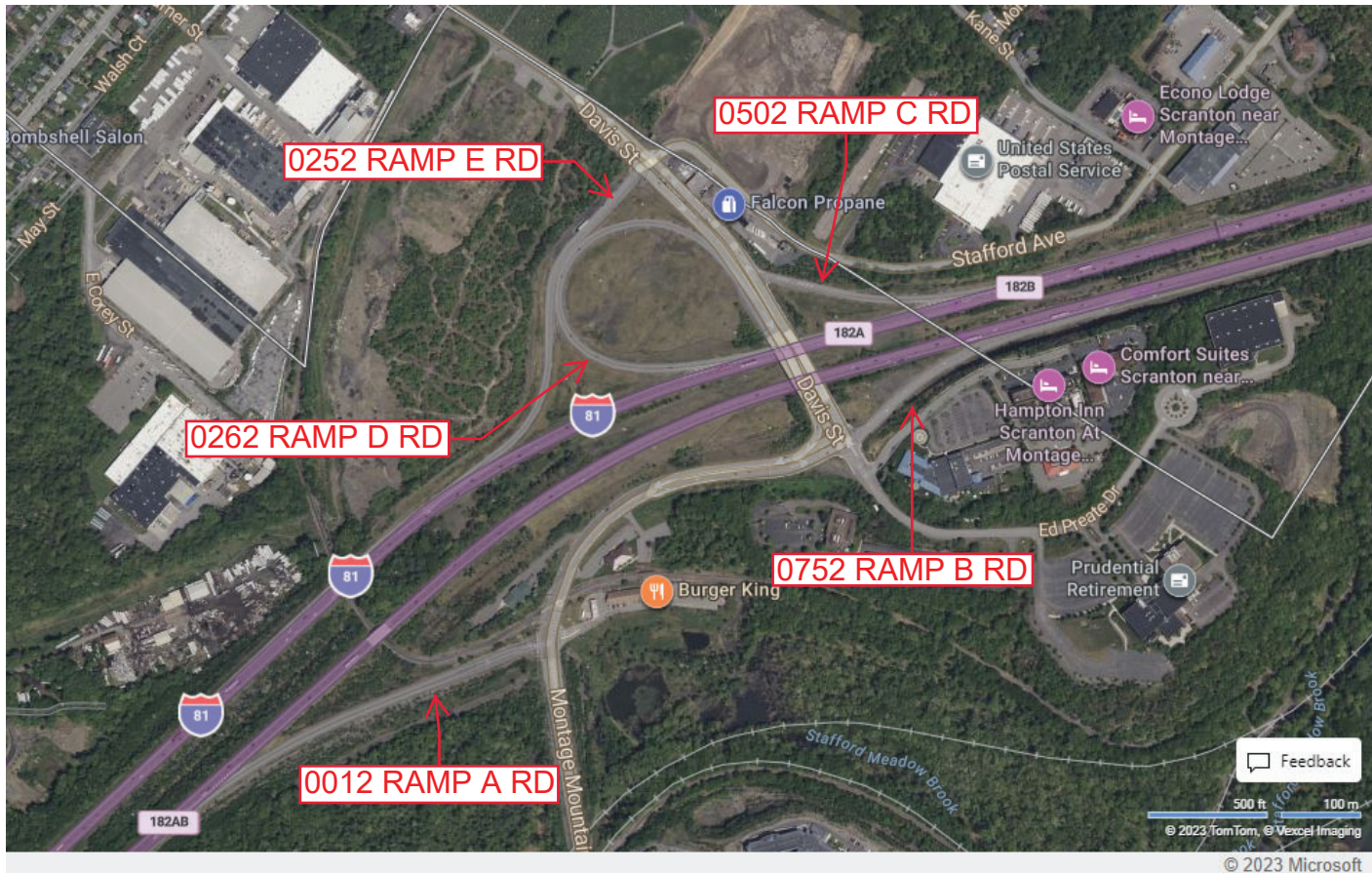
Ramp Segment Number and Ramp Segment Length Information:

Segment	Length	Segment	Length	Segment	Length	Segment	Length
0012	1423						
0252	1451						
0262	1523						
0502	0709						
0752	0676						

Primary Route Interchange Exit Number: 182A

Secondary Route Interchange Exit Number: 182B

PennDOT Type 10 Map View:



Last Date Modified: May 17, 2023

County: 35

RMS Interchange Information

Print Form

Interchange Number: 8005

Bureau of Maintenance & Operations
Asset Management Division



Interchange Name: CENTRAL SCRANTON EX INT

Intersecting SR's: I-81, PA 307 Moosic St & SR 3022 Central Scranton Ex

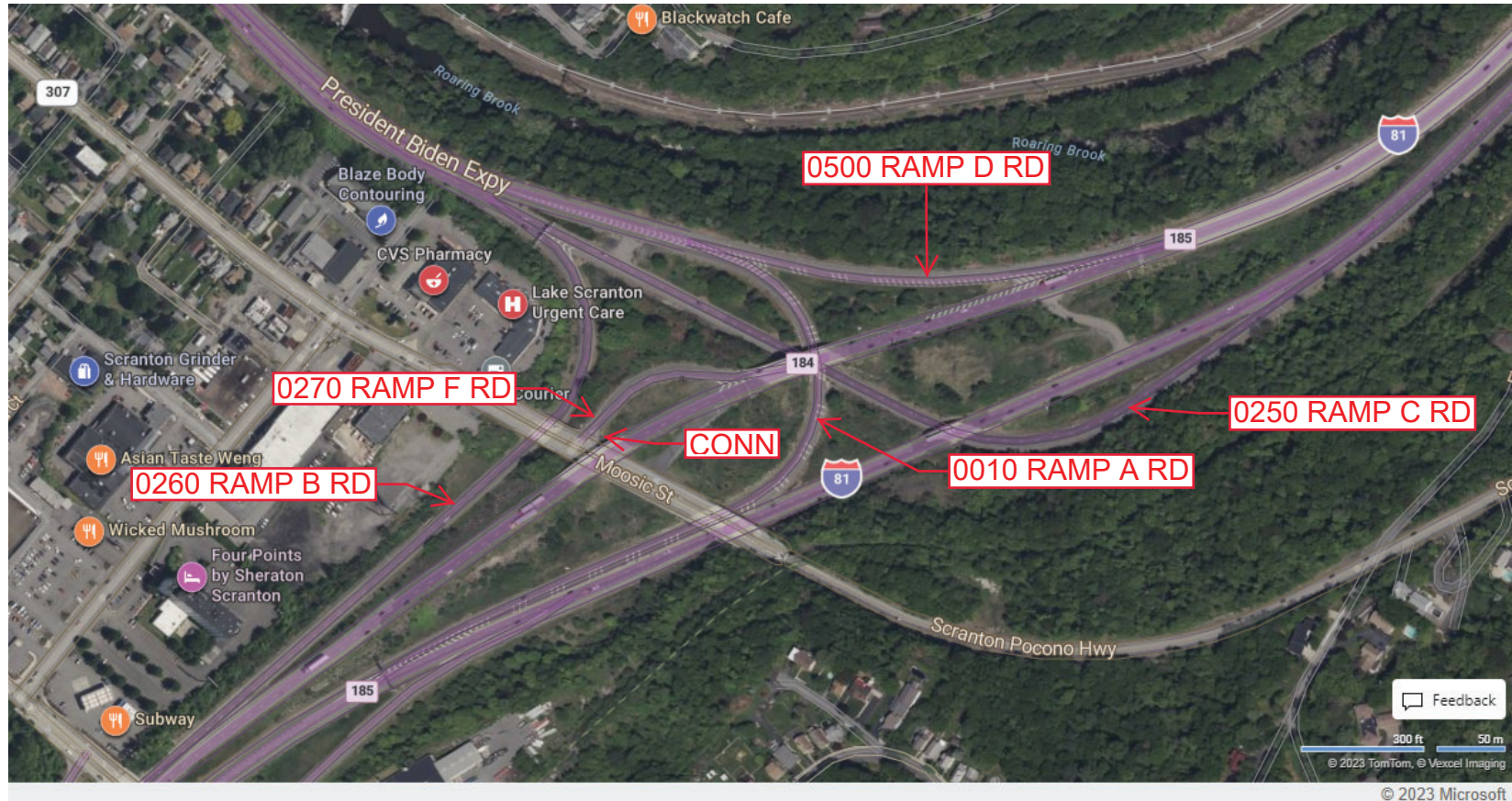
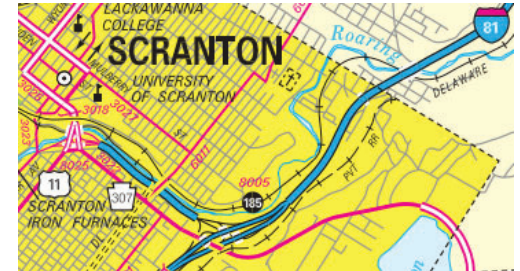
Ramp Segment Number and Ramp Segment Length Information:

Segment	Length	Segment	Length	Segment	Length	Segment	Length
0010	1402						
0250	1846						
0260	1421						
0270	0410						
0500	0598						

Primary Route Interchange Exit Number: 185

Secondary Route Interchange Exit Number

PennDOT Type 10 Map View:



Last Date Modified:

May 17, 2023

County: 35

RMS Interchange Information

Print Form

Interchange Number: 8007

Bureau of Maintenance & Operations
Asset Management Division



Interchange Name: DRINKER ST INT

Intersecting SR's: SR 2020 Drinker St & SR 8024 Ramp Rd

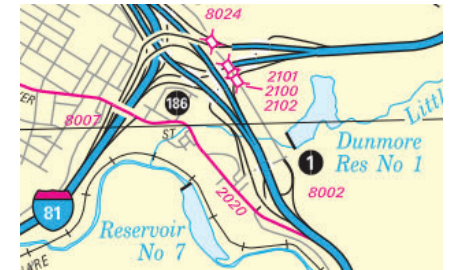
Ramp Segment Number and Ramp Segment Length Information:

Segment	Length	Segment	Length	Segment	Length	Segment	Length
0010	0596						
0250	0634						

Primary Route Interchange Exit Number: 186

Secondary Route Interchange Exit Number

PennDOT Type 10 Map View:



Last Date Modified: May 17, 2023

County: 35

RMS Interchange Information

Print Form

Interchange Number: 8008

Bureau of Maintenance & Operations
Asset Management Division



Interchange Name: I-84 SH

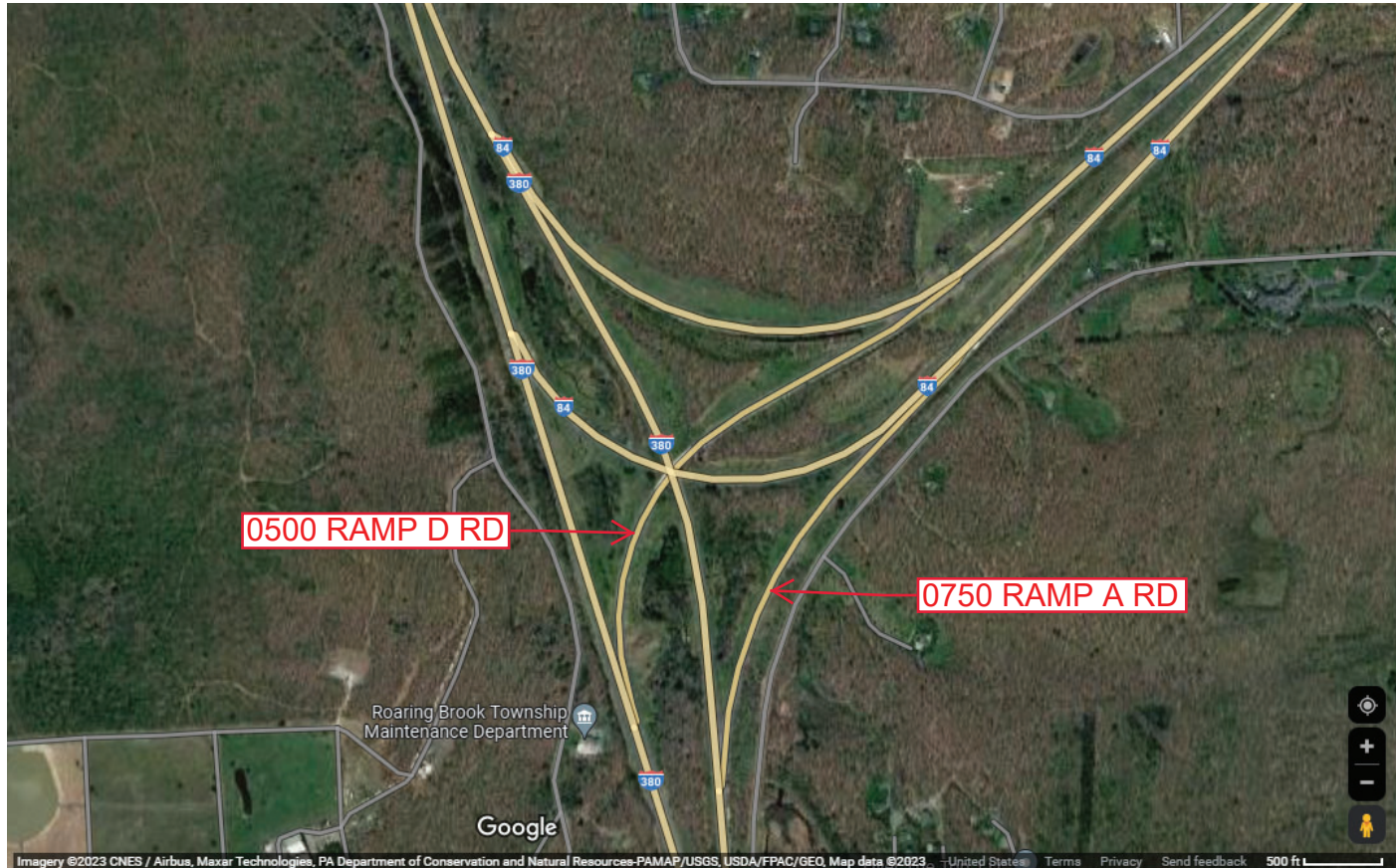
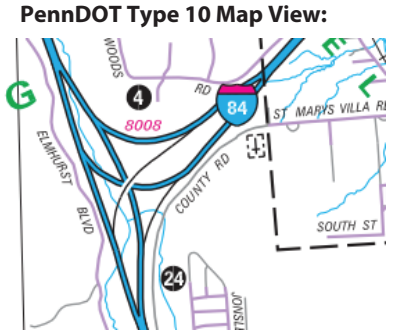
Intersecting SR's: I-84 & PA 380

Ramp Segment Number and Ramp Segment Length Information:

Segment	Length	Segment	Length	Segment	Length	Segment	Length
0500	3256						
0750	2346						

Primary Route Interchange Exit Number: 4

Secondary Route Interchange Exit Number: 24



Imagery ©2023 CNES / Airbus, Maxar Technologies, PA Department of Conservation and Natural Resources-PAMAP/USGS, USDA/FPAC/Geo, Map data ©2023, United States, Terms, Privacy, Send feedback, 500 ft

Last Date Modified: May 17, 2023

County: 35

RMS Interchange Information

Print Form

Interchange Number: 8009

Bureau of Maintenance & Operations
Asset Management Division



Interchange Name: BLAKELY ST INT

Intersecting SR's: I-81, I-84 & PA 347 O'Neill Hw

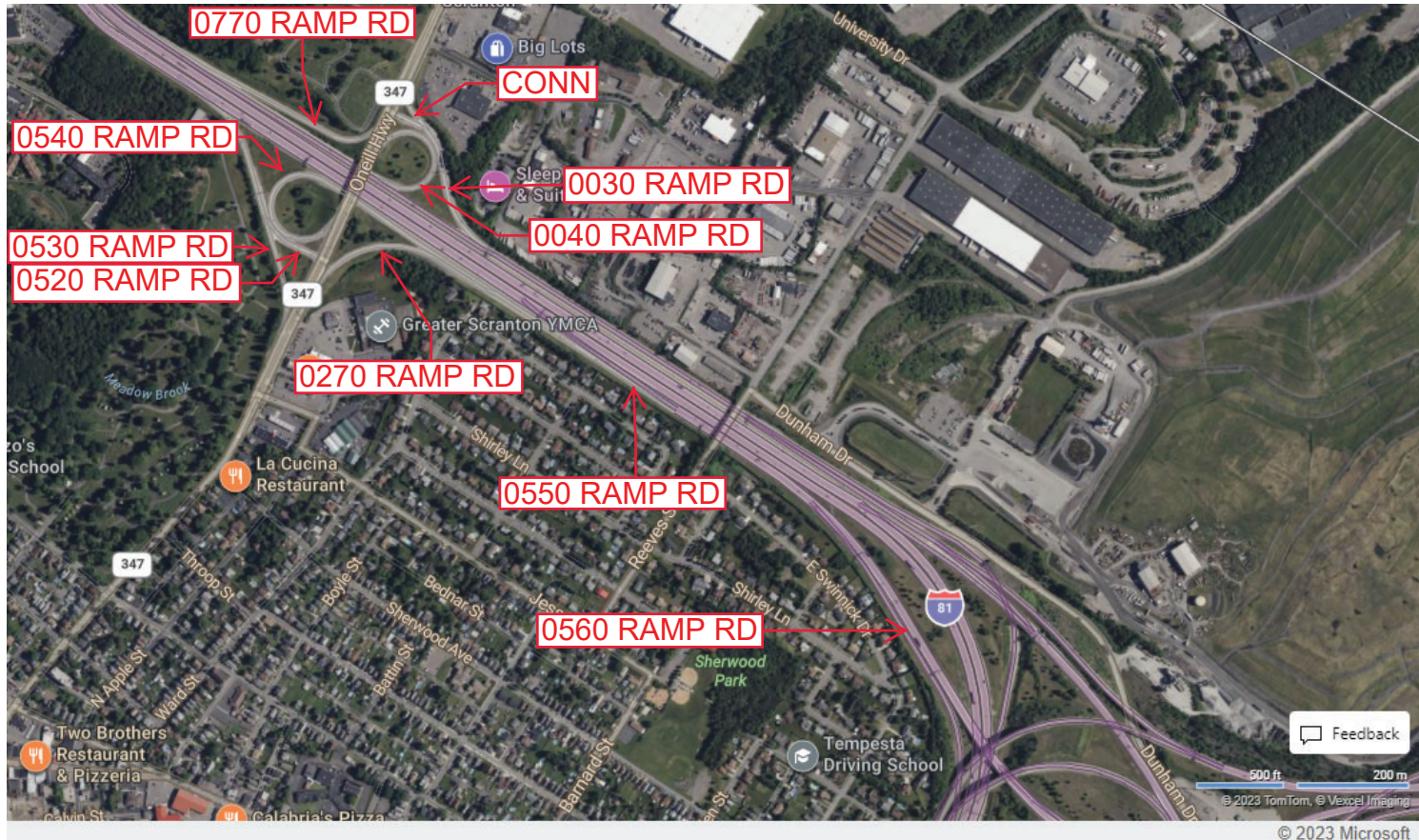
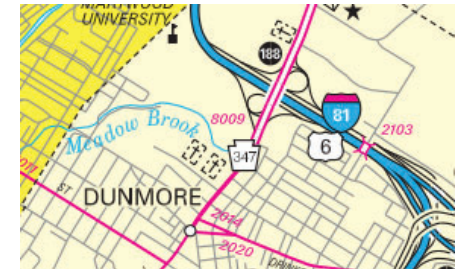
Ramp Segment Number and Ramp Segment Length Information:

Segment	Length	Segment	Length	Segment	Length	Segment	Length
0030	0847	0540	2322				
0040	0681	0550	1299				
0270	0567	0560	1421				
0520	1019	0770	1085				
0530	0431						

Primary Route Interchange Exit Number: 188

Secondary Route Interchange Exit Number

PennDOT Type 10 Map View:



County: 35

RMS Interchange Information

Print Form

Interchange Number: 8011

Bureau of Maintenance & Operations
Asset Management Division



Interchange Name: MAIN ST INT

Intersecting SR's: I-81, Main St & Viewmont Dr

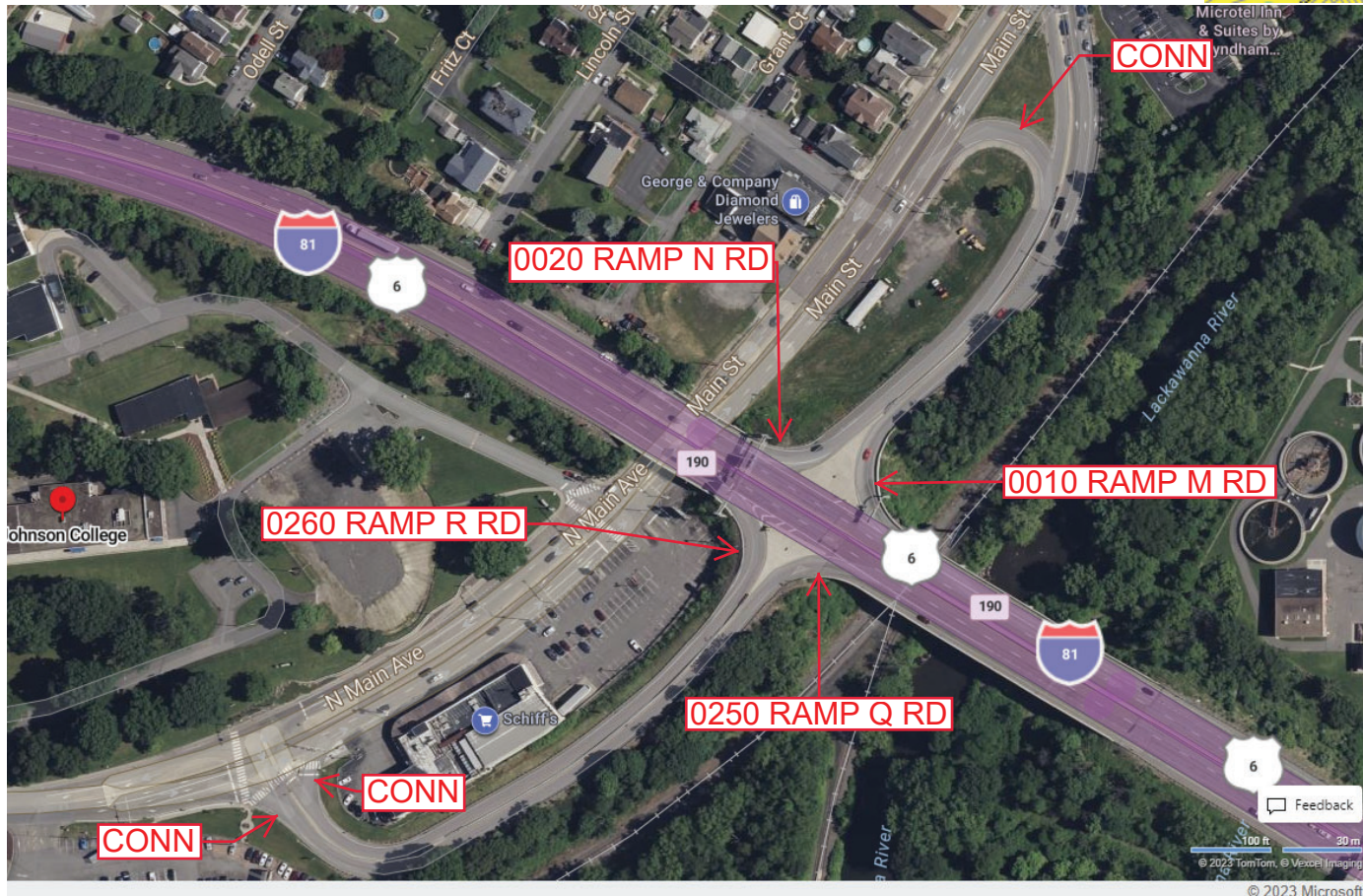
Ramp Segment Number and Ramp Segment Length Information:

Segment	Length	Segment	Length	Segment	Length	Segment	Length
0010	0772						
0020	0737						
0250	0896						
0260	0830						

Primary Route Interchange Exit Number: 190

Secondary Route Interchange Exit Number

PennDOT Type 10 Map View:



Last Date Modified:

May 18, 2023

County: 35

RMS Interchange Information

Print Form

Interchange Number: 8013

Bureau of Maintenance & Operations
Asset Management Division



Interchange Name: BUSINESS ROUTE 6 INT

Intersecting SR's: I-81 & SR 6006 (Bus6) Scranton Carbondale Hw

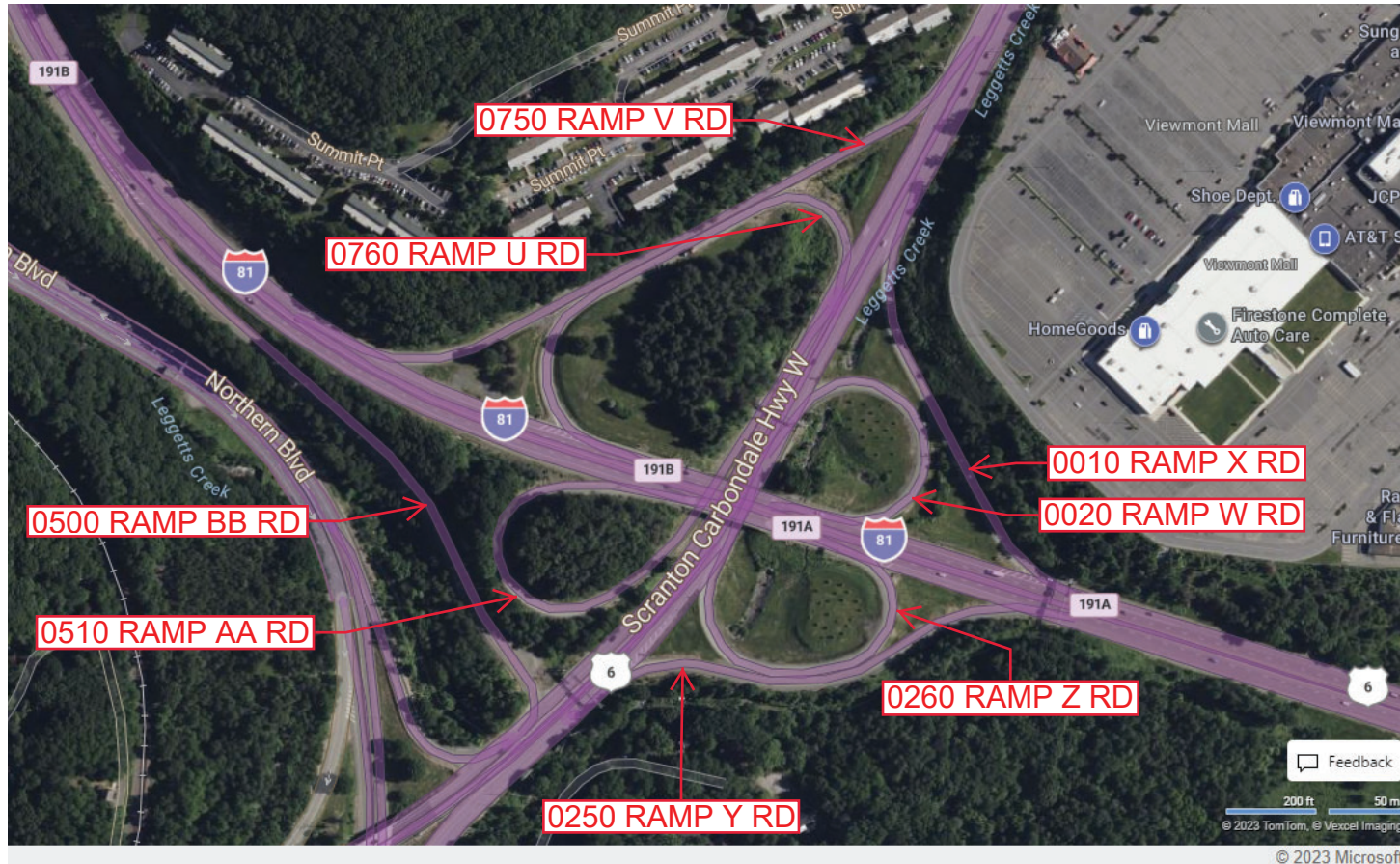
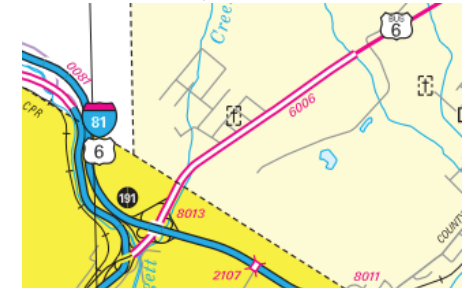
Ramp Segment Number and Ramp Segment Length Information:

Segment	Length	Segment	Length	Segment	Length	Segment	Length
0010	0755	0510	1198				
0020	0546	0750	1344				
0250	0862	0760	1028				
0260	0710						
0500	1508						

Primary Route Interchange Exit Number: 191A/191B

Secondary Route Interchange Exit Number

PennDOT Type 10 Map View:



Last Date Modified:

May 19, 2023

County: 35

RMS Interchange Information

Print Form

Bureau of Maintenance & Operations
Asset Management Division



Interchange Number: 8014

Interchange Name: PA 247 SH INT

Intersecting SR's: I-84 & PA 247 Moosic Lake Rd

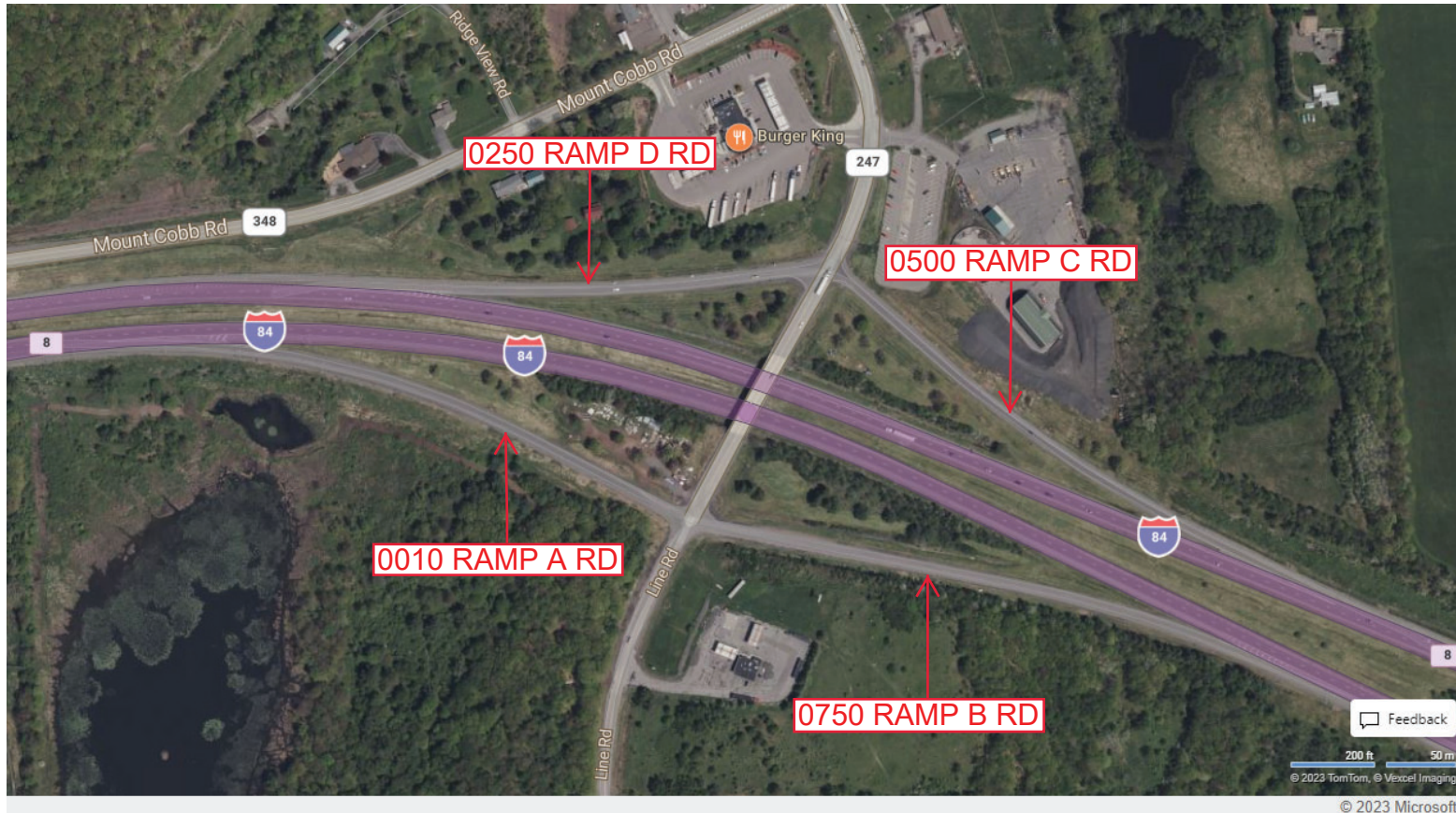
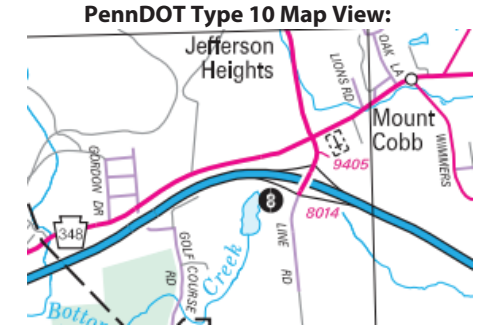
Ramp Segment Number and Ramp Segment Length Information:

Segment	Length	Segment	Length	Segment	Length	Segment	Length
0010	1194						
0250	0897						
0500	1159						
0750	1342						

Primary Route Interchange Exit Number

8

Secondary Route Interchange Exit Number



Last Date Modified:

May 23, 2023

County: 35

RMS Interchange Information

Print Form

Interchange Number: 8015

Bureau of Maintenance & Operations
Asset Management Division



Interchange Name: CLARK SUMMIT BOUROUGH INT

Intersecting SR's: I-81 & PA Turnpike

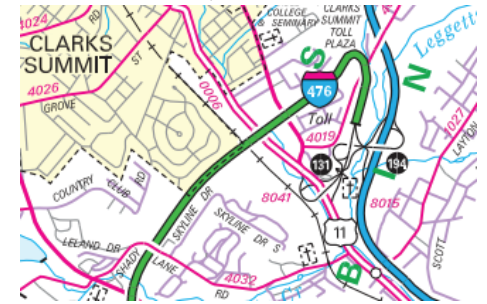
Ramp Segment Number and Ramp Segment Length Information:

Segment	Length	Segment	Length	Segment	Length	Segment	Length
0250	0410	0760	2666				
0260	0237						
0500	0434						
0510	0284						
0750	2535						

Primary Route Interchange Exit Number: 194

Secondary Route Interchange Exit Number: 131

PennDOT Type 10 Map View:



Last Date Modified:

May 23, 2023

County: 35

RMS Interchange Information

Print Form

Interchange Number: 8016

Bureau of Maintenance & Operations
Asset Management Division



Interchange Name: DALTON BOUROUGH INT

Intersecting SR's: US 6, PA 632, SR 4014 Main St & SR 4018 Bank St & Mill St

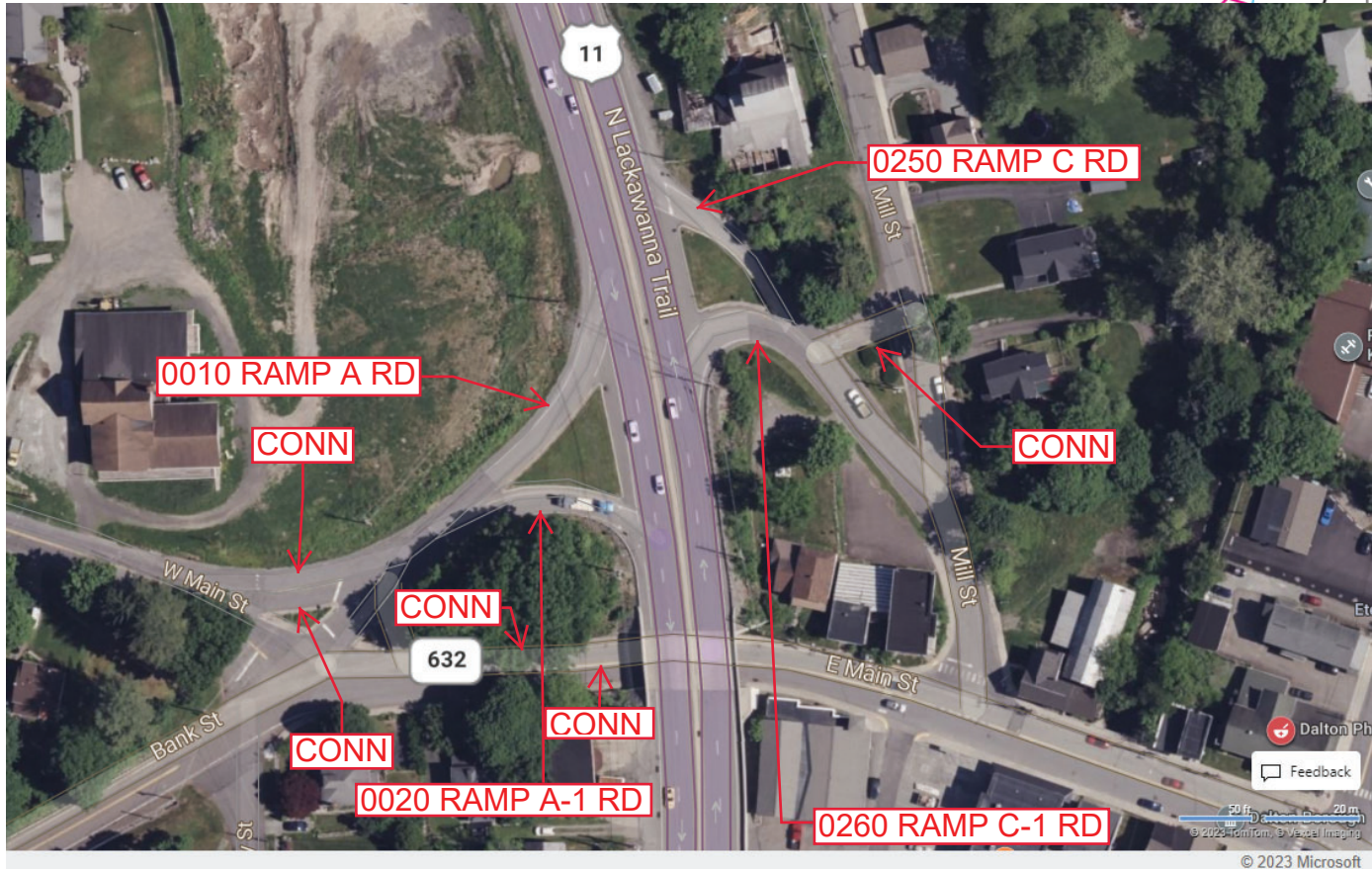
Ramp Segment Number and Ramp Segment Length Information:

Segment	Length	Segment	Length	Segment	Length	Segment	Length
0010	0298						
0020	0278						
0250	0427						
0260	0367						

Primary Route
Interchange Exit
Number

Secondary Route
Interchange Exit
Number

PennDOT Type 10 Map View:



Last Date Modified:

Jan 23, 2025

County: 35

RMS Interchange Information

Print Form

Interchange Number: 8017

Bureau of Maintenance & Operations
Asset Management Division



Interchange Name: WAVERLY BOUROUGH INT

Intersecting SR's: I-81 & PA 632 Carbondale Rd

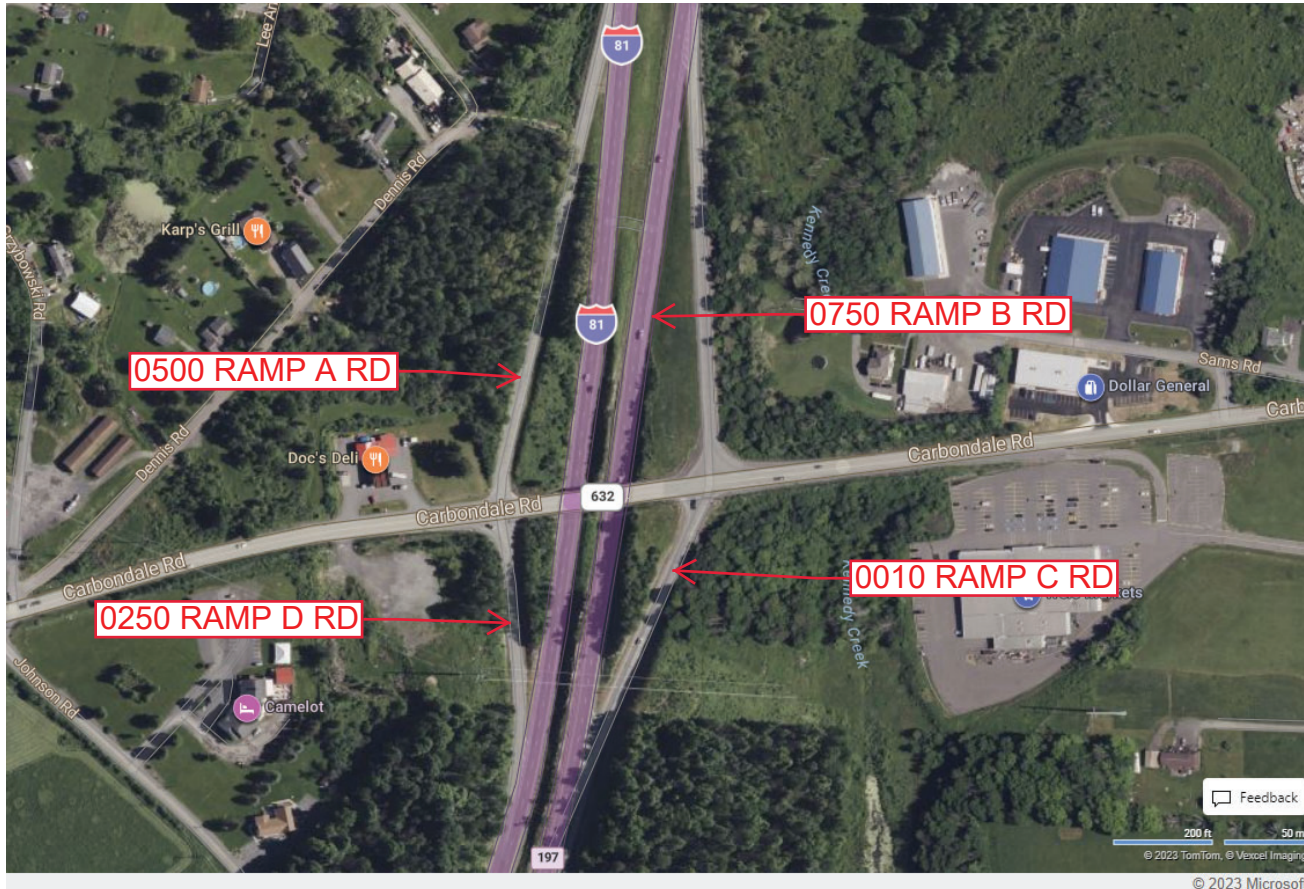
Ramp Segment Number and Ramp Segment Length Information:

Segment	Length	Segment	Length	Segment	Length	Segment	Length
0010	0509						
0025	0451						
0500	0957						
0750	0827						

Primary Route Interchange Exit Number: 197

Secondary Route Interchange Exit Number

PennDOT Type 10 Map View:



Feedback
200 ft 50 m
© 2023 TomTom, © Vexcel Imaging

Last Date Modified:

May 25, 2023

County: 35

RMS Interchange Information

Print Form

Interchange Number: 8019

Bureau of Maintenance & Operations
Asset Management Division



Interchange Name: SCOTT TOWNSHIP INT

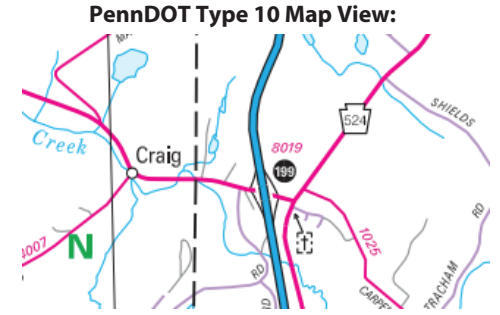
Intersecting SR's: I-81 & PA 524 Kennedy Creek Rd

Ramp Segment Number and Ramp Segment Length Information:

Segment	Length	Segment	Length	Segment	Length	Segment	Length
0010	0519						
0250	0804						
0500	0519						
0750	0587						

Primary Route Interchange Exit Number: 199

Secondary Route Interchange Exit Number



Last Date Modified: May 25, 2023

County: 35

RMS Interchange Information

Print Form

Interchange Number: 8020

Bureau of Maintenance & Operations
Asset Management Division



Interchange Name: MAYFIELD BOROUGH INT

Intersecting SR's: PA 107 & SR 6006 (Bus 6) Scranton-Carbondale Hw

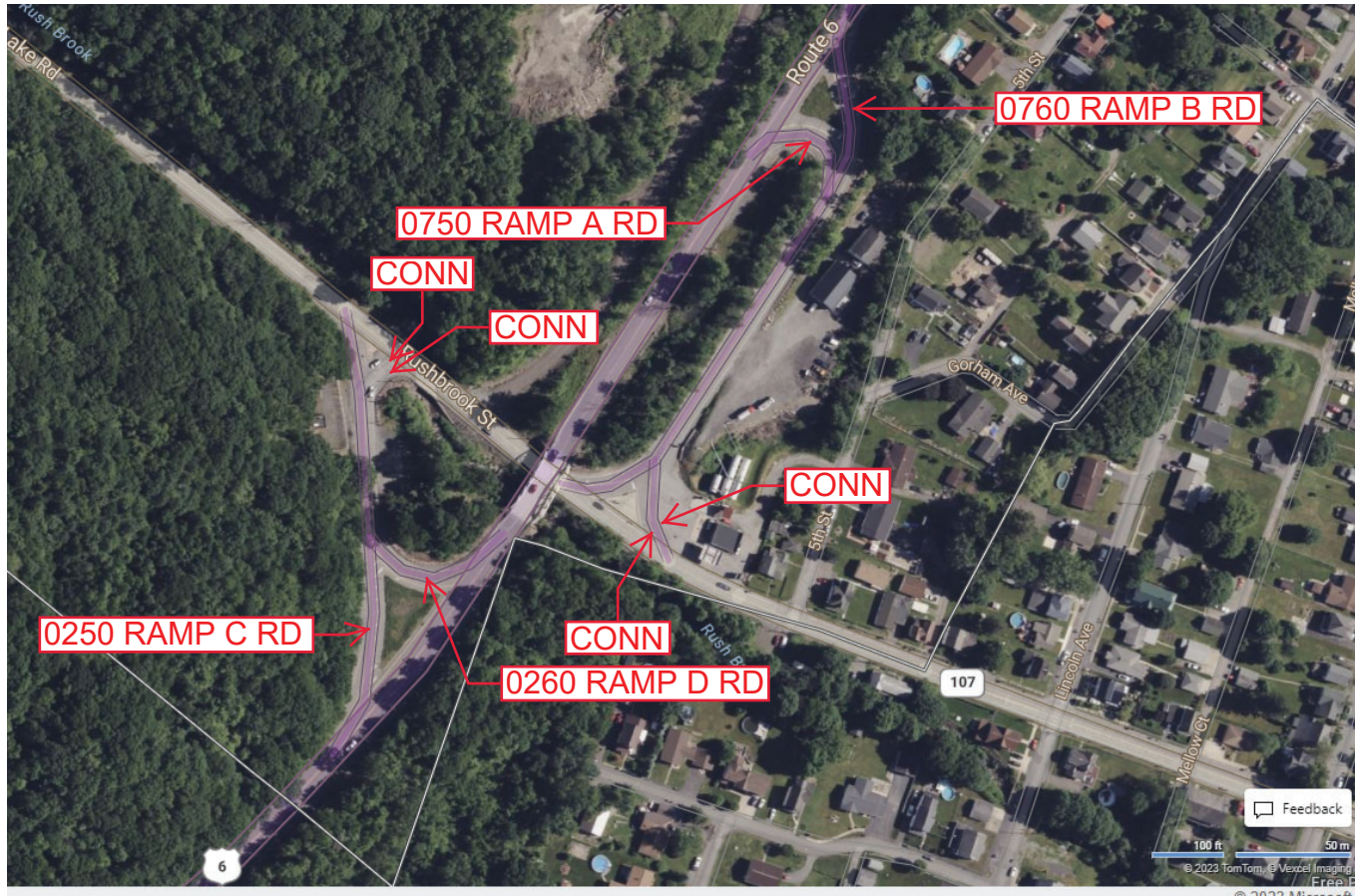
Ramp Segment Number and Ramp Segment Length Information:

Segment	Length	Segment	Length	Segment	Length	Segment	Length
0250	0471						
0260	0424						
0750	0678						
0760	0772						

Primary Route
Interchange Exit
Number

Secondary Route
Interchange Exit
Number

PennDOT Type 10 Map View:



Last Date Modified:

May 26, 2023

County: 35

RMS Interchange Information

Print Form

Interchange Number: 8021

Bureau of Maintenance & Operations
Asset Management Division



Interchange Name: EAST BENTON TOWNSHIP INT

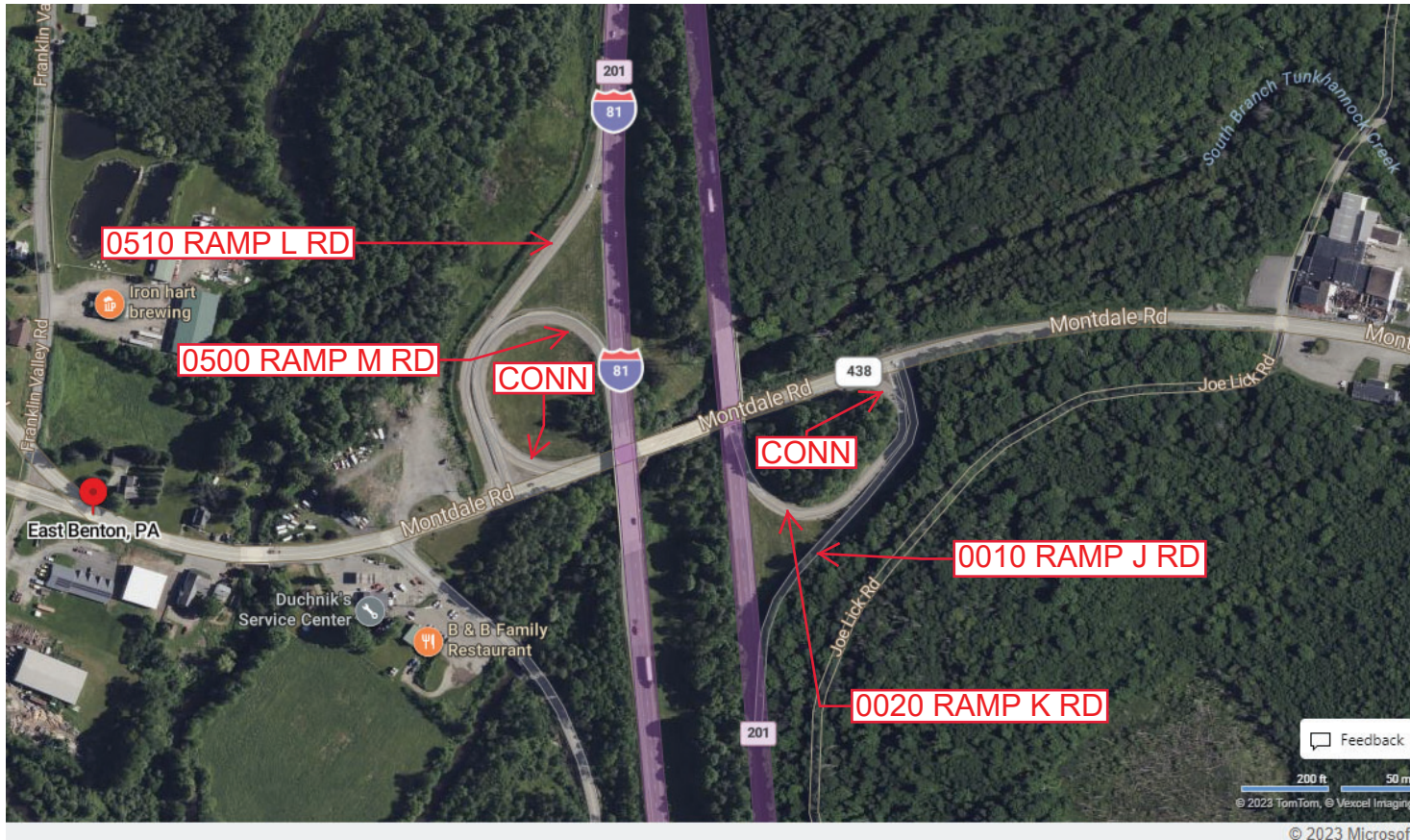
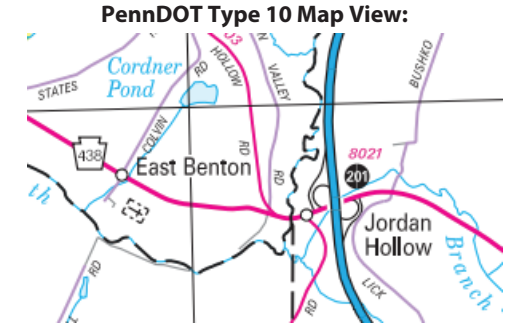
Intersecting SR's: I-81 & PA 438 Wallsville Rd

Ramp Segment Number and Ramp Segment Length Information:

Segment	Length	Segment	Length	Segment	Length	Segment	Length
0010	0752						
0020	0593						
0500	0650						
0510	0836						

Primary Route Interchange Exit Number: 201

Secondary Route Interchange Exit Number



Last Date Modified: May 31, 2023

County: 35

RMS Interchange Information

Print Form

Interchange Number: 8022

Bureau of Maintenance & Operations
Asset Management Division



Interchange Name: ROARING BROOK TWP INT

Intersecting SR's: PA 435 Drinker St & PA 348 Mt Cobb Rd

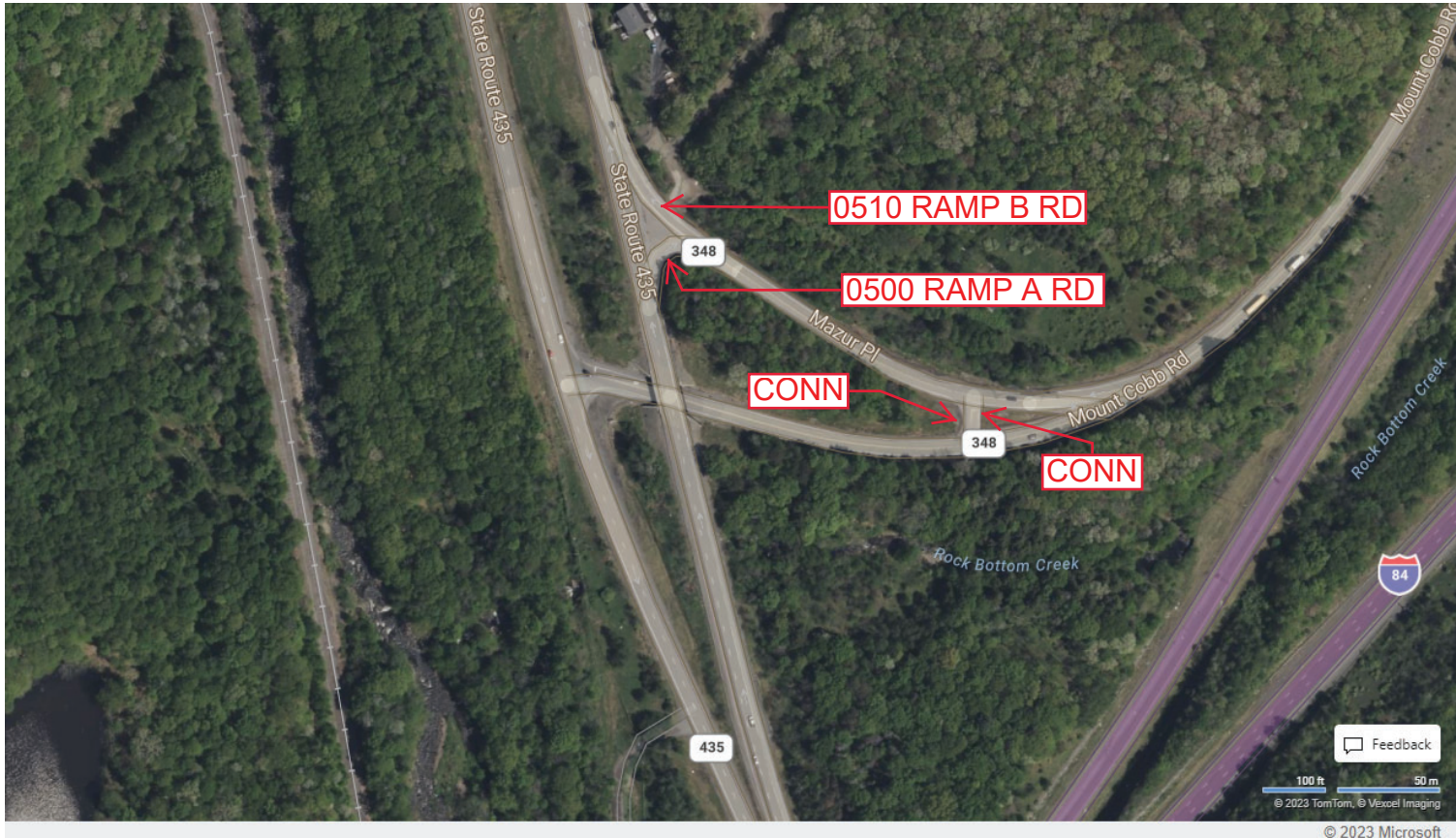
Ramp Segment Number and Ramp Segment Length Information:

Segment	Length	Segment	Length	Segment	Length	Segment	Length
0500	0770						
0510	0857						

Primary Route Interchange Exit Number

Secondary Route Interchange Exit Number

PennDOT Type 10 Map View:



Feedback
100 ft 50 m
© 2023 TomTom, © Vexcel Imaging
© 2023 Microsoft

Last Date Modified: May 31, 2023

County: 35

RMS Interchange Information

Print Form

Interchange Number: 8023

Bureau of Maintenance & Operations
Asset Management Division



Interchange Name: TOMPKINSVILLE BORO INT

Intersecting SR's: I-80 & PA 107 Benton Rd

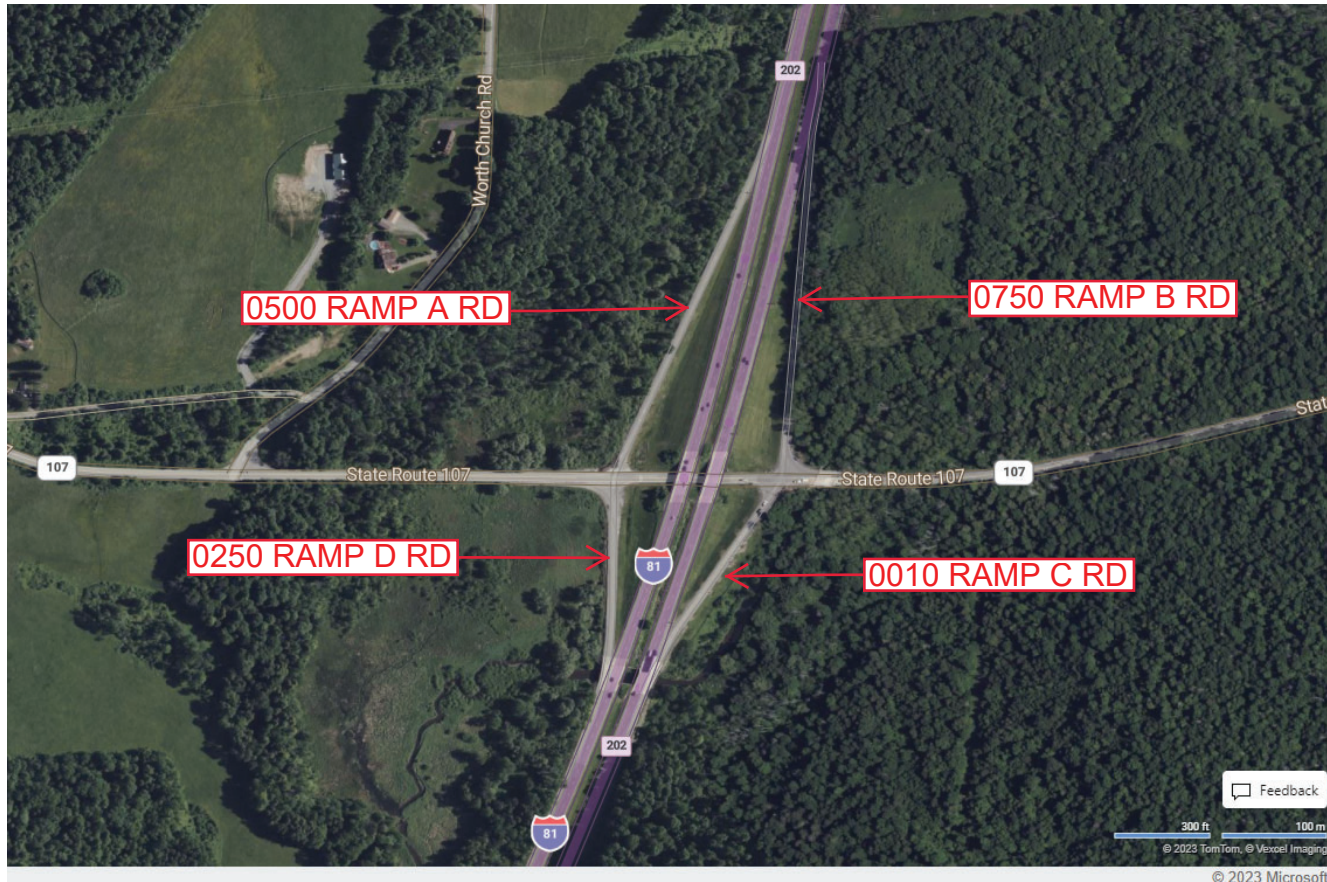
Ramp Segment Number and Ramp Segment Length Information:

Segment	Length	Segment	Length	Segment	Length	Segment	Length
0010	0596						
0250	0558						
0500	1040						
0750	1044						

Primary Route Interchange Exit Number: 202

Secondary Route Interchange Exit Number

PennDOT Type 10 Map View:



Feedback
300 ft 100 m
© 2023 TomTom, © Vexcel Imaging

Last Date Modified:

May 31, 2023

County: 35

RMS Interchange Information

Print Form

Interchange Number: 8024

Bureau of Maintenance & Operations
Asset Management Division



Interchange Name: I-81/I-84/US 6

Intersecting SR's: I-81, I-84 & US 6 Robert P Casey Hw

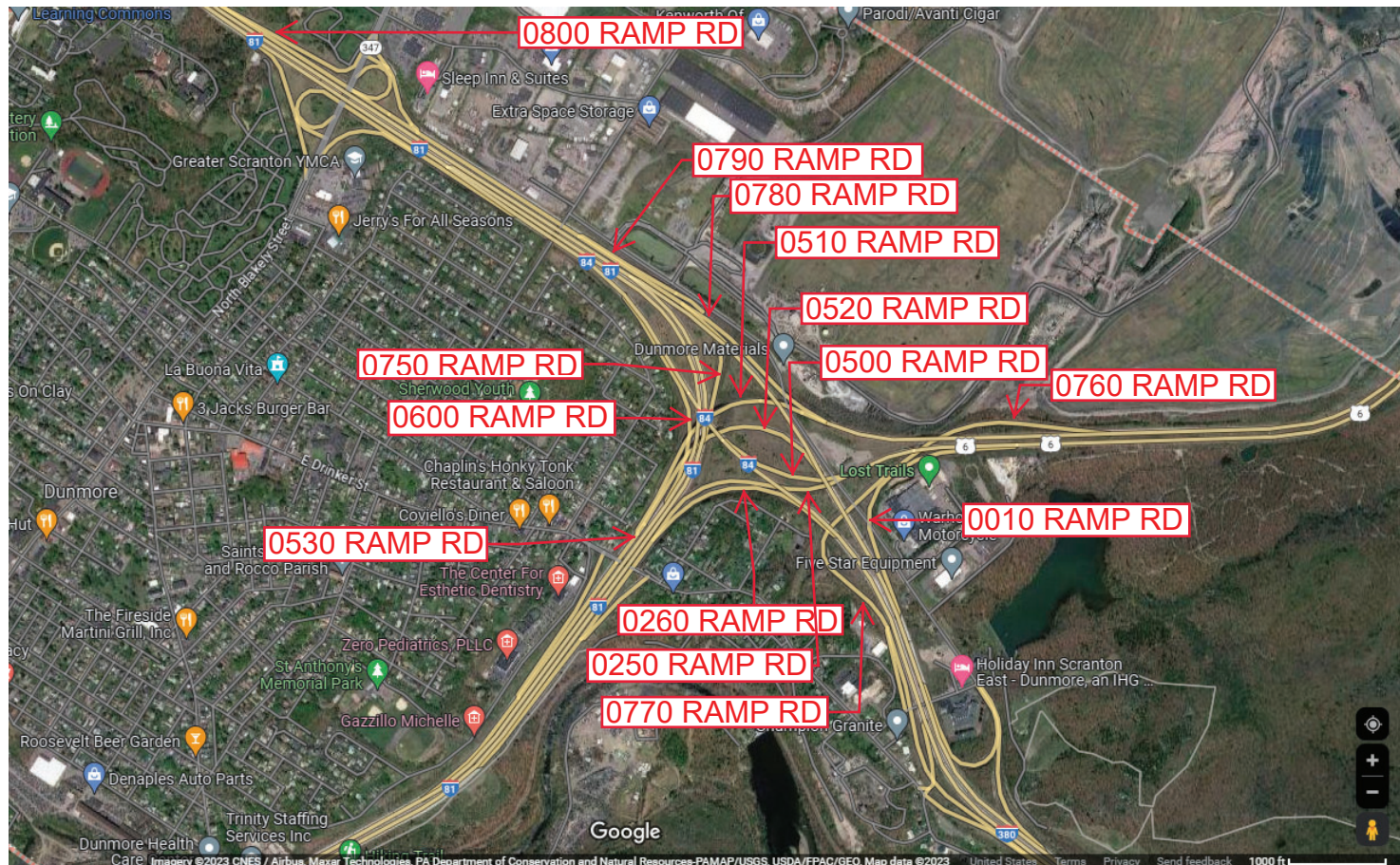
Ramp Segment Number and Ramp Segment Length Information:

Segment	Length	Segment	Length	Segment	Length	Segment	Length
0010	1825	0520	1654	0770	3655		
0250	1816	0530	2547	0780	1791		
0260	2774	0600	1485	0790	3687		
0500	0908	0750	1709	0800	3036		
0510	1817	0760	2920				

Primary Route Interchange Exit Number: 187

Secondary Route Interchange Exit Number: 188

PennDOT Type 10 Map View:



Last Date Modified: Jun 1, 2023

County: 35

RMS Interchange Information

Print Form

Interchange Number: 8025

Bureau of Maintenance & Operations
Asset Management Division



Interchange Name: CITY OF SCRANTON INT

Intersecting SR's: US 11, SR 3022 Central Scranton Ex & SR 3023 Cedar Av

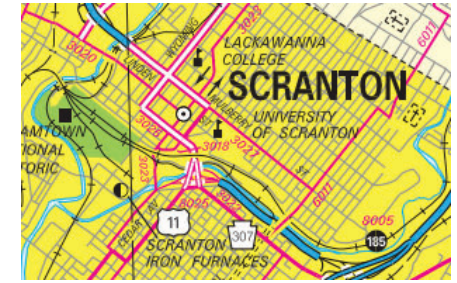
Ramp Segment Number and Ramp Segment Length Information:

Segment	Length	Segment	Length	Segment	Length	Segment	Length
0010	0579						
0250	1442						
0500	0644						
0510	0495						
0750	1866						

Primary Route Interchange Exit Number

Secondary Route Interchange Exit Number

PennDOT Type 10 Map View:



Last Date Modified:

Jun 1, 2023

County: 35

RMS Interchange Information

Print Form

Interchange Number: 8026

Bureau of Maintenance & Operations
Asset Management Division



Interchange Name: MARSHWOOD RD EXIT #1 INT

Intersecting SR's: US 6 & SR 2008 Marshwood Rd

Ramp Segment Number and Ramp Segment Length Information:

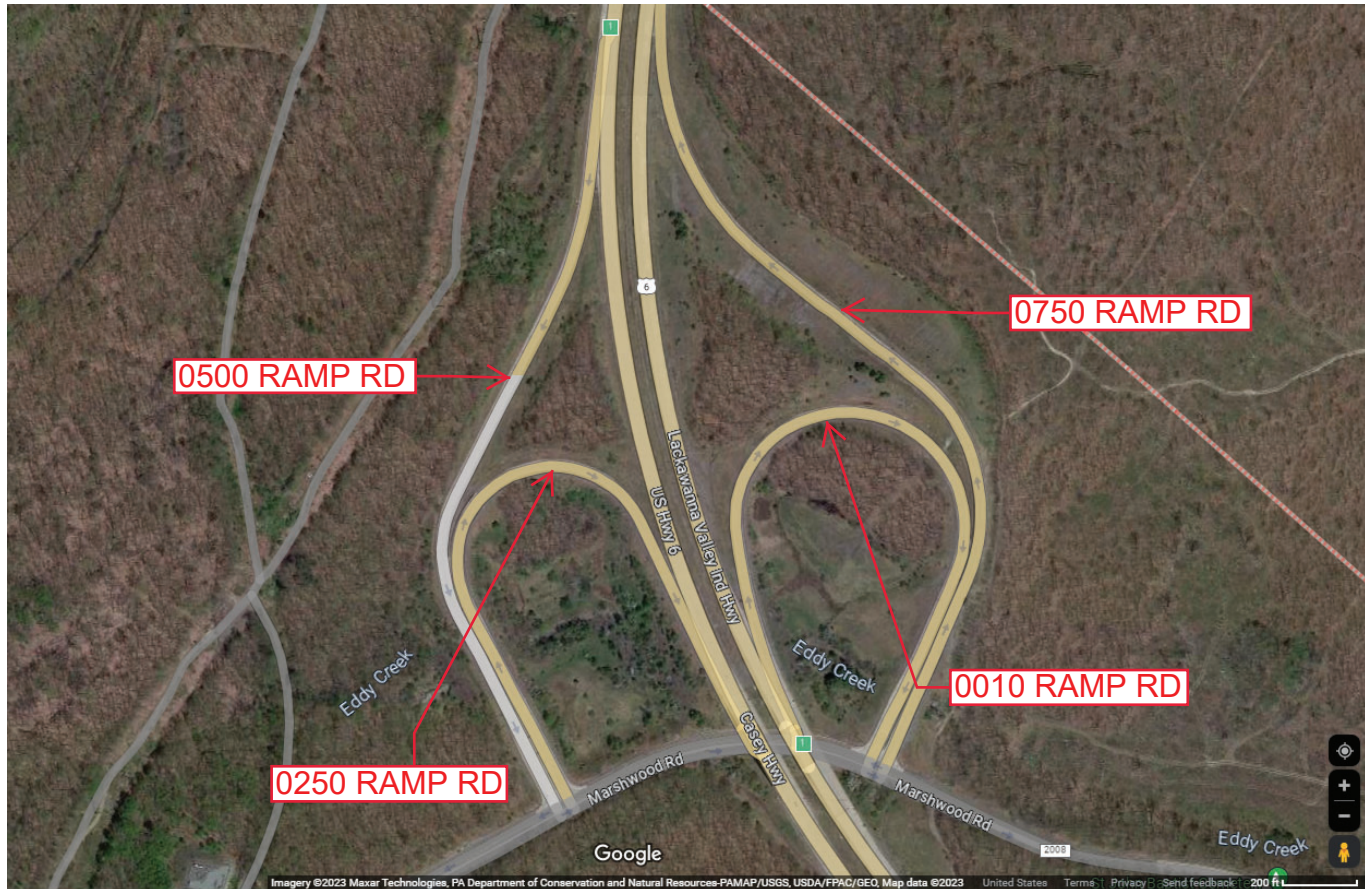
Segment	Length	Segment	Length	Segment	Length	Segment	Length
0010	1921						
0250	1575						
0500	1887						
0750	2349						

Primary Route
Interchange Exit
Number

1

Secondary Route
Interchange Exit
Number

PennDOT Type 10 Map View:



Last Date Modified:

Jun 1, 2023

County: 35

RMS Interchange Information

Print Form

Interchange Number: 8027

Bureau of Maintenance & Operations
Asset Management Division



Interchange Name: 7TH STREET INT

Intersecting SR's: US 11 Scranton Ex & SR 3029 Providence Rd, Seventh St

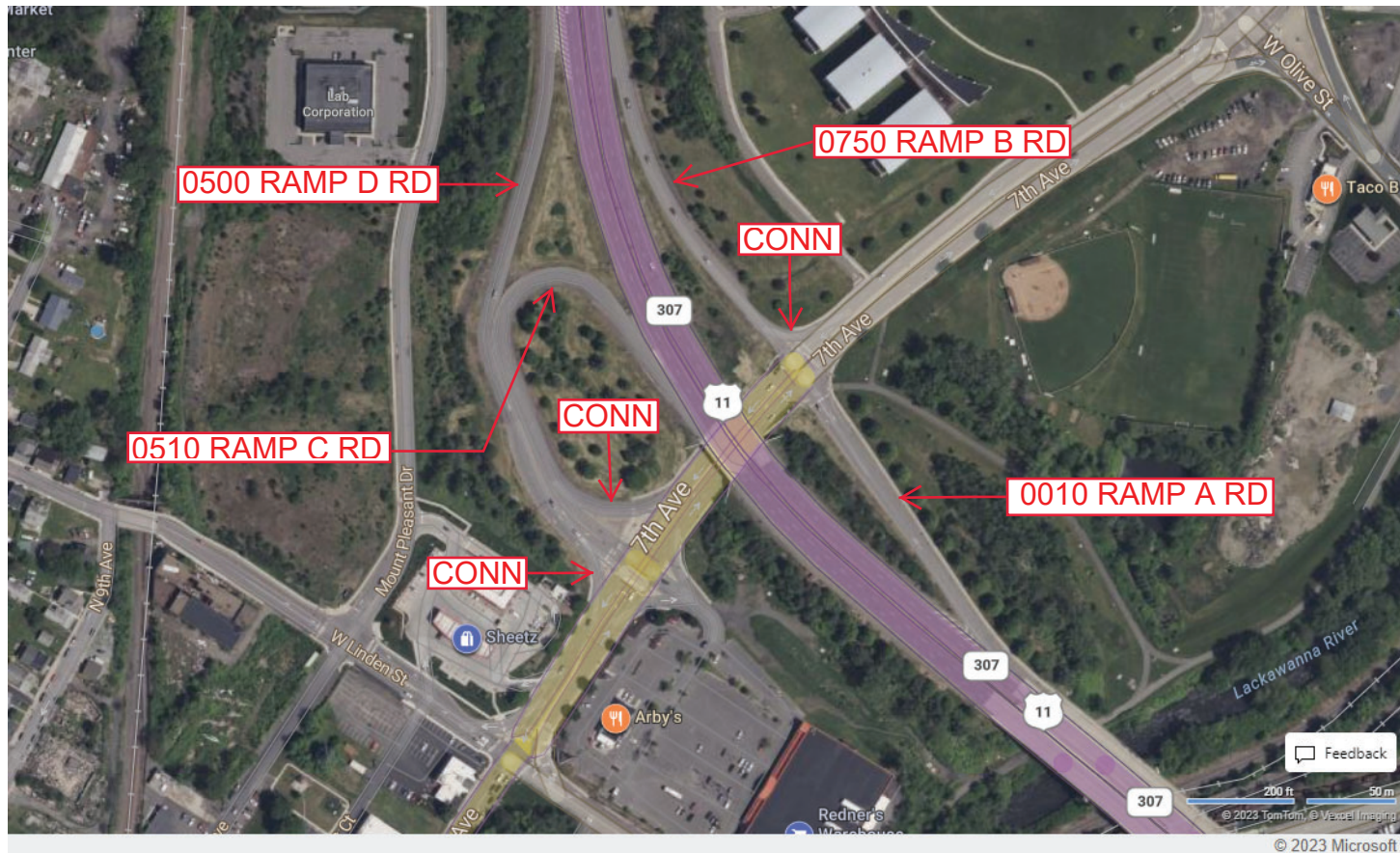
Ramp Segment Number and Ramp Segment Length Information:

Segment	Length	Segment	Length	Segment	Length	Segment	Length
0010	0537						
0500	1053						
0510	0814						
0750	0611						

Primary Route Interchange Exit Number

Secondary Route Interchange Exit Number

PennDOT Type 10 Map View:



Last Date Modified: Jun 2, 2023

County: **35**

RMS Interchange Information

Print Form

Interchange Number: **8028**

Bureau of Maintenance & Operations
Asset Management Division



Interchange Name: **E LACKAWANNA AV INT**

Intersecting SR's: **US 6 & E Lackawanna Av**

Ramp Segment Number and Ramp Segment Length Information:

Segment	Length	Segment	Length	Segment	Length	Segment	Length
0010	1371						
0250	2191						
0500	1301						
0750	0798						

Primary Route
Interchange Exit
Number

2

Secondary Route
Interchange Exit
Number

PennDOT Type 10 Map View:



Last Date Modified:

Jun 14, 2023

County: 35

RMS Interchange Information

Print Form

Interchange Number: 8029

Bureau of Maintenance & Operations
Asset Management Division



Interchange Name: MAIN AVE INT

Intersecting SR's: US 11 & SR 3013 Main Ave

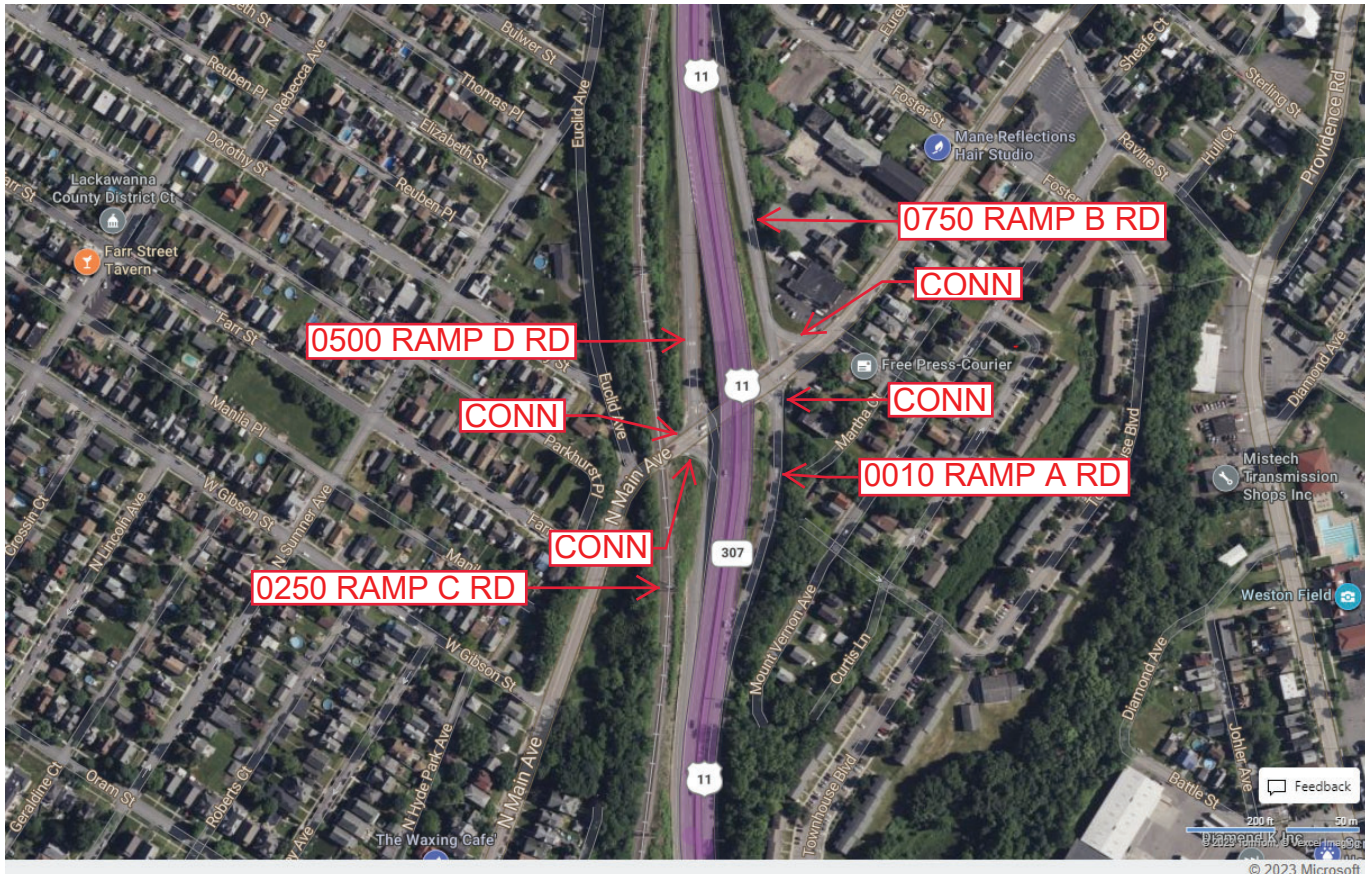
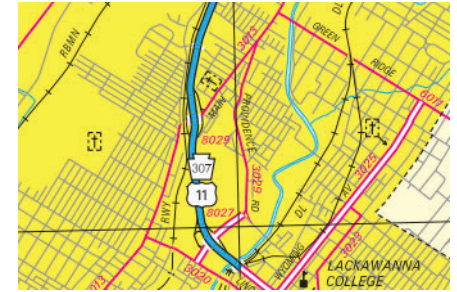
Ramp Segment Number and Ramp Segment Length Information:

Segment	Length	Segment	Length	Segment	Length	Segment	Length
0010	0517						
0250	0436						
0500	0499						
0750	0794						

Primary Route Interchange Exit Number

Secondary Route Interchange Exit Number

PennDOT Type 10 Map View:



Last Date Modified: Jun 14, 2023

County: 35

RMS Interchange Information

Print Form

Interchange Number: 8030

Bureau of Maintenance & Operations
Asset Management Division



Interchange Name: JESSUP EXIT #3 INT

Intersecting SR's: US 6, PA 247 Moosic Lake Rd & Veterans Memorial Dr

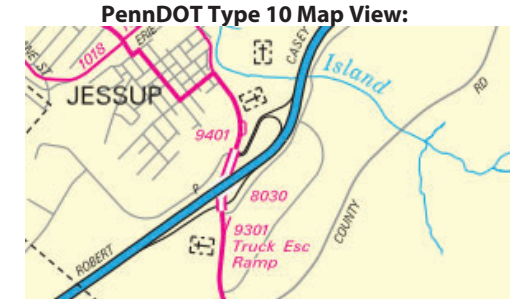
Ramp Segment Number and Ramp Segment Length Information:

Segment	Length	Segment	Length	Segment	Length	Segment	Length
0010	2176						
0500	2041						
0510	2102						
0750	1273						

Primary Route Interchange Exit Number

3

Secondary Route Interchange Exit Number



Last Date Modified:

Jun 14, 2023

County: 35

RMS Interchange Information

Print Form

Interchange Number: 8031

Bureau of Maintenance & Operations
Asset Management Division



Interchange Name: KEYSER AVE INT

Intersecting SR's: US 11, PA 307 Keyser Av & SR 6307 Keyser Av

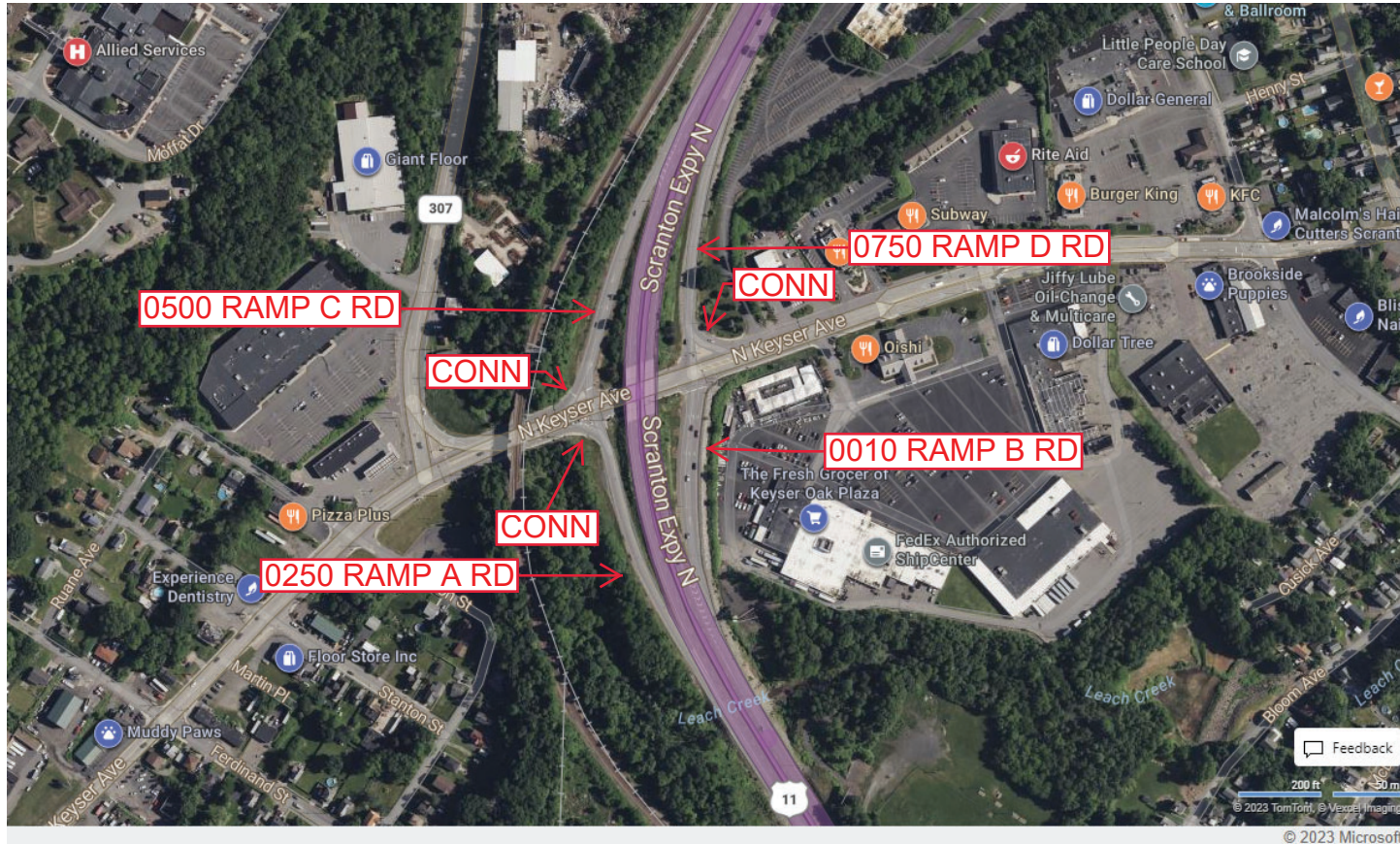
Ramp Segment Number and Ramp Segment Length Information:

Segment	Length	Segment	Length	Segment	Length	Segment	Length
0010	0474						
0250	0569						
0500	0583						
0750	0542						

Primary Route Interchange Exit Number

Secondary Route Interchange Exit Number

PennDOT Type 10 Map View:



Last Date Modified: Jun 15, 2023

County: 35

RMS Interchange Information

Print Form

Interchange Number: 8032

Bureau of Maintenance & Operations
Asset Management Division



Interchange Name: SALEM RD EXIT#4 INT

Intersecting SR's: US 6 & SR 1012 Salem Rd

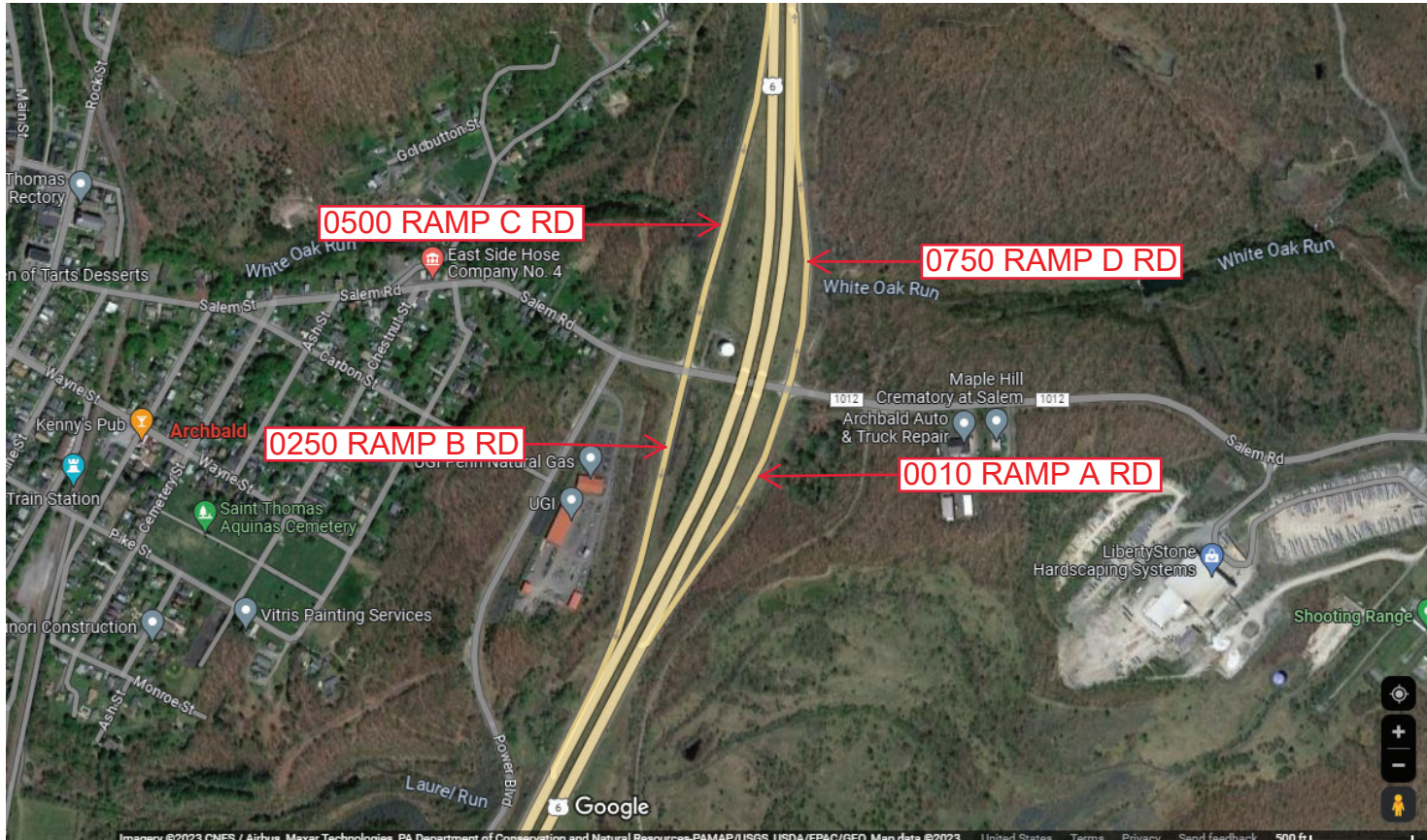
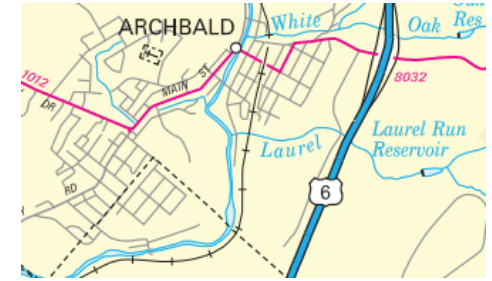
Ramp Segment Number and Ramp Segment Length Information:

Segment	Length	Segment	Length	Segment	Length	Segment	Length
0010	1125						
0250	1362						
0500	1584						
0750	1118						

Primary Route Interchange Exit Number: 4

Secondary Route Interchange Exit Number

PennDOT Type 10 Map View:



Last Date Modified: Jun 15, 2023

County: 35

RMS Interchange Information

Print Form

Interchange Number: 8033

Bureau of Maintenance & Operations
Asset Management Division



Interchange Name: NORTH SCRANTON EX INT

Intersecting SR's: US 11, SR 6006 (Bus) Scranton Carbondale Hw & SR 6011

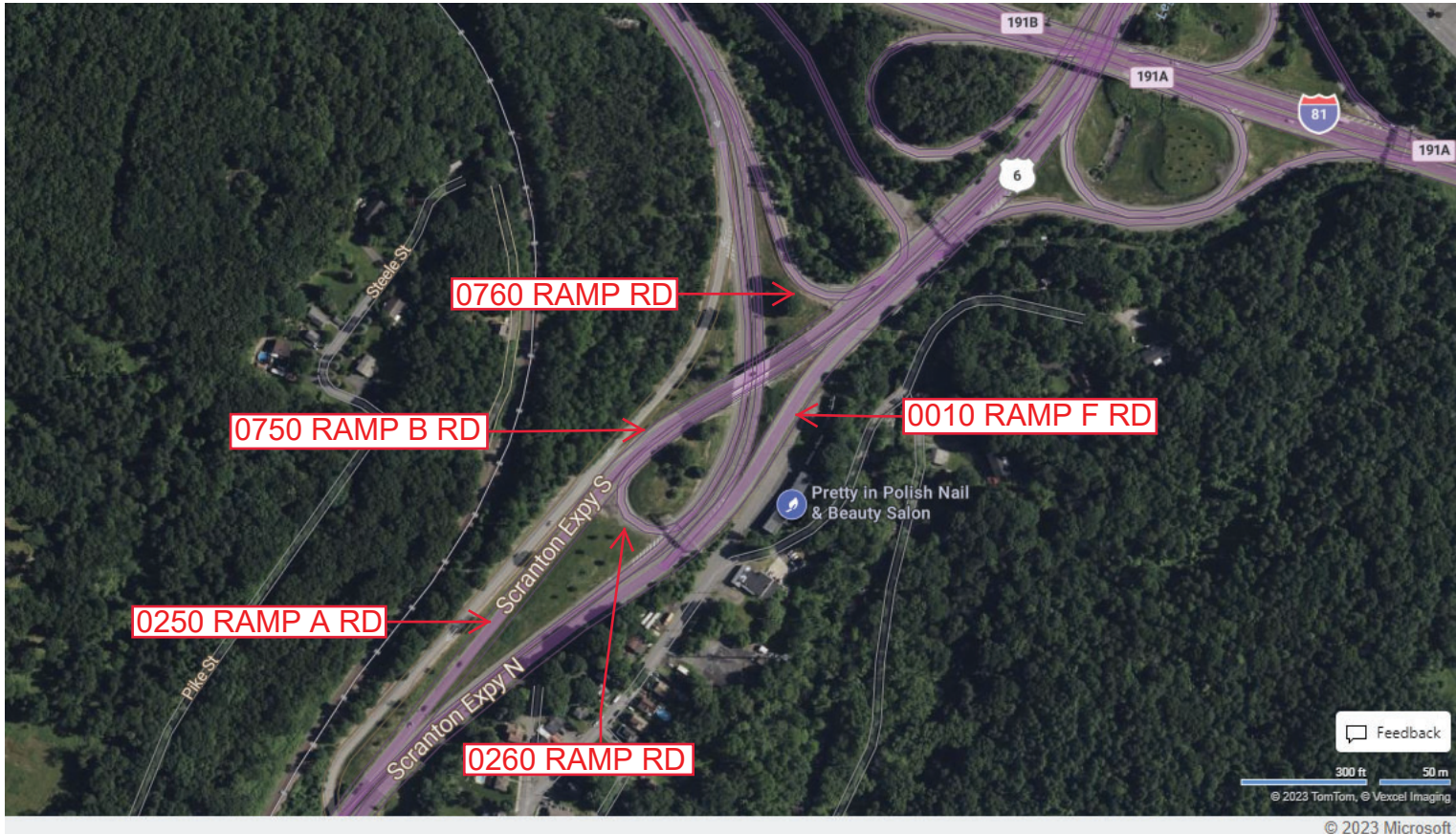
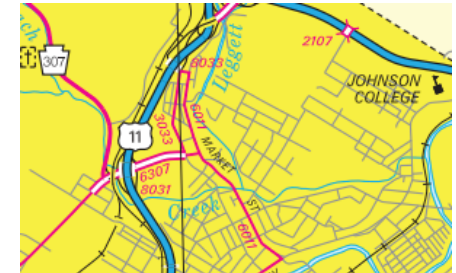
Ramp Segment Number and Ramp Segment Length Information:

Segment	Length	Segment	Length	Segment	Length	Segment	Length
0010	1024						
0250	0787						
0260	0508						
0750	0365						
0760	0385						

Primary Route Interchange Exit Number

Secondary Route Interchange Exit Number

PennDOT Type 10 Map View:



Feedback

300 ft 50 m

© 2023 TomTom, © Vexxel Imaging

© 2023 Microsoft

Last Date Modified:

Jun 16, 2023

County: 35

RMS Interchange Information

Print Form

Interchange Number: 8034

Bureau of Maintenance & Operations
Asset Management Division



Interchange Name: JERMYN/MAYFIELD INT

Intersecting SR's: US 6 & PA 107 Rushbrook St

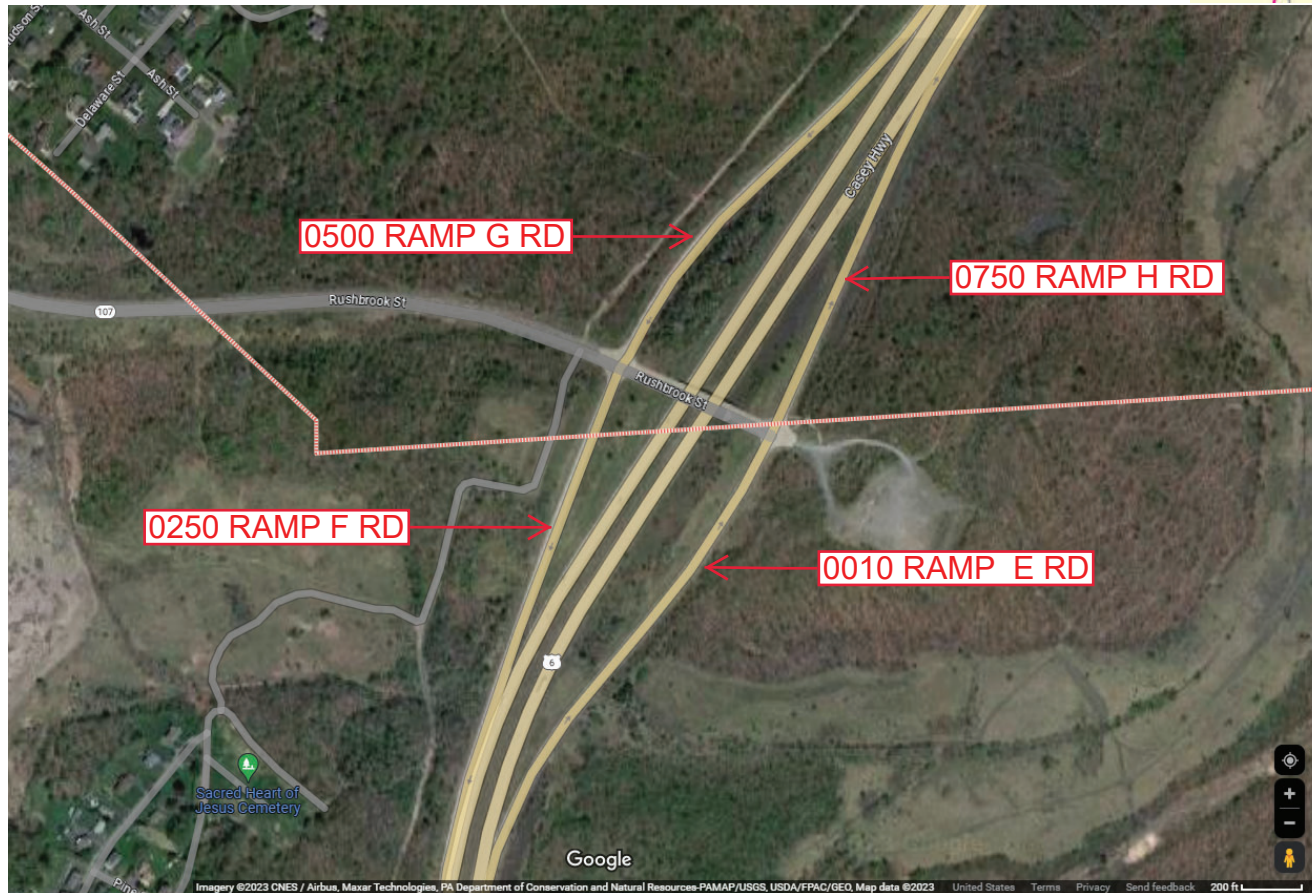
Ramp Segment Number and Ramp Segment Length Information:

Segment	Length	Segment	Length	Segment	Length	Segment	Length
0010	1624						
0250	1055						
0500	1473						
0750	1137						

Primary Route Interchange Exit Number: 5

Secondary Route Interchange Exit Number:

PennDOT Type 10 Map View:



Last Date Modified: Jun 16, 2023

County: 35

RMS Interchange Information

Print Form

Interchange Number: 8036

Bureau of Maintenance & Operations
Asset Management Division



Interchange Name: MEREDITH ST INT

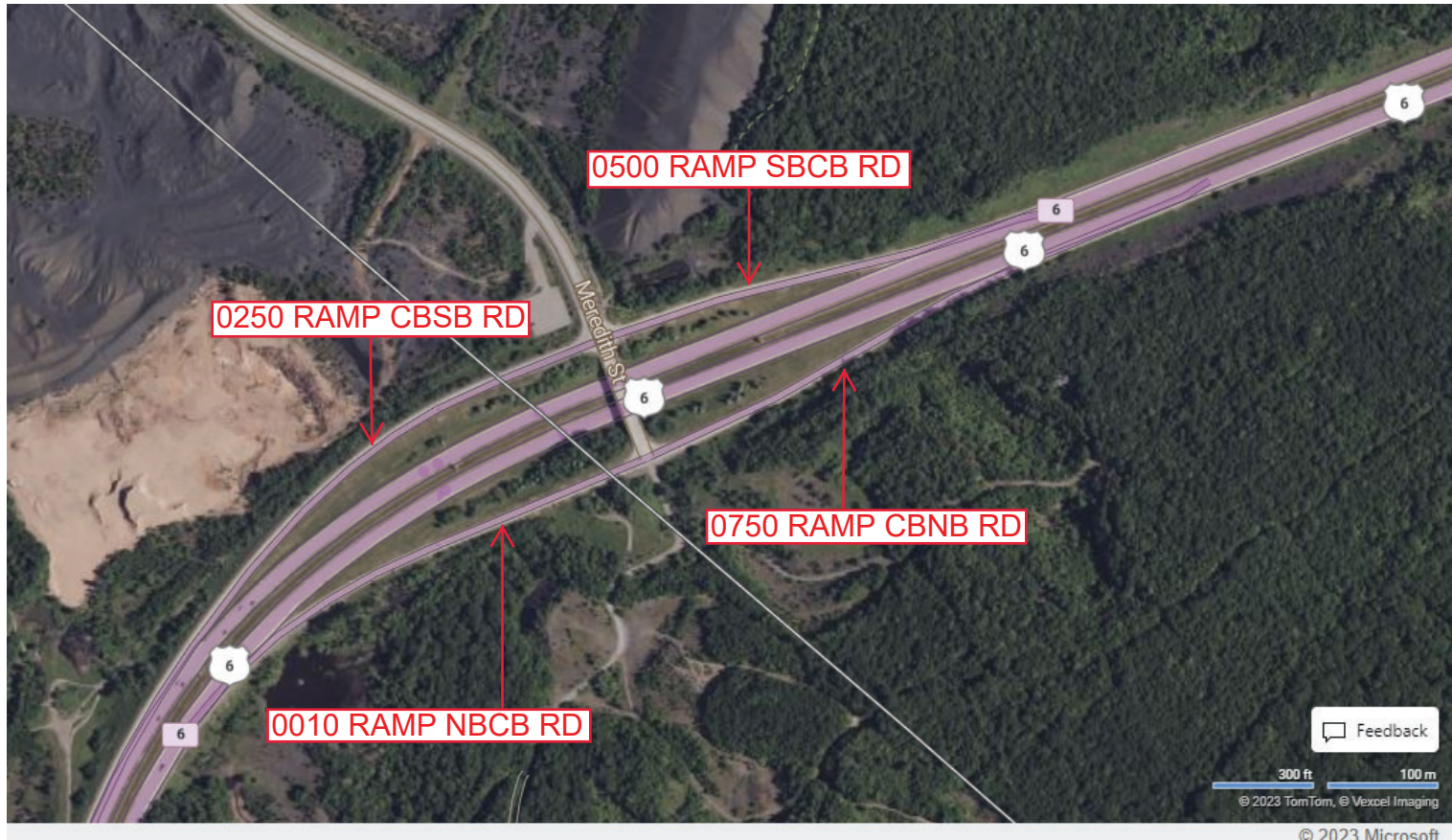
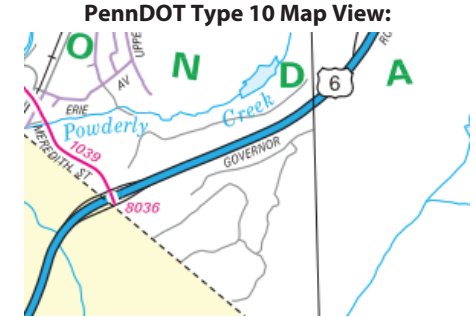
Intersecting SR's: US 6 & SR 1039 Meredith St

Ramp Segment Number and Ramp Segment Length Information:

Segment	Length	Segment	Length	Segment	Length	Segment	Length
0010	1226						
0250	1526						
0500	0908						
0750	1070						

Primary Route Interchange Exit Number: 6

Secondary Route Interchange Exit Number:



Feedback

300 ft 100 m
© 2023 TomTom, © Vexcel Imaging

© 2023 Microsoft

Last Date Modified: Jun 16, 2023

County: **35**

RMS Interchange Information

Print Form

Interchange Number: **8039**

Bureau of Maintenance & Operations
Asset Management Division



Interchange Name: **RIVER ST INT**

Intersecting SR's: **I-81 & River St**

Ramp Segment Number and Ramp Segment Length Information:

Segment	Length	Segment	Length	Segment	Length	Segment	Length
0010	0589						
0250	0689						
0750	0833						

Primary Route Interchange Exit Number: **184**

Secondary Route Interchange Exit Number:

PennDOT Type 10 Map View:



Last Date Modified: **Jun 16, 2023**

County: 35

RMS Interchange Information

Print Form

Interchange Number: 8041

Bureau of Maintenance & Operations
Asset Management Division



Interchange Name: CLARK SUMMIT BOROUGH INT

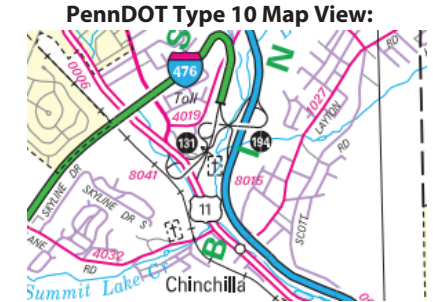
Intersecting SR's: PA Turnpike, US 6 Northern BI & US 11 Northern BI

Ramp Segment Number and Ramp Segment Length Information:

Segment	Length	Segment	Length	Segment	Length	Segment	Length
0010	1093						
0020	1007						

Primary Route Interchange Exit Number: 131

Secondary Route Interchange Exit Number



Last Date Modified:

Nov 4, 2024

County: 35

RMS Interchange Information

Print Form

Interchange Number: 8043

Bureau of Maintenance & Operations
Asset Management Division



Interchange Name: DALEVILLE BOROUGH INT

Intersecting SR's: I-380 & PA 307 Scranton Daleville Hw

Ramp Segment Number and Ramp Segment Length Information:

Segment	Length	Segment	Length	Segment	Length	Segment	Length
0010	1071						
0250	1029						
0500	0832						
0750	1297						

Primary Route Interchange Exit Number: 20

Secondary Route Interchange Exit Number

PennDOT Type 10 Map View:



Feedback
500 ft 100 m
© 2023 TomTom, © Vexcel Imaging

© 2023 Microsoft

Last Date Modified:

Jun 20, 2023

County: 35

RMS Interchange Information

Print Form

Interchange Number: 8045

Bureau of Maintenance & Operations
Asset Management Division



Interchange Name: MOSCOW BOROUGH INT

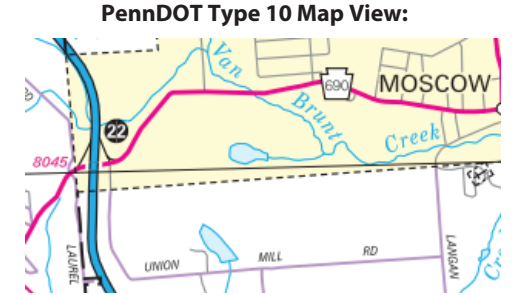
Intersecting SR's: I-380 & PA 690 Church St

Ramp Segment Number and Ramp Segment Length Information:

Segment	Length	Segment	Length	Segment	Length	Segment	Length
0500	0772						
0750	0644						

Primary Route Interchange Exit Number: 22

Secondary Route Interchange Exit Number



Last Date Modified: Jun 20, 2023

County: 35

RMS Interchange Information

Print Form

Interchange Number: 9201

Bureau of Maintenance & Operations
Asset Management Division



Interchange Name: I-380 NORTHBOUND WEIGH STATION

Intersecting SR's: I-380 Northbound Weigh Station

Ramp Segment Number and Ramp Segment Length Information:

Segment	Length	Segment	Length	Segment	Length	Segment	Length
0010	2123						

Primary Route
Interchange Exit
Number

Secondary Route
Interchange Exit
Number

PennDOT Type 10 Map View:



Last Date Modified:

Jun 20, 2023

County: 35

RMS Interchange Information

Print Form

Interchange Number: 9202

Bureau of Maintenance & Operations
Roadway Management Division



Interchange Name: SOUTHBOUND WEIGH STATION

Intersecting SR's: I-380 SOUTHBOUND WEIGH STATION

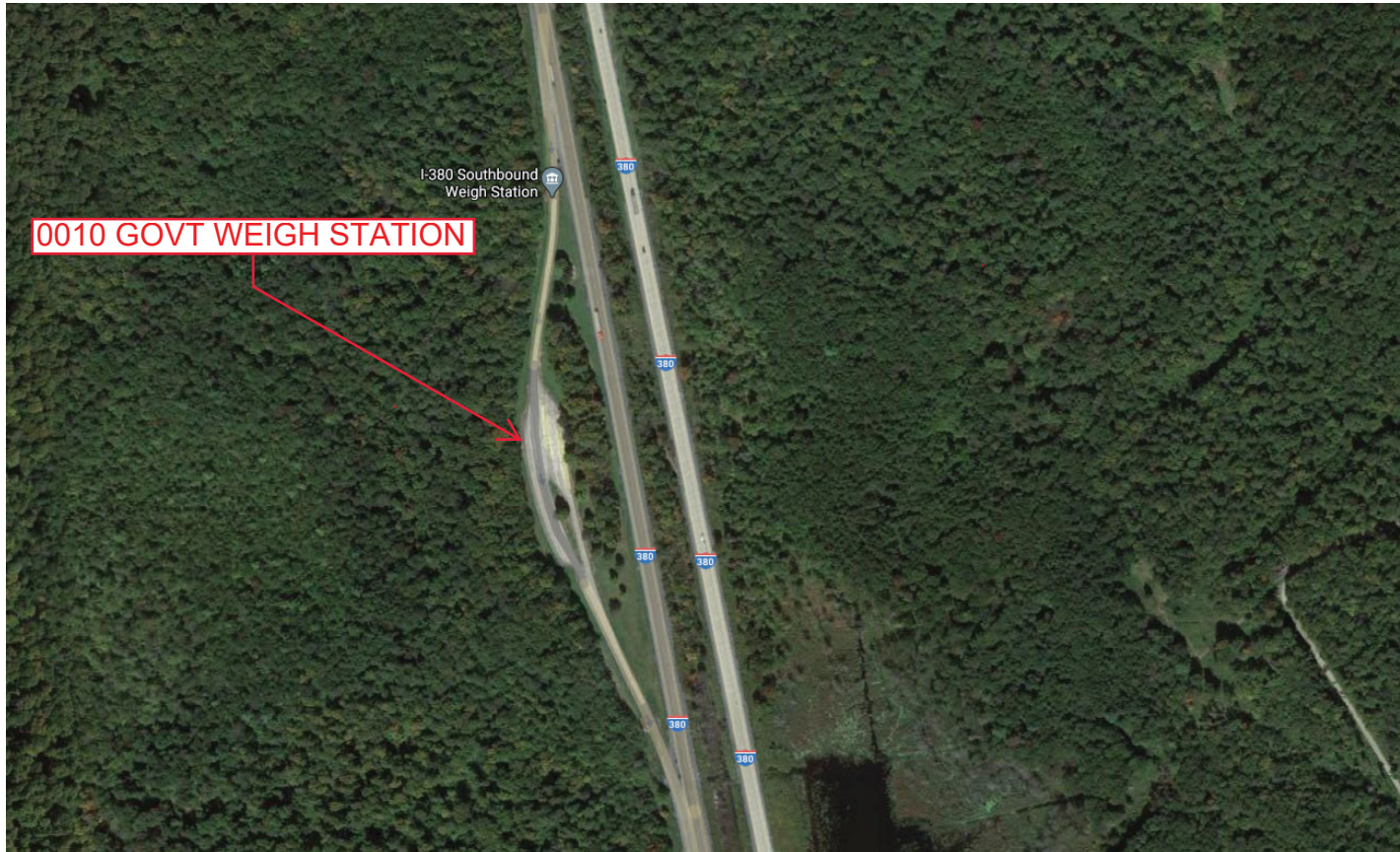
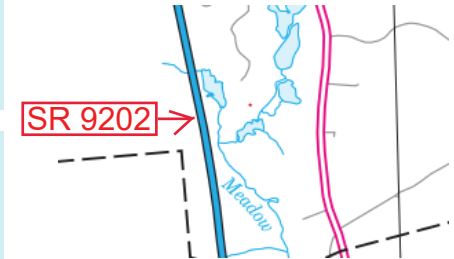
Ramp Segment Number and Ramp Segment Length Information:

Segment	Length	Segment	Length	Segment	Length	Segment	Length
0010	1829						

Primary Route Interchange Exit Number

Secondary Route Interchange Exit Number

PennDOT Type 10 Map View:



Last Date Modified:

Jan 5, 2021

County: 35

RMS Interchange Information

Print Form

Interchange Number: 9203

Bureau of Maintenance & Operations
Asset Management Division



Interchange Name: US 6 SCENIC OVERLOOK

Intersecting SR's: US 6

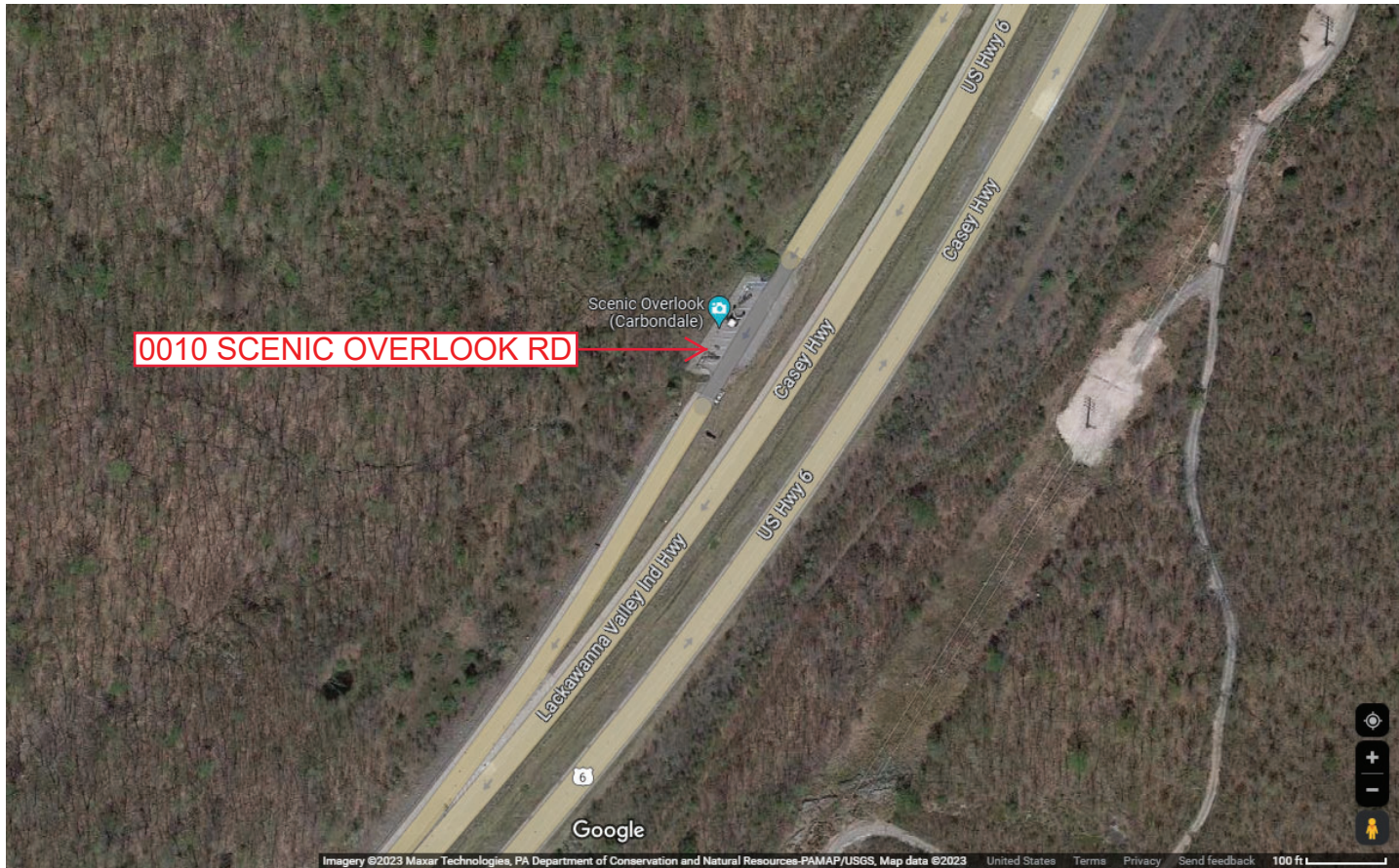
Ramp Segment Number and Ramp Segment Length Information:

Segment	Length	Segment	Length	Segment	Length	Segment	Length
0010	1232						

Primary Route
Interchange Exit
Number

Secondary Route
Interchange Exit
Number

PennDOT Type 10 Map View:



Last Date Modified: Jun 21, 2023

County: 35

RMS Interchange Information

Print Form

Interchange Number: 9204

Bureau of Maintenance & Operations
Asset Management Division



Interchange Name: I-81 NORTHBOUND ROADSIDE REST

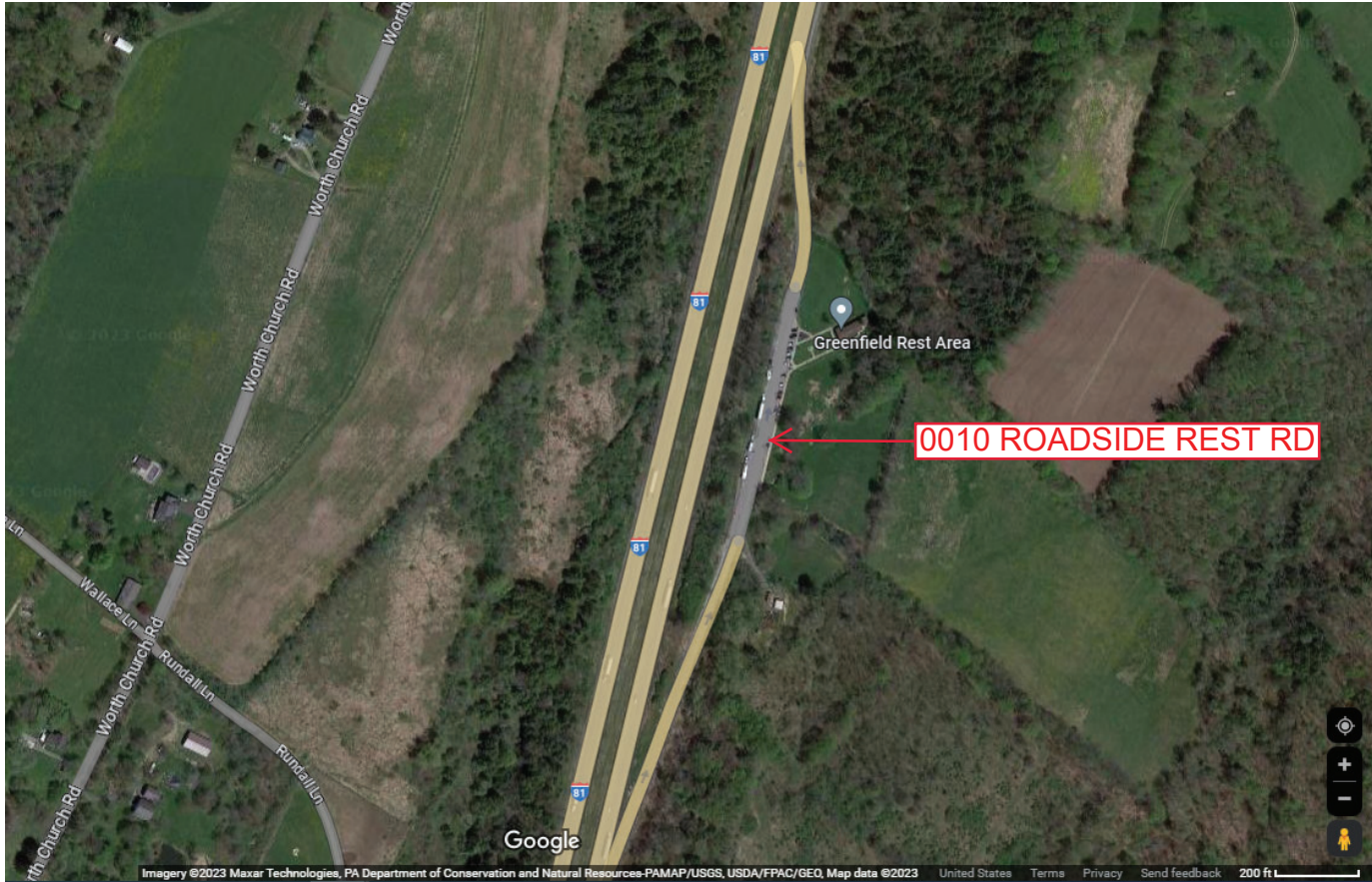
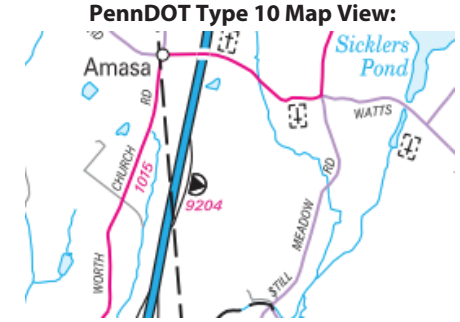
Intersecting SR's: I-81

Ramp Segment Number and Ramp Segment Length Information:

Segment	Length	Segment	Length	Segment	Length	Segment	Length
0010	1803						

Primary Route Interchange Exit Number

Secondary Route Interchange Exit Number



0010 ROADSIDE REST RD

Last Date Modified:

Jun 21, 2023

County: 35

RMS Interchange Information

Print Form

Interchange Number: 9301

Bureau of Maintenance & Operations
Asset Management Division



Interchange Name: RUNAWAY TRUCK RAMP

Intersecting SR's: PA 247 Moosic Lake Rd

Ramp Segment Number and Ramp Segment Length Information:

Segment	Length	Segment	Length	Segment	Length	Segment	Length
0010	0250						

Primary Route
Interchange Exit
Number

Secondary Route
Interchange Exit
Number

PennDOT Type 10 Map View:



Last Date Modified:

Jun 21, 2023

County: 35

RMS Interchange Information

Print Form

Interchange Number: 9401

Bureau of Maintenance & Operations
Asset Management Division



Interchange Name: PARK-N-RIDE

Intersecting SR's: PA 247 Moosic Lake Rd

Ramp Segment Number and Ramp Segment Length Information:

Segment	Length	Segment	Length	Segment	Length	Segment	Length
0010	0490						
0020	0219						

Primary Route Interchange Exit Number

Secondary Route Interchange Exit Number

PennDOT Type 10 Map View:



Last Date Modified: Jun 21, 2023

County: 35

RMS Interchange Information

Print Form

Interchange Number: 9402

Bureau of Maintenance & Operations
Asset Management Division



Interchange Name: PA 435 DRINKER TURNPIKE JUGHANDLE

Intersecting SR's: PA 435 Drinker Tp

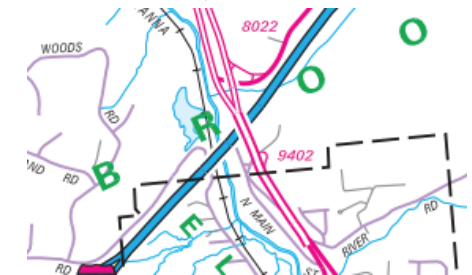
Ramp Segment Number and Ramp Segment Length Information:

Segment	Length	Segment	Length	Segment	Length	Segment	Length
0010	0266						

Primary Route
Interchange Exit
Number

Secondary Route
Interchange Exit
Number

PennDOT Type 10 Map View:



Last Date Modified:

Jun 21, 2023

County: 35

RMS Interchange Information

Print Form

Interchange Number: 9403

Bureau of Maintenance & Operations
Asset Management Division



Interchange Name: PARK-N-RIDE

Intersecting SR's: SR 1039 Meredith St

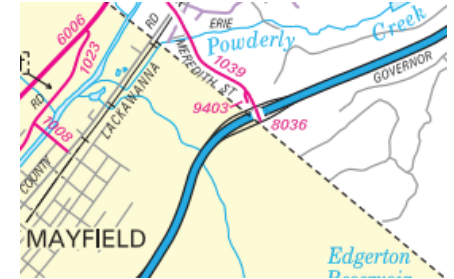
Ramp Segment Number and Ramp Segment Length Information:

Segment	Length	Segment	Length	Segment	Length	Segment	Length
0010	0328						

Primary Route Interchange Exit Number

Secondary Route Interchange Exit Number

PennDOT Type 10 Map View:



Last Date Modified: Jun 22, 2023

County: 35

RMS Interchange Information

Print Form

Interchange Number: 9405

Bureau of Maintenance & Operations
Asset Management Division



Interchange Name: PARK-N-RIDE

Intersecting SR's: PA 247 Moosic Lake Rd

Ramp Segment Number and Ramp Segment Length Information:

Segment	Length	Segment	Length	Segment	Length	Segment	Length
0010	0479						

Primary Route Interchange Exit Number

Secondary Route Interchange Exit Number

PennDOT Type 10 Map View:



Last Date Modified: Jun 22, 2023

County: 35

RMS Interchange Information

Print Form

Interchange Number: 9502

Bureau of Maintenance & Operations
Asset Management Division



Interchange Name: PARK-N-RIDE

Intersecting SR's: PA 307 Scranton Pocono Hw

Ramp Segment Number and Ramp Segment Length Information:

Segment	Length	Segment	Length	Segment	Length	Segment	Length
0010	0620						

Primary Route Interchange Exit Number

Secondary Route Interchange Exit Number

PennDOT Type 10 Map View:



Last Date Modified: Jun 22, 2023