

County: 40

# RMS Interchange Information

Print Form

Interchange Number: 8001

Bureau of Maintenance & Operations  
Asset Management Division



Interchange Name: CITY OF HAZLETON INT

Intersecting SR's: I-81 & PA 924 Hazleton Shepton Hw

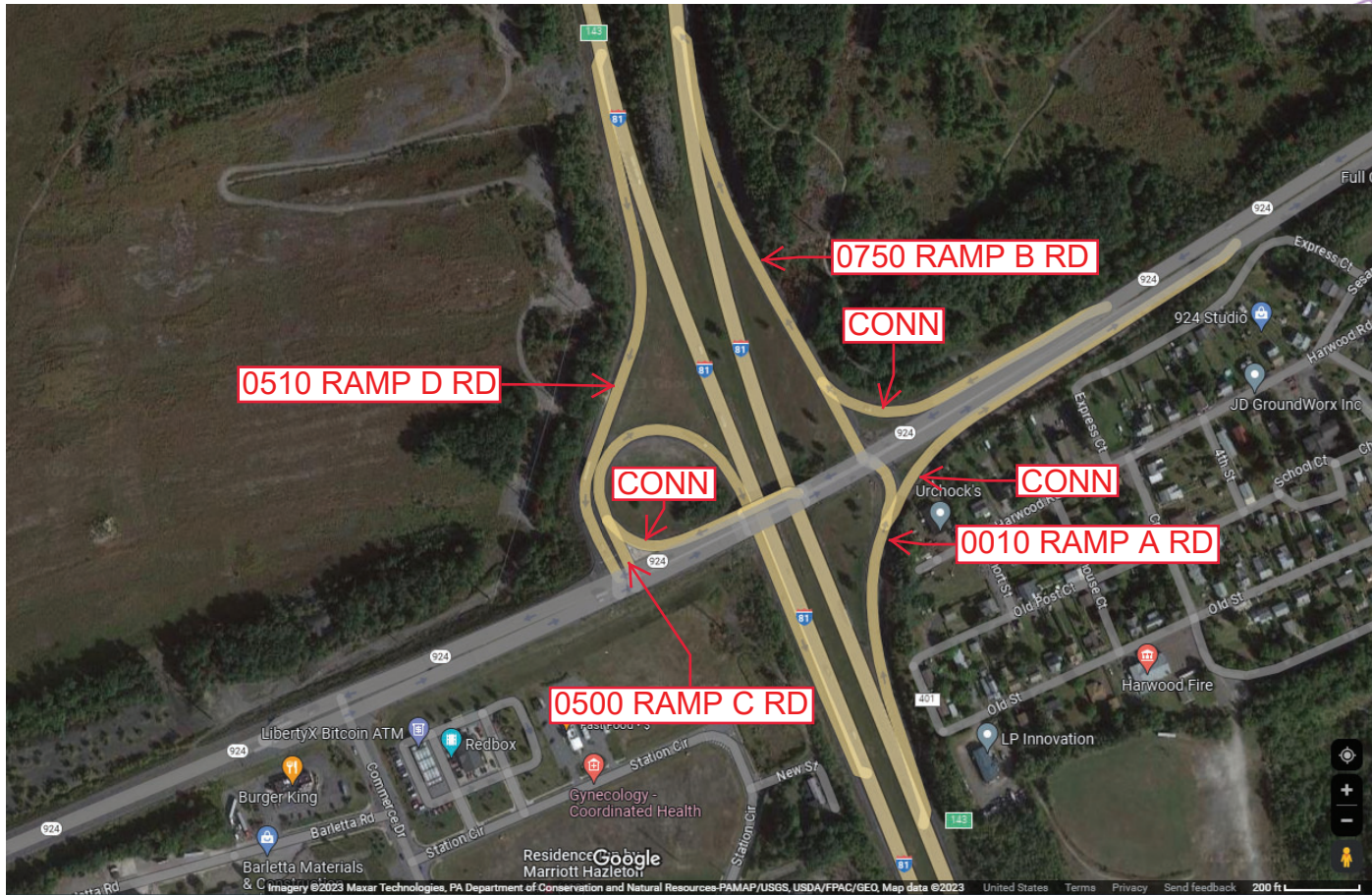
Ramp Segment Number and Ramp Segment Length Information:

Segment	Length	Segment	Length	Segment	Length	Segment	Length
0010	0637						
0500	0769						
0510	1069						
0750	0950						

Primary Route Interchange Exit Number: 143

Secondary Route Interchange Exit Number

PennDOT Type 10 Map View:



Last Date Modified: Jun 22, 2023

County: 40

# RMS Interchange Information

Print Form

Interchange Number: 8002

Bureau of Maintenance & Operations  
Asset Management Division



Interchange Name: NESCOPECK BORO INT

Intersecting SR's: I-80 & PA 93 Susquehanna Av

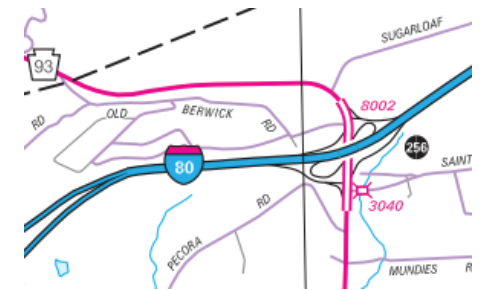
Ramp Segment Number and Ramp Segment Length Information:

Segment	Length	Segment	Length	Segment	Length	Segment	Length
0010	1343	0750	0923				
0020	1133						
0250	0705						
0500	1011						
0510	0783						

Primary Route Interchange Exit Number: 256

Secondary Route Interchange Exit Number

PennDOT Type 10 Map View:



Last Date Modified:

Jun 23, 2023

County: 40

# RMS Interchange Information

Print Form

Bureau of Maintenance & Operations  
Asset Management Division



Interchange Number: 8003

Interchange Name: WEST HAZLETON BORO INT

Intersecting SR's: I-81 & PA 93 Susquehanna Av

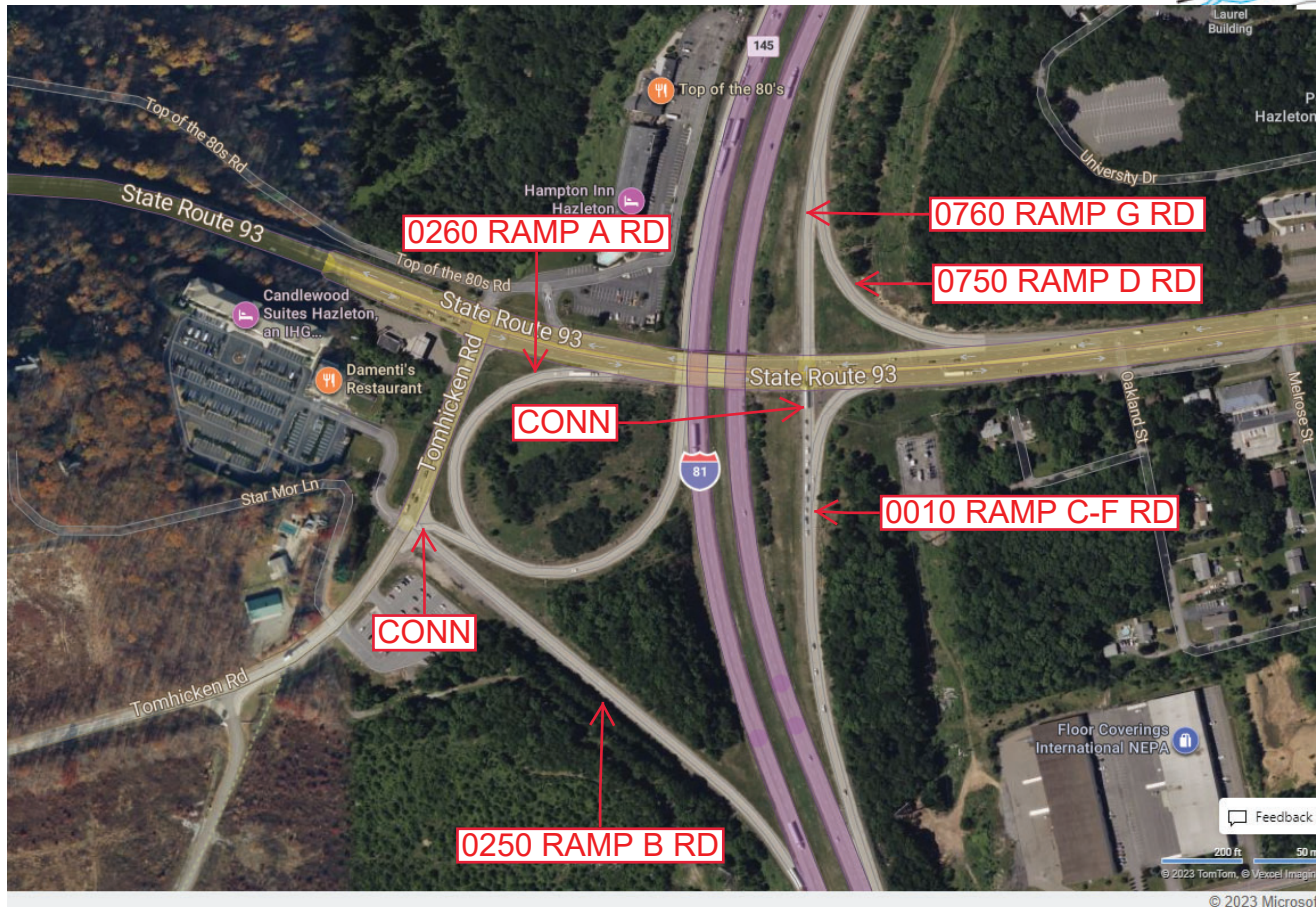
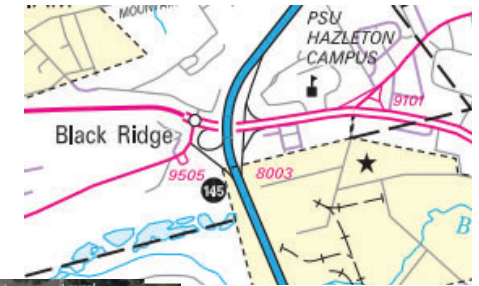
Ramp Segment Number and Ramp Segment Length Information:

Segment	Length	Segment	Length	Segment	Length	Segment	Length
0010	1131						
0250	1302						
0260	1362						
0750	0440						
0760	1438						

Primary Route Interchange Exit Number: 145

Secondary Route Interchange Exit Number

PennDOT Type 10 Map View:



Last Date Modified: Jun 27, 2023

County: 40

# RMS Interchange Information

Print Form

Interchange Number: 8004

Bureau of Maintenance & Operations  
Asset Management Division



Interchange Name: CITY OF HAZLETON INT

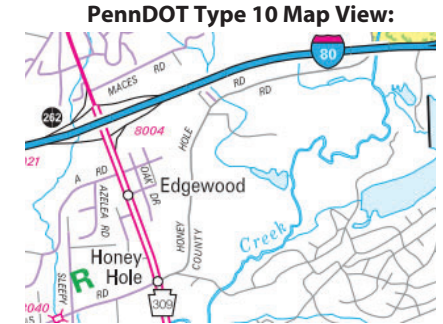
Intersecting SR's: I-81 & PA 309 Hunter Hw

Ramp Segment Number and Ramp Segment Length Information:

Segment	Length	Segment	Length	Segment	Length	Segment	Length
0010	0801						
0250	0728						
0500	0743						
0750	0208						
0760	0896						

Primary Route Interchange Exit Number: 262

Secondary Route Interchange Exit Number



Feedback  
300 ft 100 m  
© 2023 TomTom, © Vexcel Imaging  
© 2023 Microsoft

Last Date Modified:

Jun 27, 2023

County: 40

# RMS Interchange Information

Print Form

Interchange Number: 8005

Bureau of Maintenance & Operations  
Asset Management Division



Interchange Name: I-80 SH

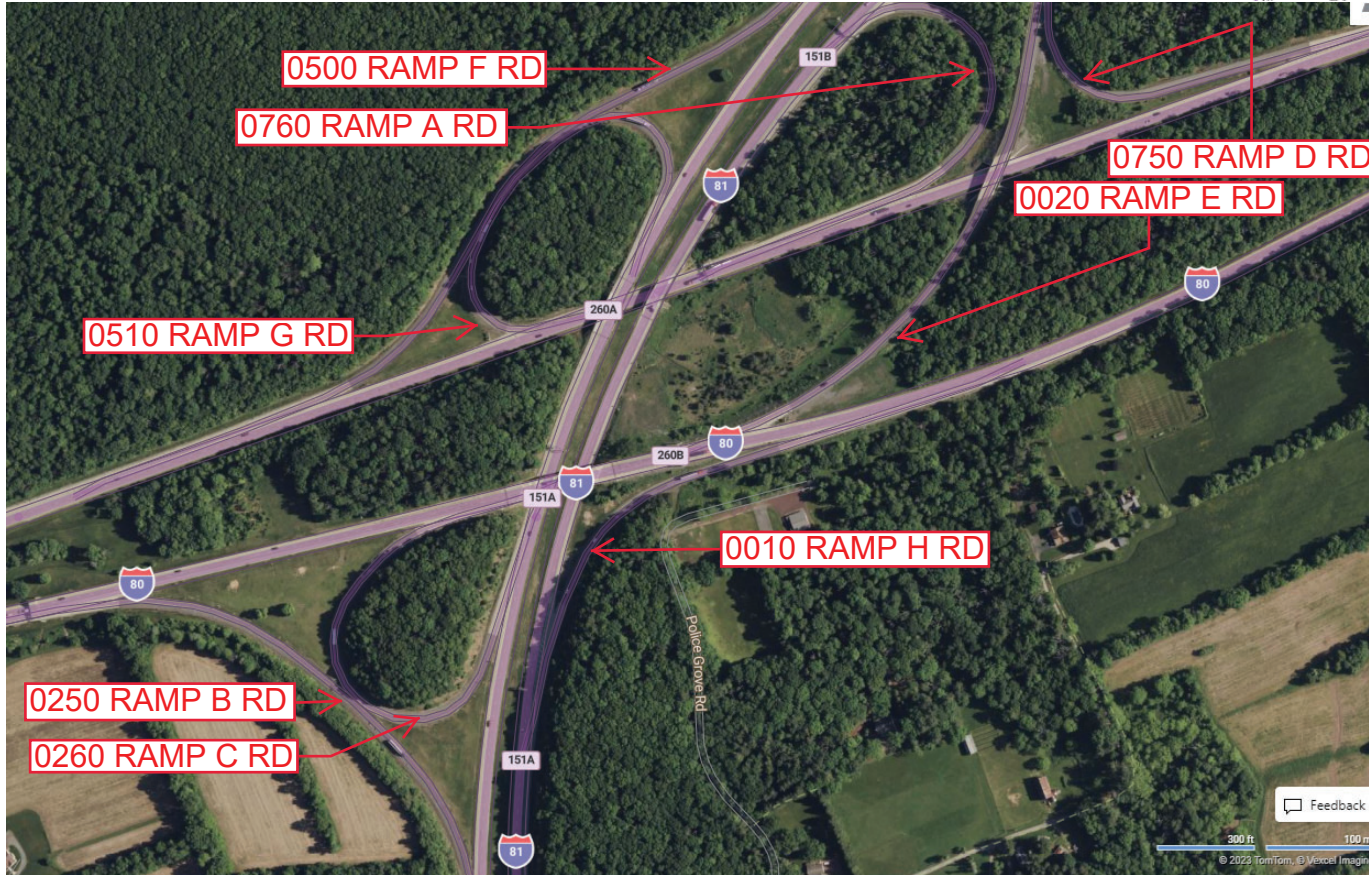
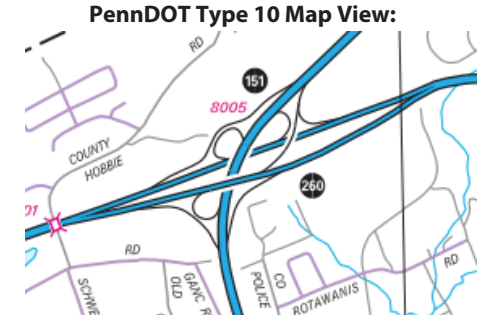
Intersecting SR's: I-81 & I-80

Ramp Segment Number and Ramp Segment Length Information:

Segment	Length	Segment	Length	Segment	Length	Segment	Length
0010	0980	0510	1245				
0020	2296	0750	0933				
0250	1449	0760	0863				
0260	1270						
0500	2021						

Primary Route Interchange Exit Number: 260A/260B

Secondary Route Interchange Exit Number: 151A/151B



Feedback  
300 ft 100 m  
© 2023 TomTom, © Vexcel Imaging  
© 2023 Microsoft

Last Date Modified: Jun 28, 2023

County: 40

# RMS Interchange Information

Print Form

Interchange Number: 8006

Bureau of Maintenance & Operations  
Asset Management Division



Interchange Name: WHITE HAVEN BORO INT

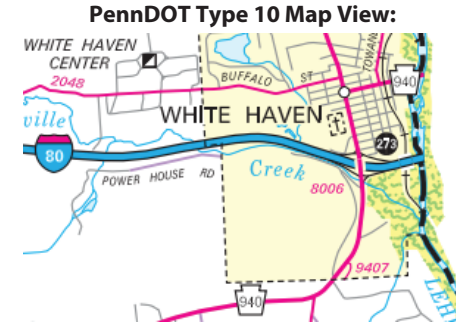
Intersecting SR's: I-80 & PA 940 Church St

Ramp Segment Number and Ramp Segment Length Information:

Segment	Length	Segment	Length	Segment	Length	Segment	Length
0010	0590						
0250	0557						
0500	0810						
0750	0625						

Primary Route Interchange Exit Number: 273

Secondary Route Interchange Exit Number



Last Date Modified: Jun 28, 2023

County: 40

# RMS Interchange Information

Print Form

Interchange Number: 8007

Bureau of Maintenance & Operations  
Asset Management Division



Interchange Name: DORRANCE BORO INT

Intersecting SR's: I-81 & SR 3007 Blue Ridge Tr

Ramp Segment Number and Ramp Segment Length Information:

Segment	Length	Segment	Length	Segment	Length	Segment	Length
0010	0813						
0250	0885						
0500	0904						
0750	0604						

Primary Route Interchange Exit Number: 155

Secondary Route Interchange Exit Number

PennDOT Type 10 Map View:



© 2023 Microsoft

Last Date Modified:

Jun 28, 2023

County: 40

# RMS Interchange Information

Print Form

Interchange Number: 8009

Bureau of Maintenance & Operations  
Asset Management Division



Interchange Name: NUANGOLA BORO INT

Intersecting SR's: I-81, SR 2042 Church Rd & SR 3005 Nuangola Rd

Ramp Segment Number and Ramp Segment Length Information:

Segment	Length	Segment	Length	Segment	Length	Segment	Length
0010	0735						
0250	0739						
0500	0830						
0750	0455						

Primary Route Interchange Exit Number: 159

Secondary Route Interchange Exit Number

PennDOT Type 10 Map View:



Last Date Modified: Jun 28, 2023



County: 40

# RMS Interchange Information

Print Form

Interchange Number: 8011

Bureau of Maintenance & Operations  
Asset Management Division



Interchange Name: NANTICOKE BORO INT

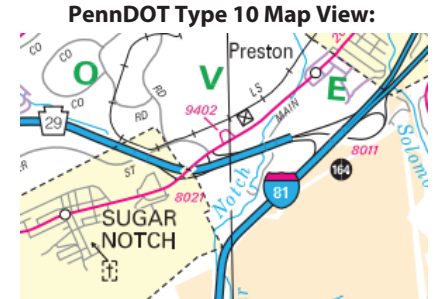
Intersecting SR's: I-81 & PA 29 South Cross Valley Ex

Ramp Segment Number and Ramp Segment Length Information:

Segment	Length	Segment	Length	Segment	Length	Segment	Length
0250	1275						
0500	1396						
0750	3513						
0760	2616						

Primary Route Interchange Exit Number: 164

Secondary Route Interchange Exit Number



Feedback  
300 ft 100 m  
© 2023 TomTom, © Vexcel Imaging  
© 2023 Microsoft

Last Date Modified: Jun 29, 2023

County: 40

# RMS Interchange Information

Print Form

Interchange Number: 8013

Bureau of Maintenance & Operations  
Asset Management Division



Interchange Name: W-B/MOUNTAINTOP

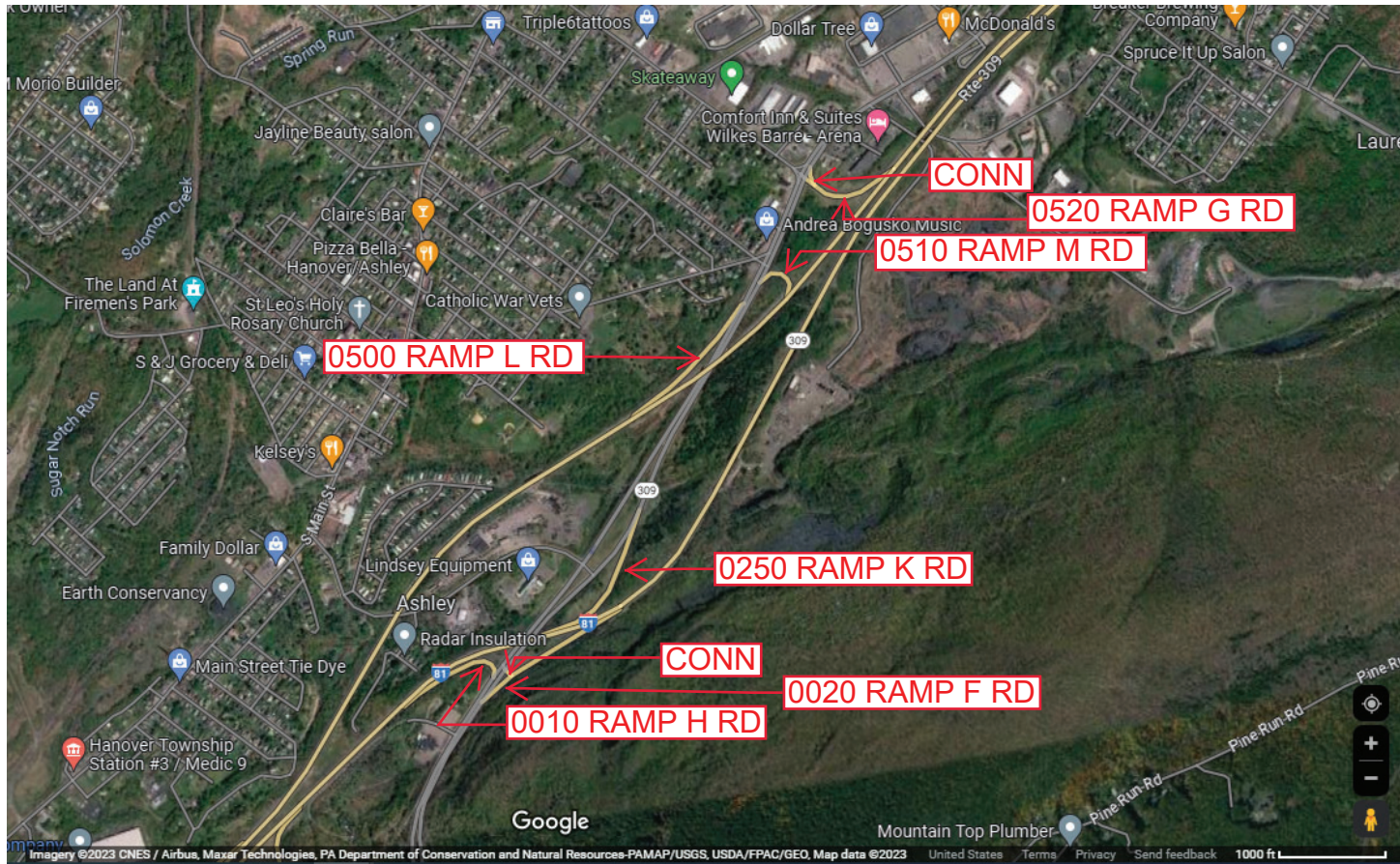
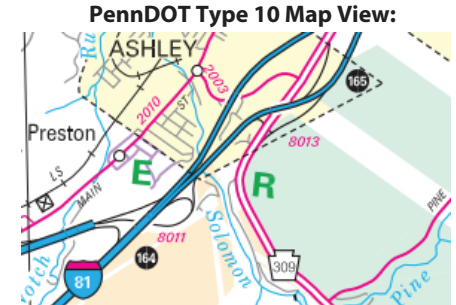
Intersecting SR's: I-81, PA 309, SR 6309 Mountain Bl & SR 2005 Blackman St

Ramp Segment Number and Ramp Segment Length Information:

Segment	Length	Segment	Length	Segment	Length	Segment	Length
0010	0629	0520	0785				
0020	1104						
0250	1074						
0500	0921						
0510	0292						

Primary Route Interchange Exit Number: 165, 165A, 165B

Secondary Route Interchange Exit Number



Last Date Modified: Jun 29, 2023

County: 40

# RMS Interchange Information

Print Form

Bureau of Maintenance & Operations  
Asset Management Division



Interchange Number: 8015

Interchange Name: W-B/BEAR CREEK INT

Intersecting SR's: I-81, PA 115 Bear Creek Bl & PA 309 N Cross Valley Ex

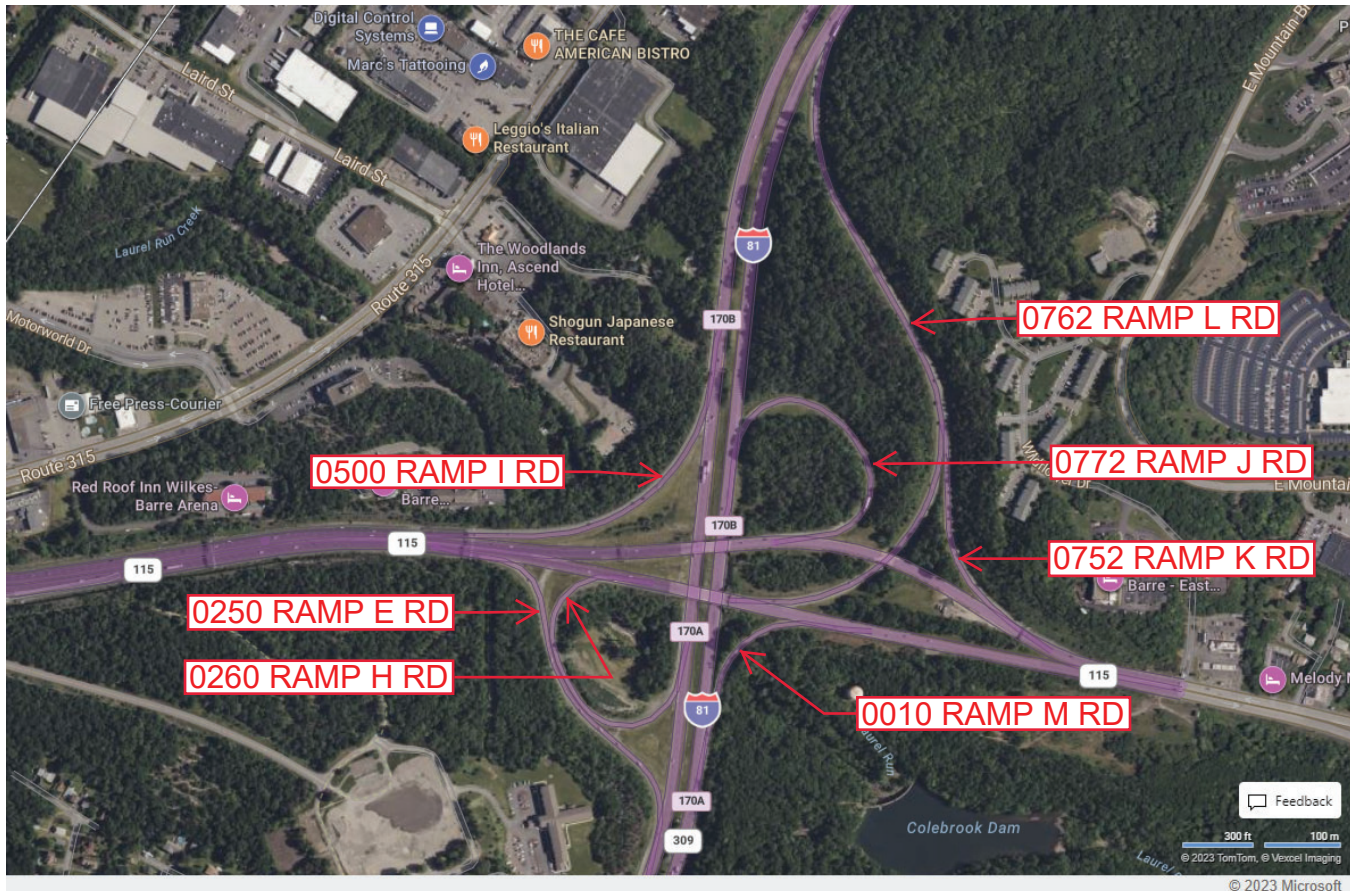
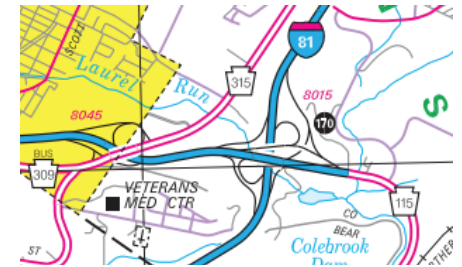
Ramp Segment Number and Ramp Segment Length Information:

Segment	Length	Segment	Length	Segment	Length	Segment	Length
0010	0602	0762	2869				
0250	1226	0772	1164				
0260	1144						
0500	1238						
0752	0719						

Primary Route Interchange Exit Number: 170A/170B

Secondary Route Interchange Exit Number

PennDOT Type 10 Map View:



Last Date Modified: Jun 29, 2023

County: 40

# RMS Interchange Information

Print Form

Interchange Number: 8017

Bureau of Maintenance & Operations  
Asset Management Division



Interchange Name: PITTSTON/DUPONT INT

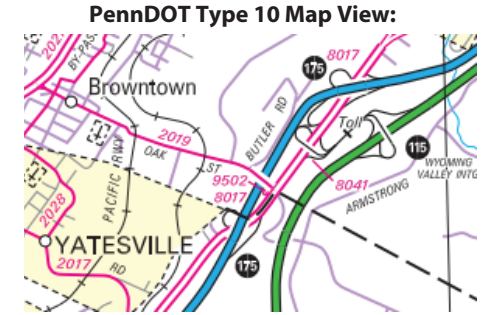
Intersecting SR's: I-81, PA 315 Dupont Hw

Ramp Segment Number and Ramp Segment Length Information:

Segment	Length	Segment	Length	Segment	Length	Segment	Length
0010	0831	0762	0671				
0250	0807						
0502	0525						
0512	0888						
0752	0858						

Primary Route Interchange Exit Number: 175/175B

Secondary Route Interchange Exit Number



Last Date Modified:

Jan 10, 2025

County: 40

# RMS Interchange Information

Print Form

Interchange Number: 8019

Bureau of Maintenance & Operations  
Asset Management Division



Interchange Name: AVOCA/AIRPORT INT

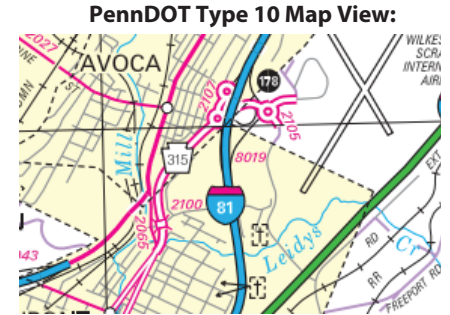
Intersecting SR's: I-81, PA 315, SR 2105 Navy Way Rd & SR 2107 William St

Ramp Segment Number and Ramp Segment Length Information:

Segment	Length	Segment	Length	Segment	Length	Segment	Length
0010	1337						
0024	0971						
0254	1245						
0514	0640						
0764	1439						

Primary Route Interchange Exit Number: 178

Secondary Route Interchange Exit Number



Feedback  
© 2023 Microsoft

Last Date Modified: Jun 30, 2023

County: 40

# RMS Interchange Information

Print Form

Interchange Number: 8021

Bureau of Maintenance & Operations  
Asset Management Division



Interchange Name: ASHLEY BORO INT

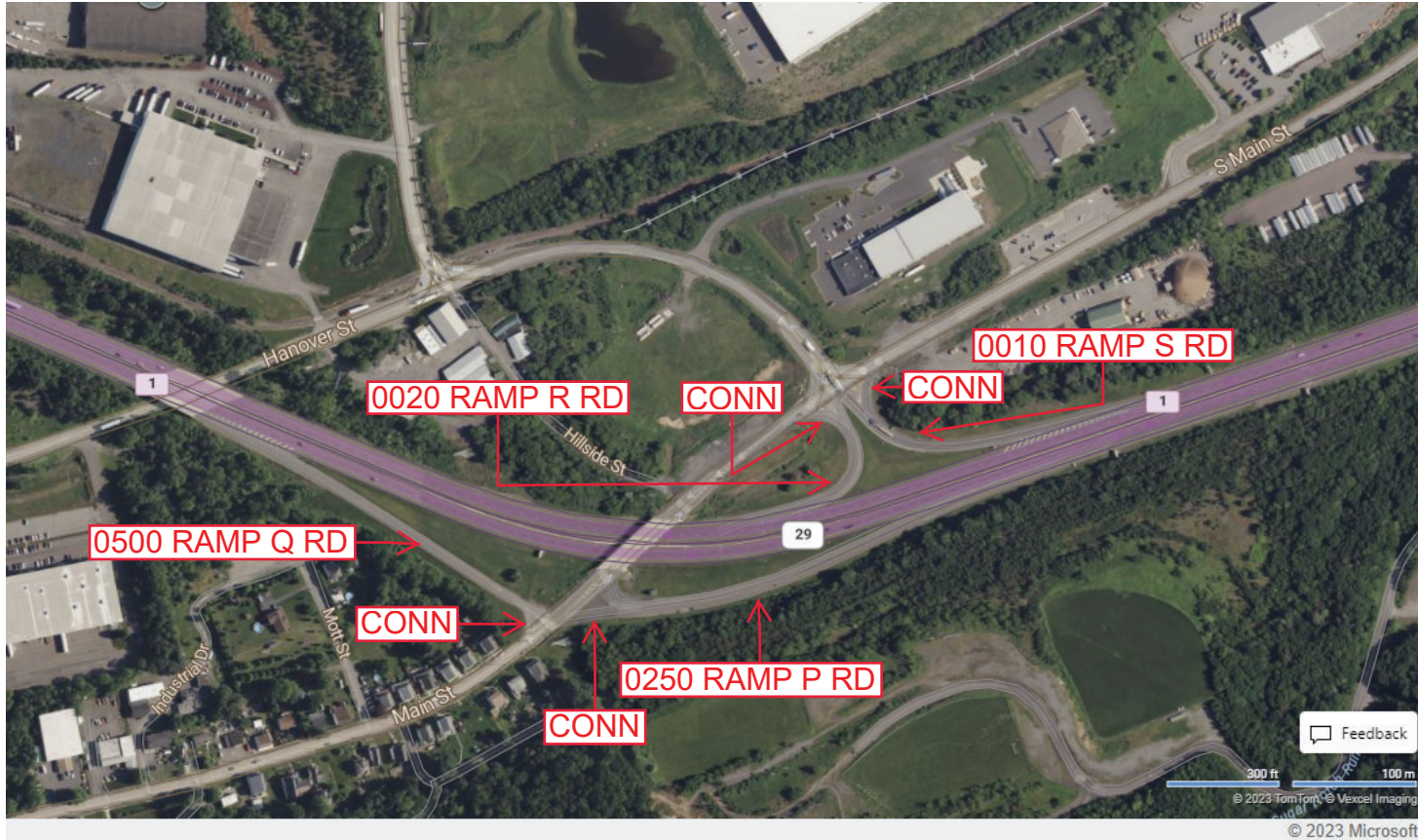
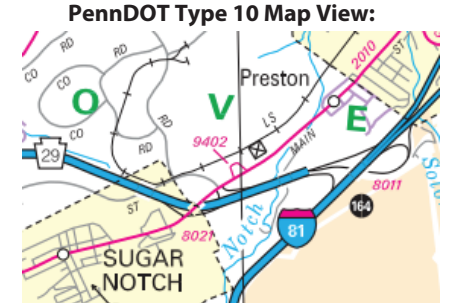
Intersecting SR's: PA 29 & SR2010 Main St

Ramp Segment Number and Ramp Segment Length Information:

Segment	Length	Segment	Length	Segment	Length	Segment	Length
0010	0528						
0020	0325						
0250	0917						
0500	0852						

Primary Route Interchange Exit Number: 1

Secondary Route Interchange Exit Number:



Last Date Modified: Jun 30, 2023

County: 40

# RMS Interchange Information

Print Form

Interchange Number: 8023

Bureau of Maintenance & Operations  
Asset Management Division



Interchange Name: ALDEN BORO INT

Intersecting SR's: PA 29 & SR 2008 Main St

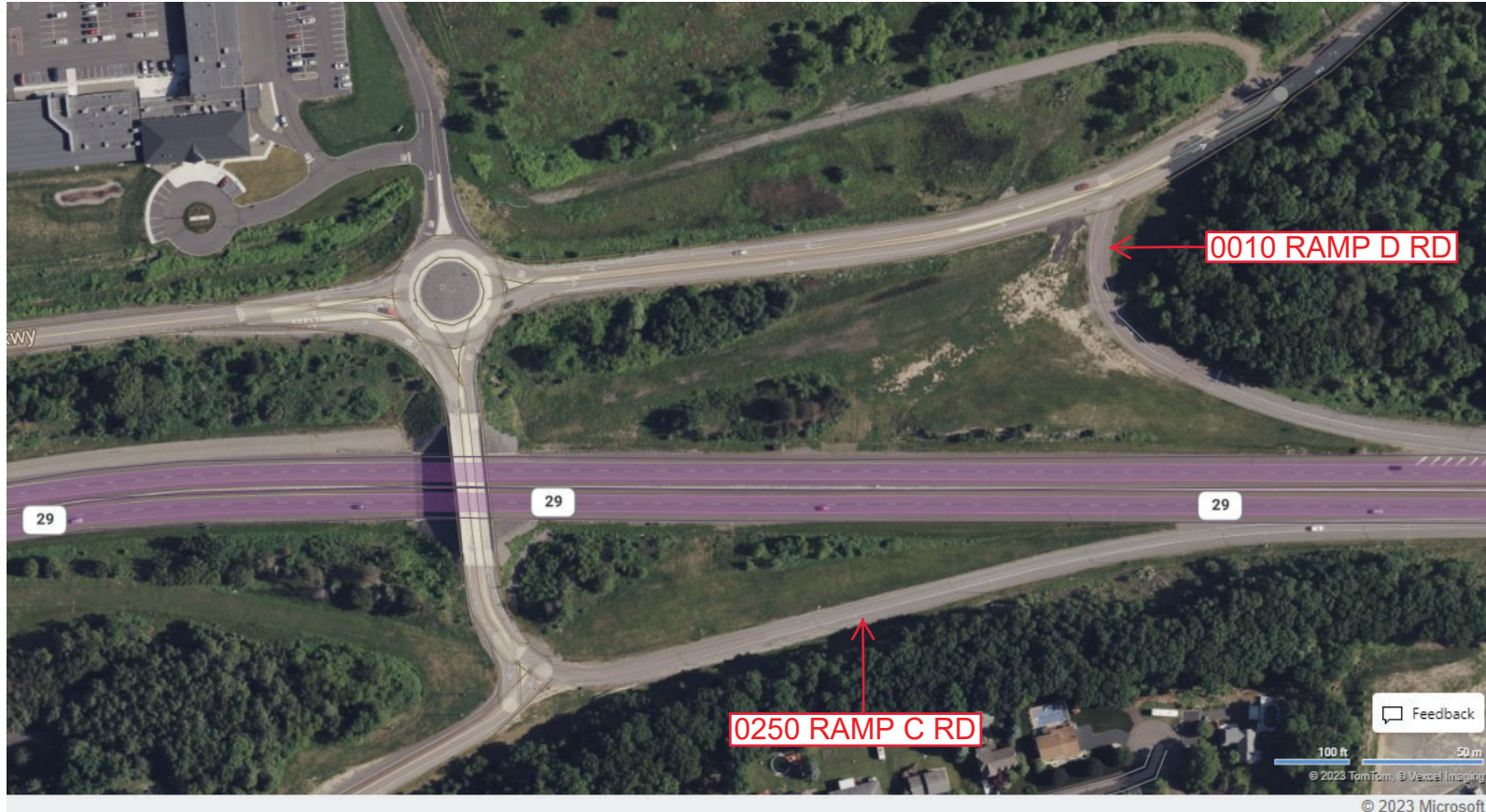
Ramp Segment Number and Ramp Segment Length Information:

Segment	Length	Segment	Length	Segment	Length	Segment	Length
0010	0641						
0250	0891						

Primary Route Interchange Exit Number: 2A

Secondary Route Interchange Exit Number

PennDOT Type 10 Map View:



0010 RAMP D RD

0250 RAMP C RD

Last Date Modified:

Jul 5, 2023

County: 40

# RMS Interchange Information

Print Form

Interchange Number: 8025

Bureau of Maintenance & Operations  
Asset Management Division



Interchange Name: NANTICOKE BORO INT

Intersecting SR's: PA 29 & SR 2002 Sans Souci Py

Ramp Segment Number and Ramp Segment Length Information:

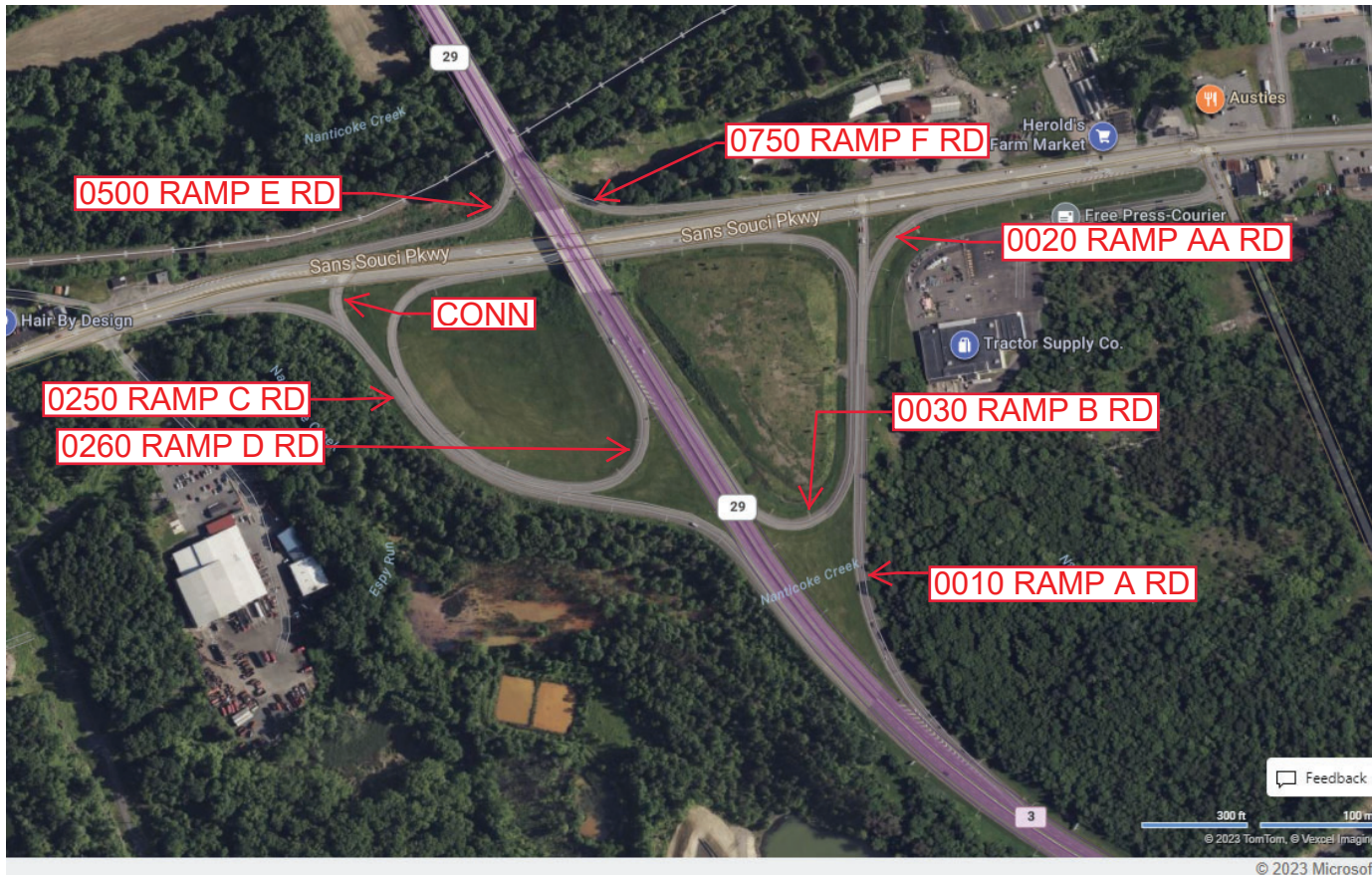
Segment	Length	Segment	Length	Segment	Length	Segment	Length
0010	1449	0500	0569				
0020	0502	0750	0645				
0030	1174						
0250	1581						
0260	1326						

Primary Route  
Interchange Exit  
Number

3

Secondary Route  
Interchange Exit  
Number

PennDOT Type 10 Map View:



Last Date Modified:

Jan 10, 2025



County: 40

# RMS Interchange Information

Print Form

Bureau of Maintenance & Operations  
Asset Management Division



Interchange Number: 8027

Interchange Name: SR 11 SH

Intersecting SR's: US 11, PA 29 Mooney Rd & Parkview Dr

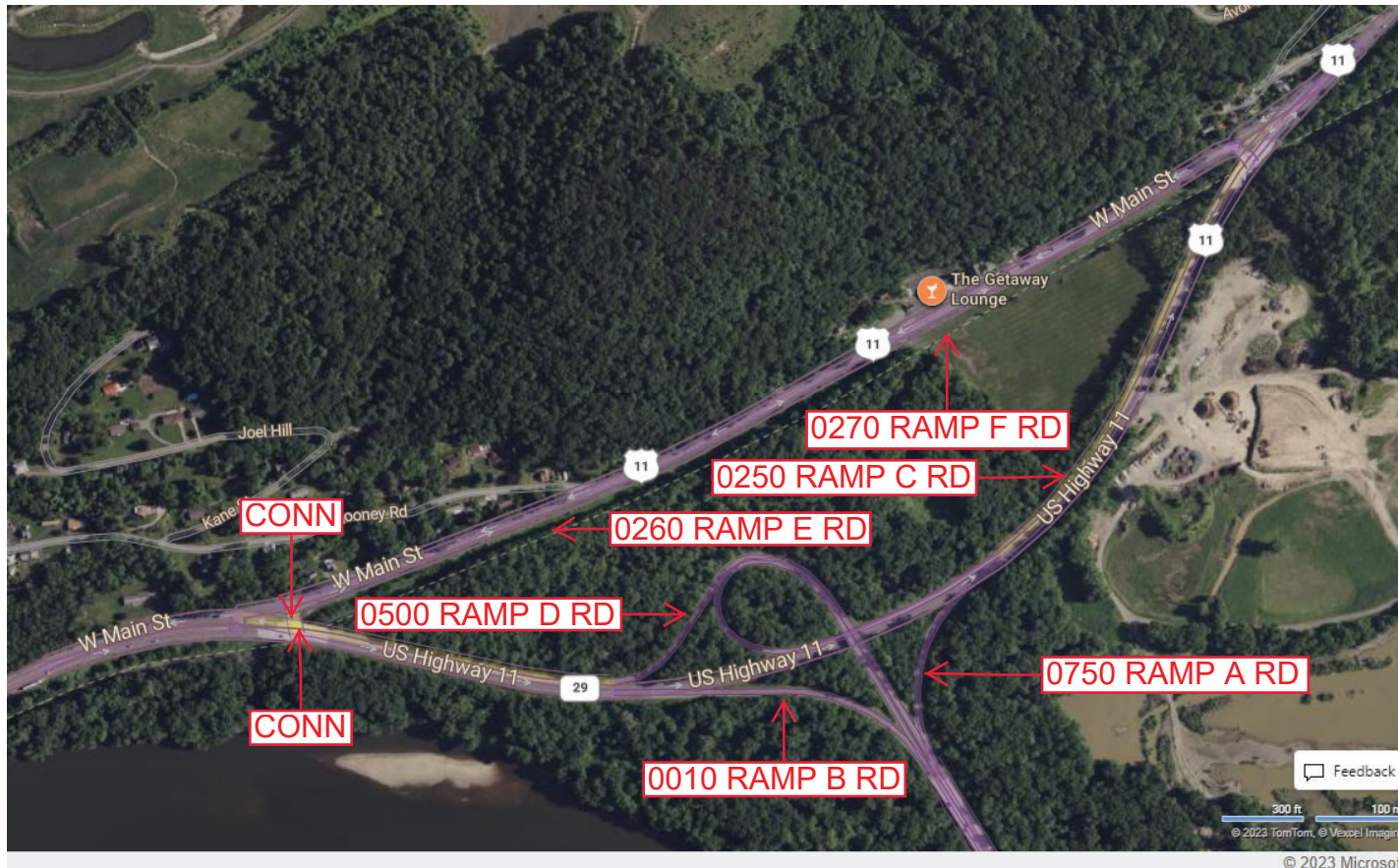
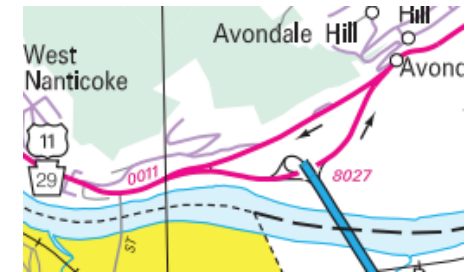
Ramp Segment Number and Ramp Segment Length Information:

Segment	Length	Segment	Length	Segment	Length	Segment	Length
0010	0978	0750	0516				
0250	3882						
0260	2120						
0270	2121						
0500	2545						

Primary Route Interchange Exit Number

Secondary Route Interchange Exit Number

PennDOT Type 10 Map View:



Last Date Modified: Jul 7, 2023

County: 40

# RMS Interchange Information

Print Form

Interchange Number: 8029

Bureau of Maintenance & Operations  
Asset Management Division



Interchange Name: NORTHAMPTON ST INT

Intersecting SR's: SR 6309 (Bus 309), SR 2007, SR 2052, SR 2054, TWP New St

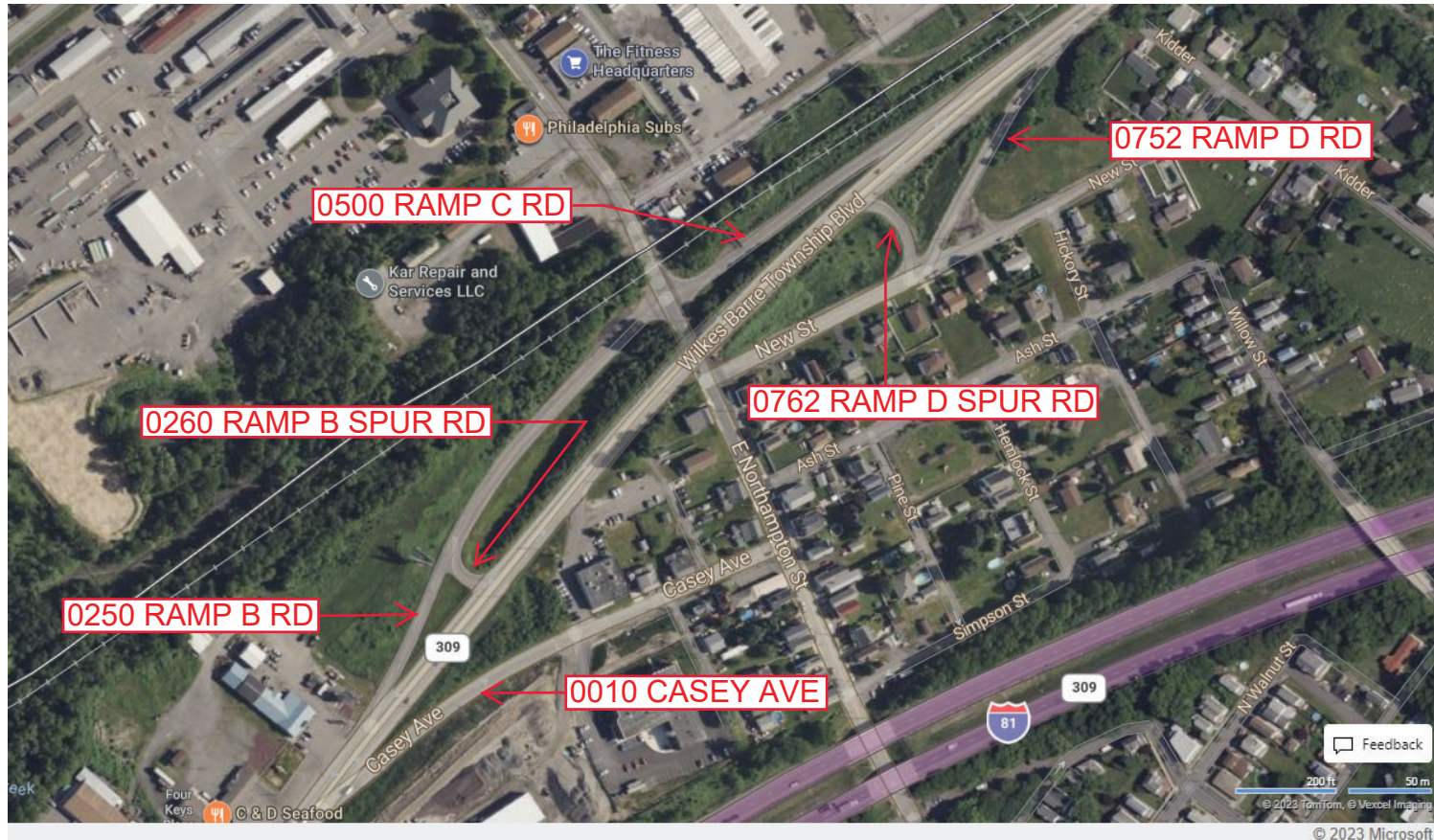
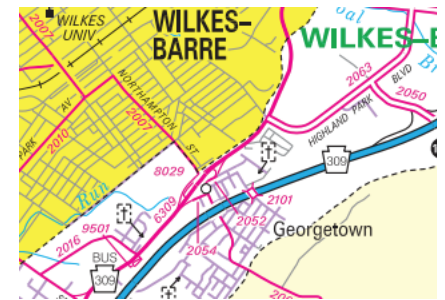
Ramp Segment Number and Ramp Segment Length Information:

Segment	Length	Segment	Length	Segment	Length	Segment	Length
0010	0489	0762	0168				
0250	0965						
0260	0741						
0500	0493						
0752	0449						

Primary Route Interchange Exit Number

Secondary Route Interchange Exit Number

PennDOT Type 10 Map View:



Last Date Modified: Jul 11, 2023

County: 40

# RMS Interchange Information

Print Form

Interchange Number: 8031

Bureau of Maintenance & Operations  
Asset Management Division



Interchange Name: PLAINS TWP INT

Intersecting SR's: PA 309 & SR 2004 River St

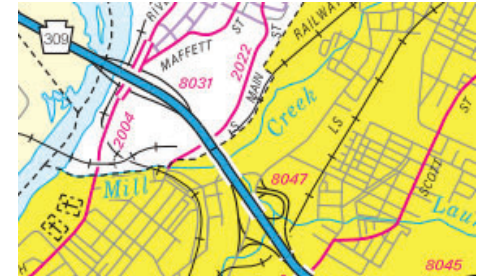
Ramp Segment Number and Ramp Segment Length Information:

Segment	Length	Segment	Length	Segment	Length	Segment	Length
0010	1731						
0250	1265						
0500	1217						
0750	0971						

Primary Route Interchange Exit Number: 3

Secondary Route Interchange Exit Number:

PennDOT Type 10 Map View:



Last Date Modified: Jul 12, 2023

County: 40

# RMS Interchange Information

Print Form

Interchange Number: 8033

Bureau of Maintenance & Operations  
Asset Management Division



Interchange Name: KINGSTON/FORTY FORT INT

Intersecting SR's: PA 309 & SR 1006 Rutter Av

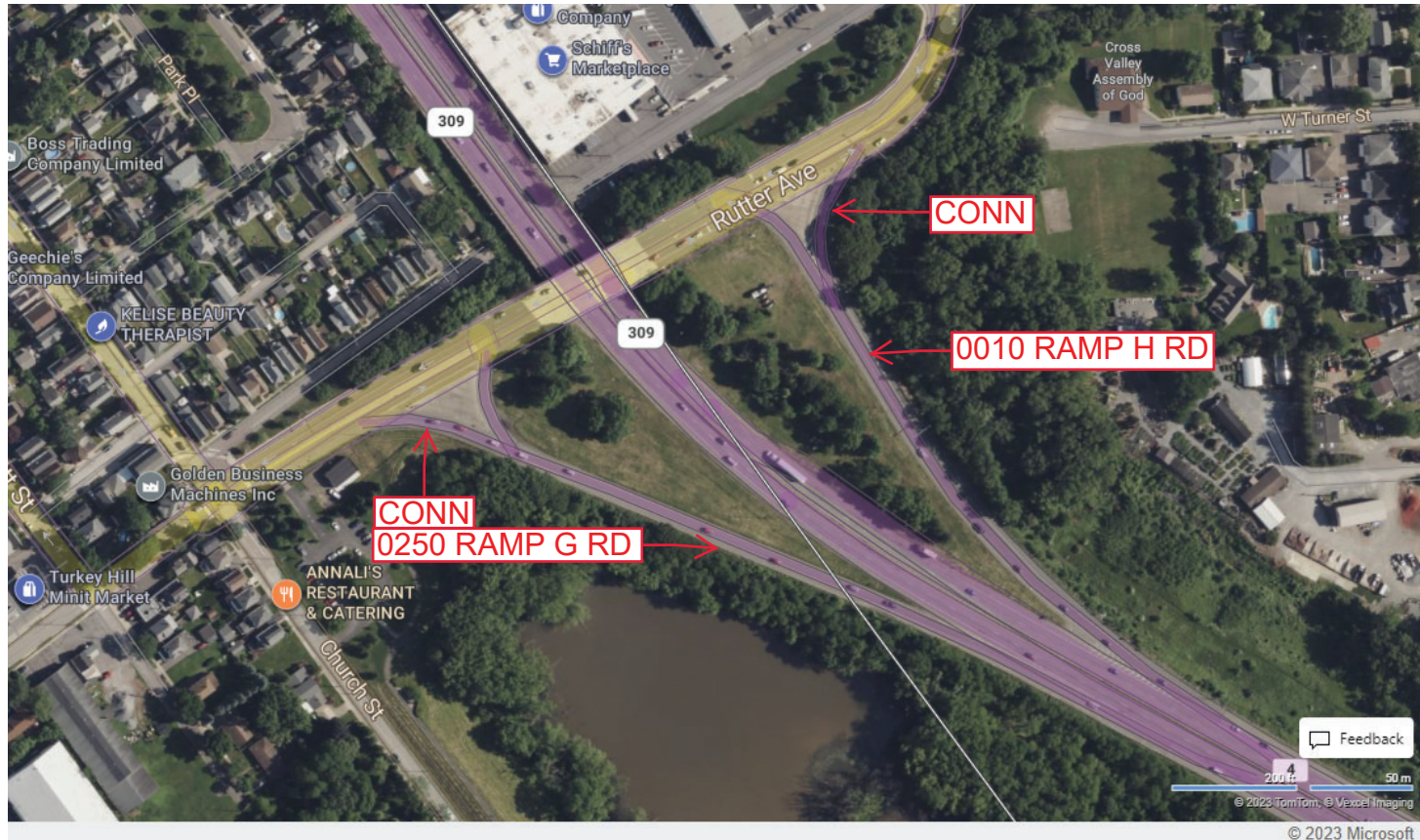
Ramp Segment Number and Ramp Segment Length Information:

Segment	Length	Segment	Length	Segment	Length	Segment	Length
0010	0886						
0250	0895						

Primary Route Interchange Exit Number: 4

Secondary Route Interchange Exit Number

PennDOT Type 10 Map View:



Last Date Modified:

Jul 13, 2023

County: 40

# RMS Interchange Information

Print Form

Interchange Number: 8035

Bureau of Maintenance & Operations  
Asset Management Division



Interchange Name: WYOMING AV INT

Intersecting SR's: US 11 Wyoming Av & PA 309 N Cross Valley Ex

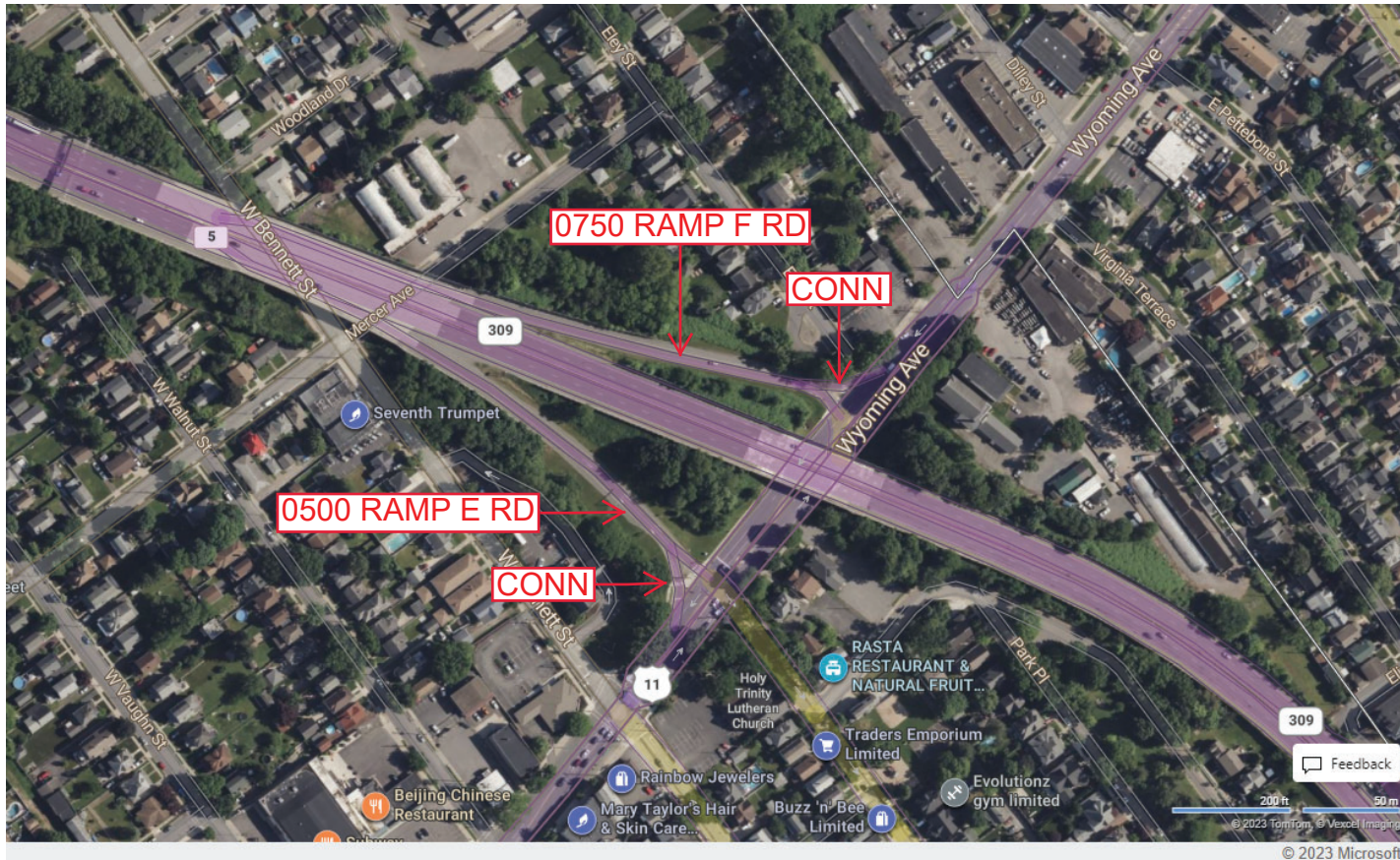
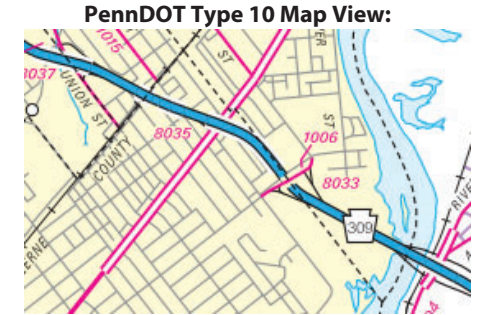
Ramp Segment Number and Ramp Segment Length Information:

Segment	Length	Segment	Length	Segment	Length	Segment	Length
0500	0525						
0750	0577						

Primary Route Interchange Exit Number

5

Secondary Route Interchange Exit Number



Last Date Modified:

Jul 13, 2023

County: 40

# RMS Interchange Information

Print Form

Interchange Number: 8037

Bureau of Maintenance & Operations  
Asset Management Division



Interchange Name: LUZERNE BORO INT

Intersecting SR's: PA 309, SR 1013 Union St & SR 1054 Evans St

Ramp Segment Number and Ramp Segment Length Information:

Segment	Length	Segment	Length	Segment	Length	Segment	Length
0010	1396						
0250	0841						

Primary Route Interchange Exit Number: 6

Secondary Route Interchange Exit Number

PennDOT Type 10 Map View:



Last Date Modified:

Jul 13, 2023

County: 40

# RMS Interchange Information

Print Form

Interchange Number: 8039

Bureau of Maintenance & Operations  
Asset Management Division



Interchange Name: COURTDALE BORO INT

Intersecting SR's: PA 309 & SR 1013 Union St

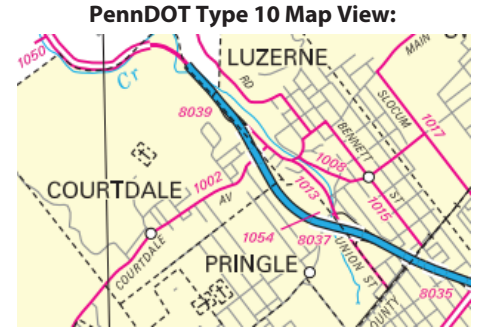
Ramp Segment Number and Ramp Segment Length Information:

Segment	Length	Segment	Length	Segment	Length	Segment	Length
0500	0879						
0750	0440						

Primary Route Interchange Exit Number

6

Secondary Route Interchange Exit Number



Last Date Modified:

Jul 13, 2023

County: 40

# RMS Interchange Information

Print Form

Interchange Number: 8041

Bureau of Maintenance & Operations  
Asset Management Division



Interchange Name: PITTSTON/DUPONT INT

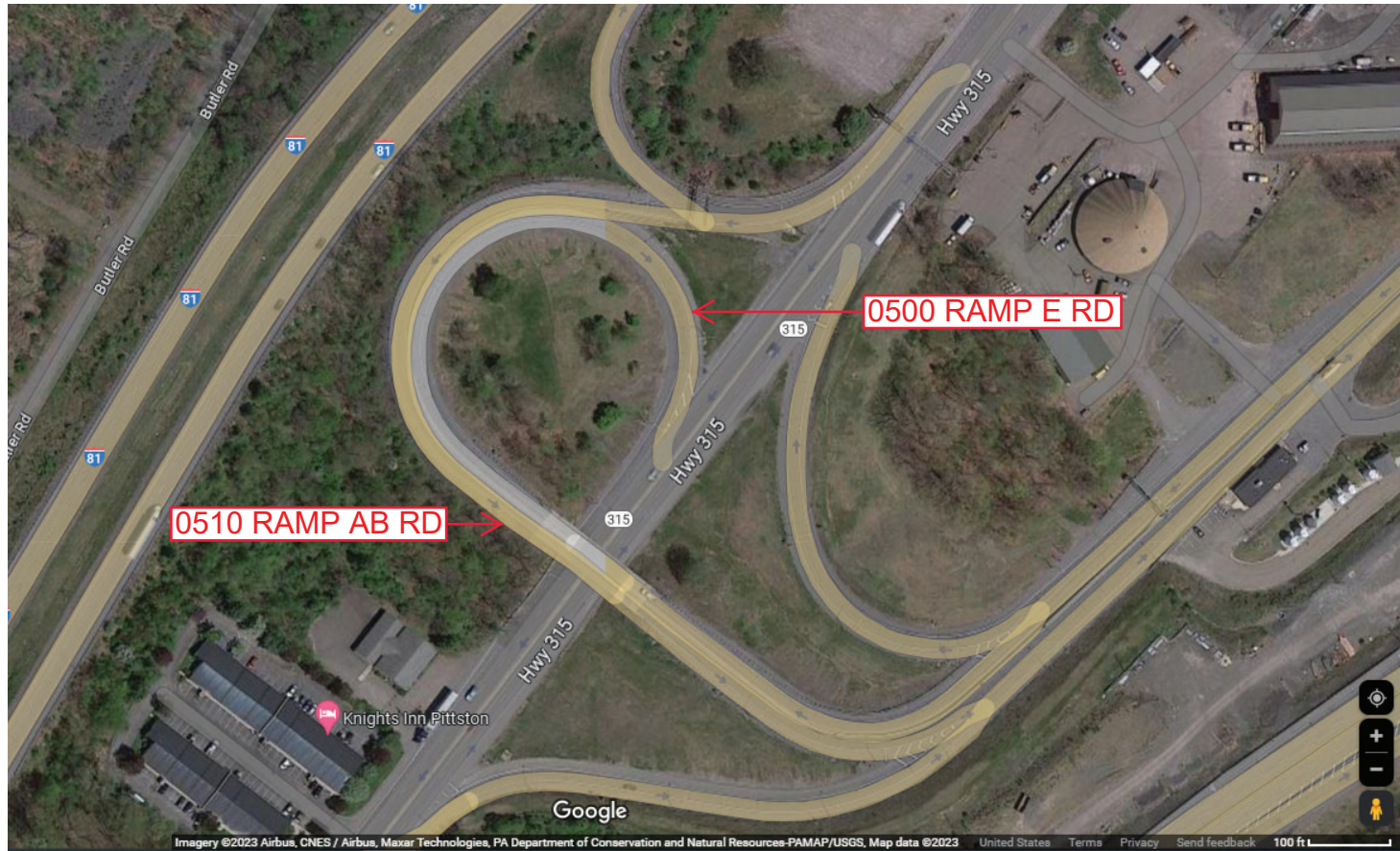
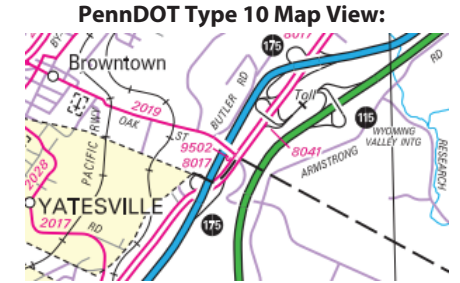
Intersecting SR's: PA 315 & Turnpike Ramp Rd

Ramp Segment Number and Ramp Segment Length Information:

Segment	Length	Segment	Length	Segment	Length	Segment	Length
0500	0825						
0510	0722						

Primary Route Interchange Exit Number: 115

Secondary Route Interchange Exit Number



Last Date Modified: Jul 13, 2023



County: 40

# RMS Interchange Information

Print Form

Interchange Number: 8043

Bureau of Maintenance & Operations  
Asset Management Division



Interchange Name: DUPONT BORO INT

Intersecting SR's: US 11 & SR 2035 Main St

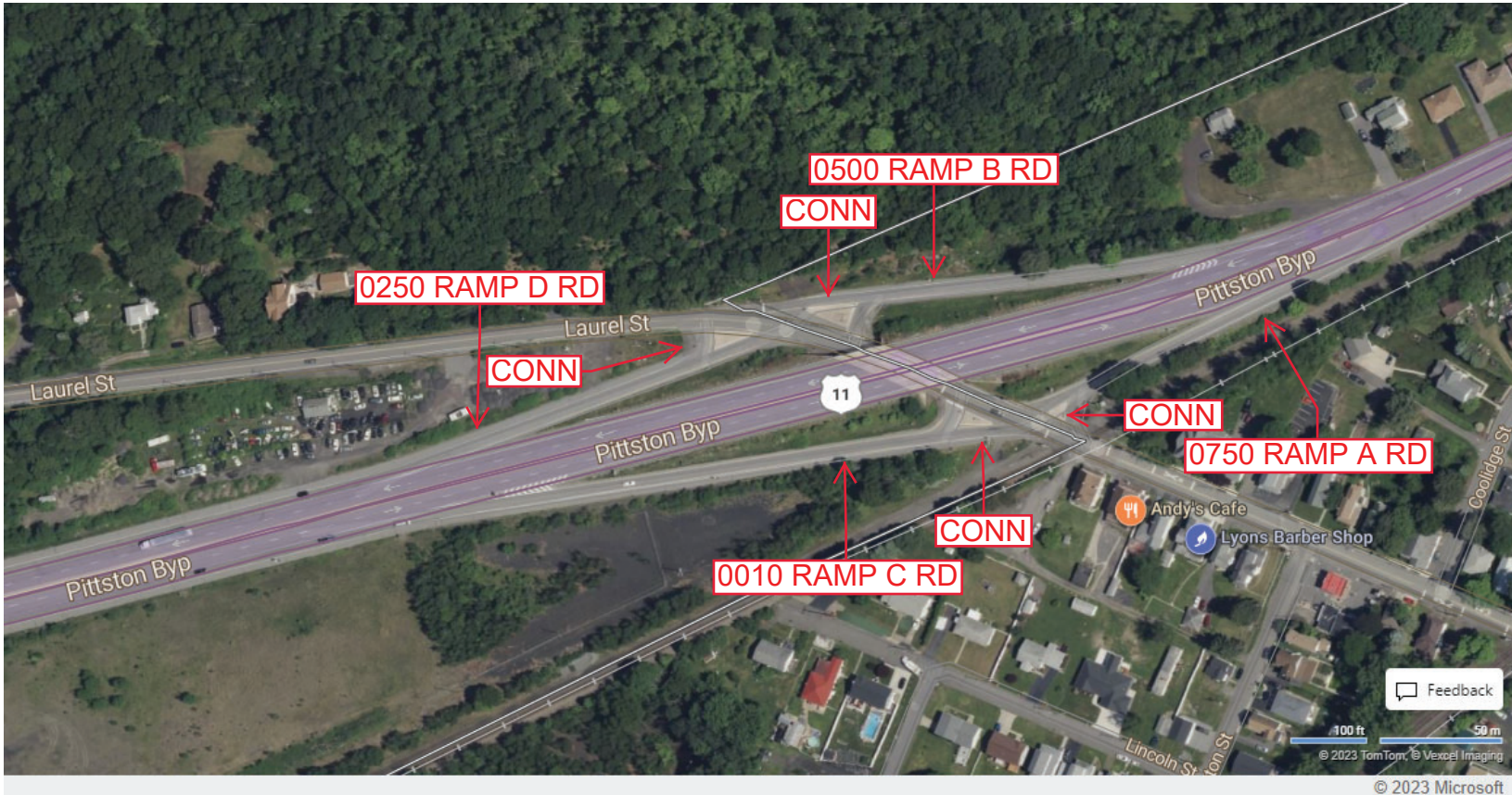
Ramp Segment Number and Ramp Segment Length Information:

Segment	Length	Segment	Length	Segment	Length	Segment	Length
0010	0574						
0250	0367						
0500	0463						
0750	0270						

Primary Route Interchange Exit Number: 50

Secondary Route Interchange Exit Number

PennDOT Type 10 Map View:



Last Date Modified:

Jul 14, 2023

County: 40

# RMS Interchange Information

Print Form

Interchange Number: 8045

Bureau of Maintenance & Operations  
Asset Management Division



Interchange Name: BUSINESS 309 INT

Intersecting SR's: PA 309, PA 315 & SR 6309 (Bus 309) Kidder St

Ramp Segment Number and Ramp Segment Length Information:

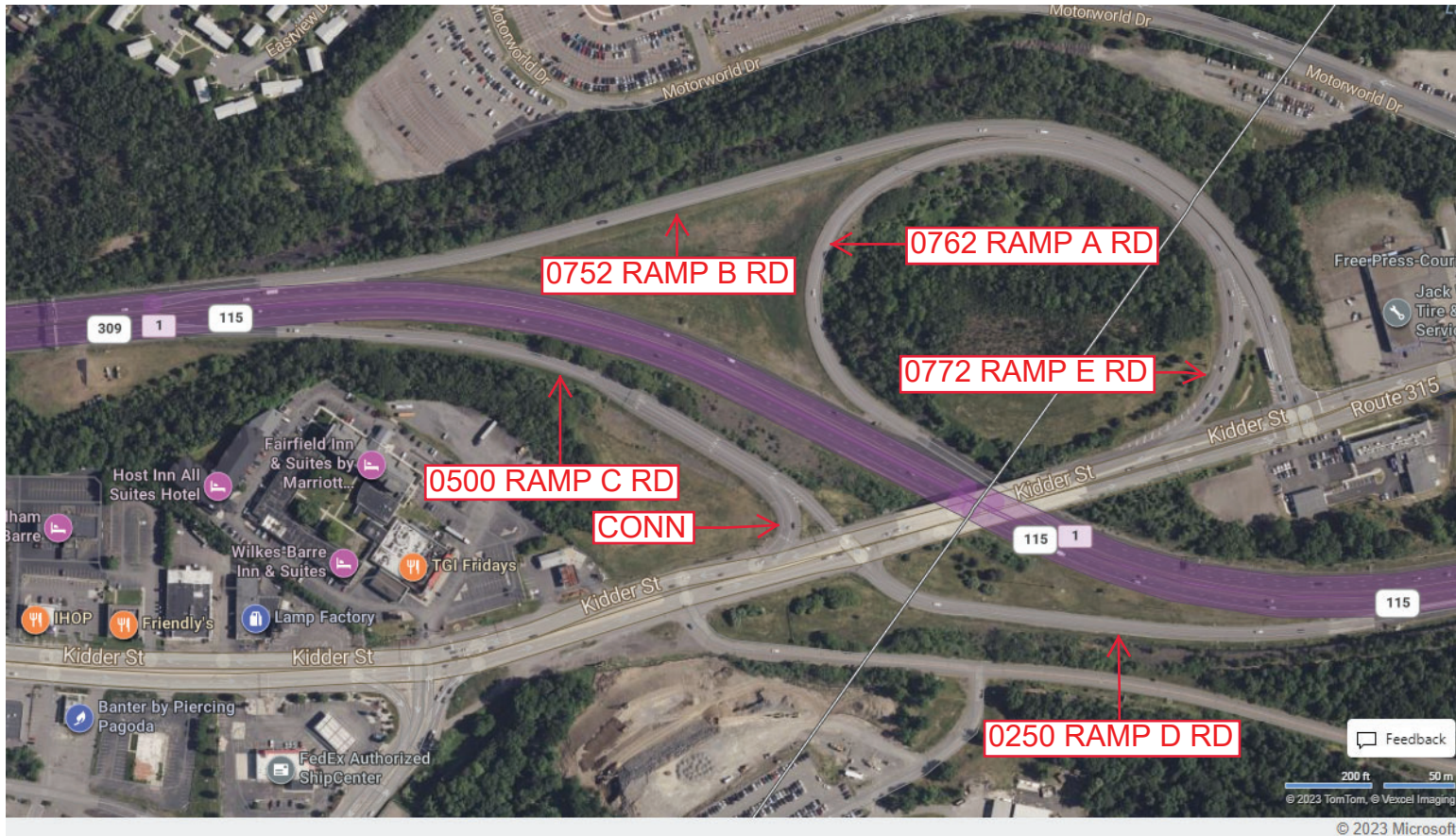
Segment	Length	Segment	Length	Segment	Length	Segment	Length
0250	1213						
0500	1366						
0752	2540						
0762	2005						
0772	0305						

Primary Route Interchange Exit Number

1

Secondary Route Interchange Exit Number

PennDOT Type 10 Map View:



Last Date Modified:

Jul 14, 2023

County: 40

# RMS Interchange Information

Print Form

Bureau of Maintenance & Operations  
Asset Management Division



Interchange Number: 8047

Interchange Name: WILKES BARRE CENTRAL CITY INT

Intersecting SR's: PA 309 N Cross Valley Ex & Wilkes-Barre BI

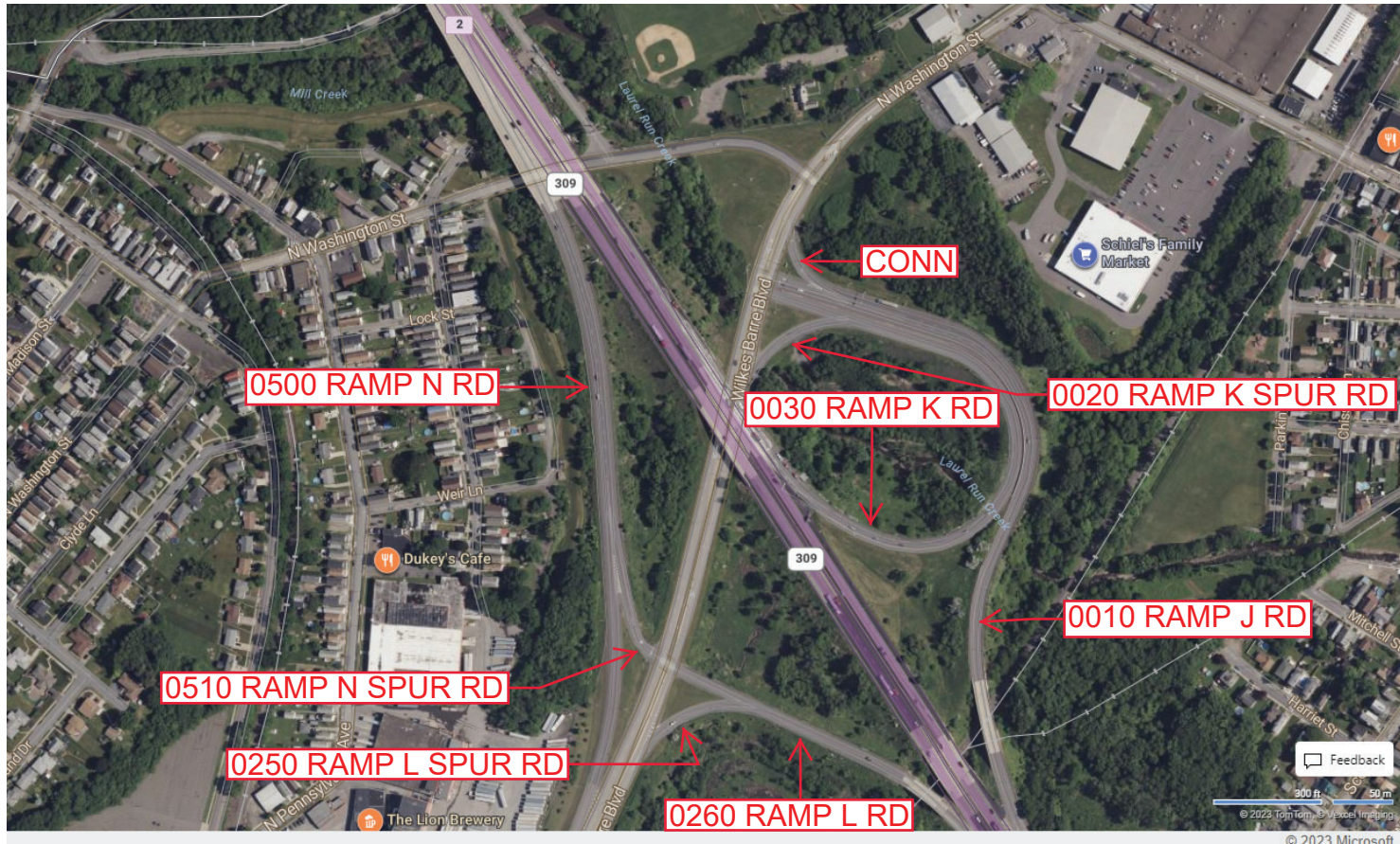
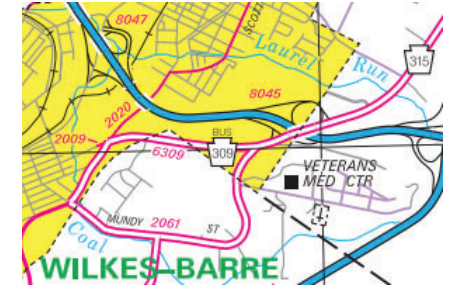
Ramp Segment Number and Ramp Segment Length Information:

Segment	Length	Segment	Length	Segment	Length	Segment	Length
0010	1976	0500	1619				
0020	0228	0510	0200				
0030	1660						
0250	0201						
0260	0936						

Primary Route Interchange Exit Number: 2

Secondary Route Interchange Exit Number

PennDOT Type 10 Map View:



Last Date Modified:

Jul 17, 2023

County: 40

# RMS Interchange Information

Print Form

Interchange Number: 8049

Bureau of Maintenance & Operations  
Asset Management Division



Interchange Name: ARTHUR GARDNER HW INT

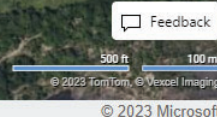
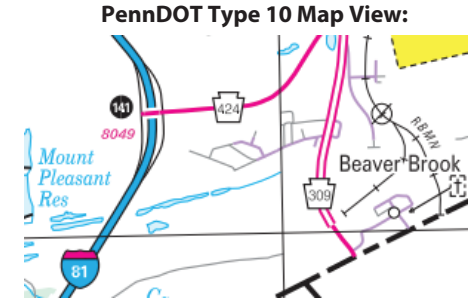
Intersecting SR's: I-81 & PA 424 Arthur Gardner Hw

Ramp Segment Number and Ramp Segment Length Information:

Segment	Length	Segment	Length	Segment	Length	Segment	Length
0010	1480						
0250	0945						
0500	0681						
0750	1400						

Primary Route Interchange Exit Number: 141

Secondary Route Interchange Exit Number



Last Date Modified: Jul 17, 2023

County: 40

# RMS Interchange Information

Print Form

Interchange Number: 8051

Bureau of Maintenance & Operations  
Asset Management Division



Interchange Name: HIGHLAND & MUNDY INT

Intersecting SR's: I-81 & SR 2050 Connector Rd

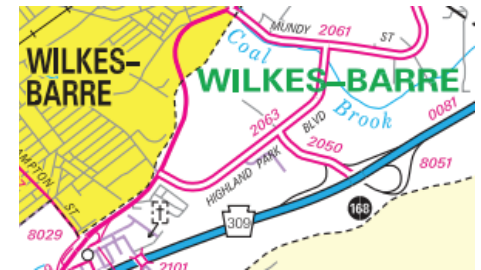
Ramp Segment Number and Ramp Segment Length Information:

Segment	Length	Segment	Length	Segment	Length	Segment	Length
0250	1756						
0500	1797						
0750	3889						
0760	3113						

Primary Route Interchange Exit Number: 168

Secondary Route Interchange Exit Number

PennDOT Type 10 Map View:



Last Date Modified: Jul 19, 2023

County: 40

# RMS Interchange Information

Print Form

Interchange Number: 8053

Bureau of Maintenance & Operations  
Asset Management Division



Interchange Name: SOUTH CROSS VALLEY EX INT

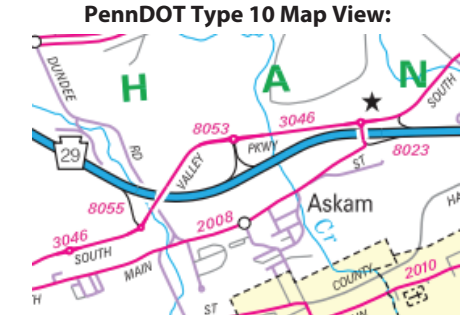
Intersecting SR's: PA 29 South Cross Valley Ex & SR 3046 South Valley Py

Ramp Segment Number and Ramp Segment Length Information:

Segment	Length	Segment	Length	Segment	Length	Segment	Length
0010	1014						
0750	1224						

Primary Route Interchange Exit Number: 2B

Secondary Route Interchange Exit Number



Last Date Modified:

Jul 19, 2023

County: 40

# RMS Interchange Information

Print Form

Interchange Number: 8055

Bureau of Maintenance & Operations  
Roadway Management Division



Interchange Name: SOUTH CROSS VALLEY EX

Intersecting SR's: SR 29 South Cross Valley Ex & SR3046 South Valley Py

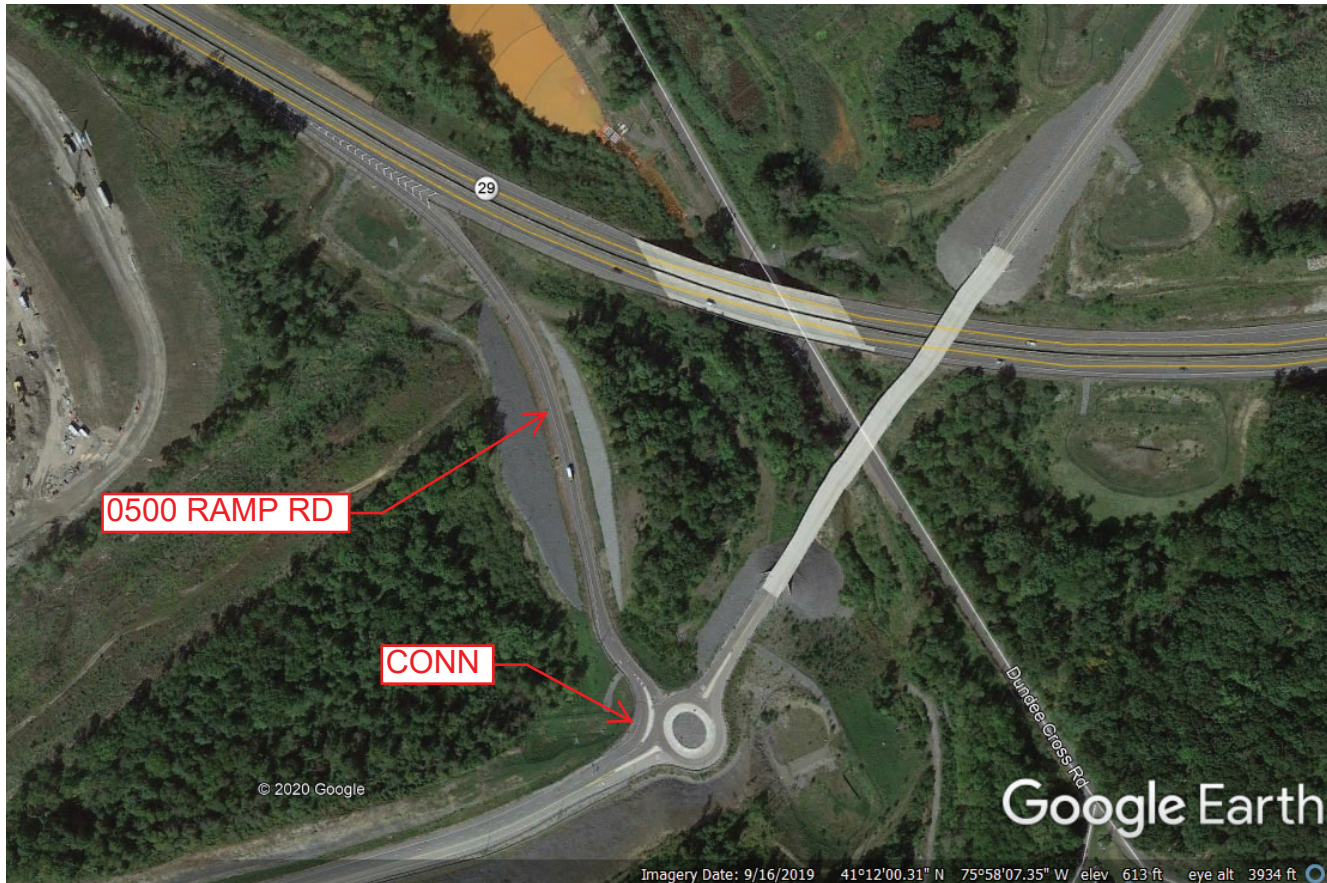
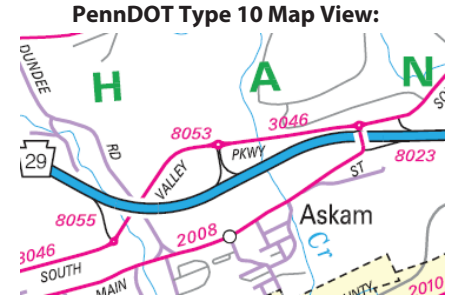
Ramp Segment Number and Ramp Segment Length Information:

Segment	Length	Segment	Length	Segment	Length	Segment	Length
0500	1073						

Primary Route Interchange Exit Number

2

Secondary Route Interchange Exit Number



Last Date Modified:

May 18, 2020

County: 40

# RMS Interchange Information

Print Form

Interchange Number: 9101

Bureau of Maintenance & Operations  
Asset Management Division



Interchange Name: PA 93 & SR 3026 WYE

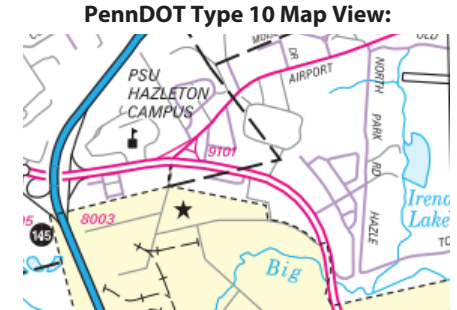
Intersecting SR's: PA 93 Susquehanna Av & SR 3026 Airport Beltway Rd

Ramp Segment Number and Ramp Segment Length Information:

Segment	Length	Segment	Length	Segment	Length	Segment	Length
0010	0223						

Primary Route Interchange Exit Number

Secondary Route Interchange Exit Number



Last Date Modified: Jul 19, 2023



County: 40

# RMS Interchange Information

Print Form

Interchange Number: 9103

Bureau of Maintenance & Operations  
Asset Management Division



Interchange Name: PA 309 WYE

Intersecting SR's: PA 309 Memorial Hw & Tunkannock Hw

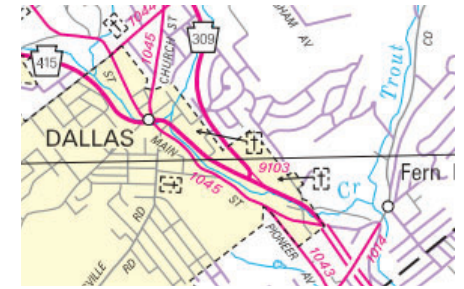
Ramp Segment Number and Ramp Segment Length Information:

Segment	Length	Segment	Length	Segment	Length	Segment	Length
0010	0240						

Primary Route Interchange Exit Number

Secondary Route Interchange Exit Number

PennDOT Type 10 Map View:



Last Date Modified: Jul 19, 2023

County: 40

# RMS Interchange Information

Print Form

Interchange Number: 9201

Bureau of Maintenance & Operations  
Asset Management Division



Interchange Name: REST STOP

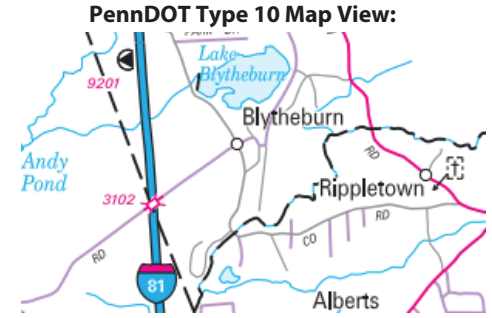
Intersecting SR's: I-81 Southbound

Ramp Segment Number and Ramp Segment Length Information:

Segment	Length	Segment	Length	Segment	Length	Segment	Length
0010	1397						
0020	1320						

Primary Route Interchange Exit Number

Secondary Route Interchange Exit Number



Last Date Modified: Jul 20, 2023

County: 40

# RMS Interchange Information

Print Form

Interchange Number: 9202

Bureau of Maintenance & Operations  
Asset Management Division



Interchange Name: REST STOP

Intersecting SR's: I-81 Northbound

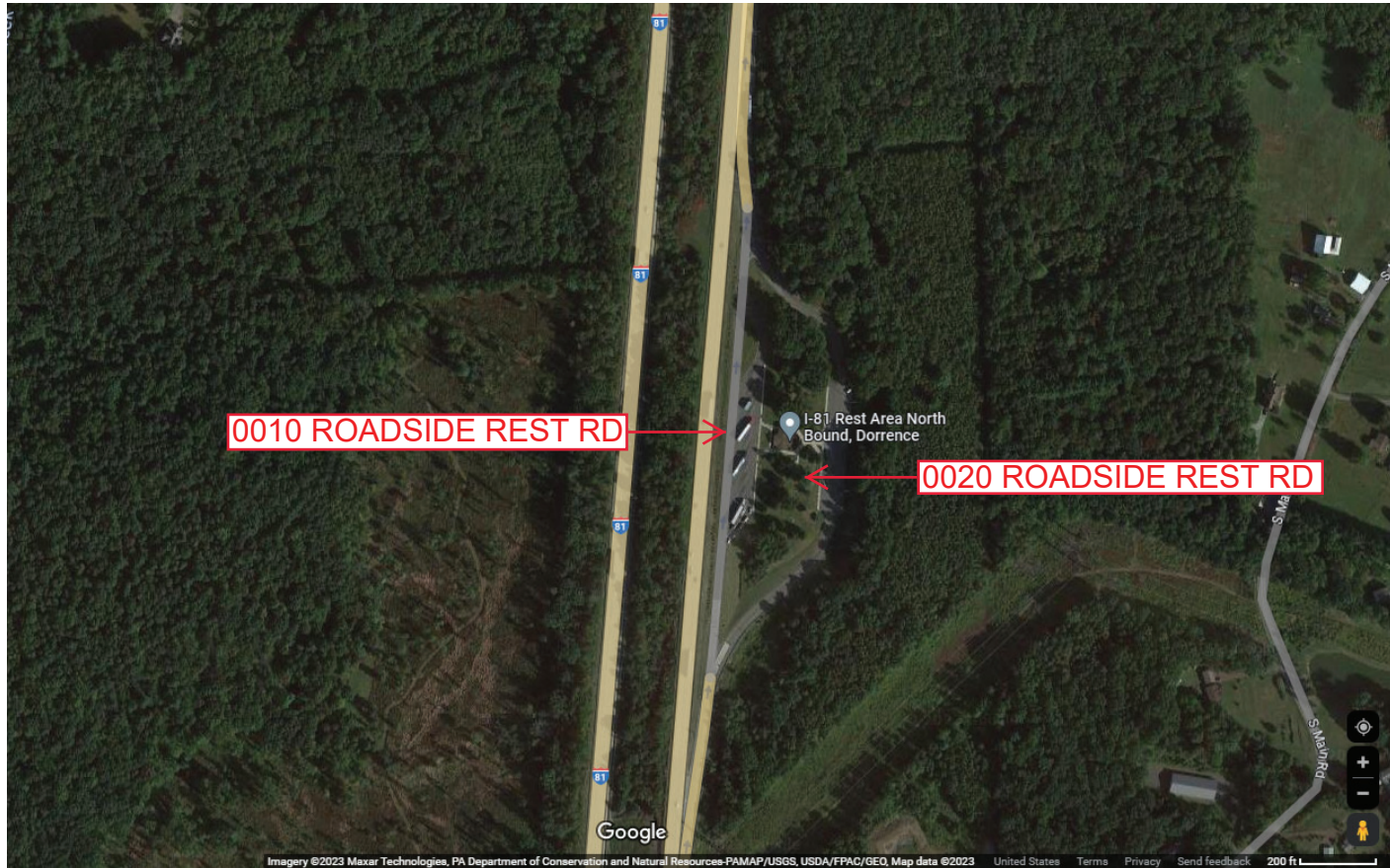
Ramp Segment Number and Ramp Segment Length Information:

Segment	Length	Segment	Length	Segment	Length	Segment	Length
0010	1587						
0020	1217						

Primary Route Interchange Exit Number

Secondary Route Interchange Exit Number

PennDOT Type 10 Map View:



Last Date Modified: Jul 20, 2023

County: 40

# RMS Interchange Information

Bureau of Maintenance & Operations  
Asset Management Division

Print Form



Interchange Number: 9204

Interchange Name: REST STOP

Intersecting SR's: I-80 Eastbound

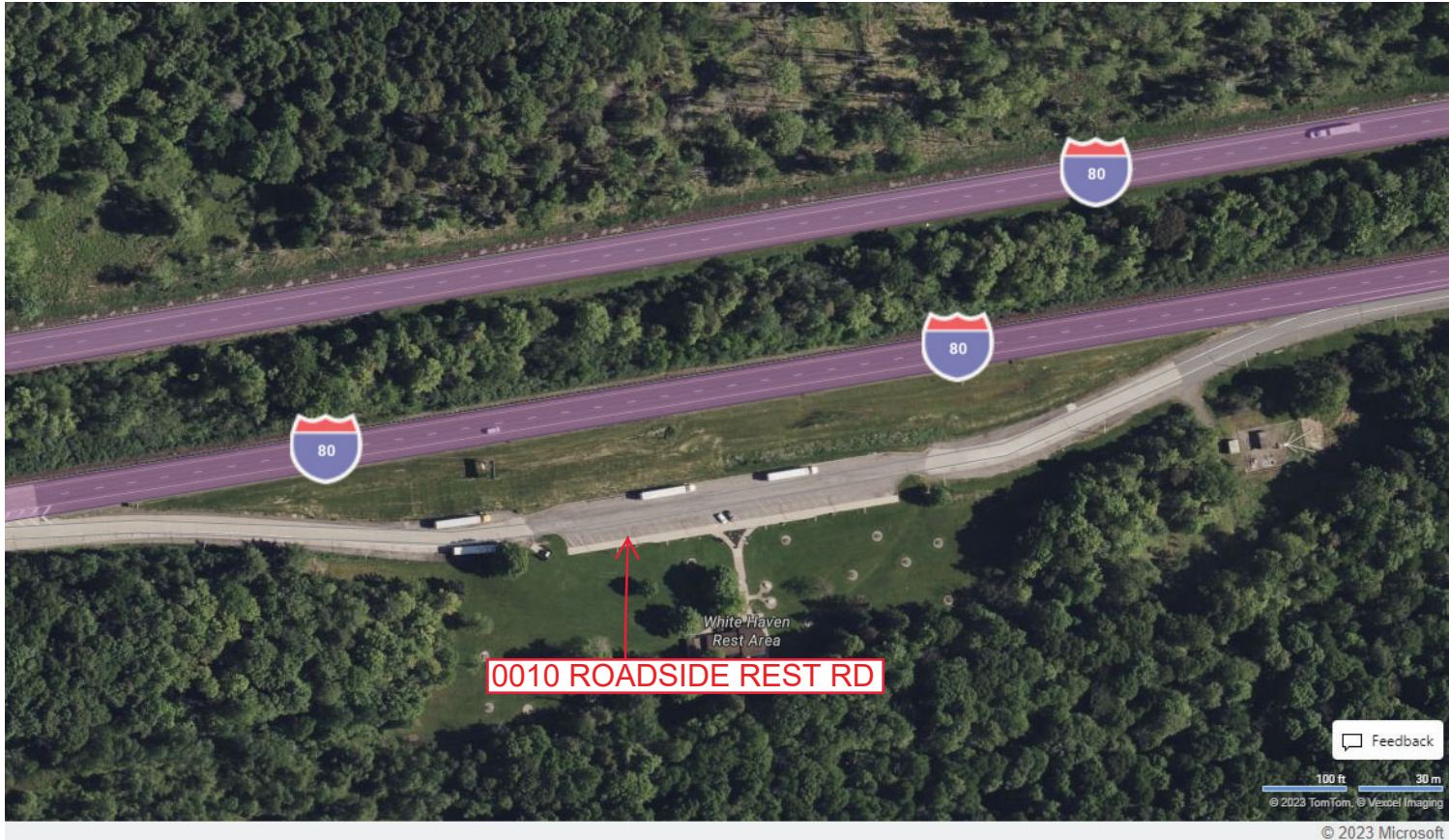
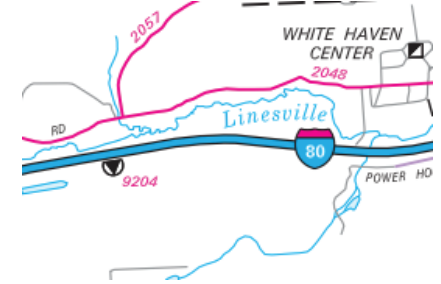
Ramp Segment Number and Ramp Segment Length Information:

Segment	Length	Segment	Length	Segment	Length	Segment	Length
0010	1481						

Primary Route Interchange Exit Number

Secondary Route Interchange Exit Number

PennDOT Type 10 Map View:



Feedback

100 ft 30 m  
© 2023 TomTom, © Vexcel Imaging

© 2023 Microsoft

Last Date Modified: Jul 20, 2023

County: 40

# RMS Interchange Information

Print Form

Interchange Number: 9302

Bureau of Maintenance & Operations  
Asset Management Division



Interchange Name: TRUCK ESCAPE RAMP

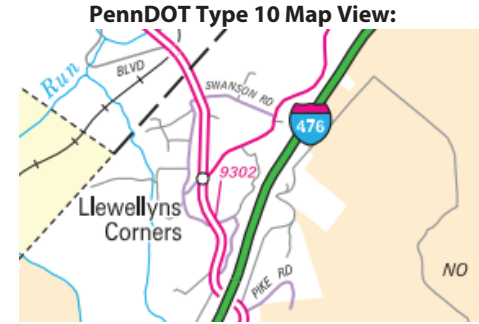
Intersecting SR's: PA 115 Bear Creek Bl

Ramp Segment Number and Ramp Segment Length Information:

Segment	Length	Segment	Length	Segment	Length	Segment	Length
0010	0374						

Primary Route Interchange Exit Number

Secondary Route Interchange Exit Number



Last Date Modified: Jul 20, 2023

County: 40

# RMS Interchange Information

Print Form

Interchange Number: 9304

Bureau of Maintenance & Operations  
Asset Management Division



Interchange Name: TRUCK ESCAPE RAMP

Intersecting SR's: PA 115 Bear Creek BI

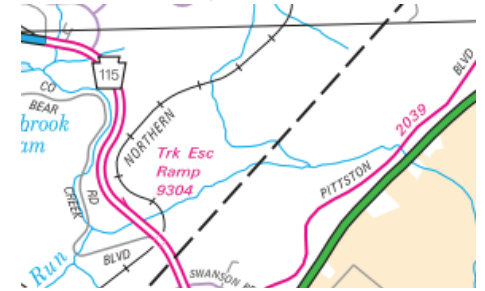
Ramp Segment Number and Ramp Segment Length Information:

Segment	Length	Segment	Length	Segment	Length	Segment	Length
0010	0403						

Primary Route  
Interchange Exit  
Number

Secondary Route  
Interchange Exit  
Number

PennDOT Type 10 Map View:



Feedback

100 ft 30 m  
© 2023 TomTom, © Vexcel Imaging

© 2023 Microsoft

Last Date Modified:

Jul 21, 2023

County: 40

# RMS Interchange Information

Print Form

Interchange Number: 9402

Bureau of Maintenance & Operations  
Asset Management Division



Interchange Name: PARK & RIDE

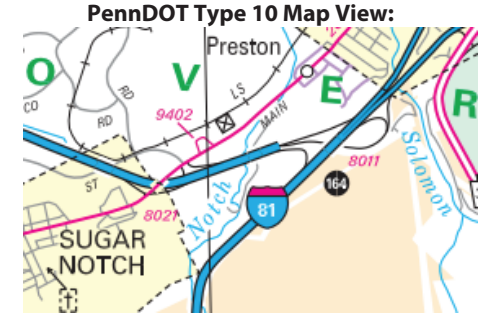
Intersecting SR's: SR 2010 Main St

Ramp Segment Number and Ramp Segment Length Information:

Segment	Length	Segment	Length	Segment	Length	Segment	Length
0010	0400						

Primary Route Interchange Exit Number

Secondary Route Interchange Exit Number



Last Date Modified: Jul 21, 2023

County: 40

# RMS Interchange Information

Print Form

Interchange Number: 9403

Bureau of Maintenance & Operations  
Asset Management Division



Interchange Name: US 11 JUGHANDLE

Intersecting SR's: US 11 & Aldi Mall Entrance Rd

Ramp Segment Number and Ramp Segment Length Information:

Segment	Length	Segment	Length	Segment	Length	Segment	Length
0010	0318						

Primary Route  
Interchange Exit  
Number

Secondary Route  
Interchange Exit  
Number

PennDOT Type 10 Map View:



Last Date Modified:

Jul 21, 2023



County: 40

# RMS Interchange Information

Print Form

Interchange Number: 9406

Bureau of Maintenance & Operations  
Asset Management Division



Interchange Name: DORRANCE PARK & RIDE

Intersecting SR's: SR 3007 Blue Ridge Tr

Ramp Segment Number and Ramp Segment Length Information:

Segment	Length	Segment	Length	Segment	Length	Segment	Length
0010	0769						

Primary Route Interchange Exit Number

Secondary Route Interchange Exit Number

PennDOT Type 10 Map View:



Feedback

100 ft 50 m  
© 2023 TomTom, © Vexcel Imaging

© 2023 Microsoft

Last Date Modified:

Jul 24, 2023

County: 40

# RMS Interchange Information

Print Form

Interchange Number: 9408

Bureau of Maintenance & Operations  
Asset Management Division



Interchange Name: BROAD ST & CANDO EX WYE

Intersecting SR's: PA 93 Broad St & PA 924 Cando Ex

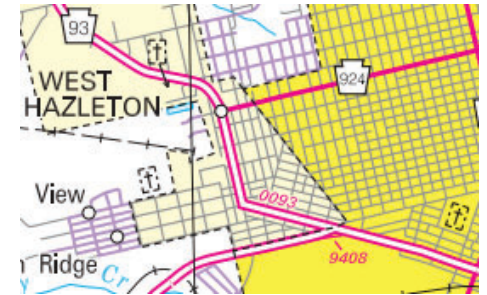
Ramp Segment Number and Ramp Segment Length Information:

Segment	Length	Segment	Length	Segment	Length	Segment	Length
0010	0304						

Primary Route  
Interchange Exit  
Number

Secondary Route  
Interchange Exit  
Number

PennDOT Type 10 Map View:



Last Date Modified: Jul 25, 2023

County: 40

# RMS Interchange Information

Print Form

Interchange Number: 9501

Bureau of Maintenance & Operations  
Asset Management Division



Interchange Name: PARK & LOCK

Intersecting SR's: SR 6309 (Bus 309) Wilkes-Barre Twp BI & SR 2016 Casey Av

Ramp Segment Number and Ramp Segment Length Information:

Segment	Length	Segment	Length	Segment	Length	Segment	Length
0010	0777						

Primary Route Interchange Exit Number

Secondary Route Interchange Exit Number

PennDOT Type 10 Map View:



Last Date Modified: Jul 21, 2023

County: 40

# RMS Interchange Information

Print Form

Interchange Number: 9502

Bureau of Maintenance & Operations  
Asset Management Division



Interchange Name: PITTSTON PARK & RIDE

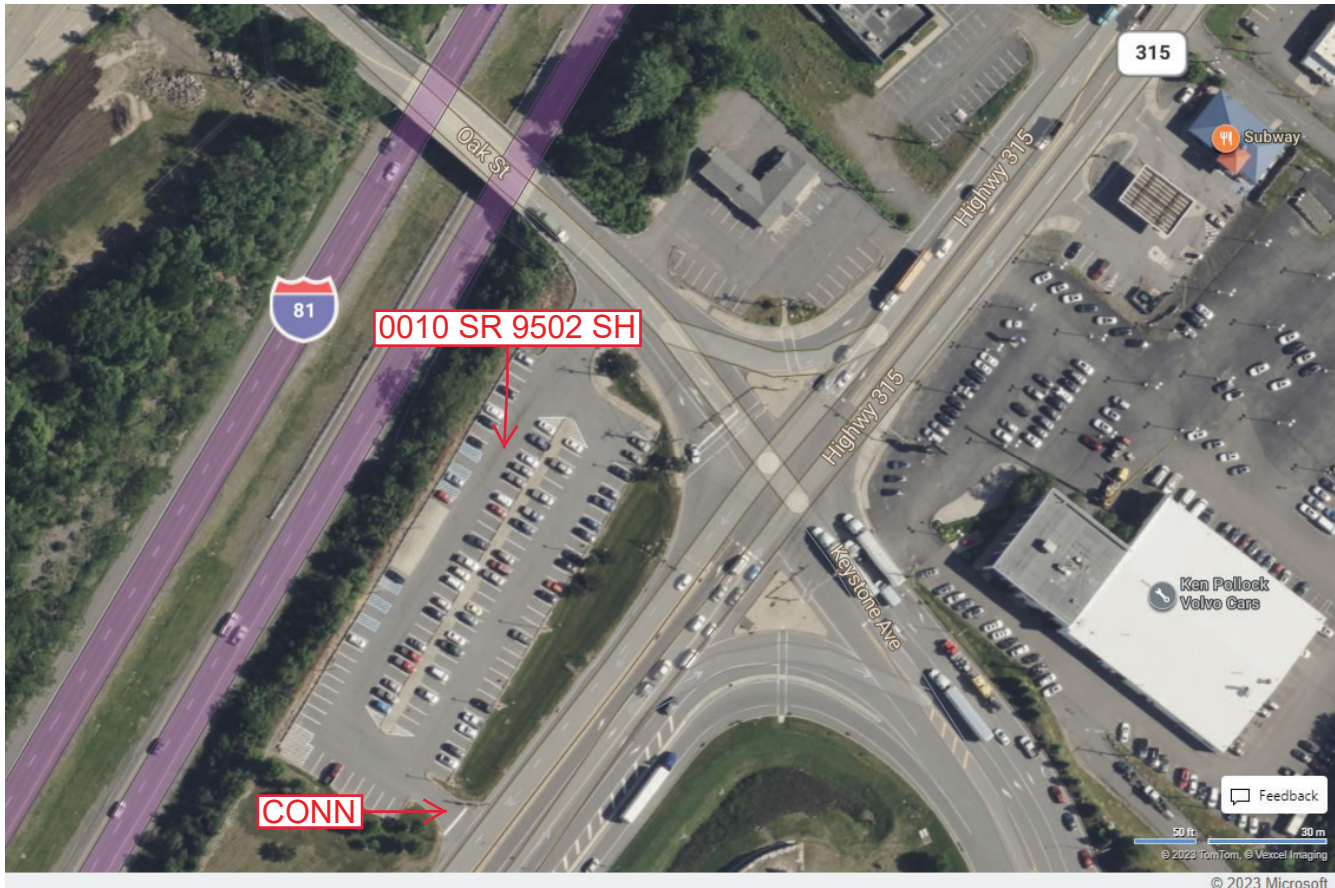
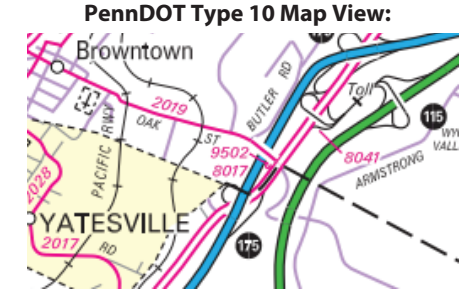
Intersecting SR's: SR 2019 Oak St

Ramp Segment Number and Ramp Segment Length Information:

Segment	Length	Segment	Length	Segment	Length	Segment	Length
0010	0458						

Primary Route Interchange Exit Number

Secondary Route Interchange Exit Number



Last Date Modified: Jul 24, 2023

County: 40

# RMS Interchange Information

Print Form

Interchange Number: 9505

Bureau of Maintenance & Operations  
Asset Management Division



Interchange Name: BLACK RIDGE PARK & RIDE

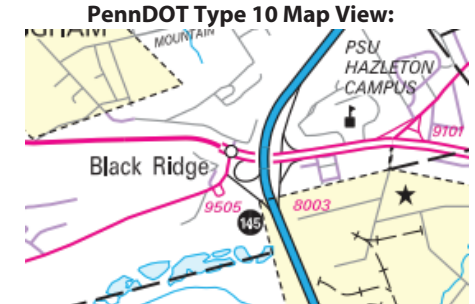
Intersecting SR's: SR 3020 Tomhicken Rd

Ramp Segment Number and Ramp Segment Length Information:

Segment	Length	Segment	Length	Segment	Length	Segment	Length
0010	0419						

Primary Route Interchange Exit Number

Secondary Route Interchange Exit Number



Last Date Modified:

Sep 6, 2023

County: 40

# RMS Interchange Information

Bureau of Maintenance & Operations  
Asset Management Division

Print Form



Interchange Number: 9506

Interchange Name: PARK & RIDE

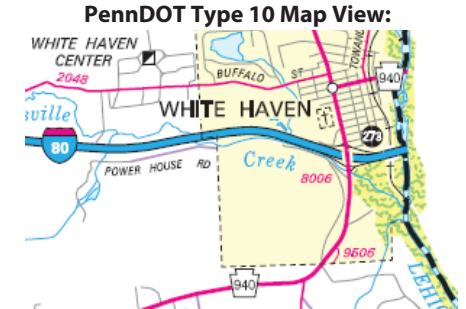
Intersecting SR's: PA 940 Foster Av

Ramp Segment Number and Ramp Segment Length Information:

Segment	Length	Segment	Length	Segment	Length	Segment	Length
0010	1054						

Primary Route Interchange Exit Number

Secondary Route Interchange Exit Number



Feedback

100 ft 30 m

© 2023 TomTom, © Vexcel Imaging

© 2023 Microsoft

Last Date Modified:

Jul 25, 2023