

County: 51

RMS Interchange Information

Print Form

Interchange Number: 8002

Bureau of Maintenance & Operations
Asset Management Division



Interchange Name: GREENTOWN INT

Intersecting SR's: I-84 & PA 507 Wallenpaupack Rd

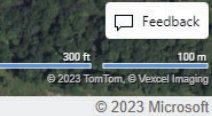
Ramp Segment Number and Ramp Segment Length Information:

Segment	Length	Segment	Length	Segment	Length	Segment	Length
0010	0888						
0250	0876						
0500	0893						
0750	1932						

Primary Route Interchange Exit Number: 20

Secondary Route Interchange Exit Number

PennDOT Type 10 Map View:



Last Date Modified: Jul 25, 2023

County: 51

RMS Interchange Information

Print Form

Interchange Number: 8004

Bureau of Maintenance & Operations
Asset Management Division



Interchange Name: PROMISE LAND INT

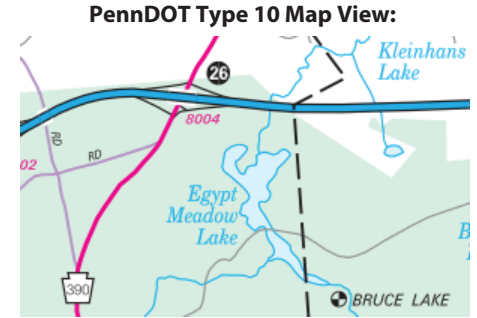
Intersecting SR's: I-84 & PA 390 Pormise Land Rd

Ramp Segment Number and Ramp Segment Length Information:

Segment	Length	Segment	Length	Segment	Length	Segment	Length
0010	0893						
0250	1105						
0500	1007						
0750	1014						

Primary Route Interchange Exit Number: 26

Secondary Route Interchange Exit Number



Last Date Modified: Jul 26, 2023

County: 51

RMS Interchange Information

Print Form

Interchange Number: 8006

Bureau of Maintenance & Operations
Asset Management Division



Interchange Name: BLOOMING GROVE INT

Intersecting SR's: I-84 & PA 402

Ramp Segment Number and Ramp Segment Length Information:

Segment	Length	Segment	Length	Segment	Length	Segment	Length
0010	0959						
0250	0879						
0500	1163						
0750	0723						

Primary Route Interchange Exit Number: 30

Secondary Route Interchange Exit Number

PennDOT Type 10 Map View:



Feedback

200 ft 50 m
© 2023 TomTom, © Vexcel Imaging
© 2023 Microsoft

Last Date Modified:

Jul 26, 2023

County: 51

RMS Interchange Information

Print Form

Interchange Number: 8008

Bureau of Maintenance & Operations
Asset Management Division



Interchange Name: LORDS VALLEY INT

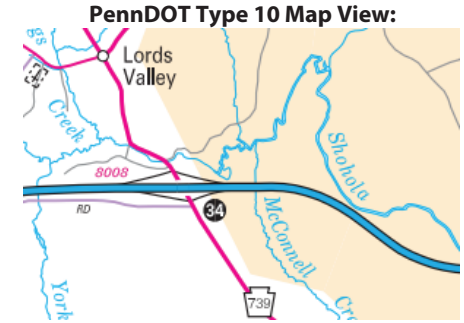
Intersecting SR's: I-84 & PA 739

Ramp Segment Number and Ramp Segment Length Information:

Segment	Length	Segment	Length	Segment	Length	Segment	Length
0010	1163						
0250	1335						
0500	1214						
0750	0596						

Primary Route Interchange Exit Number: 34

Secondary Route Interchange Exit Number



Last Date Modified:

Jan 7, 2025

County: 51

RMS Interchange Information

Print Form

Interchange Number: 8010

Bureau of Maintenance & Operations
Asset Management Division



Interchange Name: MILFORD INT

Intersecting SR's: I-84 & US 6 G.A.R. Hw

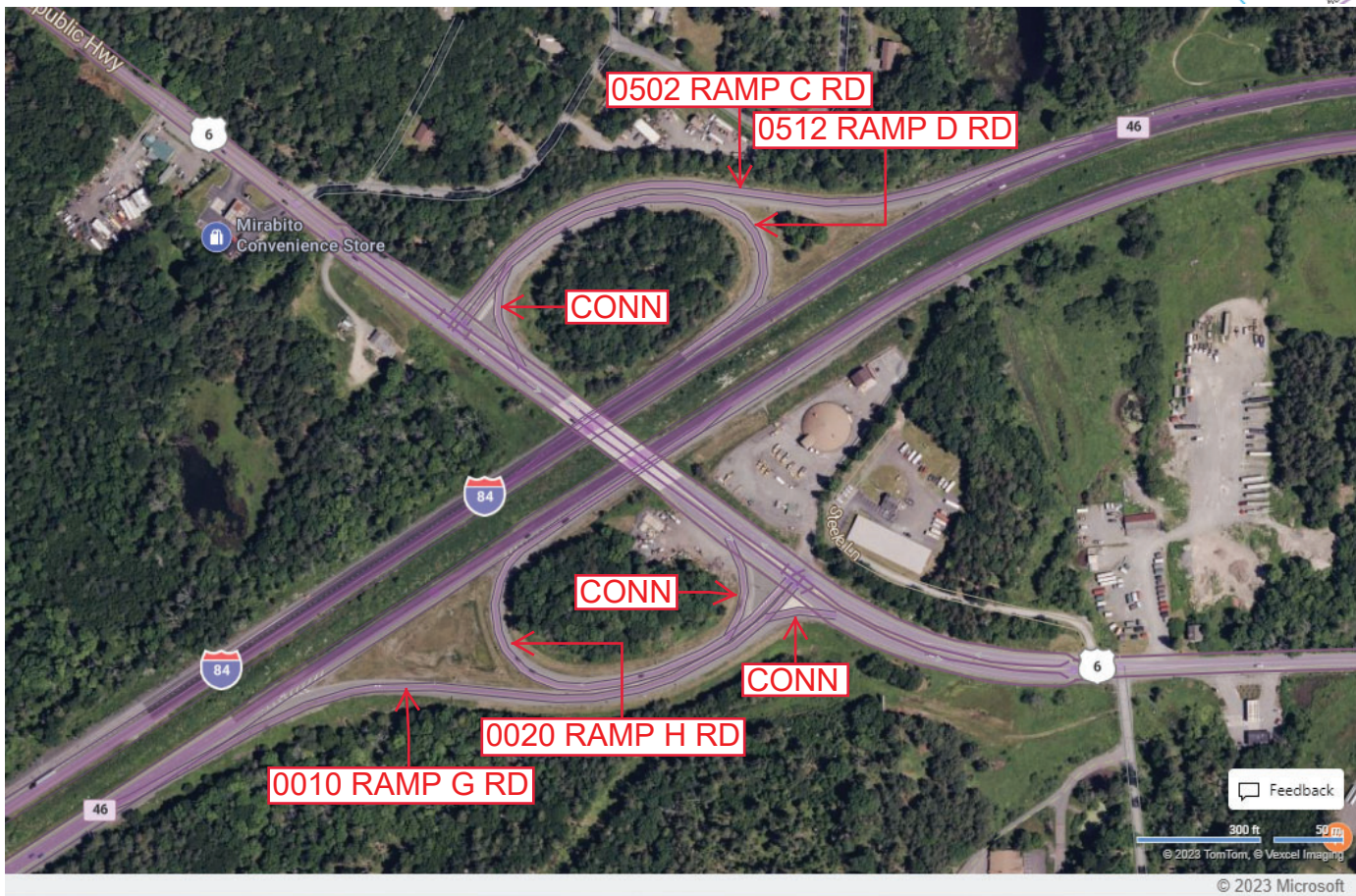
Ramp Segment Number and Ramp Segment Length Information:

Segment	Length	Segment	Length	Segment	Length	Segment	Length
0010	1240						
0020	1008						
0502	1287						
0512	1066						

Primary Route Interchange Exit Number: 46

Secondary Route Interchange Exit Number:

PennDOT Type 10 Map View:



Last Date Modified: Jan 7, 2025

County: 51

RMS Interchange Information

Print Form

Interchange Number: 8012

Bureau of Maintenance & Operations
Asset Management Division



Interchange Name: MATAMORAS INT

Intersecting SR's: I-84 & US 6 Constitution Av & Pennsylvania Av

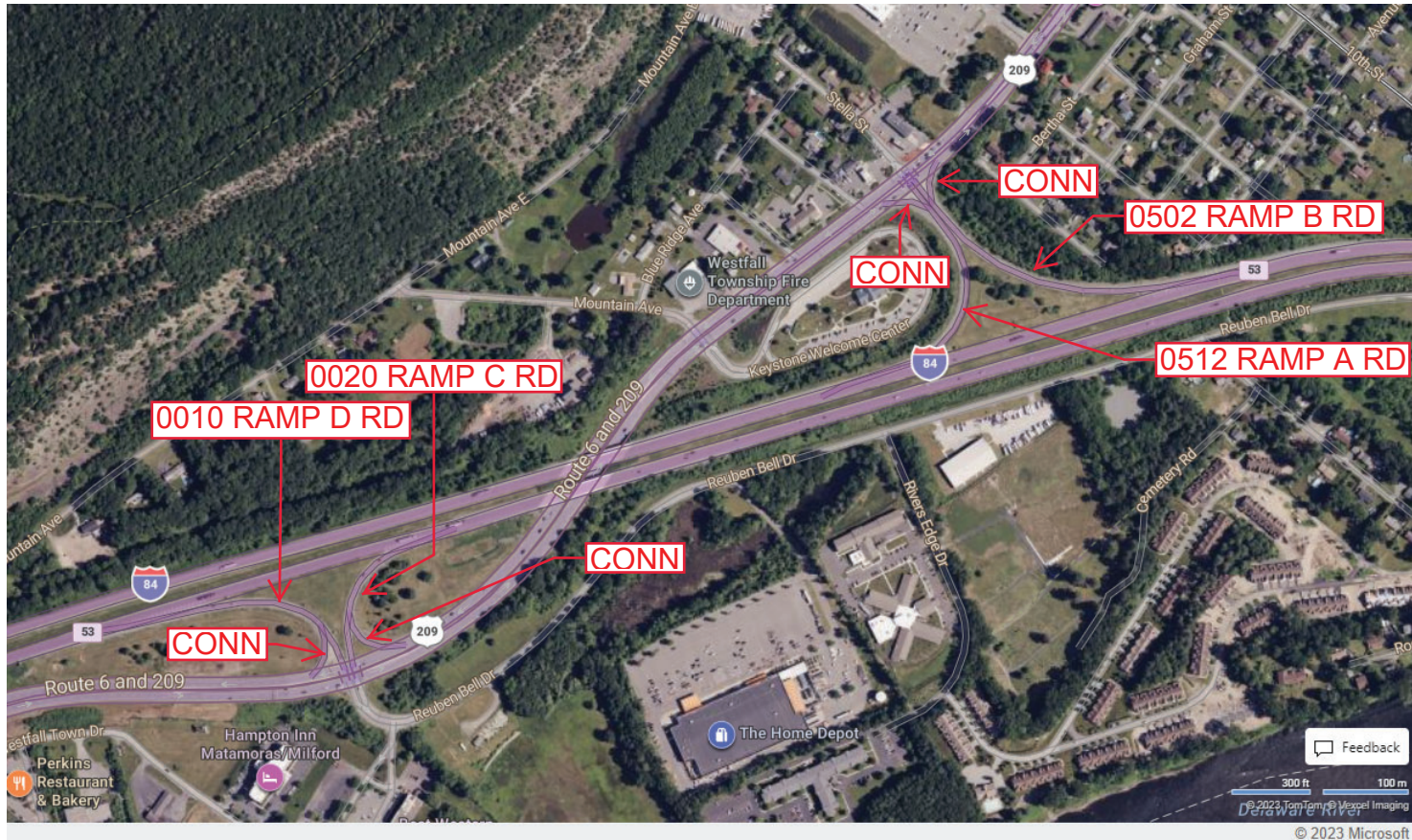
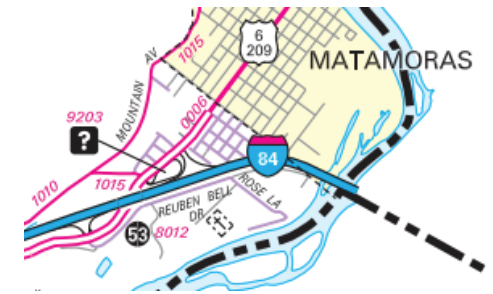
Ramp Segment Number and Ramp Segment Length Information:

Segment	Length	Segment	Length	Segment	Length	Segment	Length
0010	0584						
0020	0476						
0502	1099						
0512	0762						

Primary Route Interchange Exit Number: 53

Secondary Route Interchange Exit Number

PennDOT Type 10 Map View:



Last Date Modified:

Jan 7, 2025

County: 51

RMS Interchange Information

Bureau of Maintenance & Operations
Asset Management Division

Print Form



Interchange Number: 9201

Interchange Name: REST STOP

Intersecting SR's: I-84 Westbound

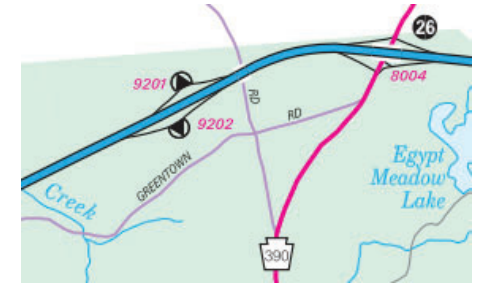
Ramp Segment Number and Ramp Segment Length Information:

Segment	Length	Segment	Length	Segment	Length	Segment	Length
0010	1414						

Primary Route Interchange Exit Number

Secondary Route Interchange Exit Number

PennDOT Type 10 Map View:



Last Date Modified: Jan 7, 2025

County: 51

RMS Interchange Information

Print Form

Interchange Number: 9202

Bureau of Maintenance & Operations
Asset Management Division



Interchange Name: REST STOP

Intersecting SR's: I-84 Eastbound

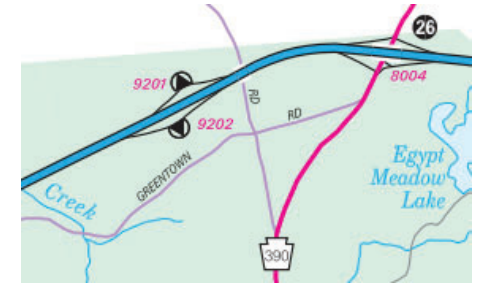
Ramp Segment Number and Ramp Segment Length Information:

Segment	Length	Segment	Length	Segment	Length	Segment	Length
0010	1462						

Primary Route Interchange Exit Number

Secondary Route Interchange Exit Number

PennDOT Type 10 Map View:



Feedback

100 ft 30 m

© 2023 TomTom, © Vexcel Imaging

© 2023 Microsoft

Last Date Modified: Nov 3, 2023

County: 51

RMS Interchange Information

Print Form

Interchange Number: 9203

Bureau of Maintenance & Operations
Asset Management Division



Interchange Name: KEYSTONE WELCOME CTR

Intersecting SR's: US 6 Pennsylvania Av

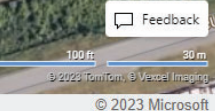
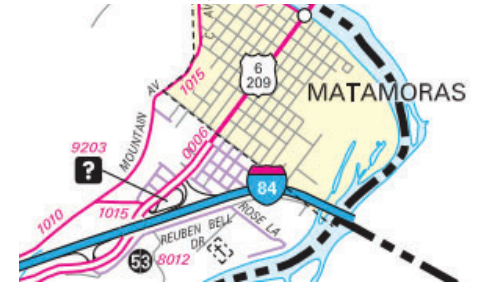
Ramp Segment Number and Ramp Segment Length Information:

Segment	Length	Segment	Length	Segment	Length	Segment	Length
0010	2323						

Primary Route Interchange Exit Number

Secondary Route Interchange Exit Number

PennDOT Type 10 Map View:



Last Date Modified: Jan 7, 2025

County: 51

RMS Interchange Information

Print Form

Interchange Number: 9406

Bureau of Maintenance & Operations
Asset Management Division



Interchange Name: PARK-N-RIDE

Intersecting SR's: PA 739

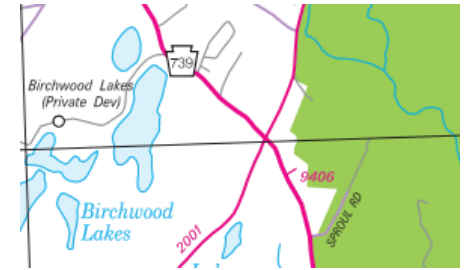
Ramp Segment Number and Ramp Segment Length Information:

Segment	Length	Segment	Length	Segment	Length	Segment	Length
0010	0600						

Primary Route Interchange Exit Number

Secondary Route Interchange Exit Number

PennDOT Type 10 Map View:



Feedback

50 ft 20 m

© 2023 TamTom, © Maxel Imaging

© 2023 Microsoft

Last Date Modified: Jul 28, 2023