

County: 57

RMS Interchange Information

Print Form

Interchange Number: 8001

Bureau of Maintenance & Operations
Asset Management Division



Interchange Name: LENOXVILLE INT

Intersecting SR's: I-81 & PA 374 Turnpike St

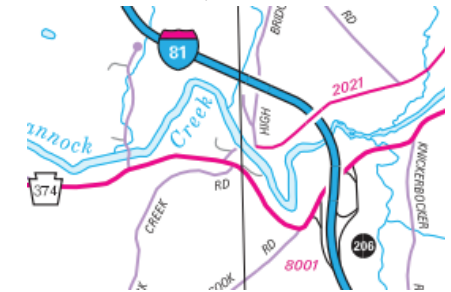
Ramp Segment Number and Ramp Segment Length Information:

Segment	Length	Segment	Length	Segment	Length	Segment	Length
0010	1722						
0020	1373						
0250	1584						
0500	0600						

Primary Route Interchange Exit Number: 206

Secondary Route Interchange Exit Number

PennDOT Type 10 Map View:



Last Date Modified:

Jul 31, 2023

County: 57

RMS Interchange Information

Print Form

Interchange Number: 8003

Bureau of Maintenance & Operations
Asset Management Division



Interchange Name: LENOX INT

Intersecting SR's: I-81, PA 92 & PA 106

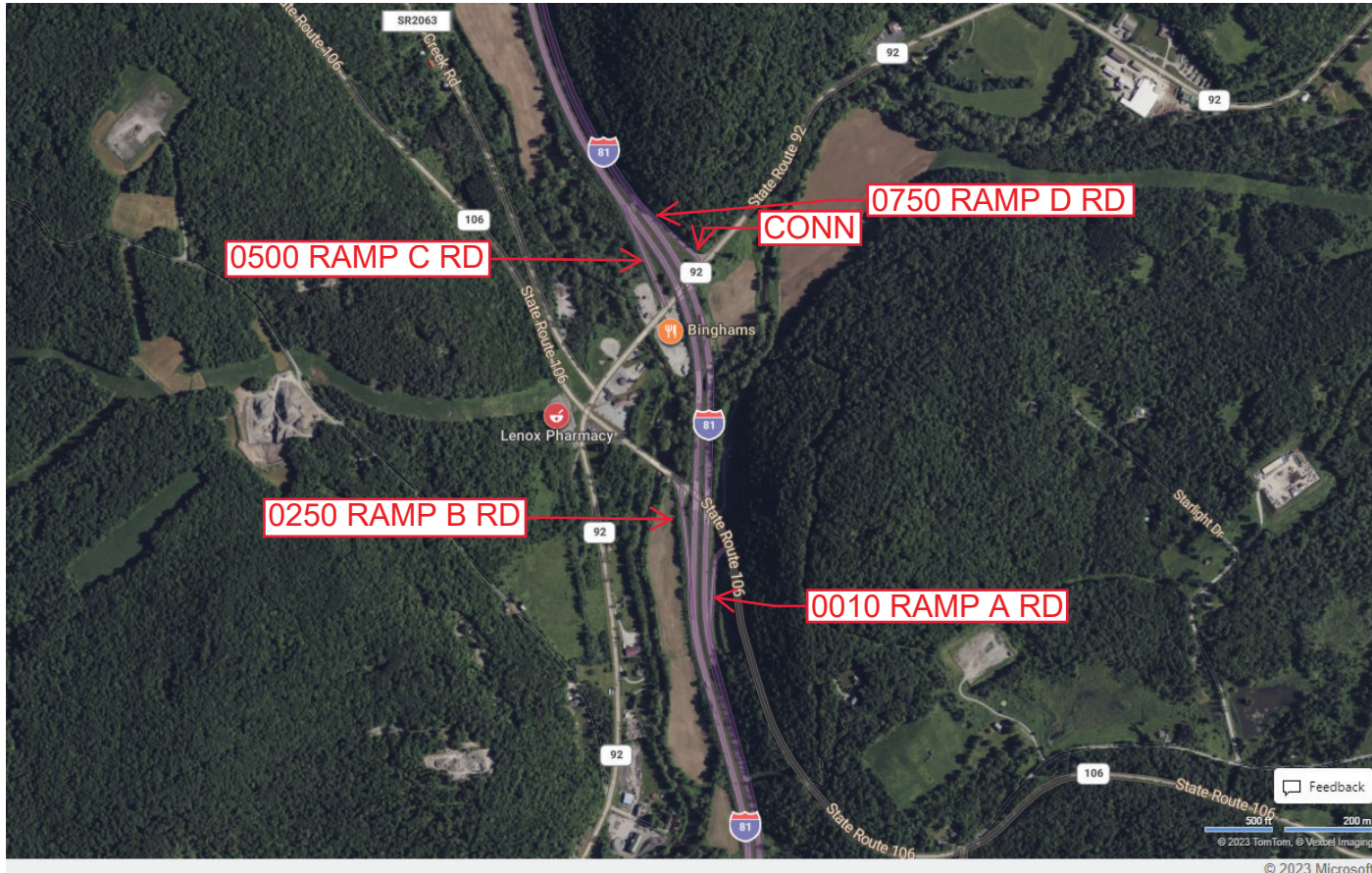
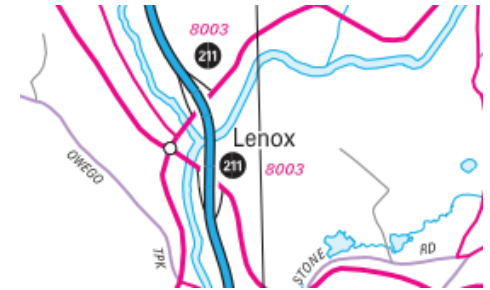
Ramp Segment Number and Ramp Segment Length Information:

Segment	Length	Segment	Length	Segment	Length	Segment	Length
0010	0504						
0250	0596						
0500	0672						
0750	0499						

Primary Route Interchange Exit Number: 211

Secondary Route Interchange Exit Number

PennDOT Type 10 Map View:



Last Date Modified: Jul 31, 2023

County: 57

RMS Interchange Information

Print Form

Interchange Number: 8005

Bureau of Maintenance & Operations
Asset Management Division



Interchange Name: HARFORD INT

Intersecting SR's: I-81 & PA 547 Sen Ed Jones Hw

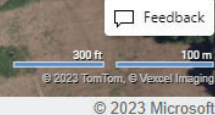
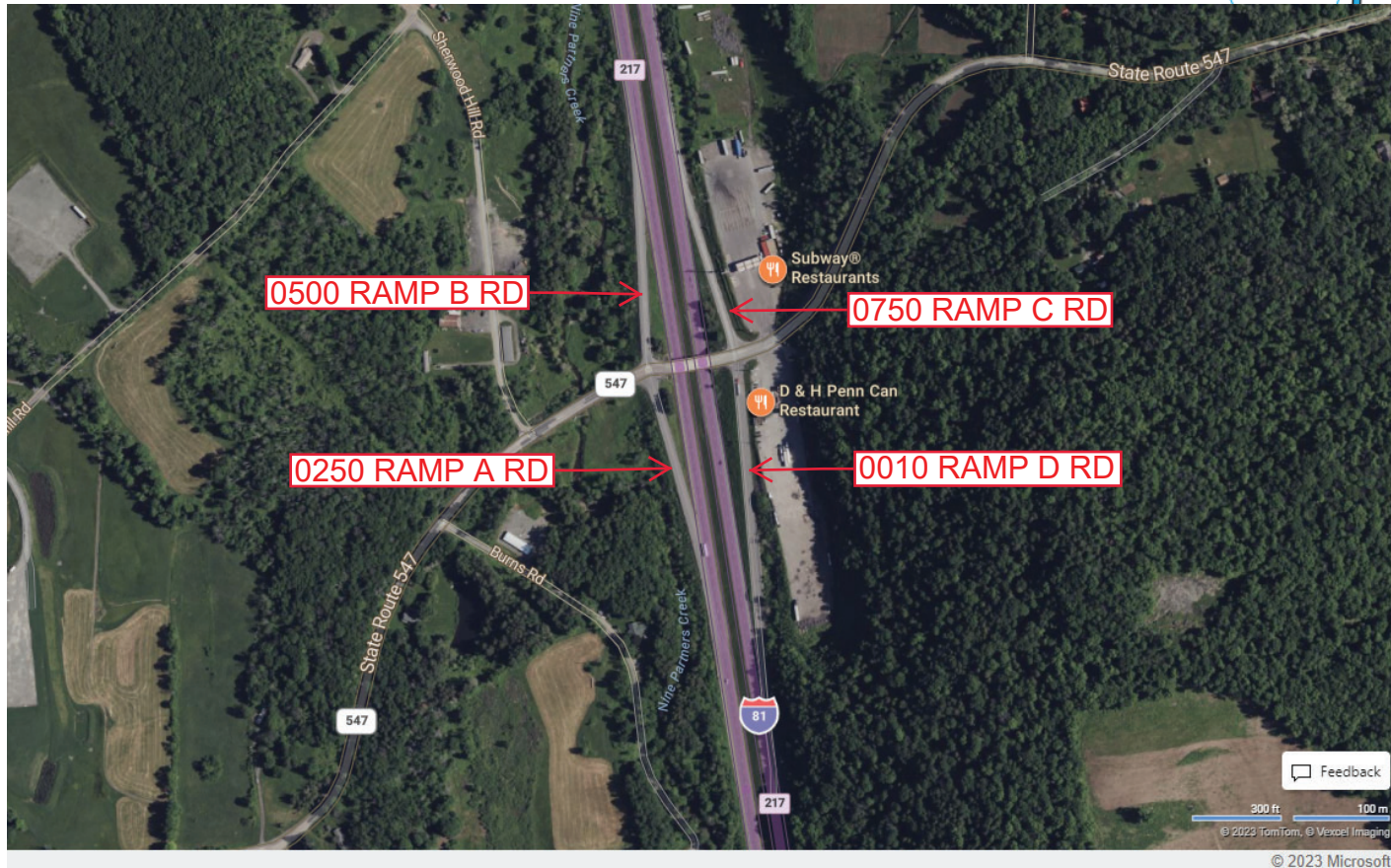
Ramp Segment Number and Ramp Segment Length Information:

Segment	Length	Segment	Length	Segment	Length	Segment	Length
0010	0982						
0250	0538						
0500	0589						
0750	0565						

Primary Route Interchange Exit Number: 217

Secondary Route Interchange Exit Number

PennDOT Type 10 Map View:



Last Date Modified: Jul 31, 2023

County: 57

RMS Interchange Information

Print Form

Interchange Number: 8007

Bureau of Maintenance & Operations
Asset Management Division



Interchange Name: GIBSON INT

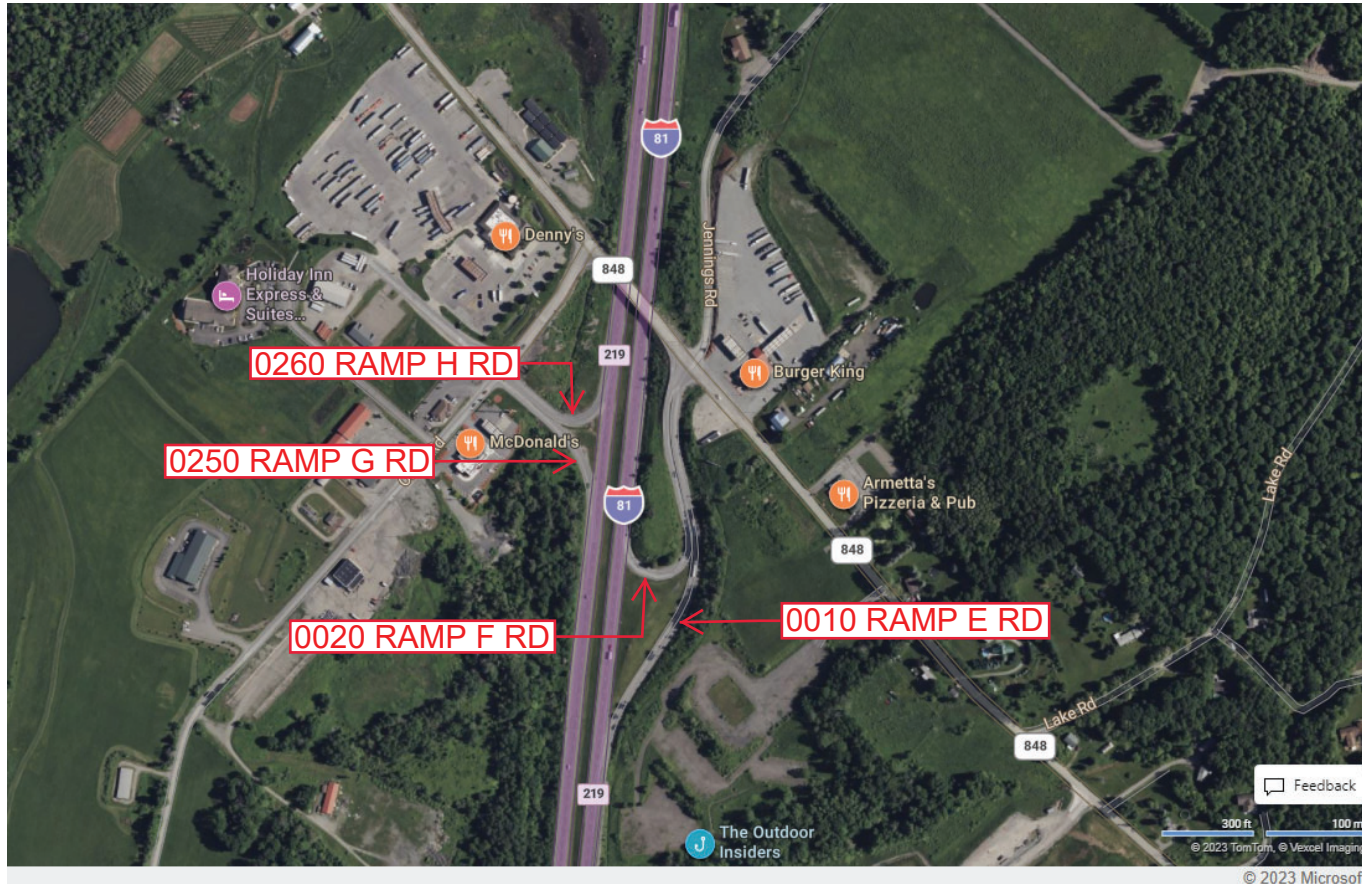
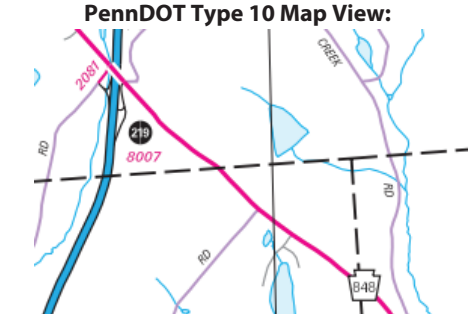
Intersecting SR's: I-81, PA 848 Harford Rd, SR 2081 & T560

Ramp Segment Number and Ramp Segment Length Information:

Segment	Length	Segment	Length	Segment	Length	Segment	Length
0010	1278						
0020	0909						
0250	0442						
0260	0357						

Primary Route Interchange Exit Number: 219

Secondary Route Interchange Exit Number



Last Date Modified:

Jul 31, 2023

County: 57

RMS Interchange Information

Print Form

Interchange Number: 8009

Bureau of Maintenance & Operations
Asset Management Division



Interchange Name: NEW MILFORD INT

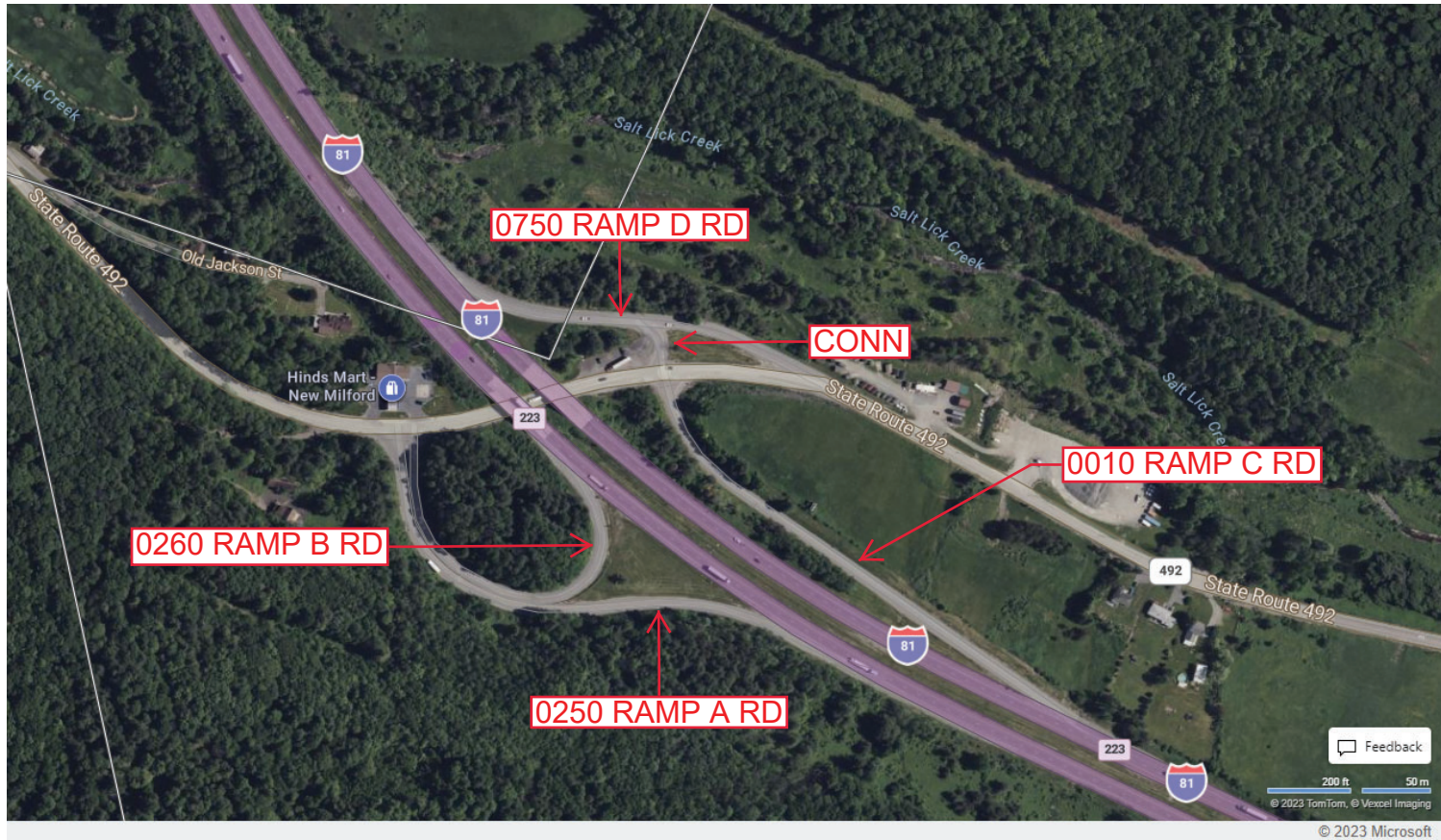
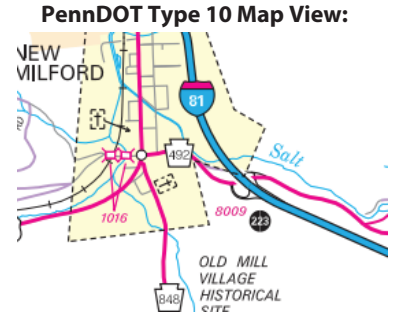
Intersecting SR's: I-81 & PA 492 Jackson St

Ramp Segment Number and Ramp Segment Length Information:

Segment	Length	Segment	Length	Segment	Length	Segment	Length
0010	1210						
0250	1185						
0260	0941						
0750	0835						

Primary Route Interchange Exit Number: 223

Secondary Route Interchange Exit Number:



Feedback
200 ft 50 m
© 2023 TomTom, © Vexcel Imaging
© 2023 Microsoft

Last Date Modified: Jul 31, 2023

County: 57

RMS Interchange Information

Print Form

Interchange Number: 8011

Bureau of Maintenance & Operations
Asset Management Division



Interchange Name: GREAT BEND INT

Intersecting SR's: I-81 & PA 171 State St

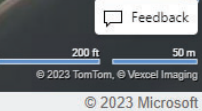
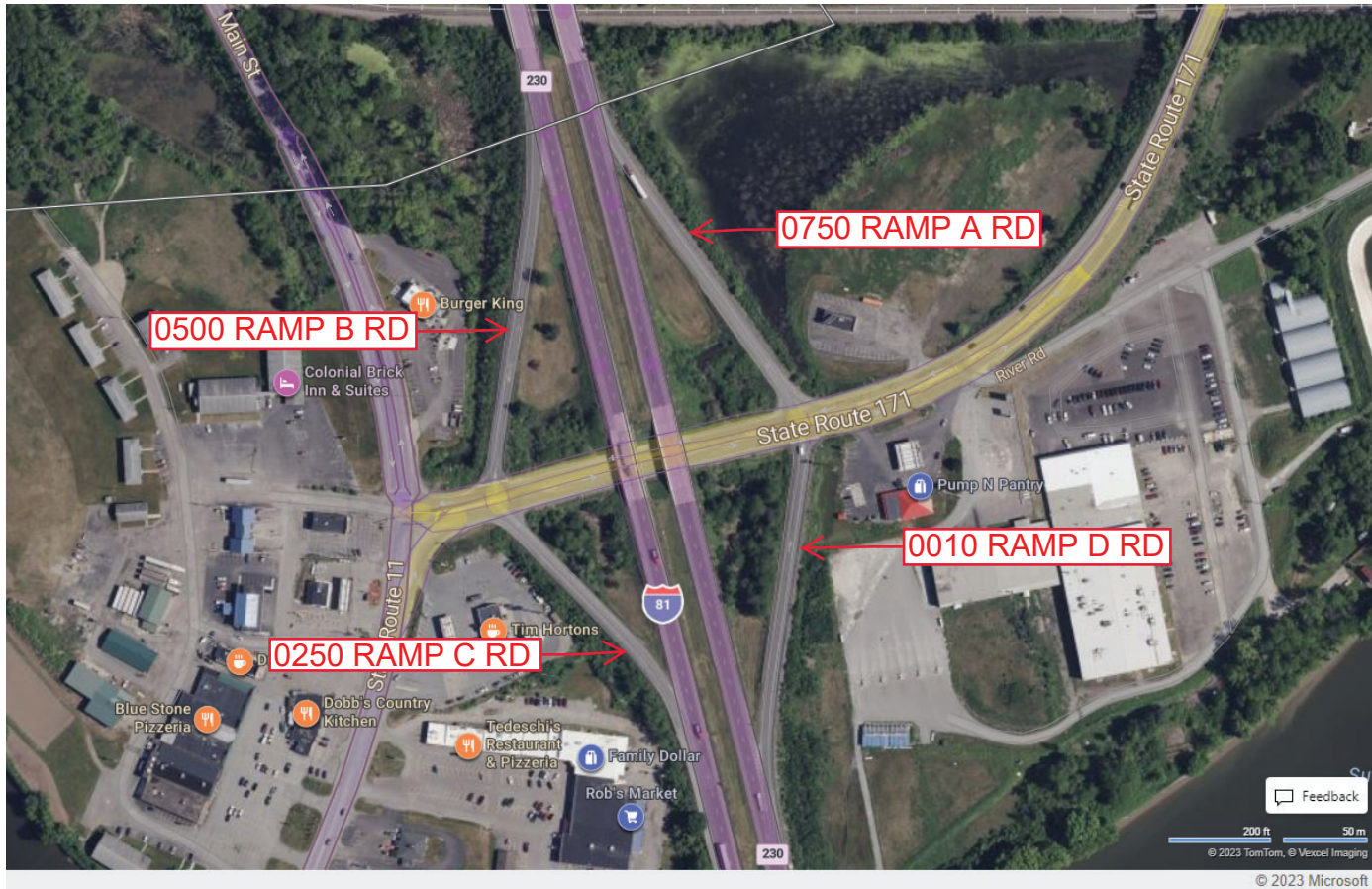
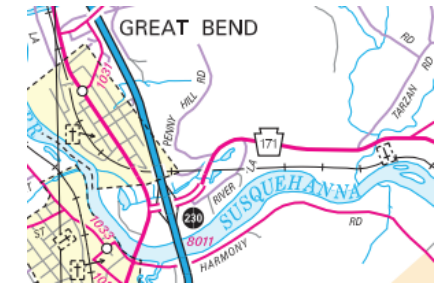
Ramp Segment Number and Ramp Segment Length Information:

Segment	Length	Segment	Length	Segment	Length	Segment	Length
0010	0616						
0250	0483						
0500	0633						
0750	0638						

Primary Route Interchange Exit Number: 230

Secondary Route Interchange Exit Number

PennDOT Type 10 Map View:



Last Date Modified:

Aug 1, 2023

County: 57

RMS Interchange Information

Print Form

Interchange Number: 9201

Bureau of Maintenance & Operations
Asset Management Division



Interchange Name: I-80 RESTAREA

Intersecting SR's: I-81

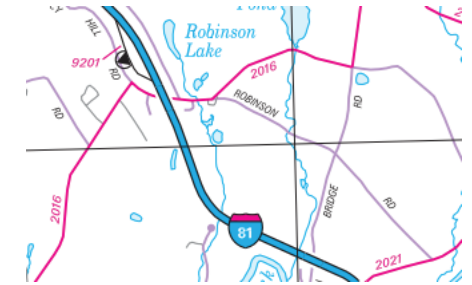
Ramp Segment Number and Ramp Segment Length Information:

Segment	Length	Segment	Length	Segment	Length	Segment	Length
0010	1552						

Primary Route Interchange Exit Number

Secondary Route Interchange Exit Number

PennDOT Type 10 Map View:



0010 ROADSIDE REST RD

Feedback

200 ft 50 m

© 2023 TomTom, © Vexcel Imaging

© 2023 Microsoft

Last Date Modified:

Aug 1, 2023

County: 57

RMS Interchange Information

Print Form

Interchange Number: 9203

Bureau of Maintenance & Operations
Asset Management Division



Interchange Name: WELCOME CENTER RD

Intersecting SR's: I-81 & US 11

Ramp Segment Number and Ramp Segment Length Information:

Segment	Length	Segment	Length	Segment	Length	Segment	Length
0010	3443						
0020	0697						
0250	0461						
0260	0461						

Primary Route
Interchange Exit
Number

Secondary Route
Interchange Exit
Number

PennDOT Type 10 Map View:



Last Date Modified:

Aug 1, 2023