

County: 63

RMS Interchange Information

Print Form

Interchange Number: 8002

Bureau of Maintenance & Operations
Asset Management Division



Interchange Name: NEWFOUNDLAND INT

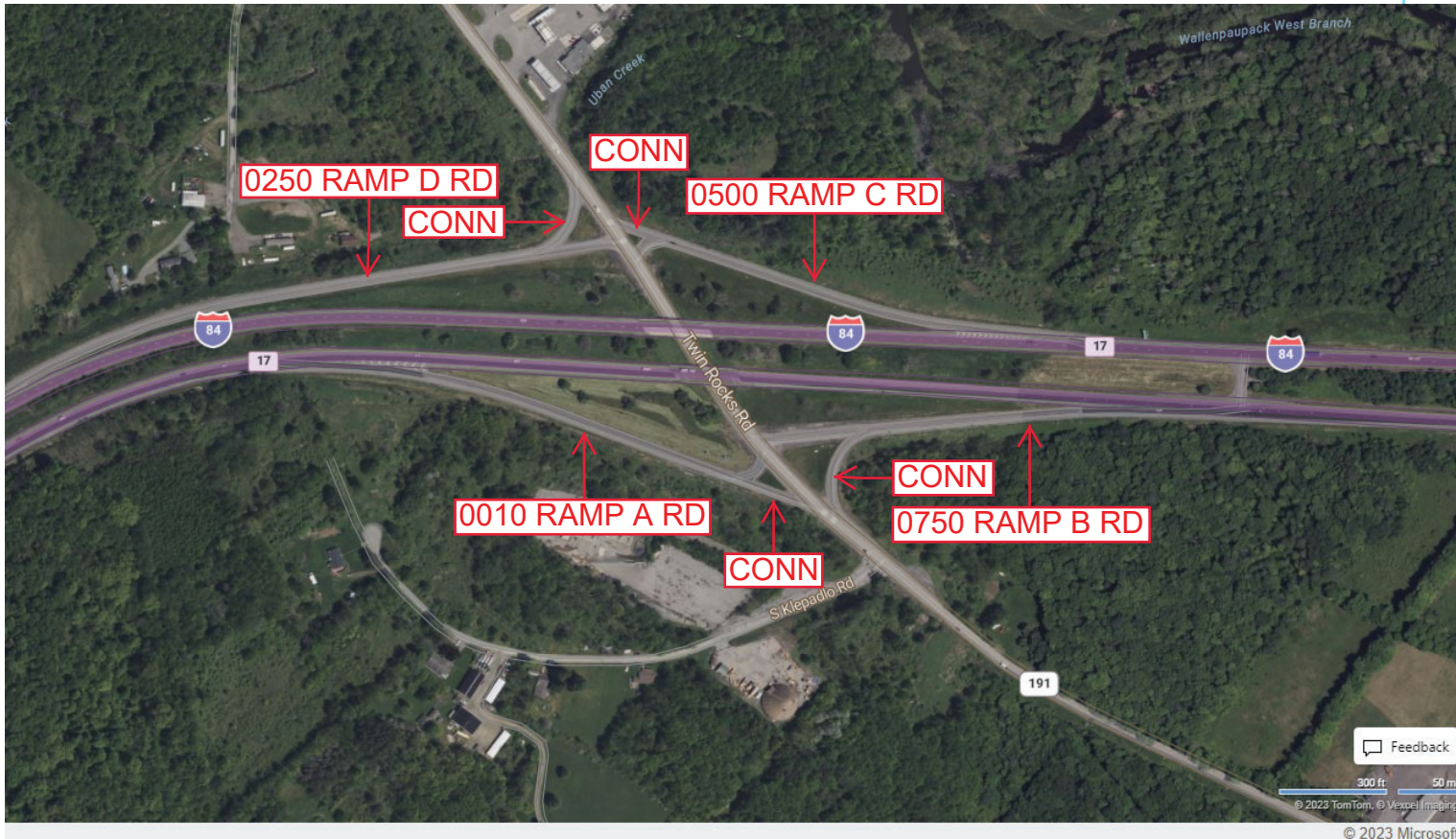
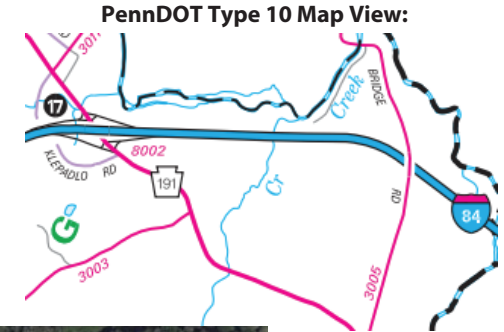
Intersecting SR's: I-84 & PA 191 Twin Rocks Rd

Ramp Segment Number and Ramp Segment Length Information:

Segment	Length	Segment	Length	Segment	Length	Segment	Length
0010	1013						
0250	1705						
0500	0946						
0750	0906						

Primary Route Interchange Exit Number: 17

Secondary Route Interchange Exit Number



Last Date Modified:

Aug 2, 2023

County: **63**

RMS Interchange Information

Print Form

Interchange Number: **8003**

Bureau of Maintenance & Operations
Asset Management Division



Interchange Name: **CHERRY RIDGE- INTERVALE RD**

Intersecting SR's: **PA 191 Sunrise Av & SR 3028 Owego Tp**

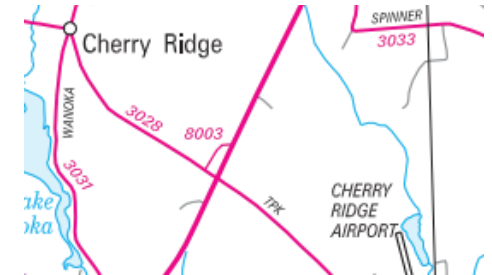
Ramp Segment Number and Ramp Segment Length Information:

Segment	Length	Segment	Length	Segment	Length	Segment	Length
0500	0644						
0510	0659						

Primary Route
Interchange Exit
Number

Secondary Route
Interchange Exit
Number

PennDOT Type 10 Map View:



Last Date Modified: **Aug 2, 2023**