

County: 65

# RMS Interchange Information

Print Form

Bureau of Maintenance & Operations  
Asset Management Division



Interchange Number: 8002

Interchange Name: US 11 SH

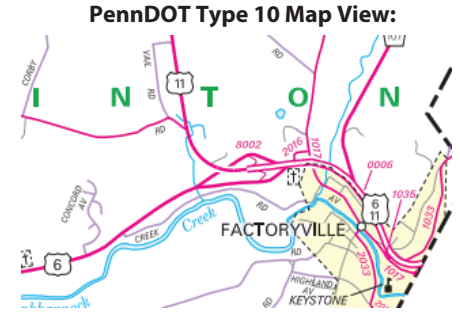
Intersecting SR's: US 6 & US 11

Ramp Segment Number and Ramp Segment Length Information:

Segment	Length	Segment	Length	Segment	Length	Segment	Length
0010	1620						
0020	1712						

Primary Route Interchange Exit Number

Secondary Route Interchange Exit Number



Last Date Modified: Aug 2, 2023



County: 65

# RMS Interchange Information

Print Form

Interchange Number: 8004

Bureau of Maintenance & Operations  
Asset Management Division



Interchange Name: TUNKHANNOCK INT

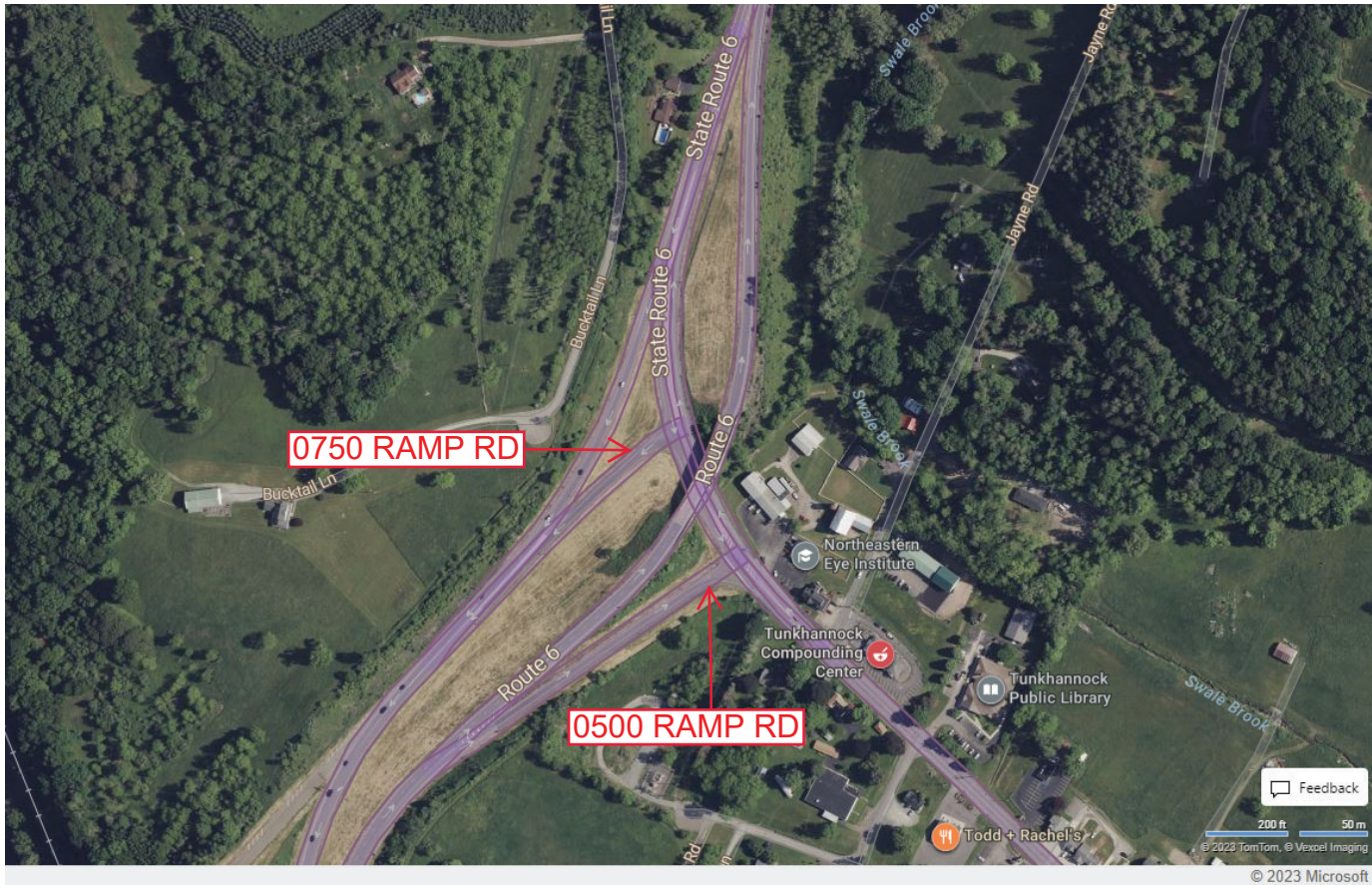
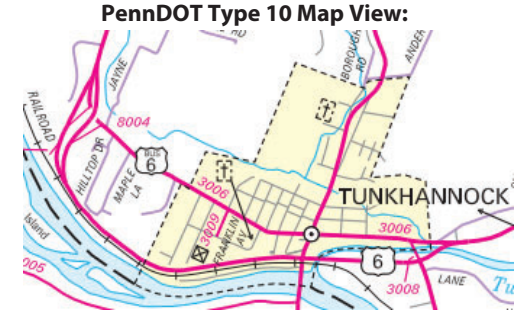
Intersecting SR's: US 6 & SR 3006 Tioga St

Ramp Segment Number and Ramp Segment Length Information:

Segment	Length	Segment	Length	Segment	Length	Segment	Length
0500	0686						
0750	0669						

Primary Route Interchange Exit Number

Secondary Route Interchange Exit Number



Last Date Modified: Oct 29, 2024



County: **65**

# RMS Interchange Information

Print Form

Interchange Number: **9302**

Bureau of Maintenance & Operations  
Asset Management Division



Interchange Name: **TRUCK ESCAPE RAMP**

Intersecting SR's: **US 6**

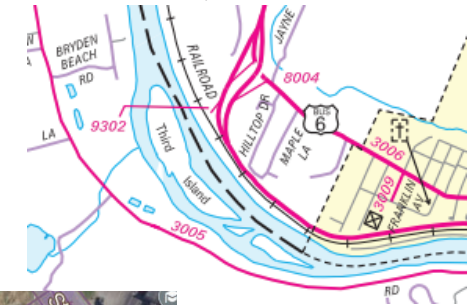
Ramp Segment Number and Ramp Segment Length Information:

Segment	Length	Segment	Length	Segment	Length	Segment	Length
<b>0010</b>	<b>0432</b>						

Primary Route  
Interchange Exit  
Number

Secondary Route  
Interchange Exit  
Number

PennDOT Type 10 Map View:



Last Date Modified:

Jan 6, 2025