

County: 06

RMS Interchange Information

Print Form

Interchange Number: 8001

Bureau of Maintenance & Operations
Asset Management Division



Interchange Name: MORGANTOWN INT

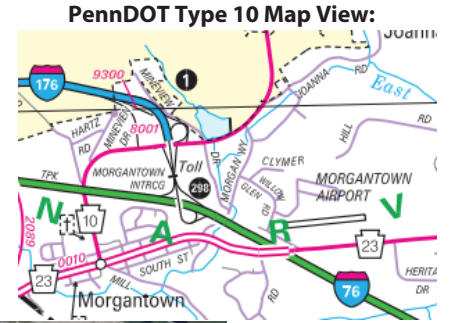
Intersecting SR's: I-176 & PA 10 Morgantown Rd

Ramp Segment Number and Ramp Segment Length Information:

Segment	Length	Segment	Length	Segment	Length	Segment	Length
0500	2057						
0750	1818						

Primary Route Interchange Exit Number: 1A

Secondary Route Interchange Exit Number:



Last Date Modified: Aug 4, 2023

County: 06

RMS Interchange Information

Print Form

Interchange Number: 8002

Bureau of Maintenance & Operations
Asset Management Division



Interchange Name: FRYSTOWN INT

Intersecting SR's: I-78 & PA 645 Camp Swatara Rd

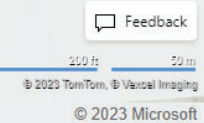
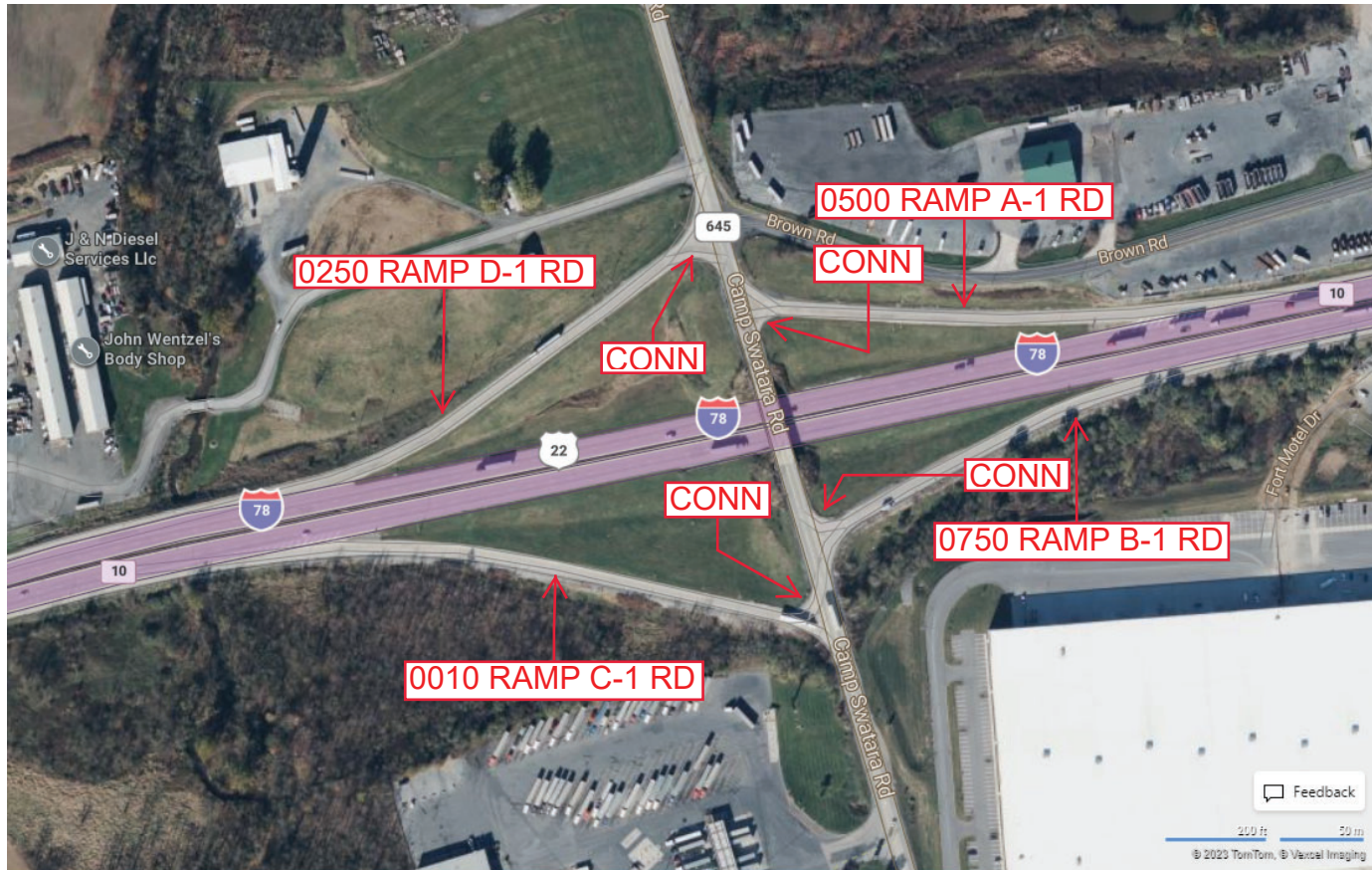
Ramp Segment Number and Ramp Segment Length Information:

Segment	Length	Segment	Length	Segment	Length	Segment	Length
0010	0961						
0250	0843						
0500	0762						
0750	0680						

Primary Route Interchange Exit Number: 10

Secondary Route Interchange Exit Number

PennDOT Type 10 Map View:



Last Date Modified: Oct 23, 2024

County: 06

RMS Interchange Information

Print Form

Interchange Number: 8004

Bureau of Maintenance & Operations
Asset Management Division



Interchange Name: BETHEL INT

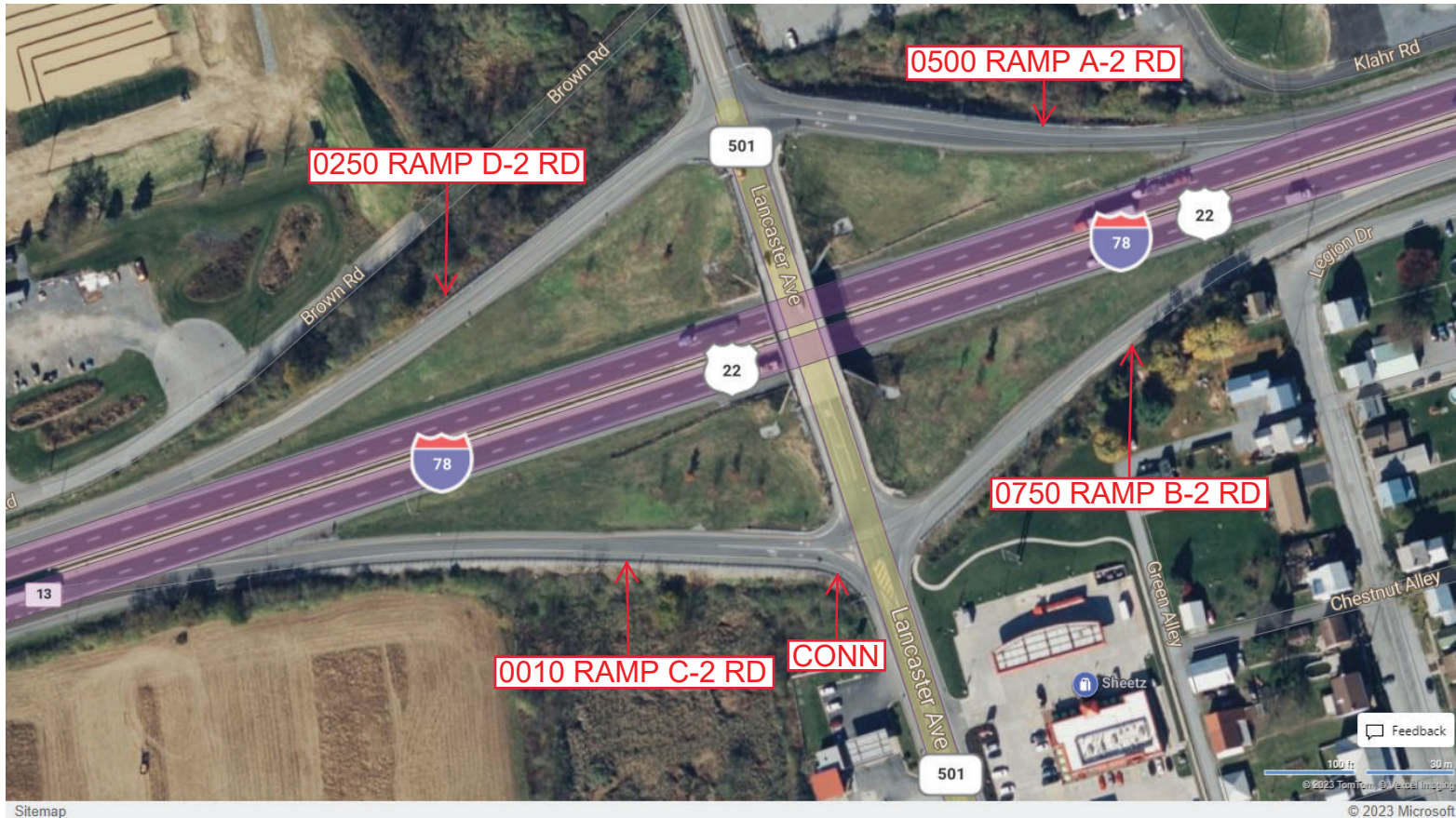
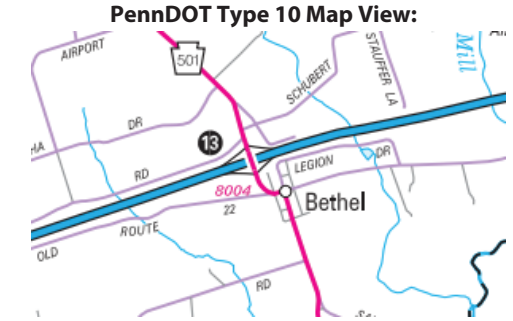
Intersecting SR's: I-78 & PA 501 Lancaster Av

Ramp Segment Number and Ramp Segment Length Information:

Segment	Length	Segment	Length	Segment	Length	Segment	Length
0010	0634						
0250	0716						
0500	0522						
0750	0565						

Primary Route Interchange Exit Number: 13

Secondary Route Interchange Exit Number



Last Date Modified:

Aug 8, 2023

County: 06

RMS Interchange Information

Print Form

Interchange Number: 8005

Bureau of Maintenance & Operations
Asset Management Division



Interchange Name: SHILLINGTON INT

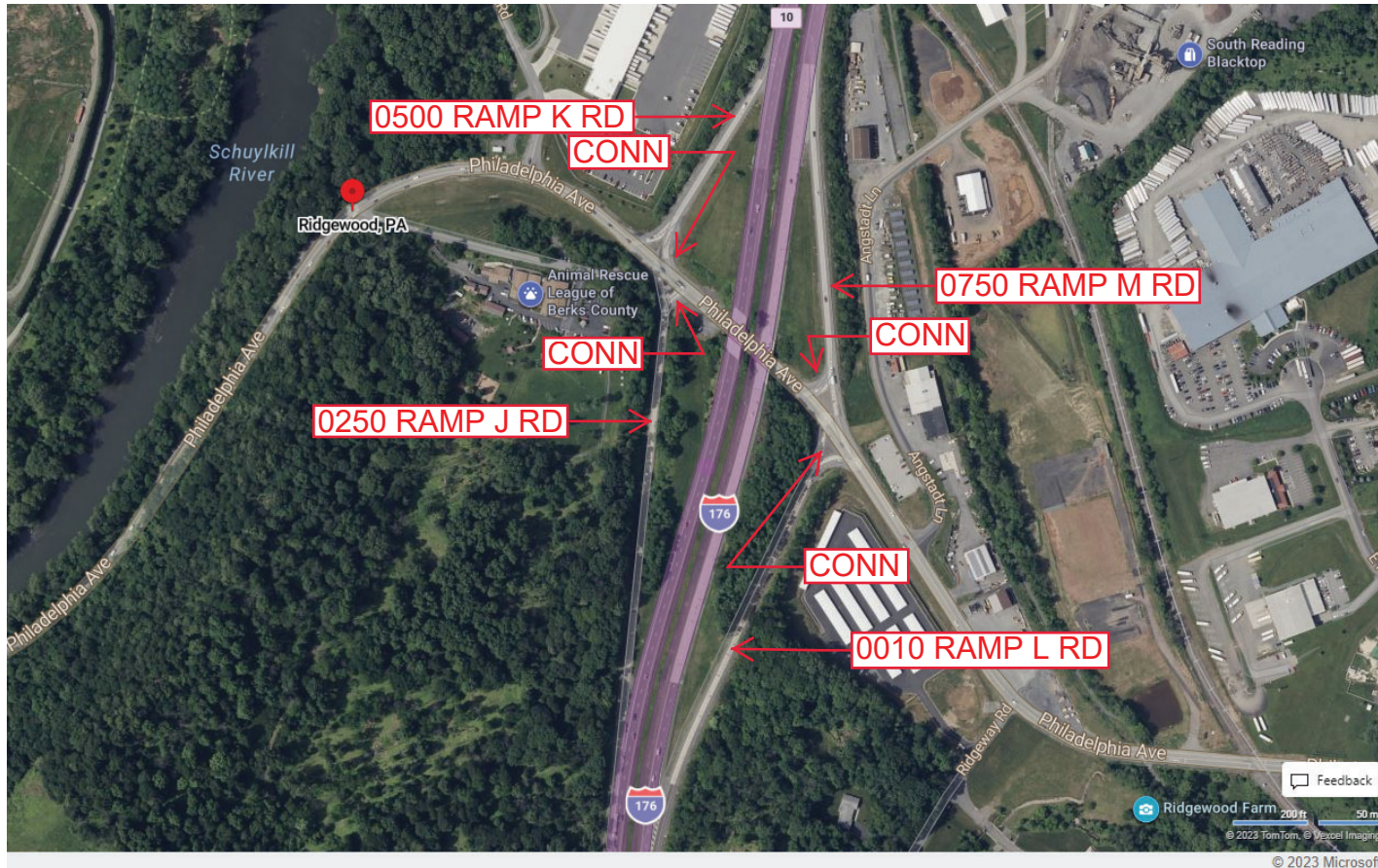
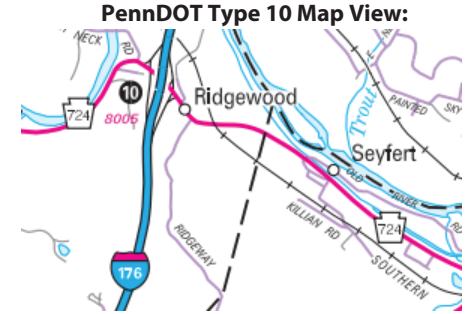
Intersecting SR's: I-176 & PA 725 Furnace St

Ramp Segment Number and Ramp Segment Length Information:

Segment	Length	Segment	Length	Segment	Length	Segment	Length
0010	1026						
0250	1103						
0500	0545						
0750	0737						

Primary Route Interchange Exit Number: 10

Secondary Route Interchange Exit Number



Last Date Modified:

Oct 23, 2024

County: 06

RMS Interchange Information

Print Form

Interchange Number: 8006

Bureau of Maintenance & Operations
Asset Management Division



Interchange Name: MIDWAY INT

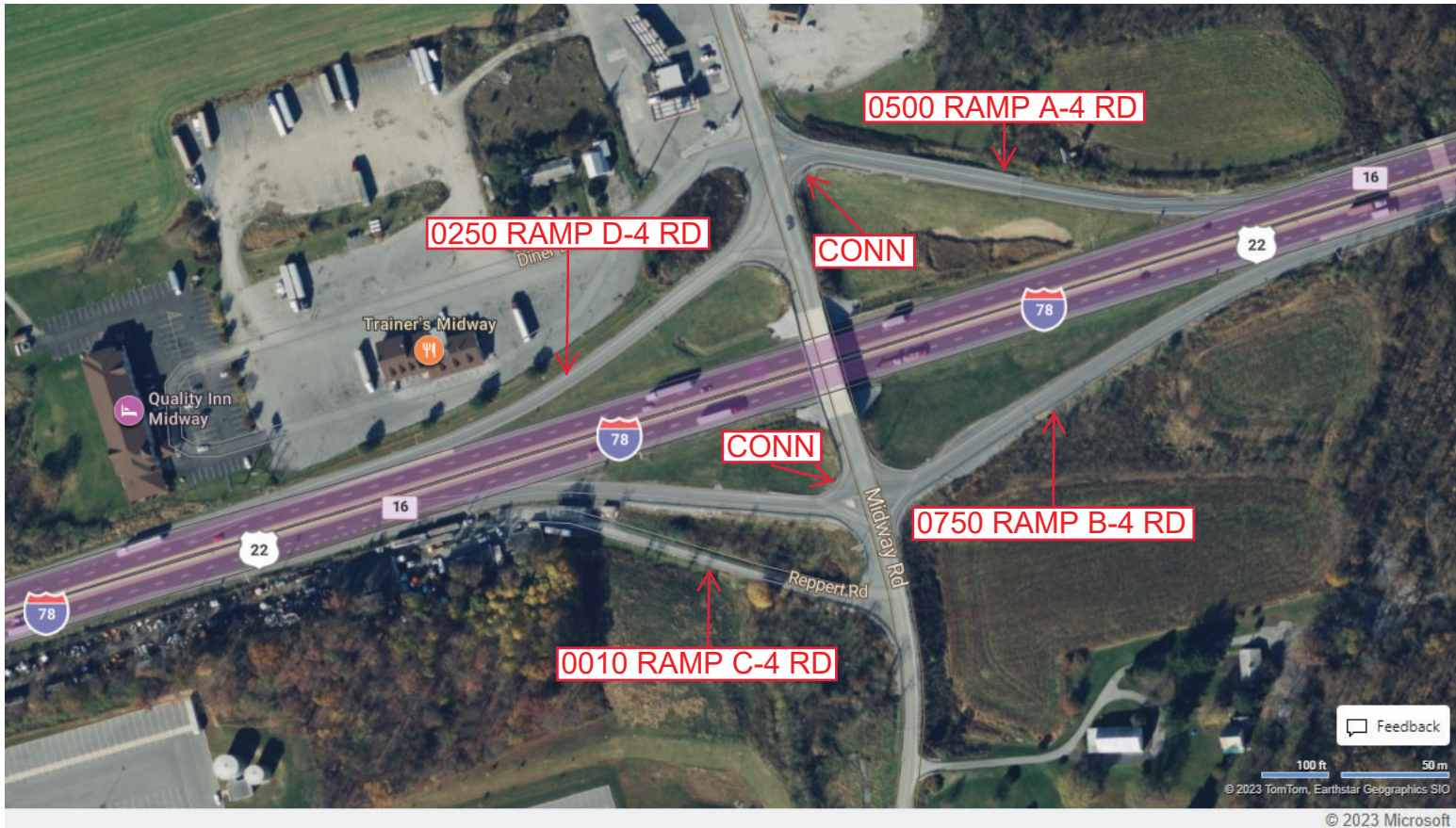
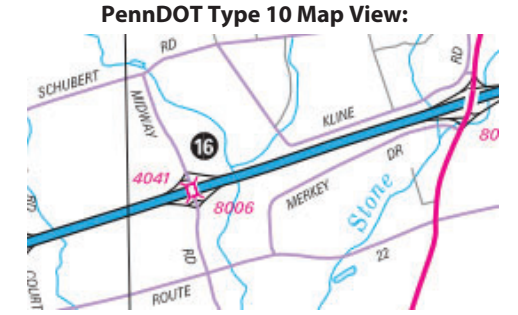
Intersecting SR's: I-78 & T688 Midway Rd

Ramp Segment Number and Ramp Segment Length Information:

Segment	Length	Segment	Length	Segment	Length	Segment	Length
0010	0450						
0250	0565						
0500	0645						
0750	0723						

Primary Route Interchange Exit Number: 16

Secondary Route Interchange Exit Number



Last Date Modified:

Jan 23, 2025

County: 06

RMS Interchange Information

Print Form

Interchange Number: 8007

Bureau of Maintenance & Operations
Asset Management Division



Interchange Name: PA 422 & I-176

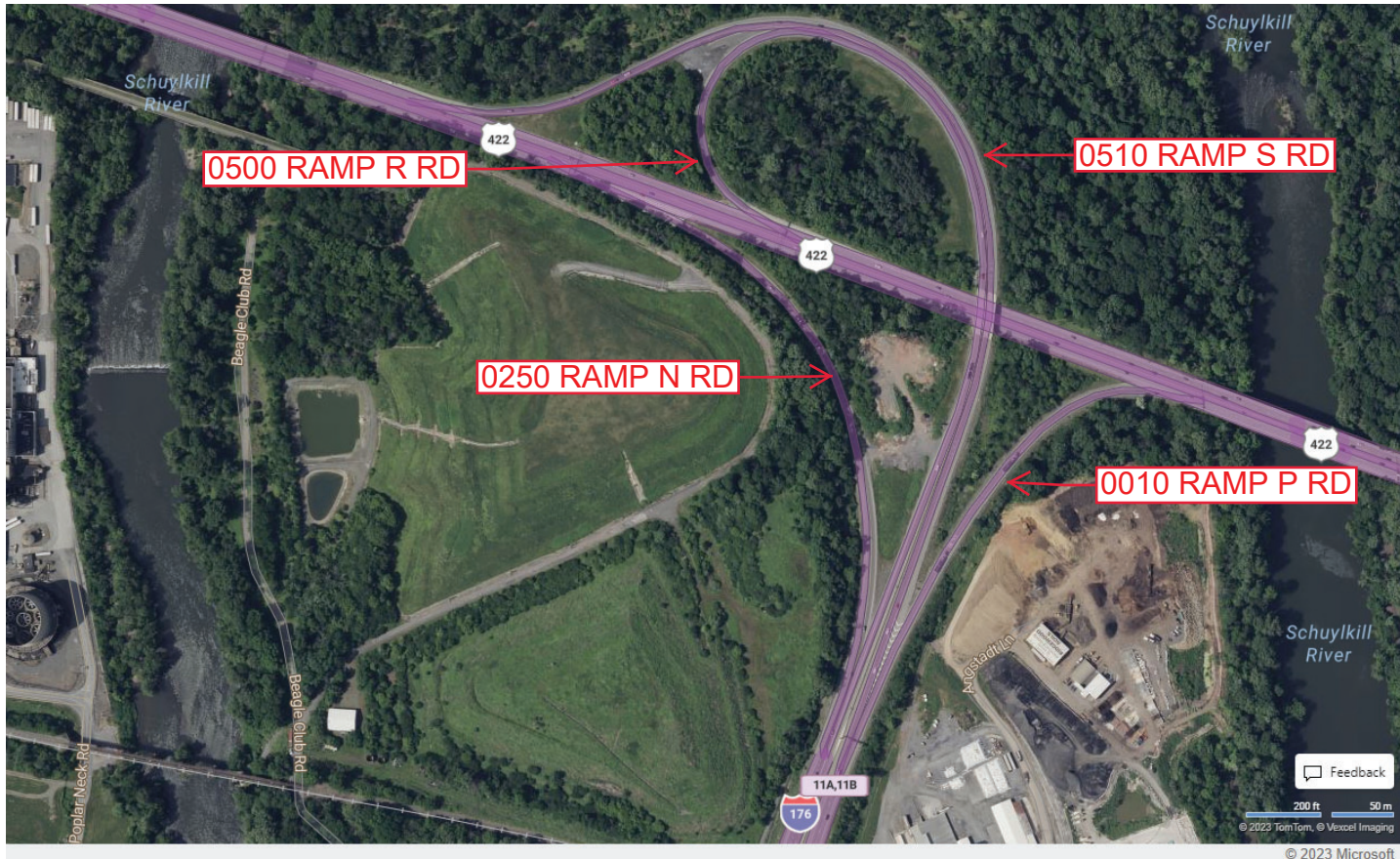
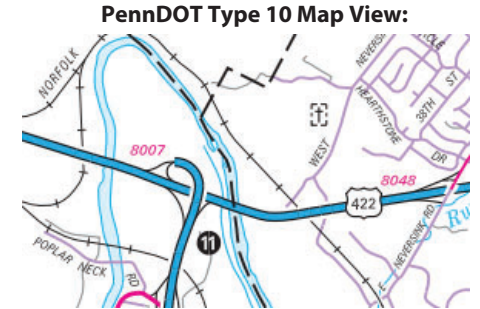
Intersecting SR's: I-176 & PA 422 Warren St

Ramp Segment Number and Ramp Segment Length Information:

Segment	Length	Segment	Length	Segment	Length	Segment	Length
0010	0917						
0250	1225						
0500	1628						
0510	1954						

Primary Route Interchange Exit Number: 11A/B

Secondary Route Interchange Exit Number



Last Date Modified:

Oct 23, 2024

County: 06

RMS Interchange Information

Print Form

Interchange Number: 8008

Bureau of Maintenance & Operations
Asset Management Division



Interchange Name: REHRERSBURG INT

Intersecting SR's: I-78 & PA 419 Four Point Rd

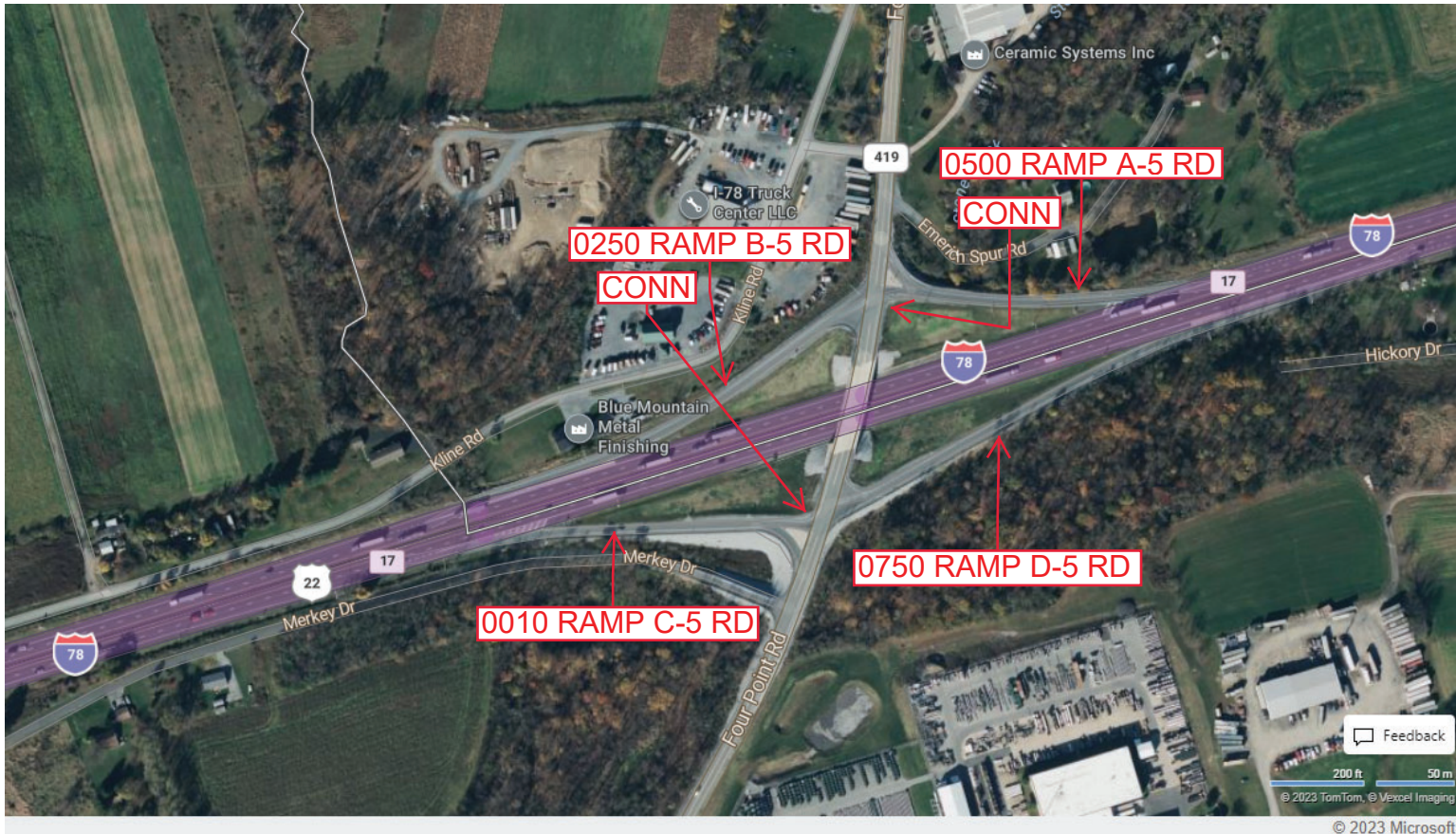
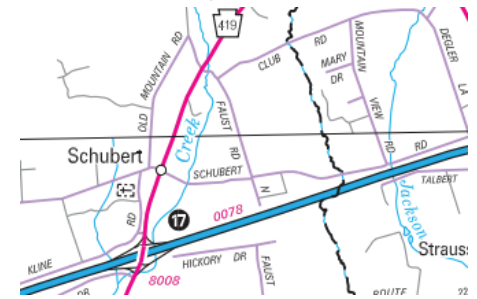
Ramp Segment Number and Ramp Segment Length Information:

Segment	Length	Segment	Length	Segment	Length	Segment	Length
0010	0558						
0250	0575						
0500	0475						
0750	0725						

Primary Route Interchange Exit Number: 17

Secondary Route Interchange Exit Number

PennDOT Type 10 Map View:



Last Date Modified: Aug 9, 2023

County: 06

RMS Interchange Information

Print Form

Interchange Number: 8009

Bureau of Maintenance & Operations
Asset Management Division



Interchange Name: VIRGINSVILLE & KUTZTOWN INT

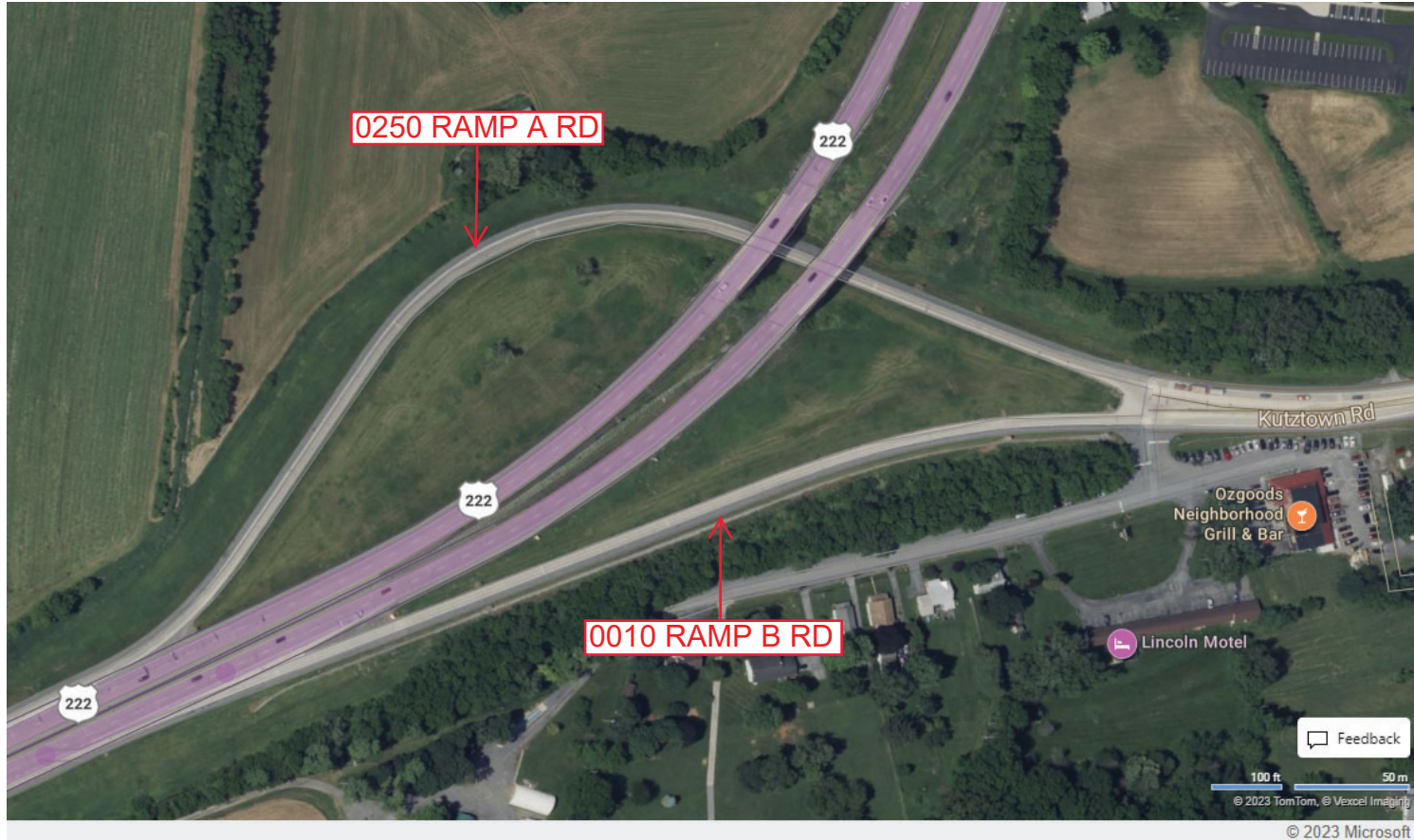
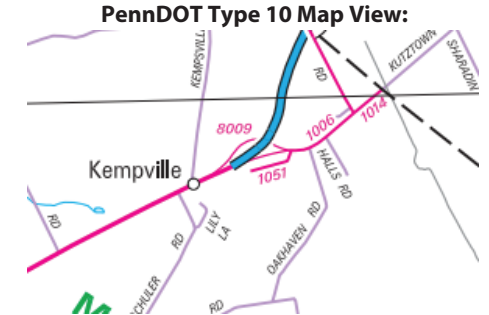
Intersecting SR's: US 222 & SR 1006 Crystal Cave Rd

Ramp Segment Number and Ramp Segment Length Information:

Segment	Length	Segment	Length	Segment	Length	Segment	Length
0010	1164						
0250	1741						

Primary Route Interchange Exit Number

Secondary Route Interchange Exit Number



Last Date Modified:

Aug 9, 2023

County: 06

RMS Interchange Information

Print Form

Interchange Number: 8010

Bureau of Maintenance & Operations
Asset Management Division



Interchange Name: STRAUSSTOWN INT

Intersecting SR's: I-78 & PA 183 Bernsville Rd

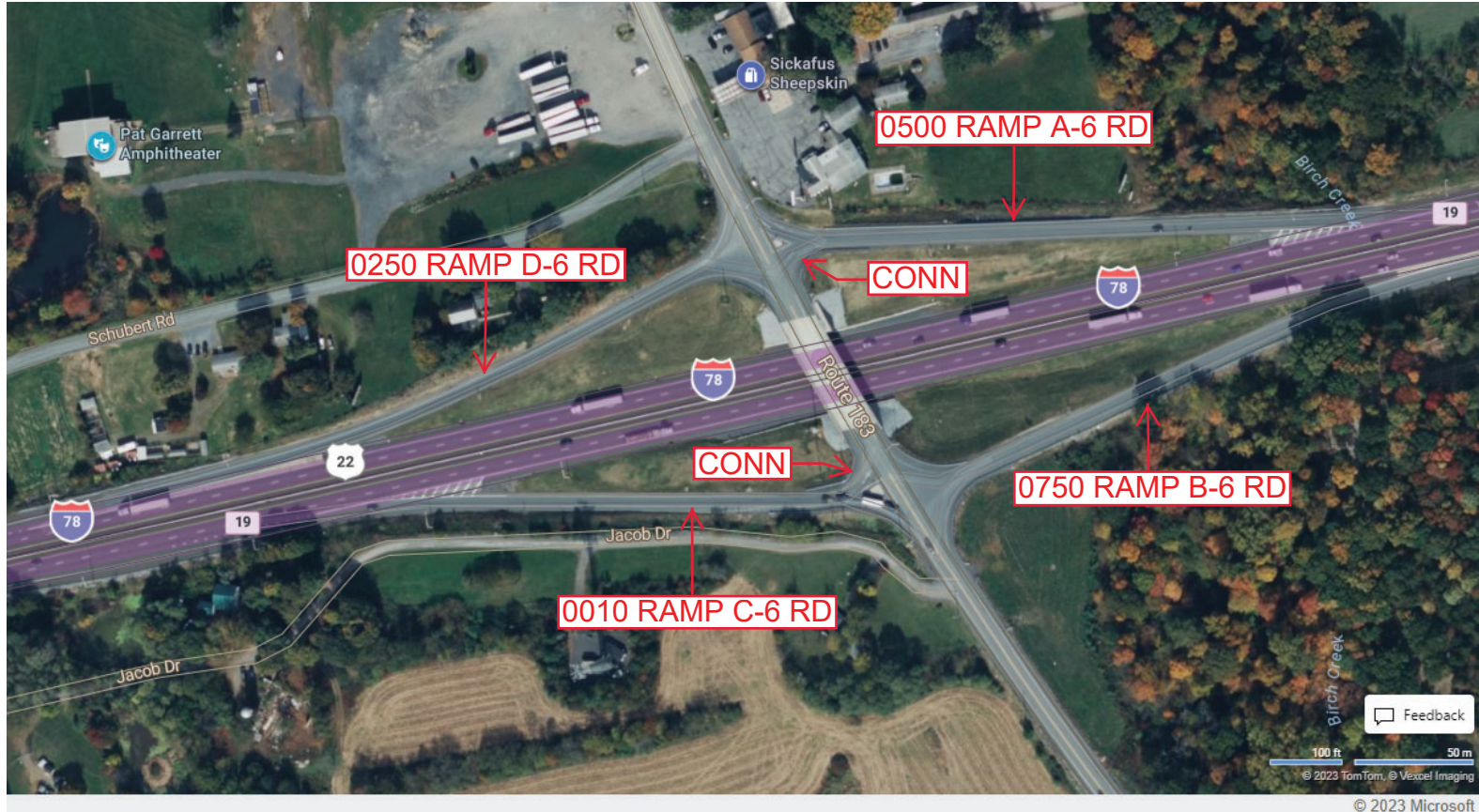
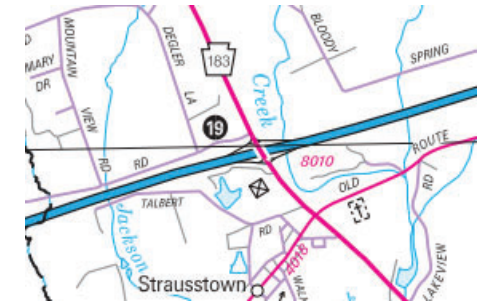
Ramp Segment Number and Ramp Segment Length Information:

Segment	Length	Segment	Length	Segment	Length	Segment	Length
0010	0566						
0250	0625						
0500	0693						
0750	0687						

Primary Route Interchange Exit Number: 19

Secondary Route Interchange Exit Number

PennDOT Type 10 Map View:



Last Date Modified:

Aug 10, 2023

County: 06

RMS Interchange Information

Print Form

Interchange Number: 8011

Bureau of Maintenance & Operations
Asset Management Division



Interchange Name: VIRGINVILLE INT

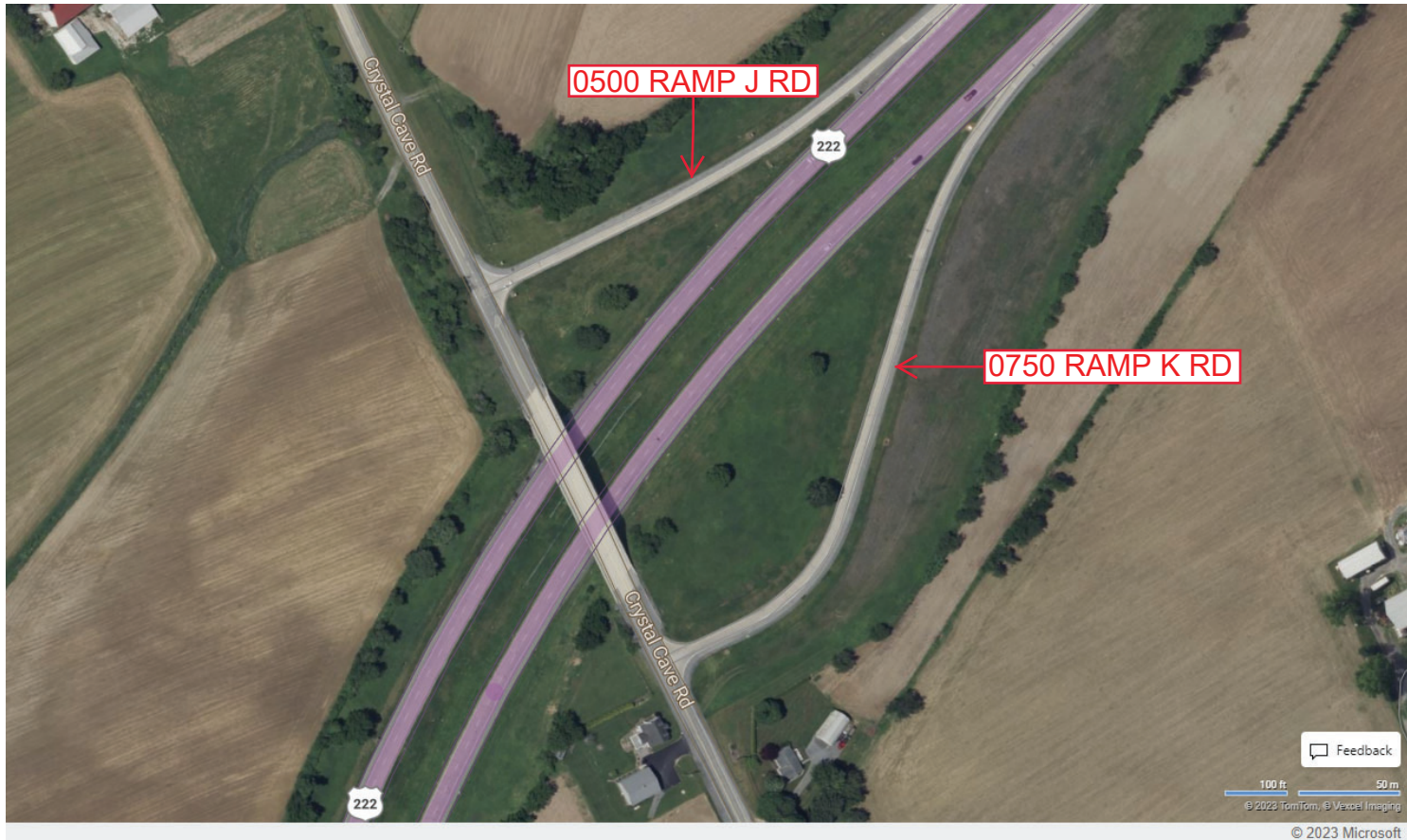
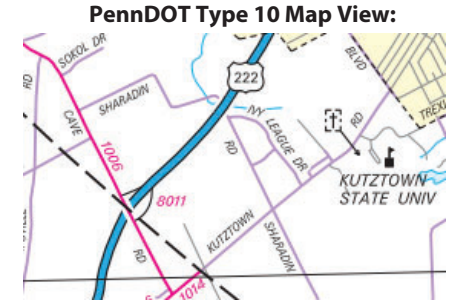
Intersecting SR's: US 222 & SR1006 Crystal Cave Rd

Ramp Segment Number and Ramp Segment Length Information:

Segment	Length	Segment	Length	Segment	Length	Segment	Length
0500	0742						
0750	1089						

Primary Route Interchange Exit Number

Secondary Route Interchange Exit Number



County: 06

RMS Interchange Information

Print Form

Interchange Number: 8012

Bureau of Maintenance & Operations
Asset Management Division



Interchange Name: SHARLETSVILLE INT

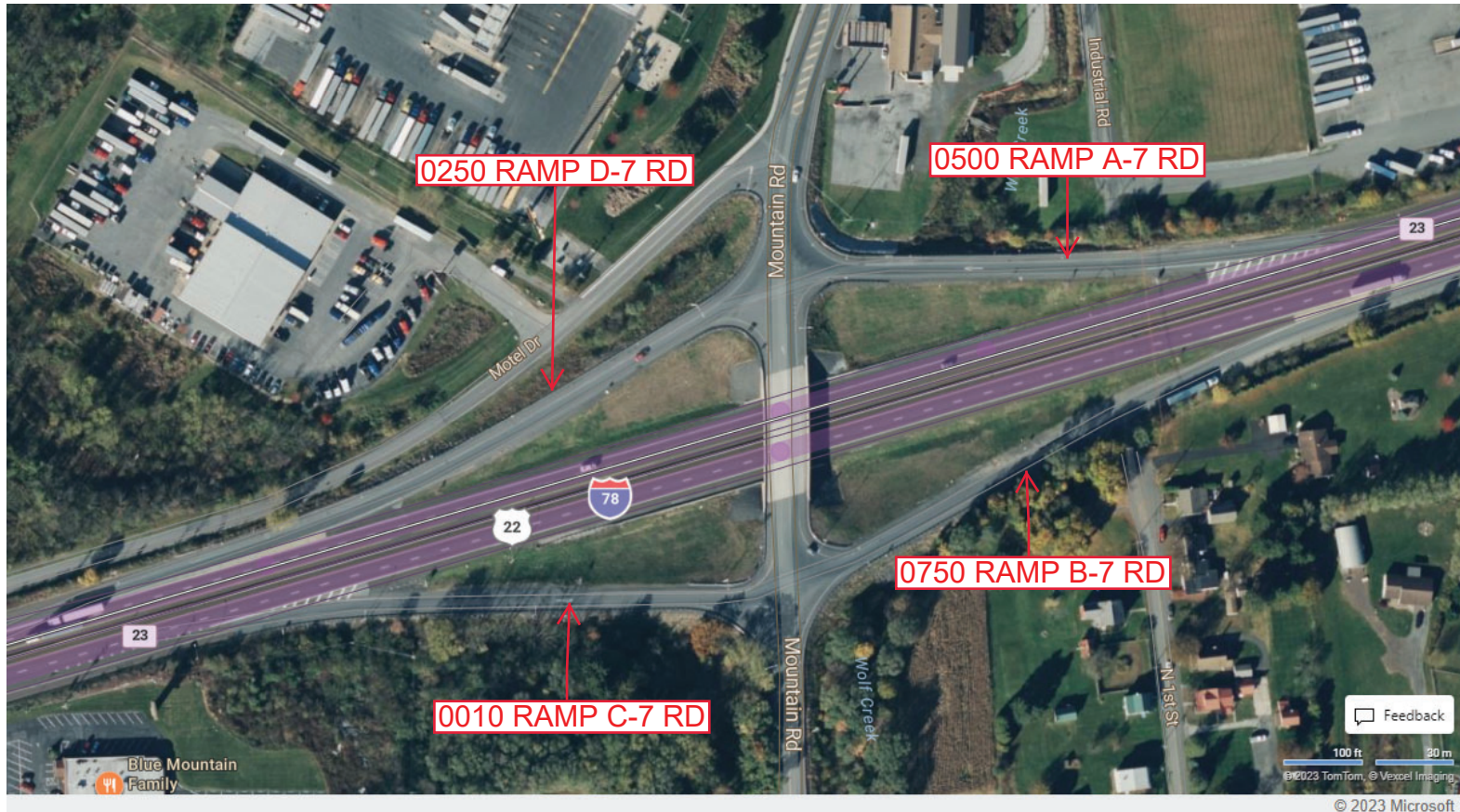
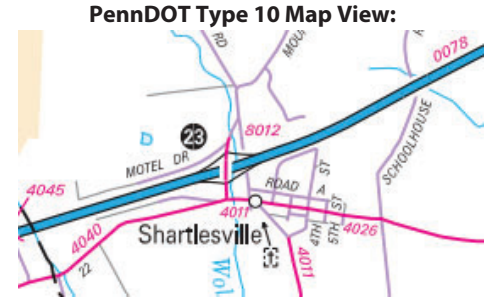
Intersecting SR's: I-78 & PA 4011 Sharletsville Rd

Ramp Segment Number and Ramp Segment Length Information:

Segment	Length	Segment	Length	Segment	Length	Segment	Length
0010	0524						
0250	0565						
0500	0527						
0750	0631						

Primary Route Interchange Exit Number: 23

Secondary Route Interchange Exit Number



Last Date Modified:

Aug 10, 2023

County: 06

RMS Interchange Information

Print Form

Interchange Number: 8013

Bureau of Maintenance & Operations
Asset Management Division



Interchange Name: KUTZTOWN INT

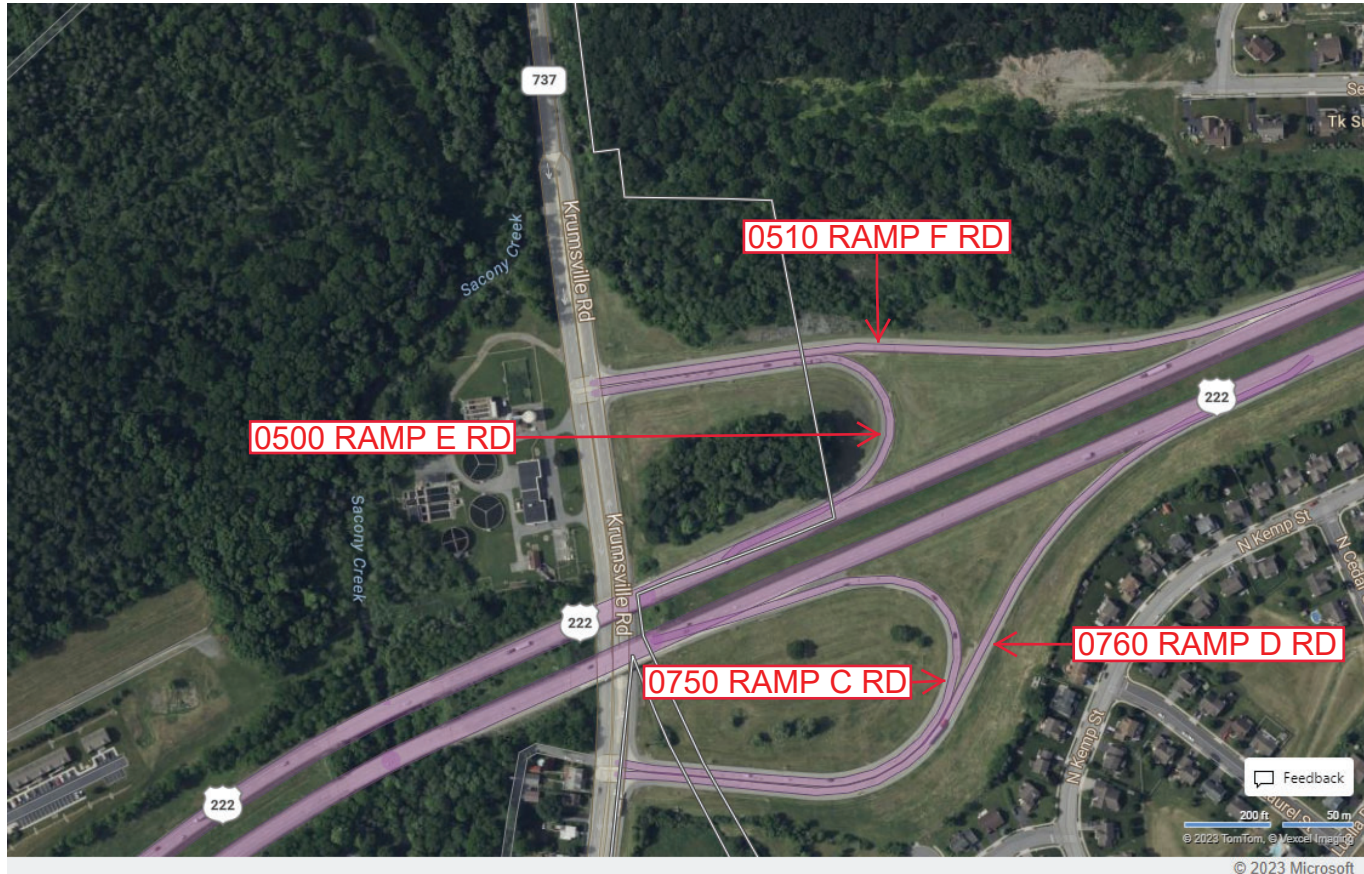
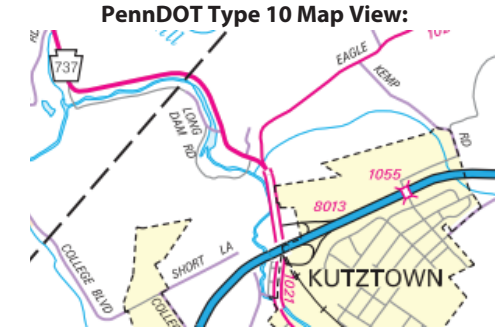
Intersecting SR's: US 222 & PA 737 Krumsville Rd

Ramp Segment Number and Ramp Segment Length Information:

Segment	Length	Segment	Length	Segment	Length	Segment	Length
0500	0963						
0510	1459						
0750	1383						
0760	1628						

Primary Route Interchange Exit Number

Secondary Route Interchange Exit Number



Feedback

200 ft 50 m

© 2023 Microsoft

Last Date Modified:

Aug 10, 2023

County: 06

RMS Interchange Information

Print Form

Interchange Number: 8014

Bureau of Maintenance & Operations
Asset Management Division



Interchange Name: POTTSDVILLE & READING INT

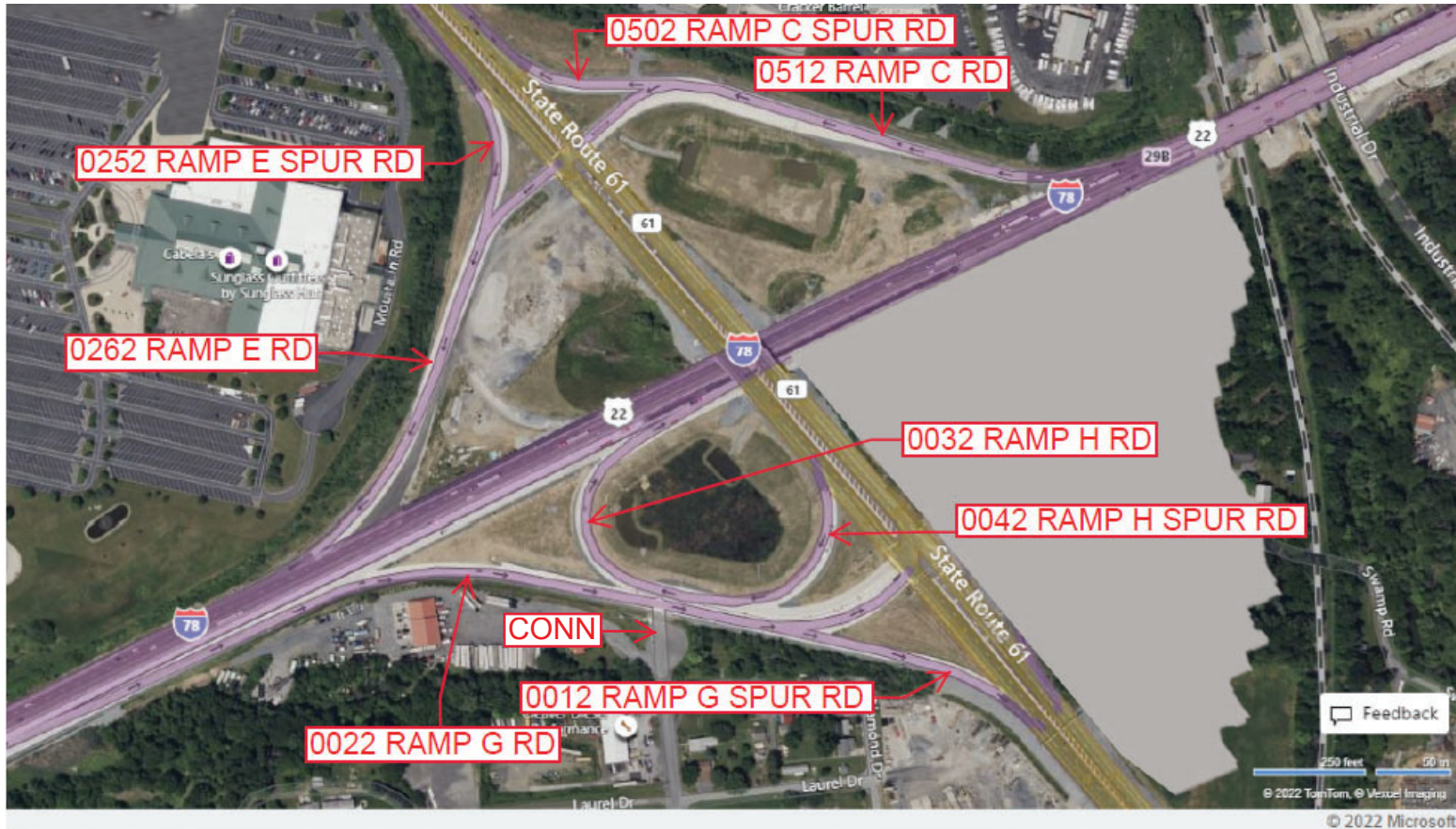
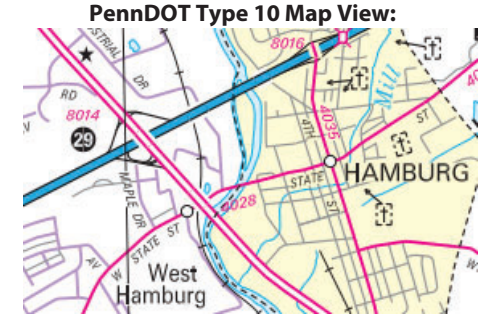
Intersecting SR's: I-78 & PA 61

Ramp Segment Number and Ramp Segment Length Information:

Segment	Length	Segment	Length	Segment	Length	Segment	Length
0012	0391	0262	0887				
0022	1272	0502	0271				
0032	0920	0512	1128				
0042	0314						
0252	0288						

Primary Route Interchange Exit Number: 29

Secondary Route Interchange Exit Number



Last Date Modified:

Aug 10, 2023

County: 06

RMS Interchange Information

Print Form

Interchange Number: 8015

Bureau of Maintenance & Operations
Asset Management Division



Interchange Name: KUTZTOWN INT

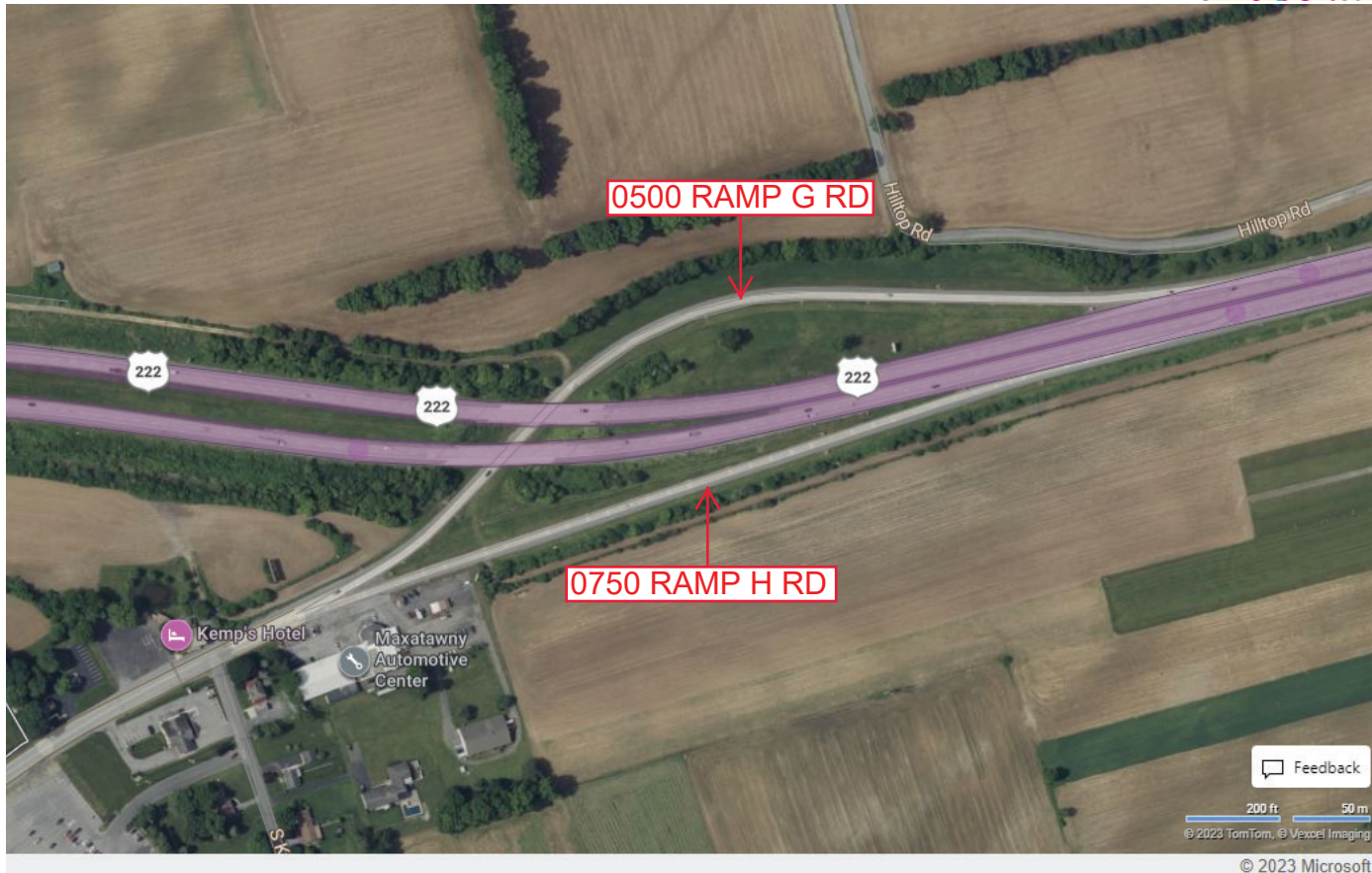
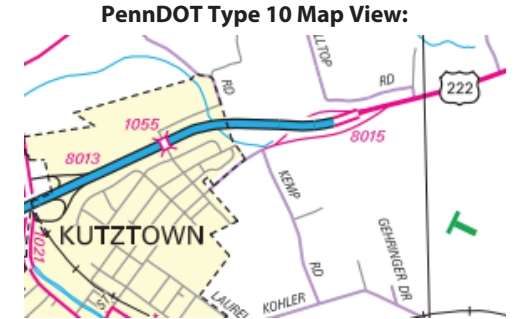
Intersecting SR's: US 222 & T948 Kutztown Rd

Ramp Segment Number and Ramp Segment Length Information:

Segment	Length	Segment	Length	Segment	Length	Segment	Length
0500	1856						
0750	1534						

Primary Route Interchange Exit Number

Secondary Route Interchange Exit Number



Feedback
200 ft 50 m
© 2023 TomTom, © Vexcel Imaging
© 2023 Microsoft

Last Date Modified: Oct 23, 2024

County: 06

RMS Interchange Information

Print Form

Interchange Number: 8016

Bureau of Maintenance & Operations
Asset Management Division



Interchange Name: HAMBURG INT

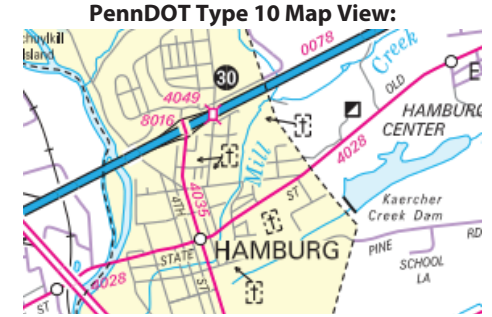
Intersecting SR's: I-78 & SR 4035 North Fourth St

Ramp Segment Number and Ramp Segment Length Information:

Segment	Length	Segment	Length	Segment	Length	Segment	Length
0010	0527						
0250	0537						
0500	0515						
0750	0468						

Primary Route Interchange Exit Number: 30

Secondary Route Interchange Exit Number



Last Date Modified: Aug 14, 2023

County: 06

RMS Interchange Information

Print Form

Interchange Number: 8018

Bureau of Maintenance & Operations
Asset Management Division



Interchange Name: LENHARTSVILLE INT

Intersecting SR's: I-78 & PA 143 Willow St

Ramp Segment Number and Ramp Segment Length Information:

Segment	Length	Segment	Length	Segment	Length	Segment	Length
0010	0896						
0020	0695						
0250	0739						
0260	0530						

Primary Route Interchange Exit Number: 35

Secondary Route Interchange Exit Number:

PennDOT Type 10 Map View:



Last Date Modified: Aug 14, 2023

County: 06

RMS Interchange Information

Print Form

Interchange Number: 8020

Bureau of Maintenance & Operations
Asset Management Division



Interchange Name: KUTZTOWN INT

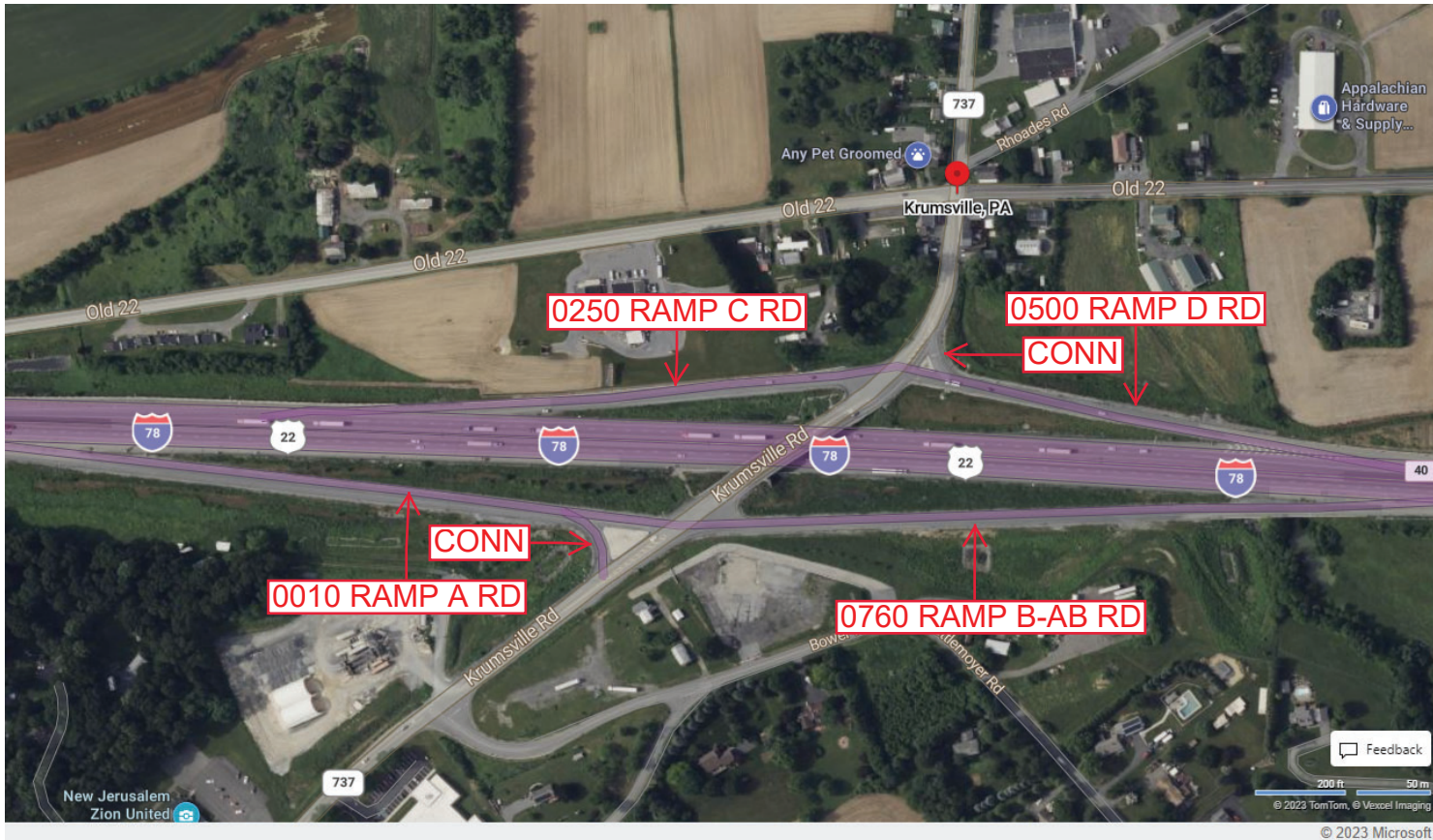
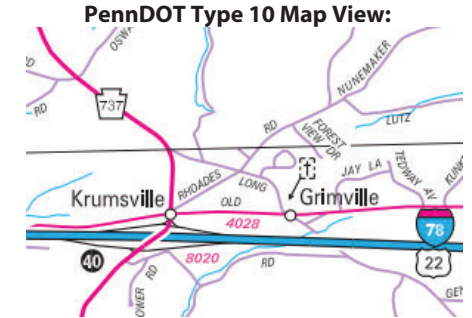
Intersecting SR's: I-78 & PA 737 Krumsville Rd

Ramp Segment Number and Ramp Segment Length Information:

Segment	Length	Segment	Length	Segment	Length	Segment	Length
0010	1308						
0250	0812						
0500	0740						
0760	1365						

Primary Route Interchange Exit Number: 40

Secondary Route Interchange Exit Number



County: 06

RMS Interchange Information

Print Form

Interchange Number: 8022

Bureau of Maintenance & Operations
Asset Management Division



Interchange Name: BERVILLE RD & STRUASS INT

Intersecting SR's: US 222 & PA 183 Bernville Rd

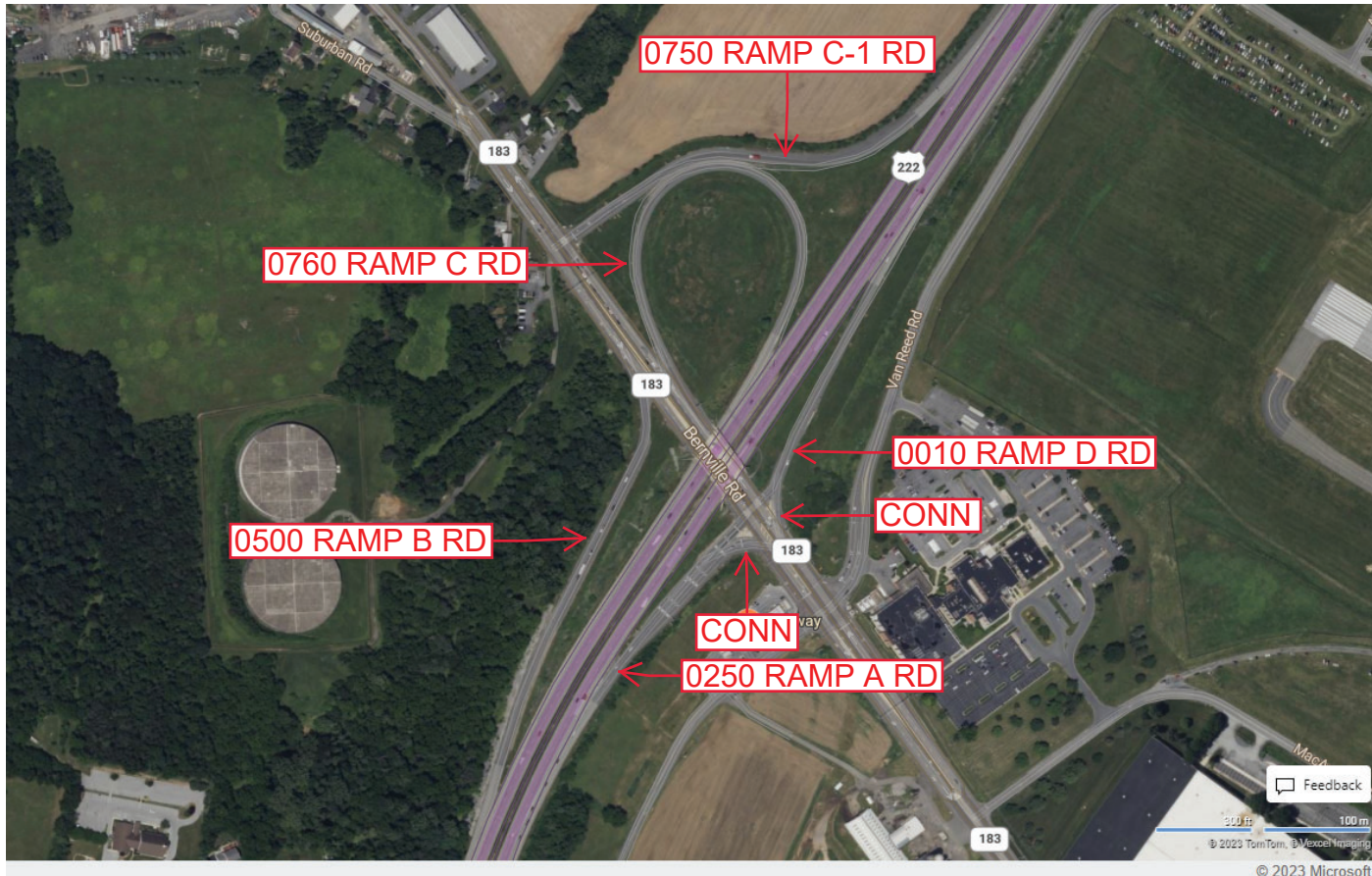
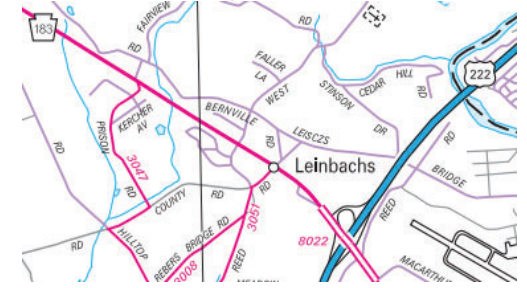
Ramp Segment Number and Ramp Segment Length Information:

Segment	Length	Segment	Length	Segment	Length	Segment	Length
0010	0806						
0250	0663						
0500	1383						
0750	1413						
0760	1518						

Primary Route
Interchange Exit
Number

Secondary Route
Interchange Exit
Number

PennDOT Type 10 Map View:



Last Date Modified:

Aug 14, 2023

County: 06

RMS Interchange Information

Bureau of Maintenance & Operations
Asset Management Division

Print Form



Interchange Number: 8024

Interchange Name: TUCKERTON & POTTSVILLE INT

Intersecting SR's: US 222 & PA 61 Pottsville Pk

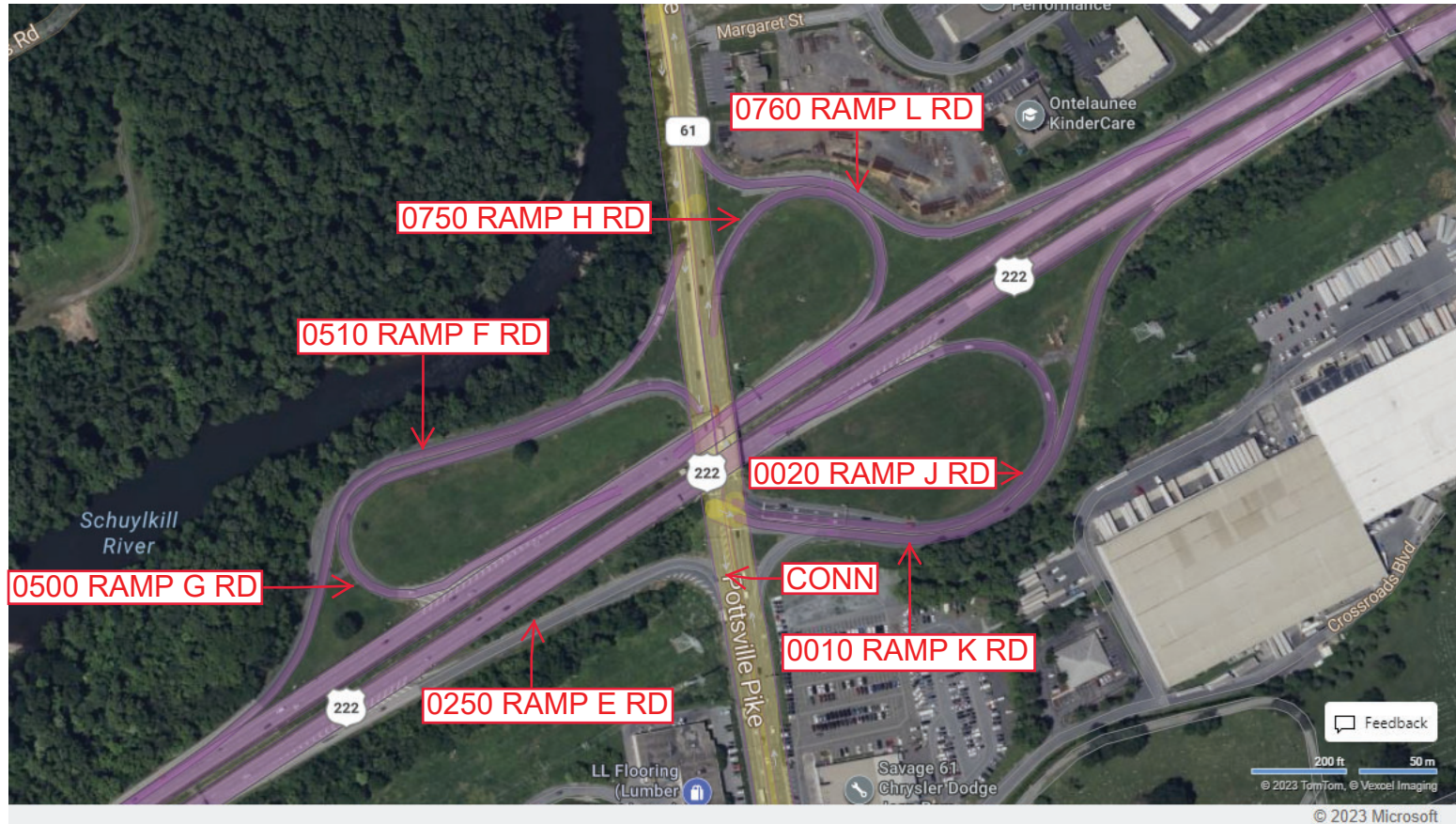
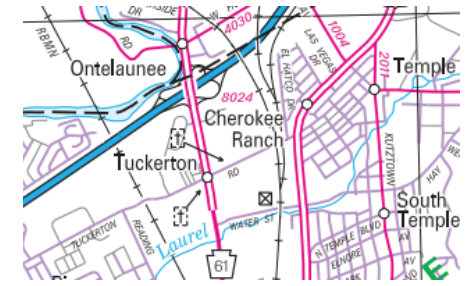
Ramp Segment Number and Ramp Segment Length Information:

Segment	Length	Segment	Length	Segment	Length	Segment	Length
0010	1302	0750	0633				
0020	1100	0760	0794				
0250	0698						
0500	1086						
0510	1390						

Primary Route
Interchange Exit
Number

Secondary Route
Interchange Exit
Number

PennDOT Type 10 Map View:



Last Date Modified:

Oct 22, 2024

County: 06

RMS Interchange Information

Print Form

Interchange Number: 8026

Bureau of Maintenance & Operations
Asset Management Division



Interchange Name: LAURELDALE & ALLENTOWN INT

Intersecting SR's: US 222 & SR 2005 AllentownPk

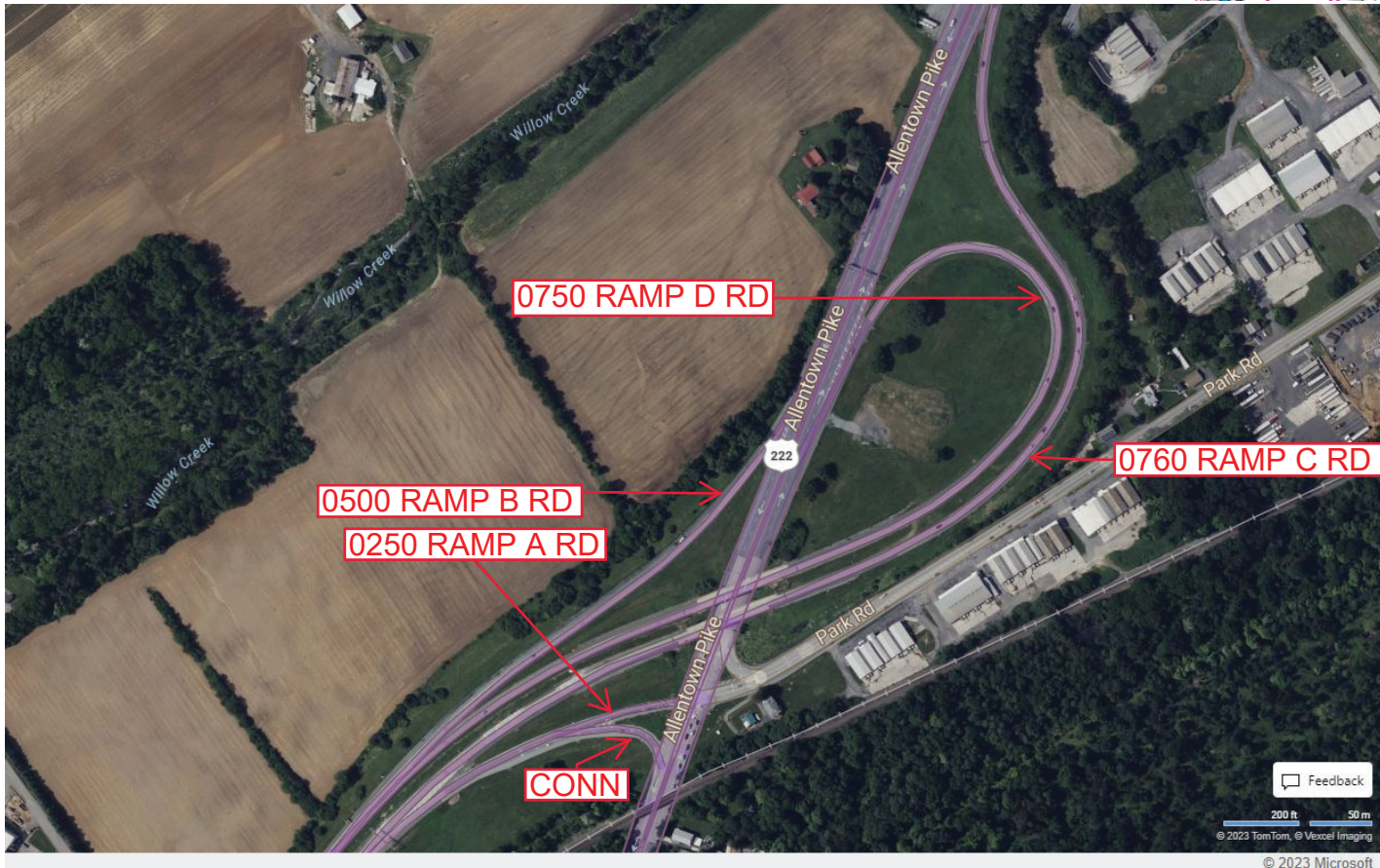
Ramp Segment Number and Ramp Segment Length Information:

Segment	Length	Segment	Length	Segment	Length	Segment	Length
0250	0634						
0500	1130						
0750	1817						
0760	2143						

Primary Route
Interchange Exit
Number

Secondary Route
Interchange Exit
Number

PennDOT Type 10 Map View:



Feedback

200 ft 50 m

© 2023 TomTom, © Vexcel Imaging

© 2023 Microsoft

Last Date Modified:

Aug 15, 2023

County: 06

RMS Interchange Information

Print Form

Interchange Number: 8028

Bureau of Maintenance & Operations
Asset Management Division



Interchange Name: WEST LAWN & WYOMISSING INT

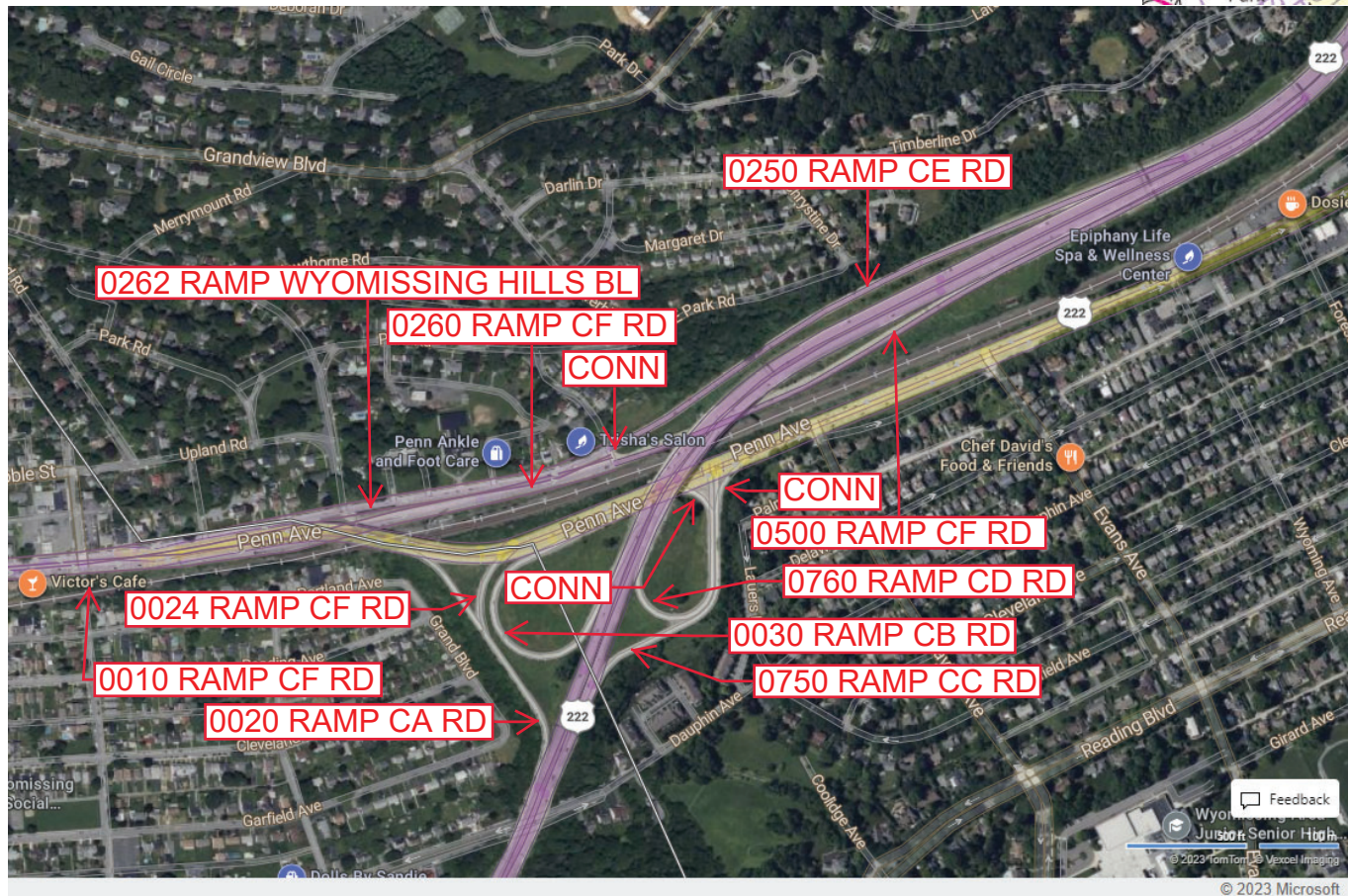
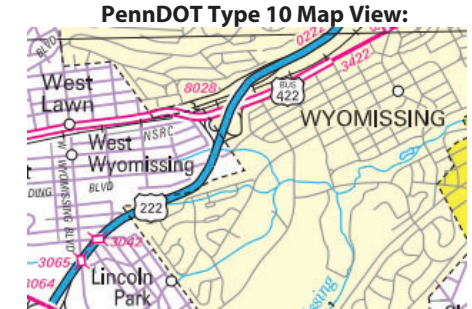
Intersecting SR's: US 222 & US 422 Penn Av

Ramp Segment Number and Ramp Segment Length Information:

Segment	Length	Segment	Length	Segment	Length	Segment	Length
0010	0644	0260	1639				
0020	0917	0262	0345				
0024	0247	0500	1092				
0030	0896	0750	1073				
0250	4016	0760	0949				

Primary Route
Interchange Exit
Number

Secondary Route
Interchange Exit
Number



Last Date Modified:

Aug 16, 2023

County: 06

RMS Interchange Information

Print Form

Interchange Number: 8030

Bureau of Maintenance & Operations
Asset Management Division



Interchange Name: WYOMISSING INT

Intersecting SR's: US 222 & SR 3023 State Hill Rd

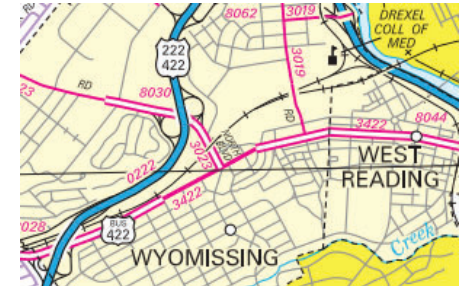
Ramp Segment Number and Ramp Segment Length Information:

Segment	Length	Segment	Length	Segment	Length	Segment	Length
0250	1196	0764	0256				
0254	0279						
0260	1077						
0750	1238						
0760	1318						

Primary Route Interchange Exit Number

Secondary Route Interchange Exit Number

PennDOT Type 10 Map View:



County: 06

RMS Interchange Information

Print Form

Interchange Number: 8032

Bureau of Maintenance & Operations
Asset Management Division



Interchange Name: RIVER ROAD INT

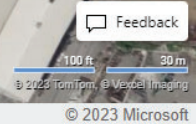
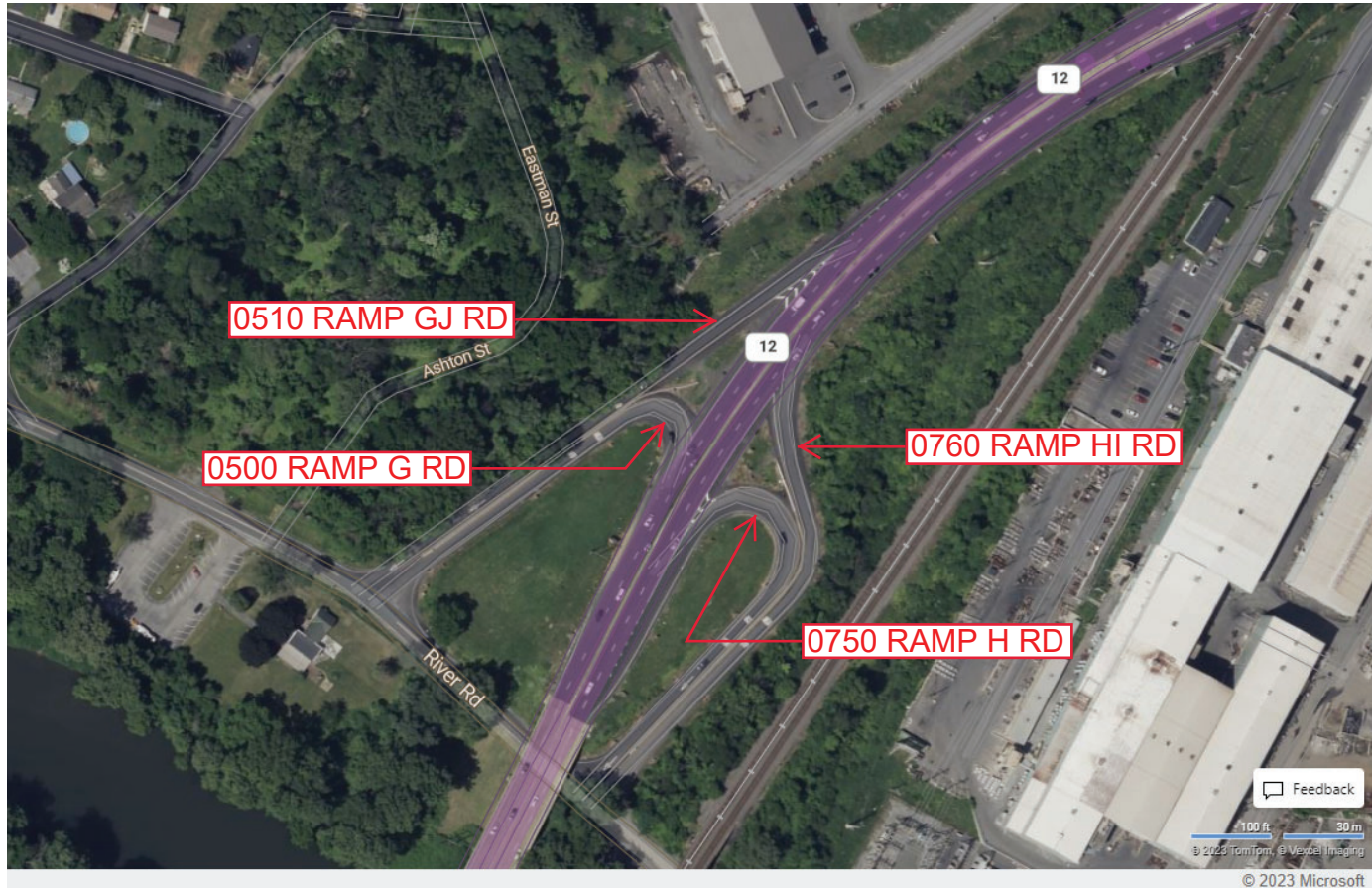
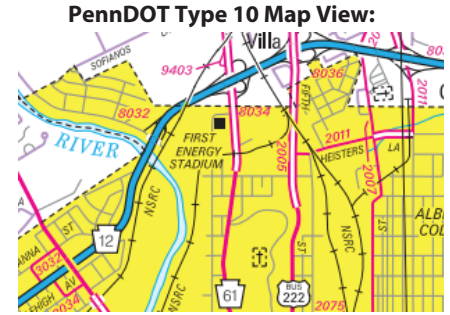
Intersecting SR's: PA 12 Warren St Bp & CITY River Rd

Ramp Segment Number and Ramp Segment Length Information:

Segment	Length	Segment	Length	Segment	Length	Segment	Length
0500	0470						
0510	0620						
0750	0518						
0760	0590						

Primary Route Interchange Exit Number

Secondary Route Interchange Exit Number



Last Date Modified:

Aug 16, 2023

County: 06

RMS Interchange Information

Bureau of Maintenance & Operations
Asset Management Division

Print Form



Interchange Number: 8034

Interchange Name: MUHLENBERG PARK INT

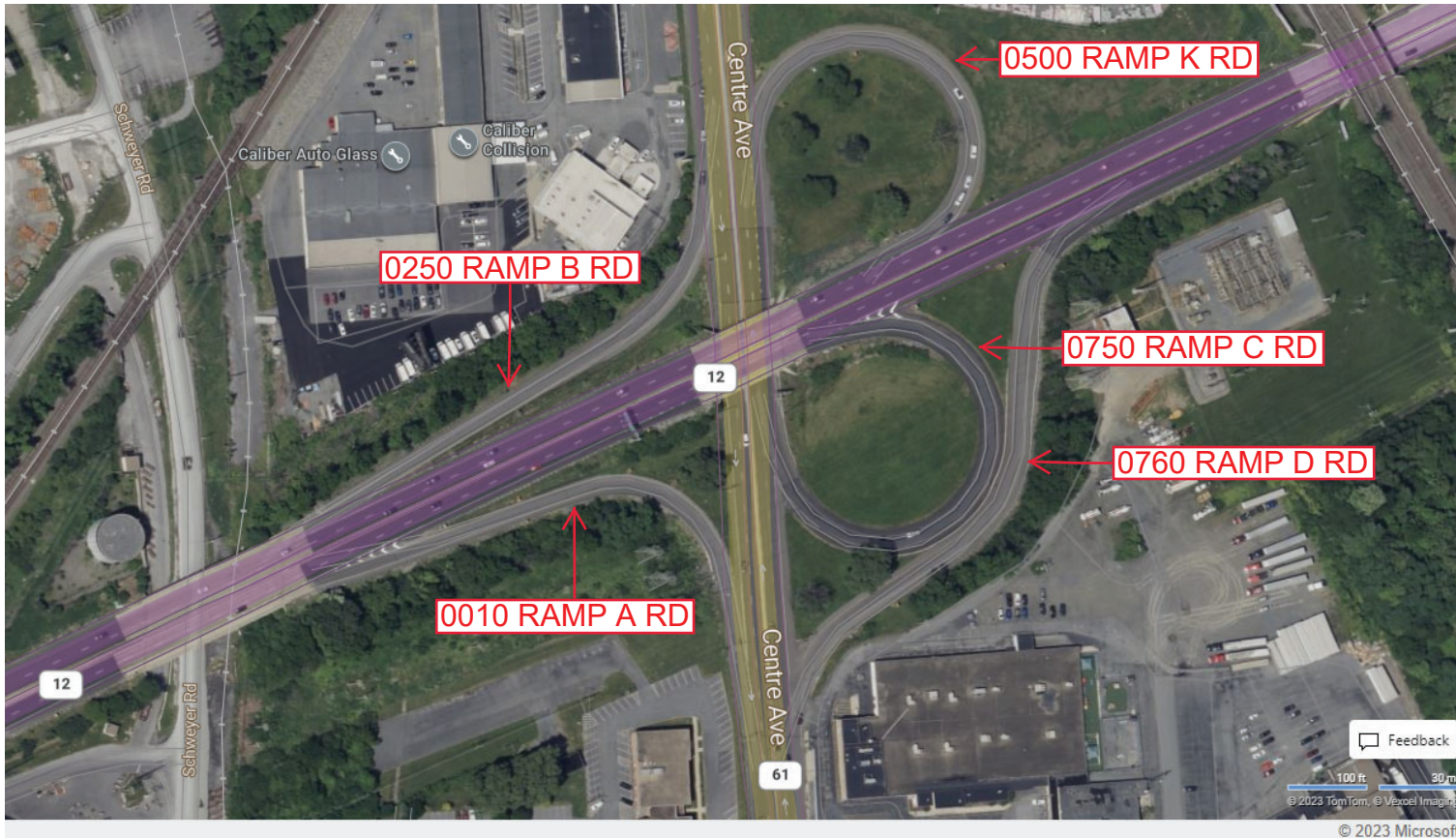
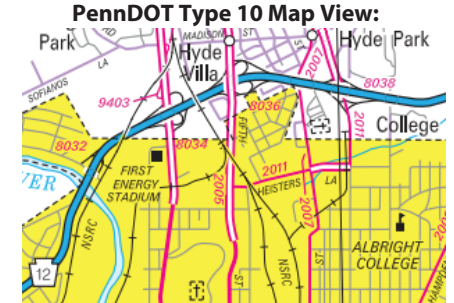
Intersecting SR's: PA 12 Warren St Bp & PA 61 Pottsville Pk

Ramp Segment Number and Ramp Segment Length Information:

Segment	Length	Segment	Length	Segment	Length	Segment	Length
0010	0480						
0250	0523						
0500	0447						
0750	0536						
0760	0639						

Primary Route Interchange Exit Number

Secondary Route Interchange Exit Number



Last Date Modified:

Aug 22, 2023

County: 06

RMS Interchange Information

Print Form

Interchange Number: 8036

Bureau of Maintenance & Operations
Asset Management Division



Interchange Name: HYDE VILLA INT

Intersecting SR's: PA 12 Warren St Bp & SR 2005 N Fifth St

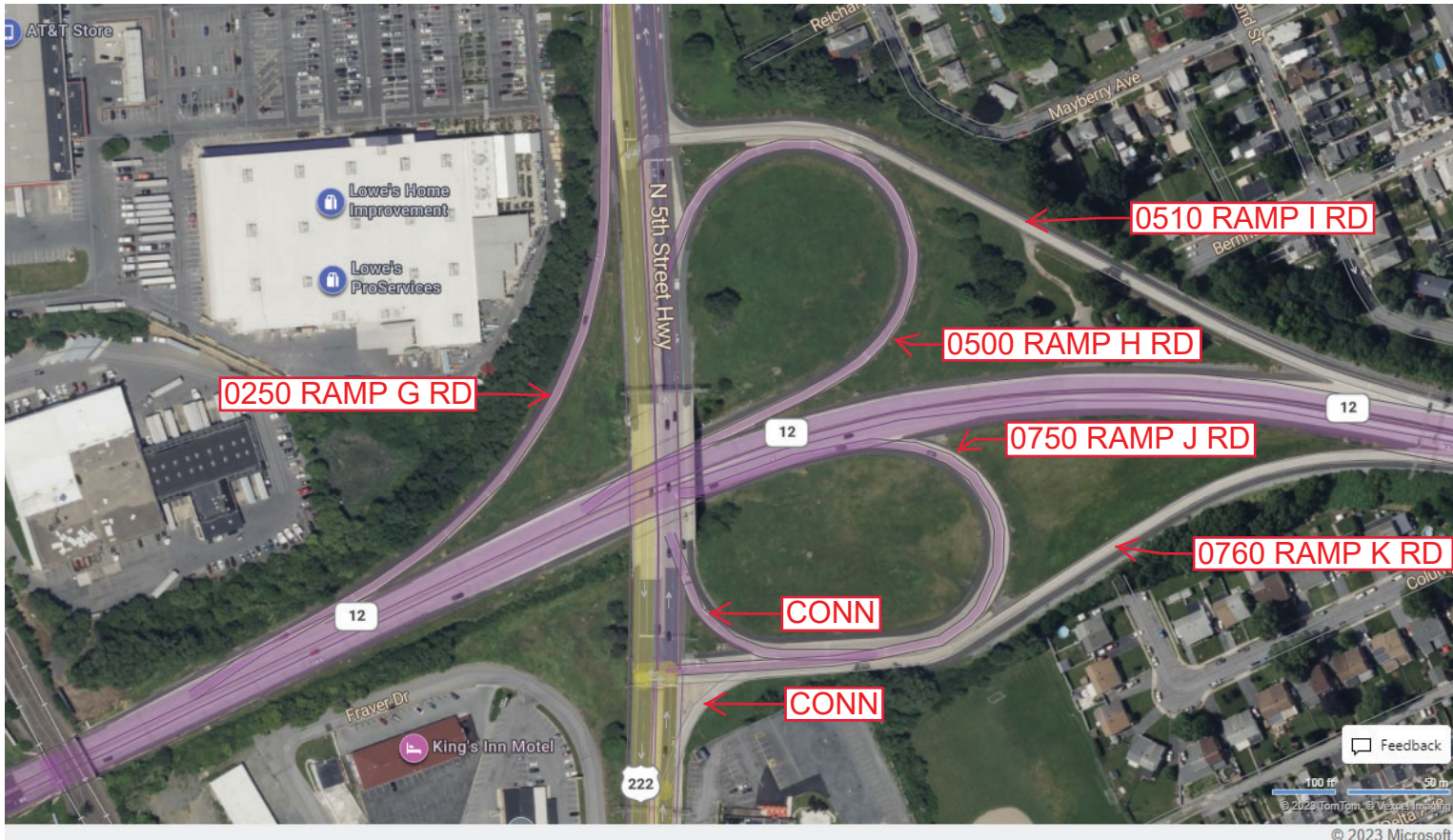
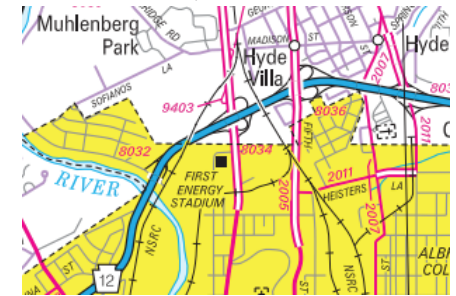
Ramp Segment Number and Ramp Segment Length Information:

Segment	Length	Segment	Length	Segment	Length	Segment	Length
0250	0795						
0500	0856						
0510	1111						
0750	0801						
0760	1263						

Primary Route Interchange Exit Number

Secondary Route Interchange Exit Number

PennDOT Type 10 Map View:



Last Date Modified: Aug 23, 2023

County: 06

RMS Interchange Information

Print Form

Interchange Number: 8038

Bureau of Maintenance & Operations
Asset Management Division



Interchange Name: HYDE PARK INT

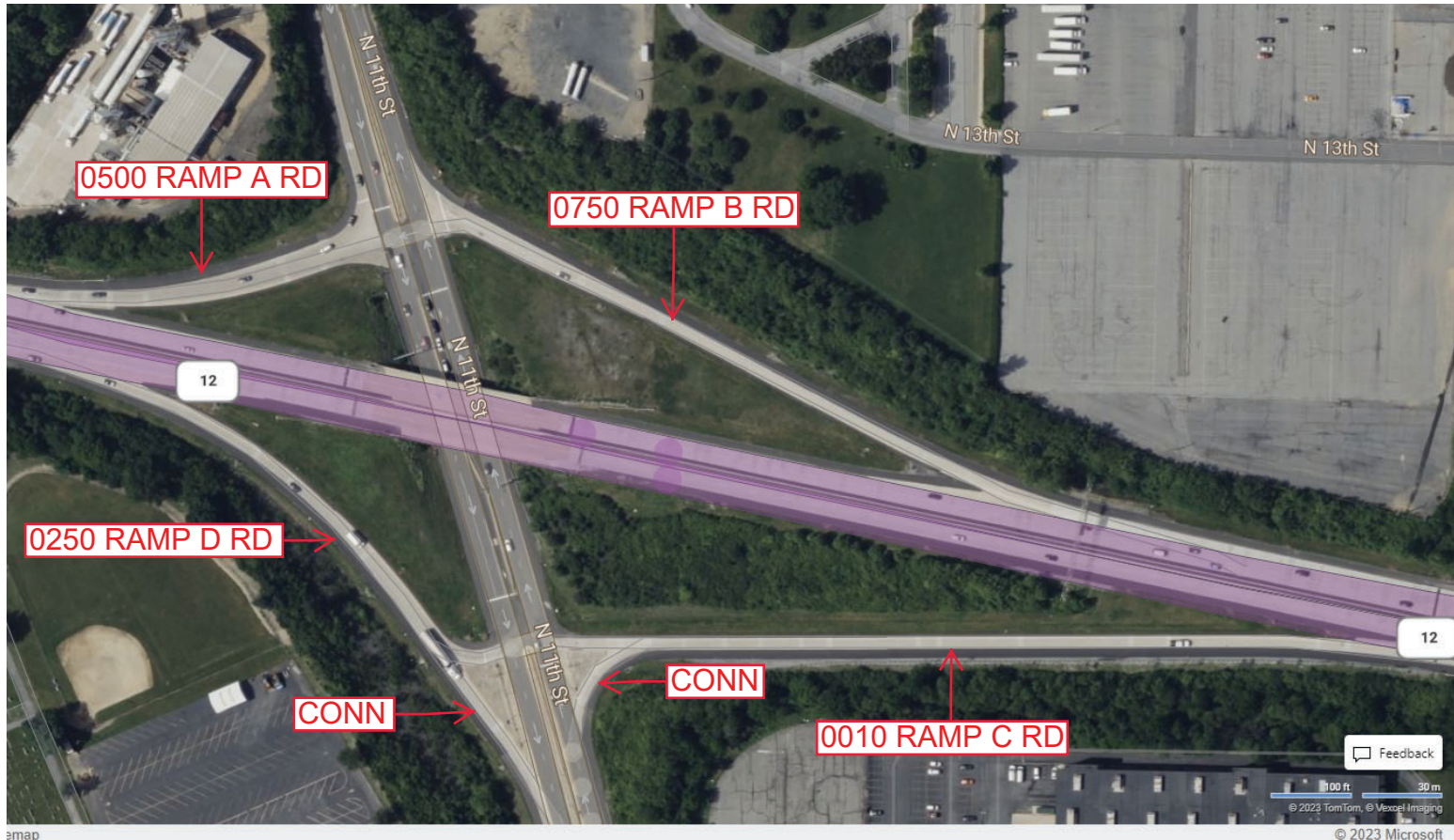
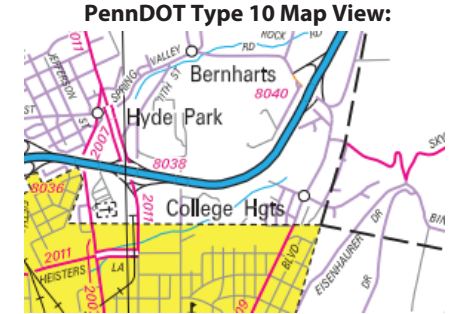
Intersecting SR's: PA 12 Warren St Bp & SR 2011 Eleventh St

Ramp Segment Number and Ramp Segment Length Information:

Segment	Length	Segment	Length	Segment	Length	Segment	Length
0010	1002						
0250	0535						
0500	0325						
0750	0736						

Primary Route Interchange Exit Number

Secondary Route Interchange Exit Number



Last Date Modified: Aug 23, 2023

County: 06

RMS Interchange Information

Print Form

Interchange Number: 8040

Bureau of Maintenance & Operations
Asset Management Division



Interchange Name: COLLEGE HEIGHTS INT

Intersecting SR's: PA 12 Warren St Bp & T413 Spring Valley Rd

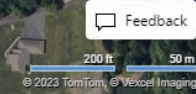
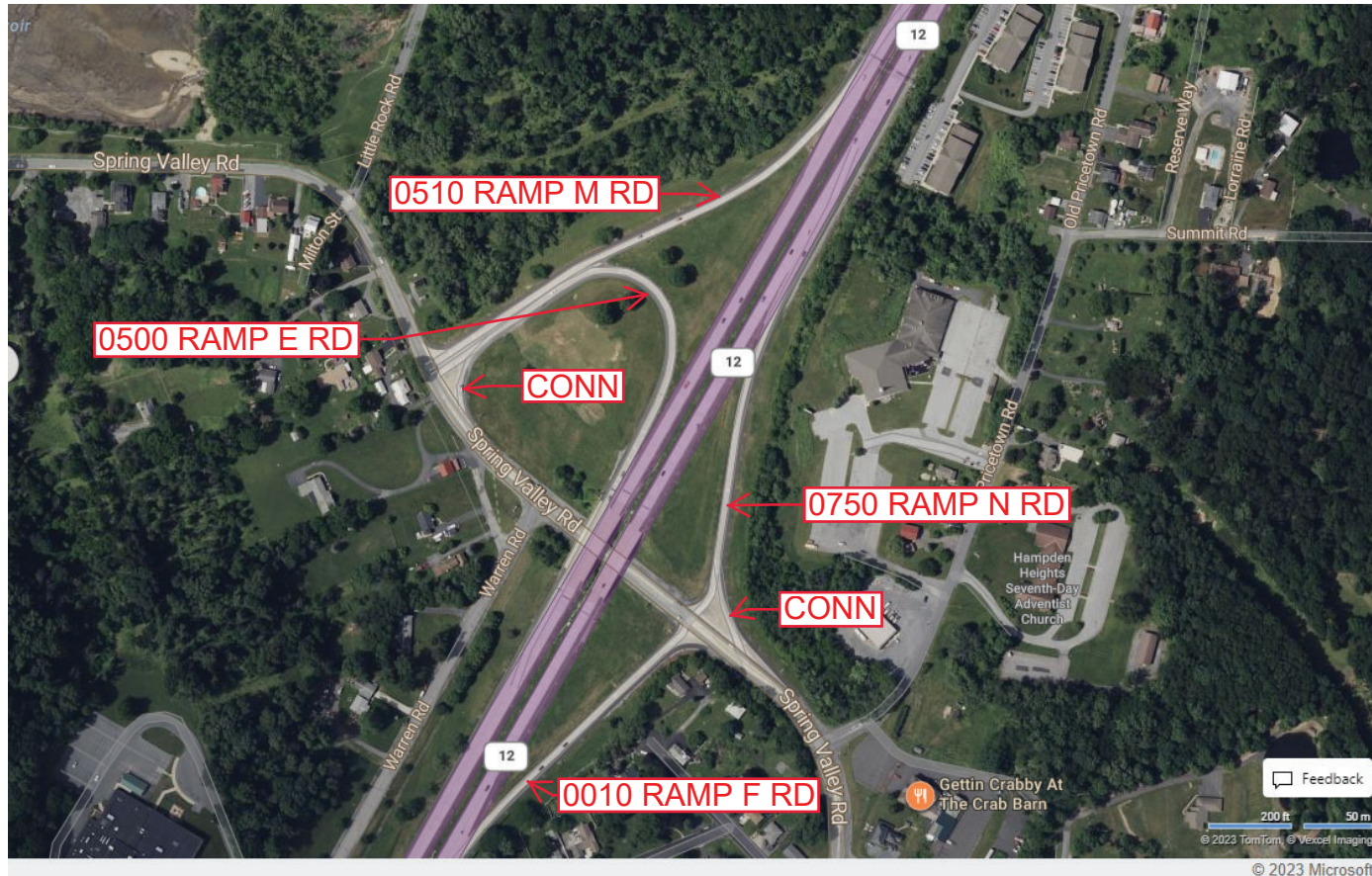
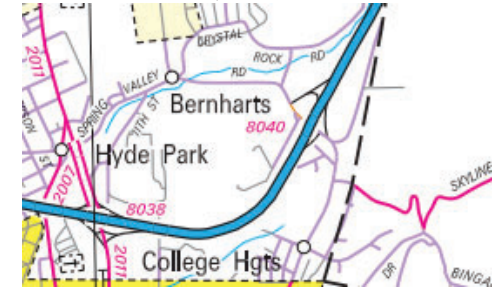
Ramp Segment Number and Ramp Segment Length Information:

Segment	Length	Segment	Length	Segment	Length	Segment	Length
0010	0685						
0500	1059						
0510	1103						
0750	0758						

Primary Route Interchange Exit Number

Secondary Route Interchange Exit Number

PennDOT Type 10 Map View:



© 2023 Microsoft

Last Date Modified:

Aug 24, 2023

County: 06

RMS Interchange Information

Print Form

Interchange Number: 8042

Bureau of Maintenance & Operations
Asset Management Division



Interchange Name: PARK ROAD EAST INT

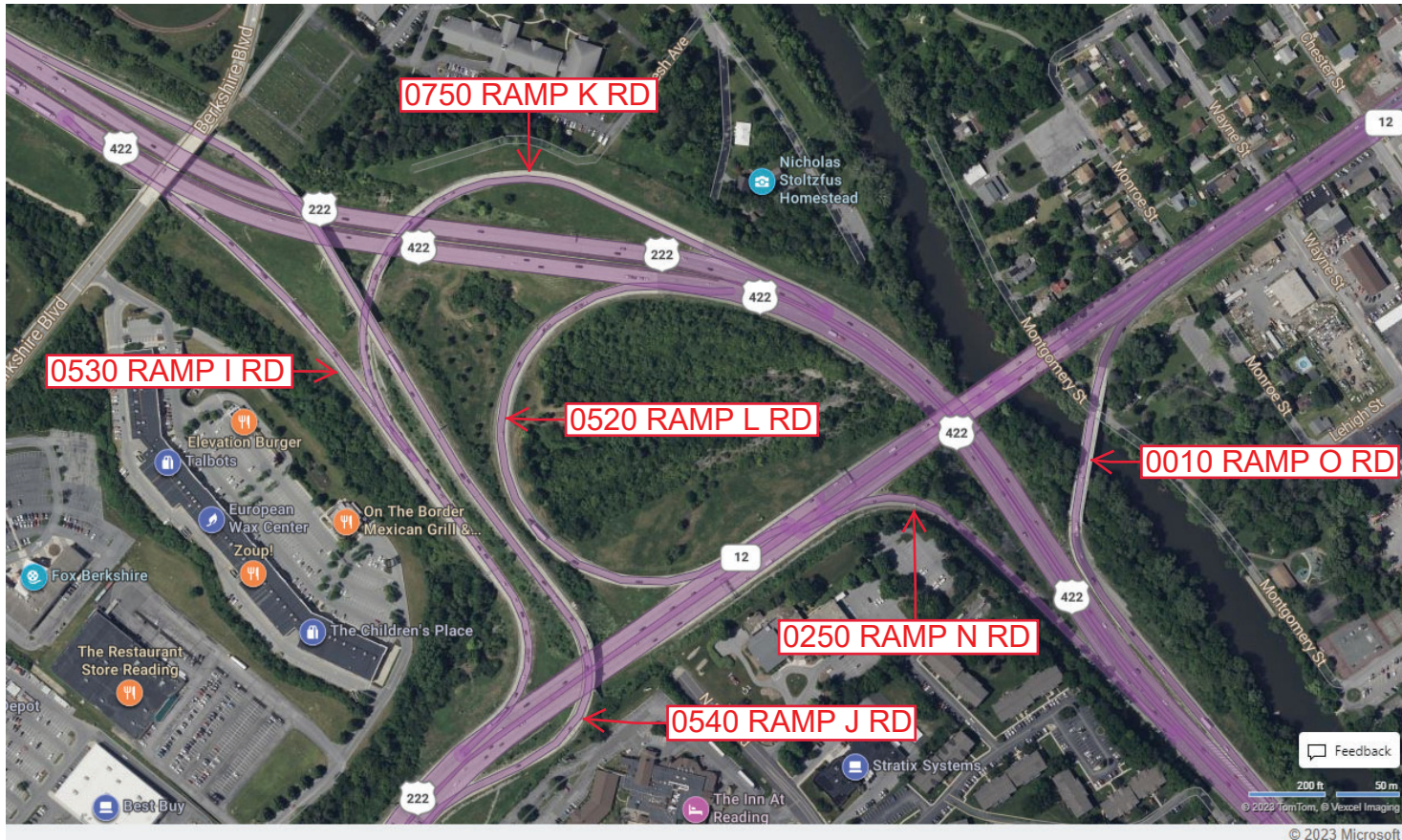
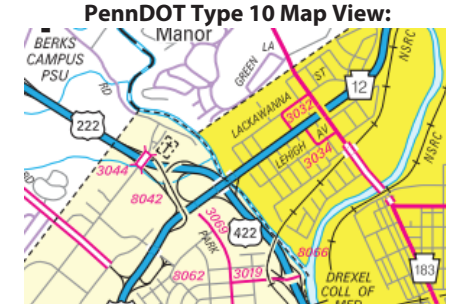
Intersecting SR's: US 222, US 422 & PA 12 Warren St

Ramp Segment Number and Ramp Segment Length Information:

Segment	Length	Segment	Length	Segment	Length	Segment	Length
0010	1203	0750	2291				
0250	0722						
0520	1261						
0530	0671						
0540	2665						

Primary Route Interchange Exit Number

Secondary Route Interchange Exit Number



Last Date Modified:

Oct 23, 2024

County: 06

RMS Interchange Information

Print Form

Interchange Number: 8044

Bureau of Maintenance & Operations
Asset Management Division



Interchange Name: WEST READING INT

Intersecting SR's: US 422 & SR 3422 Penn Av

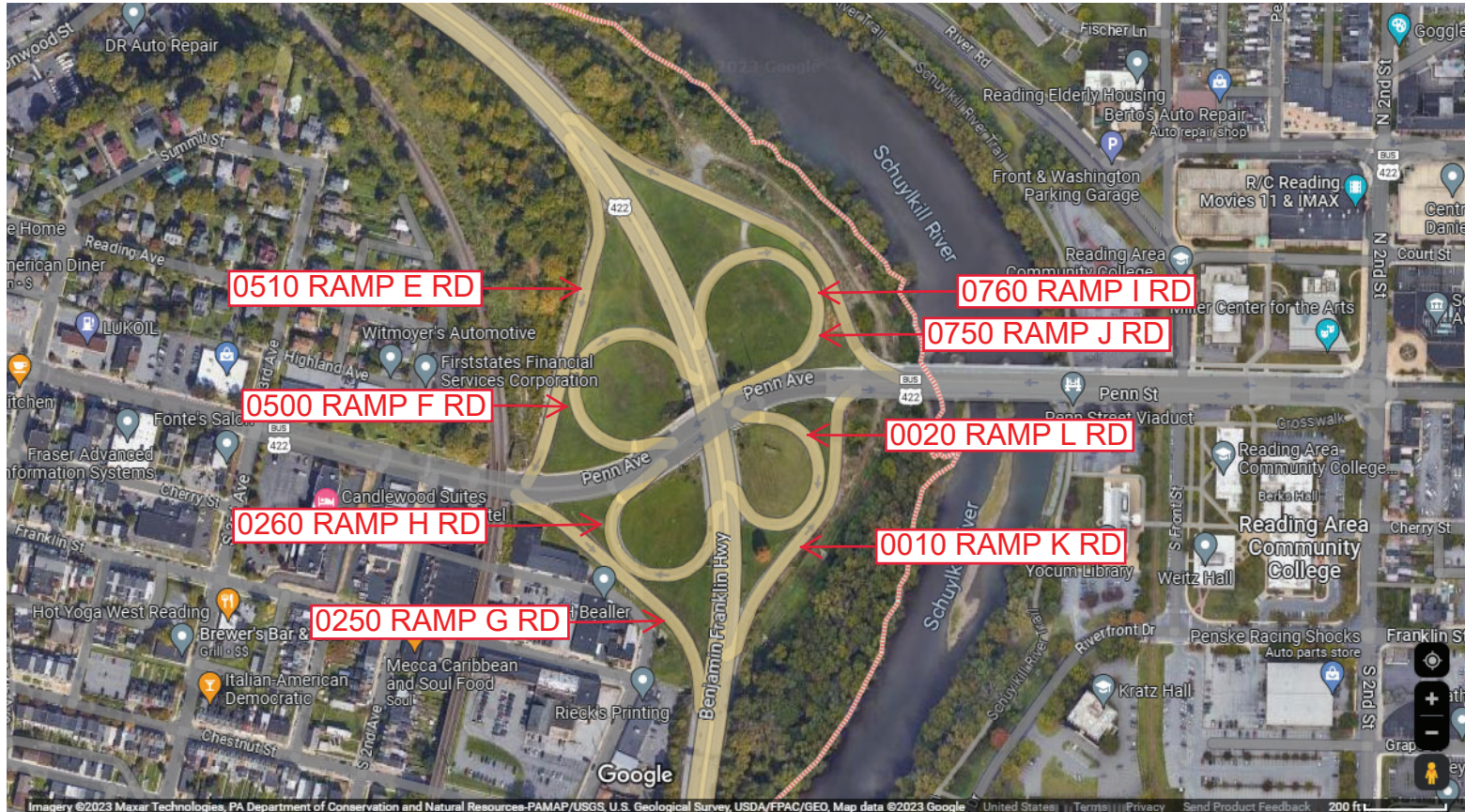
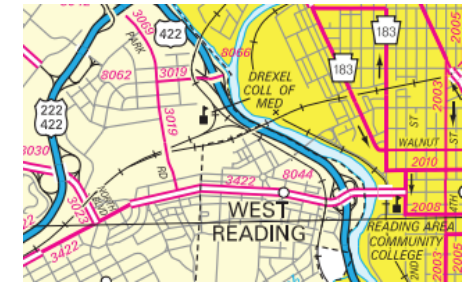
Ramp Segment Number and Ramp Segment Length Information:

Segment	Length	Segment	Length	Segment	Length	Segment	Length
0010	0603	0510	0699				
0020	0457	0750	0639				
0250	0576	0760	0868				
0260	0434						
0500	0548						

Primary Route Interchange Exit Number

Secondary Route Interchange Exit Number

PennDOT Type 10 Map View:



Last Date Modified:

Aug 24, 2023

County: 06

RMS Interchange Information

Bureau of Maintenance & Operations
Asset Management Division

Print Form



Interchange Number: 8046

Interchange Name: BINGAMAN ST INT

Intersecting SR's: US 422, SR 2005 Bingaman St & SR 3222 Lancaster Av

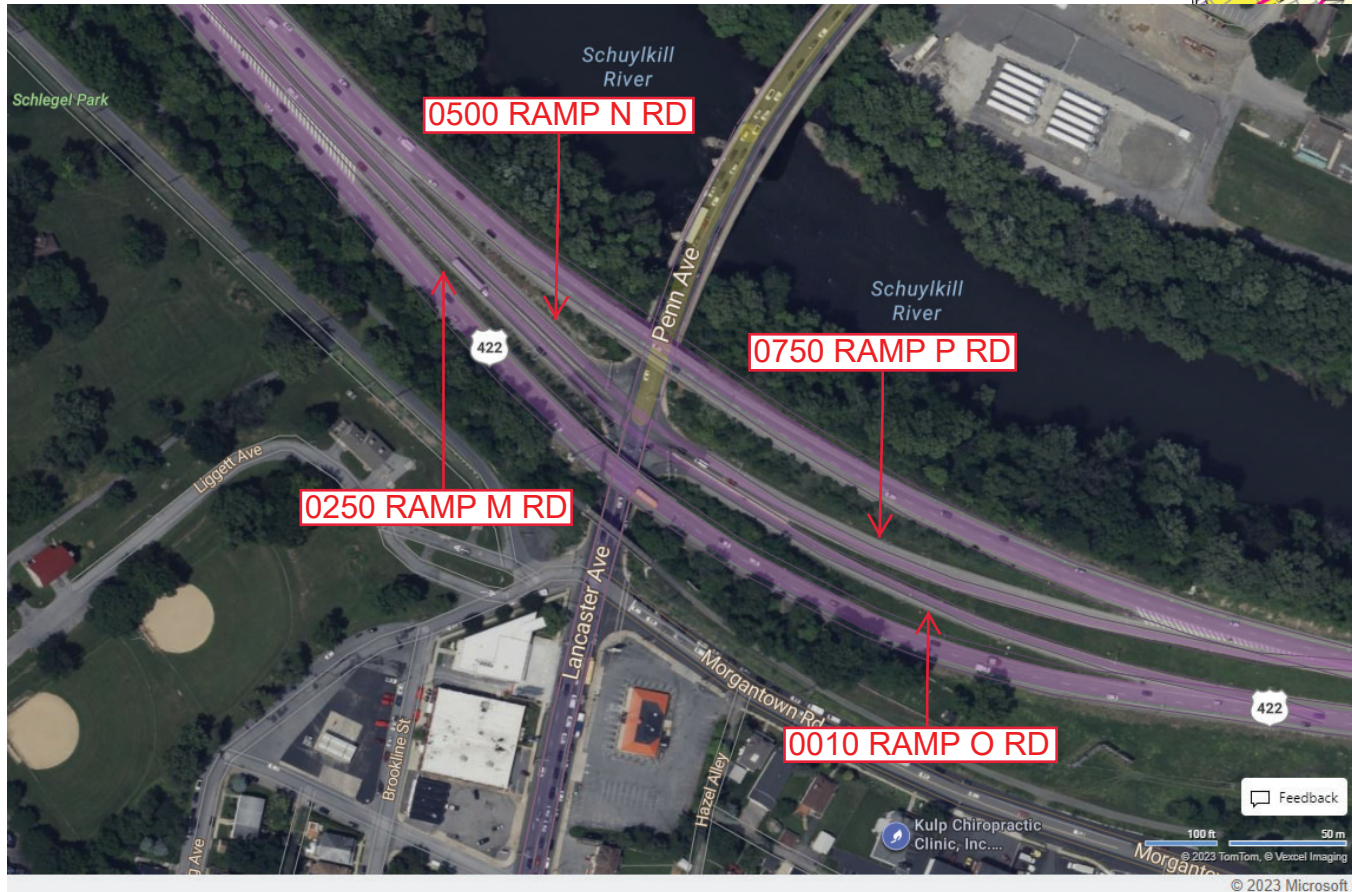
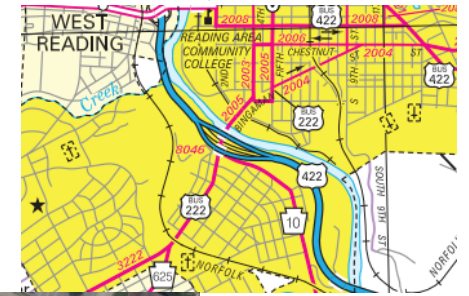
Ramp Segment Number and Ramp Segment Length Information:

Segment	Length	Segment	Length	Segment	Length	Segment	Length
0010	0763						
0250	0494						
0500	0433						
0750	0751						

Primary Route Interchange Exit Number

Secondary Route Interchange Exit Number

PennDOT Type 10 Map View:



Last Date Modified:

Oct 23, 2024

County: 06

RMS Interchange Information

Print Form

Interchange Number: 8048

Bureau of Maintenance & Operations
Asset Management Division



Interchange Name: MOUNT PENN INT

Intersecting SR's: US 422 & SR 2039 Neversink Rd

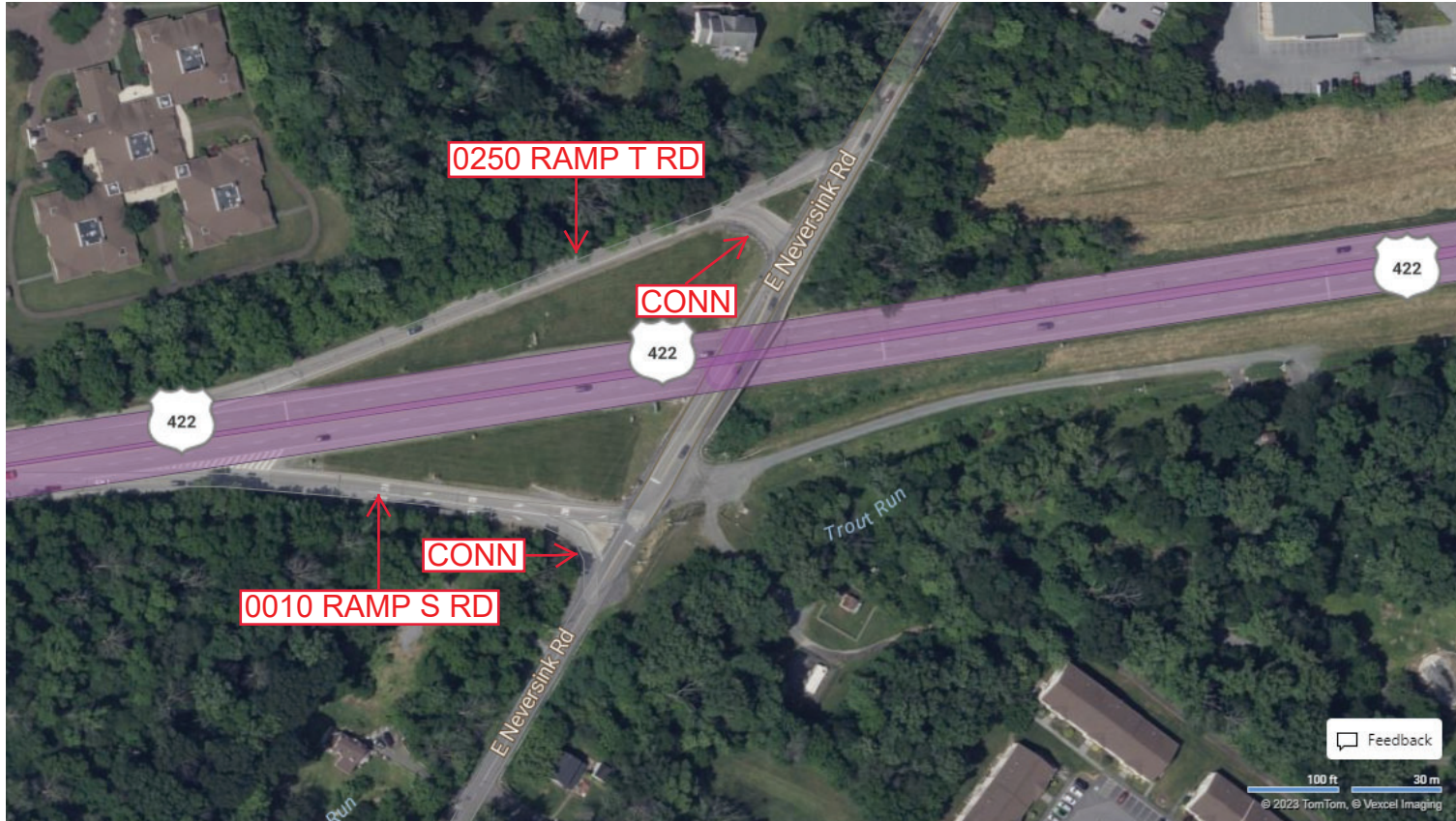
Ramp Segment Number and Ramp Segment Length Information:

Segment	Length	Segment	Length	Segment	Length	Segment	Length
0010	0352						
0250	0656						

Primary Route
Interchange Exit
Number

Secondary Route
Interchange Exit
Number

PennDOT Type 10 Map View:



Feedback

100 ft 30 m

© 2023 TomTom, © Vexcel Imaging

© 2023 Microsoft

Last Date Modified:

Aug 29, 2023

County: 06

RMS Interchange Information

Print Form

Interchange Number: 8050

Bureau of Maintenance & Operations
Asset Management Division



Interchange Name: SPRING RIDGE INT

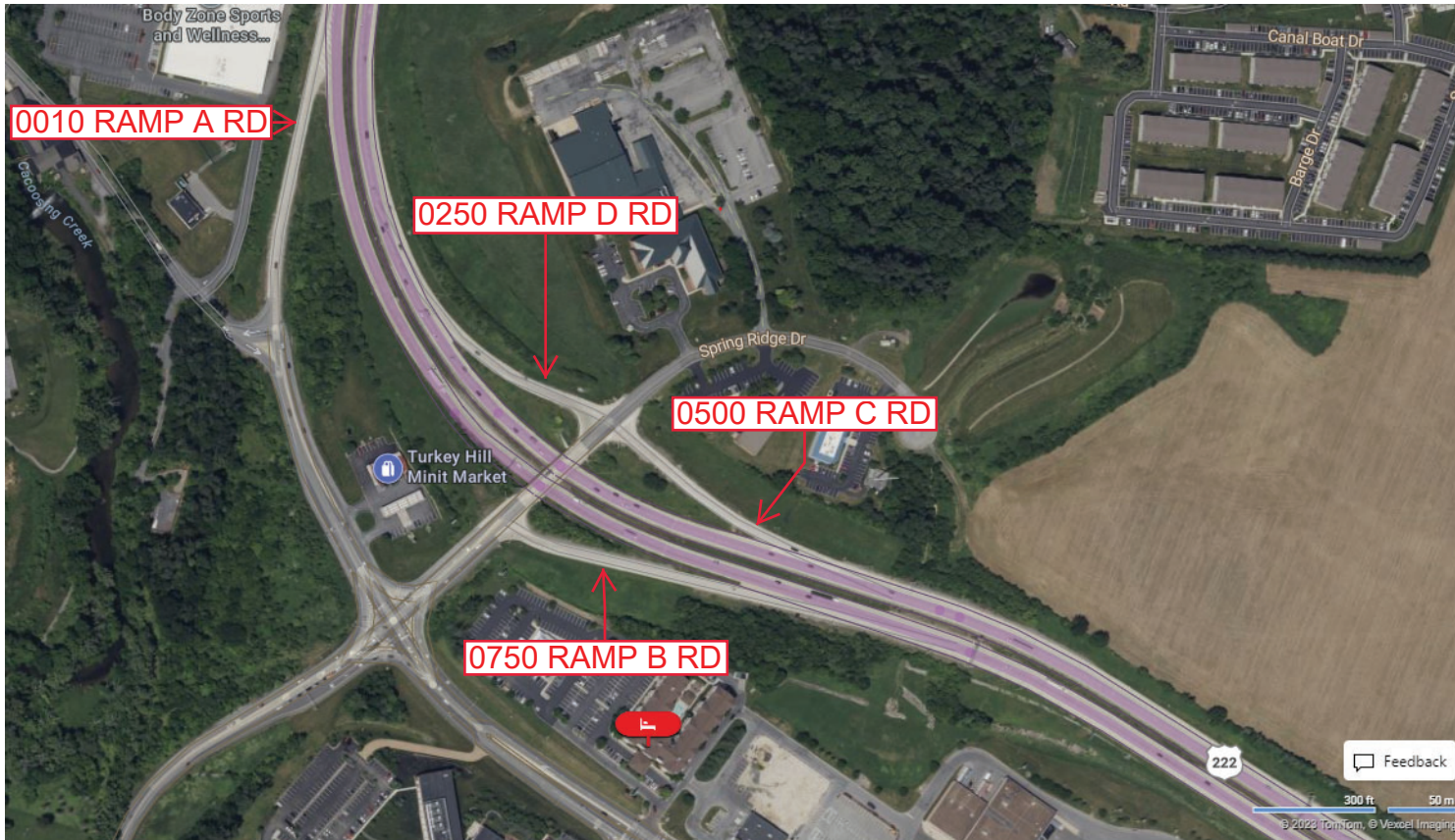
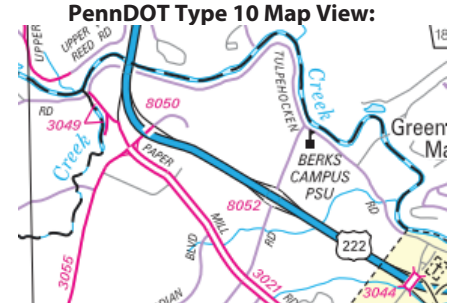
Intersecting SR's: US 222, SR 3021 Papermill Rd & SR 3055 Spring Ridge Dr

Ramp Segment Number and Ramp Segment Length Information:

Segment	Length	Segment	Length	Segment	Length	Segment	Length
0010	0646						
0250	0414						
0500	0434						
0750	0584						

Primary Route
Interchange Exit
Number

Secondary Route
Interchange Exit
Number



© 2023 Microsoft

Last Date Modified:

Aug 29, 2023

County: 06

RMS Interchange Information

Print Form

Interchange Number: 8052

Bureau of Maintenance & Operations
Asset Management Division



Interchange Name: BROADCASTING RD INT

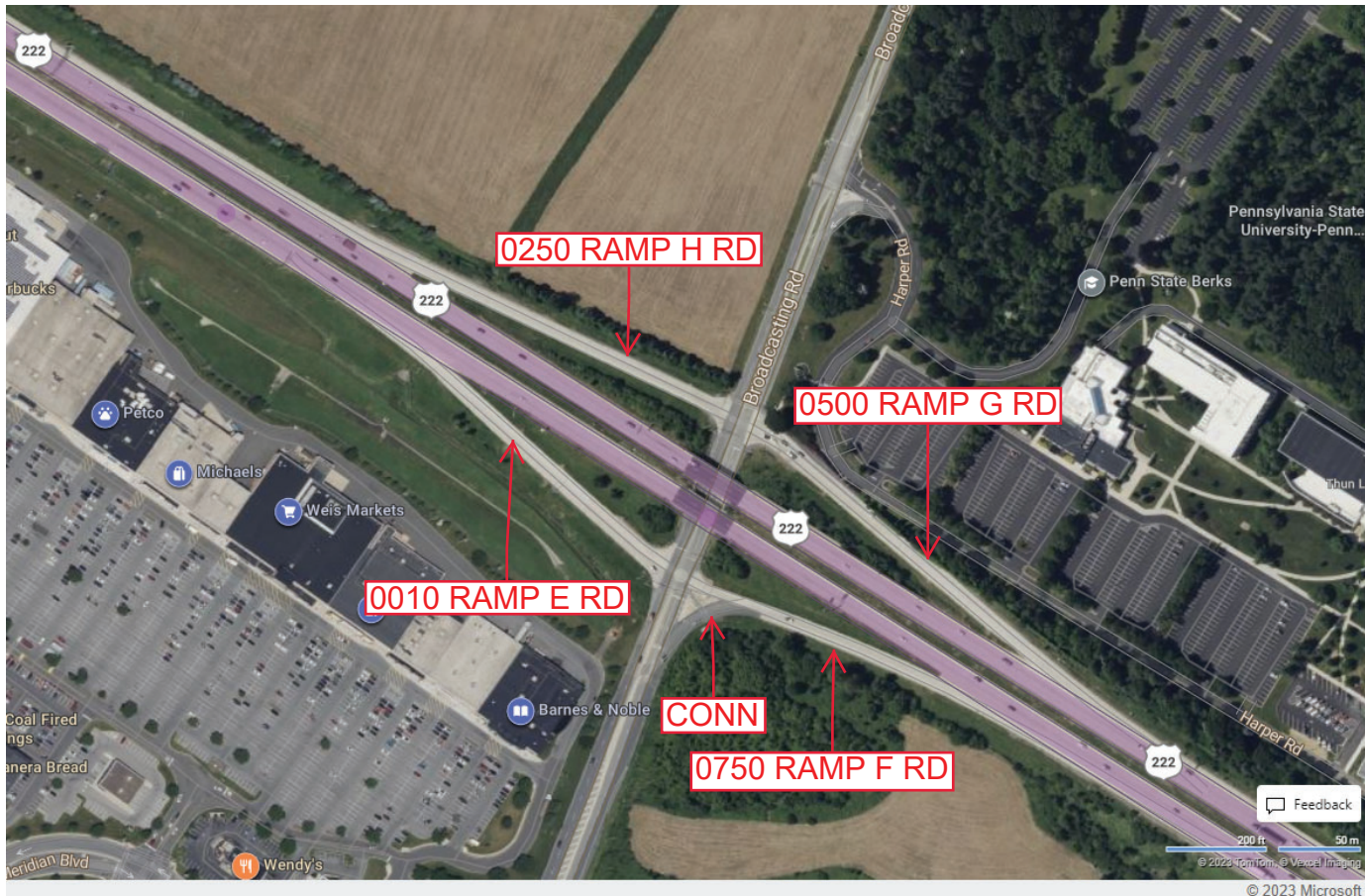
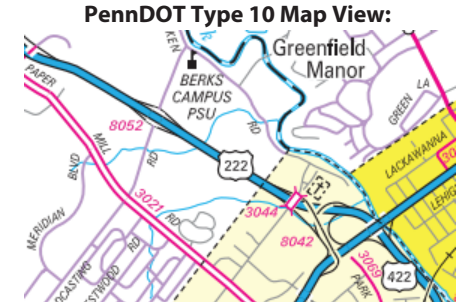
Intersecting SR's: US 222 & T702 Broadcasting Rd

Ramp Segment Number and Ramp Segment Length Information:

Segment	Length	Segment	Length	Segment	Length	Segment	Length
0010	0599						
0250	0704						
0500	0735						
0750	0549						

Primary Route Interchange Exit Number

Secondary Route Interchange Exit Number



Last Date Modified: Aug 30, 2023

County: 06

RMS Interchange Information

Bureau of Maintenance & Operations
Asset Management Division

Print Form



Interchange Number: 8054

Interchange Name: GOUGLERSVILLE INT

Intersecting SR's: US 222 & SR 3018 Mohn's Hill Rd

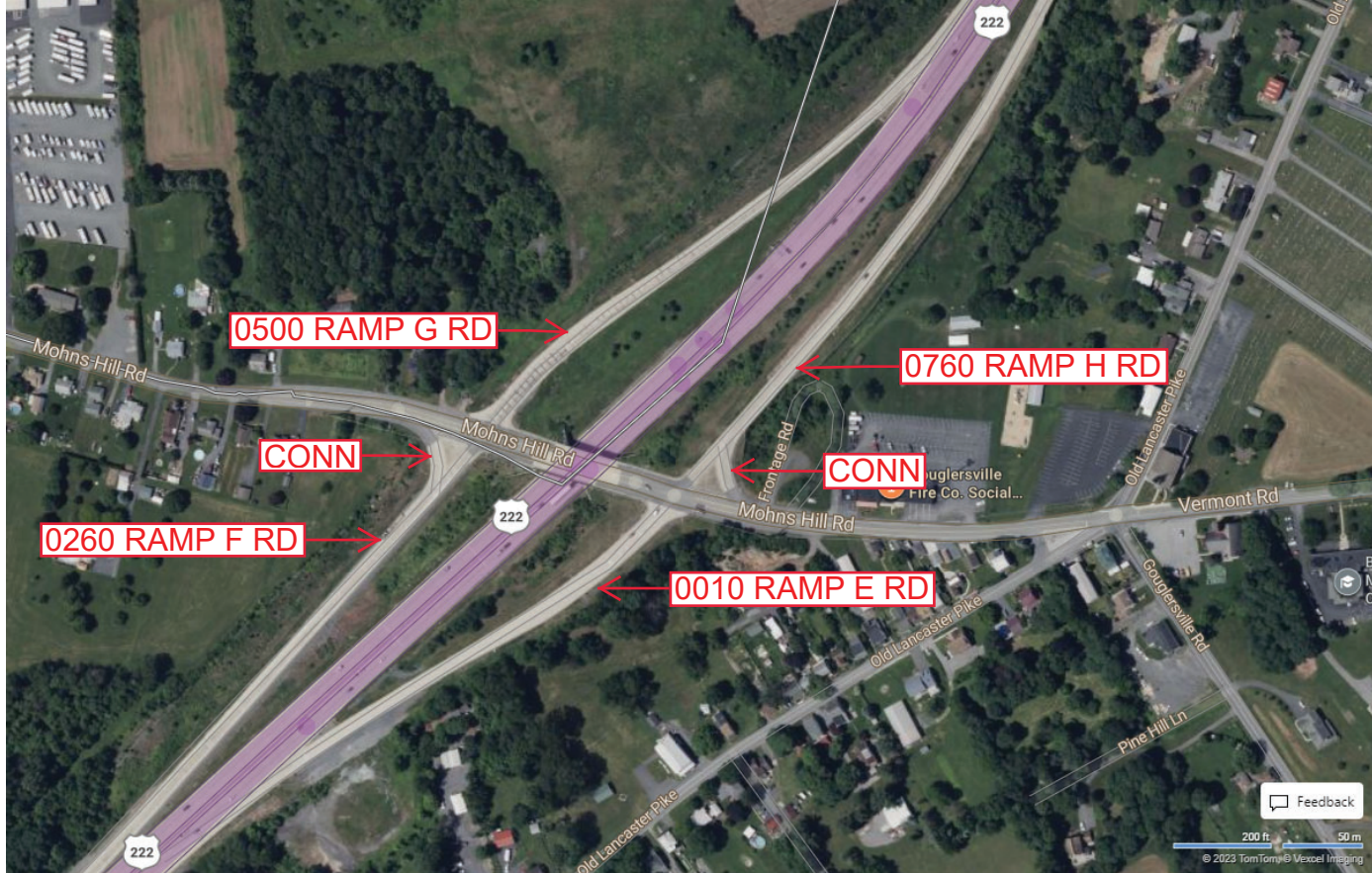
Ramp Segment Number and Ramp Segment Length Information:

Segment	Length	Segment	Length	Segment	Length	Segment	Length
0010	0935						
0260	1181						
0500	1097						
0760	1496						

Primary Route Interchange Exit Number

Secondary Route Interchange Exit Number

PennDOT Type 10 Map View:



© 2023 Microsoft

Last Date Modified:

Aug 30, 2023

County: 06

RMS Interchange Information

Print Form

Interchange Number: 8056

Bureau of Maintenance & Operations
Asset Management Division



Interchange Name: BOYERTOWN INT

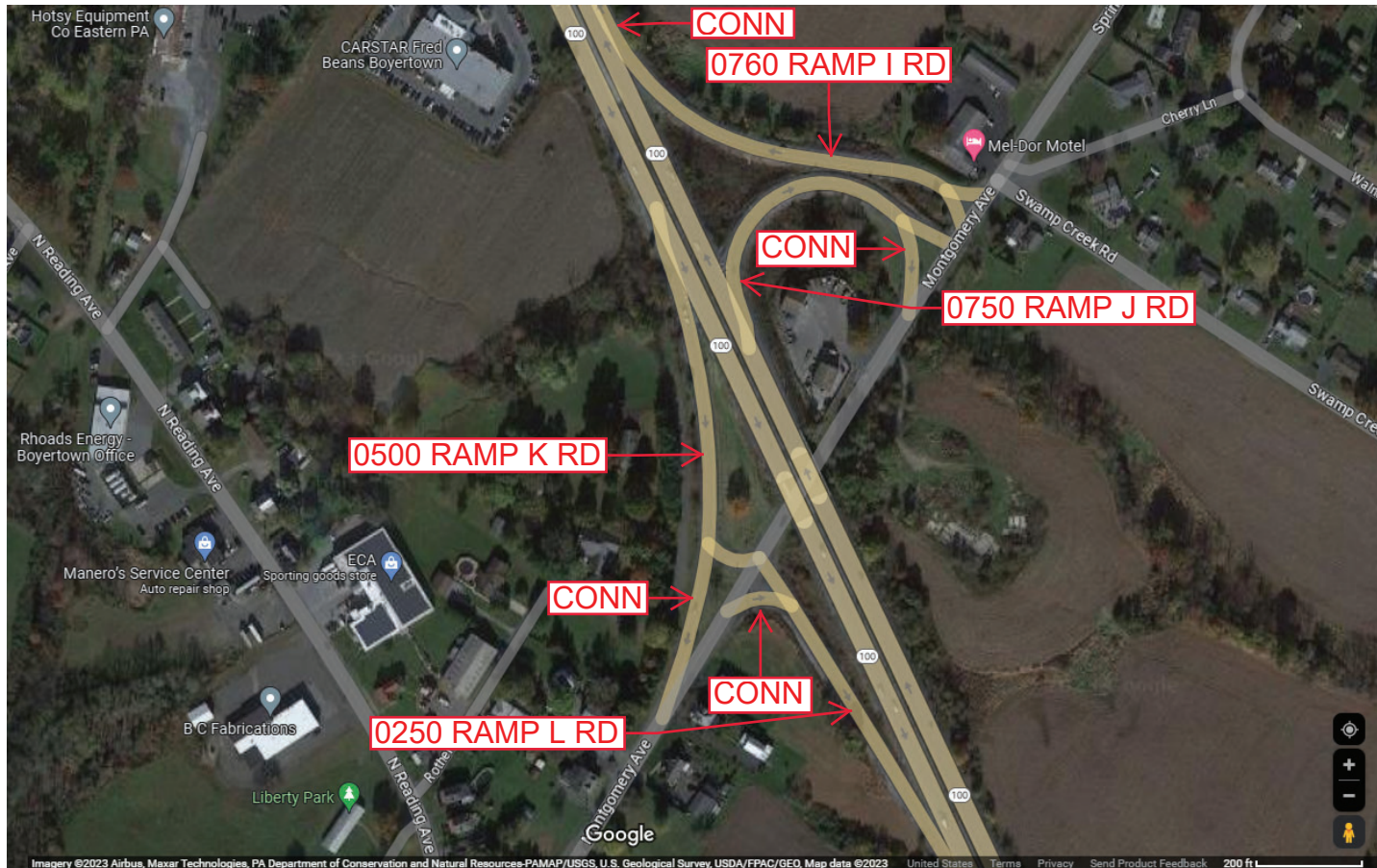
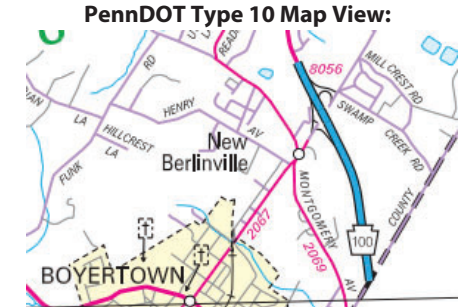
Intersecting SR's: PA 100 & T666 Swamp Creek Rd

Ramp Segment Number and Ramp Segment Length Information:

Segment	Length	Segment	Length	Segment	Length	Segment	Length
0250	0584						
0500	0516						
0750	0541						
0760	0677						

Primary Route Interchange Exit Number

Secondary Route Interchange Exit Number



Last Date Modified: Aug 30, 2023

County: 06

RMS Interchange Information

Print Form

Interchange Number: 8058

Bureau of Maintenance & Operations
Asset Management Division



Interchange Name: ADAMSTOWN & KNAUERS INT

Intersecting SR's: US 222, PA 272 & PA 568

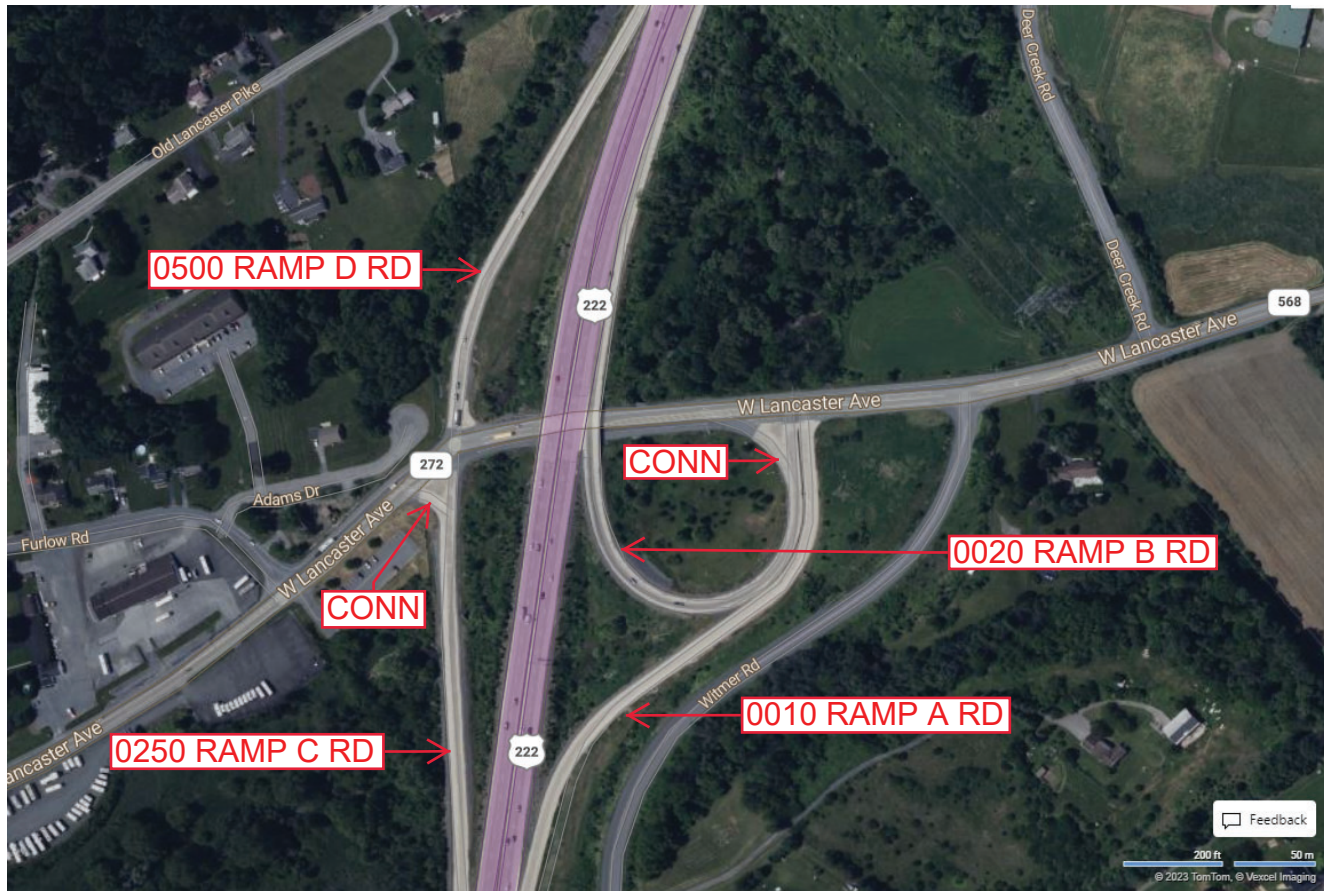
Ramp Segment Number and Ramp Segment Length Information:

Segment	Length	Segment	Length	Segment	Length	Segment	Length
0010	1210						
0020	0934						
0250	0951						
0500	0986						

Primary Route Interchange Exit Number

Secondary Route Interchange Exit Number

PennDOT Type 10 Map View:



Feedback

© 2023 TomTom, © Vexcel Imaging

© 2023 Microsoft

Last Date Modified:

Aug 30, 2023

County: 06

RMS Interchange Information

Print Form

Interchange Number: 8060

Bureau of Maintenance & Operations
Asset Management Division



Interchange Name: MOHNTON INT

Intersecting SR's: US 222, US 3222 & SR 3020

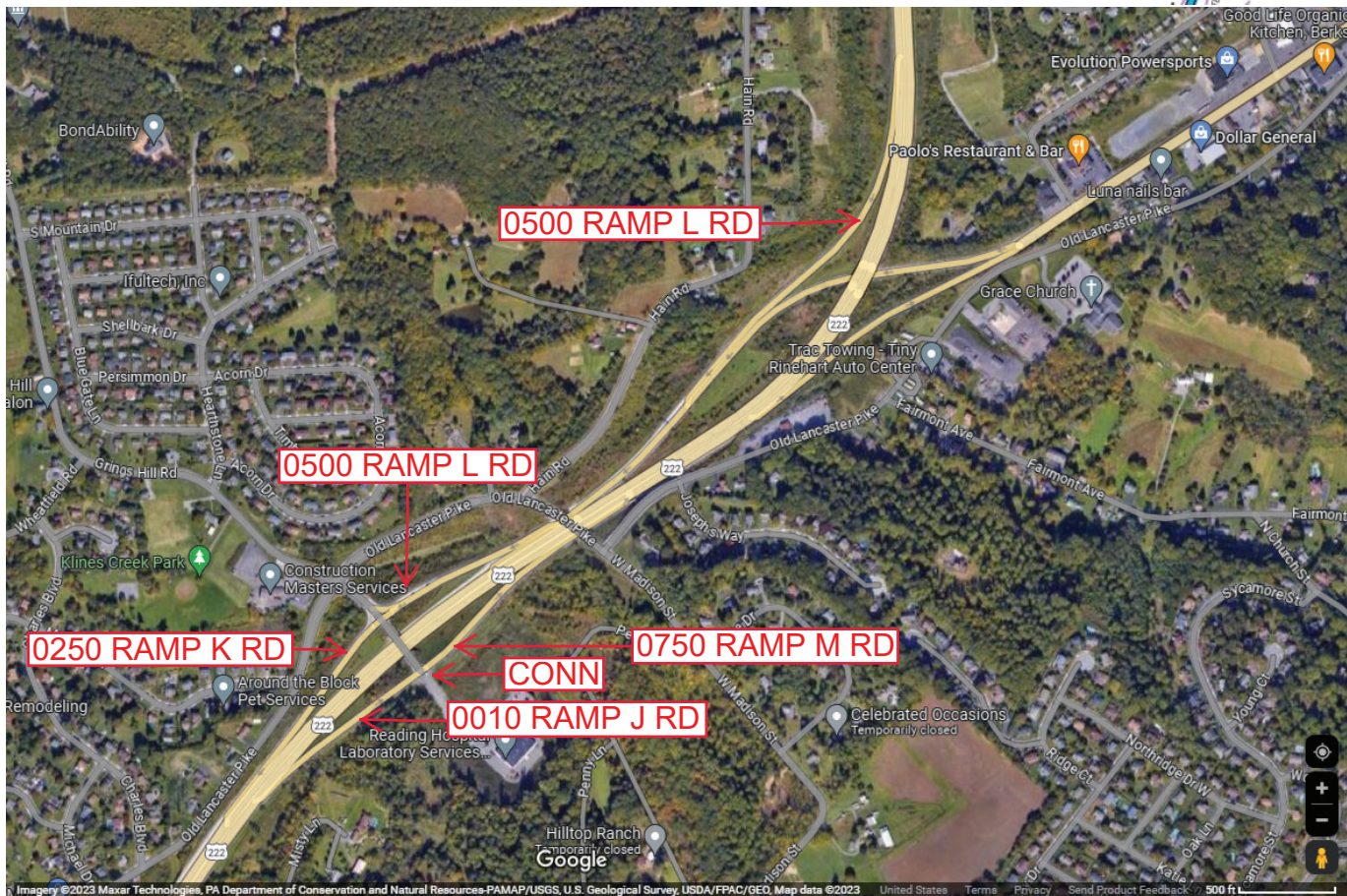
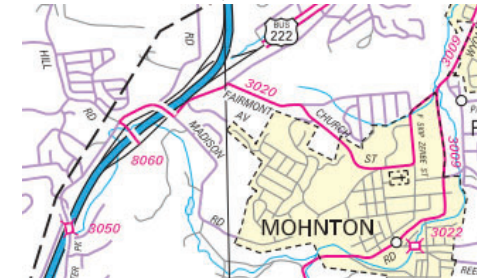
Ramp Segment Number and Ramp Segment Length Information:

Segment	Length	Segment	Length	Segment	Length	Segment	Length
0010	0800						
0250	0656						
0500	3750						
0750	0753						

Primary Route Interchange Exit Number

Secondary Route Interchange Exit Number

PennDOT Type 10 Map View:



Last Date Modified:

Aug 31, 2023

County: 06

RMS Interchange Information

Print Form

Interchange Number: 8062

Bureau of Maintenance & Operations
Asset Management Division



Interchange Name: WYOMISSING INT

Intersecting SR's: US 222, SR 3021, TWP Woodland Rd & BORO Crossing Dr

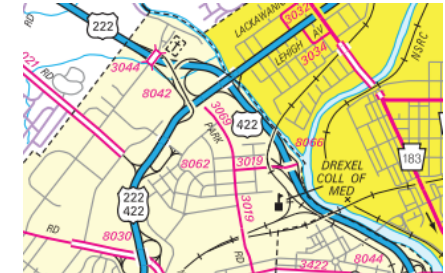
Ramp Segment Number and Ramp Segment Length Information:

Segment	Length	Segment	Length	Segment	Length	Segment	Length
0010	1394						
0020	1141						
0250	0844						
0260	0879						

Primary Route
Interchange Exit
Number

Secondary Route
Interchange Exit
Number

PennDOT Type 10 Map View:



Last Date Modified:

Aug 31, 2023

County: 06

RMS Interchange Information

Print Form

Interchange Number: 8064

Bureau of Maintenance & Operations
Asset Management Division



Interchange Name: SINKING SPRINGS INT

Intersecting SR's: US 222 & PA 724 Reverse BI

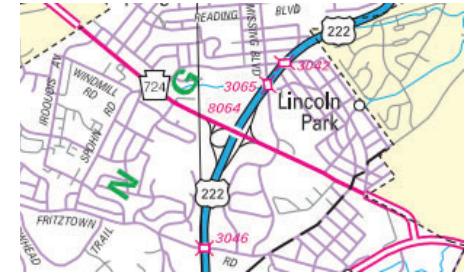
Ramp Segment Number and Ramp Segment Length Information:

Segment	Length	Segment	Length	Segment	Length	Segment	Length
0010	0780						
0250	1350						
0260	1099						
0750	0773						

Primary Route Interchange Exit Number

Secondary Route Interchange Exit Number

PennDOT Type 10 Map View:



Last Date Modified: Sep 1, 2023

County: 06

RMS Interchange Information

Print Form

Interchange Number: 8066

Bureau of Maintenance & Operations
Asset Management Division



Interchange Name: NORTH WYOMISSING BL INT

Intersecting SR's: US 422 & SR 3019 North Wyomissing Bl

Ramp Segment Number and Ramp Segment Length Information:

Segment	Length	Segment	Length	Segment	Length	Segment	Length
0010	0543						
0250	0510						
0500	0288						
0750	0403						

Primary Route Interchange Exit Number

Secondary Route Interchange Exit Number

PennDOT Type 10 Map View:



Last Date Modified:

Sep 1, 2023

County: 06

RMS Interchange Information

Print Form

Interchange Number: 9101

Bureau of Maintenance & Operations
Asset Management Division



Interchange Name: WYE RD

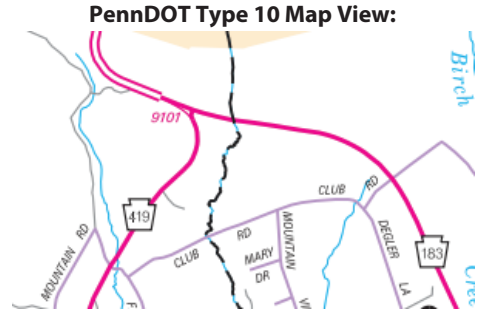
Intersecting SR's: PA 183 SH & PA 419 SH

Ramp Segment Number and Ramp Segment Length Information:

Segment	Length	Segment	Length	Segment	Length	Segment	Length
0010	0397						

Primary Route Interchange Exit Number

Secondary Route Interchange Exit Number



Last Date Modified: Apr 26, 2024

County: 06

RMS Interchange Information

Print Form

Interchange Number: 9300

Bureau of Maintenance & Operations
Asset Management Division



Interchange Name: TRUCK ESCAPE RAMP

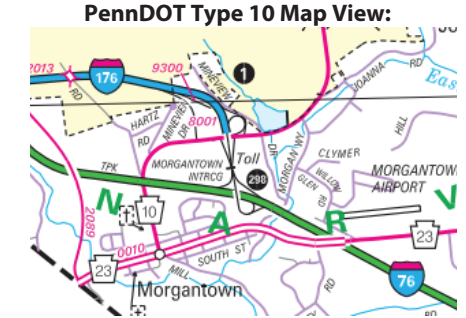
Intersecting SR's: I-176 Morgantown Ex

Ramp Segment Number and Ramp Segment Length Information:

Segment	Length	Segment	Length	Segment	Length	Segment	Length
0010	0915						

Primary Route Interchange Exit Number

Secondary Route Interchange Exit Number



Last Date Modified: Sep 5, 2023

County: 06

RMS Interchange Information

Print Form

Interchange Number: 9401

Bureau of Maintenance & Operations
Asset Management Division



Interchange Name: SR 2041 JUGHANDLE RD

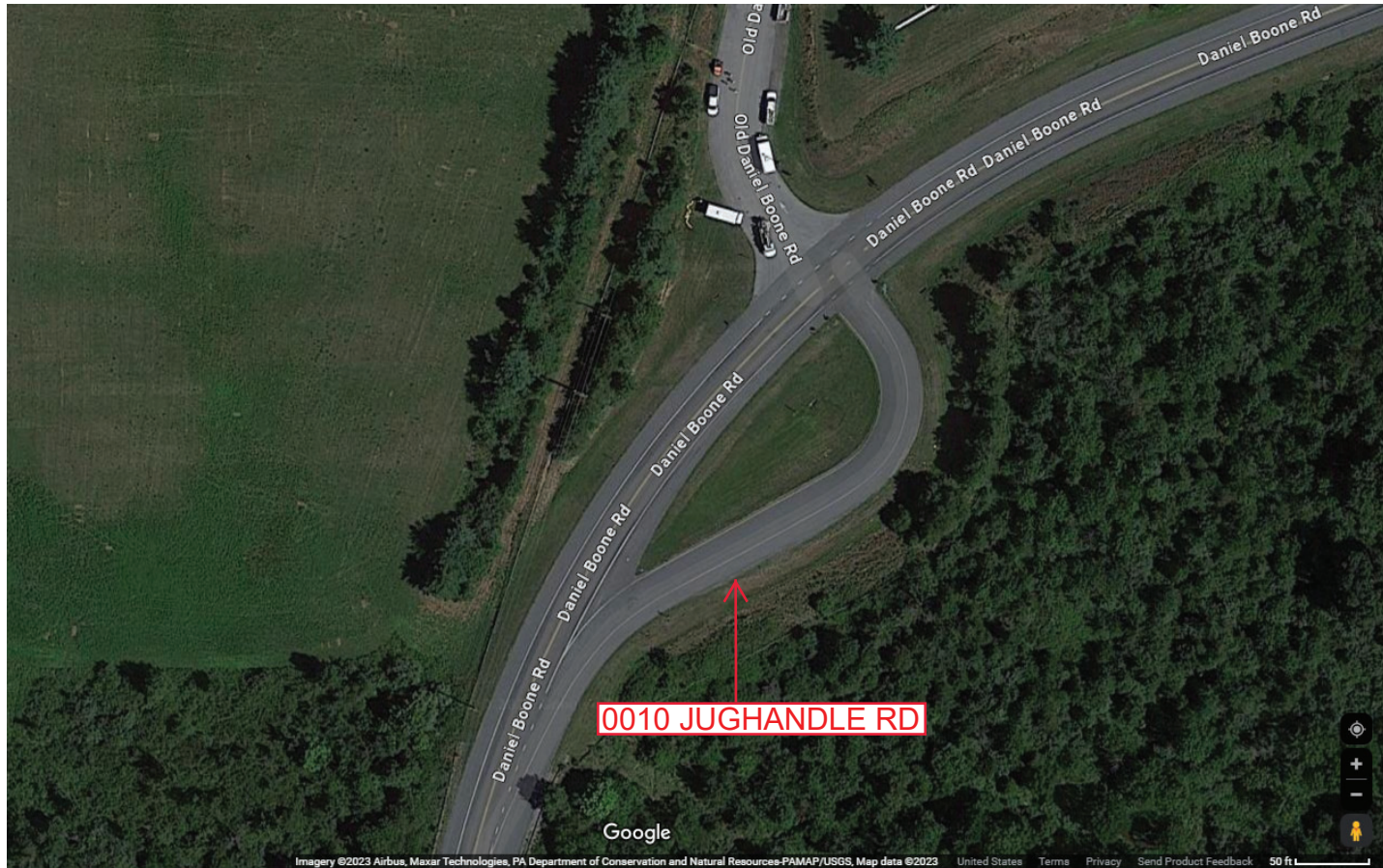
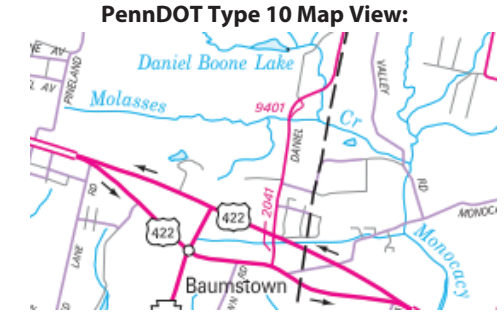
Intersecting SR's: SR 2041 Daniel Boone Rd

Ramp Segment Number and Ramp Segment Length Information:

Segment	Length	Segment	Length	Segment	Length	Segment	Length
0010	0296						

Primary Route Interchange Exit Number

Secondary Route Interchange Exit Number



Last Date Modified: Sep 5, 2023

County: 06

RMS Interchange Information

Print Form

Interchange Number: 9402

Bureau of Maintenance & Operations
Asset Management Division



Interchange Name: GREEN HILLS INT

Intersecting SR's: I-176 & PA 10 Morgantown Rd

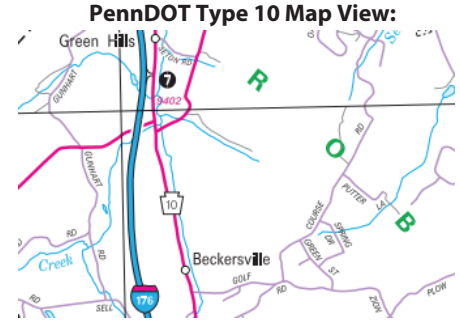
Ramp Segment Number and Ramp Segment Length Information:

Segment	Length	Segment	Length	Segment	Length	Segment	Length
0010	0472						
0750	0402						

Primary Route
Interchange Exit
Number

7

Secondary Route
Interchange Exit
Number



Last Date Modified:

Sep 5, 2023

County: 06

RMS Interchange Information

Print Form

Interchange Number: 9403

Bureau of Maintenance & Operations
Asset Management Division



Interchange Name: POTTSVILLE PIKE INT

Intersecting SR's: PA 61 Pottsville Pk

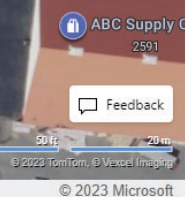
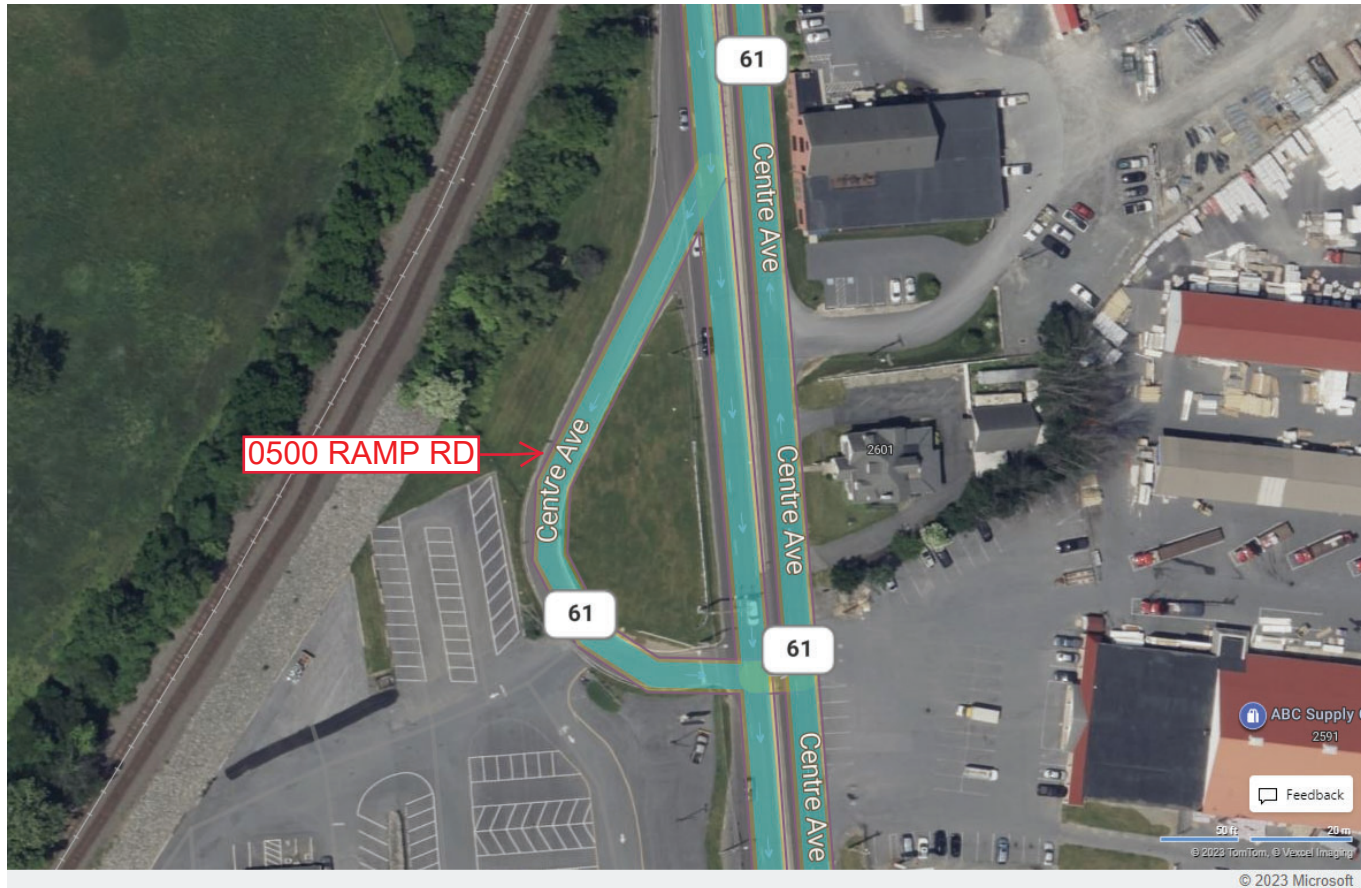
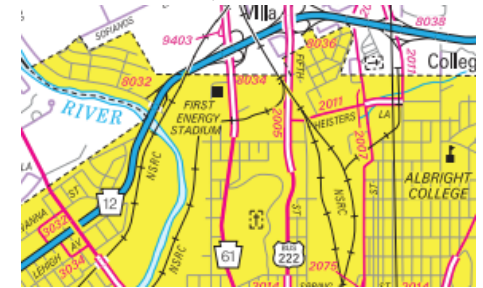
Ramp Segment Number and Ramp Segment Length Information:

Segment	Length	Segment	Length	Segment	Length	Segment	Length
0500	0347						

Primary Route Interchange Exit Number

Secondary Route Interchange Exit Number

PennDOT Type 10 Map View:



Last Date Modified:

Sep 5, 2023

County: 06

RMS Interchange Information

Bureau of Maintenance & Operations
Asset Management Division

Print Form



Interchange Number: 9404

Interchange Name: GREEN HILLS INT

Intersecting SR's: I-176 & PA 10 Morgantown Rd

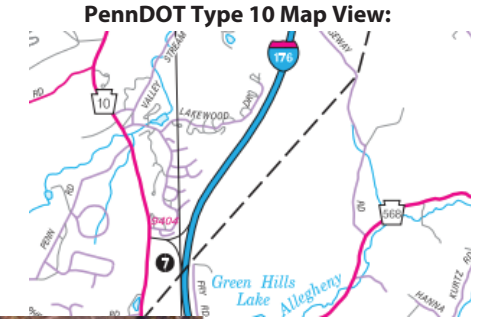
Ramp Segment Number and Ramp Segment Length Information:

Segment	Length	Segment	Length	Segment	Length	Segment	Length
0250	1563						
0500	1398						

Primary Route Interchange Exit Number

7

Secondary Route Interchange Exit Number



Last Date Modified:

Sep 5, 2023

County: 06

RMS Interchange Information

Print Form

Interchange Number: 9405

Bureau of Maintenance & Operations
Asset Management Division



Interchange Name: HARTMAN RD INT

Intersecting SR's: PA 61 Pottstown Pk & Hartman Rd

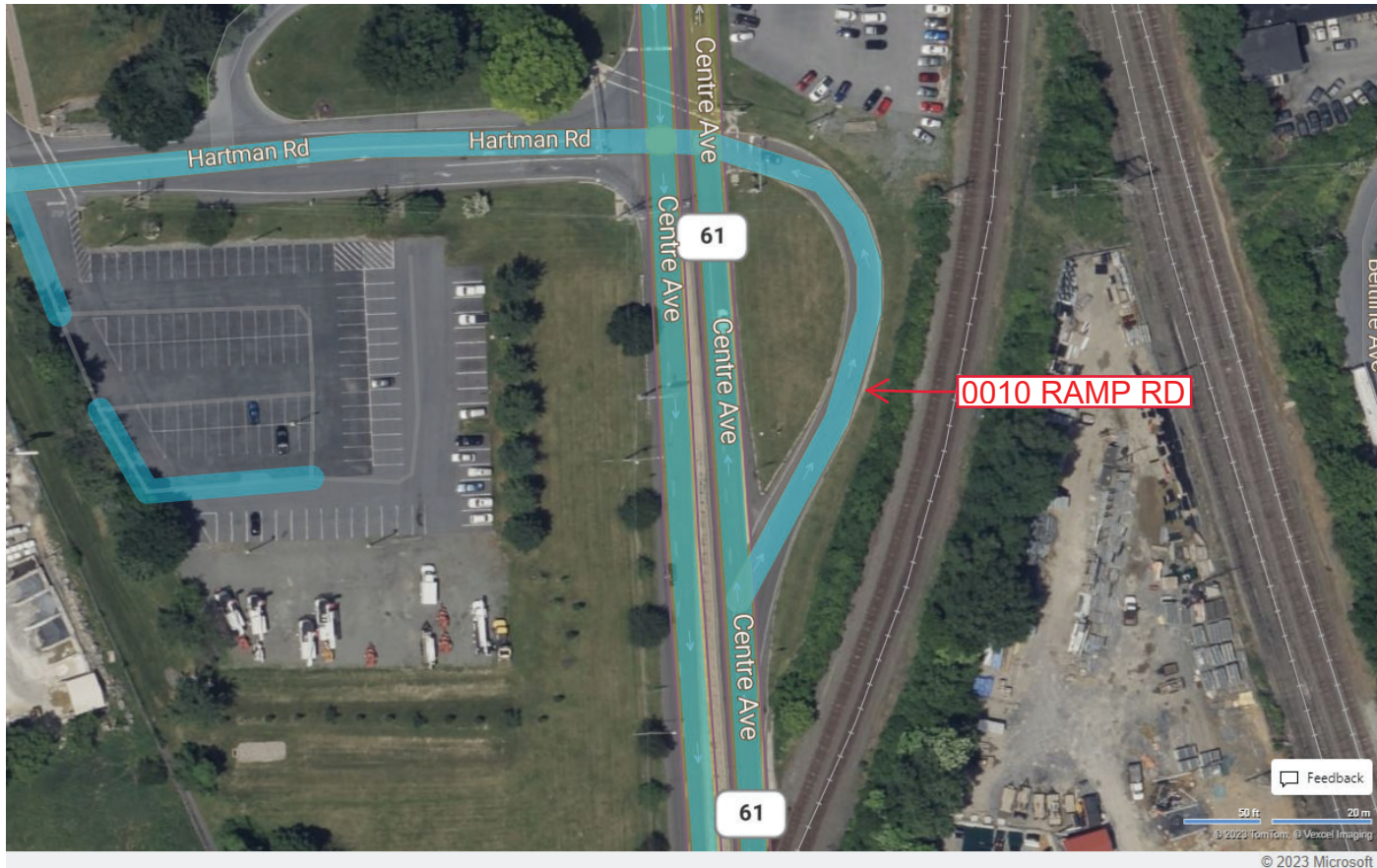
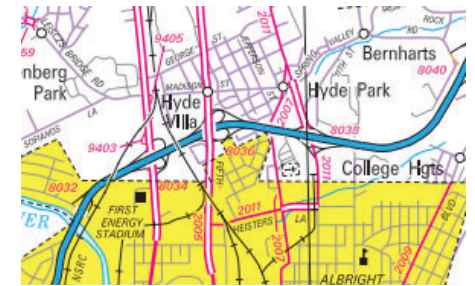
Ramp Segment Number and Ramp Segment Length Information:

Segment	Length	Segment	Length	Segment	Length	Segment	Length
0010	0325						

Primary Route Interchange Exit Number

Secondary Route Interchange Exit Number

PennDOT Type 10 Map View:



Last Date Modified: Sep 5, 2023

County: 06

RMS Interchange Information

Print Form

Interchange Number: 9406

Bureau of Maintenance & Operations
Asset Management Division



Interchange Name: SHELBOURNE RD JUGHANDLE

Intersecting SR's: US 422, SR 2033 Shelbourne Rd & T739 Shelbourne Rd

Ramp Segment Number and Ramp Segment Length Information:

Segment	Length	Segment	Length	Segment	Length	Segment	Length
0010	1075						
0500	0692						

Primary Route
Interchange Exit
Number

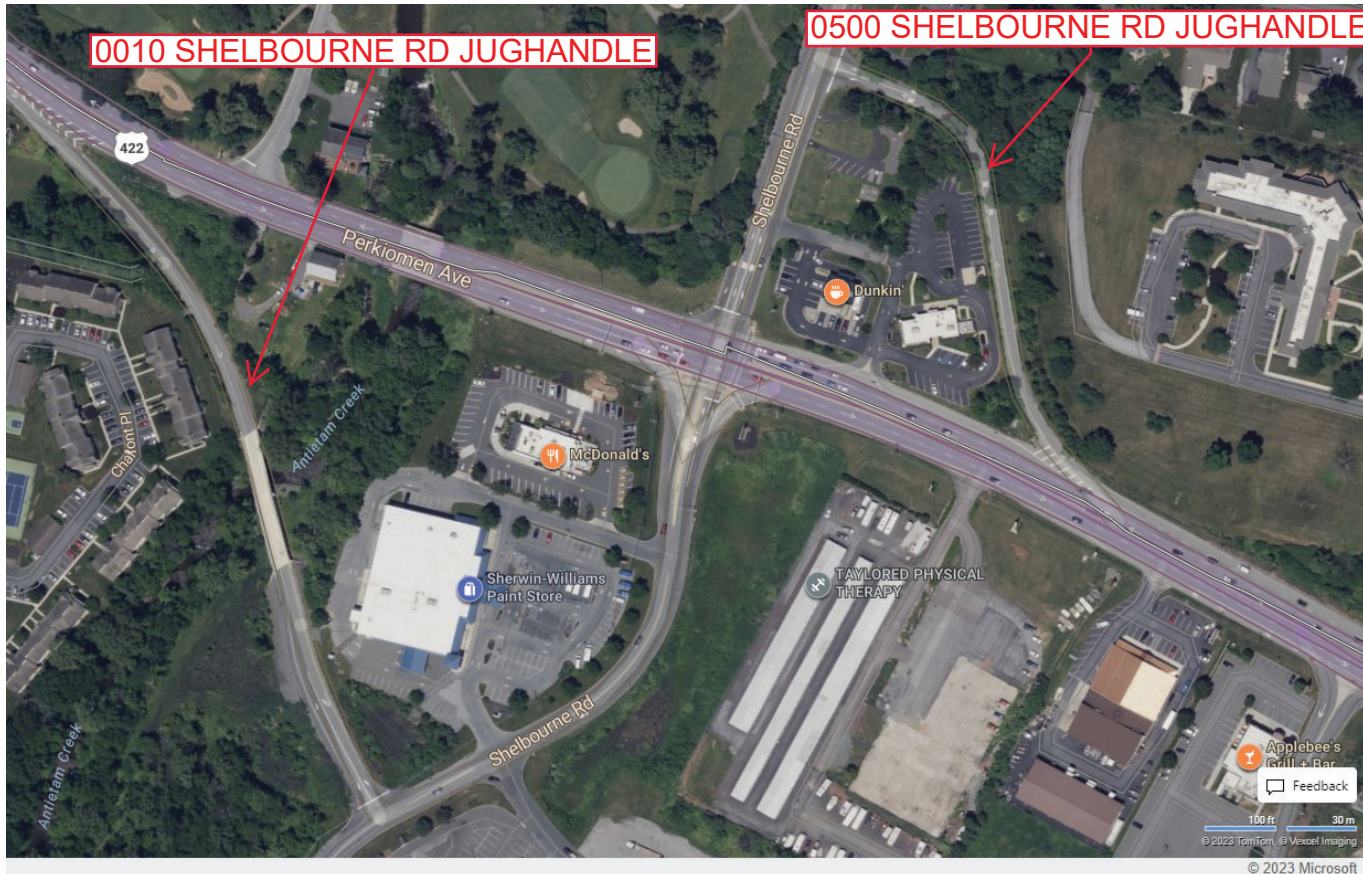
Secondary Route
Interchange Exit
Number

PennDOT Type 10 Map View:



0010 SHELBOURNE RD JUGHANDLE

0500 SHELBOURNE RD JUGHANDLE



Last Date Modified:

Sep 5, 2023

County: 06

RMS Interchange Information

Print Form

Interchange Number: 9408

Bureau of Maintenance & Operations
Asset Management Division



Interchange Name: MONOCACY CREEK RD JUGHANDLE

Intersecting SR's: US 422, SR 2025 Monocacy Creek Rd & SR 2025 Limekiln

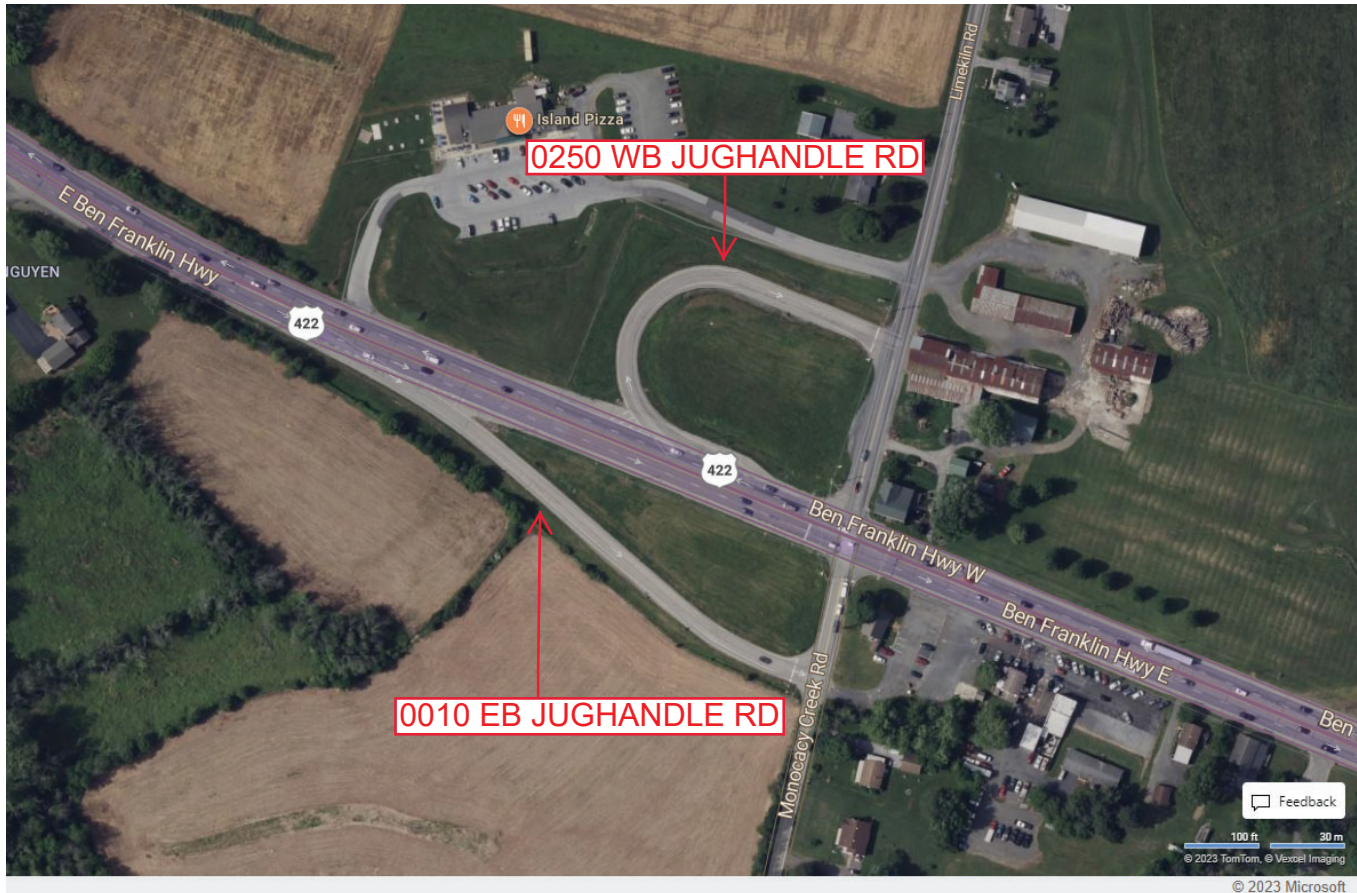
Ramp Segment Number and Ramp Segment Length Information:

Segment	Length	Segment	Length	Segment	Length	Segment	Length
0010	0575						
0250	0486						

Primary Route
Interchange Exit
Number

Secondary Route
Interchange Exit
Number

PennDOT Type 10 Map View:



Feedback
100 ft 30 m
© 2023 TomTom. © Vexcel Imaging
© 2023 Microsoft

Last Date Modified:

Sep 5, 2023