

County: 13

RMS Interchange Information

Print Form

Interchange Number: 8002

Bureau of Maintenance & Operations
Asset Management Division



Interchange Name: EAST SIDE INT

Intersecting SR's: I-80 & PA 534 Tannery Rd

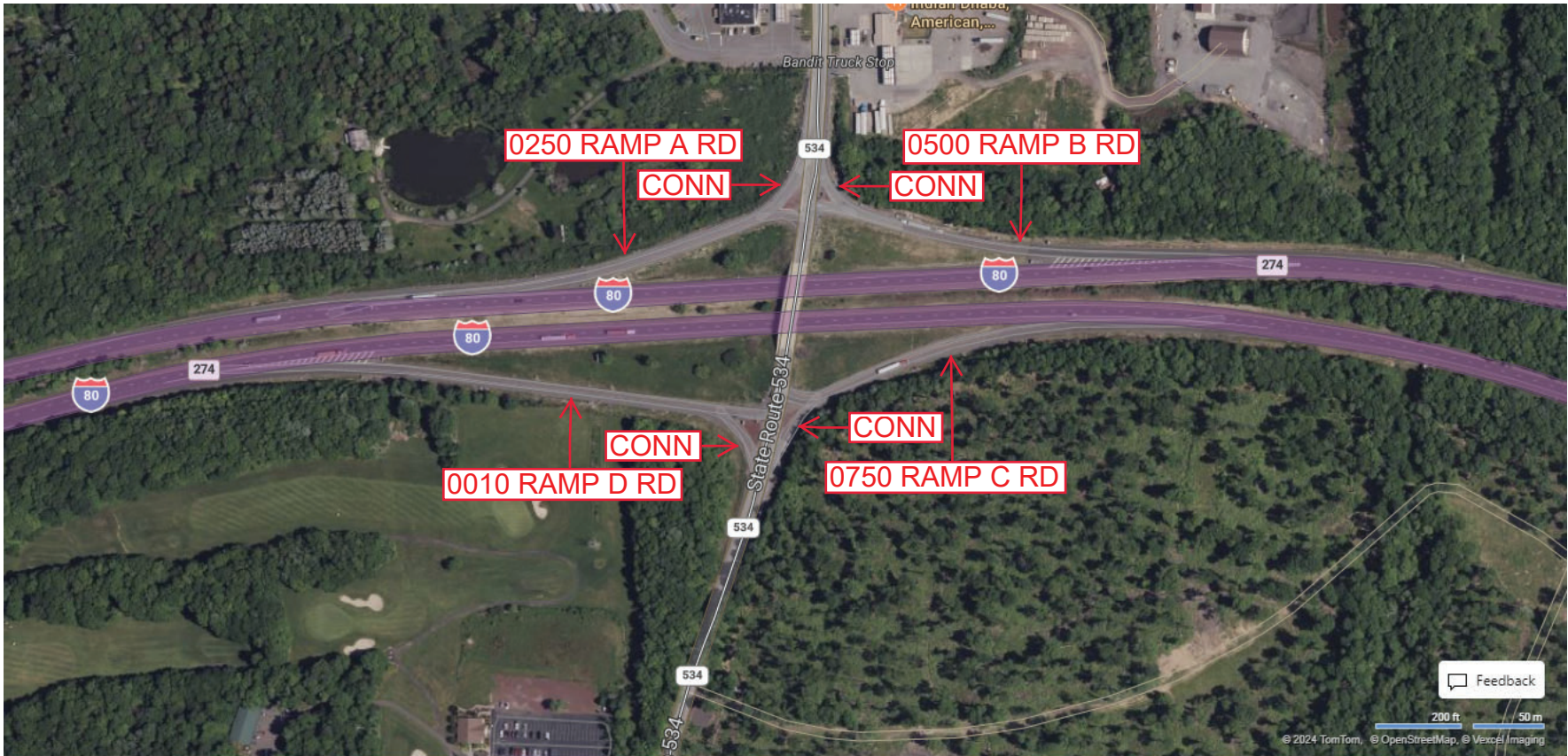
Ramp Segment Number and Ramp Segment Length Information:

Segment	Length	Segment	Length	Segment	Length	Segment	Length
0010	0953						
0250	0574						
0500	0567						
0750	0587						

Primary Route Interchange Exit Number: 274

Secondary Route Interchange Exit Number

PennDOT Type 10 Map View:



Last Date Modified: Nov 15, 2024

County: 13

RMS Interchange Information

Print Form

Interchange Number: 8004

Bureau of Maintenance & Operations
Asset Management Division



Interchange Name: POCONO INTERCHANGE

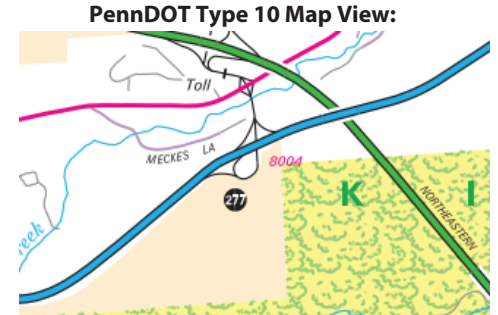
Intersecting SR's: I-80 & PA 940

Ramp Segment Number and Ramp Segment Length Information:

Segment	Length	Segment	Length	Segment	Length	Segment	Length
0010	1710	0510	1587				
0020	1415						
0250	1573						
0260	0739						
0500	0796						

Primary Route Interchange Exit Number: 277

Secondary Route Interchange Exit Number



Feedback

300 ft 100 m
© 2023 TomTom, © Vexcel Imaging

© 2023 Microsoft

Last Date Modified:

Sep 6, 2023

County: 13

RMS Interchange Information

Print Form

Interchange Number: 8006

Bureau of Maintenance & Operations
Asset Management Division



Interchange Name: BOWMANSTOWN INT

Intersecting SR's: PA 248 & SR 2019 Bank St

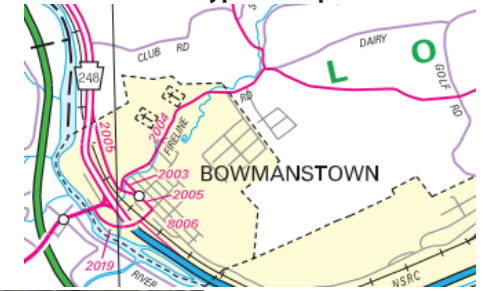
Ramp Segment Number and Ramp Segment Length Information:

Segment	Length	Segment	Length	Segment	Length	Segment	Length
0500	1062						

Primary Route Interchange Exit Number

Secondary Route Interchange Exit Number

PennDOT Type 10 Map View:



Feedback
100 ft 50 m
© 2023 TomTom, © Vexcel Imaging
© 2023 Microsoft

Last Date Modified: Sep 8, 2023

County: 13

RMS Interchange Information

Print Form

Interchange Number: 8008

Bureau of Maintenance & Operations
Asset Management Division



Interchange Name: PALMERTON INT

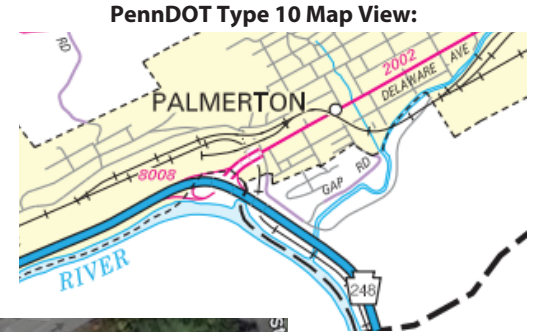
Intersecting SR's: PA 248 & SR 2002 Delaware Av

Ramp Segment Number and Ramp Segment Length Information:

Segment	Length	Segment	Length	Segment	Length	Segment	Length
0010	1280						
0020	0910						
0250	0475						
0500	0408						

Primary Route Interchange Exit Number

Secondary Route Interchange Exit Number



Last Date Modified: Sep 8, 2023

County: 13

RMS Interchange Information

Print Form

Interchange Number: 9301

Bureau of Maintenance & Operations
Asset Management Division



Interchange Name: PA 93 TRUCK ESCAPE RAMP

Intersecting SR's: PA 93

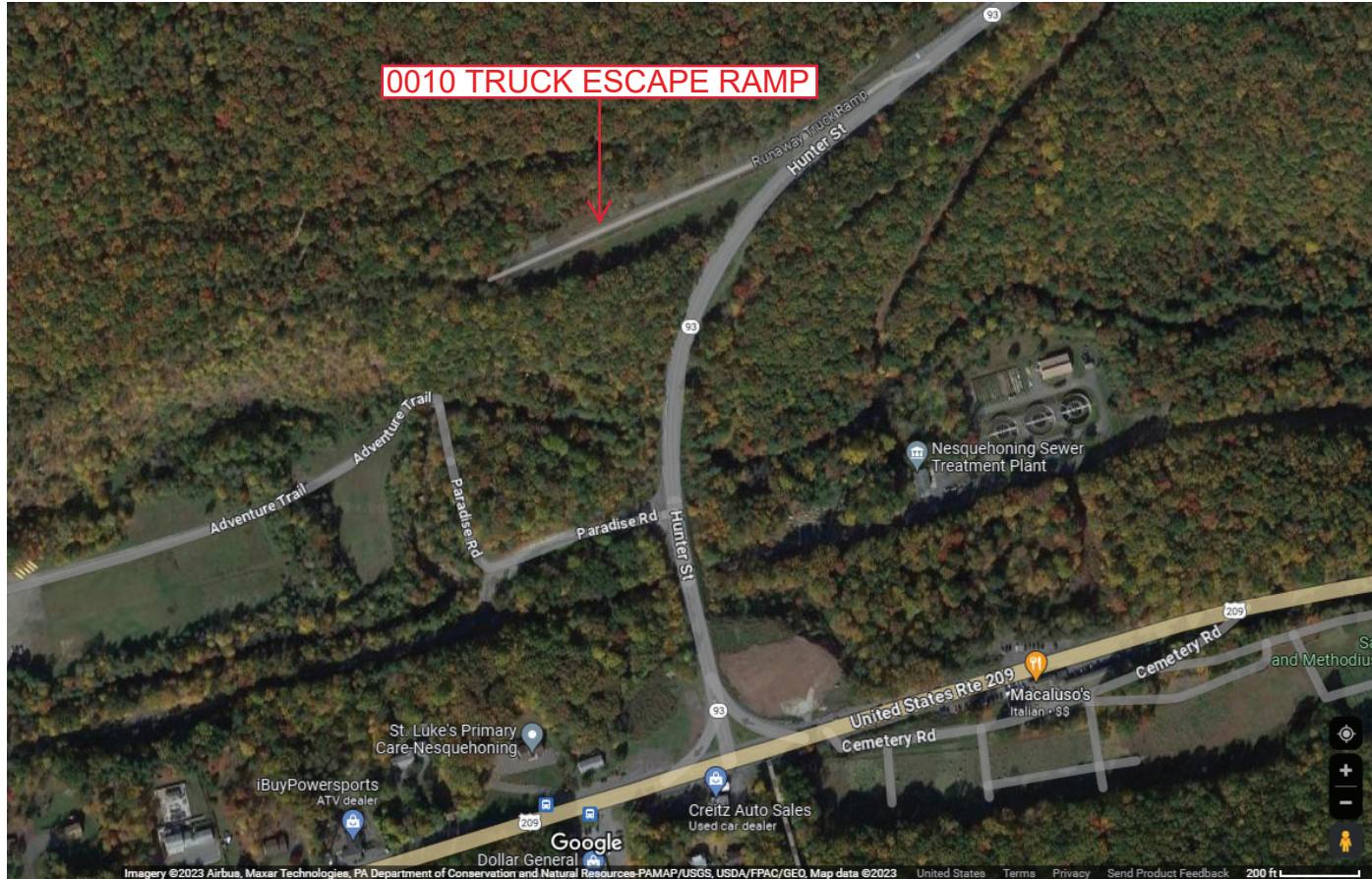
Ramp Segment Number and Ramp Segment Length Information:

Segment	Length	Segment	Length	Segment	Length	Segment	Length
0010	0818						

Primary Route Interchange Exit Number

Secondary Route Interchange Exit Number

PennDOT Type 10 Map View:



Last Date Modified: Sep 8, 2023