

County: 39

RMS Interchange Information

Print Form

Interchange Number: 8001

Bureau of Maintenance & Operations
Asset Management Division



Interchange Name: SUMMIT LAWN INT

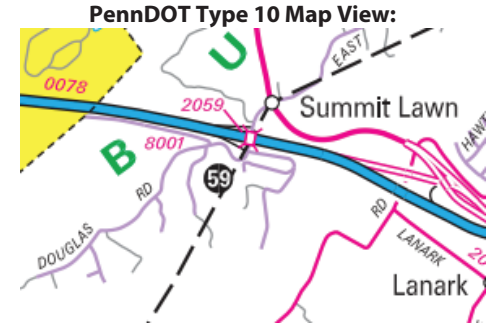
Intersecting SR's: I-78 & T500 West Rock Rd

Ramp Segment Number and Ramp Segment Length Information:

Segment	Length	Segment	Length	Segment	Length	Segment	Length
0020	0793						
0260	0866						

Primary Route Interchange Exit Number: 59

Secondary Route Interchange Exit Number



Last Date Modified:

Sep 11, 2023

County: 39

RMS Interchange Information

Print Form

Interchange Number: 8002

Bureau of Maintenance & Operations
Asset Management Division



Interchange Name: NEW SMITHVILLE INT

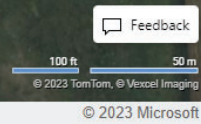
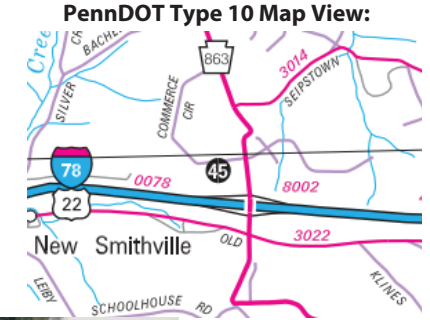
Intersecting SR's: I-78 & PA Golden Key Rd

Ramp Segment Number and Ramp Segment Length Information:

Segment	Length	Segment	Length	Segment	Length	Segment	Length
0010	0766						
0250	0743						
0500	0599						
0750	0507						

Primary Route Interchange Exit Number: 45

Secondary Route Interchange Exit Number



Last Date Modified: Sep 11, 2023

County: 39

RMS Interchange Information

Print Form

Interchange Number: 8003

Bureau of Maintenance & Operations
Asset Management Division



Interchange Name: EMMAUS AV INT

Intersecting SR's: I-78 & SR 2002 Emmaus Av

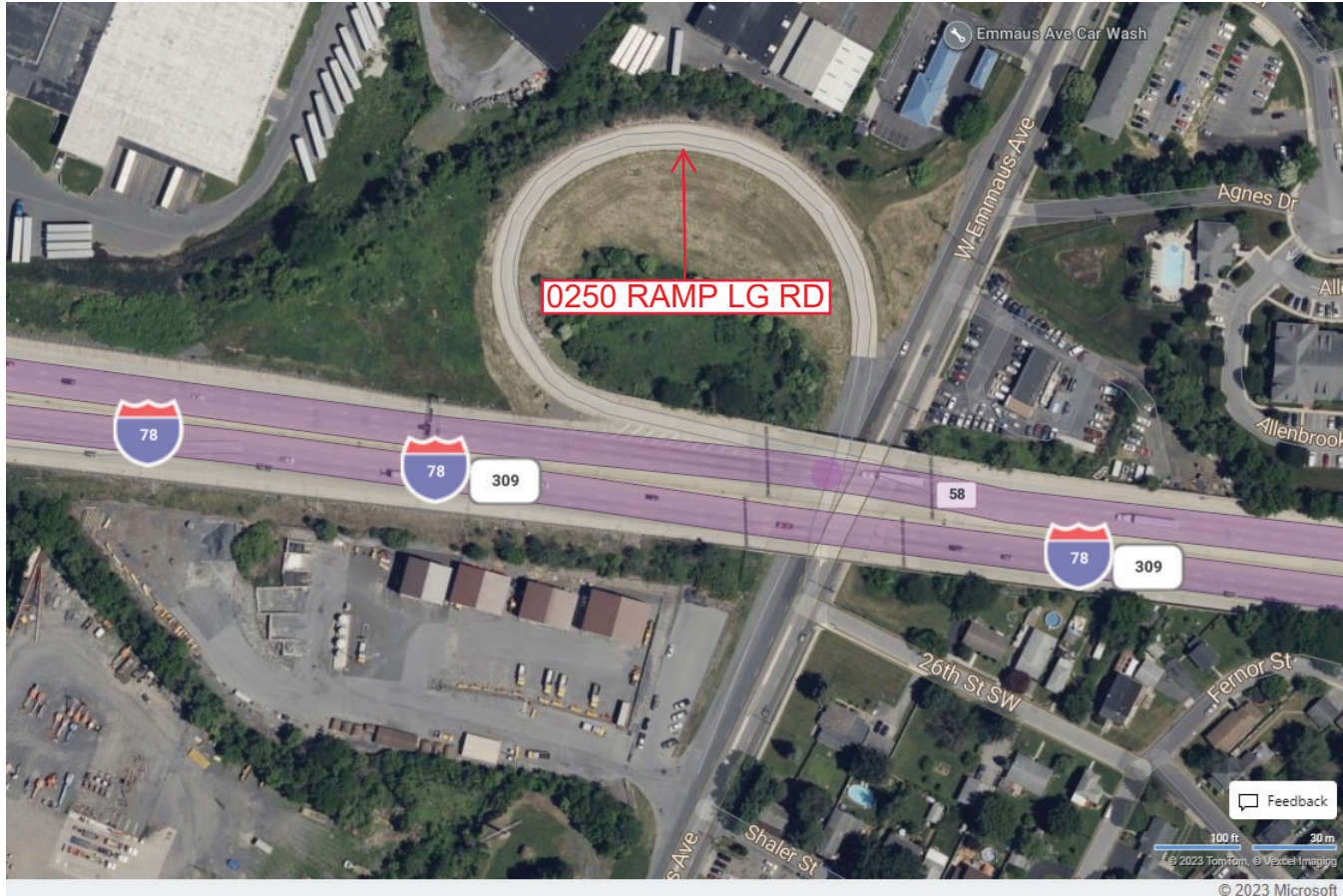
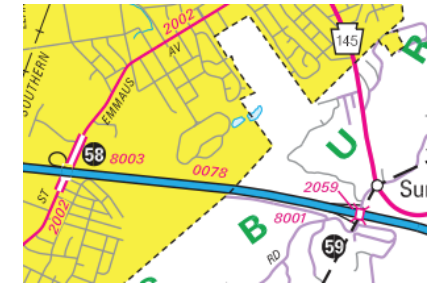
Ramp Segment Number and Ramp Segment Length Information:

Segment	Length	Segment	Length	Segment	Length	Segment	Length
0250	0863						

Primary Route Interchange Exit Number: 58

Secondary Route Interchange Exit Number

PennDOT Type 10 Map View:



Feedback
100 ft 30 m
© 2023 TomTom, © Vexcel Imaging
© 2023 Microsoft

Last Date Modified:

Sep 11, 2023

County: 39

RMS Interchange Information

Print Form

Interchange Number: 8004

Bureau of Maintenance & Operations
Asset Management Division



Interchange Name: FOGELSVILLE INT

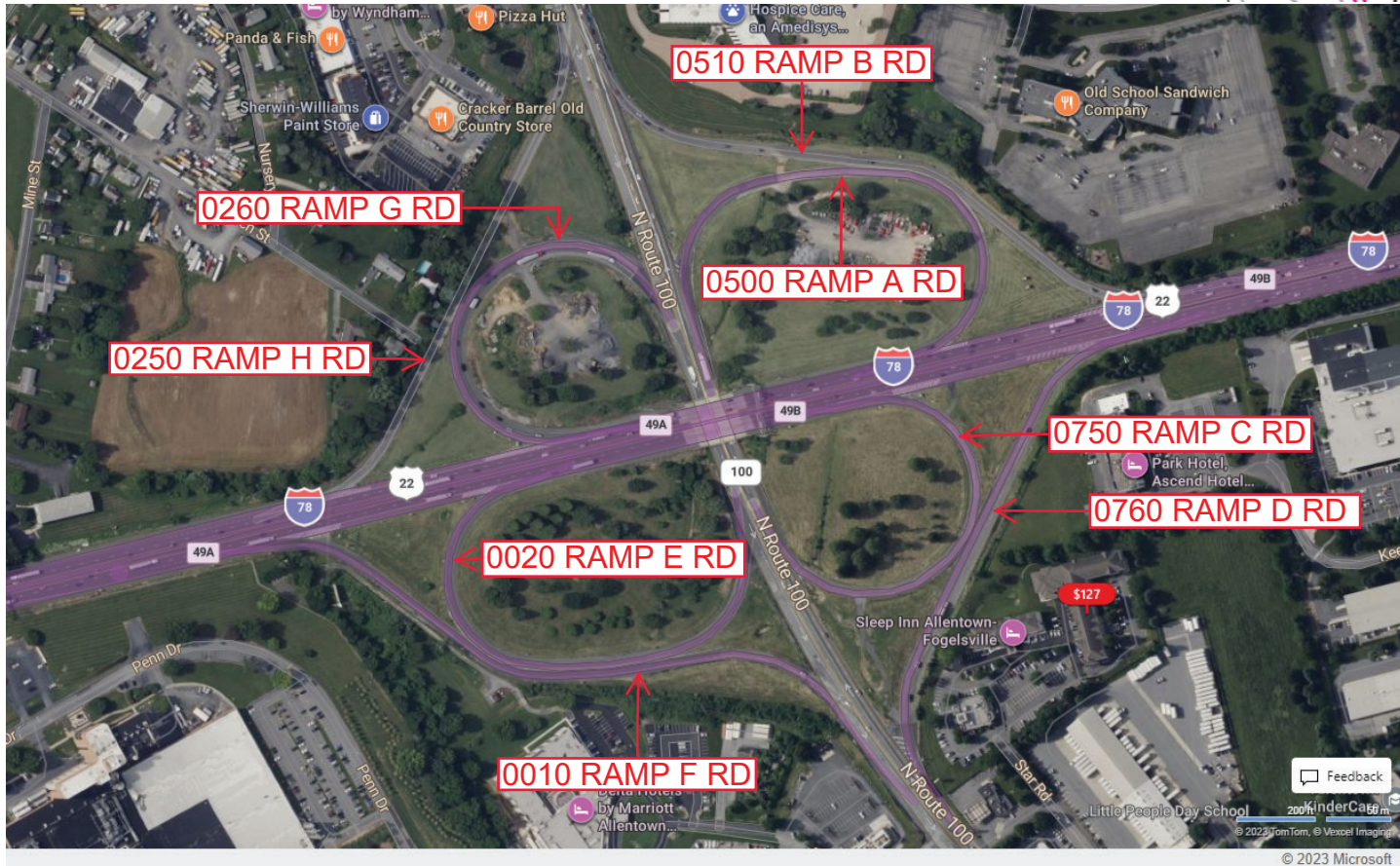
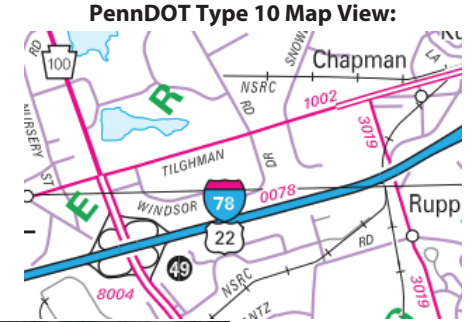
Intersecting SR's: I-78 & PA 100

Ramp Segment Number and Ramp Segment Length Information:

Segment	Length	Segment	Length	Segment	Length	Segment	Length
0010	1400	0510	1364				
0020	1317	0750	0966				
0250	1190	0760	1104				
0260	1008						
0500	1287						

Primary Route Interchange Exit Number: 49

Secondary Route Interchange Exit Number



Last Date Modified:

Sep 11, 2023

County: 39

RMS Interchange Information

Print Form

Interchange Number: 8005

Bureau of Maintenance & Operations
Asset Management Division



Interchange Name: LEHIGH ST INT

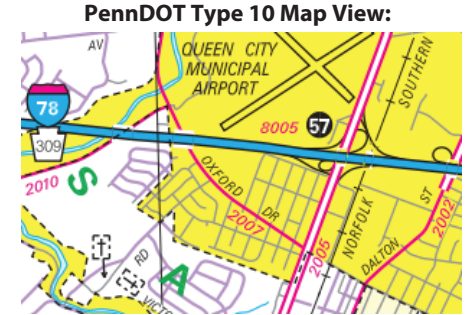
Intersecting SR's: I-78 & SR 2005 Lehigh St

Ramp Segment Number and Ramp Segment Length Information:

Segment	Length	Segment	Length	Segment	Length	Segment	Length
0010	1304	0520	0213				
0020	0770	0750	1077				
0250	0725						
0500	1194						
0510	1248						

Primary Route Interchange Exit Number: 57

Secondary Route Interchange Exit Number



Last Date Modified: Oct 29, 2024

County: **39**

RMS Interchange Information

Print Form

Interchange Number: **8006**

Bureau of Maintenance & Operations
Asset Management Division



Interchange Name: **CETRONIA INT**

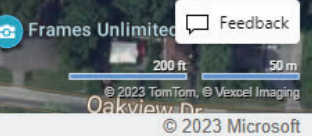
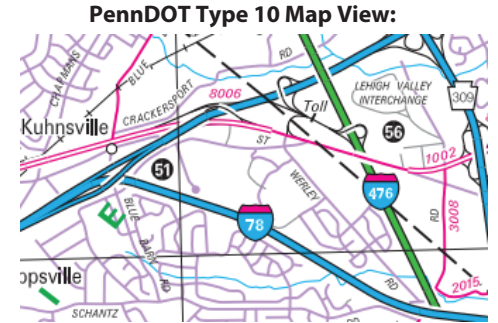
Intersecting SR's: **US 22 & SR 1002 Tilghman St**

Ramp Segment Number and Ramp Segment Length Information:

Segment	Length	Segment	Length	Segment	Length	Segment	Length
0010	0504						
0500	0207						
0510	0677						
0750	0200						

Primary Route Interchange Exit Number

Secondary Route Interchange Exit Number



Last Date Modified: **Oct 29, 2024**

County: 39

RMS Interchange Information

Print Form

Interchange Number: 8007

Bureau of Maintenance & Operations
Asset Management Division



Interchange Name: CEDAR CREST BLVD INT

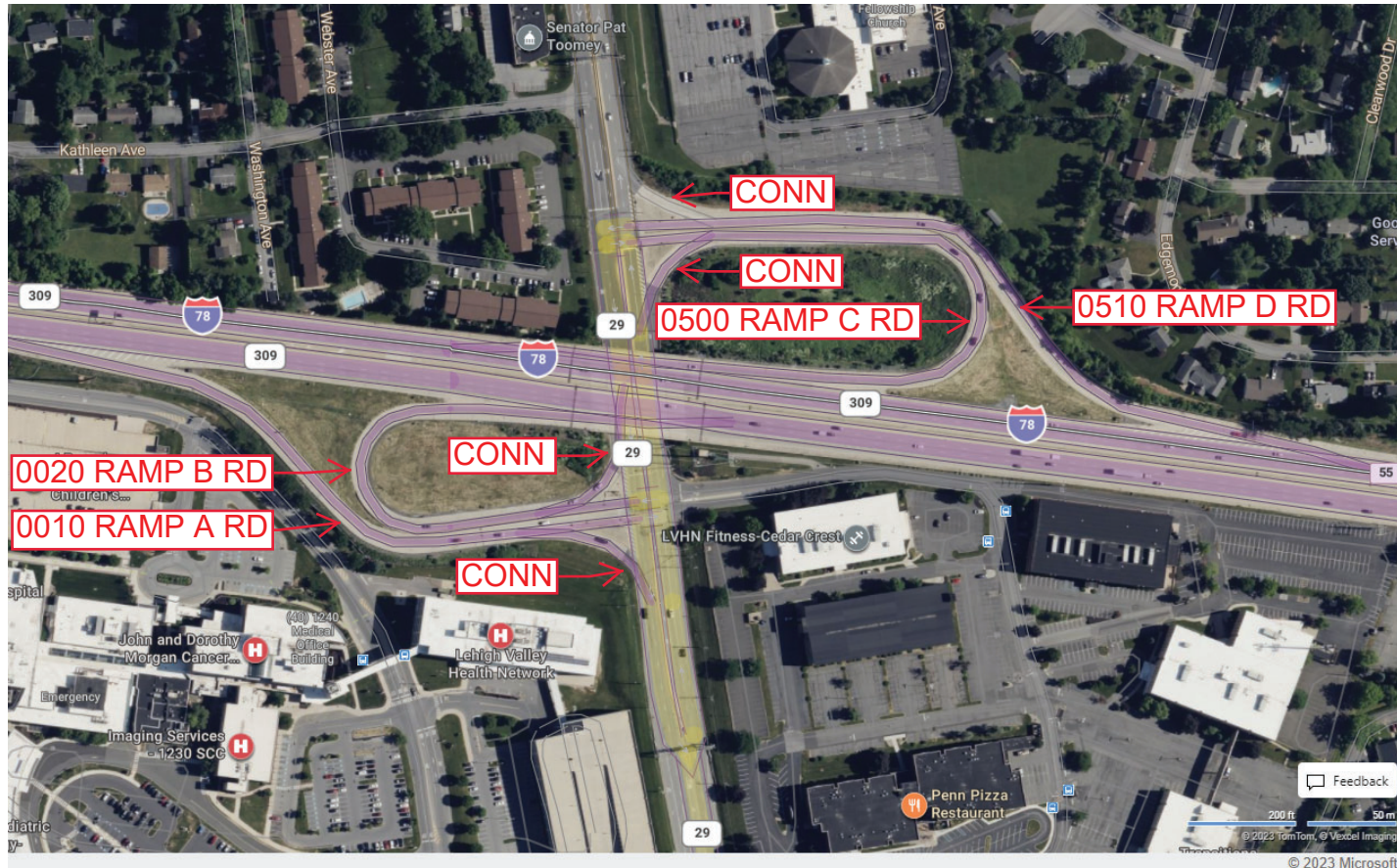
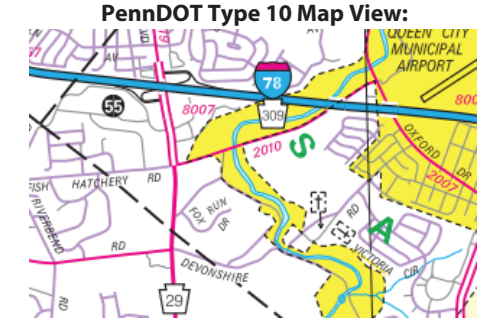
Intersecting SR's: I-78, PA 29 & SR 1019 Cedar Crest Bl

Ramp Segment Number and Ramp Segment Length Information:

Segment	Length	Segment	Length	Segment	Length	Segment	Length
0010	0956						
0020	0780						
0500	0977						
0510	1111						

Primary Route Interchange Exit Number: 55

Secondary Route Interchange Exit Number



Last Date Modified:

Sep 13, 2023

County: 39

RMS Interchange Information

Print Form

Interchange Number: 8008

Bureau of Maintenance & Operations
Asset Management Division



Interchange Name: QUAKERTOWN & TAMAQUA INT

Intersecting SR's: US 22 & PA 309

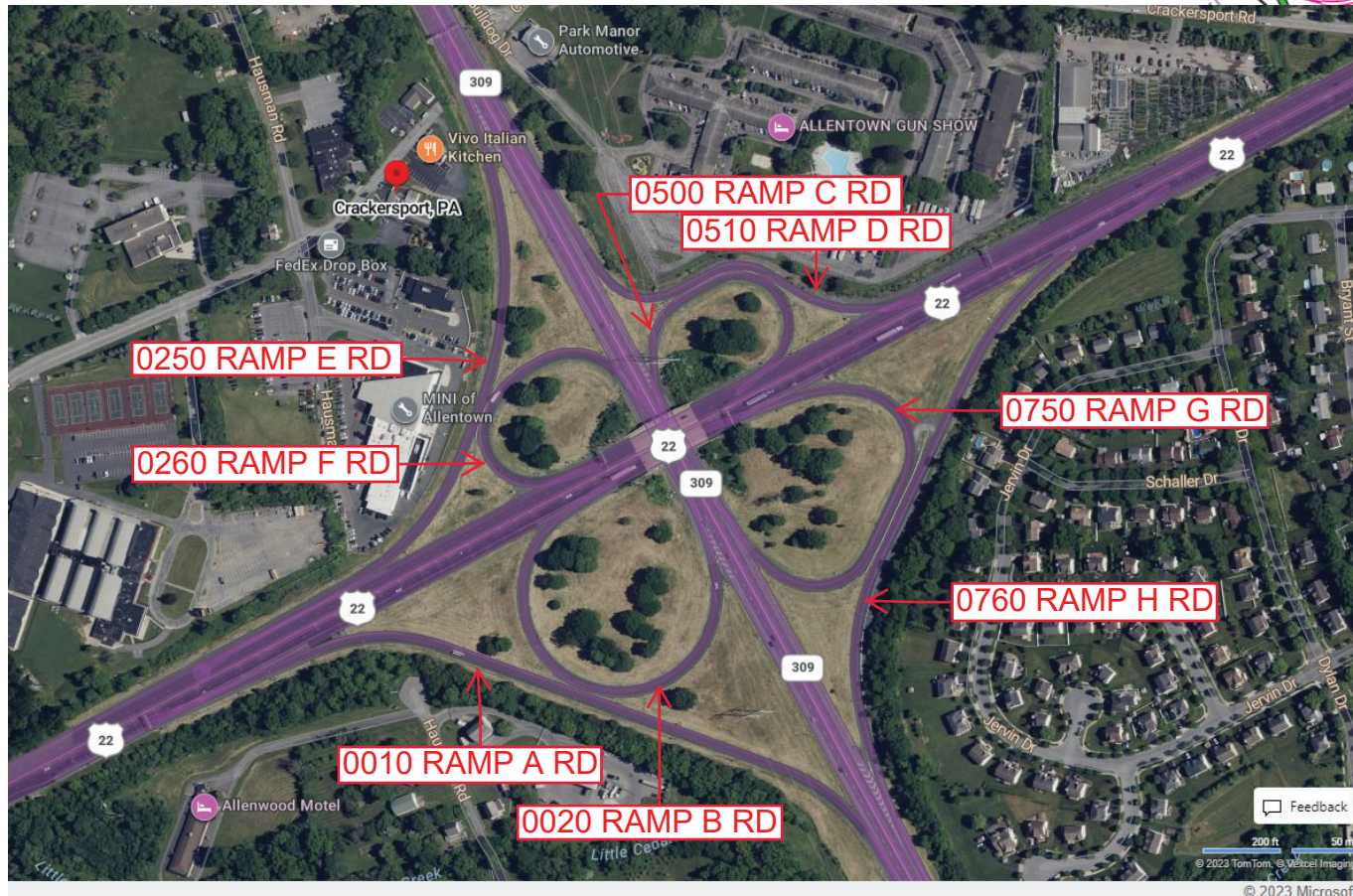
Ramp Segment Number and Ramp Segment Length Information:

Segment	Length	Segment	Length	Segment	Length	Segment	Length
0010	1527	0510	0750				
0020	1044	0750	0985				
0250	1151	0760	1458				
0260	0627						
0500	0690						

Primary Route
Interchange Exit
Number

Secondary Route
Interchange Exit
Number

PennDOT Type 10 Map View:



Last Date Modified:

Sep 13, 2023

County: 39

RMS Interchange Information

Bureau of Maintenance & Operations
Asset Management Division

Print Form



Interchange Number: 8009

Interchange Name: HAMILTON BL INT

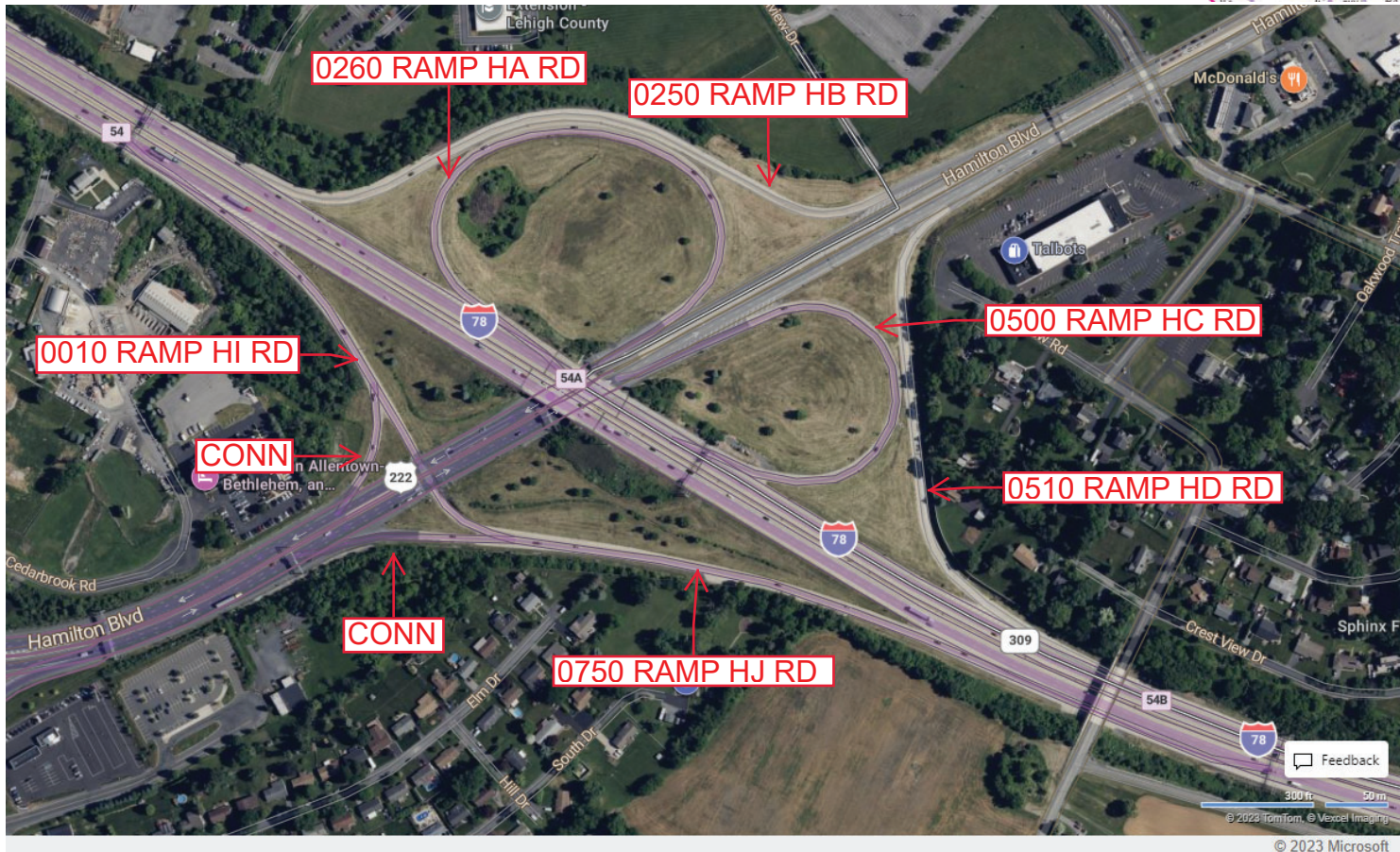
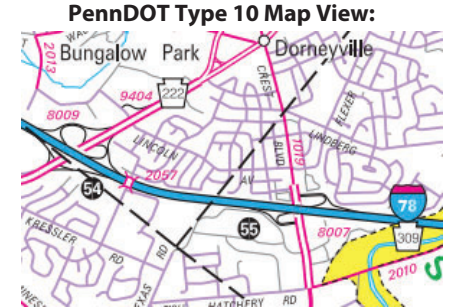
Intersecting SR's: I-78 & US 22 & Hamilton BI

Ramp Segment Number and Ramp Segment Length Information:

Segment	Length	Segment	Length	Segment	Length	Segment	Length
0010	0753	0750	1387				
0250	1614						
0260	1444						
0500	0936						
0510	1023						

Primary Route Interchange Exit Number: 54, 54A

Secondary Route Interchange Exit Number: 54B



Last Date Modified:

Oct 31, 2024

County: 39

RMS Interchange Information

Print Form

Interchange Number: 8010

Bureau of Maintenance & Operations
Asset Management Division



Interchange Name: CEDAR CREST BL INT

Intersecting SR's: US 22 & SR 1019 Cedar Crest Bl

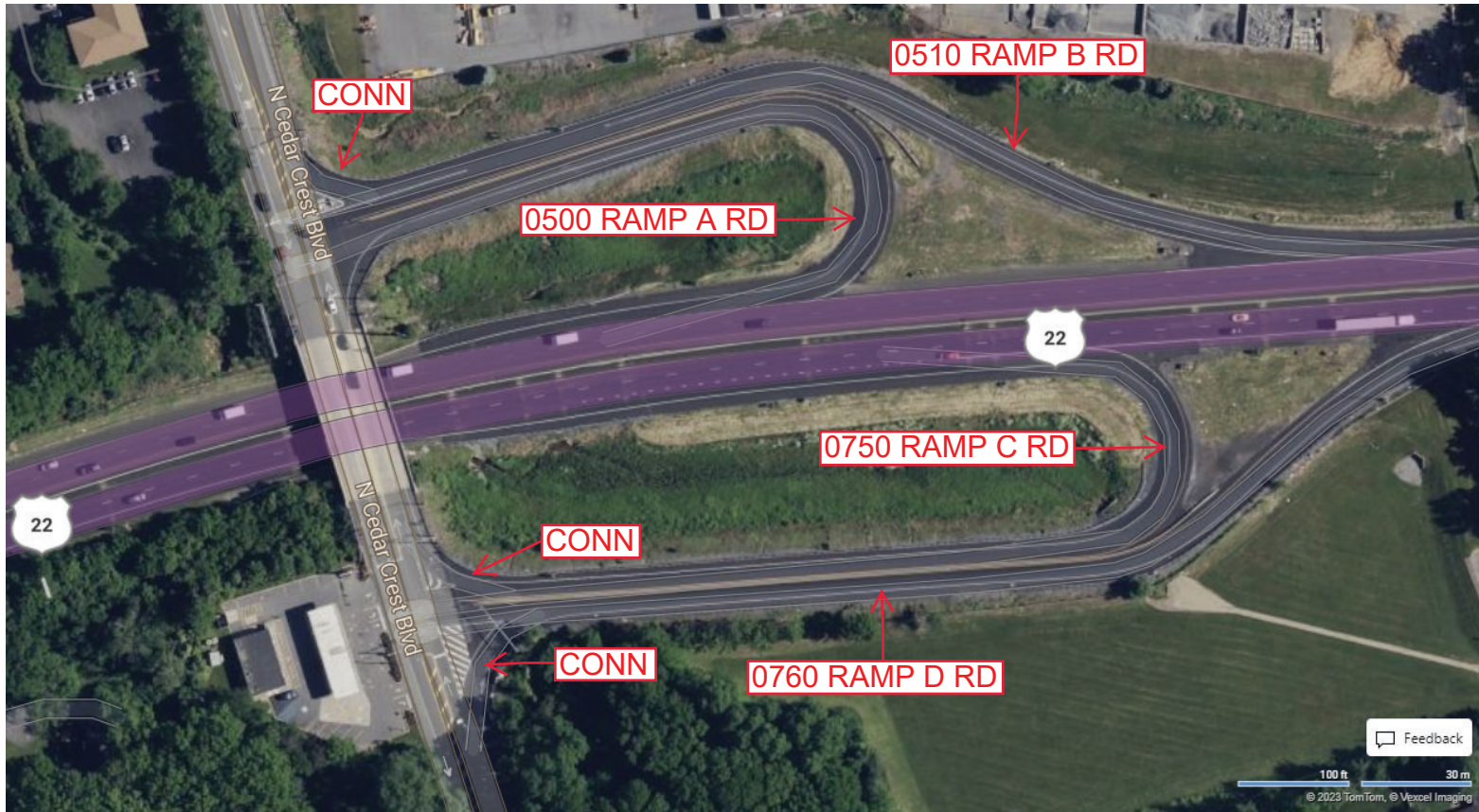
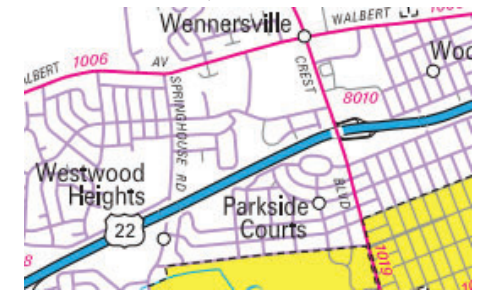
Ramp Segment Number and Ramp Segment Length Information:

Segment	Length	Segment	Length	Segment	Length	Segment	Length
0500	0641						
0510	0844						
0750	0783						
0760	0920						

Primary Route
Interchange Exit
Number

Secondary Route
Interchange Exit
Number

PennDOT Type 10 Map View:



Last Date Modified:

Sep 14, 2023

Feedback
100 ft 30 m
© 2023 TomTom, © Vexcel Imaging
© 2023 Microsoft

County: 39

RMS Interchange Information

Print Form

Interchange Number: 8012

Bureau of Maintenance & Operations
Asset Management Division



Interchange Name: 15TH STREET INT

Intersecting SR's: US 22 & T603 Mauch Chuck Rd

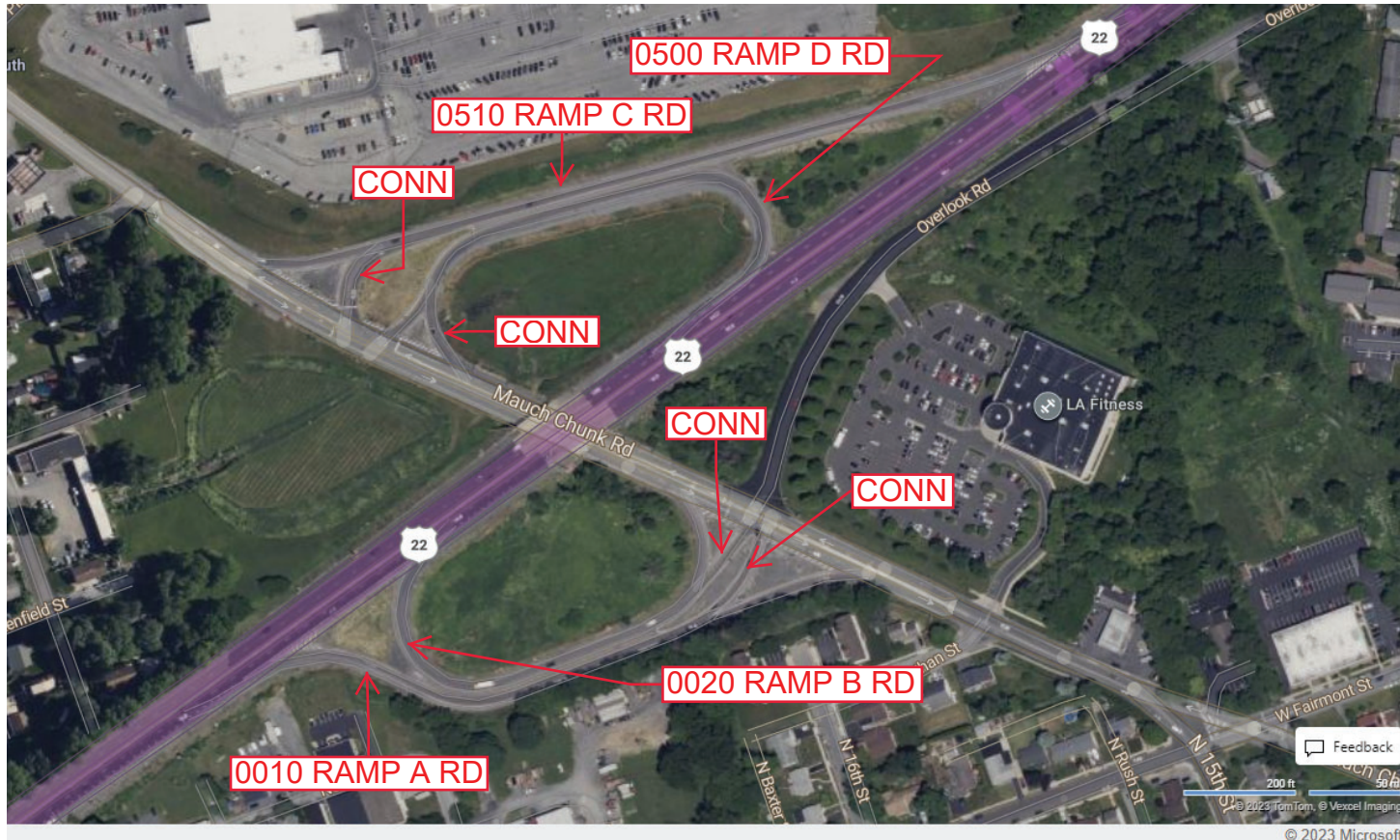
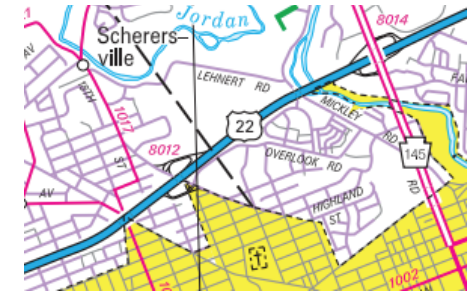
Ramp Segment Number and Ramp Segment Length Information:

Segment	Length	Segment	Length	Segment	Length	Segment	Length
0010	0995						
0020	0831						
0500	0865						
0510	1309						

Primary Route
Interchange Exit
Number

Secondary Route
Interchange Exit
Number

PennDOT Type 10 Map View:



County: 39

RMS Interchange Information

Print Form

Bureau of Maintenance & Operations
Asset Management Division



Interchange Number: 8013

Interchange Name: TILGHMAN ST INT

Intersecting SR's: PA 309 & SR 1002 Tilghman St

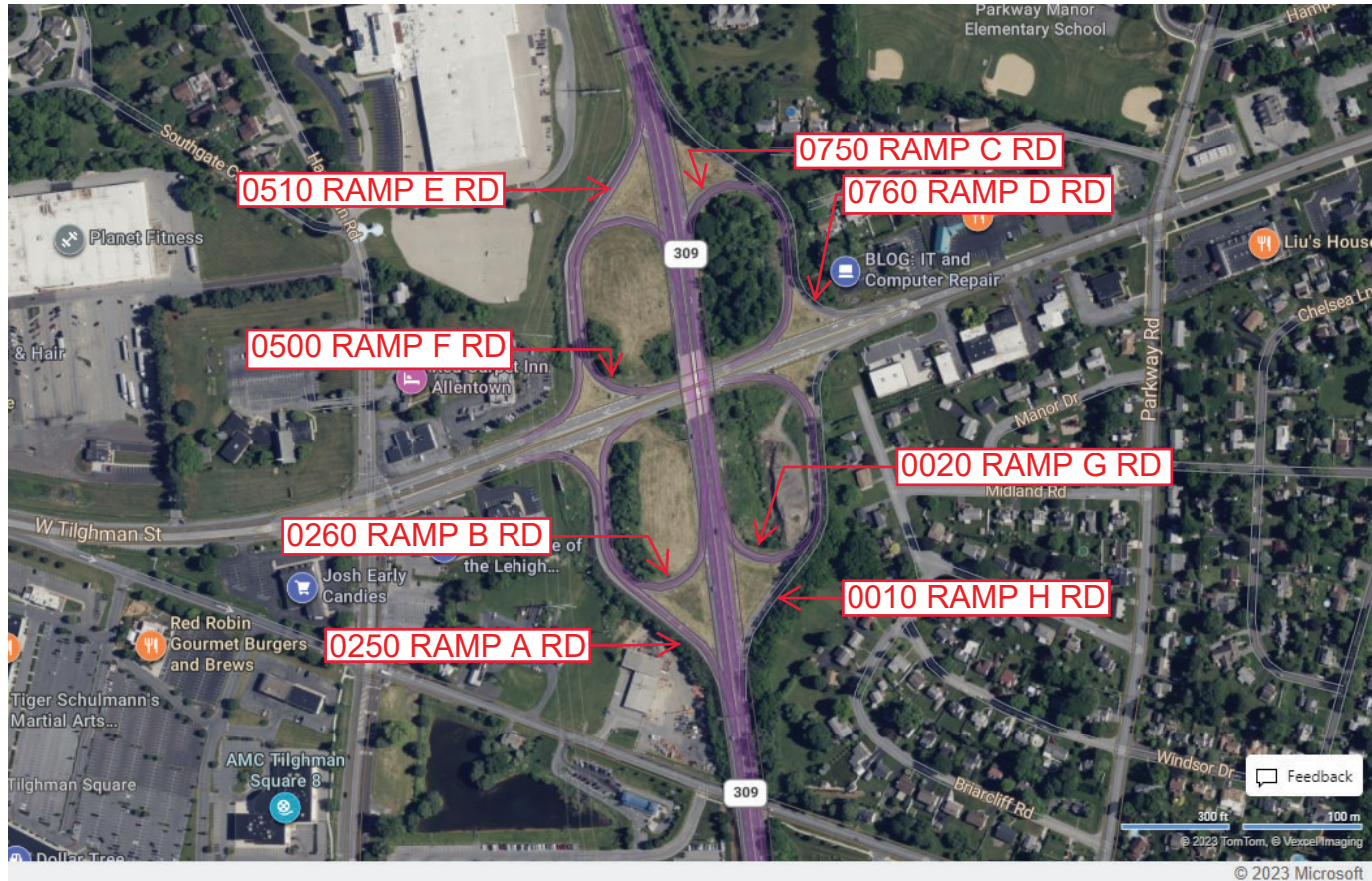
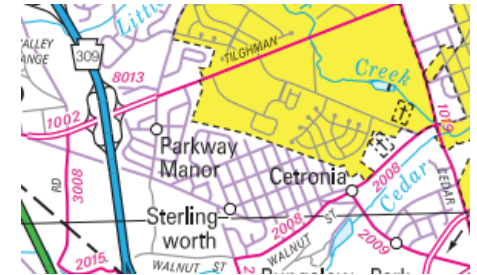
Ramp Segment Number and Ramp Segment Length Information:

Segment	Length	Segment	Length	Segment	Length	Segment	Length
0010	0862	0510	0825				
0020	0781	0750	0650				
0250	0765	0760	0772				
0260	0677						
0500	0744						

Primary Route Interchange Exit Number

Secondary Route Interchange Exit Number

PennDOT Type 10 Map View:



Last Date Modified:

Sep 14, 2023

County: 39

RMS Interchange Information

Print Form

Interchange Number: 8014

Bureau of Maintenance & Operations
Asset Management Division



Interchange Name: MACARTHUR RD INT

Intersecting SR's: US 22 & PA 145 MacArthur Rd

Ramp Segment Number and Ramp Segment Length Information:

Segment	Length	Segment	Length	Segment	Length	Segment	Length
0010	0803	0760	0802				
0020	0736						
0250	0900						
0500	0787						
0510	0907						

Primary Route Interchange Exit Number

Secondary Route Interchange Exit Number

PennDOT Type 10 Map View:



Last Date Modified:

Sep 15, 2023

County: 39

RMS Interchange Information

Print Form

Interchange Number: 8016

Bureau of Maintenance & Operations
Asset Management Division



Interchange Name: FULLERTON AV INT

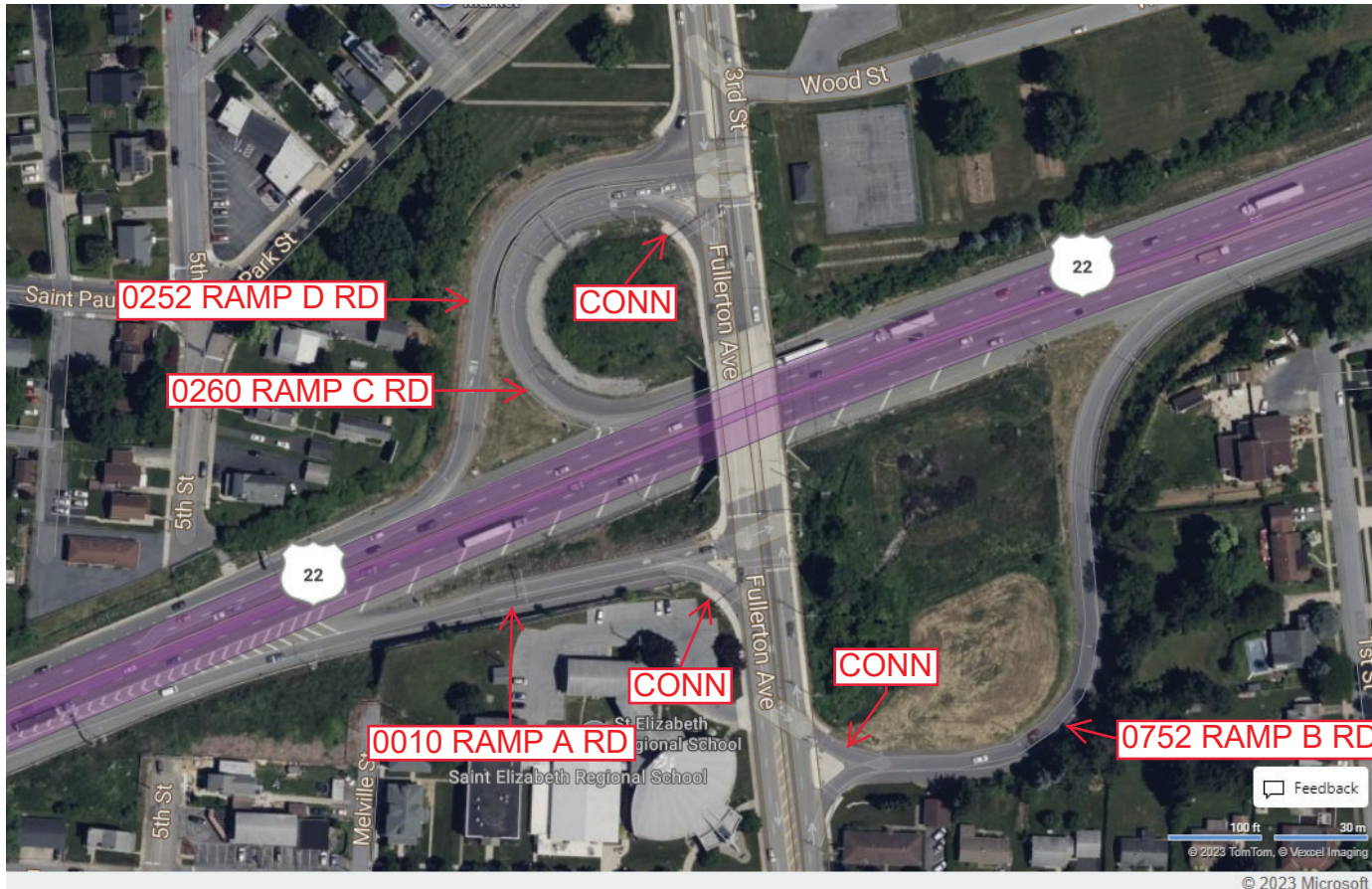
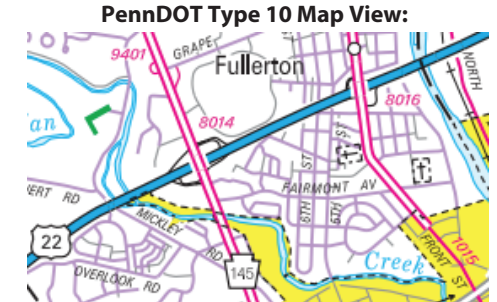
Intersecting SR's: US 22 & SR 1015 Fullerton Av

Ramp Segment Number and Ramp Segment Length Information:

Segment	Length	Segment	Length	Segment	Length	Segment	Length
0010	0411						
0252	0498						
0260	0411						
0752	0715						

Primary Route Interchange Exit Number

Secondary Route Interchange Exit Number



Last Date Modified:

Jan 23, 2025

County: 39

RMS Interchange Information

Print Form

Interchange Number: 8018

Bureau of Maintenance & Operations
Asset Management Division



Interchange Name: AIRPORT RD INT

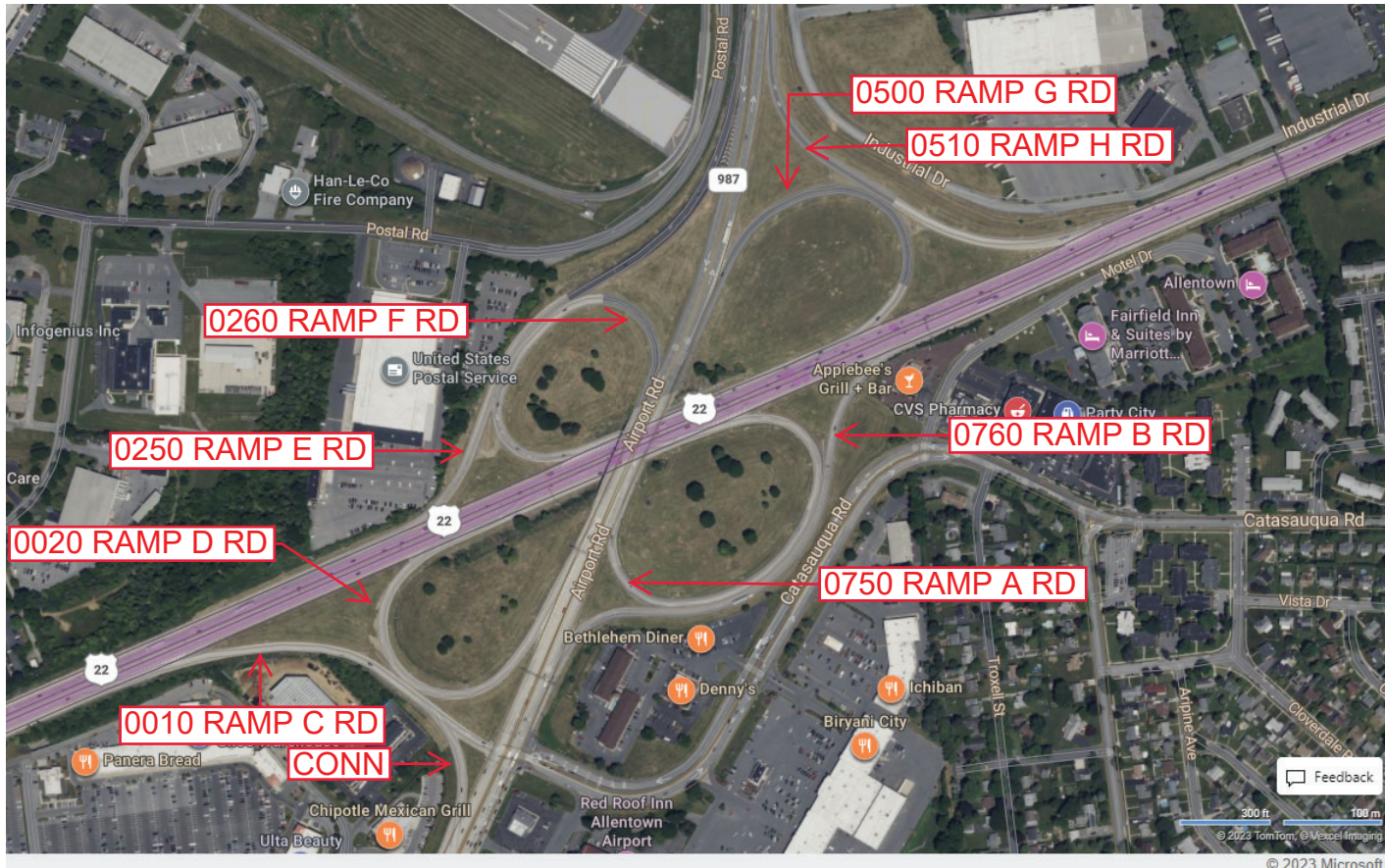
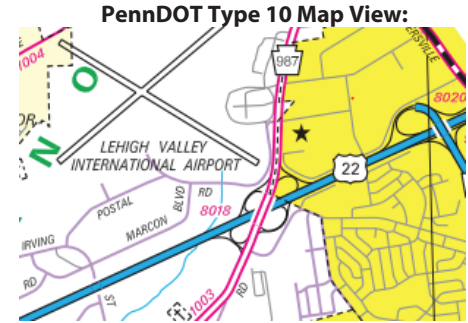
Intersecting SR's: US 22, PA 987 & SR 1003 Airport Rd

Ramp Segment Number and Ramp Segment Length Information:

Segment	Length	Segment	Length	Segment	Length	Segment	Length
0010	1143	0510	1277				
0020	1024	0750	1414				
0250	1567	0760	1524				
0260	1226						
0500	1062						

Primary Route Interchange Exit Number

Secondary Route Interchange Exit Number



Last Date Modified:

Sep 19, 2023

County: 39

RMS Interchange Information

Print Form

Interchange Number: 8020

Bureau of Maintenance & Operations
Asset Management Division



Interchange Name: BETHLEHEM INT

Intersecting SR's: US 22, PA 378 Spur Route & SR 9406

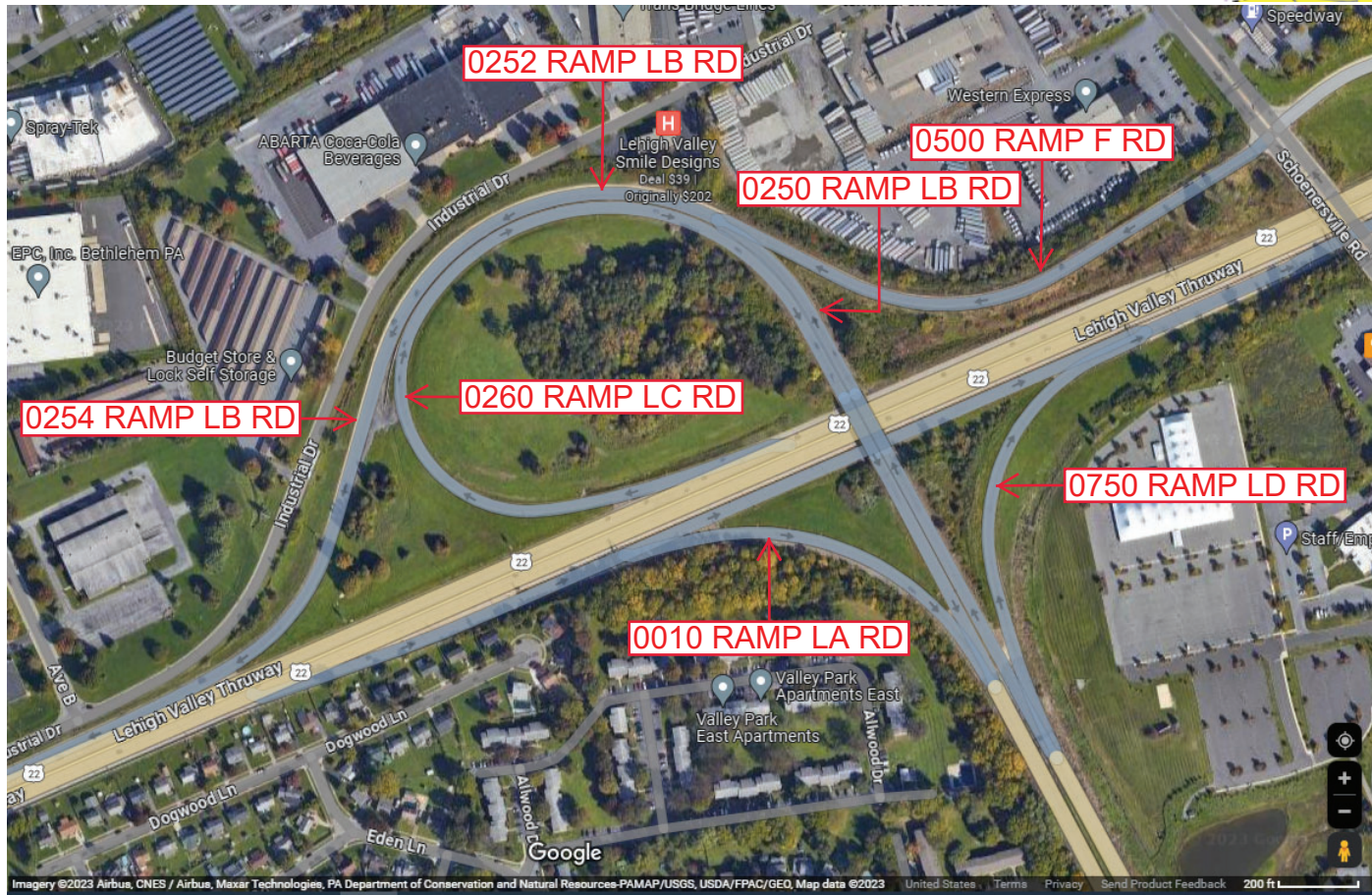
Ramp Segment Number and Ramp Segment Length Information:

Segment	Length	Segment	Length	Segment	Length	Segment	Length
0010	0694	0500	1385				
0250	0441	0750	0697				
0252	1156						
0254	0985						
0260	2400						

Primary Route
Interchange Exit
Number

Secondary Route
Interchange Exit
Number

PennDOT Type 10 Map View:



Last Date Modified:

Sep 20, 2023

County: 39

RMS Interchange Information

Print Form

Interchange Number: 8022

Bureau of Maintenance & Operations
Asset Management Division



Interchange Name: CENTER CITY INT

Intersecting SR's: PA 378 Spur Route & SR 1001 Third Av

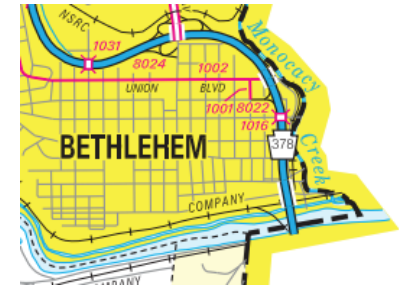
Ramp Segment Number and Ramp Segment Length Information:

Segment	Length	Segment	Length	Segment	Length	Segment	Length
0250	0740						
0260	0695						
0750	0715						

Primary Route Interchange Exit Number: 3

Secondary Route Interchange Exit Number

PennDOT Type 10 Map View:



County: 39

RMS Interchange Information

Print Form

Interchange Number: 8024

Bureau of Maintenance & Operations
Asset Management Division



Interchange Name: EIGHTH AVE INT

Intersecting SR's: PA 378 Spur Route & SR 1011 Eighth Av

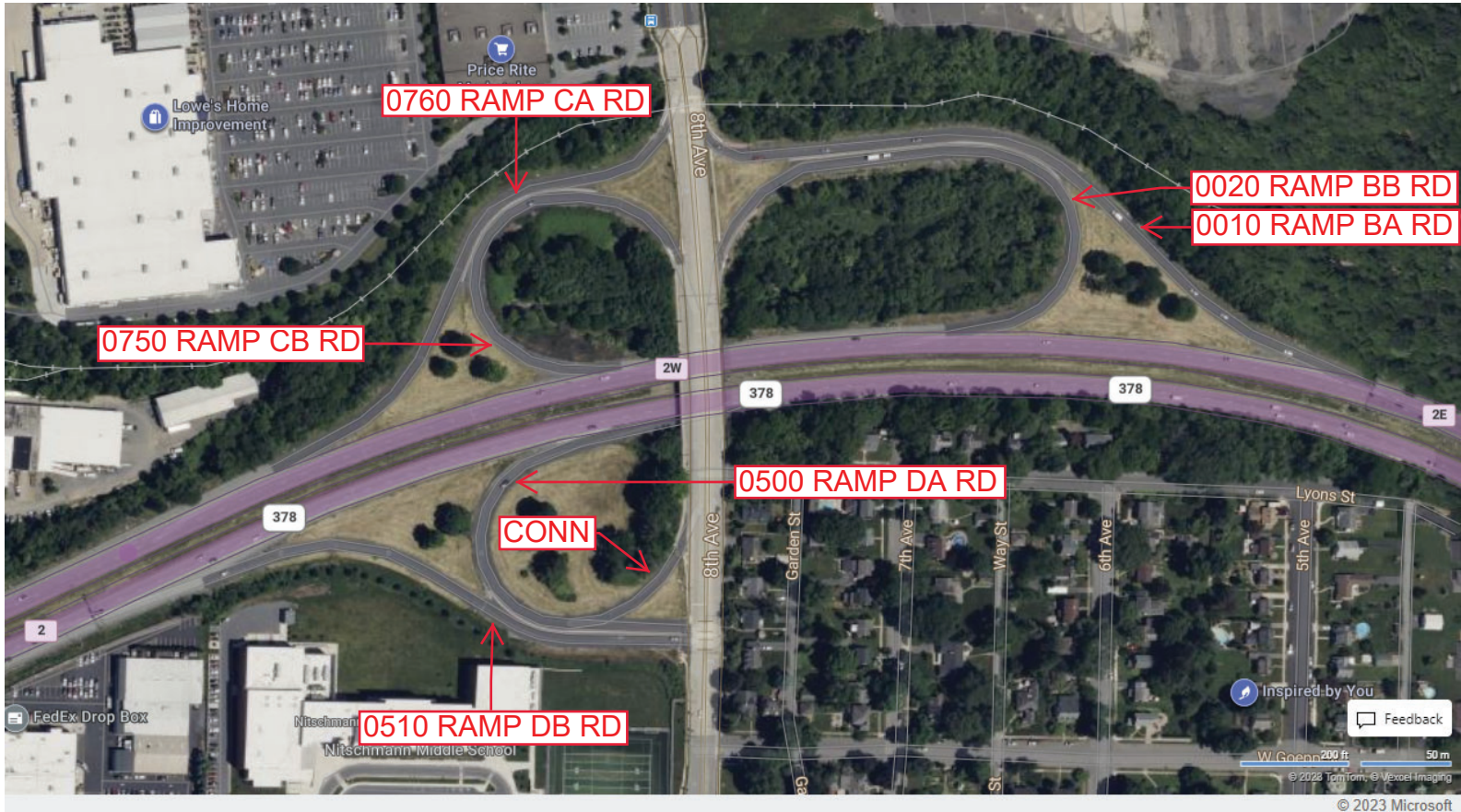
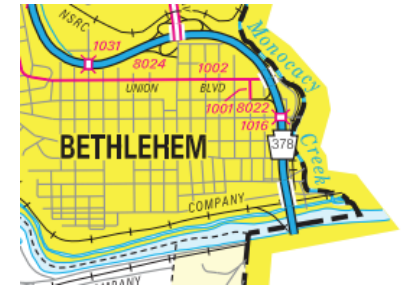
Ramp Segment Number and Ramp Segment Length Information:

Segment	Length	Segment	Length	Segment	Length	Segment	Length
0010	1224	0760	0905				
0020	1058						
0500	0887						
0510	0883						
0750	0756						

Primary Route Interchange Exit Number: 2

Secondary Route Interchange Exit Number:

PennDOT Type 10 Map View:



Last Date Modified: Sep 20, 2023

County: 39

RMS Interchange Information

Print Form

Interchange Number: 8026

Bureau of Maintenance & Operations
Asset Management Division



Interchange Name: CATASAUQUA RD INT

Intersecting SR's: PA 378 & CITY Catasauqua Rd

Ramp Segment Number and Ramp Segment Length Information:

Segment	Length	Segment	Length	Segment	Length	Segment	Length
0500	0718						
0510	0215						
0520	0799						

Primary Route Interchange Exit Number

1

Secondary Route Interchange Exit Number

PennDOT Type 10 Map View:



Last Date Modified:

Sep 20, 2023

County: 39

RMS Interchange Information

Print Form

Interchange Number: 8028

Bureau of Maintenance & Operations
Asset Management Division



Interchange Name: QUAKERTOWN & S 4TH INT

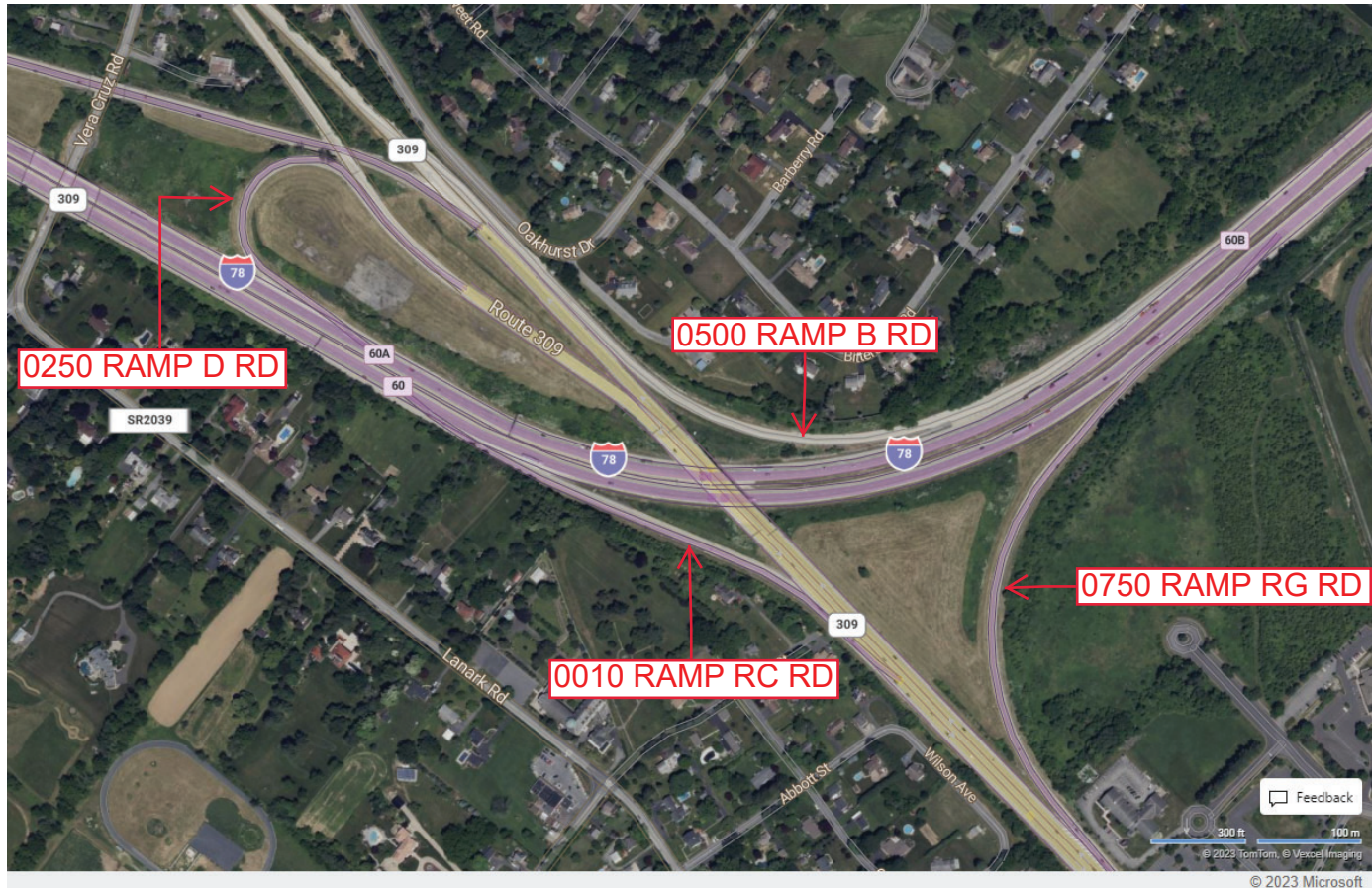
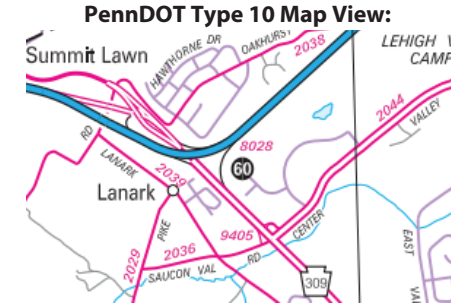
Intersecting SR's: I-78, PA 145 Pike Av & PA 309

Ramp Segment Number and Ramp Segment Length Information:

Segment	Length	Segment	Length	Segment	Length	Segment	Length
0010	0836						
0250	0641						
0500	2430						
0750	1555						

Primary Route Interchange Exit Number: 60, 60A

Secondary Route Interchange Exit Number: 60B



Last Date Modified:

Sep 21, 2023

County: 39

RMS Interchange Information

Print Form

Interchange Number: 8030

Bureau of Maintenance & Operations
Asset Management Division



Interchange Name: FOGELSVILLE & TREXLERTOWN INT

Intersecting SR's: US 222, PA 100 & PA 6100

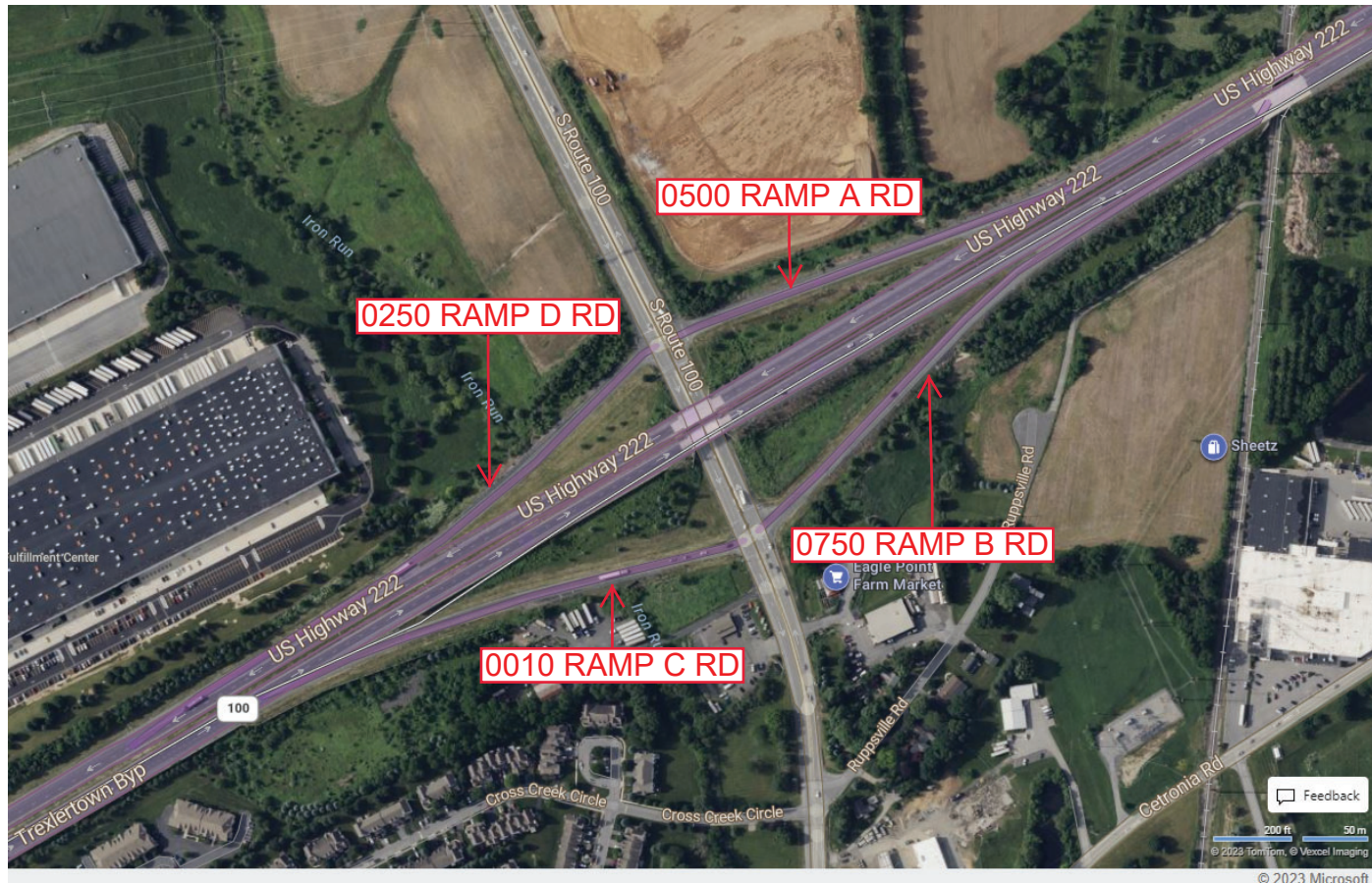
Ramp Segment Number and Ramp Segment Length Information:

Segment	Length	Segment	Length	Segment	Length	Segment	Length
0010	0996						
0250	0824						
0500	0873						
0750	1006						

Primary Route Interchange Exit Number

Secondary Route Interchange Exit Number

PennDOT Type 10 Map View:



Last Date Modified:

Sep 21, 2023

County: 39

RMS Interchange Information

Print Form

Interchange Number: 8032

Bureau of Maintenance & Operations
Asset Management Division



Interchange Name: BROOKESIDE RD INT

Intersecting SR's: US 222 & SR 2017 Brookside Rd

Ramp Segment Number and Ramp Segment Length Information:

Segment	Length	Segment	Length	Segment	Length	Segment	Length
0250	2024						

Primary Route
Interchange Exit
Number

Secondary Route
Interchange Exit
Number

PennDOT Type 10 Map View:



Last Date Modified:

Sep 21, 2023

County: **39**

RMS Interchange Information

Print Form

Interchange Number: **9101**

Bureau of Maintenance & Operations
Asset Management Division



Interchange Name: **WYE RD**

Intersecting SR's: **S Church St & PA 145 MacArthur Rd**

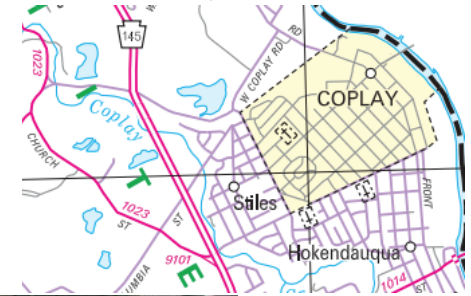
Ramp Segment Number and Ramp Segment Length Information:

Segment	Length	Segment	Length	Segment	Length	Segment	Length
0010	0500						

Primary Route Interchange Exit Number

Secondary Route Interchange Exit Number

PennDOT Type 10 Map View:



Feedback

100 ft 30 m

© 2023 TomTom, © Vexcel Imaging

© 2023 Microsoft

Last Date Modified: **Sep 21, 2023**

County: 39

RMS Interchange Information

Print Form

Interchange Number: 9102

Bureau of Maintenance & Operations
Asset Management Division



Interchange Name: WYE RD

Intersecting SR's: US 222, SR 2011 Kressler RD & SR 6222 Hamilton BI

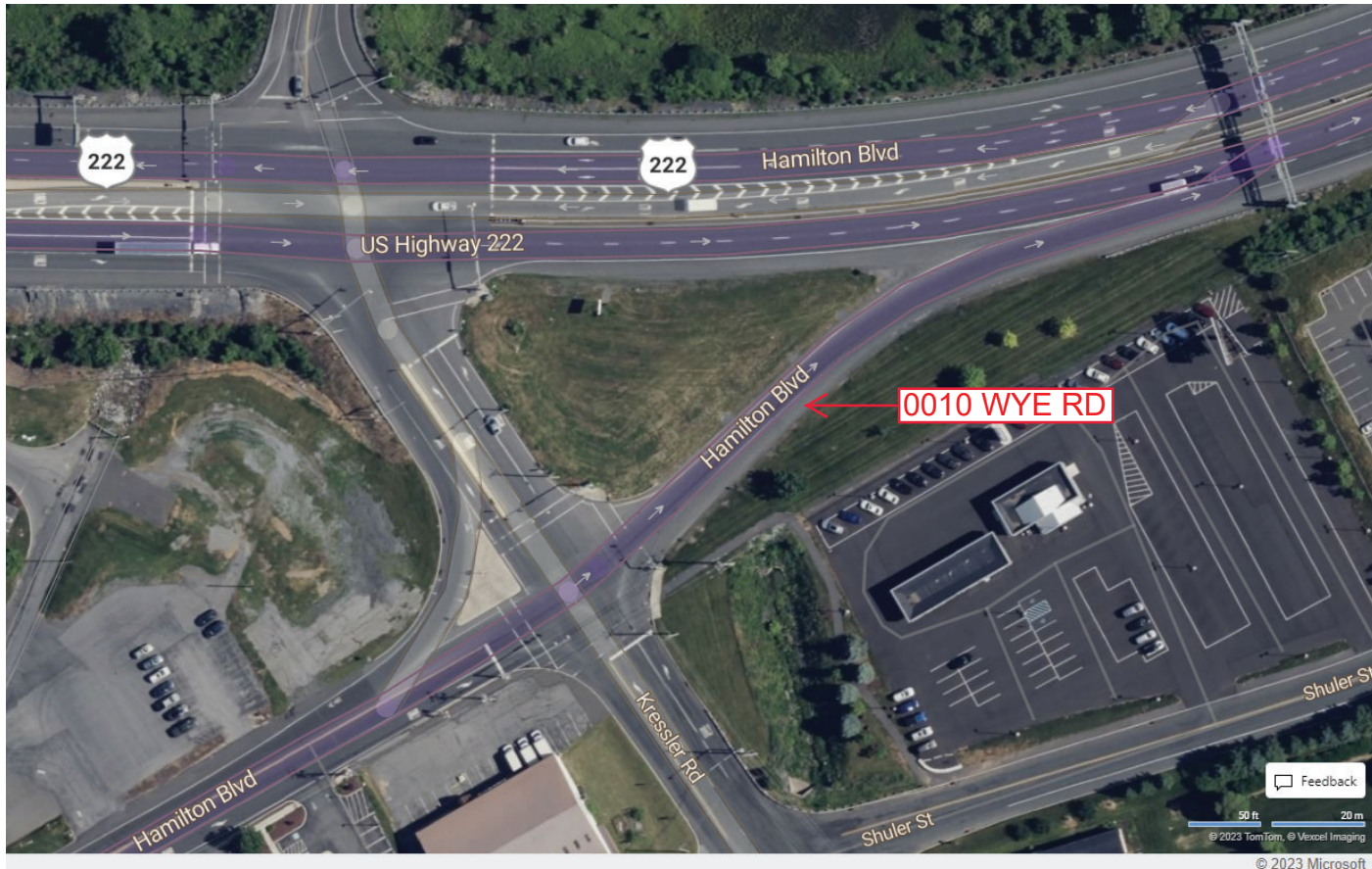
Ramp Segment Number and Ramp Segment Length Information:

Segment	Length	Segment	Length	Segment	Length	Segment	Length
0010	0328						

Primary Route Interchange Exit Number

Secondary Route Interchange Exit Number

PennDOT Type 10 Map View:



Feedback

50 ft 20 m

© 2023 TomTom. © Vexcel Imaging

© 2023 Microsoft

Last Date Modified:

Sep 22, 2023

County: 39

RMS Interchange Information

Print Form

Interchange Number: 9103

Bureau of Maintenance & Operations
Asset Management Division



Interchange Name: WYE RD

Intersecting SR's: PA 145 MacArthur Rd & SR 1027 Second St

Ramp Segment Number and Ramp Segment Length Information:

Segment	Length	Segment	Length	Segment	Length	Segment	Length
0010	0500						

Primary Route Interchange Exit Number

Secondary Route Interchange Exit Number

PennDOT Type 10 Map View:



Feedback

100 ft 30 m

© 2023 TomTom, © Vexcel Imaging

© 2023 Microsoft

Last Date Modified: Sep 22, 2023

County: 39

RMS Interchange Information

Print Form

Interchange Number: 9401

Bureau of Maintenance & Operations
Asset Management Division



Interchange Name: MACARTHUR RD & GRAPE ST

Intersecting SR's: PA 145 MacArthur Rd & (TWP) Grape St

Ramp Segment Number and Ramp Segment Length Information:

Segment	Length	Segment	Length	Segment	Length	Segment	Length
0010	0589						
0500	0542						

Primary Route
Interchange Exit
Number

Secondary Route
Interchange Exit
Number

PennDOT Type 10 Map View:



County: 39

RMS Interchange Information

Print Form

Interchange Number: 9402

Bureau of Maintenance & Operations
Asset Management Division



Interchange Name: MACARTHUR RD & SCHADT AV

Intersecting SR's: PA 145 MacArthur Rd, SR 1008 Schadt Av & (TWP) Hemlock

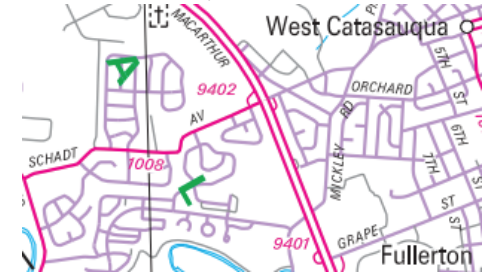
Ramp Segment Number and Ramp Segment Length Information:

Segment	Length	Segment	Length	Segment	Length	Segment	Length
0010	0362						
0500	0440						

Primary Route
Interchange Exit
Number

Secondary Route
Interchange Exit
Number

PennDOT Type 10 Map View:



Last Date Modified:

Sep 22, 2023

County: 39

RMS Interchange Information

Print Form

Interchange Number: 9403

Bureau of Maintenance & Operations
Asset Management Division



Interchange Name: MACARTHUR RD & EBERHART RD

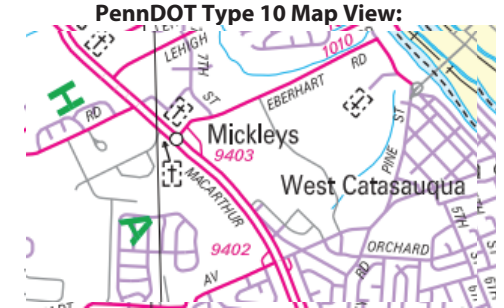
Intersecting SR's: PA 145 MacArthur Rd & SR 1010 Eberhart Rd

Ramp Segment Number and Ramp Segment Length Information:

Segment	Length	Segment	Length	Segment	Length	Segment	Length
0010	0456						

Primary Route
Interchange Exit
Number

Secondary Route
Interchange Exit
Number



Last Date Modified:

Sep 22, 2023

County: **39**

RMS Interchange Information

Print Form

Interchange Number: **9405**

Bureau of Maintenance & Operations
Asset Management Division



Interchange Name: **SAUCON VALLEY RD & CENTER VALLEY RD**

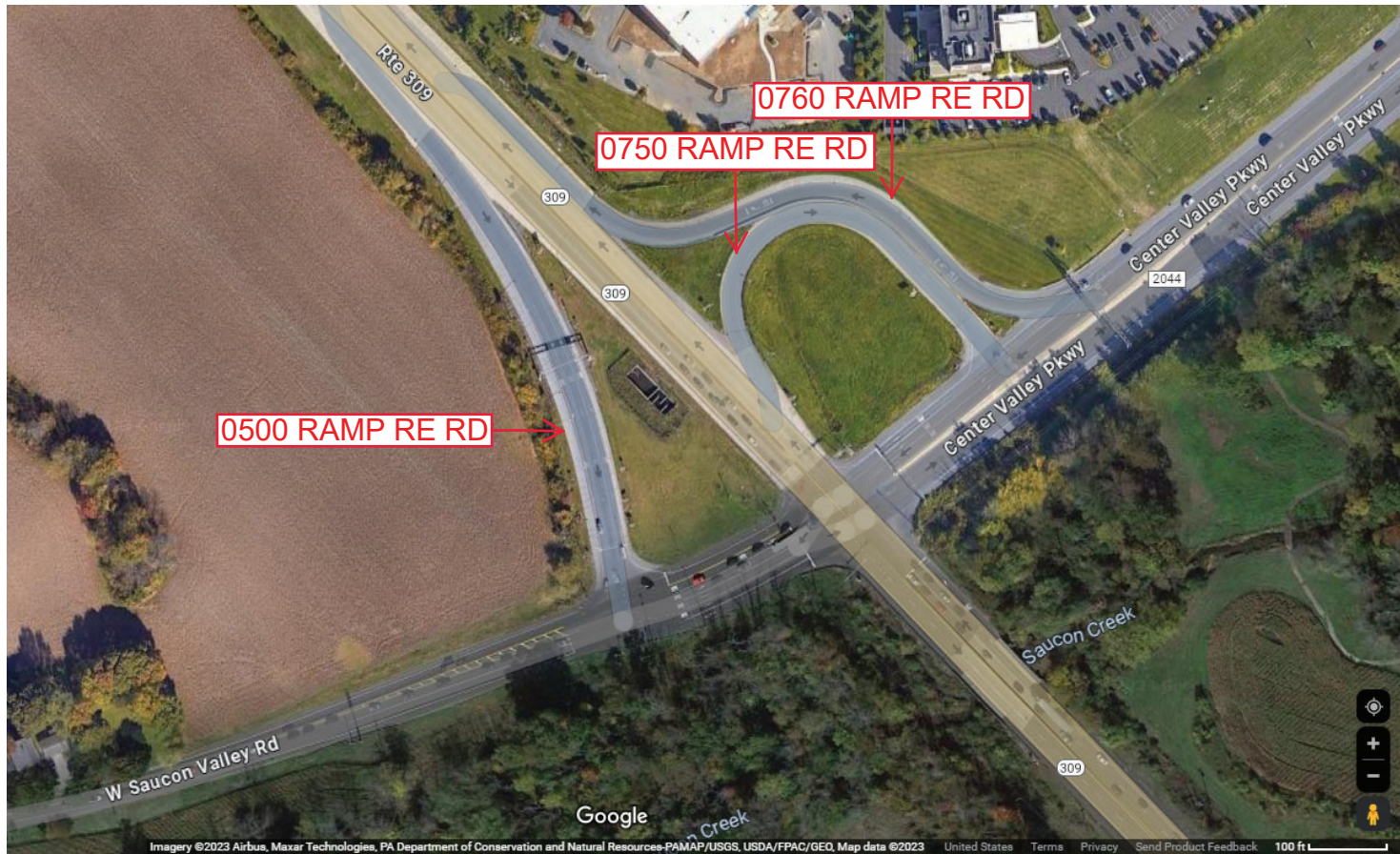
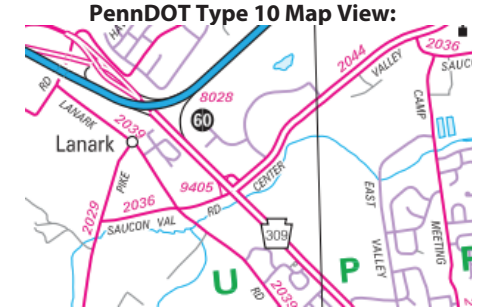
Intersecting SR's: **PA 309, SR 2036 & SR 2044 Center Valley Rd**

Ramp Segment Number and Ramp Segment Length Information:

Segment	Length	Segment	Length	Segment	Length	Segment	Length
0500	0543						
0750	0526						
0760	0596						

Primary Route
Interchange Exit
Number

Secondary Route
Interchange Exit
Number



Last Date Modified:

Sep 25, 2023

County: 39

RMS Interchange Information

Print Form

Interchange Number: 9406

Bureau of Maintenance & Operations
Asset Management Division



Interchange Name: LEHIGH VALLEY THRUWAY

Intersecting SR's: US 22, SR 8020 & SR 9402 (Co 48)

Ramp Segment Number and Ramp Segment Length Information:

Segment	Length	Segment	Length	Segment	Length	Segment	Length
0010	2303						

Primary Route
Interchange Exit
Number

Secondary Route
Interchange Exit
Number

PennDOT Type 10 Map View:

