

County: 45

RMS Interchange Information

Print Form

Interchange Number: 8002

Bureau of Maintenance & Operations
Asset Management Division



Interchange Name: BLAKESLEE INT

Intersecting SR's: I-80 Keystone Shortway Hw & PA 115

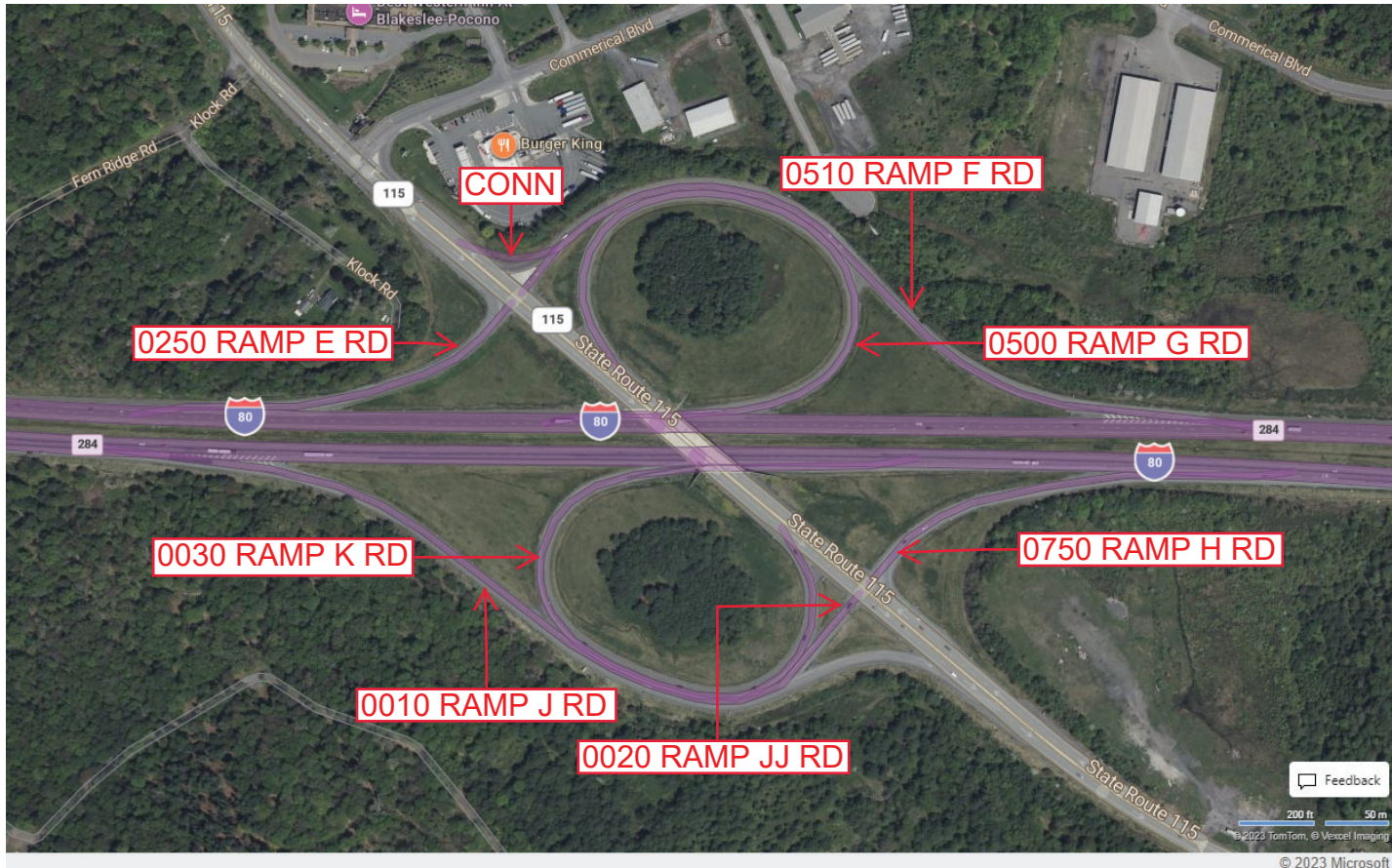
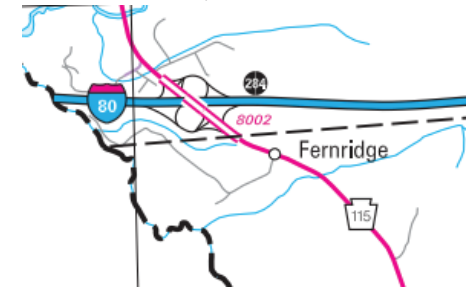
Ramp Segment Number and Ramp Segment Length Information:

Segment	Length	Segment	Length	Segment	Length	Segment	Length
0010	1914	0510	1840				
0020	0252	0750	0727				
0030	1503						
0250	0560						
0500	1581						

Primary Route Interchange Exit Number: 284

Secondary Route Interchange Exit Number

PennDOT Type 10 Map View:



Last Date Modified: Jan 23, 2025

County: 45

RMS Interchange Information

Print Form

Interchange Number: 8004

Bureau of Maintenance & Operations
Asset Management Division



Interchange Name: I-80 & I-380 INT

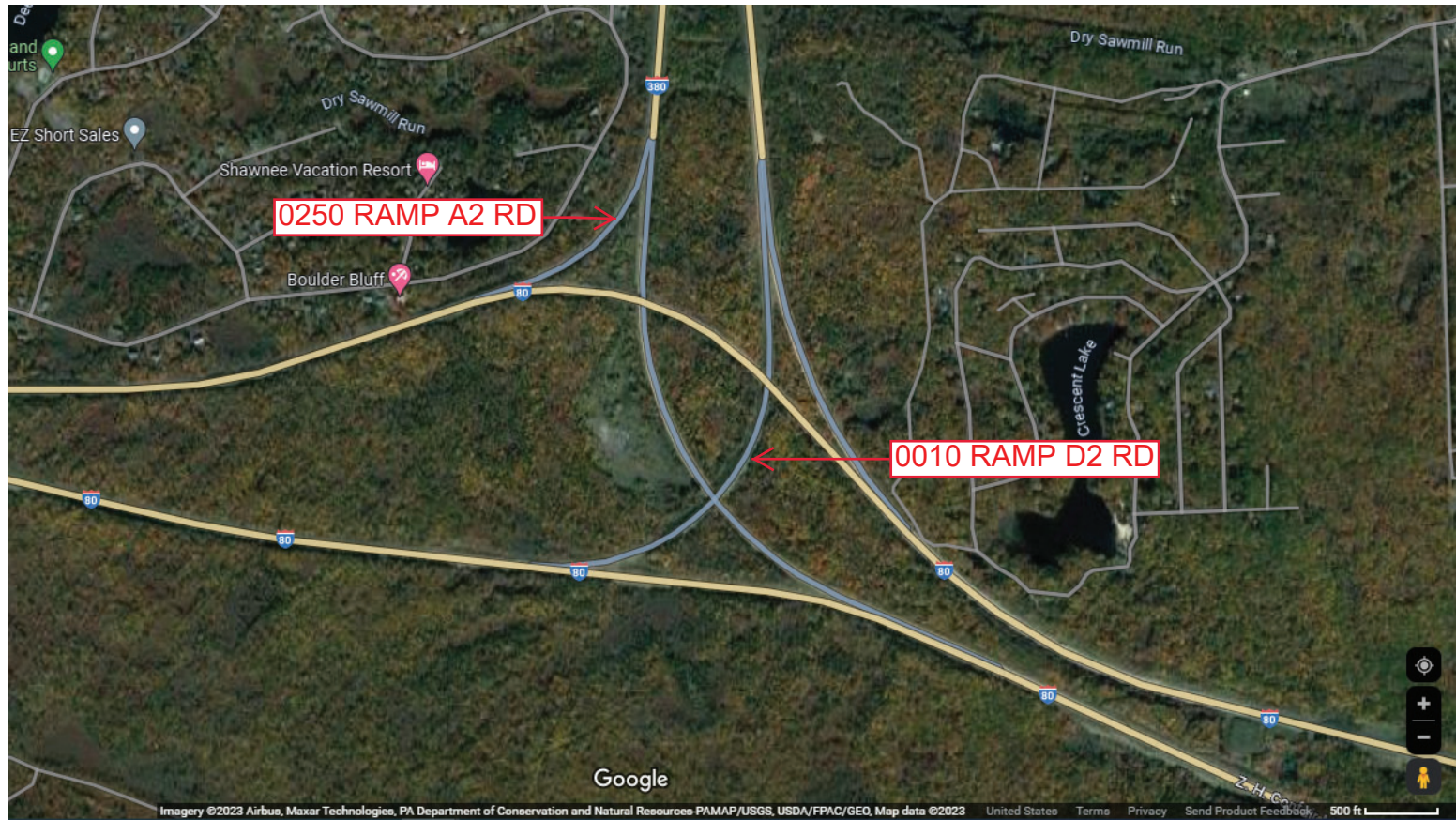
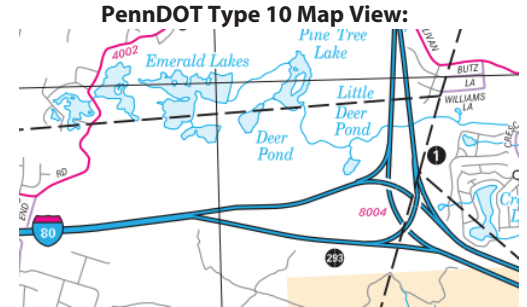
Intersecting SR's: I-80 Keystone Shortway Hw & I-380

Ramp Segment Number and Ramp Segment Length Information:

Segment	Length	Segment	Length	Segment	Length	Segment	Length
0010	3090						
0250	1410						

Primary Route Interchange Exit Number: 293

Secondary Route Interchange Exit Number: 1



Last Date Modified: Sep 29, 2023

County: 45

RMS Interchange Information

Print Form

Interchange Number: 8006

Bureau of Maintenance & Operations
Asset Management Division



Interchange Name: SCOTRUN INT

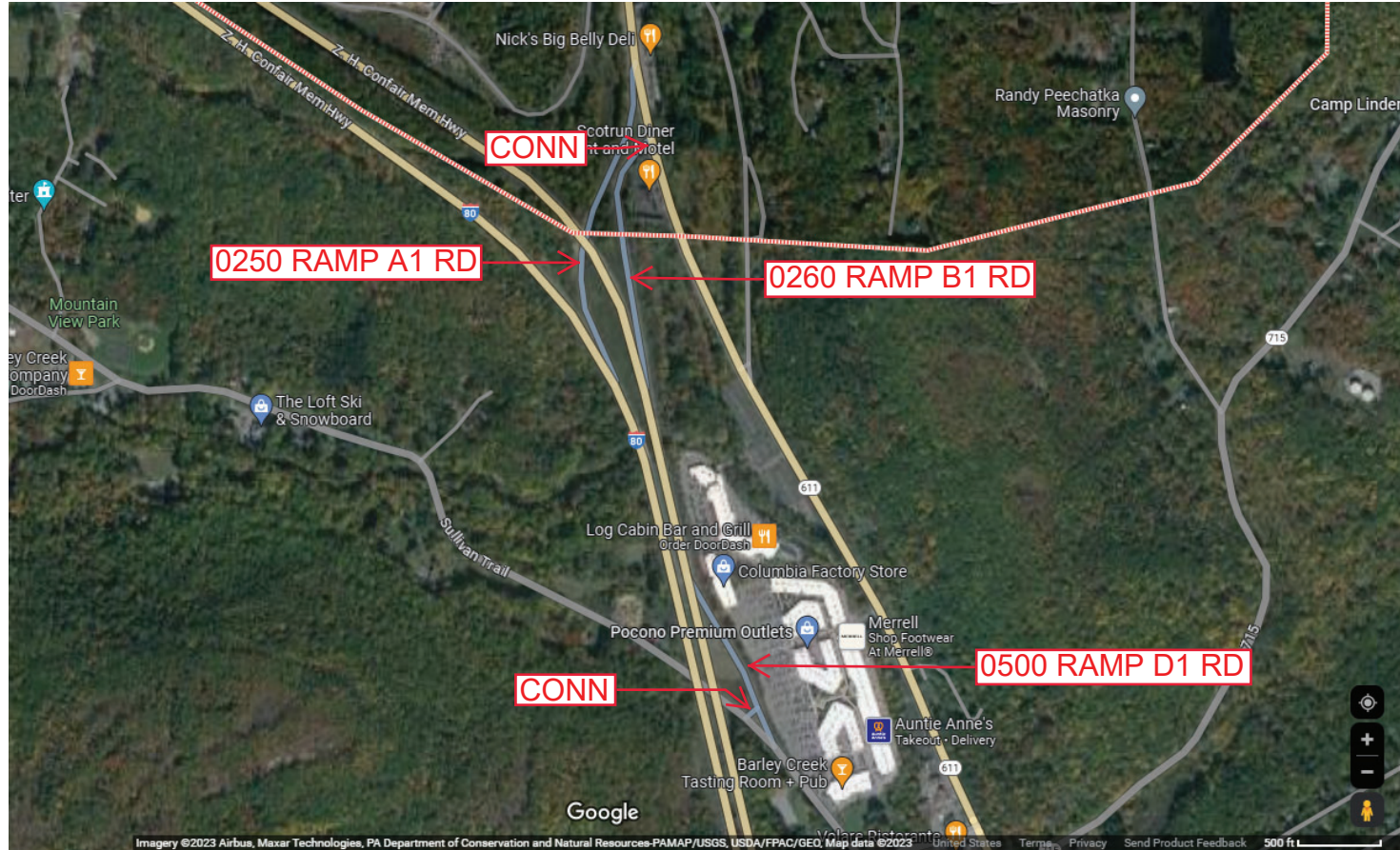
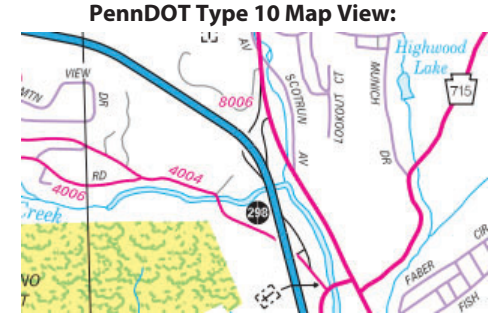
Intersecting SR's: I-80, PA 611 Jonas Rd & SR 4004 Sullivan Tr

Ramp Segment Number and Ramp Segment Length Information:

Segment	Length	Segment	Length	Segment	Length	Segment	Length
0250	1613						
0260	1301						
0500	0906						

Primary Route Interchange Exit Number: 298

Secondary Route Interchange Exit Number



Last Date Modified: Sep 29, 2023

County: 45

RMS Interchange Information

Print Form

Interchange Number: 8007

Bureau of Maintenance & Operations
Asset Management Division



Interchange Name: SCIOTA INT

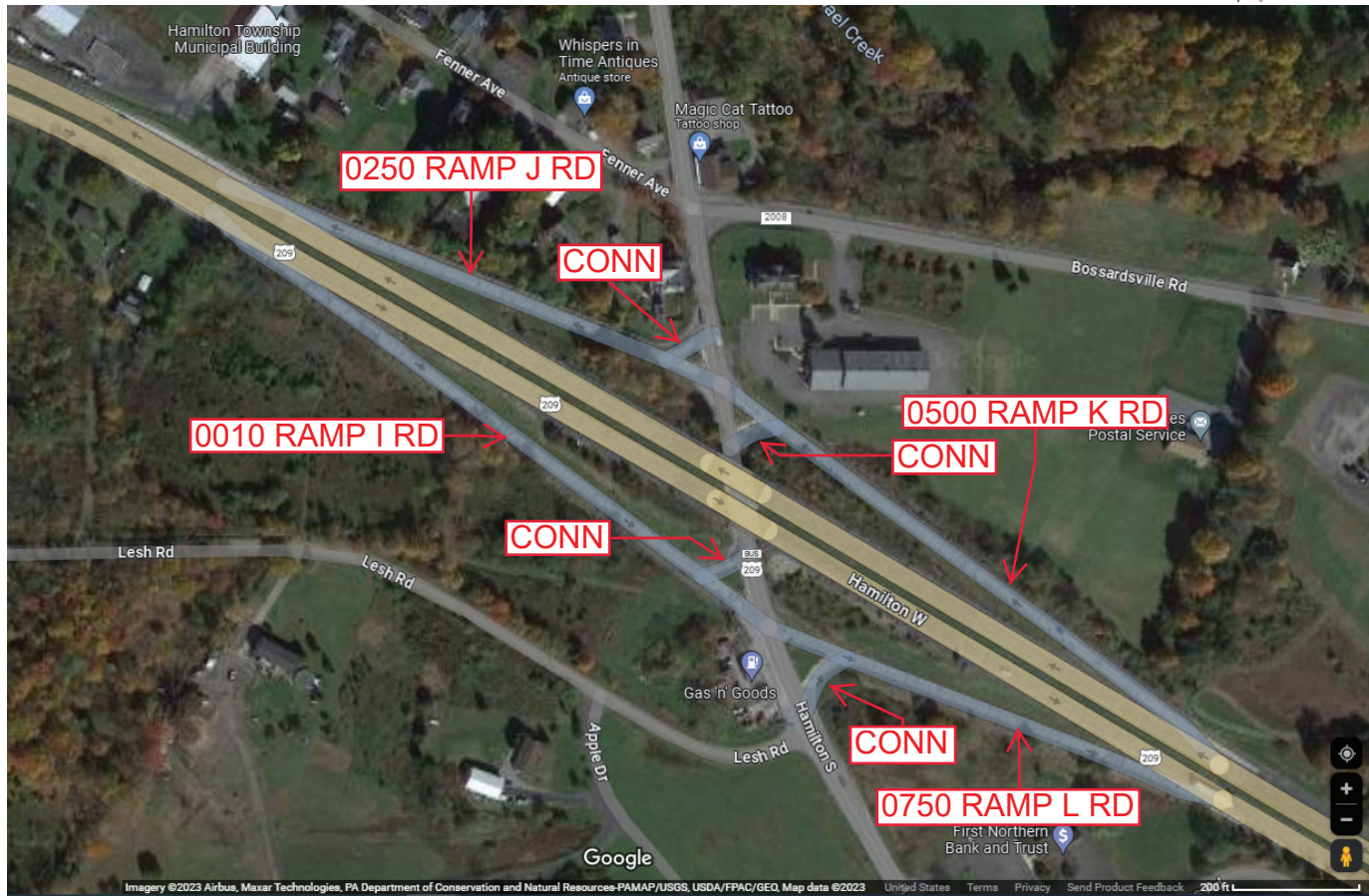
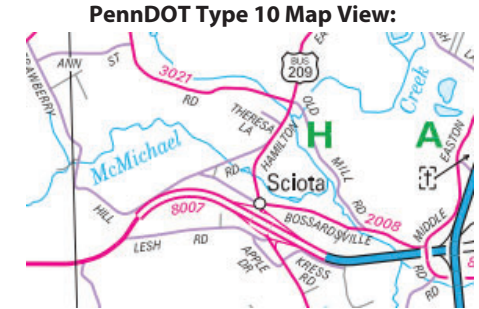
Intersecting SR's: US 209, Business 209 & SR 2012 Hamilton Rd

Ramp Segment Number and Ramp Segment Length Information:

Segment	Length	Segment	Length	Segment	Length	Segment	Length
0010	0930						
0250	0704						
0500	0880						
0750	0644						

Primary Route Interchange Exit Number

Secondary Route Interchange Exit Number



Last Date Modified: Sep 29, 2023

County: 45

RMS Interchange Information

Print Form

Interchange Number: 8008

Bureau of Maintenance & Operations
Asset Management Division



Interchange Name: TANNERSVILLE INT

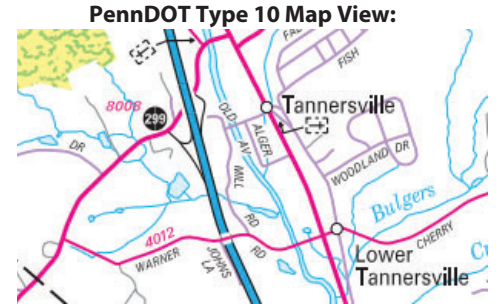
Intersecting SR's: I-80 Keystone Shortway Hw & PA 715

Ramp Segment Number and Ramp Segment Length Information:

Segment	Length	Segment	Length	Segment	Length	Segment	Length
0500	0706						
0750	0679						
0760	1161						

Primary Route Interchange Exit Number: 299

Secondary Route Interchange Exit Number



Last Date Modified: Oct 2, 2023

County: 45

RMS Interchange Information

Print Form

Interchange Number: 8009

Bureau of Maintenance & Operations
Asset Management Division



Interchange Name: STROUDSBURG INT

Intersecting SR's: US 209 & PA 33

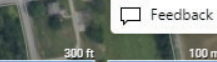
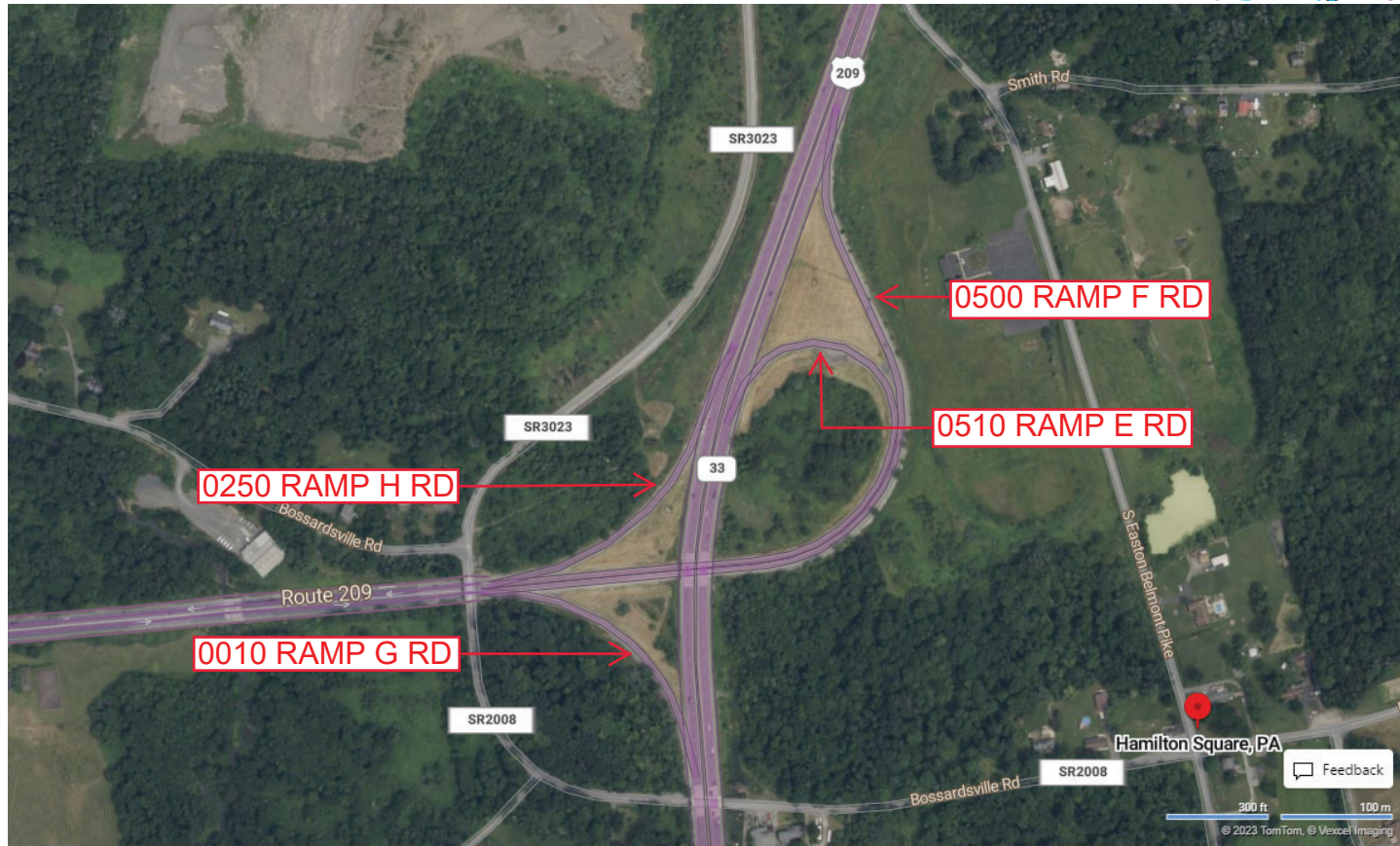
Ramp Segment Number and Ramp Segment Length Information:

Segment	Length	Segment	Length	Segment	Length	Segment	Length
0010	0607						
0250	0621						
0500	1662						
0510	1428						

Primary Route
Interchange Exit
Number

Secondary Route
Interchange Exit
Number

PennDOT Type 10 Map View:



© 2023 Microsoft

Last Date Modified:

Oct 2, 2023

County: **45**

RMS Interchange Information

Print Form

Interchange Number: **8010**

Bureau of Maintenance & Operations
Asset Management Division



Interchange Name: **BARTONSVILLE INT**

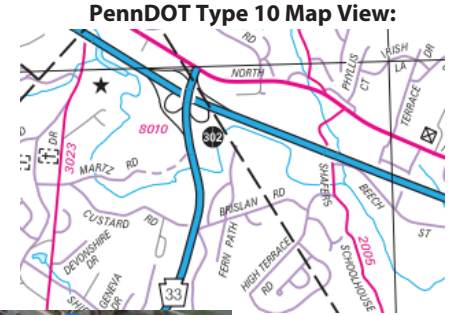
Intersecting SR's: **I-80 Keystone Shortway Hw & PA 33**

Ramp Segment Number and Ramp Segment Length Information:

Segment	Length	Segment	Length	Segment	Length	Segment	Length
0010	1959	0750	0856				
0020	1110						
0250	1150						
0500	0579						
0510	1128						

Primary Route Interchange Exit Number: **302**

Secondary Route Interchange Exit Number: **302A/302B**



Last Date Modified:

Nov 7, 2024

County: 45

RMS Interchange Information

Print Form

Interchange Number: 8011

Bureau of Maintenance & Operations
Asset Management Division



Interchange Name: SNYDERSVILLE INT

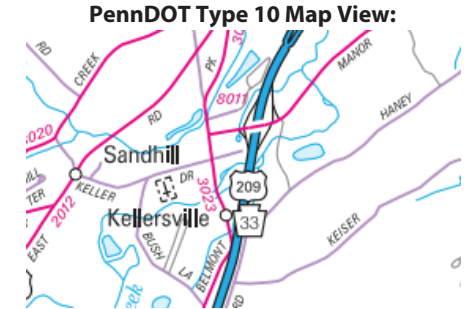
Intersecting SR's: US 209 & SR 2010 Manor Dr

Ramp Segment Number and Ramp Segment Length Information:

Segment	Length	Segment	Length	Segment	Length	Segment	Length
0010	0450						
0250	0423						
0500	0503						
0750	0550						

Primary Route Interchange Exit Number

Secondary Route Interchange Exit Number



Last Date Modified: Oct 10, 2023

County: 45

RMS Interchange Information

Bureau of Maintenance & Operations
Asset Management Division

Print Form



Interchange Number: 8012

Interchange Name: NINTH STREET INT

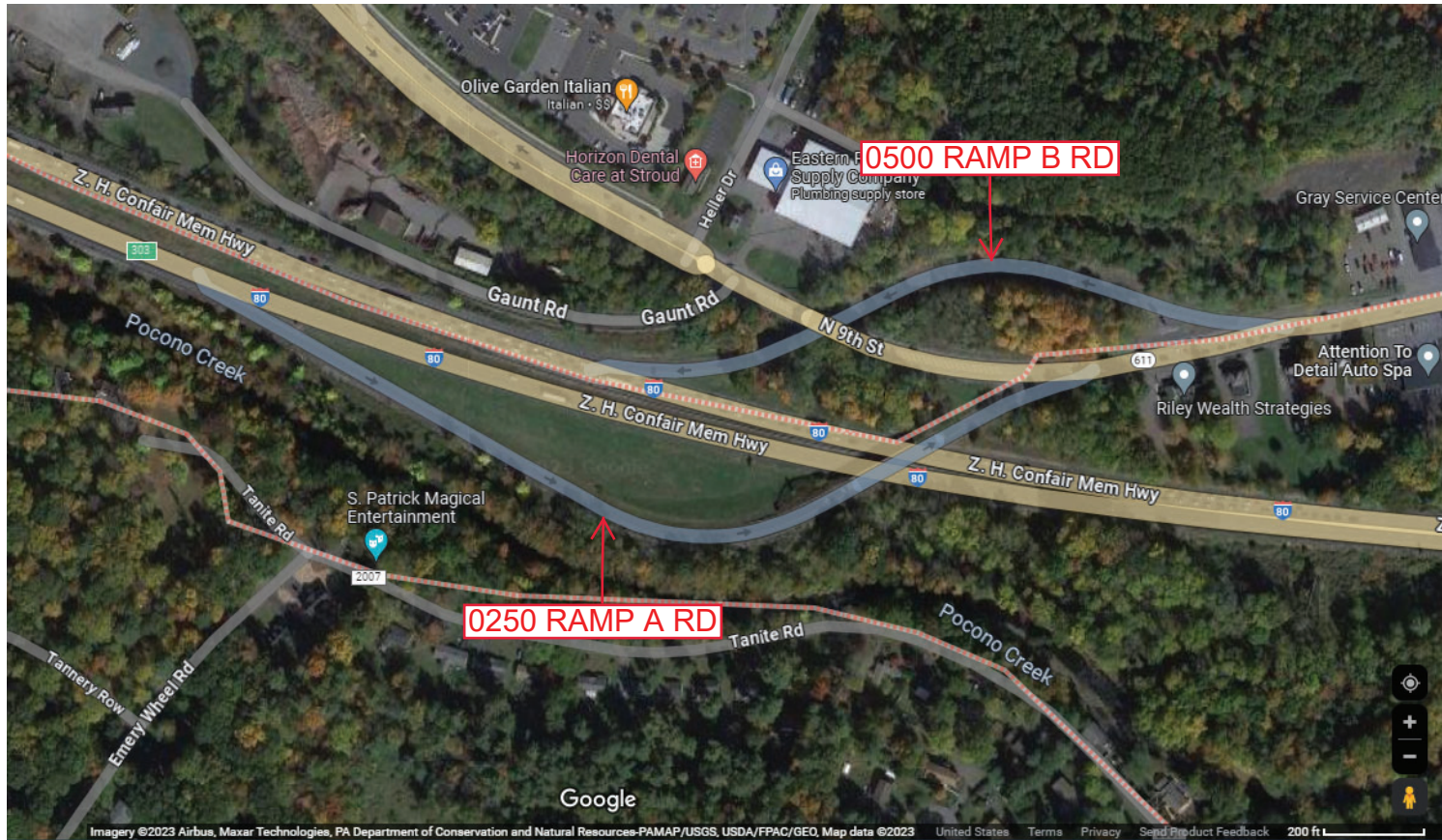
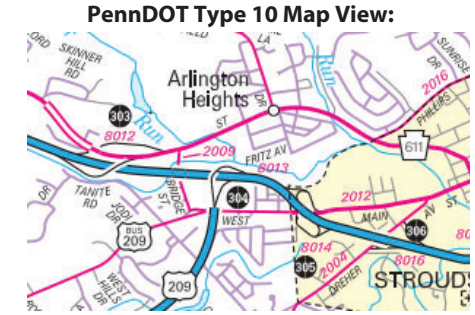
Intersecting SR's: I-80 Keystone Shortway Hw & PA 611 Jonas Rd

Ramp Segment Number and Ramp Segment Length Information:

Segment	Length	Segment	Length	Segment	Length	Segment	Length
0250	1748						
0500	1191						

Primary Route Interchange Exit Number: 303

Secondary Route Interchange Exit Number



Last Date Modified:

Oct 11, 2023

County: **45**

RMS Interchange Information

Print Form

Interchange Number: **8013**

Bureau of Maintenance & Operations
Roadway Management Division



Interchange Name: **SYNDERSVILLE**

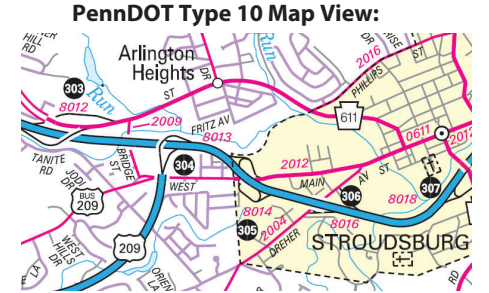
Intersecting SR's: **I-80 Keystone Shortway Hw & US 209**

Ramp Segment Number and Ramp Segment Length Information:

Segment	Length	Segment	Length	Segment	Length	Segment	Length
0500	1815						
0750	1032						

Primary Route Interchange Exit Number: **304**

Secondary Route Interchange Exit Number:



Last Date Modified: **Jul 17, 2020**

County: 45

RMS Interchange Information

Print Form

Bureau of Maintenance & Operations
Roadway Management Division



Interchange Number: 8014

Interchange Name: MAIN ST

Intersecting SR's: I-80 Keystone Shortway Hw & SR 2012 W Main St

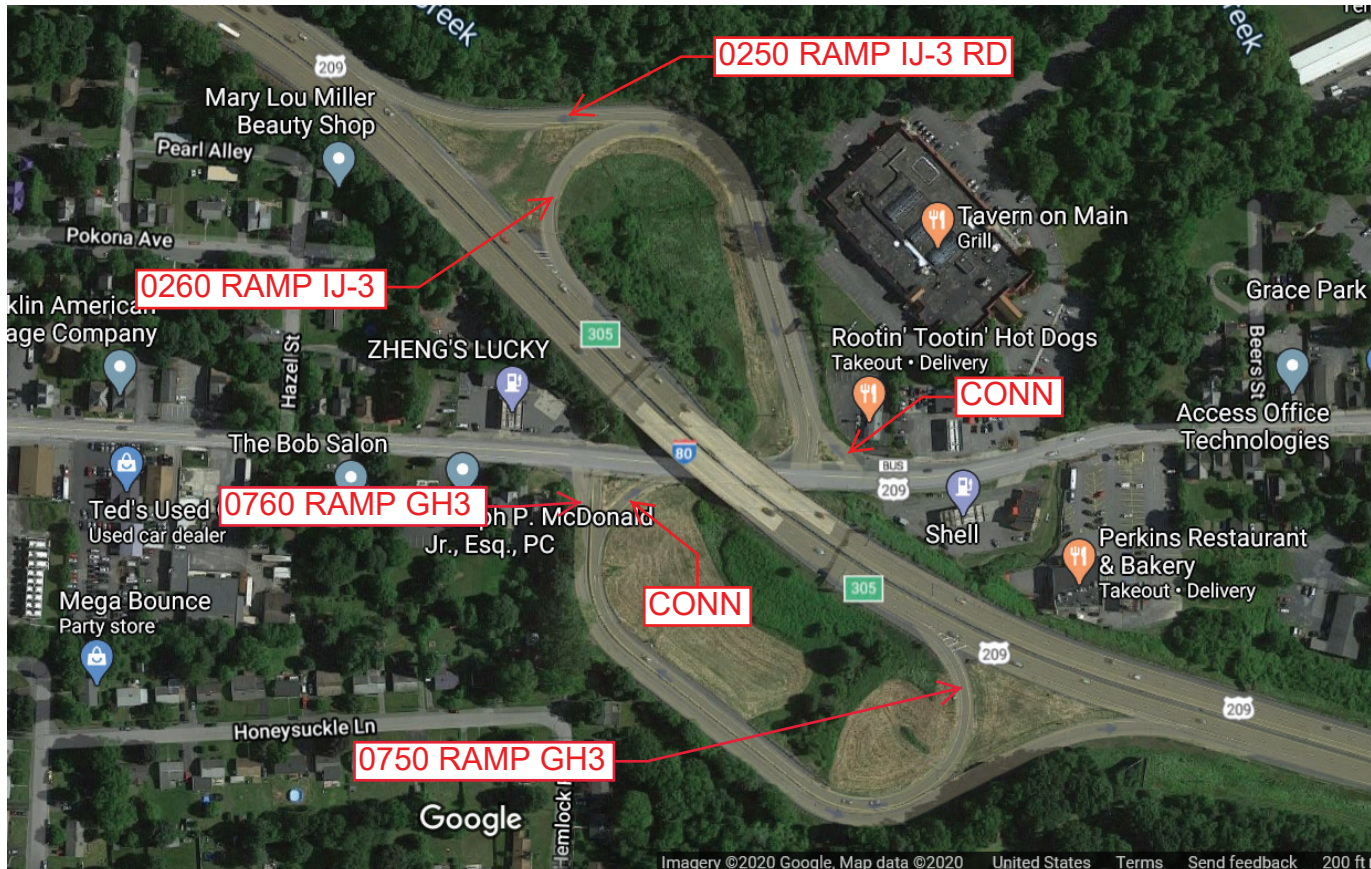
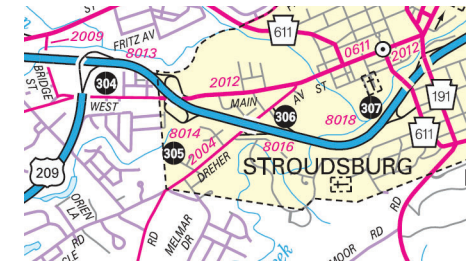
Ramp Segment Number and Ramp Segment Length Information:

Segment	Length	Segment	Length	Segment	Length	Segment	Length
0250	1105						
0260	0926						
0750	1125						
0760	1284						

Primary Route Interchange Exit Number: 305

Secondary Route Interchange Exit Number

PennDOT Type 10 Map View:



Last Date Modified: Jul 17, 2020

County: 45

RMS Interchange Information

Print Form

Interchange Number: 8016

Bureau of Maintenance & Operations
Asset Management Division



Interchange Name: DREHER AVE INT

Intersecting SR's: I-80 Keystone Shortway Hw & SR 2004 Dreher Av

Ramp Segment Number and Ramp Segment Length Information:

Segment	Length	Segment	Length	Segment	Length	Segment	Length
0500	0819						
0750	0593						

Primary Route Interchange Exit Number: 306

Secondary Route Interchange Exit Number

PennDOT Type 10 Map View:



Last Date Modified: Oct 13, 2023

County: 45

RMS Interchange Information

Print Form

Interchange Number: 8017

Bureau of Maintenance & Operations
Asset Management Division



Interchange Name: SAYLORSBURG INT

Intersecting SR's: PA 33, SR 2004 Cherry Valley Rd & SR 3017

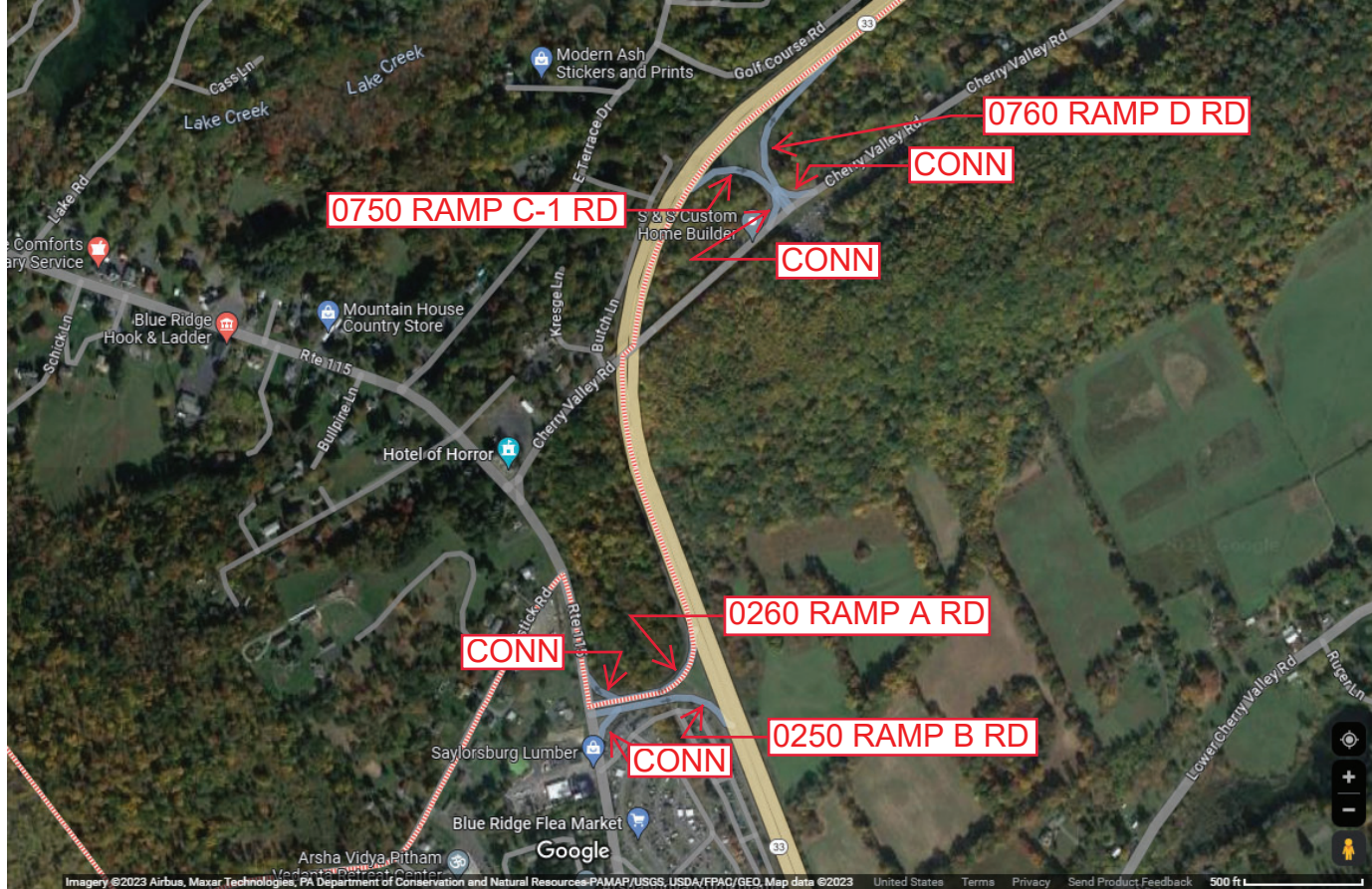
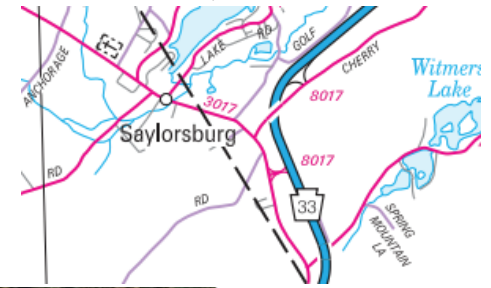
Ramp Segment Number and Ramp Segment Length Information:

Segment	Length	Segment	Length	Segment	Length	Segment	Length
0250	0567						
0260	0533						
0750	0392						
0760	0667						

Primary Route
Interchange Exit
Number

Secondary Route
Interchange Exit
Number

PennDOT Type 10 Map View:



Last Date Modified: Sep 25, 2024

County: 45

RMS Interchange Information

Print Form

Interchange Number: 8018

Bureau of Maintenance & Operations
Asset Management Division



Interchange Name: PARK AVE INT

Intersecting SR's: I-80, PA 191 Broad St & PA 611 Park Ave

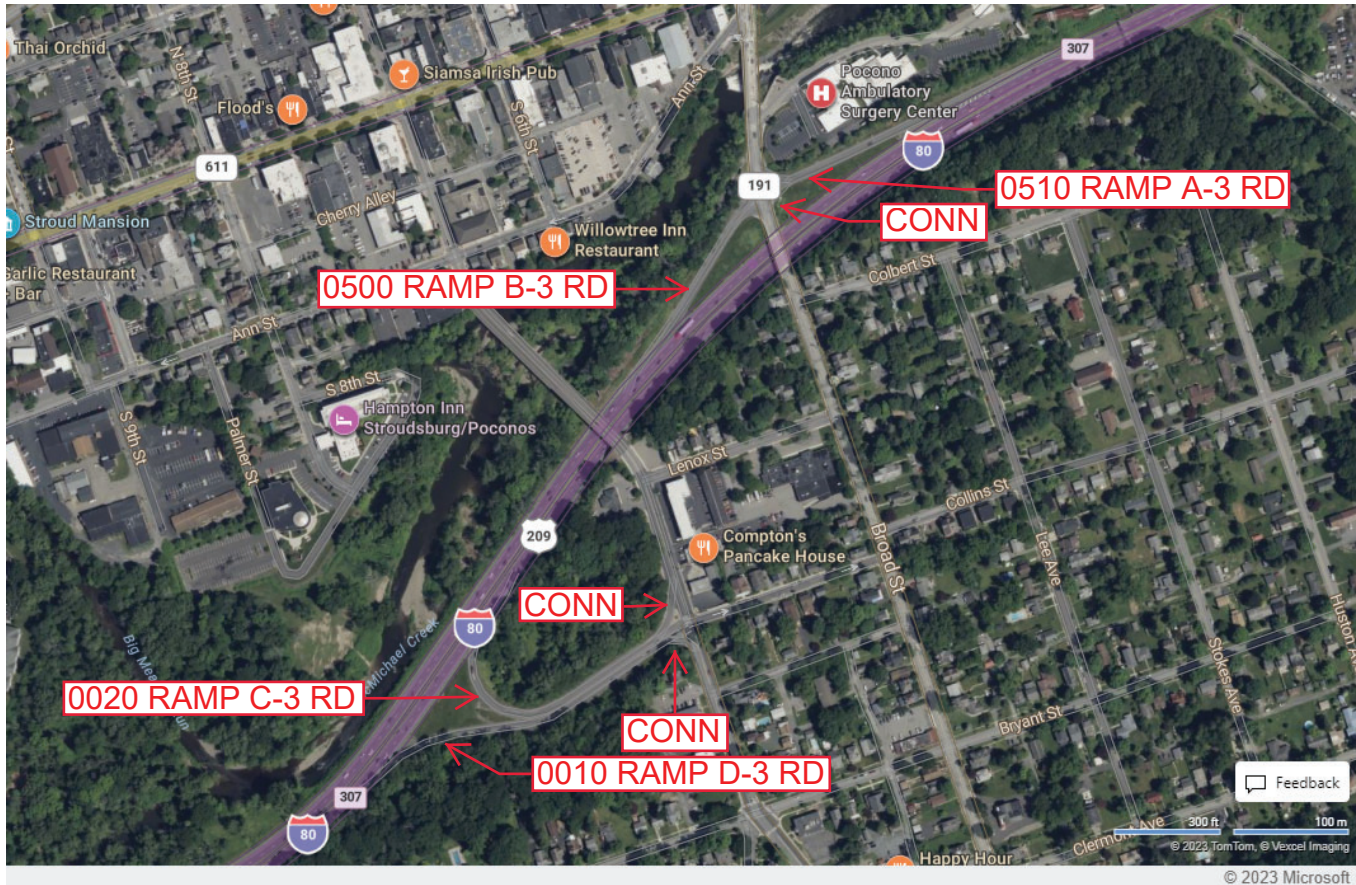
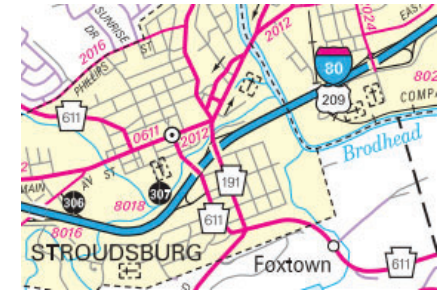
Ramp Segment Number and Ramp Segment Length Information:

Segment	Length	Segment	Length	Segment	Length	Segment	Length
0010	0939						
0020	0816						
0500	0441						
0510	0530						

Primary Route Interchange Exit Number

Secondary Route Interchange Exit Number

PennDOT Type 10 Map View:



Last Date Modified: Nov 7, 2024

County: 45

RMS Interchange Information

Print Form

Interchange Number: 8019

Bureau of Maintenance & Operations
Asset Management Division



Interchange Name: SNYDERSVILLE INT

Intersecting SR's: SR 33 & SR 2012 Hamilton East Rd

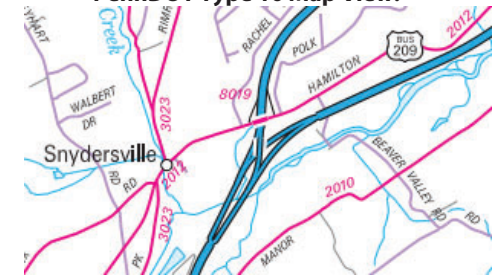
Ramp Segment Number and Ramp Segment Length Information:

Segment	Length	Segment	Length	Segment	Length	Segment	Length
0500	0632						
0750	0438						

Primary Route
Interchange Exit
Number

Secondary Route
Interchange Exit
Number

PennDOT Type 10 Map View:



Last Date Modified:

Jan 23, 2025

County: 45

RMS Interchange Information

Print Form

Interchange Number: 8020

Bureau of Maintenance & Operations
Asset Management Division



Interchange Name: EAST STROUDSBURG INT

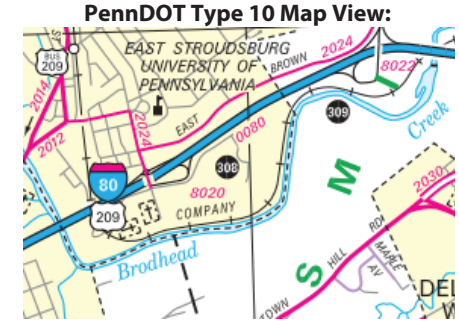
Intersecting SR's: I-80 Keystone Shortway Hw & SR 2017 Prospect St

Ramp Segment Number and Ramp Segment Length Information:

Segment	Length	Segment	Length	Segment	Length	Segment	Length
0250	0959						
0500	0693						
0750	1280						
0760	1393						

Primary Route Interchange Exit Number: 308

Secondary Route Interchange Exit Number



Feedback
200 ft 50 m
© 2023 TomTom, © Vexxel Imaging
© 2023 Microsoft

Last Date Modified: Oct 19, 2023

County: 45

RMS Interchange Information

Print Form

Interchange Number: 8021

Bureau of Maintenance & Operations
Asset Management Division



Interchange Name: MT POCONO INT

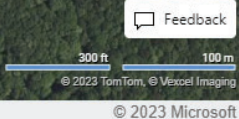
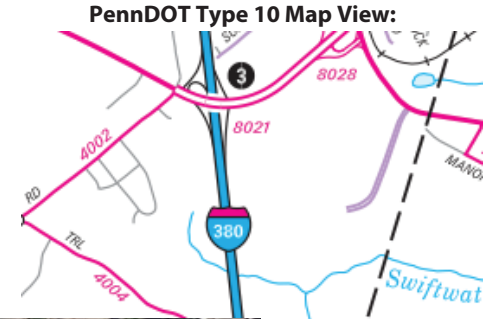
Intersecting SR's: I-380 & PA 940 Ponoco Summit Rd

Ramp Segment Number and Ramp Segment Length Information:

Segment	Length	Segment	Length	Segment	Length	Segment	Length
0010	0866						
0250	0563						
0500	0774						
0510	0698						
0750	0571						

Primary Route Interchange Exit Number: 3

Secondary Route Interchange Exit Number:



Last Date Modified: Oct 19, 2023

County: 45

RMS Interchange Information

Print Form

Interchange Number: 8022

Bureau of Maintenance & Operations
Asset Management Division



Interchange Name: MARSHALLS CRTEEK INT

Intersecting SR's: I-80 Keystone Shortway Hw & US 209 Seven Bridges Rd

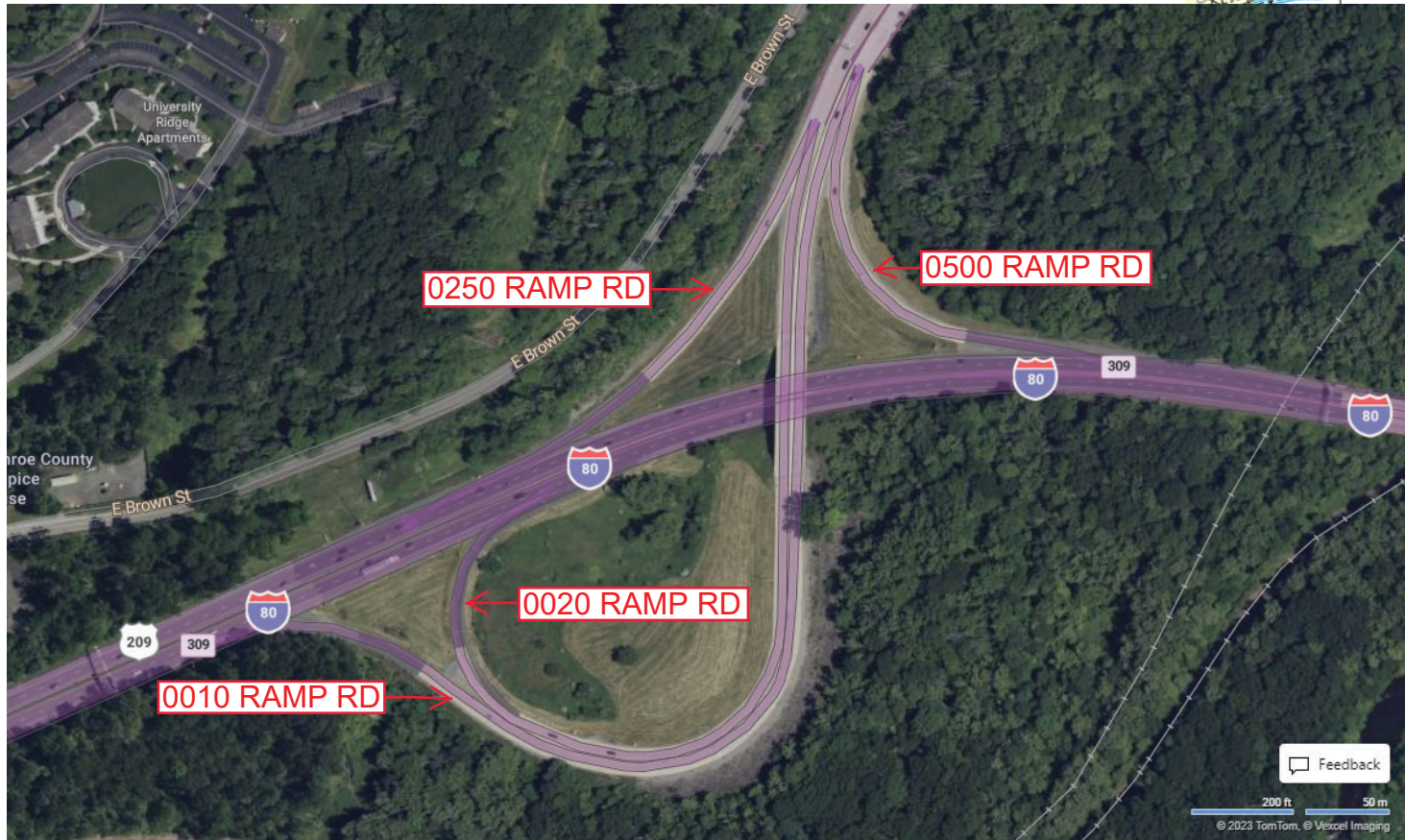
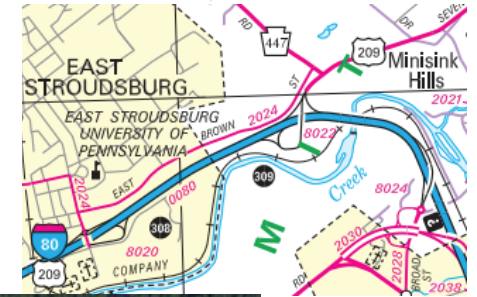
Ramp Segment Number and Ramp Segment Length Information:

Segment	Length	Segment	Length	Segment	Length	Segment	Length
0010	1580						
0020	1428						
0250	0646						
0500	0559						

Primary Route Interchange Exit Number: 309

Secondary Route Interchange Exit Number

PennDOT Type 10 Map View:



Feedback
200 ft 50 m
© 2023 TomTom, © Vexcel Imaging
© 2023 Microsoft

Last Date Modified:

Oct 25, 2023

County: 45

RMS Interchange Information

Print Form

Interchange Number: 8023

Bureau of Maintenance & Operations
Asset Management Division



Interchange Name: TOBYHANNA INT

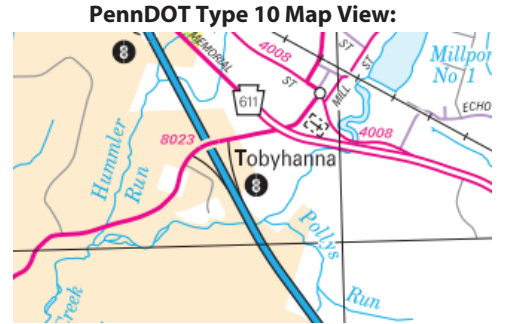
Intersecting SR's: I-380 & PA 423 Prospect St/Warnertown Rd

Ramp Segment Number and Ramp Segment Length Information:

Segment	Length	Segment	Length	Segment	Length	Segment	Length
0010	1075						
0250	0866						

Primary Route Interchange Exit Number: 8

Secondary Route Interchange Exit Number:



Feedback
300 ft 100 m
© 2023 TomTom, © Vexcel Imaging
© 2023 Microsoft

Last Date Modified: Nov 7, 2024

County: 45

RMS Interchange Information

Print Form

Interchange Number: 8024

Bureau of Maintenance & Operations
Asset Management Division



Interchange Name: DELAWARE WATER GAP INT

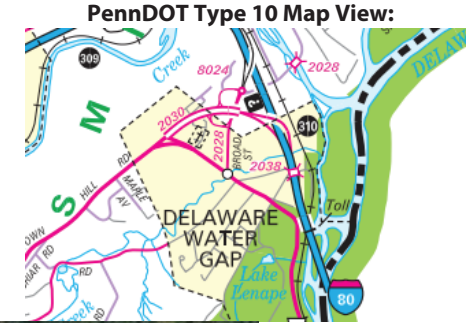
Intersecting SR's: I-80, SR 2028 Broad St & SR 2030 Foxtown Hill Rd

Ramp Segment Number and Ramp Segment Length Information:

Segment	Length	Segment	Length	Segment	Length	Segment	Length
0010	0941	0760	0843				
0020	1107						
0030	1068						
0250	2153						
0750	0813						

Primary Route Interchange Exit Number: 310

Secondary Route Interchange Exit Number



Last Date Modified:

Oct 26, 2023

County: 45

RMS Interchange Information

Print Form

Interchange Number: 8025

Bureau of Maintenance & Operations
Asset Management Division



Interchange Name: TOBYHANNA INT

Intersecting SR's: I-380, PA 611 Belmont Av & SR 4013 Hap Arnold BI

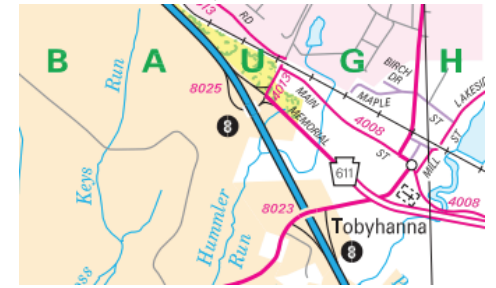
Ramp Segment Number and Ramp Segment Length Information:

Segment	Length	Segment	Length	Segment	Length	Segment	Length
0500	2110						
0750	1166						

Primary Route Interchange Exit Number: 8

Secondary Route Interchange Exit Number

PennDOT Type 10 Map View:



Last Date Modified:

Nov 2, 2023

County: 45

RMS Interchange Information

Print Form

Interchange Number: 8027

Bureau of Maintenance & Operations
Asset Management Division



Interchange Name: GOULDSBORO INT

Intersecting SR's: I-380, PA 435, PA 507 & SR 4015

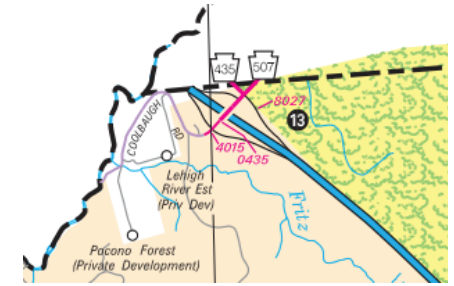
Ramp Segment Number and Ramp Segment Length Information:

Segment	Length	Segment	Length	Segment	Length	Segment	Length
0010	1211						
0250	1128						
0500	1008						
0750	1126						

Primary Route Interchange Exit Number: 13

Secondary Route Interchange Exit Number

PennDOT Type 10 Map View:



Last Date Modified:

Nov 2, 2023

County: 45

RMS Interchange Information

Print Form

Interchange Number: 8028

Bureau of Maintenance & Operations
Asset Management Division



Interchange Name: POCONO SUMMIT/MANOR INT

Intersecting SR's: PA 314, PA 940 & SR 4009

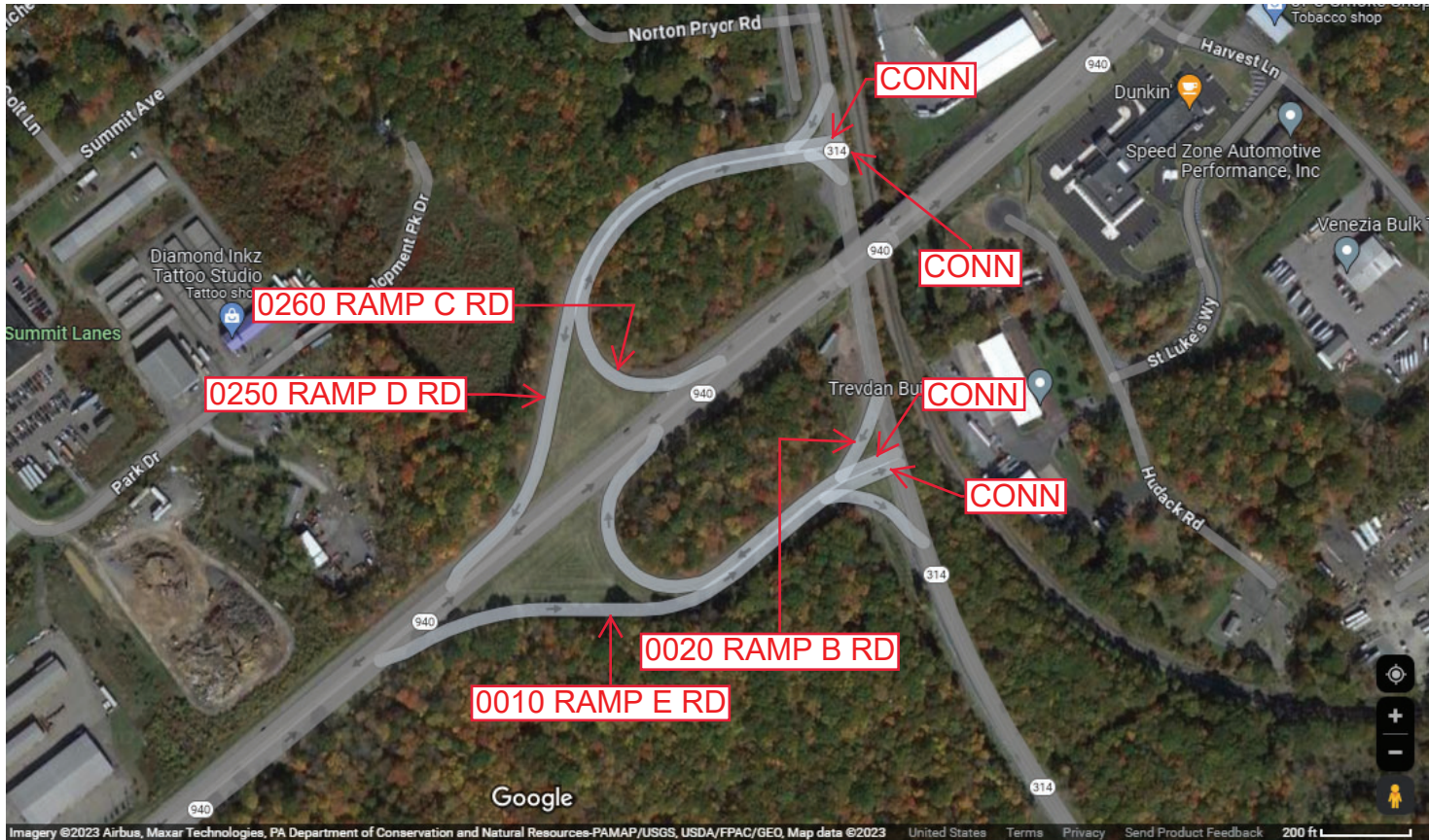
Ramp Segment Number and Ramp Segment Length Information:

Segment	Length	Segment	Length	Segment	Length	Segment	Length
0010	1124						
0020	0925						
0250	1229						
0260	1020						

Primary Route
Interchange Exit
Number

Secondary Route
Interchange Exit
Number

PennDOT Type 10 Map View:



Last Date Modified:

Nov 2, 2023

County: 45

RMS Interchange Information

Print Form

Interchange Number: 9101

Bureau of Maintenance & Operations
Asset Management Division



Interchange Name: WYE RD

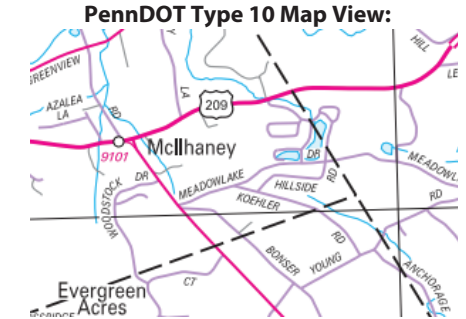
Intersecting SR's: US 209 & SR 3017 Hamilton South St

Ramp Segment Number and Ramp Segment Length Information:

Segment	Length	Segment	Length	Segment	Length	Segment	Length
0010	0225						

Primary Route Interchange Exit Number

Secondary Route Interchange Exit Number



Last Date Modified: Nov 6, 2023

County: 45

RMS Interchange Information

Bureau of Maintenance & Operations
Asset Management Division

Print Form



Interchange Number: 9201

Interchange Name: I-80 EB POCONO REST AREA

Intersecting SR's: I-80 Rest Area

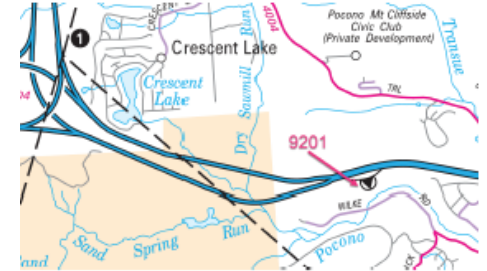
Ramp Segment Number and Ramp Segment Length Information:

Segment	Length	Segment	Length	Segment	Length	Segment	Length
0010	1427						
0020	0973						

Primary Route Interchange Exit Number

Secondary Route Interchange Exit Number

PennDOT Type 10 Map View:



Last Date Modified:

Nov 6, 2023

County: 45

RMS Interchange Information

Print Form

Interchange Number: 9400

Bureau of Maintenance & Operations
Asset Management Division



Interchange Name: JUGHANDLE-CLOSED

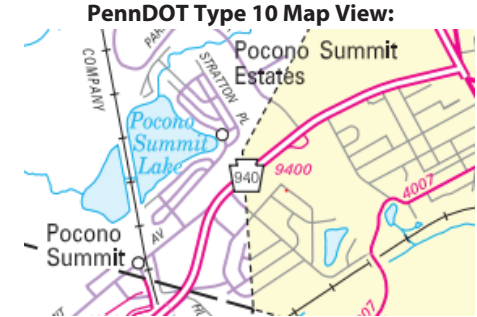
Intersecting SR's: SR 0940 & Pocono Mt & Mall Entrance

Ramp Segment Number and Ramp Segment Length Information:

Segment	Length	Segment	Length	Segment	Length	Segment	Length
0010	0848						

Primary Route Interchange Exit Number

Secondary Route Interchange Exit Number



County: 45

RMS Interchange Information

Print Form

Interchange Number: 9401

Bureau of Maintenance & Operations
Asset Management Division



Interchange Name: MARSHALLS CREEK PARK-N-RIDE

Intersecting SR's: T-530 Oak Grove Dr

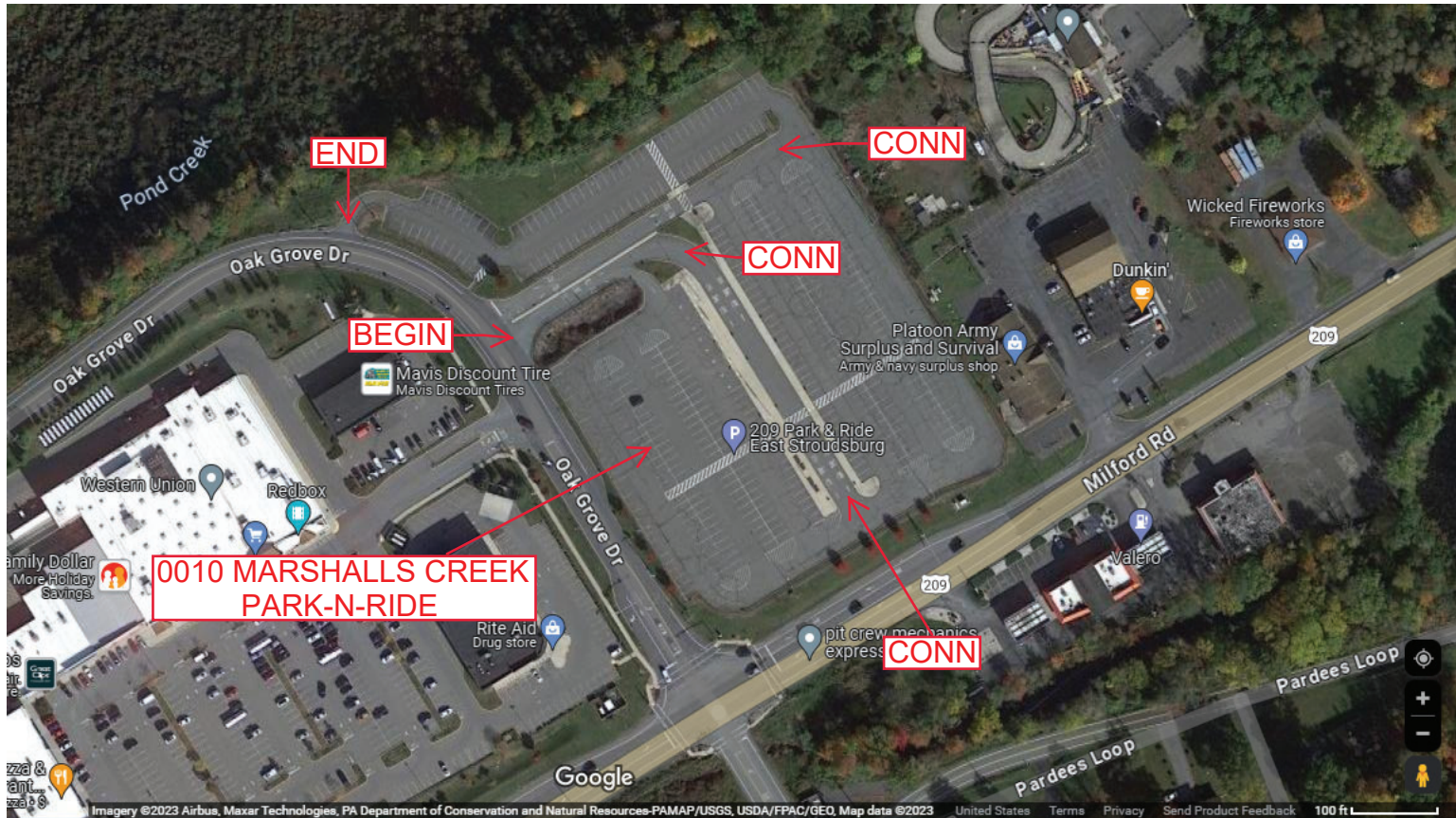
Ramp Segment Number and Ramp Segment Length Information:

Segment	Length	Segment	Length	Segment	Length	Segment	Length
0010	2100						

Primary Route Interchange Exit Number

Secondary Route Interchange Exit Number

PennDOT Type 10 Map View:



Last Date Modified:

Nov 20, 2023