

County: 48

# RMS Interchange Information

Print Form

Interchange Number: 8001

Bureau of Maintenance & Operations  
Asset Management Division



Interchange Name: STROUDSBURG INT

Intersecting SR's: US 22 & PA 33

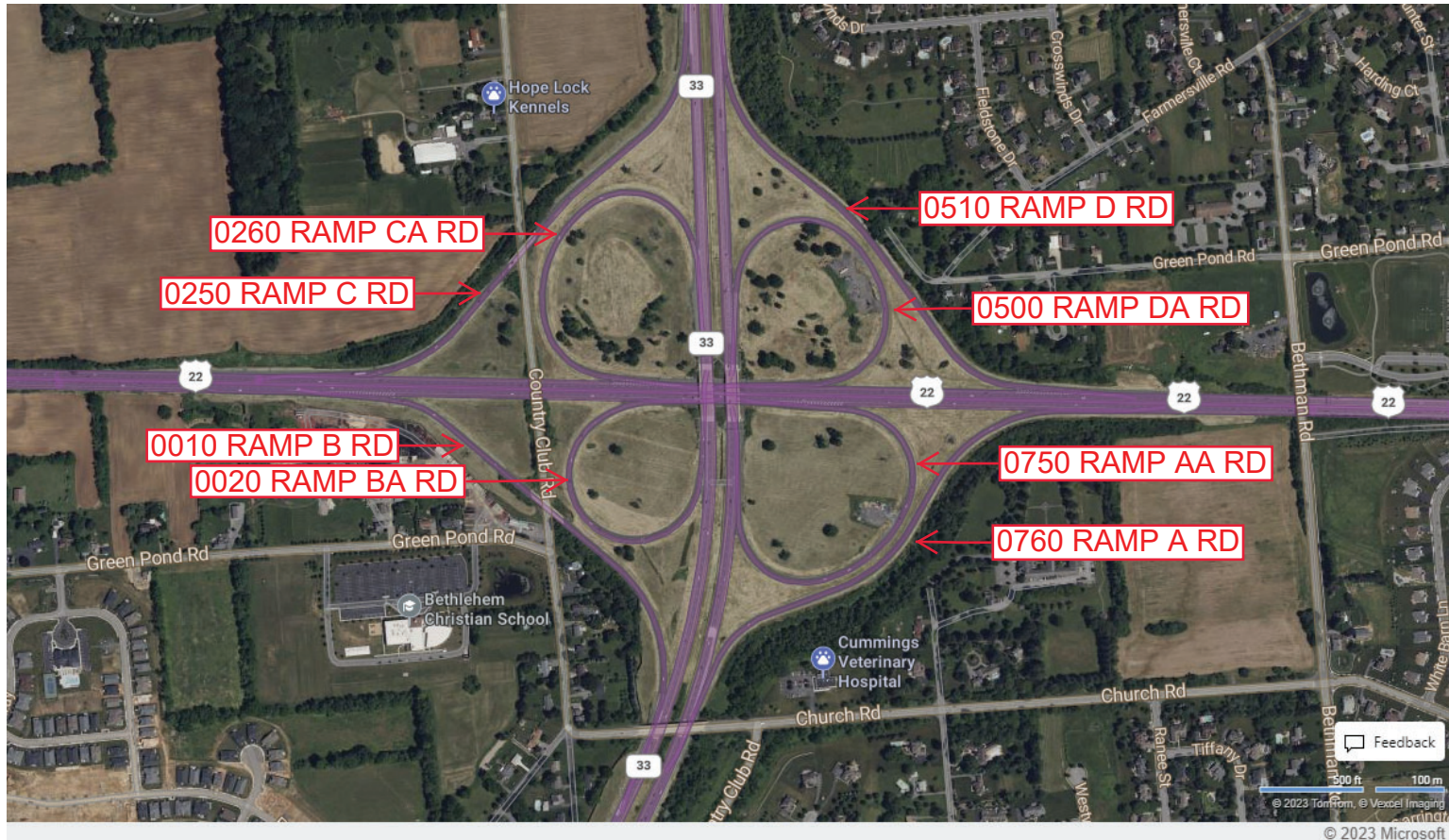
Ramp Segment Number and Ramp Segment Length Information:

Segment	Length	Segment	Length	Segment	Length	Segment	Length
0010	2005	0510	2090				
0020	1437	0750	1802				
0250	2242	0760	2088				
0260	1705						
0500	1717						

Primary Route  
Interchange Exit  
Number

Secondary Route  
Interchange Exit  
Number

PennDOT Type 10 Map View:



Last Date Modified:

Nov 21, 2023

County: 48

# RMS Interchange Information

Print Form

Interchange Number: 8002

Bureau of Maintenance & Operations  
Asset Management Division



Interchange Name: SCHONERSVILLE RD INT

Intersecting SR's: US 22, SR 1009 Schonersville Rd, (Co39) & SR 9402

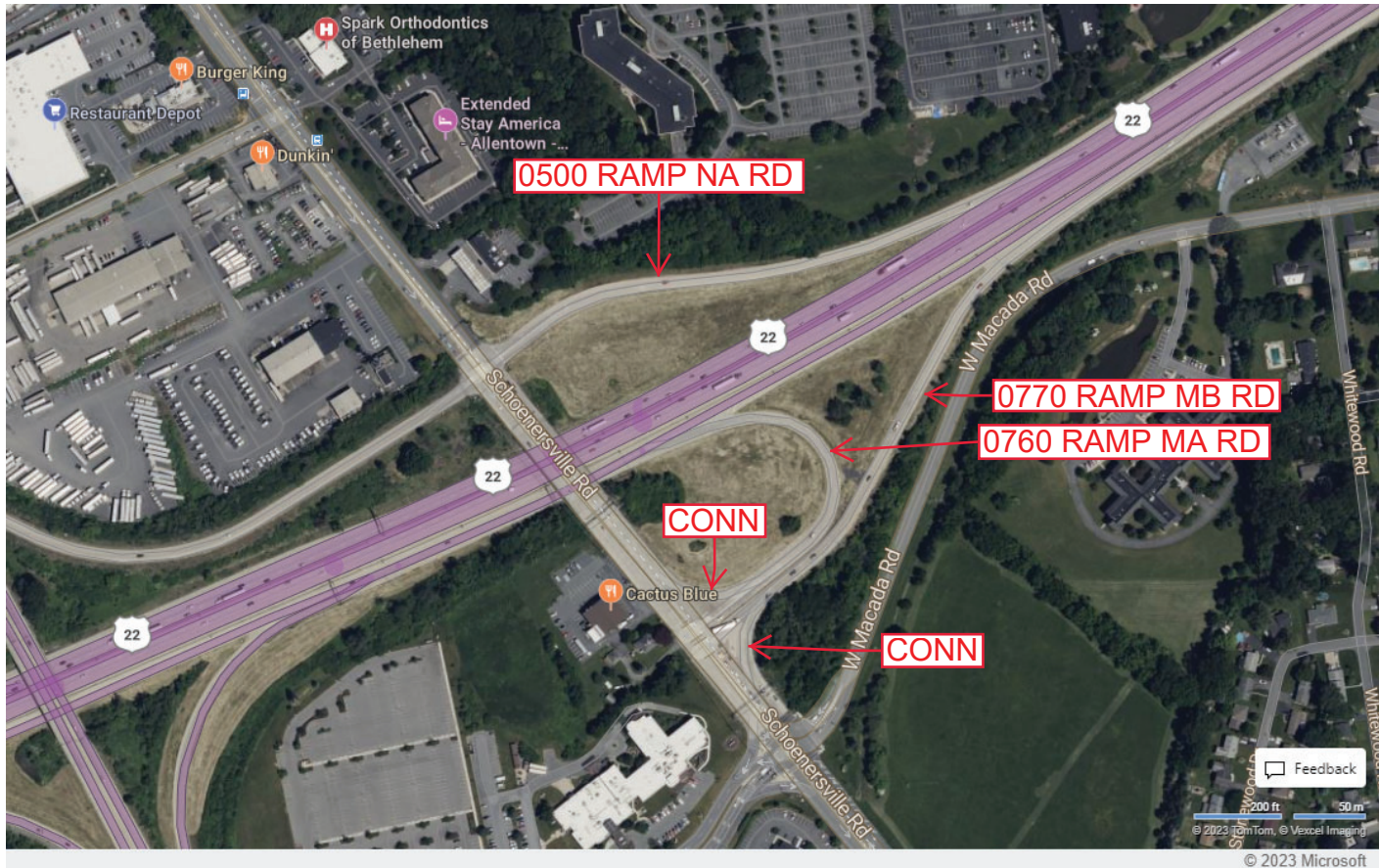
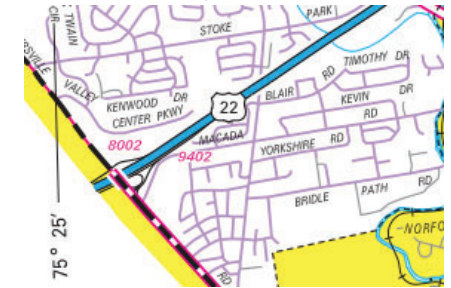
Ramp Segment Number and Ramp Segment Length Information:

Segment	Length	Segment	Length	Segment	Length	Segment	Length
0500	1121						
0760	0802						
0770	1066						

Primary Route  
Interchange Exit  
Number

Secondary Route  
Interchange Exit  
Number

PennDOT Type 10 Map View:



© 2023 TomTom, © Vexcel Imaging  
© 2023 Microsoft

Last Date Modified:

Nov 22, 2023

County: 48

# RMS Interchange Information

Print Form

Interchange Number: 8003

Bureau of Maintenance & Operations  
Asset Management Division



Interchange Name: HECKTOWN RD INT

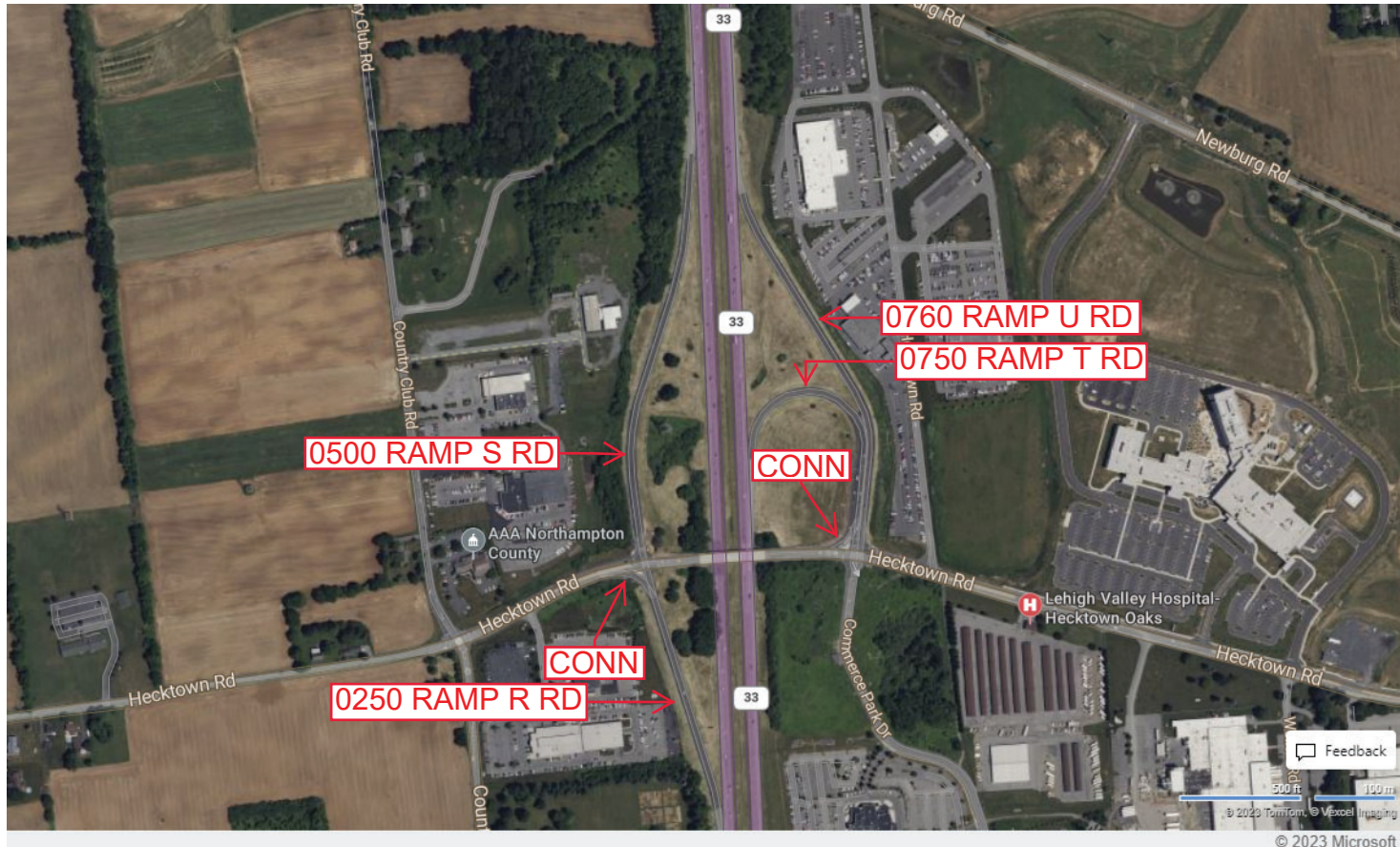
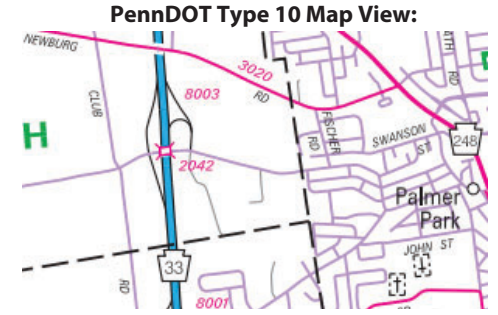
Intersecting SR's: PA 33 & T437 Hecktown Rd

Ramp Segment Number and Ramp Segment Length Information:

Segment	Length	Segment	Length	Segment	Length	Segment	Length
0250	1075						
0500	1725						
0750	1136						
0760	1651						

Primary Route Interchange Exit Number

Secondary Route Interchange Exit Number



Last Date Modified:

Nov 22, 2023

County: 48

# RMS Interchange Information

Bureau of Maintenance & Operations  
Asset Management Division

Print Form



Interchange Number: 8004

Interchange Name: PA 512 & CENTER ST

Intersecting SR's: US 22 & PA 512 Bath Pk

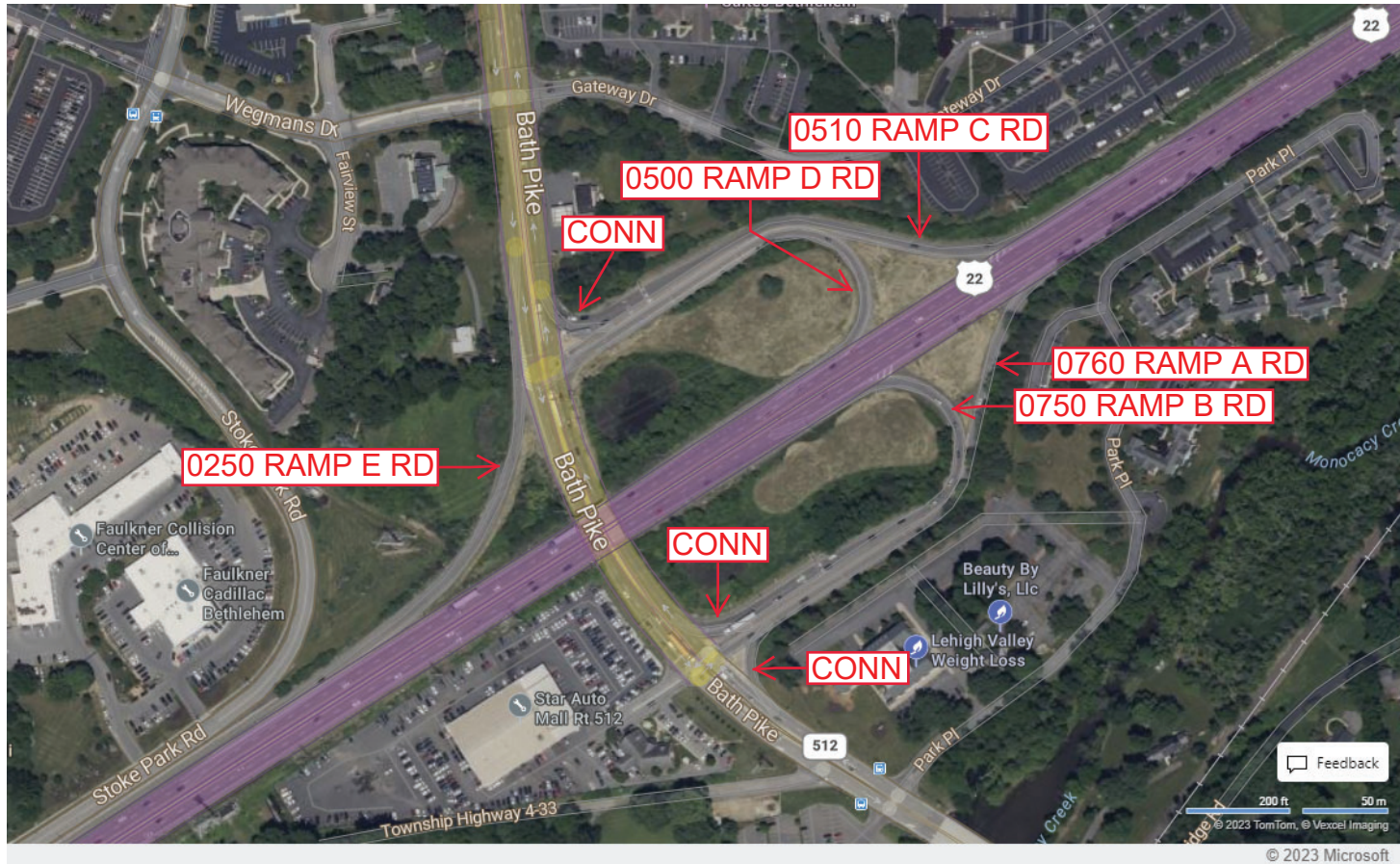
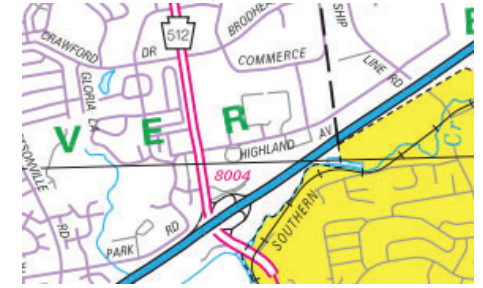
Ramp Segment Number and Ramp Segment Length Information:

Segment	Length	Segment	Length	Segment	Length	Segment	Length
0250	0467						
0500	0821						
0510	0910						
0750	0858						
0760	0973						

Primary Route  
Interchange Exit  
Number

Secondary Route  
Interchange Exit  
Number

PennDOT Type 10 Map View:



Last Date Modified:

Sep 25, 2024

County: 48

# RMS Interchange Information

Print Form

Interchange Number: 8005

Bureau of Maintenance & Operations  
Asset Management Division



Interchange Name: NAZARETH/WILSON INT

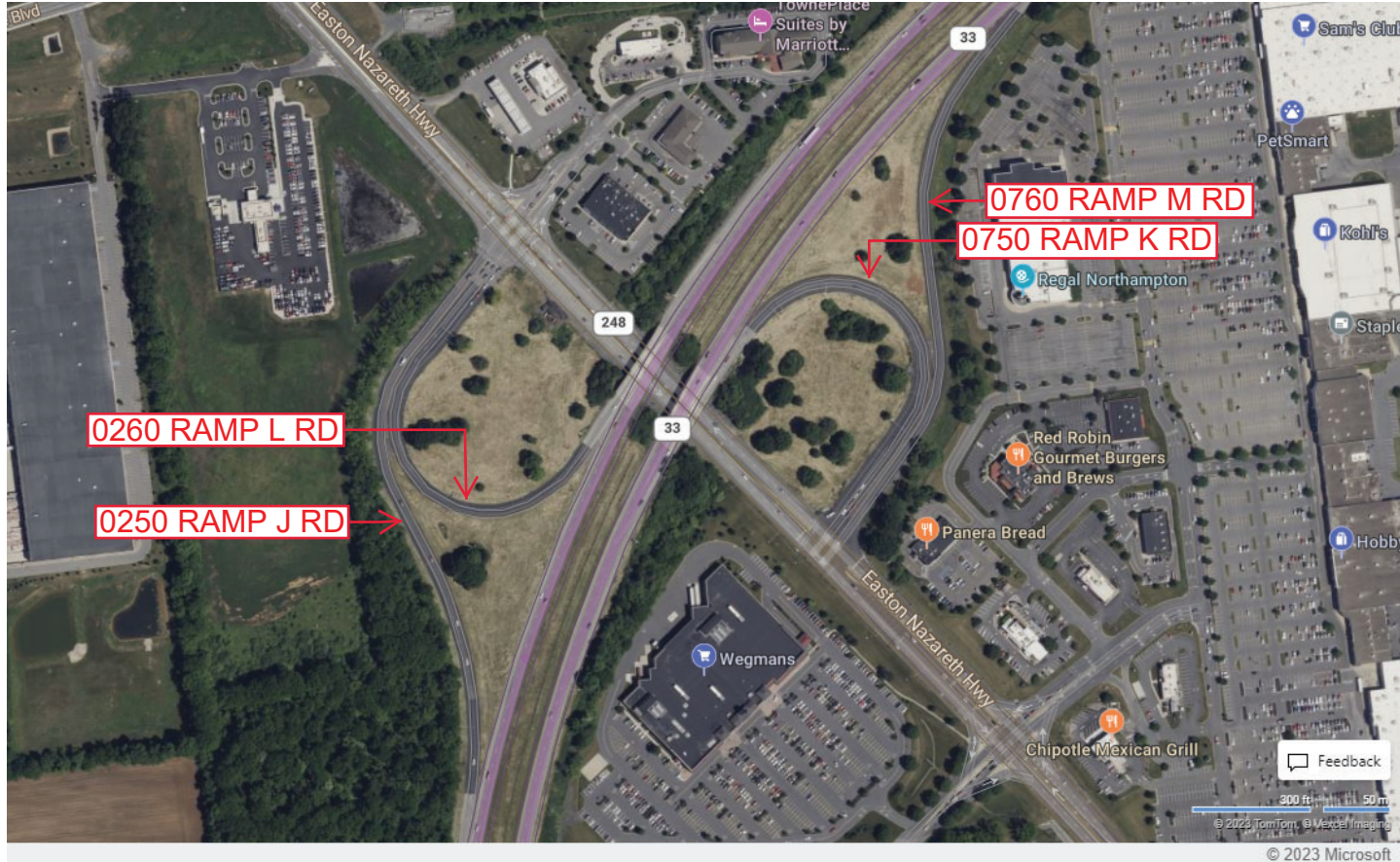
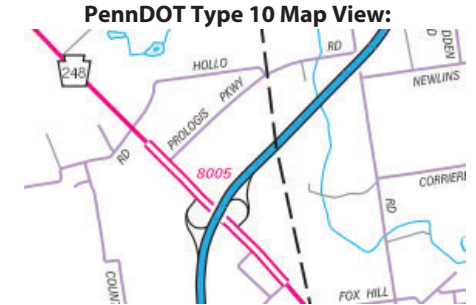
Intersecting SR's: PA 33 & PA 248 Northampton St

Ramp Segment Number and Ramp Segment Length Information:

Segment	Length	Segment	Length	Segment	Length	Segment	Length
0250	1542						
0260	1219						
0750	1119						
0760	1530						

Primary Route Interchange Exit Number

Secondary Route Interchange Exit Number



County: 48

# RMS Interchange Information

Print Form

Interchange Number: 8006

Bureau of Maintenance & Operations  
Asset Management Division



Interchange Name: PA 191/NAZARETH PK

Intersecting SR's: US 22 & PA 191 Nazareth Pk

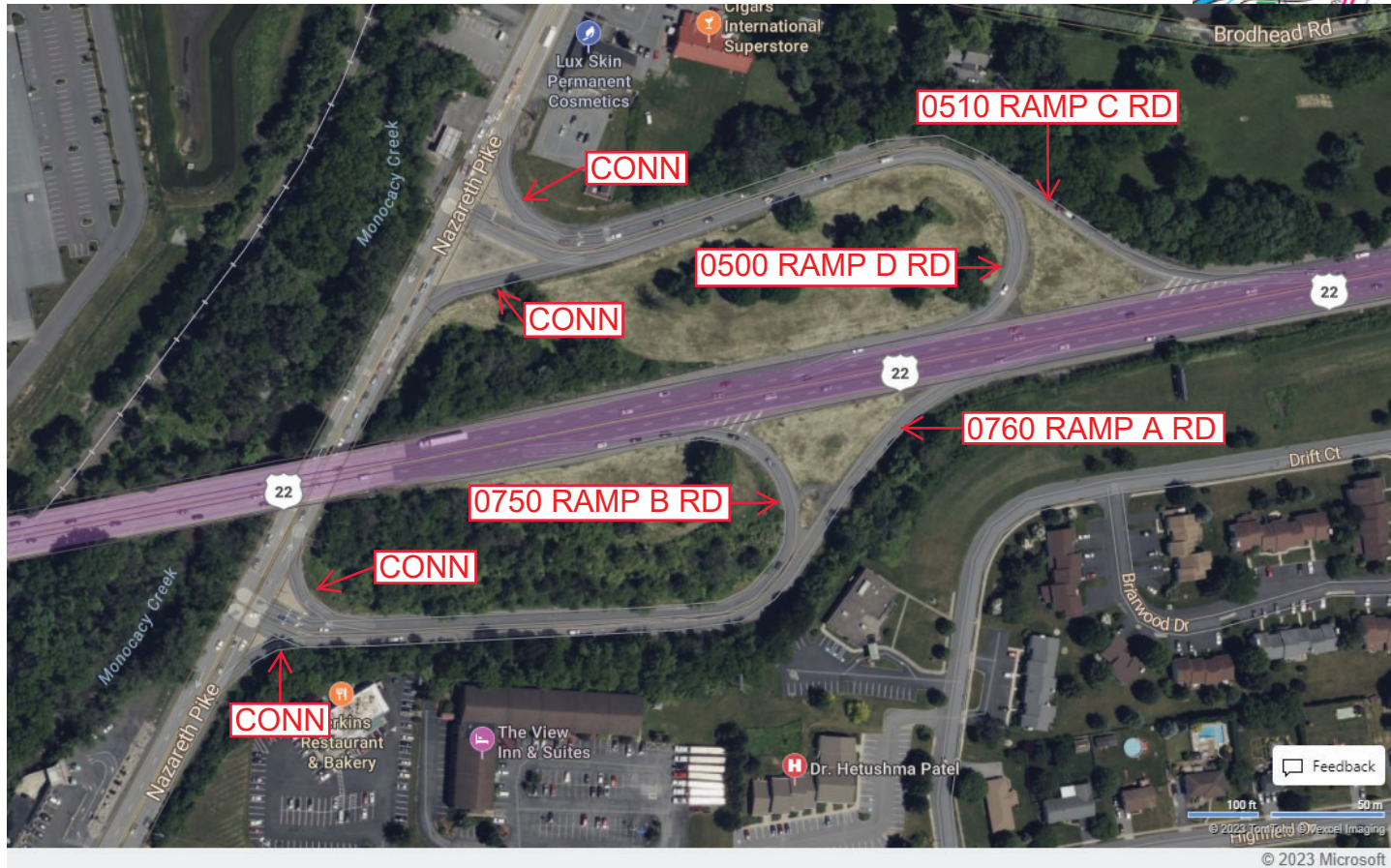
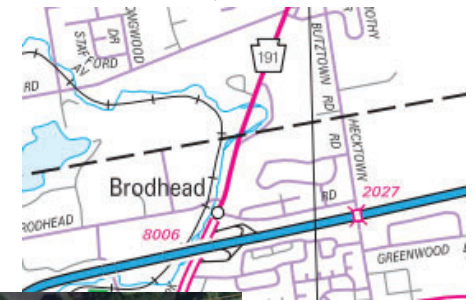
Ramp Segment Number and Ramp Segment Length Information:

Segment	Length	Segment	Length	Segment	Length	Segment	Length
0500	1039						
0510	1093						
0750	0983						
0760	1143						

Primary Route  
Interchange Exit  
Number

Secondary Route  
Interchange Exit  
Number

PennDOT Type 10 Map View:



Last Date Modified:

Nov 28, 2023

County: 48

# RMS Interchange Information

Print Form

Interchange Number: 8007

Bureau of Maintenance & Operations  
Asset Management Division



Interchange Name: STOCKERTOWN & BANGOR INT

Intersecting SR's: PA 33 & PA 191 Industrial BI

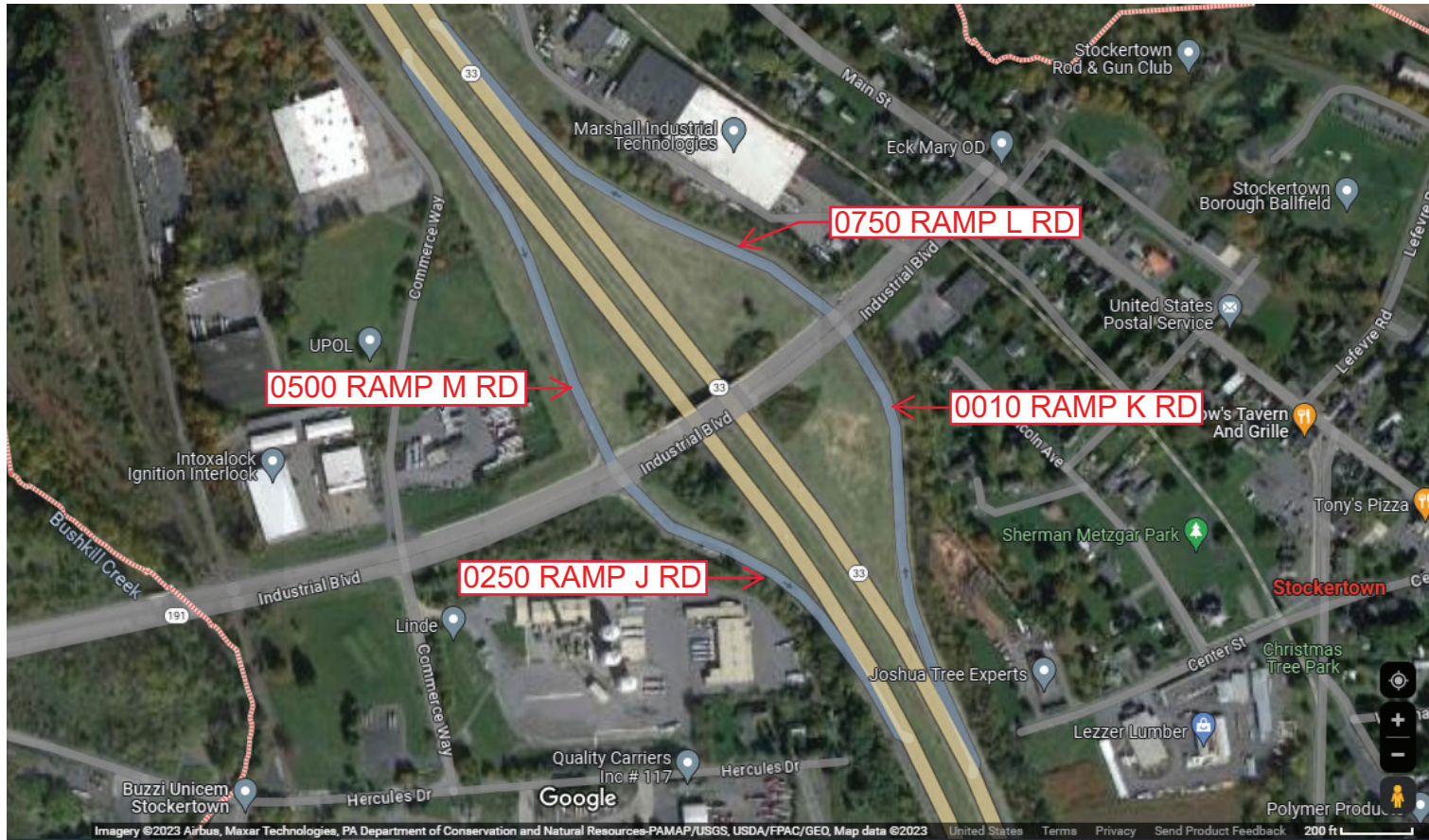
Ramp Segment Number and Ramp Segment Length Information:

Segment	Length	Segment	Length	Segment	Length	Segment	Length
0010	0949						
0250	0718						
0500	0874						
0750	1006						

Primary Route Interchange Exit Number

Secondary Route Interchange Exit Number

PennDOT Type 10 Map View:



Last Date Modified:

Nov 28, 2023

County: 48

# RMS Interchange Information

Print Form

Interchange Number: 8008

Bureau of Maintenance & Operations  
Asset Management Division



Interchange Name: WILSON & 25th S TIN T

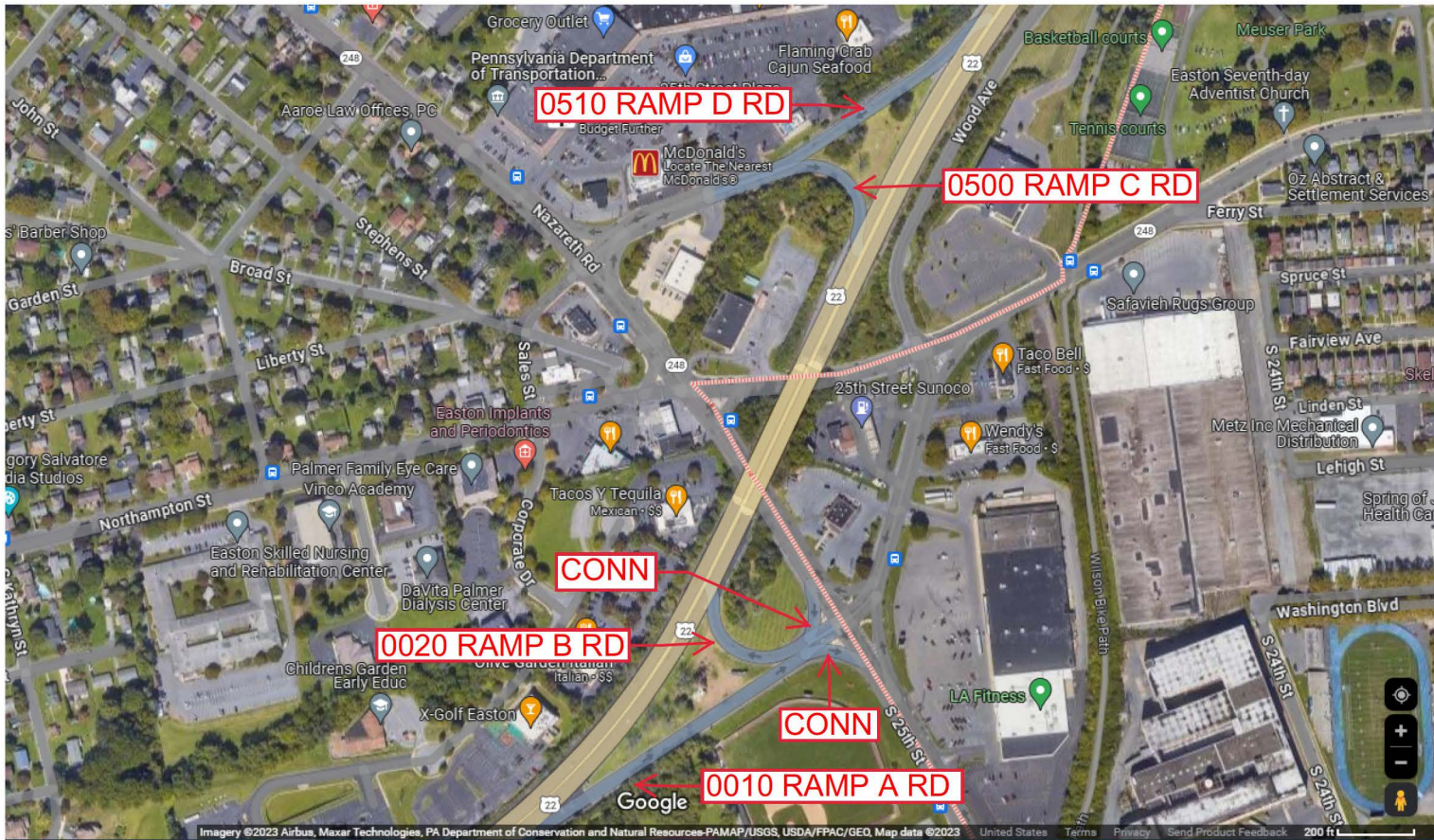
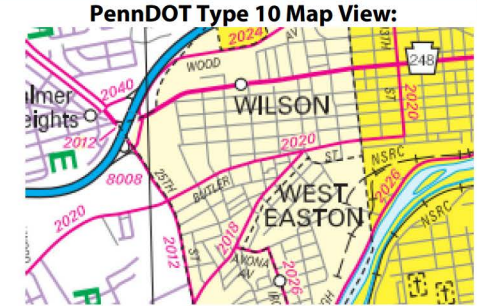
Intersecting SR's: U S 22 SR 2012 Twentieth St & SR 248 Sales St

Ramp Segment Number and Ramp Segment Length Information:

Segment	Length	Segment	Length	Segment	Length	Segment	Length
0010	0771						
0020	0413						
0500	0210						
0510	0428						

Primary Route Interchange Exit Number

Secondary Route Interchange Exit Number



Last Date Modified: Nov 30, 2023



County: 48

# RMS Interchange Information

Print Form

Interchange Number: 8009

Bureau of Maintenance & Operations  
Asset Management Division



Interchange Name: BELFAST INT

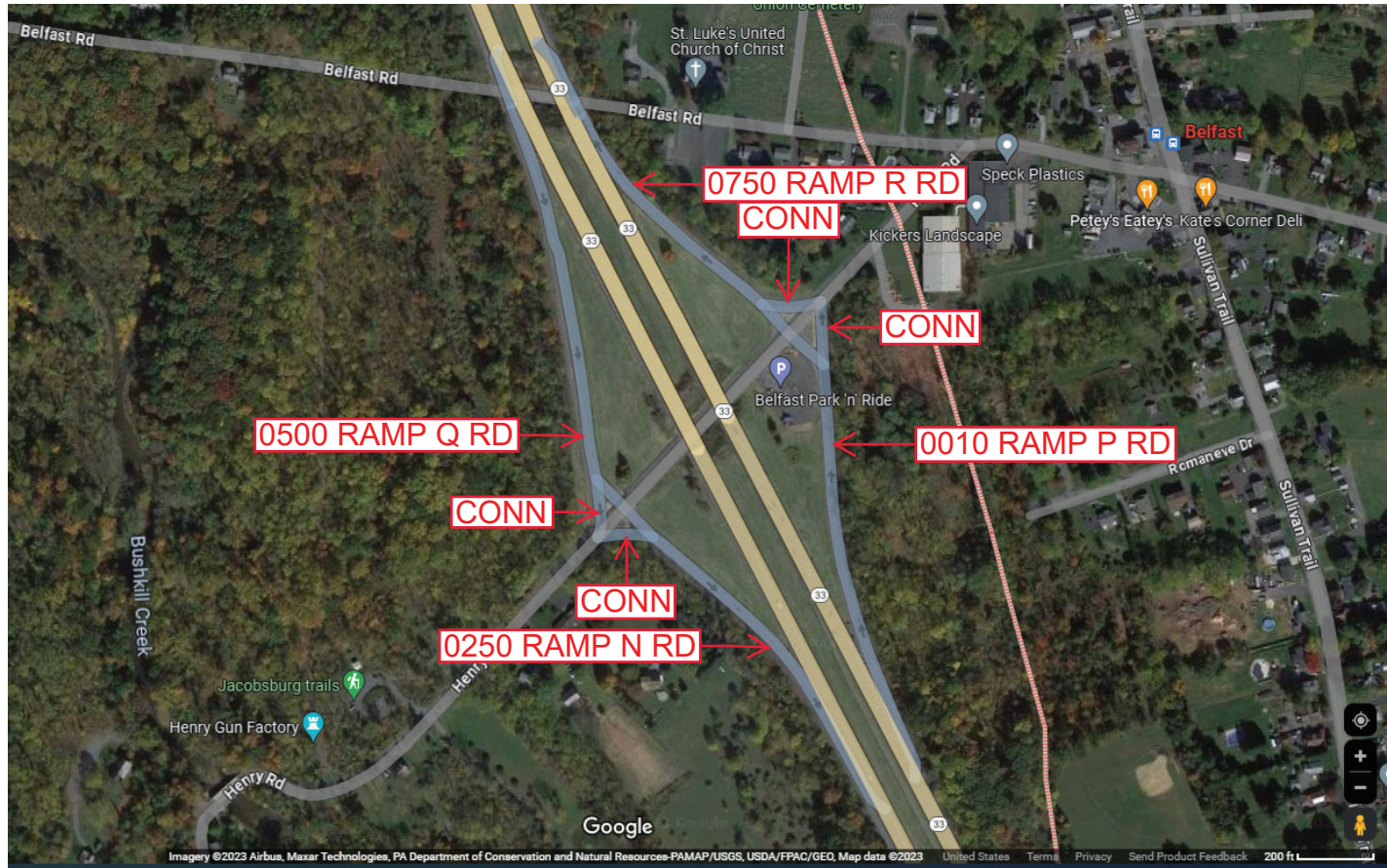
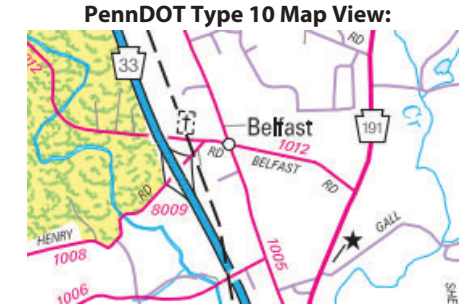
Intersecting SR's: PA 33 & SR 1008 Henry Rd

Ramp Segment Number and Ramp Segment Length Information:

Segment	Length	Segment	Length	Segment	Length	Segment	Length
0010	0894						
0250	0640						
0500	0918						
0750	0660						

Primary Route Interchange Exit Number

Secondary Route Interchange Exit Number



Last Date Modified: Jan 15, 2025

County: 48

# RMS Interchange Information

Print Form

Interchange Number: 8010

Bureau of Maintenance & Operations  
Asset Management Division



Interchange Name: 13TH ST INT

Intersecting SR's: US 22 William Penn Hw & SR 2017 Wood Av

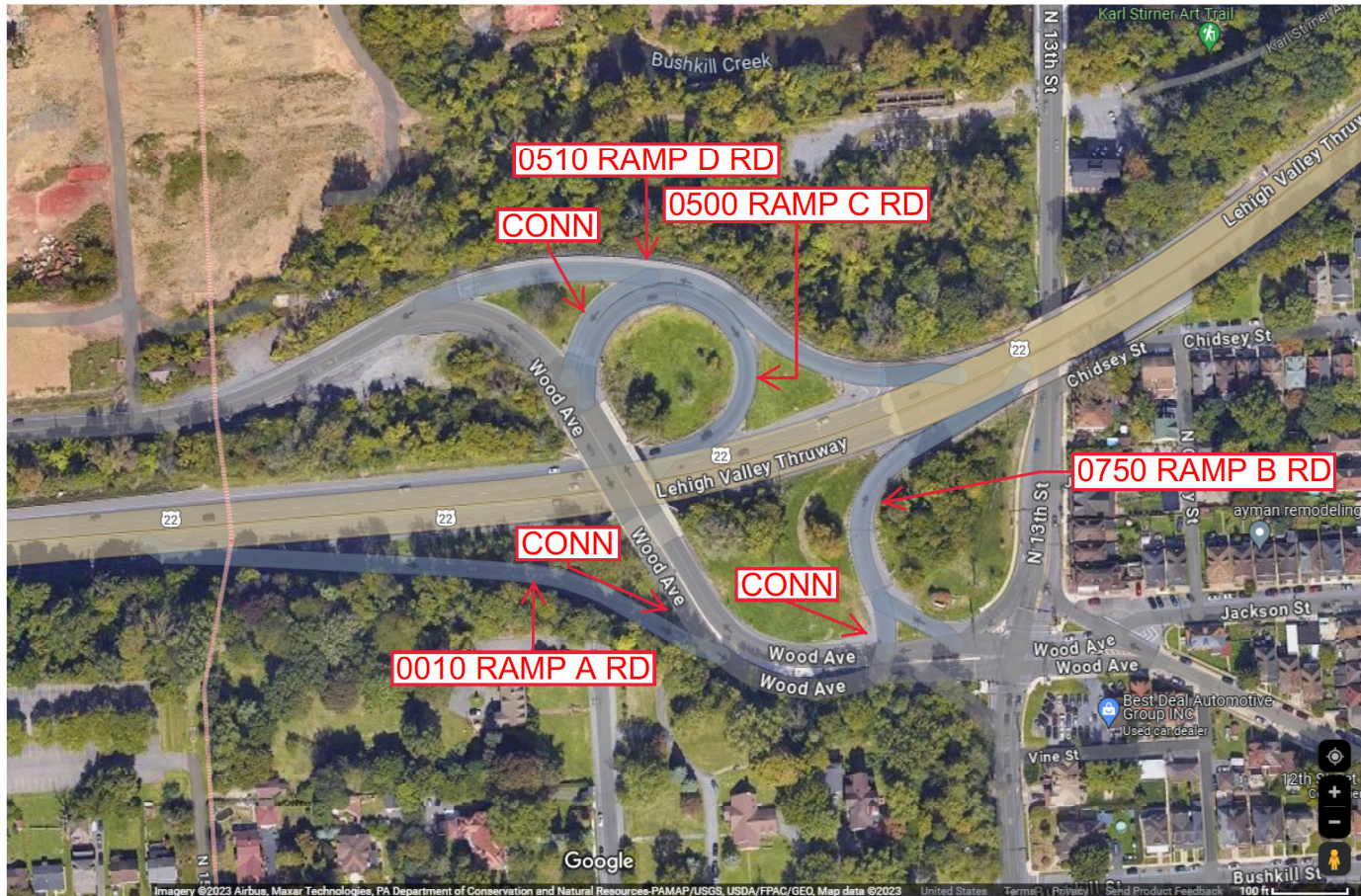
Ramp Segment Number and Ramp Segment Length Information:

Segment	Length	Segment	Length	Segment	Length	Segment	Length
0010	0472						
0500	0410						
0510	0554						
0750	0304						

Primary Route  
Interchange Exit  
Number

Secondary Route  
Interchange Exit  
Number

PennDOT Type 10 Map View:



Last Date Modified:

Dec 1, 2023

County: 48

# RMS Interchange Information

Print Form

Interchange Number: 8011

Bureau of Maintenance & Operations  
Asset Management Division



Interchange Name: BATH & WIND GAP INT

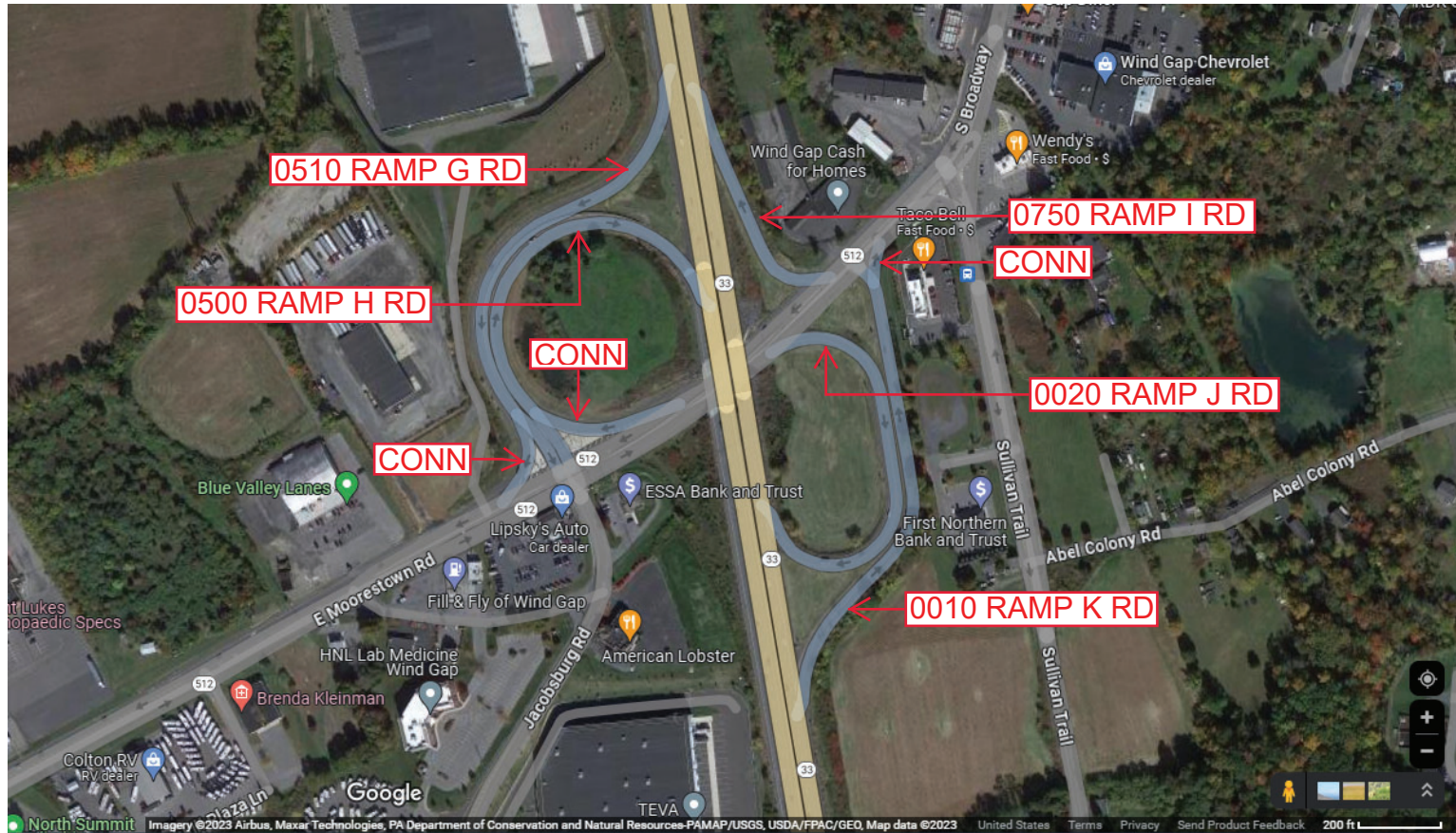
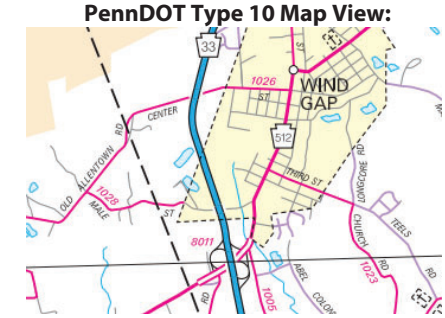
Intersecting SR's: PA 33 & PA 512 Lehigh Av

Ramp Segment Number and Ramp Segment Length Information:

Segment	Length	Segment	Length	Segment	Length	Segment	Length
0010	1086						
0020	0938						
0500	1122						
0510	1140						
0750	0443						

Primary Route Interchange Exit Number

Secondary Route Interchange Exit Number



Last Date Modified: Dec 14, 2023

County: 48

# RMS Interchange Information

Print Form

Interchange Number: 8012

Bureau of Maintenance & Operations  
Asset Management Division



Interchange Name: 4TH ST INT

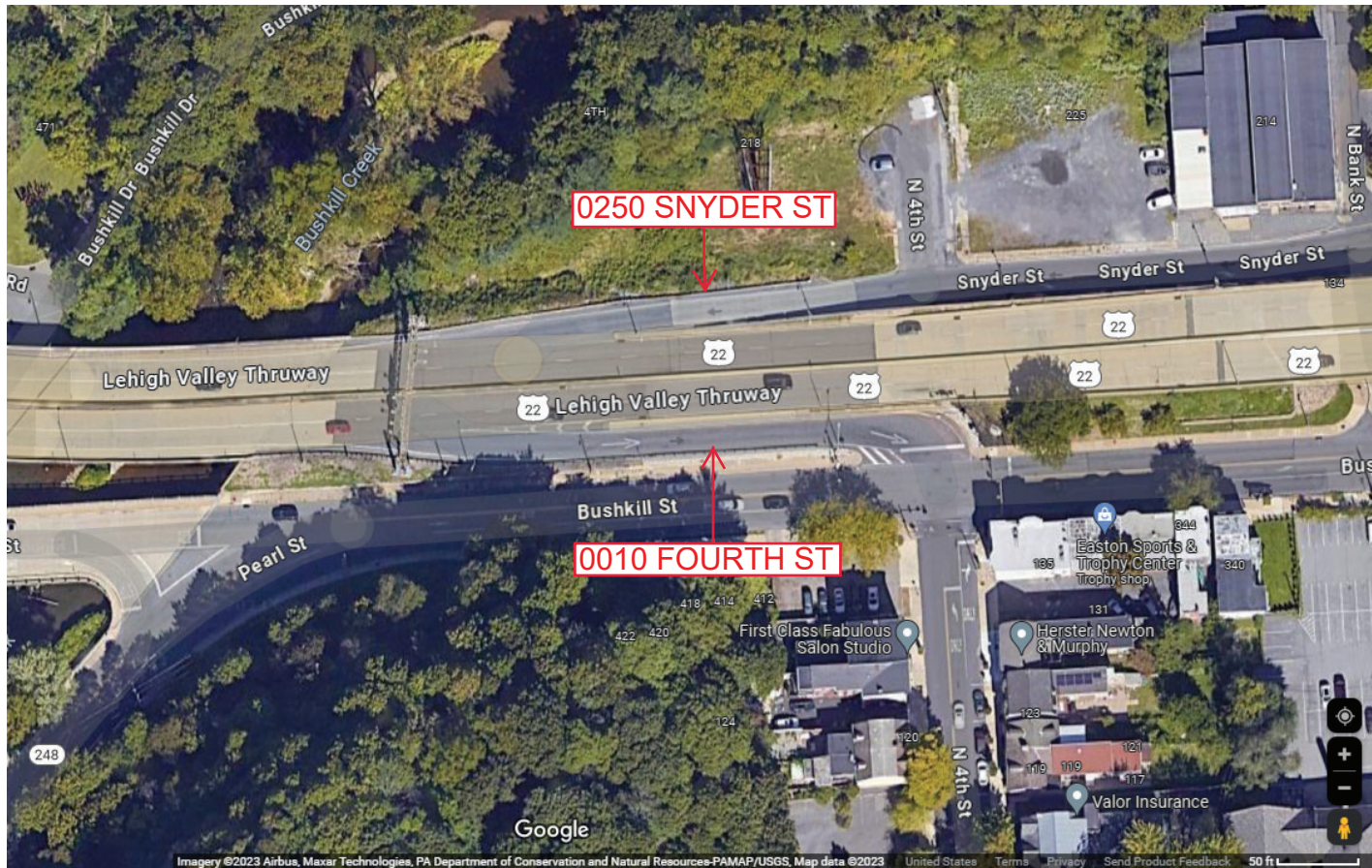
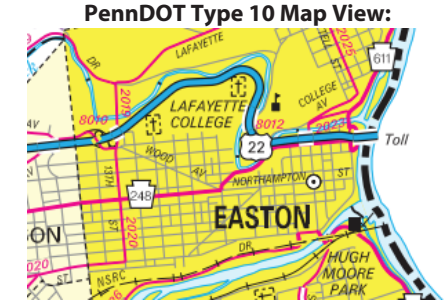
Intersecting SR's: US 22, PA 248 Bushkill St (4th St) & CITY Snyder St

Ramp Segment Number and Ramp Segment Length Information:

Segment	Length	Segment	Length	Segment	Length	Segment	Length
0010	0212						
0250	0152						

Primary Route Interchange Exit Number

Secondary Route Interchange Exit Number



Last Date Modified: Dec 15, 2023

County: 48

# RMS Interchange Information

Print Form

Interchange Number: 8013

Bureau of Maintenance & Operations  
Asset Management Division



Interchange Name: WIND GAP INT

Intersecting SR's: PA 33, SR 1007 Broadway St & SR 3017

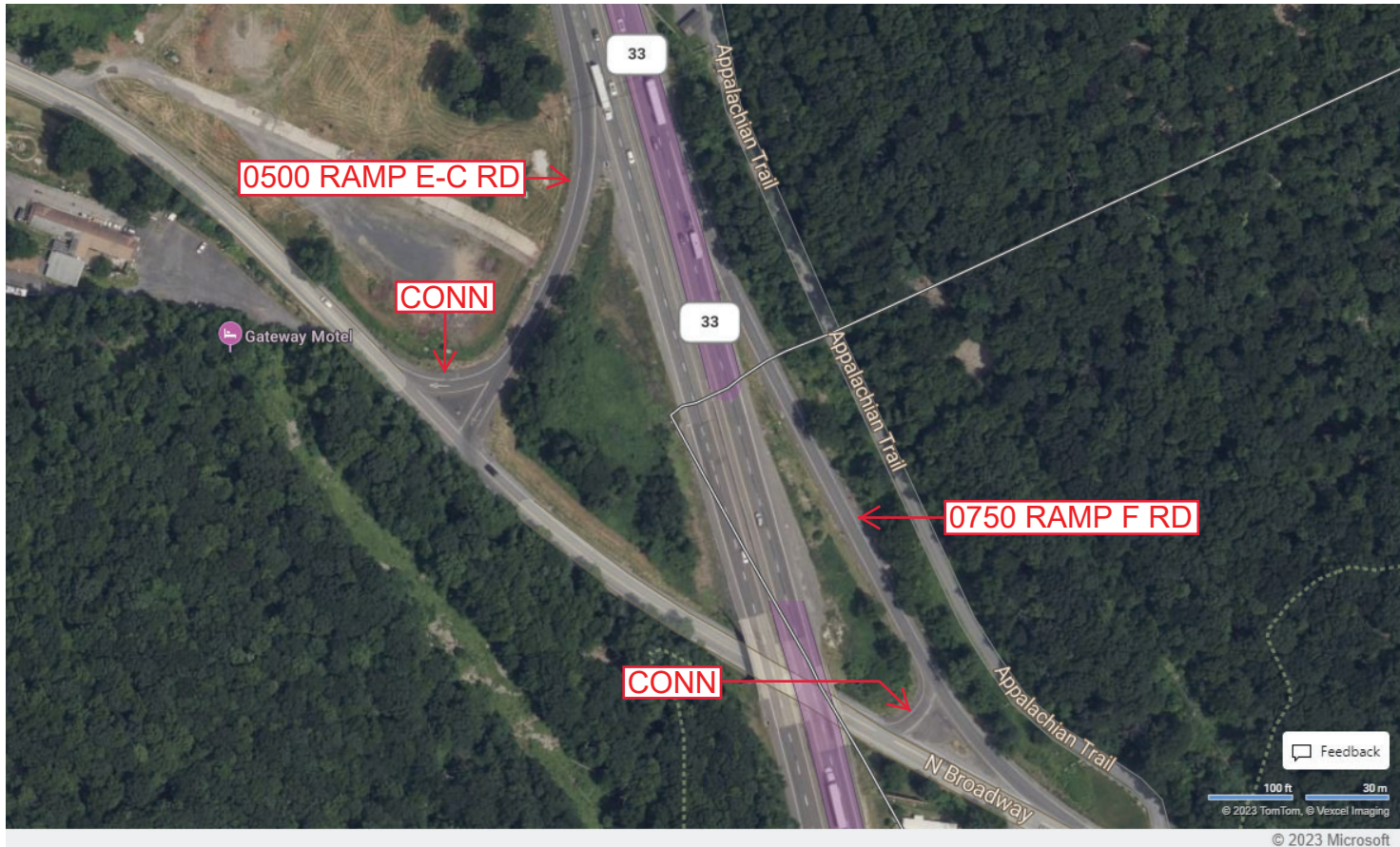
Ramp Segment Number and Ramp Segment Length Information:

Segment	Length	Segment	Length	Segment	Length	Segment	Length
0500	0367						
0750	0695						

Primary Route Interchange Exit Number

Secondary Route Interchange Exit Number

PennDOT Type 10 Map View:



Last Date Modified: Dec 18, 2023

County: 48

# RMS Interchange Information

Print Form

Interchange Number: 8014

Bureau of Maintenance & Operations  
Asset Management Division



Interchange Name: HELLERTOWN/BETHLEHEM INT

Intersecting SR's: I-78 & PA 412 Main St

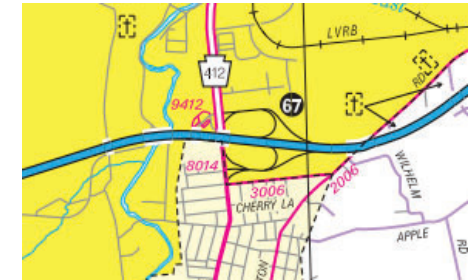
Ramp Segment Number and Ramp Segment Length Information:

Segment	Length	Segment	Length	Segment	Length	Segment	Length
0500	2248						
0510	2567						
0750	1862						
0760	2499						

Primary Route  
Interchange Exit  
Number

Secondary Route  
Interchange Exit  
Number

PennDOT Type 10 Map View:



Last Date Modified:

Dec 20, 2023

County: 48

# RMS Interchange Information

Print Form

Interchange Number: 8015

Bureau of Maintenance & Operations  
Asset Management Division



Interchange Name: 2ND ST INT

Intersecting SR's: SR 3011 New St, CITY Northampton Av & CITY Second St

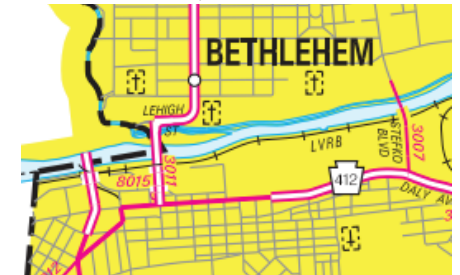
Ramp Segment Number and Ramp Segment Length Information:

Segment	Length	Segment	Length	Segment	Length	Segment	Length
0500	0370						

Primary Route Interchange Exit Number

Secondary Route Interchange Exit Number

PennDOT Type 10 Map View:



© 2023 Microsoft

Last Date Modified:

Dec 20, 2023

County: 48

# RMS Interchange Information

Print Form

Interchange Number: 8016

Bureau of Maintenance & Operations  
Asset Management Division



Interchange Name: EASTON/PHILADELPHIA INT

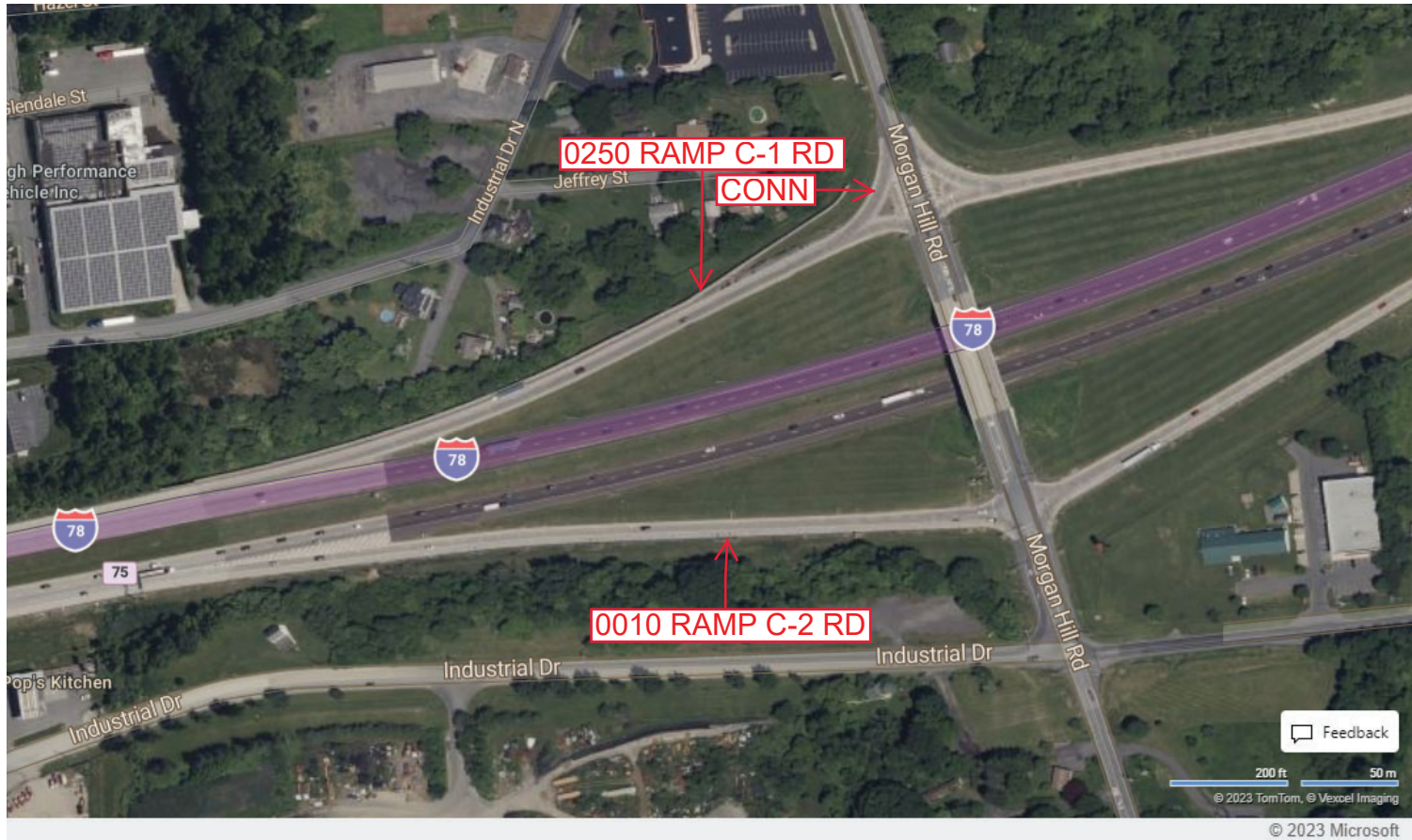
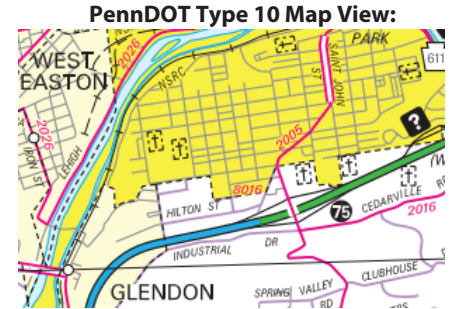
Intersecting SR's: I-78 & SR 2005 Morgan Hill Rd

Ramp Segment Number and Ramp Segment Length Information:

Segment	Length	Segment	Length	Segment	Length	Segment	Length
0010	1066						
0250	1009						

Primary Route Interchange Exit Number: 75

Secondary Route Interchange Exit Number



Last Date Modified: Dec 21, 2023



County: 48

# RMS Interchange Information

Print Form

Interchange Number: 8017

Bureau of Maintenance & Operations  
Asset Management Division



Interchange Name: PORTLAND INT

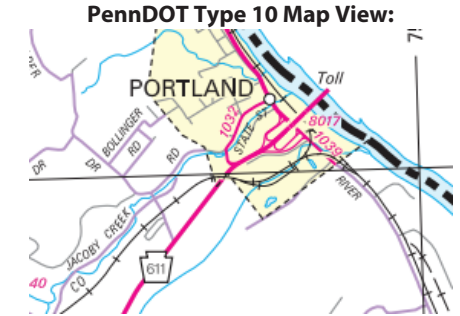
Intersecting SR's: PA 611, SR 1032 State St & SR 1039 River Rd

Ramp Segment Number and Ramp Segment Length Information:

Segment	Length	Segment	Length	Segment	Length	Segment	Length
0010	2094						
0250	1915						

Primary Route Interchange Exit Number

Secondary Route Interchange Exit Number



Last Date Modified: Dec 21, 2023

County: 48

# RMS Interchange Information

Print Form

Interchange Number: 8018

Bureau of Maintenance & Operations  
Asset Management Division



Interchange Name: I-78 & PA 33

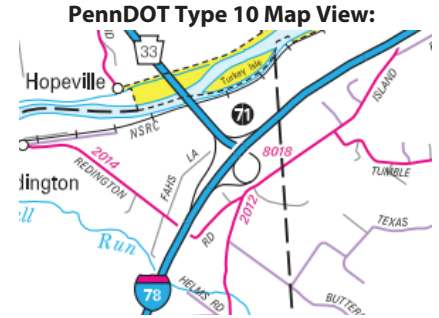
Intersecting SR's: I-78 & PA 33

Ramp Segment Number and Ramp Segment Length Information:

Segment	Length	Segment	Length	Segment	Length	Segment	Length
0010	3190						
0020	3143						
0250	2265						
0500	1170						

Primary Route Interchange Exit Number: 71

Secondary Route Interchange Exit Number



Last Date Modified: Oct 31, 2024

County: 48

# RMS Interchange Information

Print Form

Bureau of Maintenance & Operations  
Asset Management Division



Interchange Number: 8019

Interchange Name: FREEMANSBURG AV INT

Intersecting SR's: PA 33 & SR 2018 Freemansburg Av

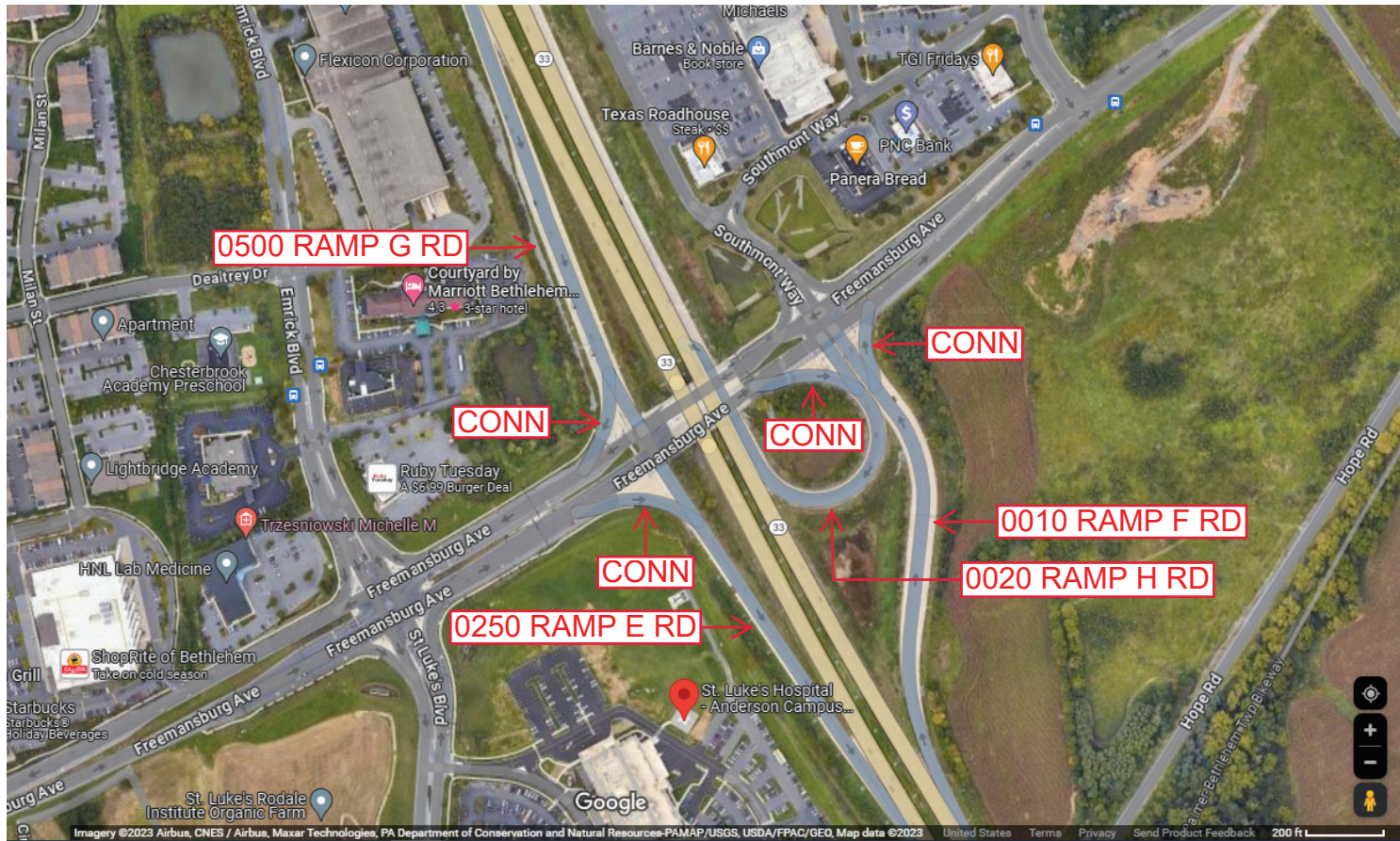
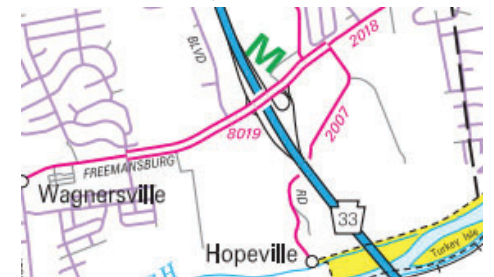
Ramp Segment Number and Ramp Segment Length Information:

Segment	Length	Segment	Length	Segment	Length	Segment	Length
0010	1210						
0020	0666						
0250	0883						
0500	1051						

Primary Route Interchange Exit Number

Secondary Route Interchange Exit Number

PennDOT Type 10 Map View:



Last Date Modified: Jan 23, 2025

County: 48

# RMS Interchange Information

Print Form

Interchange Number: 8021

Bureau of Maintenance & Operations  
Asset Management Division



Interchange Name: WILLIAM PENN HIGHWAY INT

Intersecting SR's: PA 33 & SR 2020 William Penn Hw

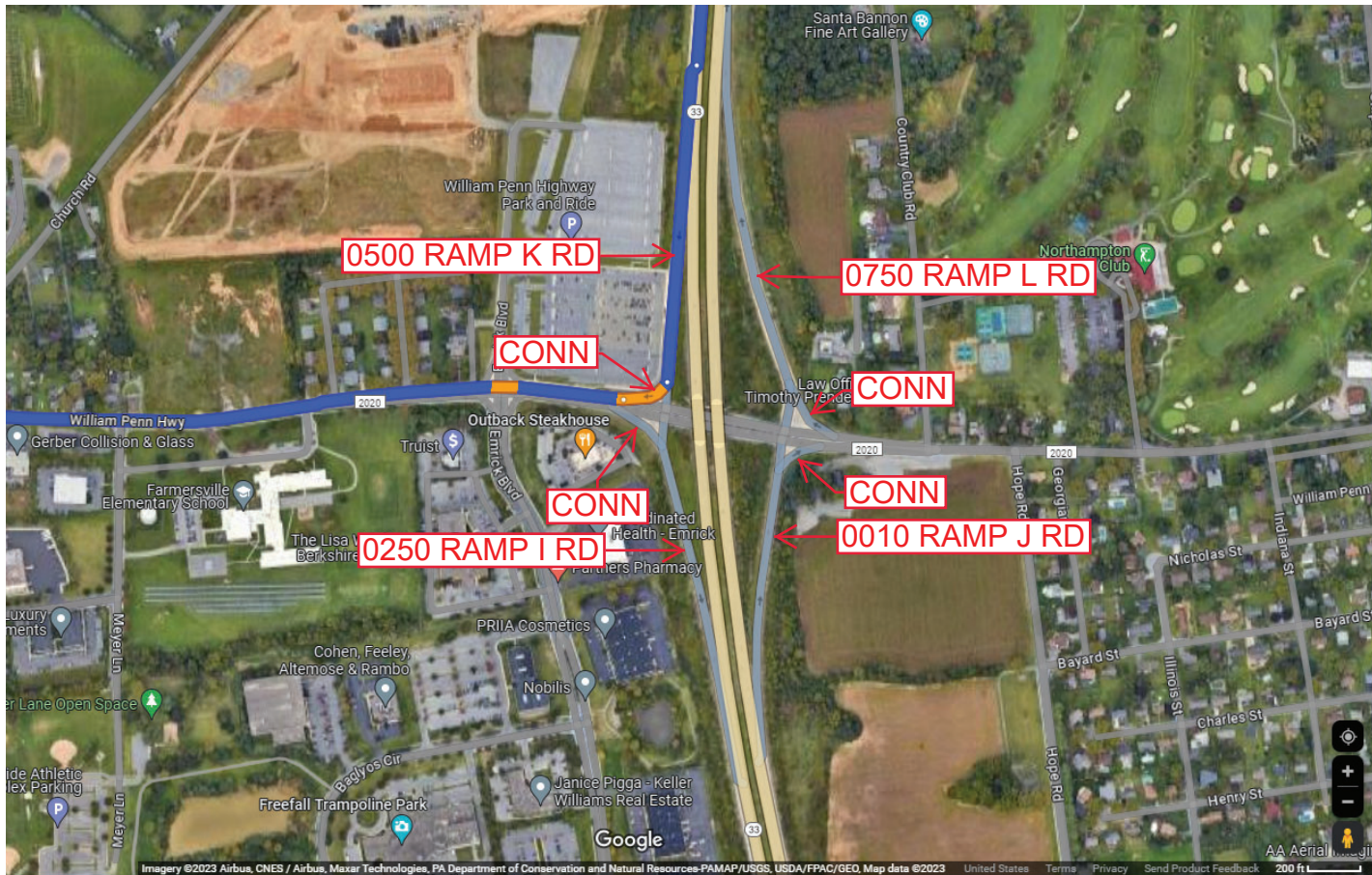
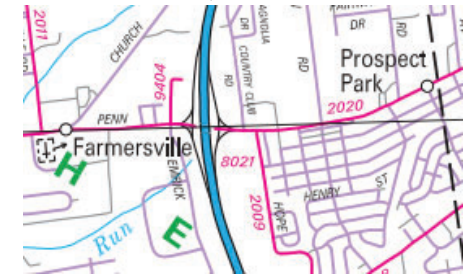
Ramp Segment Number and Ramp Segment Length Information:

Segment	Length	Segment	Length	Segment	Length	Segment	Length
0010	0917						
0250	0785						
0500	0771						
0750	1350						

Primary Route Interchange Exit Number

Secondary Route Interchange Exit Number

PennDOT Type 10 Map View:



Last Date Modified:

Dec 27, 2023

County: 48

# RMS Interchange Information

Print Form

Interchange Number: 8023

Bureau of Maintenance & Operations  
Asset Management Division



Interchange Name: TATAMY INT

Intersecting SR's: PA 33 & SR 1002 Main St

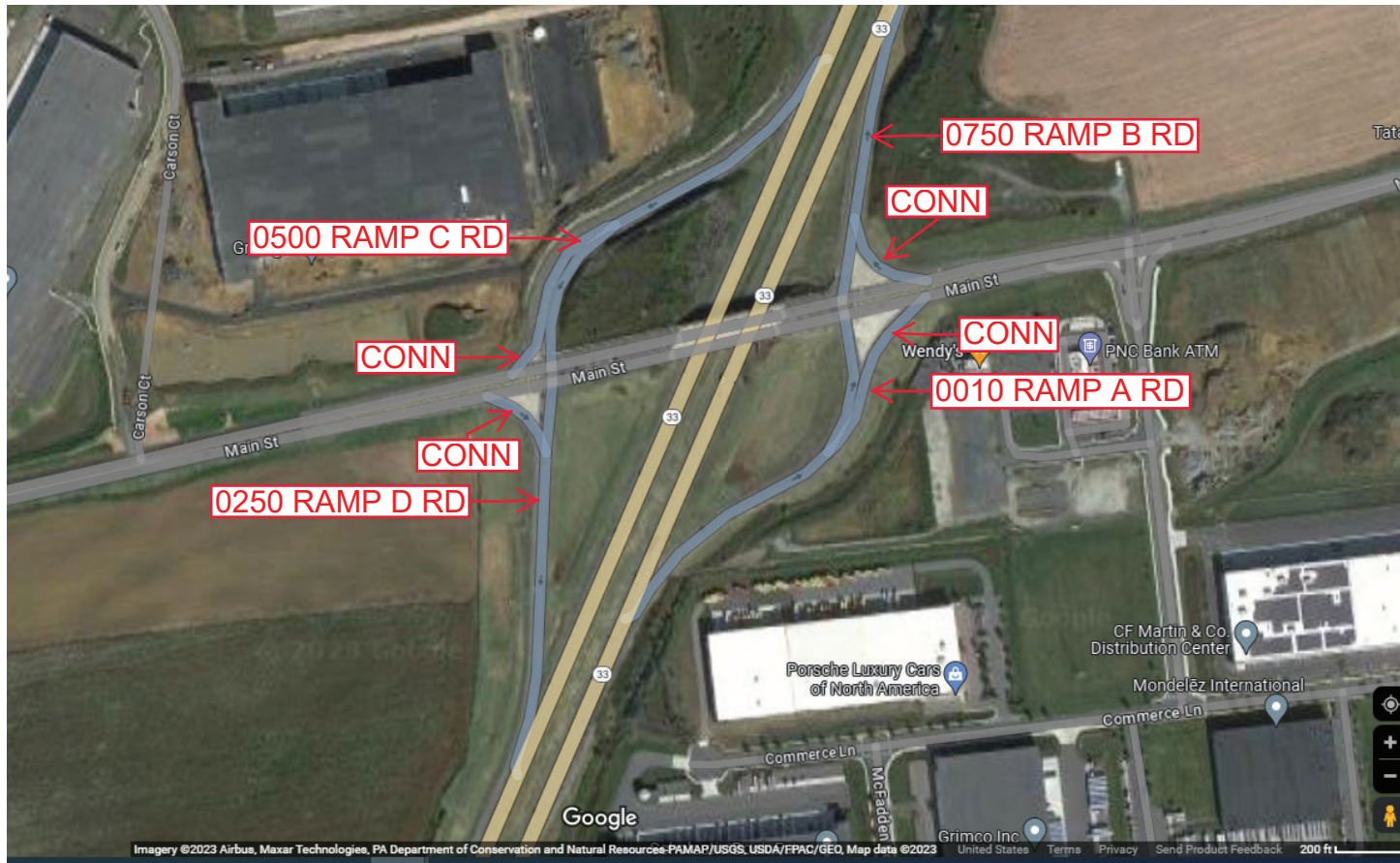
Ramp Segment Number and Ramp Segment Length Information:

Segment	Length	Segment	Length	Segment	Length	Segment	Length
0010	1000						
0250	0925						
0500	1076						
0750	0698						

Primary Route Interchange Exit Number

Secondary Route Interchange Exit Number

PennDOT Type 10 Map View:



Last Date Modified: Dec 27, 2023

County: 48

# RMS Interchange Information

Print Form

Interchange Number: 9101

Bureau of Maintenance & Operations  
Asset Management Division



Interchange Name: BLUE MOUNTAIN DR INT

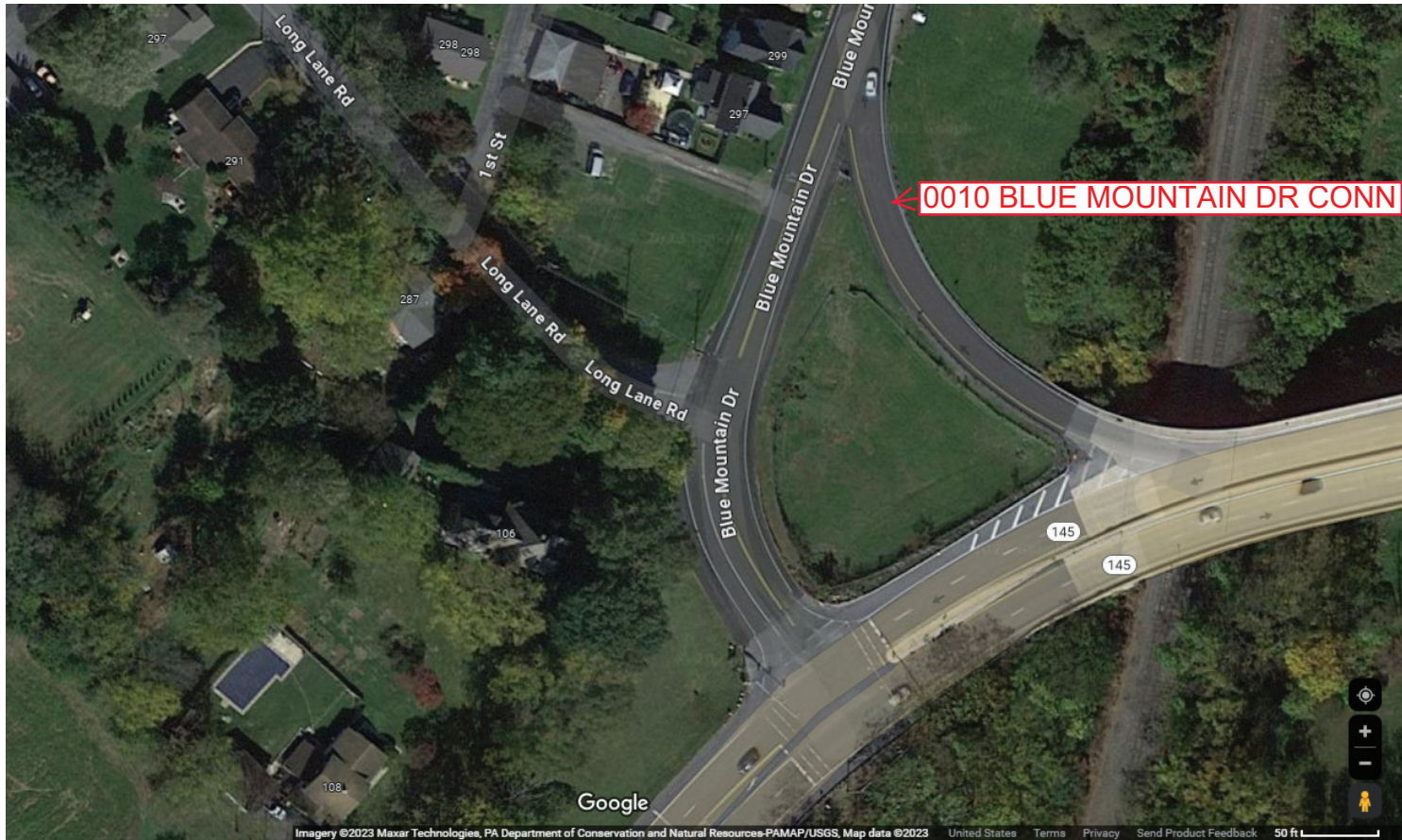
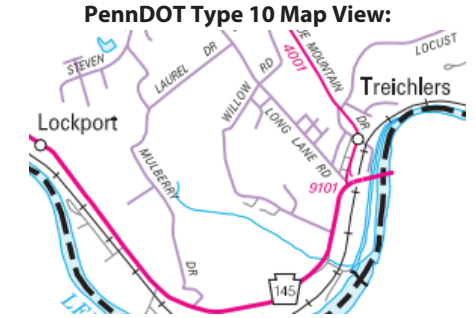
Intersecting SR's: PA 145 Riverview Dr & SR 4001 Blue Mountain Dr

Ramp Segment Number and Ramp Segment Length Information:

Segment	Length	Segment	Length	Segment	Length	Segment	Length
0010	0242						

Primary Route Interchange Exit Number

Secondary Route Interchange Exit Number



Last Date Modified: Jan 4, 2024

County: 48

# RMS Interchange Information

Print Form

Interchange Number: 9402

Bureau of Maintenance & Operations  
Asset Management Division



Interchange Name: US 22

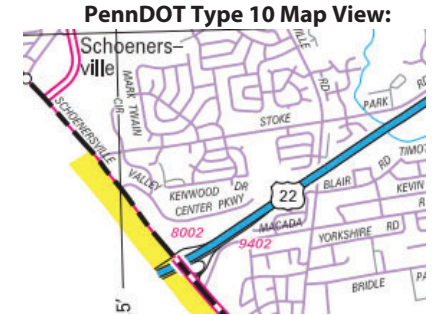
Intersecting SR's: US 22 Lehigh Valley Thruway, SR 8002 & SR9406

Ramp Segment Number and Ramp Segment Length Information:

Segment	Length	Segment	Length	Segment	Length	Segment	Length
0010	2193						

Primary Route Interchange Exit Number

Secondary Route Interchange Exit Number



Last Date Modified: Jan 4, 2024

County: 48

# RMS Interchange Information

Bureau of Maintenance & Operations  
Asset Management Division

Print Form



Interchange Number: 9404

Interchange Name: BETHLEHEM PARK -N-RIDE

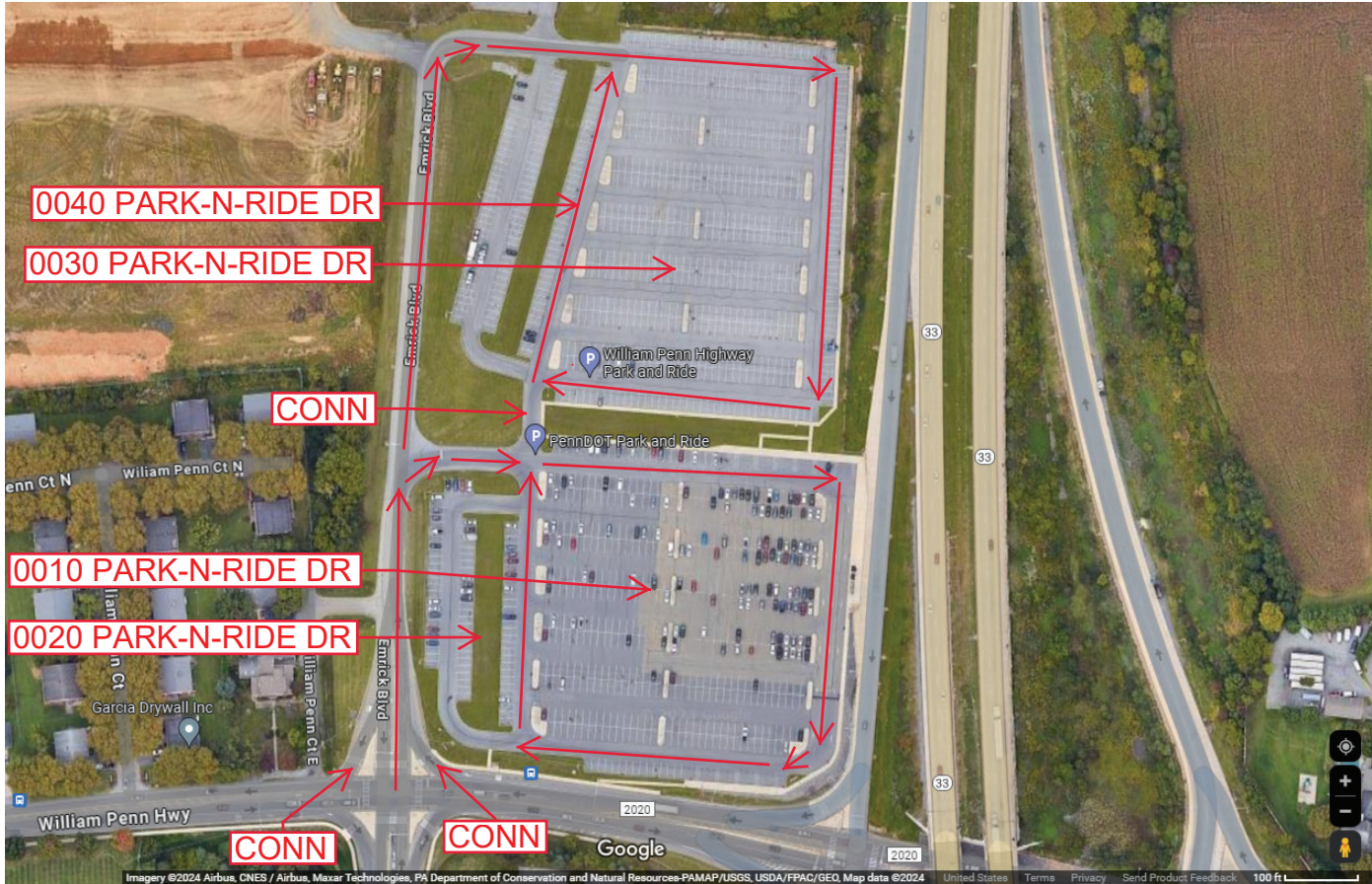
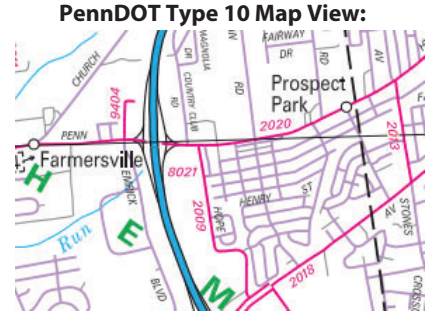
Intersecting SR's: SR 2020 William Penn Hw

Ramp Segment Number and Ramp Segment Length Information:

Segment	Length	Segment	Length	Segment	Length	Segment	Length
0010	2150						
0020	0500						
0030	2347						
0040	0500						

Primary Route Interchange Exit Number

Secondary Route Interchange Exit Number



Last Date Modified: Jan 7, 2025



County: 48

# RMS Interchange Information

Print Form

Interchange Number: 9406

Bureau of Maintenance & Operations  
Asset Management Division



Interchange Name: SHIMERSVILLE RD JUGHANDLE

Intersecting SR's: PA 412 Forth St & SR 214 Shimersville Rd

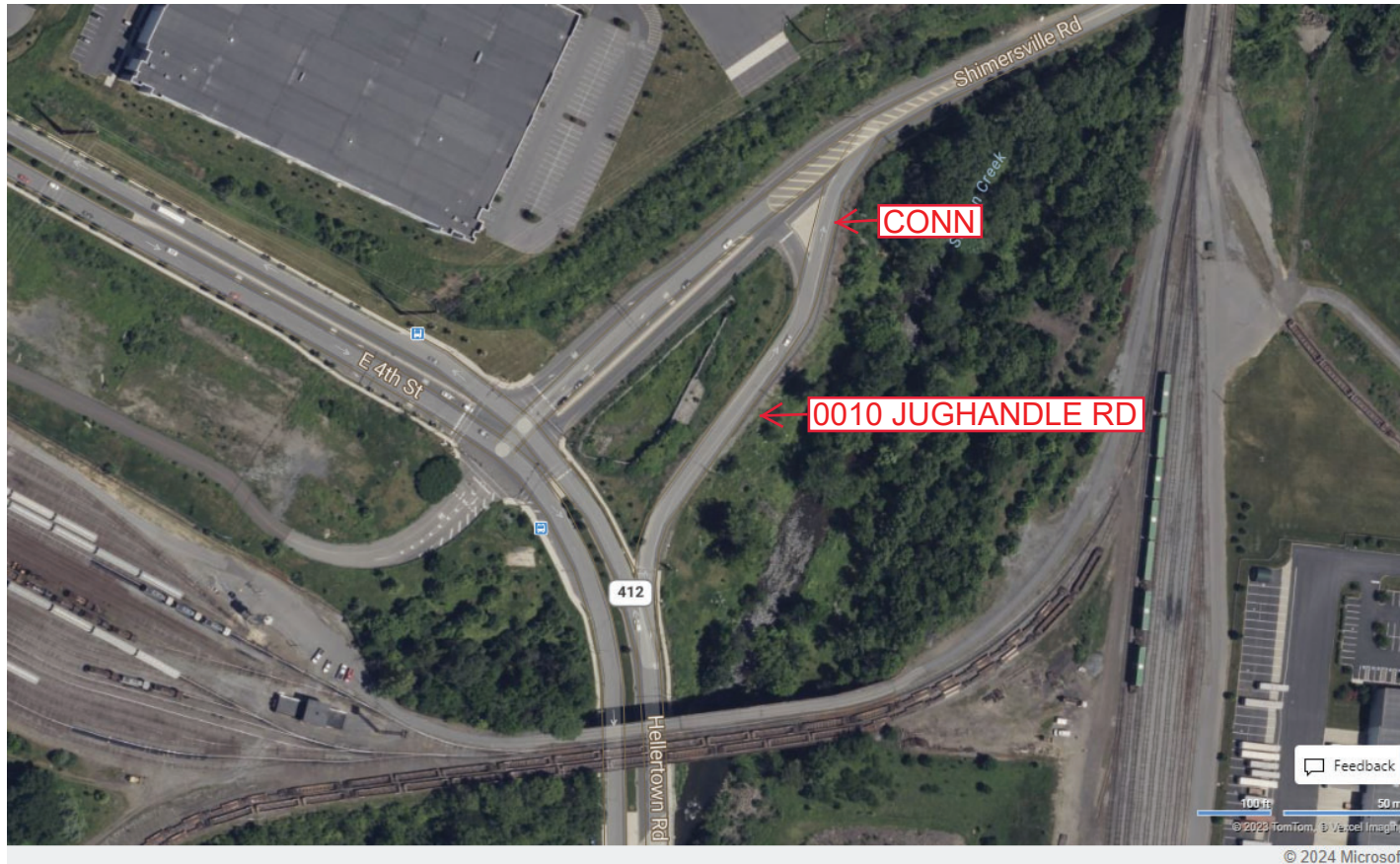
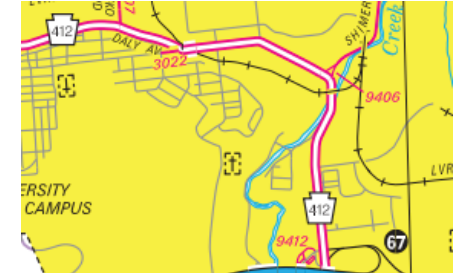
Ramp Segment Number and Ramp Segment Length Information:

Segment	Length	Segment	Length	Segment	Length	Segment	Length
0010	0560						

Primary Route Interchange Exit Number

Secondary Route Interchange Exit Number

PennDOT Type 10 Map View:



Last Date Modified:

Jan 10, 2024

County: 48

# RMS Interchange Information

Print Form

Interchange Number: 9412

Bureau of Maintenance & Operations  
Asset Management Division



Interchange Name: HELLERTOWN CITY PARK-N-RIDE

Intersecting SR's: (TWP) Silvex Rd

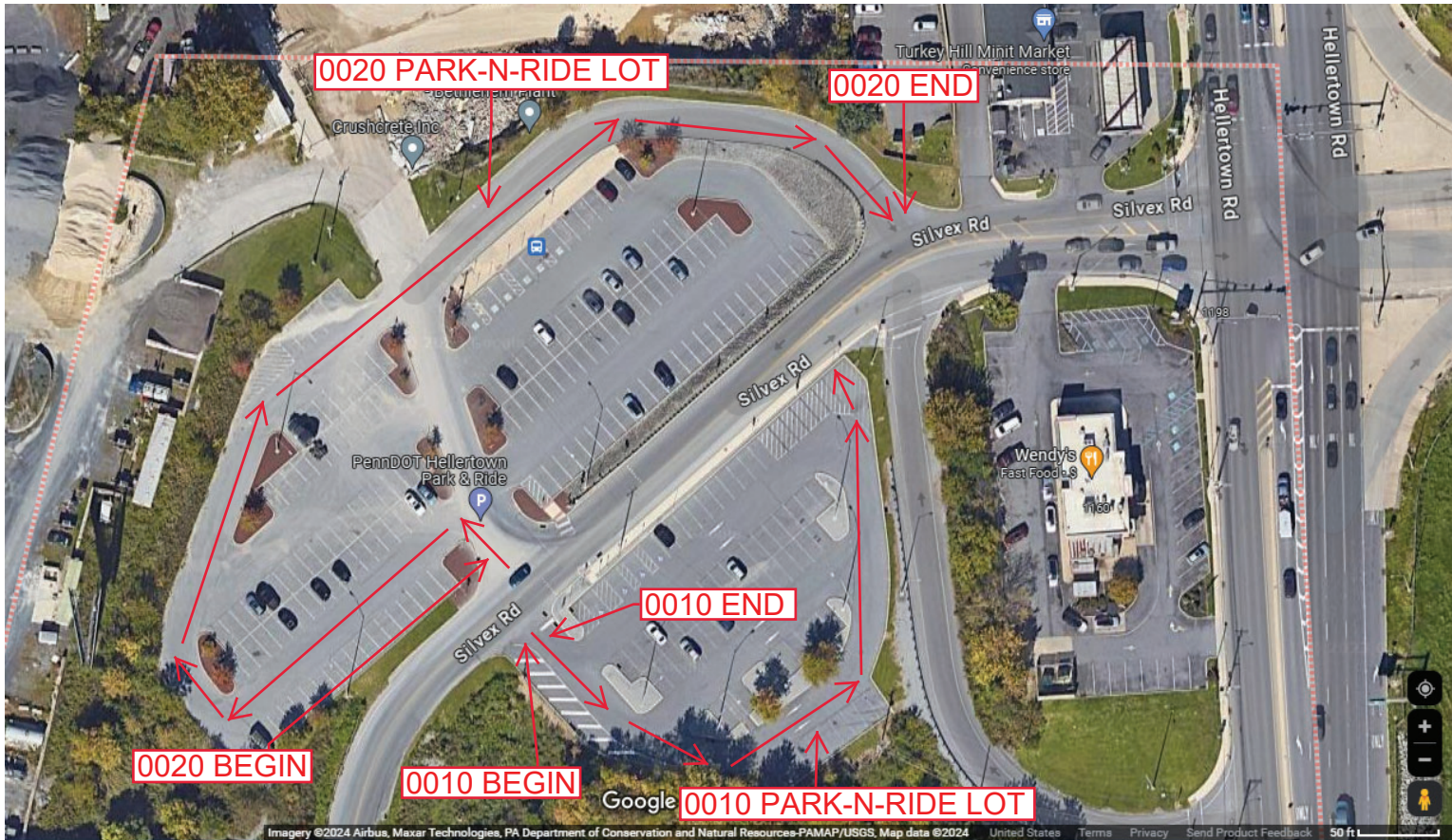
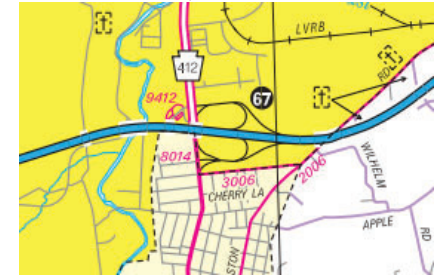
Ramp Segment Number and Ramp Segment Length Information:

Segment	Length	Segment	Length	Segment	Length	Segment	Length
0010	0234						
0020	0553						

Primary Route  
Interchange Exit  
Number

Secondary Route  
Interchange Exit  
Number

PennDOT Type 10 Map View:



Last Date Modified:

Oct 31, 2024