

County: 53

# RMS Interchange Information

Print Form

Interchange Number: 8001

Bureau of Maintenance & Operations  
Asset Management Division



Interchange Name: PINE GROVE INT

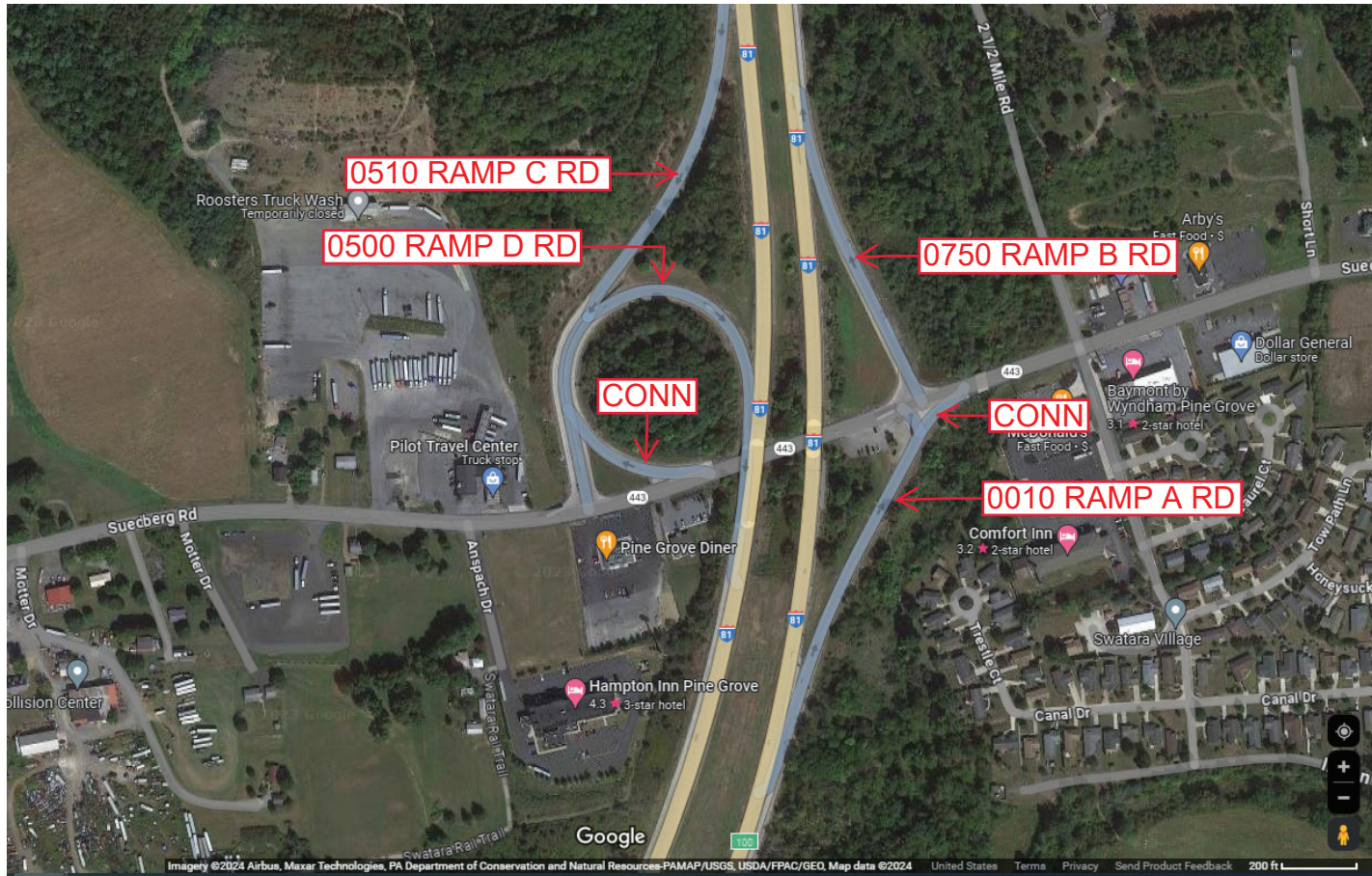
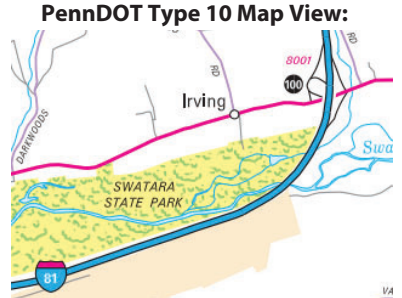
Intersecting SR's: I-81 & PA 443 Suedberg Rd

Ramp Segment Number and Ramp Segment Length Information:

Segment	Length	Segment	Length	Segment	Length	Segment	Length
0010	0832						
0500	1084						
0510	1492						
0750	0709						

Primary Route Interchange Exit Number: 100

Secondary Route Interchange Exit Number:



Last Date Modified: Jan 19, 2024

County: 53

# RMS Interchange Information

Print Form

Interchange Number: 8002

Bureau of Maintenance & Operations  
Asset Management Division



Interchange Name: GILBERTON INT

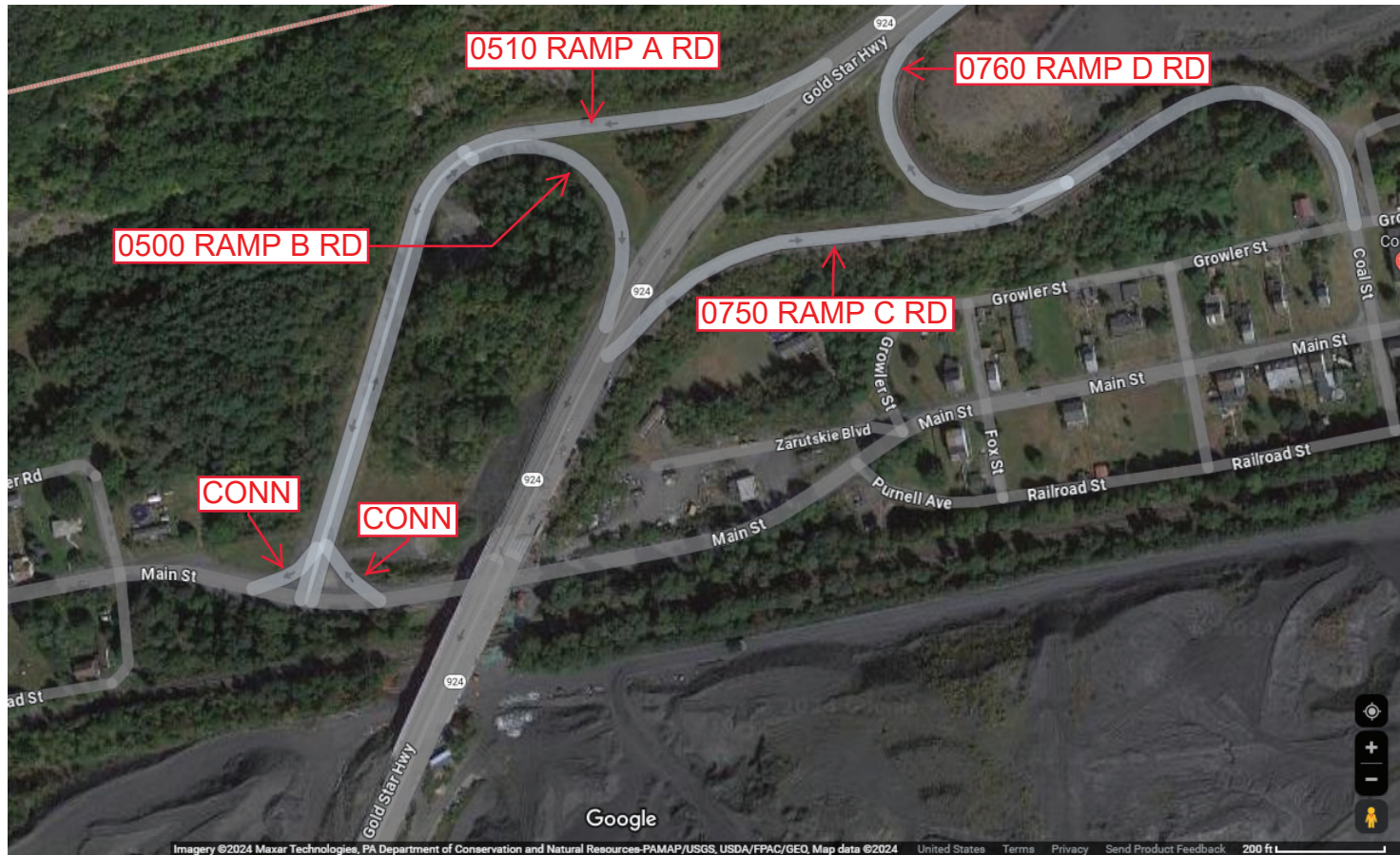
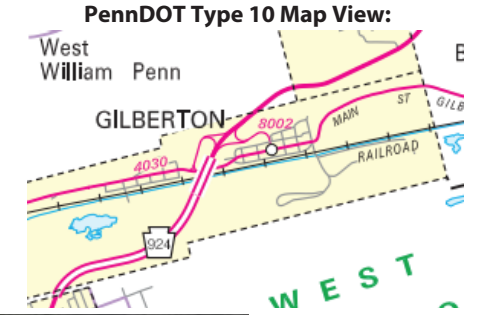
Intersecting SR's: PA 924 Gold Star Hw & SR 4030 Main St

Ramp Segment Number and Ramp Segment Length Information:

Segment	Length	Segment	Length	Segment	Length	Segment	Length
0500	1293						
0510	1408						
0750	1728						
0760	1467						

Primary Route Interchange Exit Number

Secondary Route Interchange Exit Number



Last Date Modified: Jan 19, 2024

County: 53

# RMS Interchange Information

Print Form

Interchange Number: 8003

Bureau of Maintenance & Operations  
Asset Management Division



Interchange Name: RAVINE INT

Intersecting SR's: I-81 & SR 3013 Molleystown Rd

Ramp Segment Number and Ramp Segment Length Information:

Segment	Length	Segment	Length	Segment	Length	Segment	Length
0010	1136						
0020	1015						
0250	0826						
0260	0757						

Primary Route Interchange Exit Number: 104

Secondary Route Interchange Exit Number

PennDOT Type 10 Map View:



Last Date Modified: Nov 5, 2024

County: 53

# RMS Interchange Information

Print Form

Interchange Number: 8005

Bureau of Maintenance & Operations  
Asset Management Division



Interchange Name: TREMONT/TOWER CITY INT

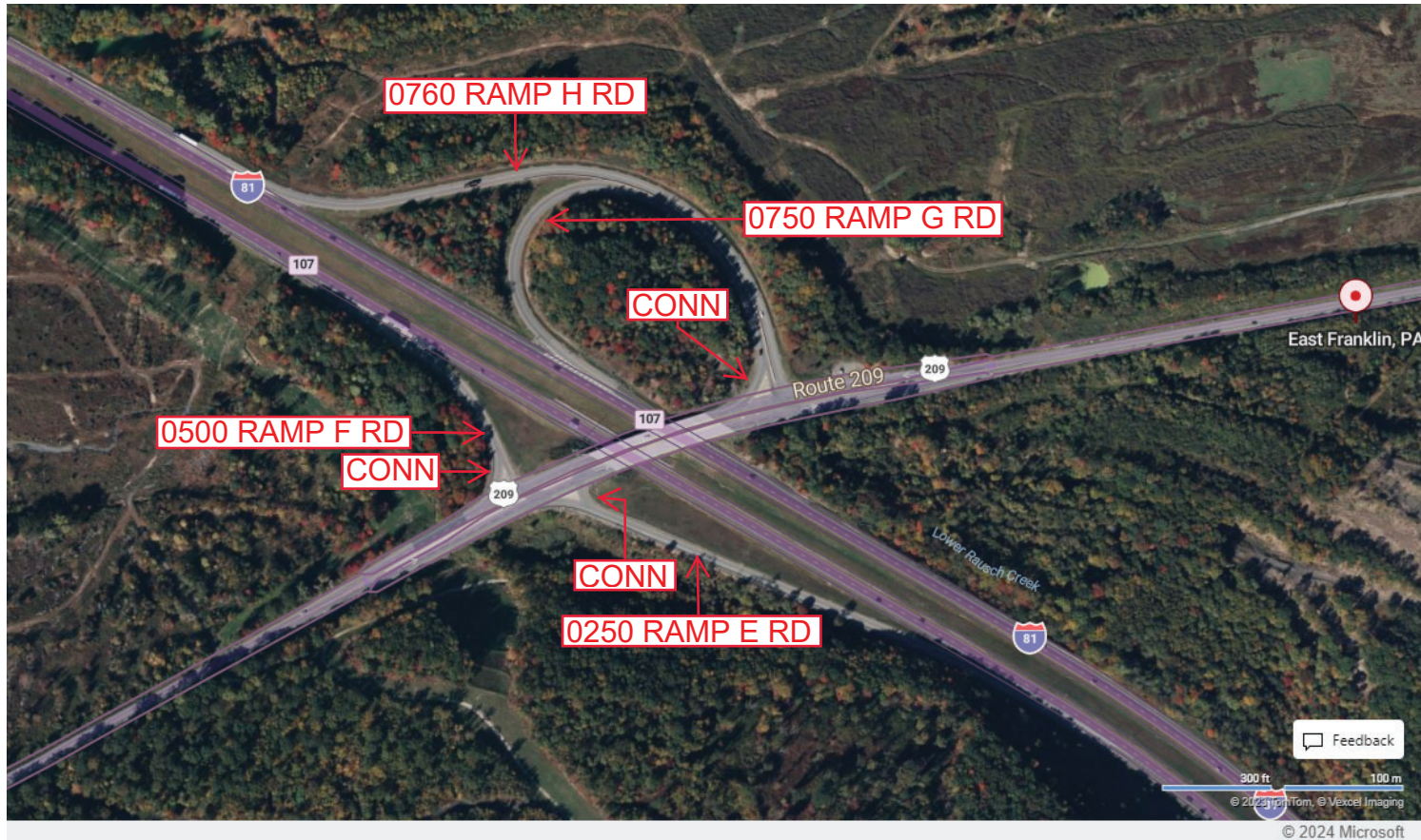
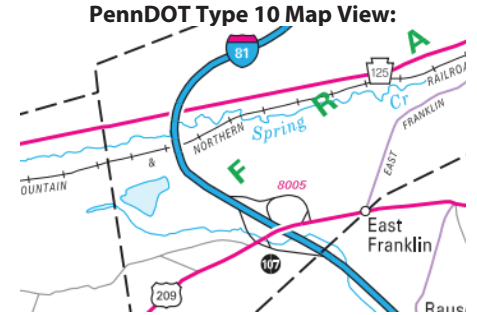
Intersecting SR's: I-81 & US 209

Ramp Segment Number and Ramp Segment Length Information:

Segment	Length	Segment	Length	Segment	Length	Segment	Length
0250	1237						
0500	0454						
0750	1464						
0760	1752						

Primary Route Interchange Exit Number: 107

Secondary Route Interchange Exit Number



Last Date Modified: Jan 22, 2024

County: 53

# RMS Interchange Information

Print Form

Interchange Number: 8007

Bureau of Maintenance & Operations  
Asset Management Division



Interchange Name: HEGINS INT

Intersecting SR's: I-81 & PA 25

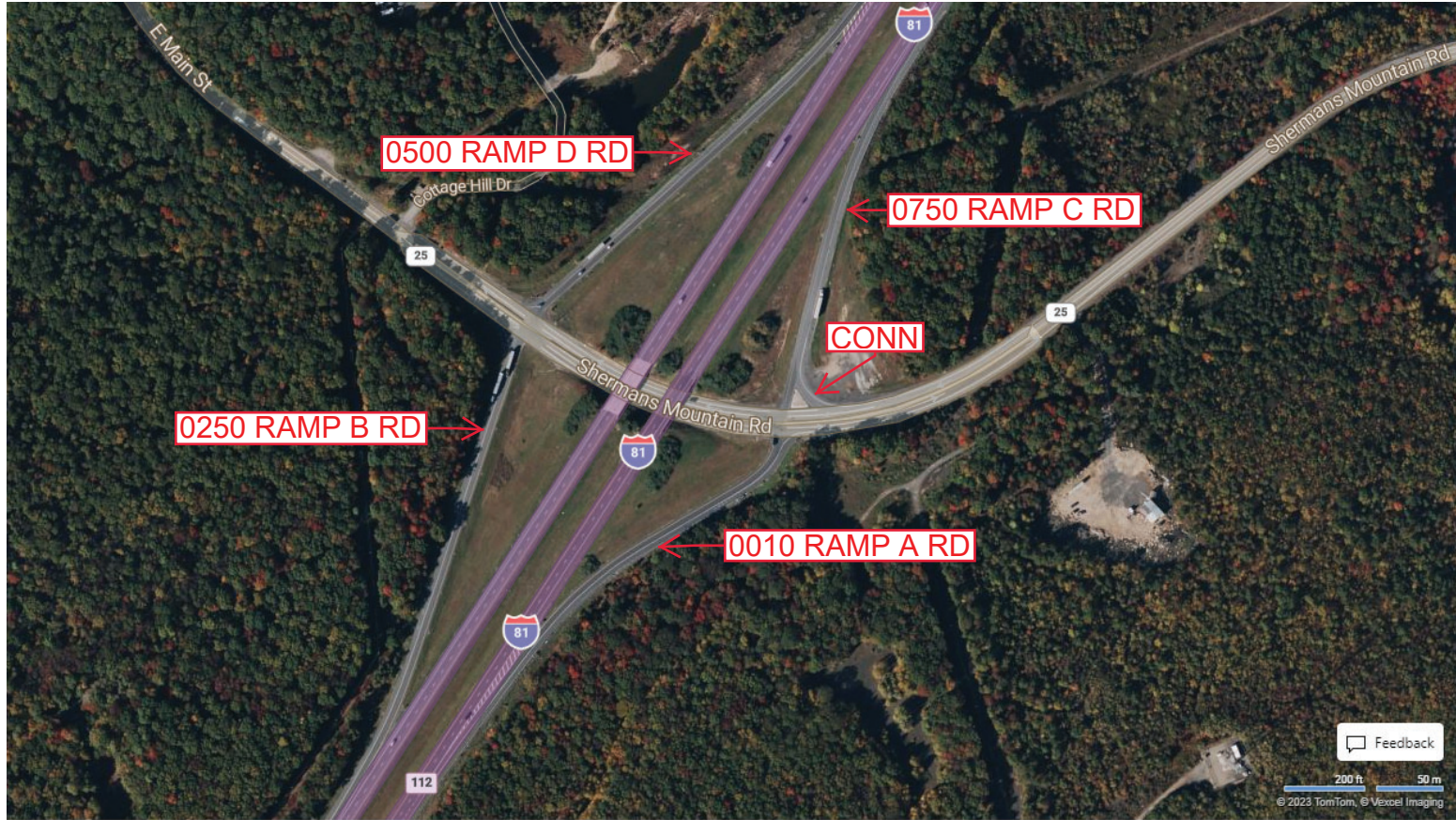
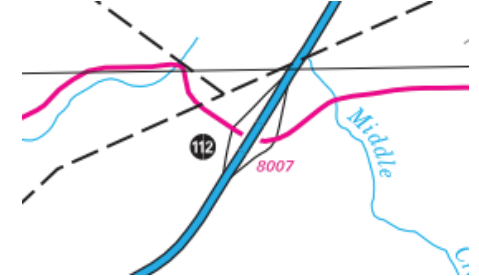
Ramp Segment Number and Ramp Segment Length Information:

Segment	Length	Segment	Length	Segment	Length	Segment	Length
0010	0810						
0250	1072						
0500	1039						
0750	0773						

Primary Route Interchange Exit Number: 112

Secondary Route Interchange Exit Number

PennDOT Type 10 Map View:



Feedback

200 ft 50 m  
© 2023 TomTom, © Vexcel Imaging

© 2024 Microsoft

Last Date Modified: Jan 22, 2024

County: 53

# RMS Interchange Information

Print Form

Interchange Number: 8009

Bureau of Maintenance & Operations  
Asset Management Division



Interchange Name: MINERSVILLE INT

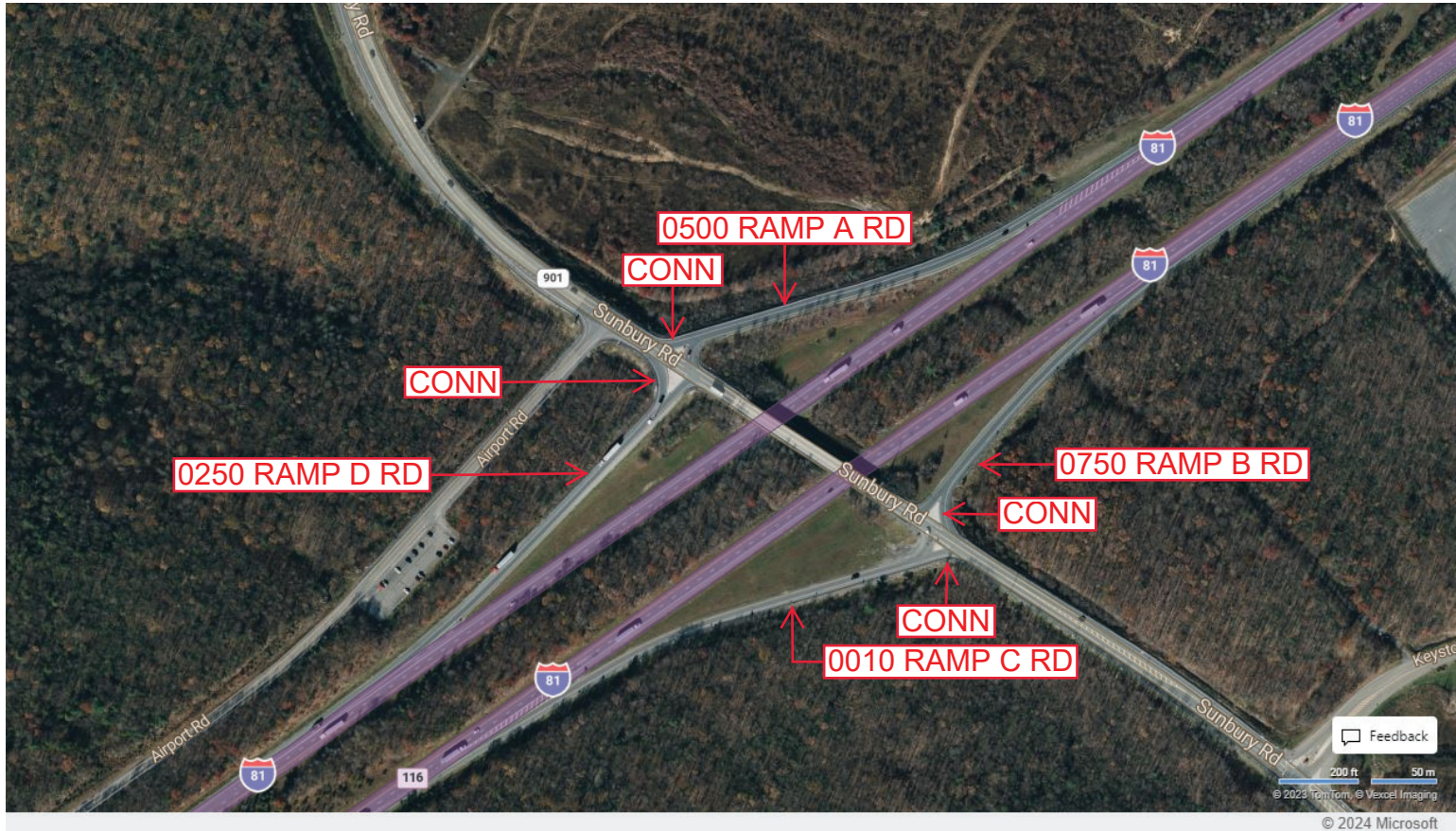
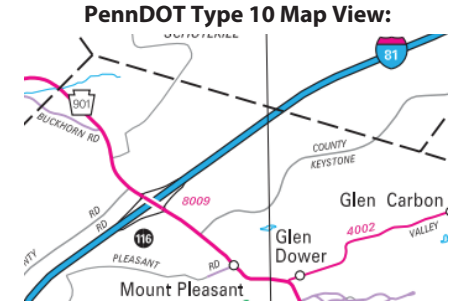
Intersecting SR's: I-81 & PA 901 Sunbury Rd

Ramp Segment Number and Ramp Segment Length Information:

Segment	Length	Segment	Length	Segment	Length	Segment	Length
0010	1043						
0250	0992						
0500	1031						
0750	0719						

Primary Route Interchange Exit Number: 116

Secondary Route Interchange Exit Number



Last Date Modified: Jan 8, 2025

County: 53

# RMS Interchange Information

Print Form

Interchange Number: 8011

Bureau of Maintenance & Operations  
Asset Management Division



Interchange Name: FRACKVILLE/ST CLAIR INT

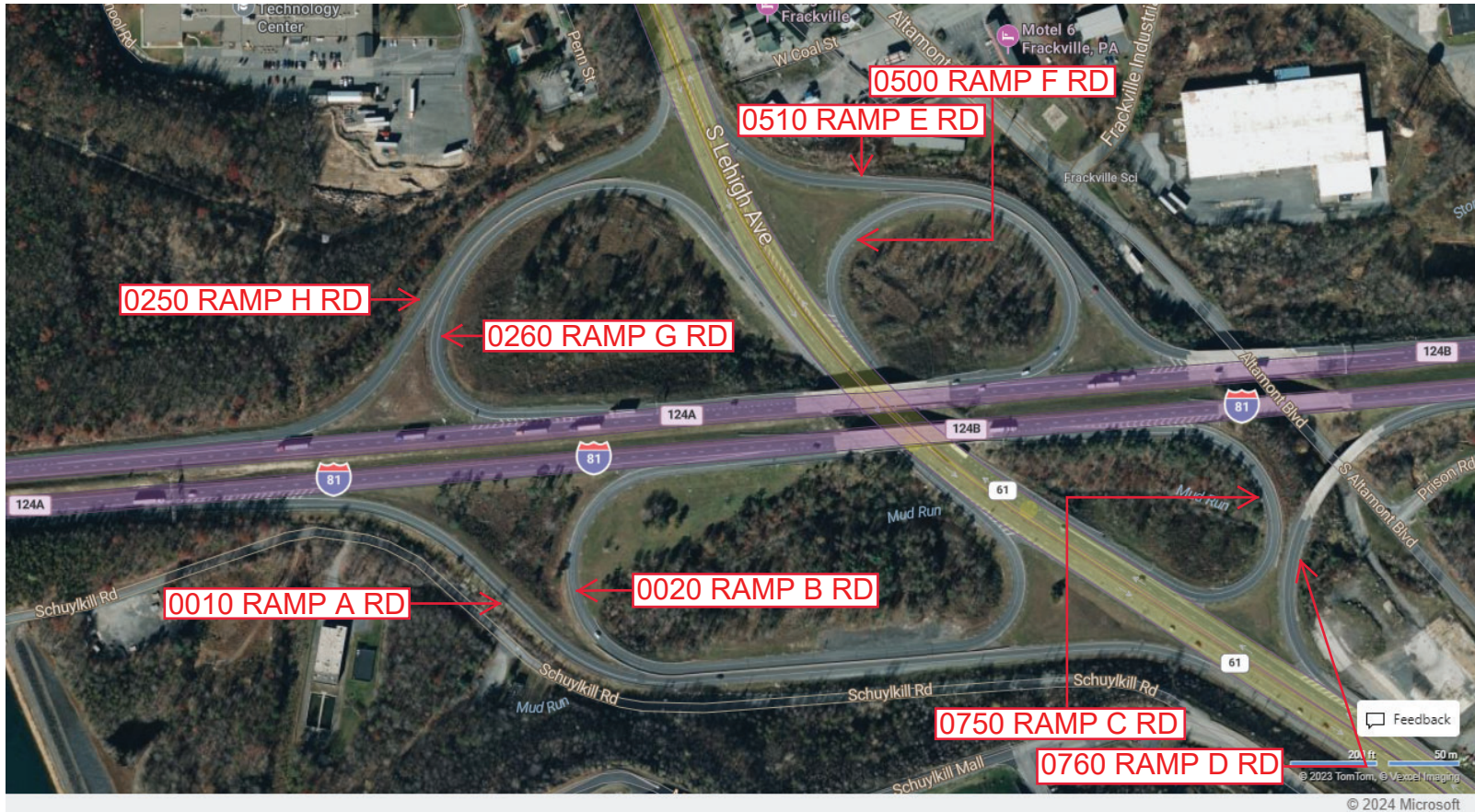
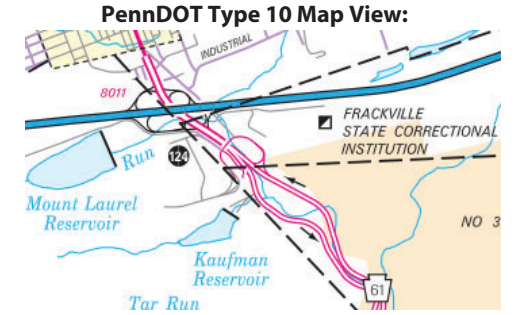
Intersecting SR's: I-81 & PA 61

Ramp Segment Number and Ramp Segment Length Information:

Segment	Length	Segment	Length	Segment	Length	Segment	Length
0010	2227	0510	1219				
0020	1670	0750	0608				
0250	1196	0760	0763				
0260	1244						
0500	1026						

Primary Route Interchange Exit Number: 124A

Secondary Route Interchange Exit Number: 124B



Last Date Modified: Jan 8, 2025

County: 53

# RMS Interchange Information

Print Form

Interchange Number: 8013

Bureau of Maintenance & Operations  
Asset Management Division



Interchange Name: HOMETOWN/MAHANOY CITY INT

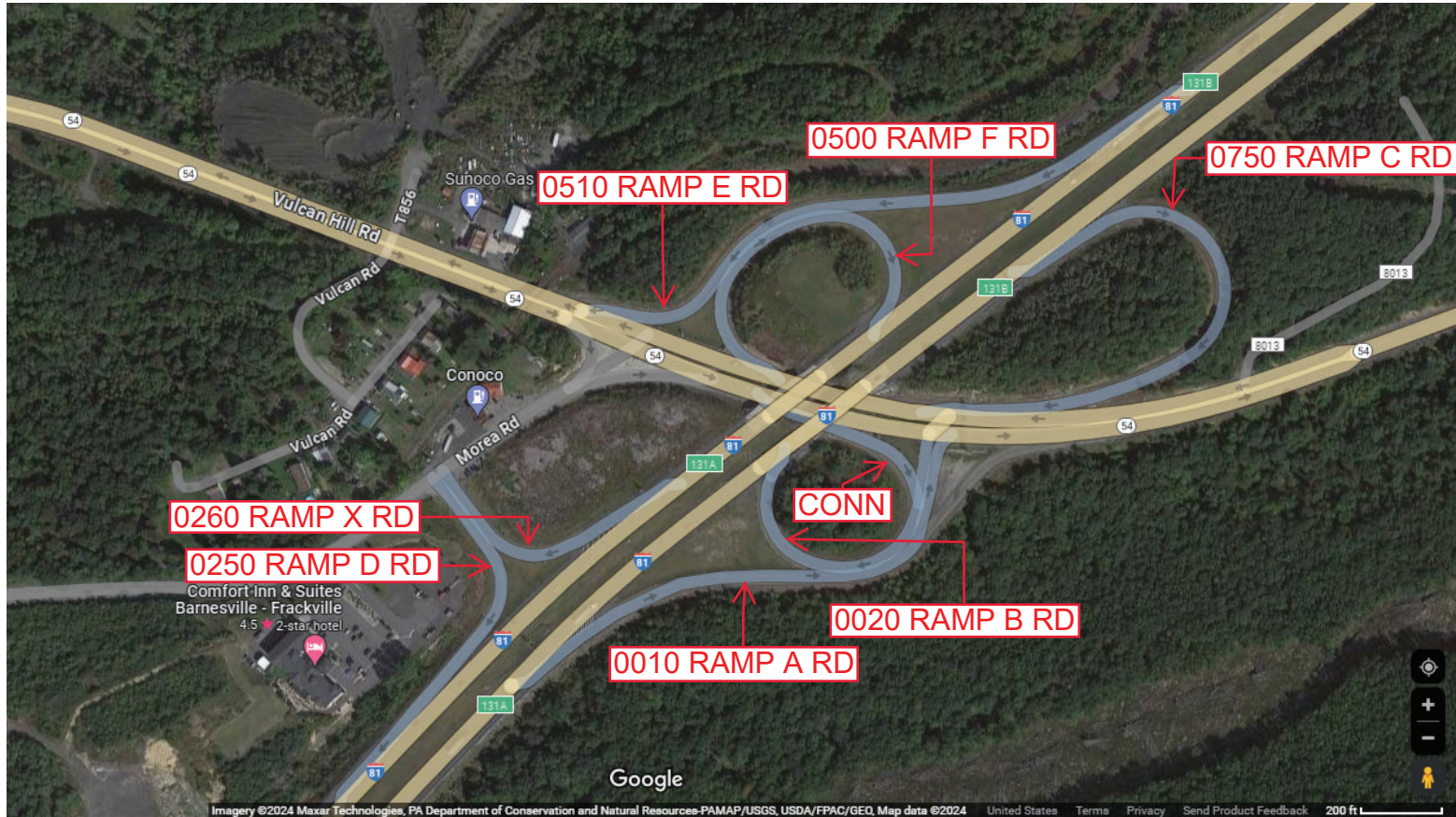
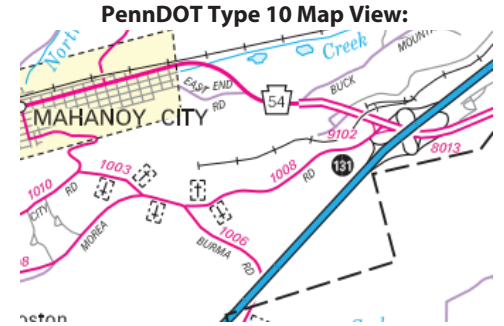
Intersecting SR's: I-81, PA 54 & SR 1008 Morea Rd

Ramp Segment Number and Ramp Segment Length Information:

Segment	Length	Segment	Length	Segment	Length	Segment	Length
0010	1167	0510	1227				
0020	0789	0750	0987				
0250	0672						
0260	0427						
0500	0846						

Primary Route Interchange Exit Number: 131A

Secondary Route Interchange Exit Number: 131B



Last Date Modified:

Jan 22, 2024



County: 53

# RMS Interchange Information

Print Form

Interchange Number: 8015

Bureau of Maintenance & Operations  
Asset Management Division



Interchange Name: DELANO INT

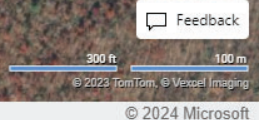
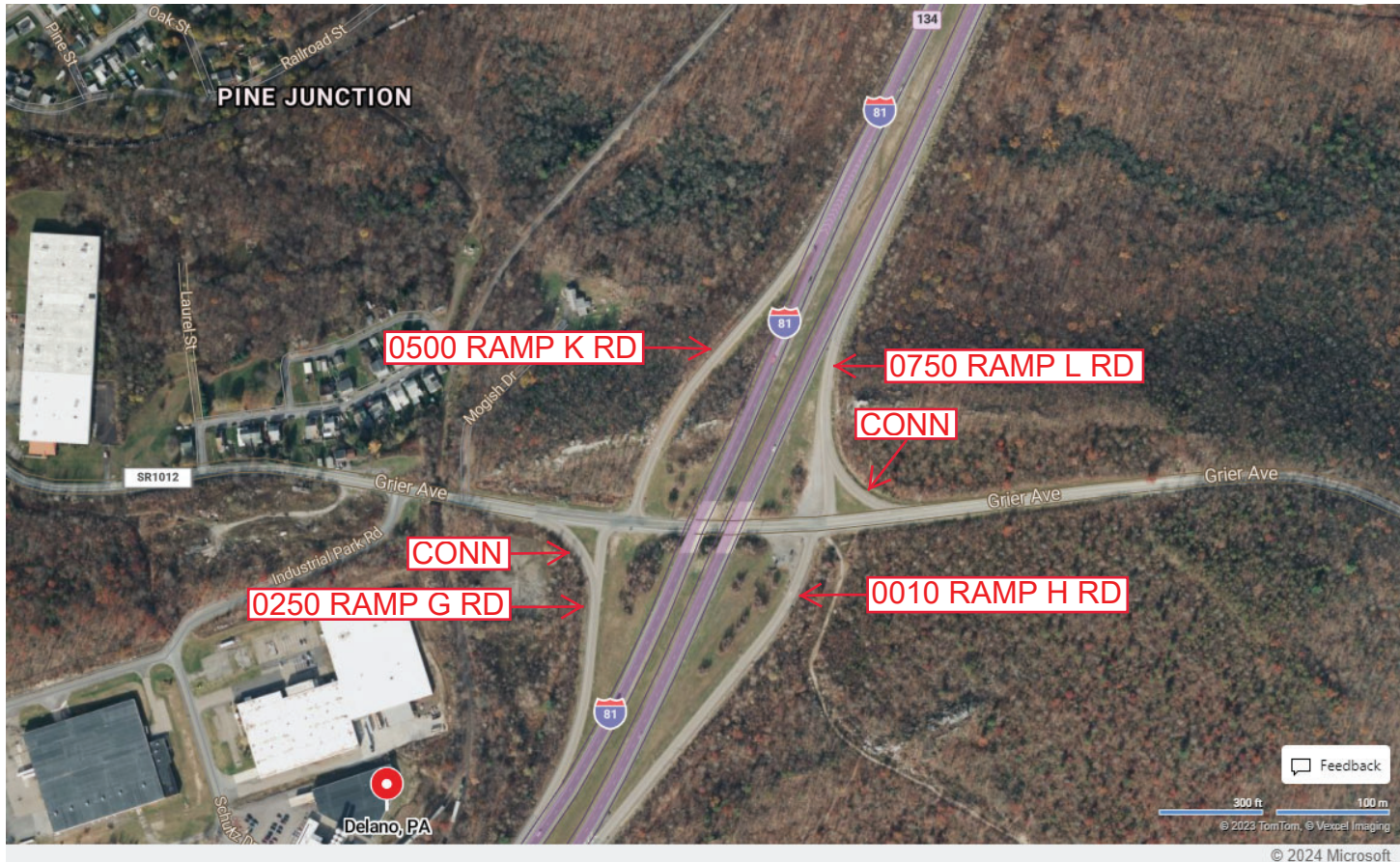
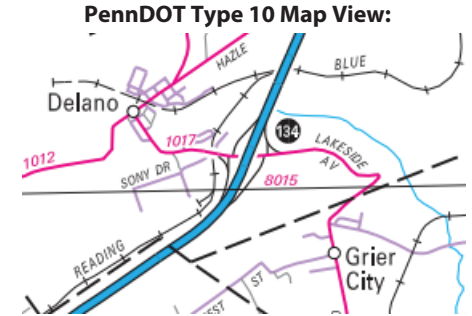
Intersecting SR's: I-81 & SR 1017 Grier Rd

Ramp Segment Number and Ramp Segment Length Information:

Segment	Length	Segment	Length	Segment	Length	Segment	Length
0010	1110						
0250	0876						
0500	0994						
0750	0524						

Primary Route Interchange Exit Number: 134

Secondary Route Interchange Exit Number



Last Date Modified: Nov 5, 2024

County: 53

# RMS Interchange Information

Print Form

Bureau of Maintenance & Operations  
Asset Management Division



Interchange Number: 8017

Interchange Name: MCADOO INT

Intersecting SR's: I-81 & PA 309

Ramp Segment Number and Ramp Segment Length Information:

Segment	Length	Segment	Length	Segment	Length	Segment	Length
0010	1069	0260	2810				
0020	4106	0750	2175				
0030	0662	0760	0999				
0040	1596	0770	2305				
0250	4703	0780	2081				

Primary Route Interchange Exit Number: 138

Secondary Route Interchange Exit Number

PennDOT Type 10 Map View:



Last Date Modified: Jan 23, 2024

County: 53

# RMS Interchange Information

Bureau of Maintenance & Operations  
Asset Management Division

Print Form



Interchange Number: 8019

Interchange Name: HIGHRIDGE PARK RD INT

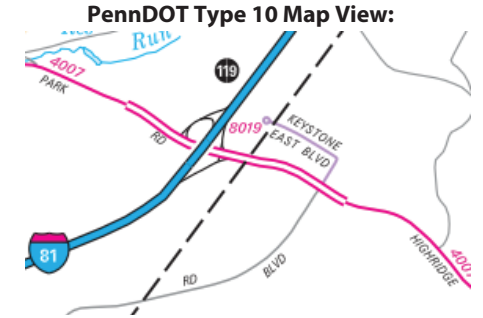
Intersecting SR's: I-81 & SR 4007 Highridge Park Rd

Ramp Segment Number and Ramp Segment Length Information:

Segment	Length	Segment	Length	Segment	Length	Segment	Length
0010	2622	0750	1568				
0020	0259	0760	0466				
0500	1955						
0510	0446						
0520	2410						

Primary Route Interchange Exit Number: 119

Secondary Route Interchange Exit Number



Last Date Modified:

Jan 24, 2024

County: 53

# RMS Interchange Information

Bureau of Maintenance & Operations  
Asset Management Division

Print Form



Interchange Number: 9101

Interchange Name: SR 183 JUGHANDLE RD

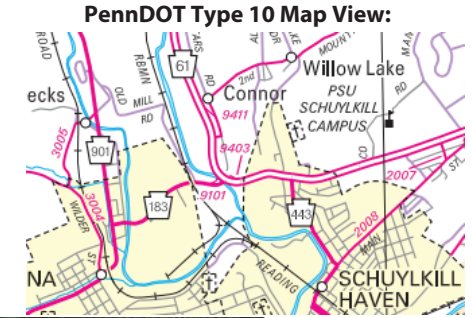
Intersecting SR's: PA 61 & PA 183

Ramp Segment Number and Ramp Segment Length Information:

Segment	Length	Segment	Length	Segment	Length	Segment	Length
0500	0278						

Primary Route Interchange Exit Number

Secondary Route Interchange Exit Number



Last Date Modified: Jan 24, 2024

County: 53

# RMS Interchange Information

Print Form

Interchange Number: 9102

Bureau of Maintenance & Operations  
Asset Management Division



Interchange Name: SR 9102 SH

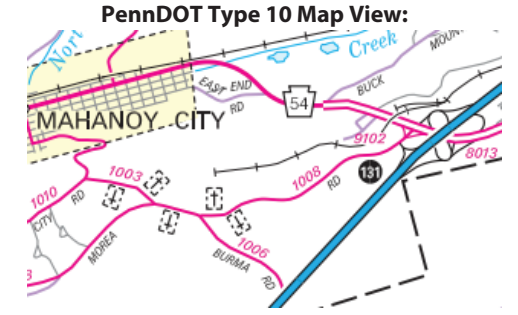
Intersecting SR's: PA 54 & SR 1008 Morea Rd

Ramp Segment Number and Ramp Segment Length Information:

Segment	Length	Segment	Length	Segment	Length	Segment	Length
0750	0205						

Primary Route Interchange Exit Number

Secondary Route Interchange Exit Number



Feedback

50 ft 20 m  
© 2022 TomTom, © Vexxel Imaging  
© 2024 Microsoft

Last Date Modified: Jan 26, 2024

County: 53

# RMS Interchange Information

Print Form

Interchange Number: 9103

Bureau of Maintenance & Operations  
Asset Management Division



Interchange Name: SR 9103 SH

Intersecting SR's: PA 901 & 3001 Cressona Rd

Ramp Segment Number and Ramp Segment Length Information:

Segment	Length	Segment	Length	Segment	Length	Segment	Length
0750	0198						

Primary Route  
Interchange Exit  
Number

Secondary Route  
Interchange Exit  
Number

PennDOT Type 10 Map View:



Last Date Modified:

Jan 26, 2024

County: 53

# RMS Interchange Information

Print Form

Interchange Number: 9104

Bureau of Maintenance & Operations  
Asset Management Division



Interchange Name: SR 9104 SH

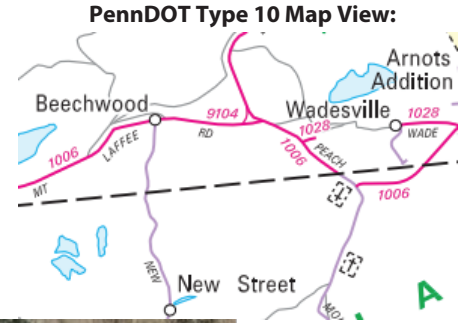
Intersecting SR's: SR 1006 Mt Laffee Rd SR 4003 Darkwater Rd

Ramp Segment Number and Ramp Segment Length Information:

Segment	Length	Segment	Length	Segment	Length	Segment	Length
0250	0276						
0260	0276						

Primary Route Interchange Exit Number

Secondary Route Interchange Exit Number



Last Date Modified: Jan 26, 2024

County: 53

# RMS Interchange Information

Bureau of Maintenance & Operations  
Asset Management Division

Print Form



Interchange Number: 9105

Interchange Name: SR 9105 SH

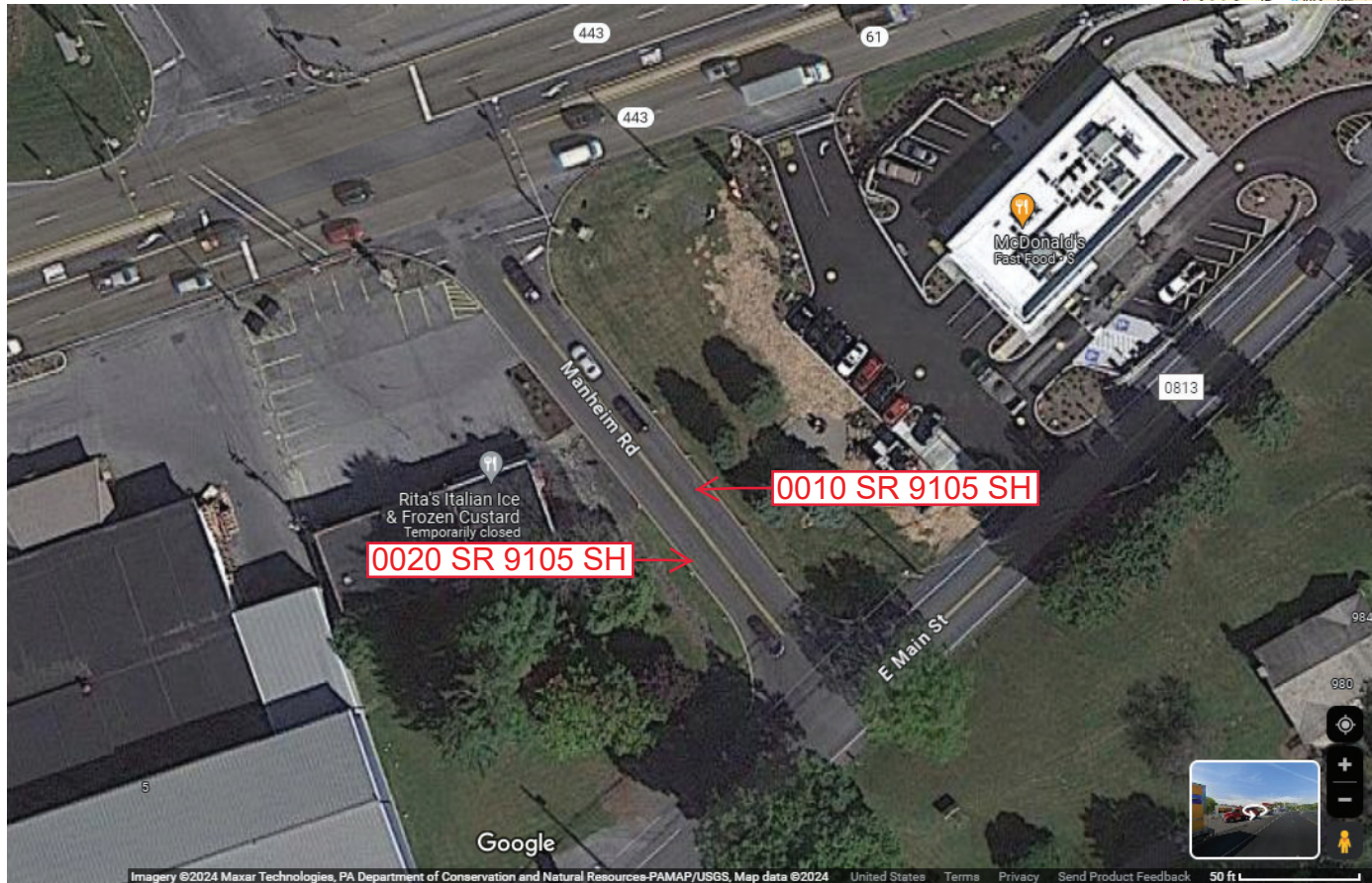
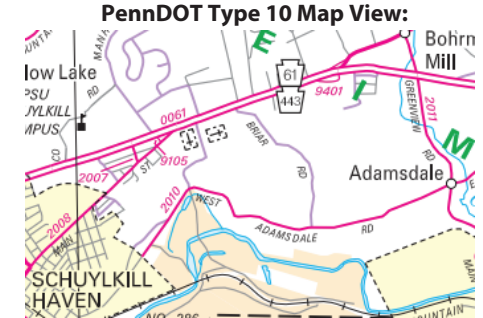
Intersecting SR's: PA 61 & SR 2008 Main St

Ramp Segment Number and Ramp Segment Length Information:

Segment	Length	Segment	Length	Segment	Length	Segment	Length
0010	0247						
0020	0251						

Primary Route Interchange Exit Number

Secondary Route Interchange Exit Number



Last Date Modified: Jan 26, 2024



County: 53

# RMS Interchange Information

Print Form

Interchange Number: 9106

Bureau of Maintenance & Operations  
Asset Management Division



Interchange Name: SR 9106 SH

Intersecting SR's: PA 54 Mahanoy Av & SR 4030 Low Rd

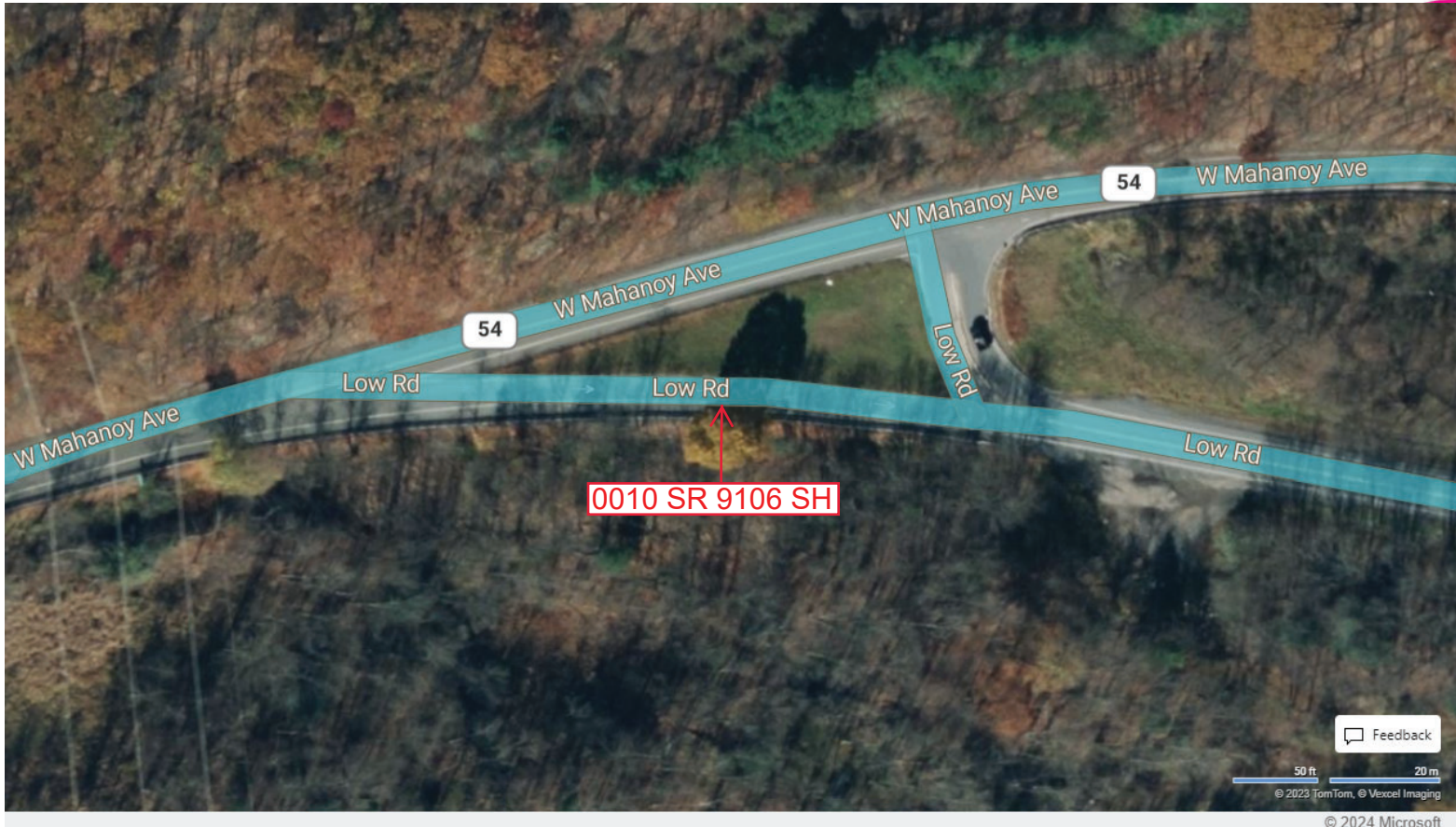
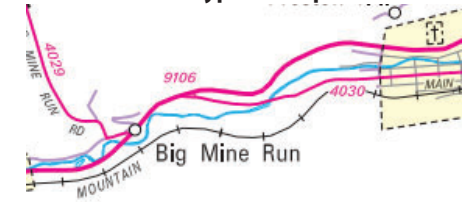
Ramp Segment Number and Ramp Segment Length Information:

Segment	Length	Segment	Length	Segment	Length	Segment	Length
0010	0280						

Primary Route Interchange Exit Number

Secondary Route Interchange Exit Number

PennDOT Type 10 Map View:



Last Date Modified: Jan 29, 2024

County: 53

# RMS Interchange Information

Print Form

Interchange Number: 9107

Bureau of Maintenance & Operations  
Asset Management Division



Interchange Name: SR 9107 SH

Intersecting SR's: PA 61 & T723 Municipal Rd

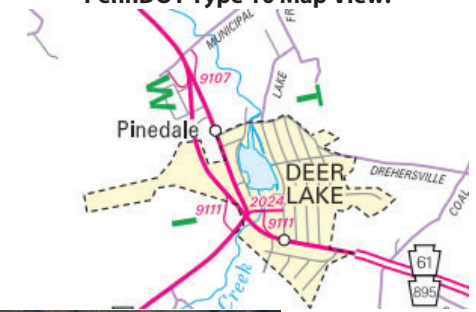
Ramp Segment Number and Ramp Segment Length Information:

Segment	Length	Segment	Length	Segment	Length	Segment	Length
0010	0695						
0250	0720						

Primary Route Interchange Exit Number

Secondary Route Interchange Exit Number

PennDOT Type 10 Map View:



Last Date Modified:

Jan 29, 2024

County: 53

# RMS Interchange Information

Print Form

Interchange Number: 9109

Bureau of Maintenance & Operations  
Asset Management Division



Interchange Name: BRICK HILL RD CONNECTOR

Intersecting SR's: PA 61 & SR 2014

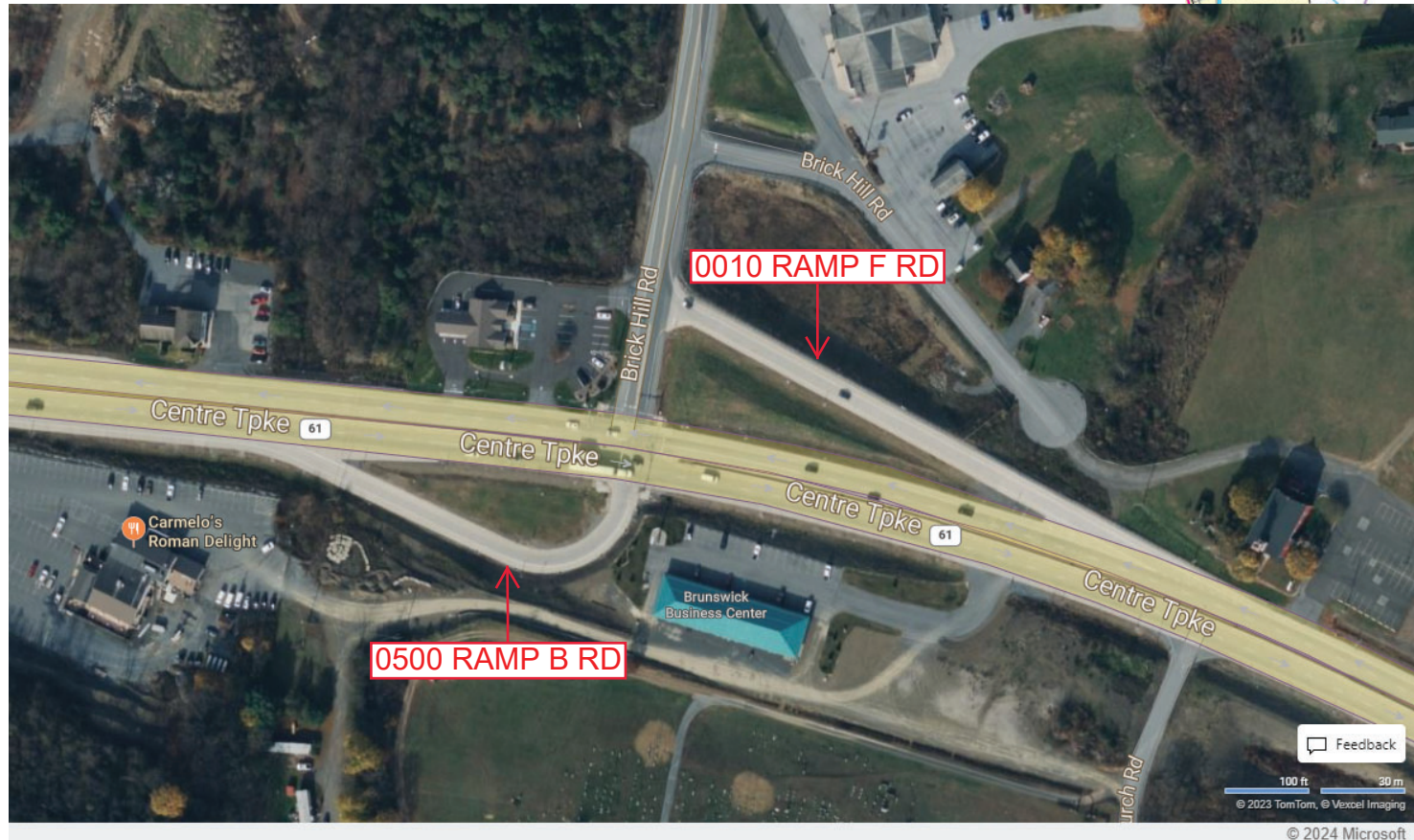
Ramp Segment Number and Ramp Segment Length Information:

Segment	Length	Segment	Length	Segment	Length	Segment	Length
0010	0530						
0500	0406						

Primary Route  
Interchange Exit  
Number

Secondary Route  
Interchange Exit  
Number

PennDOT Type 10 Map View:



Feedback

100 ft 30 m  
© 2023 TomTom, © Vexcel Imaging

© 2024 Microsoft

Last Date Modified:

Jan 30, 2024

County: 53

# RMS Interchange Information

Print Form

Interchange Number: 9111

Bureau of Maintenance & Operations  
Asset Management Division



Interchange Name: SR 9111 SH

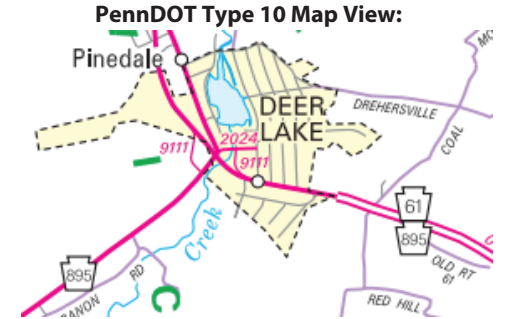
Intersecting SR's: PA 61, PA 895 Market St & SR 2024 Cottage Ln

Ramp Segment Number and Ramp Segment Length Information:

Segment	Length	Segment	Length	Segment	Length	Segment	Length
0010	0485						
0500	0983						

Primary Route Interchange Exit Number

Secondary Route Interchange Exit Number



Last Date Modified: Jan 30, 2024

County: 53

# RMS Interchange Information

Print Form

Interchange Number: 9113

Bureau of Maintenance & Operations  
Asset Management Division



Interchange Name: SR 9113 SH

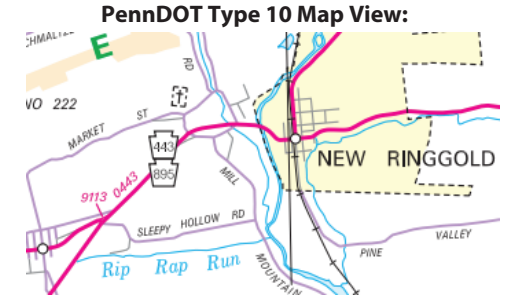
Intersecting SR's: PA 443 Chestnut St

Ramp Segment Number and Ramp Segment Length Information:

Segment	Length	Segment	Length	Segment	Length	Segment	Length
0010	0215						

Primary Route  
Interchange Exit  
Number

Secondary Route  
Interchange Exit  
Number



Last Date Modified:

Jan 30, 2024

County: 53

# RMS Interchange Information

Bureau of Maintenance & Operations  
Asset Management Division

Print Form



Interchange Number: 9203

Interchange Name: I-81 REST AREA

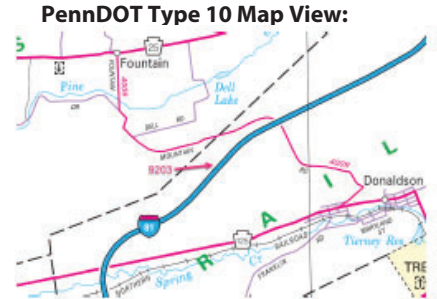
Intersecting SR's: I-81 American Legion Mem Hw

Ramp Segment Number and Ramp Segment Length Information:

Segment	Length	Segment	Length	Segment	Length	Segment	Length
0010	0829						

Primary Route Interchange Exit Number

Secondary Route Interchange Exit Number



Last Date Modified: Jan 30, 2024

County: 53

# RMS Interchange Information

Print Form

Interchange Number: 9204

Bureau of Maintenance & Operations  
Asset Management Division



Interchange Name: I-81 NB MAHANOY WEIGH STATION

Intersecting SR's: I-81 American Legion Mem Hw

Ramp Segment Number and Ramp Segment Length Information:

Segment	Length	Segment	Length	Segment	Length	Segment	Length
0010	1672						

Primary Route Interchange Exit Number

Secondary Route Interchange Exit Number

PennDOT Type 10 Map View:



Feedback

200 ft 50 m  
© 2023 TomTom, © Vexxel Imaging

© 2024 Microsoft

Last Date Modified:

Jan 31, 2024

County: 53

# RMS Interchange Information

Bureau of Maintenance & Operations  
Asset Management Division

Print Form



Interchange Number: 9205

Interchange Name: I-81 SB MAHANOY WEIGH STATION

Intersecting SR's: I-81 American Legion Mem Hw

Ramp Segment Number and Ramp Segment Length Information:

Segment	Length	Segment	Length	Segment	Length	Segment	Length
0010	1576						

Primary Route Interchange Exit Number

Secondary Route Interchange Exit Number

PennDOT Type 10 Map View:



Last Date Modified:

Jan 31, 2024



County: 53

# RMS Interchange Information

Print Form

Interchange Number: 9401

Bureau of Maintenance & Operations  
Asset Management Division



Interchange Name: MARKET ST JUGHANDLE

Intersecting SR's: PA 61 & PA 443 Market St

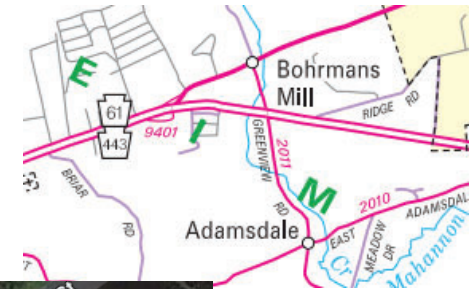
Ramp Segment Number and Ramp Segment Length Information:

Segment	Length	Segment	Length	Segment	Length	Segment	Length
0500	0405						

Primary Route Interchange Exit Number

Secondary Route Interchange Exit Number

PennDOT Type 10 Map View:



Last Date Modified: Jan 31, 2024

County: 53

# RMS Interchange Information

Print Form

Interchange Number: 9403

Bureau of Maintenance & Operations  
Asset Management Division



Interchange Name: POTTSVILLE ST JUGHANDLE

Intersecting SR's: PA 61 & PA 183 Pottsville St

Ramp Segment Number and Ramp Segment Length Information:

Segment	Length	Segment	Length	Segment	Length	Segment	Length
0010	0350						

Primary Route  
Interchange Exit  
Number

Secondary Route  
Interchange Exit  
Number

PennDOT Type 10 Map View:



Last Date Modified:

Jan 31, 2024

County: 53

# RMS Interchange Information

Print Form

Interchange Number: 9407

Bureau of Maintenance & Operations  
Asset Management Division



Interchange Name: ROLLING MILL RD JUGHANDLE

Intersecting SR's: PA 61 & T715 Rolling Mill Rd

Ramp Segment Number and Ramp Segment Length Information:

Segment	Length	Segment	Length	Segment	Length	Segment	Length
0500	0439						

Primary Route  
Interchange Exit  
Number

Secondary Route  
Interchange Exit  
Number

PennDOT Type 10 Map View:



Feedback

100 ft 30 m  
© 2023 TomTom, © Vexcel Imaging

© 2024 Microsoft

Last Date Modified:

Jan 31, 2024

County: **53**

# RMS Interchange Information

Bureau of Maintenance & Operations  
Asset Management Division

Print Form



Interchange Number: **9411**

Interchange Name: **SEVEN STARS RD JUGHANDLE**

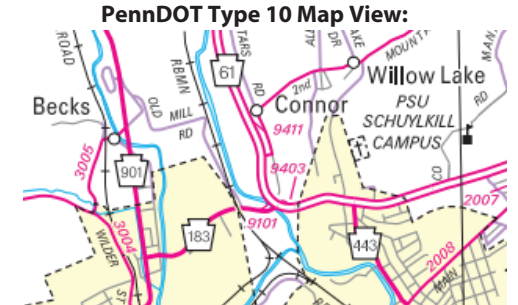
Intersecting SR's: **PA 61 & SR 2006 Seven Stars Rd**

Ramp Segment Number and Ramp Segment Length Information:

Segment	Length	Segment	Length	Segment	Length	Segment	Length
<b>0750</b>	<b>0175</b>						

Primary Route Interchange Exit Number

Secondary Route Interchange Exit Number



Last Date Modified:

Jan 31, 2024

County: 53

# RMS Interchange Information

Print Form

Interchange Number: 9413

Bureau of Maintenance & Operations  
Asset Management Division



Interchange Name: PA 61 JUGHANDLE RD

Intersecting SR's: PA 61

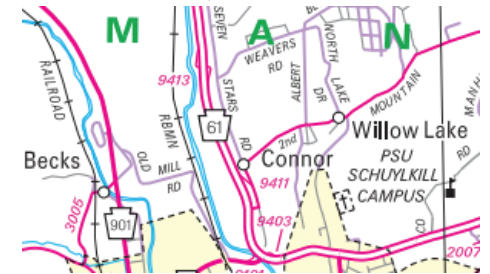
Ramp Segment Number and Ramp Segment Length Information:

Segment	Length	Segment	Length	Segment	Length	Segment	Length
0010	0406						
0500	0466						

Primary Route Interchange Exit Number

Secondary Route Interchange Exit Number

PennDOT Type 10 Map View:



Last Date Modified: Feb 1, 2024

County: 53

# RMS Interchange Information

Print Form

Interchange Number: 9415

Bureau of Maintenance & Operations  
Asset Management Division



Interchange Name: MOUNT CARBON JUGHANDLE RD

Intersecting SR's: PA 61 & SR 2015

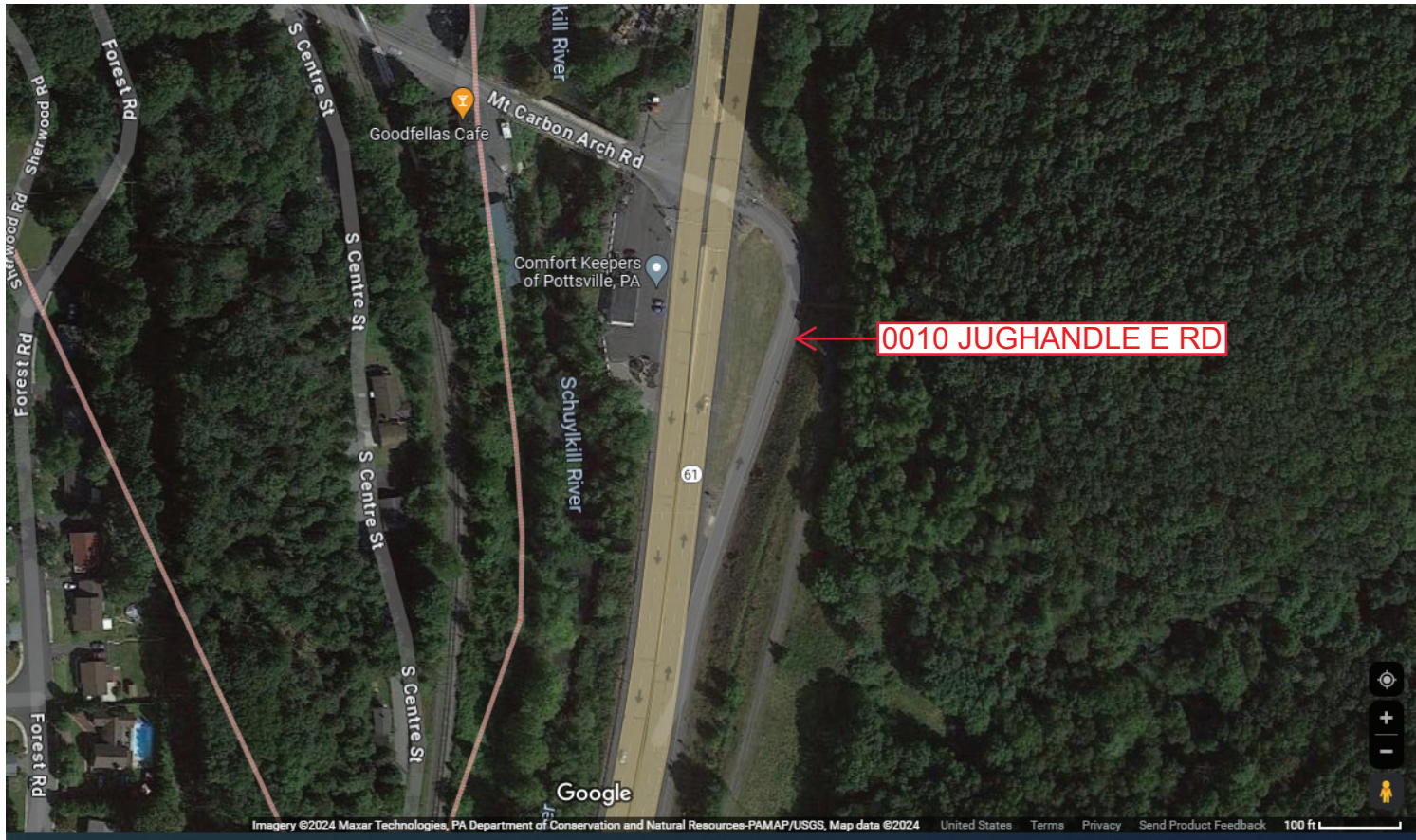
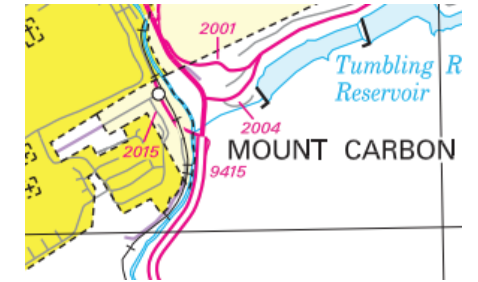
Ramp Segment Number and Ramp Segment Length Information:

Segment	Length	Segment	Length	Segment	Length	Segment	Length
0010	0508						

Primary Route  
Interchange Exit  
Number

Secondary Route  
Interchange Exit  
Number

PennDOT Type 10 Map View:



Last Date Modified:

Feb 1, 2024