

County: 15

# RMS Interchange Information

Print Form

Interchange Number: 8001

Bureau of Maintenance & Operations  
Asset Management Division



Interchange Name: NOTTINGHAM INT

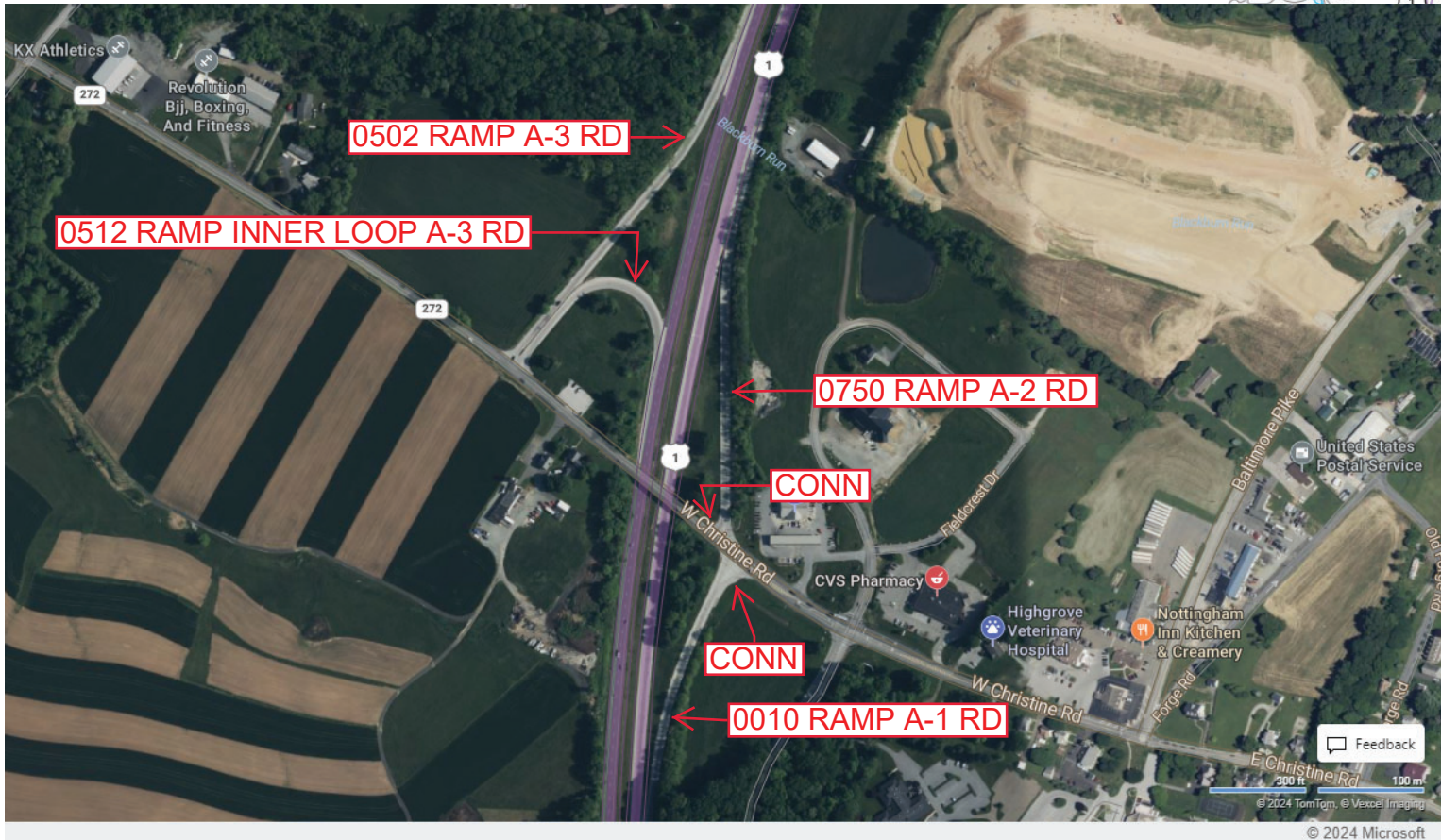
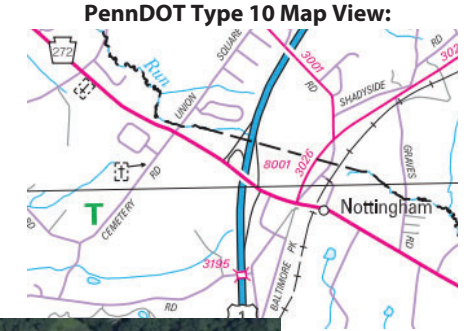
Intersecting SR's: US 1 Kennet Oxford Bp & PA 272 Christine Rd West

Ramp Segment Number and Ramp Segment Length Information:

Segment	Length	Segment	Length	Segment	Length	Segment	Length
0010	0880						
0502	1100						
0512	0638						
0750	0925						

Primary Route Interchange Exit Number

Secondary Route Interchange Exit Number



Last Date Modified: Mar 20, 2024

County: 15

# RMS Interchange Information

Print Form

Interchange Number: 8002

Bureau of Maintenance & Operations  
Asset Management Division



Interchange Name: CHESTER COUNTY AIRPORT

Intersecting SR's: US 30 Coatesville, Downingtown Bp & SR 3097 Airport Rd

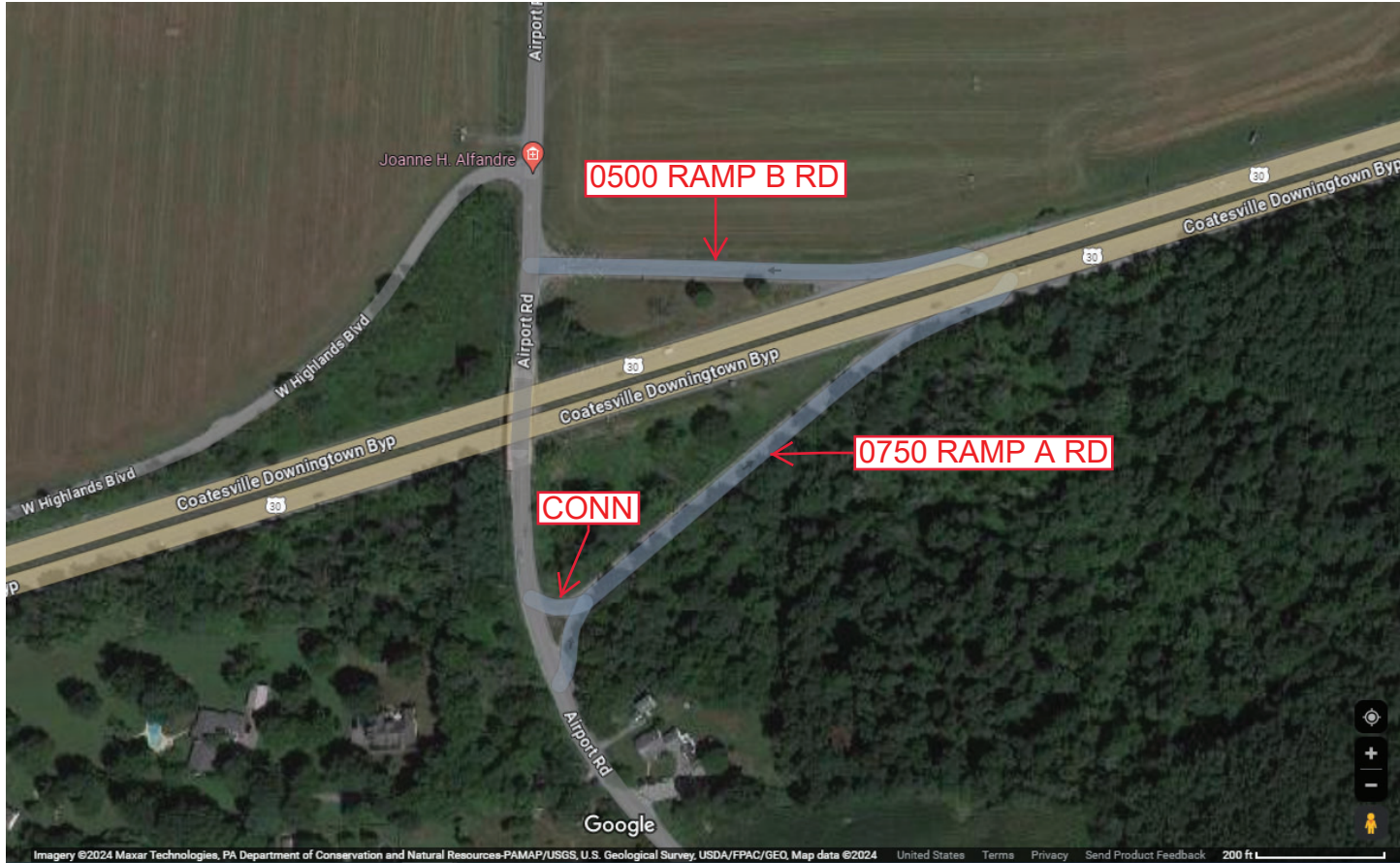
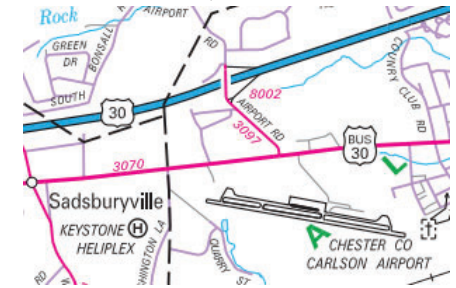
Ramp Segment Number and Ramp Segment Length Information:

Segment	Length	Segment	Length	Segment	Length	Segment	Length
0500	0460						
0750	0720						

Primary Route  
Interchange Exit  
Number

Secondary Route  
Interchange Exit  
Number

PennDOT Type 10 Map View:



Last Date Modified:

Mar 20, 2024



County: 15

# RMS Interchange Information

Print Form

Interchange Number: 8003

Bureau of Maintenance & Operations  
Asset Management Division



Interchange Name: LANCASTER PK & OXFORD BP

Intersecting SR's: US 1 Kennett Oxford Bp & PA 472 Lancaster Pk

Ramp Segment Number and Ramp Segment Length Information:

Segment	Length	Segment	Length	Segment	Length	Segment	Length
0010	1080						
0250	0810						
0500	0812						
0750	0778						

Primary Route Interchange Exit Number

Secondary Route Interchange Exit Number

PennDOT Type 10 Map View:



Feedback

300 ft 100 m  
© 2024 TomTom, © Vexcel Imaging  
© 2024 Microsoft

Last Date Modified:

Mar 21, 2024



County: 15

# RMS Interchange Information

Bureau of Maintenance & Operations  
Asset Management Division

Print Form



Interchange Number: 8004

Interchange Name: US 30 & PA 82 MARNOR RD

Intersecting SR's: US 30 Coatesville Downingtown Bp & PA 82 Manor Rd

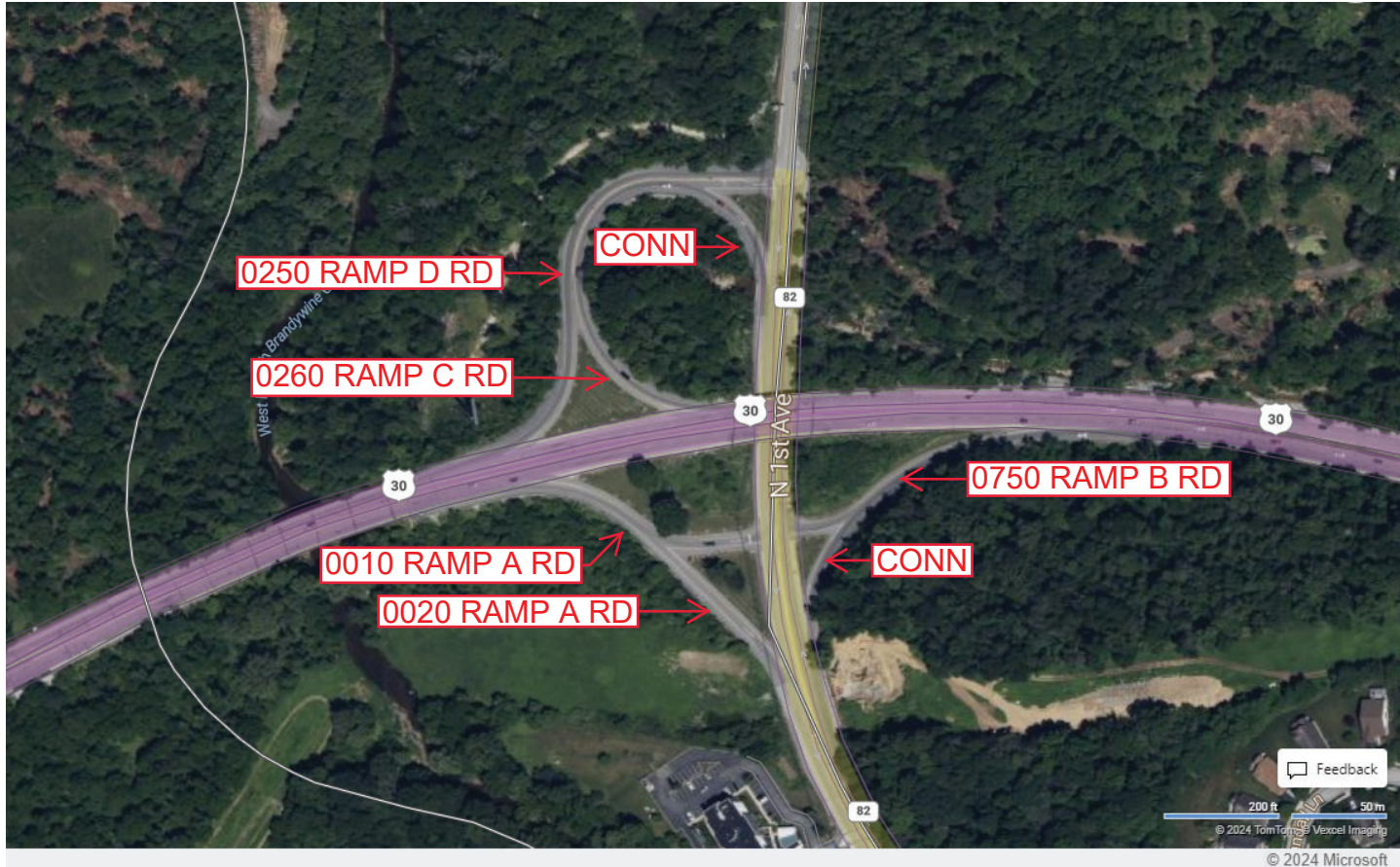
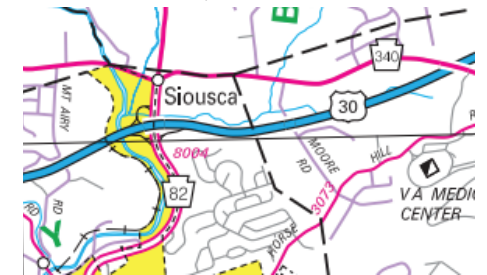
Ramp Segment Number and Ramp Segment Length Information:

Segment	Length	Segment	Length	Segment	Length	Segment	Length
0010	0430						
0020	0130						
0250	0765						
0260	0739						
0750	0420						

Primary Route Interchange Exit Number

Secondary Route Interchange Exit Number

PennDOT Type 10 Map View:



Last Date Modified:

Mar 22, 2024



County: 15

# RMS Interchange Information

Print Form

Interchange Number: 8005

Bureau of Maintenance & Operations  
Asset Management Division



Interchange Name: US 1 & PA 10 INT

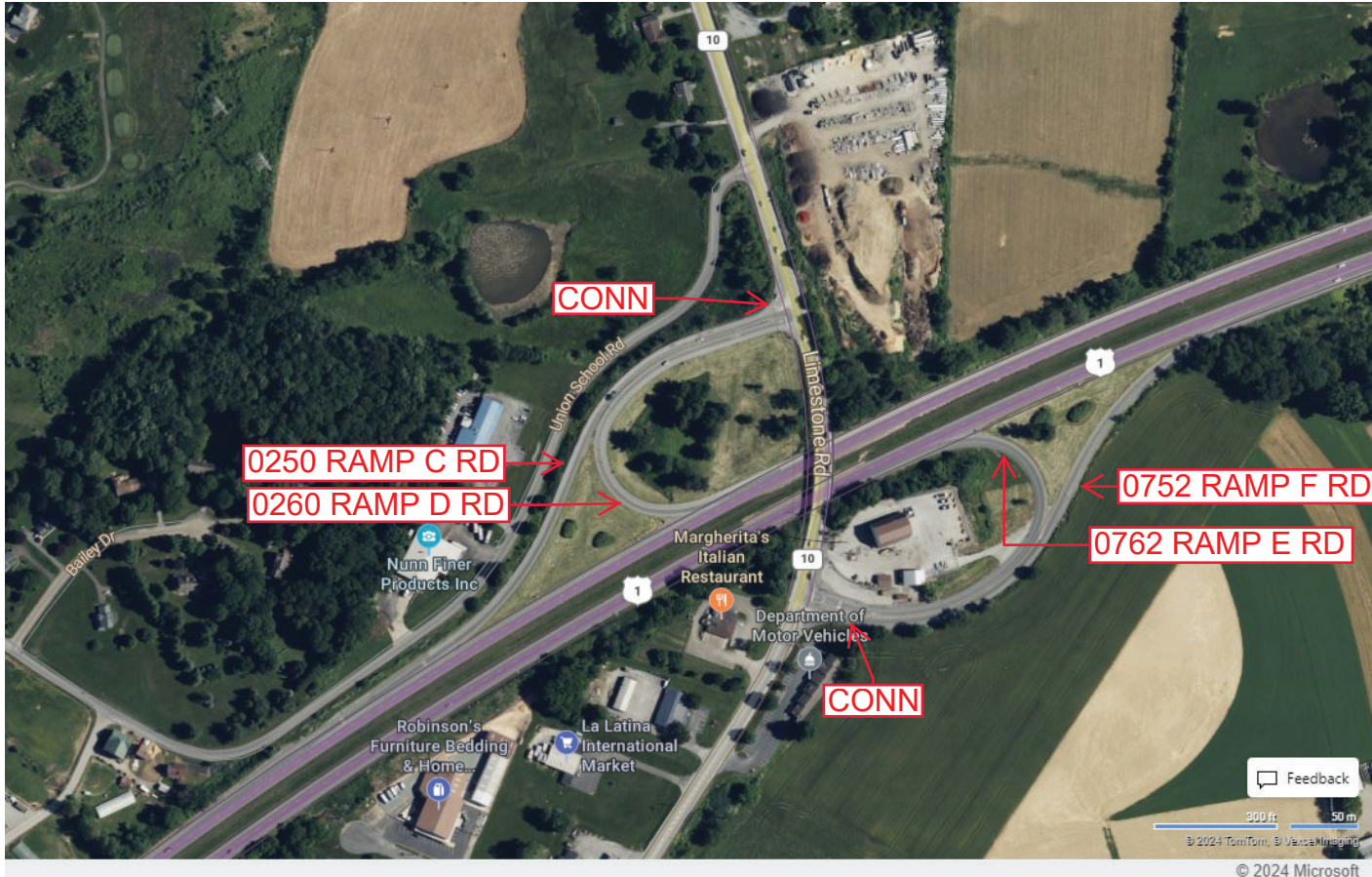
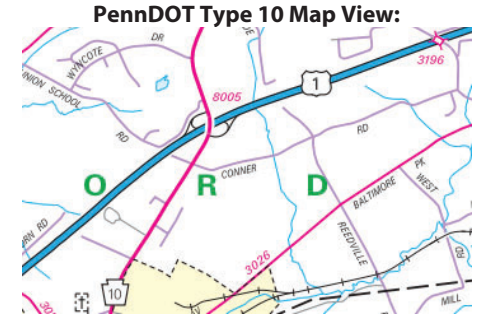
Intersecting SR's: US 1 Kennett Oxford Rd & PA 10 Limestone Rd

Ramp Segment Number and Ramp Segment Length Information:

Segment	Length	Segment	Length	Segment	Length	Segment	Length
0250	1231						
0260	0878						
0752	1346						
0762	0962						

Primary Route Interchange Exit Number

Secondary Route Interchange Exit Number



Last Date Modified: Mar 22, 2024



County: 15

# RMS Interchange Information

Print Form

Interchange Number: 8006

Bureau of Maintenance & Operations  
Asset Management Division



Interchange Name: VETERANS HOSITAL INT

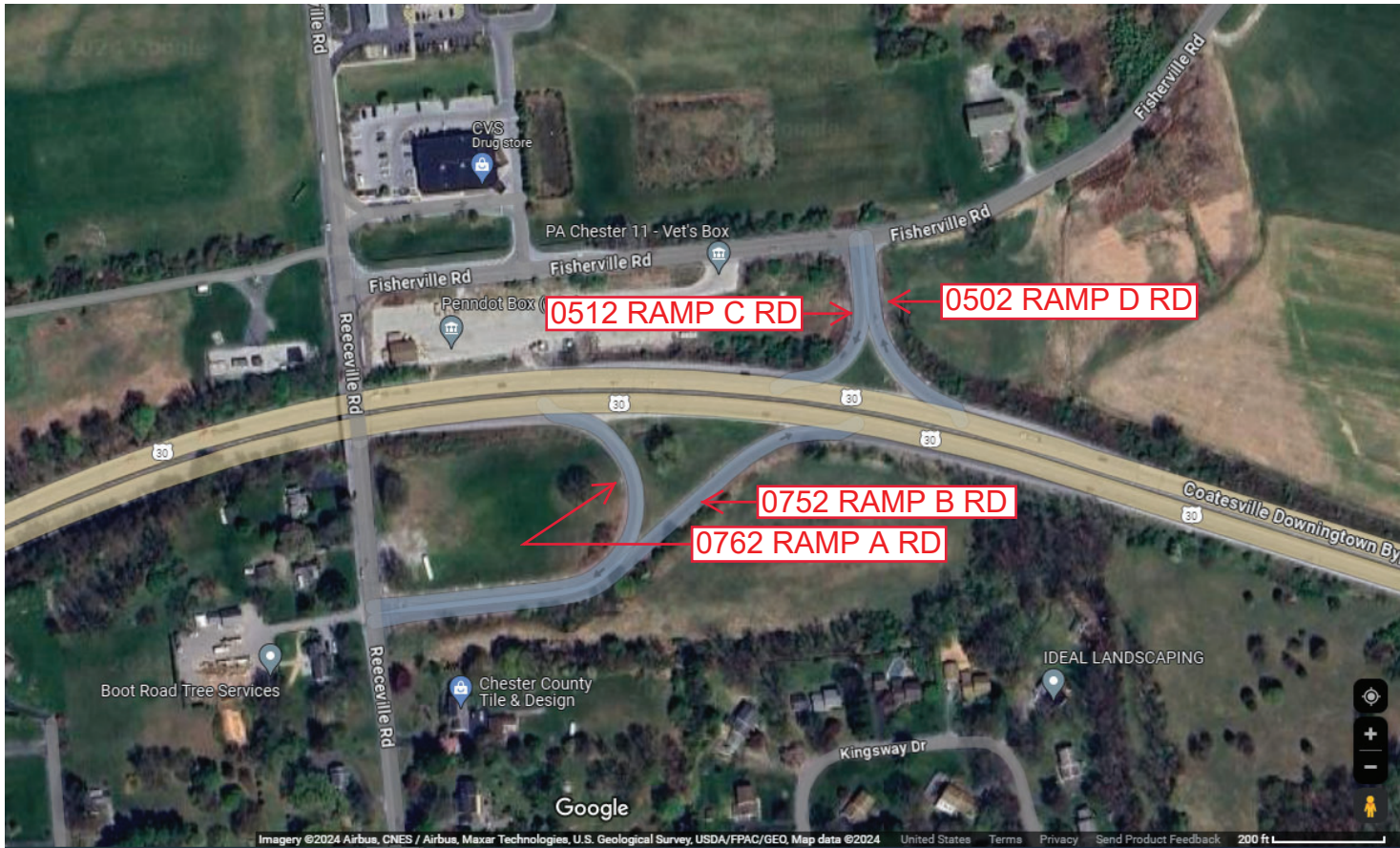
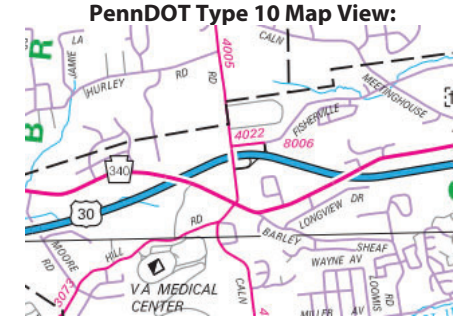
Intersecting SR's: US 30, SR 4005 Reeceville Rd & SR 4022 Fisherville Rd

Ramp Segment Number and Ramp Segment Length Information:

Segment	Length	Segment	Length	Segment	Length	Segment	Length
0502	0275						
0512	0260						
0752	0840						
0762	0700						

Primary Route Interchange Exit Number

Secondary Route Interchange Exit Number



Last Date Modified:

Mar 22, 2024



County: 15

# RMS Interchange Information

Print Form

Interchange Number: 8007

Bureau of Maintenance & Operations  
Asset Management Division



Interchange Name: FORRESTVILLE INT

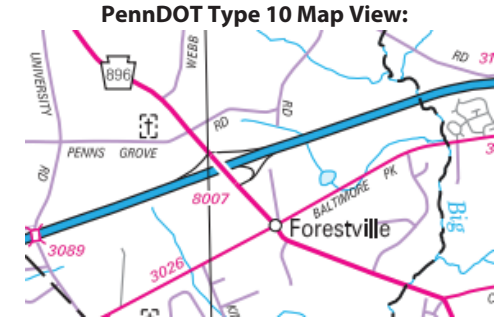
Intersecting SR's: US 1 Kennett Oxford Bp & PA 896 Newark Rd

Ramp Segment Number and Ramp Segment Length Information:

Segment	Length	Segment	Length	Segment	Length	Segment	Length
0250	0572						
0500	0748						
0750	0898						
0760	0624						

Primary Route Interchange Exit Number

Secondary Route Interchange Exit Number



Last Date Modified: Mar 22, 2024



County: 15

# RMS Interchange Information

Print Form

Interchange Number: 8008

Bureau of Maintenance & Operations  
Asset Management Division



Interchange Name: BONDSVILLE INT

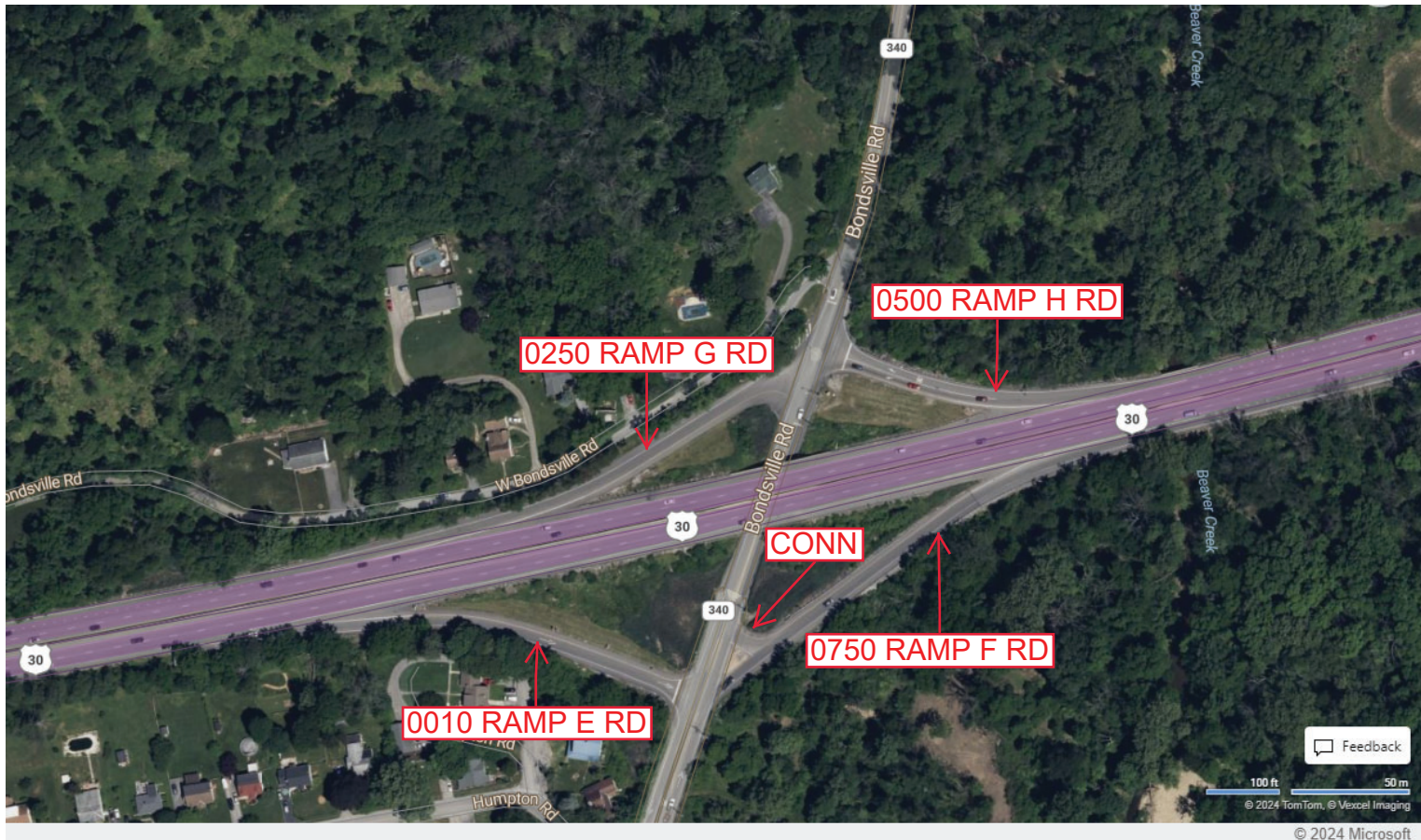
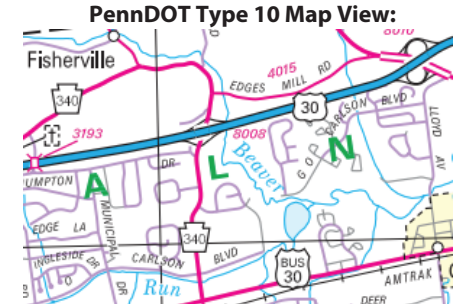
Intersecting SR's: US 30 Coatesville/Downingtown Bp & PA 340 Bondsville

Ramp Segment Number and Ramp Segment Length Information:

Segment	Length	Segment	Length	Segment	Length	Segment	Length
0010	0400						
0250	0386						
0500	0230						
0750	0454						

Primary Route Interchange Exit Number

Secondary Route Interchange Exit Number



Feedback

100 ft 50 m  
© 2024 TomTom, © Vexcel Imaging

© 2024 Microsoft

Last Date Modified:

Mar 26, 2024



County: 15

# RMS Interchange Information

Bureau of Maintenance & Operations  
Asset Management Division

Print Form



Interchange Number: 8009

Interchange Name: JENNERSVILLE INT

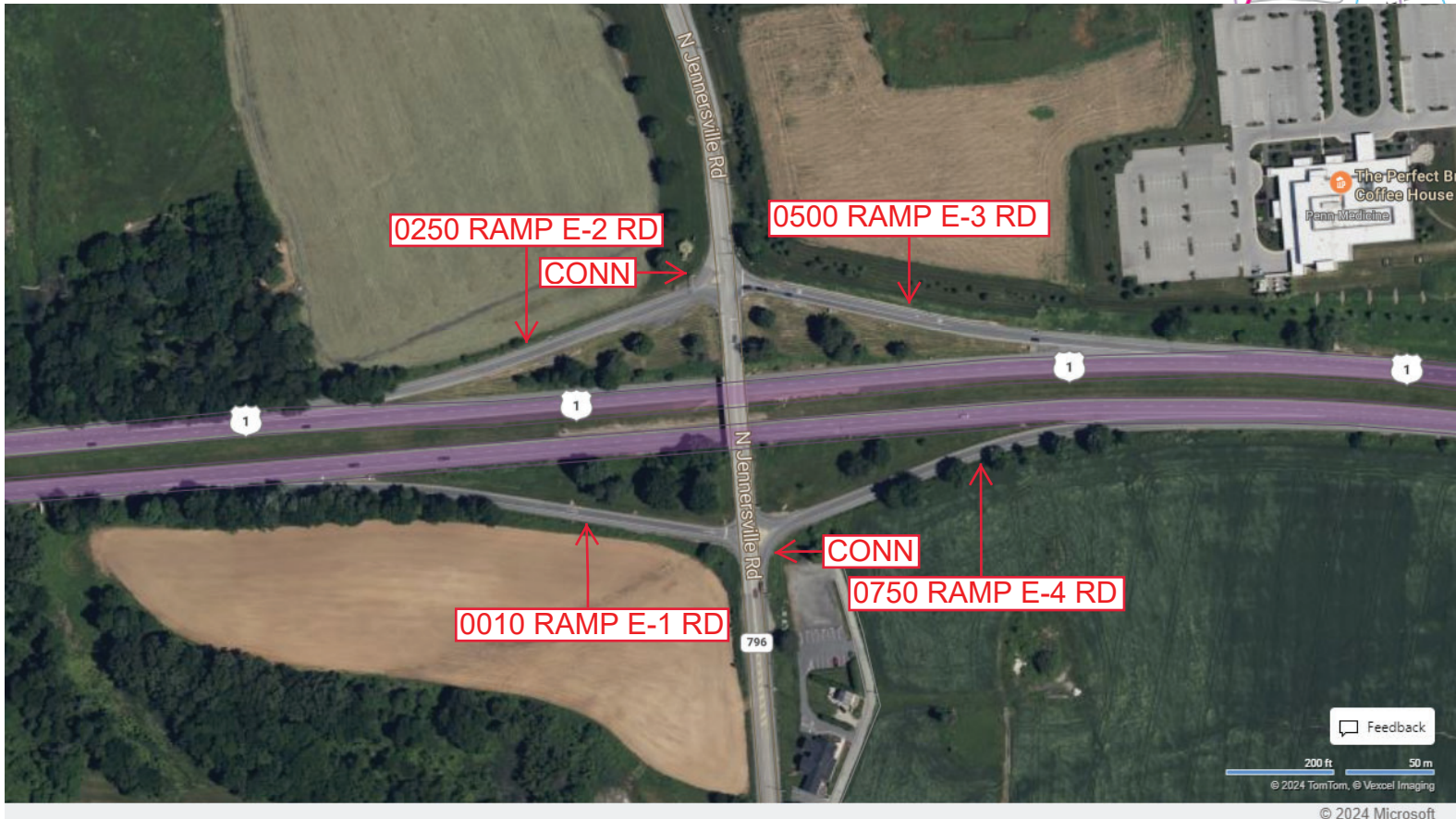
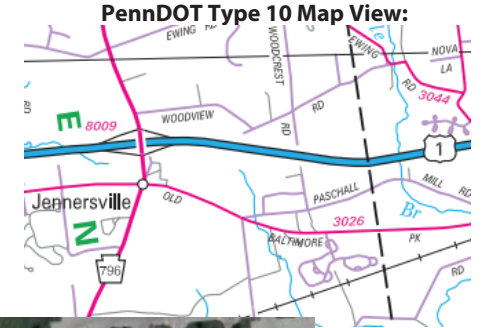
Intersecting SR's: US Kennett Oxford Bp & PA 796 Jennersville Rd

Ramp Segment Number and Ramp Segment Length Information:

Segment	Length	Segment	Length	Segment	Length	Segment	Length
0010	0775						
0250	0686						
0500	0619						
0750	0662						

Primary Route Interchange Exit Number

Secondary Route Interchange Exit Number



Last Date Modified:

Mar 26, 2024

County: 15

# RMS Interchange Information

Print Form

Interchange Number: **8010**

Bureau of Maintenance & Operations  
Asset Management Division



Interchange Name: **HORSESHOE PIKE INT**

Intersecting SR's: **US 30 Coatesville Downingtown Bp & US 322 Horseshoe Pk**

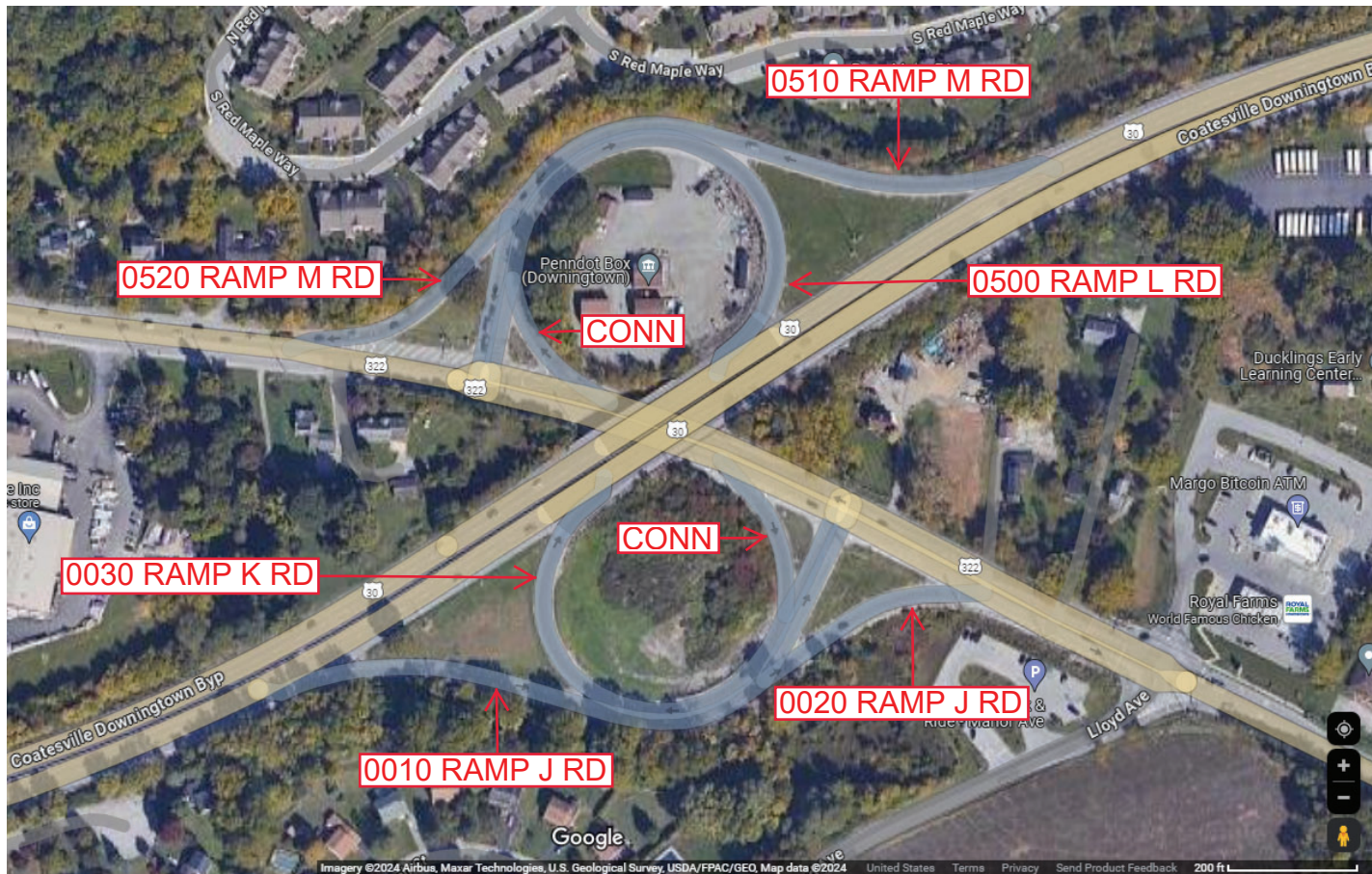
Ramp Segment Number and Ramp Segment Length Information:

Segment	Length	Segment	Length	Segment	Length	Segment	Length
<b>0010</b>	<b>0925</b>	<b>0520</b>	<b>0210</b>				
<b>0020</b>	<b>0230</b>						
<b>0030</b>	<b>0800</b>						
<b>0500</b>	<b>0895</b>						
<b>0510</b>	<b>1013</b>						

Primary Route  
Interchange Exit  
Number

Secondary Route  
Interchange Exit  
Number

PennDOT Type 10 Map View:



Last Date Modified:

Mar 26, 2024



County: 15

# RMS Interchange Information

Print Form

Interchange Number: 8011

Bureau of Maintenance & Operations  
Asset Management Division



Interchange Name: WEST GROVE INT

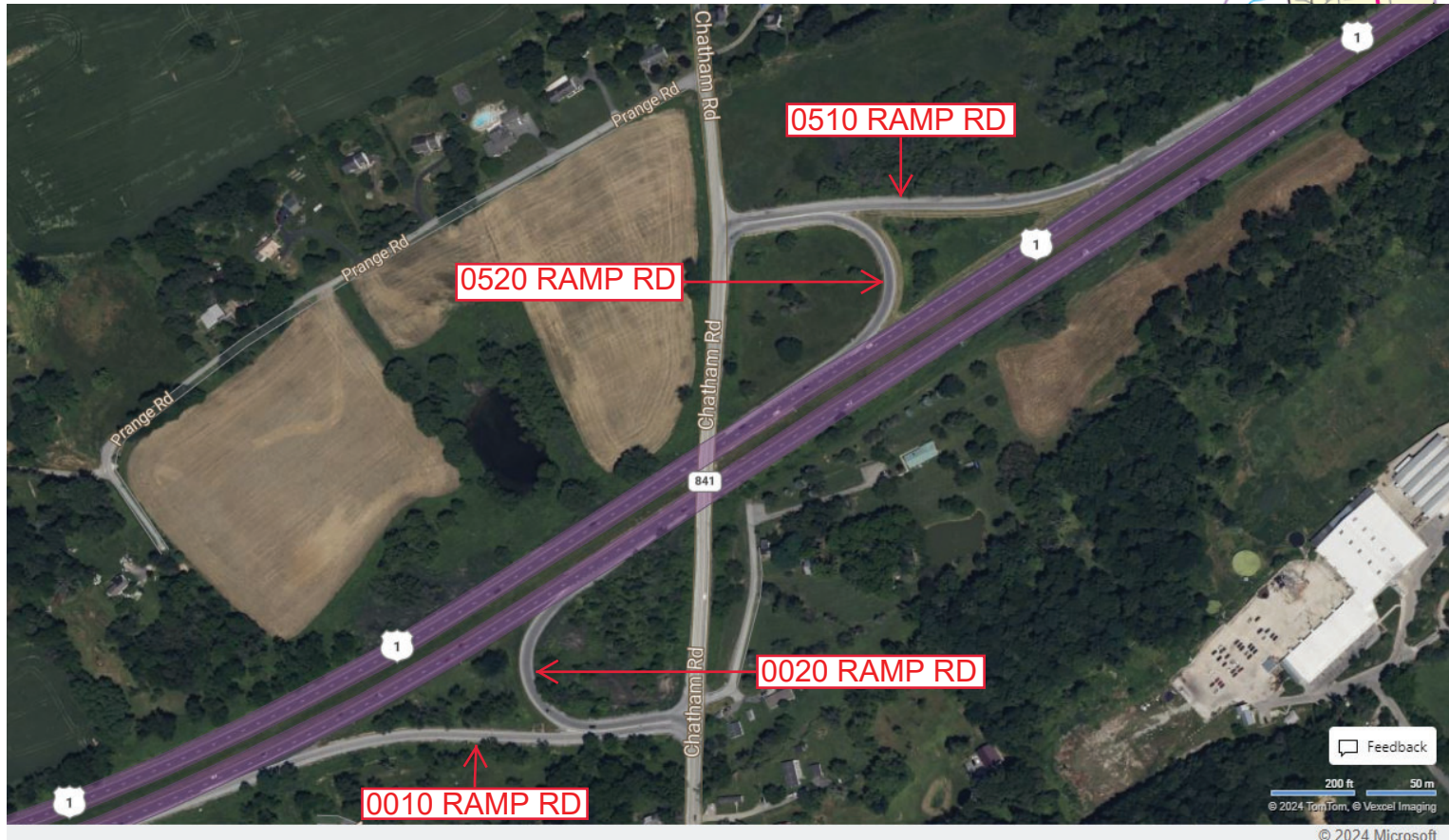
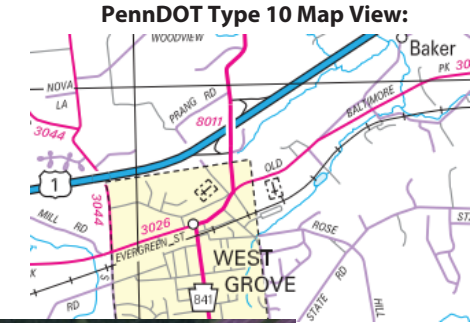
Intersecting SR's: US 1 Kenneth Oxford Bp & PA 841 Chatham Rd

Ramp Segment Number and Ramp Segment Length Information:

Segment	Length	Segment	Length	Segment	Length	Segment	Length
0010	0958						
0020	0620						
0510	0974						
0520	0630						

Primary Route Interchange Exit Number

Secondary Route Interchange Exit Number



Feedback

200 ft 50 m

© 2024 Microsoft

Last Date Modified: Mar 27, 2024



County: 15

# RMS Interchange Information

Print Form

Interchange Number: 8012

Bureau of Maintenance & Operations  
Asset Management Division



Interchange Name: MARSH CREEK NORWOOD

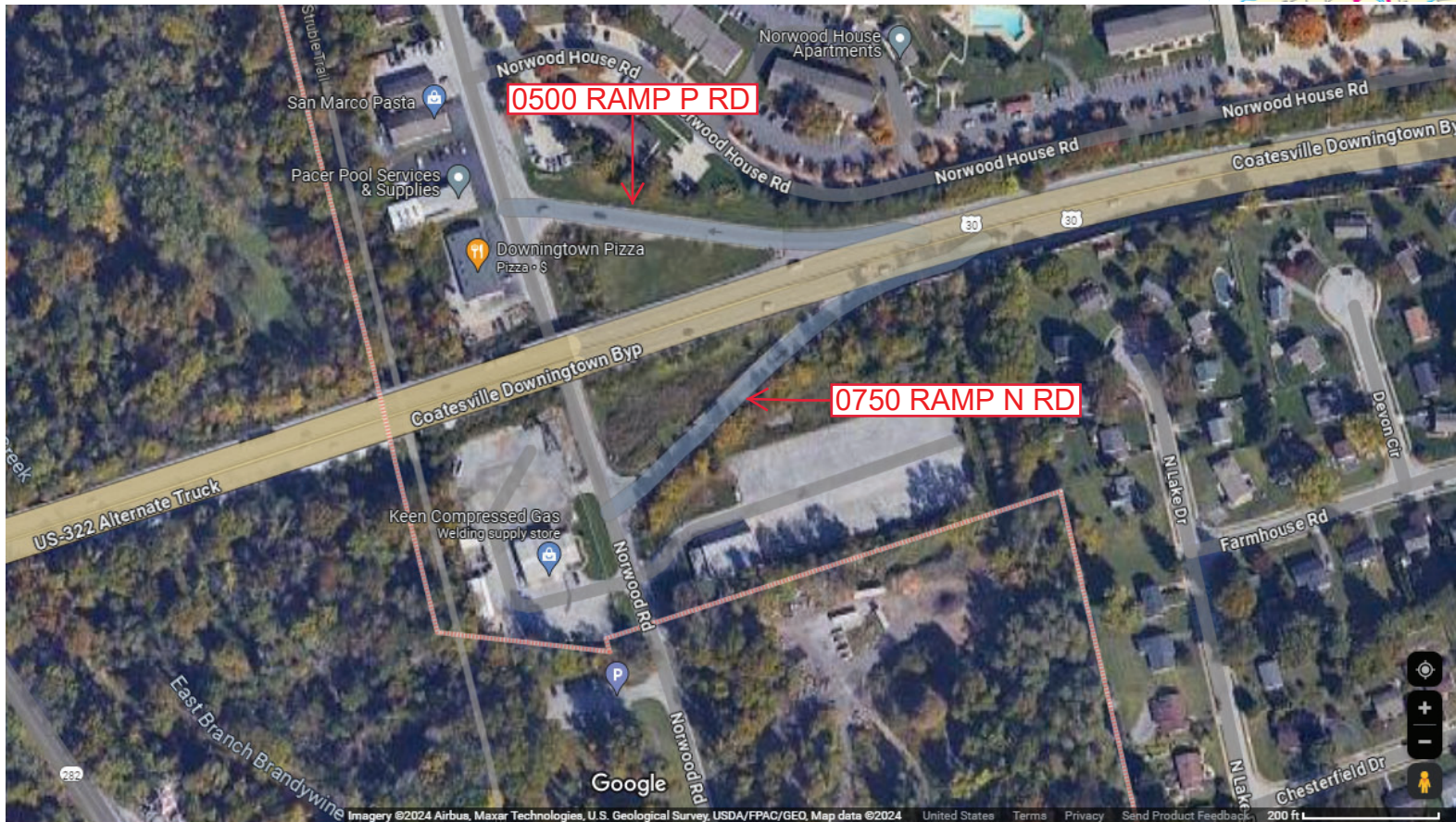
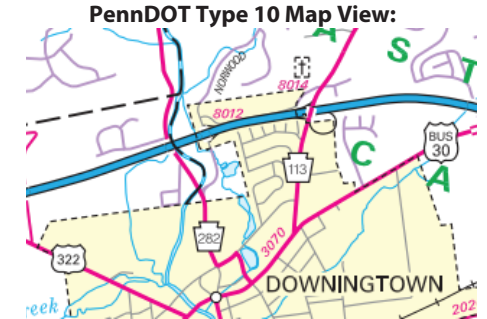
Intersecting SR's: US 30 Coatesville Downingtown Bp & Norwood Rd

Ramp Segment Number and Ramp Segment Length Information:

Segment	Length	Segment	Length	Segment	Length	Segment	Length
0500	0390						
0750	0424						

Primary Route Interchange Exit Number

Secondary Route Interchange Exit Number



Last Date Modified: Mar 27, 2024



County: 15

# RMS Interchange Information

Print Form

Interchange Number: 8013

Bureau of Maintenance & Operations  
Asset Management Division



Interchange Name: BAKER INT

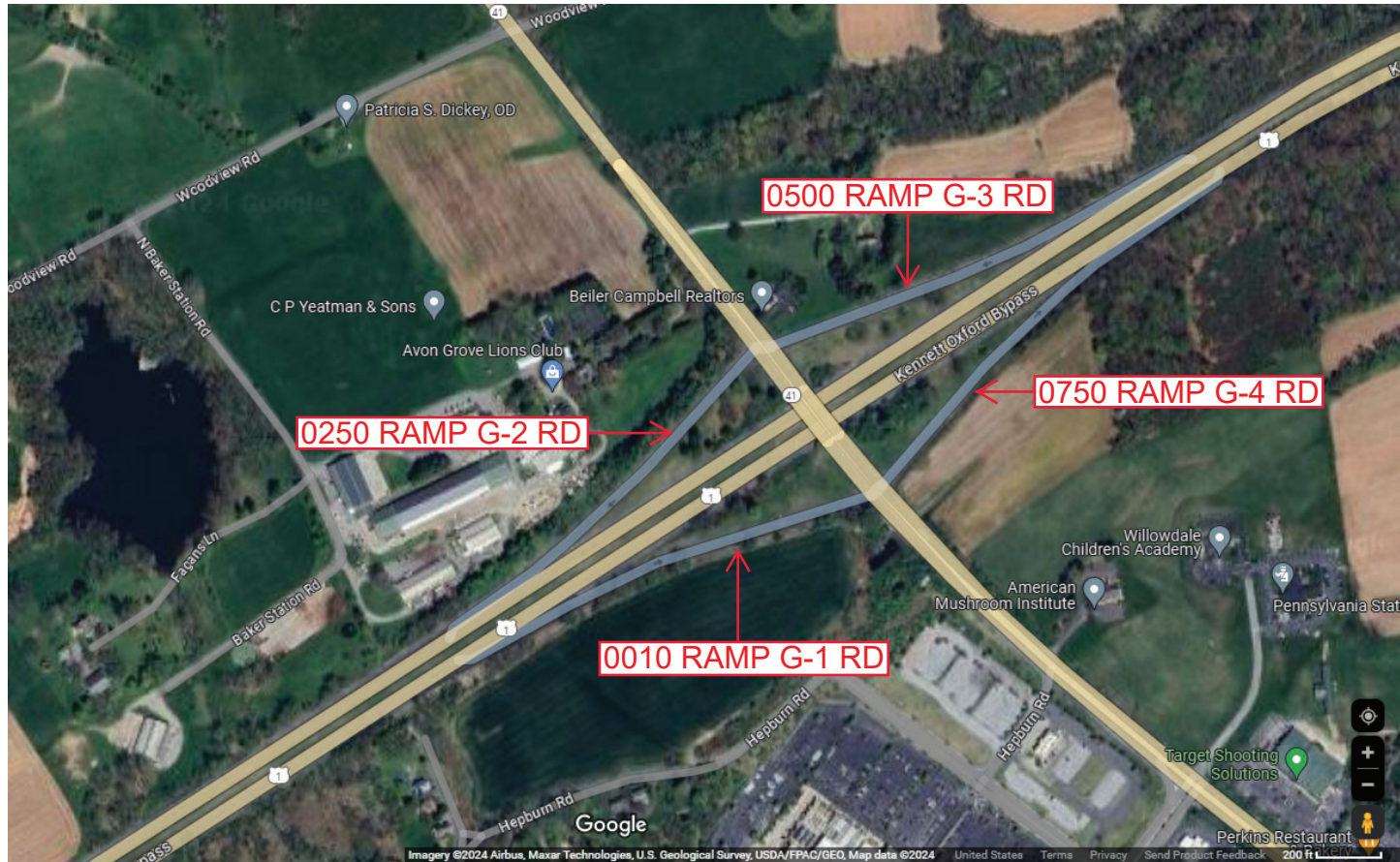
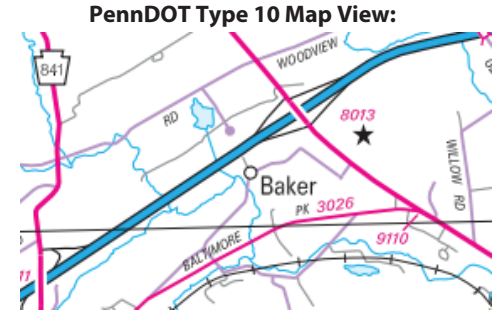
Intersecting SR's: US 1 Kennett Oxford Bp & PA 41 Gap Newport Pk

Ramp Segment Number and Ramp Segment Length Information:

Segment	Length	Segment	Length	Segment	Length	Segment	Length
0010	0950						
0250	0900						
0500	0998						
0750	0980						

Primary Route Interchange Exit Number

Secondary Route Interchange Exit Number



Last Date Modified: Mar 27, 2024



County: 15

# RMS Interchange Information

Print Form

Interchange Number: 8014

Bureau of Maintenance & Operations  
Asset Management Division



Interchange Name: UWCHLAN AV INT

Intersecting SR's: US 30 Coatesville Downingtown Bp & PA 113 Uwchlan Av

Ramp Segment Number and Ramp Segment Length Information:

Segment	Length	Segment	Length	Segment	Length	Segment	Length
0010	0432						
0250	0750						
0750	1553						

Primary Route Interchange Exit Number

Secondary Route Interchange Exit Number

PennDOT Type 10 Map View:



Last Date Modified:

Mar 27, 2024



County: 15

# RMS Interchange Information

Bureau of Maintenance & Operations  
Asset Management Division

Print Form



Interchange Number: 8015

Interchange Name: NEWARK RD INT

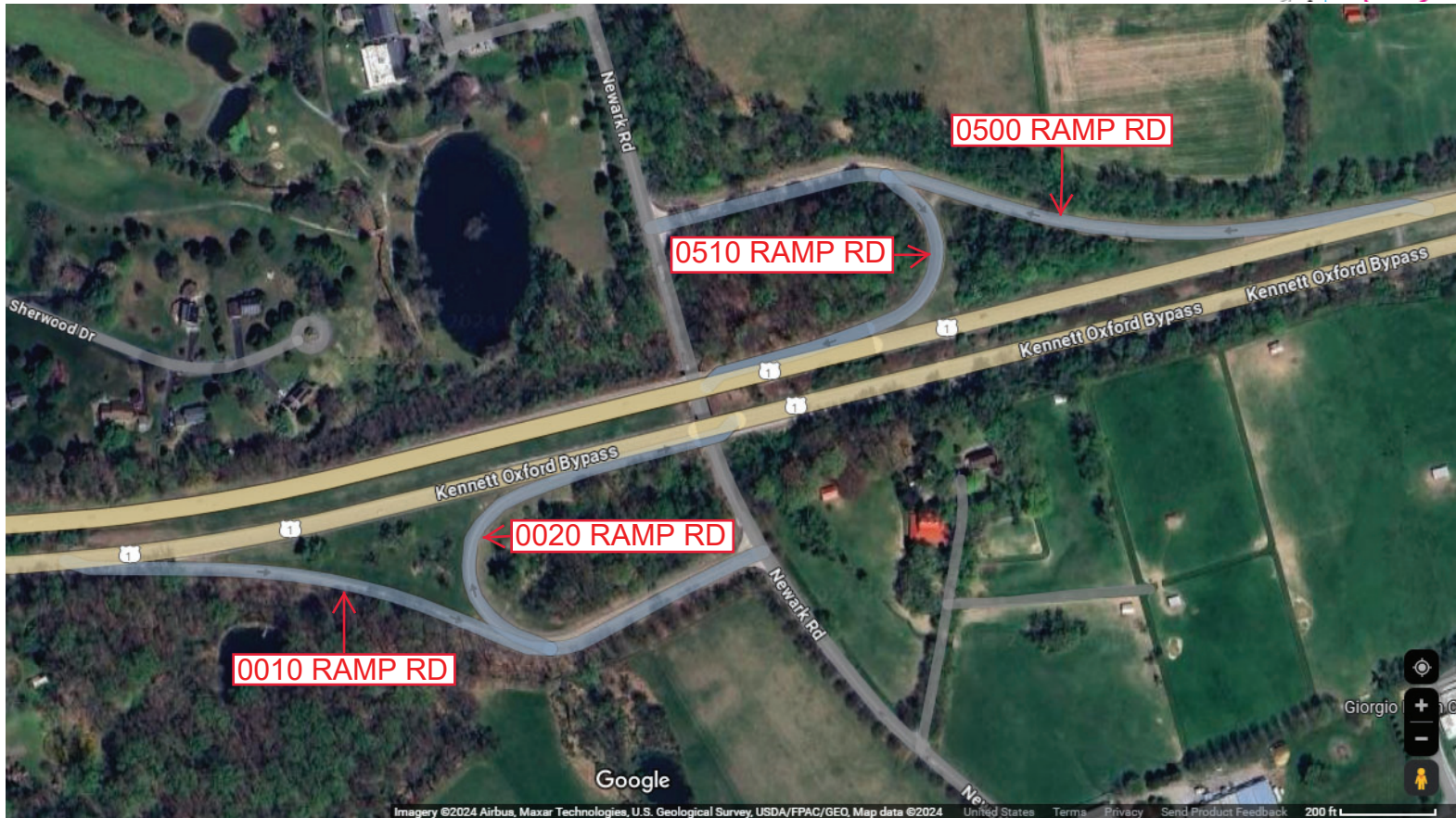
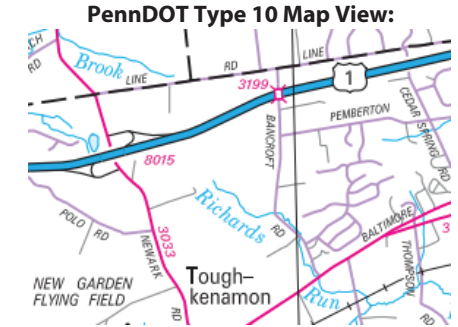
Intersecting SR's: US 1 Kennett Oxford Bp & SR 3033 Newark Rd

Ramp Segment Number and Ramp Segment Length Information:

Segment	Length	Segment	Length	Segment	Length	Segment	Length
0010	1278						
0020	0970						
0500	1335						
0510	0940						

Primary Route Interchange Exit Number

Secondary Route Interchange Exit Number



Last Date Modified: Mar 27, 2024



County: 15

# RMS Interchange Information

Print Form

Interchange Number: **8016**

Bureau of Maintenance & Operations  
Asset Management Division



Interchange Name: **POTTSTOWN BP INT**

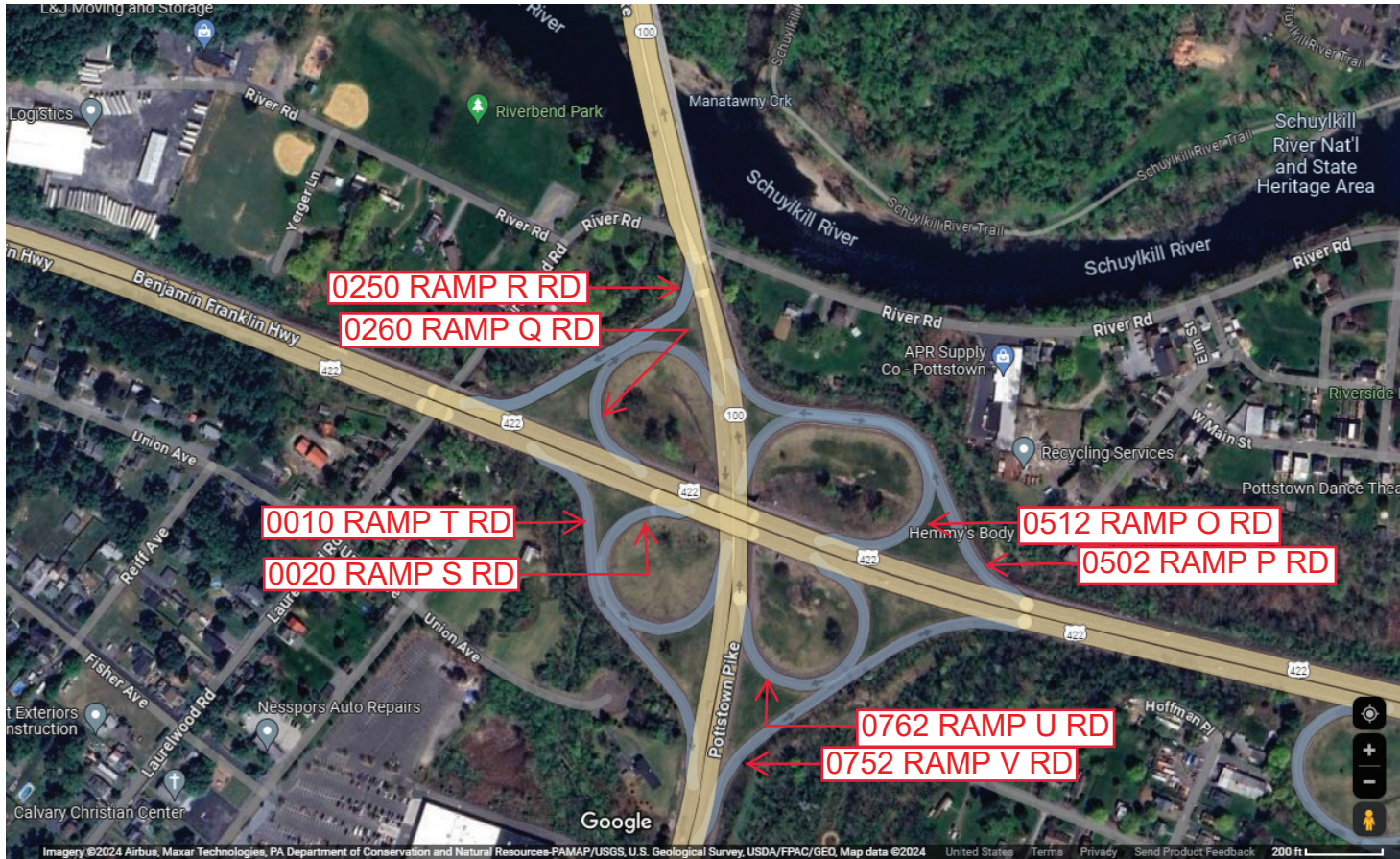
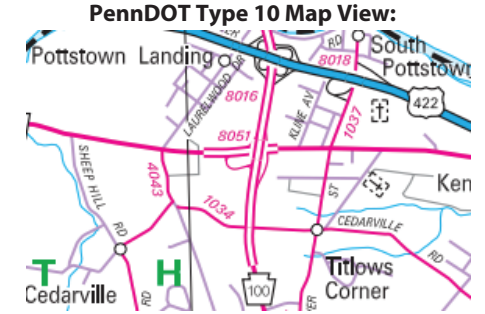
Intersecting SR's: **US 422 & PA 100**

Ramp Segment Number and Ramp Segment Length Information:

Segment	Length	Segment	Length	Segment	Length	Segment	Length
0010	0745	0512	0804				
0020	0620	0752	0760				
0250	0563	0762	0529				
0260	0506						
0502	0893						

Primary Route Interchange Exit Number

Secondary Route Interchange Exit Number



Last Date Modified:

Mar 28, 2024



County: 15

# RMS Interchange Information

Bureau of Maintenance & Operations  
Asset Management Division

Print Form



Interchange Number: 8017

Interchange Name: KENNETT SQUARE INT

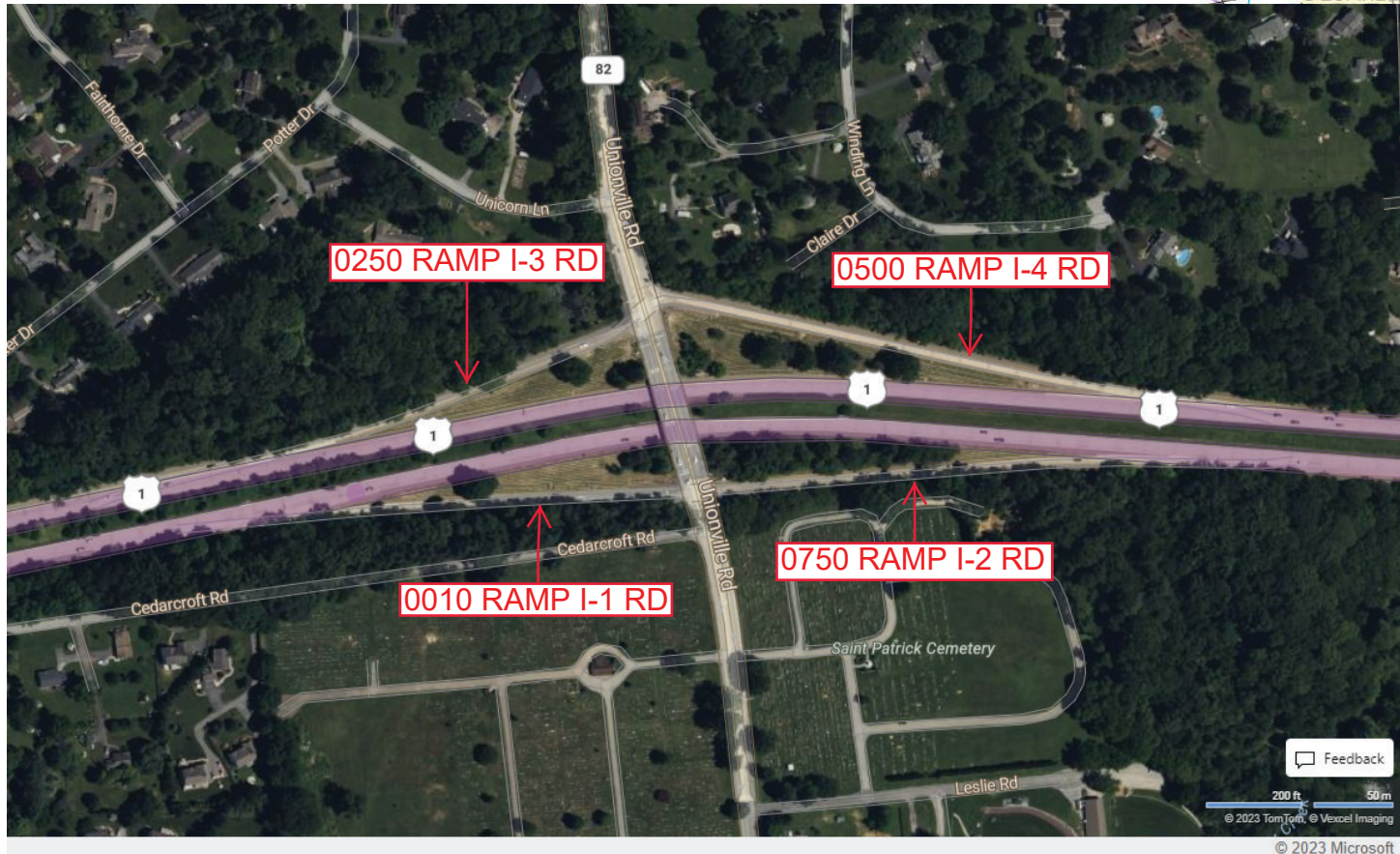
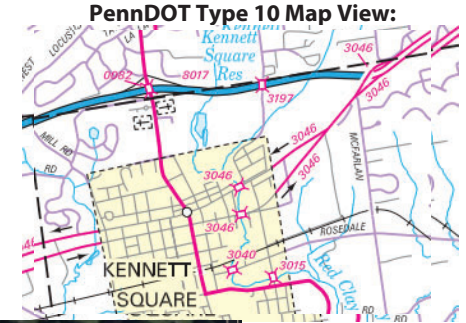
Intersecting SR's: US 1 Kennett Oxford Bp & T 503 Unionville Rd

Ramp Segment Number and Ramp Segment Length Information:

Segment	Length	Segment	Length	Segment	Length	Segment	Length
0010	0653						
0250	0609						
0500	0862						
0750	0759						

Primary Route Interchange Exit Number

Secondary Route Interchange Exit Number



Last Date Modified:

Jan 7, 2025



County: 15

# RMS Interchange Information

Print Form

Interchange Number: 8018

Bureau of Maintenance & Operations  
Asset Management Division



Interchange Name: HANOVER STREET INT

Intersecting SR's: US 422 Pottstown Bp & SR 1037 Hanover St

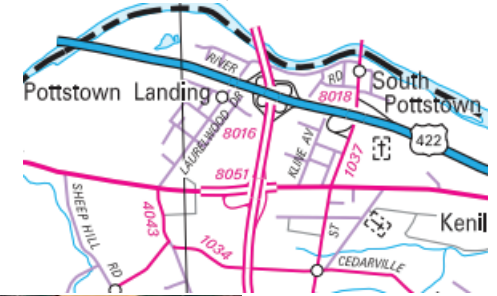
Ramp Segment Number and Ramp Segment Length Information:

Segment	Length	Segment	Length	Segment	Length	Segment	Length
0010	0680						
0500	0748						

Primary Route Interchange Exit Number

Secondary Route Interchange Exit Number

PennDOT Type 10 Map View:



0500 RAMP M RD

0010 RAMP N RD

CONN

Last Date Modified:

Mar 28, 2024



County: 15

# RMS Interchange Information

Print Form

Bureau of Maintenance & Operations  
Asset Management Division



Interchange Number: 8019

Interchange Name: WEST CHESTER UNIVERSITY INT

Intersecting SR's: US 202 West Chester Bp/Wilmington Pk & SR 2003 High St

Ramp Segment Number and Ramp Segment Length Information:

Segment	Length	Segment	Length	Segment	Length	Segment	Length
0260	1380						
0750	0320						

Primary Route  
Interchange Exit  
Number

Secondary Route  
Interchange Exit  
Number

PennDOT Type 10 Map View:



Last Date Modified:

Feb 11, 2025



County: 15

# RMS Interchange Information

Print Form

Interchange Number: 8020

Bureau of Maintenance & Operations  
Asset Management Division



Interchange Name: KEIM STREET INT

Intersecting SR's: US 202 Pottstown Bp & T501 Keim St

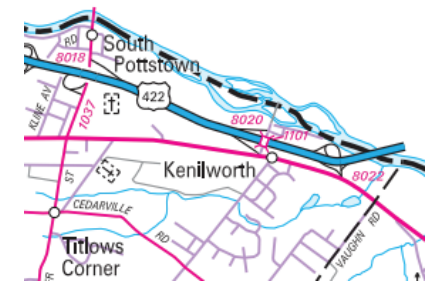
Ramp Segment Number and Ramp Segment Length Information:

Segment	Length	Segment	Length	Segment	Length	Segment	Length
0010	0716						
0250	0784						

Primary Route  
Interchange Exit  
Number

Secondary Route  
Interchange Exit  
Number

PennDOT Type 10 Map View:



Last Date Modified:

Mar 28, 2024



County: 15

# RMS Interchange Information

Print Form

Interchange Number: 8021

Bureau of Maintenance & Operations  
Asset Management Division



Interchange Name: LIMESTONE ROAD INT

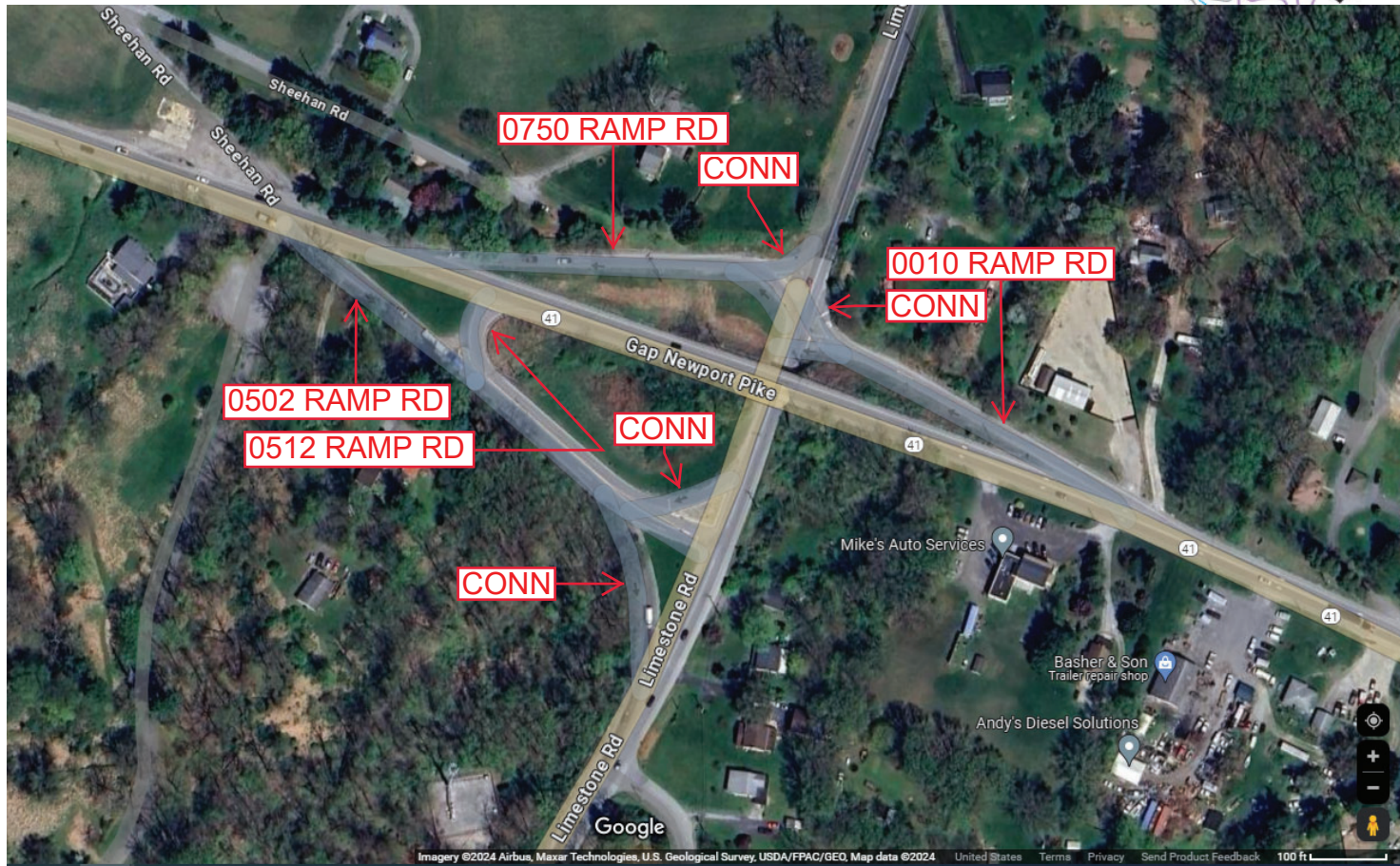
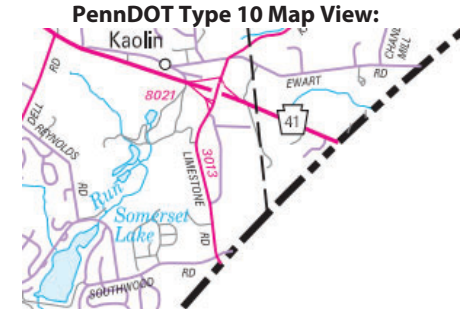
Intersecting SR's: PA 41 Gap Newport Pk & SR 3013 Limestone Rd

Ramp Segment Number and Ramp Segment Length Information:

Segment	Length	Segment	Length	Segment	Length	Segment	Length
0010	0395						
0502	0645						
0512	0473						
0750	0470						

Primary Route Interchange Exit Number

Secondary Route Interchange Exit Number



Last Date Modified: Mar 29, 2024



County: 15

# RMS Interchange Information

Print Form

Interchange Number: 8022

Bureau of Maintenance & Operations  
Asset Management Division



Interchange Name: PHOENIXVILLE INT

Intersecting SR's: US 422 Pottsville Bp & PA 724 Schuylkill Rd

Ramp Segment Number and Ramp Segment Length Information:

Segment	Length	Segment	Length	Segment	Length	Segment	Length
0010	0681						
0250	1223						
0752	0305						
0762	1495						

Primary Route  
Interchange Exit  
Number

Secondary Route  
Interchange Exit  
Number

PennDOT Type 10 Map View:



Last Date Modified:

Mar 29, 2024



County: 15

# RMS Interchange Information

Print Form

Bureau of Maintenance & Operations  
Asset Management Division



Interchange Number: 8023

Interchange Name: WESTTOWN ROAD INT

Intersecting SR's: US 202 West Chester Bp & SR 2007 Westtown Rd

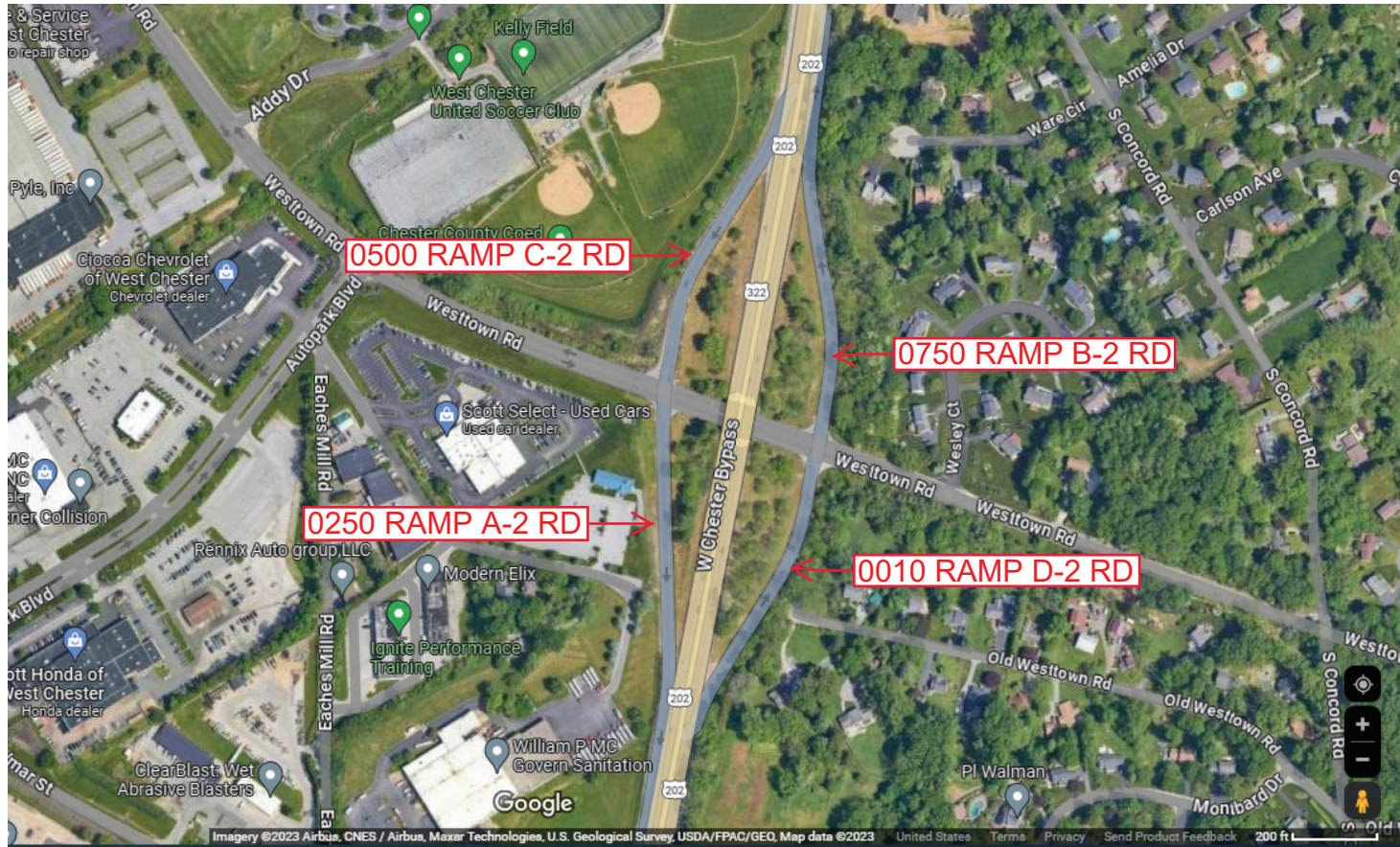
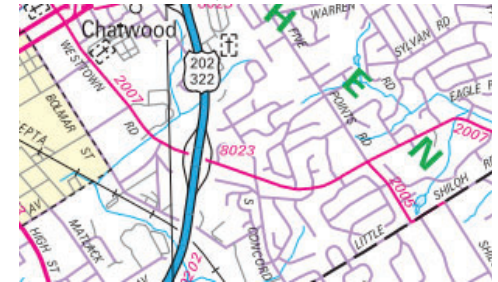
Ramp Segment Number and Ramp Segment Length Information:

Segment	Length	Segment	Length	Segment	Length	Segment	Length
0010	0600						
0250	0630						
0500	0600						
0750	0675						

Primary Route Interchange Exit Number

Secondary Route Interchange Exit Number

PennDOT Type 10 Map View:



Last Date Modified:

Jan 7, 2025



County: 15

# RMS Interchange Information

Bureau of Maintenance & Operations  
Asset Management Division

Print Form



Interchange Number: 8025

Interchange Name: CHESTER PIKE INT

Intersecting SR's: US 202 West Chester Bp & PA 3 West Chester Pk

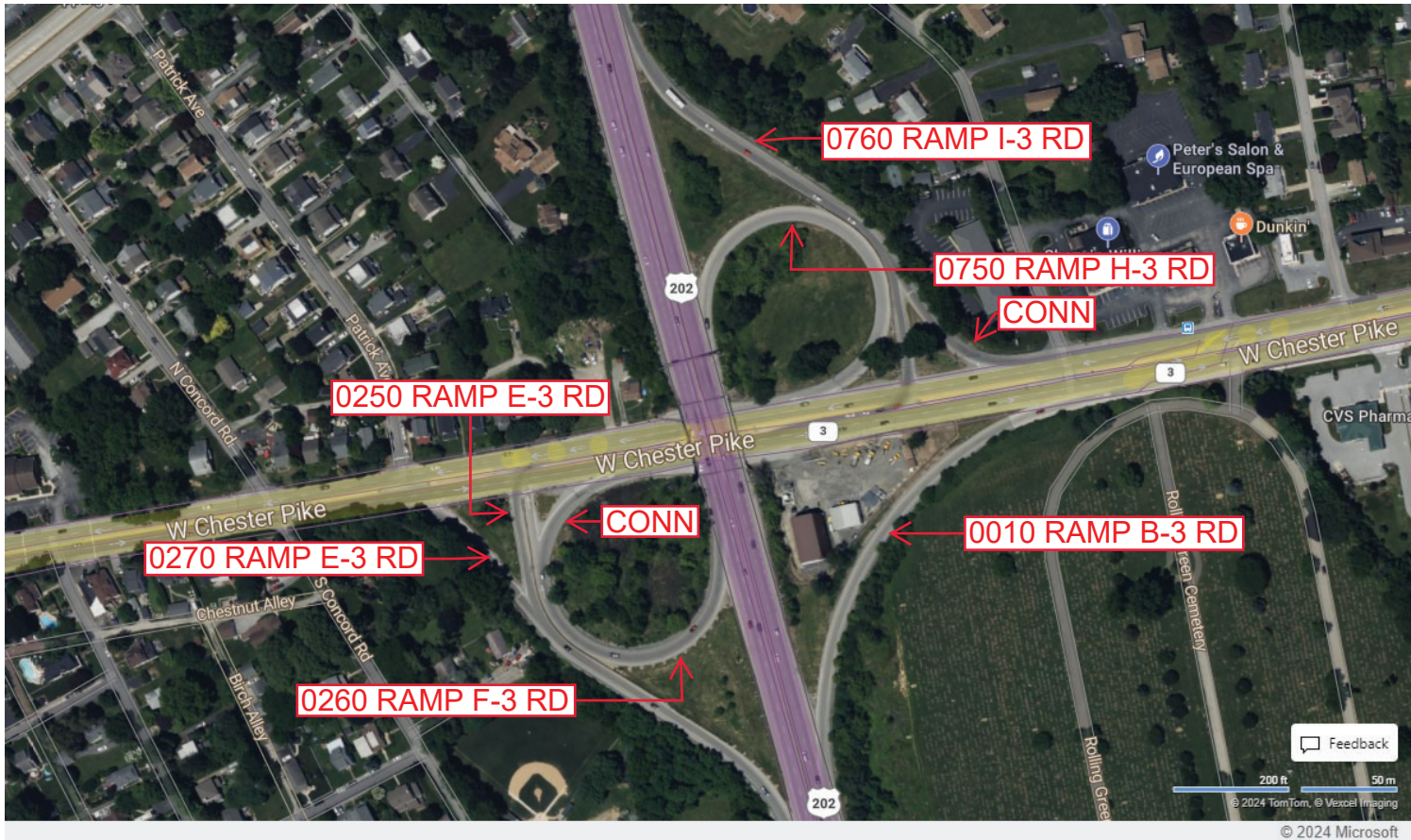
Ramp Segment Number and Ramp Segment Length Information:

Segment	Length	Segment	Length	Segment	Length	Segment	Length
0010	0657	0760	0800				
0250	0802						
0260	0590						
0270	0215						
0750	0640						

Primary Route Interchange Exit Number

Secondary Route Interchange Exit Number

PennDOT Type 10 Map View:



Last Date Modified:

Apr 1, 2024



County: 15

# RMS Interchange Information

Print Form

Bureau of Maintenance & Operations  
Asset Management Division



Interchange Number: 8026

Interchange Name: QUARRY ROAD INT

Intersecting SR's: US 30 & SR 3061 Quarry Rd & SR 3070 Lincoln Hw

Ramp Segment Number and Ramp Segment Length Information:

Segment	Length	Segment	Length	Segment	Length	Segment	Length
0250	0865						
0502	1058						
0512	1074						
0752	1804						
0762	1680						

Primary Route  
Interchange Exit  
Number

Secondary Route  
Interchange Exit  
Number

PennDOT Type 10 Map View:



Last Date Modified:

Apr 1, 2024



County: 15

# RMS Interchange Information

Print Form

Bureau of Maintenance & Operations  
Asset Management Division



Interchange Number: 8027

Interchange Name: PAOLI PIKE INT

Intersecting SR's: US 202 West Chester Bp & SR 2014 Paoli Pk

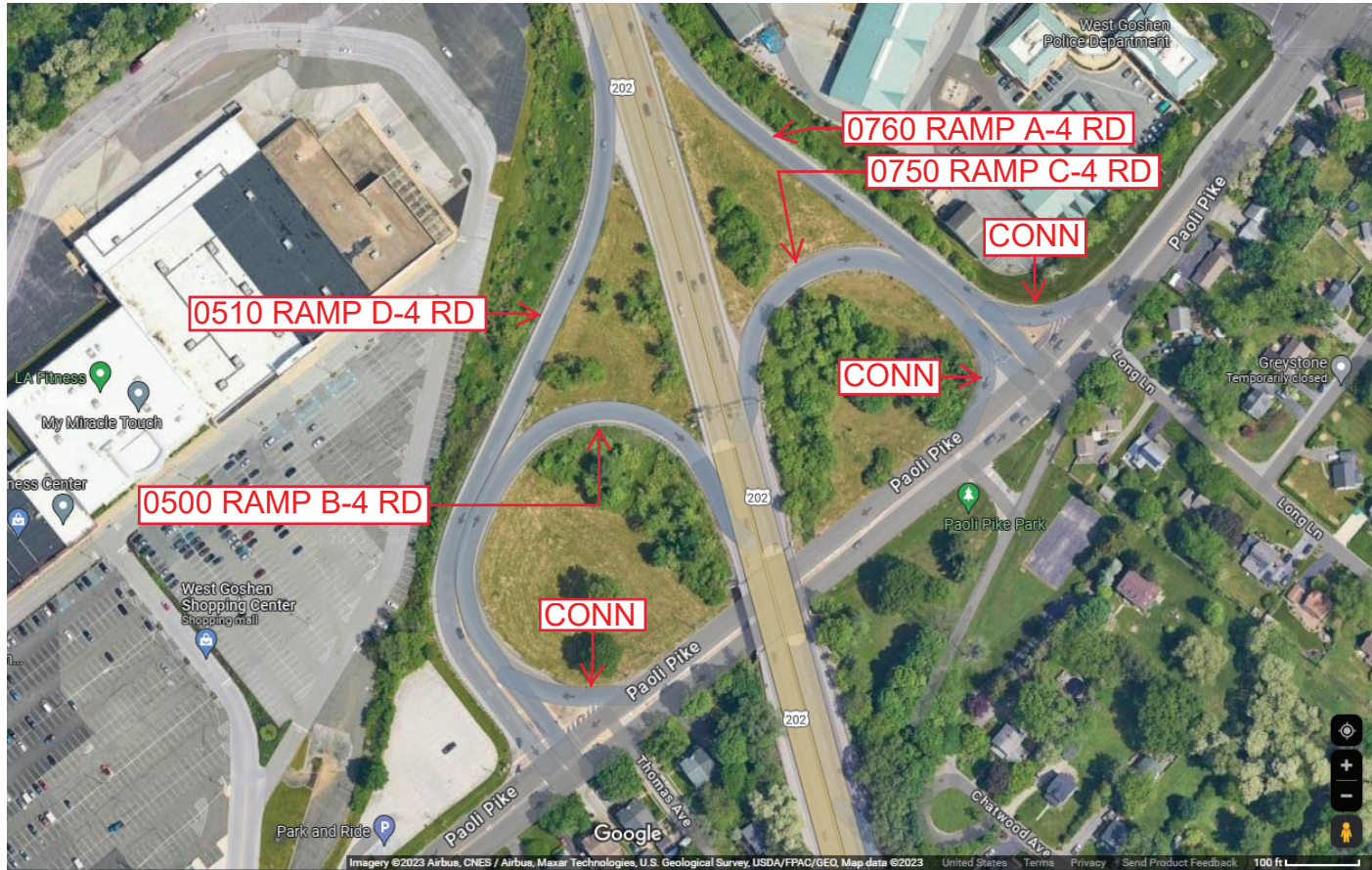
Ramp Segment Number and Ramp Segment Length Information:

Segment	Length	Segment	Length	Segment	Length	Segment	Length
0500	0730						
0510	0900						
0750	0475						
0760	0725						

Primary Route Interchange Exit Number

Secondary Route Interchange Exit Number

PennDOT Type 10 Map View:



Last Date Modified: Jan 7, 2025



County: 15

# RMS Interchange Information

Print Form

Interchange Number: 8028

Bureau of Maintenance & Operations  
Asset Management Division



Interchange Name: POTTSTOWN PIKE INT

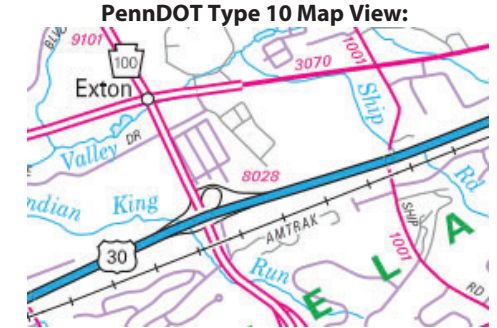
Intersecting SR's: US 30 Exton Bp, PA 100 Pottstown Pk & Walkertown Rd

Ramp Segment Number and Ramp Segment Length Information:

Segment	Length	Segment	Length	Segment	Length	Segment	Length
0010	1128	0760	0280				
0250	1085						
0500	1505						
0510	1002						
0750	1260						

Primary Route Interchange Exit Number

Secondary Route Interchange Exit Number



Last Date Modified:

Apr 1, 2024



County: 15

# RMS Interchange Information

Bureau of Maintenance & Operations  
Asset Management Division

Print Form



Interchange Number: 8029

Interchange Name: POTTSTOWN PIKE INT

Intersecting SR's: US 322 West Chester Bp & SR 3100 Pottstown Pk

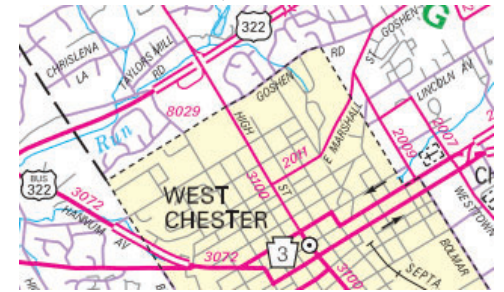
Ramp Segment Number and Ramp Segment Length Information:

Segment	Length	Segment	Length	Segment	Length	Segment	Length
0010	1020						
0500	0370						

Primary Route Interchange Exit Number

Secondary Route Interchange Exit Number

PennDOT Type 10 Map View:



Last Date Modified:

Apr 2, 2024



County: 15

# RMS Interchange Information

Print Form

Interchange Number: **8031**

Bureau of Maintenance & Operations  
Asset Management Division



Interchange Name: **DOWNINGTOWN BOOT RD INT**

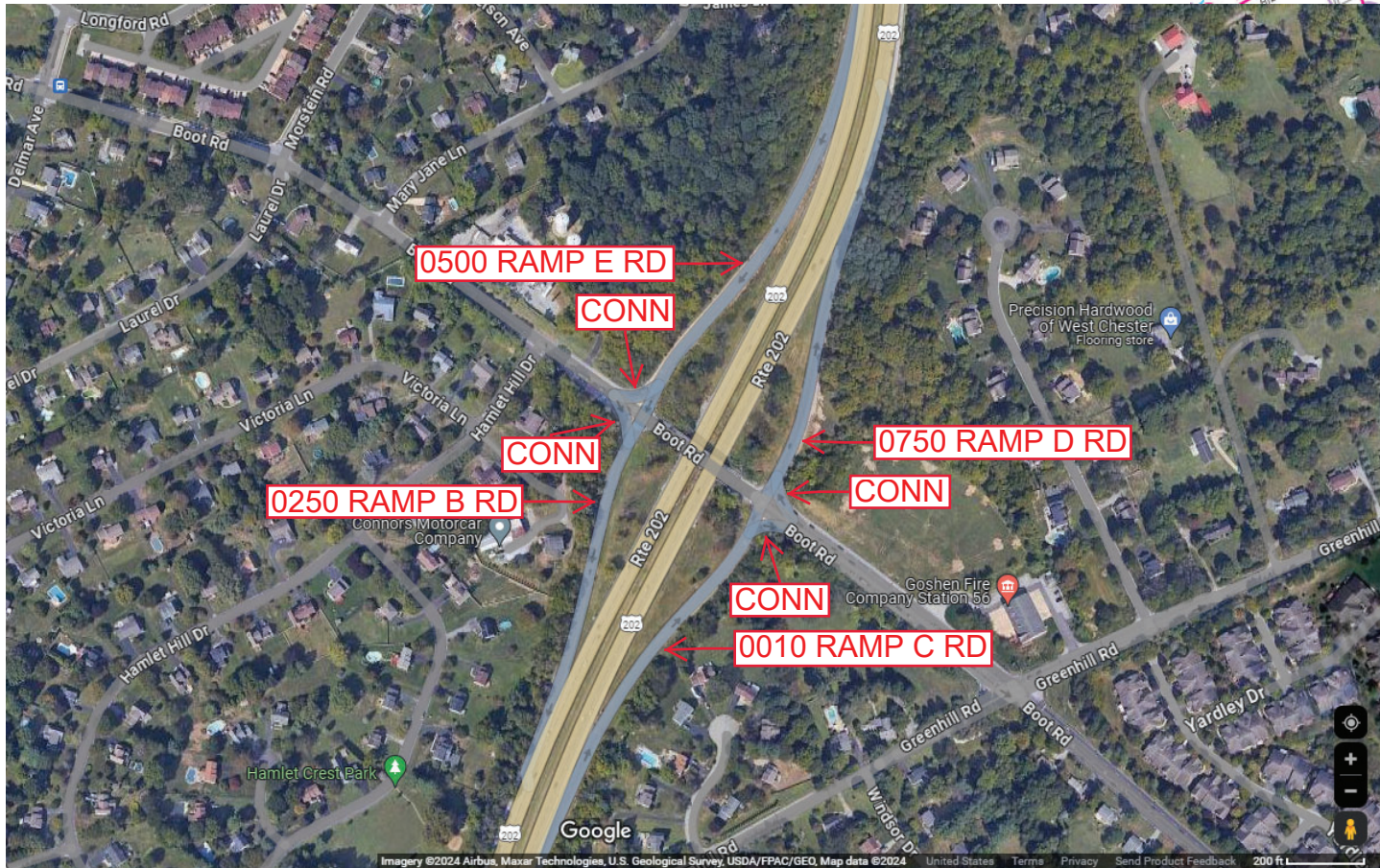
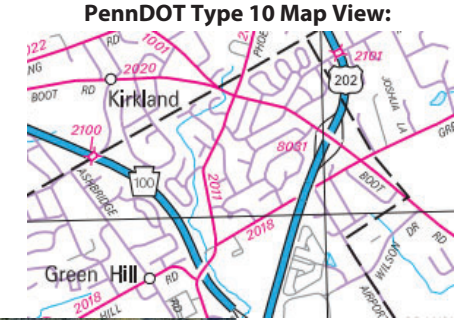
Intersecting SR's: **US 202 & SR 2020 Boot Rd**

Ramp Segment Number and Ramp Segment Length Information:

Segment	Length	Segment	Length	Segment	Length	Segment	Length
0010	0730						
0250	0690						
0500	0850						
0750	0654						

Primary Route Interchange Exit Number

Secondary Route Interchange Exit Number



Last Date Modified: Apr 2, 2024



County: 15

# RMS Interchange Information

Print Form

Interchange Number: 8033

Bureau of Maintenance & Operations  
Asset Management Division



Interchange Name: GLENLOCH INT

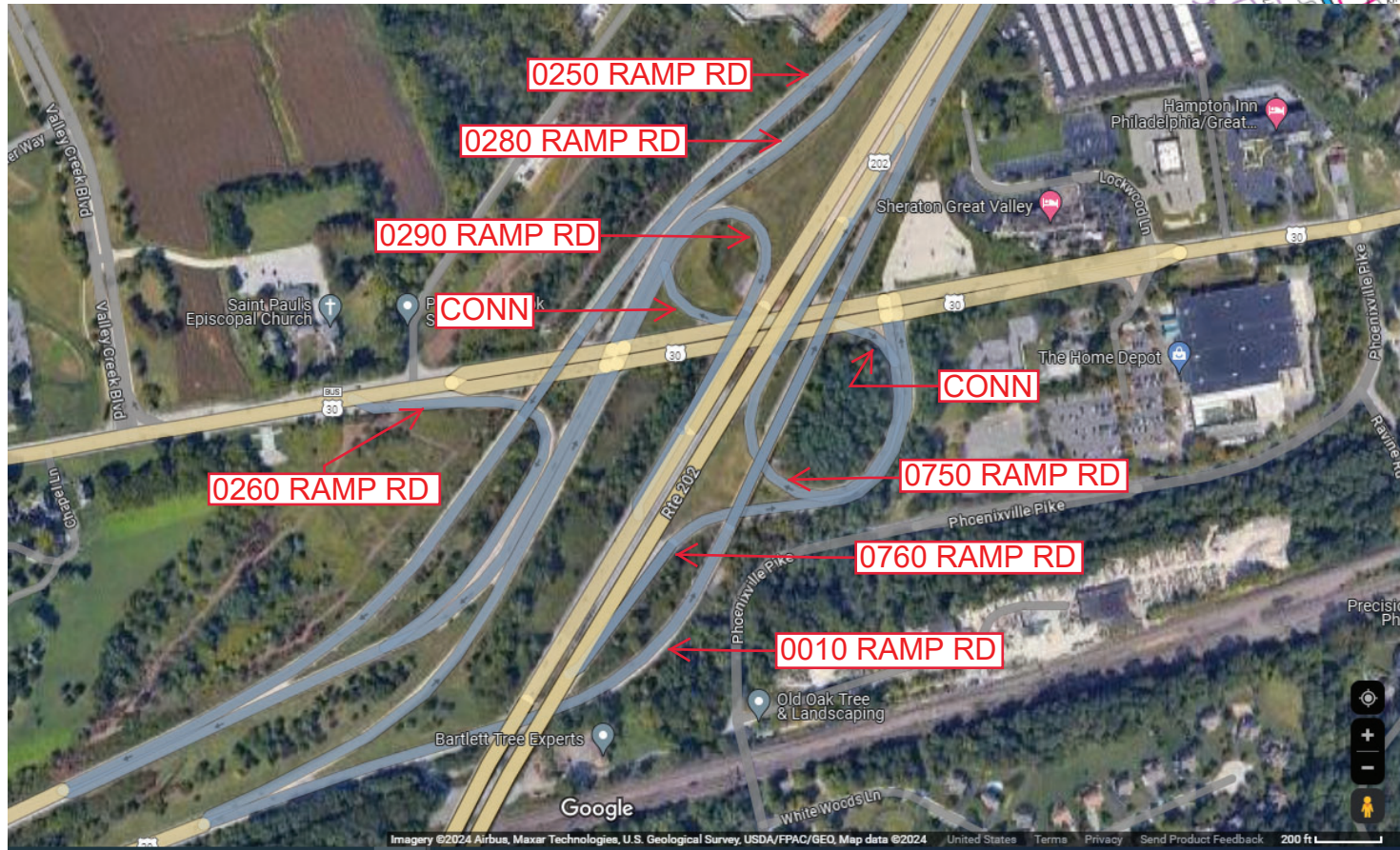
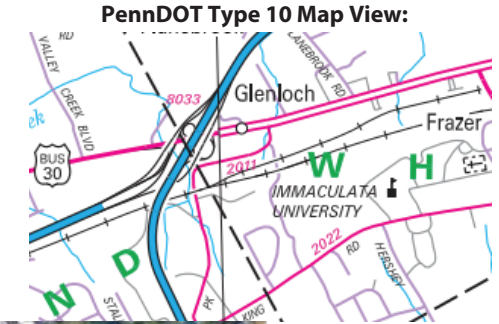
Intersecting SR's: US 30, US 202 & SR 3070 (Bus 30) Lincoln Hw

Ramp Segment Number and Ramp Segment Length Information:

Segment	Length	Segment	Length	Segment	Length	Segment	Length
0010	3745	0750	1058				
0250	3448	0760	1381				
0260	0973						
0280	1240						
0290	0828						

Primary Route Interchange Exit Number

Secondary Route Interchange Exit Number



Last Date Modified: Apr 3, 2024



County: 15

# RMS Interchange Information

Print Form

Interchange Number: 8035

Bureau of Maintenance & Operations  
Asset Management Division



Interchange Name: CONESTOGA ROAD INT

Intersecting SR's: US 202 & PA 401 Conestoga Rd

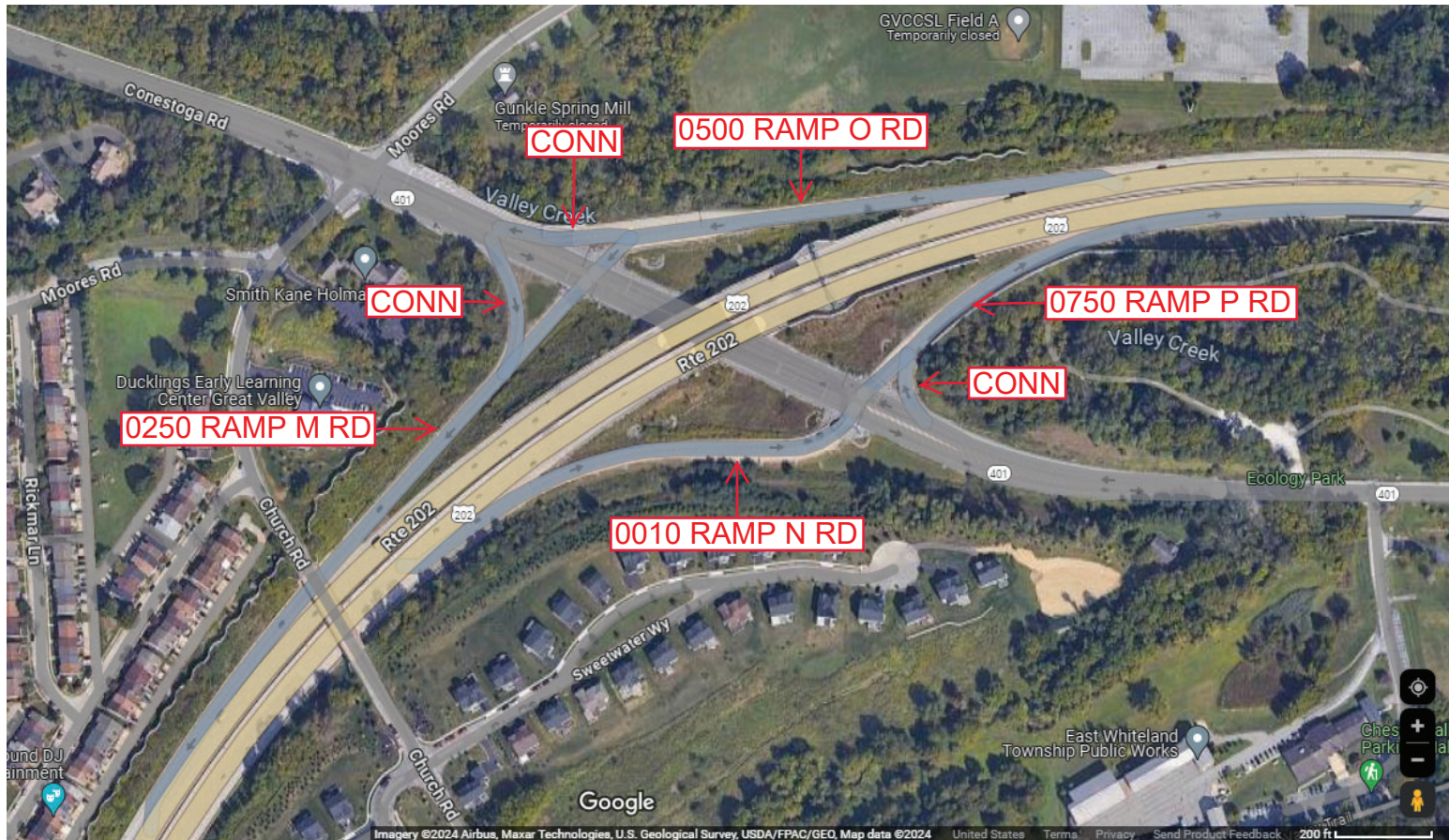
Ramp Segment Number and Ramp Segment Length Information:

Segment	Length	Segment	Length	Segment	Length	Segment	Length
0010	0665						
0250	0677						
0500	0730						
0750	0480						

Primary Route  
Interchange Exit  
Number

Secondary Route  
Interchange Exit  
Number

PennDOT Type 10 Map View:



Last Date Modified:

Apr 3, 2024



County: 15

# RMS Interchange Information

Print Form

Bureau of Maintenance & Operations  
Asset Management Division



Interchange Number: 8037

Interchange Name: MOREHALL ROAD INT

Intersecting SR's: US 202, PA 29, SR 1002 Swedesford Rd & T548 Matthews

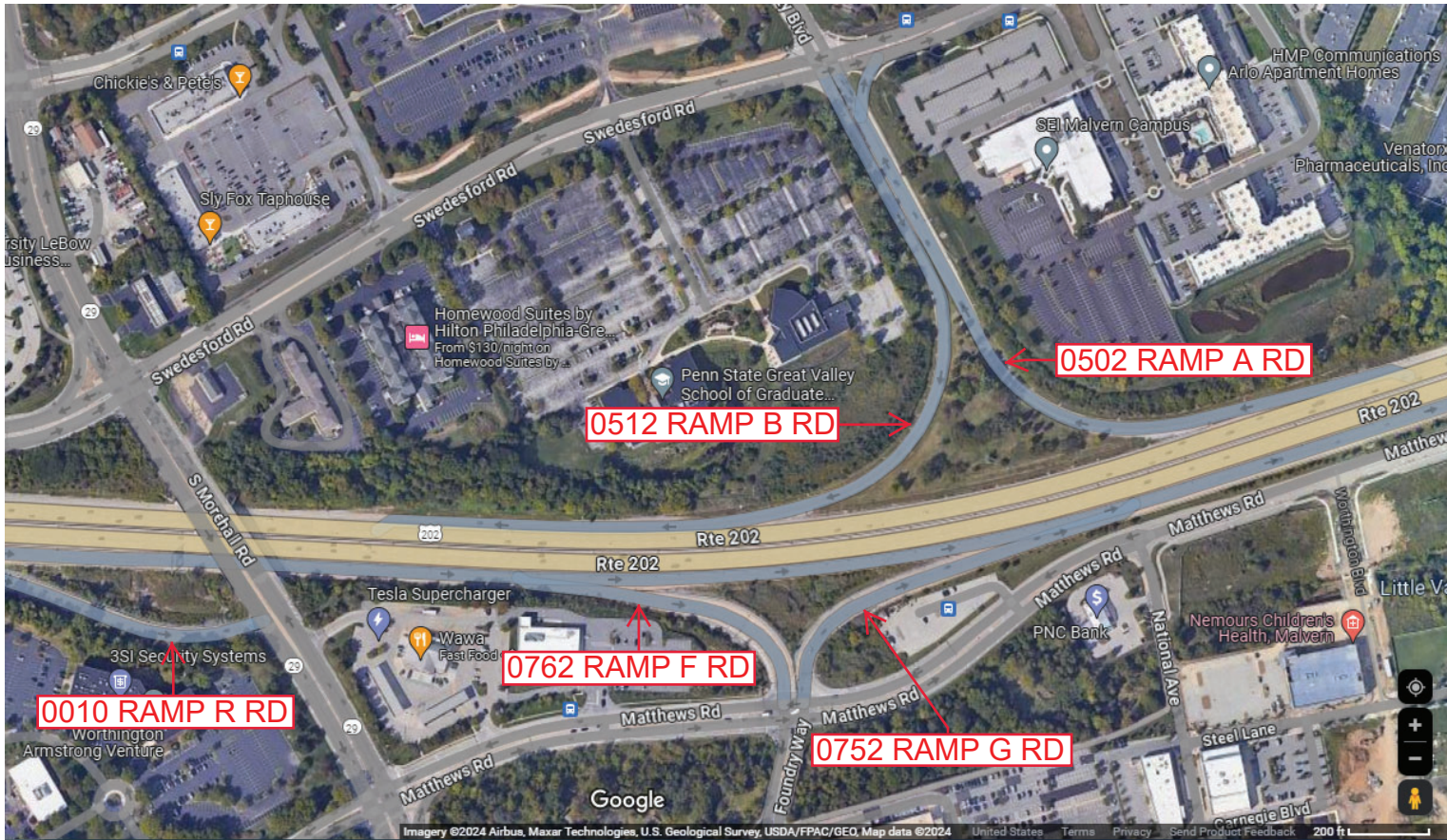
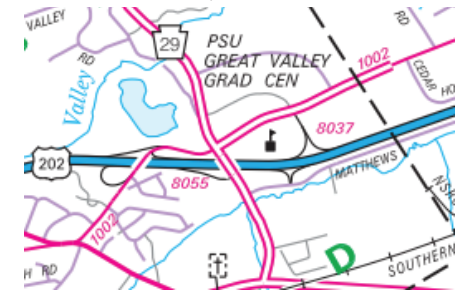
Ramp Segment Number and Ramp Segment Length Information:

Segment	Length	Segment	Length	Segment	Length	Segment	Length
0010	0800						
0502	1500						
0512	1365						
0752	0559						
0762	0500						

Primary Route Interchange Exit Number

Secondary Route Interchange Exit Number

PennDOT Type 10 Map View:



Last Date Modified:

Apr 4, 2024



County: 15

# RMS Interchange Information

Print Form

Interchange Number: 8039

Bureau of Maintenance & Operations  
Asset Management Division



Interchange Name: SWEDESFORD ROAD INT

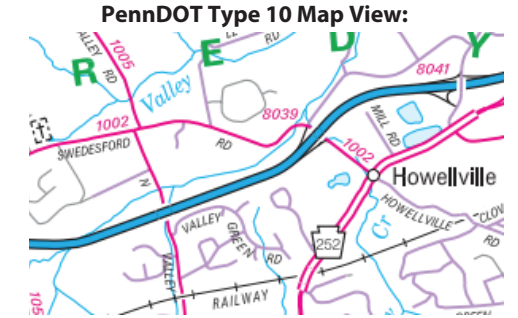
Intersecting SR's: US 202 & SR 1002 Swedesford Rd

Ramp Segment Number and Ramp Segment Length Information:

Segment	Length	Segment	Length	Segment	Length	Segment	Length
0010	0700						
0250	0688						

Primary Route Interchange Exit Number

Secondary Route Interchange Exit Number



Last Date Modified:

Apr 4, 2024



County: 15

# RMS Interchange Information

Print Form

Interchange Number: 8041

Bureau of Maintenance & Operations  
Asset Management Division



Interchange Name: CHESTERBROOK INT

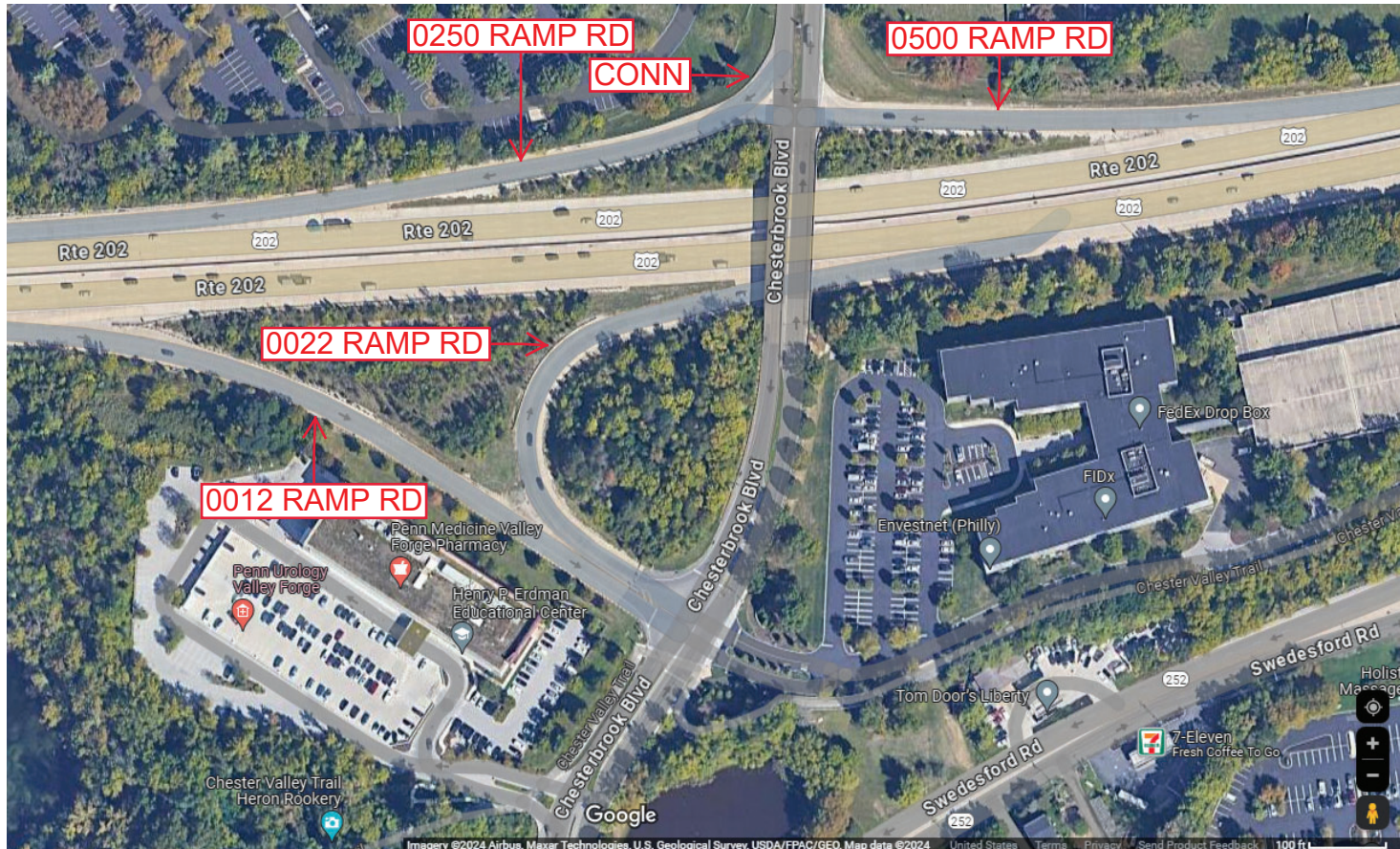
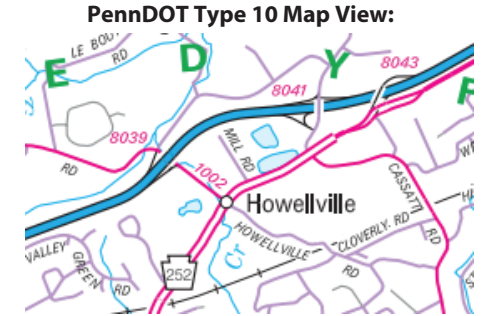
Intersecting SR's: US 202 & T843 Chesterbrook BI

Ramp Segment Number and Ramp Segment Length Information:

Segment	Length	Segment	Length	Segment	Length	Segment	Length
0012	0900						
0022	0686						
0250	0529						
0500	0465						

Primary Route Interchange Exit Number

Secondary Route Interchange Exit Number



Last Date Modified: Apr 4, 2024



County: 15

# RMS Interchange Information

Print Form

Interchange Number: 8043

Bureau of Maintenance & Operations  
Asset Management Division



Interchange Name: HOWELLVILLE INT

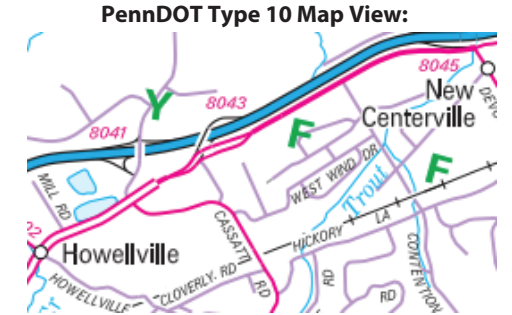
Intersecting SR's: US 202 & PA 252 Swedesford Rd

Ramp Segment Number and Ramp Segment Length Information:

Segment	Length	Segment	Length	Segment	Length	Segment	Length
0500	1353						
0750	0260						

Primary Route Interchange Exit Number

Secondary Route Interchange Exit Number



Last Date Modified: Apr 4, 2024



County: 15

# RMS Interchange Information

Print Form

Interchange Number: 8045

Bureau of Maintenance & Operations  
Asset Management Division



Interchange Name: VALLEY FORGE ROAD INT

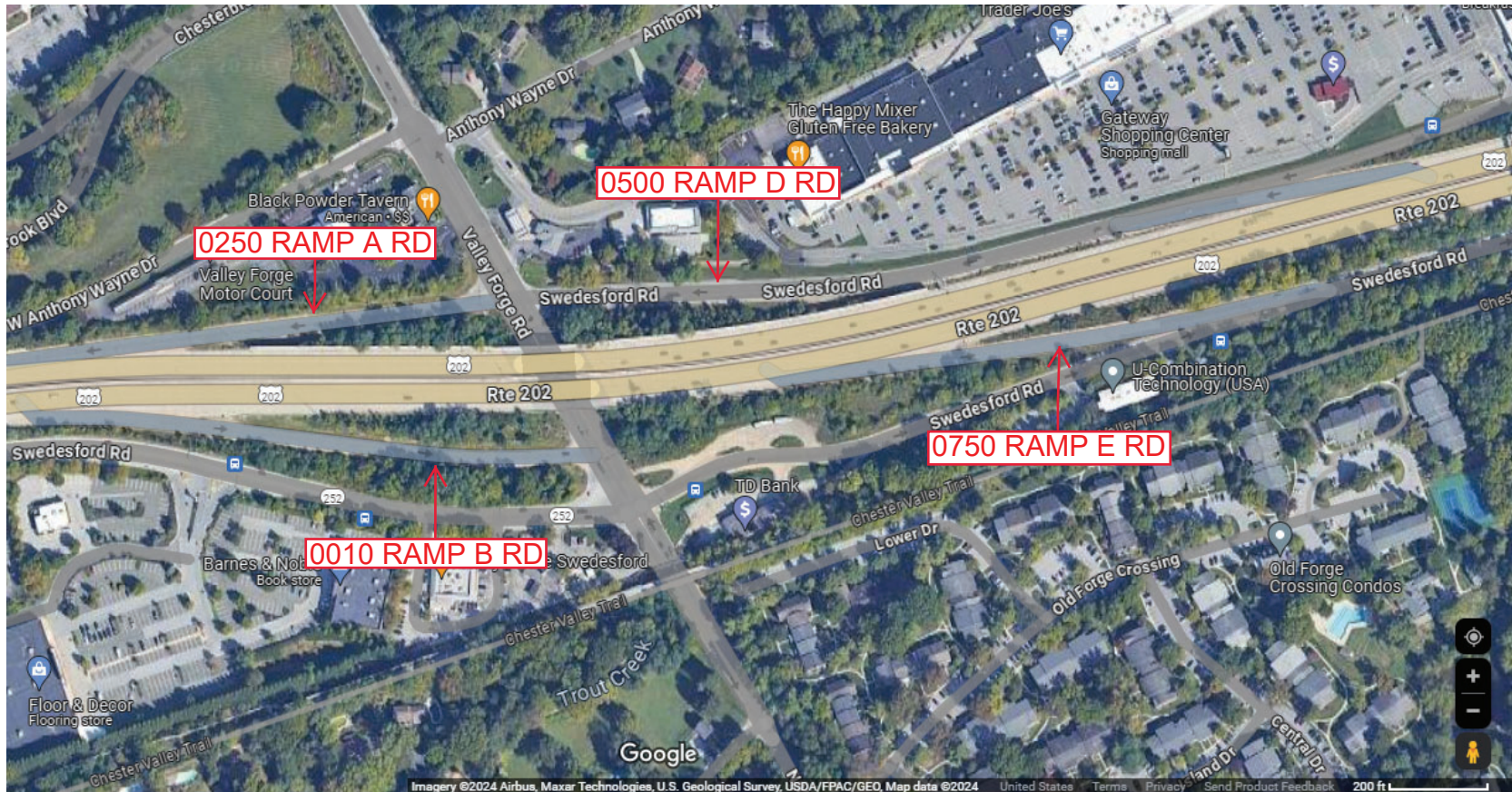
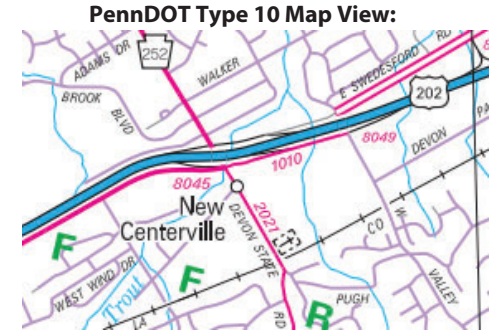
Intersecting SR's: US 202, PA 252 Valley Forge Rd & SR 1010 Swedesford Rd

Ramp Segment Number and Ramp Segment Length Information:

Segment	Length	Segment	Length	Segment	Length	Segment	Length
0010	0809						
0250	0643						
0500	1482						
0750	0620						

Primary Route Interchange Exit Number

Secondary Route Interchange Exit Number



Last Date Modified:

Apr 4, 2024



County: 15

# RMS Interchange Information

Print Form

Interchange Number: 8047

Bureau of Maintenance & Operations  
Asset Management Division



Interchange Name: COUNTY LINE EXCHANGE INT

Intersecting SR's: US 202, US 422 W County Line Ex & SR 1010 Swedesford Rd

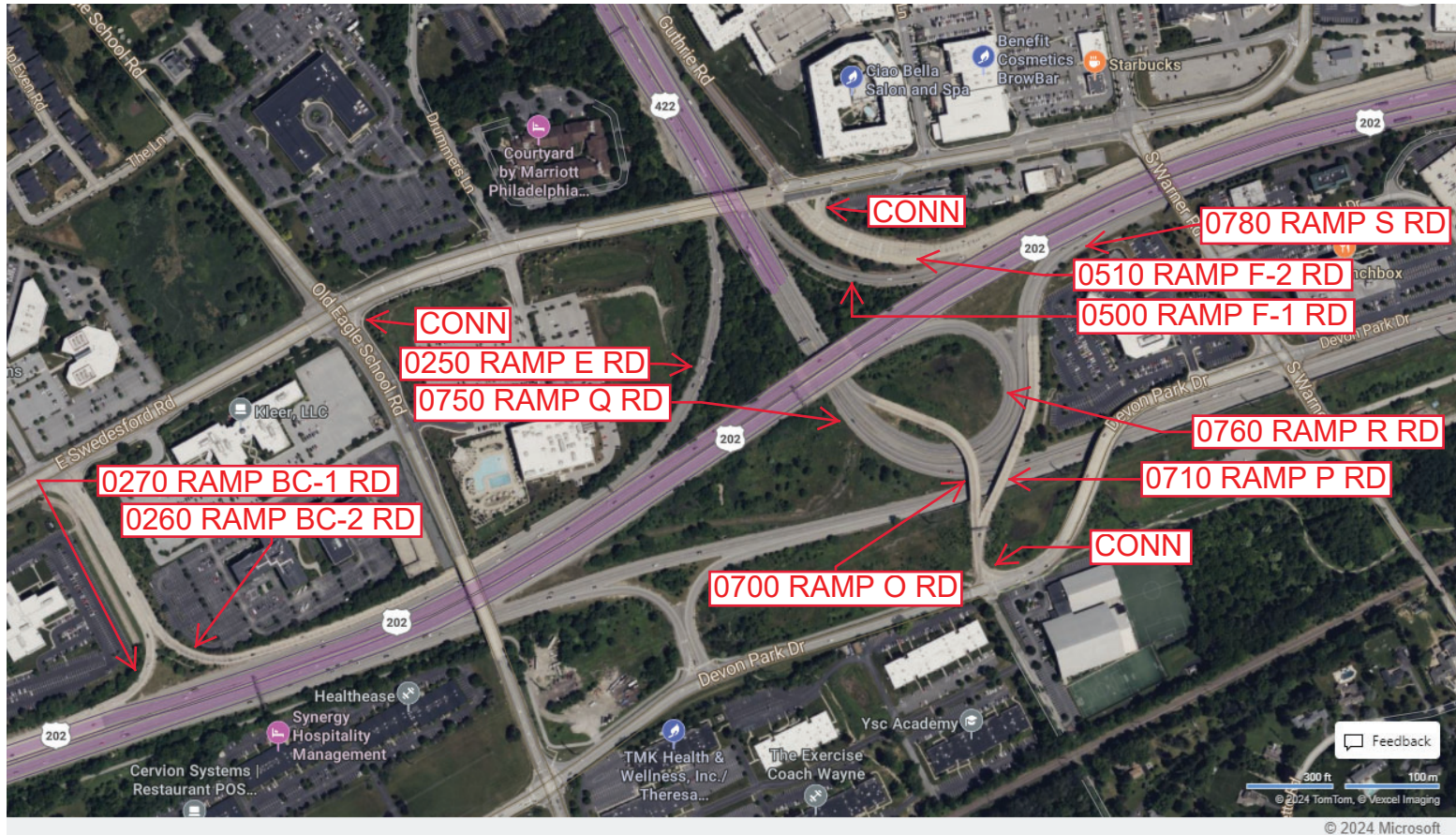
Ramp Segment Number and Ramp Segment Length Information:

Segment	Length	Segment	Length	Segment	Length	Segment	Length
0250	1616	0700	0900				
0260	1956	0710	0685				
0270	0877	0750	3013				
0500	0790	0760	1216				
0510	0657	0780	0773				

Primary Route Interchange Exit Number

Secondary Route Interchange Exit Number

PennDOT Type 10 Map View:



Last Date Modified:

Apr 5, 2024



County: 15

# RMS Interchange Information

Print Form

Bureau of Maintenance & Operations  
Asset Management Division



Interchange Number: 8049

Interchange Name: WEST VALLEY ROAD INT

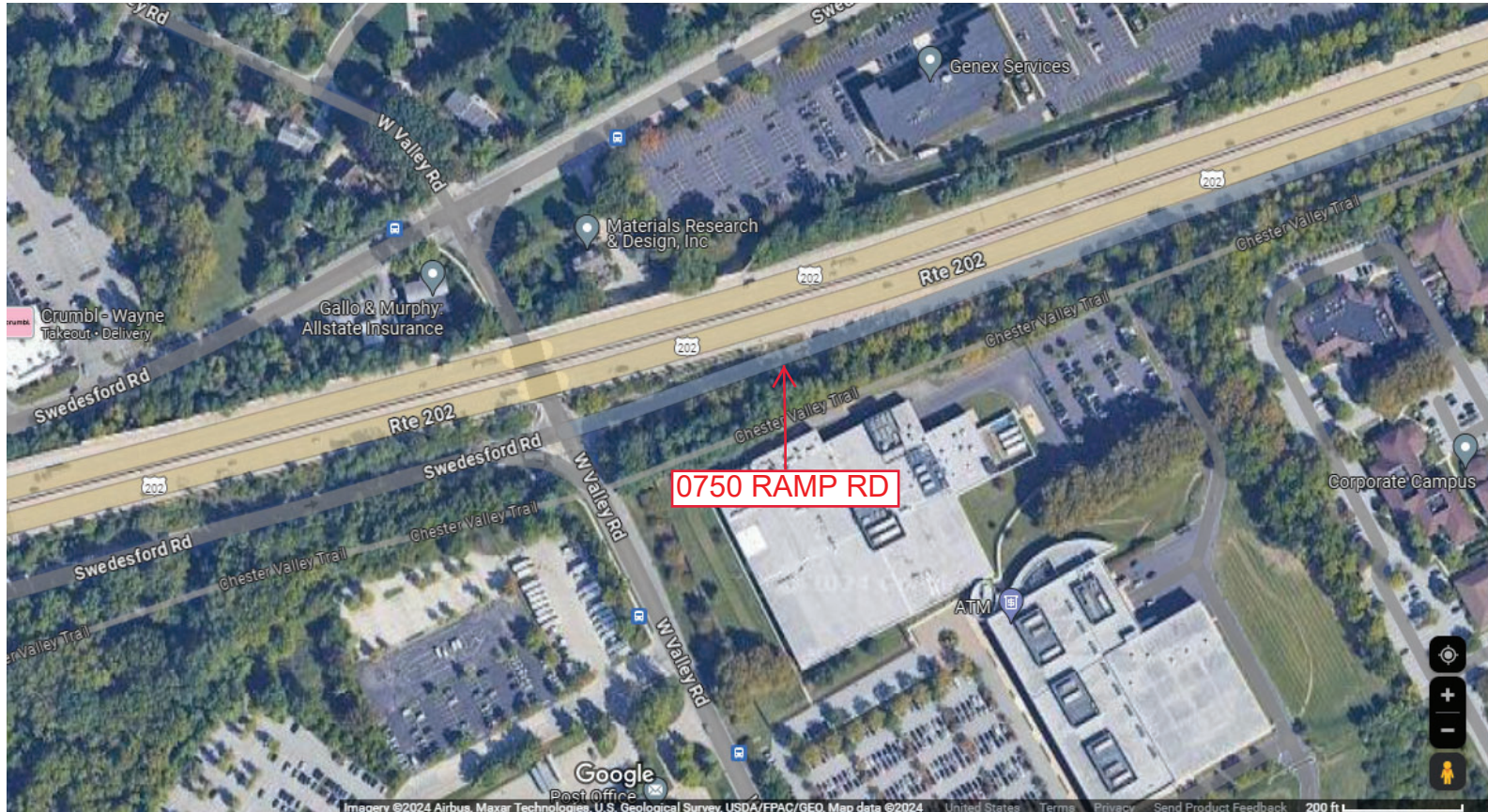
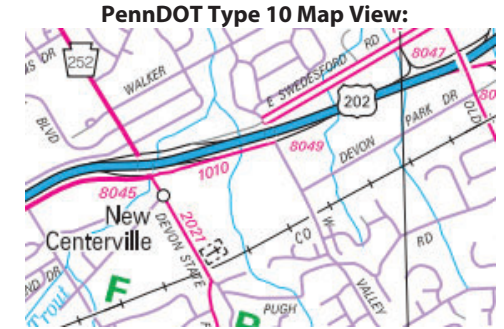
Intersecting SR's: US 202 & SR 1010 Valley Rd/T421 Valley Rd

Ramp Segment Number and Ramp Segment Length Information:

Segment	Length	Segment	Length	Segment	Length	Segment	Length
0750	0405						

Primary Route Interchange Exit Number

Secondary Route Interchange Exit Number



Last Date Modified: Apr 5, 2024



County: 15

# RMS Interchange Information

Print Form

Interchange Number: 8051

Bureau of Maintenance & Operations  
Asset Management Division



Interchange Name: NORCO INT

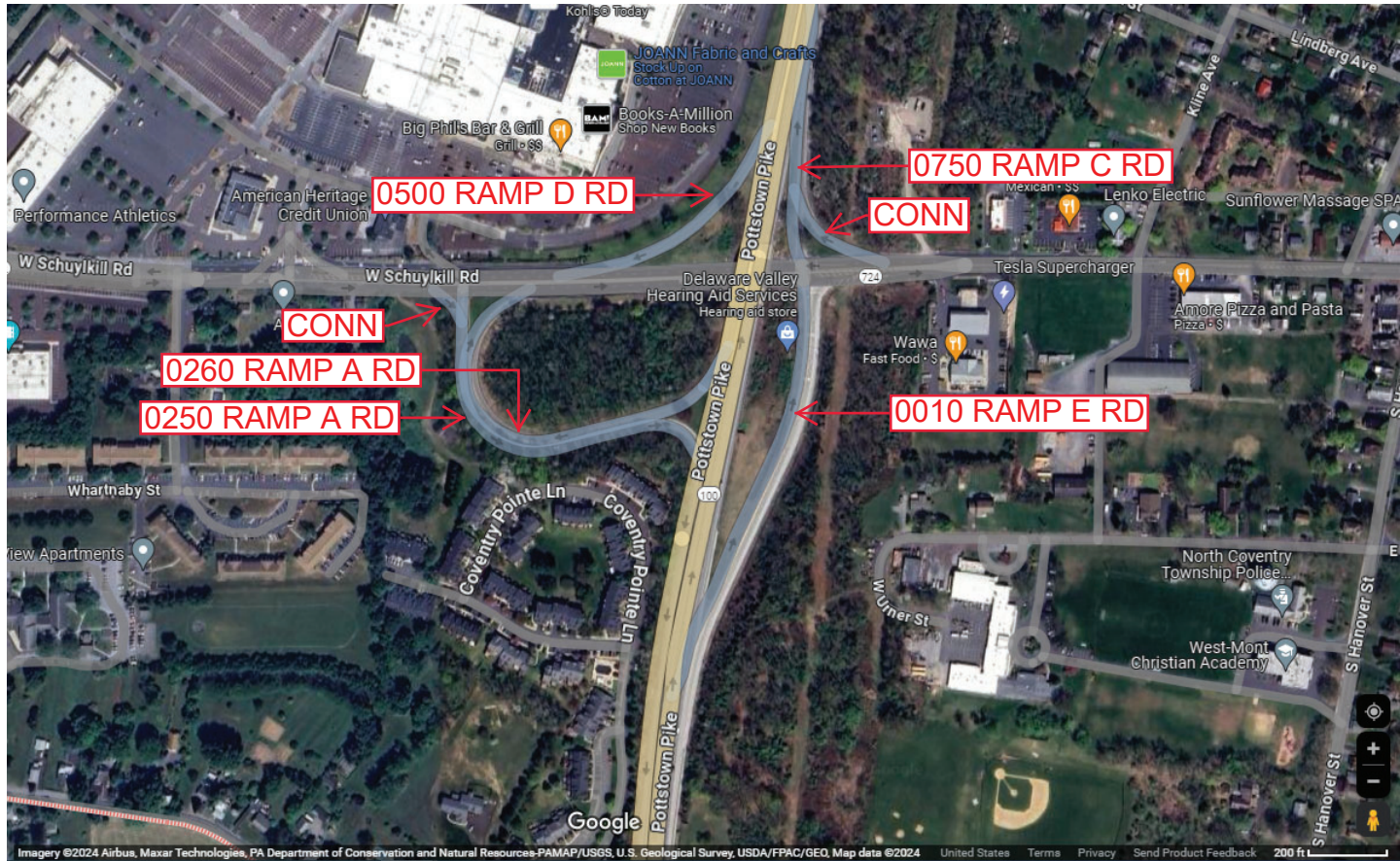
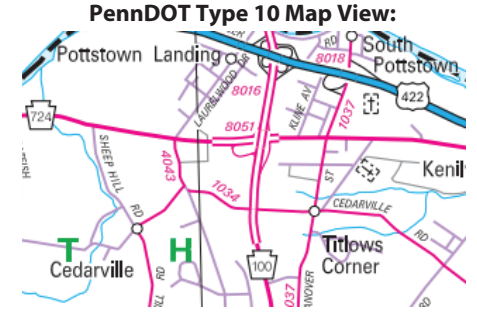
Intersecting SR's: PA 100 Pottstown Bp & PA 724 Schulykill Rd

Ramp Segment Number and Ramp Segment Length Information:

Segment	Length	Segment	Length	Segment	Length	Segment	Length
0010	0924						
0250	0907						
0260	0962						
0500	0442						
0750	0355						

Primary Route Interchange Exit Number

Secondary Route Interchange Exit Number



Last Date Modified: Apr 5, 2024



County: 15

# RMS Interchange Information

Bureau of Maintenance & Operations  
Asset Management Division

Print Form



Interchange Number: 8055

Interchange Name: CHESTER VALLEY KNOLL INT

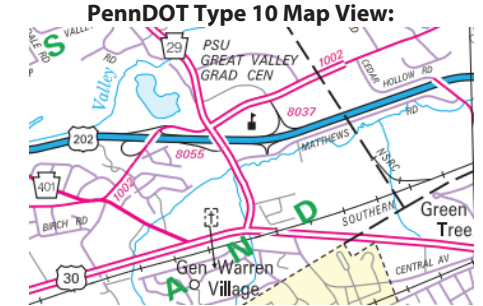
Intersecting SR's: US 202 & SR 1002 Swedesford Rd

Ramp Segment Number and Ramp Segment Length Information:

Segment	Length	Segment	Length	Segment	Length	Segment	Length
0010	1135						
0250	0670						
0500	0560						

Primary Route  
Interchange Exit  
Number

Secondary Route  
Interchange Exit  
Number



Last Date Modified:

Apr 5, 2024



County: 15

# RMS Interchange Information

Print Form

Interchange Number: 8057

Bureau of Maintenance & Operations  
Asset Management Division



Interchange Name: DEVON PARK DRIVE INT

Intersecting SR's: SR 1202 Collector Rd & T503 Park Dr

Ramp Segment Number and Ramp Segment Length Information:

Segment	Length	Segment	Length	Segment	Length	Segment	Length
0010	0497						
0020	0444						

Primary Route Interchange Exit Number

Secondary Route Interchange Exit Number

PennDOT Type 10 Map View:



Last Date Modified:

Apr 9, 2024



County: 15

# RMS Interchange Information

Print Form

Interchange Number: 9101

Bureau of Maintenance & Operations  
Asset Management Division



Interchange Name: POTTSTOWN PIKE & WATERLOO BL WYE

Intersecting SR's: PA 100 Pottstown Pk & T544 Waterloo Bl

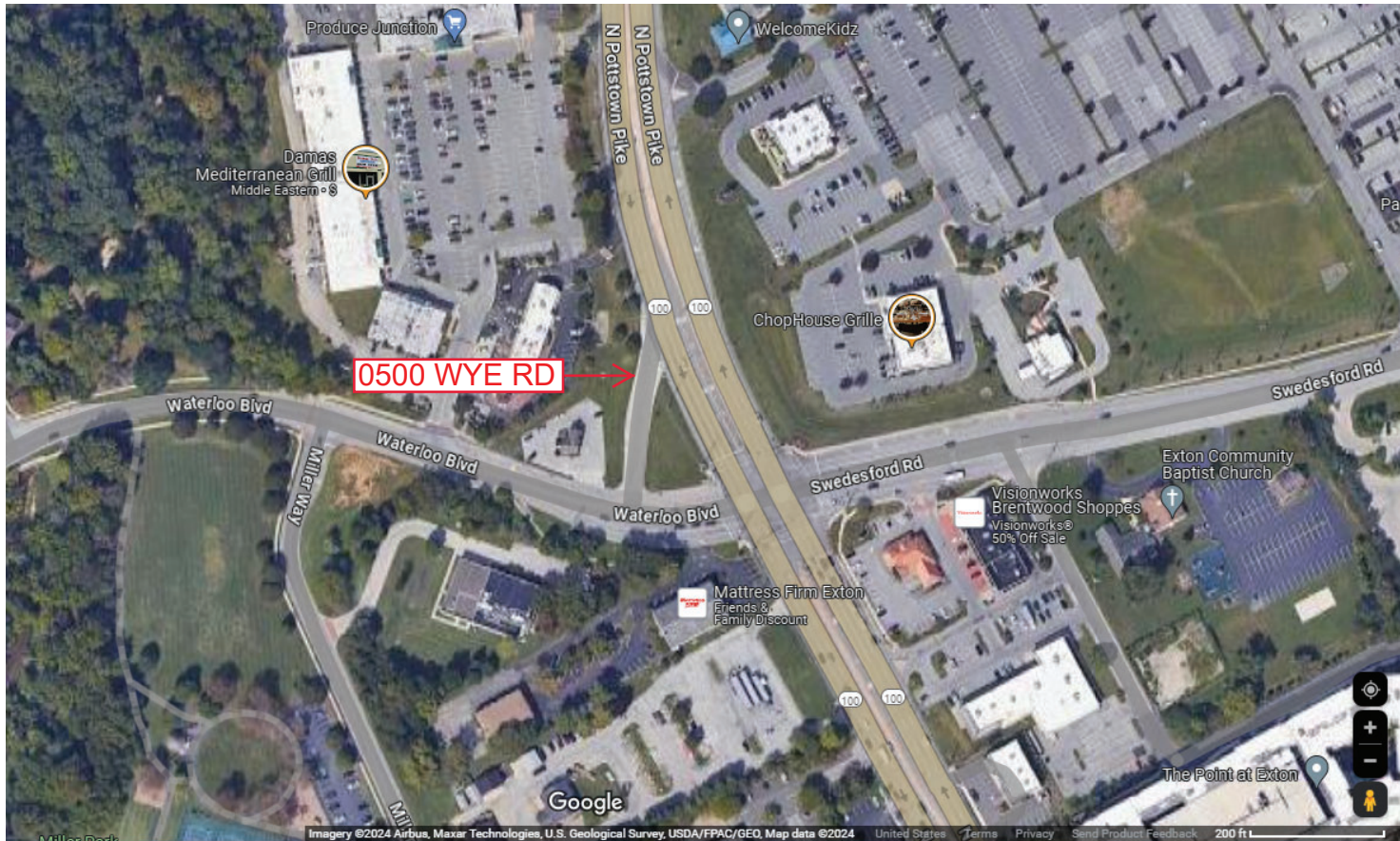
Ramp Segment Number and Ramp Segment Length Information:

Segment	Length	Segment	Length	Segment	Length	Segment	Length
0500	0187						

Primary Route  
Interchange Exit  
Number

Secondary Route  
Interchange Exit  
Number

PennDOT Type 10 Map View:



Last Date Modified:

Apr 9, 2024



County: 15

# RMS Interchange Information

Bureau of Maintenance & Operations  
Asset Management Division

Print Form



Interchange Number: 9102

Interchange Name: WILMINGTON PIKE

Intersecting SR's: US 202 Wilmington Pk & T434 Pleasant Grove Rd

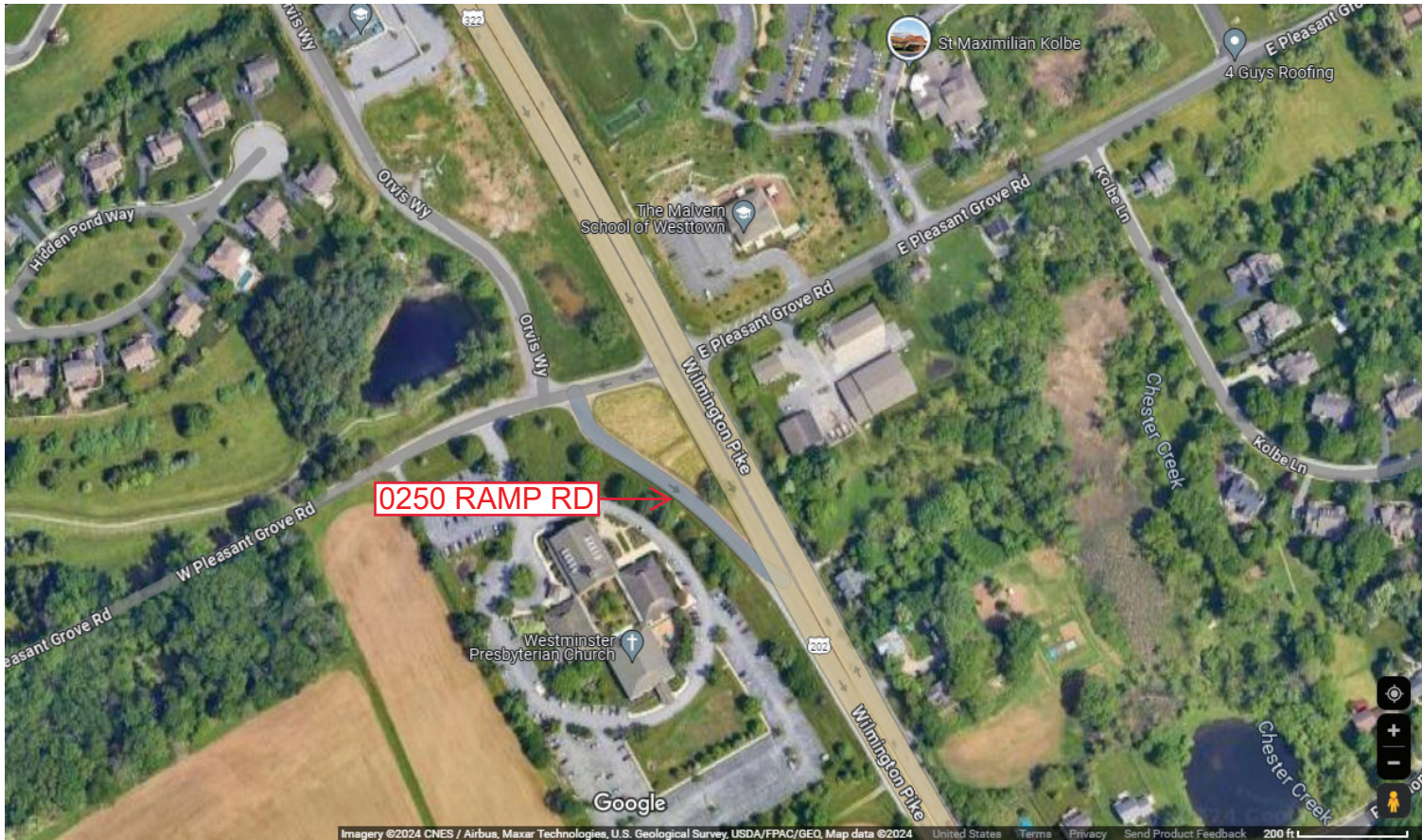
Ramp Segment Number and Ramp Segment Length Information:

Segment	Length	Segment	Length	Segment	Length	Segment	Length
0250	0422						

Primary Route Interchange Exit Number

Secondary Route Interchange Exit Number

PennDOT Type 10 Map View:



Imagery ©2024 CNES / Airbus, Maxar Technologies, U.S. Geological Survey, USDA/FPAC/GEO, Map data ©2024 United States Terms Privacy Send Product Feedback 200 ft

Last Date Modified: Apr 9, 2024



County: 15

# RMS Interchange Information

Print Form

Interchange Number: 9103

Bureau of Maintenance & Operations  
Asset Management Division



Interchange Name: PA 100 JUGHANDLE

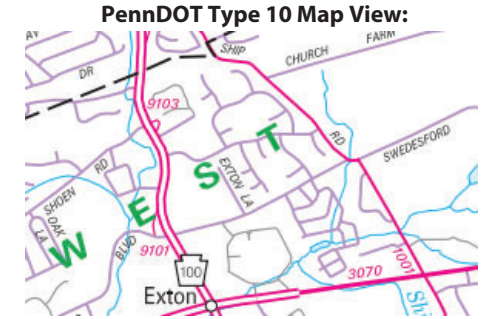
Intersecting SR's: PA 100 Pottstown Pk & T414 Shoen Rd

Ramp Segment Number and Ramp Segment Length Information:

Segment	Length	Segment	Length	Segment	Length	Segment	Length
0010	0241						

Primary Route Interchange Exit Number

Secondary Route Interchange Exit Number



Last Date Modified:

Apr 9, 2024



County: 15

# RMS Interchange Information

Print Form

Interchange Number: 9105

Bureau of Maintenance & Operations  
Asset Management Division



Interchange Name: POTTSTOWN PIKE & SHIP RD

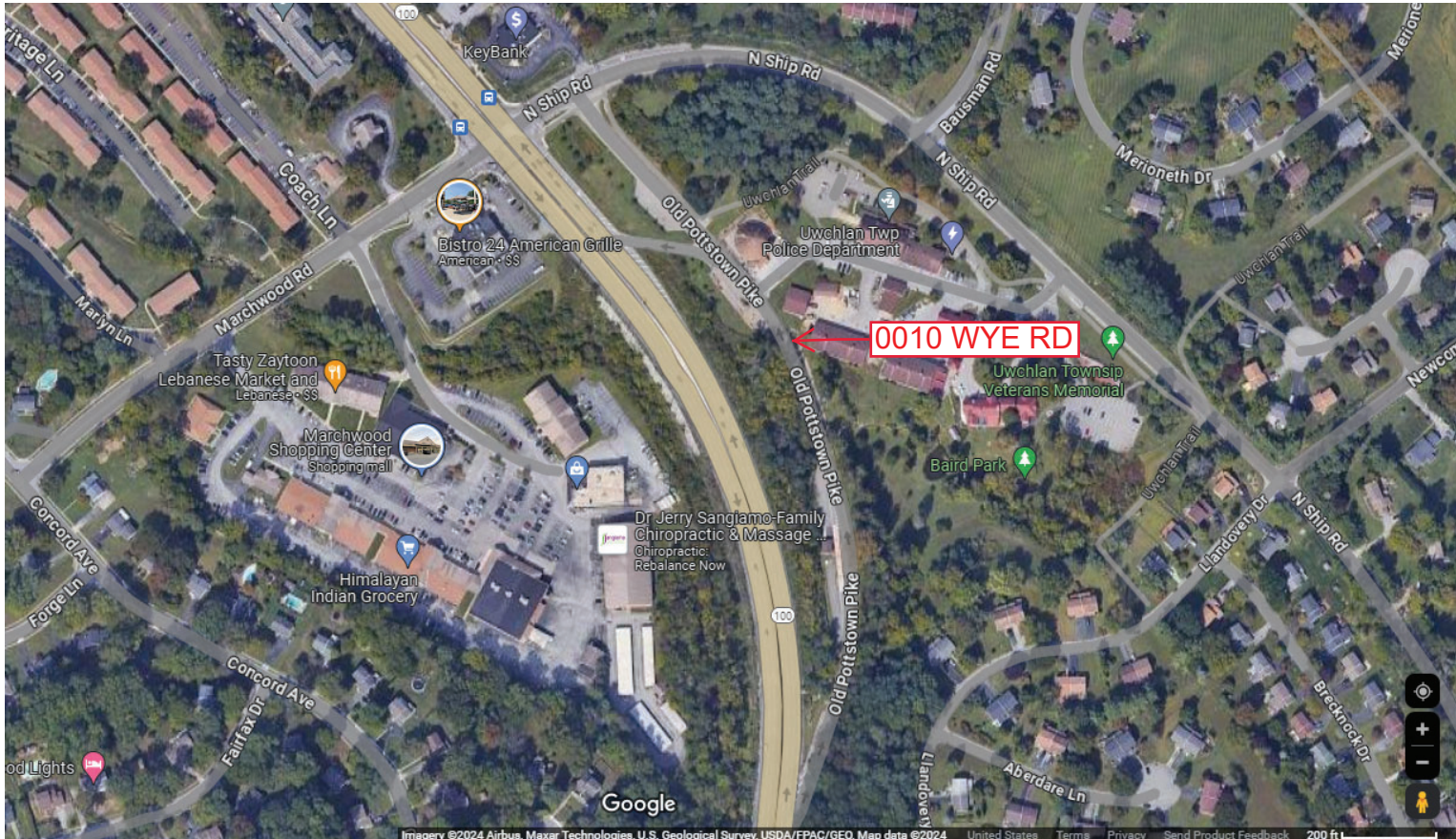
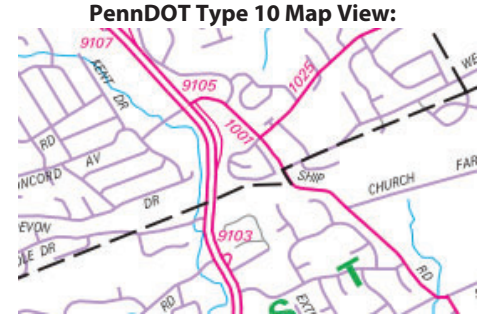
Intersecting SR's: PA 100 Pottstown Pk & SR 1001 Ship Rd

Ramp Segment Number and Ramp Segment Length Information:

Segment	Length	Segment	Length	Segment	Length	Segment	Length
0010	1620						

Primary Route Interchange Exit Number

Secondary Route Interchange Exit Number



Last Date Modified: Apr 9, 2024



County: 15

# RMS Interchange Information

Print Form

Interchange Number: 9107

Bureau of Maintenance & Operations  
Asset Management Division



Interchange Name: POTTSTOWN PIKE & WORTHINGTON ROAD

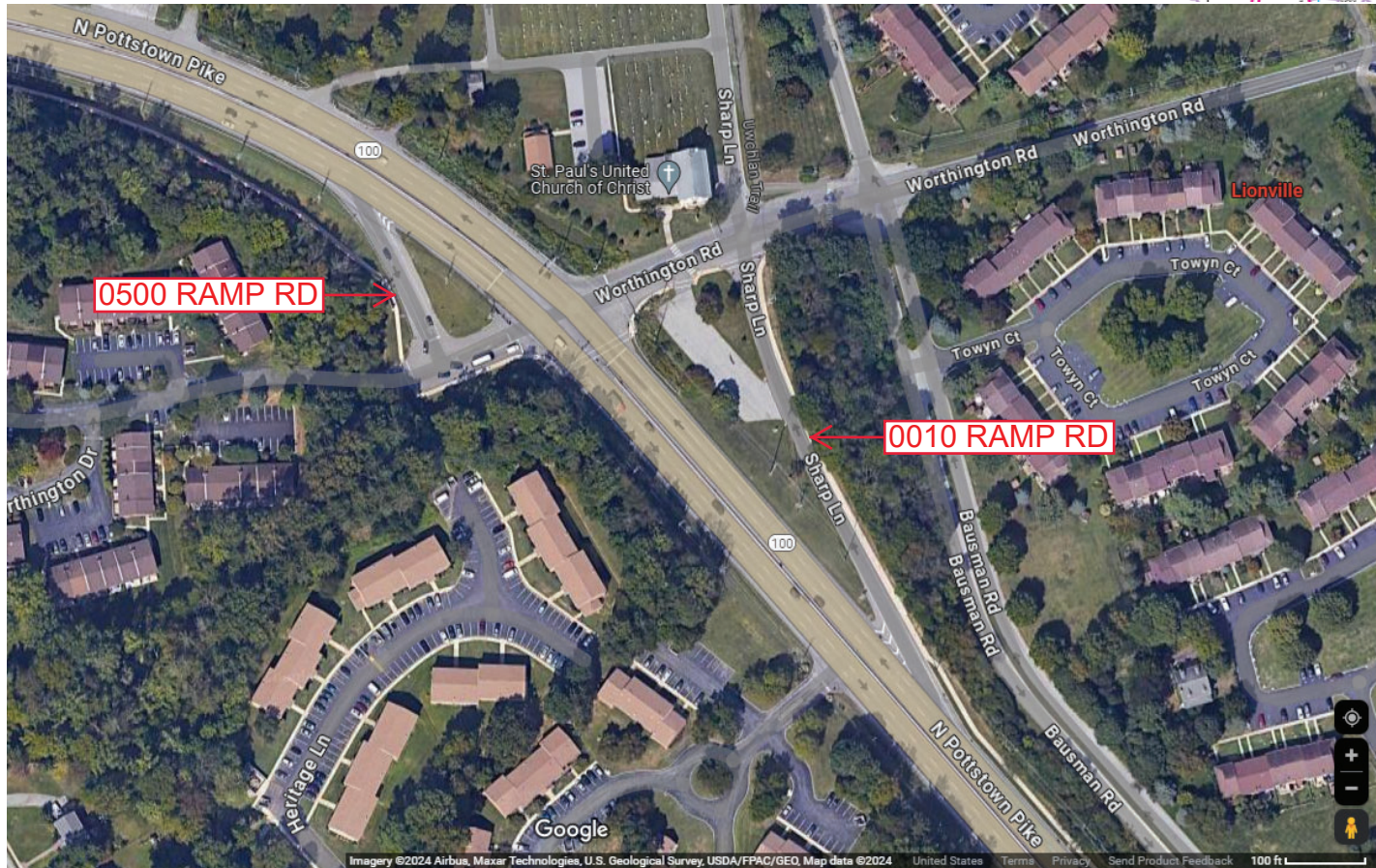
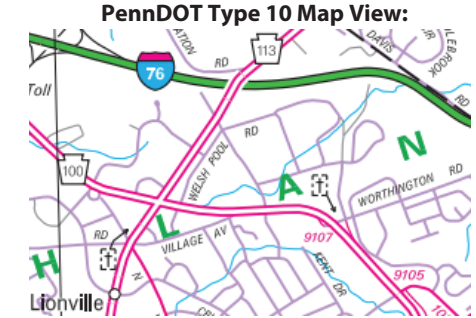
Intersecting SR's: PA 100 Pottstown Pk & T578 Worthington Rd

Ramp Segment Number and Ramp Segment Length Information:

Segment	Length	Segment	Length	Segment	Length	Segment	Length
0010	0540						
0500	0190						

Primary Route Interchange Exit Number

Secondary Route Interchange Exit Number



Last Date Modified:

Apr 10, 2024



County: 15

# RMS Interchange Information

Print Form

Interchange Number: 9110

Bureau of Maintenance & Operations  
Asset Management Division



Interchange Name: PA 41 WYE ROAD

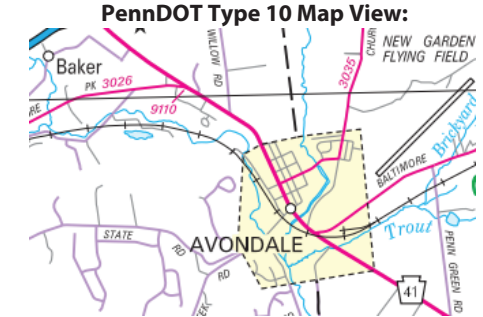
Intersecting SR's: PA 41 Gap Newport Pk & SR 3026 Old Baltimore Pk

Ramp Segment Number and Ramp Segment Length Information:

Segment	Length	Segment	Length	Segment	Length	Segment	Length
0010	0232						

Primary Route  
Interchange Exit  
Number

Secondary Route  
Interchange Exit  
Number



Last Date Modified:

Apr 10, 2024



County: 15

# RMS Interchange Information

Print Form

Interchange Number: 9402

Bureau of Maintenance & Operations  
Asset Management Division



Interchange Name: COLLECTOR ROAD

Intersecting SR's: US 202, SR 8037 & SR 8055

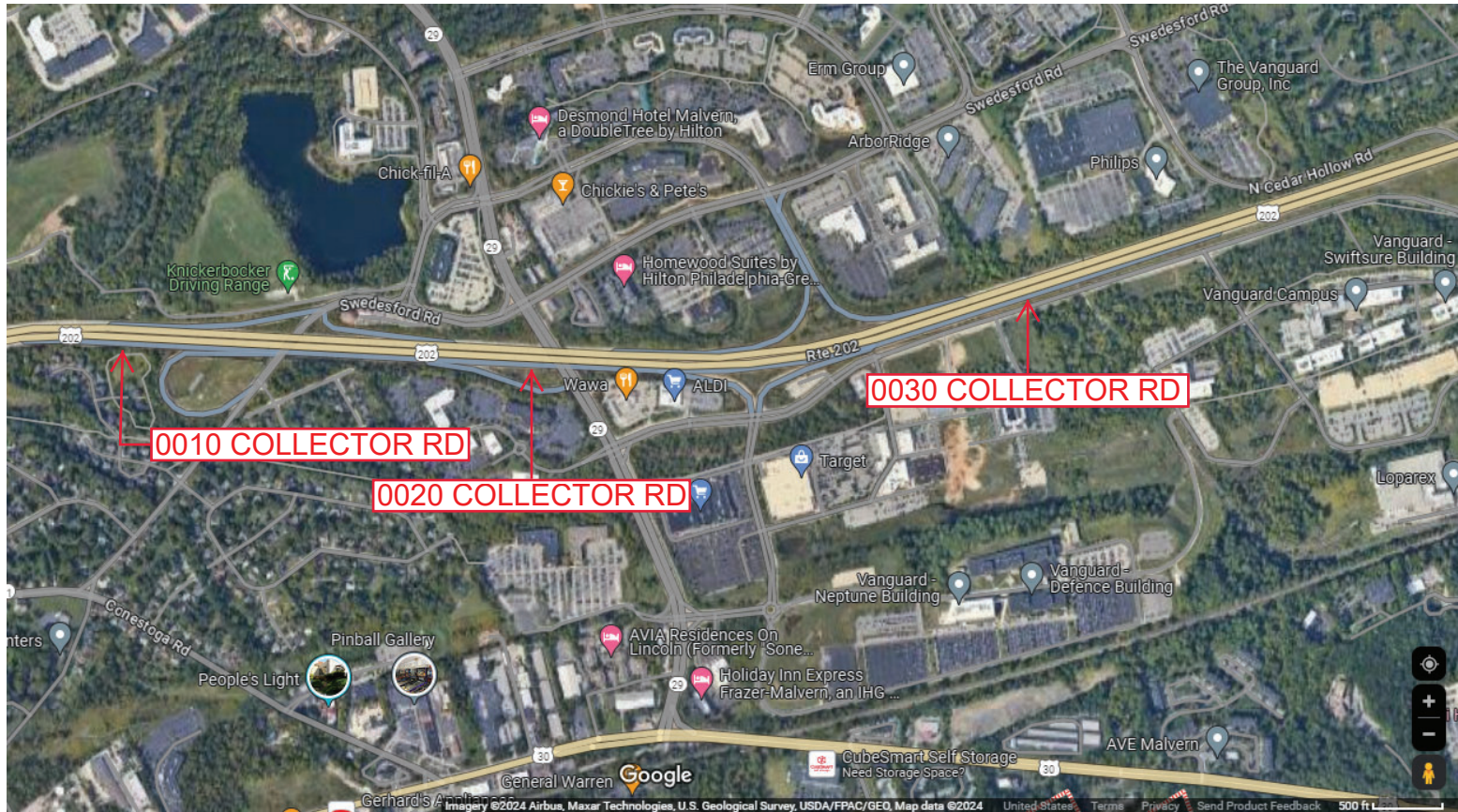
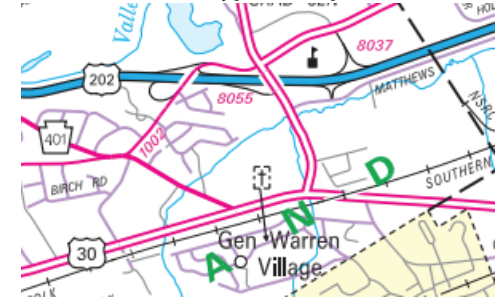
Ramp Segment Number and Ramp Segment Length Information:

Segment	Length	Segment	Length	Segment	Length	Segment	Length
0010	1255						
0020	2041						
0030	3477						

Primary Route  
Interchange Exit  
Number

Secondary Route  
Interchange Exit  
Number

PennDOT Type 10 Map View:



Last Date Modified: Oct 22, 2024



County: 15

# RMS Interchange Information

Print Form

Interchange Number: 9404

Bureau of Maintenance & Operations  
Asset Management Division



Interchange Name: WILMINGTON PIKE

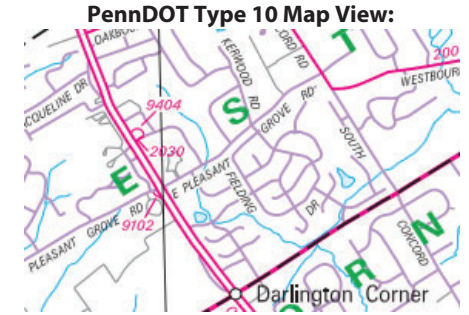
Intersecting SR's: US 202 Wilmington Pk & SR 2030 Skiles Blvd

Ramp Segment Number and Ramp Segment Length Information:

Segment	Length	Segment	Length	Segment	Length	Segment	Length
0750	0472						

Primary Route Interchange Exit Number

Secondary Route Interchange Exit Number



Last Date Modified:

Jan 7, 2025



County: 15

# RMS Interchange Information

Bureau of Maintenance & Operations  
Asset Management Division

Print Form



Interchange Number: 9501

Interchange Name: PARK & RIDE

Intersecting SR's: (TWP) Lloyd Av

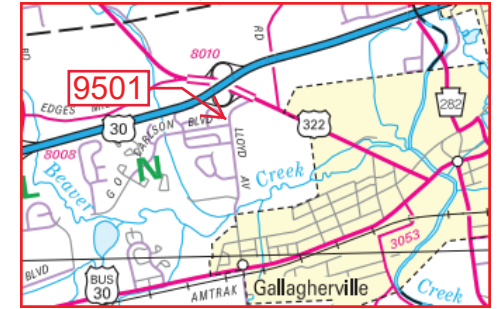
Ramp Segment Number and Ramp Segment Length Information:

Segment	Length	Segment	Length	Segment	Length	Segment	Length
0010	0460						

Primary Route Interchange Exit Number

Secondary Route Interchange Exit Number

PennDOT Type 10 Map View:



Last Date Modified: Feb 10, 2025



County: 15

# RMS Interchange Information

Bureau of Maintenance & Operations  
Asset Management Division

Print Form



Interchange Number: **9502**

Interchange Name: **PARK & RIDE**

Intersecting SR's: **SR 2014 Paoli Pk**

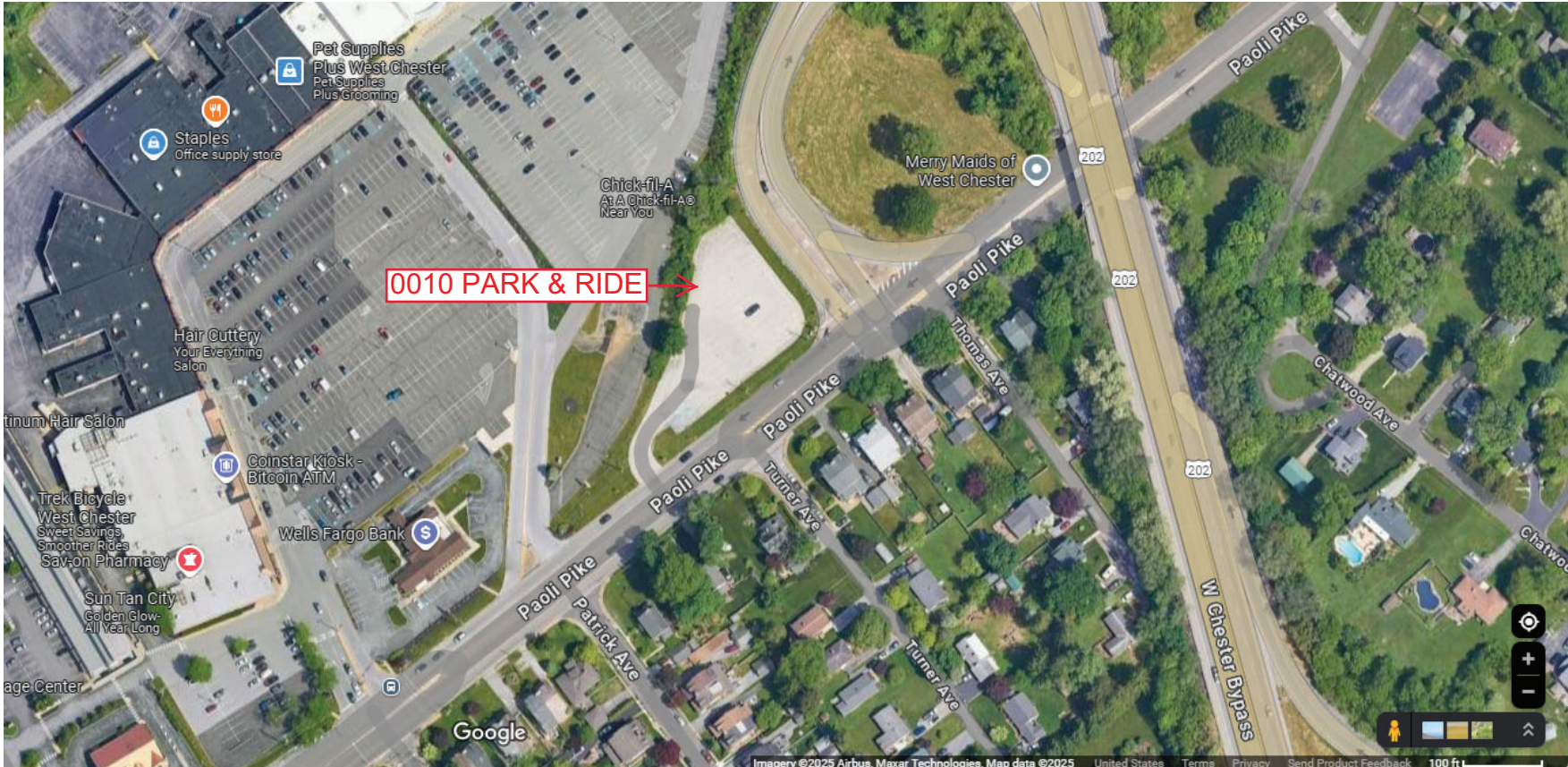
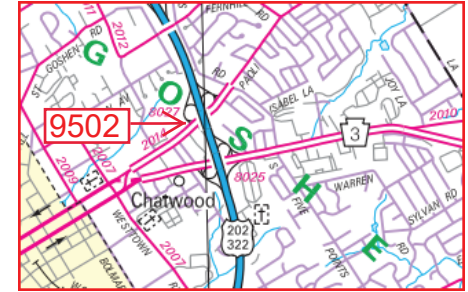
Ramp Segment Number and Ramp Segment Length Information:

Segment	Length	Segment	Length	Segment	Length	Segment	Length
0010	0330						

Primary Route Interchange Exit Number

Secondary Route Interchange Exit Number

PennDOT Type 10 Map View:



Last Date Modified: Feb 10, 2025



County: 15

# RMS Interchange Information

Bureau of Maintenance & Operations  
Asset Management Division

Print Form



Interchange Number: 9503

Interchange Name: PARK & RIDE

Intersecting SR's: Heritage Shopping Ctr (PRDR)

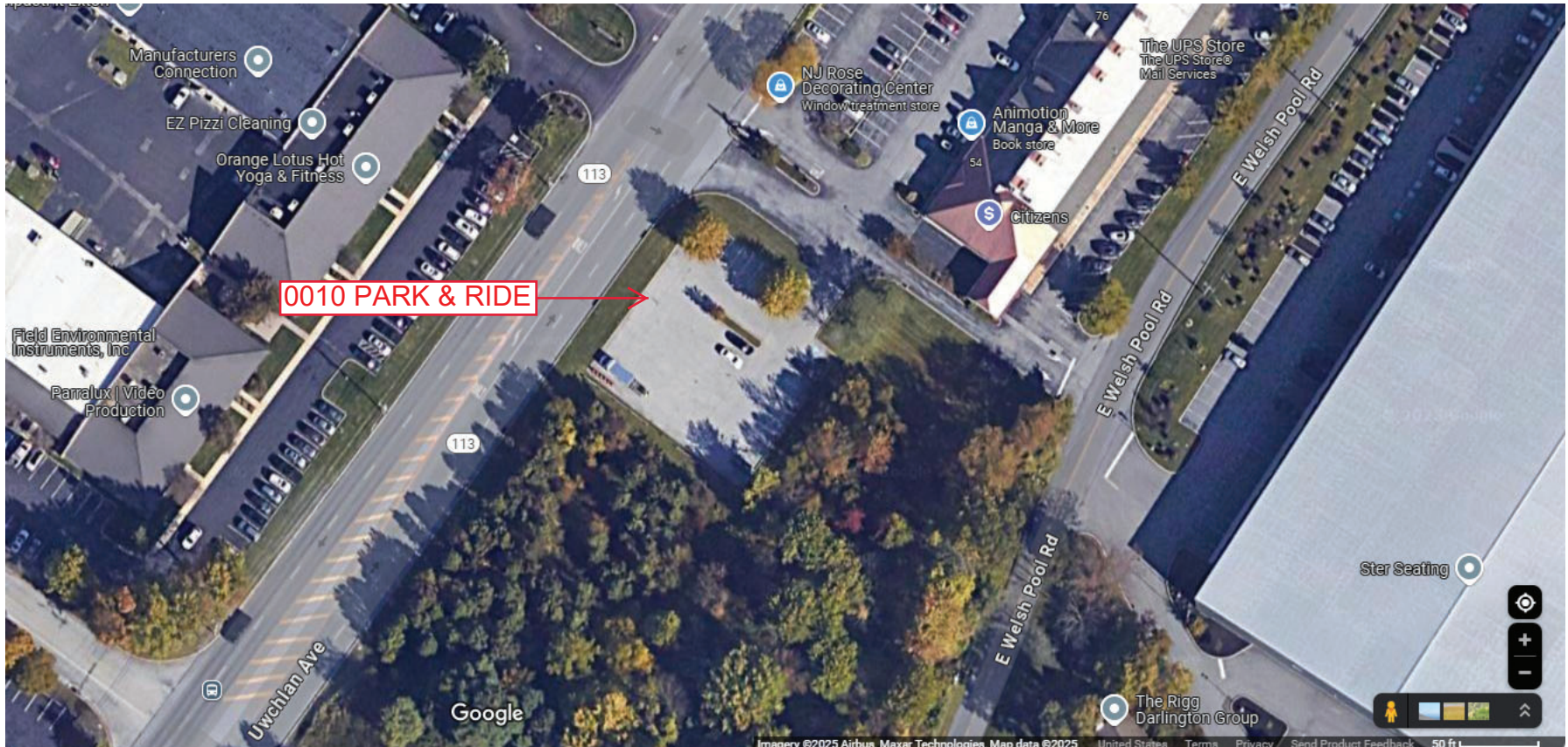
Ramp Segment Number and Ramp Segment Length Information:

Segment	Length	Segment	Length	Segment	Length	Segment	Length
0010	0330						

Primary Route Interchange Exit Number

Secondary Route Interchange Exit Number

PennDOT Type 10 Map View:



Last Date Modified: Feb 10, 2025



County: 15

# RMS Interchange Information

Bureau of Maintenance & Operations  
Asset Management Division

Print Form



Interchange Number: 9504

Interchange Name: PARK & RIDE

Intersecting SR's: T548 Matthews Rd

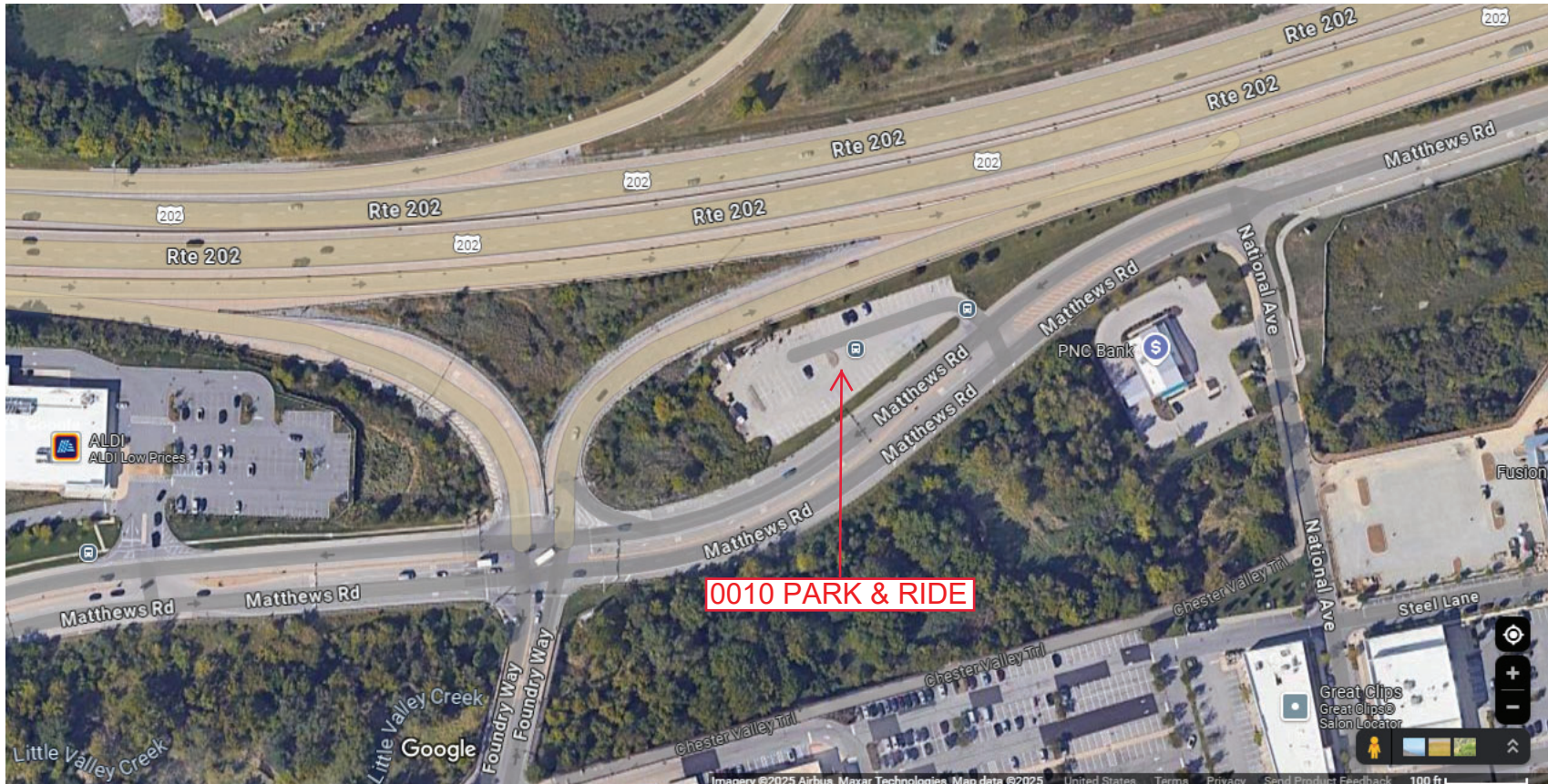
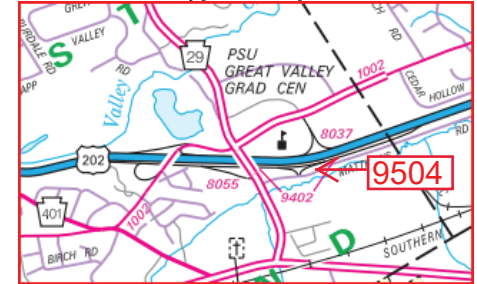
Ramp Segment Number and Ramp Segment Length Information:

Segment	Length	Segment	Length	Segment	Length	Segment	Length
0010	0580						

Primary Route Interchange Exit Number

Secondary Route Interchange Exit Number

PennDOT Type 10 Map View:



Last Date Modified: Feb 10, 2025



County: 15

# RMS Interchange Information

Print Form

Bureau of Maintenance & Operations  
Asset Management Division



Interchange Number: 9505

Interchange Name: EAST WHITELAND TWP PARK & RIDE

Intersecting SR's: US 30 Lincoln Hw

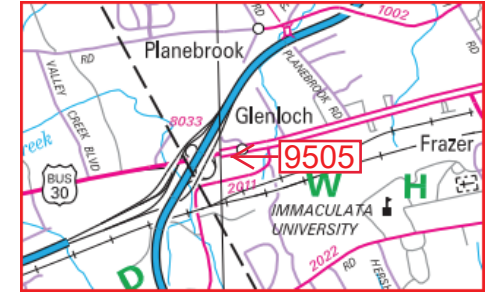
Ramp Segment Number and Ramp Segment Length Information:

Segment	Length	Segment	Length	Segment	Length	Segment	Length
0010	0970						

Primary Route Interchange Exit Number

Secondary Route Interchange Exit Number

PennDOT Type 10 Map View:



Last Date Modified:

Feb 10, 2025



County: 15

# RMS Interchange Information

Bureau of Maintenance & Operations  
Asset Management Division

Print Form



Interchange Number: 9506

Interchange Name: PARK & RIDE

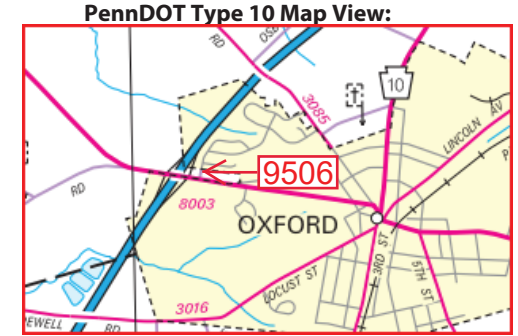
Intersecting SR's: PA 472 Lancaster Pk

Ramp Segment Number and Ramp Segment Length Information:

Segment	Length	Segment	Length	Segment	Length	Segment	Length
0010	0180						

Primary Route Interchange Exit Number

Secondary Route Interchange Exit Number



Last Date Modified: Feb 11, 2025



County: 15

# RMS Interchange Information

Bureau of Maintenance & Operations  
Asset Management Division

Print Form



Interchange Number: 9507

Interchange Name: PARK & RIDE

Intersecting SR's: PA 272 West Christina Rd

Ramp Segment Number and Ramp Segment Length Information:

Segment	Length	Segment	Length	Segment	Length	Segment	Length
0010	0175						

Primary Route Interchange Exit Number

Secondary Route Interchange Exit Number

PennDOT Type 10 Map View:



Last Date Modified: Feb 11, 2025