

County: 46

# RMS Interchange Information

Print Form

Interchange Number: 8002

Bureau of Maintenance & Operations  
Roadway Management Division



Interchange Name: KING OF PRUSSIA #26

Intersecting SR's: I-76 & US 202 Dekalb Pk

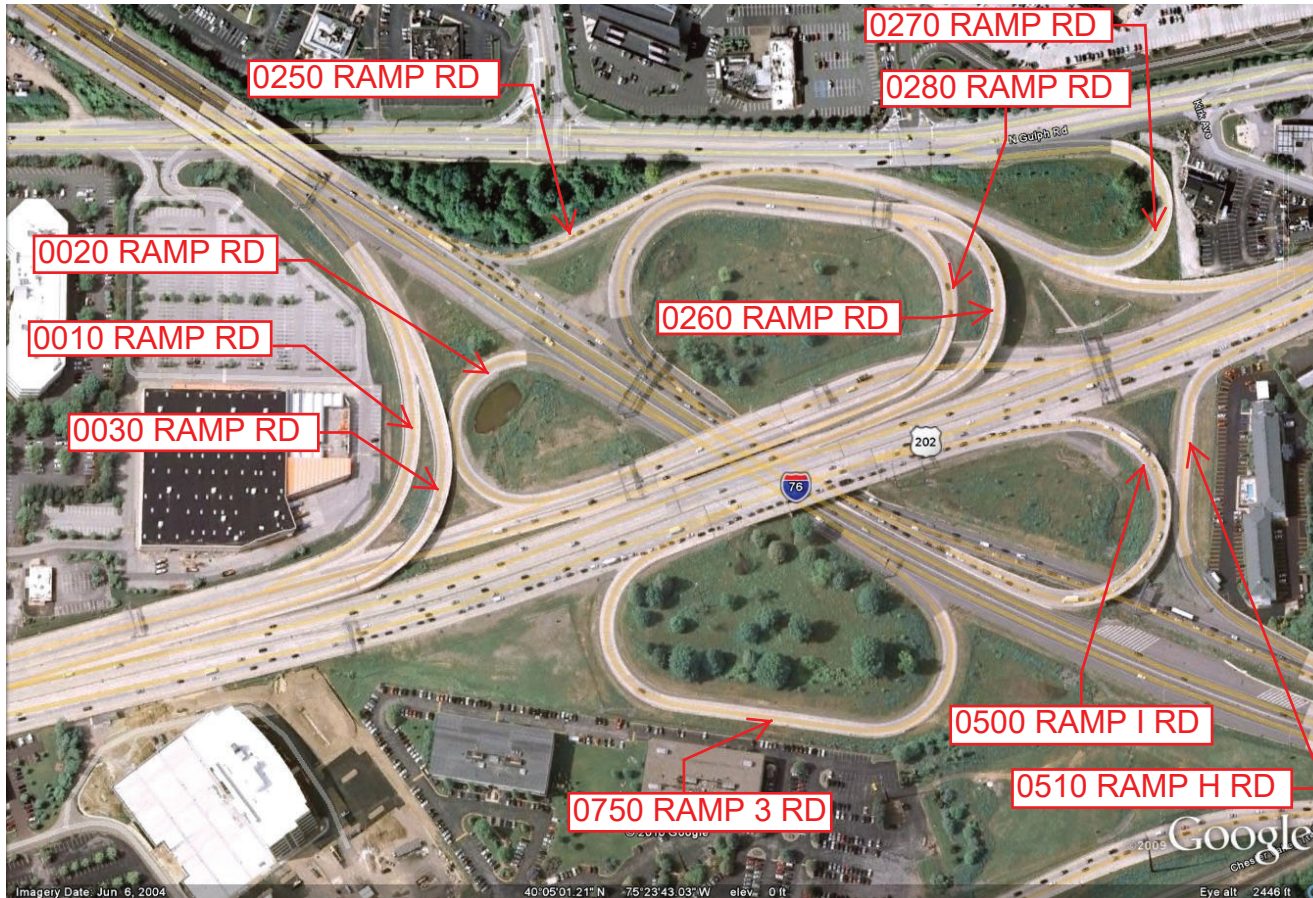
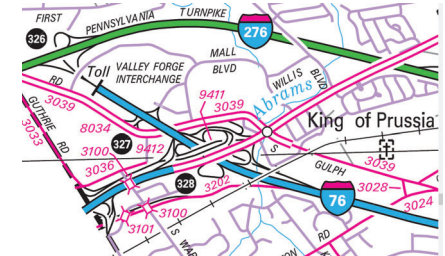
Ramp Segment Number and Ramp Segment Length Information:

Segment	Length	Segment	Length	Segment	Length	Segment	Length
0010	0688	0270	0407				
0020	0461	0280	1263				
0030	0981	0500	0930				
0250	1620	0510	0533				
0260	1659	0750	1186				

Primary Route Interchange Exit Number: 328

Secondary Route Interchange Exit Number: 328A/328B

PennDOT Type 10 Map View:



Last Date Modified:

Jul 17, 2020

County: 46

# RMS Interchange Information

Print Form

Interchange Number: 8003

Bureau of Maintenance & Operations  
Roadway Management Division



Interchange Name: BETZWOOD BR INT

Intersecting SR's: US 422 & PA 363 Ramp To Trooper Rd

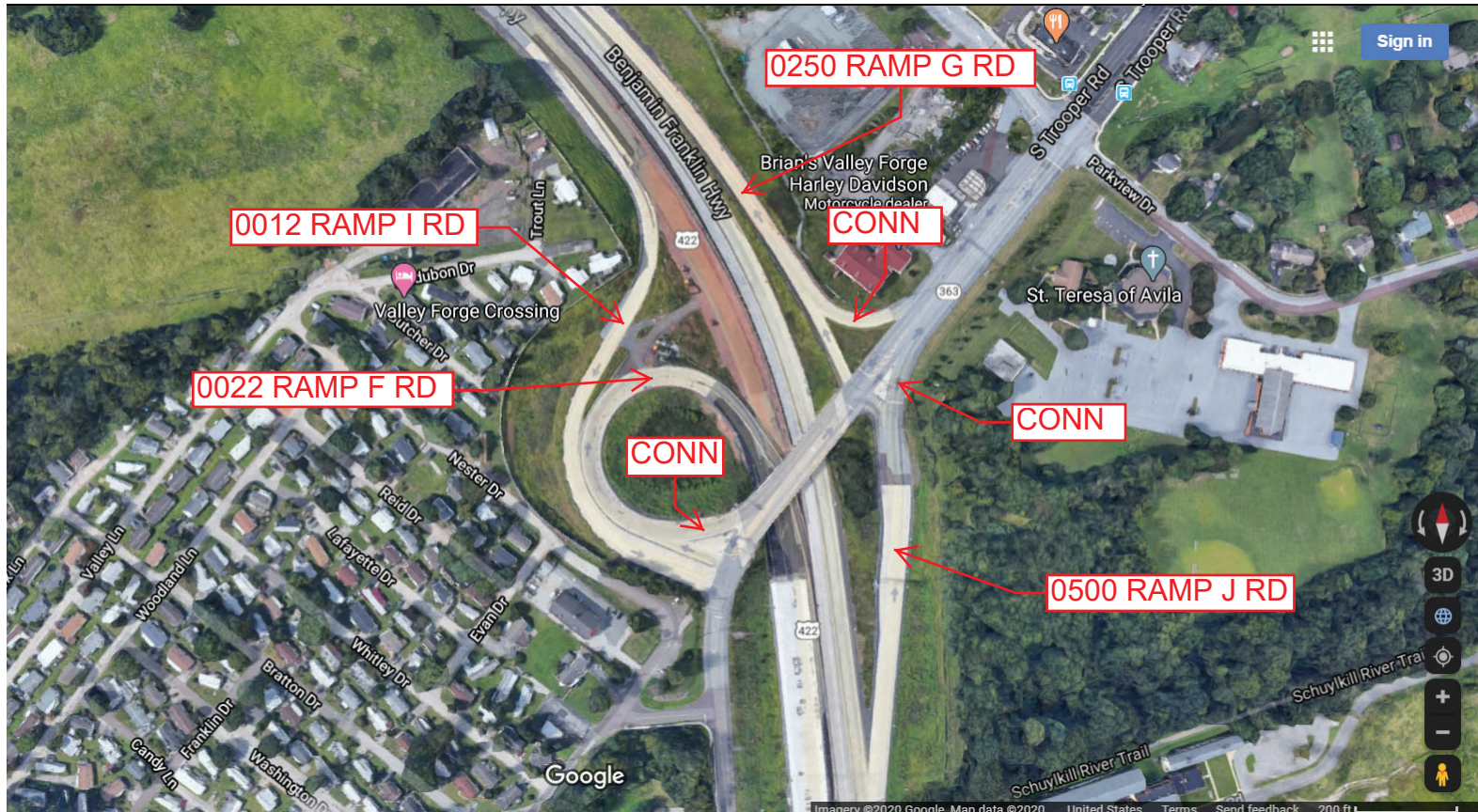
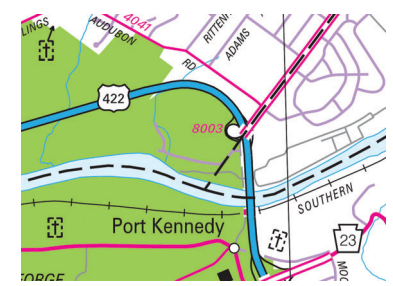
Ramp Segment Number and Ramp Segment Length Information:

Segment	Length	Segment	Length	Segment	Length	Segment	Length
0012	0970						
0022	0800						
0250	1085						
0500	0780						

Primary Route Interchange Exit Number

Secondary Route Interchange Exit Number

PennDOT Type 10 Map View:



Last Date Modified:

Jul 17, 2020

County: 46

# RMS Interchange Information

Print Form

Interchange Number: 8004

Bureau of Maintenance & Operations  
Roadway Management Division



Interchange Name: GULPH MILLS EXIT

Intersecting SR's: I-76, PA 320, SR 3037 Balligomingo Rd & SR 3039 Gulph Rd

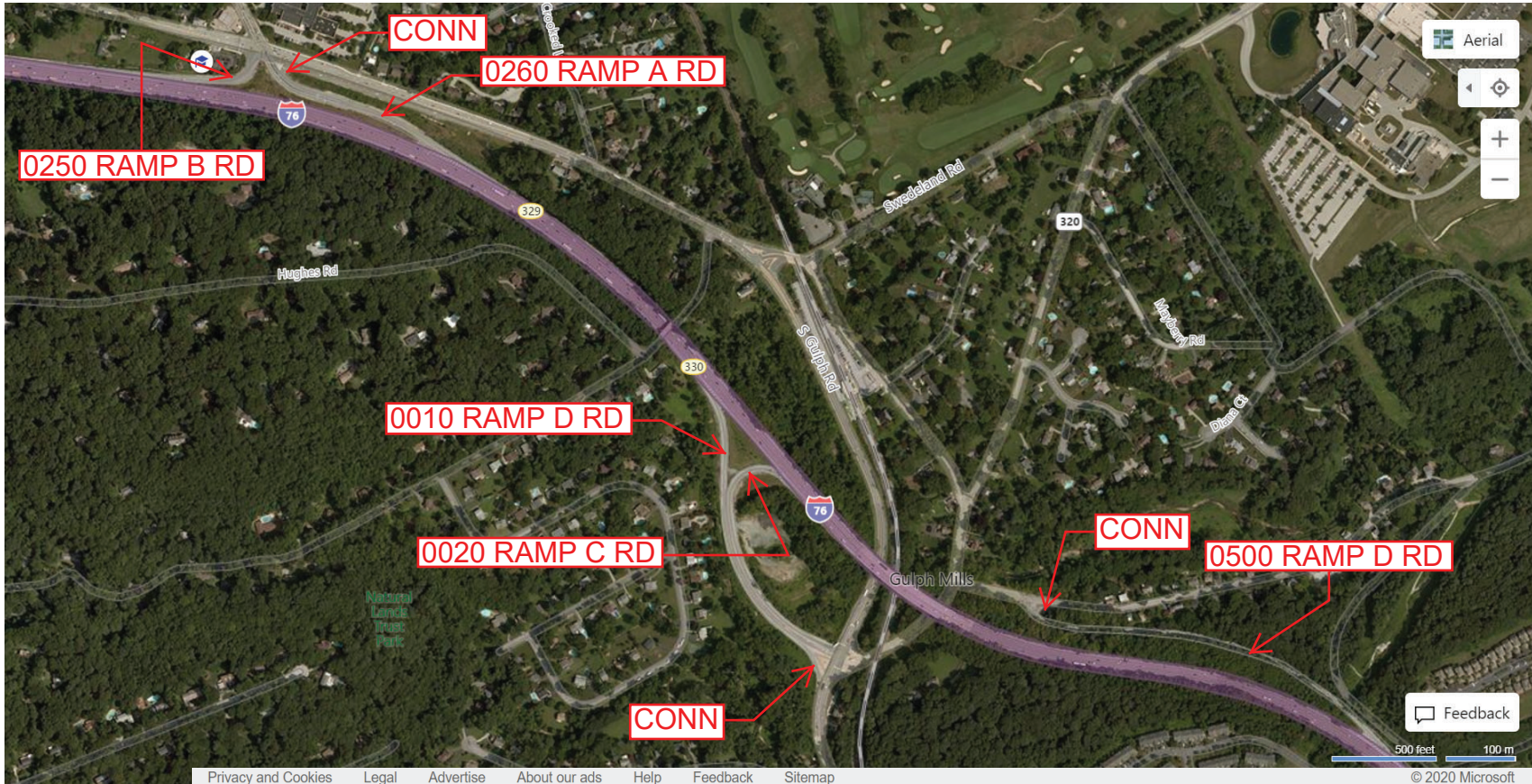
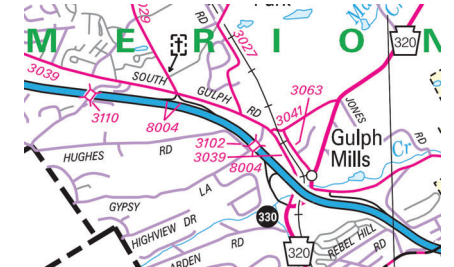
Ramp Segment Number and Ramp Segment Length Information:

Segment	Length	Segment	Length	Segment	Length	Segment	Length
0010	1460						
0020	1271						
0250	0369						
0260	1000						
0500	1890						

Primary Route Interchange Exit Number: 329

Secondary Route Interchange Exit Number: 330

PennDOT Type 10 Map View:



Last Date Modified: Jul 17, 2020

County: 46

# RMS Interchange Information

Print Form

Interchange Number: 8006

Bureau of Maintenance & Operations  
Roadway Management Division



Interchange Name: BLUE ROUTE INT

Intersecting SR's: I-76, I-476 & SR 3016 Matsonford Rd

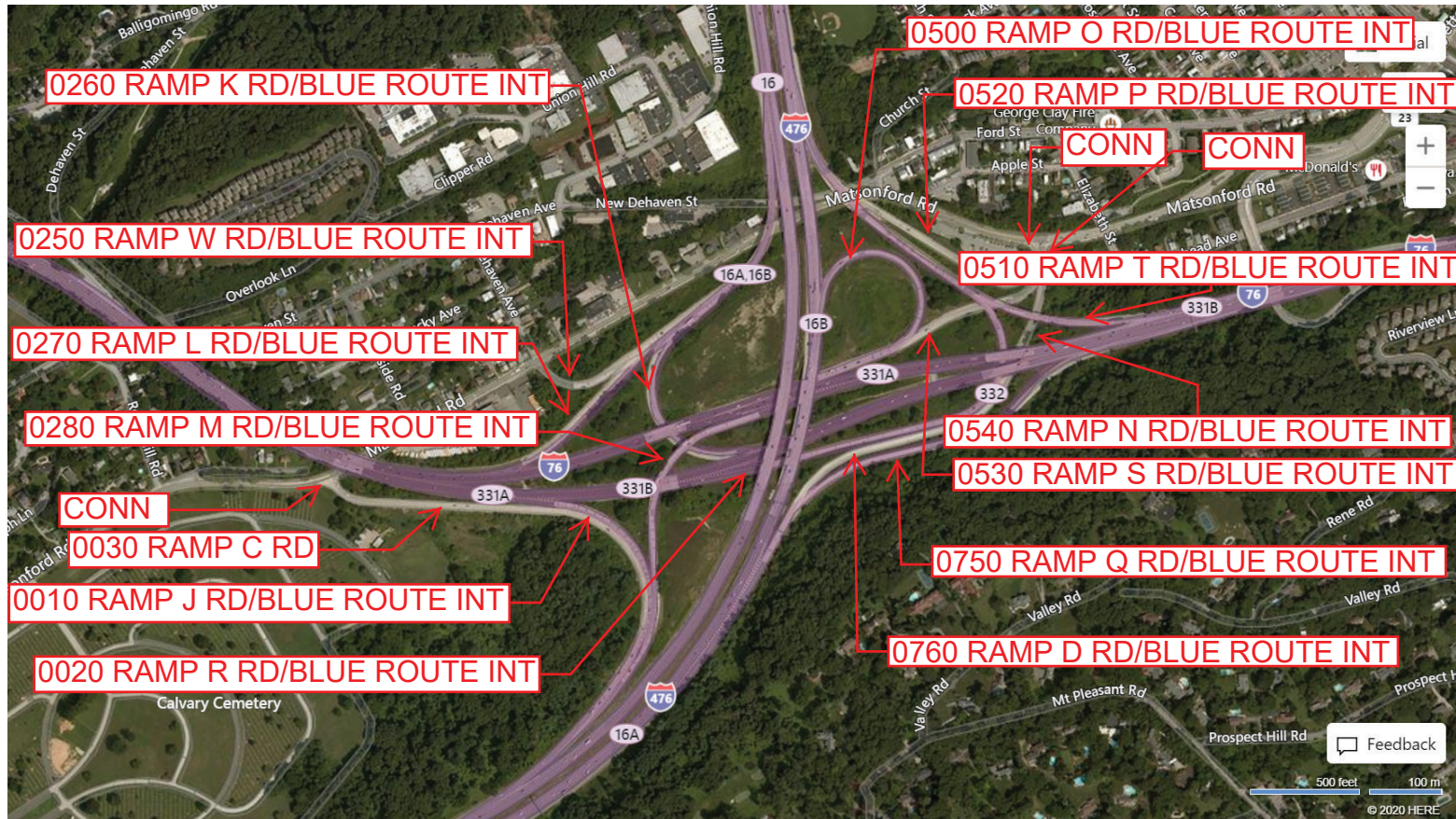
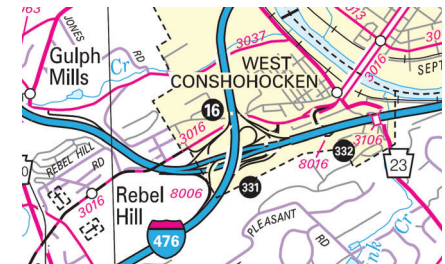
Ramp Segment Number and Ramp Segment Length Information:

Segment	Length	Segment	Length	Segment	Length	Segment	Length
0010	0265	0270	0740	0530	1221		
0020	1670	0280	2100	0540	0630		
0030	2363	0500	0794	0750	1397		
0250	1700	0510	1418	0760	1520		
0260	0760	0520	1430				

Primary Route Interchange Exit Number: 331A/331B

Secondary Route Interchange Exit Number: 16A/16B

PennDOT Type 10 Map View:



Last Date Modified:

Sep 16, 2020

County: 46

# RMS Interchange Information

Print Form

Bureau of Maintenance & Operations  
Roadway Management Division



Interchange Number: 8007

Interchange Name: PHOENIXVILLE INT

Intersecting SR's: US 422 & PA 29 Phoenixville Collegeville Rd

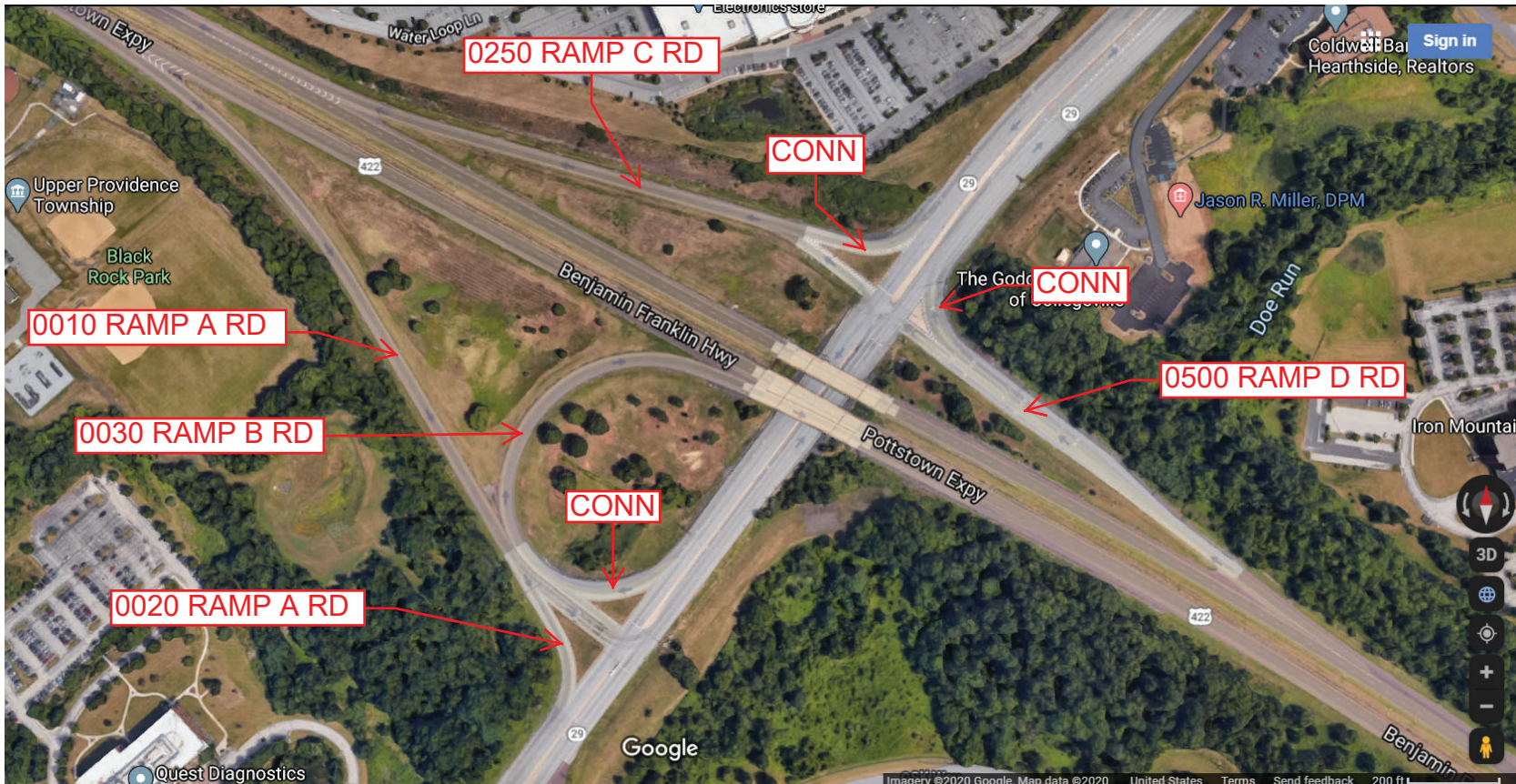
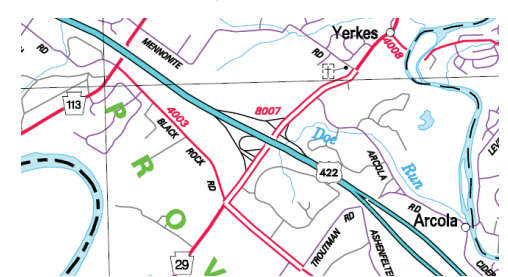
Ramp Segment Number and Ramp Segment Length Information:

Segment	Length	Segment	Length	Segment	Length	Segment	Length
0010	1599						
0020	0200						
0030	1027						
0250	1175						
0500	0928						

Primary Route  
Interchange Exit  
Number

Secondary Route  
Interchange Exit  
Number

PennDOT Type 10 Map View:



Last Date Modified:

Jul 17, 2020

County: 46

# RMS Interchange Information

Print Form

Interchange Number: 8008

Bureau of Maintenance & Operations  
Roadway Management Division



Interchange Name: GLADWYNE INTERCH #30

Intersecting SR's: I-76 & SR 3050 Hollow Rd

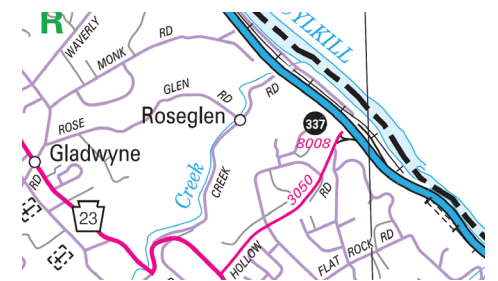
Ramp Segment Number and Ramp Segment Length Information:

Segment	Length	Segment	Length	Segment	Length	Segment	Length
0500	1390						
0750	0440						

Primary Route Interchange Exit Number: 337

Secondary Route Interchange Exit Number

PennDOT Type 10 Map View:



Last Date Modified: Jul 17, 2020

County: 46

# RMS Interchange Information

Print Form

Interchange Number: 8009

Bureau of Maintenance & Operations  
Roadway Management Division



Interchange Name: ROYERSFORD INT

Intersecting SR's: US 422 & SR 4014 Township Line Rd

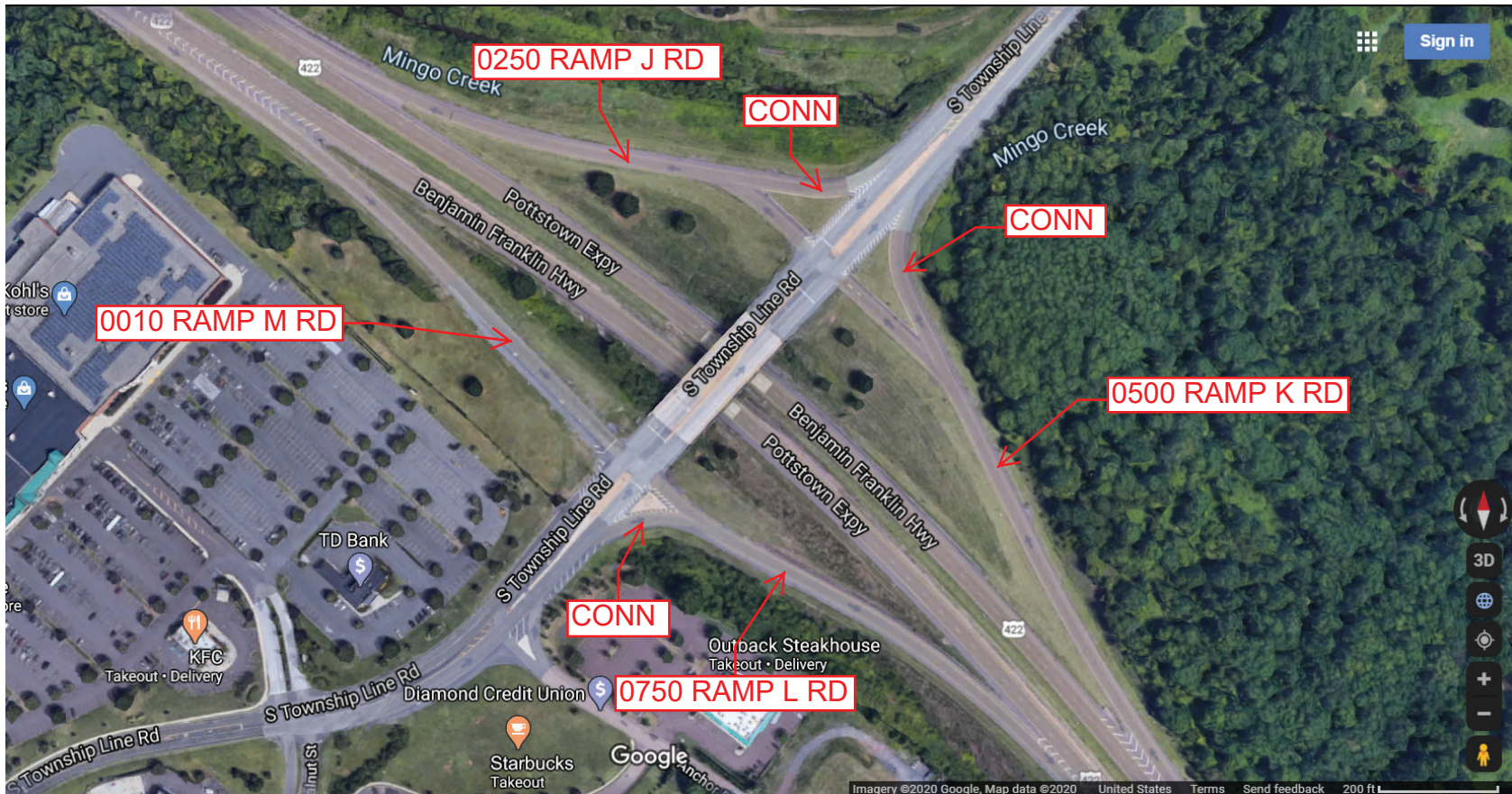
Ramp Segment Number and Ramp Segment Length Information:

Segment	Length	Segment	Length	Segment	Length	Segment	Length
0010	0810						
0250	0740						
0500	0912						
0750	0785						

Primary Route Interchange Exit Number

Secondary Route Interchange Exit Number

PennDOT Type 10 Map View:



Last Date Modified:

Jul 17, 2020

County: 46

# RMS Interchange Information

Print Form

Bureau of Maintenance & Operations  
Roadway Management Division



Interchange Number: 8010

Interchange Name: BELMONT INTERCH #31

Intersecting SR's: I-76, SR 3045 Belmont Av & TWP Green Ln

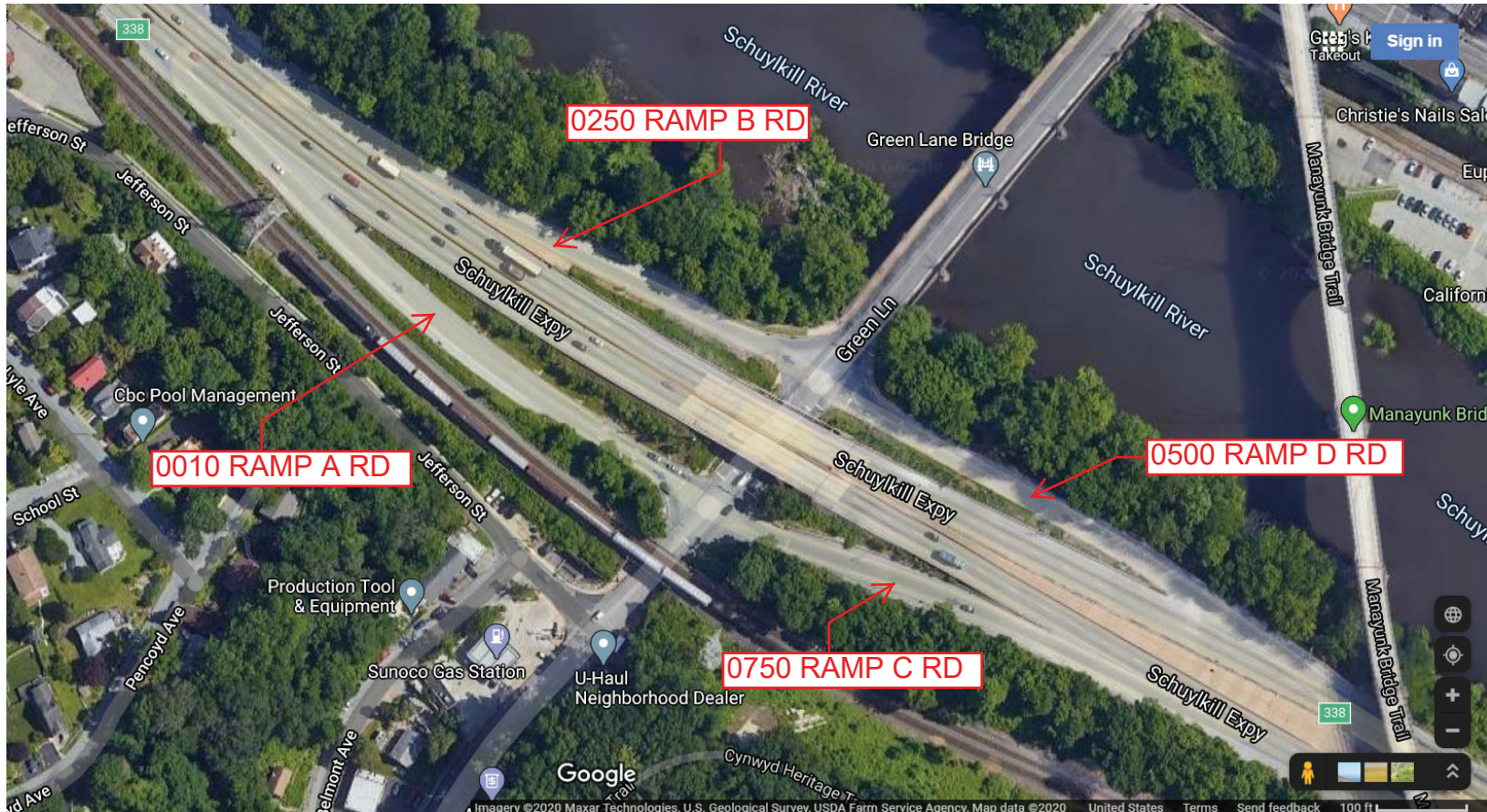
Ramp Segment Number and Ramp Segment Length Information:

Segment	Length	Segment	Length	Segment	Length	Segment	Length
0010	0525						
0250	0430						
0500	0429						
0750	0370						

Primary Route Interchange Exit Number: 338

Secondary Route Interchange Exit Number

PennDOT Type 10 Map View:



Last Date Modified:

May 15, 2020



County: 46

# RMS Interchange Information

Print Form

Interchange Number: 8011

Bureau of Maintenance & Operations  
Roadway Management Division



Interchange Name: LIMERICK INT

Intersecting SR's: US 422 & SR 4022 Lewis Rd

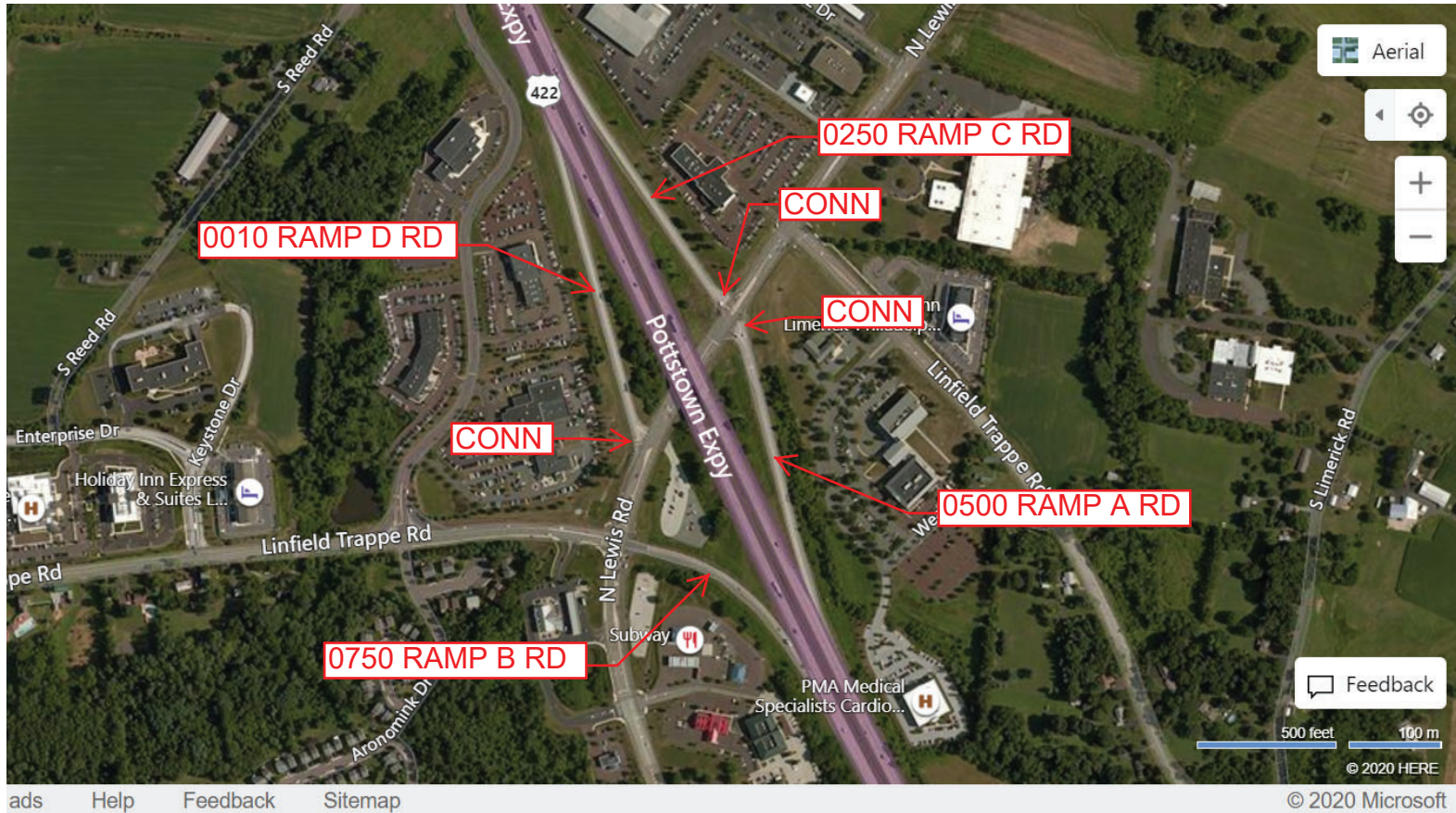
Ramp Segment Number and Ramp Segment Length Information:

Segment	Length	Segment	Length	Segment	Length	Segment	Length
0010	1118						
0250	1053						
0500	0965						
0750	0800						

Primary Route Interchange Exit Number

Secondary Route Interchange Exit Number

PennDOT Type 10 Map View:



Last Date Modified: Jul 17, 2020

County: 46

# RMS Interchange Information

Print Form

Interchange Number: 8012

Bureau of Maintenance & Operations  
Roadway Management Division



Interchange Name: PENCOYD INTERCH #33

Intersecting SR's: I-76 & US 1 City Av

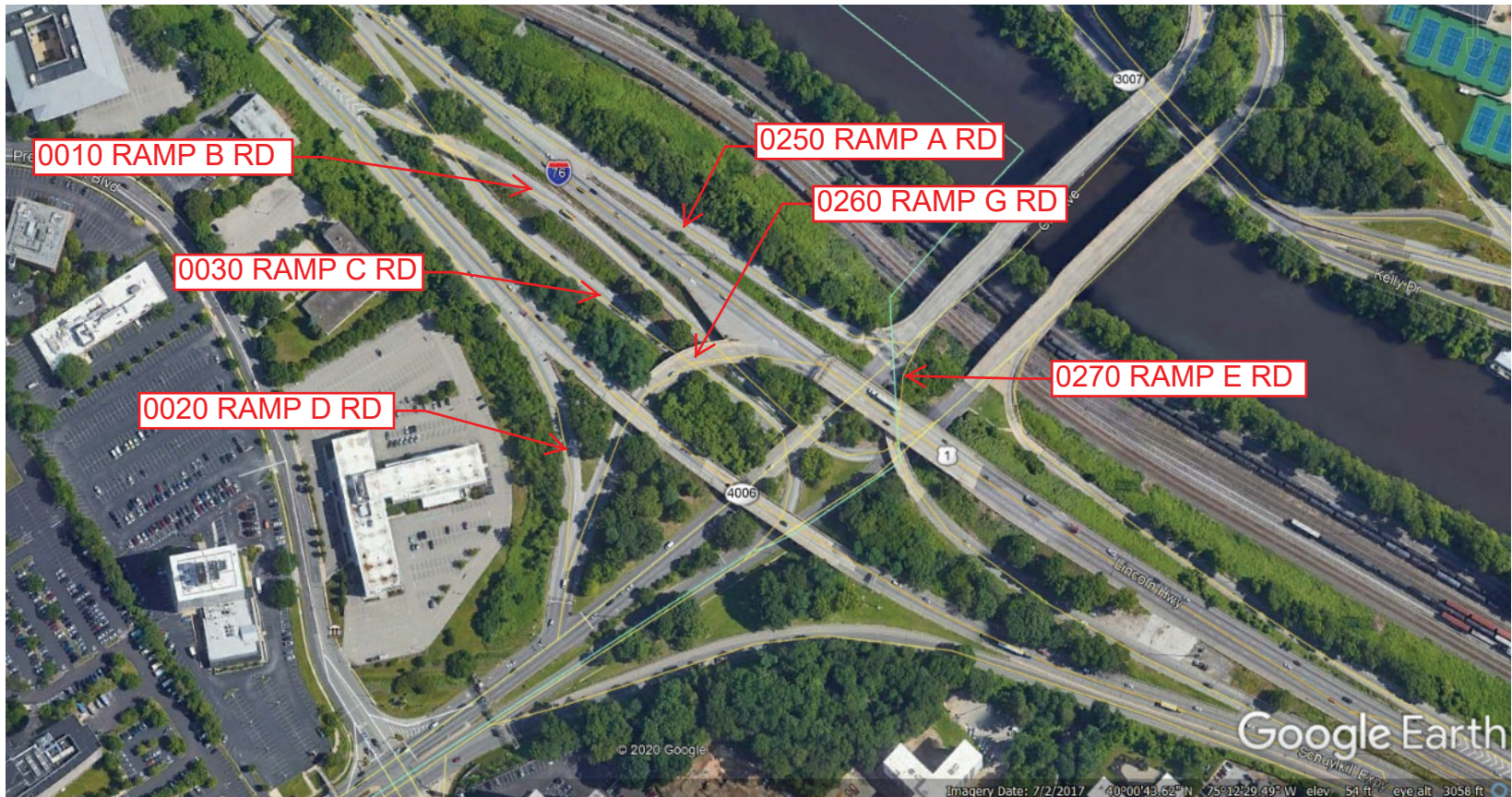
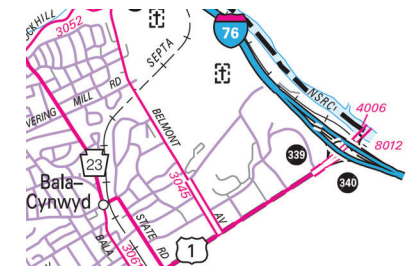
Ramp Segment Number and Ramp Segment Length Information:

Segment	Length	Segment	Length	Segment	Length	Segment	Length
0010	1238	0270	0220				
0020	0502						
0030	1324						
0250	0666						
0260	0458						

Primary Route Interchange Exit Number: 339

Secondary Route Interchange Exit Number: 340A

PennDOT Type 10 Map View:



Last Date Modified:

May 18, 2020

County: 46

# RMS Interchange Information

Print Form

Interchange Number: 8014

Bureau of Maintenance & Operations  
Roadway Management Division



Interchange Name: RIDGE PIKE INT

Intersecting SR's: I-476, SR 3015 Chemical Rd & SR 3056 Ridge Pk

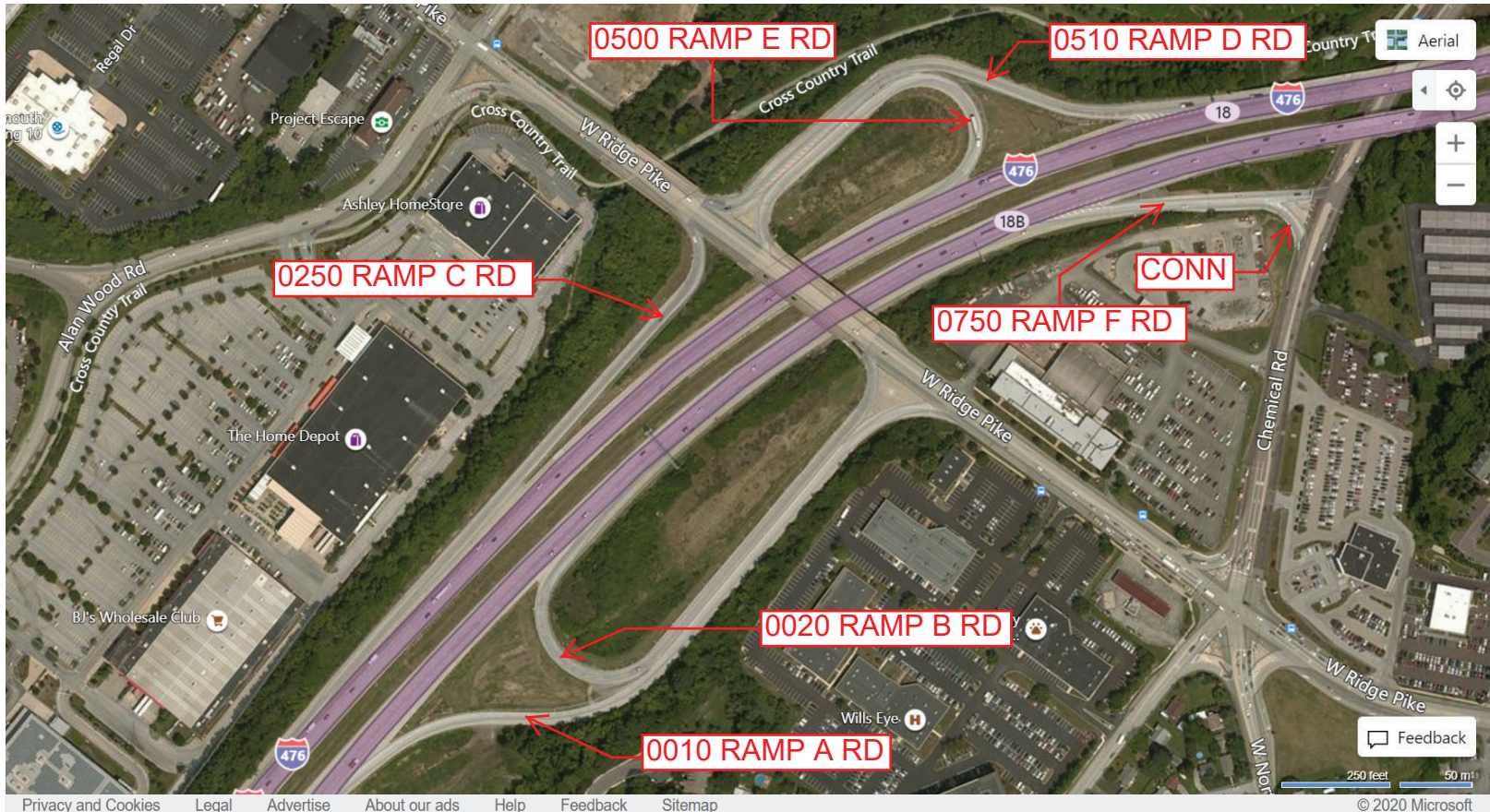
Ramp Segment Number and Ramp Segment Length Information:

Segment	Length	Segment	Length	Segment	Length	Segment	Length
0010	1595	0750	0495				
0020	1362						
0250	0734						
0500	0870						
0510	1114						

Primary Route Interchange Exit Number: 18A

Secondary Route Interchange Exit Number: 18B

PennDOT Type 10 Map View:



Last Date Modified: Jul 17, 2020

County: 46

# RMS Interchange Information

Print Form

Interchange Number: 8015

Bureau of Maintenance & Operations  
Roadway Management Division



Interchange Name: ARM & HAMMER INT

Intersecting SR's: US 422 & SR 4036/TWP Armand Hammer BL

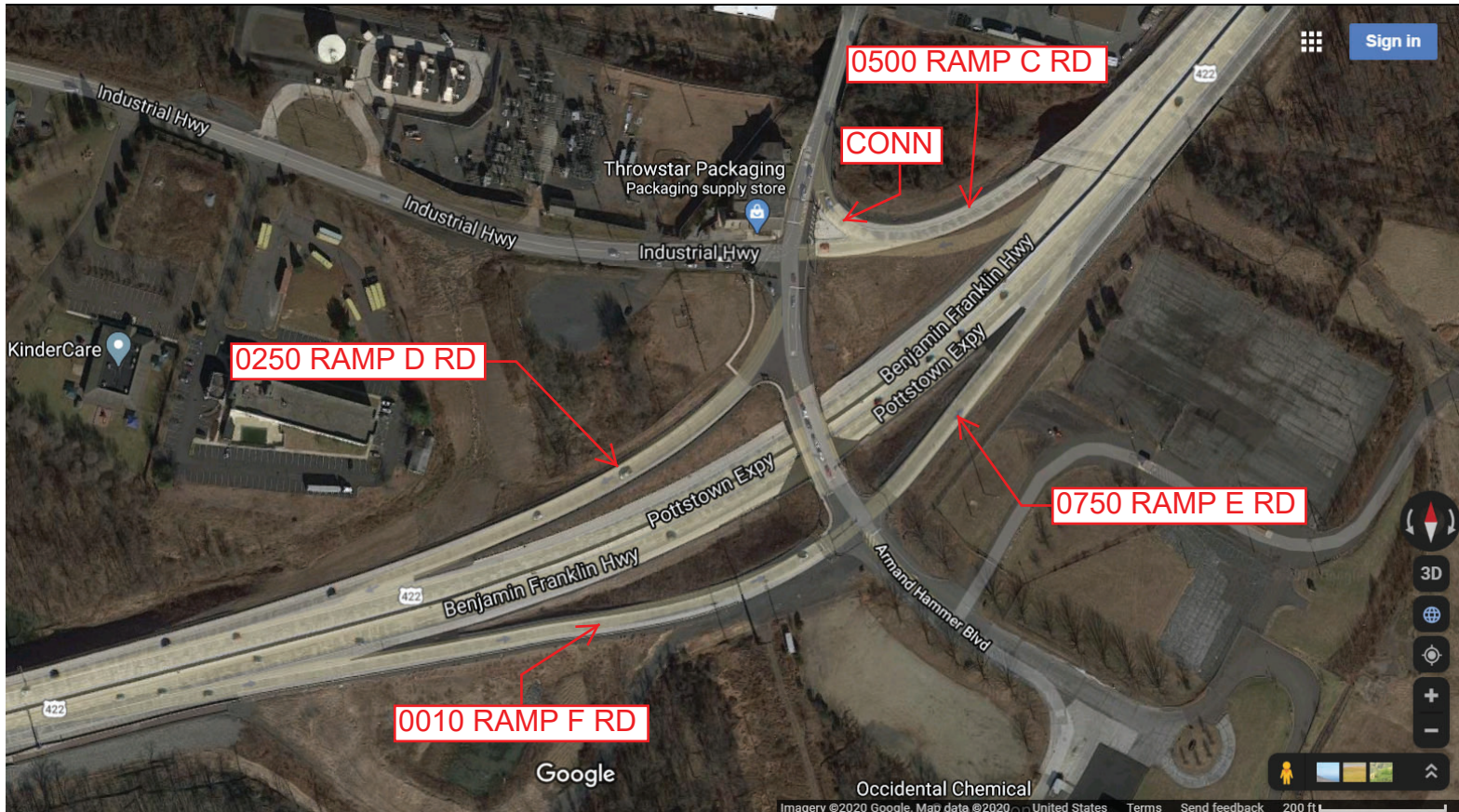
Ramp Segment Number and Ramp Segment Length Information:

Segment	Length	Segment	Length	Segment	Length	Segment	Length
0010	0820						
0250	0680						
0500	0440						
0750	0400						

Primary Route Interchange Exit Number

Secondary Route Interchange Exit Number

PennDOT Type 10 Map View:



Last Date Modified:

Jul 17, 2020

County: 46

# RMS Interchange Information

Print Form

Bureau of Maintenance & Operations  
Roadway Management Division



Interchange Number: 8016

Interchange Name: MATSONFORD RD INT

Intersecting SR's: I-76 & SR 3016 Matsonford Rd

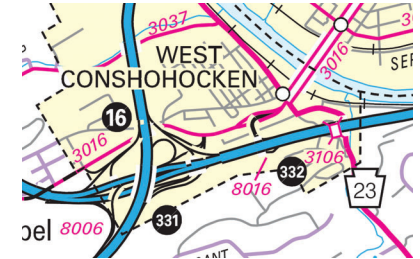
Ramp Segment Number and Ramp Segment Length Information:

Segment	Length	Segment	Length	Segment	Length	Segment	Length
0500	1350						
0510	1499						

Primary Route Interchange Exit Number: 332

Secondary Route Interchange Exit Number

PennDOT Type 10 Map View:



Last Date Modified: Jul 17, 2020

County: 46

# RMS Interchange Information

Print Form

Interchange Number: 8017

Bureau of Maintenance & Operations  
Roadway Management Division



Interchange Name: BRIDGE PORT

Intersecting SR's: SR 3020 Dekalb Pk & SR 3021 Schuylkill Py

Ramp Segment Number and Ramp Segment Length Information:

Segment	Length	Segment	Length	Segment	Length	Segment	Length
0250	0721						
0500	0890						

Primary Route Interchange Exit Number

Secondary Route Interchange Exit Number

PennDOT Type 10 Map View:



Last Date Modified: Jul 20, 2020

County: 46

# RMS Interchange Information

Print Form

Bureau of Maintenance & Operations  
Asset Management Division



Interchange Number: 8018

Interchange Name: VALLEY FORGE INT

Intersecting SR's: US 422 & PA 23 Valley Forge Rd

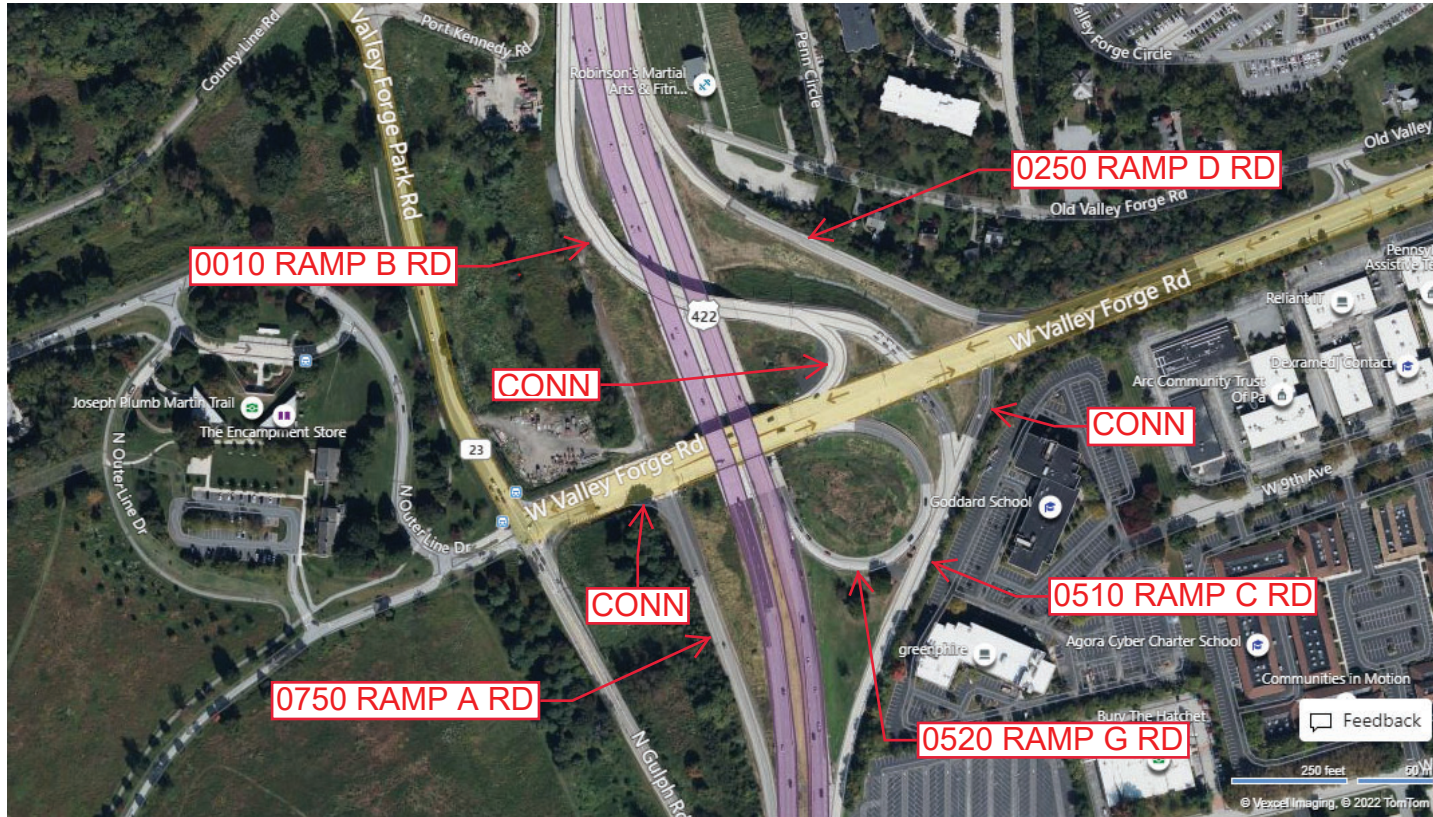
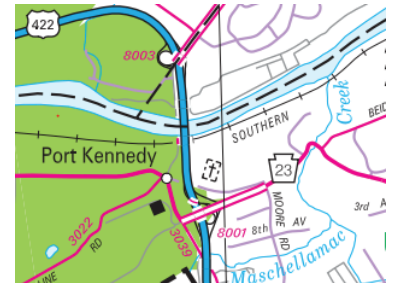
Ramp Segment Number and Ramp Segment Length Information:

Segment	Length	Segment	Length	Segment	Length	Segment	Length
0010	1157						
0250	0839						
0510	0951						
0520	0637						
0750	0828						

Primary Route Interchange Exit Number

Secondary Route Interchange Exit Number

PennDOT Type 10 Map View:



Last Date Modified:

Mar 18, 2022

County: 46

# RMS Interchange Information

Print Form

Interchange Number: 8019

Bureau of Maintenance & Operations  
Roadway Management Division



Interchange Name: MONTGOMERYVILLE

Intersecting SR's: US 202 & PA 309 Bethlehem Pk

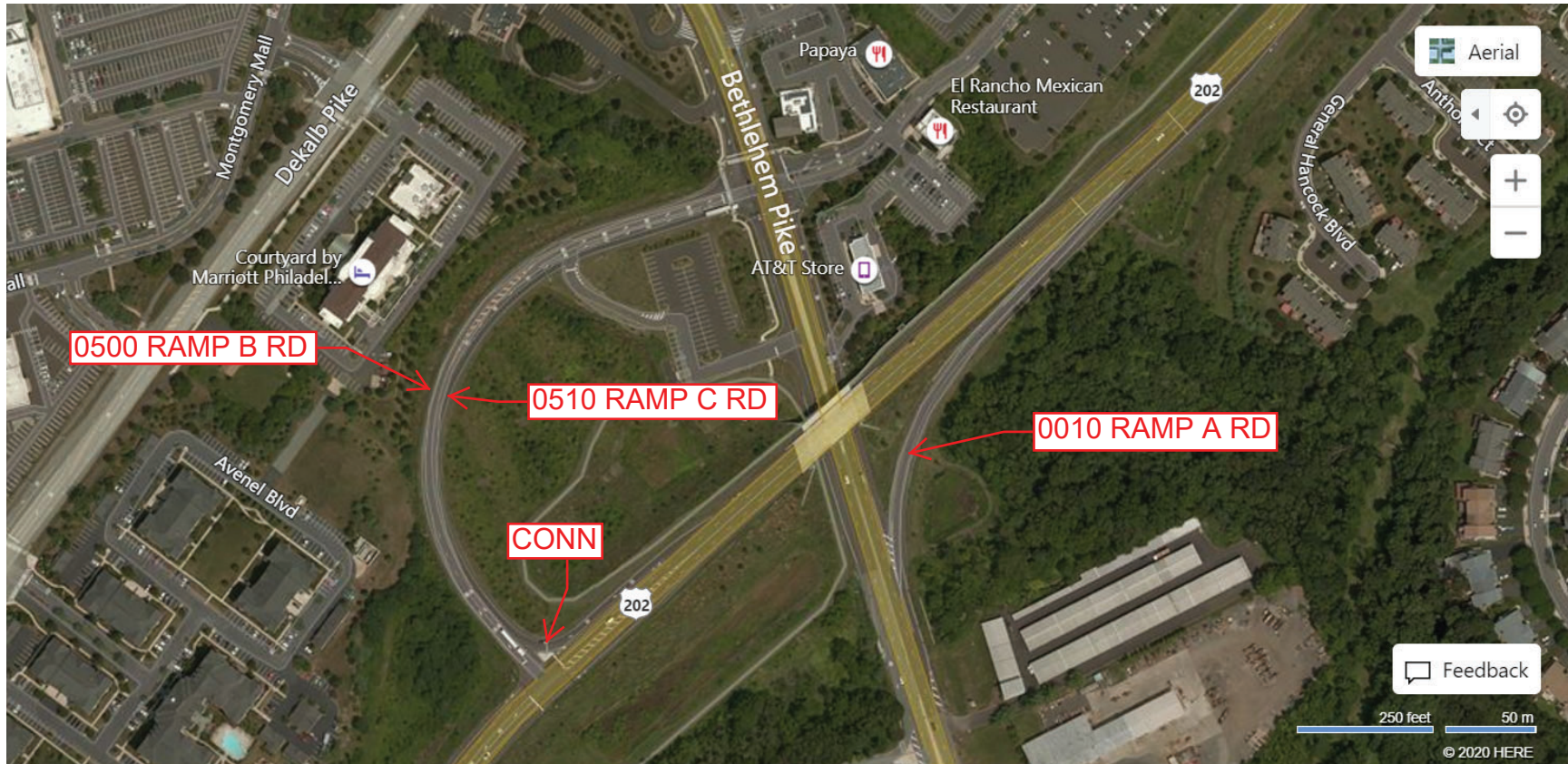
Ramp Segment Number and Ramp Segment Length Information:

Segment	Length	Segment	Length	Segment	Length	Segment	Length
0010	0535						
0500	1333						
0510	1288						

Primary Route  
Interchange Exit  
Number

Secondary Route  
Interchange Exit  
Number

PennDOT Type 10 Map View:



Last Date Modified:

Jul 20, 2020



County: 46

# RMS Interchange Information

Print Form

Bureau of Maintenance & Operations  
Asset Management Division



Interchange Number: 8020

Interchange Name: OAKS INT

Intersecting SR's: US 422, SR 4002 EGYPT Rd & SR 4003 Black Rock Rd

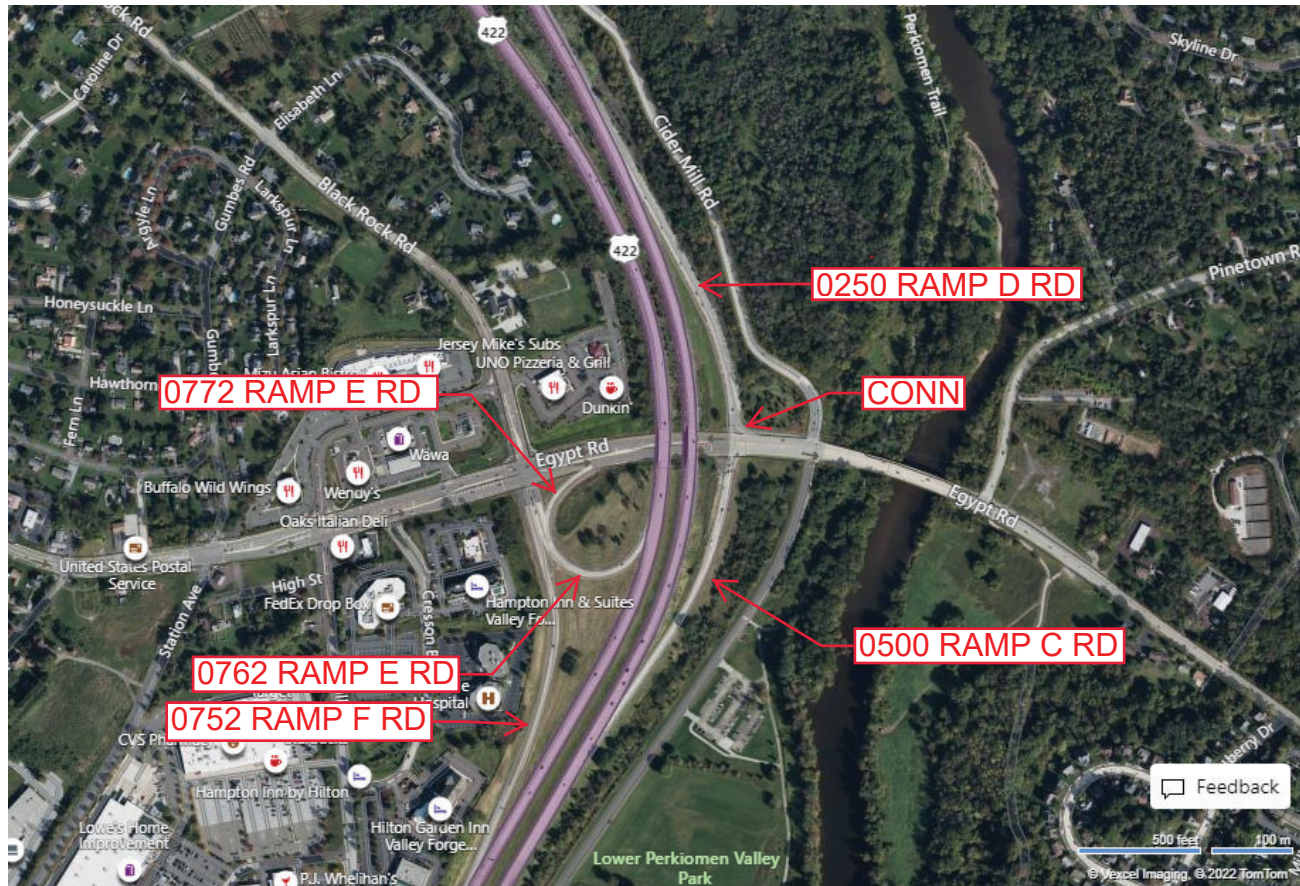
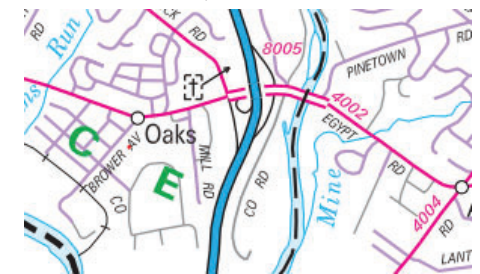
Ramp Segment Number and Ramp Segment Length Information:

Segment	Length	Segment	Length	Segment	Length	Segment	Length
0250	1162						
0500	1146						
0752	1615						
0762	0755						
0772	0225						

Primary Route  
Interchange Exit  
Number

Secondary Route  
Interchange Exit  
Number

PennDOT Type 10 Map View:



© 2022 Microsoft

Last Date Modified:

Mar 18, 2022

County: 46

# RMS Interchange Information

Print Form

Interchange Number: 8022

Bureau of Maintenance & Operations  
Asset Management Division



Interchange Name: SANATOGA INT

Intersecting SR's: US 422, SR 4026 Evergreen Rd & SR 4046 Township Rd

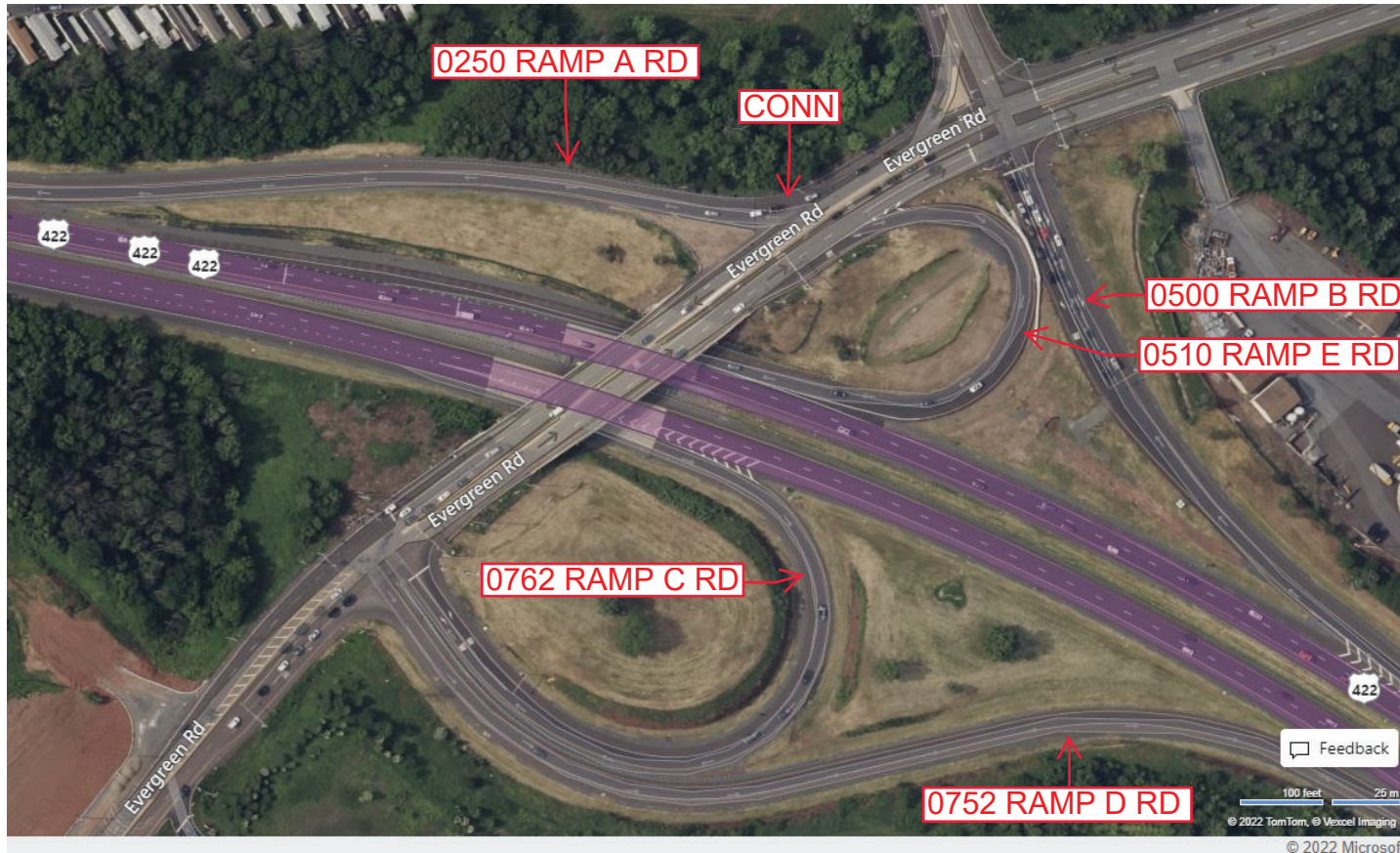
Ramp Segment Number and Ramp Segment Length Information:

Segment	Length	Segment	Length	Segment	Length	Segment	Length
0250	0906						
0500	0745						
0510	0460						
0752	1467						
0762	0939						

Primary Route Interchange Exit Number

Secondary Route Interchange Exit Number

PennDOT Type 10 Map View:



Feedback

100 feet 25 m

© 2022 TomTom, © Vexcel Imaging © 2022 Microsoft

Last Date Modified: Dec 29, 2022

County: 46

# RMS Interchange Information

Print Form

Interchange Number: 8023

Bureau of Maintenance & Operations  
Roadway Management Division



Interchange Name: STOWE INT

Intersecting SR's: US 422 & SR 4045 Old Reading Pk

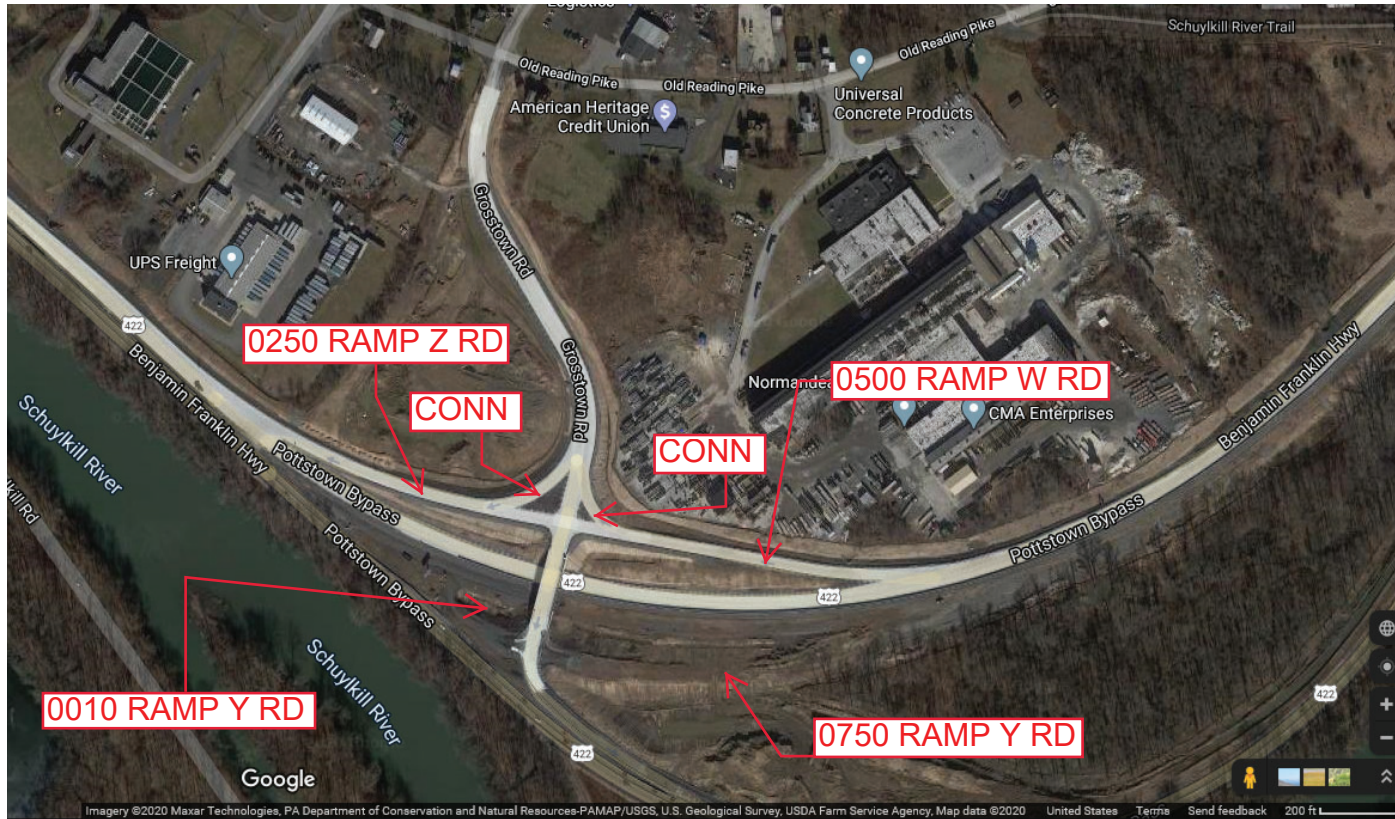
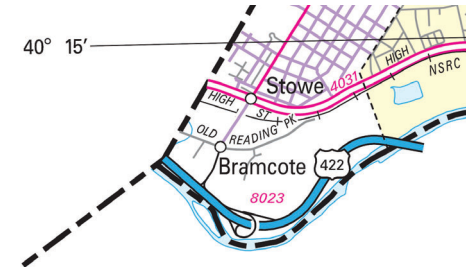
Ramp Segment Number and Ramp Segment Length Information:

Segment	Length	Segment	Length	Segment	Length	Segment	Length
0010	0800						
0250	0750						
0500	0820						
0750	1000						

Primary Route  
Interchange Exit  
Number

Secondary Route  
Interchange Exit  
Number

PennDOT Type 10 Map View:



Last Date Modified: Jul 20, 2020

County: 46

# RMS Interchange Information

Print Form

Interchange Number: 8024

Bureau of Maintenance & Operations  
Roadway Management Division



Interchange Name: MID COUNTY INT

Intersecting SR's: I-476, SR 3007, SR 3015 & SR 3053 Germantown Pk

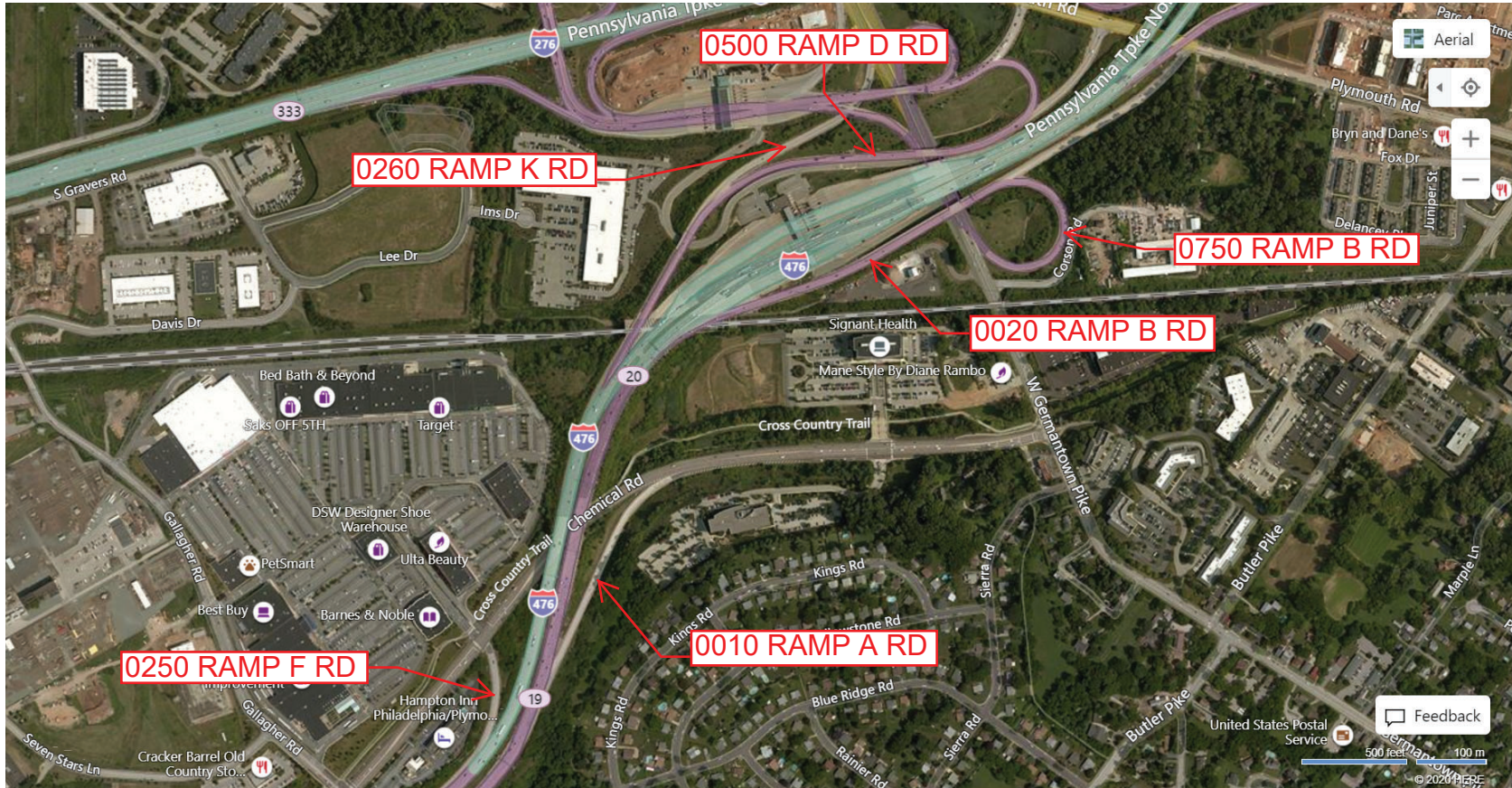
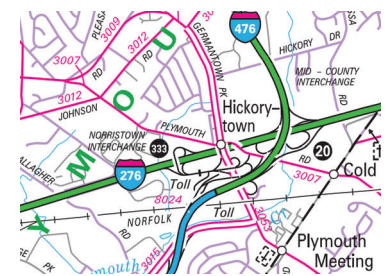
Ramp Segment Number and Ramp Segment Length Information:

Segment	Length	Segment	Length	Segment	Length	Segment	Length
0010	0947	0750	0865				
0020	2482						
0250	0450						
0260	0980						
0500	2907						

Primary Route Interchange Exit Number: 19

Secondary Route Interchange Exit Number: 20

PennDOT Type 10 Map View:



Last Date Modified:

Jul 20, 2020

County: 46

# RMS Interchange Information

Print Form

Interchange Number: 8025

Bureau of Maintenance & Operations  
Roadway Management Division



Interchange Name: EASTON RD INT

Intersecting SR's: PA 309 Fort Washington Ex & PA 152 Easton Rd

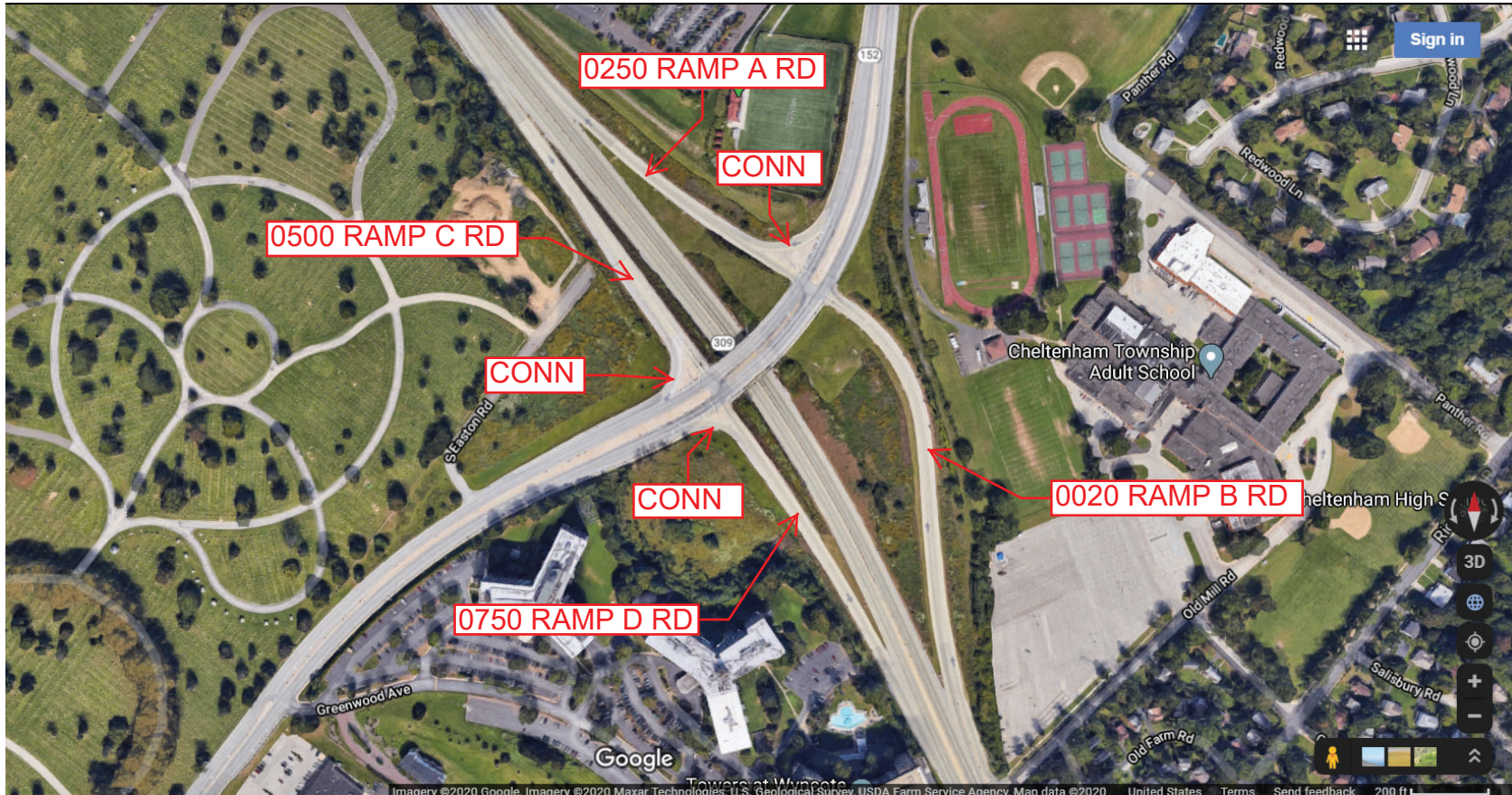
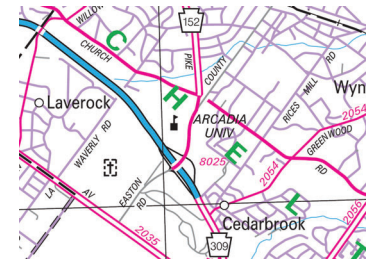
Ramp Segment Number and Ramp Segment Length Information:

Segment	Length	Segment	Length	Segment	Length	Segment	Length
0020	1135						
0250	0770						
0500	0931						
0750	0708						

Primary Route  
Interchange Exit  
Number

Secondary Route  
Interchange Exit  
Number

PennDOT Type 10 Map View:



Last Date Modified:

Jul 20, 2020

County: 46

# RMS Interchange Information

Print Form

Interchange Number: 8027

Bureau of Maintenance & Operations  
Roadway Management Division



Interchange Name: PAPER MILL RD INT

Intersecting SR's: PA 309 Fort Washington Ex & SR 2032 Paper Mill Rd

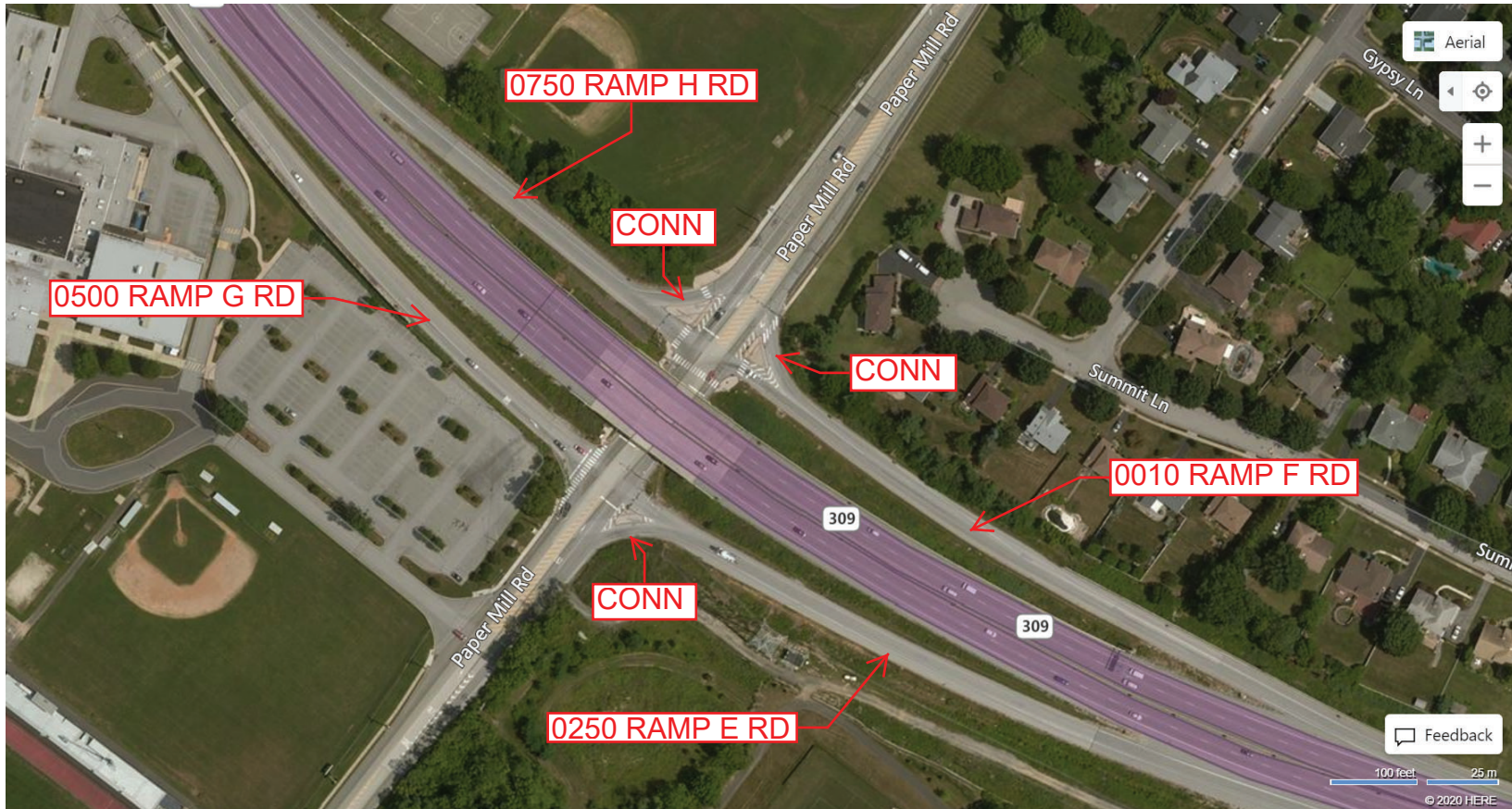
Ramp Segment Number and Ramp Segment Length Information:

Segment	Length	Segment	Length	Segment	Length	Segment	Length
0010	0784						
0250	0674						
0500	0726						
0750	0480						

Primary Route  
Interchange Exit  
Number

Secondary Route  
Interchange Exit  
Number

PennDOT Type 10 Map View:



Last Date Modified:

Jul 20, 2020

County: 46

# RMS Interchange Information

Print Form

Interchange Number: 8028

Bureau of Maintenance & Operations  
Roadway Management Division



Interchange Name: HIGH ST INT

Intersecting SR's: PA 100 Pottstown Boyertown Bp & SR 4031 High St

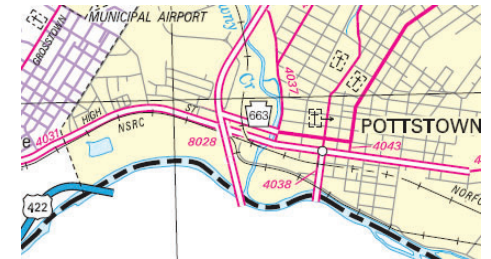
Ramp Segment Number and Ramp Segment Length Information:

Segment	Length	Segment	Length	Segment	Length	Segment	Length
0250	1055						
0750	0775						

Primary Route Interchange Exit Number

Secondary Route Interchange Exit Number

PennDOT Type 10 Map View:



Last Date Modified: Jul 20, 2020

County: 46

# RMS Interchange Information

Print Form

Bureau of Maintenance & Operations  
Roadway Management Division



Interchange Number: 8029

Interchange Name: FLOURTOWN INT

Intersecting SR's: PA 73 Church Rd & PA 309

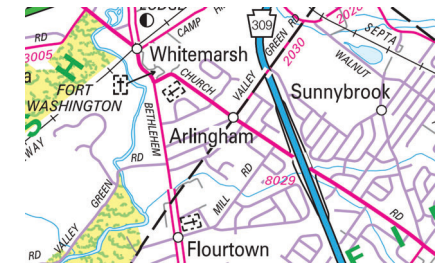
Ramp Segment Number and Ramp Segment Length Information:

Segment	Length	Segment	Length	Segment	Length	Segment	Length
0010	1050						
0250	0620						
0500	0645						
0750	0564						

Primary Route  
Interchange Exit  
Number

Secondary Route  
Interchange Exit  
Number

PennDOT Type 10 Map View:



Last Date Modified:

Jul 20, 2020



County: 46

# RMS Interchange Information

Print Form

Interchange Number: 8030

Bureau of Maintenance & Operations  
Roadway Management Division



Interchange Name: HALFWAY HOUSE INT

Intersecting SR's: PA 100 Pottstown Bp & TWP Farmington Av

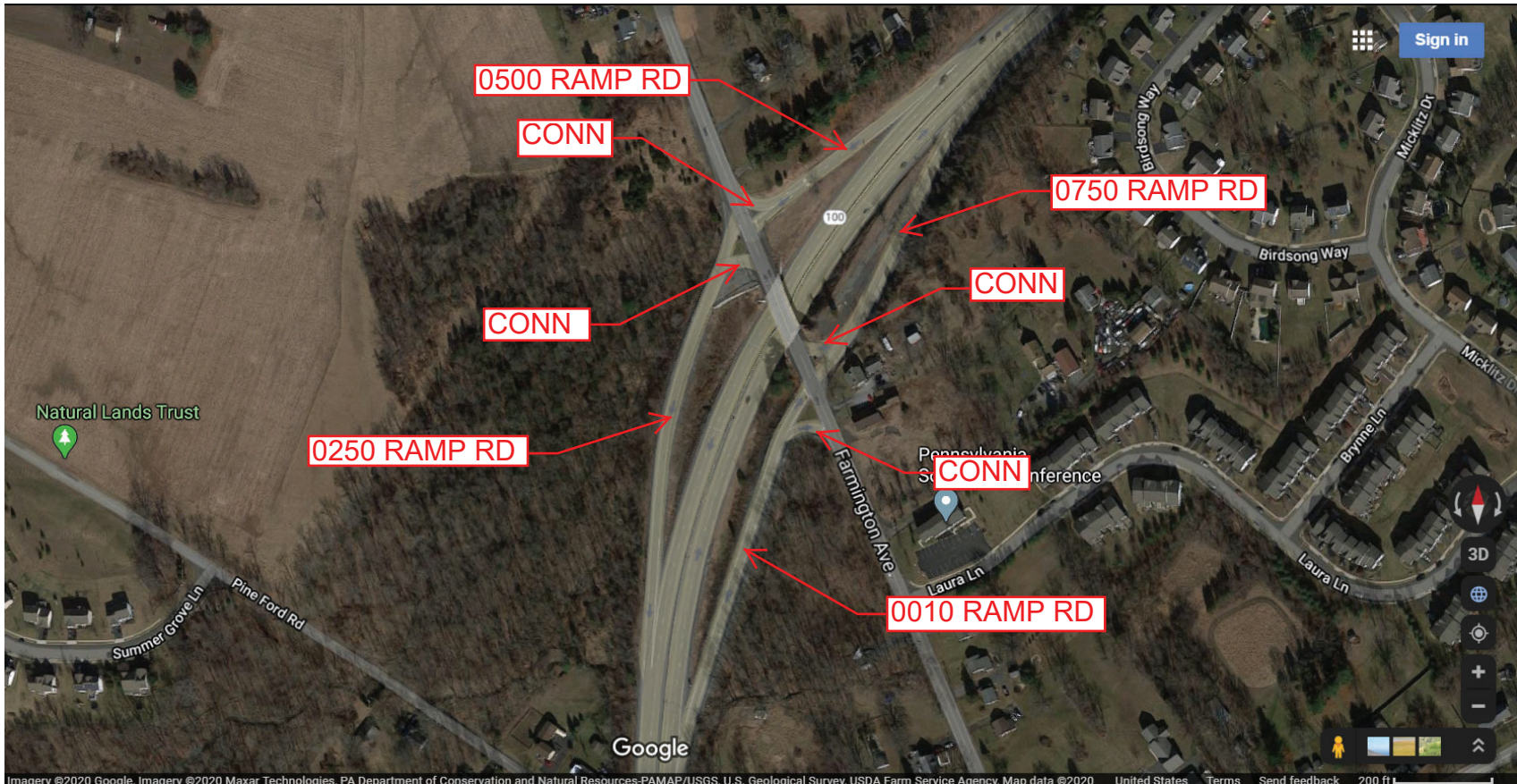
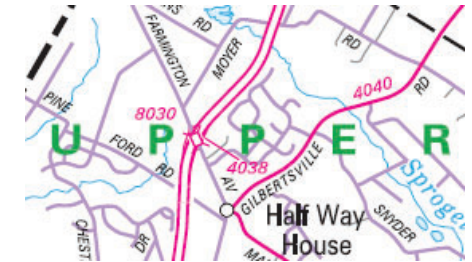
Ramp Segment Number and Ramp Segment Length Information:

Segment	Length	Segment	Length	Segment	Length	Segment	Length
0010	0697						
0250	0726						
0500	0340						
0750	0570						

Primary Route  
Interchange Exit  
Number

Secondary Route  
Interchange Exit  
Number

PennDOT Type 10 Map View:



Imagery ©2020 Google, Imagery ©2020 Maxar Technologies, PA Department of Conservation and Natural Resources-PAMAP/USGS, U.S. Geological Survey, USDA Farm Service Agency, Map data ©2020 United States

Last Date Modified:

Jul 20, 2020

County: 46

# RMS Interchange Information

Print Form

Bureau of Maintenance & Operations  
Asset Management Division



Interchange Number: 8031

Interchange Name: PA 309 & PA TURNPIKE

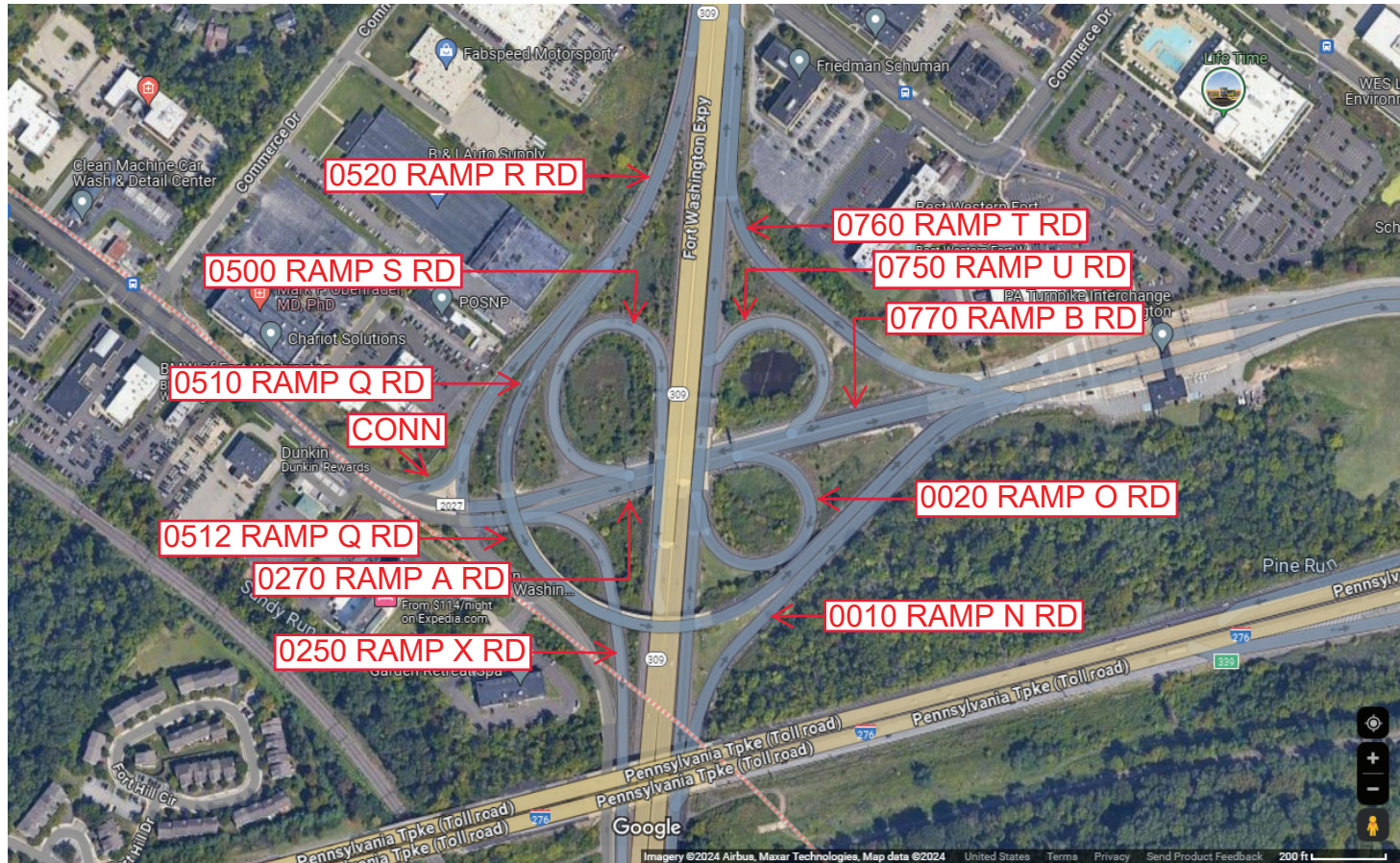
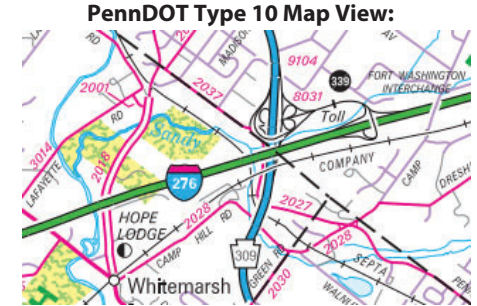
Intersecting SR's: I-276, PA 309 & SR 2027 Pennsylvania Av

Ramp Segment Number and Ramp Segment Length Information:

Segment	Length	Segment	Length	Segment	Length	Segment	Length
0010	0999	0510	0507	0770	1483		
0020	0561	0512	0884				
0250	0839	0520	1286				
0270	1355	0750	0489				
0500	0745	0760	0716				

Primary Route Interchange Exit Number

Secondary Route Interchange Exit Number



Last Date Modified: Jan 21, 2025

County: 46

# RMS Interchange Information

Print Form

Interchange Number: 8032

Bureau of Maintenance & Operations  
Roadway Management Division



Interchange Name: BOYERTOWN INT

Intersecting SR's: PA 73 & PA 100

Ramp Segment Number and Ramp Segment Length Information:

Segment	Length	Segment	Length	Segment	Length	Segment	Length
0010	0640						
0250	0608						
0500	0650						
0750	0622						

Primary Route  
Interchange Exit  
Number

Secondary Route  
Interchange Exit  
Number

PennDOT Type 10 Map View:



Last Date Modified: Jul 20, 2020

County: 46

# RMS Interchange Information

Print Form

Interchange Number: 8033

Bureau of Maintenance & Operations  
Roadway Management Division



Interchange Name: HIGHLAND AV INT

Intersecting SR's: PA 309 Fort Washington Ex & TWP Highland Av

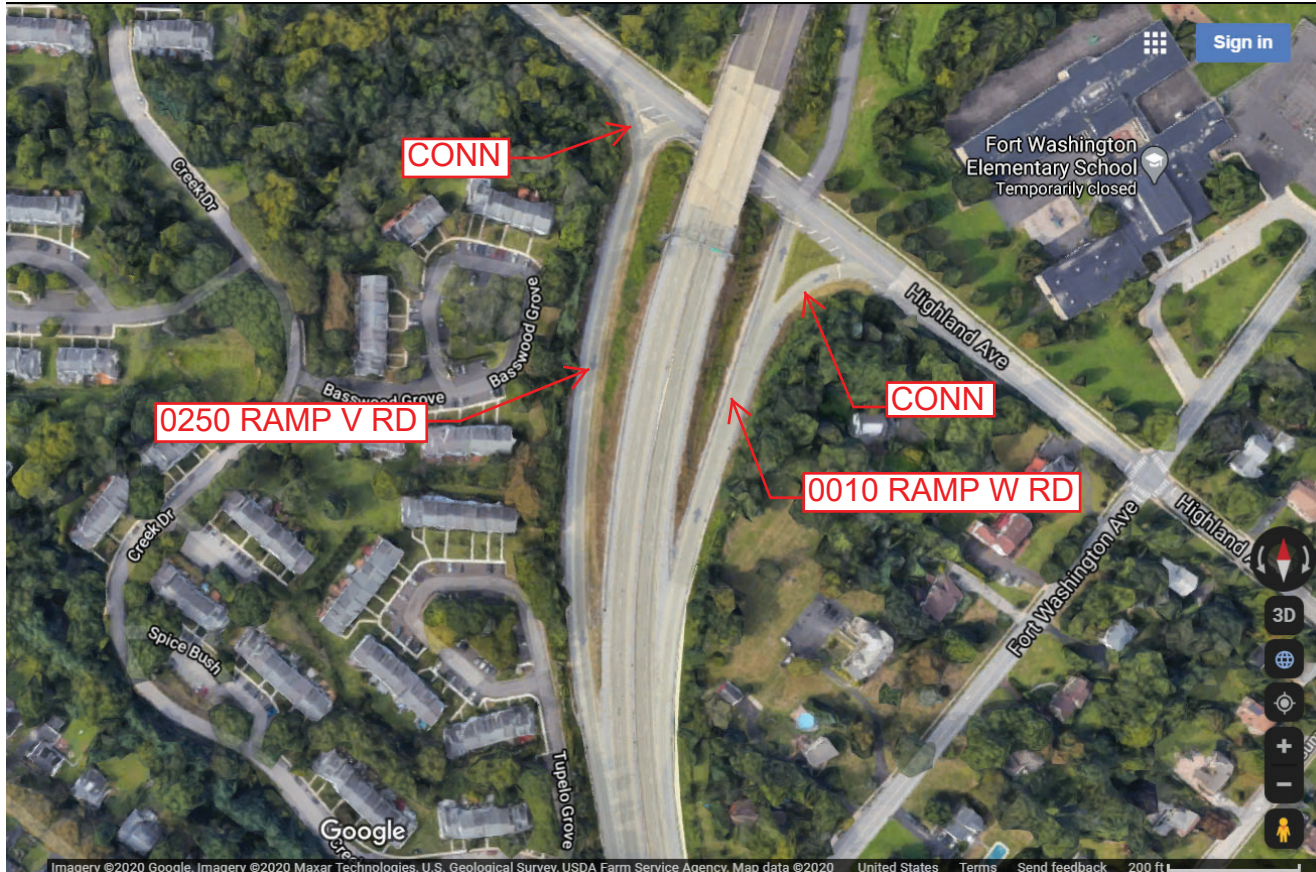
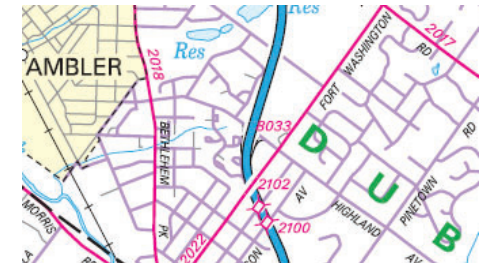
Ramp Segment Number and Ramp Segment Length Information:

Segment	Length	Segment	Length	Segment	Length	Segment	Length
0010	0605						
0250	0990						

Primary Route  
Interchange Exit  
Number

Secondary Route  
Interchange Exit  
Number

PennDOT Type 10 Map View:



Last Date Modified:

Jul 20, 2020

County: 46

# RMS Interchange Information

Print Form

Interchange Number: 8034

Bureau of Maintenance & Operations  
Asset Management Division



Interchange Name: KING OF PRUSSIA INT

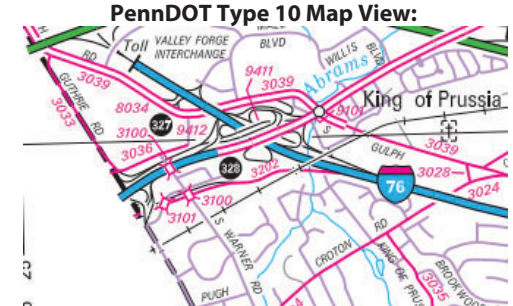
Intersecting SR's: I-76 & SR 3039 Gulph Rd

Ramp Segment Number and Ramp Segment Length Information:

Segment	Length	Segment	Length	Segment	Length	Segment	Length
0010	0347						
0020	0400						
0520	0400						
0260	0350						

Primary Route Interchange Exit Number: 1

Secondary Route Interchange Exit Number: 327



Last Date Modified: Nov 7, 2024

County: 46

# RMS Interchange Information

Print Form

Bureau of Maintenance & Operations  
Roadway Management Division



Interchange Number: 8035

Interchange Name: SUSQUEHANNA RD INT

Intersecting SR's: PA 309 Fort Washington Ex & SR 2017 Susquehanna Rd

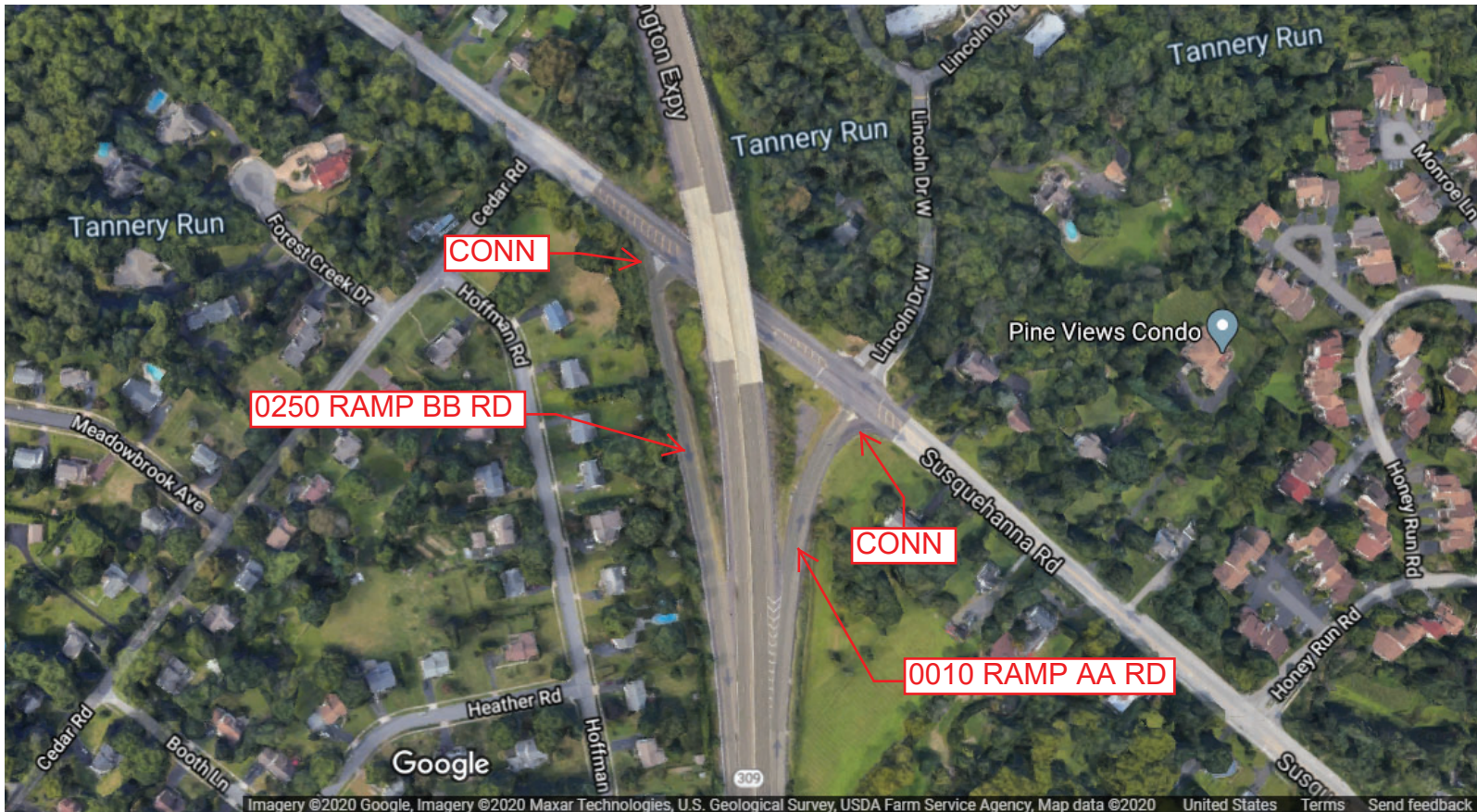
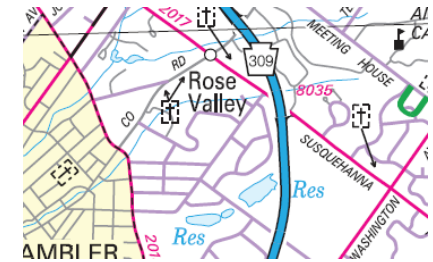
Ramp Segment Number and Ramp Segment Length Information:

Segment	Length	Segment	Length	Segment	Length	Segment	Length
0010	0372						
0250	0679						

Primary Route Interchange Exit Number

Secondary Route Interchange Exit Number

PennDOT Type 10 Map View:



Imagery ©2020 Google, Imagery ©2020 Maxar Technologies, U.S. Geological Survey, USDA Farm Service Agency, Map data ©2020 United States Terms Send feedback

Last Date Modified:

Jul 20, 2020

County: 46

# RMS Interchange Information

Print Form

Interchange Number: 8037

Bureau of Maintenance & Operations  
Roadway Management Division



Interchange Name: BUTLER PIKE INT

Intersecting SR's: PA 309 Fort Washington Ex & CNTY Butler Pk

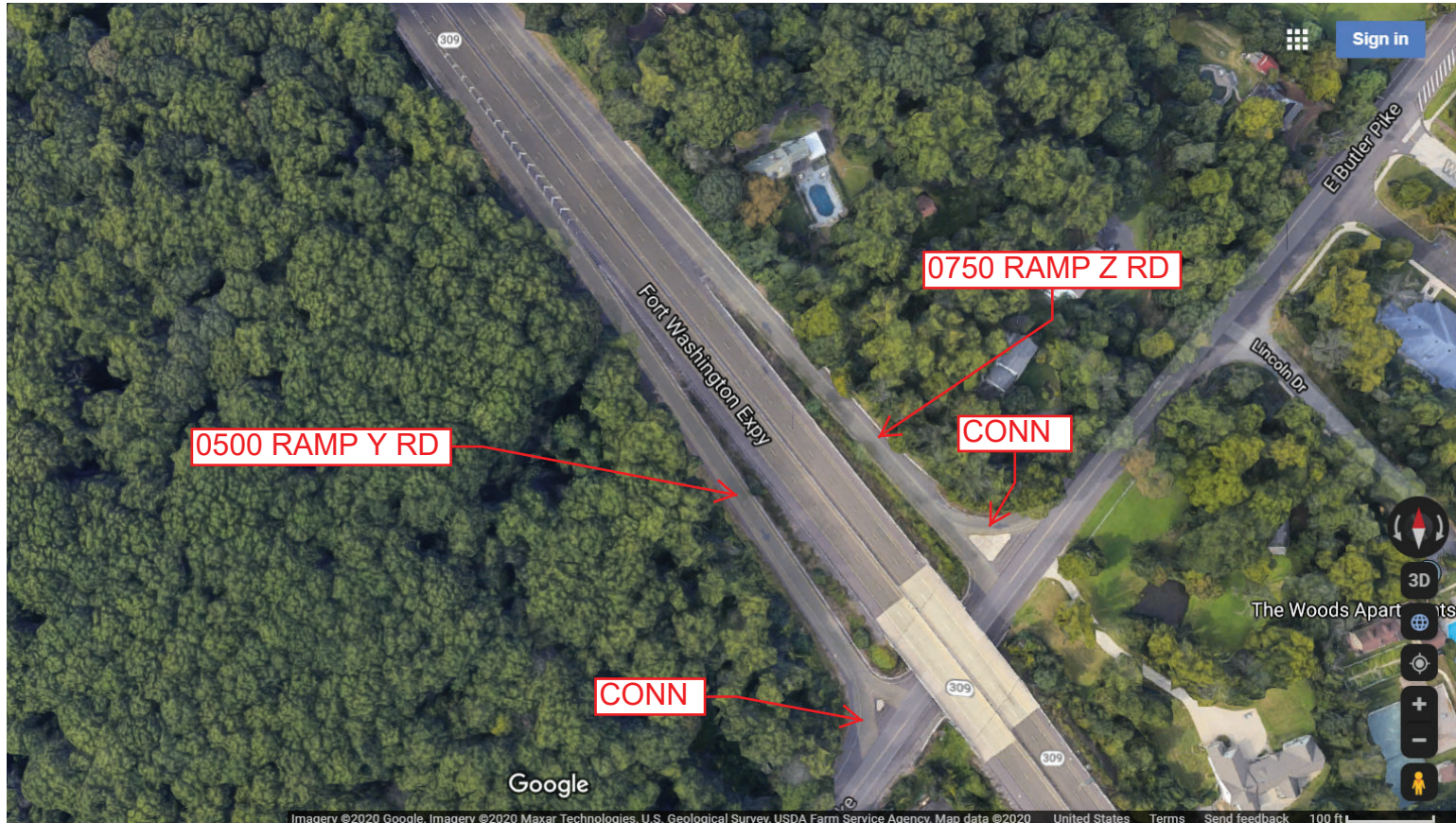
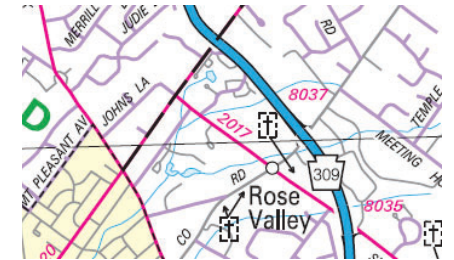
Ramp Segment Number and Ramp Segment Length Information:

Segment	Length	Segment	Length	Segment	Length	Segment	Length
0500	0639						
0750	0523						

Primary Route  
Interchange Exit  
Number

Secondary Route  
Interchange Exit  
Number

PennDOT Type 10 Map View:



Last Date Modified:

Jul 20, 2020

County: 46

# RMS Interchange Information

Print Form

Interchange Number: 8039

Bureau of Maintenance & Operations  
Roadway Management Division



Interchange Name: NORRISTOWN RD INT

Intersecting SR's: PA 309 & SR 2052 Norristown Rd

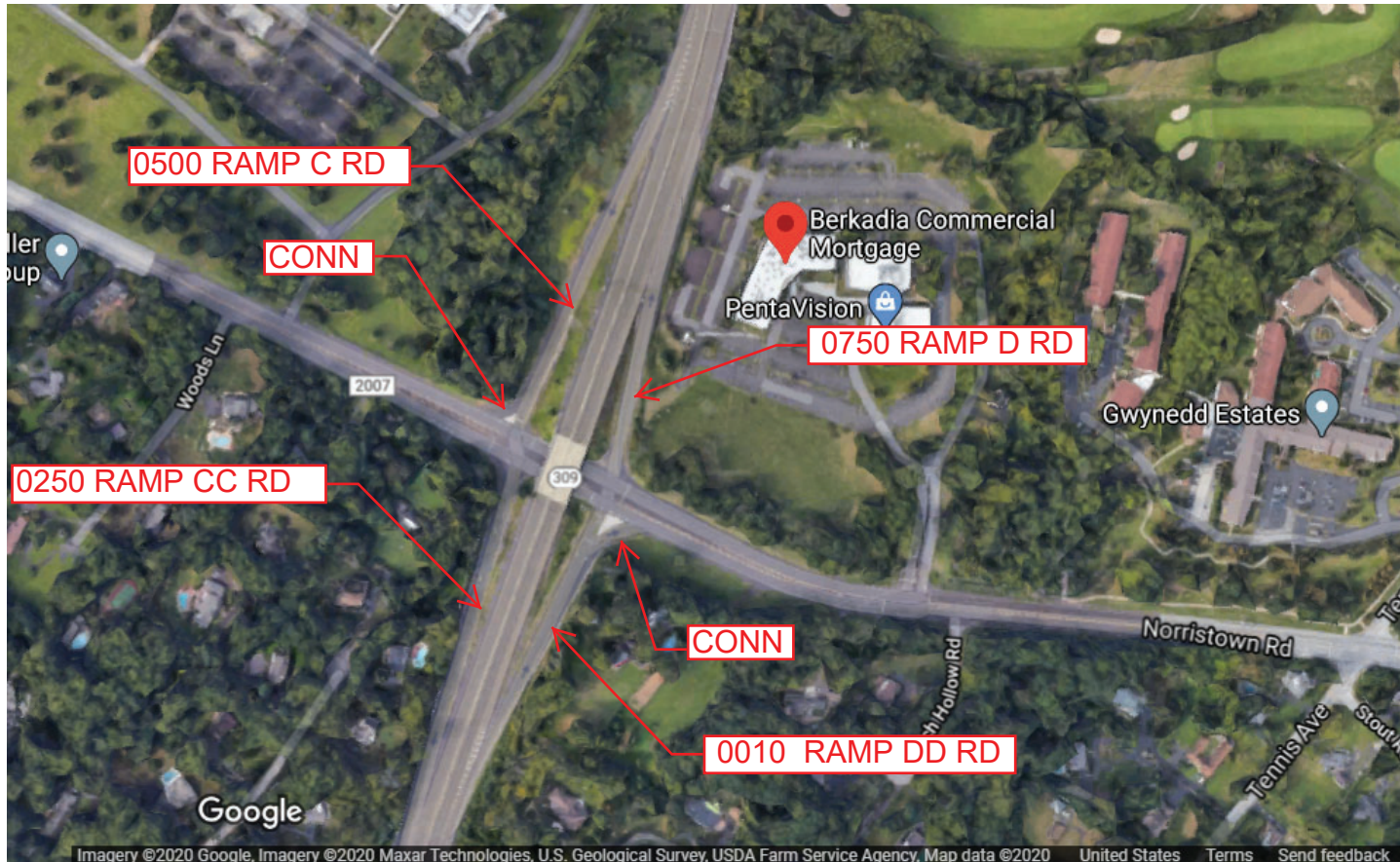
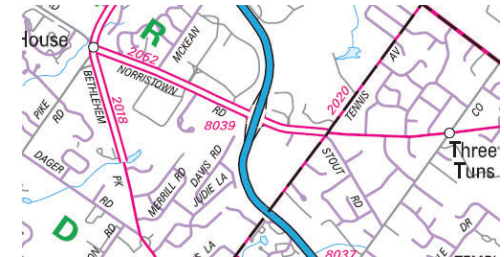
Ramp Segment Number and Ramp Segment Length Information:

Segment	Length	Segment	Length	Segment	Length	Segment	Length
0010	0650						
0250	0645						
0500	0880						
0750	0479						

Primary Route  
Interchange Exit  
Number

Secondary Route  
Interchange Exit  
Number

PennDOT Type 10 Map View:



Last Date Modified:

Jul 21, 2020



County: 46

# RMS Interchange Information

Print Form

Interchange Number: 8041

Bureau of Maintenance & Operations  
Asset Management Division



Interchange Name: PA 611 & PA TURNPIKE INT

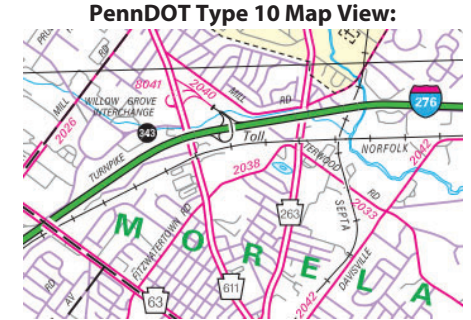
Intersecting SR's: I-276 & PA 611 Easton Rd

Ramp Segment Number and Ramp Segment Length Information:

Segment	Length	Segment	Length	Segment	Length	Segment	Length
0010	0640						
0250	1807						
0750	0473						
0760	1894						

Primary Route Interchange Exit Number: 343

Secondary Route Interchange Exit Number



Last Date Modified: Jan 24, 2025

County: 46

# RMS Interchange Information

Print Form

Interchange Number: 8049

Bureau of Maintenance & Operations  
Roadway Management Division



Interchange Name: KING OF PRUS IND PK

Intersecting SR's: US 422 & SR 3039 Gulph Rd

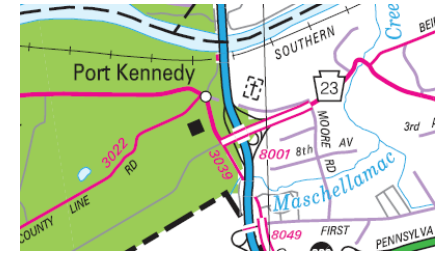
Ramp Segment Number and Ramp Segment Length Information:

Segment	Length	Segment	Length	Segment	Length	Segment	Length
0250	1400						
0750	1134						

Primary Route Interchange Exit Number

Secondary Route Interchange Exit Number

PennDOT Type 10 Map View:



Last Date Modified: Jul 21, 2020

County: 46

# RMS Interchange Information

Print Form

Bureau of Maintenance & Operations  
Roadway Management Division



Interchange Number: 9101

Interchange Name: US 202 & SR 3039 GULPH RD

Intersecting SR's: US 202 W Dekalb Pk & SR 3039 Gulph Rd

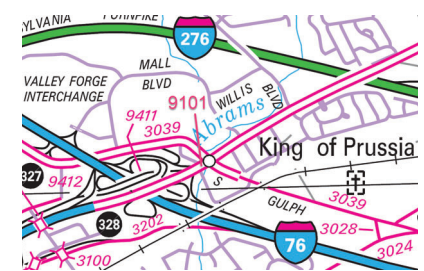
Ramp Segment Number and Ramp Segment Length Information:

Segment	Length	Segment	Length	Segment	Length	Segment	Length
0010	0719						

Primary Route  
Interchange Exit  
Number

Secondary Route  
Interchange Exit  
Number

PennDOT Type 10 Map View:



Last Date Modified: Jul 21, 2020

County: 46

# RMS Interchange Information

Print Form

Interchange Number: 9102

Bureau of Maintenance & Operations  
Roadway Management Division



Interchange Name: BRIDGEPORT BP JUGHANDLE

Intersecting SR's: US 202 & SR 3020 Bridgeport Bp

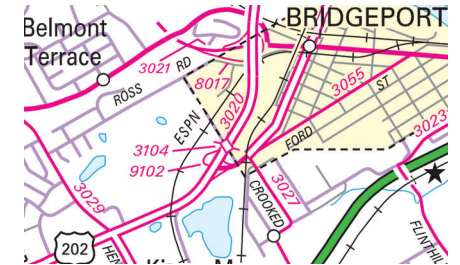
Ramp Segment Number and Ramp Segment Length Information:

Segment	Length	Segment	Length	Segment	Length	Segment	Length
0250	0457						

Primary Route  
Interchange Exit  
Number

Secondary Route  
Interchange Exit  
Number

PennDOT Type 10 Map View:



Last Date Modified:

Jul 21, 2020

County: 46

# RMS Interchange Information

Print Form

Bureau of Maintenance & Operations  
Roadway Management Division



Interchange Number: 9104

Interchange Name: PA 309 COLLECTOR RD

Intersecting SR's: PA 309 Fort Washington Ex

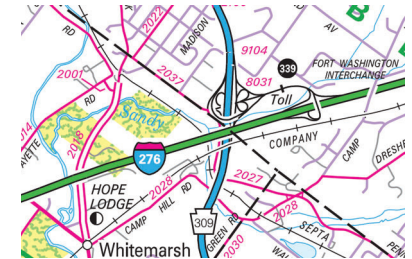
Ramp Segment Number and Ramp Segment Length Information:

Segment	Length	Segment	Length	Segment	Length	Segment	Length
0010	1646						
0020	1396						

Primary Route  
Interchange Exit  
Number

Secondary Route  
Interchange Exit  
Number

PennDOT Type 10 Map View:



Last Date Modified:

Jul 21, 2020

County: 46

# RMS Interchange Information

Print Form

Bureau of Maintenance & Operations  
Roadway Management Division



Interchange Number: 9105

Interchange Name: LIMEKILN PK

Intersecting SR's: PA 152 Limekiln Pk

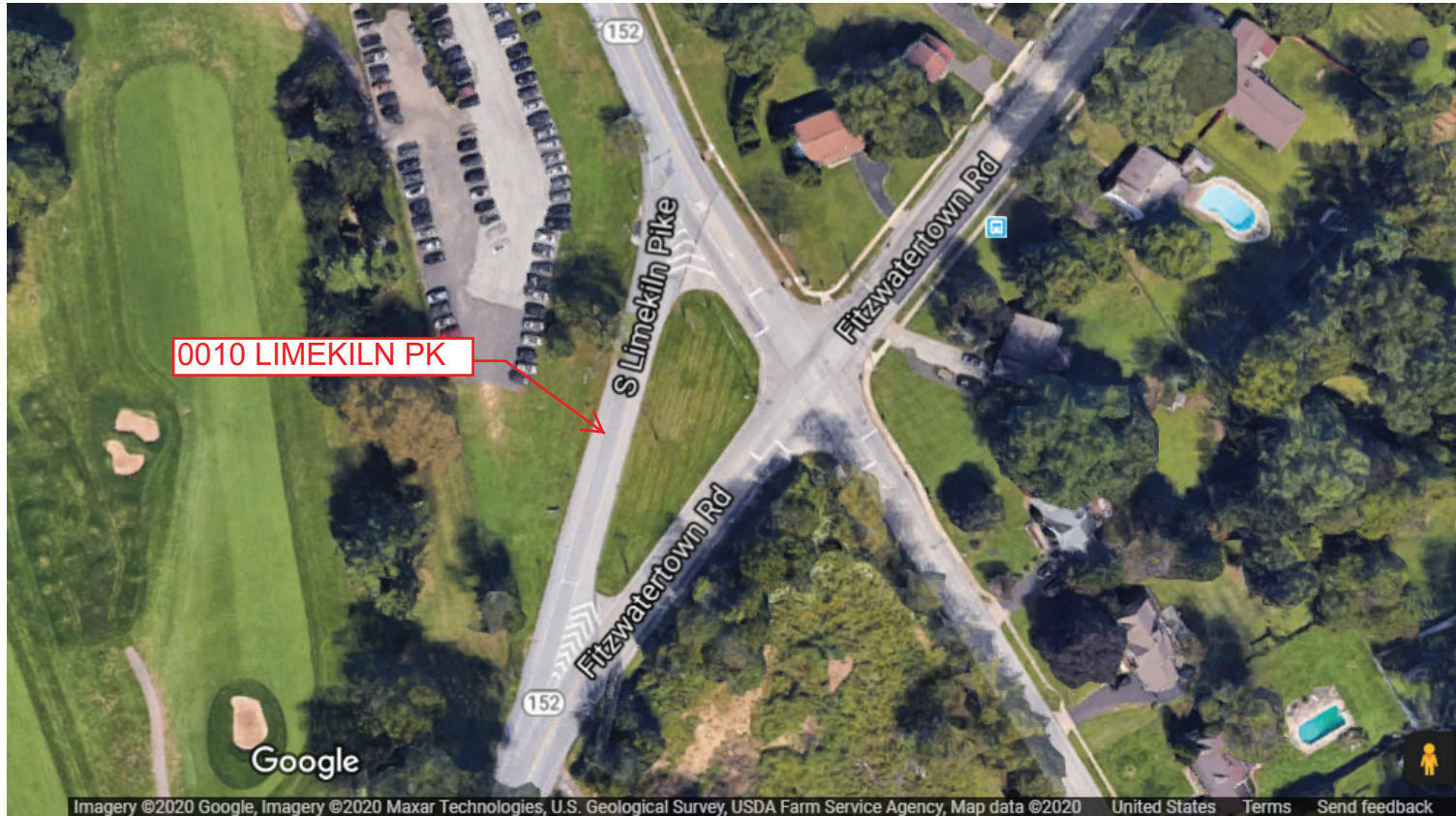
Ramp Segment Number and Ramp Segment Length Information:

Segment	Length	Segment	Length	Segment	Length	Segment	Length
0010	0426						

Primary Route Interchange Exit Number

Secondary Route Interchange Exit Number

PennDOT Type 10 Map View:



Last Date Modified: Jul 21, 2020

County: 46

# RMS Interchange Information

Print Form

Interchange Number: 9402

Bureau of Maintenance & Operations  
Roadway Management Division



Interchange Name: BETHLEHEM PK & WELSH RD

Intersecting SR's: PA 309 Bethlehem Pk & PA 63 Welsh Rd

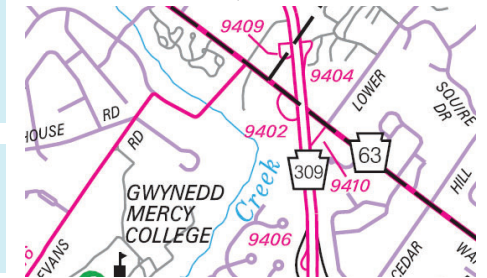
Ramp Segment Number and Ramp Segment Length Information:

Segment	Length	Segment	Length	Segment	Length	Segment	Length
0010	0815						

Primary Route  
Interchange Exit  
Number

Secondary Route  
Interchange Exit  
Number

PennDOT Type 10 Map View:



Last Date Modified:

May 27, 2020

County: 46

# RMS Interchange Information

Print Form

Interchange Number: 9404

Bureau of Maintenance & Operations  
Roadway Management Division



Interchange Name:

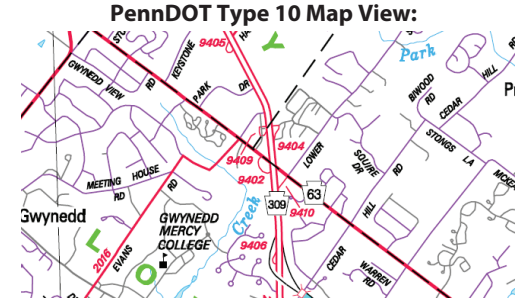
Intersecting SR's: PA 309 & PRDR English Village Dr

Ramp Segment Number and Ramp Segment Length Information:

Segment	Length	Segment	Length	Segment	Length	Segment	Length
0010	0267						

Primary Route  
Interchange Exit  
Number

Secondary Route  
Interchange Exit  
Number



Last Date Modified:

May 26, 2020



County: 46

# RMS Interchange Information

Print Form

Interchange Number: 9405

Bureau of Maintenance & Operations  
Asset Management Division



Interchange Name: BETTLEHEM PIKE & HARTMAN ROAD

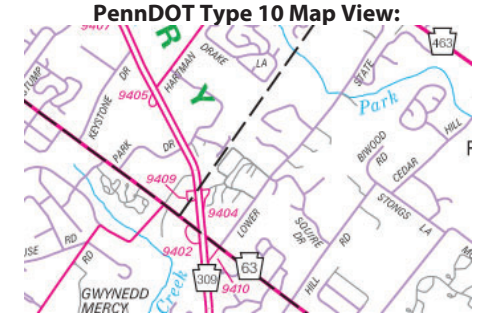
Intersecting SR's: PA 309 Bethlehem Pk & SR 2014 Hartman Rd

Ramp Segment Number and Ramp Segment Length Information:

Segment	Length	Segment	Length	Segment	Length	Segment	Length
0010	0503						

Primary Route  
Interchange Exit  
Number

Secondary Route  
Interchange Exit  
Number



Last Date Modified: Jan 9, 2025

County: 46

# RMS Interchange Information

Print Form

Interchange Number: 9406

Bureau of Maintenance & Operations  
Asset Management Division



Interchange Name: JUGHANDLE RD

Intersecting SR's: SR 2018 Bethlehem Pk

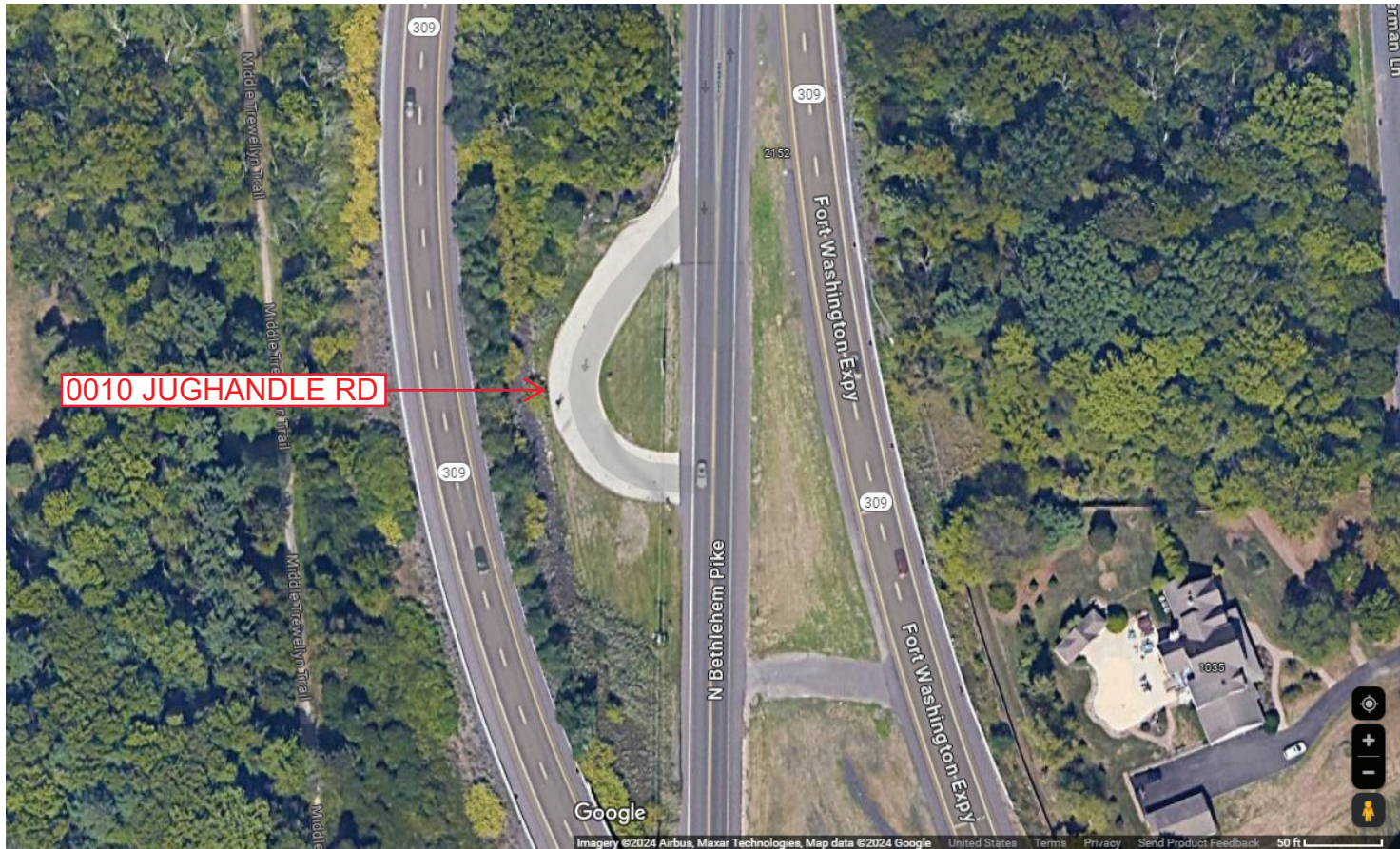
Ramp Segment Number and Ramp Segment Length Information:

Segment	Length	Segment	Length	Segment	Length	Segment	Length
0010	0208						

Primary Route  
Interchange Exit  
Number

Secondary Route  
Interchange Exit  
Number

PennDOT Type 10 Map View:



Last Date Modified:

Jan 21, 2025

County: 46

# RMS Interchange Information

Print Form

Interchange Number: 9407

Bureau of Maintenance & Operations  
Roadway Management Division



Interchange Name: PA 309 AND STUMP RD

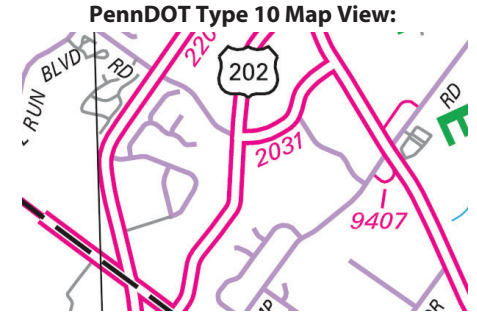
Intersecting SR's: PA 309 Bethlehem Pk & T375 Stump Rd

Ramp Segment Number and Ramp Segment Length Information:

Segment	Length	Segment	Length	Segment	Length	Segment	Length
0010	0373						

Primary Route Interchange Exit Number

Secondary Route Interchange Exit Number



Last Date Modified: May 26, 2020

County: 46

# RMS Interchange Information

Print Form

Interchange Number: 9408

Bureau of Maintenance & Operations  
Asset Management Division



Interchange Name: STUMP ROAD INT

Intersecting SR's: PA 309 & T375 Stump Rd

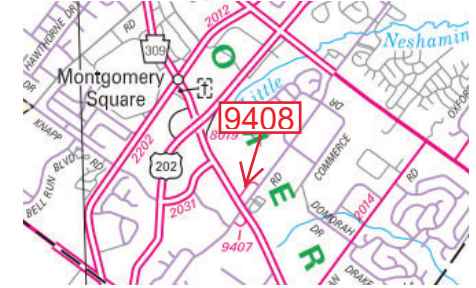
Ramp Segment Number and Ramp Segment Length Information:

Segment	Length	Segment	Length	Segment	Length	Segment	Length
0010	0819						

Primary Route  
Interchange Exit  
Number

Secondary Route  
Interchange Exit  
Number

PennDOT Type 10 Map View:



Last Date Modified:

Jan 21, 2025

County: 46

# RMS Interchange Information

Print Form

Interchange Number: 9409

Bureau of Maintenance & Operations  
Roadway Management Division



Interchange Name: GWYNEDD CROSSING INT

Intersecting SR's: PA 309 Bethlehem Pk & PRDR Gwynedd Crossing Dr

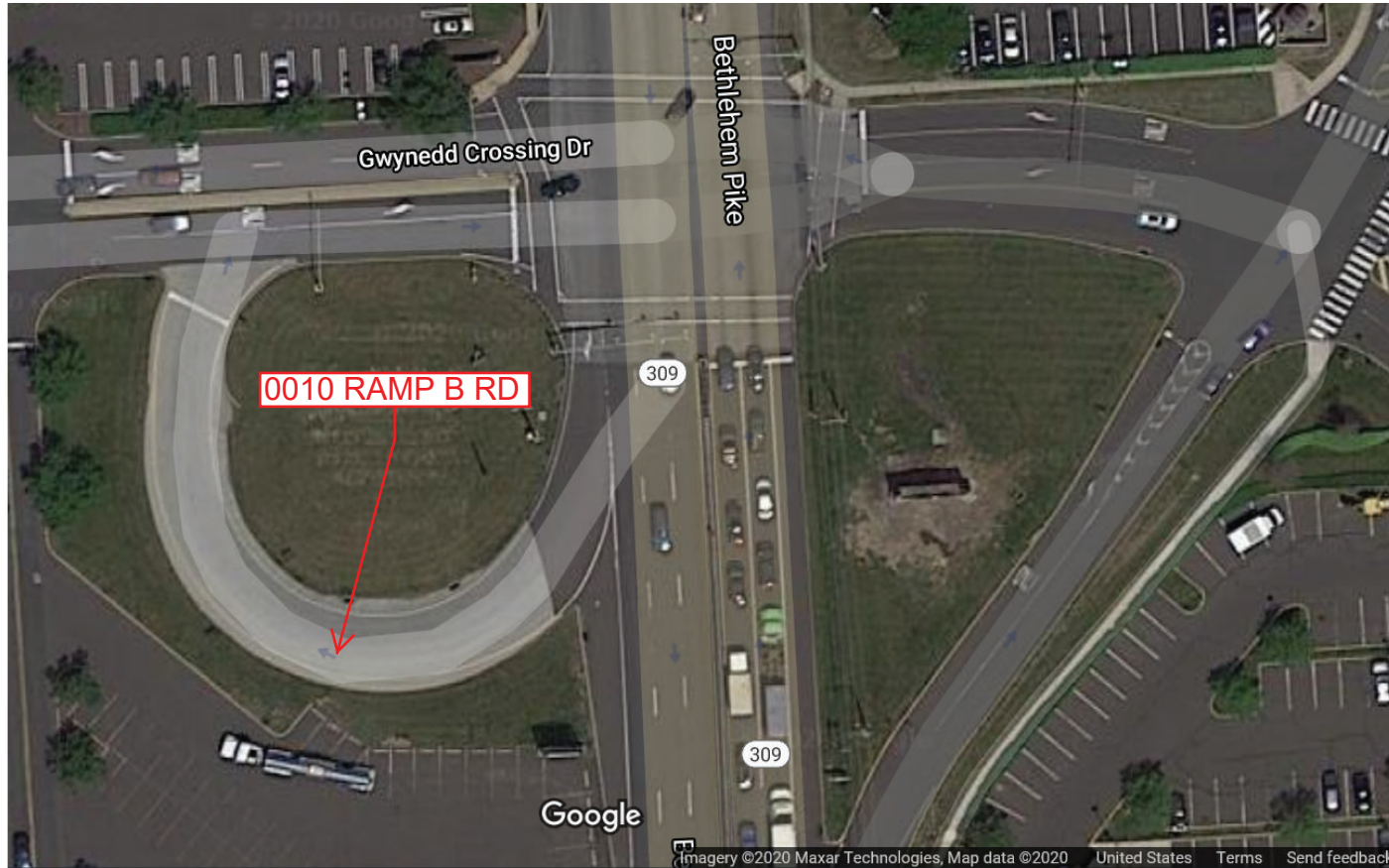
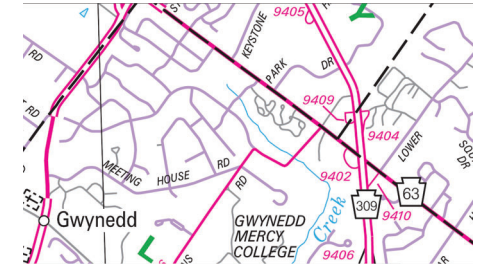
Ramp Segment Number and Ramp Segment Length Information:

Segment	Length	Segment	Length	Segment	Length	Segment	Length
0010	0288						

Primary Route  
Interchange Exit  
Number

Secondary Route  
Interchange Exit  
Number

PennDOT Type 10 Map View:



Last Date Modified: May 26, 2020

County: **46**

# RMS Interchange Information

Print Form

Interchange Number: **9410**

Bureau of Maintenance & Operations  
Roadway Management Division



Interchange Name: **LOWER STATE RD**

Intersecting SR's: **PA 63 Welsh Rd & PA 309 Bethlehem Pk**

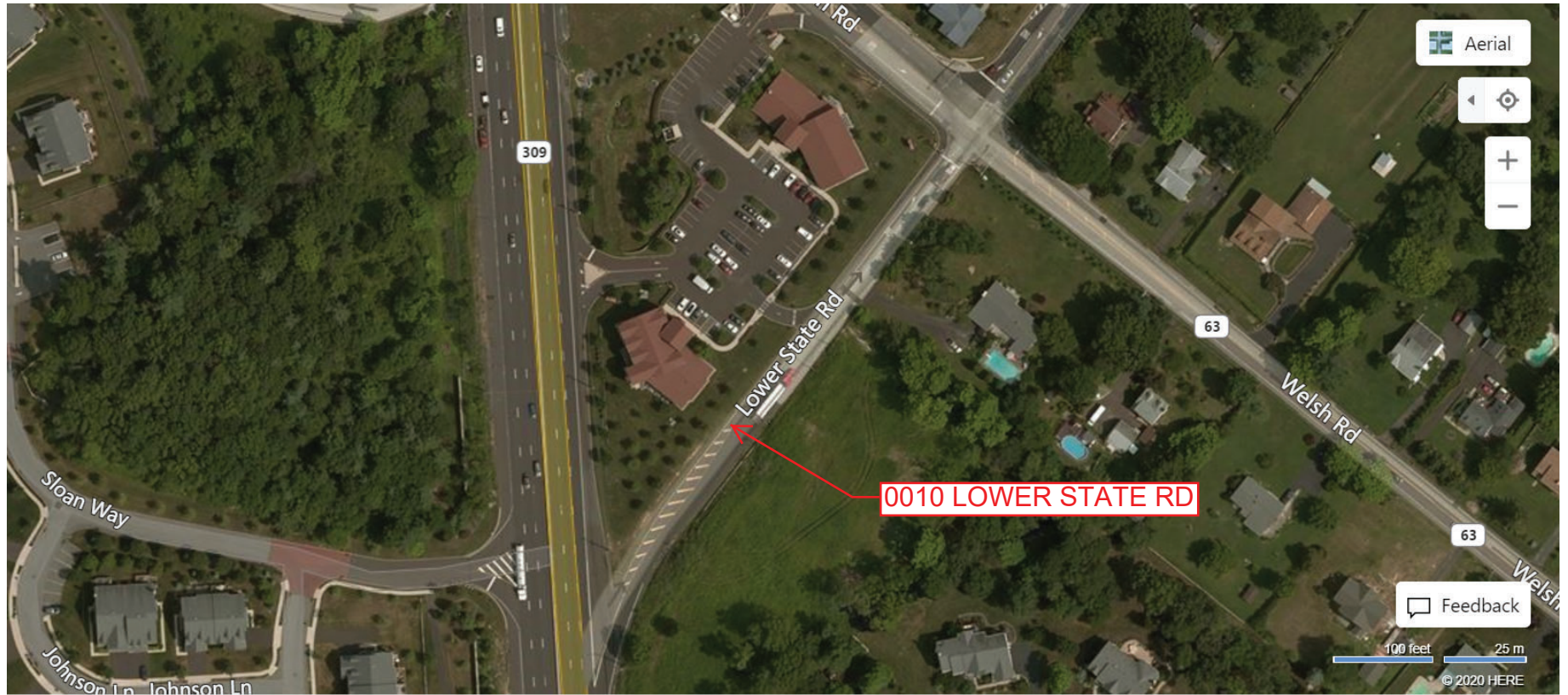
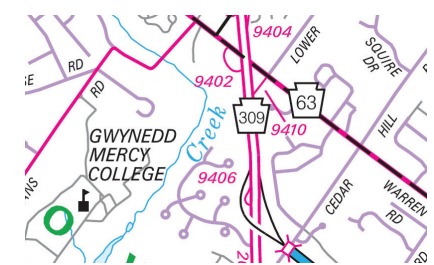
Ramp Segment Number and Ramp Segment Length Information:

Segment	Length	Segment	Length	Segment	Length	Segment	Length
<b>0010</b>	<b>0580</b>						

Primary Route Interchange Exit Number

Secondary Route Interchange Exit Number

PennDOT Type 10 Map View:



County: 46

# RMS Interchange Information

Print Form

Interchange Number: 9411

Bureau of Maintenance & Operations  
Roadway Management Division



Interchange Name: US202/I76/US422 CLTR RAMP

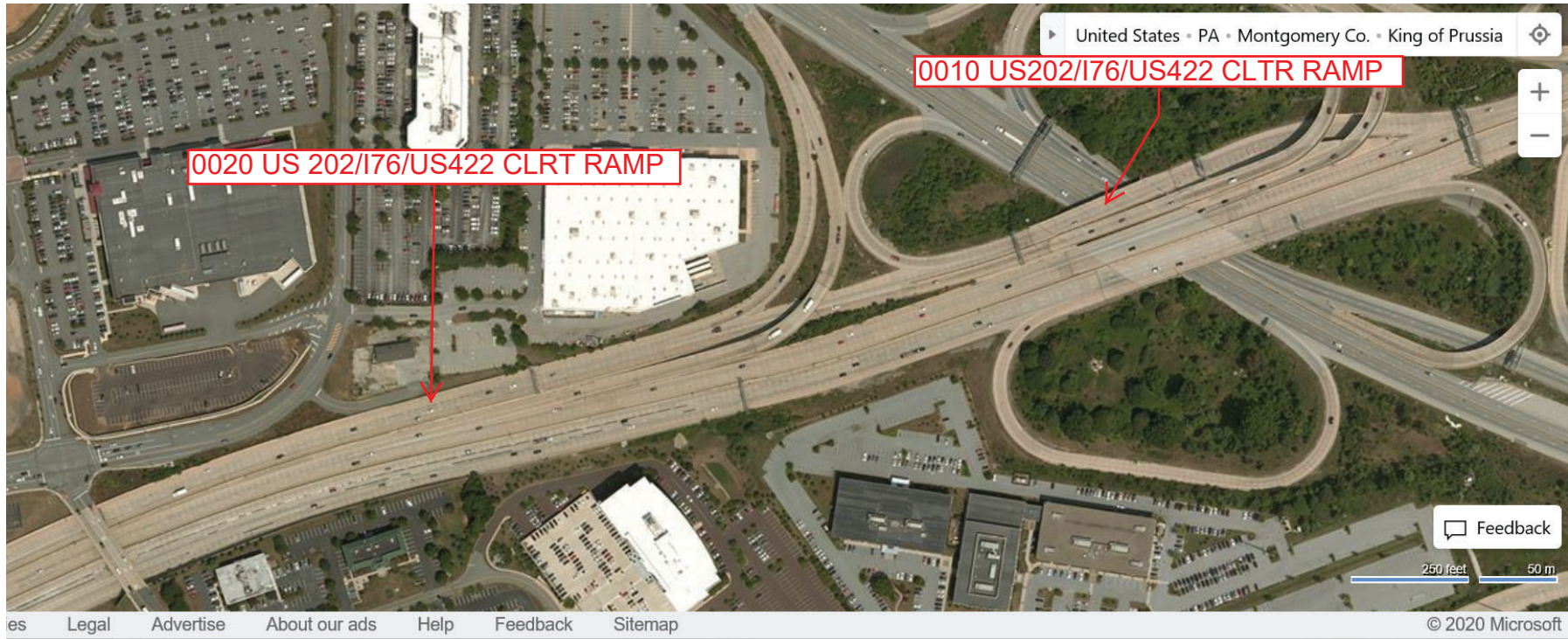
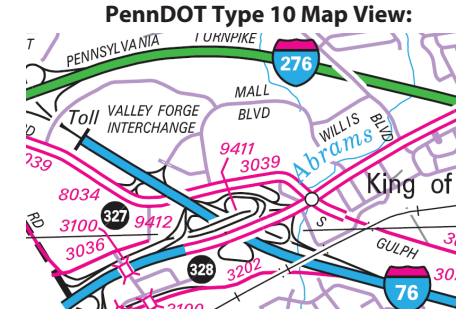
Intersecting SR's: US202 Dekalb Pk & SR 8002 Ramp Rd

Ramp Segment Number and Ramp Segment Length Information:

Segment	Length	Segment	Length	Segment	Length	Segment	Length
0010	1492						
0020	2302						

Primary Route Interchange Exit Number

Secondary Route Interchange Exit Number



Last Date Modified:

May 22, 2020

County: 46

# RMS Interchange Information

Print Form

Bureau of Maintenance & Operations  
Roadway Management Division



Interchange Number: 9412

Interchange Name: I-76 and TURNPIKE RAMP RD

Intersecting SR's: I-76 Schuylkill Ex, SR 8002 & Turnpike Ramp Rd

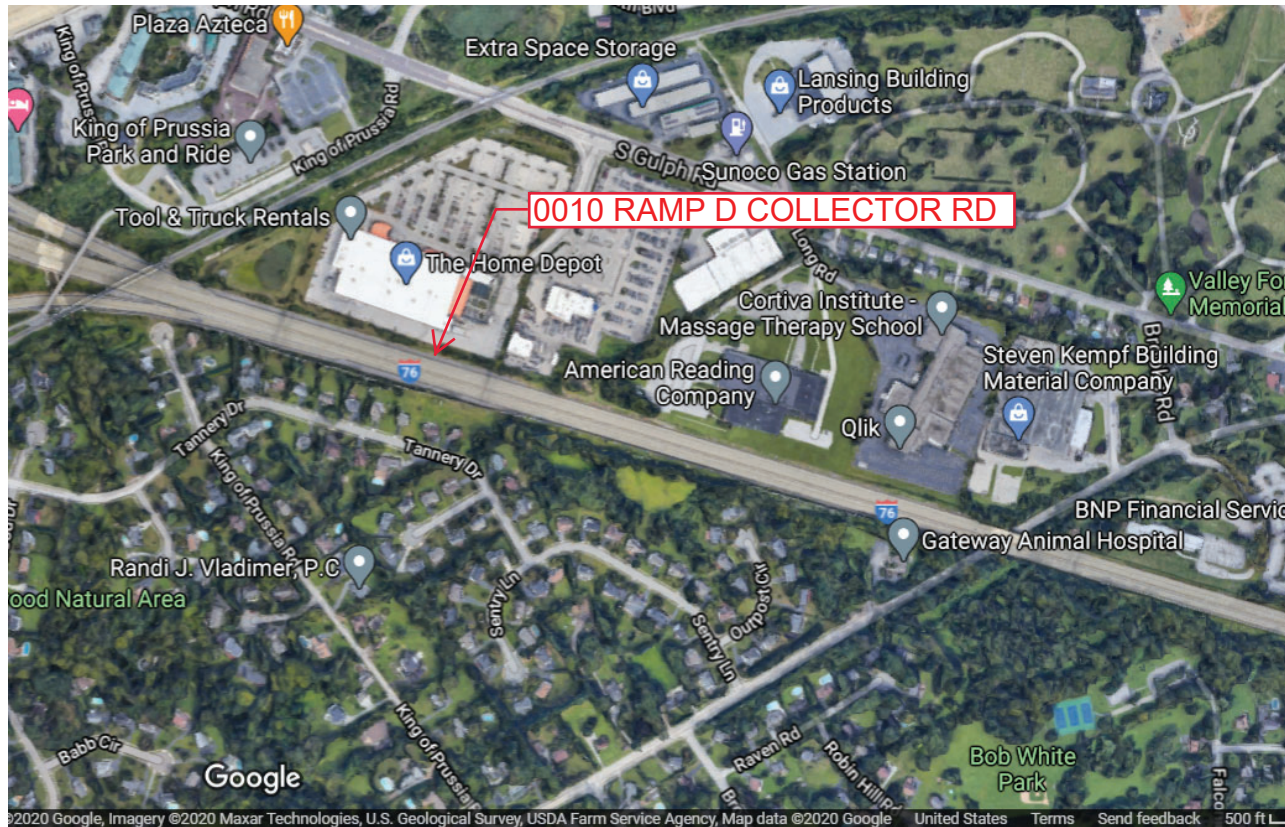
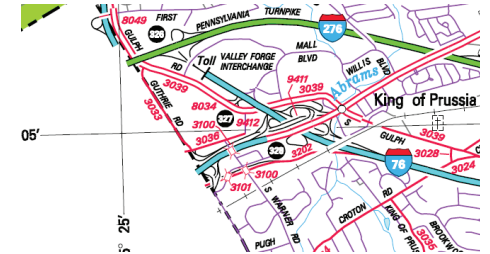
Ramp Segment Number and Ramp Segment Length Information:

Segment	Length	Segment	Length	Segment	Length	Segment	Length
0010	2959						

Primary Route Interchange Exit Number: 326

Secondary Route Interchange Exit Number: 328A

PennDOT Type 10 Map View:



Last Date Modified: Sep 18, 2020



County: 46

# RMS Interchange Information

Print Form

Interchange Number: 9413

Bureau of Maintenance & Operations  
Roadway Management Division



Interchange Name: PA 232 JUG HANDLE

Intersecting SR's: PA 232 Huntingdon Pk

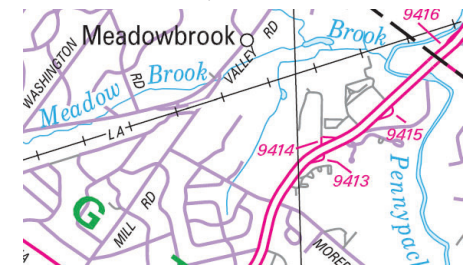
Ramp Segment Number and Ramp Segment Length Information:

Segment	Length	Segment	Length	Segment	Length	Segment	Length
0010	0381						

Primary Route  
Interchange Exit  
Number

Secondary Route  
Interchange Exit  
Number

PennDOT Type 10 Map View:



Imagery ©2020 Maxar Technologies, U.S. Geological Survey, USDA Farm Service Agency, Map data ©2020 United States Terms

Last Date Modified:

May 22, 2020

County: 46

# RMS Interchange Information

Print Form

Interchange Number: 9414

Bureau of Maintenance & Operations  
Roadway Management Division



Interchange Name: PA 232 JUG HANDLE

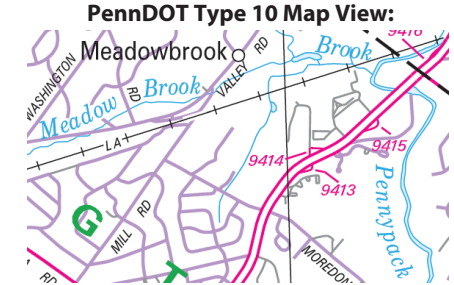
Intersecting SR's: PA 232 Huntingdon Pk & Holy Redeemer Hosp

Ramp Segment Number and Ramp Segment Length Information:

Segment	Length	Segment	Length	Segment	Length	Segment	Length
0010	0255						

Primary Route  
Interchange Exit  
Number

Secondary Route  
Interchange Exit  
Number



Imagery ©2020 Maxar Technologies, U.S. Geological Survey, USDA Farm Service Agency, Map data ©2020 United States Terms

Last Date Modified:

May 22, 2020

County: 46

# RMS Interchange Information

Print Form

Interchange Number: 9415

Bureau of Maintenance & Operations  
Roadway Management Division



Interchange Name: PA 232 JUG HANDLE

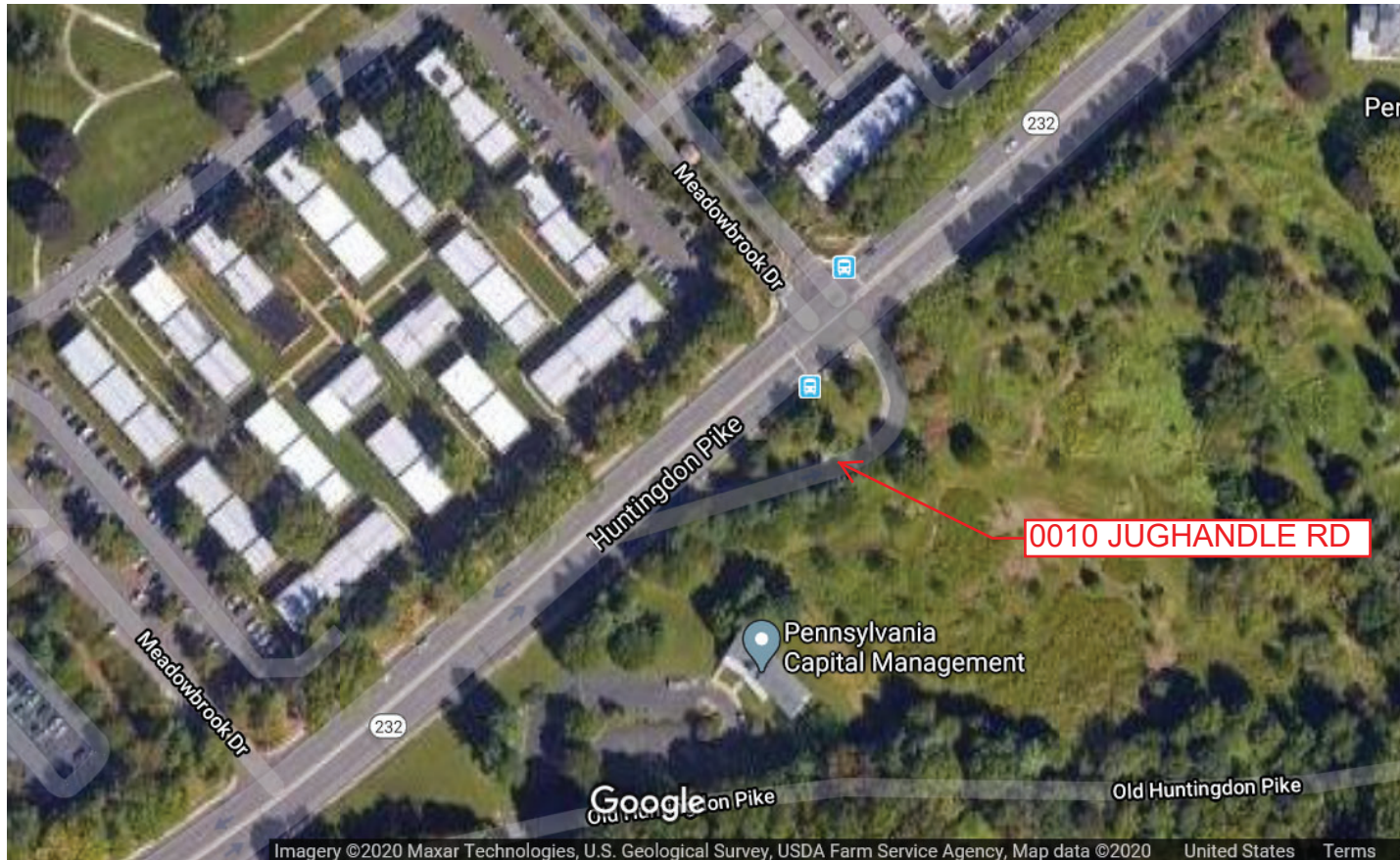
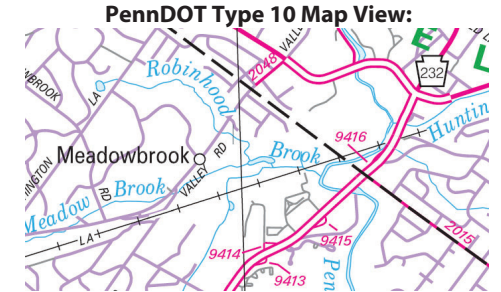
Intersecting SR's: PA 232 Huntingdon Pk

Ramp Segment Number and Ramp Segment Length Information:

Segment	Length	Segment	Length	Segment	Length	Segment	Length
0010	0327						

Primary Route Interchange Exit Number

Secondary Route Interchange Exit Number



Last Date Modified: May 22, 2020

County: 46

# RMS Interchange Information

Print Form

Interchange Number: 9416

Bureau of Maintenance & Operations  
Asset Management Division



Interchange Name: PA 232 JUGHANDLE RD

Intersecting SR's: PA 232, SR 2015 Moreland Rd & TWP Welsh Rd

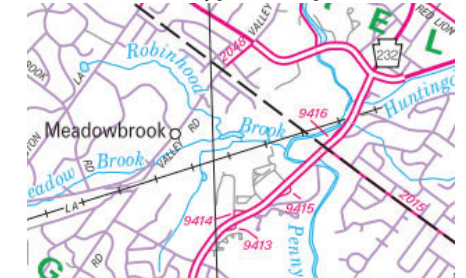
Ramp Segment Number and Ramp Segment Length Information:

Segment	Length	Segment	Length	Segment	Length	Segment	Length
0010	0333						
0020	0466						

Primary Route  
Interchange Exit  
Number

Secondary Route  
Interchange Exit  
Number

PennDOT Type 10 Map View:



Last Date Modified:

Nov 7, 2024