

County: 67

# RMS Interchange Information

Bureau of Maintenance & Operations  
Asset Management Division

Print Form



Interchange Number: 8001

Interchange Name: BROAD ST INT

Intersecting SR's: I-95 Delaware Ex & PA 611 Broad St

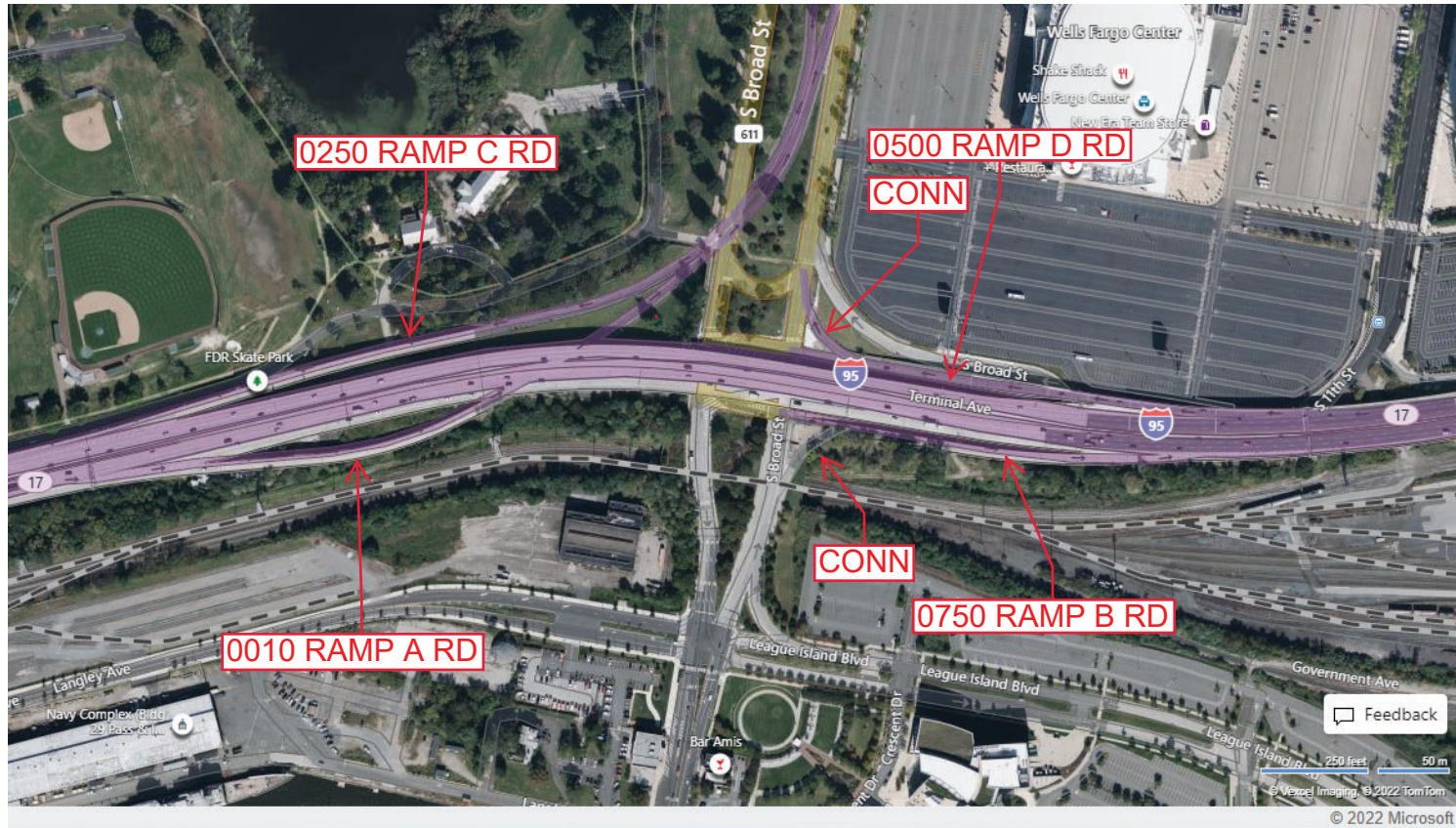
Ramp Segment Number and Ramp Segment Length Information:

Segment	Length	Segment	Length	Segment	Length	Segment	Length
0010	2214						
0250	2316						
0500	0910						
0750	0910						

Primary Route Interchange Exit Number: 17

Secondary Route Interchange Exit Number

PennDOT Type 10 Map View:



Last Date Modified: Mar 10, 2022

County: 67

# RMS Interchange Information

Print Form

Interchange Number: 8002

Bureau of Maintenance & Operations  
Roadway Management Division



Interchange Name: CITY LINE AV EXIT#33

Intersecting SR's: I-76 Schuylkill Ex & SR 4006 City Line Lower Br

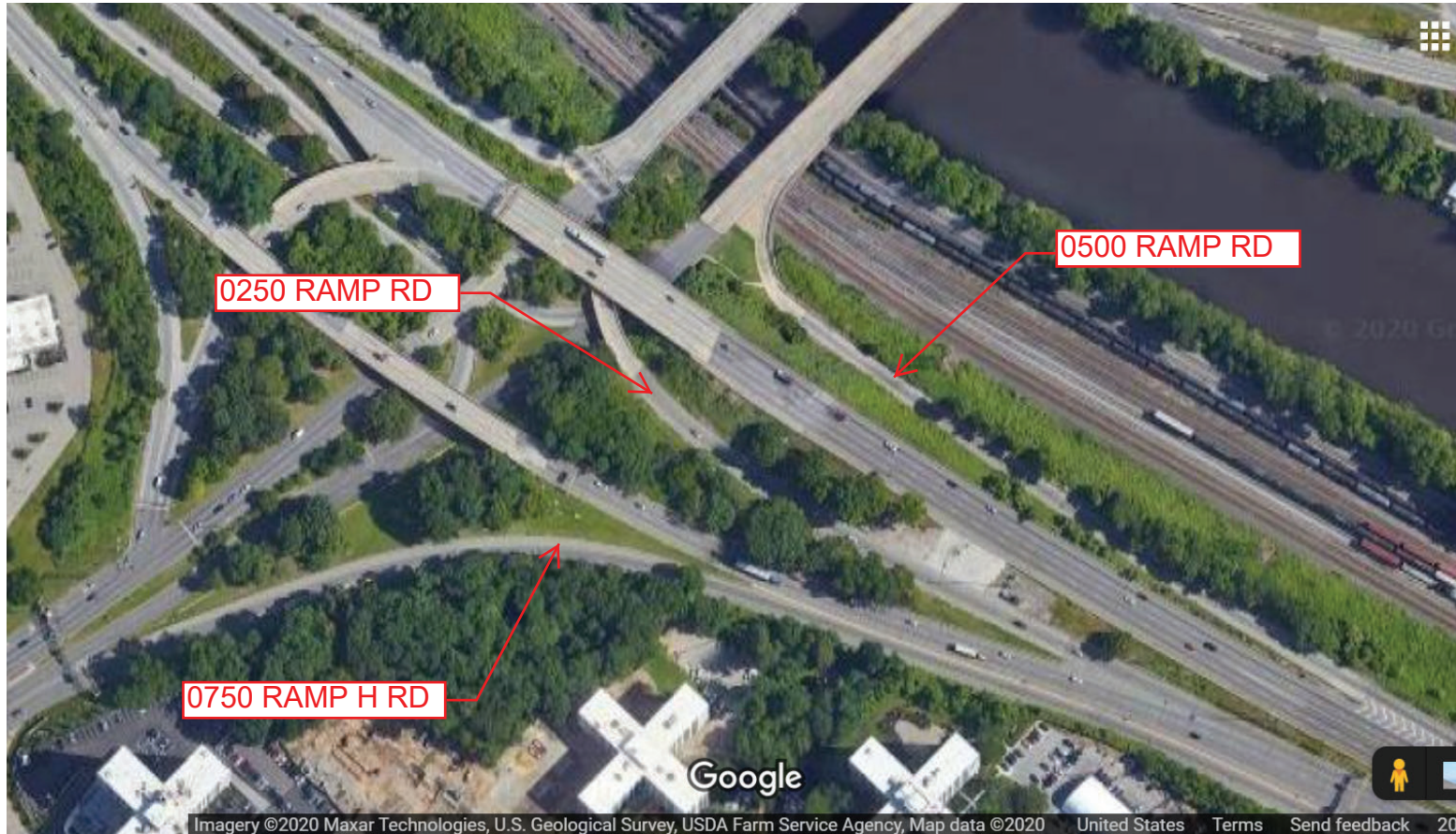
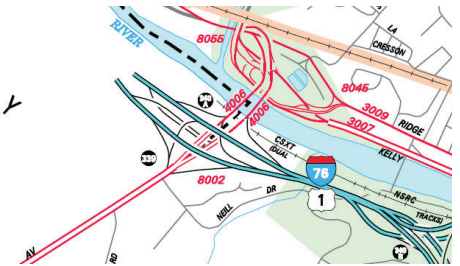
Ramp Segment Number and Ramp Segment Length Information:

Segment	Length	Segment	Length	Segment	Length	Segment	Length
0250	0780						
0500	1195						
0750	2840						

Primary Route Interchange Exit Number: 340

Secondary Route Interchange Exit Number

PennDOT Type 10 Map View:



Last Date Modified: Jul 6, 2020

County: 67

# RMS Interchange Information

Print Form

Interchange Number: 8003

Bureau of Maintenance & Operations  
Asset Management Division



Interchange Name: WALT WHITMAN INT

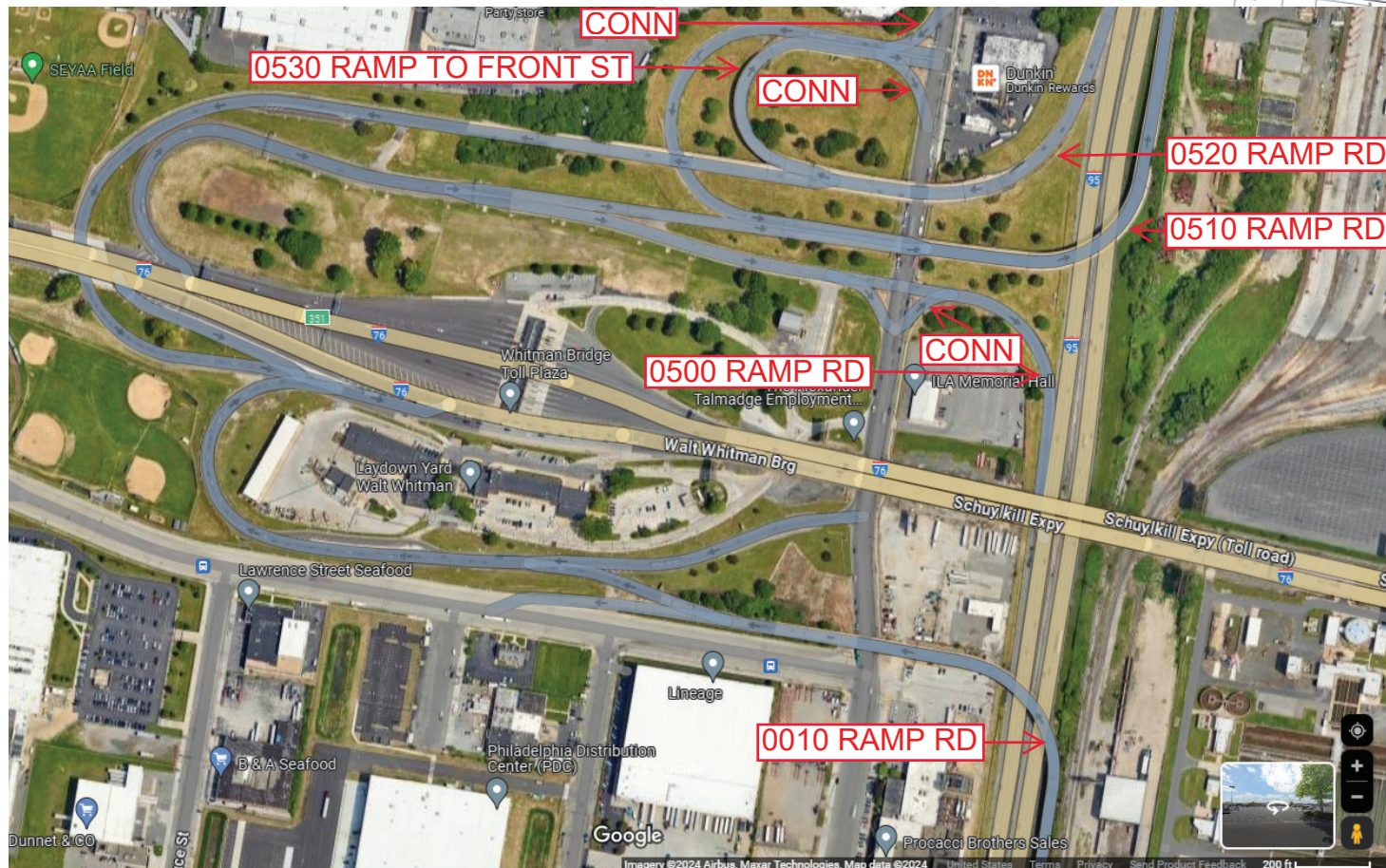
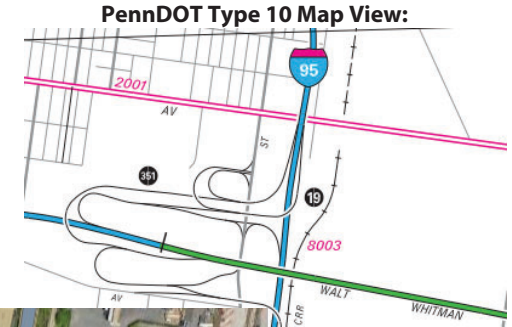
Intersecting SR's: I-76 Walt Whitman Br to NJ & I-95

Ramp Segment Number and Ramp Segment Length Information:

Segment	Length	Segment	Length	Segment	Length	Segment	Length
0010	2560						
0500	0490						
0510	3033						
0520	1859						
0530	0848						

Primary Route Interchange Exit Number: 19

Secondary Route Interchange Exit Number



Last Date Modified:

Jan 15, 2025

County: **67**

# RMS Interchange Information

Print Form

Interchange Number: **8004**

Bureau of Maintenance & Operations  
Asset Management Division



Interchange Name: **TWIN BRIDGES EXIT # 41**

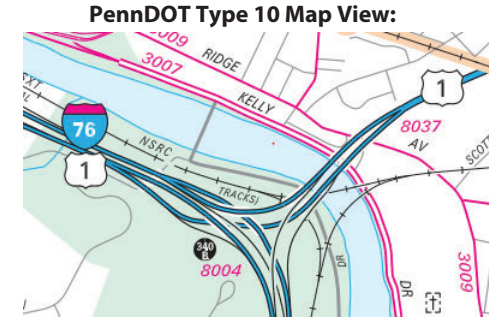
Intersecting SR's: **I-76 Schuylkill Ex & US 1 Roosevelt Blvd Ex**

Ramp Segment Number and Ramp Segment Length Information:

Segment	Length	Segment	Length	Segment	Length	Segment	Length
<b>0010</b>	<b>2140</b>	<b>0510</b>	<b>0835</b>				
<b>0020</b>	<b>0655</b>						
<b>0250</b>	<b>1074</b>						
<b>0260</b>	<b>1192</b>						
<b>0500</b>	<b>3400</b>						

Primary Route Interchange Exit Number: **340B**

Secondary Route Interchange Exit Number: **339**



Last Date Modified: **Mar 29, 2022**

County: **67**

# RMS Interchange Information

Print Form

Interchange Number: **8005**

Bureau of Maintenance & Operations  
Roadway Management Division



Interchange Name: **I 95 & CITY ENTERPRISE AV INT**

Intersecting SR's: **I-95 & CITY Enterprise Av**

Ramp Segment Number and Ramp Segment Length Information:

Segment	Length	Segment	Length	Segment	Length	Segment	Length
<b>0500</b>	<b>1772</b>						
<b>0750</b>	<b>1315</b>						

Primary Route Interchange Exit Number: **15**

Secondary Route Interchange Exit Number

PennDOT Type 10 Map View:



Imagery ©2020 Maxar Technologies, U.S. Geological Survey, USDA Farm Service Agency, Map data ©2020 United States

Last Date Modified: Jul 6, 2020

County: 67

# RMS Interchange Information

Print Form

Interchange Number: 8006

Bureau of Maintenance & Operations  
Roadway Management Division



Interchange Name: MONTEGOMERY DRIVE #43

Intersecting SR's: I-76 & TWP Montgomery Dr

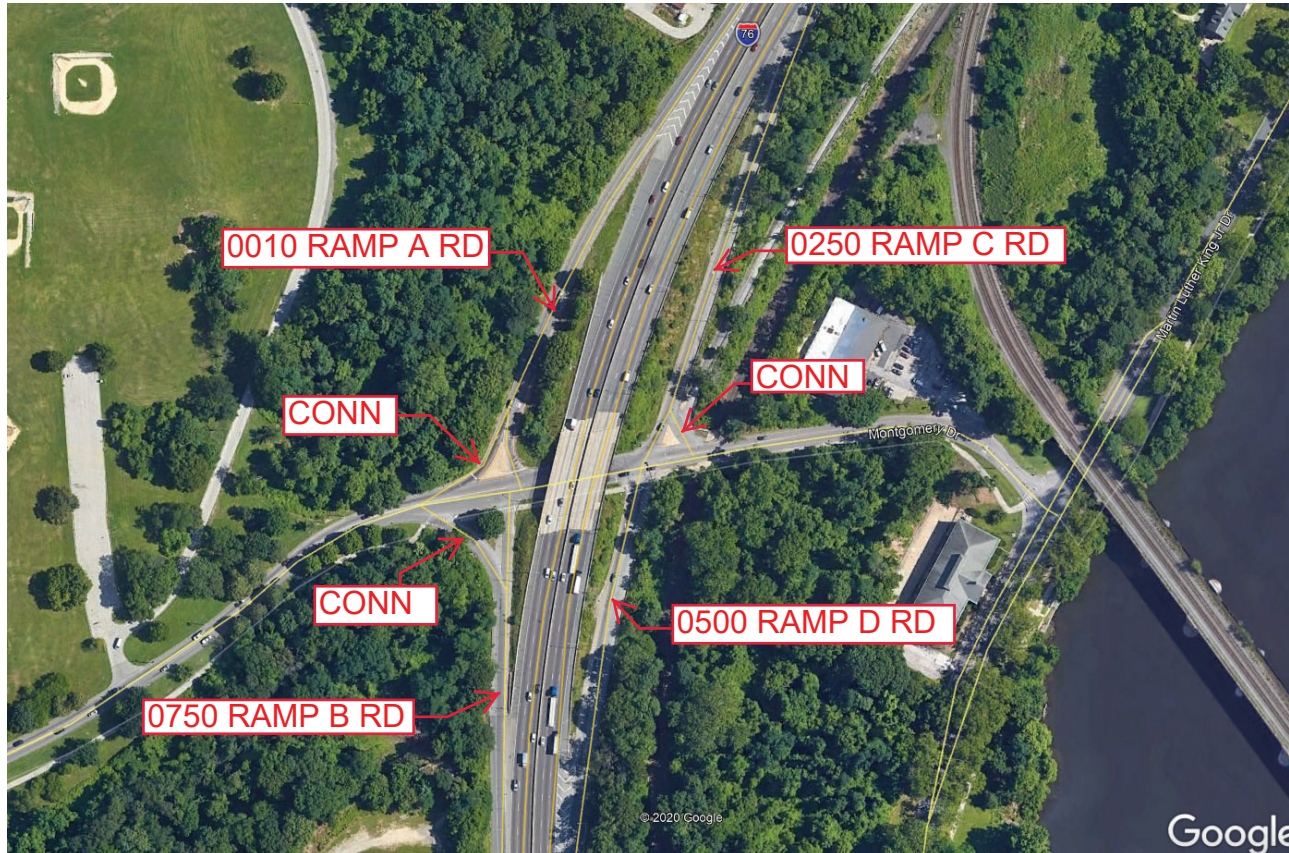
Ramp Segment Number and Ramp Segment Length Information:

Segment	Length	Segment	Length	Segment	Length	Segment	Length
0010	0640						
0250	0660						
0500	0480						
0750	0370						

Primary Route Interchange Exit Number: 341

Secondary Route Interchange Exit Number

PennDOT Type 10 Map View:



Last Date Modified:

Jul 6, 2020

County: 67

# RMS Interchange Information

Print Form

Bureau of Maintenance & Operations  
Roadway Management Division



Interchange Number: 8007

Interchange Name: I-95/2001 EXIT 16 (PART A)

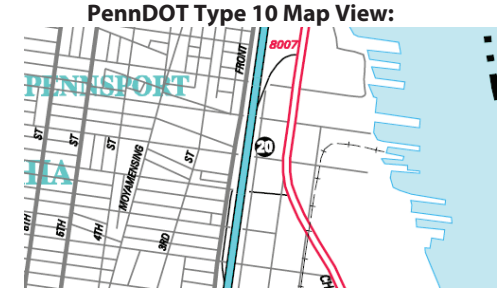
Intersecting SR's: I-95 Delaware Ex & SR 2001 Christopher Columbus Bl

Ramp Segment Number and Ramp Segment Length Information:

Segment	Length	Segment	Length	Segment	Length	Segment	Length
0010	1023						
0020	1696						

Primary Route Interchange Exit Number: 20

Secondary Route Interchange Exit Number



Last Date Modified: Jul 6, 2020

County: 67

# RMS Interchange Information

Print Form

Bureau of Maintenance & Operations  
Asset Management Division



Interchange Number: 8007

Interchange Name: I-95/SR2001 EXIT (PART B)

Intersecting SR's: I-95, SR 2001 Christopher Columbus Bl & SR 2004 Market St

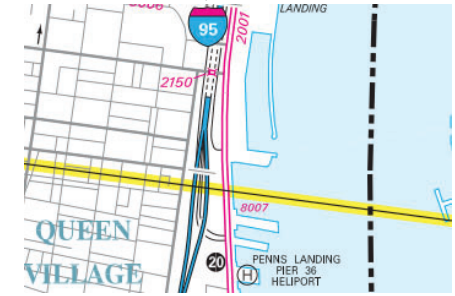
Ramp Segment Number and Ramp Segment Length Information:

Segment	Length	Segment	Length	Segment	Length	Segment	Length
0500	0944						
0510	3390						
0750	0880						
0760	0941						

Primary Route Interchange Exit Number: 20

Secondary Route Interchange Exit Number

PennDOT Type 10 Map View:



Last Date Modified: Jan 24, 2025



County: 67

# RMS Interchange Information

Print Form

Bureau of Maintenance & Operations  
Asset Management Division



Interchange Number: 8008

Interchange Name: GIRARD AVE INT #44

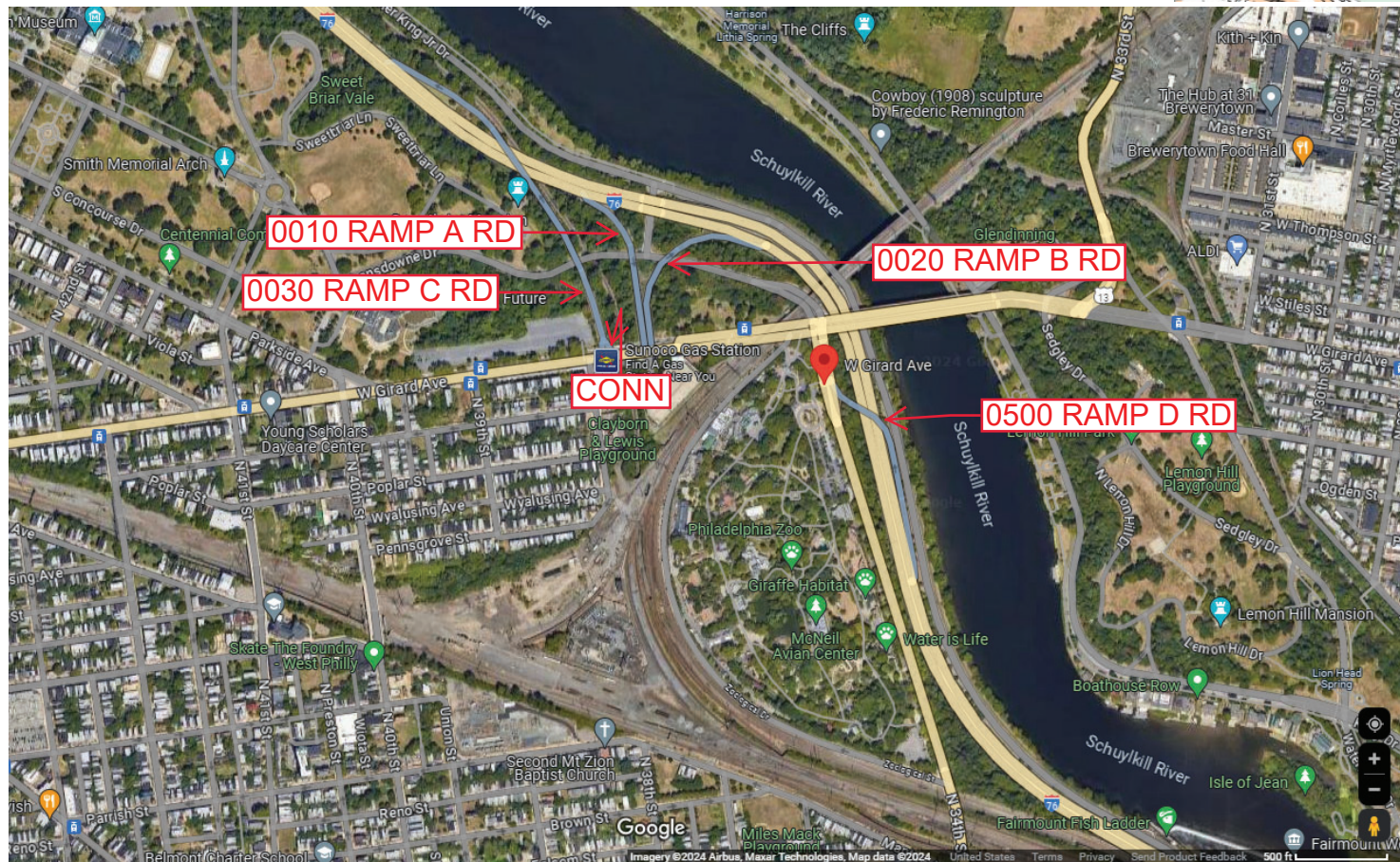
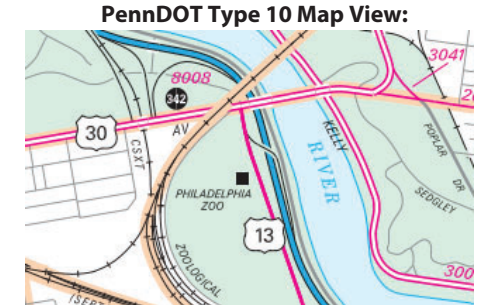
Intersecting SR's: I-76 Schuylkill Ex & US 30 Girard Av

Ramp Segment Number and Ramp Segment Length Information:

Segment	Length	Segment	Length	Segment	Length	Segment	Length
0010	0846						
0020	0898						
0030	1888						
0500	1040						

Primary Route Interchange Exit Number: 342

Secondary Route Interchange Exit Number



Last Date Modified: Jul 3, 2024

County: 67

# RMS Interchange Information

Print Form

Interchange Number: 8009

Bureau of Maintenance & Operations  
Roadway Management Division



Interchange Name: VINE ST INT EX 17

Intersecting SR's: I-95 Delaware Ex & I-676 Vine St Ex

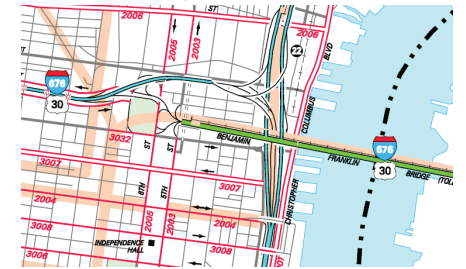
Ramp Segment Number and Ramp Segment Length Information:

Segment	Length	Segment	Length	Segment	Length	Segment	Length
0010	3520	0270	1752				
0020	2770	0500	0650				
0030	0300	0510	2720				
0250	2890	0520	1075				
0260	1109						

Primary Route  
Interchange Exit  
Number

Secondary Route  
Interchange Exit  
Number

PennDOT Type 10 Map View:



Last Date Modified:

May 14, 2020

County: 67

# RMS Interchange Information

Print Form

Interchange Number: 8009

Bureau of Maintenance & Operations  
Roadway Management Division



Interchange Name: VINE STREET INT EX 17 (Part B)

Intersecting SR's: I-95 Delaware Ex & SR 2001 Christopher Columbus Bl

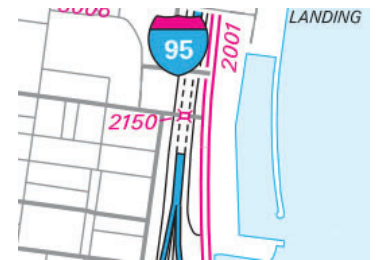
Ramp Segment Number and Ramp Segment Length Information:

Segment	Length	Segment	Length	Segment	Length	Segment	Length
0010	3520	0270	1840				
0020	2770	0500	0600				
0030	0300	0510	2720				
0250	2890	0520	1075				
0260	1000						

Primary Route Interchange Exit Number

Secondary Route Interchange Exit Number

PennDOT Type 10 Map View:



Aerial

Navigation controls: Home, Back, Forward, Zoom In (+), Zoom Out (-)

Feedback

Scale: 100 feet / 25 m

© Vexcel Imaging

© 2020 Microsoft

Last Date Modified:

Jul 6, 2020

County: 67

# RMS Interchange Information

Print Form

Interchange Number: 8010

Bureau of Maintenance & Operations  
Asset Management Division



Interchange Name: SPRING GARDEN STREET #35

Intersecting SR's: I-76 Schuylkill Ex & SR 3014 Spring Garden St

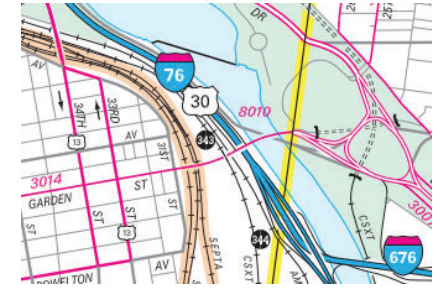
Ramp Segment Number and Ramp Segment Length Information:

Segment	Length	Segment	Length	Segment	Length	Segment	Length
0010	0604						
0250	0615						

Primary Route Interchange Exit Number: 343

Secondary Route Interchange Exit Number

PennDOT Type 10 Map View:



Last Date Modified: Jan 15, 2025

County: 67

# RMS Interchange Information

Print Form

Interchange Number: 8011

Bureau of Maintenance & Operations  
Asset Management Division



Interchange Name: GIRARD AVE INT

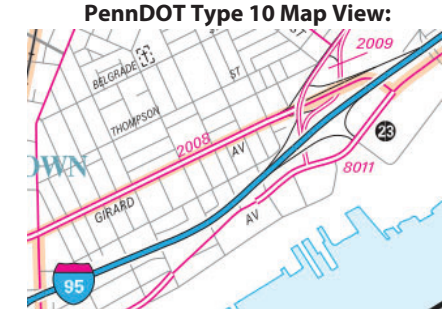
Intersecting SR's: I-95, SR 2008 Girard Av & SR 2008 Aramingo Av

Ramp Segment Number and Ramp Segment Length Information:

Segment	Length	Segment	Length	Segment	Length	Segment	Length
0020	1000	0530	0247				
0250	0901	0750	1120				
0260	0412						
0500	1488						
0510	1009						

Primary Route Interchange Exit Number: 23

Secondary Route Interchange Exit Number



Last Date Modified: Jul 15, 2024

County: 67

# RMS Interchange Information

Print Form

Interchange Number: 8012

Bureau of Maintenance & Operations  
Asset Management Division



Interchange Name: VINE STREET #1

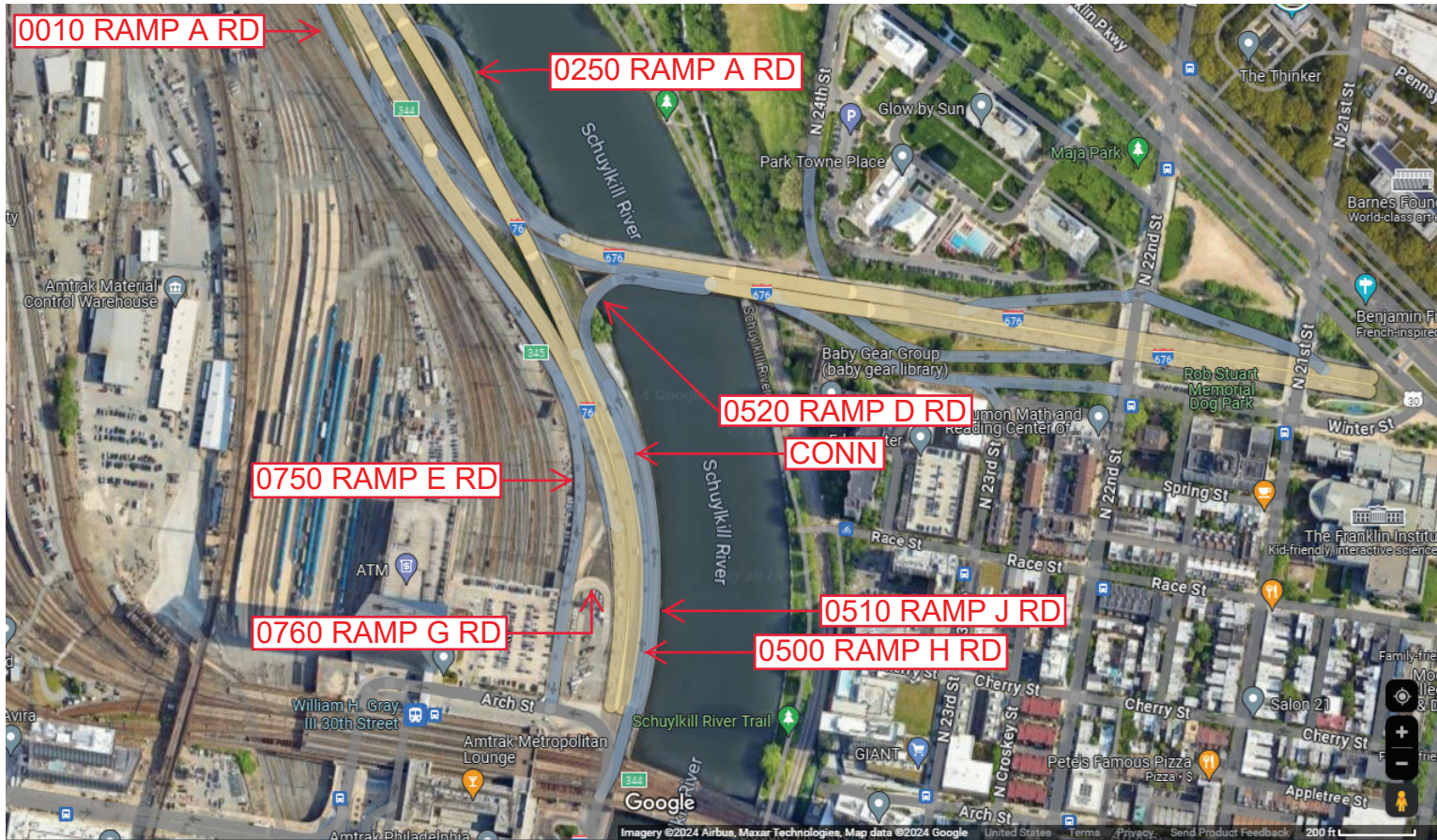
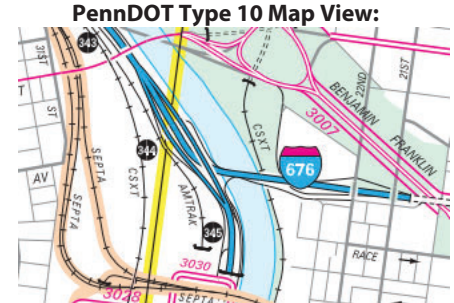
Intersecting SR's: I-76, I-676 & SR 3030 Arch St

Ramp Segment Number and Ramp Segment Length Information:

Segment	Length	Segment	Length	Segment	Length	Segment	Length
0010	0710	0750	0750				
0250	2035	0760	0575				
0500	0930						
0510	1012						
0520	0445						

Primary Route Interchange Exit Number: 344

Secondary Route Interchange Exit Number



Last Date Modified: Dec 6, 2024

County: 67

# RMS Interchange Information

Print Form

Interchange Number: 8013

Bureau of Maintenance & Operations  
Asset Management Division



Interchange Name: ALLEGHENY AVE INT

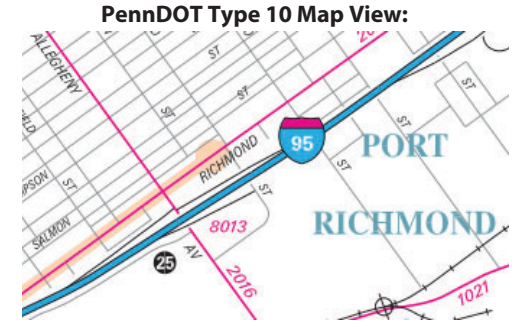
Intersecting SR's: I-95, SR 2016 Allegheny Av & CITY Westmoreland St

Ramp Segment Number and Ramp Segment Length Information:

Segment	Length	Segment	Length	Segment	Length	Segment	Length
0250	0626						
0500	0590						
0750	0620						

Primary Route Interchange Exit Number: 25

Secondary Route Interchange Exit Number



Last Date Modified:

Jul 15, 2024

County: 67

# RMS Interchange Information

Print Form

Interchange Number: 8014

Bureau of Maintenance & Operations  
Asset Management Division



Interchange Name: CHESTNUT & WALNUT ST # 2

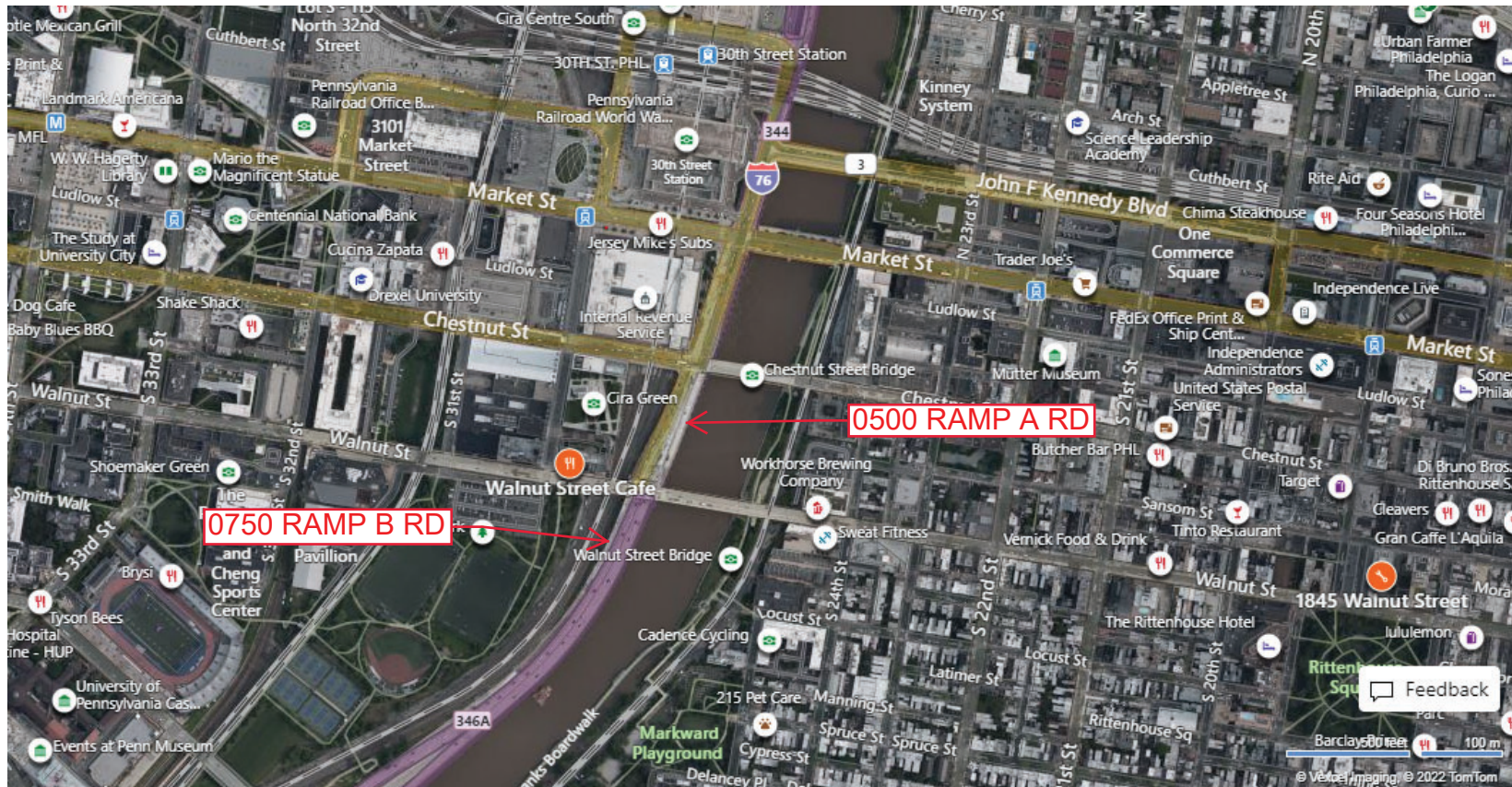
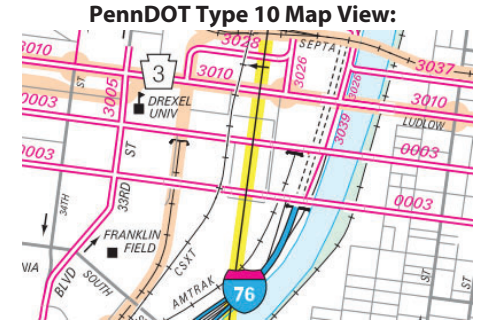
Intersecting SR's: I-76 & PA 3 Chestnut St & Walnut St

Ramp Segment Number and Ramp Segment Length Information:

Segment	Length	Segment	Length	Segment	Length	Segment	Length
0500	0425						
0750	1280						

Primary Route Interchange Exit Number: 345

Secondary Route Interchange Exit Number



Last Date Modified: Mar 29, 2022



County: 67

# RMS Interchange Information

Print Form

Interchange Number: 8015

Bureau of Maintenance & Operations  
Roadway Management Division



Interchange Name: CASTOR AV INT

Intersecting SR's: I-95 & SR 1005 Castor Av

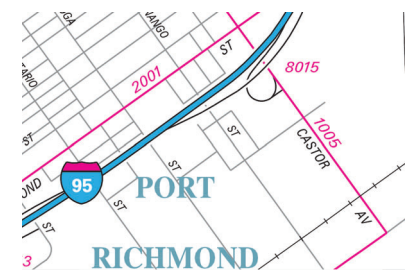
Ramp Segment Number and Ramp Segment Length Information:

Segment	Length	Segment	Length	Segment	Length	Segment	Length
0010	0960						

Primary Route Interchange Exit Number

Secondary Route Interchange Exit Number

PennDOT Type 10 Map View:



Last Date Modified: May 20, 2020

County: 67

# RMS Interchange Information

Print Form

Bureau of Maintenance & Operations  
Asset Management Division



Interchange Number: 8016

Interchange Name: SOUTH ST EXIT #3

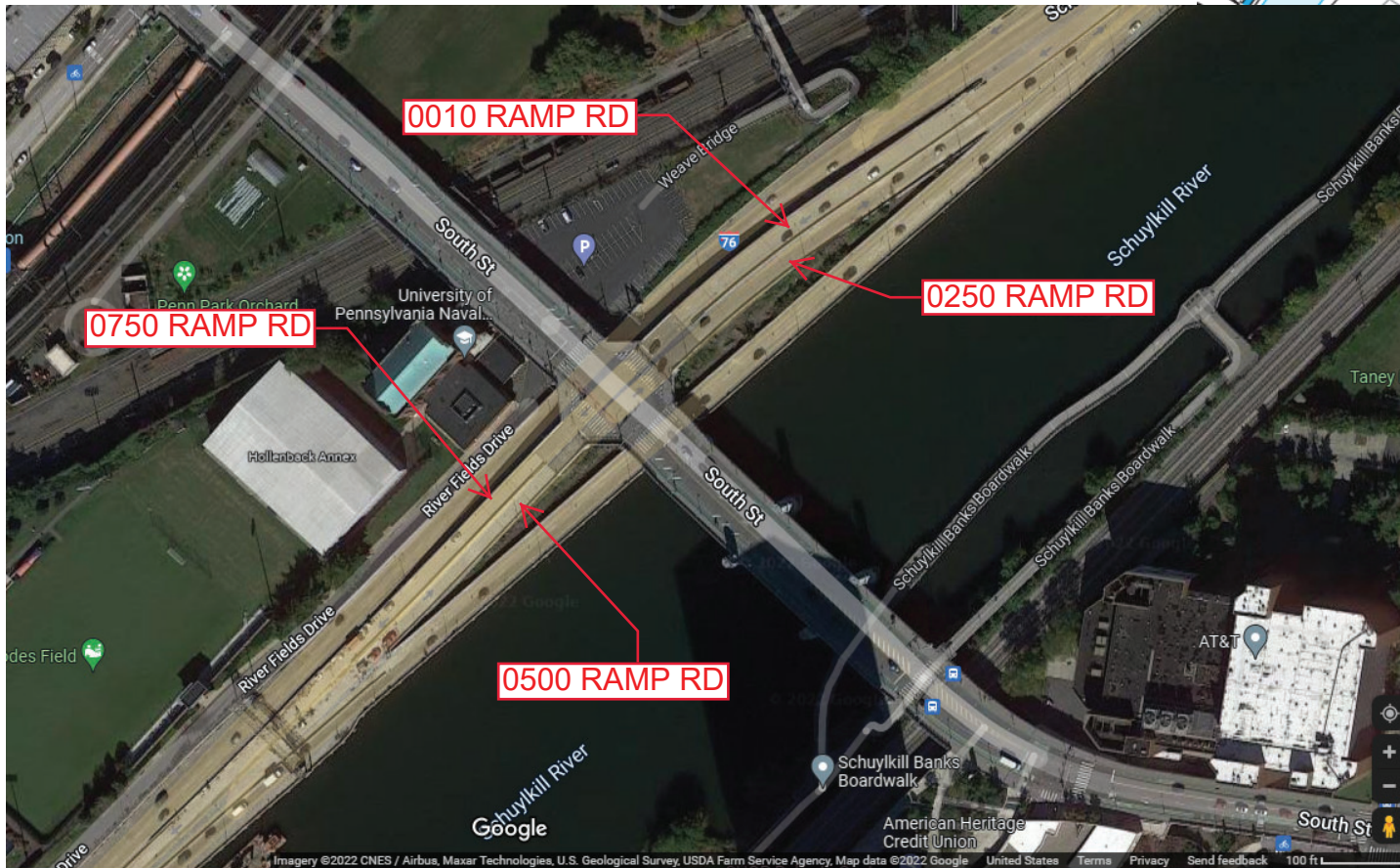
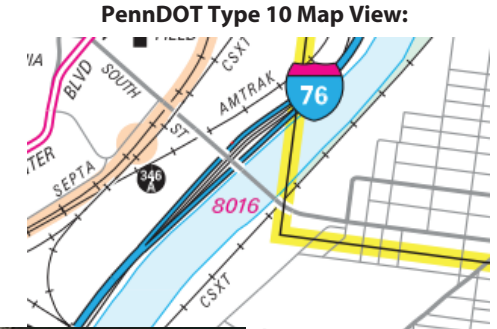
Intersecting SR's: I-76 Schuylkill Ex & CITY South St

Ramp Segment Number and Ramp Segment Length Information:

Segment	Length	Segment	Length	Segment	Length	Segment	Length
0010	0555						
0250	0545						
0500	0572						
0750	0765						

Primary Route Interchange Exit Number: 346A

Secondary Route Interchange Exit Number



Last Date Modified:

Mar 11, 2022

County: 67

# RMS Interchange Information

Print Form

Bureau of Maintenance & Operations  
Roadway Management Division



Interchange Number: 8017

Interchange Name: SR I-95 & BETSY ROSS INTERCHANGE

Intersecting SR's: I-95, SR 8017 & Betsy Ross Br

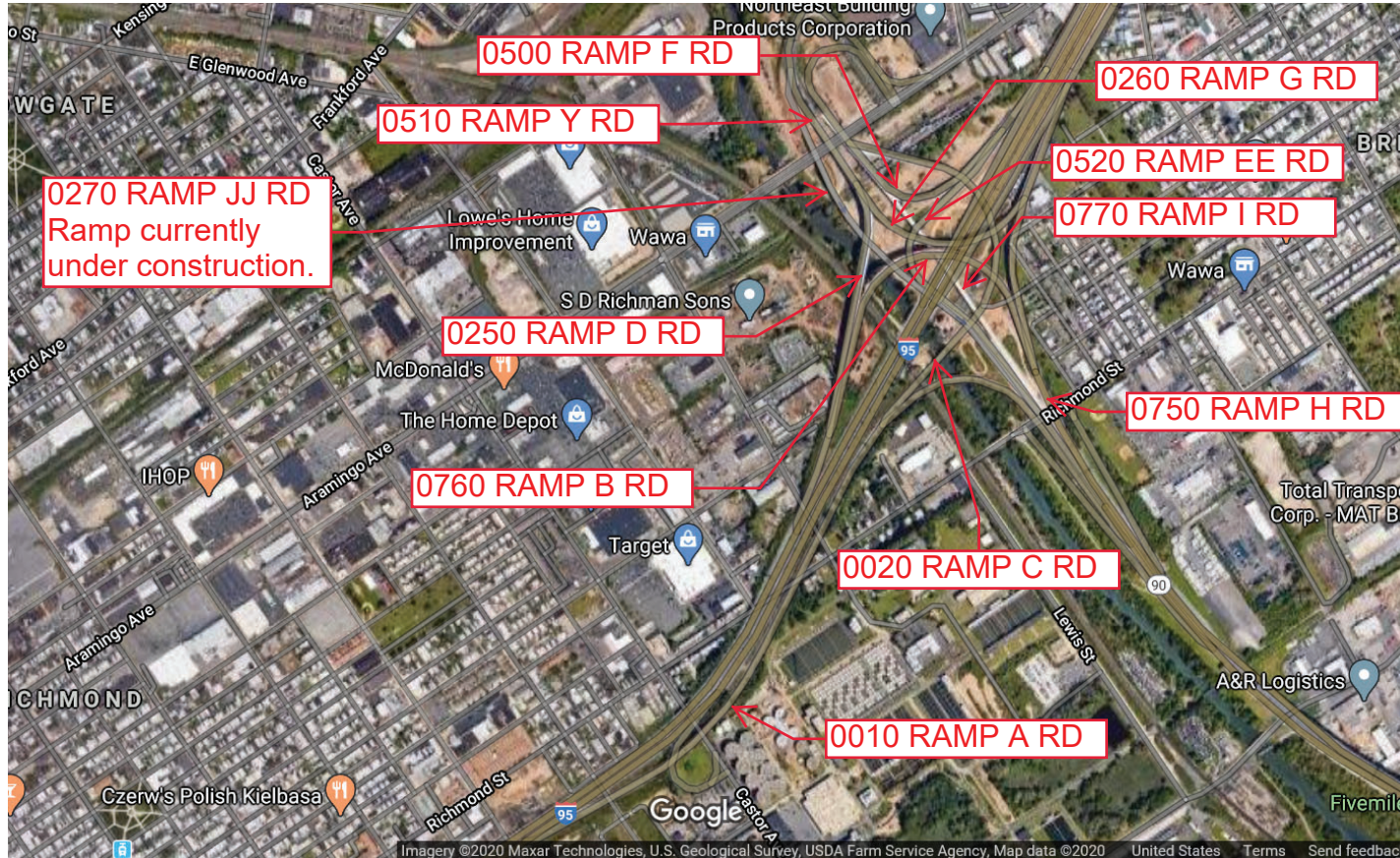
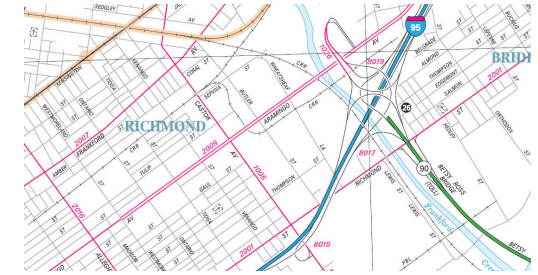
Ramp Segment Number and Ramp Segment Length Information:

Segment	Length	Segment	Length	Segment	Length	Segment	Length
0010	4430	0500	3595	0770	1409		
0020	2676	0510	1904				
0250	2672	0520	2162				
0260	1247	0750	2040				
0270	2762	0760	1445				

Primary Route Interchange Exit Number

Secondary Route Interchange Exit Number

PennDOT Type 10 Map View:



Last Date Modified:

Mar 5, 2019

County: 67

# RMS Interchange Information

Print Form

Interchange Number: 8018

Bureau of Maintenance & Operations  
Roadway Management Division



Interchange Name: CIVIC CENTER EXIT #3

Intersecting SR's: I-76 Schuylkill Ex, & SR 3003 University Av/Thirtyfourth St

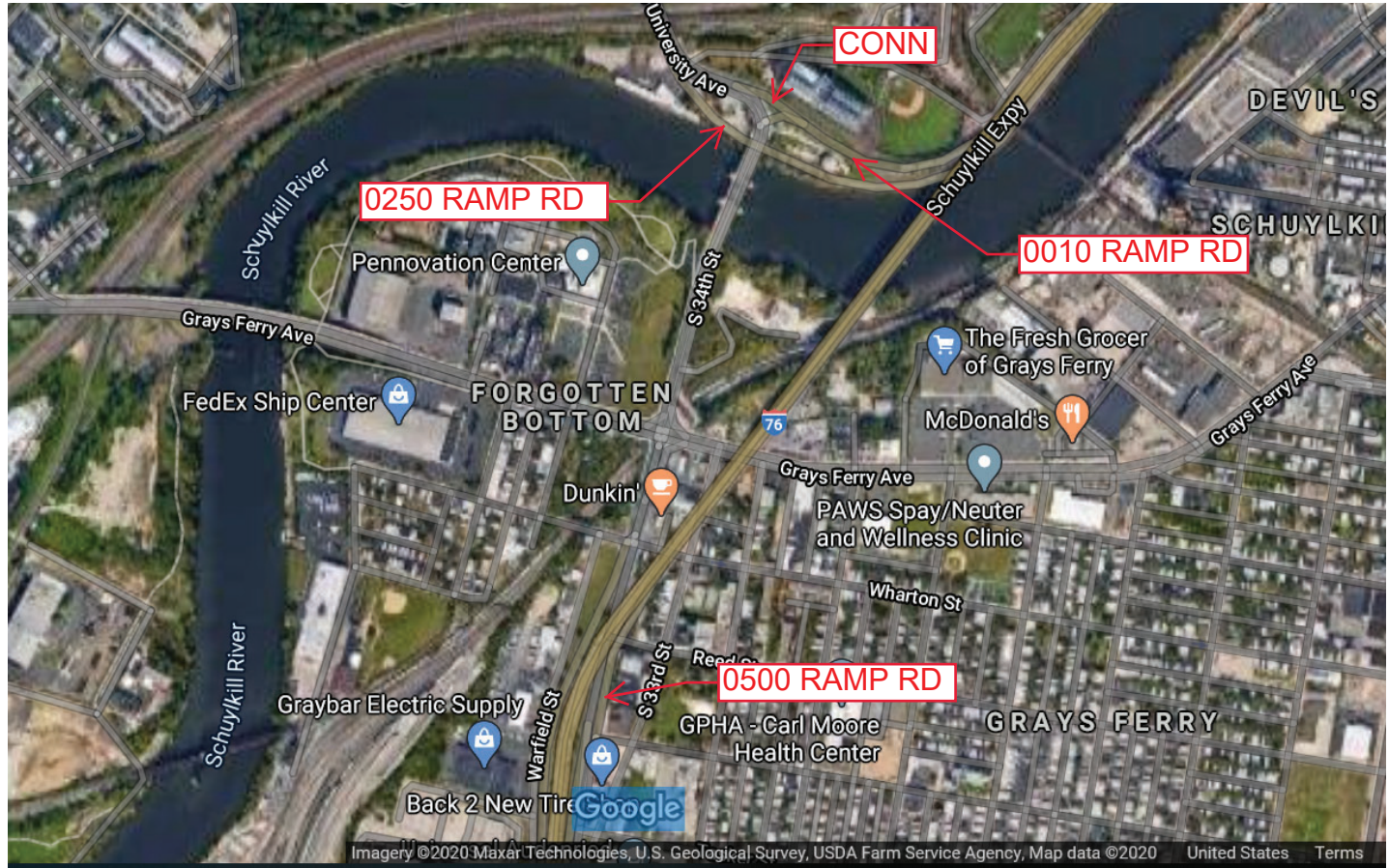
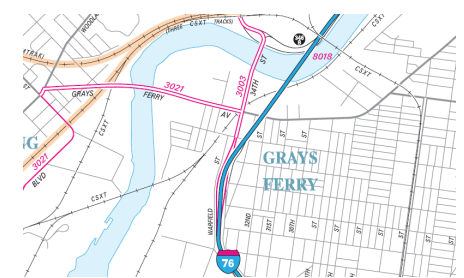
Ramp Segment Number and Ramp Segment Length Information:

Segment	Length	Segment	Length	Segment	Length	Segment	Length
0010	1121						
0250	2365						
0500	0730						

Primary Route Interchange Exit Number: 346B

Secondary Route Interchange Exit Number

PennDOT Type 10 Map View:



Last Date Modified: May 21, 2020

County: 67

# RMS Interchange Information

Print Form

Interchange Number: 8019

Bureau of Maintenance & Operations  
Roadway Management Division



Interchange Name: ARAMINGO AV INT

Intersecting SR's: I-95 Delaware Ex, SR 2009 Aramingo Av & SR 8017

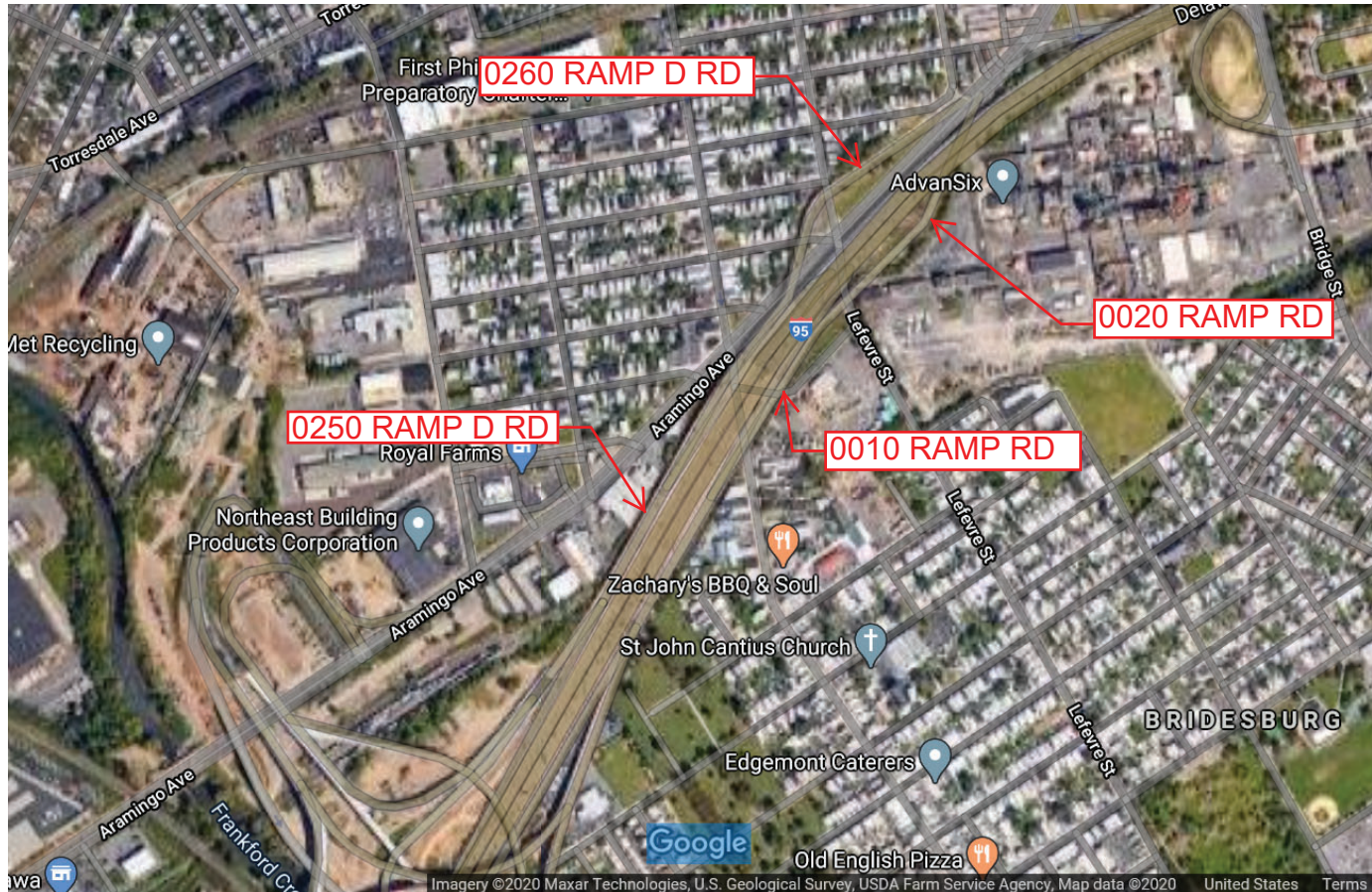
Ramp Segment Number and Ramp Segment Length Information:

Segment	Length	Segment	Length	Segment	Length	Segment	Length
0010	2730						
0020	1600						
0250	2639						
0260	1693						

Primary Route  
Interchange Exit  
Number

Secondary Route  
Interchange Exit  
Number

PennDOT Type 10 Map View:



Last Date Modified:

May 21, 2020

County: 67

# RMS Interchange Information

Print Form

Interchange Number: 8020

Bureau of Maintenance & Operations  
Roadway Management Division



Interchange Name: PASSAYUNK AV EXIT #5

Intersecting SR's: I-76, SR 3003 Twentysixth St & SR 3019 Passyunk Av

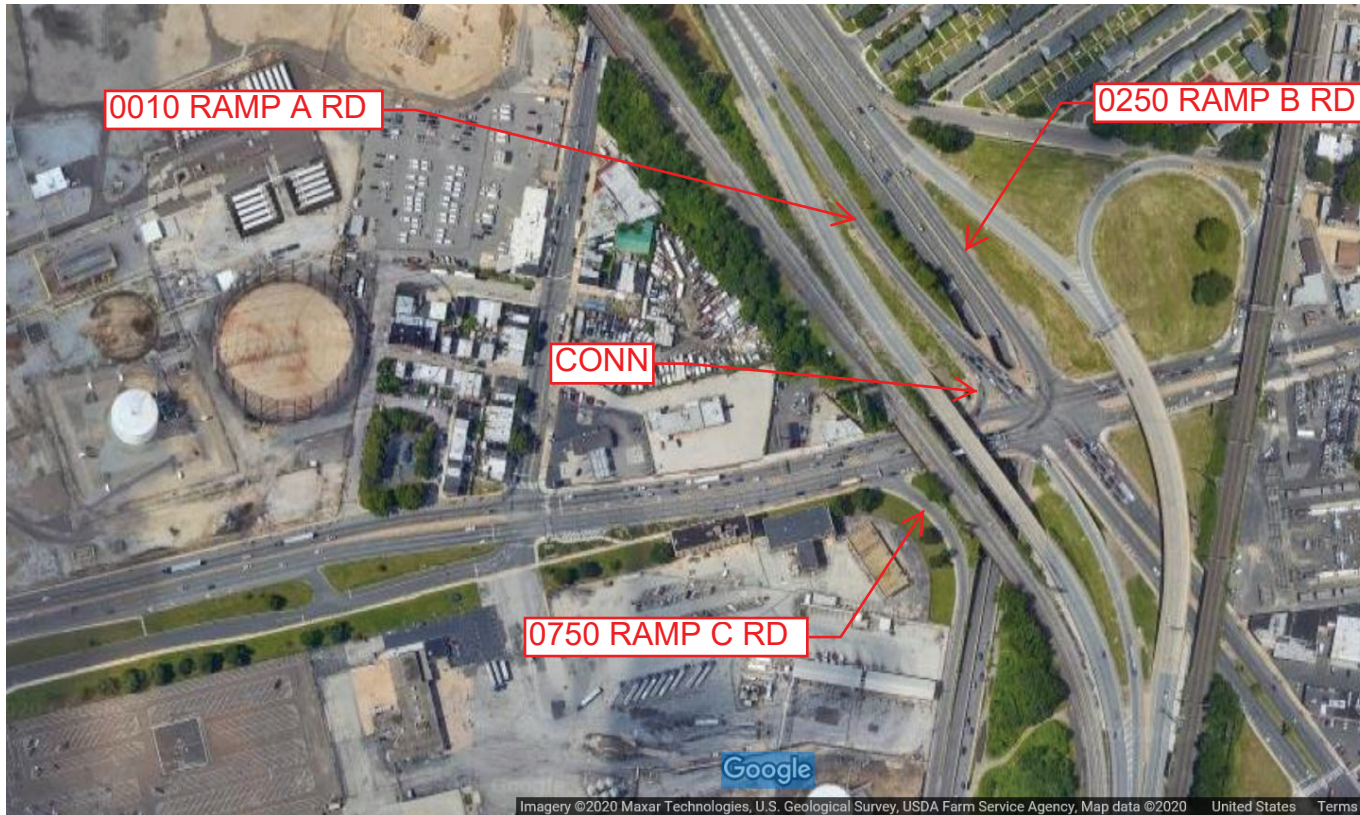
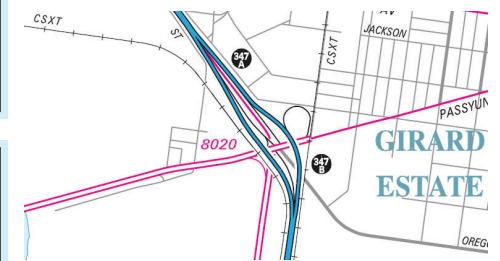
Ramp Segment Number and Ramp Segment Length Information:

Segment	Length	Segment	Length	Segment	Length	Segment	Length
0010	0815						
0250	0550						
0750	0647						

Primary Route Interchange Exit Number

Secondary Route Interchange Exit Number

PennDOT Type 10 Map View:



Last Date Modified:

Jul 6, 2020

County: **67**

# RMS Interchange Information

Print Form

Bureau of Maintenance & Operations  
Asset Management Division



Interchange Number: **8021**

Interchange Name: **BRIDGE STREET INT**

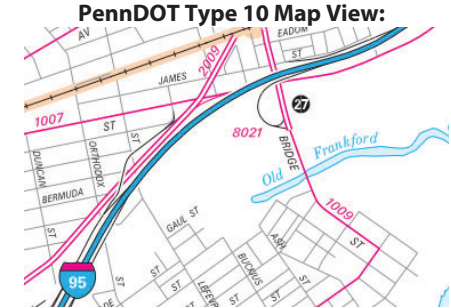
Intersecting SR's: **I-95 Delaware Ex & SR 1009 Bridge St**

Ramp Segment Number and Ramp Segment Length Information:

Segment	Length	Segment	Length	Segment	Length	Segment	Length
<b>0010</b>	<b>1099</b>						
<b>0500</b>	<b>1051</b>						

Primary Route Interchange Exit Number: **27**

Secondary Route Interchange Exit Number



Last Date Modified: **Jun 27, 2024**

County: 67

# RMS Interchange Information

Print Form

Interchange Number: 8023

Bureau of Maintenance & Operations  
Asset Management Division



Interchange Name: COTTMAN AVENUE INT

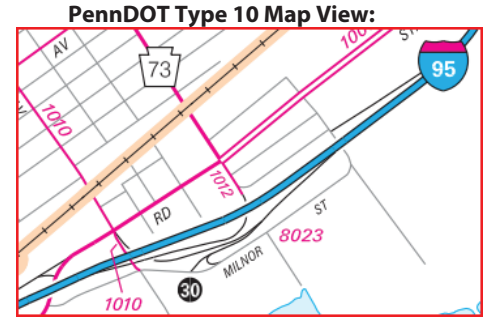
Intersecting SR's: I-95 Delaware Ex, PA 73 State St & SR 1012 Cottman Av

Ramp Segment Number and Ramp Segment Length Information:

Segment	Length	Segment	Length	Segment	Length	Segment	Length
0010	1270	0500	0850				
0252	0735						
0260	1850						
0270	0690						
0280	0330						

Primary Route Interchange Exit Number: 30

Secondary Route Interchange Exit Number



Last Date Modified: Jan 28, 2025



County: 67

# RMS Interchange Information

Print Form

Bureau of Maintenance & Operations  
Asset Management Division



Interchange Number: 8025

Interchange Name: ACADEMY ROAD INT

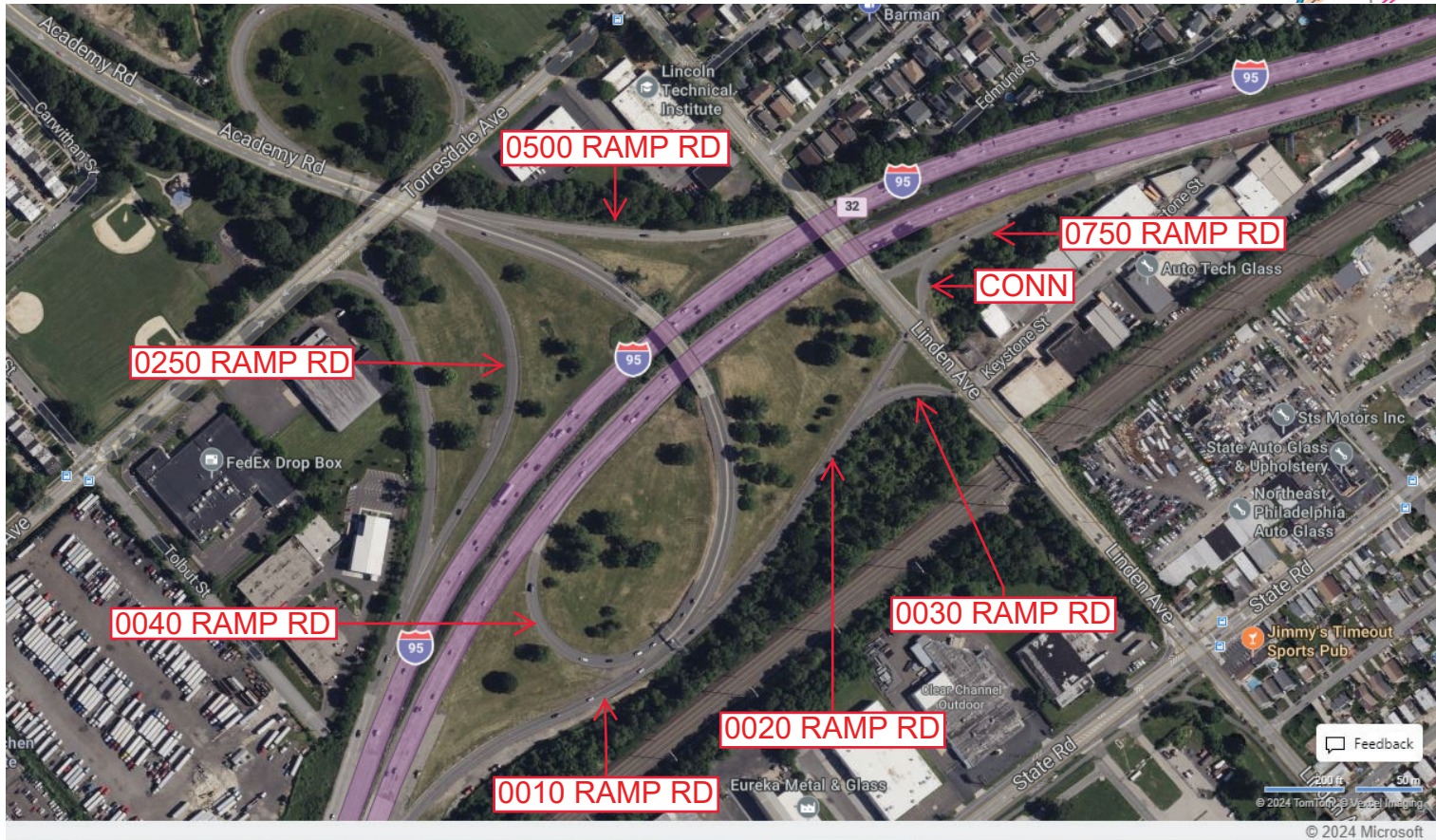
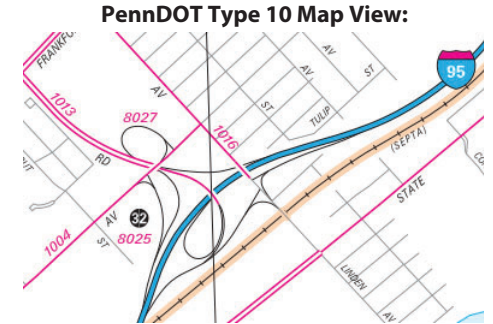
Intersecting SR's: I-95, SR 1013 Academy Rd & SR 1016 Linden Av

Ramp Segment Number and Ramp Segment Length Information:

Segment	Length	Segment	Length	Segment	Length	Segment	Length
0010	1524	0500	0640				
0020	0878	0750	0580				
0030	0210						
0040	1251						
0250	1205						

Primary Route Interchange Exit Number: 32

Secondary Route Interchange Exit Number



Last Date Modified:

Jun 28, 2024

County: 67

# RMS Interchange Information

Print Form

Bureau of Maintenance & Operations  
Asset Management Division



Interchange Number: 8027

Interchange Name: ACADEMY ROAD INT

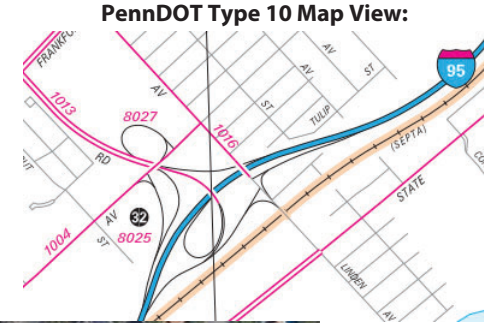
Intersecting SR's: SR 1004 Torresdale Av & SR 1013 Academy Rd

Ramp Segment Number and Ramp Segment Length Information:

Segment	Length	Segment	Length	Segment	Length	Segment	Length
0010	0790						
0500	1058						

Primary Route Interchange Exit Number

Secondary Route Interchange Exit Number



Last Date Modified: Jun 28, 2024

County: 67

# RMS Interchange Information

Print Form

Interchange Number: 8029

Bureau of Maintenance & Operations  
Asset Management Division



Interchange Name: KNIGHTS ROAD INT (A)

Intersecting SR's: PA 63 Woodhaven Rd & SR 1015 Knights Rd

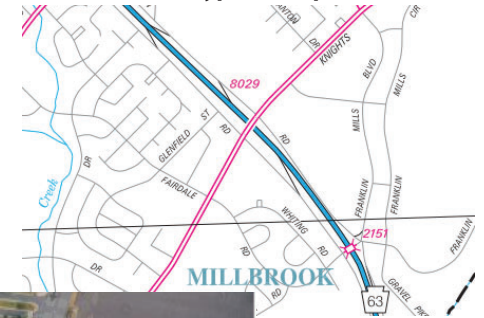
Ramp Segment Number and Ramp Segment Length Information:

Segment	Length	Segment	Length	Segment	Length	Segment	Length
0010	0852						
0250	0500						
0500	0615						
0750	1304						

Primary Route Interchange Exit Number

Secondary Route Interchange Exit Number

PennDOT Type 10 Map View:



Last Date Modified: Jun 28, 2024

County: 67

# RMS Interchange Information

Bureau of Maintenance & Operations  
Asset Management Division

Print Form



Interchange Number: 8029

Interchange Name: KNIGHTS ROAD INT (B)

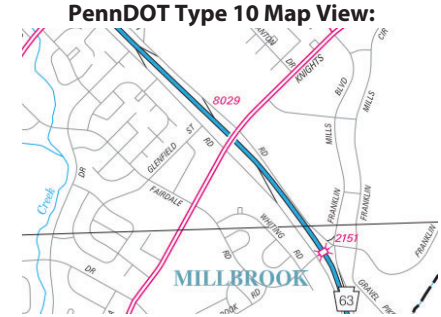
Intersecting SR's: PA 63 Woodhaven Rd & CITY Woodhaven Rd

Ramp Segment Number and Ramp Segment Length Information:

Segment	Length	Segment	Length	Segment	Length	Segment	Length
0010	0852						
0250	0500						
0500	0615						
0750	1304						

Primary Route Interchange Exit Number

Secondary Route Interchange Exit Number



Last Date Modified: Jun 28, 2024

County: **67**

# RMS Interchange Information

Print Form

Interchange Number: **8031**

Bureau of Maintenance & Operations  
Asset Management Division



Interchange Name: **THORNTON ROAD INT**

Intersecting SR's: **PA 63 Woodhaven Rd & CITY Wddhaven RD/Thornton Rd**

Ramp Segment Number and Ramp Segment Length Information:

Segment	Length	Segment	Length	Segment	Length	Segment	Length
<b>0012</b>	<b>1000</b>						
<b>0252</b>	<b>0449</b>						
<b>0502</b>	<b>0775</b>						
<b>0752</b>	<b>0632</b>						

Primary Route Interchange Exit Number

Secondary Route Interchange Exit Number

PennDOT Type 10 Map View:



Last Date Modified: **Jul 1, 2024**

County: 67

# RMS Interchange Information

Print Form

Interchange Number: 8033

Bureau of Maintenance & Operations  
Asset Management Division



Interchange Name: WOODHAVEN ROAD INT

Intersecting SR's: US 1, PA 63, SR 1022 Woodhaven Rd & SR 6001 Roosevelt

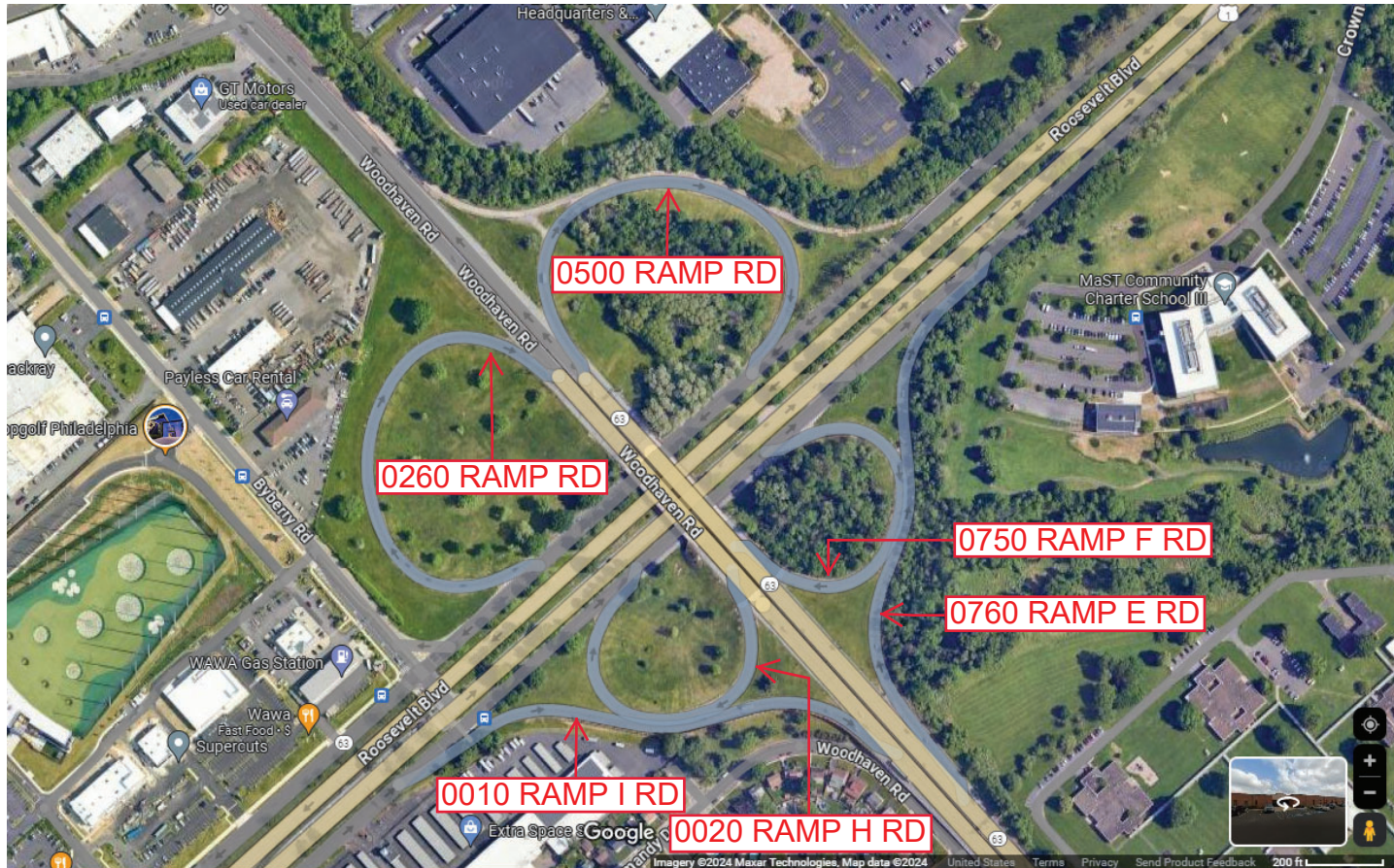
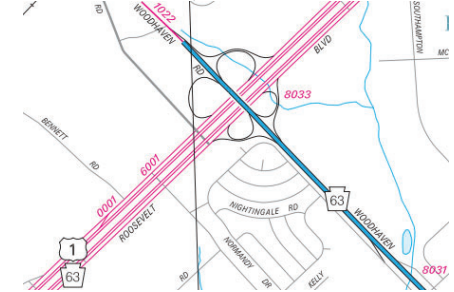
Ramp Segment Number and Ramp Segment Length Information:

Segment	Length	Segment	Length	Segment	Length	Segment	Length
0010	1067	0760	1030				
0020	0846						
0260	1165						
0500	1211						
0750	0805						

Primary Route  
Interchange Exit  
Number

Secondary Route  
Interchange Exit  
Number

PennDOT Type 10 Map View:



Last Date Modified:

Jul 1, 2024

County: 67

# RMS Interchange Information

Print Form

Bureau of Maintenance & Operations  
Asset Management Division



Interchange Number: 8035

Interchange Name: PENROSE AVE INT

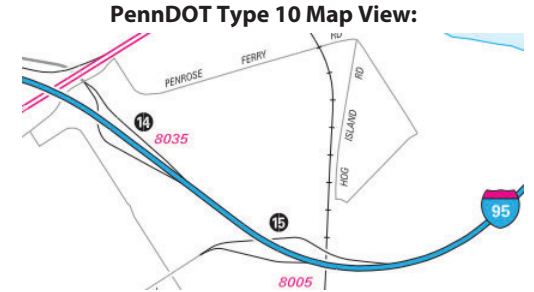
Intersecting SR's: I-95, CITY Penrose Ferry Rd & CITY Bartram Av

Ramp Segment Number and Ramp Segment Length Information:

Segment	Length	Segment	Length	Segment	Length	Segment	Length
0500	1000						
0750	1400						

Primary Route Interchange Exit Number: 14

Secondary Route Interchange Exit Number



Last Date Modified:

Jul 1, 2024

County: 67

# RMS Interchange Information

Print Form

Bureau of Maintenance & Operations  
Asset Management Division



Interchange Number: 8037

Interchange Name: RIDGE AVE INT

Intersecting SR's: US 1 Roosevelt Bl Ex & SR 3009 Ridge Av

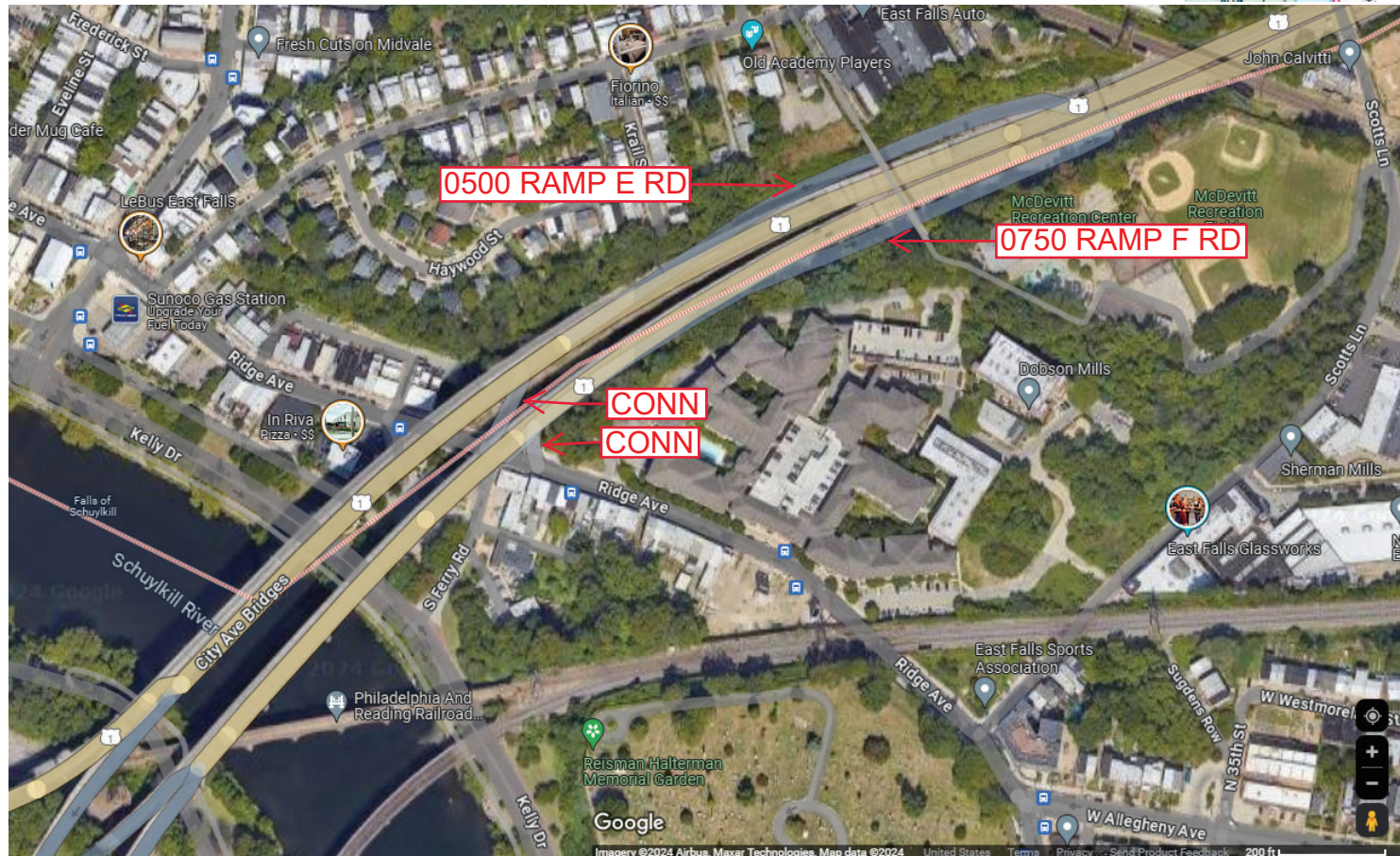
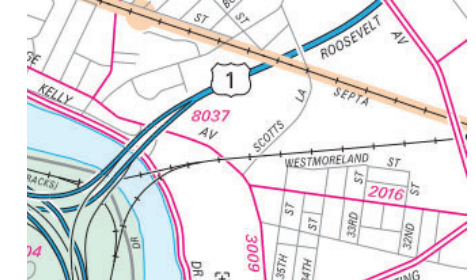
Ramp Segment Number and Ramp Segment Length Information:

Segment	Length	Segment	Length	Segment	Length	Segment	Length
0500	1215						
0750	1200						

Primary Route Interchange Exit Number

Secondary Route Interchange Exit Number

PennDOT Type 10 Map View:



Last Date Modified: Jul 3, 2024



County: 67

# RMS Interchange Information

Print Form

Bureau of Maintenance & Operations  
Asset Management Division



Interchange Number: 8039

Interchange Name: FOX STREET INT

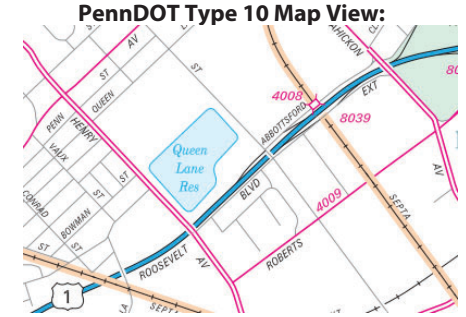
Intersecting SR's: US 1 Roosevelt Bl Ex, CITY Abbottsford Av & CITY Fox St

Ramp Segment Number and Ramp Segment Length Information:

Segment	Length	Segment	Length	Segment	Length	Segment	Length
0250	0440						

Primary Route Interchange Exit Number

Secondary Route Interchange Exit Number



Last Date Modified: Jul 3, 2024

County: 67

# RMS Interchange Information

Print Form

Bureau of Maintenance & Operations  
Asset Management Division



Interchange Number: 8041

Interchange Name: ROBERTS AVE INT

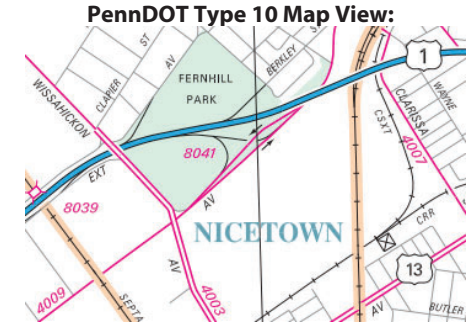
Intersecting SR's: US 1 Roosevelt Bl Ex & SR 4009 Roberts Av

Ramp Segment Number and Ramp Segment Length Information:

Segment	Length	Segment	Length	Segment	Length	Segment	Length
0010	0680						
0020	0600						
0250	0390						
0260	0580						

Primary Route Interchange Exit Number

Secondary Route Interchange Exit Number



Last Date Modified: Jul 8, 2024

County: 67

# RMS Interchange Information

Print Form

Interchange Number: 8043

Bureau of Maintenance & Operations  
Asset Management Division



Interchange Name: BROAD STREET INT

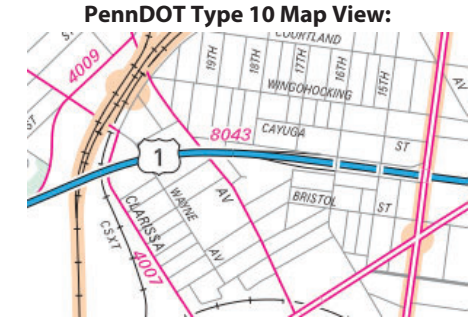
Intersecting SR's: US 1 Roosevelt Bp, CITY Cayuga St & CITY Sixteenth St

Ramp Segment Number and Ramp Segment Length Information:

Segment	Length	Segment	Length	Segment	Length	Segment	Length
0010	0620						
0250	0156						

Primary Route Interchange Exit Number

Secondary Route Interchange Exit Number



Last Date Modified:

Jul 8, 2024

County: 67

# RMS Interchange Information

Bureau of Maintenance & Operations  
Asset Management Division

Print Form



Interchange Number: 8045

Interchange Name: GUSTINE LAKE EXIT #32

Intersecting SR's: SR 3007 Kelly Dr, SSR 3009 Ridge Av & SR 4006 City Av

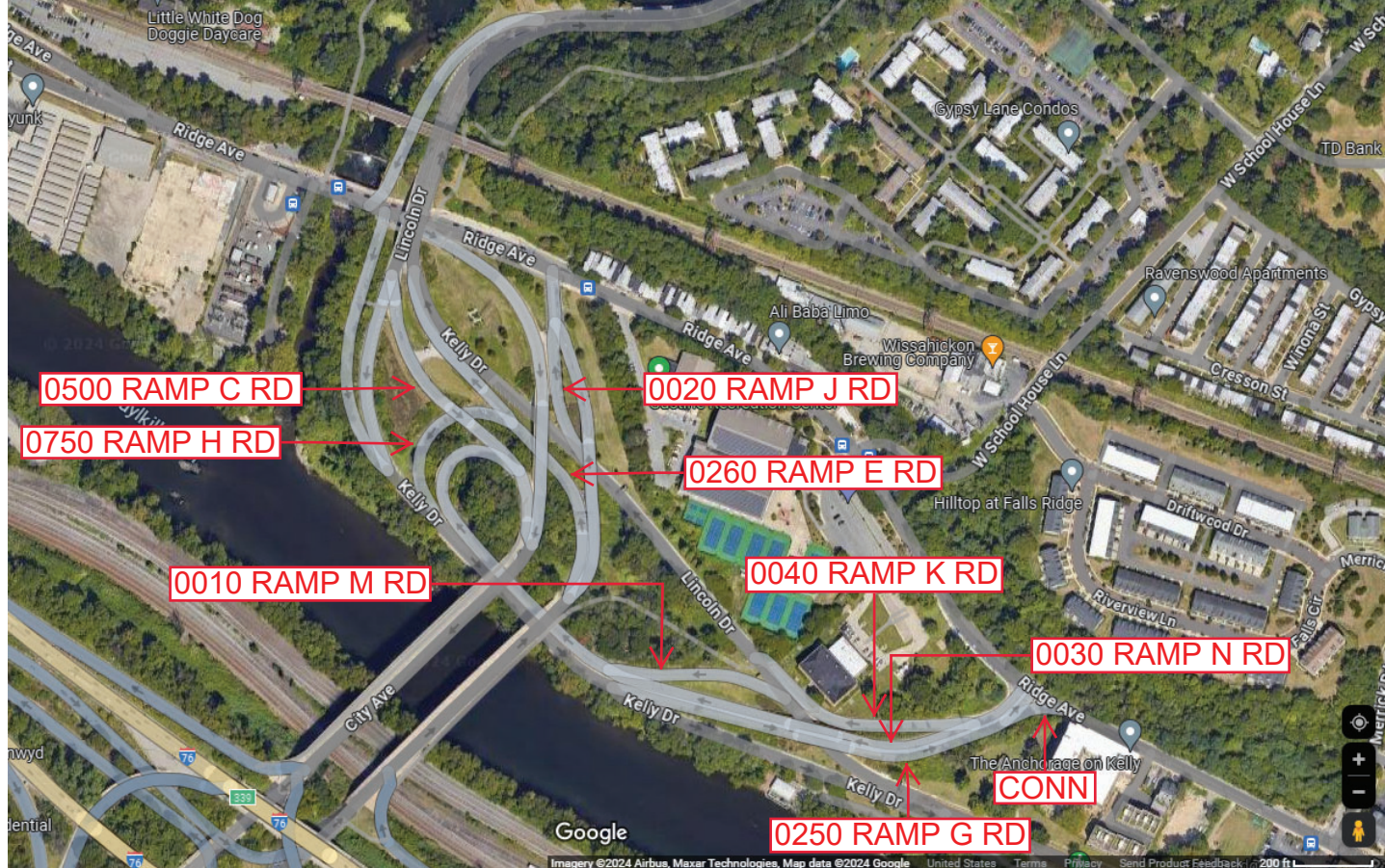
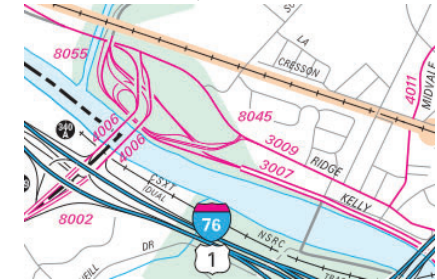
Ramp Segment Number and Ramp Segment Length Information:

Segment	Length	Segment	Length	Segment	Length	Segment	Length
0010	0300	0260	0500				
0020	0430	0500	0450				
0030	2128	0750	0360				
0040	0468						
0250	1040						

Primary Route Interchange Exit Number

Secondary Route Interchange Exit Number

PennDOT Type 10 Map View:



Last Date Modified:

Jul 8, 2024

County: 67

# RMS Interchange Information

Print Form

Interchange Number: 8047

Bureau of Maintenance & Operations  
Asset Management Division



Interchange Name: I-95 & PHILA INT AIRPORT

Intersecting SR's: I-95, SR 9403 & SR 9405 I-95 Collector Rd & SR 0291

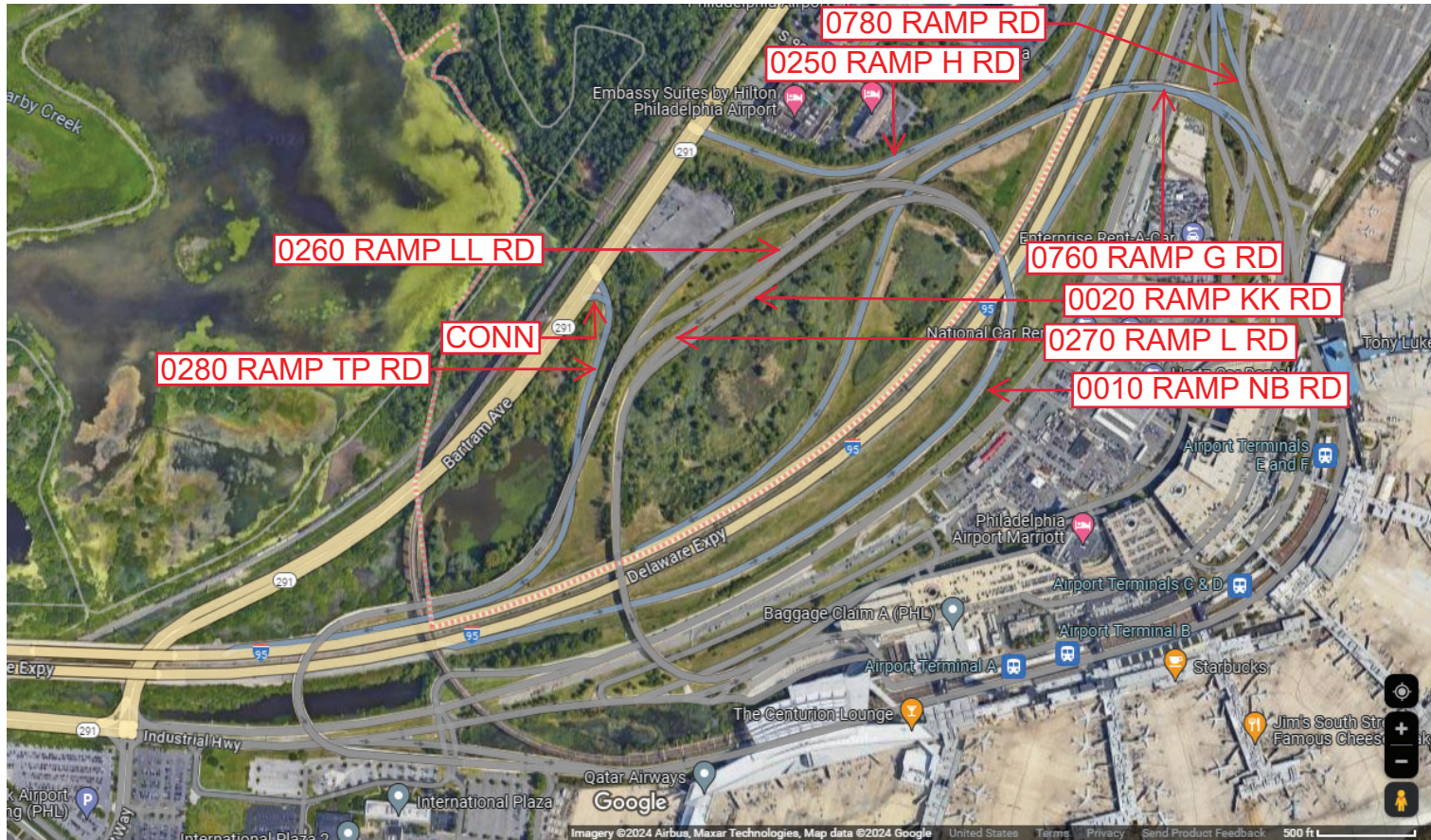
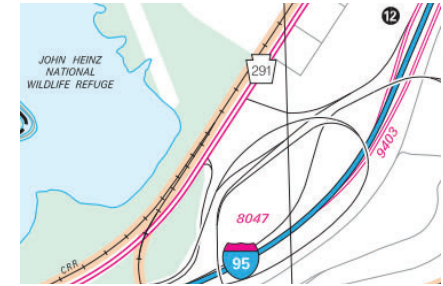
Ramp Segment Number and Ramp Segment Length Information:

Segment	Length	Segment	Length	Segment	Length	Segment	Length
0010	5622	0280	1743				
0020	3890	0760	3632				
0250	2523	0780	0842				
0260	5914						
0270	0567						

Primary Route Interchange Exit Number: 12A

Secondary Route Interchange Exit Number: 12B

PennDOT Type 10 Map View:



Last Date Modified: Jul 8, 2024

County: 67

# RMS Interchange Information

Print Form

Interchange Number: 8049

Bureau of Maintenance & Operations  
Asset Management Division



Interchange Name: ISLAND AVE & I-95

Intersecting SR's: SR 9403, SR 9405, I-95 Collector Rd & PA 291 Island/

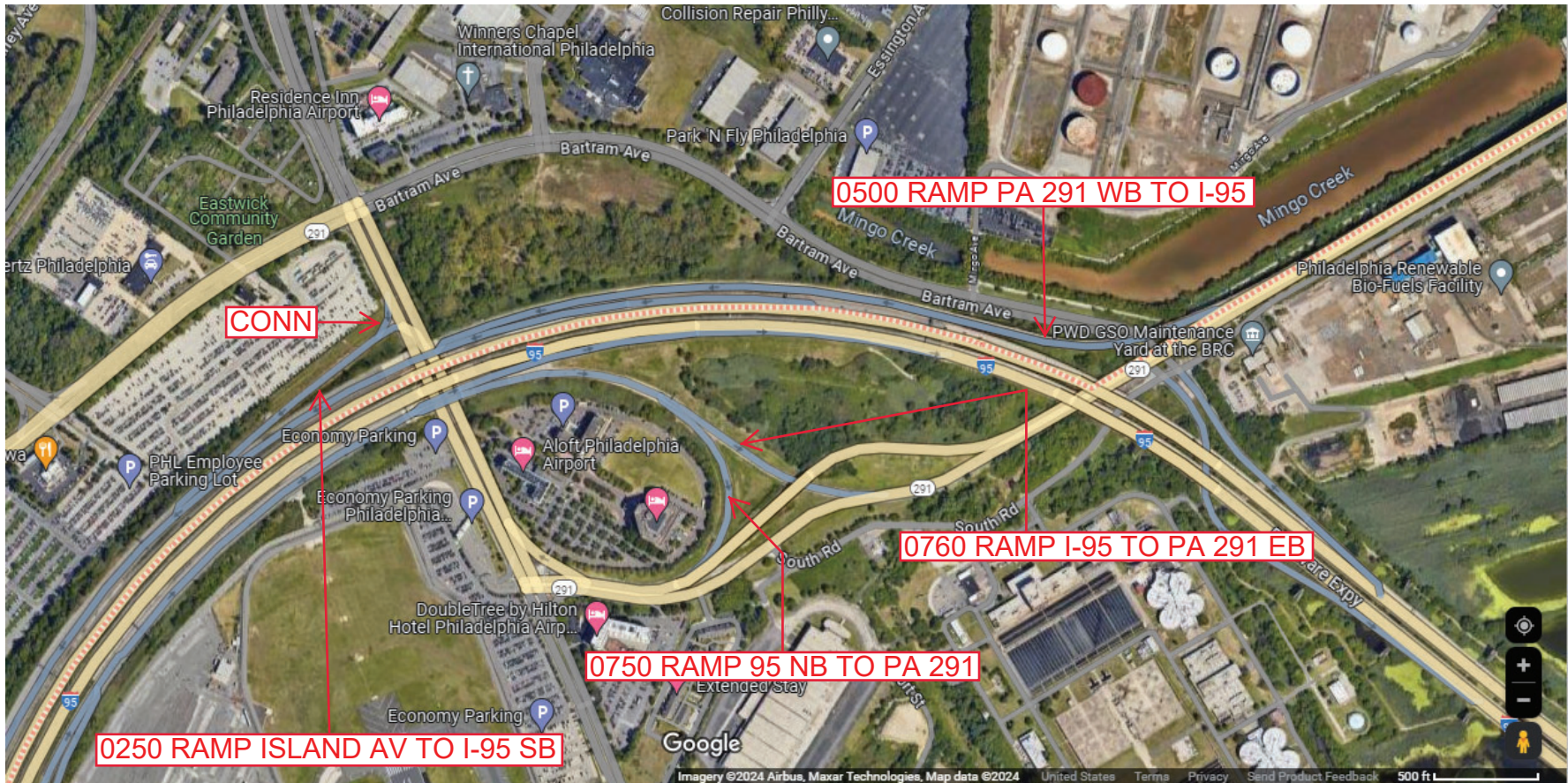
Ramp Segment Number and Ramp Segment Length Information:

Segment	Length	Segment	Length	Segment	Length	Segment	Length
0250	0905						
0500	2866						
0750	1635						
0760	0785						

Primary Route Interchange Exit Number: 13

Secondary Route Interchange Exit Number

PennDOT Type 10 Map View:



Last Date Modified: Jul 8, 2024

County: 67

# RMS Interchange Information

Bureau of Maintenance & Operations  
Asset Management Division

Print Form



Interchange Number: 8055

Interchange Name: WISSAHICKON PARK

Intersecting SR's: SR 3007 Kelly Dr & SR 309 Ridge Av

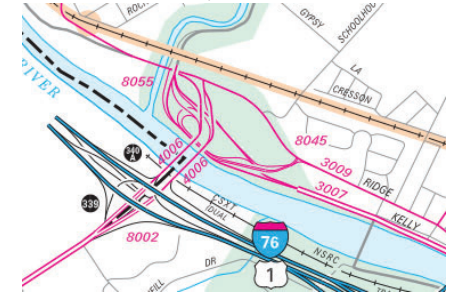
Ramp Segment Number and Ramp Segment Length Information:

Segment	Length	Segment	Length	Segment	Length	Segment	Length
0250	0575						
0500	0500						

Primary Route Interchange Exit Number

Secondary Route Interchange Exit Number

PennDOT Type 10 Map View:



Last Date Modified:

Jul 9, 2024

County: 67

# RMS Interchange Information

Bureau of Maintenance & Operations  
Asset Management Division

Print Form



Interchange Number: 8057

Interchange Name: TWENTYSECOND STREET EXIT

Intersecting SR's: I-676 Vine St & SR 3007 Art Museum Cr

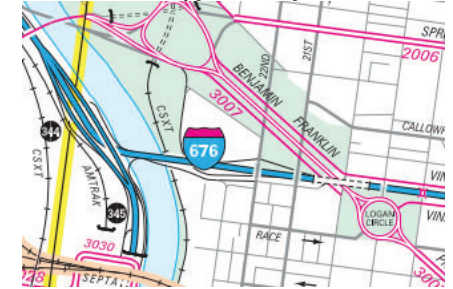
Ramp Segment Number and Ramp Segment Length Information:

Segment	Length	Segment	Length	Segment	Length	Segment	Length
0010	0909						
0250	0271						
0260	1612						
0500	0340						

Primary Route  
Interchange Exit  
Number

Secondary Route  
Interchange Exit  
Number

PennDOT Type 10 Map View:



Last Date Modified: Jul 9, 2024



County: 67

# RMS Interchange Information

Print Form

Interchange Number: 8059

Bureau of Maintenance & Operations  
Asset Management Division



Interchange Name: I-676 & 15th STREET INT

Intersecting SR's: I-676 Vine St Ex, 2676 Vine St & SR 3020 Fifteenth St

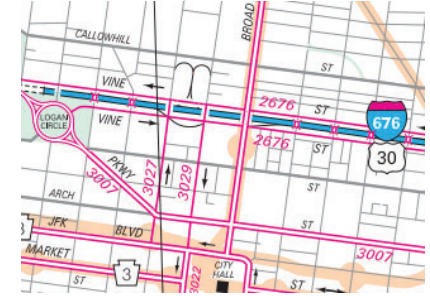
Ramp Segment Number and Ramp Segment Length Information:

Segment	Length	Segment	Length	Segment	Length	Segment	Length
0010	0470						
0250	0740						
0260	0797						
0750	0513						

Primary Route Interchange Exit Number

Secondary Route Interchange Exit Number

PennDOT Type 10 Map View:



Last Date Modified:

Jul 9, 2024

County: **67**

# RMS Interchange Information

Print Form

Interchange Number: **8061**

Bureau of Maintenance & Operations  
Asset Management Division



Interchange Name: **I-676 & 7TH STREET INT**

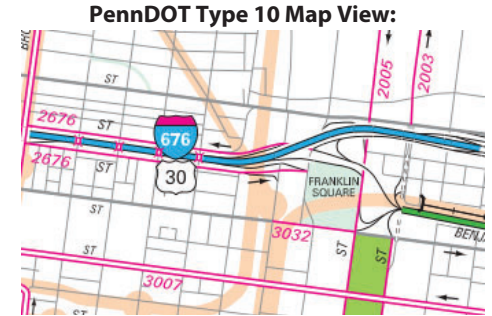
Intersecting SR's: **I-676 Vine St Ex, SR 2005 Sixth St & SR 2676 Vine St**

Ramp Segment Number and Ramp Segment Length Information:

Segment	Length	Segment	Length	Segment	Length	Segment	Length
<b>0010</b>	<b>0367</b>	<b>0760</b>	<b>0915</b>				
<b>0020</b>	<b>0861</b>						
<b>0250</b>	<b>0398</b>						
<b>0500</b>	<b>0507</b>						
<b>0750</b>	<b>0638</b>						

Primary Route Interchange Exit Number

Secondary Route Interchange Exit Number



Last Date Modified: **Jul 10, 2024**

County: 67

# RMS Interchange Information

Print Form

Bureau of Maintenance & Operations  
Asset Management Division



Interchange Number: 9153

Interchange Name: STENTON AVE & BETHLEHEM PK

Intersecting SR's: SR 3003 Stenton Av & SR 4007 Bethlehem Pk

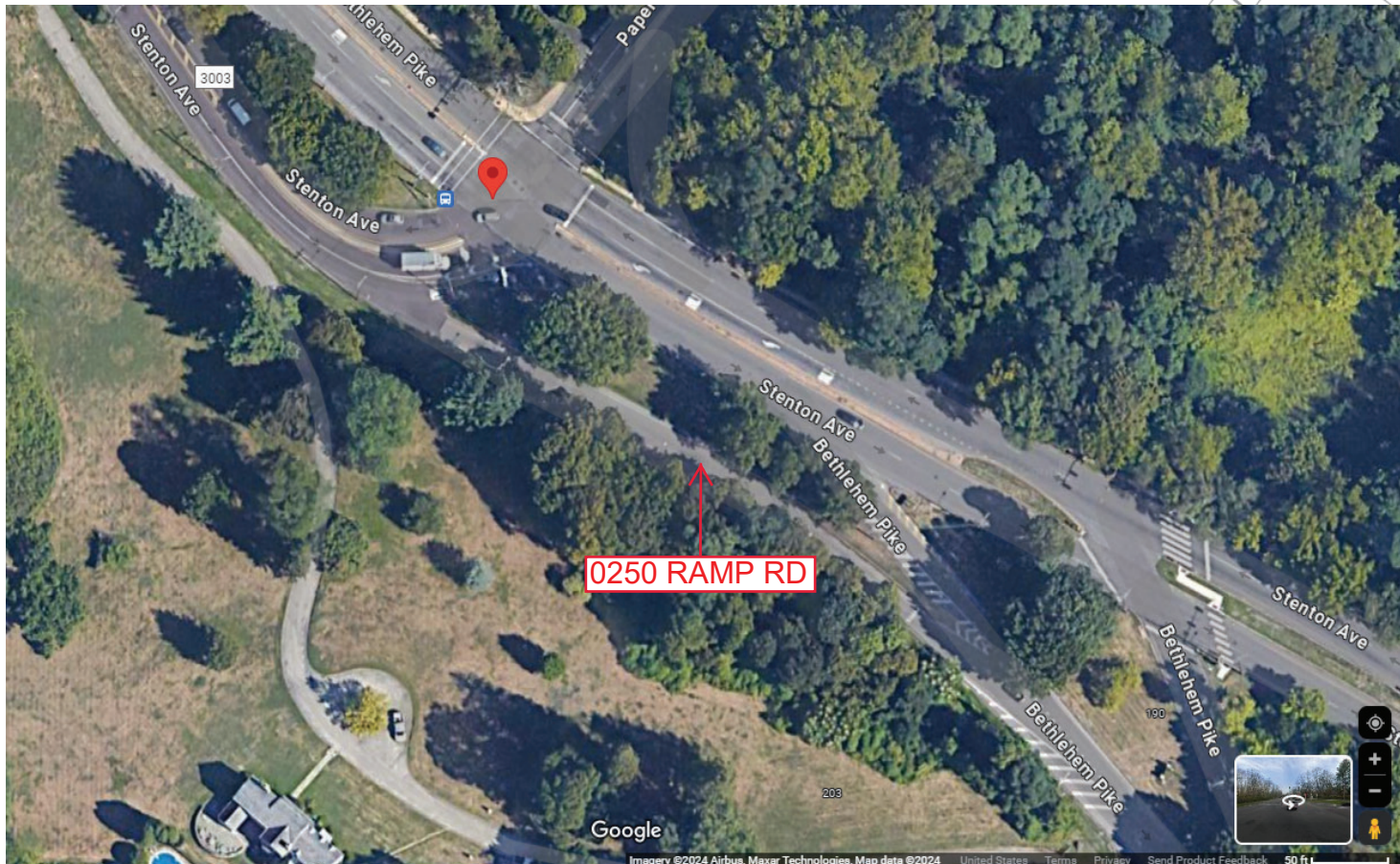
Ramp Segment Number and Ramp Segment Length Information:

Segment	Length	Segment	Length	Segment	Length	Segment	Length
0010	0380						

Primary Route  
Interchange Exit  
Number

Secondary Route  
Interchange Exit  
Number

PennDOT Type 10 Map View:



Last Date Modified: Jul 10, 2024

County: 67

# RMS Interchange Information

Print Form

Interchange Number: 9401

Bureau of Maintenance & Operations  
Asset Management Division



Interchange Name: KEYSTONE STREET & TACONY PALMYRA BRIDGE

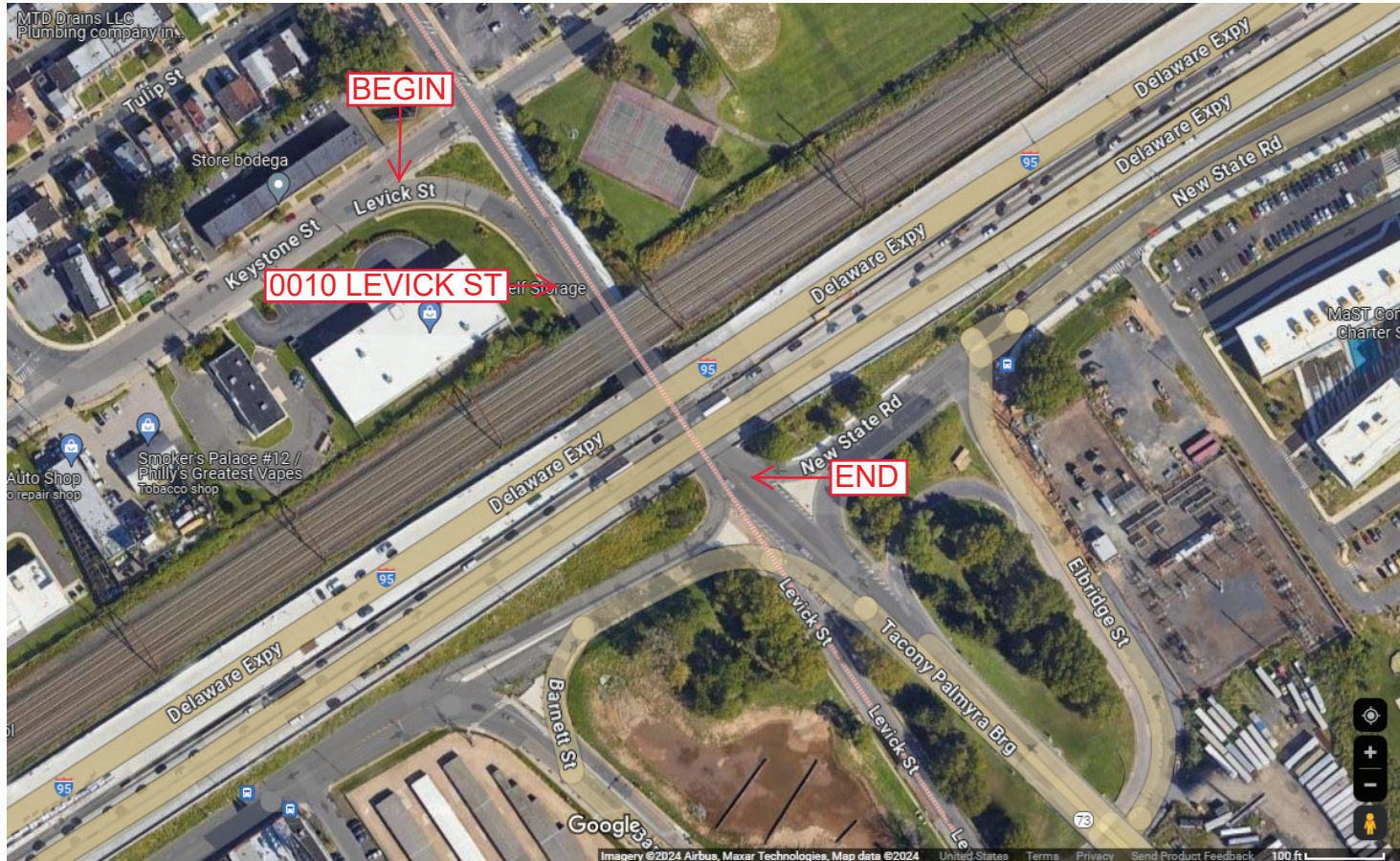
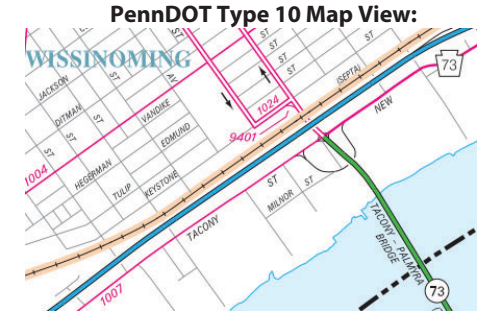
Intersecting SR's: SR 1024 Keystone St & SR 1007 Tacony St

Ramp Segment Number and Ramp Segment Length Information:

Segment	Length	Segment	Length	Segment	Length	Segment	Length
0010	0775						

Primary Route  
Interchange Exit  
Number

Secondary Route  
Interchange Exit  
Number



Last Date Modified:

Jul 10, 2024

County: 67

# RMS Interchange Information

Print Form

Bureau of Maintenance & Operations  
Asset Management Division



Interchange Number: 9403

Interchange Name: I-95 COLLECTOR ROAD

Intersecting SR's: I-95 Delaware Ex, SR 8047 & SR 8049

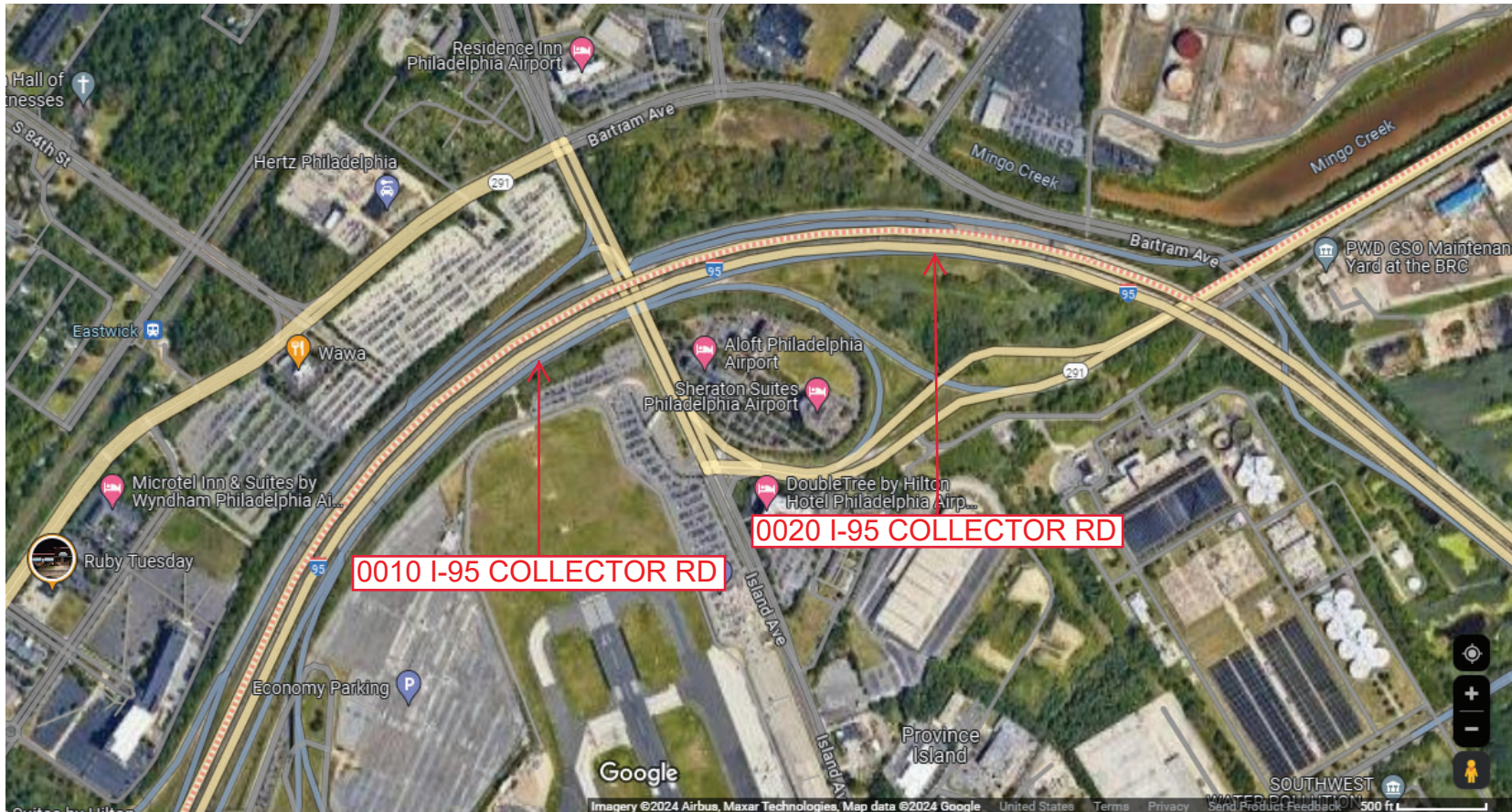
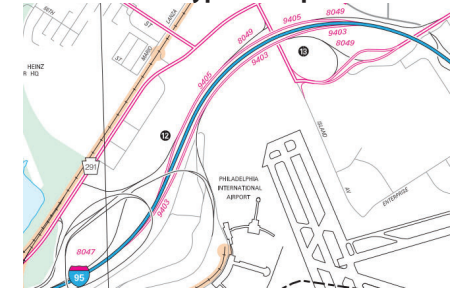
Ramp Segment Number and Ramp Segment Length Information:

Segment	Length	Segment	Length	Segment	Length	Segment	Length
0010	3311						
0020	3600						

Primary Route  
Interchange Exit  
Number

Secondary Route  
Interchange Exit  
Number

PennDOT Type 10 Map View:



Last Date Modified:

Jul 10, 2024

County: 67

# RMS Interchange Information

Print Form

Interchange Number: 9405

Bureau of Maintenance & Operations  
Asset Management Division



Interchange Name: I-95 COLLECTOR ROAD

Intersecting SR's: I-95 Delaware Ex, SR 8047 & SR 8049

Ramp Segment Number and Ramp Segment Length Information:

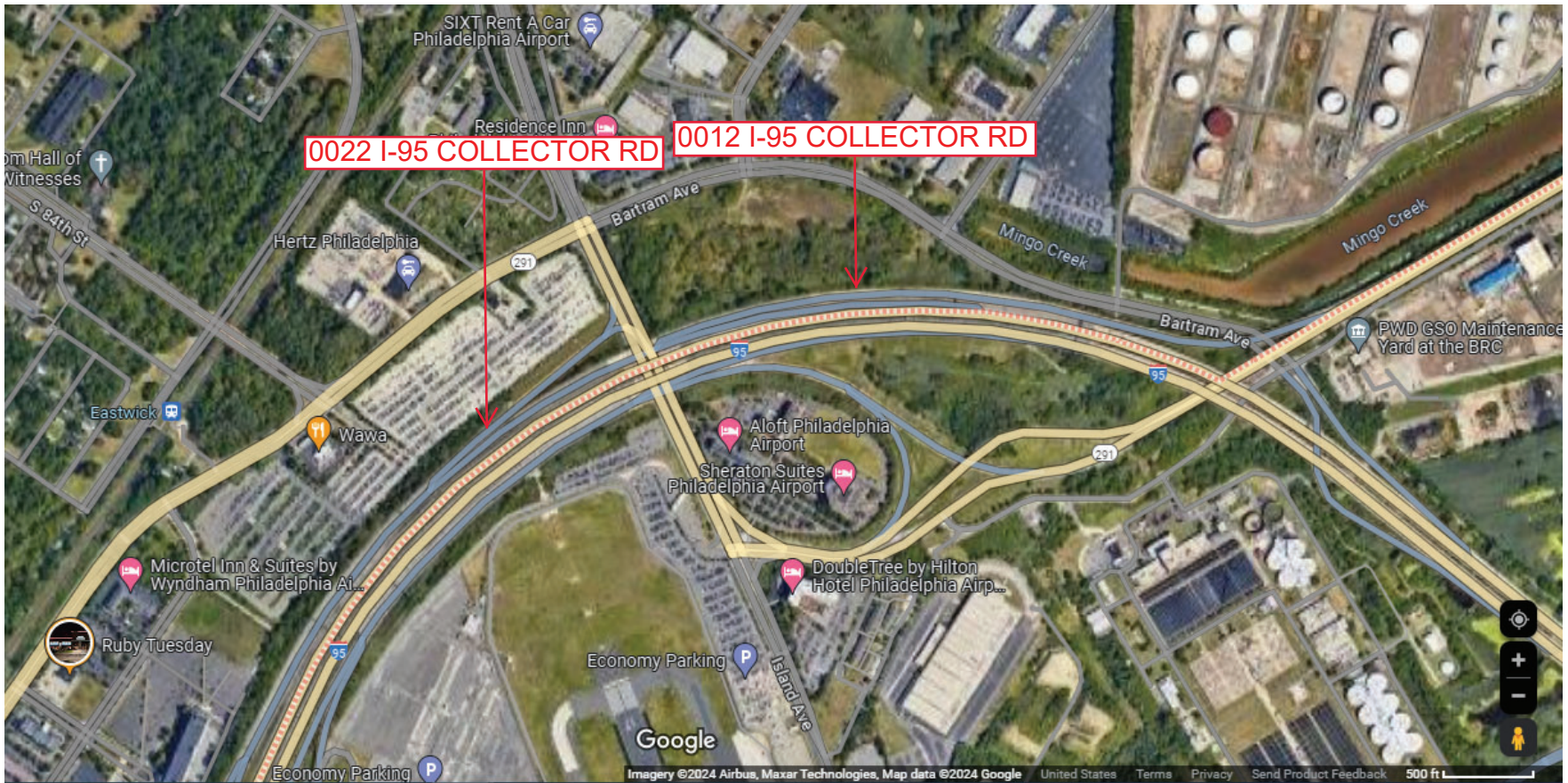
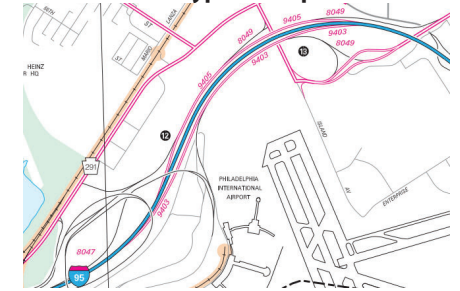
Segment	Length	Segment	Length	Segment	Length	Segment	Length
0012	3500						
0022	2909						

Primary Route  
Interchange Exit  
Number

Secondary Route  
Interchange Exit  
Number

12B

PennDOT Type 10 Map View:



Last Date Modified:

Jul 10, 2024

County: 67

# RMS Interchange Information

Print Form

Interchange Number: 9407

Bureau of Maintenance & Operations  
Asset Management Division



Interchange Name: ROOSEVELT BL & ROOSEVELT EX

Intersecting SR's: US 1, US 13 & SR 6001 Roosevelt Bl

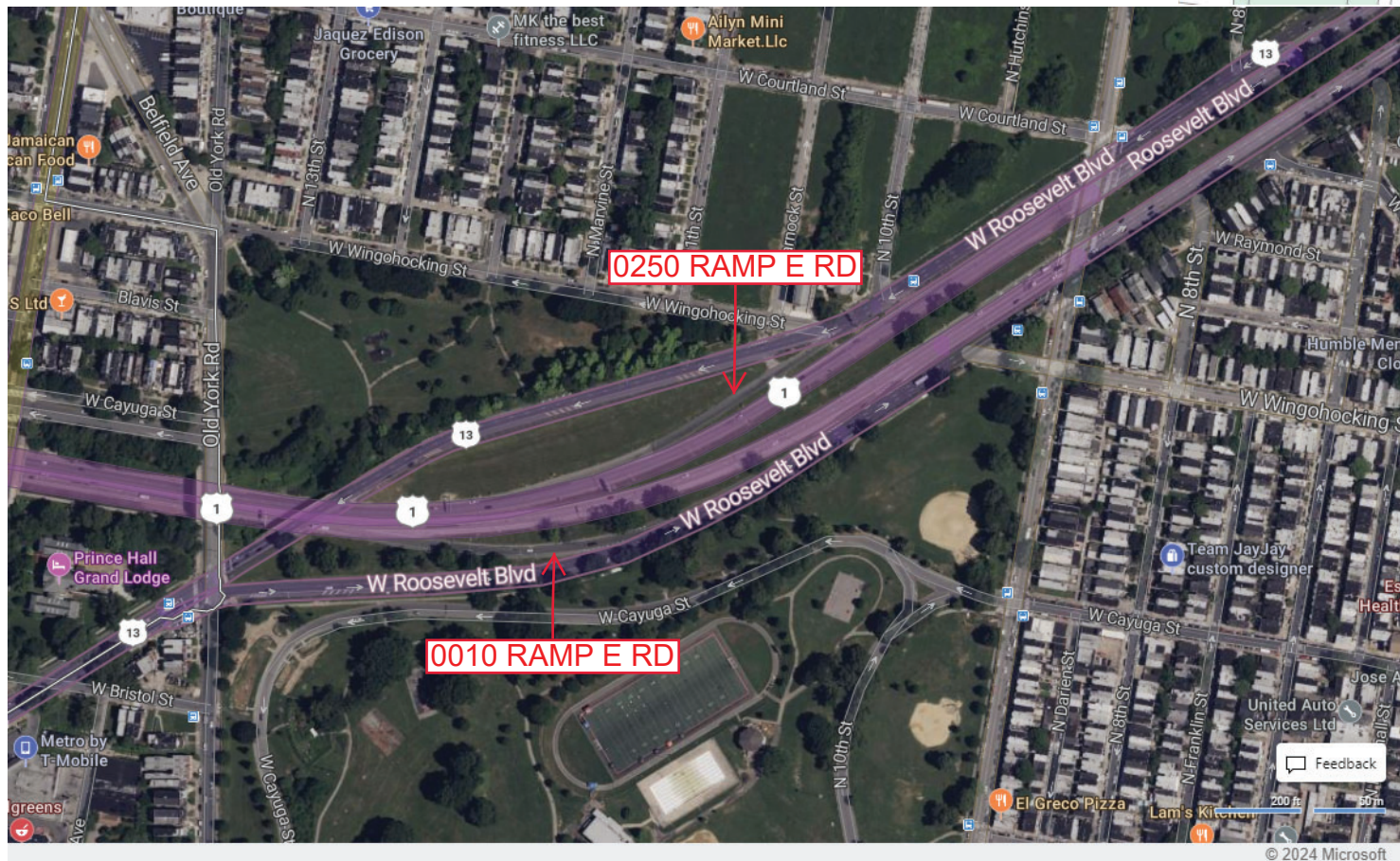
Ramp Segment Number and Ramp Segment Length Information:

Segment	Length	Segment	Length	Segment	Length	Segment	Length
0010	0345						
0250	0450						

Primary Route Interchange Exit Number

Secondary Route Interchange Exit Number

PennDOT Type 10 Map View:



Last Date Modified: Jul 12, 2024

County: 67

# RMS Interchange Information

Bureau of Maintenance & Operations  
Asset Management Division

Print Form



Interchange Number: 9409

Interchange Name: ROOSEVELT BLVD INT

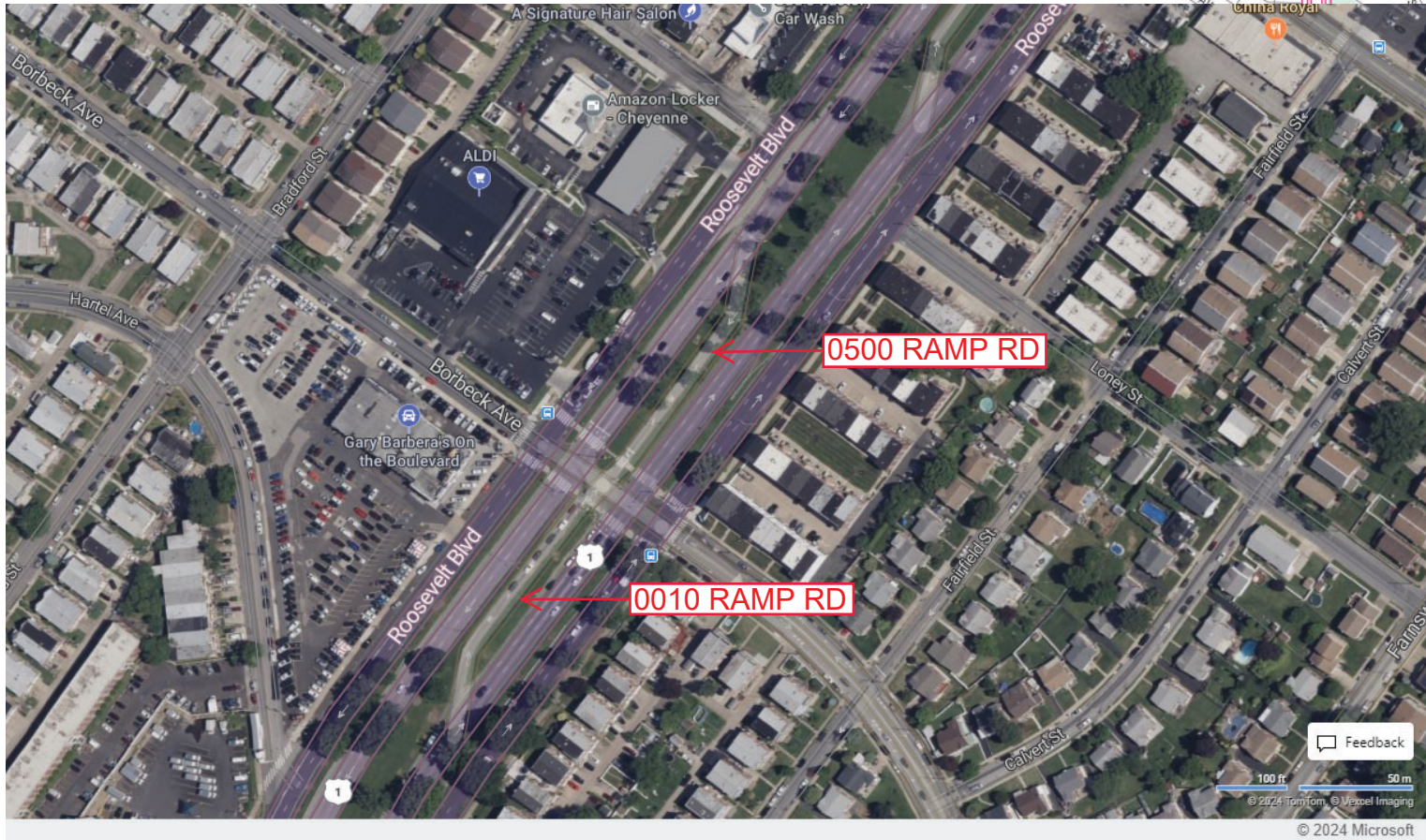
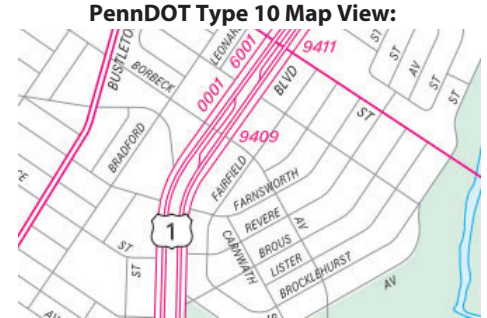
Intersecting SR's: US 1 Roosevelt BL & Borbeck Av/Ryan Av

Ramp Segment Number and Ramp Segment Length Information:

Segment	Length	Segment	Length	Segment	Length	Segment	Length
0010	0400						
0500	0400						

Primary Route Interchange Exit Number

Secondary Route Interchange Exit Number



Last Date Modified: Jul 12, 2024



County: 67

# RMS Interchange Information

Bureau of Maintenance & Operations  
Asset Management Division

Print Form



Interchange Number: 9411

Interchange Name: ROOSEVELT BLVD INT

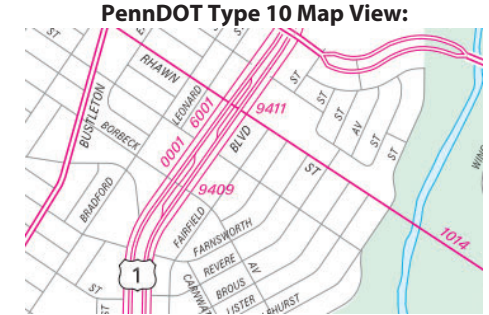
Intersecting SR's: US 1 Roosevelt Bl & SR 1014 Rhawn St

Ramp Segment Number and Ramp Segment Length Information:

Segment	Length	Segment	Length	Segment	Length	Segment	Length
0010	0400						
0500	0400						

Primary Route Interchange Exit Number

Secondary Route Interchange Exit Number



Last Date Modified: Jul 12, 2024