

County: 01

# RMS Interchange Information

Bureau of Maintenance & Operations  
Asset Management Division

Print Form



Interchange Number: 8001

Interchange Name: STEINWEHR AVE INT

Intersecting SR's: US 15 Blue-Gray Hw & SR 3001 Steinwehr Av

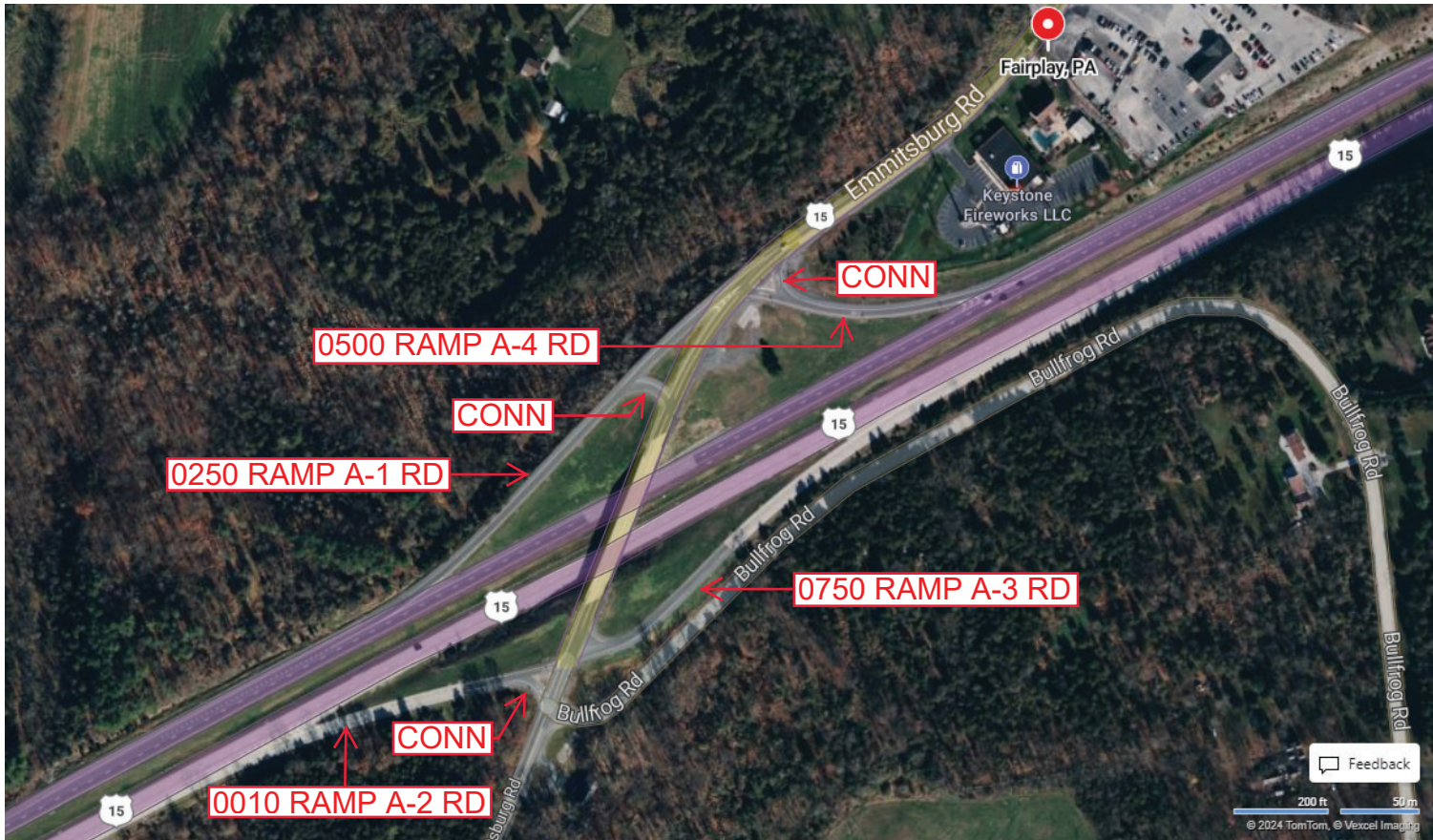
Ramp Segment Number and Ramp Segment Length Information:

Segment	Length	Segment	Length	Segment	Length	Segment	Length
0010	0539						
0250	0811						
0500	0449						
0750	0746						

Primary Route Interchange Exit Number

Secondary Route Interchange Exit Number

PennDOT Type 10 Map View:



Feedback  
200 ft 50 m  
© 2024 TomTom, © Vexcel Imaging  
© 2024 Microsoft

Last Date Modified:

Jul 12, 2024



County: 01

# RMS Interchange Information

Bureau of Maintenance & Operations  
Asset Management Division

Print Form



Interchange Number: 8003

Interchange Name: BALTIMORE PIKE INT

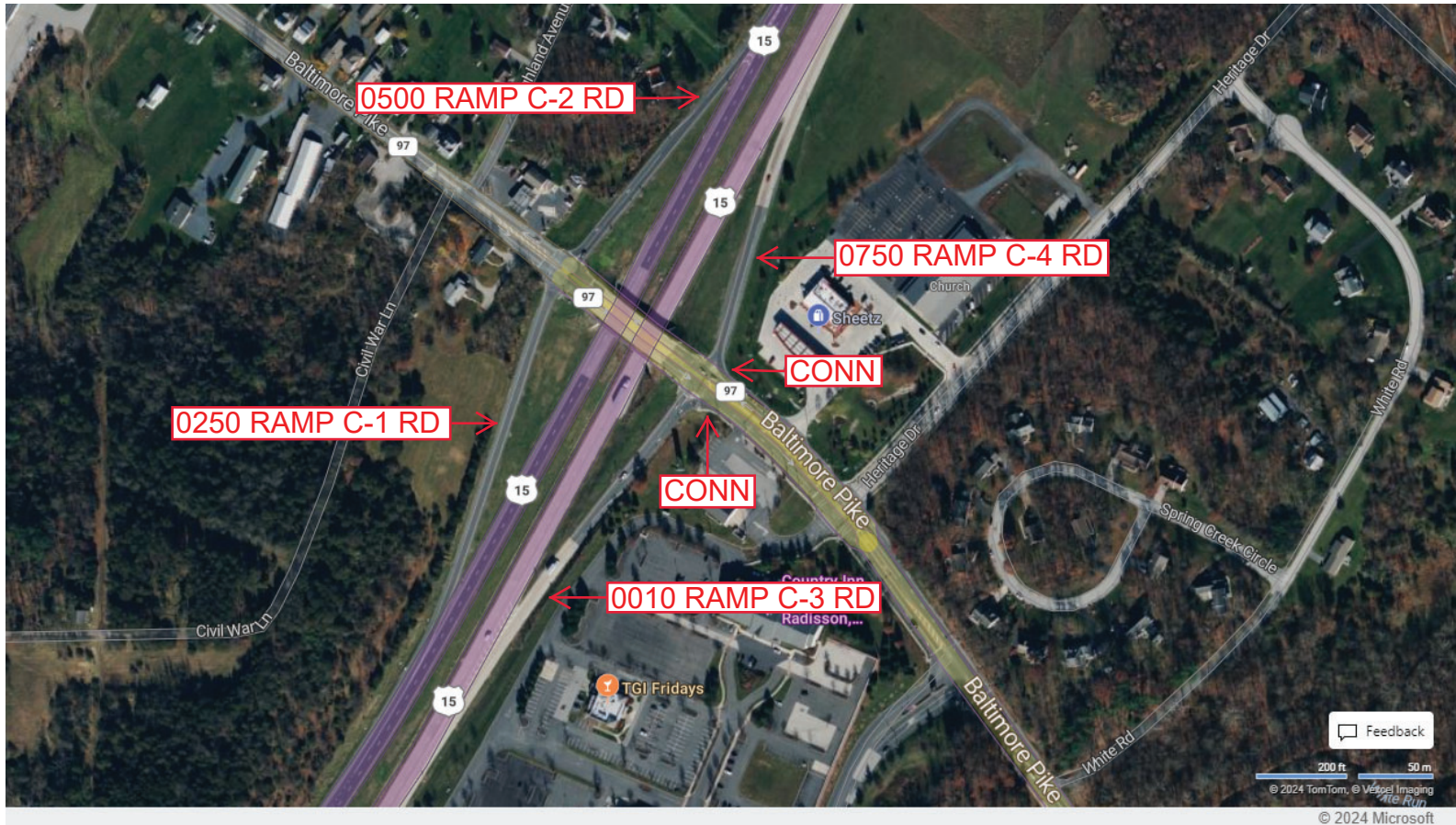
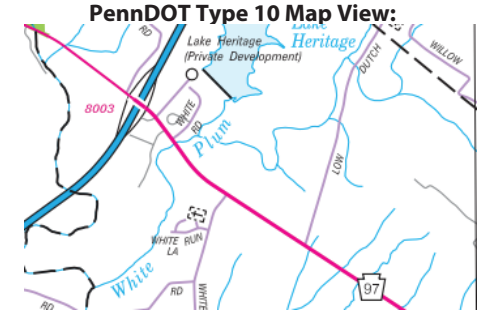
Intersecting SR's: US 15 Blue-Gray Hw, PA 97 & SR 2035 Baltimore Pk

Ramp Segment Number and Ramp Segment Length Information:

Segment	Length	Segment	Length	Segment	Length	Segment	Length
0010	0627						
0250	0745						
0500	0569						
0750	0584						

Primary Route Interchange Exit Number

Secondary Route Interchange Exit Number



Last Date Modified:

Jul 12, 2024



County: 01

# RMS Interchange Information

Print Form

Bureau of Maintenance & Operations  
Asset Management Division



Interchange Number: 8005

Interchange Name: YORK STREET INT

Intersecting SR's: US 15 Blue-gray Hw & US 30 York St

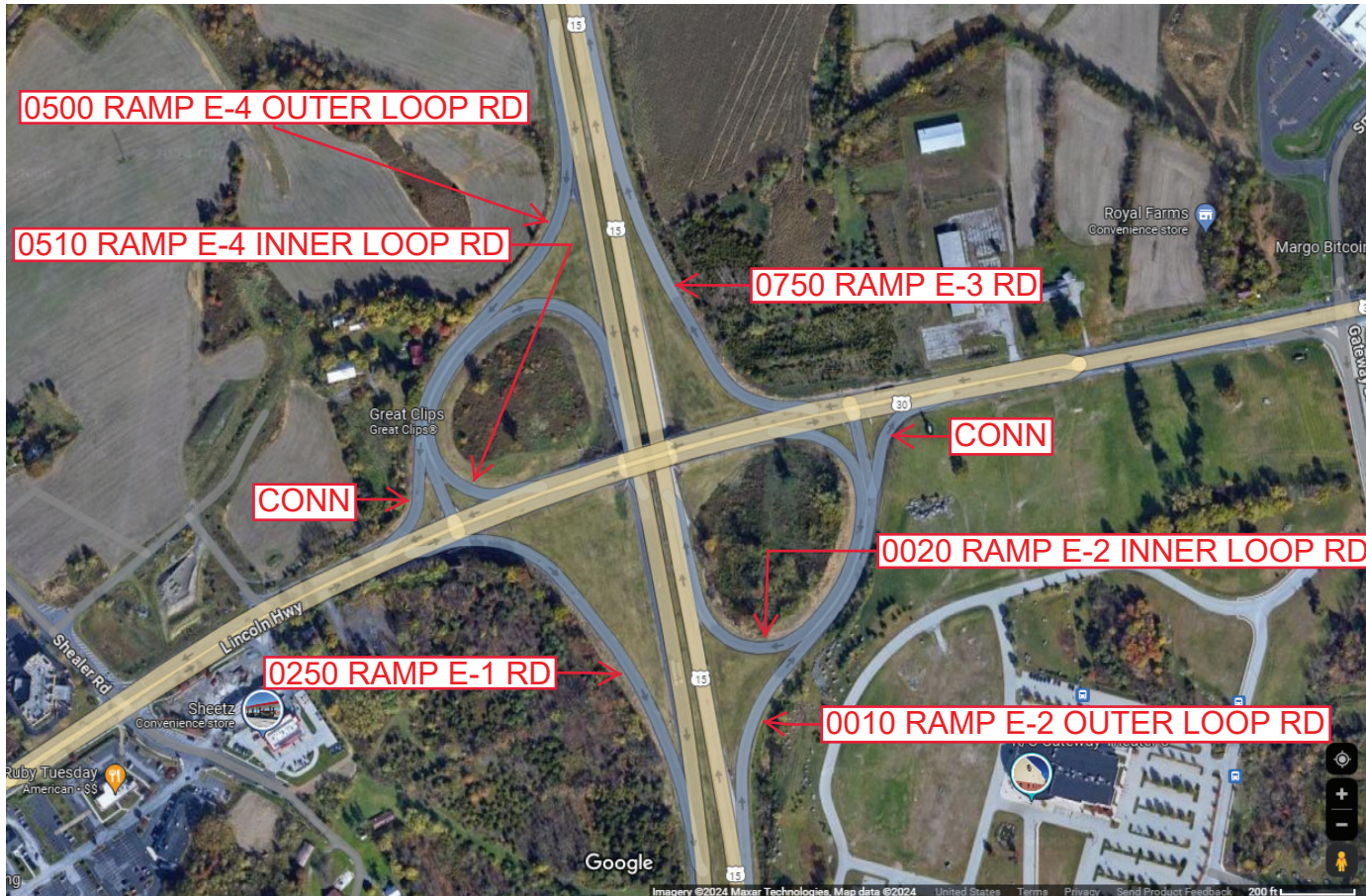
Ramp Segment Number and Ramp Segment Length Information:

Segment	Length	Segment	Length	Segment	Length	Segment	Length
0010	1184	0750	0791				
0020	0958						
0250	0893						
0500	1085						
0510	0956						

Primary Route Interchange Exit Number

Secondary Route Interchange Exit Number

PennDOT Type 10 Map View:



Last Date Modified: Jul 15, 2024



County: 01

# RMS Interchange Information

Print Form

Bureau of Maintenance & Operations  
Asset Management Division



Interchange Number: 8007

Interchange Name: HEIDELERSBURG EXIT INT

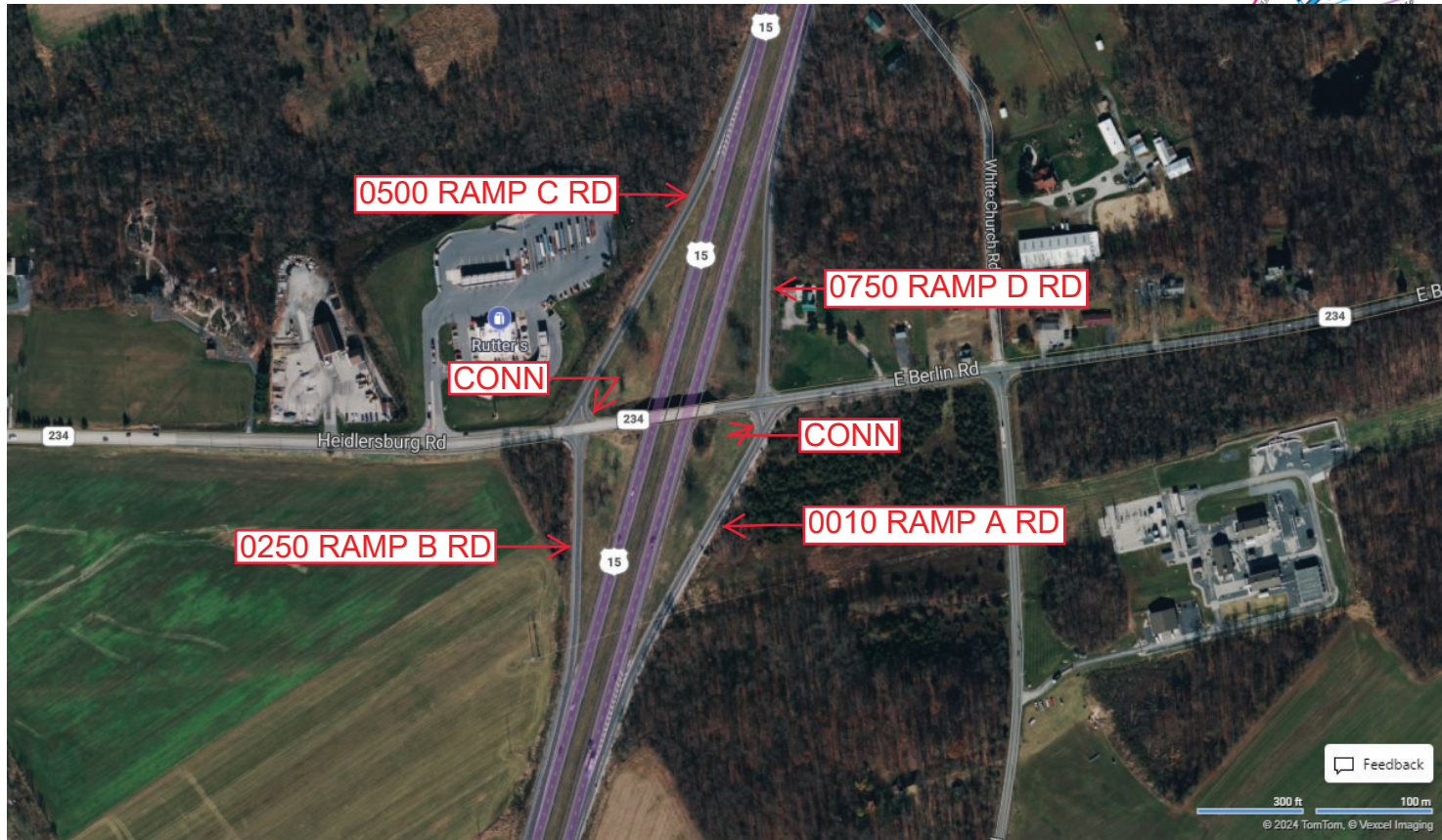
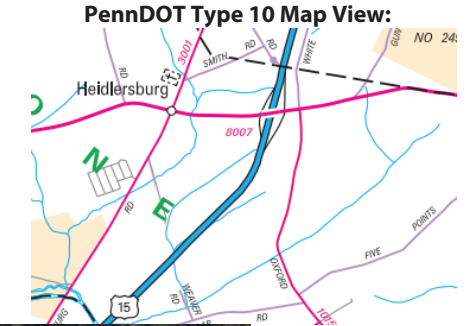
Intersecting SR's: US 15 Blue-Gray Hw & PA 234 Heidlersburg/East Berlin Rd

Ramp Segment Number and Ramp Segment Length Information:

Segment	Length	Segment	Length	Segment	Length	Segment	Length
0010	0862						
0250	0696						
0500	0857						
0750	0700						

Primary Route Interchange Exit Number

Secondary Route Interchange Exit Number



Feedback

300 ft 100 m  
© 2024 TomTom, © Vexcel Imaging

© 2024 Microsoft

Last Date Modified:

Jul 15, 2024

County: 01

# RMS Interchange Information

Bureau of Maintenance & Operations  
Asset Management Division

Print Form



Interchange Number: 8009

Interchange Name: HUNTERSTOWN ROAD INT

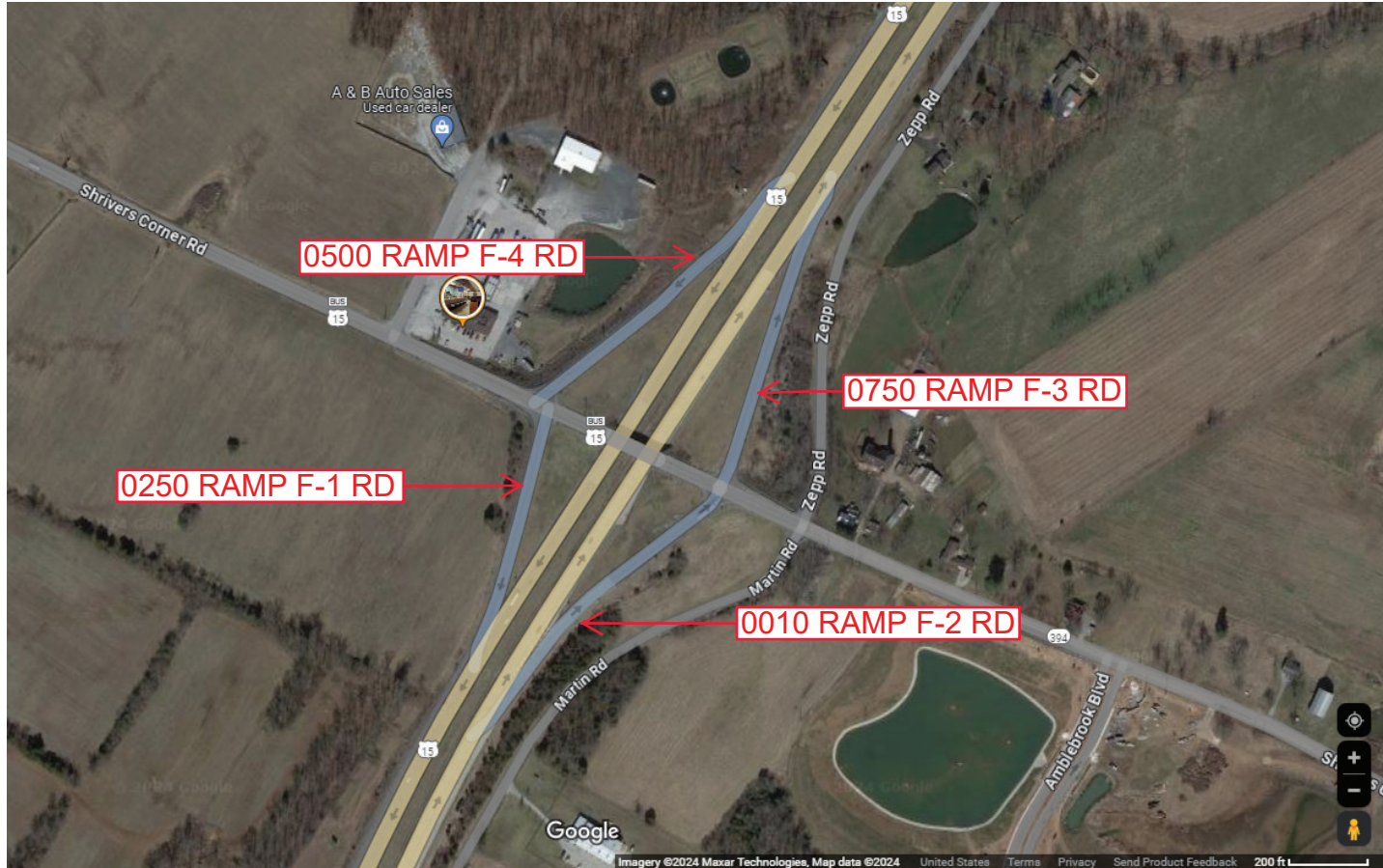
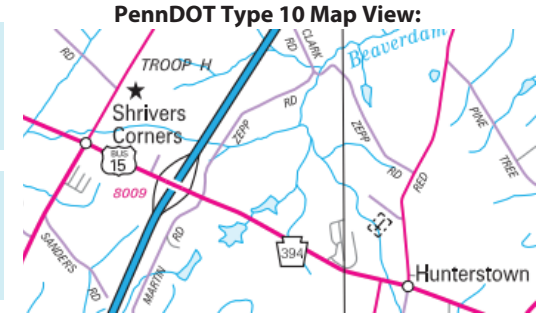
Intersecting SR's: US 15 Blue-Gray HW & PA 394 Shrivvers Corner Rd

Ramp Segment Number and Ramp Segment Length Information:

Segment	Length	Segment	Length	Segment	Length	Segment	Length
0010	0541						
0250	0537						
0500	0627						
0750	0629						

Primary Route Interchange Exit Number

Secondary Route Interchange Exit Number



Last Date Modified: Jul 15, 2024



County: 01

# RMS Interchange Information

Print Form

Interchange Number: 8011

Bureau of Maintenance & Operations  
Asset Management Division



Interchange Name: YORK SPRINGS INT

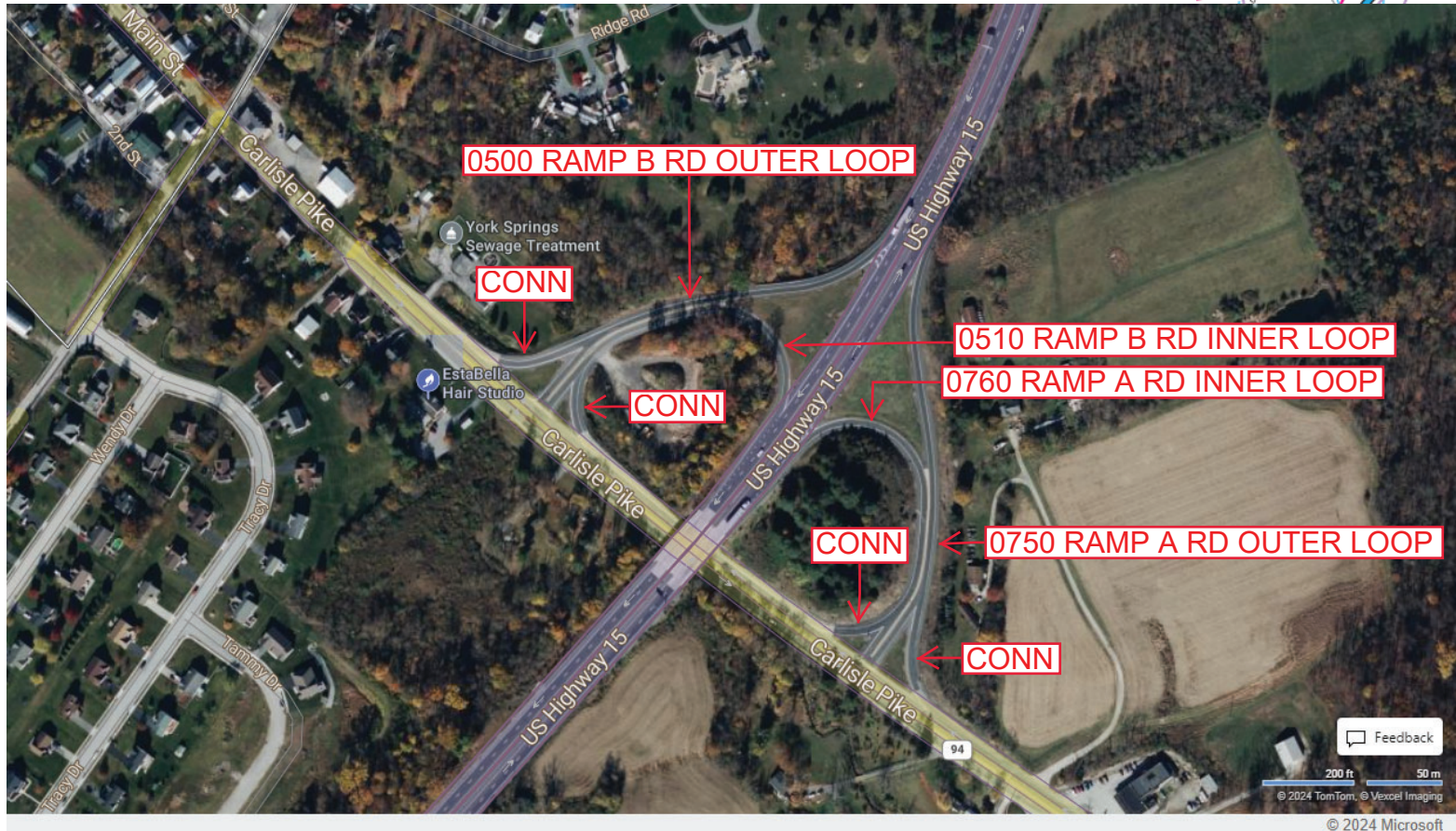
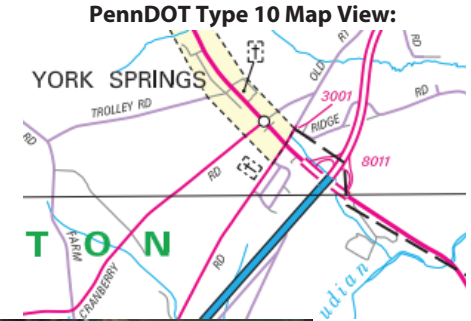
Intersecting SR's: US 15 Blue-Gray Hw & PA 94 Carlisle Pk

Ramp Segment Number and Ramp Segment Length Information:

Segment	Length	Segment	Length	Segment	Length	Segment	Length
0500	0830						
0510	0737						
0750	0900						
0760	0737						

Primary Route Interchange Exit Number

Secondary Route Interchange Exit Number



Last Date Modified: Jul 15, 2024



County: 01

# RMS Interchange Information

Bureau of Maintenance & Operations  
Asset Management Division

Print Form



Interchange Number: 8013

Interchange Name: HANOVER STREET INT

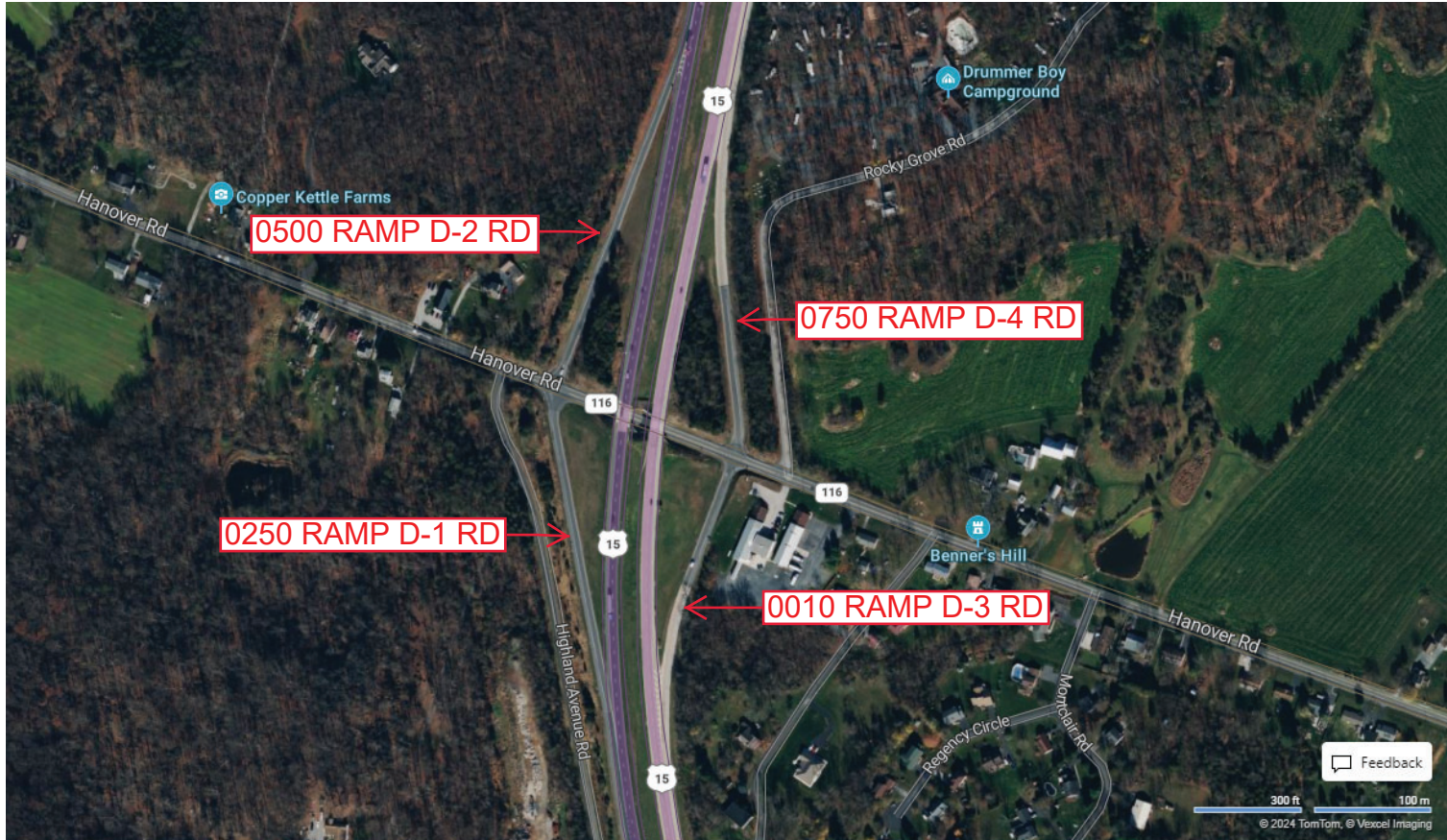
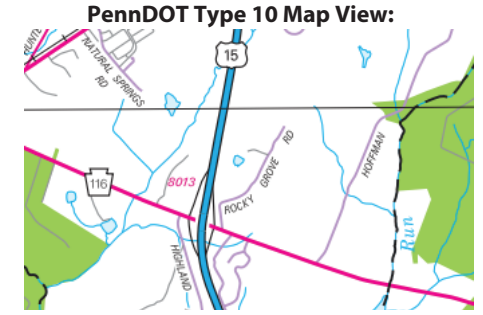
Intersecting SR's: US 15 Blue-gray Hw & PA 116 Hanover St

Ramp Segment Number and Ramp Segment Length Information:

Segment	Length	Segment	Length	Segment	Length	Segment	Length
0010	0613						
0250	0816						
0500	0922						
0750	0826						

Primary Route Interchange Exit Number

Secondary Route Interchange Exit Number



Last Date Modified: Jul 15, 2024



County: 01

# RMS Interchange Information

Bureau of Maintenance & Operations  
Asset Management Division

Print Form



Interchange Number: 8015

Interchange Name: TANEYTOWN ROAD INT

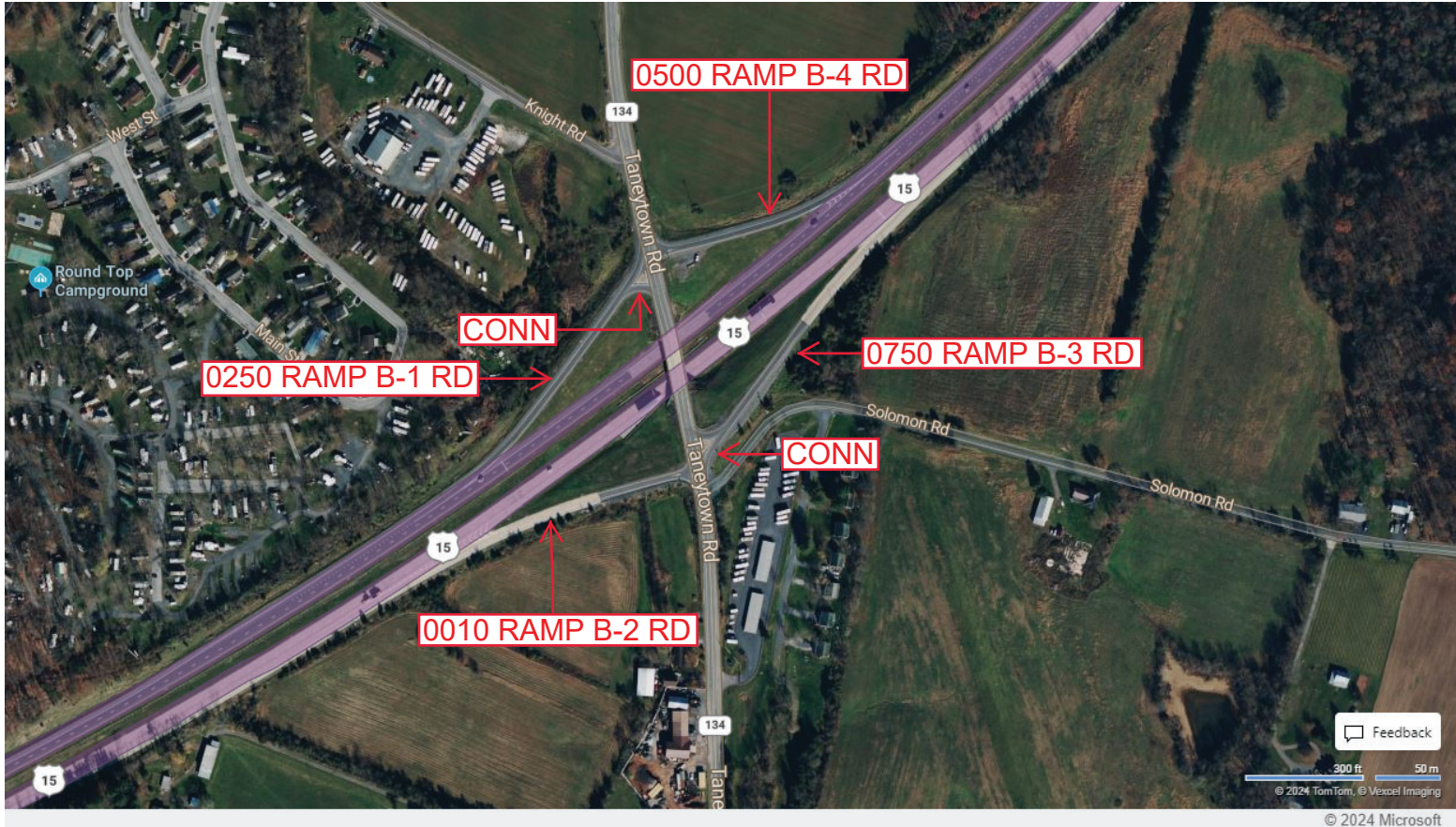
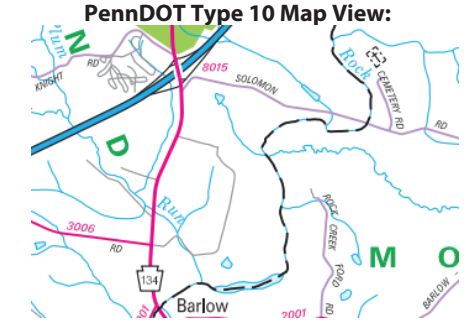
Intersecting SR's: US 15 Blue-Gray Hw & PA 134 Taneytown Rd

Ramp Segment Number and Ramp Segment Length Information:

Segment	Length	Segment	Length	Segment	Length	Segment	Length
0010	0538						
0250	0586						
0500	0452						
0750	0664						

Primary Route Interchange Exit Number

Secondary Route Interchange Exit Number



Last Date Modified:

Jul 12, 2024