

County: 21

RMS Interchange Information

Print Form

Bureau of Maintenance & Operations
Asset Management Division



Interchange Number: 8001

Interchange Name: ROSSMOYNE EXIT

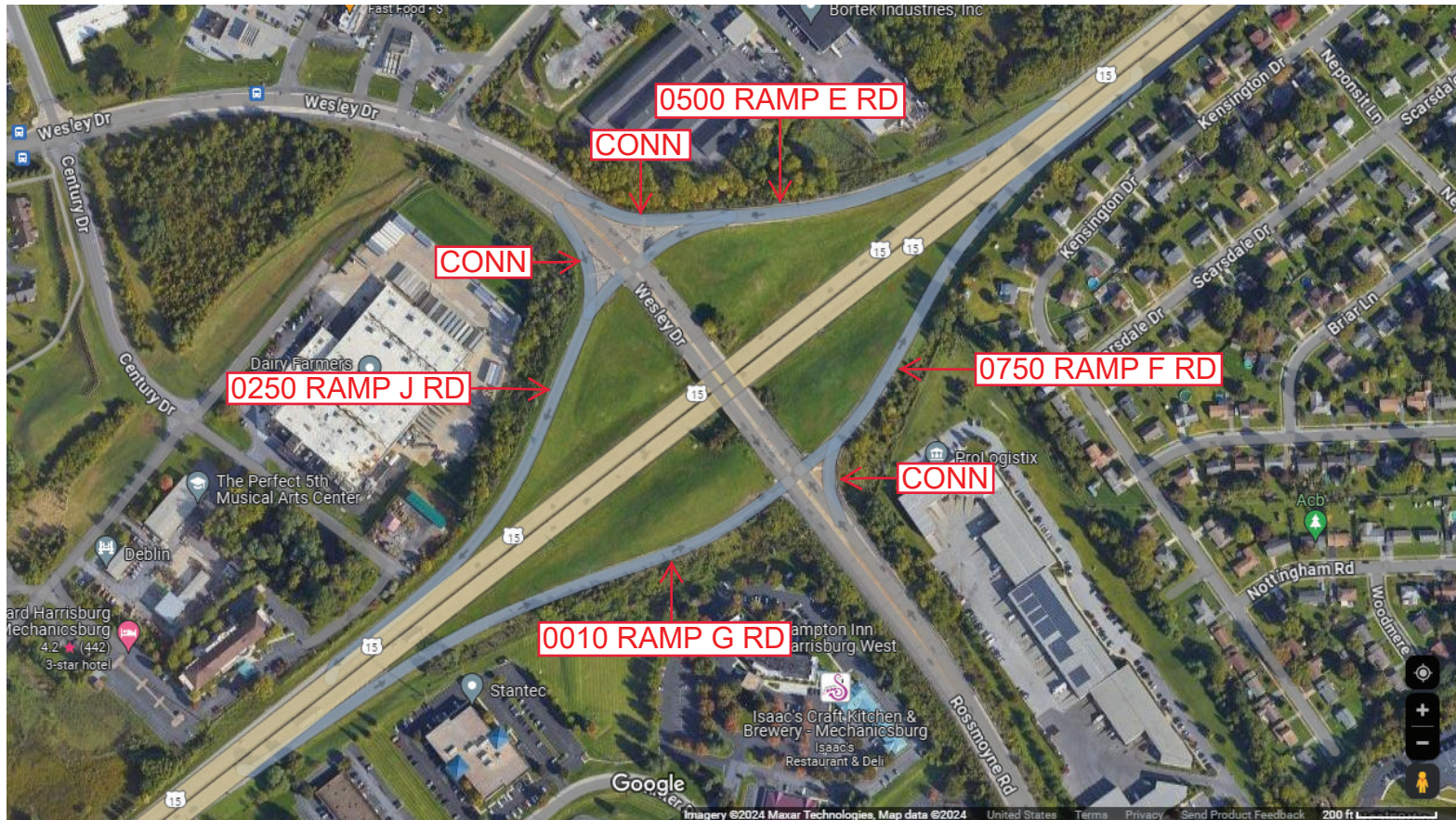
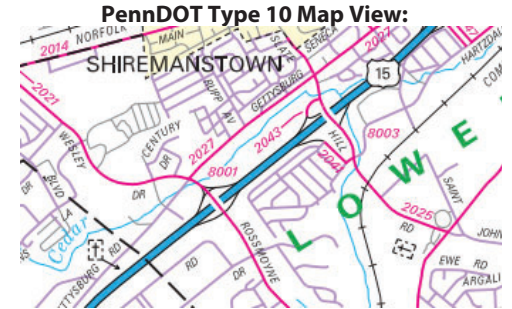
Intersecting SR's: US 15 Blue-Gray Hw & SR 2021 Rossmoyrn Rd/Wesley Dr

Ramp Segment Number and Ramp Segment Length Information:

Segment	Length	Segment	Length	Segment	Length	Segment	Length
0010	1175						
0250	0865						
0500	0906						
0750	0881						

Primary Route Interchange Exit Number

Secondary Route Interchange Exit Number



Last Date Modified: Jul 16, 2024

County: 21

RMS Interchange Information

Bureau of Maintenance & Operations
Asset Management Division

Print Form



Interchange Number: 8003

Interchange Name: SLANT HILL ROAD EXIT

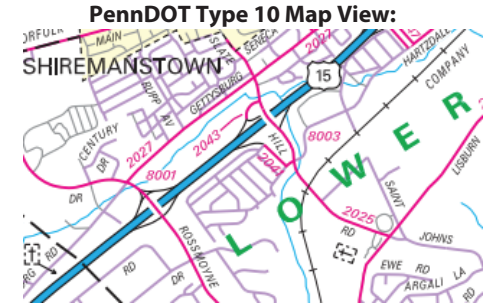
Intersecting SR's: US 15 & SR 2025 Slate Hill Rd SR 2043

Ramp Segment Number and Ramp Segment Length Information:

Segment	Length	Segment	Length	Segment	Length	Segment	Length
0010	0489						
0250	0267						
0500	0145						
0750	0672						

Primary Route
Interchange Exit
Number

Secondary Route
Interchange Exit
Number



Last Date Modified:

Jul 16, 2024

County: 21

RMS Interchange Information

Print Form

Interchange Number: 8004

Bureau of Maintenance & Operations
Asset Management Division



Interchange Name: THIRTYSECOND STREET INT

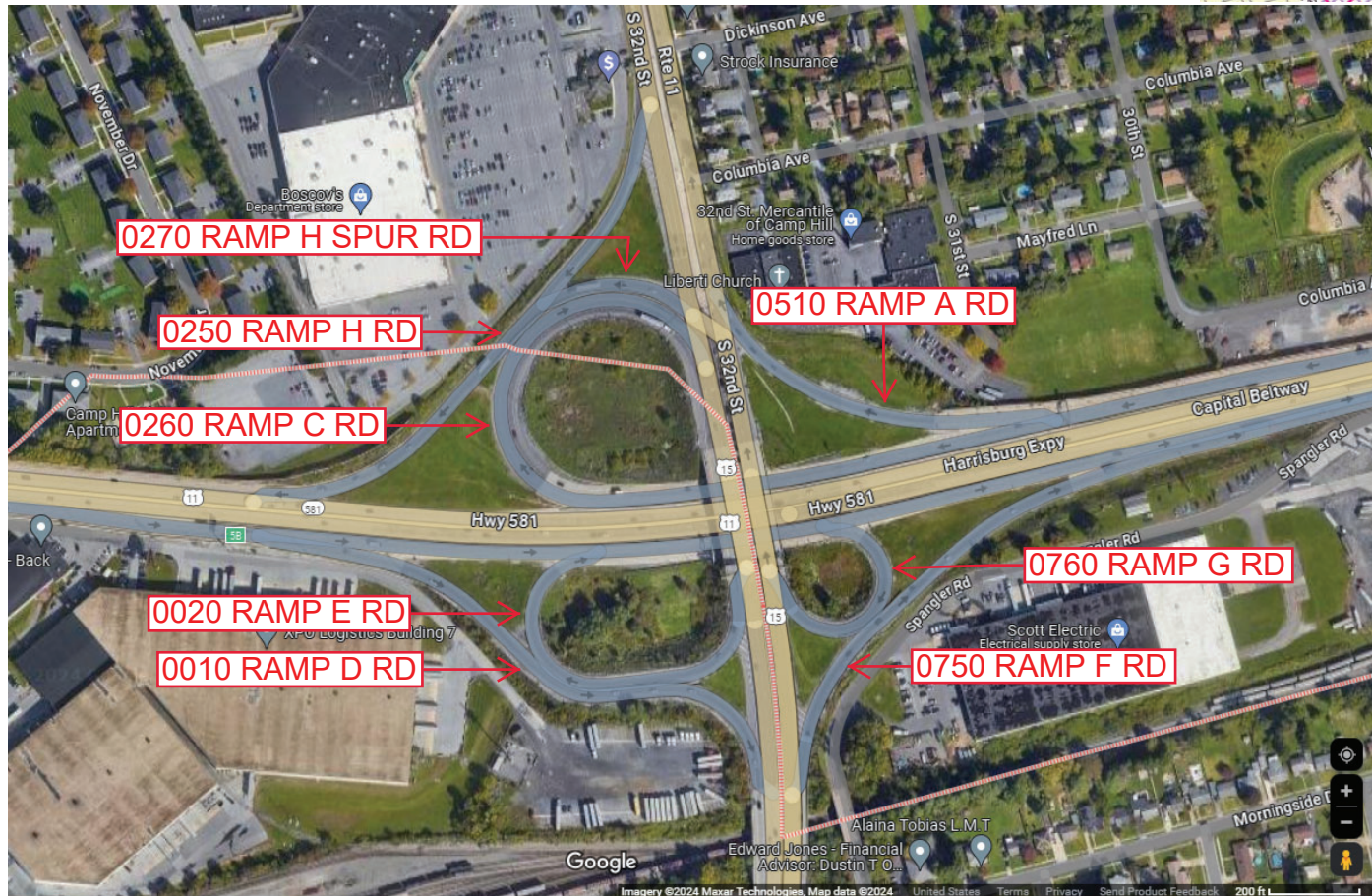
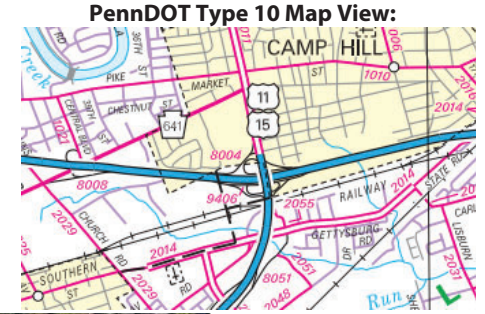
Intersecting SR's: US 11, US 15, PA 581 American Ex-Pow Men Hw & SR9406

Ramp Segment Number and Ramp Segment Length Information:

Segment	Length	Segment	Length	Segment	Length	Segment	Length
0010	0890	0510	1203				
0020	0693	0750	0784				
0250	1026	0760	0404				
0260	1564						
0270	0233						

Primary Route Interchange Exit Number: 5A

Secondary Route Interchange Exit Number: 5B



Last Date Modified: Jul 17, 2024

County: 21

RMS Interchange Information

Bureau of Maintenance & Operations
Asset Management Division

Print Form



Interchange Number: 8005

Interchange Name: BOWMANSDALE EXIT

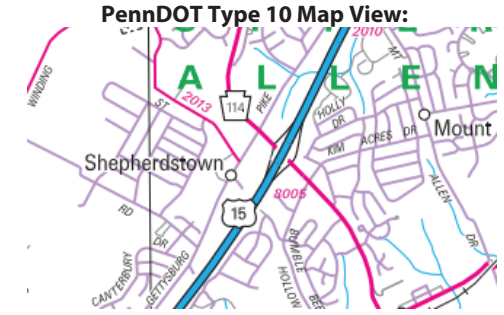
Intersecting SR's: US 15 & PA 114 Market St

Ramp Segment Number and Ramp Segment Length Information:

Segment	Length	Segment	Length	Segment	Length	Segment	Length
0010	0931						
0250	1045						
0500	0844						
0750	0992						

Primary Route Interchange Exit Number

Secondary Route Interchange Exit Number



Last Date Modified:

Jul 26, 2024

County: 21

RMS Interchange Information

Bureau of Maintenance & Operations
Asset Management Division

Print Form



Interchange Number: 8008

Interchange Name: TRINDLE ROAD EXIT

Intersecting SR's: PA 581, PA 641 Trindle Rd & SR 1021 Central Bl

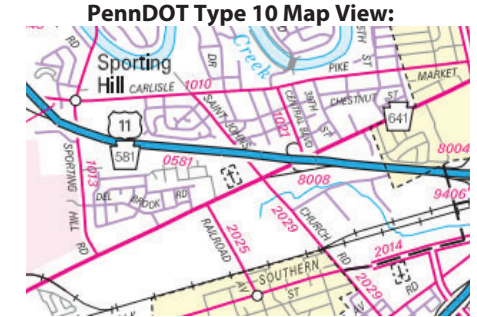
Ramp Segment Number and Ramp Segment Length Information:

Segment	Length	Segment	Length	Segment	Length	Segment	Length
0250	0718						
0750	1017						

Primary Route Interchange Exit Number

4

Secondary Route Interchange Exit Number



Consumer Health Privacy

Feedback

100 ft 30 m
© 2024 Microsoft

Last Date Modified:

Jul 26, 2024

County: 21

RMS Interchange Information

Print Form

Interchange Number: 8011

Bureau of Maintenance & Operations
Asset Management Division



Interchange Name: NEW CUMBERLAND INT

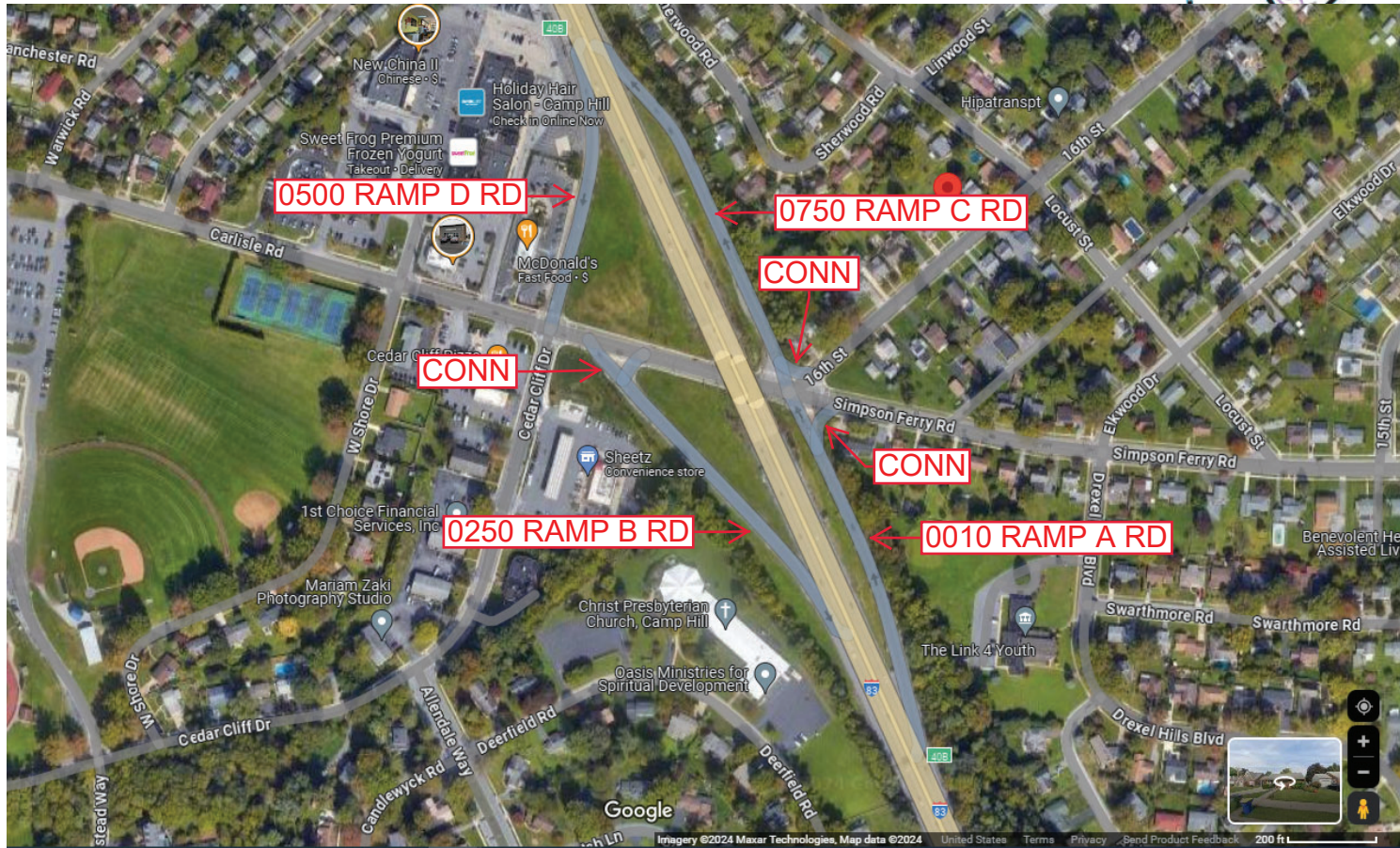
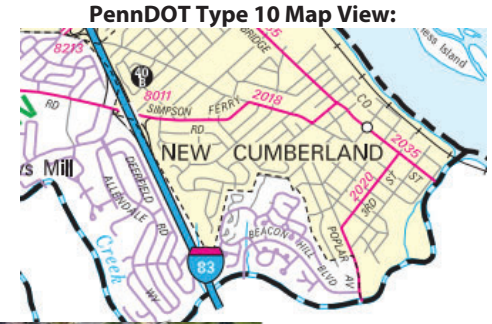
Intersecting SR's: I-83 & SR 2018 Simpson Ferry Rd/Carlisle Rd

Ramp Segment Number and Ramp Segment Length Information:

Segment	Length	Segment	Length	Segment	Length	Segment	Length
0010	0698						
0250	0655						
0500	0491						
0750	0775						

Primary Route Interchange Exit Number: 40B

Secondary Route Interchange Exit Number



Last Date Modified: Jul 26, 2024

County: 21

RMS Interchange Information

Bureau of Maintenance & Operations
Asset Management Division

Print Form



Interchange Number: 8015

Interchange Name: KING STREET INT

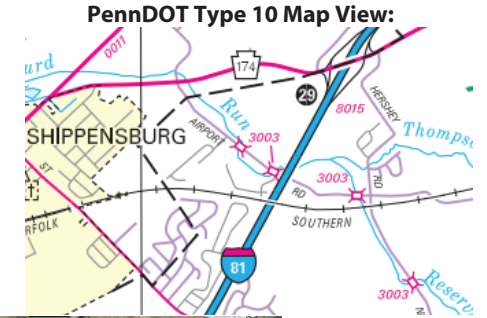
Intersecting SR's: I-81 American Legion Mem Hw & PA 174 Walnut Bottom Rd

Ramp Segment Number and Ramp Segment Length Information:

Segment	Length	Segment	Length	Segment	Length	Segment	Length
0010	1041						
0250	0442						
0500	0680						
0750	0527						

Primary Route Interchange Exit Number: 29

Secondary Route Interchange Exit Number



Last Date Modified:

Jul 30, 2024

County: 21

RMS Interchange Information

Print Form

Bureau of Maintenance & Operations
Asset Management Division



Interchange Number: 8017

Interchange Name: NEWVILLE INT

Intersecting SR's: I-81 & PA 233 Centerville Rd

Ramp Segment Number and Ramp Segment Length Information:

Segment	Length	Segment	Length	Segment	Length	Segment	Length
0010	0672						
0250	0700						
0500	0668						
0750	0650						

Primary Route Interchange Exit Number: 37

Secondary Route Interchange Exit Number

PennDOT Type 10 Map View:



Privacy Choices Consumer Health Privacy

Feedback

© 2024 Microsoft

Last Date Modified: Jul 30, 2024

County: 21

RMS Interchange Information

Bureau of Maintenance & Operations
Asset Management Division

Print Form



Interchange Number: 8019

Interchange Name: PLAINFIELD INT

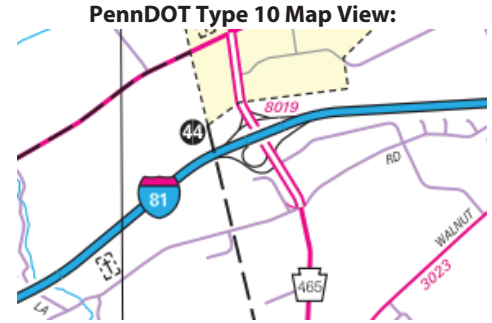
Intersecting SR's: I-81 & PA 465 Allen Rd

Ramp Segment Number and Ramp Segment Length Information:

Segment	Length	Segment	Length	Segment	Length	Segment	Length
0010	1540						
0020	1262						
0250	0792						
0500	0827						
0750	0827						

Primary Route Interchange Exit Number: 44

Secondary Route Interchange Exit Number



Privacy Choices Consumer Health Privacy

© 2024 Microsoft

Last Date Modified:

Aug 1, 2024

County: 21

RMS Interchange Information

Print Form

Interchange Number: 8021

Bureau of Maintenance & Operations
Asset Management Division



Interchange Name: COLLEGE STREET INT

Intersecting SR's: I-81 & SR 3023 Walnut Bottom Rd

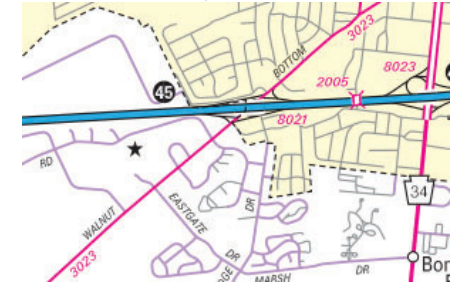
Ramp Segment Number and Ramp Segment Length Information:

Segment	Length	Segment	Length	Segment	Length	Segment	Length
0010	0638						
0250	0818						
0500	0635						
0750	0724						

Primary Route Interchange Exit Number: 45

Secondary Route Interchange Exit Number

PennDOT Type 10 Map View:



Privacy Choices Consumer Health Privacy

© 2024 Microsoft

Last Date Modified: Dec 17, 2024

County: 21

RMS Interchange Information

Bureau of Maintenance & Operations
Asset Management Division

Print Form



Interchange Number: 8023

Interchange Name: HANOVER STREET EXIT 14

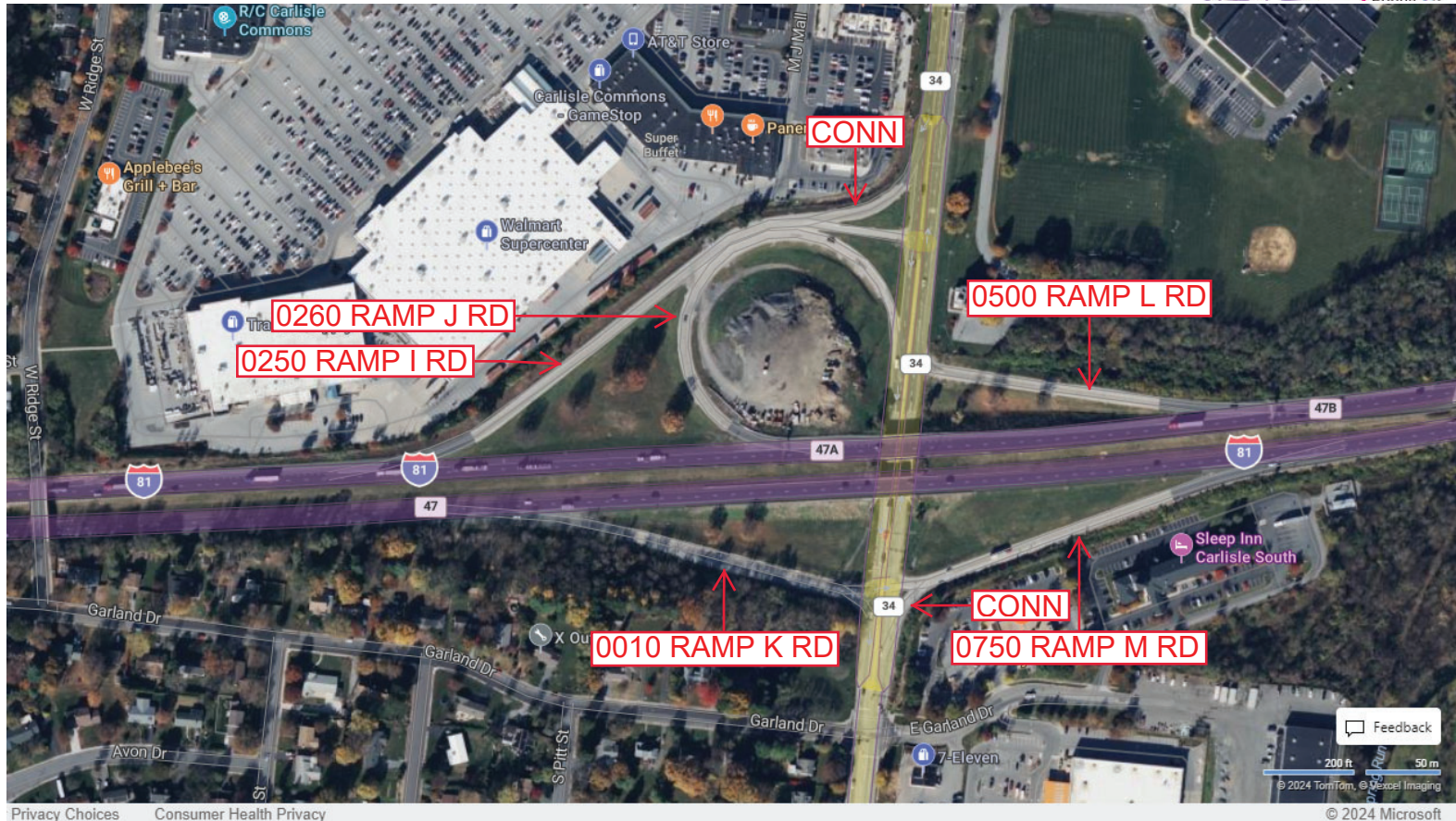
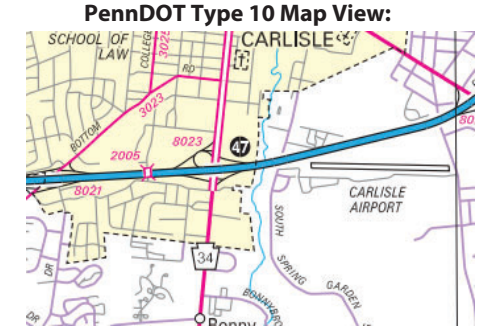
Intersecting SR's: I-81 & PA 34 Hanover St

Ramp Segment Number and Ramp Segment Length Information:

Segment	Length	Segment	Length	Segment	Length	Segment	Length
0010	0715						
0250	1260						
0260	0978						
0500	0629						
0750	0766						

Primary Route Interchange Exit Number: 47

Secondary Route Interchange Exit Number



Privacy Choices Consumer Health Privacy

Feedback

© 2024 Microsoft

Last Date Modified:

Aug 2, 2024

County: 21

RMS Interchange Information

Print Form

Interchange Number: 8025

Bureau of Maintenance & Operations
Asset Management Division



Interchange Name: YORK STREET EXIT

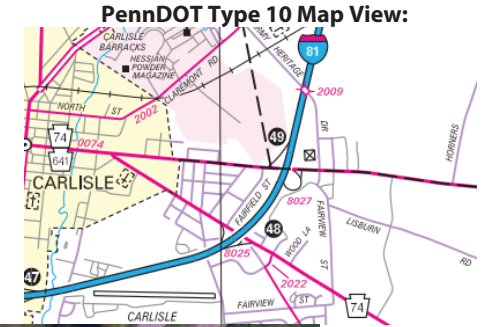
Intersecting SR's: I-81 & PA York Rd

Ramp Segment Number and Ramp Segment Length Information:

Segment	Length	Segment	Length	Segment	Length	Segment	Length
0010	0740						
0250	0733						

Primary Route Interchange Exit Number: 48

Secondary Route Interchange Exit Number



Privacy Choices Consumer Health Privacy

Last Date Modified: Aug 2, 2024

County: 21

RMS Interchange Information

Print Form

Interchange Number: 8027

Bureau of Maintenance & Operations
Asset Management Division



Interchange Name: HIGH STREET EXIT

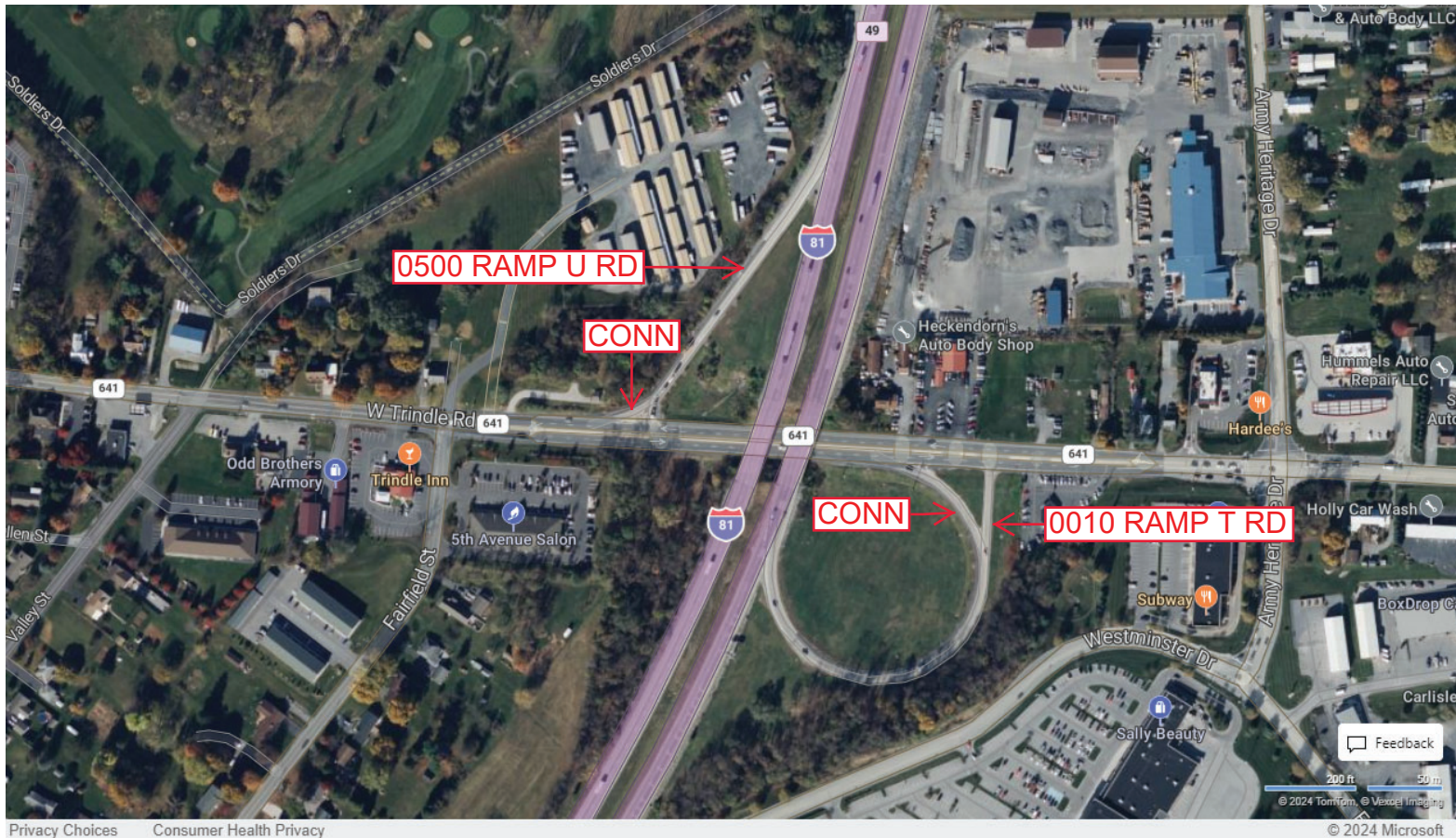
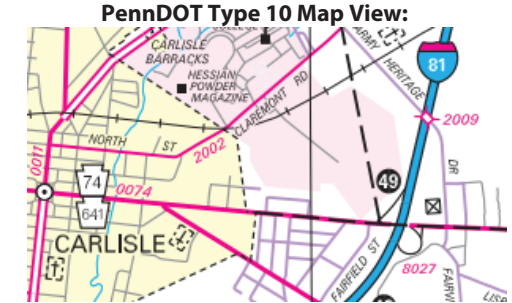
Intersecting SR's: I-81 & PA 641 Trindle Rd

Ramp Segment Number and Ramp Segment Length Information:

Segment	Length	Segment	Length	Segment	Length	Segment	Length
0010	1000						
0500	0671						

Primary Route Interchange Exit Number: 49

Secondary Route Interchange Exit Number



Last Date Modified: Aug 2, 2024

County: 21

RMS Interchange Information

Print Form

Interchange Number: 8029

Bureau of Maintenance & Operations
Asset Management Division



Interchange Name: MIDDLESEX/NEW KINGSTON INT

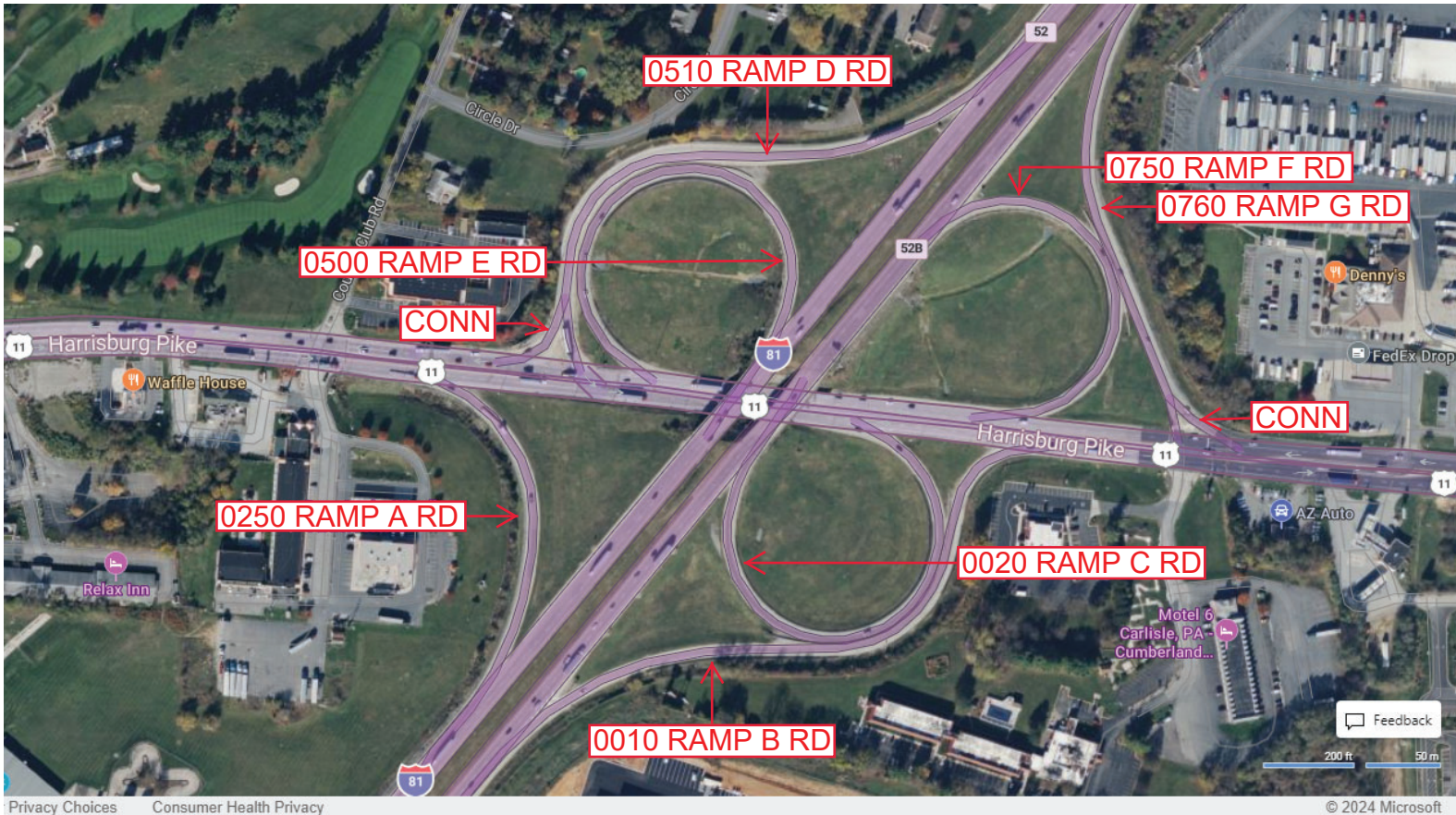
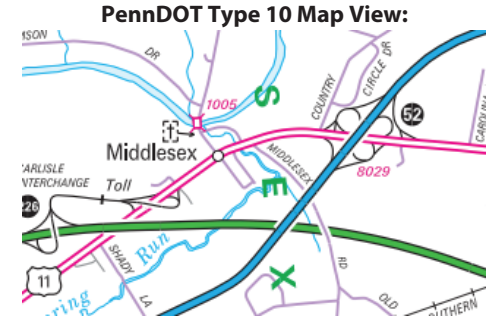
Intersecting SR's: I-81 & US 11 Harrisburg Pk

Ramp Segment Number and Ramp Segment Length Information:

Segment	Length	Segment	Length	Segment	Length	Segment	Length
0010	1257	0750	0756				
0020	1108	0760	0960				
0250	0663						
0500	1113						
0510	1228						

Primary Route Interchange Exit Number: 52

Secondary Route Interchange Exit Number: 52A



Last Date Modified:

Aug 5, 2024

County: 21

RMS Interchange Information

Print Form

Bureau of Maintenance & Operations
Asset Management Division



Interchange Number: 8031

Interchange Name: MECHANICSBURG INT

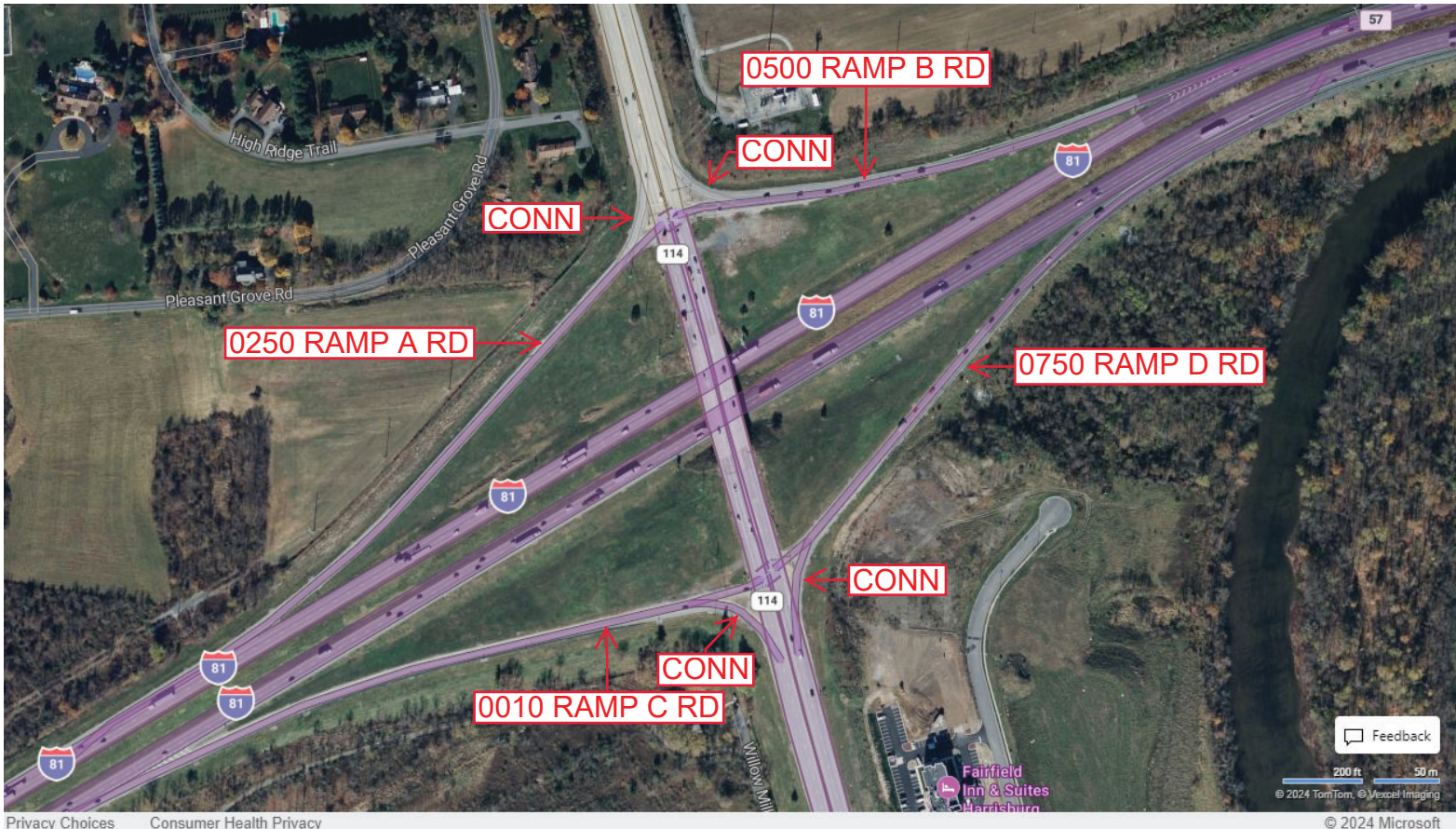
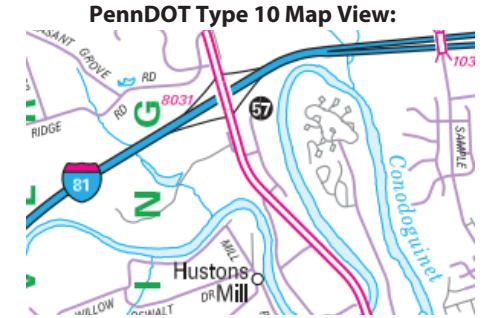
Intersecting SR's: I-81 & PA 114 Condoquinet Py

Ramp Segment Number and Ramp Segment Length Information:

Segment	Length	Segment	Length	Segment	Length	Segment	Length
0010	1504						
0250	1451						
0500	1254						
0750	1221						

Primary Route Interchange Exit Number: 57

Secondary Route Interchange Exit Number



Feedback

200 ft 50 m
© 2024 TomTom, © Mapbox, © Microsoft

Privacy Choices Consumer Health Privacy

© 2024 Microsoft

Last Date Modified: Aug 5, 2024

County: 21

RMS Interchange Information

Print Form

Bureau of Maintenance & Operations
Asset Management Division



Interchange Number: 8033

Interchange Name: CAMP HILL INT

Intersecting SR's: I-81 & PA 581 Amerocan Ex-POW Memorialk Hw

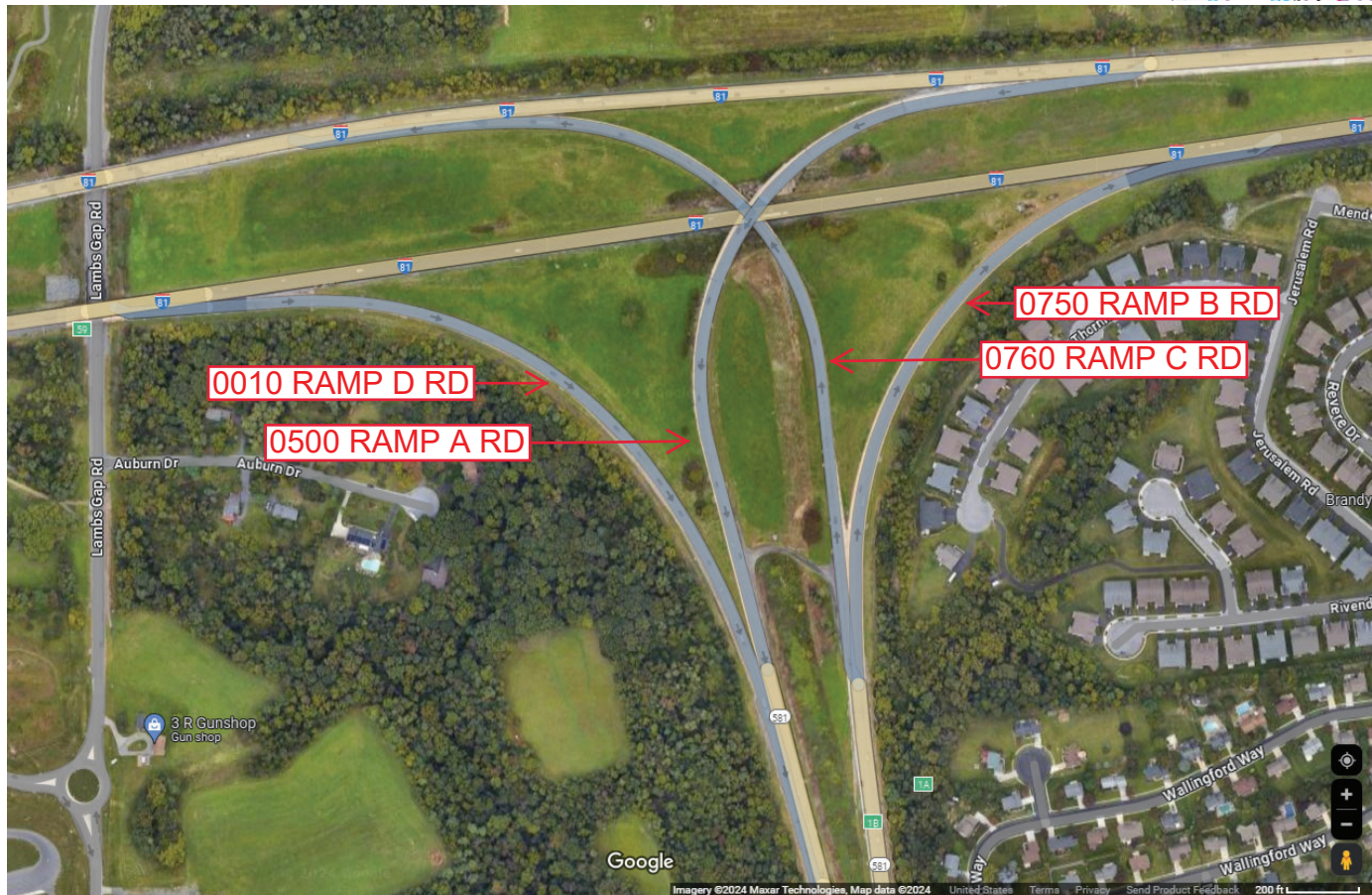
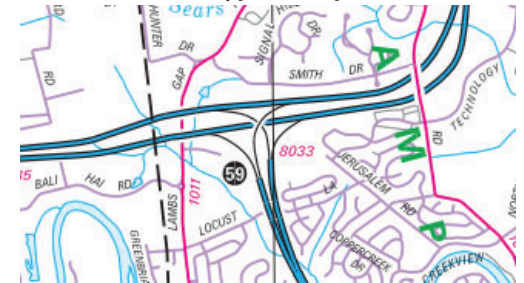
Ramp Segment Number and Ramp Segment Length Information:

Segment	Length	Segment	Length	Segment	Length	Segment	Length
0010	1919						
0500	2034						
0750	1384						
0760	1677						

Primary Route Interchange Exit Number: 59

Secondary Route Interchange Exit Number: 1A/1B

PennDOT Type 10 Map View:



Last Date Modified: Aug 5, 2024

County: 21

RMS Interchange Information

Print Form

Bureau of Maintenance & Operations
Asset Management Division



Interchange Number: 8035

Interchange Name: WERTZVILLE ROAD INT

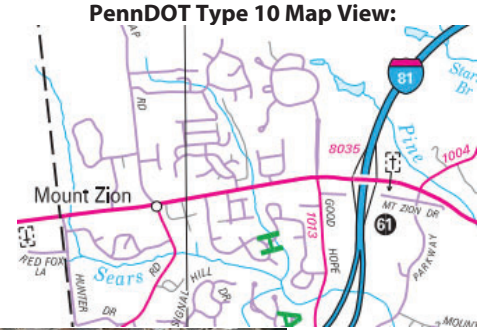
Intersecting SR's: I-81 & PA 944 Wertzville Rd

Ramp Segment Number and Ramp Segment Length Information:

Segment	Length	Segment	Length	Segment	Length	Segment	Length
0010	1051						
0250	0831						
0500	1214						
0750	1111						

Primary Route Interchange Exit Number: 61

Secondary Route Interchange Exit Number



Last Date Modified: Aug 6, 2024

County: 21

RMS Interchange Information

Print Form

Bureau of Maintenance & Operations
Asset Management Division



Interchange Number: 8044

Interchange Name: ERFORD ROAD INT

Intersecting SR's: SR 1014 Camp Hill Bp & SR 1025 Erford Rd

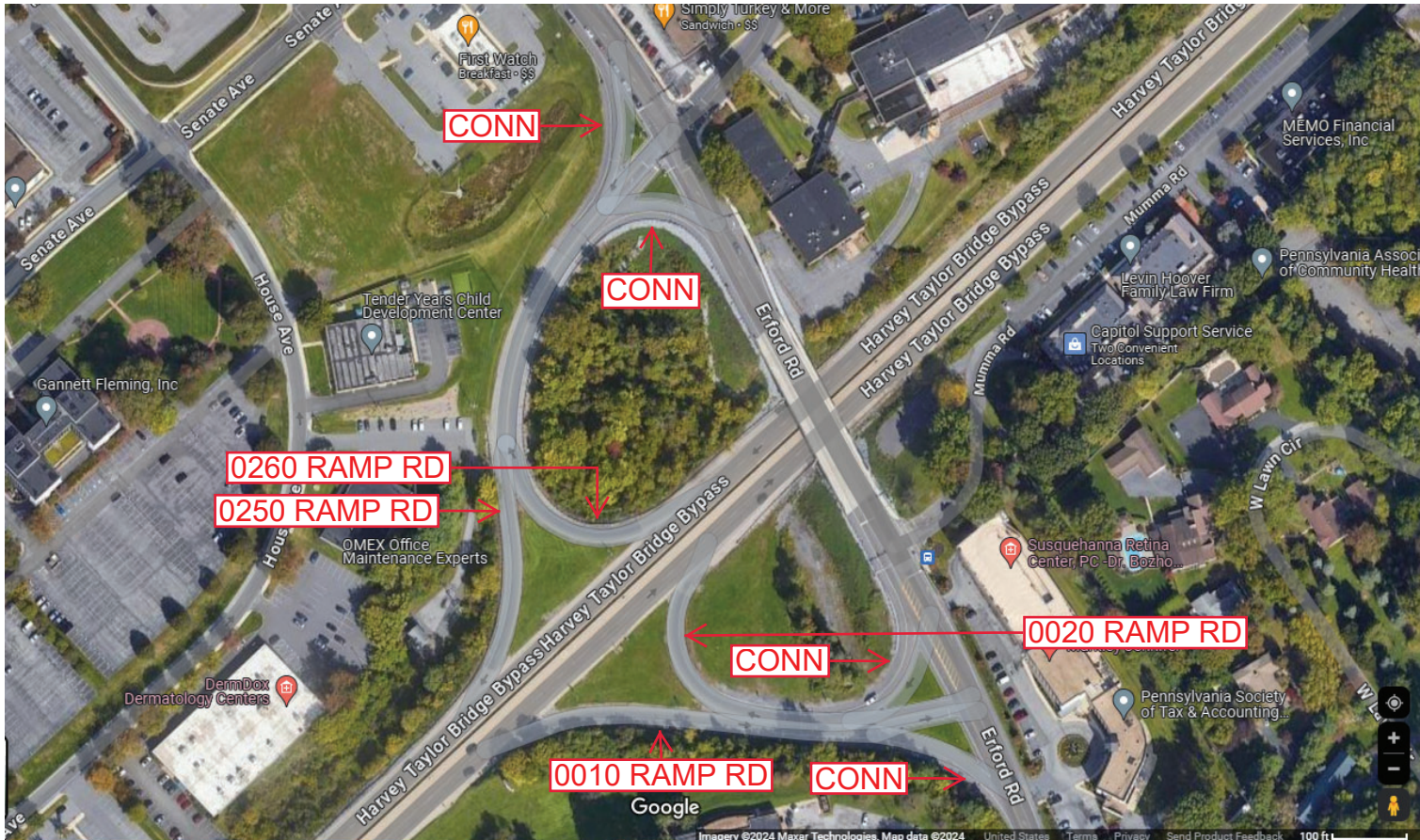
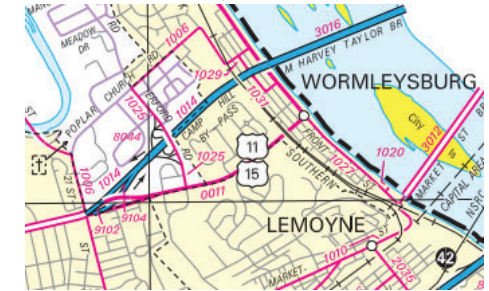
Ramp Segment Number and Ramp Segment Length Information:

Segment	Length	Segment	Length	Segment	Length	Segment	Length
0010	0567						
0020	0475						
0250	0800						
0260	0693						

Primary Route Interchange Exit Number

Secondary Route Interchange Exit Number

PennDOT Type 10 Map View:



Last Date Modified: Aug 6, 2024

County: 21

RMS Interchange Information

Print Form

Interchange Number: 8045

Bureau of Maintenance & Operations
Asset Management Division



Interchange Name: WINDING HILL ROAD INT

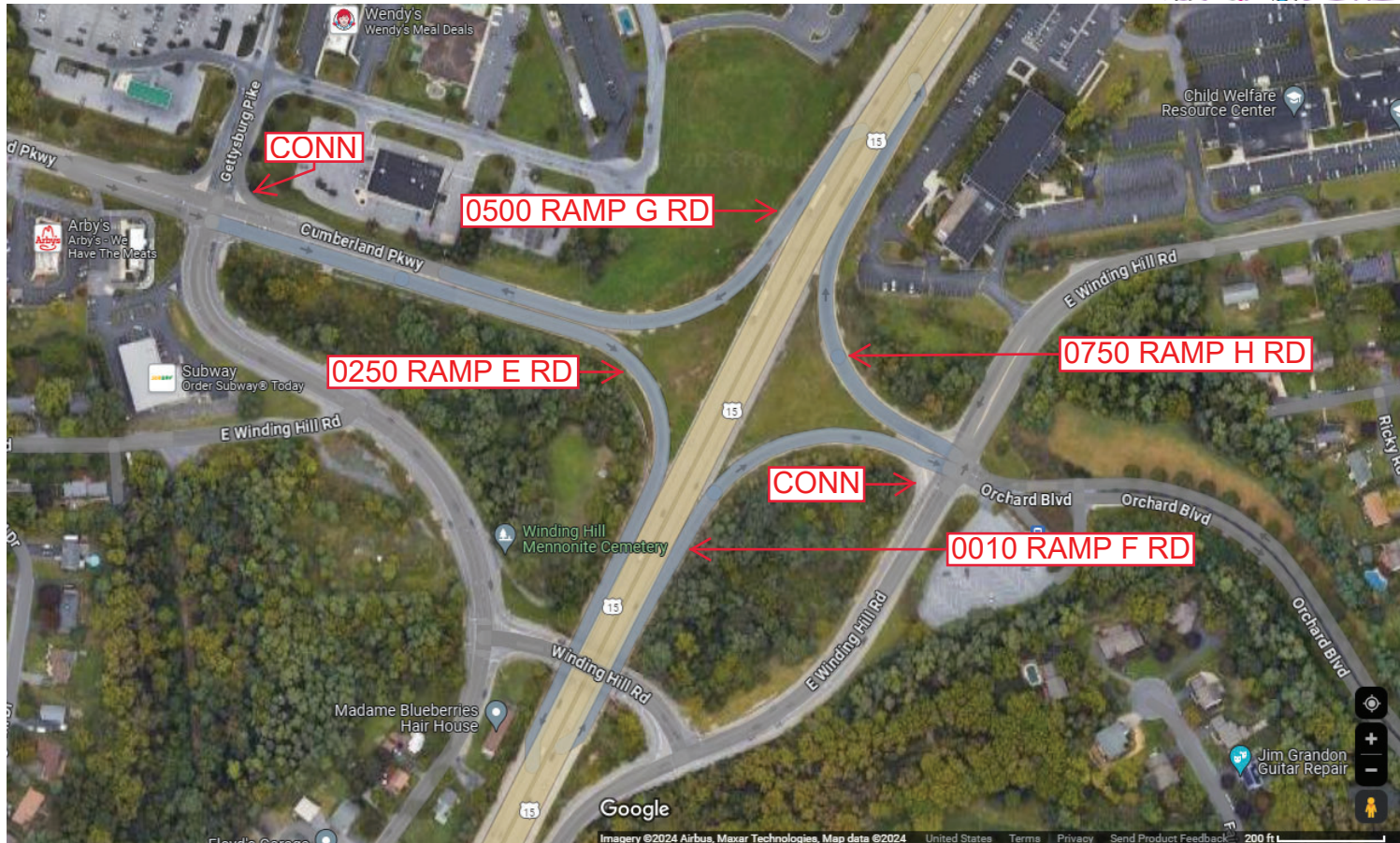
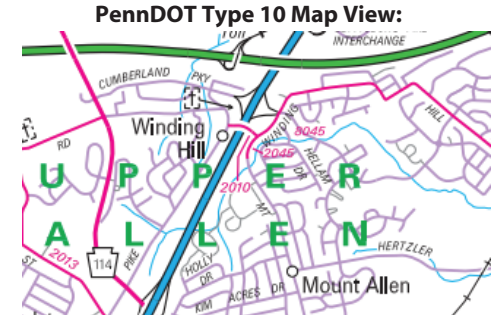
Intersecting SR's: US 15, SR 2010 Winding Hill Rd & TWP CumberlandPky

Ramp Segment Number and Ramp Segment Length Information:

Segment	Length	Segment	Length	Segment	Length	Segment	Length
0010	0463						
0250	1062						
0500	1130						
0750	0439						

Primary Route Interchange Exit Number

Secondary Route Interchange Exit Number



Last Date Modified: Aug 7, 2024

County: 21

RMS Interchange Information

Bureau of Maintenance & Operations
Asset Management Division

Print Form



Interchange Number: 8046

Interchange Name: CREEKVIEW EXIT

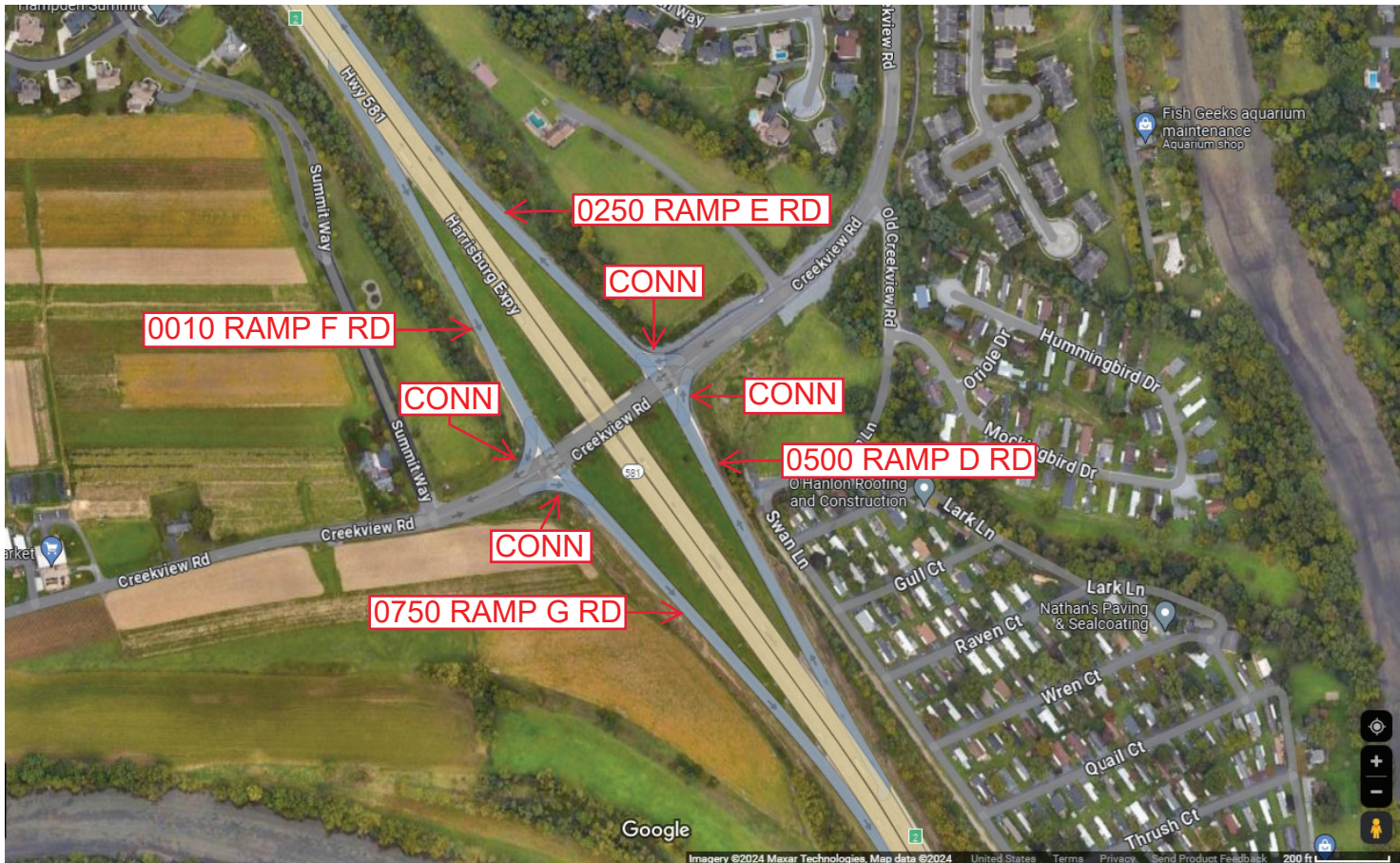
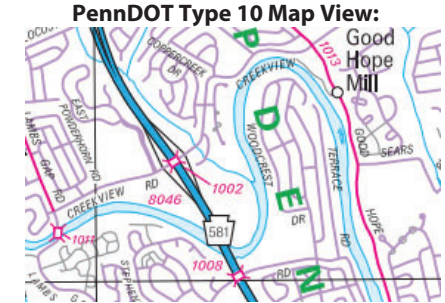
Intersecting SR's: PA 581 & SR 1002 Creekview Rd

Ramp Segment Number and Ramp Segment Length Information:

Segment	Length	Segment	Length	Segment	Length	Segment	Length
0010	0885						
0250	0783						
0500	0911						
0750	1060						

Primary Route Interchange Exit Number: 2

Secondary Route Interchange Exit Number



Last Date Modified:

Aug 8, 2024

County: 21

RMS Interchange Information

Print Form

Interchange Number: 8047

Bureau of Maintenance & Operations
Asset Management Division



Interchange Name: LISBURN ROAD INT

Intersecting SR's: US 15 & SR 2004 Lisburn Rd

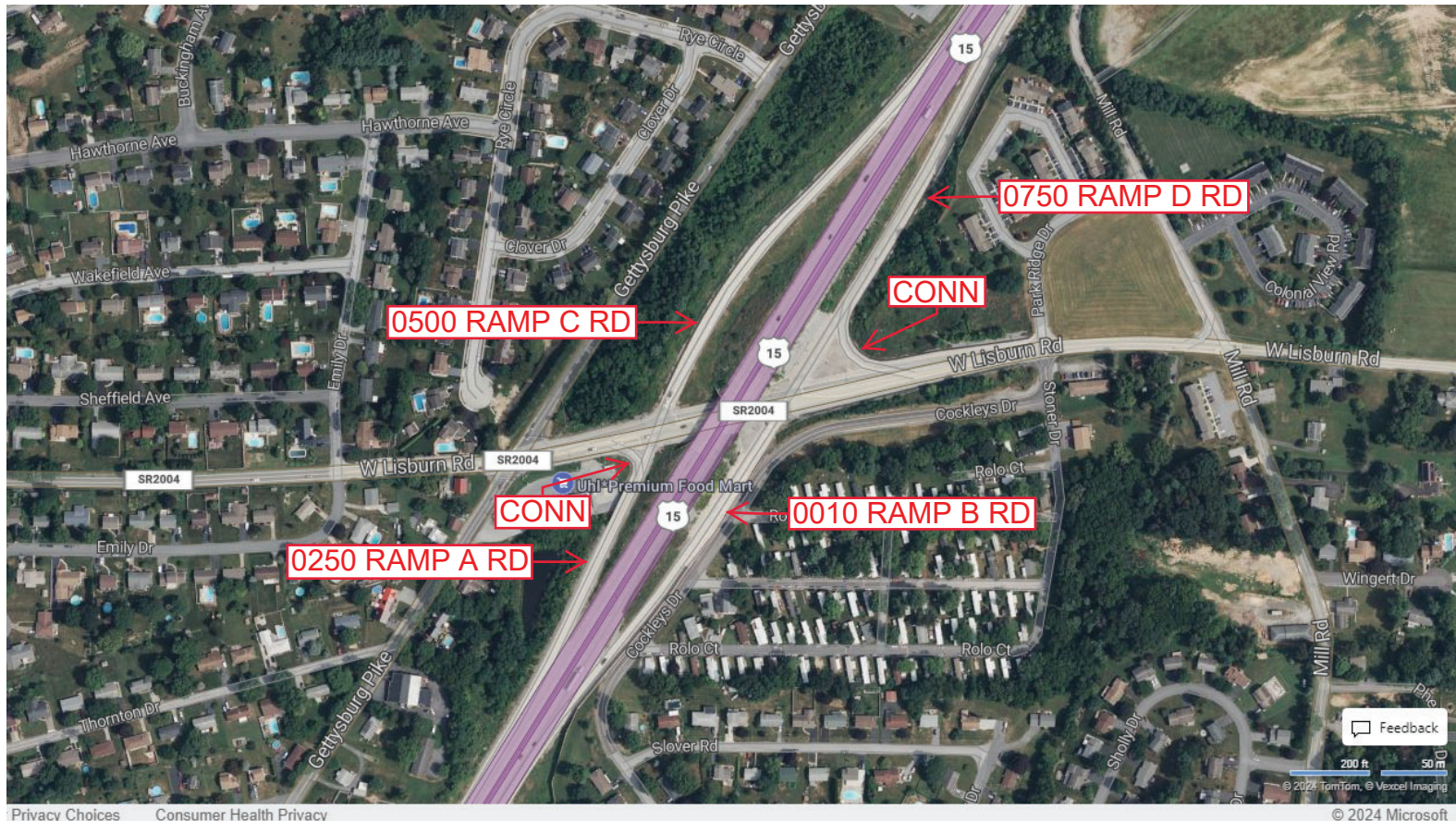
Ramp Segment Number and Ramp Segment Length Information:

Segment	Length	Segment	Length	Segment	Length	Segment	Length
0010	0733						
0250	0551						
0500	0993						
0750	1030						

Primary Route Interchange Exit Number

Secondary Route Interchange Exit Number

PennDOT Type 10 Map View:



Privacy Choices Consumer Health Privacy

© 2024 Microsoft

Last Date Modified:

Aug 9, 2024

County: 21

RMS Interchange Information

Print Form

Interchange Number: 8048

Bureau of Maintenance & Operations
Asset Management Division



Interchange Name: US 11 & PA 581

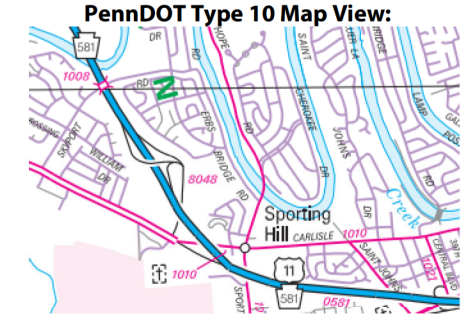
Intersecting SR's: US 11, PA 5891 & SR 1010 Carlisle Pk

Ramp Segment Number and Ramp Segment Length Information:

Segment	Length	Segment	Length	Segment	Length	Segment	Length
0010	4445						
0250	3629						
0260	0736						
0750	0625						

Primary Route Interchange Exit Number: 3

Secondary Route Interchange Exit Number



Last Date Modified:

Jan 28, 2025

County: 21

RMS Interchange Information

Bureau of Maintenance & Operations
Asset Management Division

Print Form



Interchange Number: 8051

Interchange Name: CAPITAL CITY MALL DRIVE

Intersecting SR's: US 15, SR 2014 & SR 2051 Capital City Mall Dr

Ramp Segment Number and Ramp Segment Length Information:

Segment	Length	Segment	Length	Segment	Length	Segment	Length
0010	0558	0770	0780				
0250	0462						
0500	0402						
0750	0857						
0760	1765						

Primary Route Interchange Exit Number

Secondary Route Interchange Exit Number

PennDOT Type 10 Map View:



Last Date Modified:

Aug 9, 2024

County: 21

RMS Interchange Information

Print Form

Interchange Number: 8113

Bureau of Maintenance & Operations
Asset Management Division



Interchange Name: I-83 & PA 581

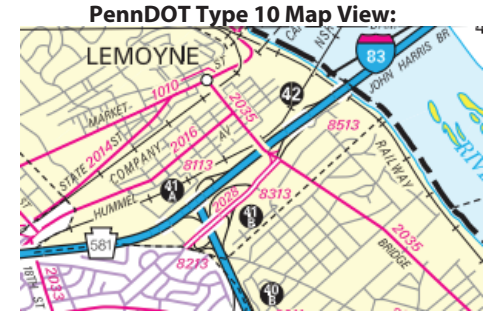
Intersecting SR's: I-83 & PA 581

Ramp Segment Number and Ramp Segment Length Information:

Segment	Length	Segment	Length	Segment	Length	Segment	Length
0020	1897						
0250	1414						
0760	1258						

Primary Route Interchange Exit Number: 41A

Secondary Route Interchange Exit Number: 6B/6C



Last Date Modified: Aug 16, 2024

County: 21

RMS Interchange Information

Print Form

Bureau of Maintenance & Operations
Asset Management Division



Interchange Number: 8213

Interchange Name: HIGHLAND PARK INT

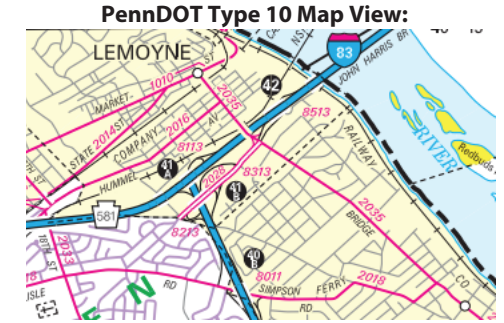
Intersecting SR's: I-83 & SR 2028 Lowther St

Ramp Segment Number and Ramp Segment Length Information:

Segment	Length	Segment	Length	Segment	Length	Segment	Length
0250	0639						
0260	0710						

Primary Route Interchange Exit Number: 41B

Secondary Route Interchange Exit Number



Last Date Modified: Aug 16, 2024

County: 21

RMS Interchange Information

Bureau of Maintenance & Operations
Asset Management Division

Print Form



Interchange Number: 8513

Interchange Name: LEMOYNE INT

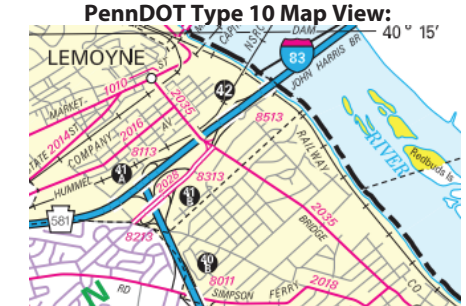
Intersecting SR's: I-83 & SR 2028 Lowther St

Ramp Segment Number and Ramp Segment Length Information:

Segment	Length	Segment	Length	Segment	Length	Segment	Length
0500	1899						
0750	1297						
0760	0675						

Primary Route Interchange Exit Number: 41B

Secondary Route Interchange Exit Number



Last Date Modified:

Aug 21, 2024

County: 21

RMS Interchange Information

Bureau of Maintenance & Operations
Asset Management Division

Print Form



Interchange Number: 9102

Interchange Name: CAMP HILL BYPASS

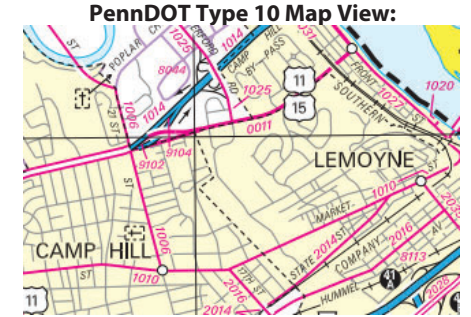
Intersecting SR's: US 11 & SR 9104

Ramp Segment Number and Ramp Segment Length Information:

Segment	Length	Segment	Length	Segment	Length	Segment	Length
0010	0239						

Primary Route Interchange Exit Number

Secondary Route Interchange Exit Number



Last Date Modified:

Aug 21, 2024

County: 21

RMS Interchange Information

Print Form

Interchange Number: 9104

Bureau of Maintenance & Operations
Asset Management Division



Interchange Name: CONNECTOR FROM US 15 TO SR 1006

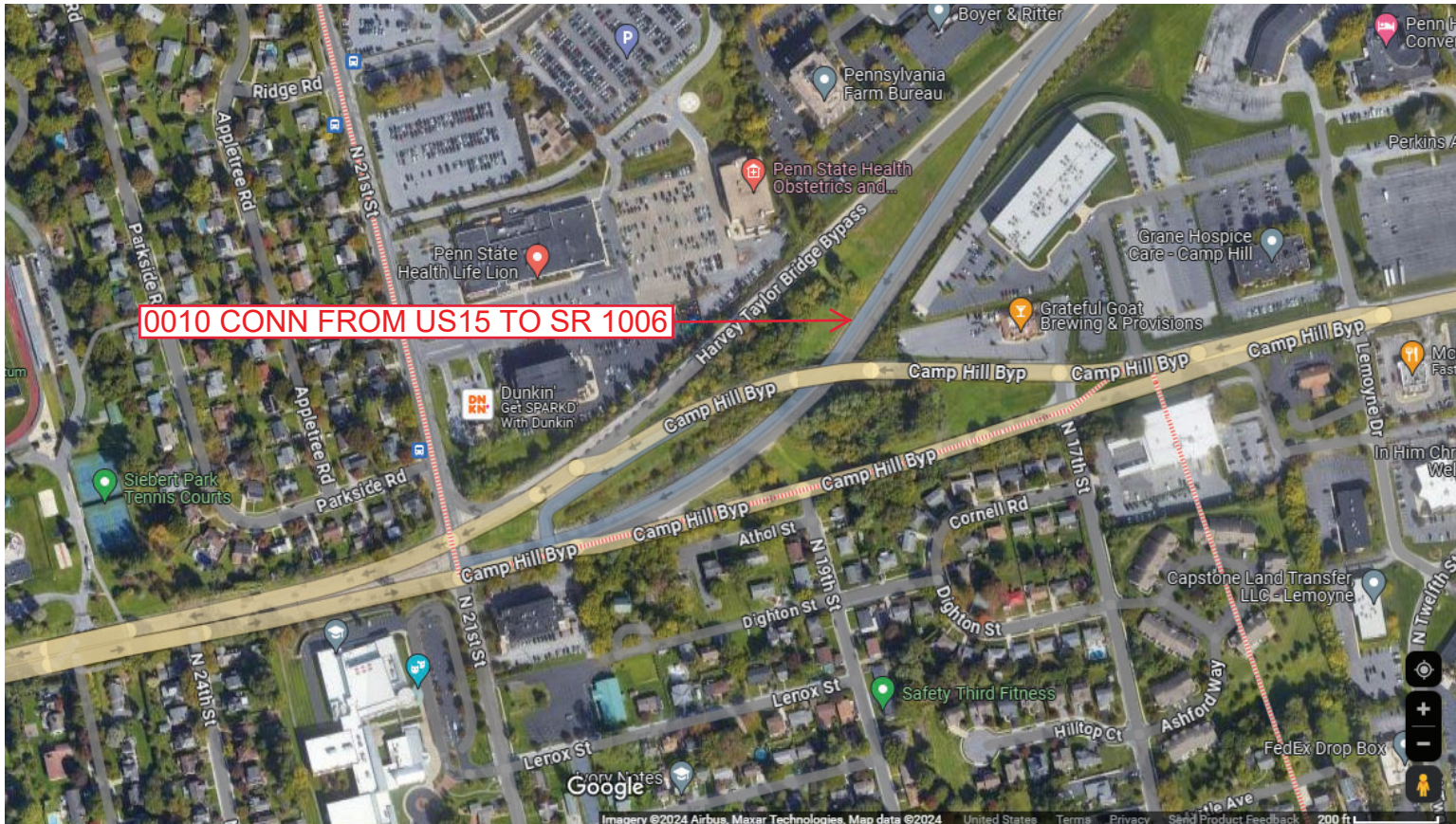
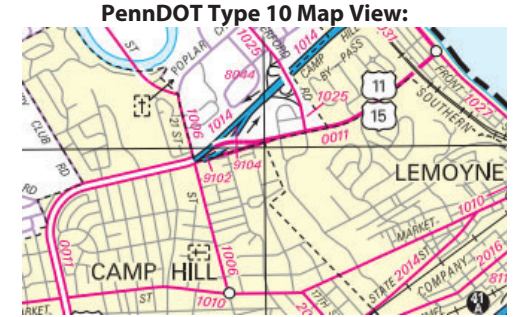
Intersecting SR's: SR 1006 Twentyfirst St, SR 1014 & SR 9102

Ramp Segment Number and Ramp Segment Length Information:

Segment	Length	Segment	Length	Segment	Length	Segment	Length
0010	1865						

Primary Route
Interchange Exit
Number

Secondary Route
Interchange Exit
Number



Last Date Modified:

Aug 22, 2024

County: 21

RMS Interchange Information

Bureau of Maintenance & Operations
Asset Management Division

Print Form



Interchange Number: 9105

Interchange Name: WYE-GETTYSBURG RD

Intersecting SR's: SR 2014 Simpson Ferry Rd & SR 2027 Gettysburg Rd

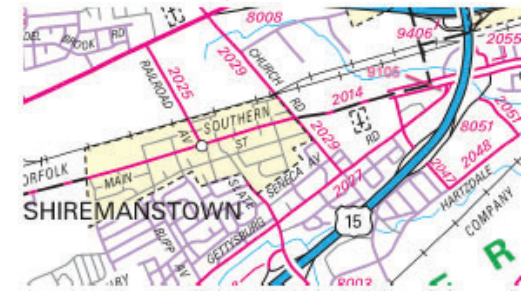
Ramp Segment Number and Ramp Segment Length Information:

Segment	Length	Segment	Length	Segment	Length	Segment	Length
0010	0183						

Primary Route Interchange Exit Number

Secondary Route Interchange Exit Number

PennDOT Type 10 Map View:



Last Date Modified:

Aug 22, 2024

County: 21

RMS Interchange Information

Print Form

Bureau of Maintenance & Operations
Asset Management Division



Interchange Number: 9201

Interchange Name: I-81 SB REST AREA

Intersecting SR's: I-81

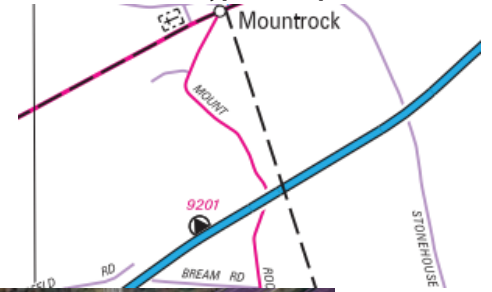
Ramp Segment Number and Ramp Segment Length Information:

Segment	Length	Segment	Length	Segment	Length	Segment	Length
0010	1985						

Primary Route Interchange Exit Number

Secondary Route Interchange Exit Number

PennDOT Type 10 Map View:



Privacy Choices Consumer Health Privacy

Feedback

200 ft 50 m
© 2024 TomTom, © Vexcel Imaging

© 2024 Microsoft

Last Date Modified:

Aug 22, 2024

County: 21

RMS Interchange Information

Print Form

Bureau of Maintenance & Operations
Asset Management Division



Interchange Number: 9202

Interchange Name: I-81 NB REST AREA

Intersecting SR's: I-81

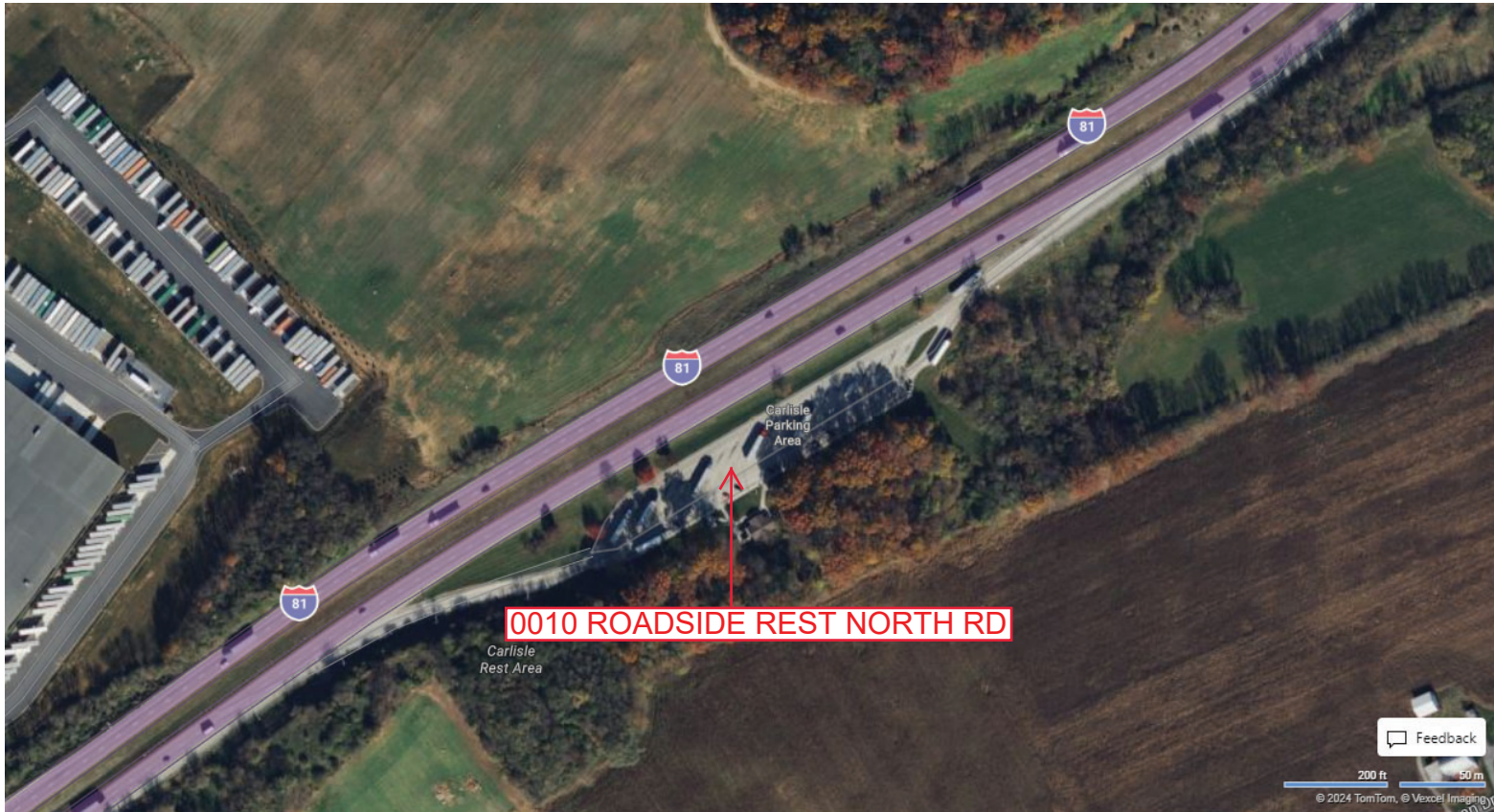
Ramp Segment Number and Ramp Segment Length Information:

Segment	Length	Segment	Length	Segment	Length	Segment	Length
0010	1537						

Primary Route Interchange Exit Number

Secondary Route Interchange Exit Number

PennDOT Type 10 Map View:



Privacy Choices Consumer Health Privacy

Feedback

200 ft 50 m

© 2024 TomTom, © Vexcel Imaging

© 2024 Microsoft

Last Date Modified:

Aug 23, 2024

County: 21

RMS Interchange Information

Bureau of Maintenance & Operations
Asset Management Division

Print Form



Interchange Number: 9402

Interchange Name: SR 9402 SH

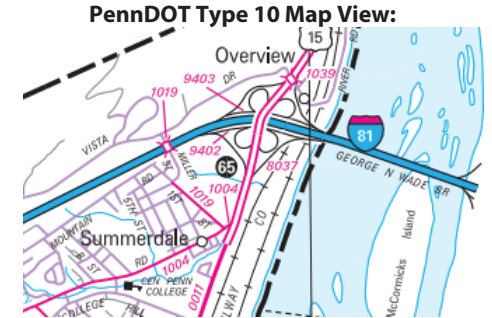
Intersecting SR's: I-81 & SR 8037 Enola/Marysville

Ramp Segment Number and Ramp Segment Length Information:

Segment	Length	Segment	Length	Segment	Length	Segment	Length
0010	2621						

Primary Route Interchange Exit Number: 65

Secondary Route Interchange Exit Number:



Last Date Modified:

Aug 23, 2024

County: 21

RMS Interchange Information

Bureau of Maintenance & Operations
Asset Management Division

Print Form



Interchange Number: 9403

Interchange Name: SR 9403 SH

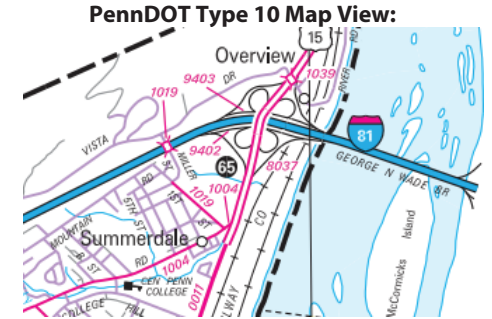
Intersecting SR's: I-81 & SR 8037 Enola/Marysville

Ramp Segment Number and Ramp Segment Length Information:

Segment	Length	Segment	Length	Segment	Length	Segment	Length
0500	2740						

Primary Route Interchange Exit Number: 65

Secondary Route Interchange Exit Number



Feedback

300 ft 100 m
© 2024 TomTom, © Vexcel Imaging

Privacy Choices Consumer Health Privacy

© 2024 Microsoft

Last Date Modified: Aug 23, 2024

County: 21

RMS Interchange Information

Bureau of Maintenance & Operations
Asset Management Division

Print Form



Interchange Number: 9406

Interchange Name: SR 9406 SH

Intersecting SR's: PA 581 American Ex-Pow Mem Hw

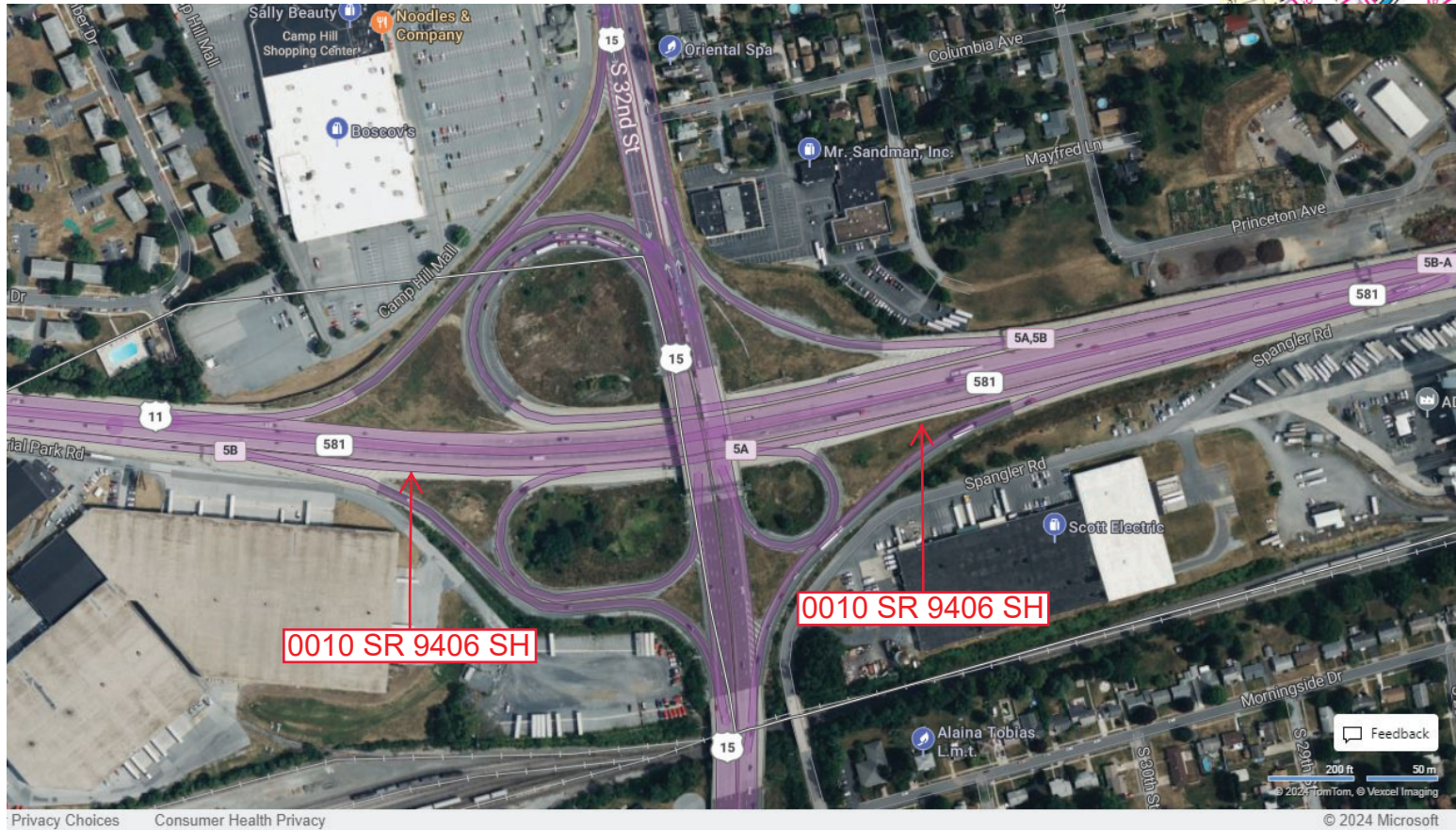
Ramp Segment Number and Ramp Segment Length Information:

Segment	Length	Segment	Length	Segment	Length	Segment	Length
0010	2342						

Primary Route Interchange Exit Number

Secondary Route Interchange Exit Number

PennDOT Type 10 Map View:



Last Date Modified: Aug 27, 2024

County: 21

RMS Interchange Information

Print Form

Interchange Number: 9408

Bureau of Maintenance & Operations
Asset Management Division



Interchange Name: JUGHANDLE ROAD

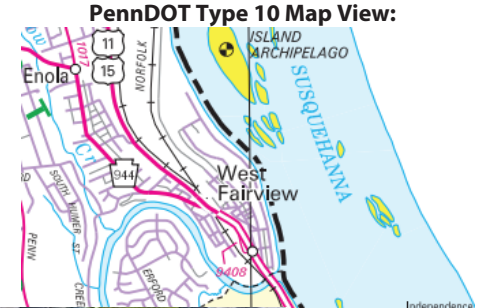
Intersecting SR's: US 11 Enola Rd & BORO Market St

Ramp Segment Number and Ramp Segment Length Information:

Segment	Length	Segment	Length	Segment	Length	Segment	Length
0010	0210						

Primary Route
Interchange Exit
Number

Secondary Route
Interchange Exit
Number



Last Date Modified:

Jul 16, 2024

County: 21

RMS Interchange Information

Print Form

Bureau of Maintenance & Operations
Asset Management Division



Interchange Number: 9502

Interchange Name: NEWVILLE PARK & RIDE

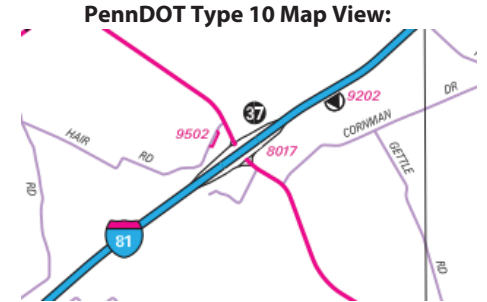
Intersecting SR's: T429 Hair Rd

Ramp Segment Number and Ramp Segment Length Information:

Segment	Length	Segment	Length	Segment	Length	Segment	Length
0010	0416						

Primary Route Interchange Exit Number

Secondary Route Interchange Exit Number



Privacy Choices Consumer Health Privacy

Last Date Modified: Sep 10, 2024

County: 21

RMS Interchange Information

Bureau of Maintenance & Operations
Asset Management Division

Print Form



Interchange Number: 9504

Interchange Name: WERTZVILLE PARK & RIDE

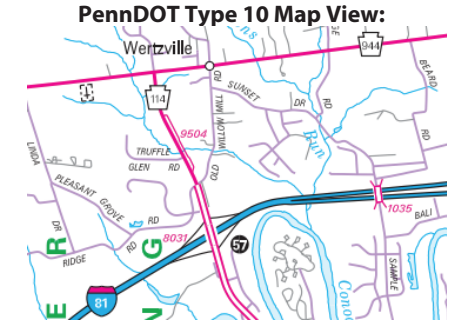
Intersecting SR's: PA 114 Wertzville Rd

Ramp Segment Number and Ramp Segment Length Information:

Segment	Length	Segment	Length	Segment	Length	Segment	Length
0010	2000						

Primary Route Interchange Exit Number

Secondary Route Interchange Exit Number



Privacy Choices Consumer Health Privacy

© 2024 Microsoft

Last Date Modified: Aug 27, 2024