

County: 22

# RMS Interchange Information

Print Form

Bureau of Maintenance & Operations  
Asset Management Division



Interchange Number: 8001

Interchange Name: FRONT STREET INT

Intersecting SR's: I-81 & SR 3009 Front St

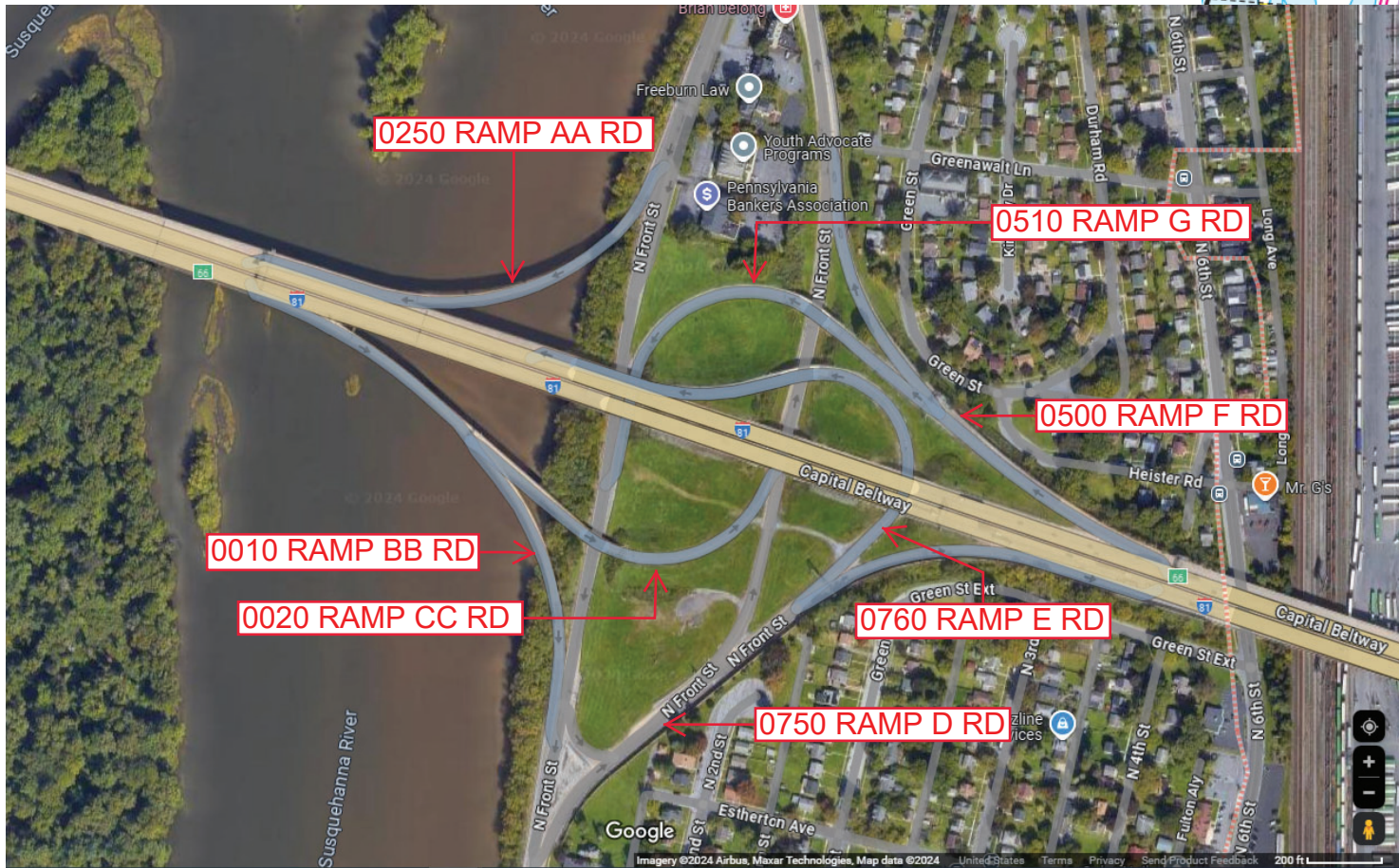
Ramp Segment Number and Ramp Segment Length Information:

Segment	Length	Segment	Length	Segment	Length	Segment	Length
0010	1154	0750	0714				
0020	0838	0760	1101				
0250	0731						
0500	1095						
0510	0908						

Primary Route Interchange Exit Number: 66

Secondary Route Interchange Exit Number

PennDOT Type 10 Map View:



Last Date Modified: Sep 10, 2024

County: 22

# RMS Interchange Information

Print Form

Interchange Number: 8003

Bureau of Maintenance & Operations  
Asset Management Division



Interchange Name: CAMERON STRTEET INT

Intersecting SR's: I-81 & US 22

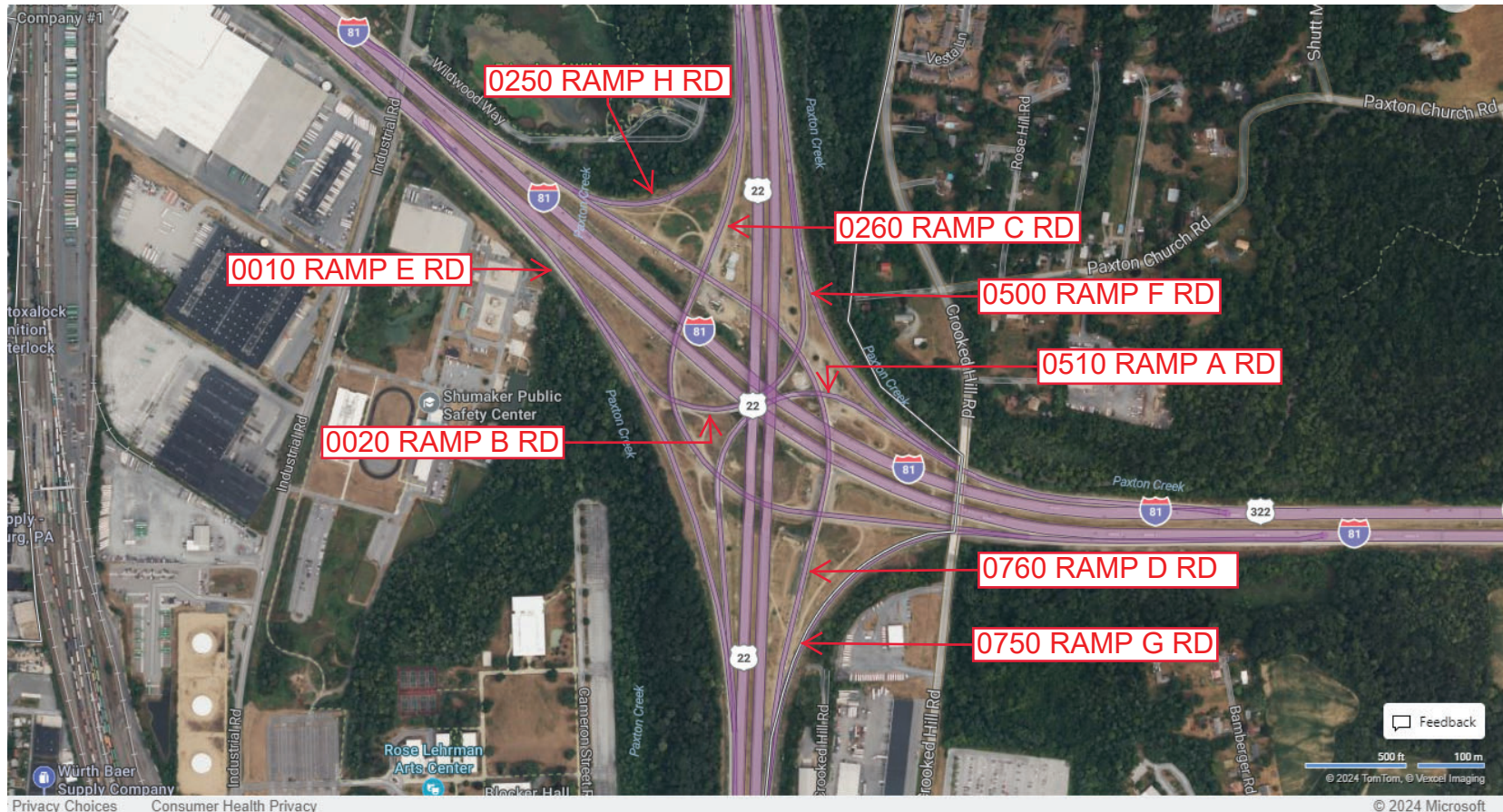
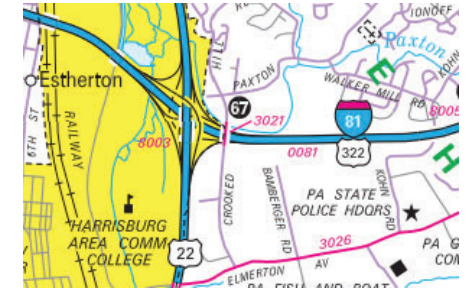
Ramp Segment Number and Ramp Segment Length Information:

Segment	Length	Segment	Length	Segment	Length	Segment	Length
0010	2377	0510	2320				
0020	2356	0750	1722				
0250	1433	0760	3636				
0260	3491						
0500	2028						

Primary Route Interchange Exit Number: 67

Secondary Route Interchange Exit Number

PennDOT Type 10 Map View:



Last Date Modified:

Sep 10, 2024

County: 22

# RMS Interchange Information

Print Form

Interchange Number: 8004

Bureau of Maintenance & Operations  
Roadway Management Division



Interchange Name: CLARKS FERRY

Intersecting SR's: US 22 William Penn Hw & PA 147 River Rd

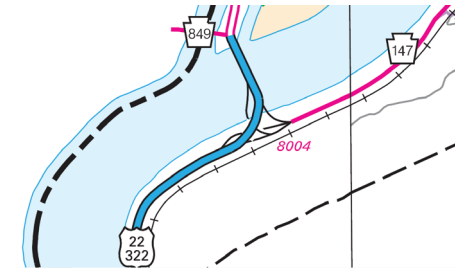
Ramp Segment Number and Ramp Segment Length Information:

Segment	Length	Segment	Length	Segment	Length	Segment	Length
0010	0892						
0250	0685						
0260	0725						
0500	0813						

Primary Route  
Interchange Exit  
Number

Secondary Route  
Interchange Exit  
Number

PennDOT Type 10 Map View:



Last Date Modified:

Jun 17, 2020

County: 22

# RMS Interchange Information

Print Form

Interchange Number: 8005

Bureau of Maintenance & Operations  
Roadway Management Division



Interchange Name: PROGRESS AVE

Intersecting SR's: I-81 & SR 3015 Progress Av

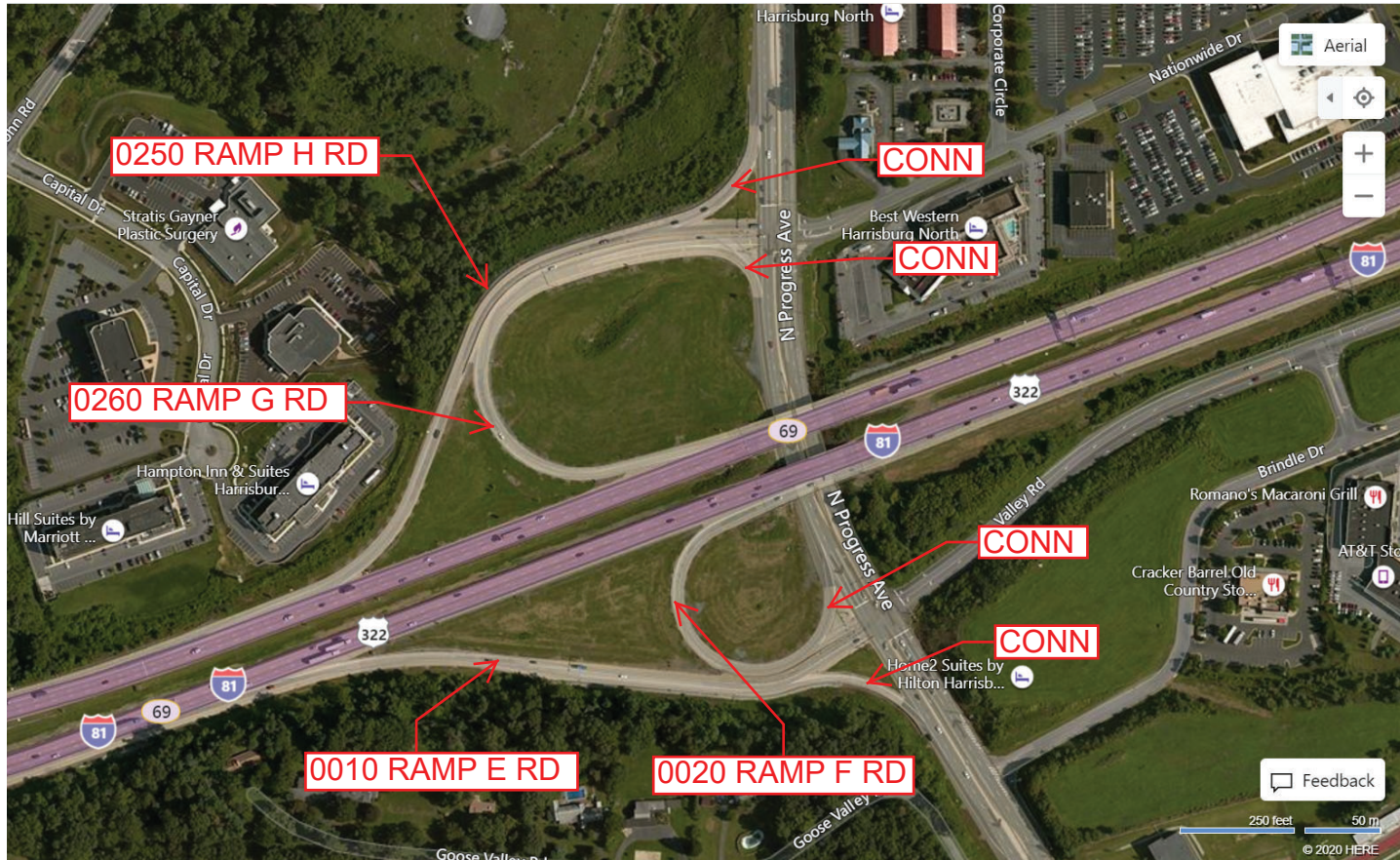
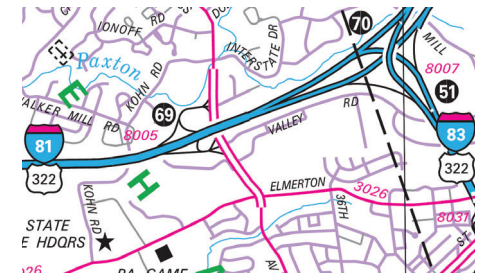
Ramp Segment Number and Ramp Segment Length Information:

Segment	Length	Segment	Length	Segment	Length	Segment	Length
0010	1194						
0020	0703						
0250	1310						
0260	1222						

Primary Route Interchange Exit Number: 69

Secondary Route Interchange Exit Number

PennDOT Type 10 Map View:



Last Date Modified: Jun 17, 2020

County: 22

# RMS Interchange Information

Print Form

Interchange Number: 8006

Bureau of Maintenance & Operations  
Asset Management Division



Interchange Name: FISHING CREEK EXIT

Intersecting SR's: US 22 & PA 443 Fishing Creek Valley Rd

Ramp Segment Number and Ramp Segment Length Information:

Segment	Length	Segment	Length	Segment	Length	Segment	Length
0010	0699						
0250	0997						
0500	0832						

Primary Route Interchange Exit Number

Secondary Route Interchange Exit Number

PennDOT Type 10 Map View:



County: 22

# RMS Interchange Information

Print Form

Interchange Number: 8007

Bureau of Maintenance & Operations  
Asset Management Division



Interchange Name: I-81 & I-83 SPLIT

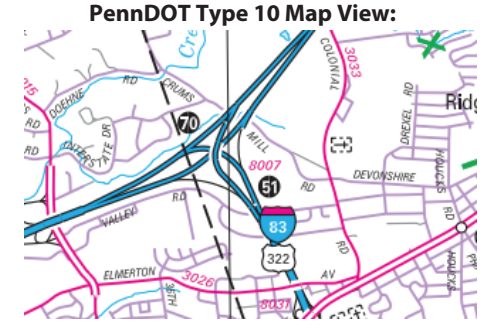
Intersecting SR's: I-80 & I-83

Ramp Segment Number and Ramp Segment Length Information:

Segment	Length	Segment	Length	Segment	Length	Segment	Length
0010	1957						
0750	2195						

Primary Route Interchange Exit Number: 70

Secondary Route Interchange Exit Number: 51B



Last Date Modified: Sep 11, 2024

County: 22

# RMS Interchange Information

Print Form

Interchange Number: 8008

Bureau of Maintenance & Operations  
Asset Management Division



Interchange Name: LINGLESTOWN ROAD INT

Intersecting SR's: US 22 Wm B Lentz Hw & PA 39 Linglestown Rd

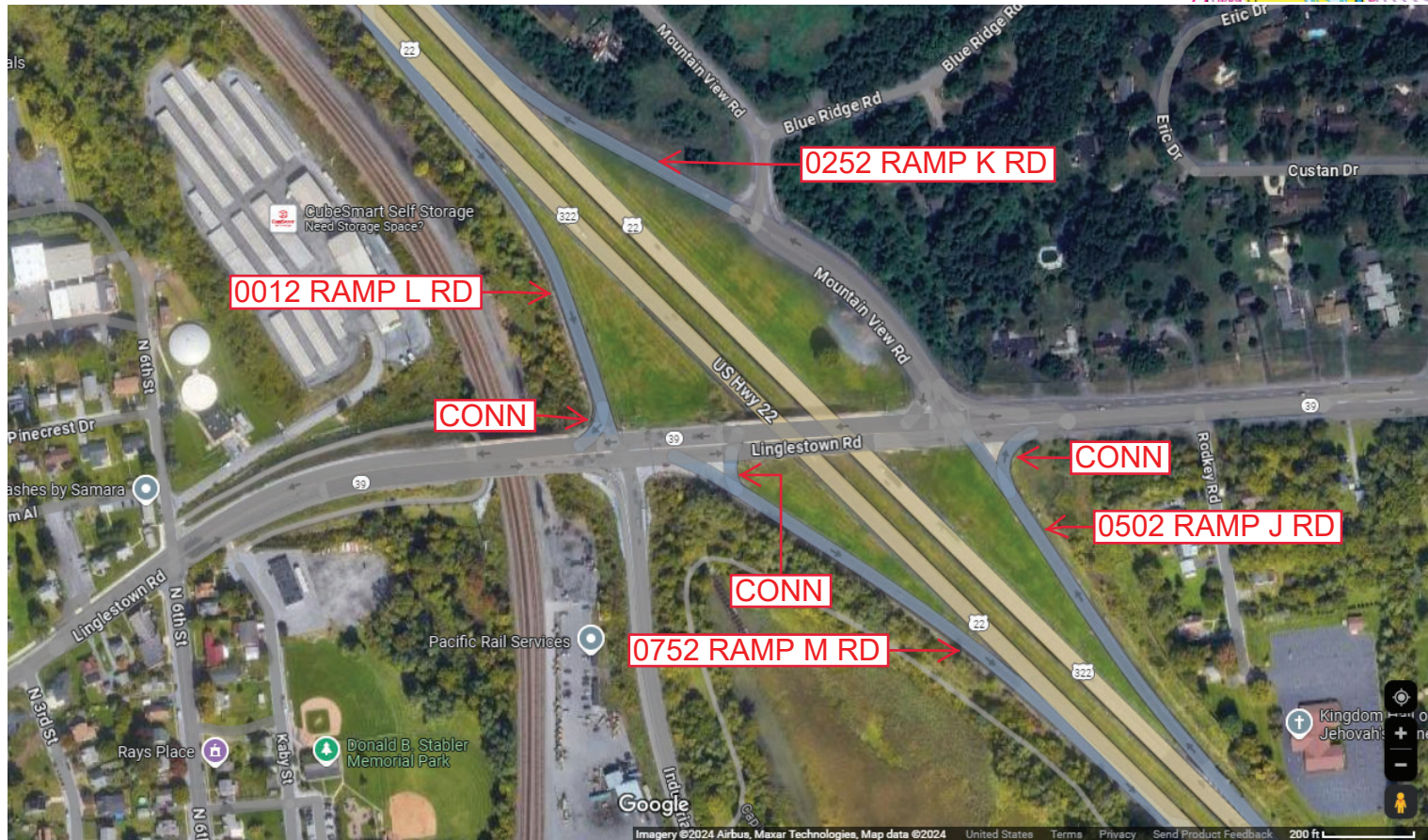
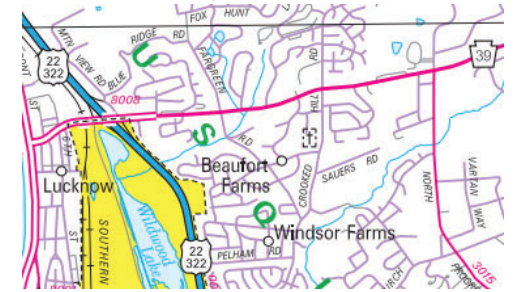
Ramp Segment Number and Ramp Segment Length Information:

Segment	Length	Segment	Length	Segment	Length	Segment	Length
0012	0723						
0252	0601						
0502	0903						
0752	0842						

Primary Route  
Interchange Exit  
Number

Secondary Route  
Interchange Exit  
Number

PennDOT Type 10 Map View:



Last Date Modified: Sep 11, 2024

County: 22

# RMS Interchange Information

Print Form

Interchange Number: 8009

Bureau of Maintenance & Operations  
Asset Management Division



Interchange Name: LINGLESTOWN & PAXTONIA INT

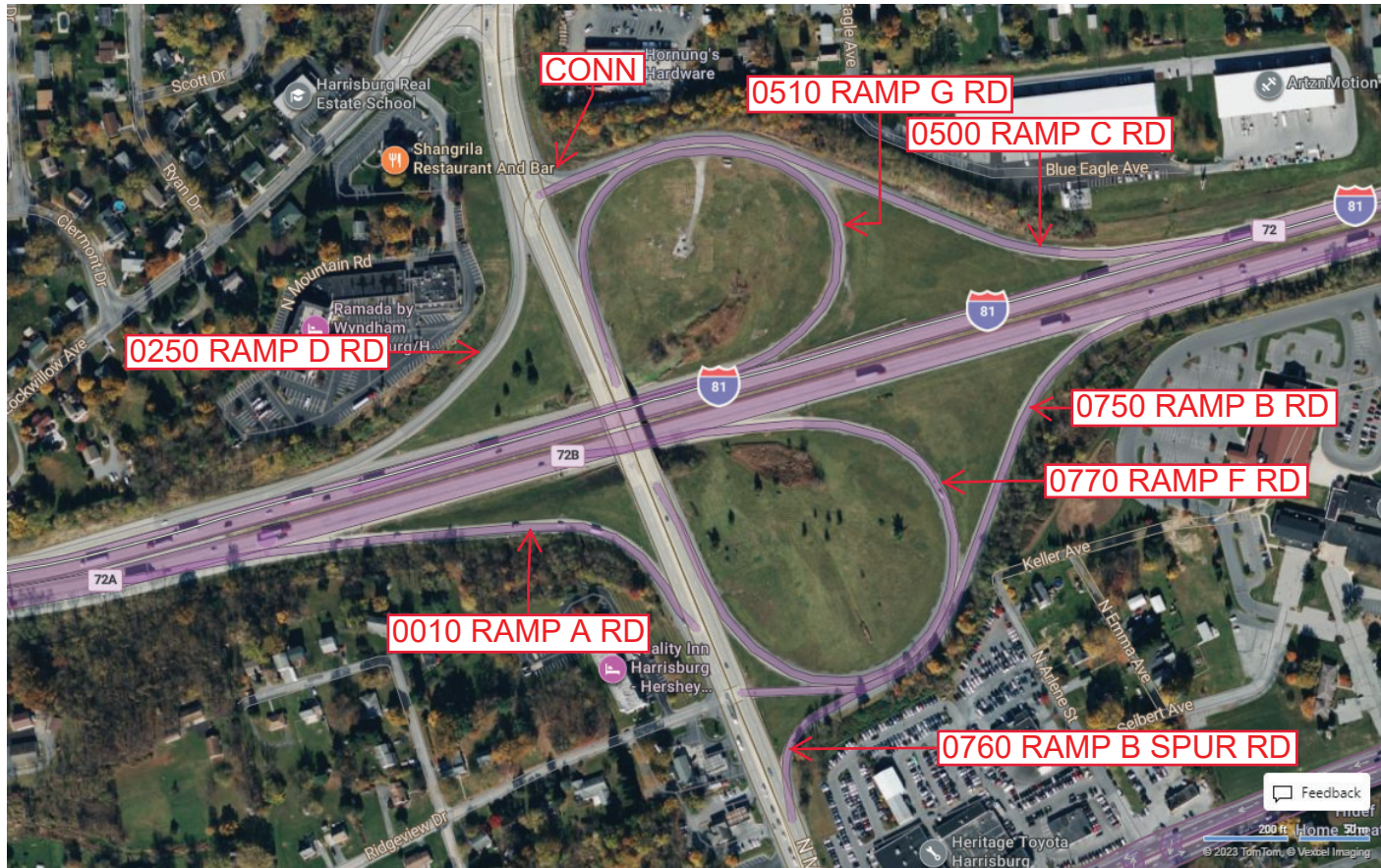
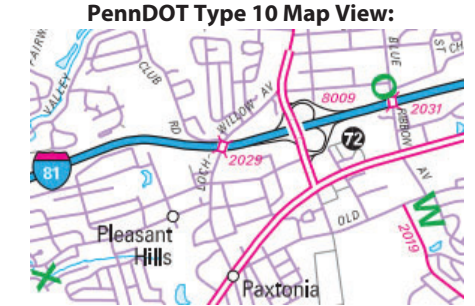
Intersecting SR's: I-81 & SR 3019 Mountain Rd

Ramp Segment Number and Ramp Segment Length Information:

Segment	Length	Segment	Length	Segment	Length	Segment	Length
0010	0824	0760	0229				
0250	1188	0770	1374				
0500	1489						
0510	2216						
0750	1354						

Primary Route Interchange Exit Number: 72

Secondary Route Interchange Exit Number



Last Date Modified:

Sep 10, 2024



County: 22

# RMS Interchange Information

Print Form

Bureau of Maintenance & Operations  
Asset Management Division



Interchange Number: 8010

Interchange Name: PEN-HAR INT

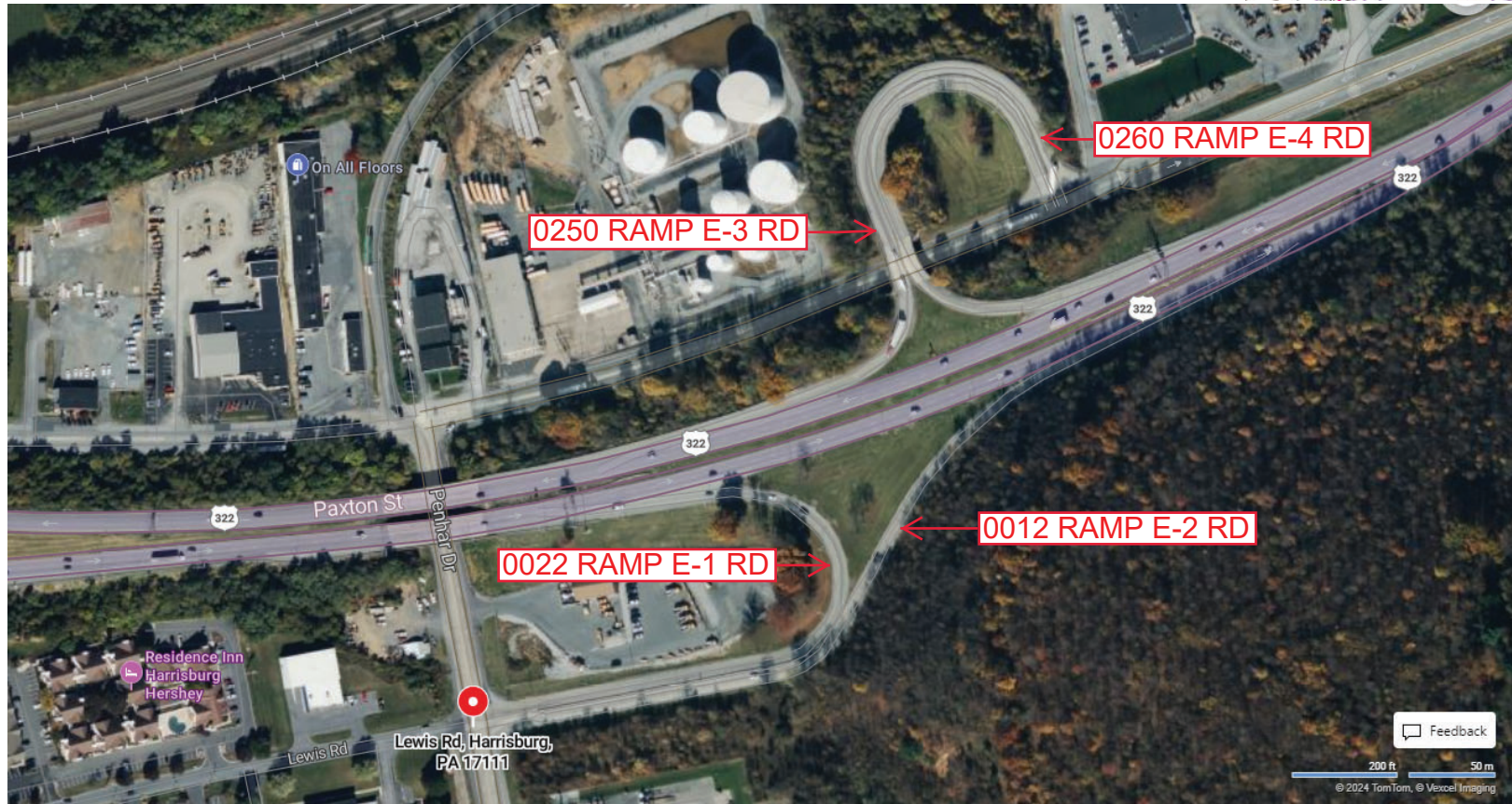
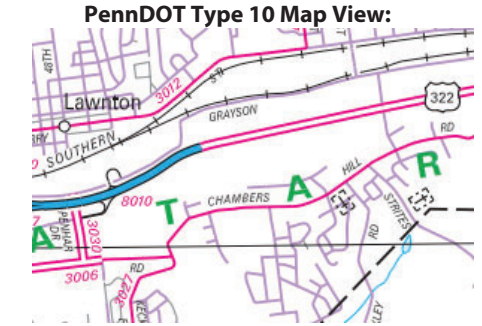
Intersecting SR's: US 322, SR 3030 Pen Har Dr & TWP Old Paxton St

Ramp Segment Number and Ramp Segment Length Information:

Segment	Length	Segment	Length	Segment	Length	Segment	Length
0012	1295						
0022	1111						
0250	1132						
0260	1054						

Primary Route Interchange Exit Number

Secondary Route Interchange Exit Number



Privacy Choices Consumer Health Privacy

Feedback  
200 ft 50 m  
© 2024 TomTom, © Vexcel Imaging

© 2024 Microsoft

Last Date Modified: Sep 11, 2024

County: 22

# RMS Interchange Information

Bureau of Maintenance & Operations  
Asset Management Division

Print Form



Interchange Number: 8011

Interchange Name: MANADA HILL INT

Intersecting SR's: I-81 & PA 39 Linglestown Rd

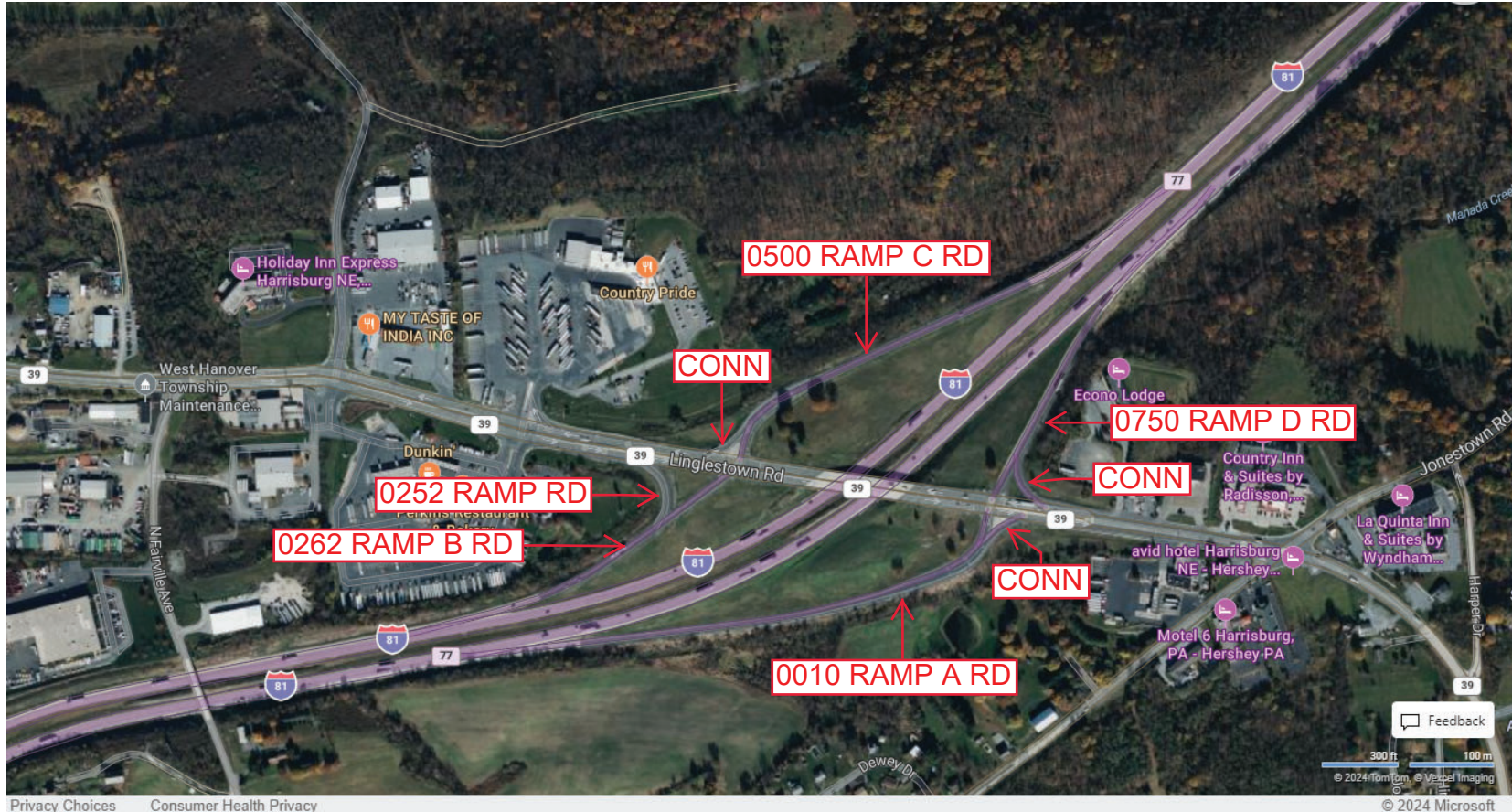
Ramp Segment Number and Ramp Segment Length Information:

Segment	Length	Segment	Length	Segment	Length	Segment	Length
0010	1918						
0252	0214						
0262	1024						
0500	1720						
0750	0915						

Primary Route Interchange Exit Number: 77

Secondary Route Interchange Exit Number

PennDOT Type 10 Map View:



Privacy Choices Consumer Health Privacy

Last Date Modified:

Sep 12, 2024

County: 22

# RMS Interchange Information

Bureau of Maintenance & Operations  
Asset Management Division

Print Form



Interchange Number: 8012

Interchange Name: HUMMELSTOWN WEST

Intersecting SR's: US 322, SR 2003 Middletown Rd & SR 2034 Frontage Rd

Ramp Segment Number and Ramp Segment Length Information:

Segment	Length	Segment	Length	Segment	Length	Segment	Length
0010	0728						
0250	0424						

Primary Route Interchange Exit Number

Secondary Route Interchange Exit Number

PennDOT Type 10 Map View:



Last Date Modified:

Sep 12, 2024

County: 22

# RMS Interchange Information

Print Form

Bureau of Maintenance & Operations  
Asset Management Division



Interchange Number: 8013

Interchange Name: GRANTVILLE INT

Intersecting SR's: I-81 & T525 Bow Creek Rd

Ramp Segment Number and Ramp Segment Length Information:

Segment	Length	Segment	Length	Segment	Length	Segment	Length
0010	1029						
0250	0734						
0500	1157						
0750	0707						

Primary Route Interchange Exit Number: 80

Secondary Route Interchange Exit Number

PennDOT Type 10 Map View:



Privacy Choices Consumer Health Privacy

Feedback

200 ft 50 m

© 2024 TomTom, © Vexcel Imaging

© 2024 Microsoft

Last Date Modified:

Sep 12, 2024

County: 22

# RMS Interchange Information

Bureau of Maintenance & Operations  
Asset Management Division

Print Form



Interchange Number: 8014

Interchange Name: HUMMELSTOWN EAST INT

Intersecting SR's: US 22 & SR 2005 Quarry Rd

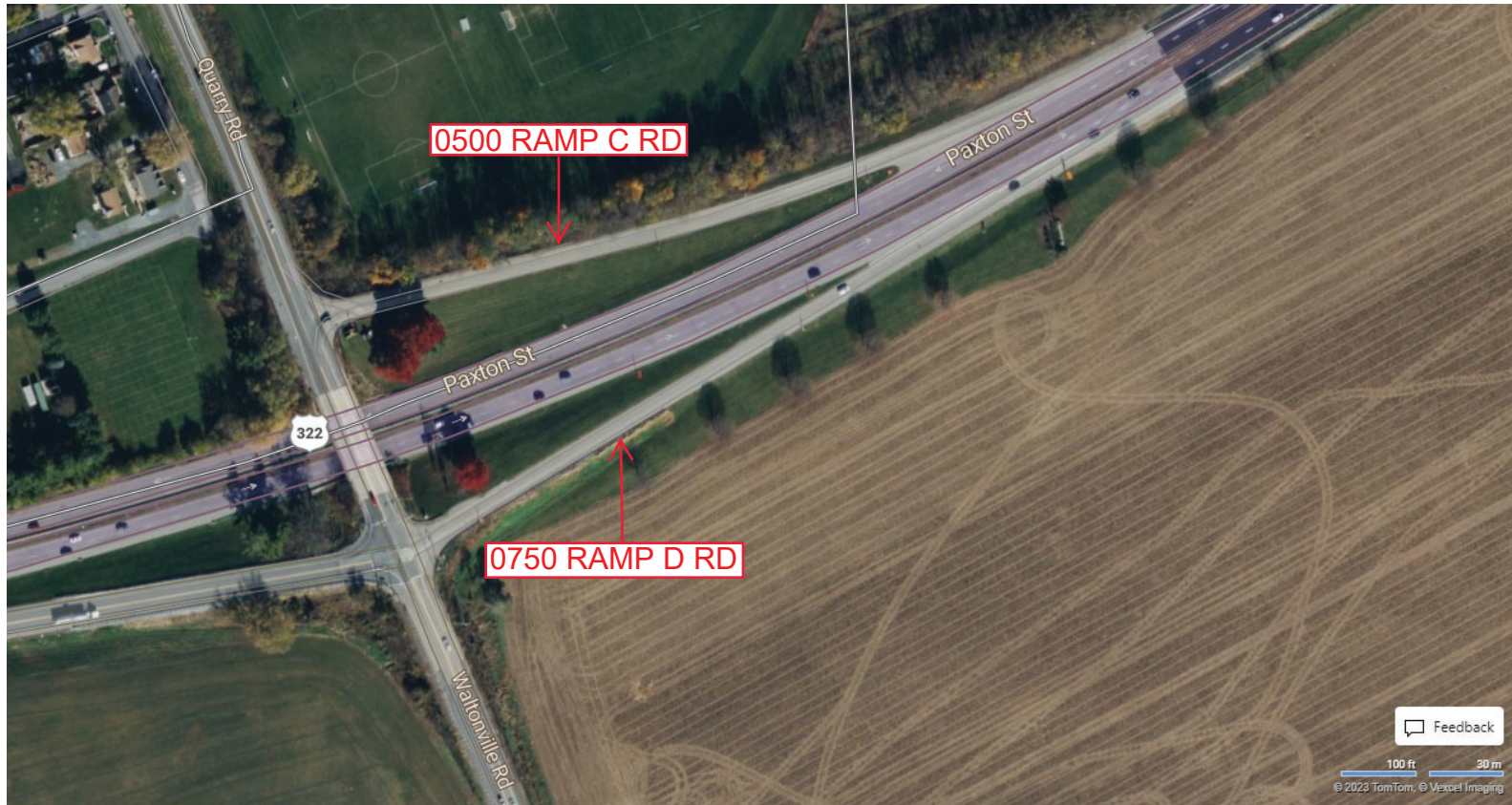
Ramp Segment Number and Ramp Segment Length Information:

Segment	Length	Segment	Length	Segment	Length	Segment	Length
0500	0812						
0750	0813						

Primary Route Interchange Exit Number

Secondary Route Interchange Exit Number

PennDOT Type 10 Map View:



Feedback

100 ft 30 m  
© 2023 TomTom, © Vexcel Imaging

© 2023 Microsoft

Last Date Modified:

Sep 10, 2024

County: 22

# RMS Interchange Information

Print Form

Bureau of Maintenance & Operations  
Asset Management Division



Interchange Number: 8015

Interchange Name: SECOND STREET INT

Intersecting SR's: I-83, CITY Front St & CITY Second St

Ramp Segment Number and Ramp Segment Length Information:

Segment	Length	Segment	Length	Segment	Length	Segment	Length
0010	3016						
0250	3233						
0260	0851						
0750	0830						

Primary Route Interchange Exit Number: 43

Secondary Route Interchange Exit Number

PennDOT Type 10 Map View:



Last Date Modified:

Sep 12, 2024

County: 22

# RMS Interchange Information

Bureau of Maintenance & Operations  
Asset Management Division

Print Form



Interchange Number: 8016

Interchange Name: HERSHEY PARK DRIVE INT

Intersecting SR's: US 322, US 422 & PA 39 Hershey Park Dr

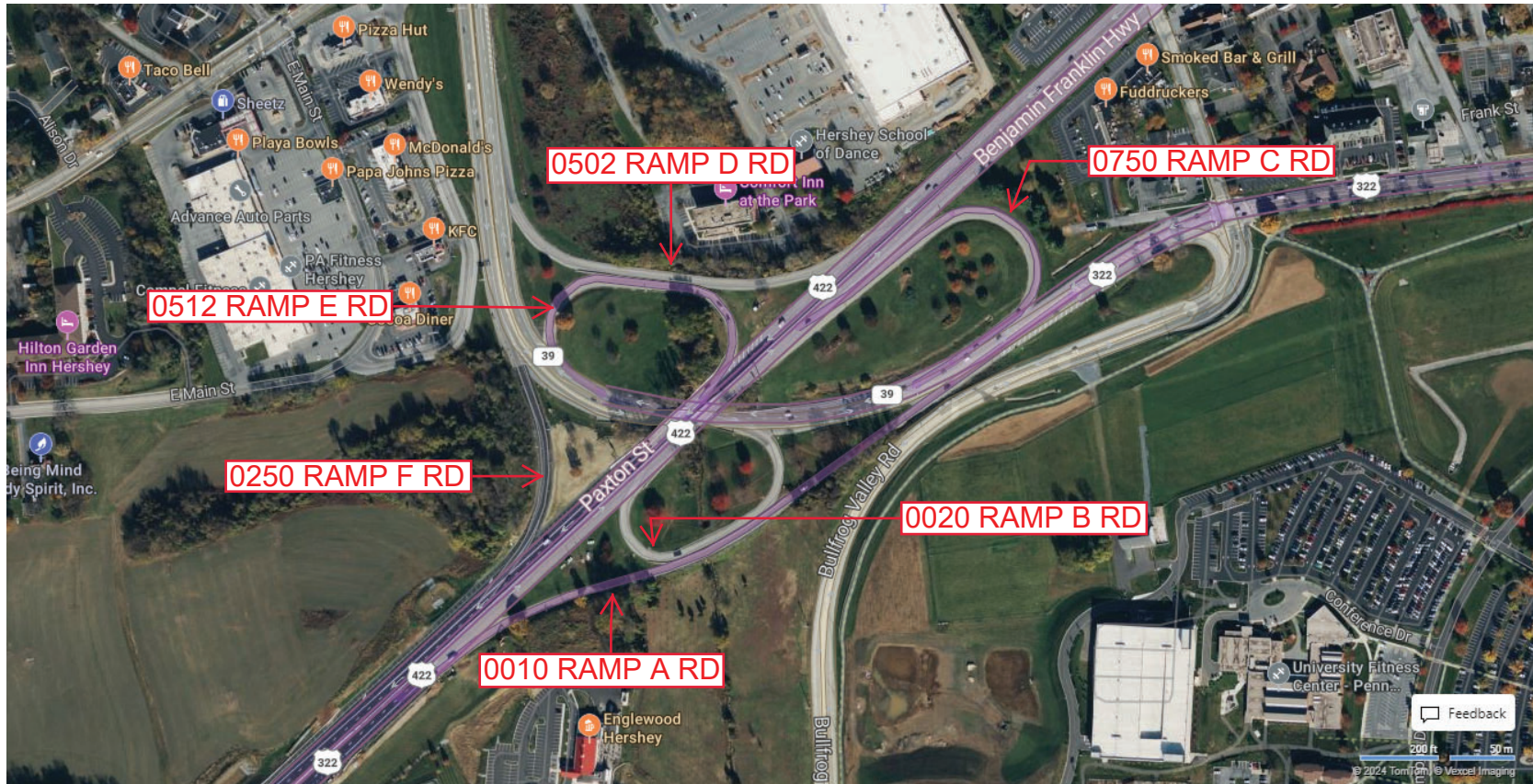
Ramp Segment Number and Ramp Segment Length Information:

Segment	Length	Segment	Length	Segment	Length	Segment	Length
0010	1231	0750	0468				
0020	0692						
0250	0421						
0502	0863						
0512	0693						

Primary Route Interchange Exit Number

Secondary Route Interchange Exit Number

PennDOT Type 10 Map View:



County: 22

# RMS Interchange Information

Bureau of Maintenance & Operations  
Asset Management Division

Print Form



Interchange Number: 8017

Interchange Name: 13TH STREET INT

Intersecting SR's: I-83 & CITY Thirteenth St

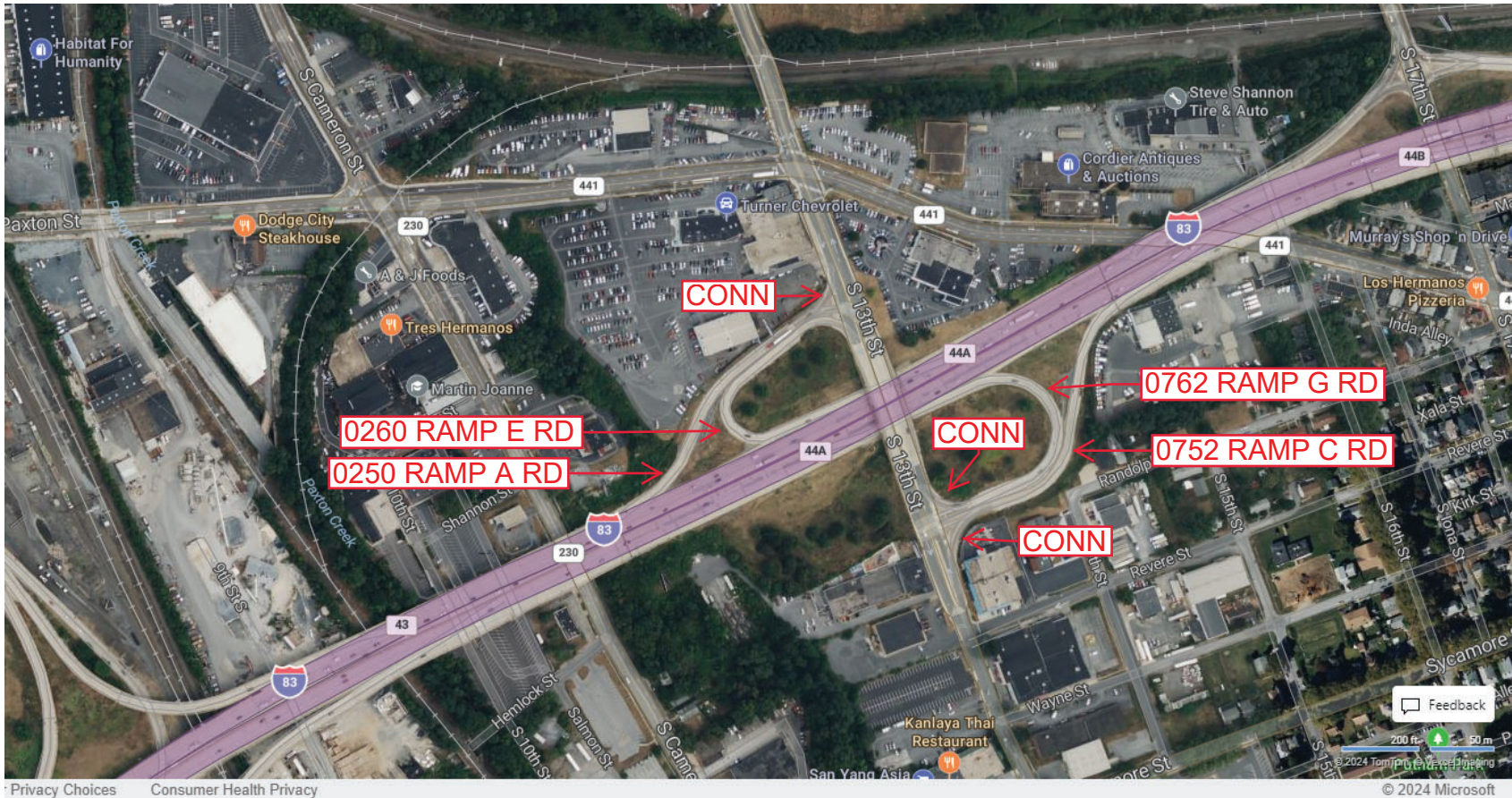
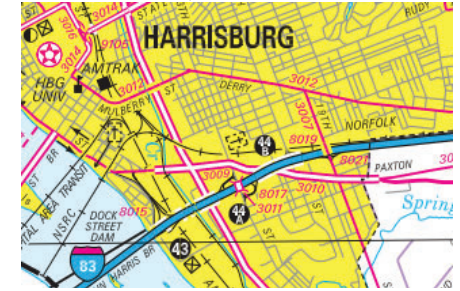
Ramp Segment Number and Ramp Segment Length Information:

Segment	Length	Segment	Length	Segment	Length	Segment	Length
0250	0698						
0260	0552						
0752	0787						
0762	0702						

Primary Route Interchange Exit Number: 44A

Secondary Route Interchange Exit Number

PennDOT Type 10 Map View:



Last Date Modified: Sep 12, 2024



County: 22

# RMS Interchange Information

Print Form

Interchange Number: 8018

Bureau of Maintenance & Operations  
Asset Management Division



Interchange Name: HBG INTL AIRPORT INT

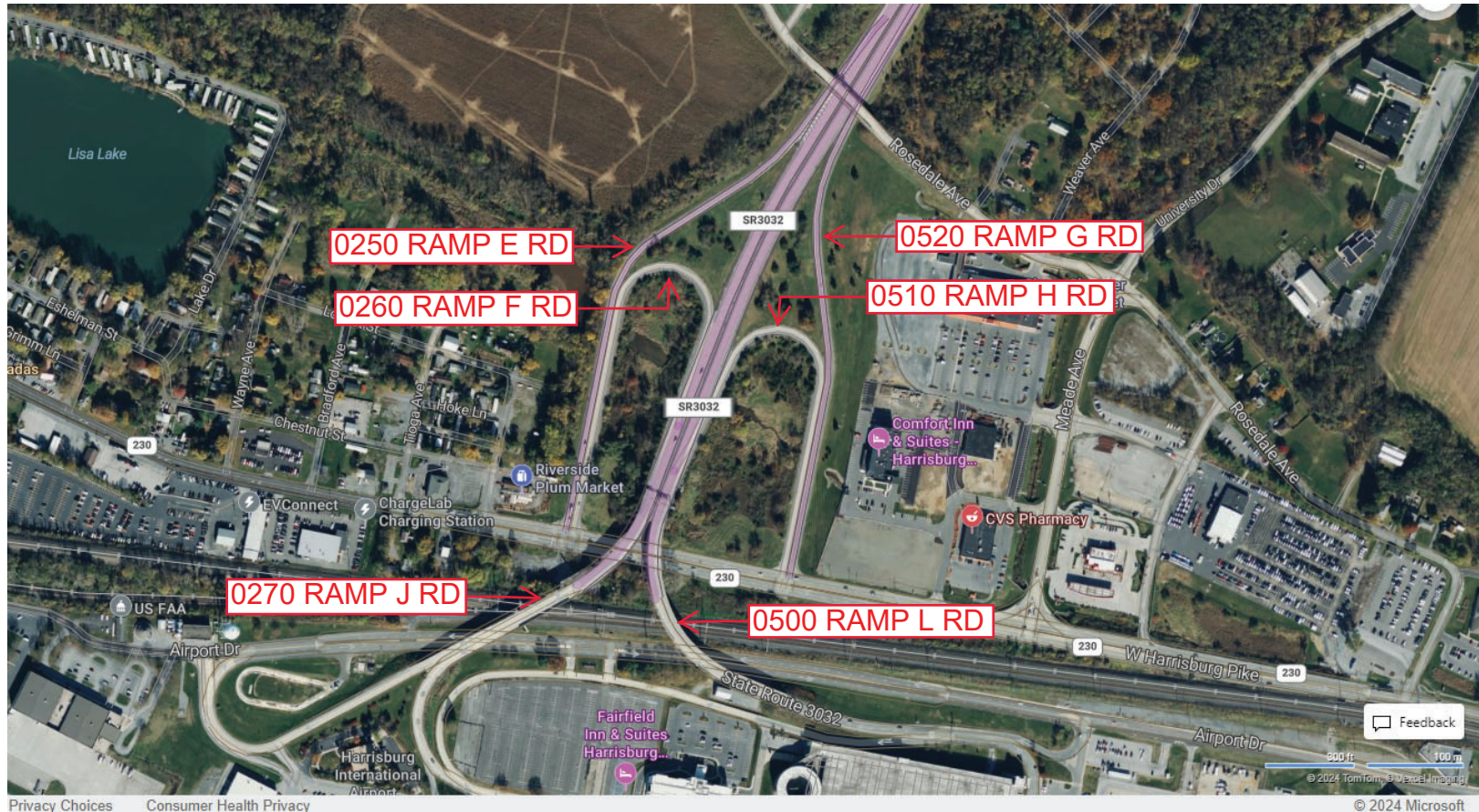
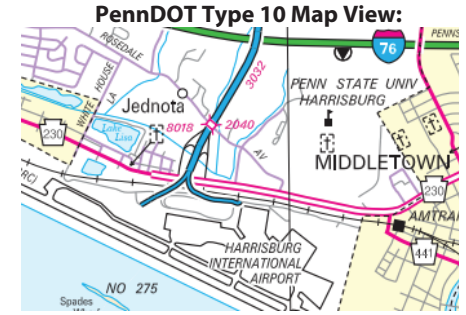
Intersecting SR's: PA 230 & SR 3032 Airport Connector

Ramp Segment Number and Ramp Segment Length Information:

Segment	Length	Segment	Length	Segment	Length	Segment	Length
0250	1632	0520	1461				
0260	1237						
0270	1949						
0500	1307						
0510	1090						

Primary Route Interchange Exit Number

Secondary Route Interchange Exit Number



County: 22

# RMS Interchange Information

Print Form

Bureau of Maintenance & Operations  
Asset Management Division



Interchange Number: 8019

Interchange Name: 17TH STREET INT

Intersecting SR's: I-83 & CITY Seventeenth St

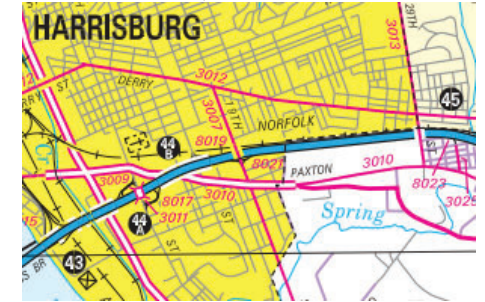
Ramp Segment Number and Ramp Segment Length Information:

Segment	Length	Segment	Length	Segment	Length	Segment	Length
0250	0376						
0500	0590						

Primary Route Interchange Exit Number: 44B

Secondary Route Interchange Exit Number

PennDOT Type 10 Map View:



Privacy Choices Consumer Health Privacy

© 2024 Microsoft

Last Date Modified: Sep 13, 2024

County: 22

# RMS Interchange Information

Print Form

Interchange Number: 8020

Bureau of Maintenance & Operations  
Asset Management Division



Interchange Name: HBG INTL AIRPORT

Intersecting SR's: PA 283, PA 441 & SR 3032 Airport Connector

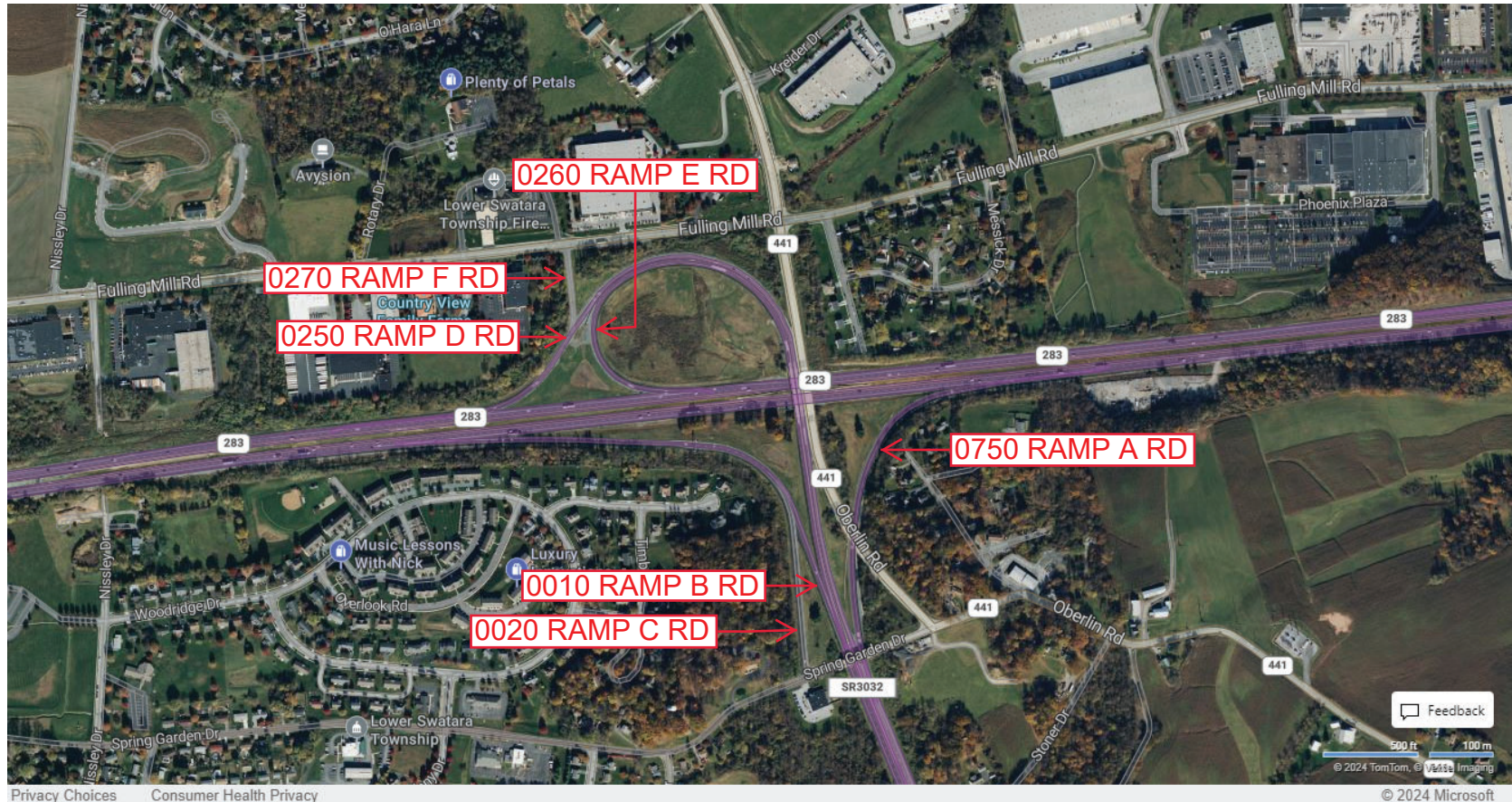
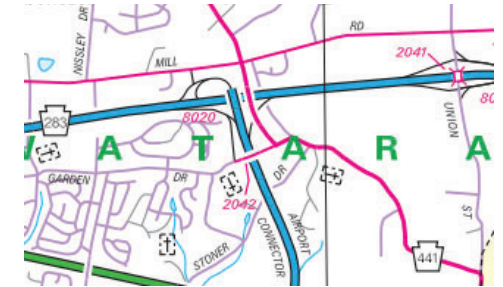
Ramp Segment Number and Ramp Segment Length Information:

Segment	Length	Segment	Length	Segment	Length	Segment	Length
0010	2014	0750	1555				
0020	0736						
0250	2240						
0260	1993						
0270	0402						

Primary Route Interchange Exit Number

Secondary Route Interchange Exit Number

PennDOT Type 10 Map View:



Last Date Modified:

Feb 19, 2025



County: 22

# RMS Interchange Information

Print Form

Bureau of Maintenance & Operations  
Asset Management Division



Interchange Number: 8022

Interchange Name: NORTH UNION STREET

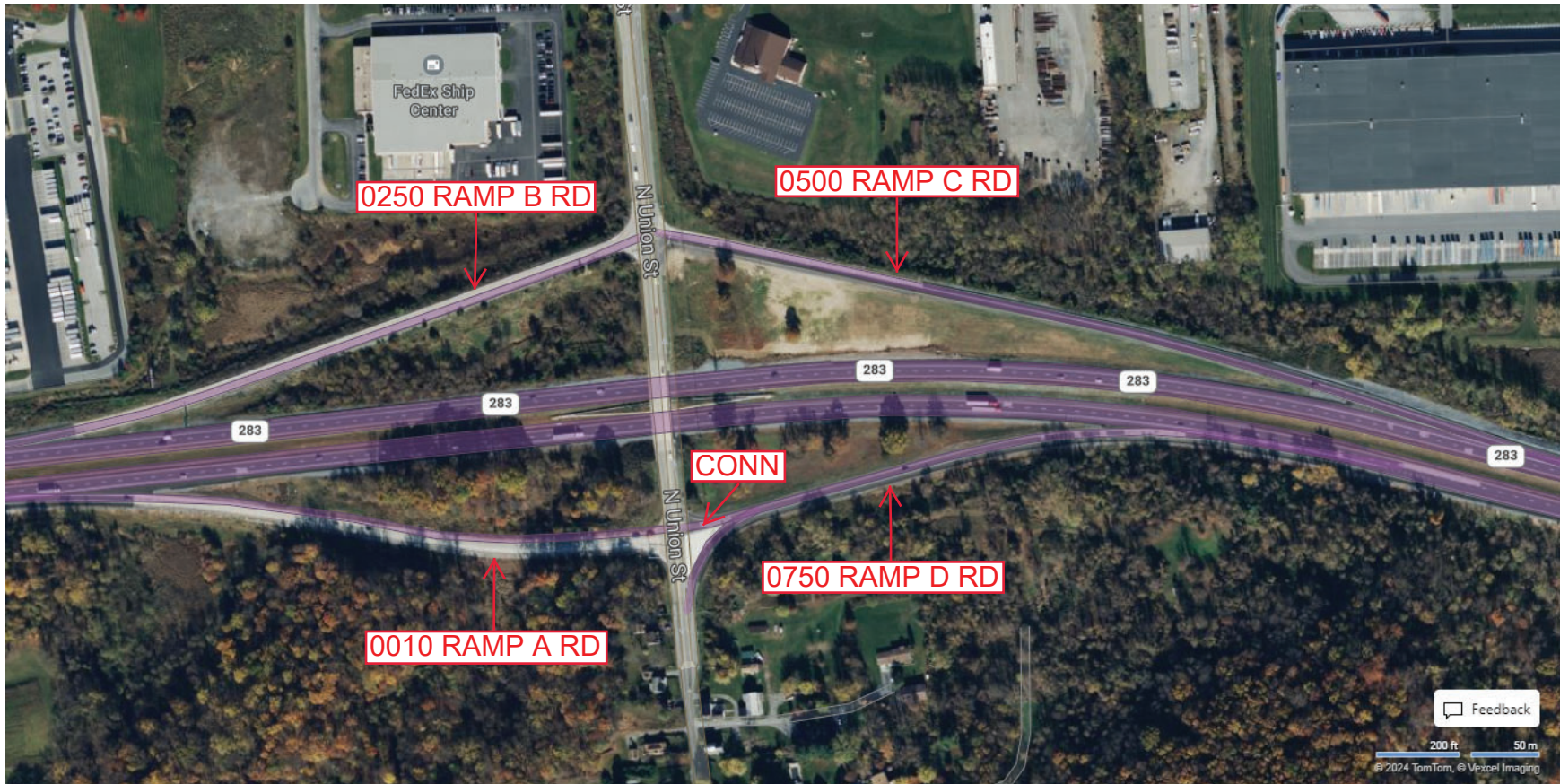
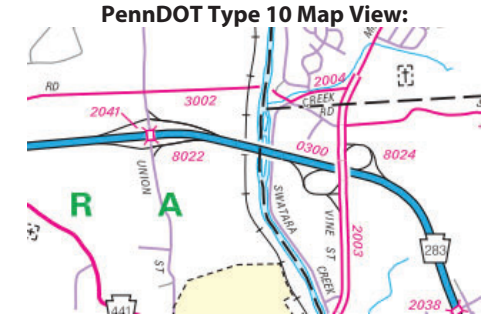
Intersecting SR's: PA 283 & T390 Union St

Ramp Segment Number and Ramp Segment Length Information:

Segment	Length	Segment	Length	Segment	Length	Segment	Length
0010	1271						
0250	1479						
0500	1752						
0750	1068						

Primary Route  
Interchange Exit  
Number

Secondary Route  
Interchange Exit  
Number



Feedback

200 ft 50 m

© 2024 TomTom, © Vexxel Imaging

© 2024 Microsoft

Privacy Choices Consumer Health Privacy

Last Date Modified: Sep 13, 2024

County: 22

# RMS Interchange Information

Print Form

Interchange Number: 8023

Bureau of Maintenance & Operations  
Asset Management Division



Interchange Name: 29TH STREET INT

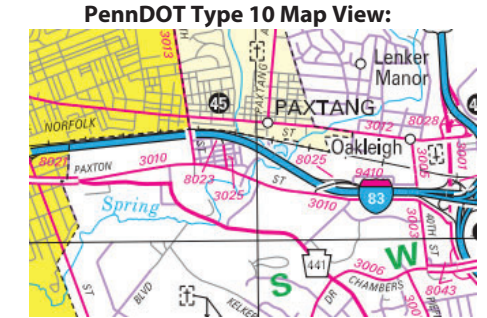
Intersecting SR's: I-83 & SR 3025 Thirtysecond St

Ramp Segment Number and Ramp Segment Length Information:

Segment	Length	Segment	Length	Segment	Length	Segment	Length
0010	0273						
0020	0577						

Primary Route Interchange Exit Number: 45

Secondary Route Interchange Exit Number



Last Date Modified: Sep 13, 2024

County: 22

# RMS Interchange Information

Print Form

Bureau of Maintenance & Operations  
Asset Management Division



Interchange Number: 8024

Interchange Name: MIDDLETOWN/HUMMELSTOWN INT

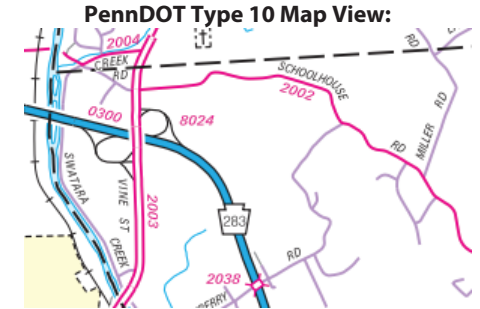
Intersecting SR's: PA 300, PA 283 & SR 2003 Vine St

Ramp Segment Number and Ramp Segment Length Information:

Segment	Length	Segment	Length	Segment	Length	Segment	Length
0010	1712	0512	1415				
0020	1574	0520	0177				
0030	0206	0530	0175				
0040	0179						
0502	1553						

Primary Route  
Interchange Exit  
Number

Secondary Route  
Interchange Exit  
Number



Last Date Modified:

Sep 16, 2024

County: 22

# RMS Interchange Information

Print Form

Interchange Number: 8025

Bureau of Maintenance & Operations  
Asset Management Division



Interchange Name: PAXTON STREET INT

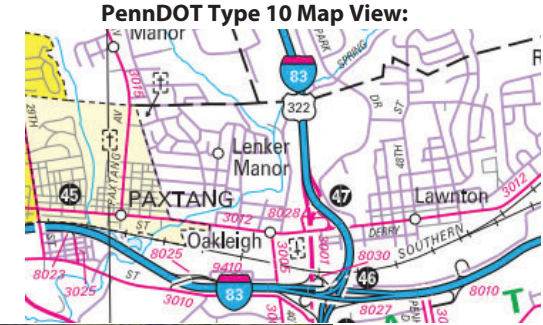
Intersecting SR's: I-83 & SR 9410 Paxton St

Ramp Segment Number and Ramp Segment Length Information:

Segment	Length	Segment	Length	Segment	Length	Segment	Length
0250	1013						
0500	0634						

Primary Route Interchange Exit Number: 45

Secondary Route Interchange Exit Number



Last Date Modified:

Sep 17, 2024



County: 22

# RMS Interchange Information

Print Form

Bureau of Maintenance & Operations  
Asset Management Division



Interchange Number: 8026

Interchange Name: TOLL HOUSE ROAD INT

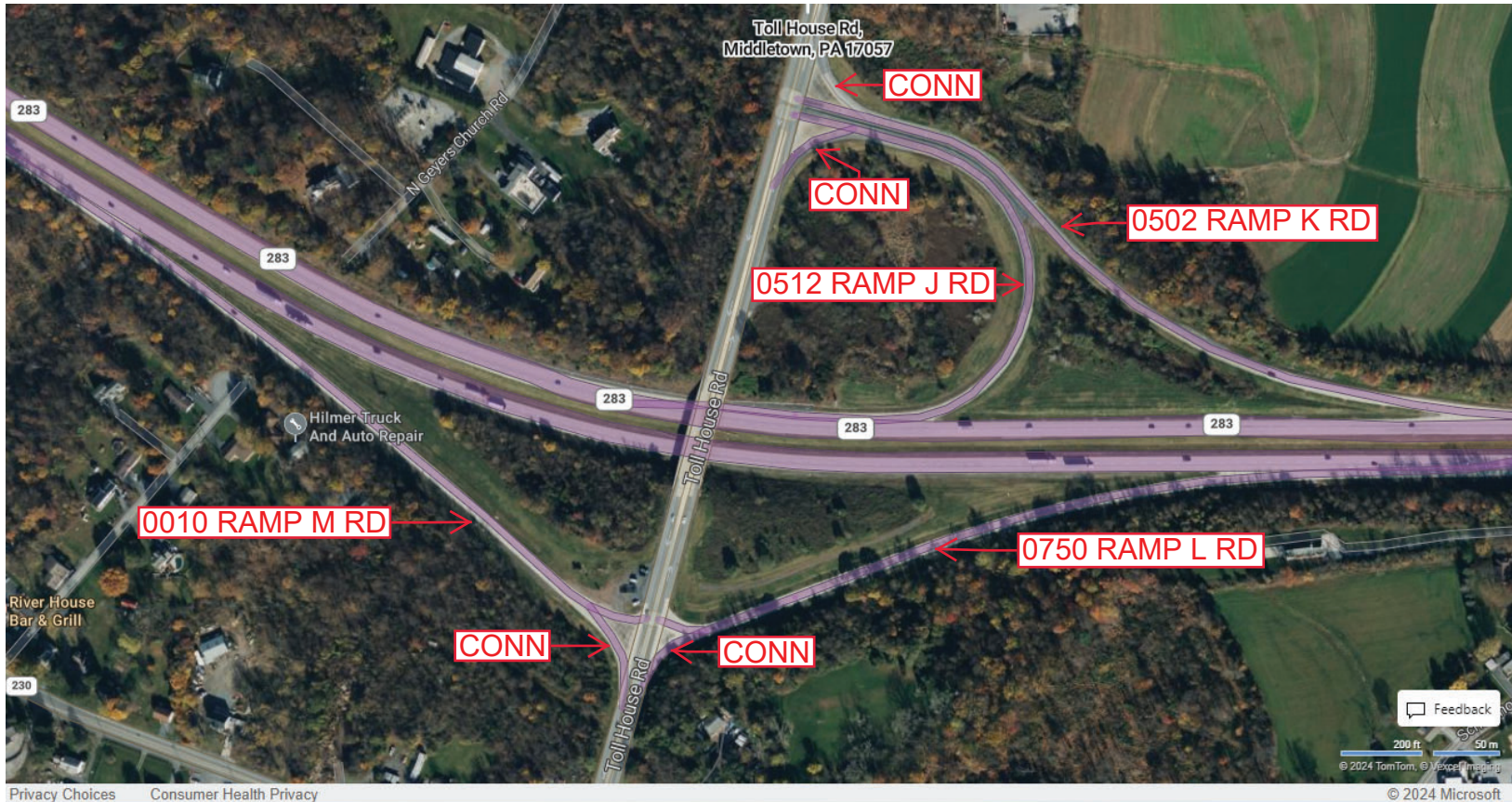
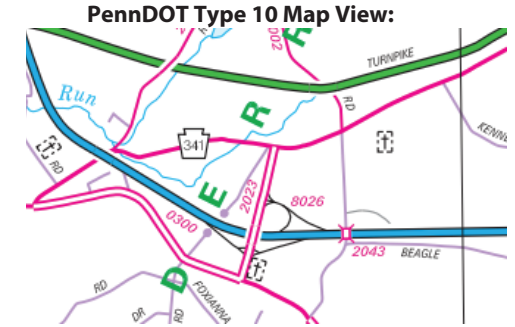
Intersecting SR's: PA 300 (PA 283) & SR 2023 Toll House Rd

Ramp Segment Number and Ramp Segment Length Information:

Segment	Length	Segment	Length	Segment	Length	Segment	Length
0010	1661						
0502	1830						
0512	1245						
0750	1469						

Primary Route Interchange Exit Number

Secondary Route Interchange Exit Number



Last Date Modified:

Sep 18, 2024

County: 22

# RMS Interchange Information

Print Form

Interchange Number: 8027

Bureau of Maintenance & Operations  
Asset Management Division



Interchange Name: EISENHOWER BLVD INT

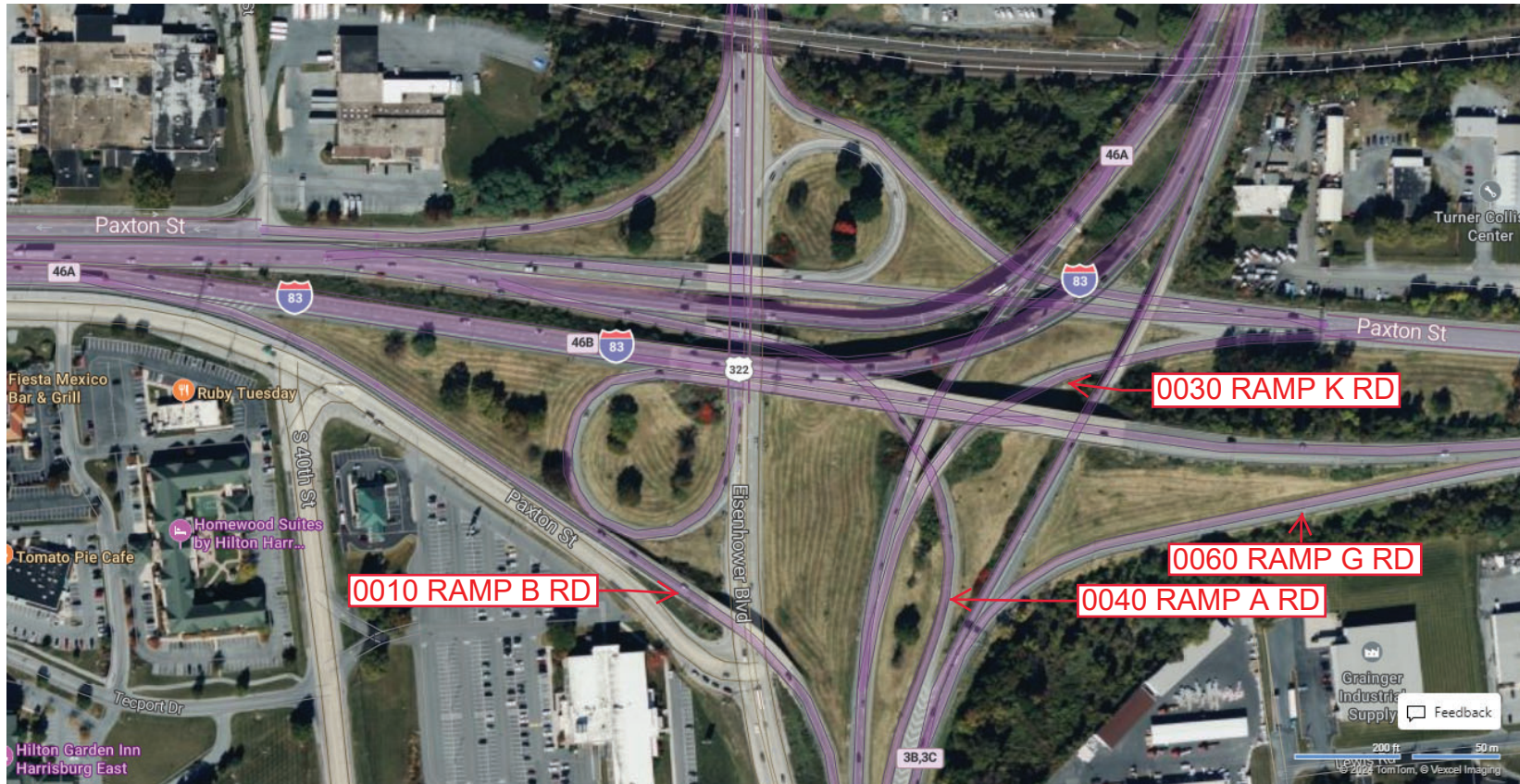
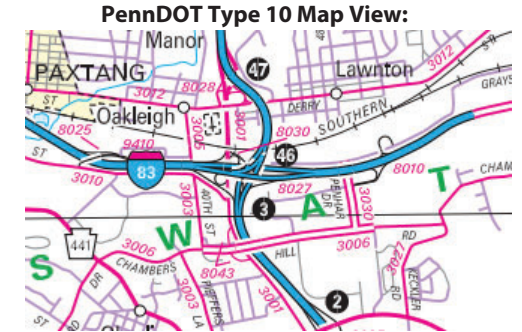
Intersecting SR's: I-83, I-283 & US 322 Paxton St

Ramp Segment Number and Ramp Segment Length Information:

Segment	Length	Segment	Length	Segment	Length	Segment	Length
0010	1546						
0030	0659						
0040	0946						
0060	1004						

Primary Route Interchange Exit Number: 46

Secondary Route Interchange Exit Number: 3C



Privacy Choices Consumer Health Privacy

© 2024 Microsoft

Last Date Modified:

Sep 18, 2024

County: 22

# RMS Interchange Information

Print Form

Interchange Number: 8028

Bureau of Maintenance & Operations  
Asset Management Division



Interchange Name: PAXTANG/DERRY STREET INT

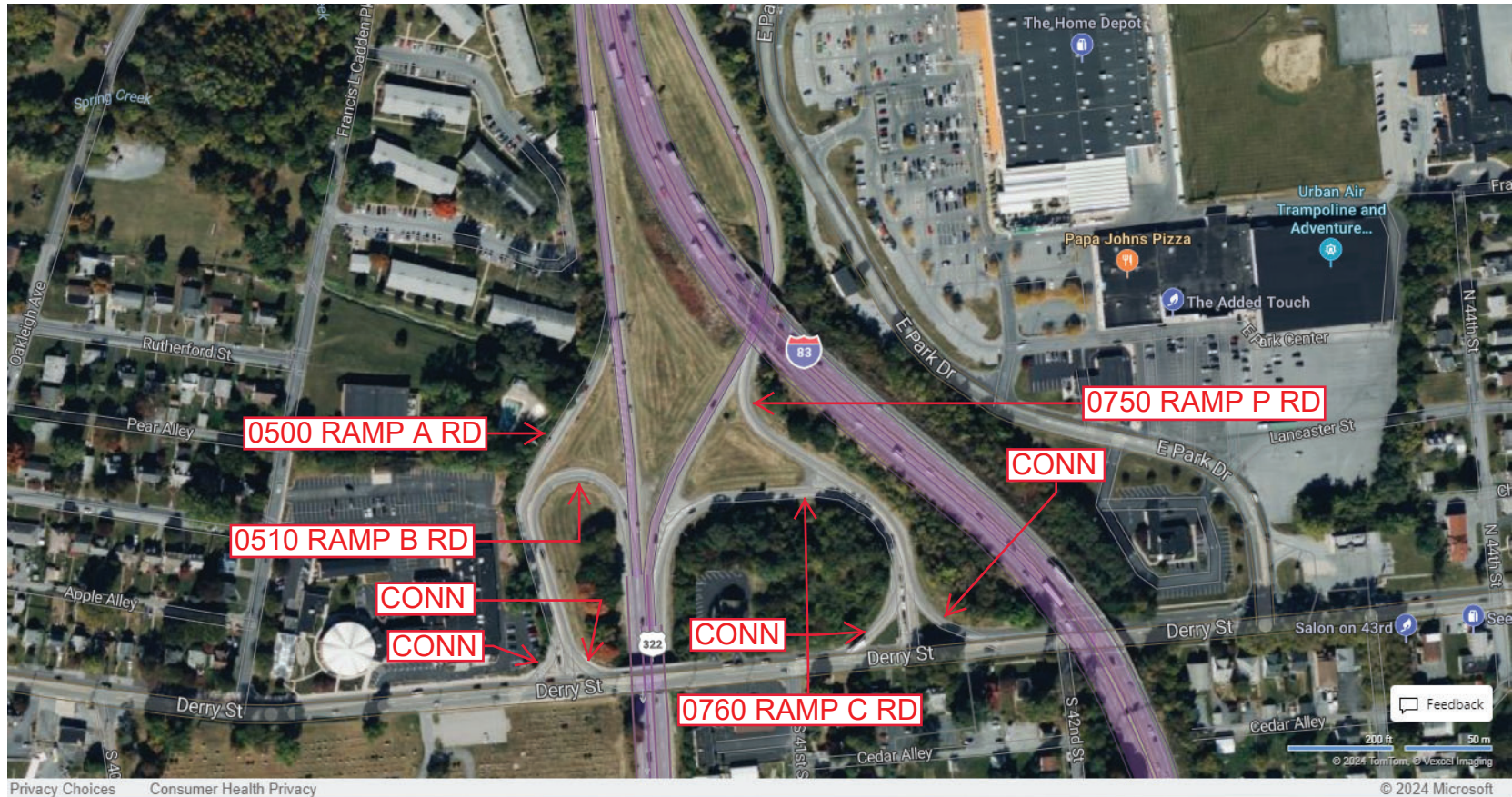
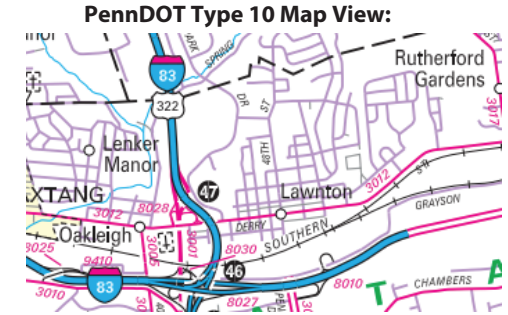
Intersecting SR's: SR 3001 Eisenhower Bl & SR 3012 Derry St

Ramp Segment Number and Ramp Segment Length Information:

Segment	Length	Segment	Length	Segment	Length	Segment	Length
0500	0691						
0510	0558						
0750	0647						
0760	0638						

Primary Route Interchange Exit Number: 47

Secondary Route Interchange Exit Number



Last Date Modified:

Sep 18, 2024

County: 22

# RMS Interchange Information

Print Form

Interchange Number: 8029

Bureau of Maintenance & Operations  
Asset Management Division



Interchange Name: UNION DEPOSIT INT

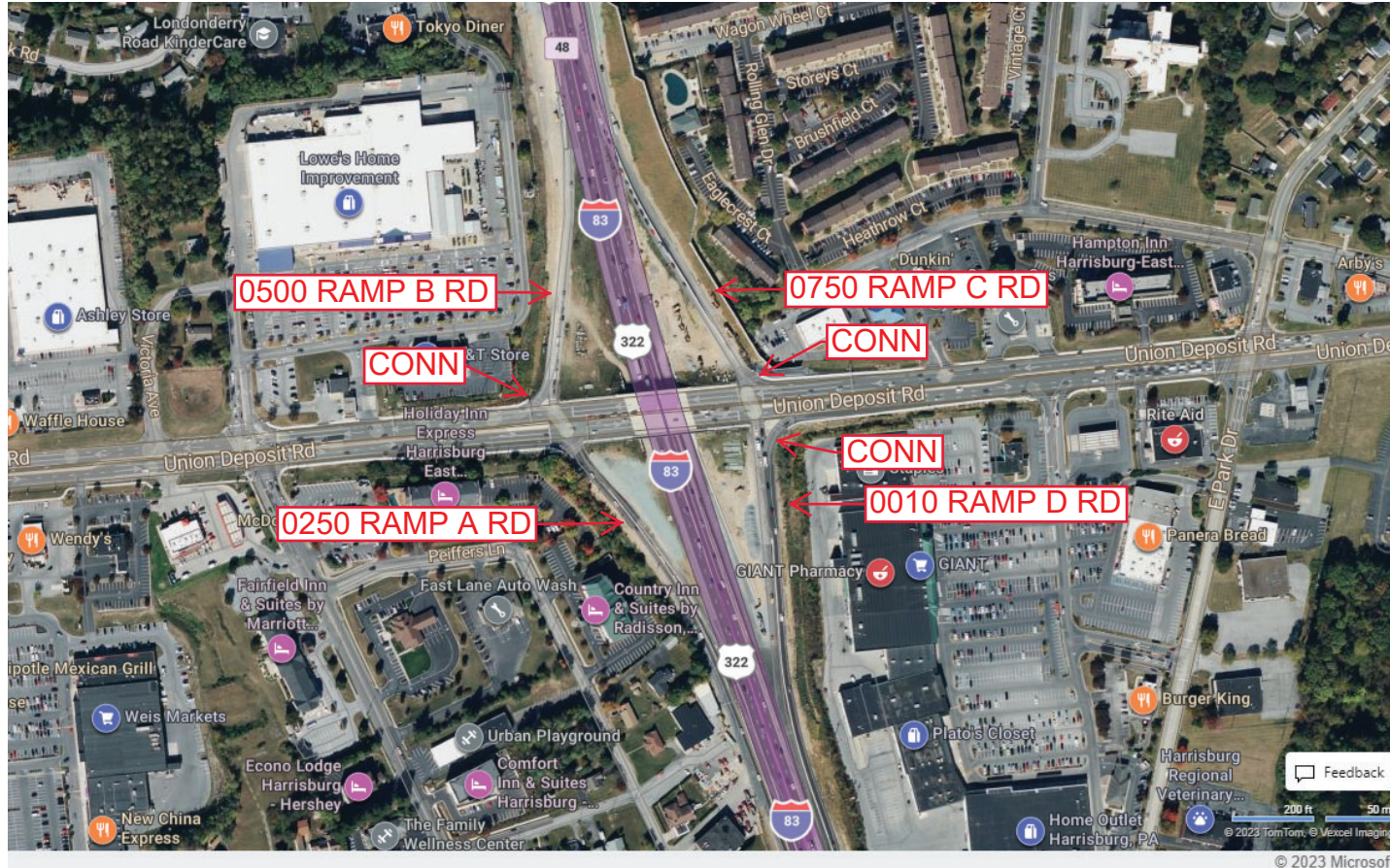
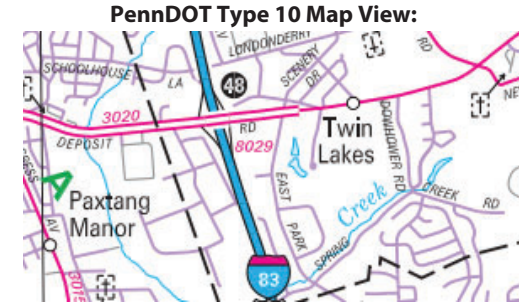
Intersecting SR's: I-83 & SR 3020 Union Deposit Rd

Ramp Segment Number and Ramp Segment Length Information:

Segment	Length	Segment	Length	Segment	Length	Segment	Length
0010	0551						
0250	0504						
0500	0496						
0750	0595						

Primary Route Interchange Exit Number: 48

Secondary Route Interchange Exit Number



Last Date Modified:

Jan 7, 2025

County: 22

# RMS Interchange Information

Print Form

Interchange Number: 8030

Bureau of Maintenance & Operations  
Asset Management Division



Interchange Name: EISENHOWER BLVD INT

Intersecting SR's: US 322 Paxton St & SR 3001 Eisenhower Blvd

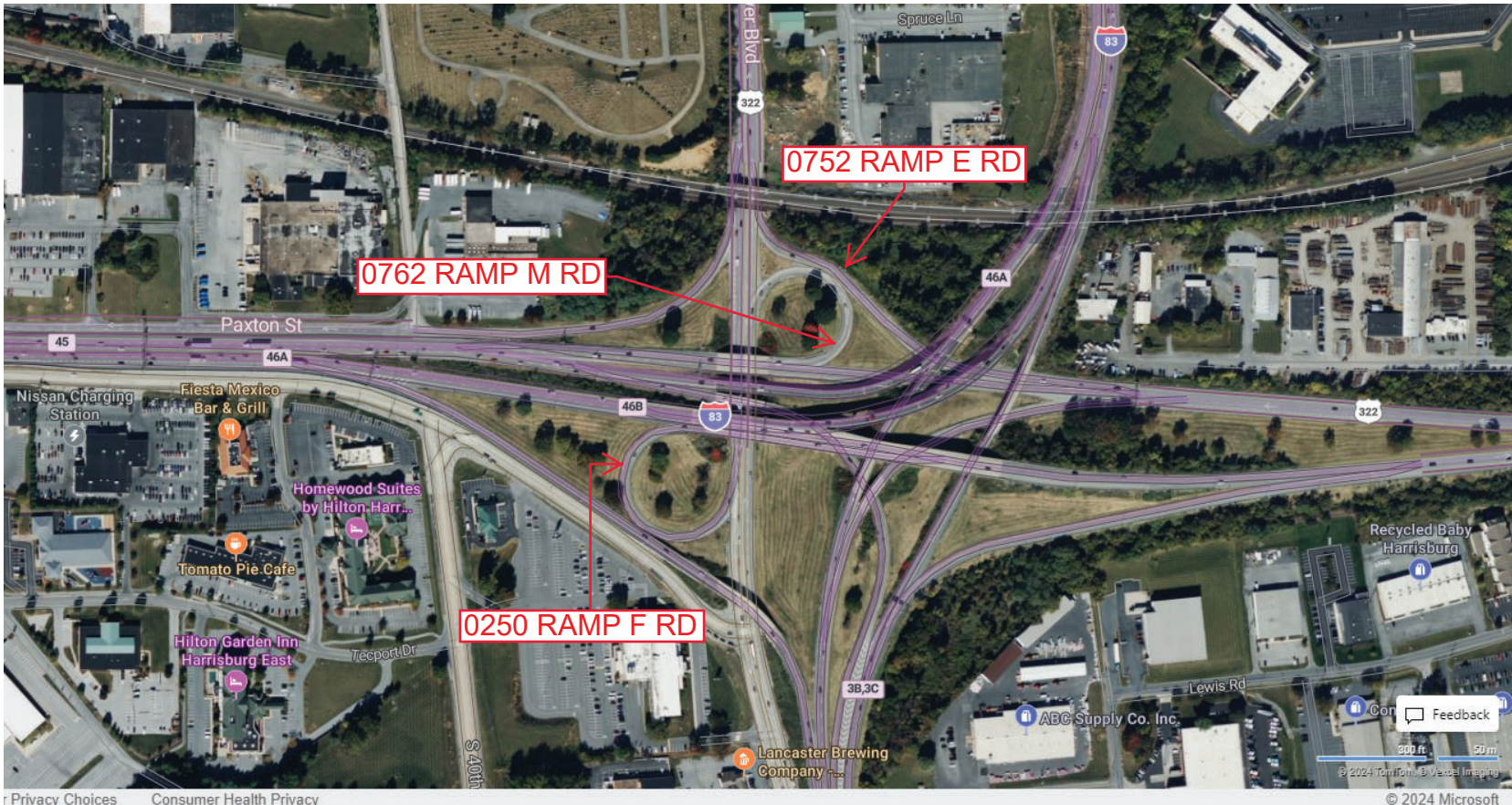
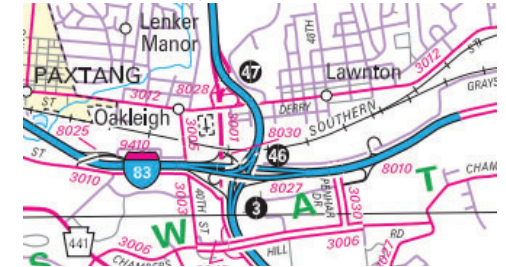
Ramp Segment Number and Ramp Segment Length Information:

Segment	Length	Segment	Length	Segment	Length	Segment	Length
0250	1534						
0752	0633						
0762	0472						

Primary Route Interchange Exit Number

Secondary Route Interchange Exit Number

PennDOT Type 10 Map View:



Privacy Choices Consumer Health Privacy

© 2024 Microsoft

Last Date Modified:

Sep 18, 2024

County: 22

# RMS Interchange Information

Print Form

Interchange Number: 8031

Bureau of Maintenance & Operations  
Asset Management Division



Interchange Name: COLONIAL PARK INT

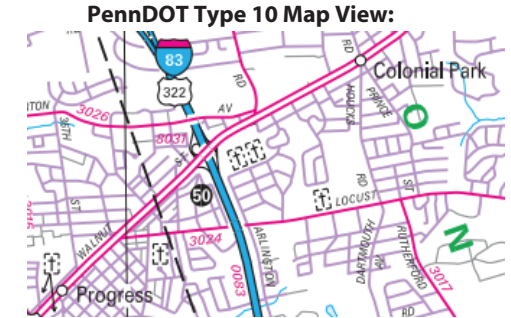
Intersecting SR's: I-83 & US 22 Jonestown Rd

Ramp Segment Number and Ramp Segment Length Information:

Segment	Length	Segment	Length	Segment	Length	Segment	Length
0010	0863	0750	0558				
0030	1379						
0250	0655						
0500	0890						
0510	0636						

Primary Route Interchange Exit Number: 50A

Secondary Route Interchange Exit Number: 50B



Last Date Modified:

Sep 19, 2024

County: 22

# RMS Interchange Information

Print Form

Bureau of Maintenance & Operations  
Asset Management Division



Interchange Number: 8033

Interchange Name: PA 300/I-283

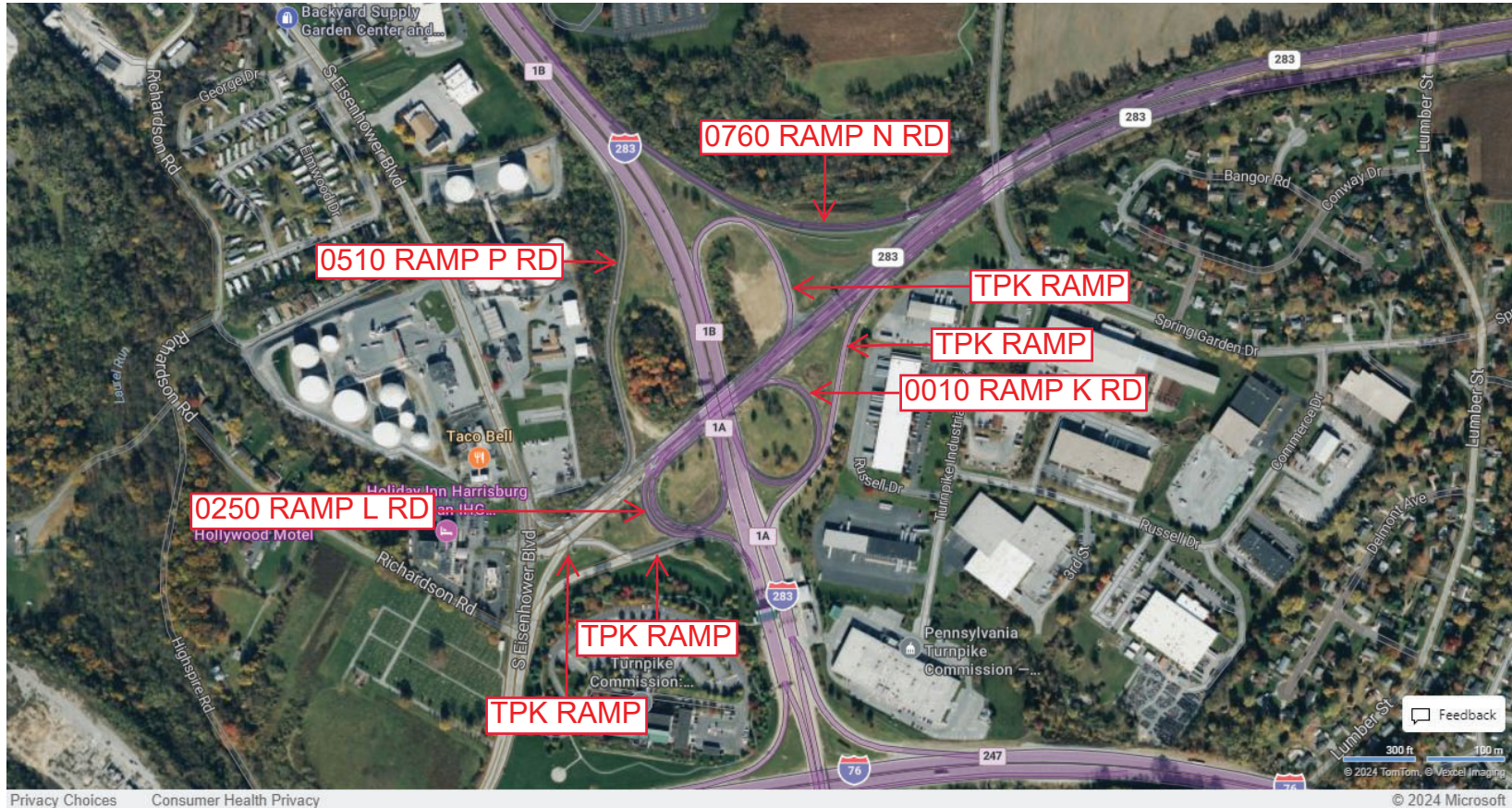
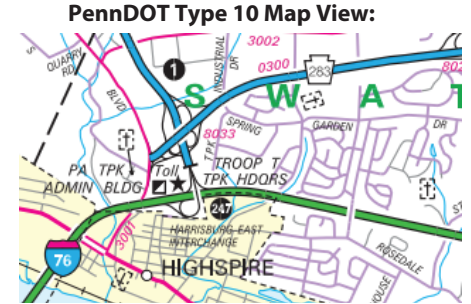
Intersecting SR's: I-283 & PA 300

Ramp Segment Number and Ramp Segment Length Information:

Segment	Length	Segment	Length	Segment	Length	Segment	Length
0010	0780						
0250	0464						
0510	1306						
0760	1355						

Primary Route Interchange Exit Number: 1A

Secondary Route Interchange Exit Number: 1B



Last Date Modified: Sep 19, 2024

County: 22

# RMS Interchange Information

Print Form

Bureau of Maintenance & Operations  
Asset Management Division



Interchange Number: 8035

Interchange Name: CHAMBERS HILL ROAD INT

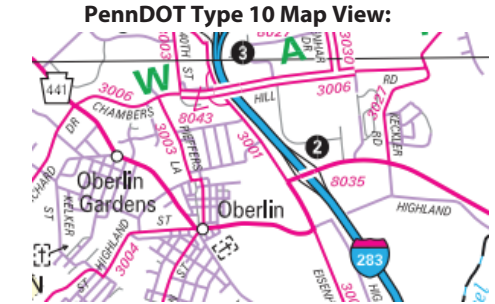
Intersecting SR's: I-283 & PA 441 Lindle Rd

Ramp Segment Number and Ramp Segment Length Information:

Segment	Length	Segment	Length	Segment	Length	Segment	Length
0010	0874						
0250	0852						
0500	0913						
0750	1077						

Primary Route Interchange Exit Number: 2

Secondary Route Interchange Exit Number

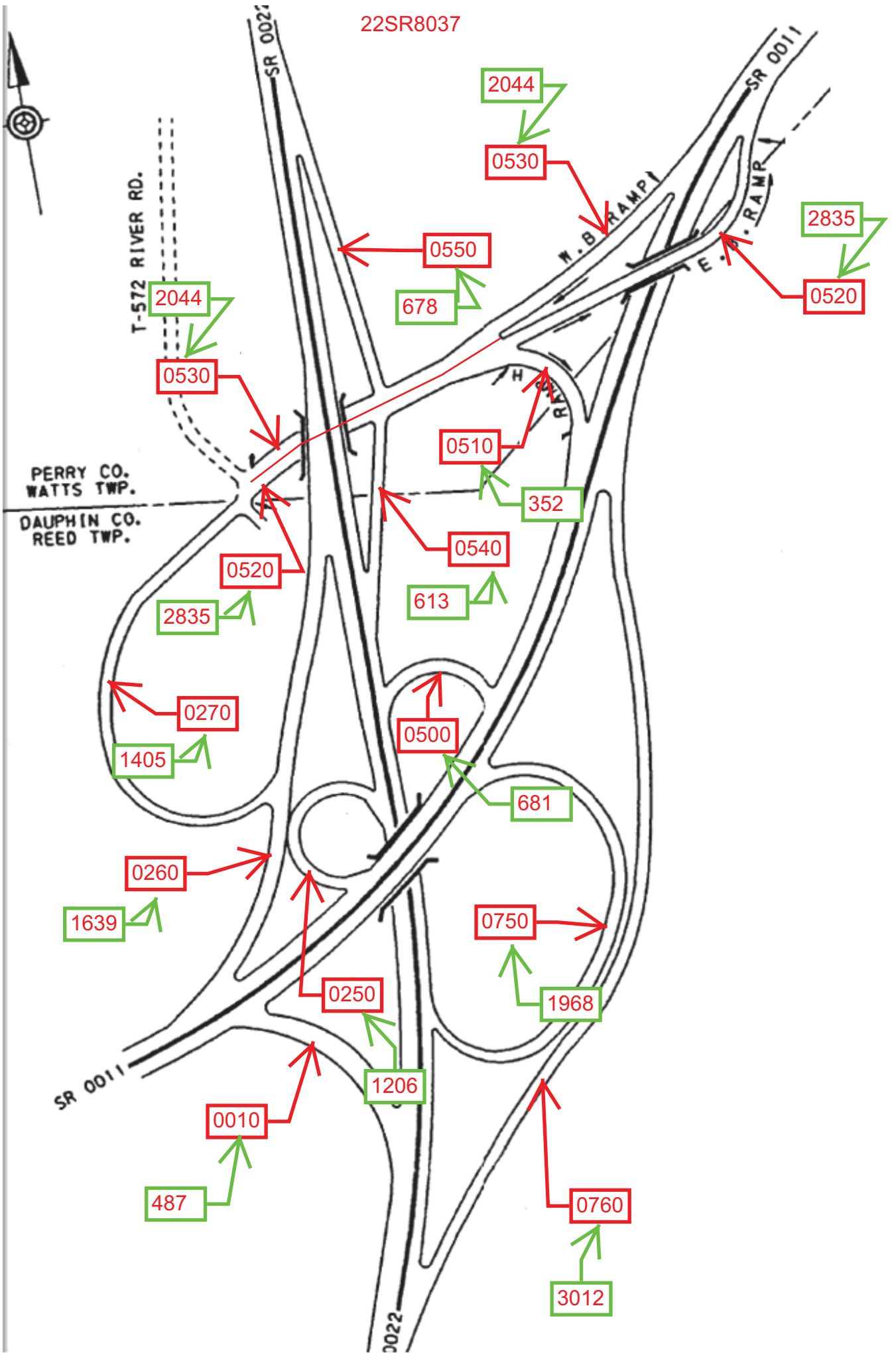


Last Date Modified:

Sep 19, 2024



22SR8037



PERRY CO.  
WATTS TWP.  
DAUPHIN CO.  
REED TWP.

T-572 RIVER RD.

SR 0021

SR 0011

SR 0011

0022

M.B. RAMPI

E. RAMPI

2044

2044

2835

0530

0530

0520

678

0510

352

0520

0540

2835

613

0270

0500

1405

681

0260

1639

0750

0250

1968

SR 0011

1206

0010

487

0760

3012

County: 22

# RMS Interchange Information

Print Form

Interchange Number: 8037

Bureau of Maintenance & Operations  
Asset Management Division



Interchange Name: AMITY HALL US 22/US11

Intersecting SR's: US 11 Susquehanna Tr & US 22 28th Division Hw

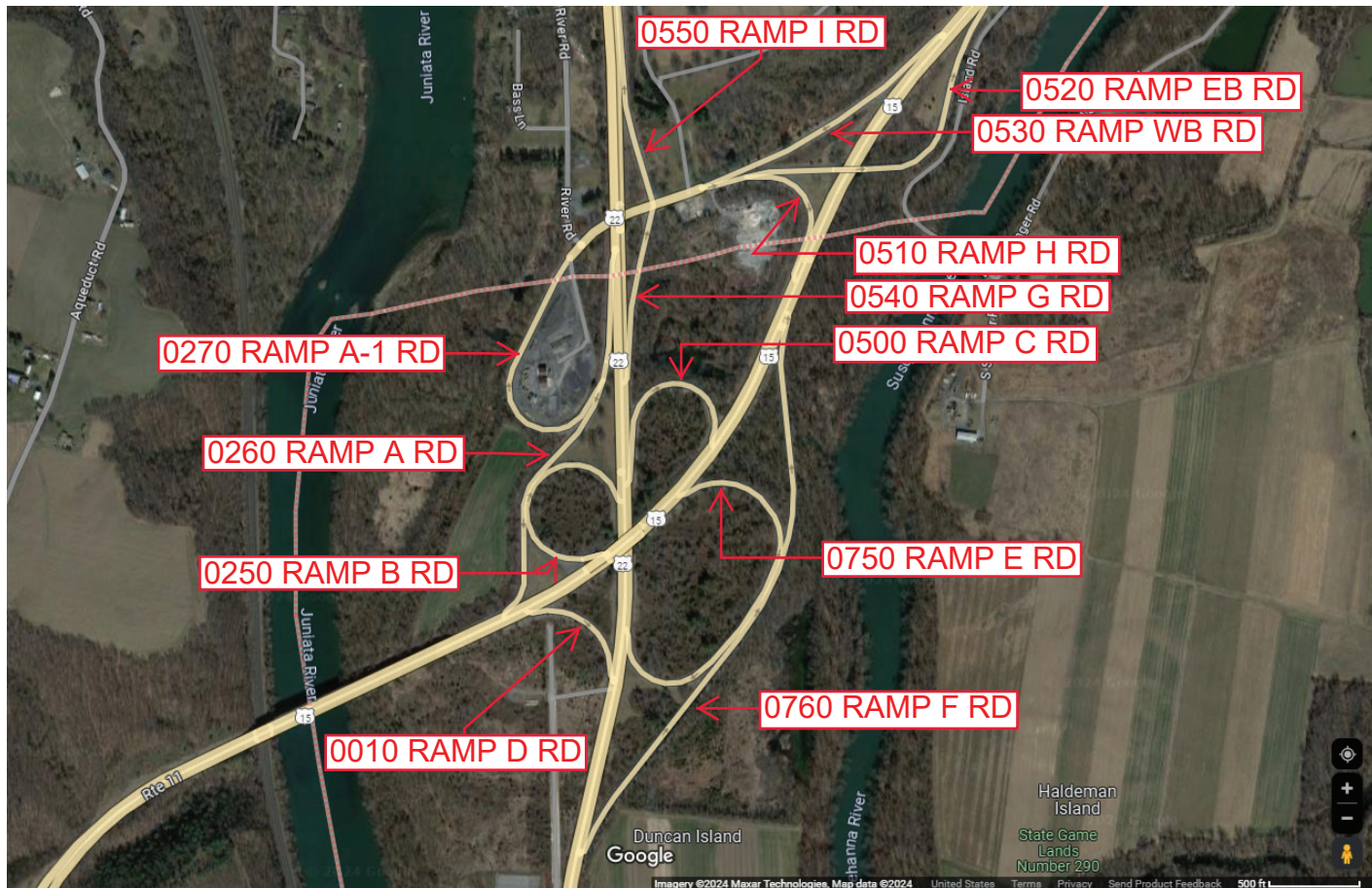
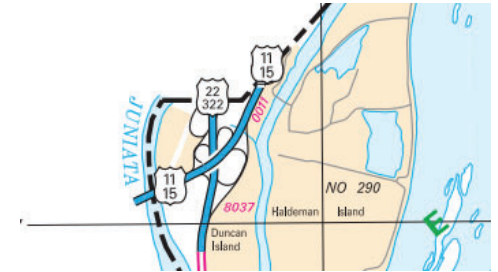
Ramp Segment Number and Ramp Segment Length Information:

Segment	Length	Segment	Length	Segment	Length	Segment	Length
0010	0463	0510	0352	0750	2003		
0250	1206	0520	2835	0760	3012		
0260	1639	0530	2044				
0270	1405	0540	0613				
0500	0706	0550	0678				

Primary Route Interchange Exit Number

Secondary Route Interchange Exit Number

PennDOT Type 10 Map View:



Last Date Modified:

Sep 20, 2024

County: 22

# RMS Interchange Information

Print Form

Interchange Number: 8043

Bureau of Maintenance & Operations  
Asset Management Division



Interchange Name: CHAMBERS HILL ROAD INT

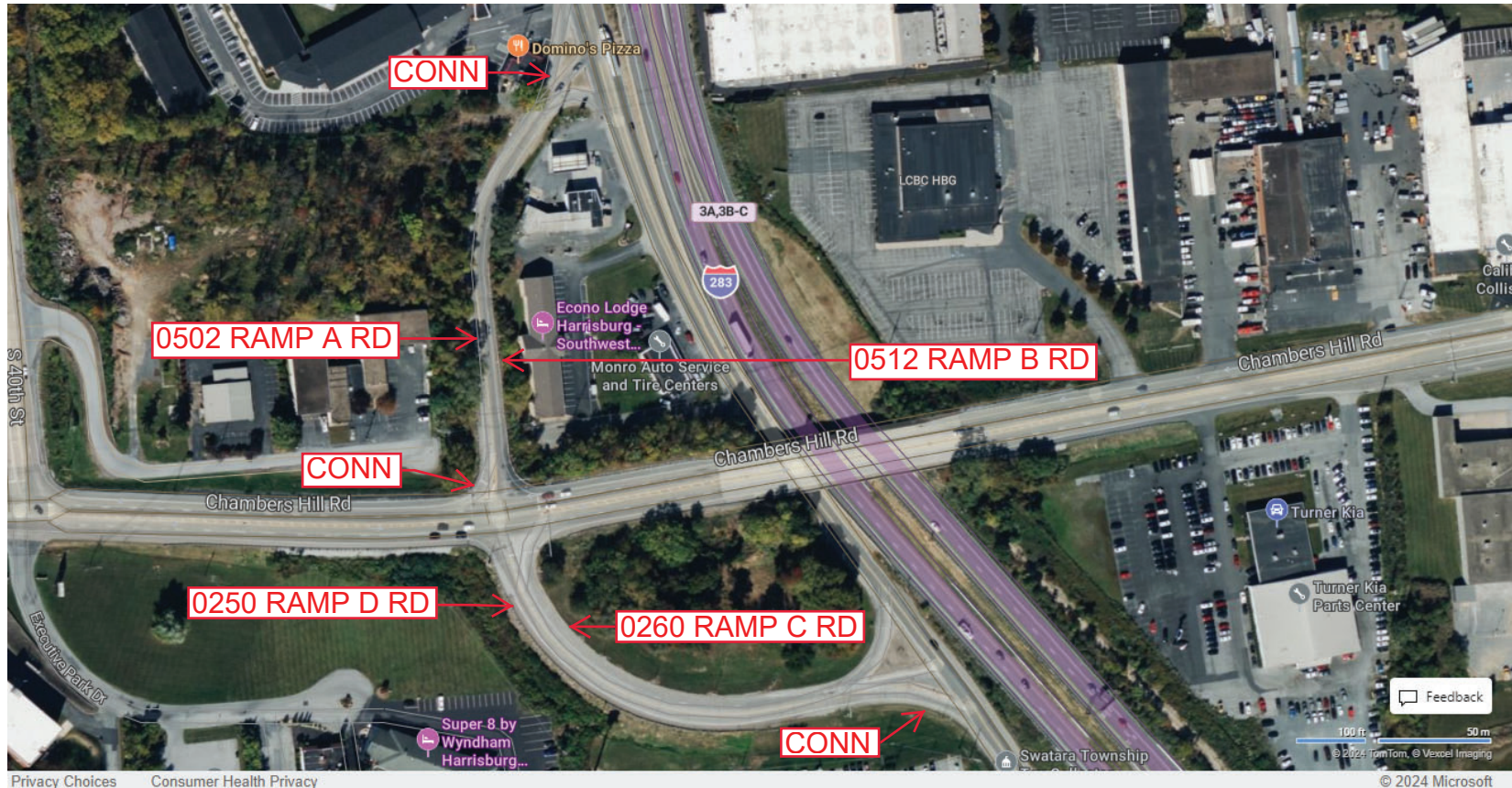
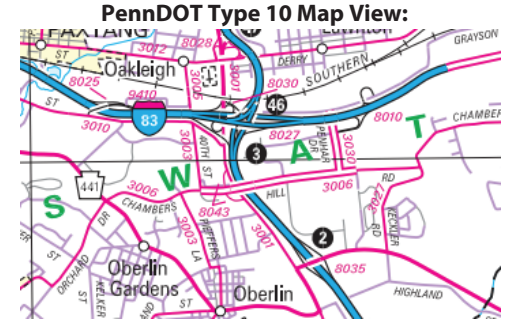
Intersecting SR's: SR 3001 Eisenhower Bl & SR 3006 Chambers Hill Rd

Ramp Segment Number and Ramp Segment Length Information:

Segment	Length	Segment	Length	Segment	Length	Segment	Length
0250	0799						
0260	0746						
0502	0715						
0512	0662						

Primary Route  
Interchange Exit  
Number

Secondary Route  
Interchange Exit  
Number



Last Date Modified:

Sep 20, 2024

County: 22

# RMS Interchange Information

Print Form

Interchange Number: 8044

Bureau of Maintenance & Operations  
Asset Management Division



Interchange Name: MOUNTAIN ROAD INT

Intersecting SR's: US 22 William Penn Hw & PA 325 Mountain Rd

Ramp Segment Number and Ramp Segment Length Information:

Segment	Length	Segment	Length	Segment	Length	Segment	Length
0010	0373						
0250	0632						
0500	0591						
0750	0605						

Primary Route  
Interchange Exit  
Number

Secondary Route  
Interchange Exit  
Number

PennDOT Type 10 Map View:



Privacy Choices Consumer Health Privacy

© 2024 Microsoft

Last Date Modified:

Sep 20, 2024

County: 22

# RMS Interchange Information

Print Form

Bureau of Maintenance & Operations  
Asset Management Division



Interchange Number: 8045

Interchange Name: HALIFAX/DAUPHIN INT

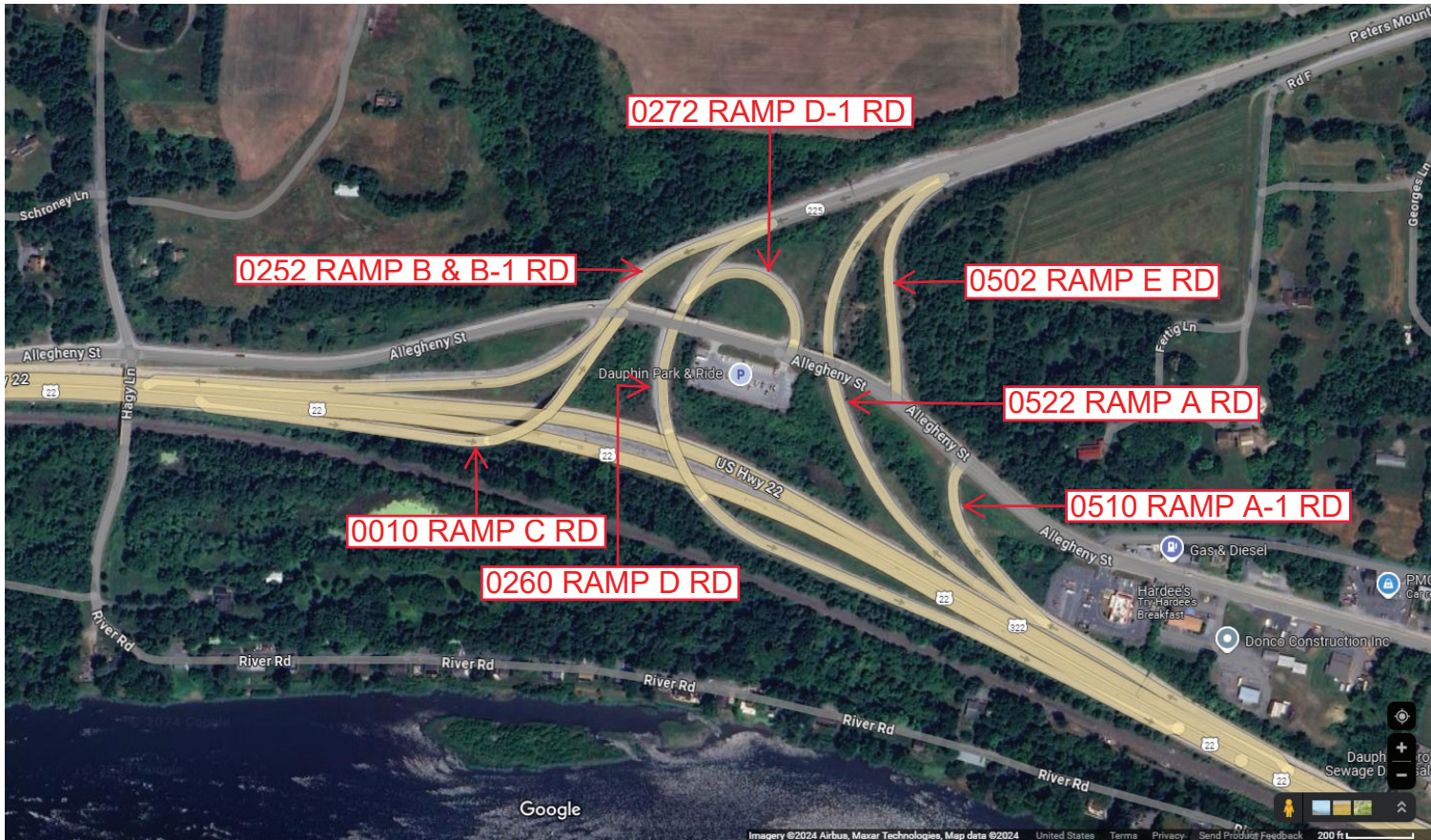
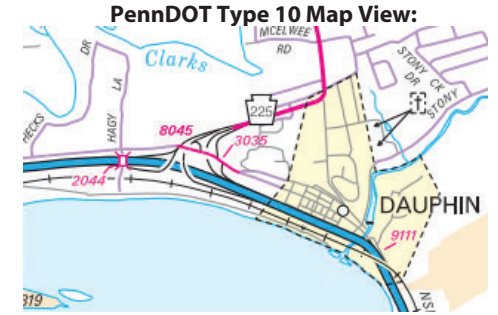
Intersecting SR's: US 22, PA 225 Peters Mountain Rd & 3035 Allegheny St

Ramp Segment Number and Ramp Segment Length Information:

Segment	Length	Segment	Length	Segment	Length	Segment	Length
0010	0985	0510	0484				
0252	1241	0522	1525				
0260	1997						
0272	0420						
0502	0625						

Primary Route Interchange Exit Number

Secondary Route Interchange Exit Number



Last Date Modified:

Sep 23, 2024

County: 22

# RMS Interchange Information

Print Form

Bureau of Maintenance & Operations  
Asset Management Division



Interchange Number: 9105

Interchange Name: SR 9105 SH

Intersecting SR's: SR 3014 Walnut St & SR 3016 Seventh St

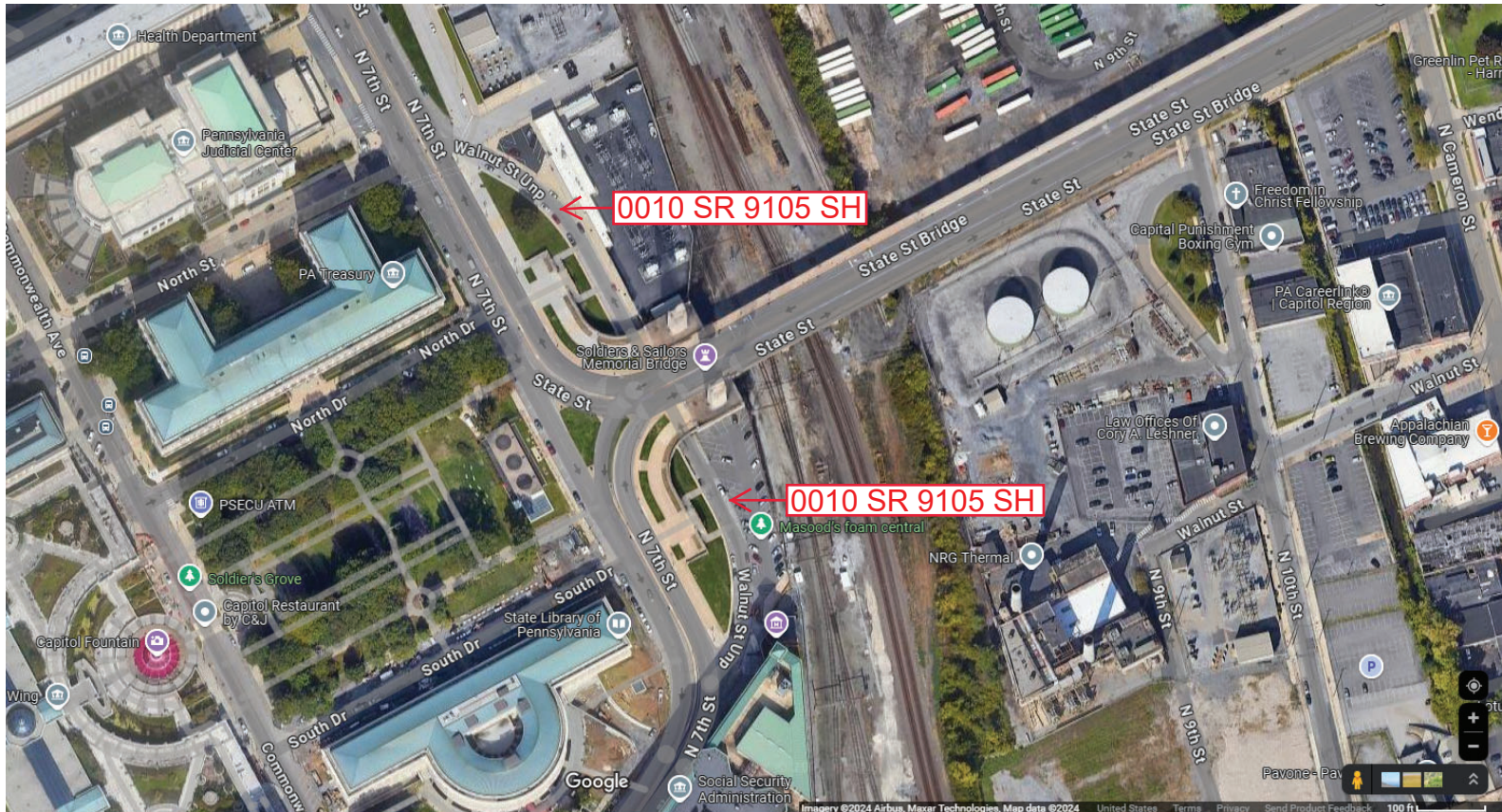
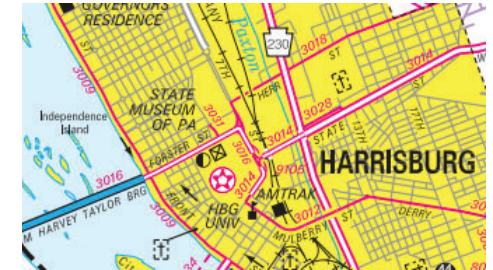
Ramp Segment Number and Ramp Segment Length Information:

Segment	Length	Segment	Length	Segment	Length	Segment	Length
0010	0894						

Primary Route Interchange Exit Number

Secondary Route Interchange Exit Number

PennDOT Type 10 Map View:



County: 22

# RMS Interchange Information

Print Form

Interchange Number: 9108

Bureau of Maintenance & Operations  
Asset Management Division



Interchange Name: SR 9108 SH

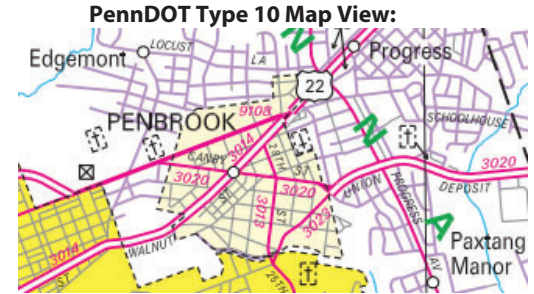
Intersecting SR's: US 22 Herr St & Walnut St

Ramp Segment Number and Ramp Segment Length Information:

Segment	Length	Segment	Length	Segment	Length	Segment	Length
0010	0178						

Primary Route Interchange Exit Number

Secondary Route Interchange Exit Number



Last Date Modified:

Sep 23, 2024

County: 22

# RMS Interchange Information

Bureau of Maintenance & Operations  
Asset Management Division

Print Form



Interchange Number: 9111

Interchange Name: SR 9111 SH

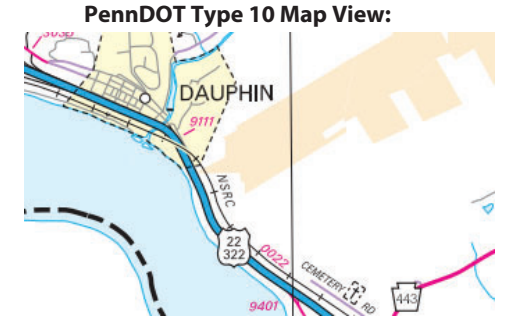
Intersecting SR's: US 22, BORO Erie St & BORO Allegheny St

Ramp Segment Number and Ramp Segment Length Information:

Segment	Length	Segment	Length	Segment	Length	Segment	Length
0010	0410						

Primary Route Interchange Exit Number

Secondary Route Interchange Exit Number



Privacy Choices Consumer Health Privacy

Feedback  
100 ft 30 m  
© 2024 TomTom, © Vexcel Imaging

© 2024 Microsoft

Last Date Modified: Sep 23, 2024



County: 22

# RMS Interchange Information

Bureau of Maintenance & Operations  
Asset Management Division

Print Form



Interchange Number: 9201

Interchange Name: I-81 SB EAST HANOVER REST AREA

Intersecting SR's: I-81 Rest Area

Ramp Segment Number and Ramp Segment Length Information:

Segment	Length	Segment	Length	Segment	Length	Segment	Length
0010	1508						
0012	0999						

Primary Route Interchange Exit Number

Secondary Route Interchange Exit Number

PennDOT Type 10 Map View:



Last Date Modified:

Jan 7, 2025

County: 22

# RMS Interchange Information

Bureau of Maintenance & Operations  
Asset Management Division

Print Form



Interchange Number: 9202

Interchange Name: I-81 NB EAST HANOVER REST AREA

Intersecting SR's: I-81 Rest Area

Ramp Segment Number and Ramp Segment Length Information:

Segment	Length	Segment	Length	Segment	Length	Segment	Length
0010	1488						
0012	0999						

Primary Route Interchange Exit Number

Secondary Route Interchange Exit Number

PennDOT Type 10 Map View:



Last Date Modified:

Sep 24, 2024

County: 22

# RMS Interchange Information

Bureau of Maintenance & Operations  
Asset Management Division

Print Form



Interchange Number: 9401

Interchange Name: HECKTON JUGHANDLE

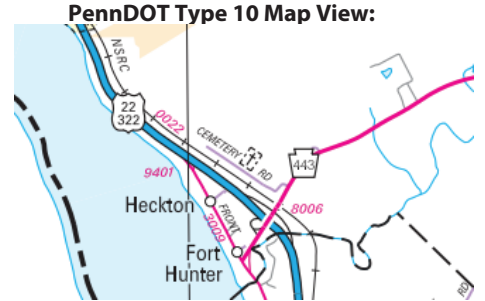
Intersecting SR's: SR 3009 Front St

Ramp Segment Number and Ramp Segment Length Information:

Segment	Length	Segment	Length	Segment	Length	Segment	Length
0010	0456						

Primary Route Interchange Exit Number

Secondary Route Interchange Exit Number



Last Date Modified: Sep 24, 2024

County: 22

# RMS Interchange Information

Bureau of Maintenance & Operations  
Asset Management Division

Print Form



Interchange Number: 9402

Interchange Name: JUGHANDLE RD

Intersecting SR's: US 322 & TWP Witmer Dr

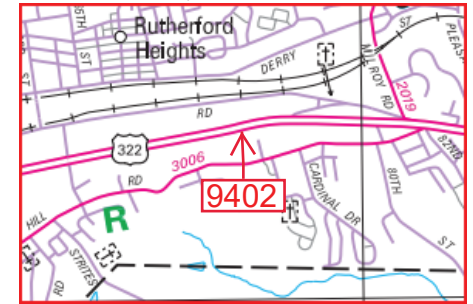
Ramp Segment Number and Ramp Segment Length Information:

Segment	Length	Segment	Length	Segment	Length	Segment	Length
0010	0370						

Primary Route Interchange Exit Number

Secondary Route Interchange Exit Number

PennDOT Type 10 Map View:



Privacy Choices Consumer Health Privacy

100 ft 30 m

© 2025 TomTom, © OpenStreetMap, © Vexxel Imaging

© 2025 Microsoft

Last Date Modified: Feb 27, 2025

County: 22

# RMS Interchange Information

Print Form

Interchange Number: 9410

Bureau of Maintenance & Operations  
Roadway Management Division



Interchange Name:

Intersecting SR's: SR 3001 Eisenhower Bl, SR 3010 Paxton St & SR 8025

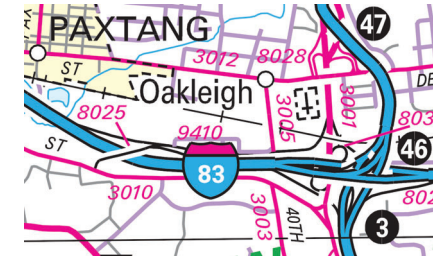
Ramp Segment Number and Ramp Segment Length Information:

Segment	Length	Segment	Length	Segment	Length	Segment	Length
0012	2899						
0022	0669						
0032	0420						

Primary Route Interchange Exit Number

Secondary Route Interchange Exit Number

PennDOT Type 10 Map View:



Last Date Modified: Jun 25, 2020