

County: 28

RMS Interchange Information

Bureau of Maintenance & Operations
Asset Management Division

Print Form



Interchange Number: 8001

Interchange Name: STATE LINE INT

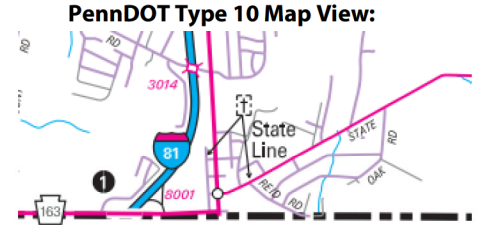
Intersecting SR's: I-81 & PA 163 Mason-Dixon Rd

Ramp Segment Number and Ramp Segment Length Information:

Segment	Length	Segment	Length	Segment	Length	Segment	Length
0750	0697						
0760	0923						

Primary Route Interchange Exit Number: 1

Secondary Route Interchange Exit Number



Last Date Modified: Sep 24, 2024

County: 28

RMS Interchange Information

Print Form

Interchange Number: 8003

Bureau of Maintenance & Operations
Asset Management Division



Interchange Name: MOLLY PITCHER HIGHWAY

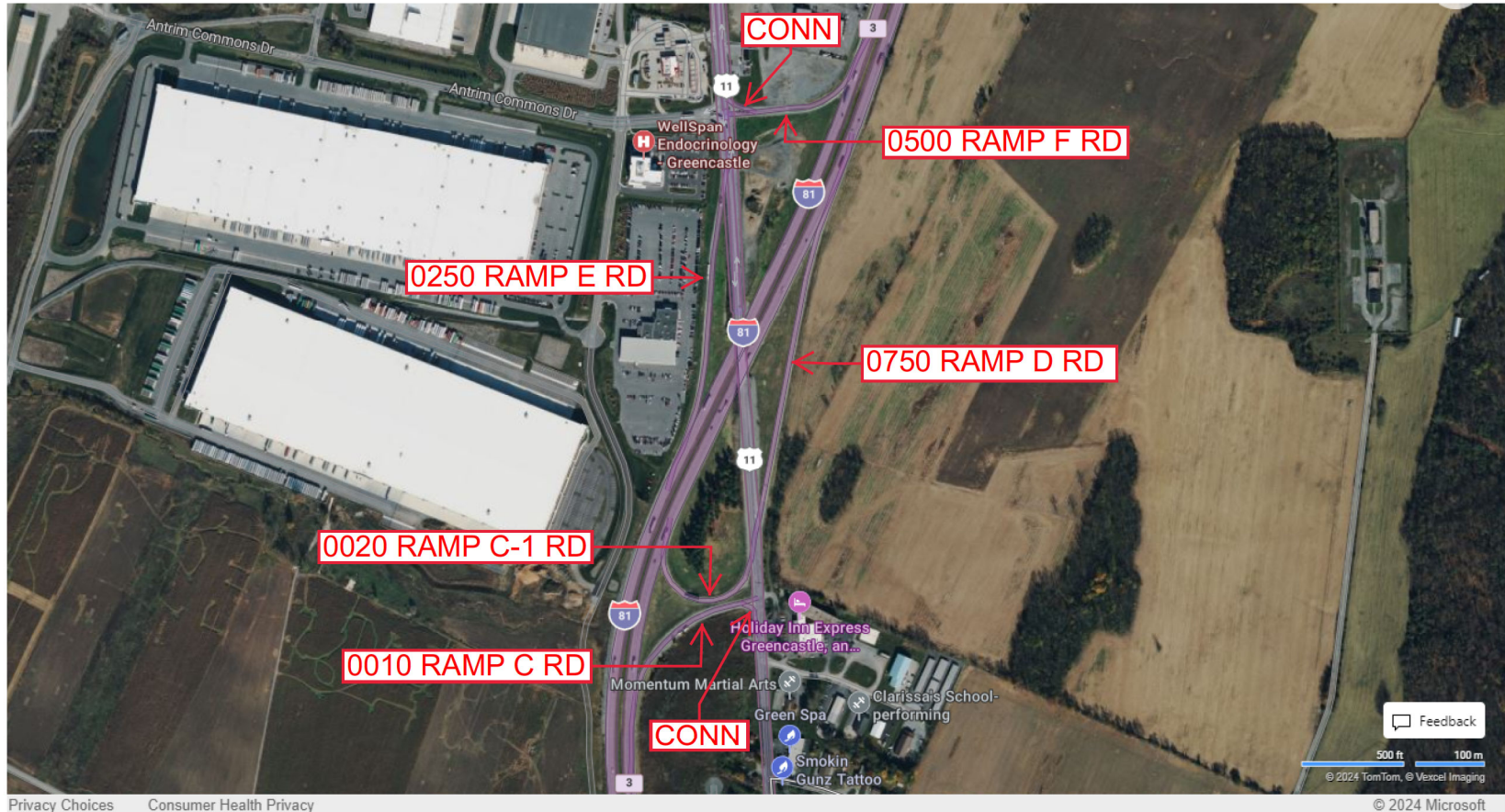
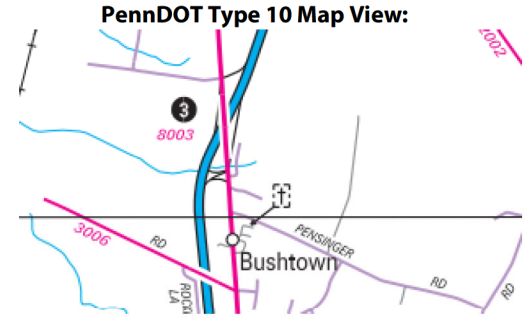
Intersecting SR's: I-81 & US 11 Molly Pitcher Hw

Ramp Segment Number and Ramp Segment Length Information:

Segment	Length	Segment	Length	Segment	Length	Segment	Length
0010	0731						
0020	0590						
0250	1128						
0500	0576						
0750	1293						

Primary Route Interchange Exit Number: 3

Secondary Route Interchange Exit Number



Privacy Choices Consumer Health Privacy

500 ft 100 m © 2024 TomTom, © Vexcel Imaging

© 2024 Microsoft

Last Date Modified:

Sep 25, 2024

County: 28

RMS Interchange Information

Print Form

Interchange Number: 8005

Bureau of Maintenance & Operations
Asset Management Division



Interchange Name: GREENCASTLE INT

Intersecting SR's: I-81 7 PA 16 Buchanan Tr

Ramp Segment Number and Ramp Segment Length Information:

Segment	Length	Segment	Length	Segment	Length	Segment	Length
0010	0614						
0250	0618						
0500	0706						
0750	0747						

Primary Route Interchange Exit Number: 5

Secondary Route Interchange Exit Number

PennDOT Type 10 Map View:



Last Date Modified:

Sep 25, 2024

County: 28

RMS Interchange Information

Print Form

Interchange Number: 8007

Bureau of Maintenance & Operations
Asset Management Division



Interchange Name: WAYNE AVE INT

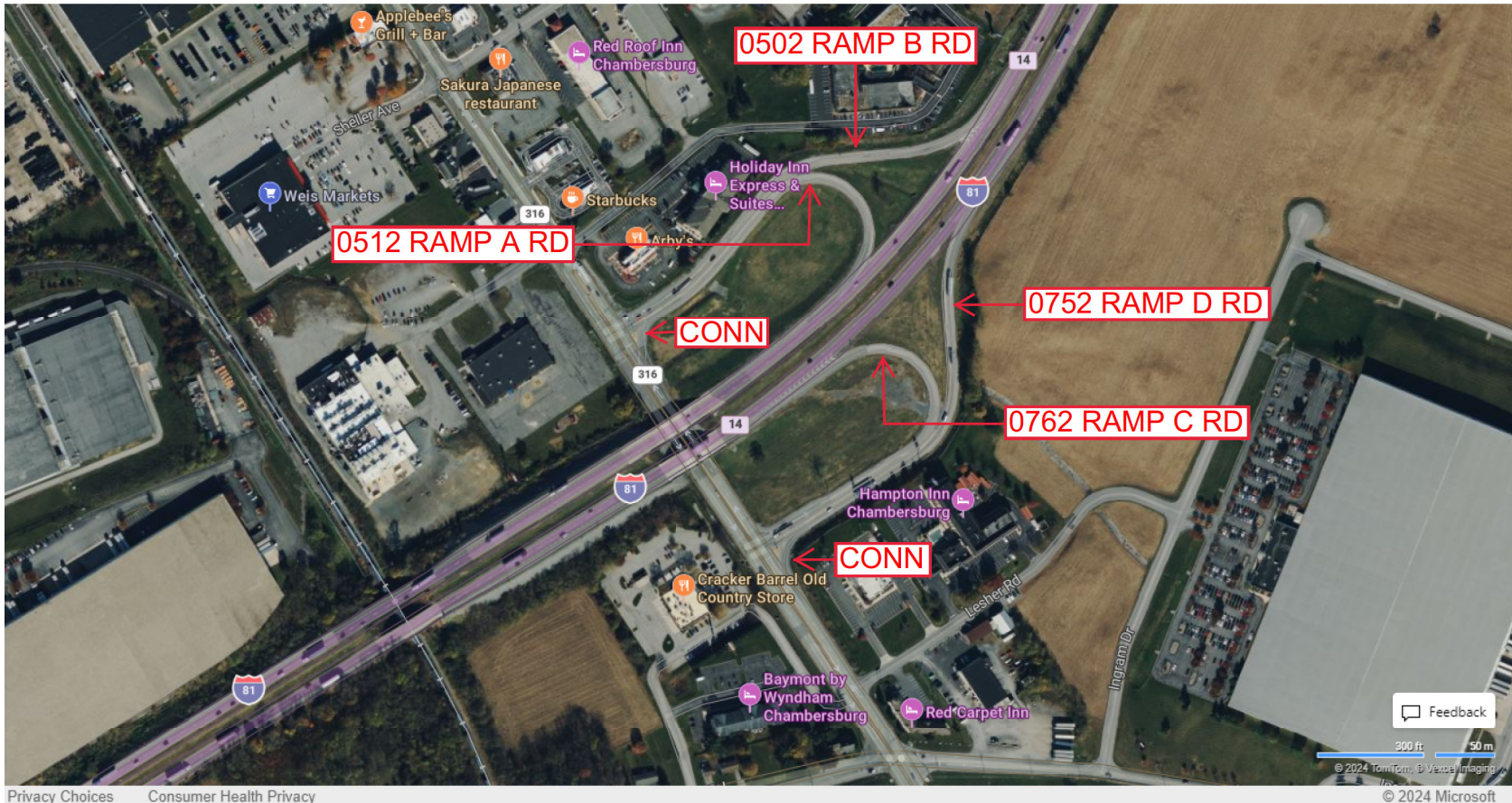
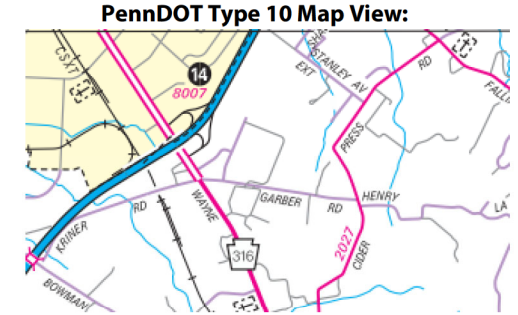
Intersecting SR's: I-81 American Legion Mem Hw & PA 316 Wayne Av

Ramp Segment Number and Ramp Segment Length Information:

Segment	Length	Segment	Length	Segment	Length	Segment	Length
0502	1140						
0512	1034						
0752	1165						
0762	1030						

Primary Route Interchange Exit Number: 14

Secondary Route Interchange Exit Number



Privacy Choices Consumer Health Privacy

Feedback

300 ft 50 m

© 2024 TomTom, © Vexcel Imaging, © 2024 Microsoft

Last Date Modified:

Sep 26, 2024

County: 28

RMS Interchange Information

Print Form

Interchange Number: 8009

Bureau of Maintenance & Operations
Asset Management Division



Interchange Name: CHAMBERSBURG INT

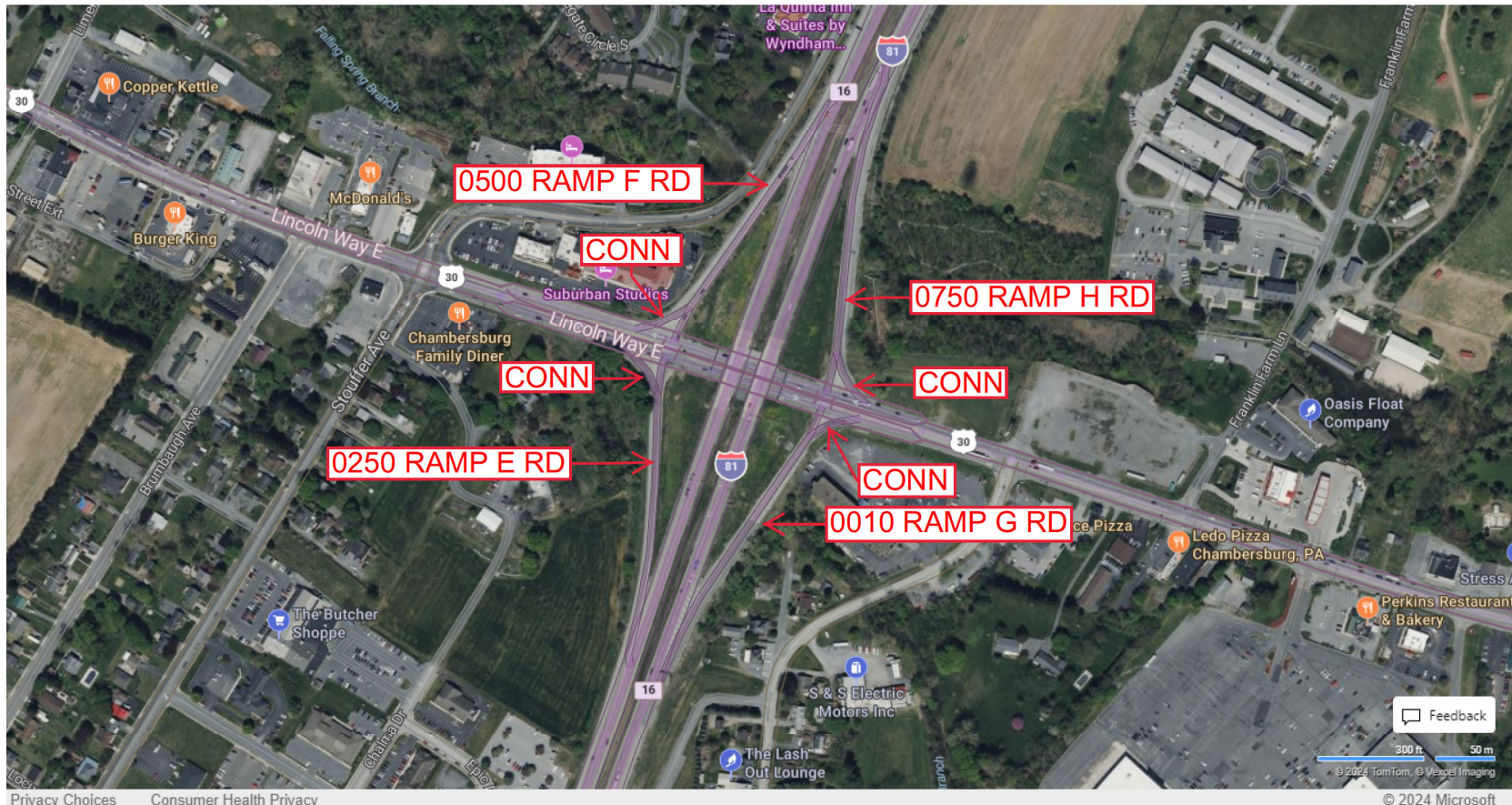
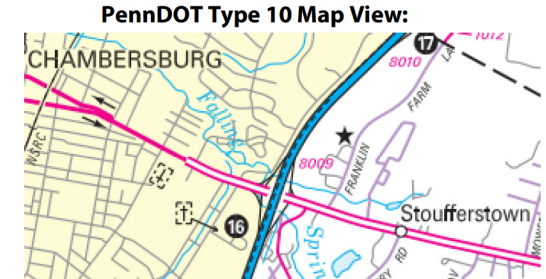
Intersecting SR's: I-81 & US 30 Lincoln Hw

Ramp Segment Number and Ramp Segment Length Information:

Segment	Length	Segment	Length	Segment	Length	Segment	Length
0010	0592						
0250	0619						
0500	0606						
0750	0664						

Primary Route Interchange Exit Number: 16

Secondary Route Interchange Exit Number



Privacy Choices Consumer Health Privacy

© 2024 Microsoft

Last Date Modified:

Sep 26, 2024

County: 28

RMS Interchange Information

Print Form

Interchange Number: 8010

Bureau of Maintenance & Operations
Asset Management Division



Interchange Name: WALKER ROAD INT

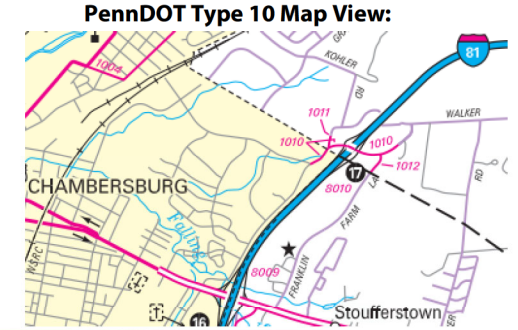
Intersecting SR's: I-81 & SR 1010 Walker Rd

Ramp Segment Number and Ramp Segment Length Information:

Segment	Length	Segment	Length	Segment	Length	Segment	Length
0010	0965						
0250	0498						
0500	0745						
0750	0628						

Primary Route Interchange Exit Number: 17

Secondary Route Interchange Exit Number



Last Date Modified:

Sep 26, 2024

County: 28

RMS Interchange Information

Print Form

Interchange Number: 8011

Bureau of Maintenance & Operations
Asset Management Division



Interchange Name: SCOTLAND INT

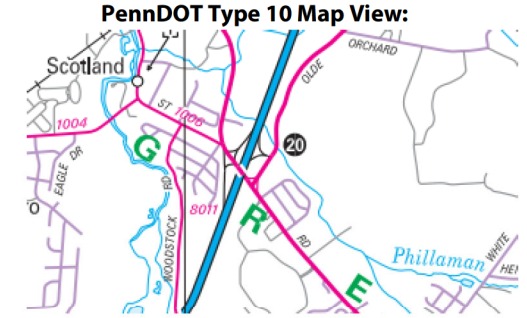
Intersecting SR's: I-81, PA 997 Black Gap Rd & PA 696 Old Scotland Rd

Ramp Segment Number and Ramp Segment Length Information:

Segment	Length	Segment	Length	Segment	Length	Segment	Length
0250	0593						
0500	0600						
0752	0375						
0762	0301						

Primary Route Interchange Exit Number: 20

Secondary Route Interchange Exit Number



Privacy Choices Consumer Health Privacy

Last Date Modified: Sep 27, 2024

County: 28

RMS Interchange Information

Print Form

Interchange Number: 8013

Bureau of Maintenance & Operations
Asset Management Division



Interchange Name: FAYETTE STREET INT

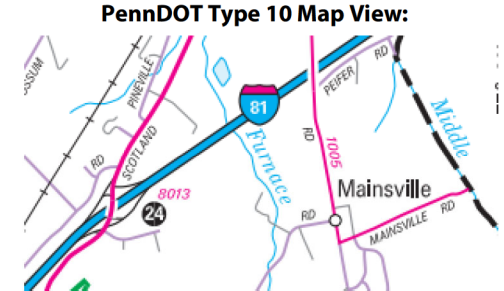
Intersecting SR's: I-81 & PA 696 Olde Scotland Rd

Ramp Segment Number and Ramp Segment Length Information:

Segment	Length	Segment	Length	Segment	Length	Segment	Length
0010	0538						
0250	0681						
0500	0477						
0750	0852						

Primary Route Interchange Exit Number: 24

Secondary Route Interchange Exit Number



Last Date Modified:

Sep 27, 2024

County: 28

RMS Interchange Information

Print Form

Interchange Number: 8015

Bureau of Maintenance & Operations
Asset Management Division



Interchange Name: MARION INT

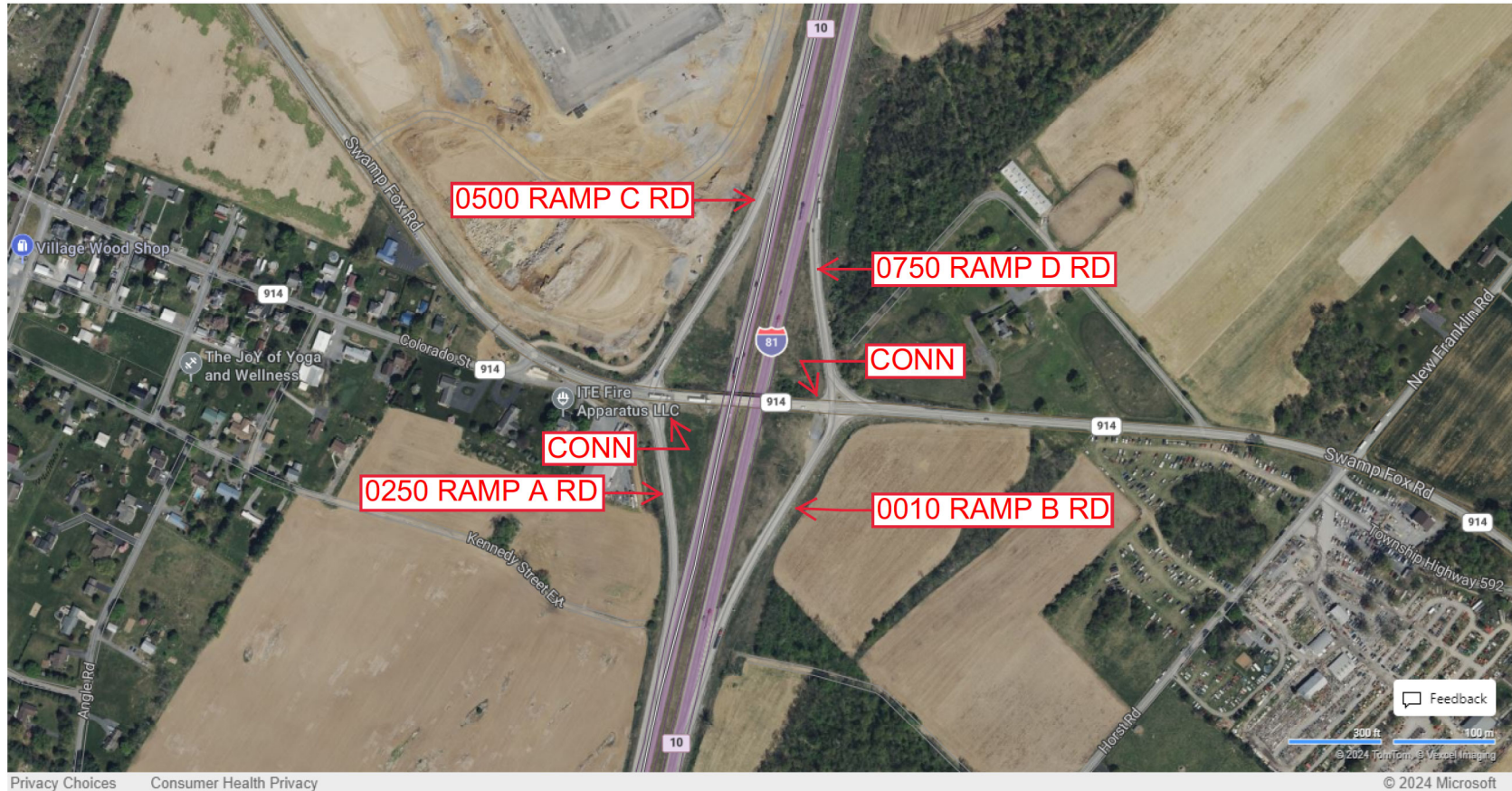
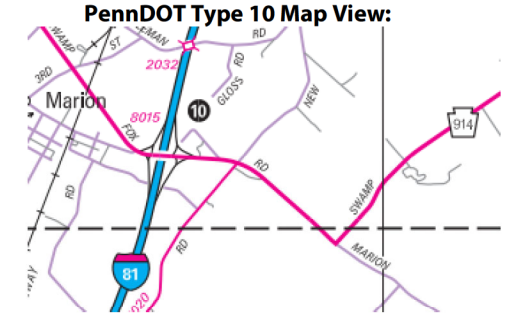
Intersecting SR's: I-81 & PA 914 Swamp Fox Rd

Ramp Segment Number and Ramp Segment Length Information:

Segment	Length	Segment	Length	Segment	Length	Segment	Length
0010	0789						
0250	0613						
0500	0781						
0750	0580						

Primary Route Interchange Exit Number: 10

Secondary Route Interchange Exit Number



Privacy Choices Consumer Health Privacy

© 2024 Microsoft

Last Date Modified:

Sep 27, 2024

County: 28

RMS Interchange Information

Print Form

Interchange Number: 9101

Bureau of Maintenance & Operations
Asset Management Division



Interchange Name: SR 9101 SH

Intersecting SR's: PA 997 Cumberland St & SR 1003 Main St

Ramp Segment Number and Ramp Segment Length Information:

Segment	Length	Segment	Length	Segment	Length	Segment	Length
0010	0280						

Primary Route Interchange Exit Number

Secondary Route Interchange Exit Number

PennDOT Type 10 Map View:



Last Date Modified: Sep 27, 2024

County: 28

RMS Interchange Information

Print Form

Interchange Number: 9104

Bureau of Maintenance & Operations
Asset Management Division



Interchange Name: SR 9104 SH

Intersecting SR's: US 30 Lincoln Hw & SR 1008 Main St

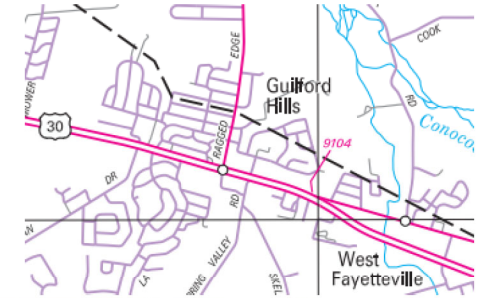
Ramp Segment Number and Ramp Segment Length Information:

Segment	Length	Segment	Length	Segment	Length	Segment	Length
0010	0393						

Primary Route Interchange Exit Number

Secondary Route Interchange Exit Number

PennDOT Type 10 Map View:



Privacy Choices Consumer Health Privacy

© 2024 Microsoft

Last Date Modified:

Sep 27, 2024

County: 28

RMS Interchange Information

Print Form

Interchange Number: 9105

Bureau of Maintenance & Operations
Asset Management Division



Interchange Name: SR 9105 SH

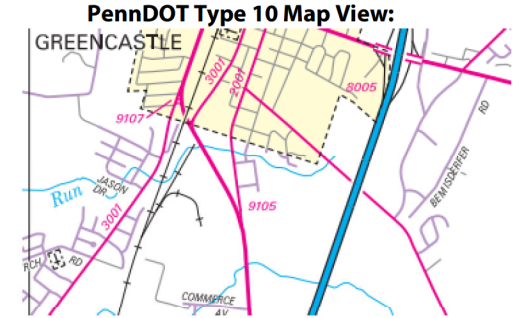
Intersecting SR's: US 11 Molly Pitcher Hw & SR 2001 Washington St

Ramp Segment Number and Ramp Segment Length Information:

Segment	Length	Segment	Length	Segment	Length	Segment	Length
0010	0519						

Primary Route Interchange Exit Number

Secondary Route Interchange Exit Number



County: 28

RMS Interchange Information

Print Form

Interchange Number: 9106

Bureau of Maintenance & Operations
Asset Management Division



Interchange Name: SR 9106 SH

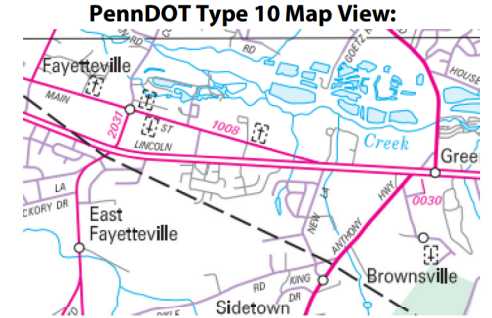
Intersecting SR's: US 30 Lincoln Hw & SR 1008 Main St

Ramp Segment Number and Ramp Segment Length Information:

Segment	Length	Segment	Length	Segment	Length	Segment	Length
0010	0227						

Primary Route Interchange Exit Number

Secondary Route Interchange Exit Number



Last Date Modified: Sep 30, 2024

County: 28

RMS Interchange Information

Print Form

Interchange Number: 9107

Bureau of Maintenance & Operations
Asset Management Division



Interchange Name: WYE ROAD

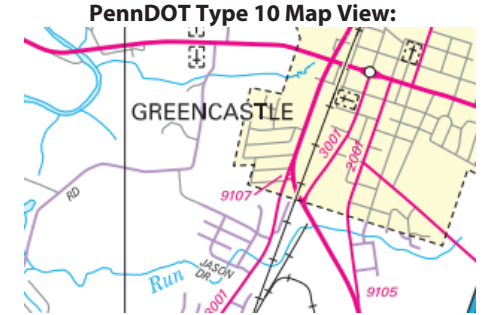
Intersecting SR's: US 11 Molly Pitcher Hw & SR 3001 Williamsport Pk

Ramp Segment Number and Ramp Segment Length Information:

Segment	Length	Segment	Length	Segment	Length	Segment	Length
0010	0190						

Primary Route
Interchange Exit
Number

Secondary Route
Interchange Exit
Number



Last Date Modified:

Sep 25, 2024

County: 28

RMS Interchange Information

Print Form

Interchange Number: 9201

Bureau of Maintenance & Operations
Asset Management Division



Interchange Name: I-81 NB WEIGH STATION

Intersecting SR's: I-81 American Legion Mem Hw

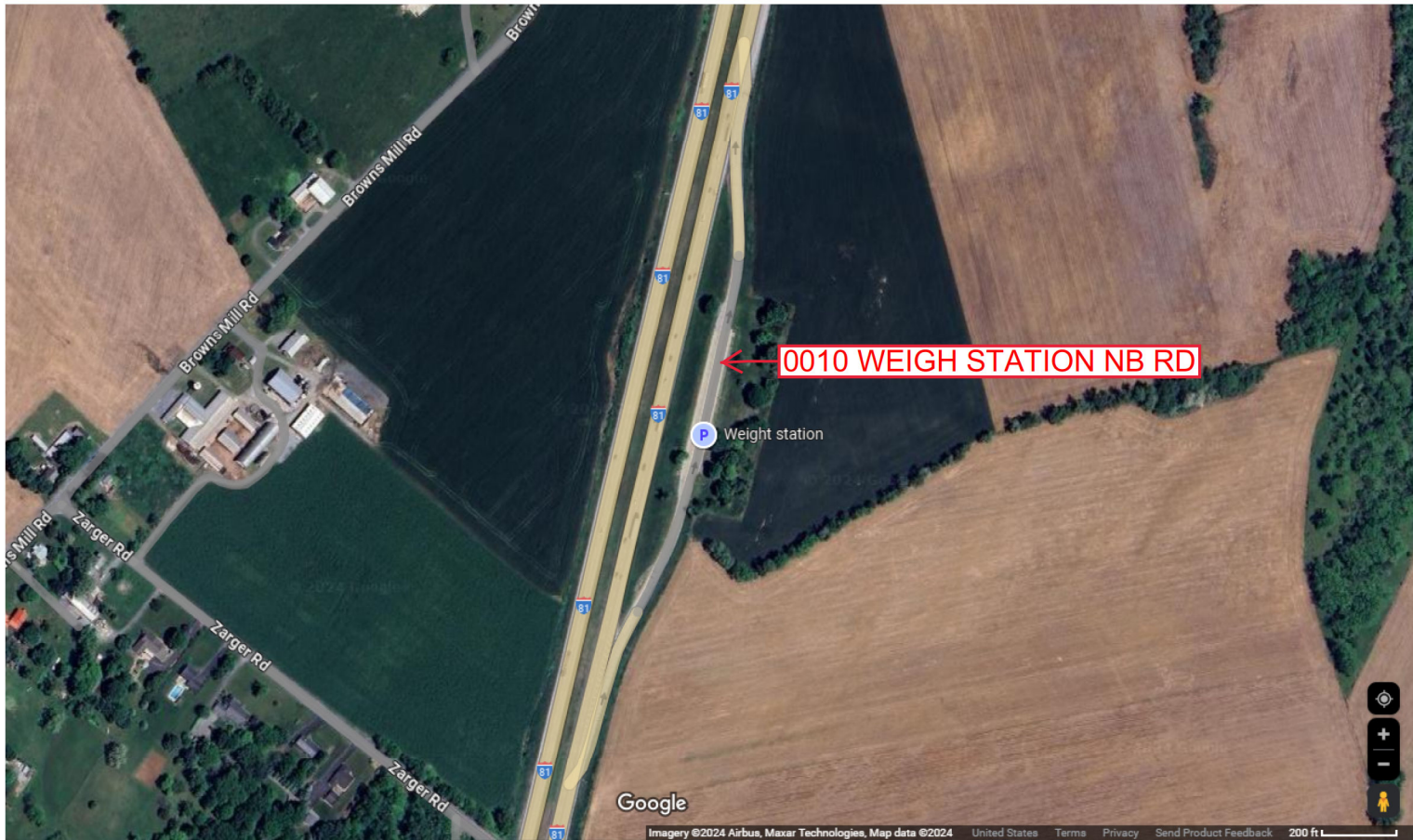
Ramp Segment Number and Ramp Segment Length Information:

Segment	Length	Segment	Length	Segment	Length	Segment	Length
0010	1373						

Primary Route Interchange Exit Number

Secondary Route Interchange Exit Number

PennDOT Type 10 Map View:



Last Date Modified: Sep 30, 2024

County: 28

RMS Interchange Information

Print Form

Interchange Number: 9202

Bureau of Maintenance & Operations
Asset Management Division



Interchange Name: I-81 SB WEIGH STATION

Intersecting SR's: I-81 American Legion Mem Hw

Ramp Segment Number and Ramp Segment Length Information:

Segment	Length	Segment	Length	Segment	Length	Segment	Length
0010	1448						

Primary Route
Interchange Exit
Number

Secondary Route
Interchange Exit
Number

PennDOT Type 10 Map View:



Last Date Modified:

Sep 30, 2024

County: 28

RMS Interchange Information

Print Form

Interchange Number: 9204

Bureau of Maintenance & Operations
Asset Management Division



Interchange Name: ANTRIM I-80 WELCOME CENTER

Intersecting SR's: I-81 American Legion Mem Hw

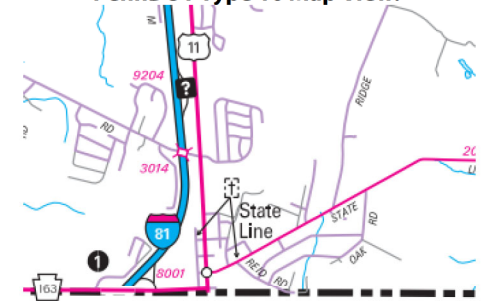
Ramp Segment Number and Ramp Segment Length Information:

Segment	Length	Segment	Length	Segment	Length	Segment	Length
0010	1578						
0020	0808						

Primary Route Interchange Exit Number

Secondary Route Interchange Exit Number

PennDOT Type 10 Map View:



Last Date Modified:

Sep 30, 2024

County: 28

RMS Interchange Information

Print Form

Interchange Number: 9302

Bureau of Maintenance & Operations
Asset Management Division



Interchange Name: US 30 PETERS TWP TRUCK ESCAPE RAMP

Intersecting SR's: US 30 Lincoln Hw

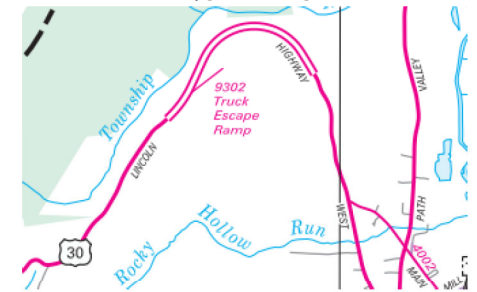
Ramp Segment Number and Ramp Segment Length Information:

Segment	Length	Segment	Length	Segment	Length	Segment	Length
0010	1220						

Primary Route
Interchange Exit
Number

Secondary Route
Interchange Exit
Number

PennDOT Type 10 Map View:



Last Date Modified:

Sep 30, 2024

County: 28

RMS Interchange Information

Print Form

Interchange Number: 9430

Bureau of Maintenance & Operations
Asset Management Division



Interchange Name: LINCOLN HW & LOUDEN ST

Intersecting SR's: US 30 Lincoln Hw & Louden St

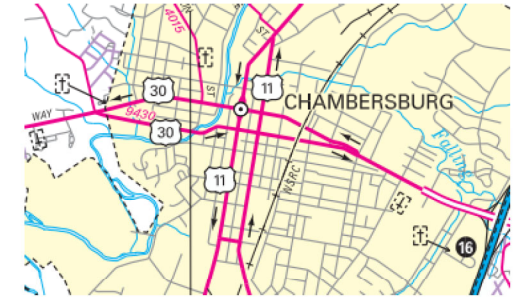
Ramp Segment Number and Ramp Segment Length Information:

Segment	Length	Segment	Length	Segment	Length	Segment	Length
0010	3043						

Primary Route Interchange Exit Number

Secondary Route Interchange Exit Number

PennDOT Type 10 Map View:



Last Date Modified:

Sep 30, 2024