

County: **36**

RMS Interchange Information

Print Form

Interchange Number: **8001**

Bureau of Maintenance & Operations
Asset Management Division



Interchange Name: **MANHEIM PIKE INT**

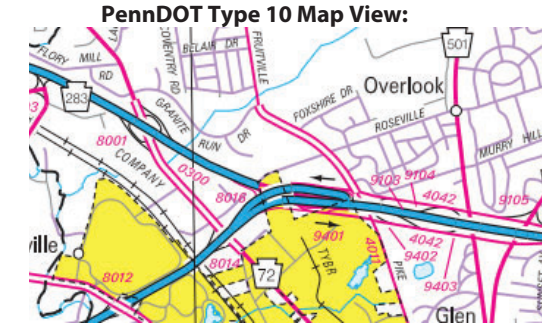
Intersecting SR's: **PA 72 Manheim Pk & PA 300 (PA283)**

Ramp Segment Number and Ramp Segment Length Information:

Segment	Length	Segment	Length	Segment	Length	Segment	Length
0010	0927	0520	0194				
0020	0598						
0030	0335						
0500	0600						
0510	0913						

Primary Route
Interchange Exit
Number

Secondary Route
Interchange Exit
Number



Last Date Modified:

Oct 1, 2024

County: 36

RMS Interchange Information

Print Form

Bureau of Maintenance & Operations
Asset Management Division



Interchange Number: 8002

Interchange Name: THIRD STREET INT

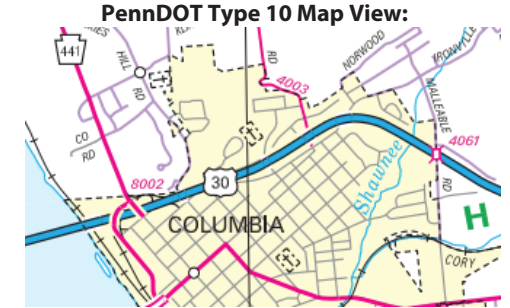
Intersecting SR's: US 30, PA 441 Front St & SR 3441 Third St

Ramp Segment Number and Ramp Segment Length Information:

Segment	Length	Segment	Length	Segment	Length	Segment	Length
0010	0588						
0500	0776						
0510	1052						
0750	0422						

Primary Route Interchange Exit Number

Secondary Route Interchange Exit Number



Privacy Choices Consumer Health Privacy

© 2024 Microsoft

Last Date Modified:

Oct 1, 2024

County: 36

RMS Interchange Information

Print Form

Bureau of Maintenance & Operations
Asset Management Division



Interchange Number: 8003

Interchange Name: ROHRERSTOWN ROAD INT

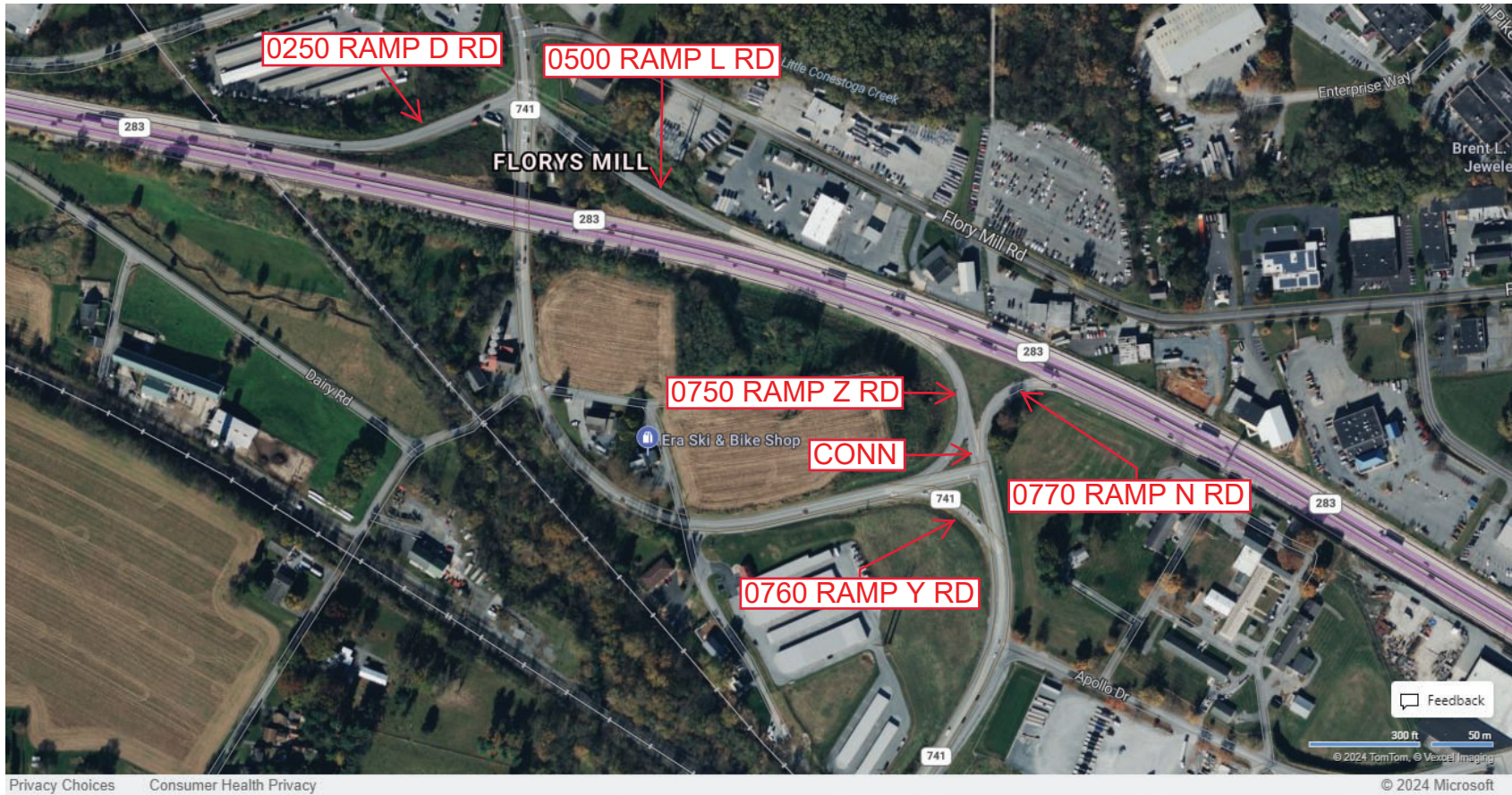
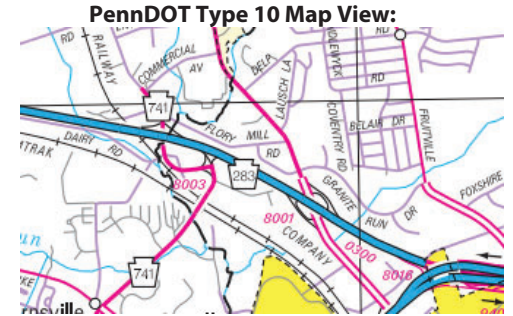
Intersecting SR's: PA 300 (PA 283) & PA 741 Rohrerstown Rd

Ramp Segment Number and Ramp Segment Length Information:

Segment	Length	Segment	Length	Segment	Length	Segment	Length
0250	0938						
0500	0692						
0750	0408						
0760	0135						
0770	0312						

Primary Route Interchange Exit Number

Secondary Route Interchange Exit Number



Privacy Choices Consumer Health Privacy

Feedback

300 ft 50 m

© 2024 TomTom, © Vexcel Imaging

© 2024 Microsoft

Last Date Modified: Oct 1, 2024

County: 36

RMS Interchange Information

Print Form

Bureau of Maintenance & Operations
Asset Management Division



Interchange Number: 8004

Interchange Name: PROSPECT ROAD INT

Intersecting SR's: US 30 Lincoln Hw & SR 4005 Prospect Rd

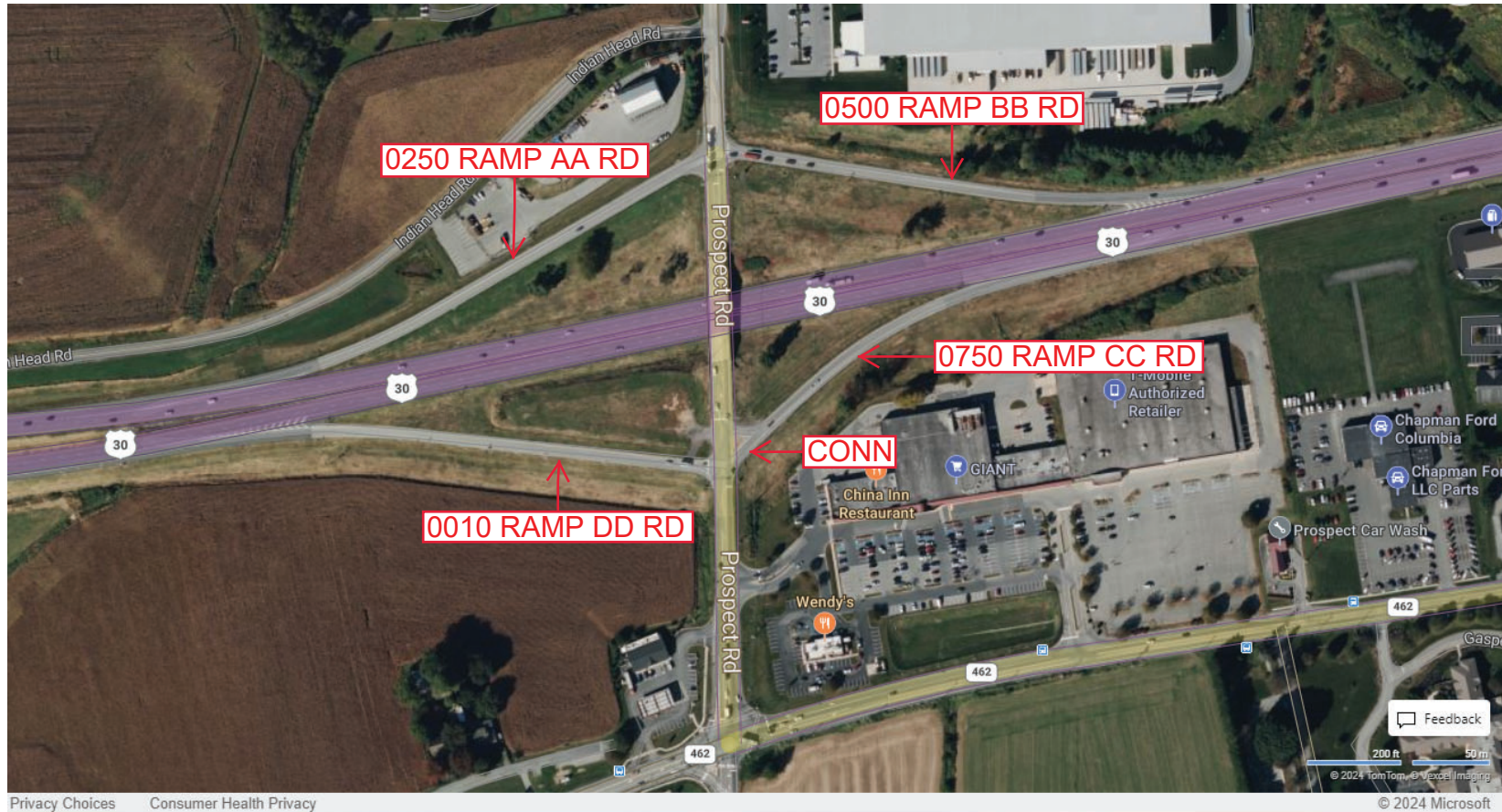
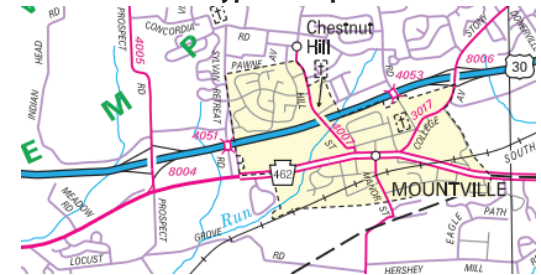
Ramp Segment Number and Ramp Segment Length Information:

Segment	Length	Segment	Length	Segment	Length	Segment	Length
0010	0883						
0250	1042						
0500	0879						
0750	0622						

Primary Route
Interchange Exit
Number

Secondary Route
Interchange Exit
Number

PennDOT Type 10 Map View:



Privacy Choices Consumer Health Privacy

© 2024 Microsoft

Last Date Modified: Oct 2, 2024

County: 36

RMS Interchange Information

Print Form

Bureau of Maintenance & Operations
Asset Management Division



Interchange Number: 8005

Interchange Name: STATE ROAD INT

Intersecting SR's: PA 300 (PA 283), PA 772 State Rd & T554 State Rd

Ramp Segment Number and Ramp Segment Length Information:

Segment	Length	Segment	Length	Segment	Length	Segment	Length
0010	0772						
0250	0754						
0500	0708						
0750	0667						

Primary Route Interchange Exit Number

Secondary Route Interchange Exit Number

PennDOT Type 10 Map View:



Last Date Modified: Oct 2, 2024

County: 36

RMS Interchange Information

Bureau of Maintenance & Operations
Asset Management Division

Print Form



Interchange Number: 8006

Interchange Name: STONY BATTERY ROAD INT

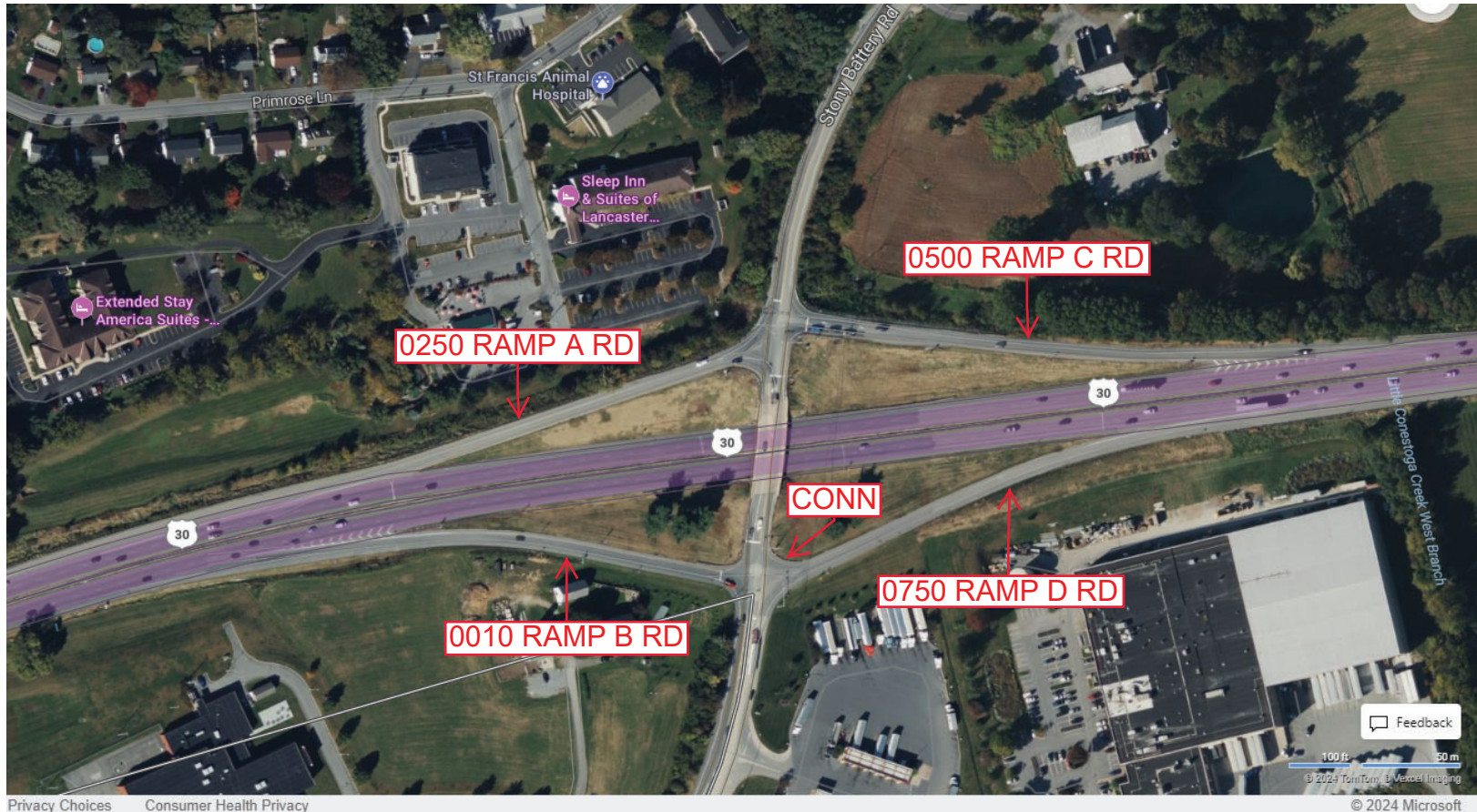
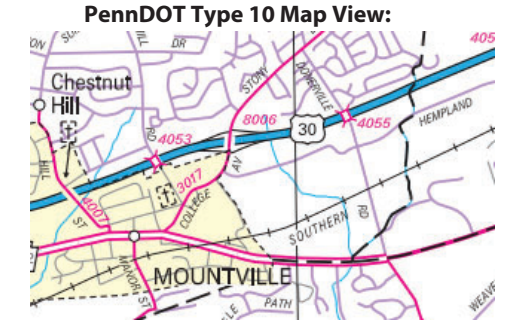
Intersecting SR's: US 30 Lincoln Hw & SR 3017 Stony Battery Rd

Ramp Segment Number and Ramp Segment Length Information:

Segment	Length	Segment	Length	Segment	Length	Segment	Length
0010	0588						
0250	0616						
0500	0717						
0750	0647						

Primary Route Interchange Exit Number

Secondary Route Interchange Exit Number



Privacy Choices Consumer Health Privacy

© 2024 Microsoft

Last Date Modified:

Oct 2, 2024

County: 36

RMS Interchange Information

Print Form

Bureau of Maintenance & Operations
Asset Management Division



Interchange Number: 8007

Interchange Name: SPOOKY NOOK ROAD INT

Intersecting SR's: PA 300 (PA 283) & SR 4001 Spooky Nook Rd

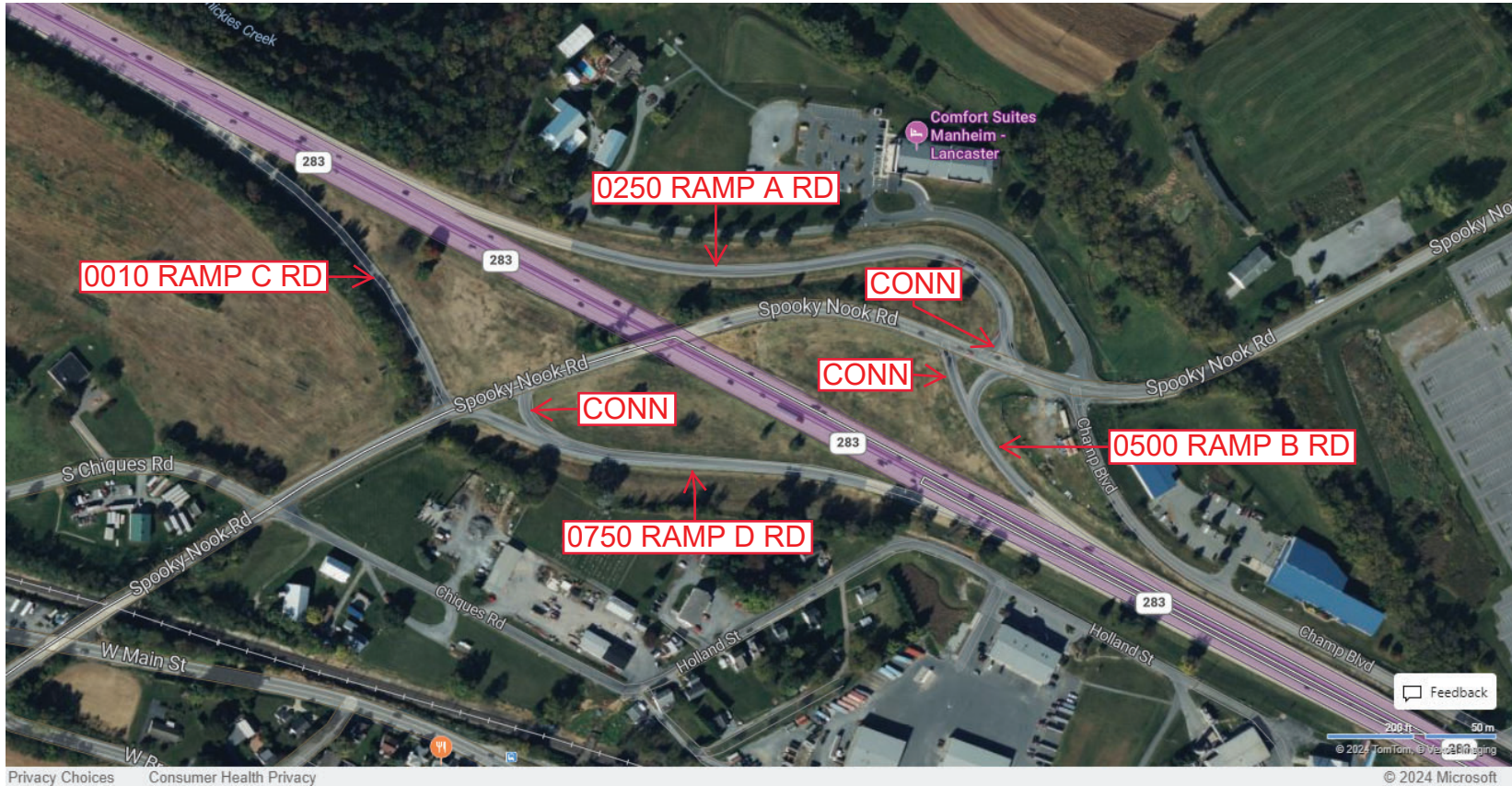
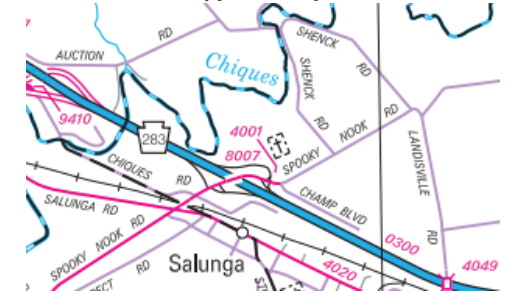
Ramp Segment Number and Ramp Segment Length Information:

Segment	Length	Segment	Length	Segment	Length	Segment	Length
0010	0810						
0250	1473						
0500	0434						
0750	1028						

Primary Route Interchange Exit Number

Secondary Route Interchange Exit Number

PennDOT Type 10 Map View:



Last Date Modified: Oct 3, 2024

County: 36

RMS Interchange Information

Bureau of Maintenance & Operations
Asset Management Division

Print Form



Interchange Number: 8008

Interchange Name: CENTERVILLE ROAD INT

Intersecting SR's: US 30 Lincoln Hw & T408 Centerville Rd

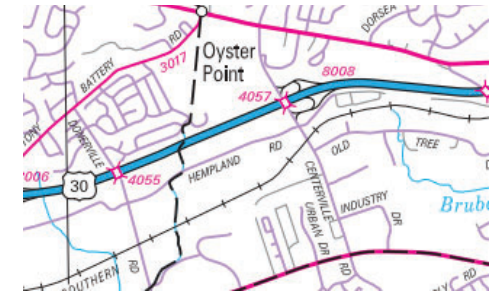
Ramp Segment Number and Ramp Segment Length Information:

Segment	Length	Segment	Length	Segment	Length	Segment	Length
0500	0860						
0510	1229						
0750	0958						
0760	1242						

Primary Route Interchange Exit Number

Secondary Route Interchange Exit Number

PennDOT Type 10 Map View:



Last Date Modified: Oct 3, 2024

County: 36

RMS Interchange Information

Print Form

Bureau of Maintenance & Operations
Asset Management Division



Interchange Number: 8009

Interchange Name: **ESBENSHADE ROAD INT**

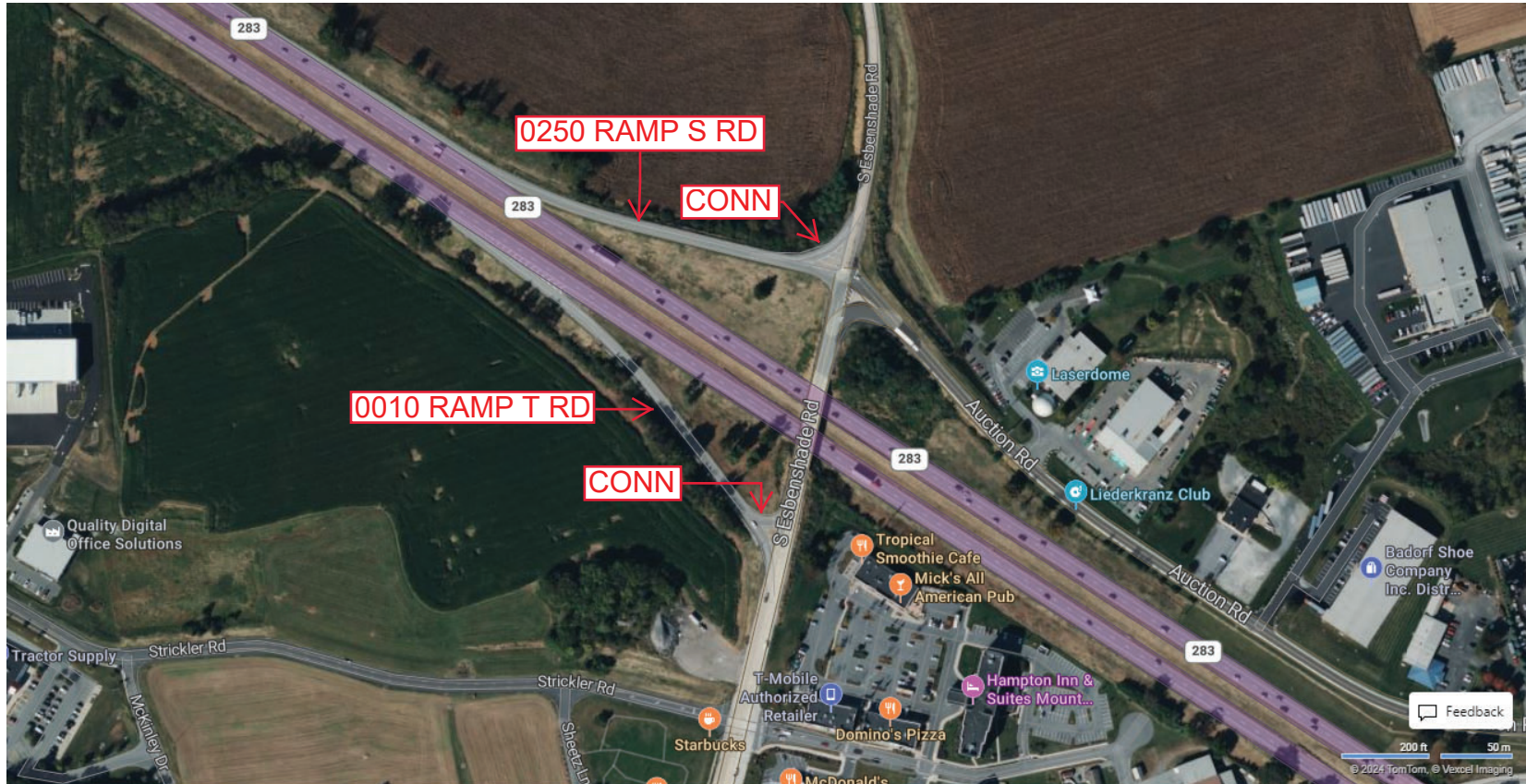
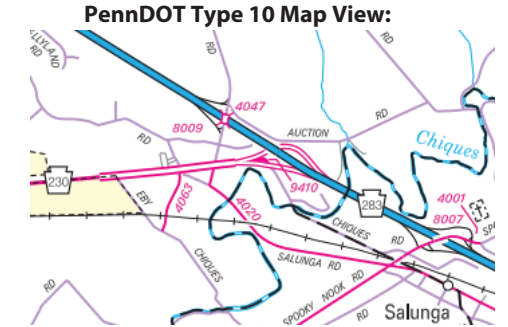
Intersecting SR's: **PA 300 (PA 283) & T 368 Esbenshade Rd**

Ramp Segment Number and Ramp Segment Length Information:

Segment	Length	Segment	Length	Segment	Length	Segment	Length
0010	0762						
0250	0813						

Primary Route Interchange Exit Number

Secondary Route Interchange Exit Number



Privacy Choices Consumer Health Privacy

© 2024 Microsoft

Last Date Modified:

Oct 3, 2024

County: 36

RMS Interchange Information

Print Form

Bureau of Maintenance & Operations
Asset Management Division



Interchange Number: 8010

Interchange Name: ROHERSTOWN ROAD INT

Intersecting SR's: US 30 Lincoln Hw & PA 741 Rotherstown Rd

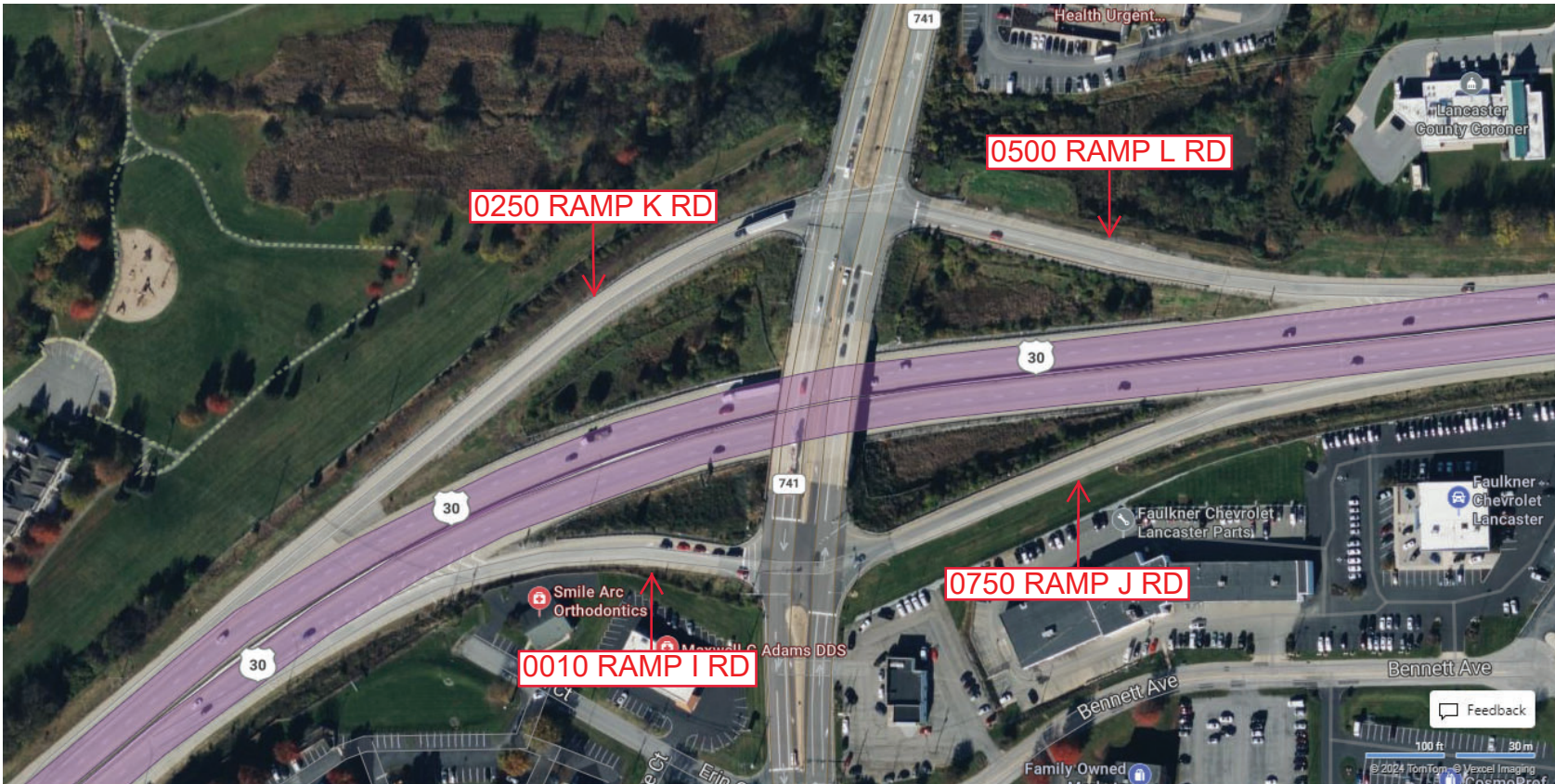
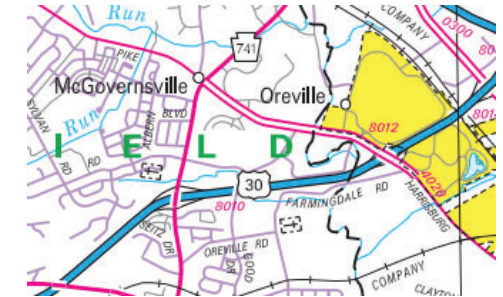
Ramp Segment Number and Ramp Segment Length Information:

Segment	Length	Segment	Length	Segment	Length	Segment	Length
0010	0346						
0250	0689						
0500	0557						
0750	0601						

Primary Route Interchange Exit Number

Secondary Route Interchange Exit Number

PennDOT Type 10 Map View:



Privacy Choices Consumer Health Privacy

Last Date Modified:

Oct 4, 2024

County: 36

RMS Interchange Information

Bureau of Maintenance & Operations
Asset Management Division

Print Form



Interchange Number: 8011

Interchange Name: MOUNT JOY ROAD INT

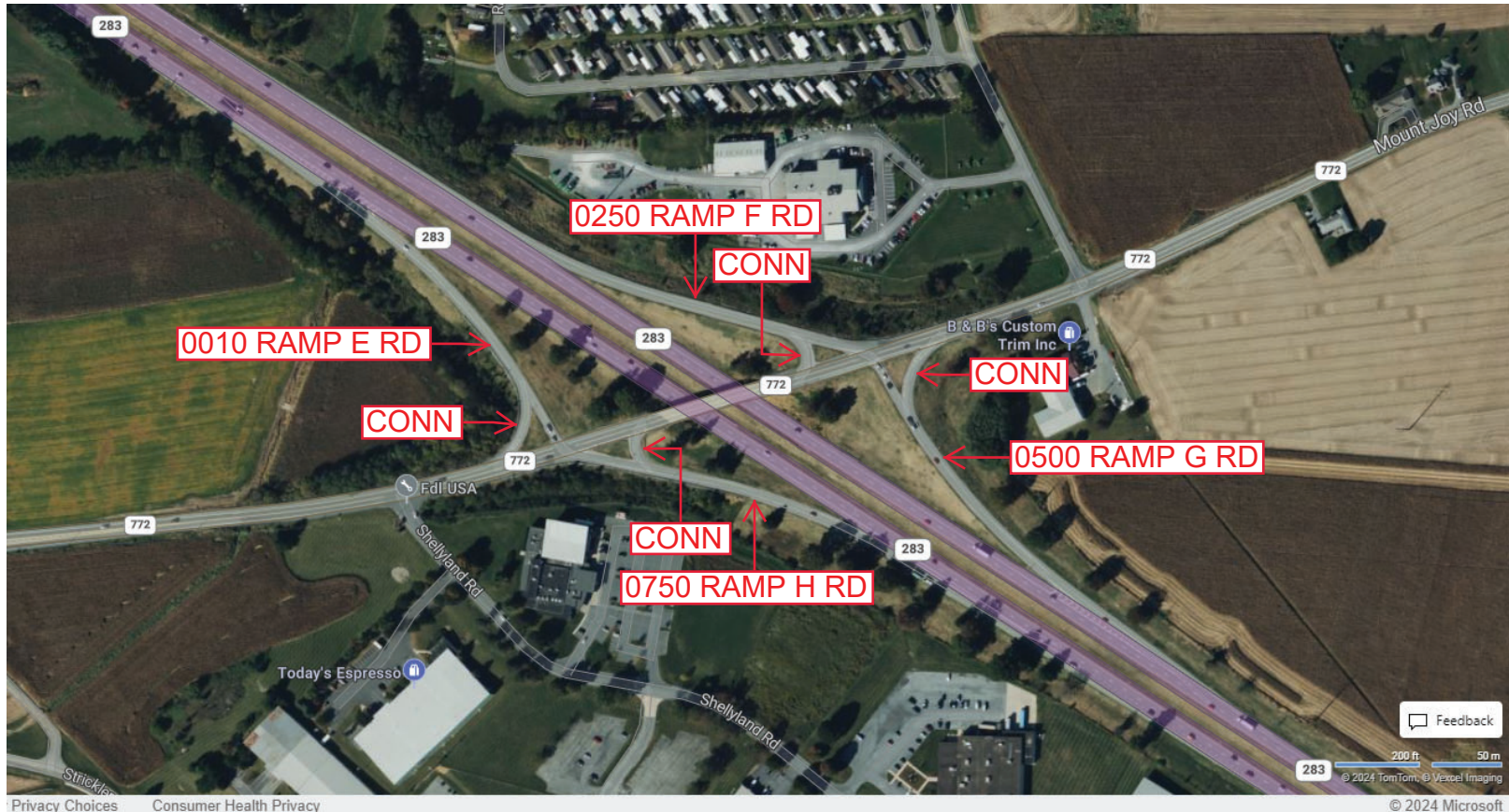
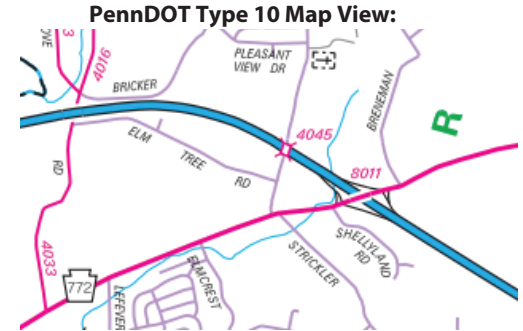
Intersecting SR's: PA 283 (PA300) & PA 772 Mount Joy Rd

Ramp Segment Number and Ramp Segment Length Information:

Segment	Length	Segment	Length	Segment	Length	Segment	Length
0010	0702						
0250	0737						
0500	0681						
0750	0673						

Primary Route Interchange Exit Number

Secondary Route Interchange Exit Number



Last Date Modified: Oct 4, 2024

County: 36

RMS Interchange Information

Print Form

Bureau of Maintenance & Operations
Asset Management Division



Interchange Number: 8012

Interchange Name: HARRISBURG PIKE INT

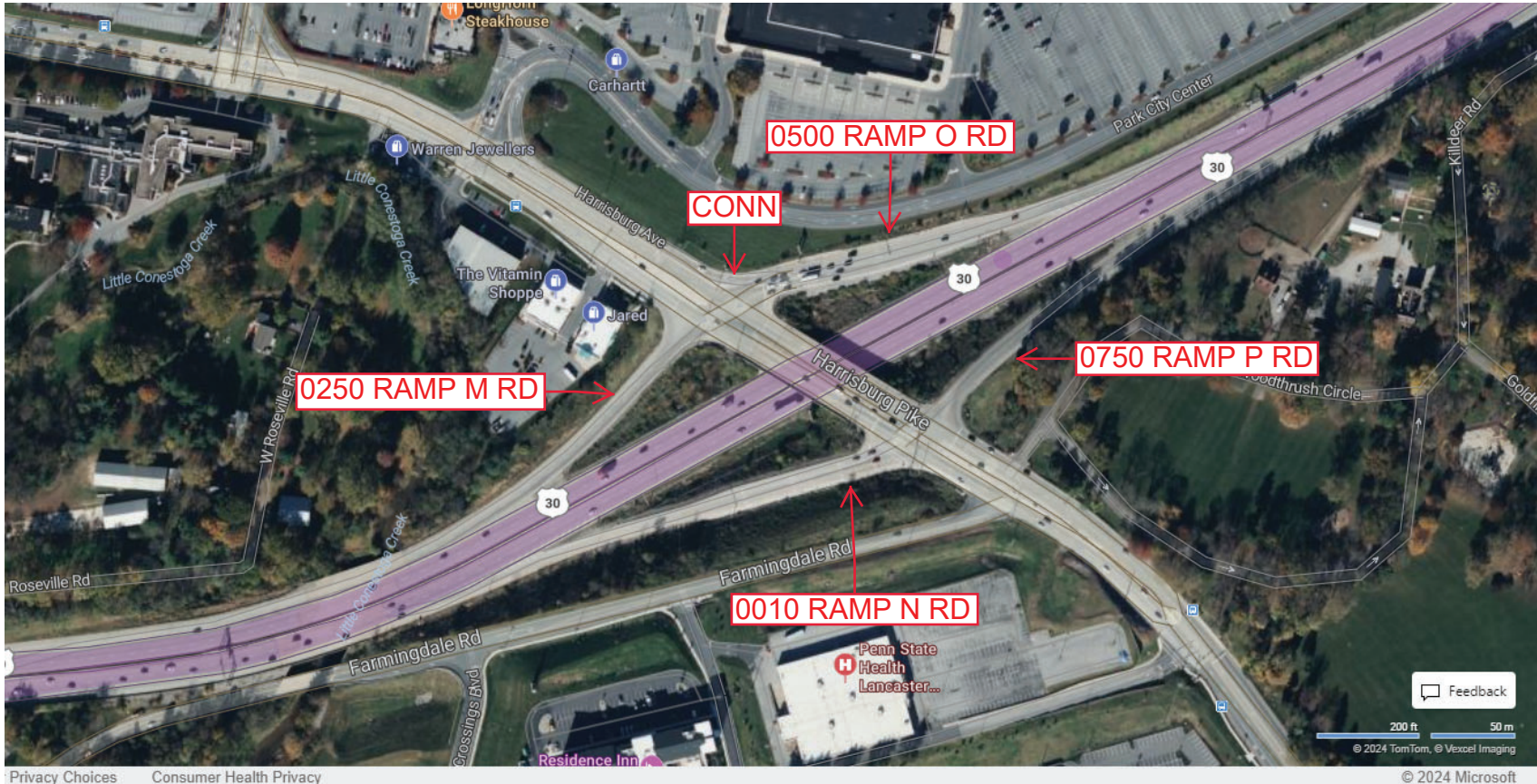
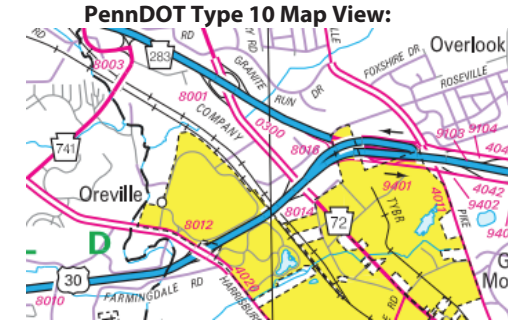
Intersecting SR's: US 30 Lincoln Hw & SR 4020 Harrisburg Pk

Ramp Segment Number and Ramp Segment Length Information:

Segment	Length	Segment	Length	Segment	Length	Segment	Length
0010	0708						
0250	0400						
0500	0561						
0750	0572						

Primary Route Interchange Exit Number

Secondary Route Interchange Exit Number



Privacy Choices Consumer Health Privacy

Feedback

200 ft 50 m

© 2024 TomTom, © Vexcel Imaging

© 2024 Microsoft

Last Date Modified:

Oct 4, 2024

County: 36

RMS Interchange Information

Print Form

Bureau of Maintenance & Operations
Asset Management Division



Interchange Number: 8013

Interchange Name: CLOVERLEAF ROAD INT

Intersecting SR's: PA 283 (PA 300) & SR 4025 Clover Leaf Rd

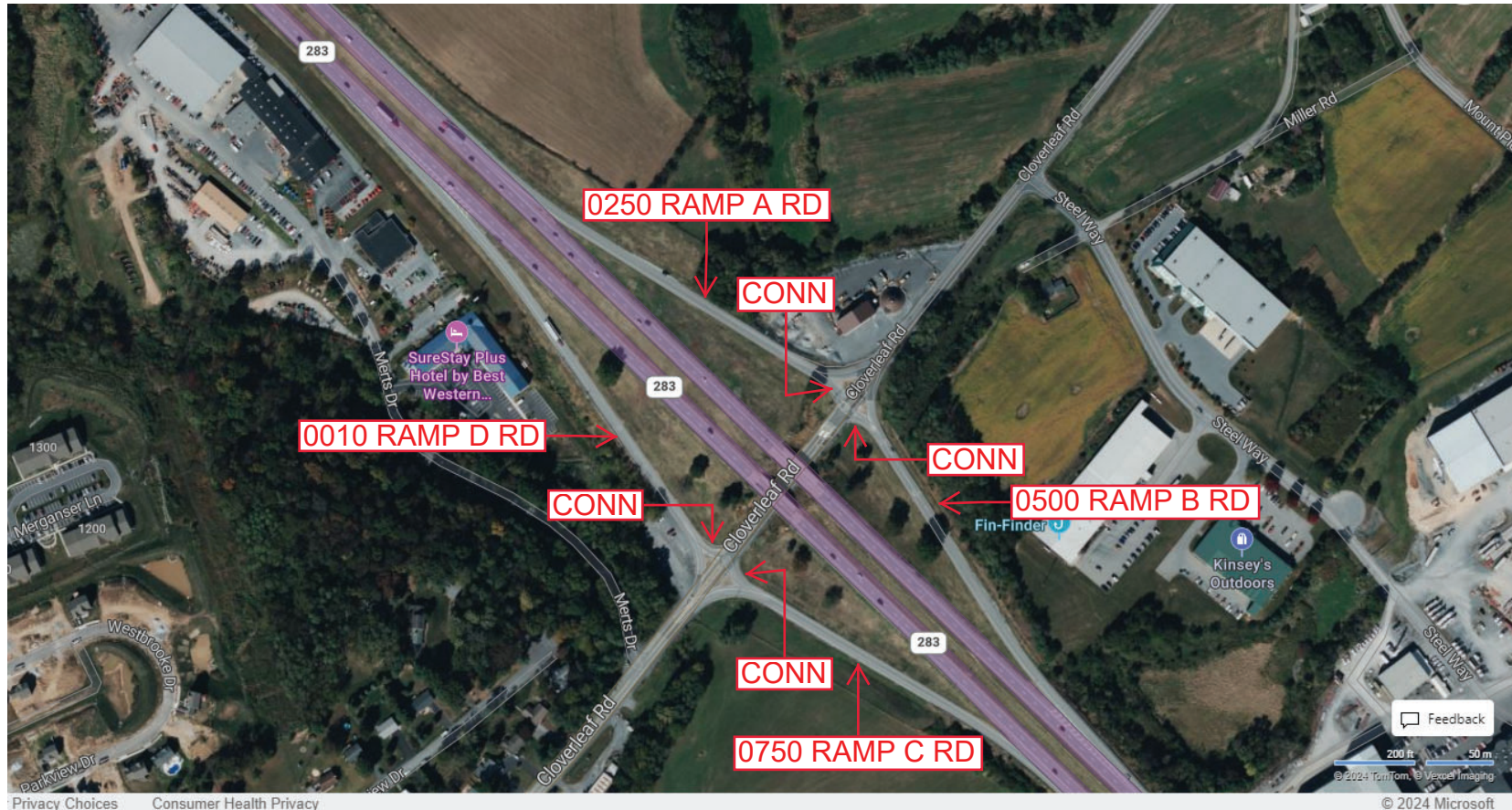
Ramp Segment Number and Ramp Segment Length Information:

Segment	Length	Segment	Length	Segment	Length	Segment	Length
0010	1060						
0250	0934						
0500	0897						
0750	0861						

Primary Route Interchange Exit Number

Secondary Route Interchange Exit Number

PennDOT Type 10 Map View:



Last Date Modified: Oct 9, 2024

County: 36

RMS Interchange Information

Print Form

Bureau of Maintenance & Operations
Asset Management Division



Interchange Number: 8014

Interchange Name: MANHEIM PIKE INT

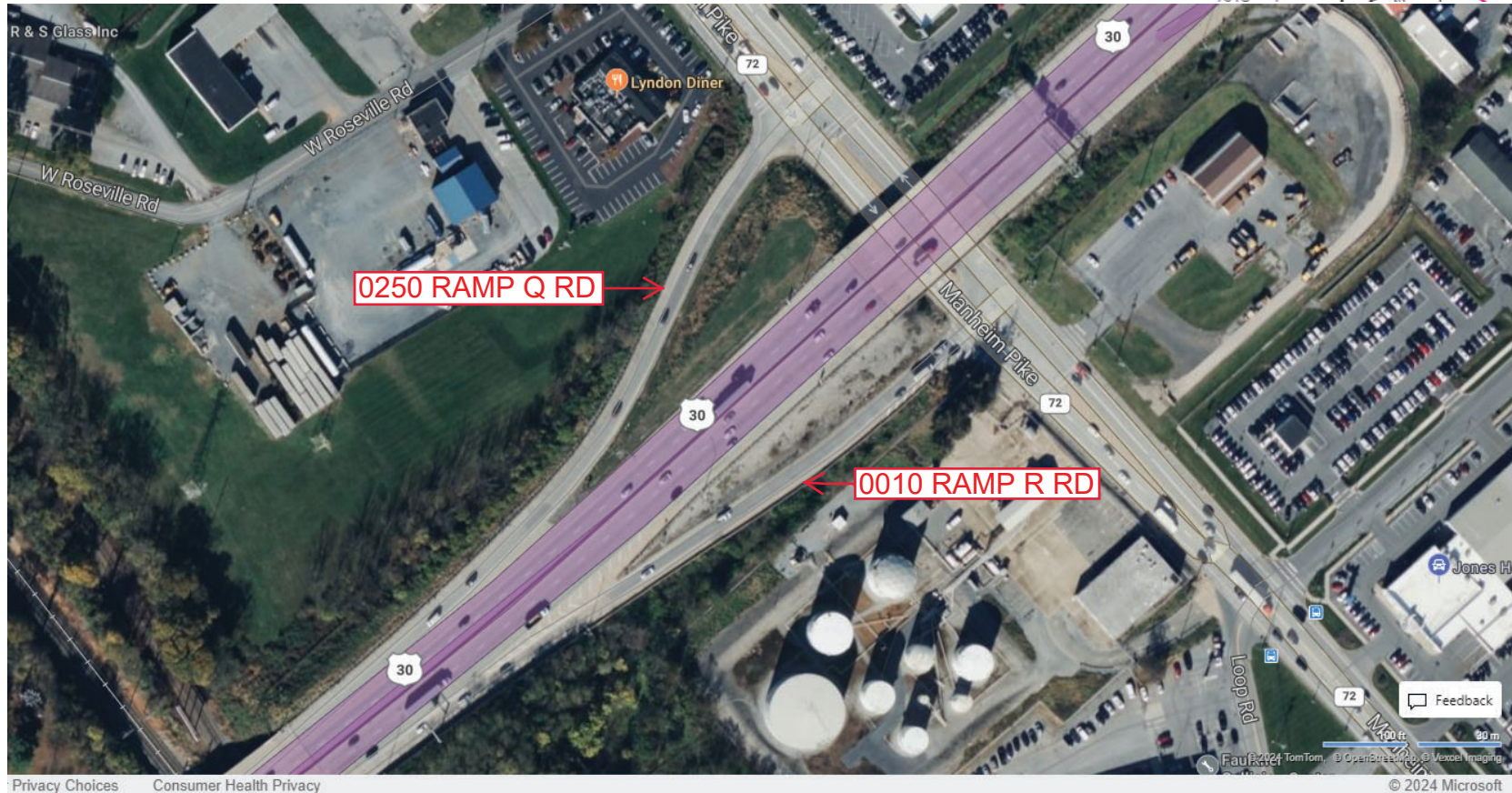
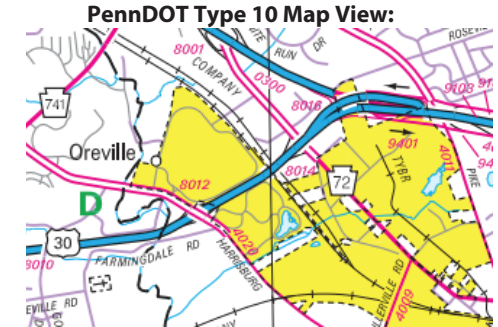
Intersecting SR's: US 30 Lincoln Hw & PA 72 Manheim Pk

Ramp Segment Number and Ramp Segment Length Information:

Segment	Length	Segment	Length	Segment	Length	Segment	Length
0010	0532						
0250	0558						

Primary Route Interchange Exit Number

Secondary Route Interchange Exit Number



Last Date Modified:

Oct 9, 2024

County: 36

RMS Interchange Information

Print Form

Bureau of Maintenance & Operations
Asset Management Division



Interchange Number: 8015

Interchange Name: HERSHEY ROAD INT

Intersecting SR's: PA 280 (PA300) & PA 743 Hershey Rd

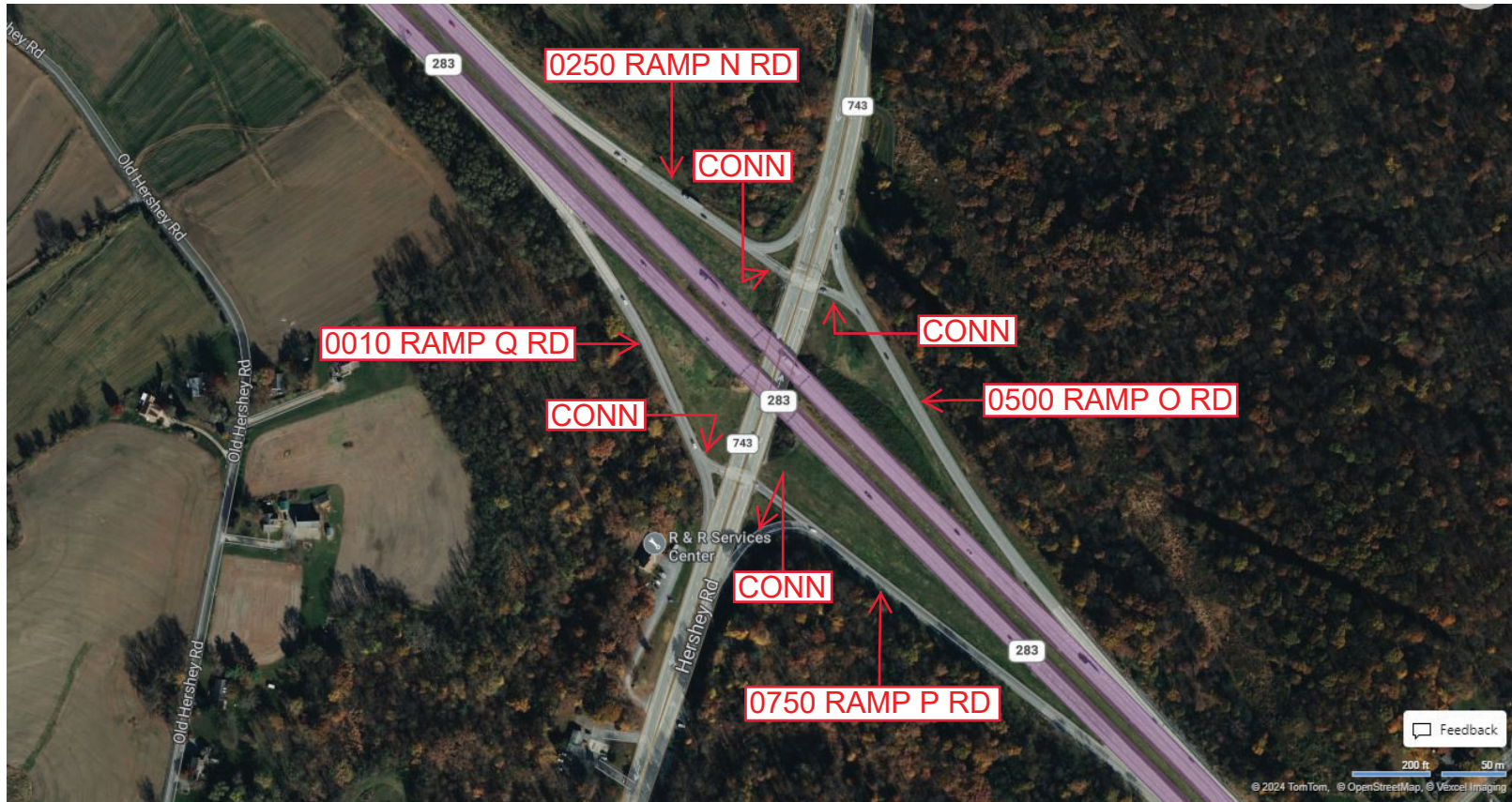
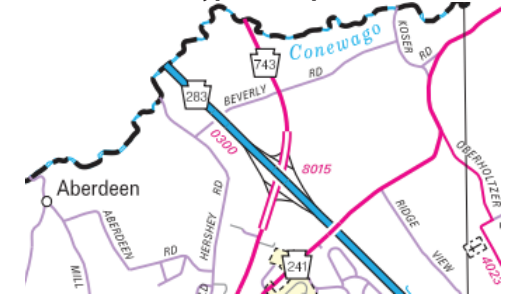
Ramp Segment Number and Ramp Segment Length Information:

Segment	Length	Segment	Length	Segment	Length	Segment	Length
0010	0829						
0250	0772						
0500	1146						
0750	1165						

Primary Route Interchange Exit Number

Secondary Route Interchange Exit Number

PennDOT Type 10 Map View:



Privacy Choices Consumer Health Privacy

Last Date Modified:

Oct 9, 2024

County: 36

RMS Interchange Information

Print Form

Interchange Number: 8016

Bureau of Maintenance & Operations
Asset Management Division



Interchange Name: US 30

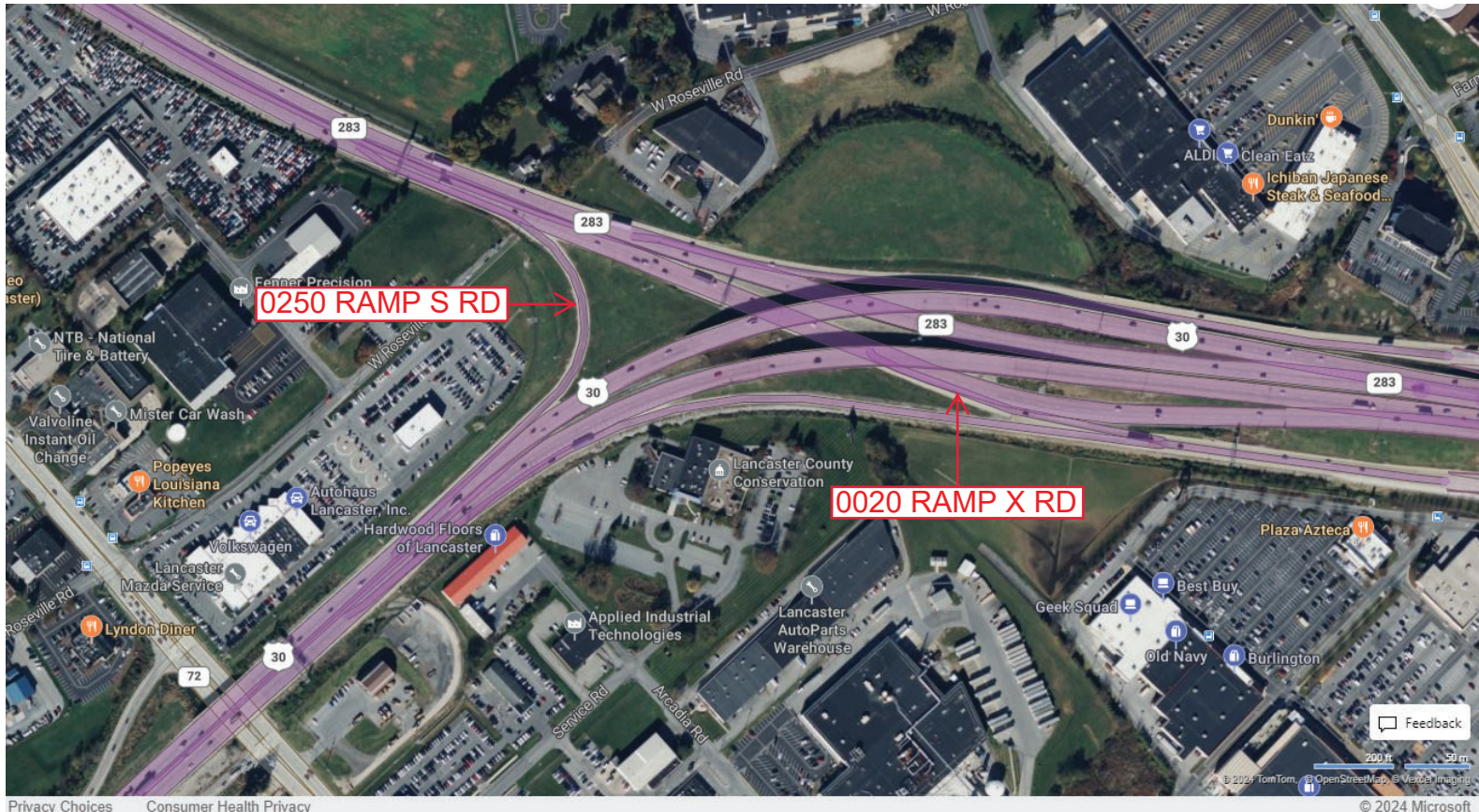
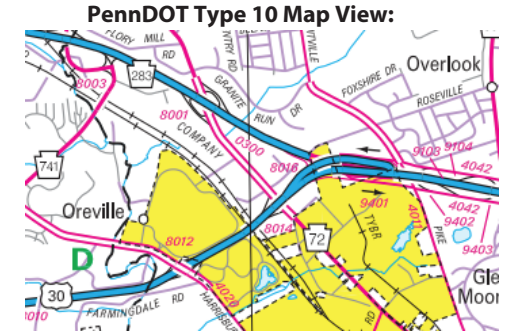
Intersecting SR's: US 30 Lincoln Hw, PA 300 (PA283) & SR 4042 Chester Rd

Ramp Segment Number and Ramp Segment Length Information:

Segment	Length	Segment	Length	Segment	Length	Segment	Length
0020	0460						
0250	0443						

Primary Route Interchange Exit Number

Secondary Route Interchange Exit Number



Privacy Choices Consumer Health Privacy

Last Date Modified:

Oct 9, 2024

County: 36

RMS Interchange Information

Print Form

Interchange Number: 8022

Bureau of Maintenance & Operations
Asset Management Division



Interchange Name: ROUTE 222

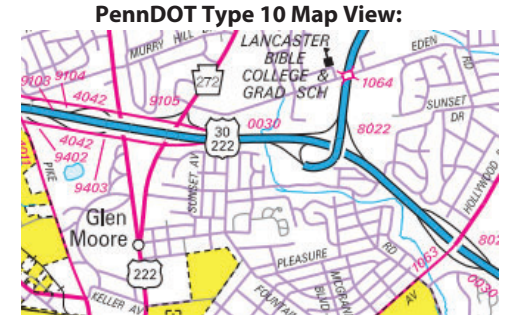
Intersecting SR's: US 30 Lincoln Hw US 222

Ramp Segment Number and Ramp Segment Length Information:

Segment	Length	Segment	Length	Segment	Length	Segment	Length
0010	2019						
0020	1876						
0250	1275						
0500	1337						

Primary Route Interchange Exit Number

Secondary Route Interchange Exit Number



Privacy Choices Consumer Health Privacy

© 2024 Microsoft

Last Date Modified: Oct 10, 2024

County: 36

RMS Interchange Information

Print Form

Bureau of Maintenance & Operations
Asset Management Division



Interchange Number: 8024

Interchange Name: NEW HOLLAND PIKE INT

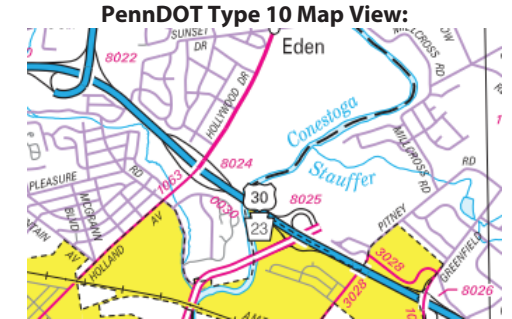
Intersecting SR's: US 30, PA 23 New Holland Pk & SR 1063 New Holland Pk

Ramp Segment Number and Ramp Segment Length Information:

Segment	Length	Segment	Length	Segment	Length	Segment	Length
0012	0810						
0252	0714						
0500	0851						
0752	0706						

Primary Route
Interchange Exit
Number

Secondary Route
Interchange Exit
Number



Privacy Choices Consumer Health Privacy

Feedback

200 ft 50 m

© 2024 Microsoft

Last Date Modified:

Oct 15, 2024

County: 36

RMS Interchange Information

Print Form

Bureau of Maintenance & Operations
Asset Management Division



Interchange Number: 8025

Interchange Name: ROUTE 23

Intersecting SR's: US 30 Lincoln Hw & PA 23

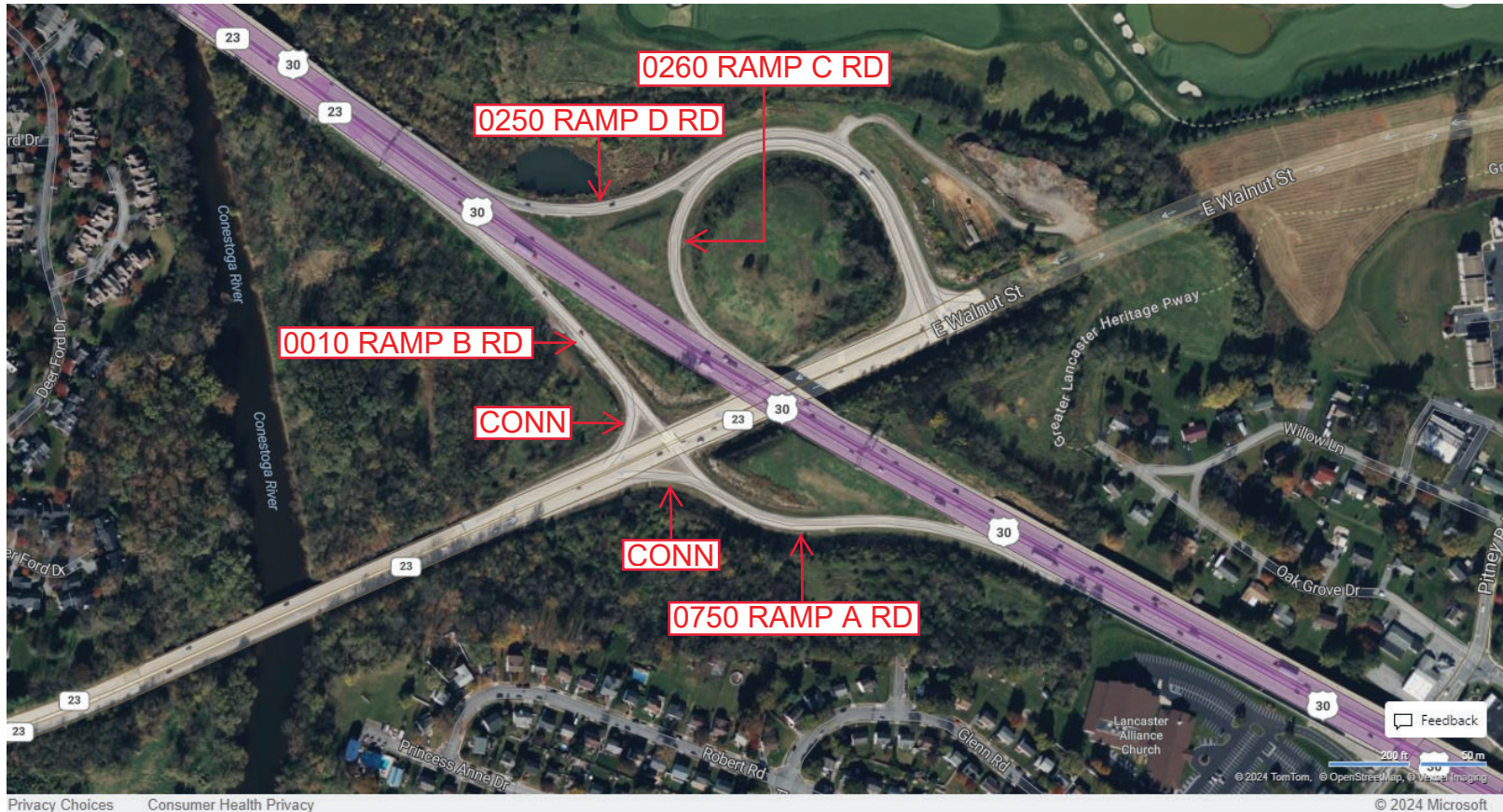
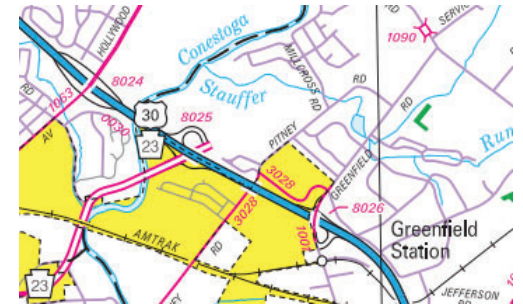
Ramp Segment Number and Ramp Segment Length Information:

Segment	Length	Segment	Length	Segment	Length	Segment	Length
0010	0614						
0250	1383						
0260	1240						
0750	0776						

Primary Route Interchange Exit Number

Secondary Route Interchange Exit Number

PennDOT Type 10 Map View:



Last Date Modified: Oct 15, 2024

County: 36

RMS Interchange Information

Print Form

Bureau of Maintenance & Operations
Asset Management Division



Interchange Number: 8026

Interchange Name: US 30 & GREENFIELD ROAD

Intersecting SR's: US 30 Lincoln Hw & SR 1001 Greenfield Rd

Ramp Segment Number and Ramp Segment Length Information:

Segment	Length	Segment	Length	Segment	Length	Segment	Length
0250	0517						
0510	0570						
0752	0695						
0762	0699						

Primary Route Interchange Exit Number

Secondary Route Interchange Exit Number

PennDOT Type 10 Map View:



Last Date Modified:

Oct 15, 2024

County: 36

RMS Interchange Information

Print Form

Bureau of Maintenance & Operations
Asset Management Division



Interchange Number: 8028

Interchange Name: OLD PHILADELPHIA PIKE

Intersecting SR's: US 30 Lincoln Hw & PA 340 Old Philadelphia Pk

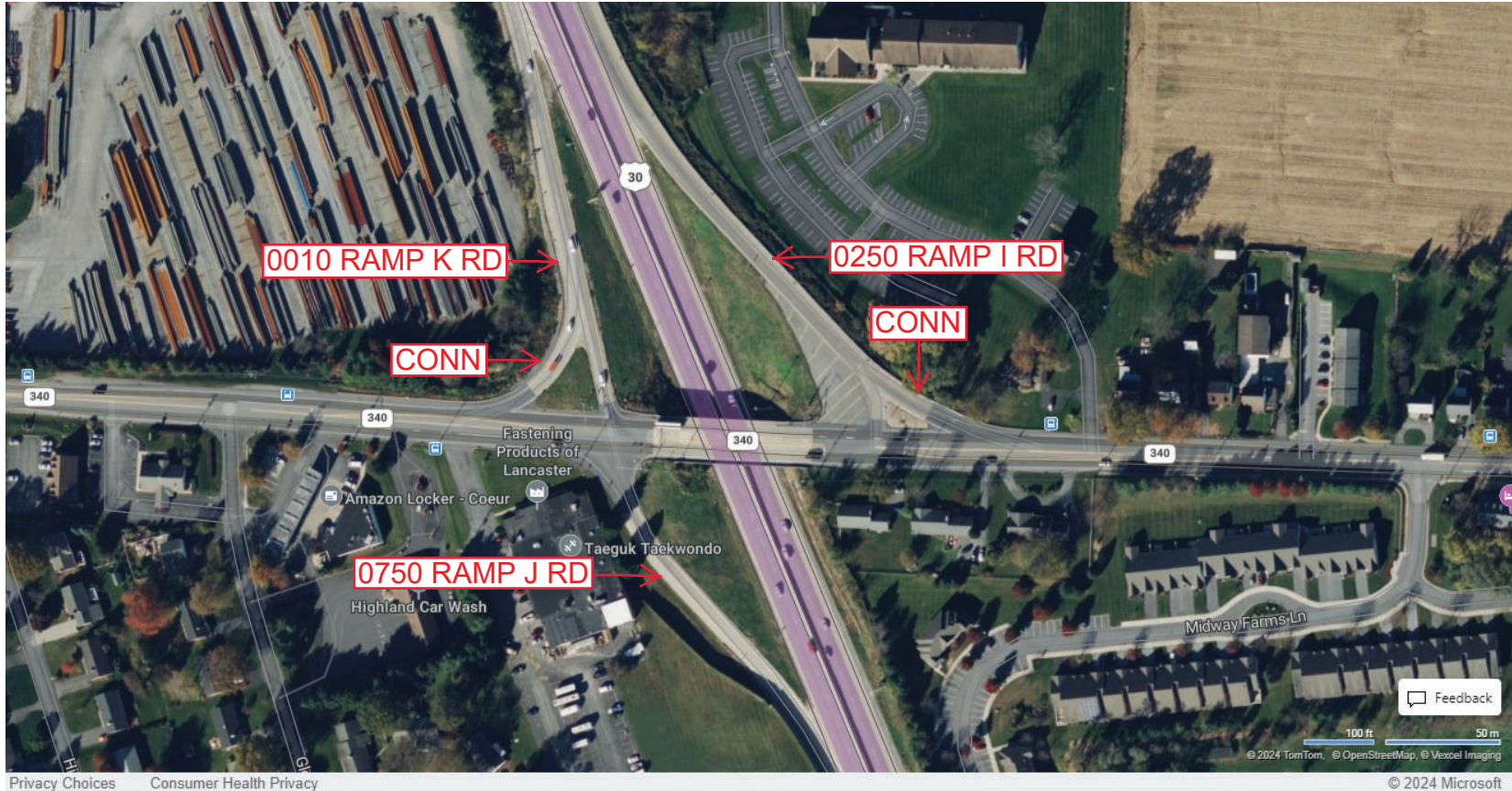
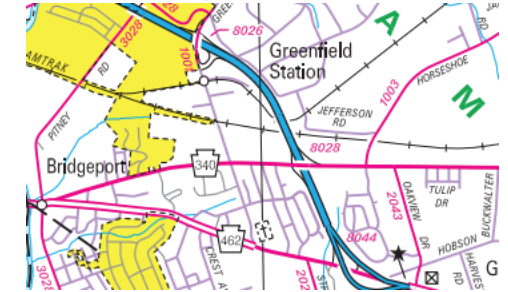
Ramp Segment Number and Ramp Segment Length Information:

Segment	Length	Segment	Length	Segment	Length	Segment	Length
0010	0541						
0250	0582						
0750	0464						

Primary Route Interchange Exit Number

Secondary Route Interchange Exit Number

PennDOT Type 10 Map View:



Privacy Choices Consumer Health Privacy

Last Date Modified: Oct 15, 2024

County: 36

RMS Interchange Information

Print Form

Bureau of Maintenance & Operations
Asset Management Division



Interchange Number: 8030

Interchange Name: OREGON PIKE & BUTTER ROAD

Intersecting SR's: US 222, PA 272, SR 1029 Butter Rd & T713 Pinetown Rd

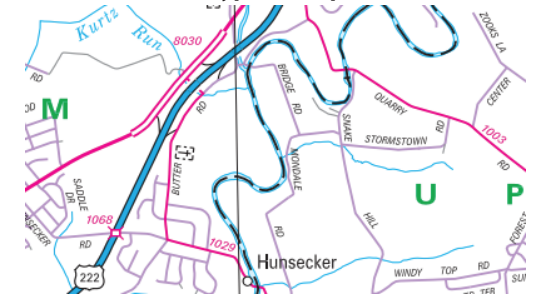
Ramp Segment Number and Ramp Segment Length Information:

Segment	Length	Segment	Length	Segment	Length	Segment	Length
0010	0453						
0250	0663						
0500	0598						
0750	0357						

Primary Route Interchange Exit Number

Secondary Route Interchange Exit Number

PennDOT Type 10 Map View:



County: 36

RMS Interchange Information

Bureau of Maintenance & Operations
Asset Management Division

Print Form



Interchange Number: 8032

Interchange Name: NEWPORT ROAD ROUTE 772

Intersecting SR's: US 222 & PA 772 Newport Rd

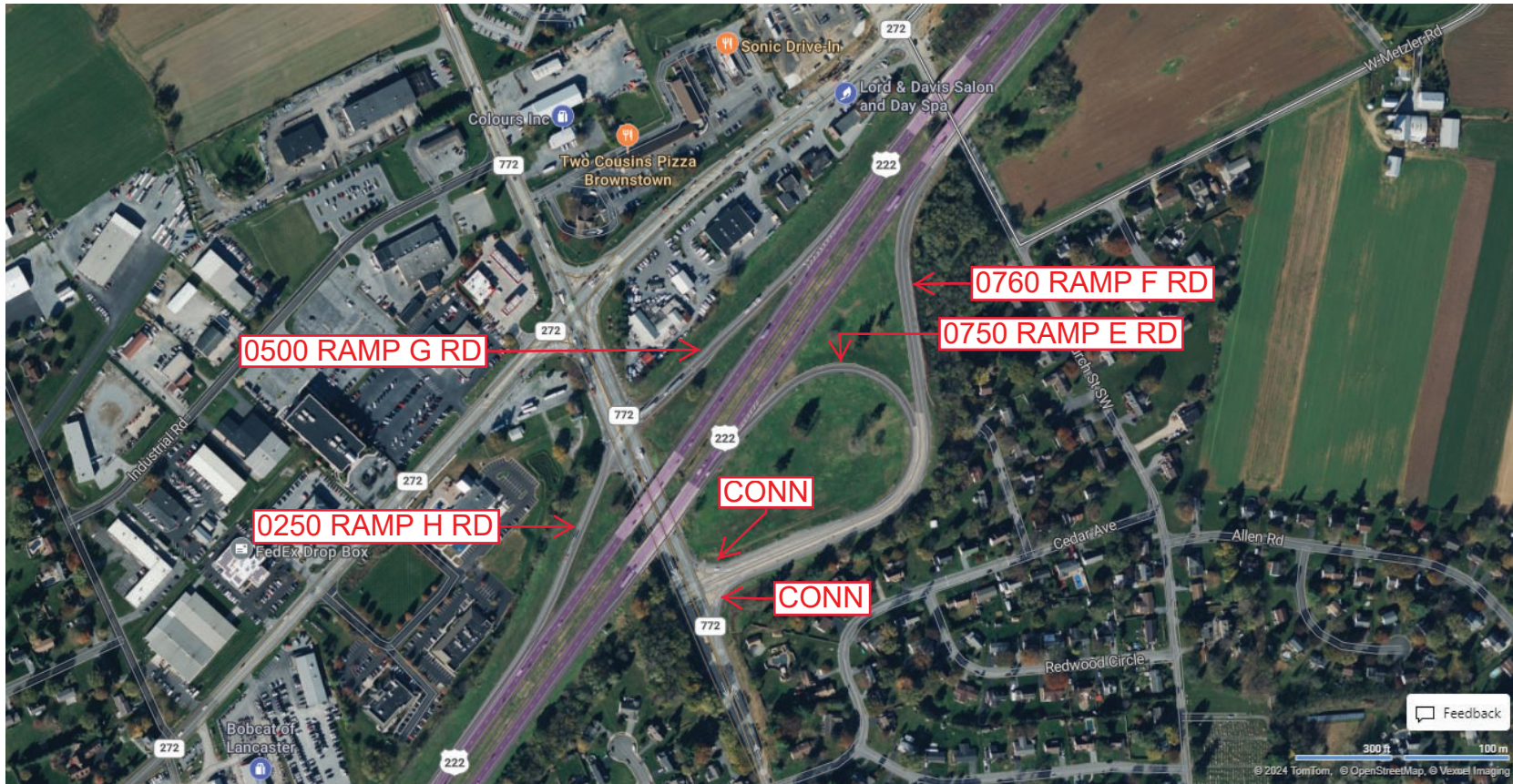
Ramp Segment Number and Ramp Segment Length Information:

Segment	Length	Segment	Length	Segment	Length	Segment	Length
0250	0641						
0500	0724						
0750	1527						
0760	1670						

Primary Route Interchange Exit Number

Secondary Route Interchange Exit Number

PennDOT Type 10 Map View:



Privacy Choices Consumer Health Privacy

Last Date Modified:

Oct 16, 2024

County: 36

RMS Interchange Information

Print Form

Interchange Number: 8034

Bureau of Maintenance & Operations
Asset Management Division



Interchange Name: US 322 & US 222

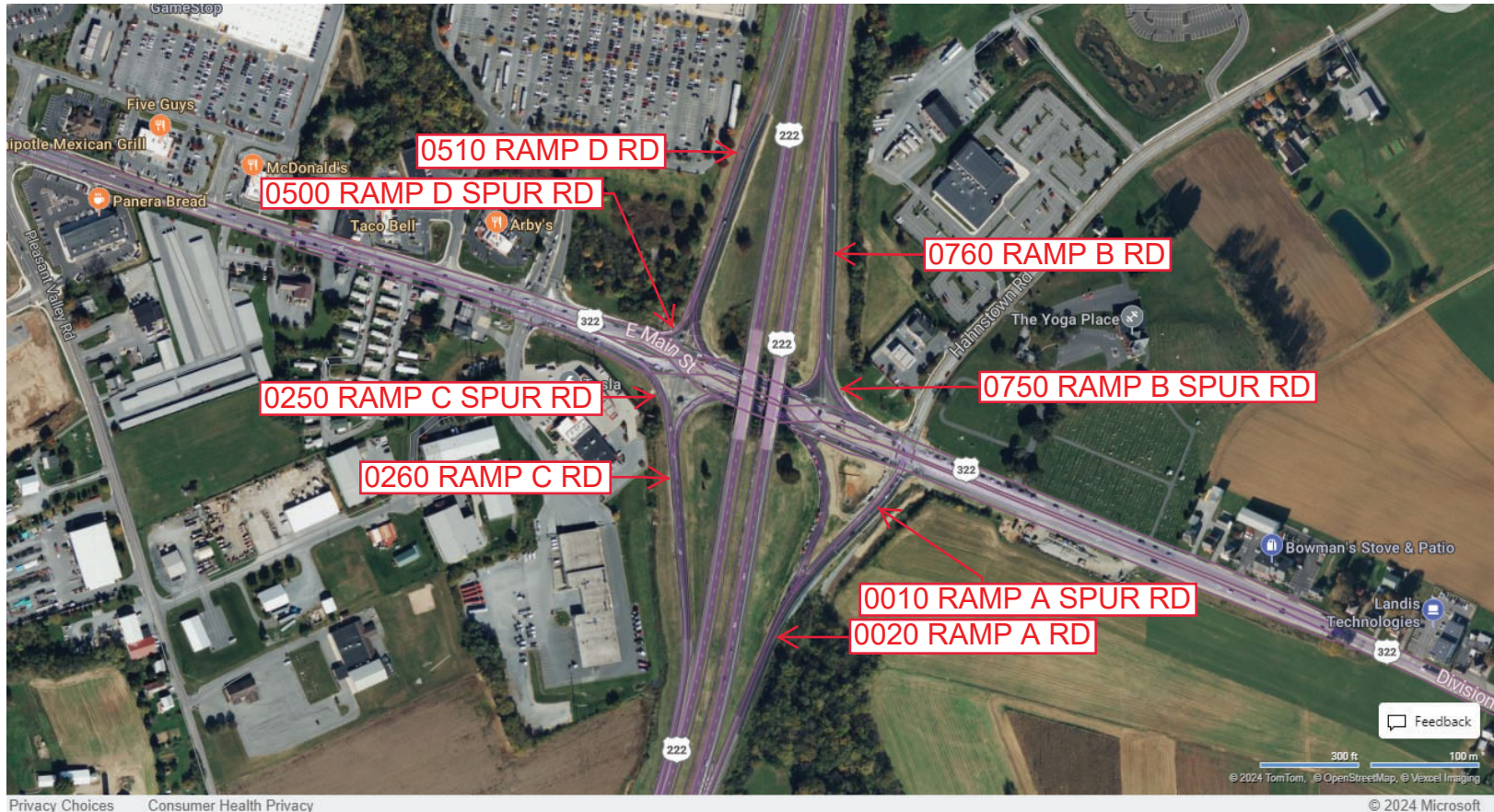
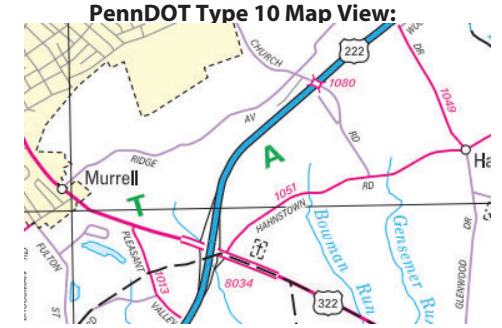
Intersecting SR's: US 322 28TH Division Hw & US 222

Ramp Segment Number and Ramp Segment Length Information:

Segment	Length	Segment	Length	Segment	Length	Segment	Length
0010	0412	0510	1102				
0020	1172	0750	0124				
0250	0174	0760	0862				
0260	0832						
0500	0082						

Primary Route Interchange Exit Number

Secondary Route Interchange Exit Number



Last Date Modified: Oct 16, 2024

County: 36

RMS Interchange Information

Print Form

Bureau of Maintenance & Operations
Asset Management Division



Interchange Number: 8036

Interchange Name: PA 72 & TURNPIKE

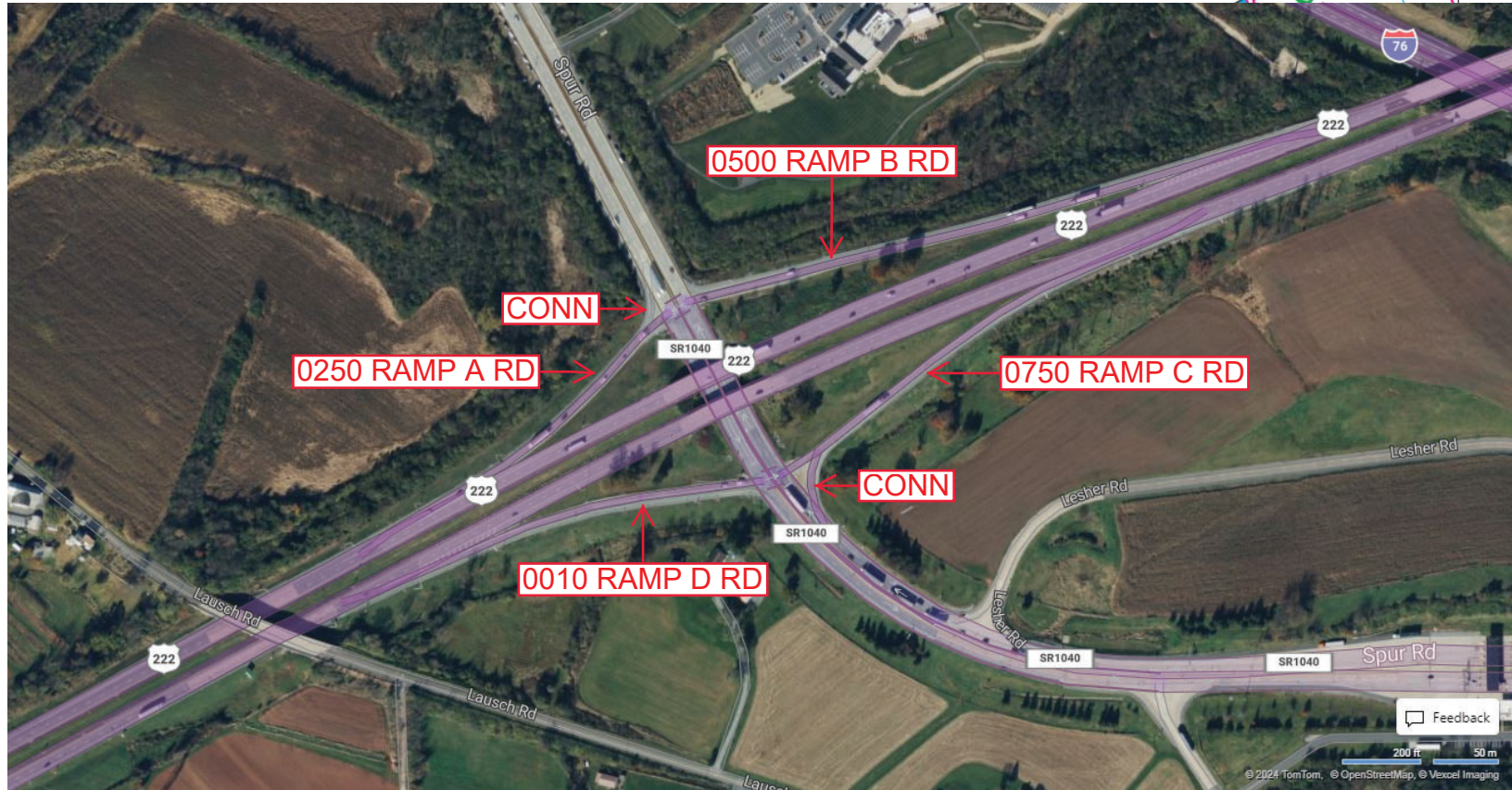
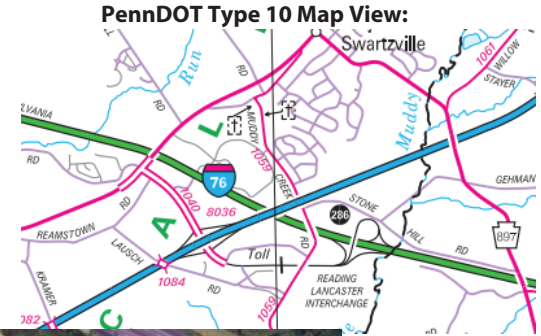
Intersecting SR's: US 222 & SR 1040 Col Howard Bl

Ramp Segment Number and Ramp Segment Length Information:

Segment	Length	Segment	Length	Segment	Length	Segment	Length
0010	0653						
0250	0552						
0500	1239						
0750	0832						

Primary Route Interchange Exit Number

Secondary Route Interchange Exit Number



Privacy Choices Consumer Health Privacy

Feedback 200 ft 50 m © 2024 TomTom, © OpenStreetMap, © Vexcel Imaging

© 2024 Microsoft

Last Date Modified:

Oct 16, 2024

County: 36

RMS Interchange Information

Print Form

Bureau of Maintenance & Operations
Asset Management Division



Interchange Number: 8038

Interchange Name: EPHRATA INT

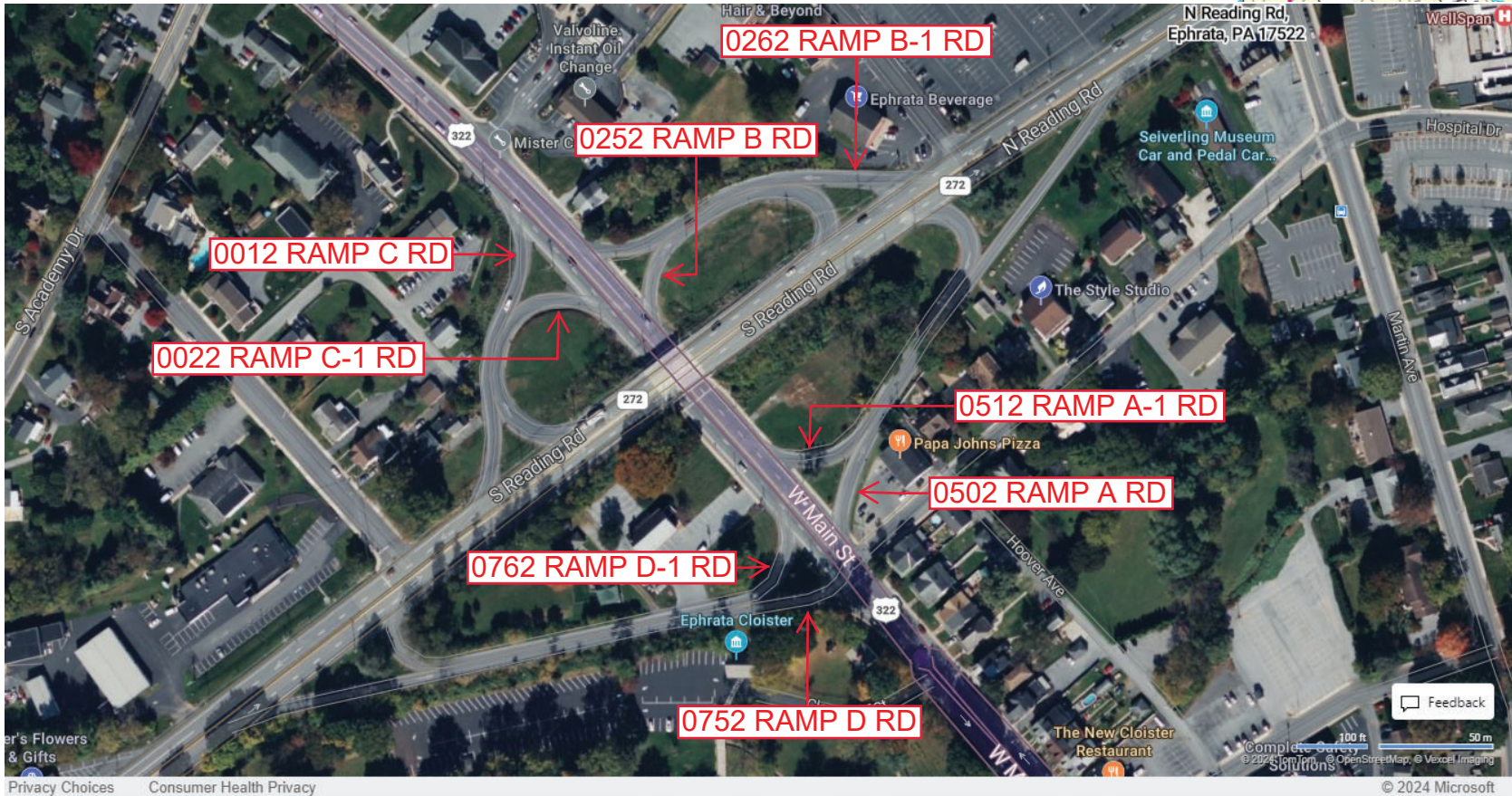
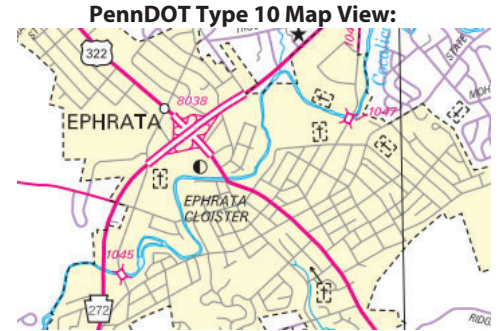
Intersecting SR's: US 322 Main St & PA 272 Reading Rd

Ramp Segment Number and Ramp Segment Length Information:

Segment	Length	Segment	Length	Segment	Length	Segment	Length
0012	0350	0512	0487				
0022	0282	0752	0819				
0252	0410	0762	0665				
0262	0368						
0502	0696						

Primary Route Interchange Exit Number

Secondary Route Interchange Exit Number



Last Date Modified: Oct 16, 2024

County: 36

RMS Interchange Information

Print Form

Bureau of Maintenance & Operations
Asset Management Division



Interchange Number: 8040

Interchange Name: LINCOLN HIGHWAY & OREGON PIKE

Intersecting SR's: US 30 Lincoln Hw, PA 272 Oregon Pk & SR 4042 York Rd

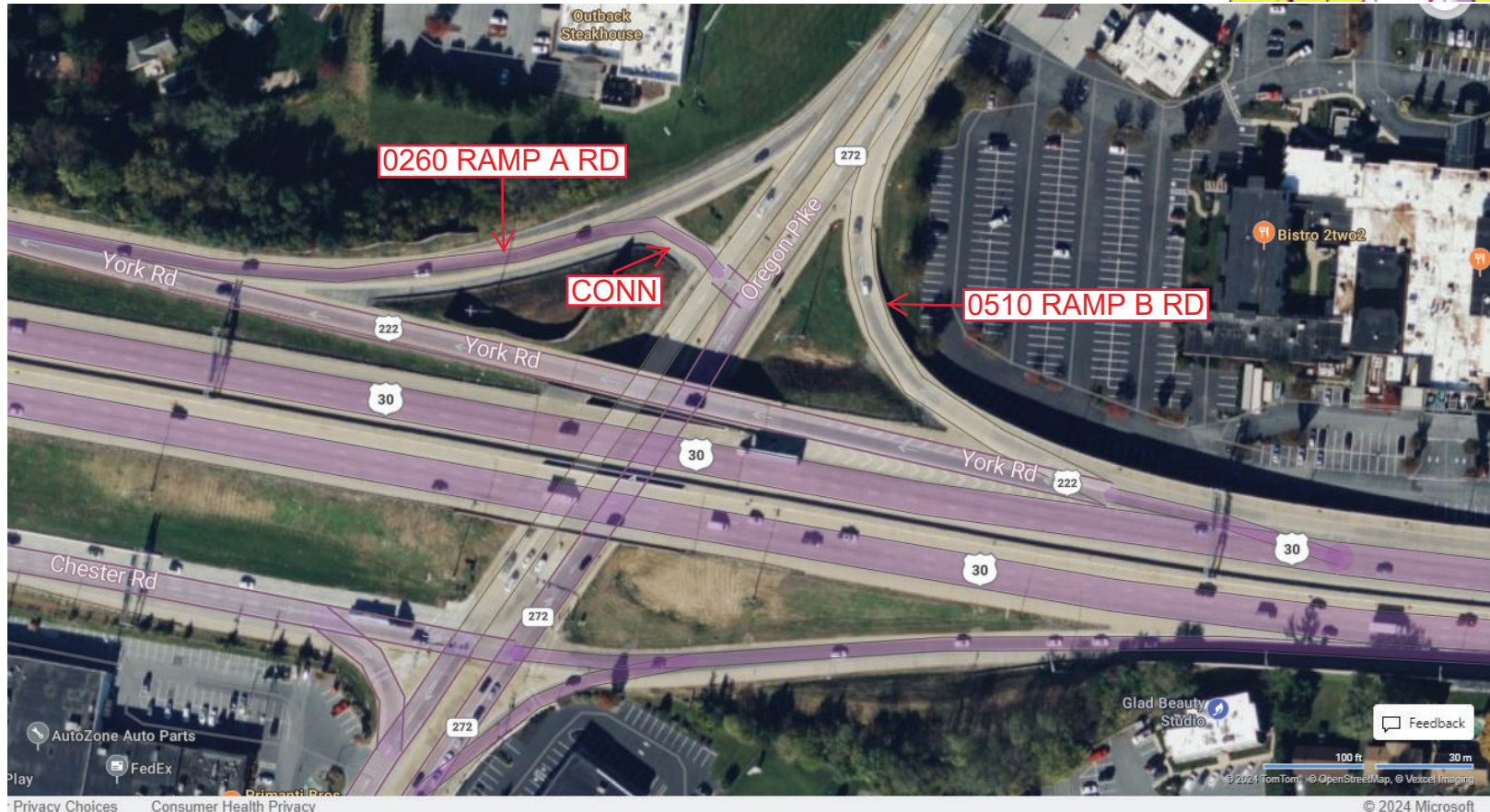
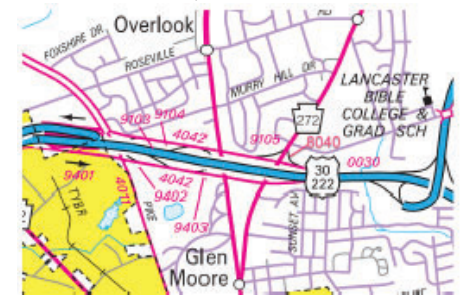
Ramp Segment Number and Ramp Segment Length Information:

Segment	Length	Segment	Length	Segment	Length	Segment	Length
0260	0425						
0510	0223						

Primary Route
Interchange Exit
Number

Secondary Route
Interchange Exit
Number

PennDOT Type 10 Map View:



Last Date Modified:

Oct 16, 2024

County: 36

RMS Interchange Information

Print Form

Interchange Number: 8044

Bureau of Maintenance & Operations
Asset Management Division



Interchange Name: US 30 Lincoln Hw & PA 462 SPLIT

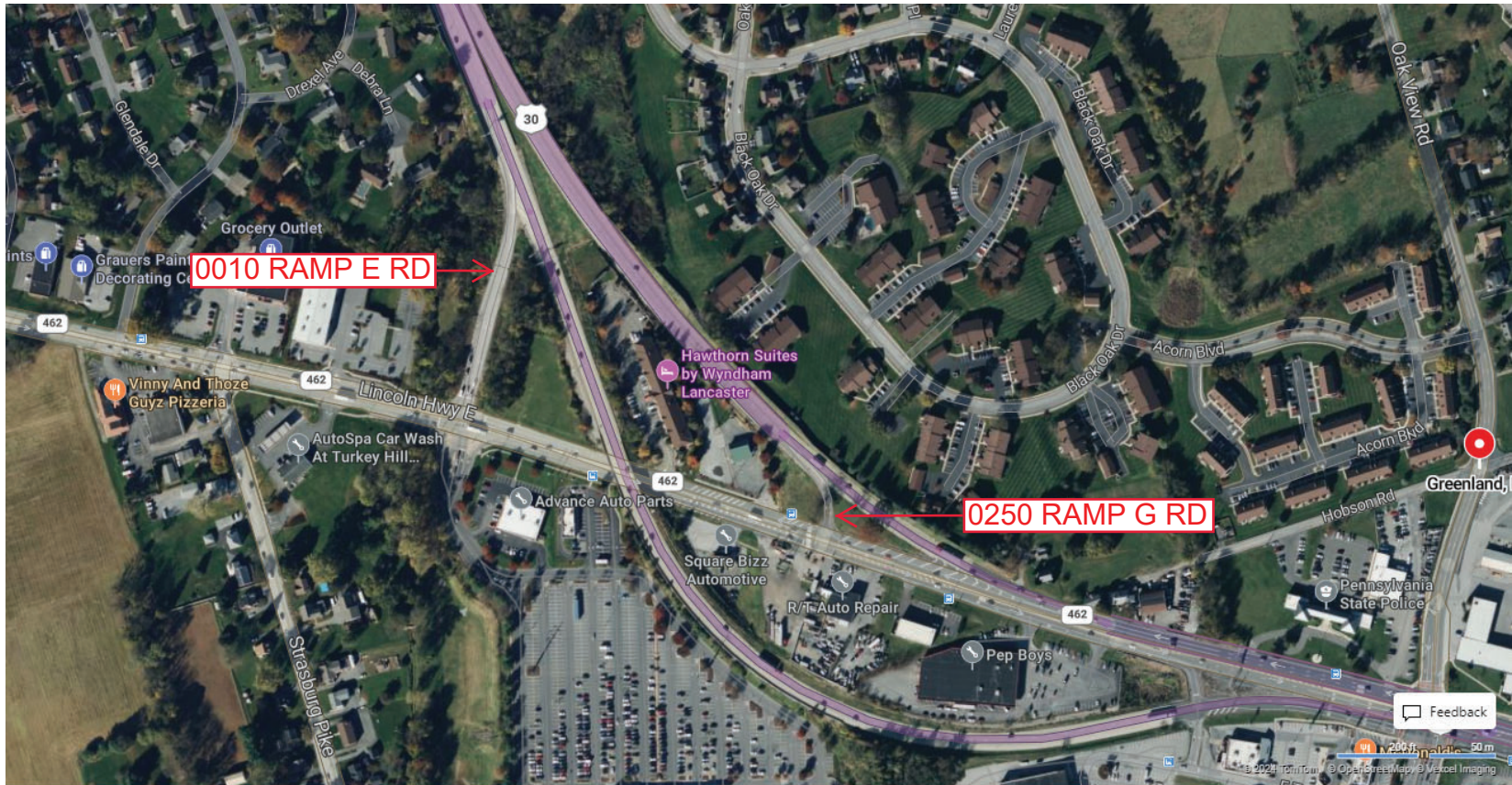
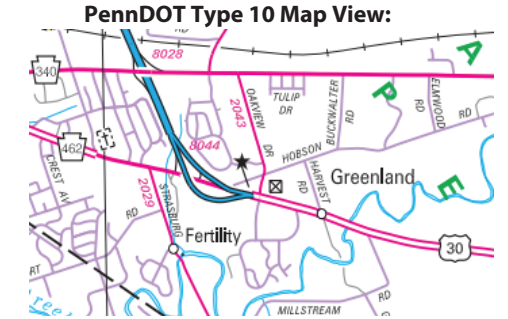
Intersecting SR's: US 30 Lincoln Hw & PA 462 Lincoln Wy

Ramp Segment Number and Ramp Segment Length Information:

Segment	Length	Segment	Length	Segment	Length	Segment	Length
0010	0522						
0250	0114						

Primary Route Interchange Exit Number

Secondary Route Interchange Exit Number



Privacy Choices Consumer Health Privacy

© 2024 Microsoft

Last Date Modified:

Oct 18, 2024

County: 36

RMS Interchange Information

Print Form

Bureau of Maintenance & Operations
Asset Management Division



Interchange Number: 9102

Interchange Name: HARRISBURG AVE & DILLERVILLE ROAD

Intersecting SR's: SR 4009 Dillerville Rd & SR 4020 Harrisburg Av

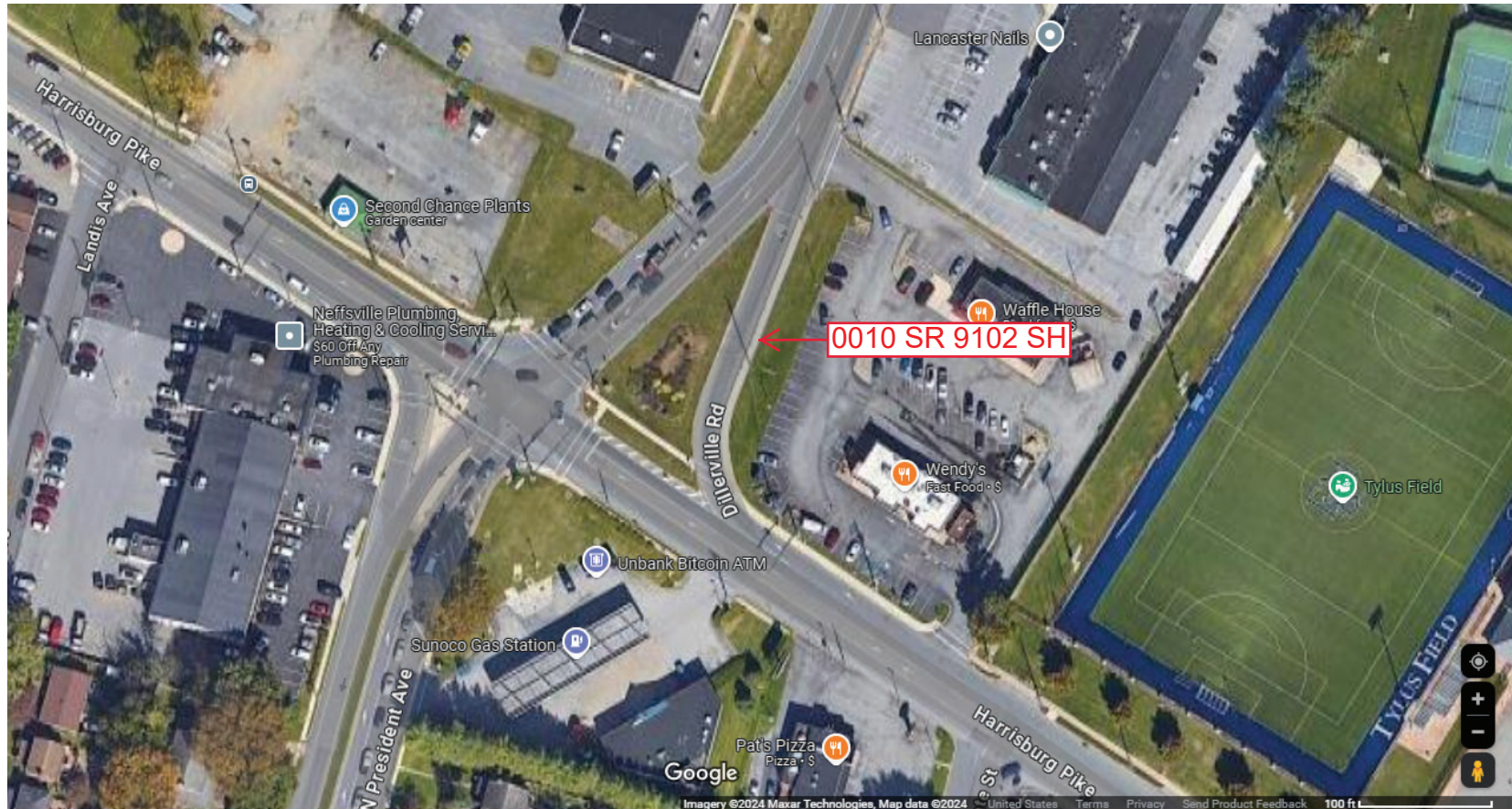
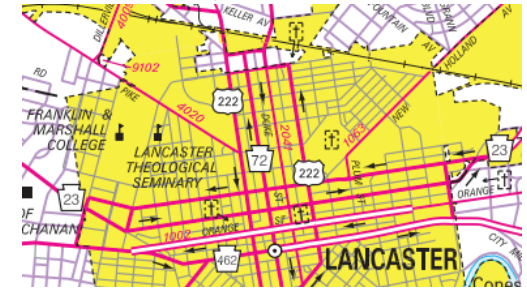
Ramp Segment Number and Ramp Segment Length Information:

Segment	Length	Segment	Length	Segment	Length	Segment	Length
0010	0232						

Primary Route Interchange Exit Number

Secondary Route Interchange Exit Number

PennDOT Type 10 Map View:



Last Date Modified:

Oct 22, 2024

County: 36

RMS Interchange Information

Print Form

Interchange Number: 9104

Bureau of Maintenance & Operations
Asset Management Division



Interchange Name: US 30 & SR 4042

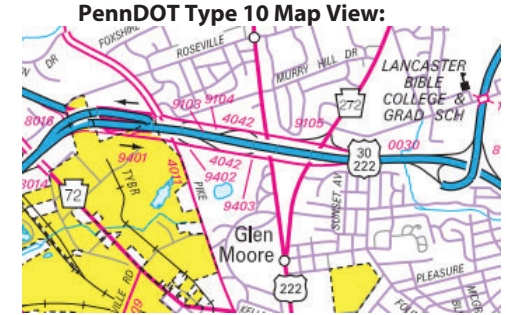
Intersecting SR's: US 30 Lincoln Hw & SR 4042 York Rd

Ramp Segment Number and Ramp Segment Length Information:

Segment	Length	Segment	Length	Segment	Length	Segment	Length
0010	0191						

Primary Route Interchange Exit Number

Secondary Route Interchange Exit Number



Last Date Modified:

Oct 22, 2024

County: 36

RMS Interchange Information

Print Form

Bureau of Maintenance & Operations
Asset Management Division



Interchange Number: 9106

Interchange Name: TO LITITZ PIKE

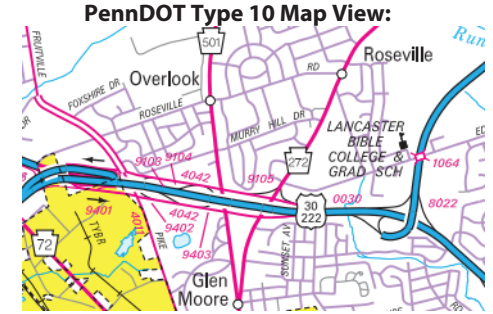
Intersecting SR's: US 30 Lincoln Hw & SR 4042 Chester Rd

Ramp Segment Number and Ramp Segment Length Information:

Segment	Length	Segment	Length	Segment	Length	Segment	Length
0010	0031						

Primary Route Interchange Exit Number

Secondary Route Interchange Exit Number



Last Date Modified: Oct 23, 2024

County: 36

RMS Interchange Information

Print Form

Bureau of Maintenance & Operations
Asset Management Division



Interchange Number: 9108

Interchange Name: BEAVER VALLEY PIKE & REFTON ROAD

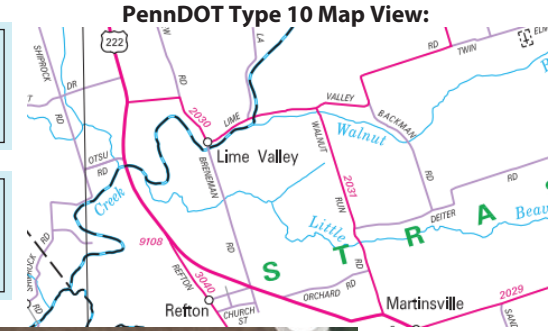
Intersecting SR's: US 222 Beaver Valley Pk & SR 3040 Refton Rd

Ramp Segment Number and Ramp Segment Length Information:

Segment	Length	Segment	Length	Segment	Length	Segment	Length
0010	0231						

Primary Route
Interchange Exit
Number

Secondary Route
Interchange Exit
Number



Privacy Choices Consumer Health Privacy

Feedback
100 ft 30 m
© 2024 TomTom, © OpenStreetMap, © Vexxel Imaging

© 2024 Microsoft

Last Date Modified:

Oct 23, 2024

County: 36

RMS Interchange Information

Bureau of Maintenance & Operations
Asset Management Division

Print Form



Interchange Number: 9401

Interchange Name: CHESTER ROAD & YORK ROAD LOOP

Intersecting SR's: SR 4042 Chester Rd & York Rd

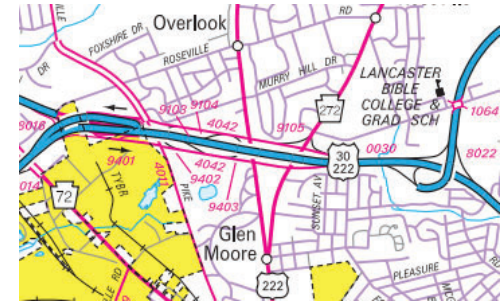
Ramp Segment Number and Ramp Segment Length Information:

Segment	Length	Segment	Length	Segment	Length	Segment	Length
0010	0365						

Primary Route Interchange Exit Number

Secondary Route Interchange Exit Number

PennDOT Type 10 Map View:



Last Date Modified:

Oct 23, 2024

County: 36

RMS Interchange Information

Print Form

Bureau of Maintenance & Operations
Asset Management Division



Interchange Number: 9402

Interchange Name: CHESTER ROAD & YORK ROAD LOOP

Intersecting SR's: SR 4042 York Rd & Chester Rd

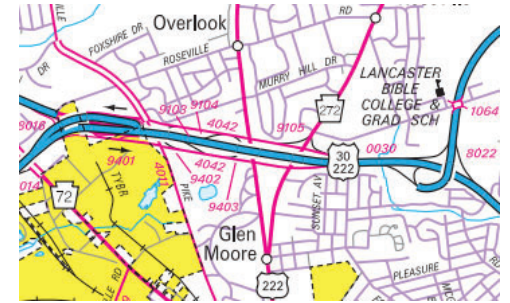
Ramp Segment Number and Ramp Segment Length Information:

Segment	Length	Segment	Length	Segment	Length	Segment	Length
0010	0400						

Primary Route Interchange Exit Number

Secondary Route Interchange Exit Number

PennDOT Type 10 Map View:



Last Date Modified:

Oct 24, 2024

County: 36

RMS Interchange Information

Bureau of Maintenance & Operations
Asset Management Division

Print Form



Interchange Number: 9403

Interchange Name: CHESTER ROAD & YORK ROAD LOOP

Intersecting SR's: SR 4042 Chester Rd & York Rd

Ramp Segment Number and Ramp Segment Length Information:

Segment	Length	Segment	Length	Segment	Length	Segment	Length
0010	0341						

Primary Route Interchange Exit Number

Secondary Route Interchange Exit Number

PennDOT Type 10 Map View:



Last Date Modified:

Oct 24, 2024

County: 36

RMS Interchange Information

Bureau of Maintenance & Operations
Asset Management Division

Print Form



Interchange Number: 9405

Interchange Name: WILLOW STREET PIKE JUGHANDLE

Intersecting SR's: PA 272 Willow Street Pk

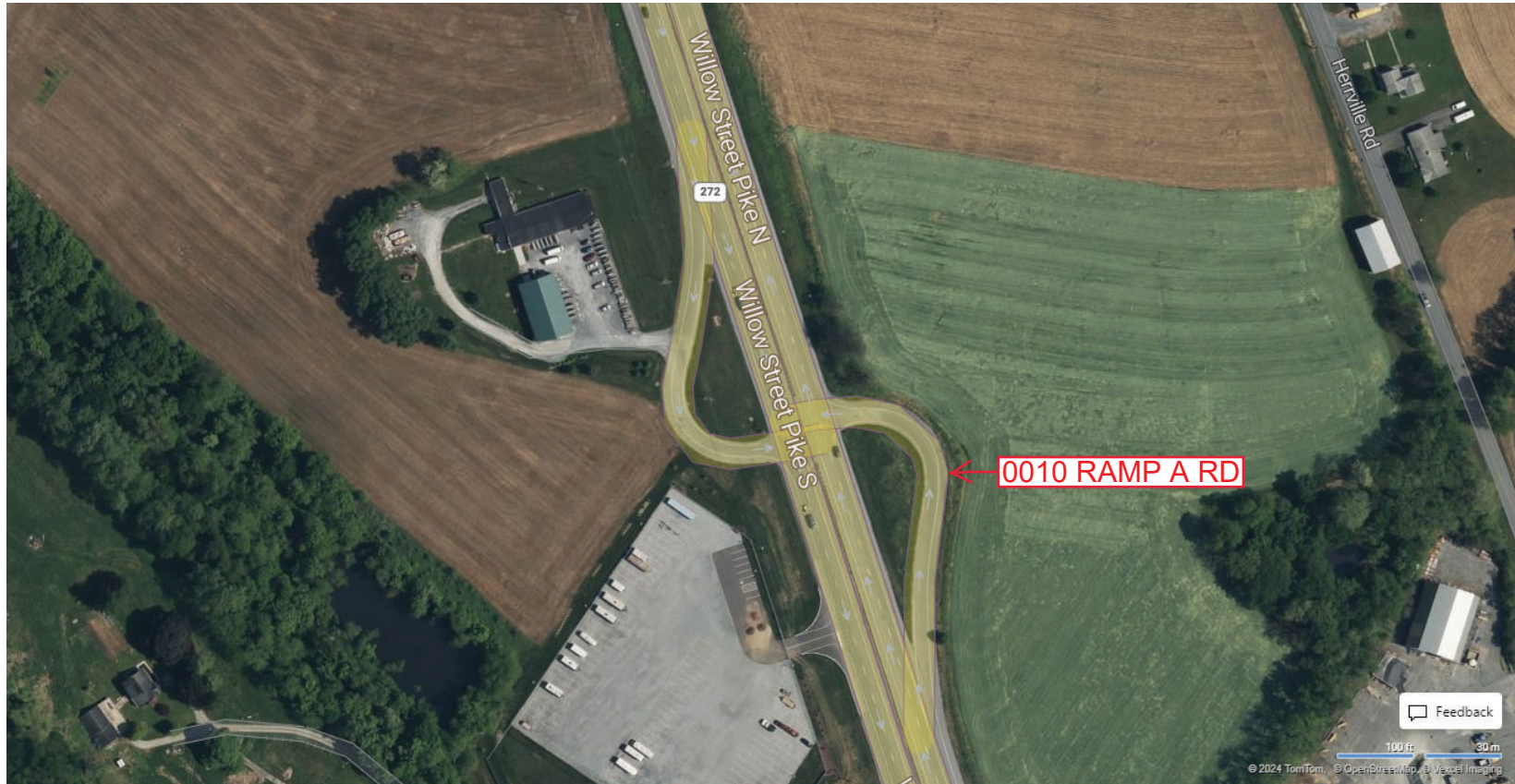
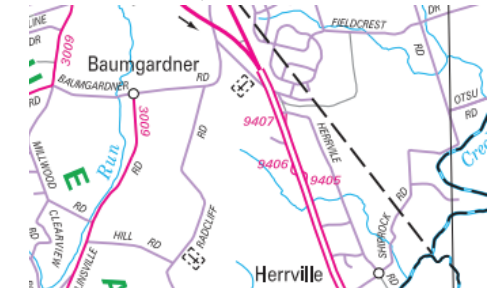
Ramp Segment Number and Ramp Segment Length Information:

Segment	Length	Segment	Length	Segment	Length	Segment	Length
0010	0402						

Primary Route Interchange Exit Number

Secondary Route Interchange Exit Number

PennDOT Type 10 Map View:



Privacy Choices Consumer Health Privacy

Feedback 100 ft 30m © 2024 TomTom © OpenStreetMap © Vexcel Imaging © 2024 Microsoft

Last Date Modified:

Oct 28, 2024

County: 36

RMS Interchange Information

Print Form

Bureau of Maintenance & Operations
Asset Management Division



Interchange Number: 9406

Interchange Name: WILLOW STREET PIKE JUGHANDLE

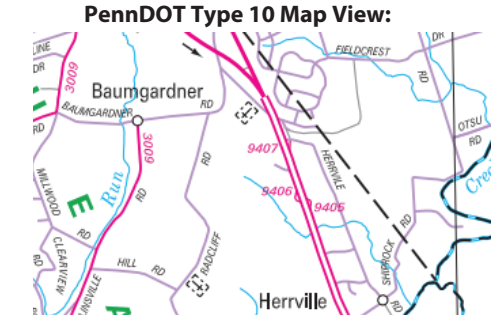
Intersecting SR's: PA 272 Willow Street Pk

Ramp Segment Number and Ramp Segment Length Information:

Segment	Length	Segment	Length	Segment	Length	Segment	Length
0010	0337						

Primary Route Interchange Exit Number

Secondary Route Interchange Exit Number



Privacy Choices Consumer Health Privacy

Feedback 100 ft 30m © 2024 TomTom © OpenStreetMap © Vexcel Imaging © 2024 Microsoft

Last Date Modified: Oct 28, 2024

County: 36

RMS Interchange Information

Print Form

Bureau of Maintenance & Operations
Asset Management Division



Interchange Number: 9407

Interchange Name: WILLOW STREET PIKE

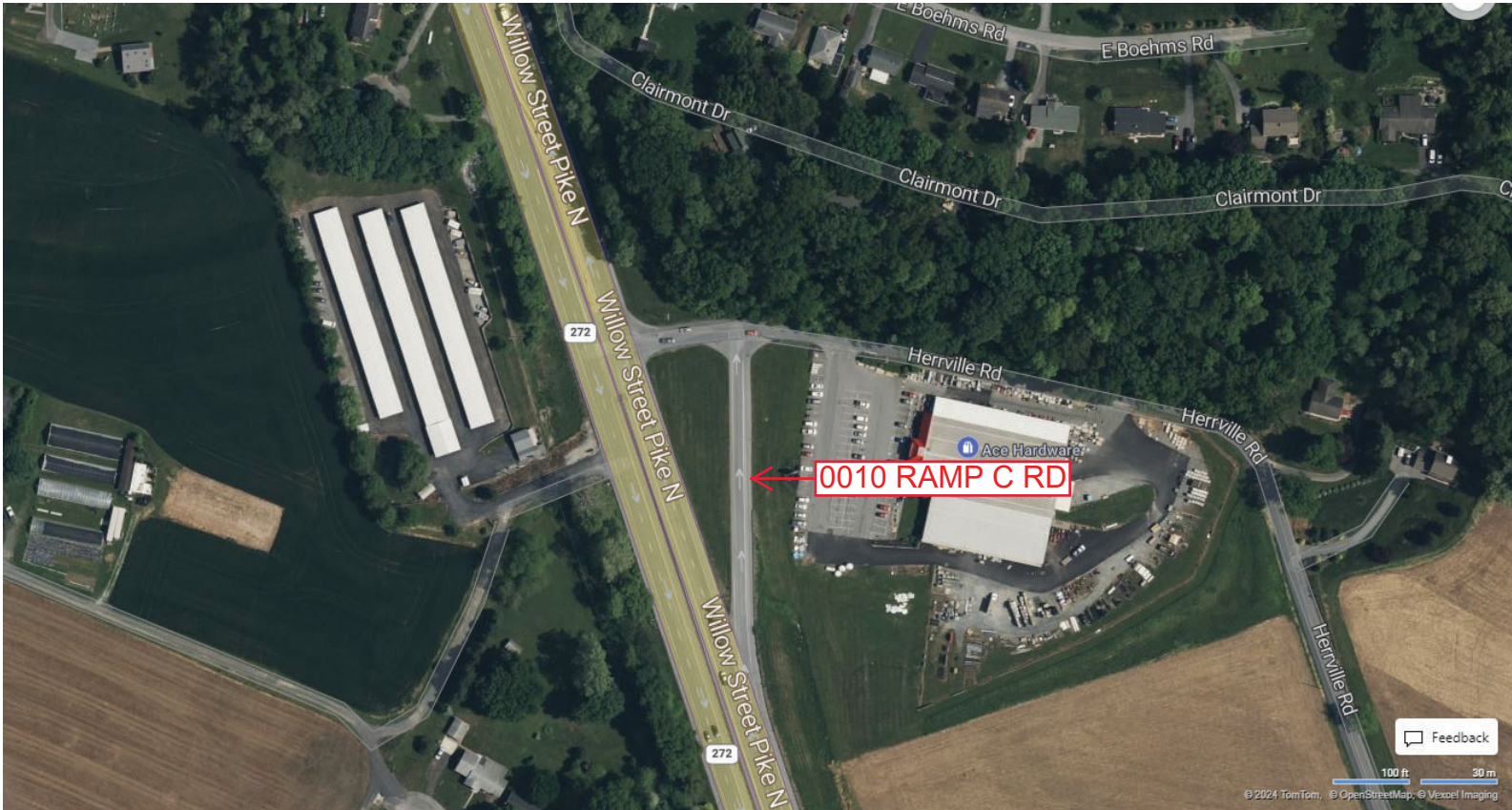
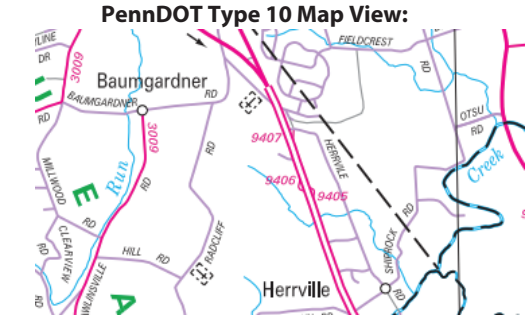
Intersecting SR's: PA 272 Willow Street Pk & TWP Herrville Rd

Ramp Segment Number and Ramp Segment Length Information:

Segment	Length	Segment	Length	Segment	Length	Segment	Length
0010	0364						

Primary Route Interchange Exit Number

Secondary Route Interchange Exit Number



Last Date Modified: Oct 28, 2024

County: 36

RMS Interchange Information

Bureau of Maintenance & Operations
Asset Management Division

Print Form



Interchange Number: 9408

Interchange Name: NEWPORT AVE

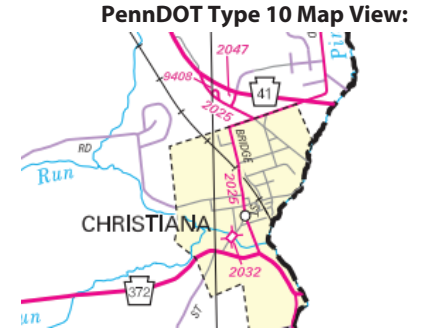
Intersecting SR's: SR 2025 Newport Av

Ramp Segment Number and Ramp Segment Length Information:

Segment	Length	Segment	Length	Segment	Length	Segment	Length
0010	0141						

Primary Route Interchange Exit Number

Secondary Route Interchange Exit Number



County: 36

RMS Interchange Information

Print Form

Interchange Number: 9410

Bureau of Maintenance & Operations
Roadway Management Division



Interchange Name: OLD HARRISBURG PK & S CHIQUES RD

Intersecting SR's: PA 230 Old Harrisburg Pk & T793 S Chiques Rd

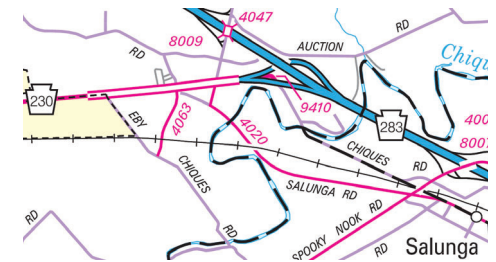
Ramp Segment Number and Ramp Segment Length Information:

Segment	Length	Segment	Length	Segment	Length	Segment	Length
0010	0714						

Primary Route
Interchange Exit
Number

Secondary Route
Interchange Exit
Number

PennDOT Type 10 Map View:



Last Date Modified:

Jul 23, 2020