

County: 38

RMS Interchange Information

Bureau of Maintenance & Operations
Asset Management Division

Print Form



Interchange Number: 8002

Interchange Name: FORT INDIANTOWN GAP

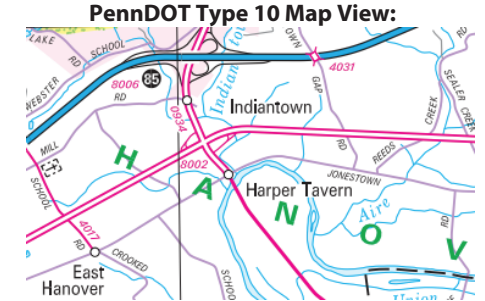
Intersecting SR's: US 22 & PA 934 Harpers -Annville Rd/Fisher Av

Ramp Segment Number and Ramp Segment Length Information:

Segment	Length	Segment	Length	Segment	Length	Segment	Length
0250	0850						
0260	0764						
0750	0889						
0760	1029						

Primary Route Interchange Exit Number

Secondary Route Interchange Exit Number



Privacy Choices Consumer Health Privacy

Last Date Modified:

Oct 29, 2024

© 2024 Microsoft

County: 38

RMS Interchange Information

Print Form

Bureau of Maintenance & Operations
Asset Management Division



Interchange Number: 8004

Interchange Name: LEBANON & LICKDALE INT

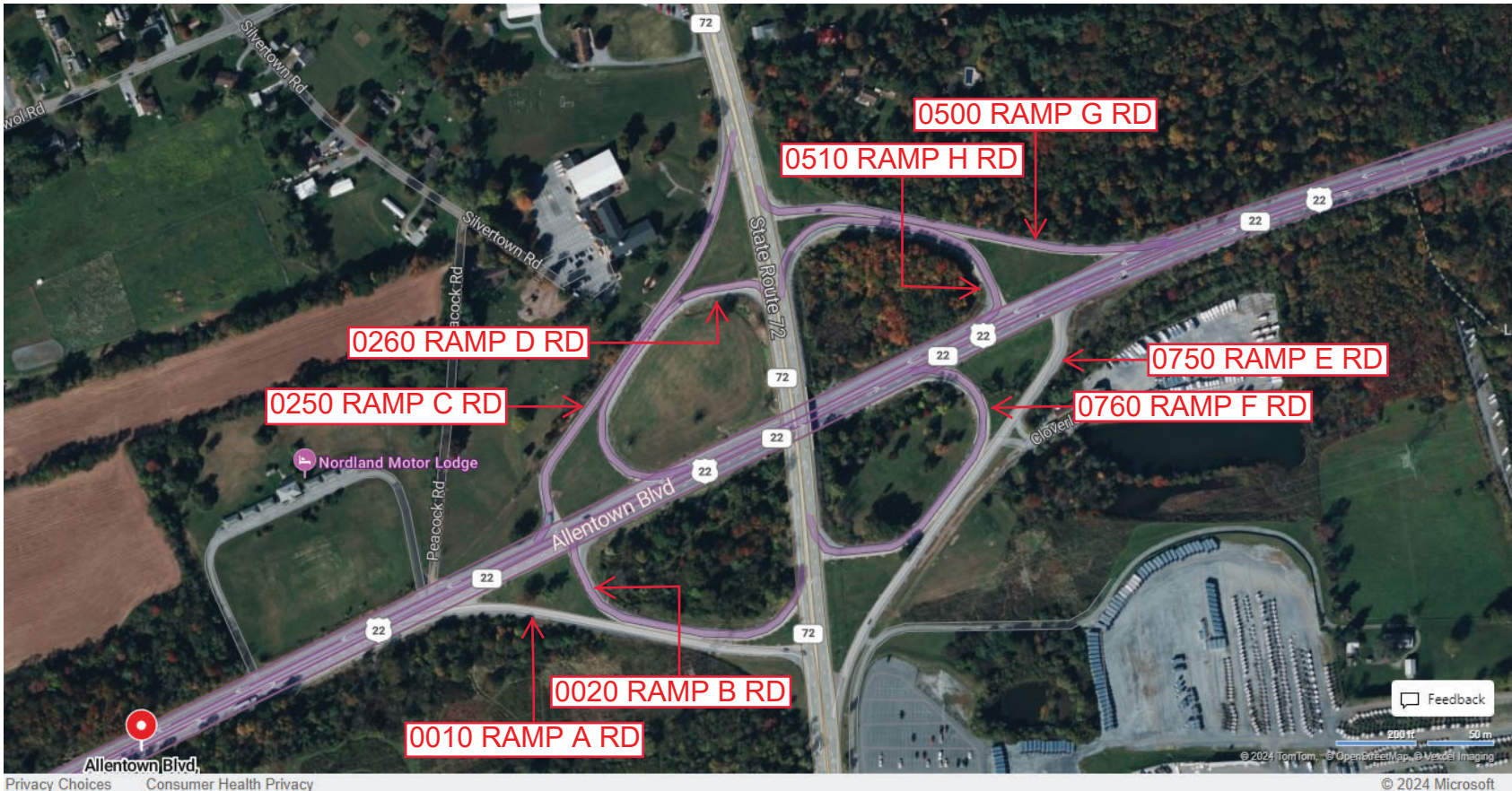
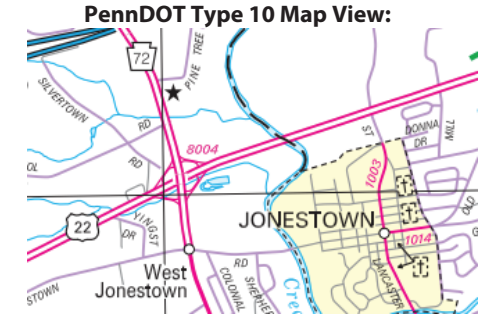
Intersecting SR's: US 22 Allentown Bl & PA 72 Ebenezer Rd

Ramp Segment Number and Ramp Segment Length Information:

Segment	Length	Segment	Length	Segment	Length	Segment	Length
0010	0840	0510	0656				
0020	0674	0750	1082				
0250	1039	0760	0739				
0260	0755						
0500	0849						

Primary Route Interchange Exit Number

Secondary Route Interchange Exit Number



Last Date Modified:

Oct 31, 2024

County: 38

RMS Interchange Information

Bureau of Maintenance & Operations
Asset Management Division

Print Form



Interchange Number: 8006

Interchange Name: INDIANTOWN GAP INT

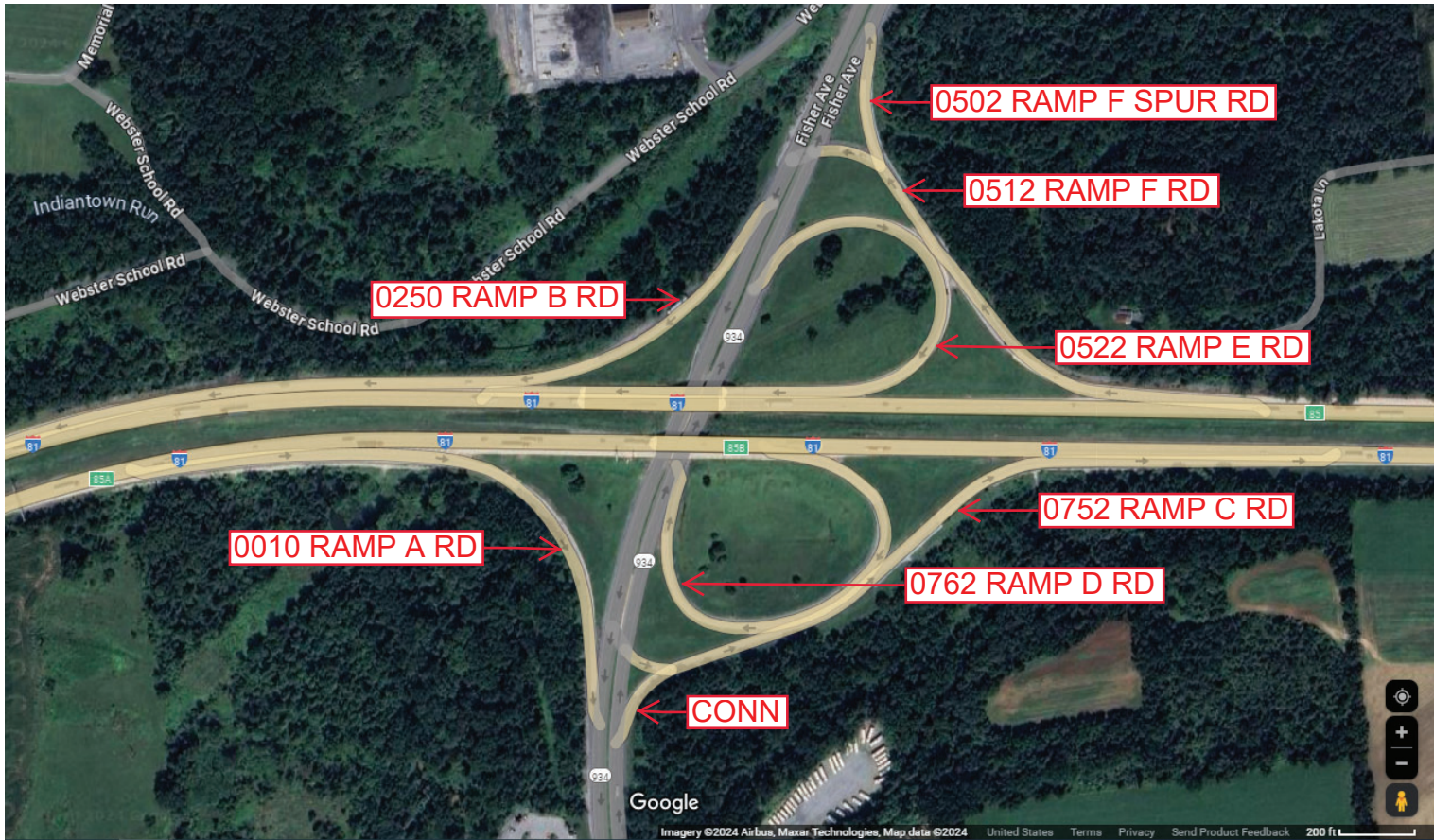
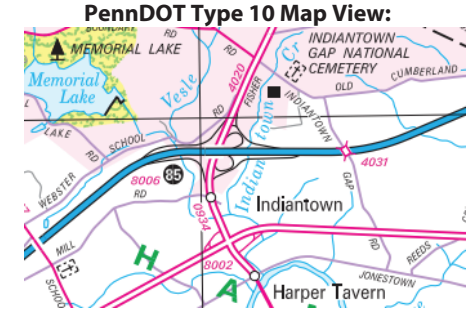
Intersecting SR's: I-81, PA 934 Harper-Annville Rd & SR 4020 Fisher Av

Ramp Segment Number and Ramp Segment Length Information:

Segment	Length	Segment	Length	Segment	Length	Segment	Length
0010	0727	0752	1227				
0250	1502	0762	1137				
0502	0214						
0512	1050						
0522	0924						

Primary Route Interchange Exit Number: 85

Secondary Route Interchange Exit Number: 85B



Last Date Modified:

Nov 1, 2024

County: **38**

RMS Interchange Information

Print Form

Bureau of Maintenance & Operations
Asset Management Division



Interchange Number: **8008**

Interchange Name: **LICKDALE EXIT**

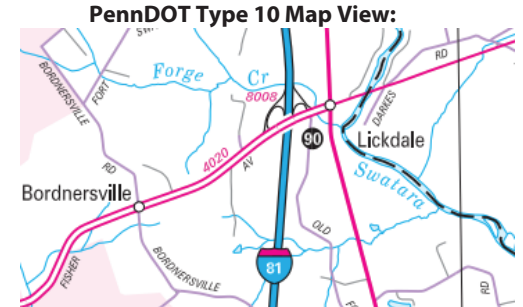
Intersecting SR's: **I-81 American Legion Mem Hw & SR 4020 Fisher Av**

Ramp Segment Number and Ramp Segment Length Information:

Segment	Length	Segment	Length	Segment	Length	Segment	Length
0500	1458						
0510	1097						
0750	0941						
0760	0686						

Primary Route Interchange Exit Number: **90**

Secondary Route Interchange Exit Number:



Last Date Modified: **Nov 1, 2024**

County: 38

RMS Interchange Information

Print Form

Bureau of Maintenance & Operations
Asset Management Division



Interchange Number: 8010

Interchange Name: MOUNT GRETNA INT

Intersecting SR's: US 322 Horseshoe Pk & PA 117 Iron Master Rd

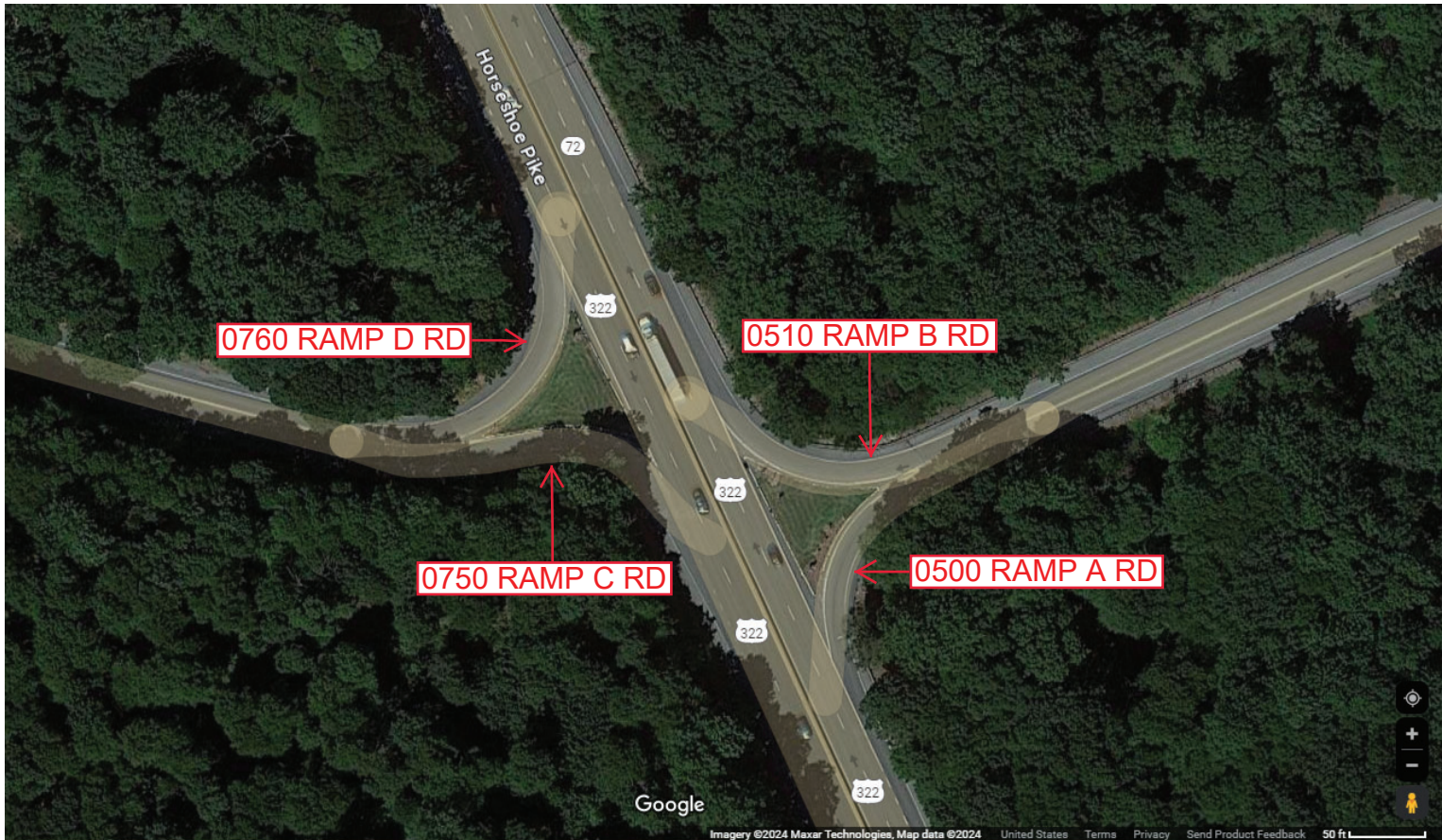
Ramp Segment Number and Ramp Segment Length Information:

Segment	Length	Segment	Length	Segment	Length	Segment	Length
0500	0904						
0510	0894						
0750	0722						
0760	0713						

Primary Route Interchange Exit Number

Secondary Route Interchange Exit Number

PennDOT Type 10 Map View:



Last Date Modified: Nov 4, 2024

County: 38

RMS Interchange Information

Bureau of Maintenance & Operations
Asset Management Division

Print Form



Interchange Number: 8012

Interchange Name: LEBANON & FREDRICKSBURG INT

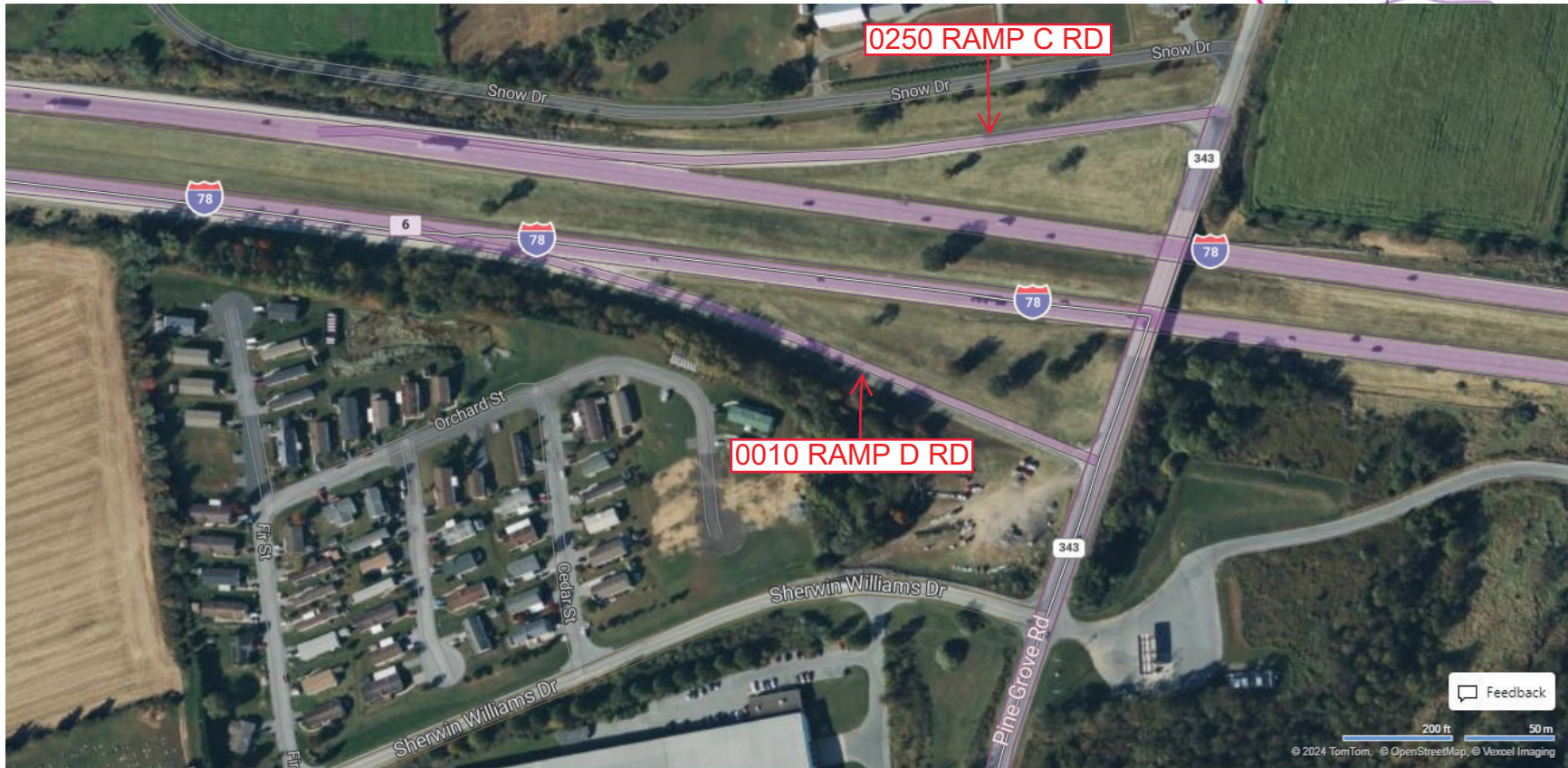
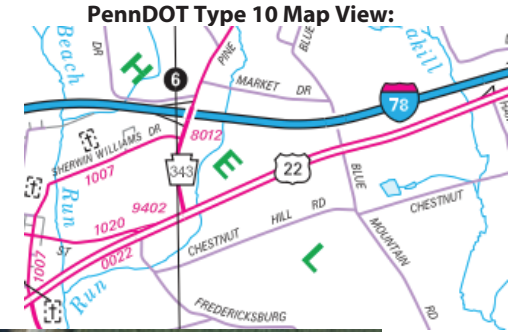
Intersecting SR's: I-78th Division Hw & PA 343 Pine Grove St

Ramp Segment Number and Ramp Segment Length Information:

Segment	Length	Segment	Length	Segment	Length	Segment	Length
0010	0953						
0250	0973						

Primary Route Interchange Exit Number: 6

Secondary Route Interchange Exit Number



Privacy Choices Consumer Health Privacy

© 2024 TomTom, © OpenStreetMap, © Vexcel Imaging

© 2024 Microsoft

Last Date Modified:

Nov 5, 2024

County: 38

RMS Interchange Information

Bureau of Maintenance & Operations
Asset Management Division

Print Form



Interchange Number: 8014

Interchange Name: FREDRICK/ALLENTOWN INT

Intersecting SR's: I-78 78th Division Hw & US 22 Allentown BI

Ramp Segment Number and Ramp Segment Length Information:

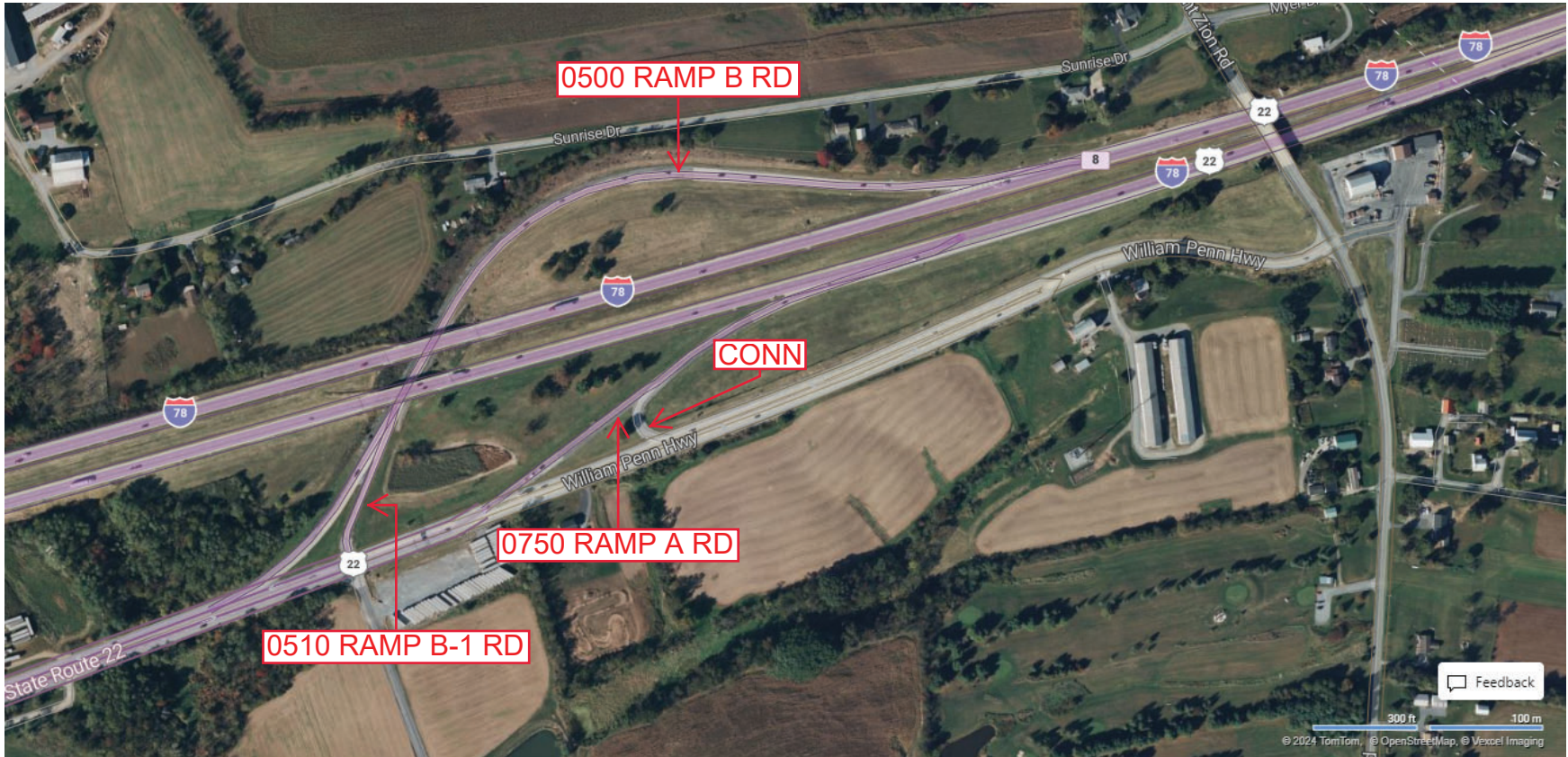
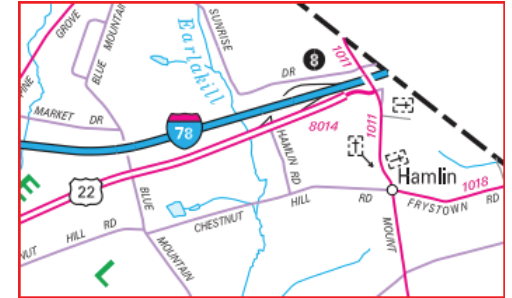
Segment	Length	Segment	Length	Segment	Length	Segment	Length
0500	2576						
0510	0296						
0750	0919						

Primary Route Interchange Exit Number

8

Secondary Route Interchange Exit Number

PennDOT Type 10 Map View:



Last Date Modified:

Jan 10, 2025

County: 38

RMS Interchange Information

Print Form

Interchange Number: 8016

Bureau of Maintenance & Operations
Asset Management Division



Interchange Name: 78/81 SPLIT

Intersecting SR's: I-78 78th Division Hw & I-81 American Legion Mem Hw

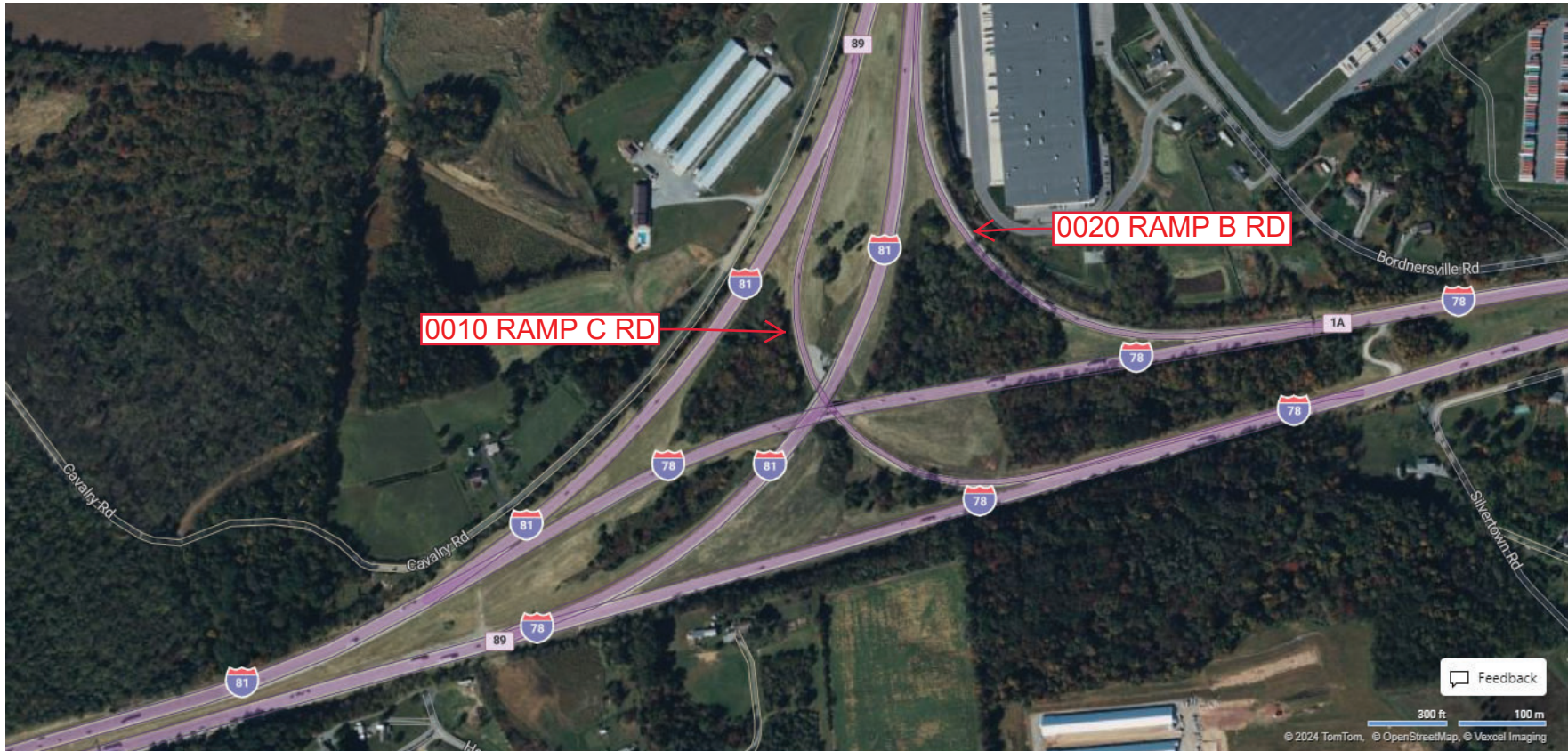
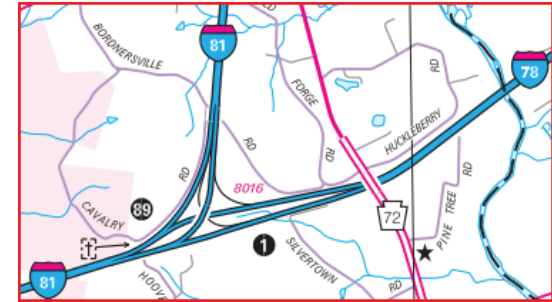
Ramp Segment Number and Ramp Segment Length Information:

Segment	Length	Segment	Length	Segment	Length	Segment	Length
0010	1917						
0020	1601						

Primary Route Interchange Exit Number: 1

Secondary Route Interchange Exit Number: 89

PennDOT Type 10 Map View:



Privacy Choices Consumer Health Privacy

Feedback
300 ft 100 m
© 2024 TomTom, © OpenStreetMap, © Vexxel Imaging

© 2024 Microsoft

Last Date Modified: Nov 21, 2024

County: 38

RMS Interchange Information

Print Form

Bureau of Maintenance & Operations
Asset Management Division



Interchange Number: 8018

Interchange Name: TO US 322 EASTBOUND

Intersecting SR's: US 322 Horseshoe Pk & PA 72 Quentin Rd

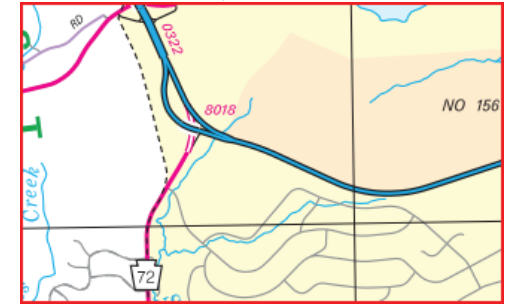
Ramp Segment Number and Ramp Segment Length Information:

Segment	Length	Segment	Length	Segment	Length	Segment	Length
0750	0470						

Primary Route Interchange Exit Number

Secondary Route Interchange Exit Number

PennDOT Type 10 Map View:



Feedback

200 ft 50 m

© 2024 TomTom, © OpenStreetMap, © Vexxel Imaging

© 2024 Microsoft

Privacy Choices Consumer Health Privacy

Last Date Modified: Nov 21, 2024

County: 38

RMS Interchange Information

Print Form

Bureau of Maintenance & Operations
Asset Management Division



Interchange Number: 9402

Interchange Name: ALLENTOWN BLVD & MAIN ST

Intersecting SR's: US 22 Allentown BI & SR 1020 Main St

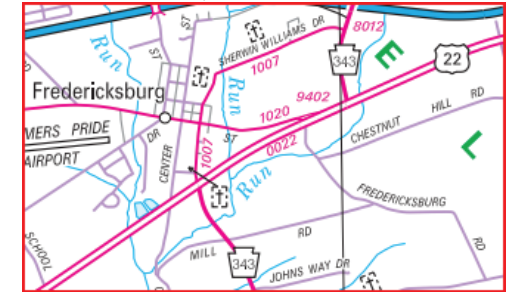
Ramp Segment Number and Ramp Segment Length Information:

Segment	Length	Segment	Length	Segment	Length	Segment	Length
0010	0135						

Primary Route
Interchange Exit
Number

Secondary Route
Interchange Exit
Number

PennDOT Type 10 Map View:



Feedback

100 ft 30 m
© 2024 TomTom, © OpenStreetMap, © Voxel Imaging

© 2024 Microsoft

Privacy Choices Consumer Health Privacy

Last Date Modified:

Nov 21, 2024