

County: 50

RMS Interchange Information

Print Form

Interchange Number: 8001

Bureau of Maintenance & Operations
Asset Management Division



Interchange Name: DUNCANNON EXIT

Intersecting SR's: US 11, PA 274 & SR 2009 Susquehanna Av

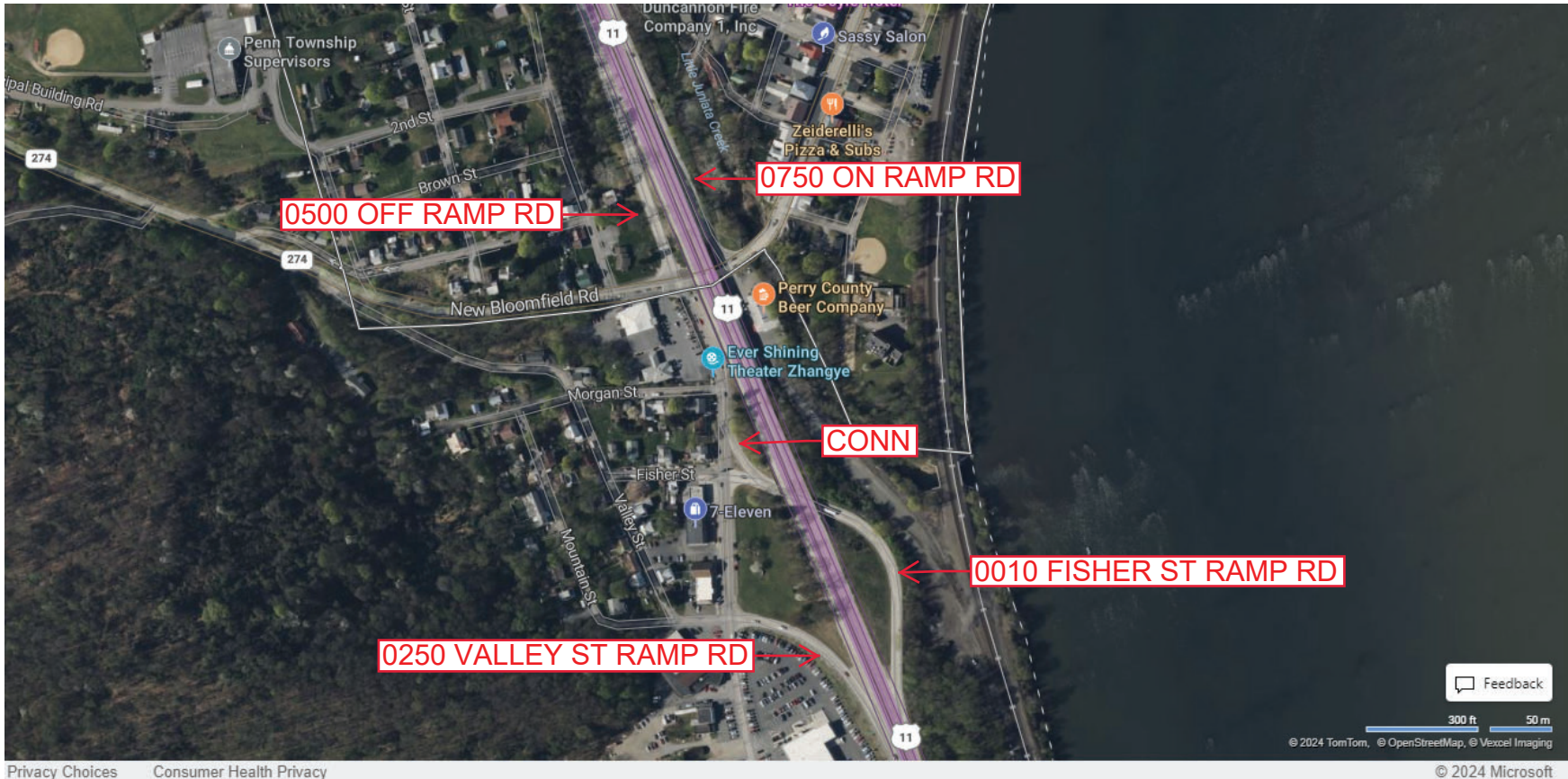
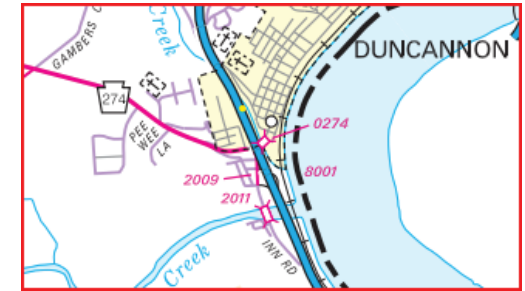
Ramp Segment Number and Ramp Segment Length Information:

Segment	Length	Segment	Length	Segment	Length	Segment	Length
0010	0827						
0250	0352						
0500	0405						
0750	0626						

Primary Route Interchange Exit Number

Secondary Route Interchange Exit Number

PennDOT Type 10 Map View:



County: 50

RMS Interchange Information

Print Form

Bureau of Maintenance & Operations
Asset Management Division



Interchange Number: 8005

Interchange Name: WATTS EXIT

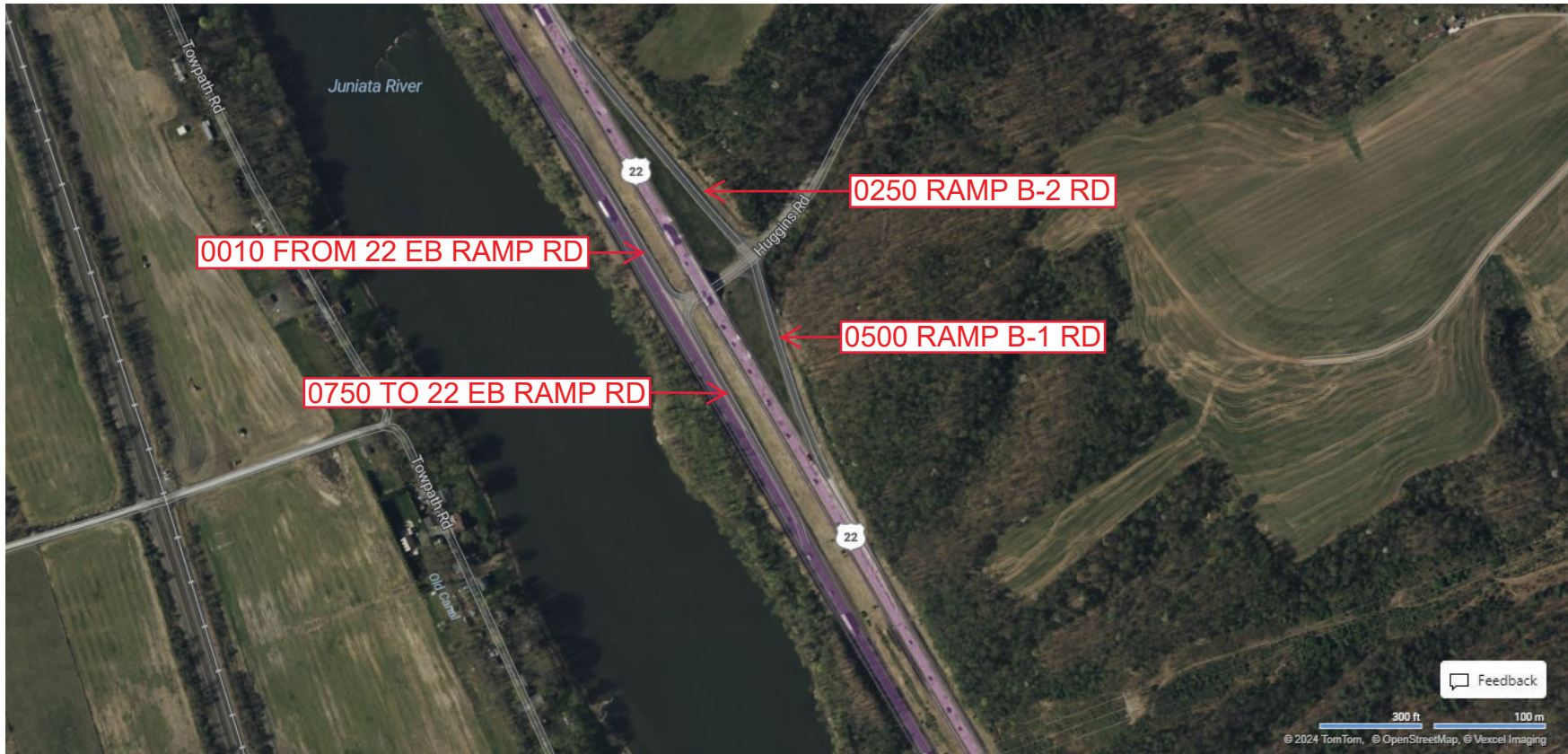
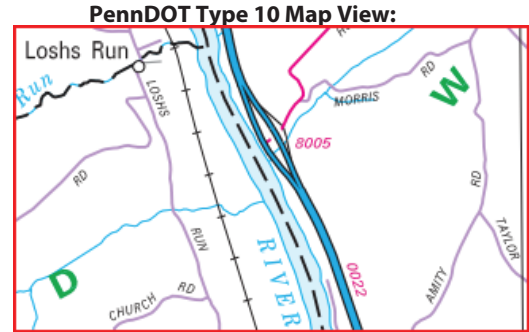
Intersecting SR's: US 22 William Penn Hw & SR 1028 Huggins Rd

Ramp Segment Number and Ramp Segment Length Information:

Segment	Length	Segment	Length	Segment	Length	Segment	Length
0010	0381						
0250	0769						
0500	0655						
0750	0423						

Primary Route Interchange Exit Number

Secondary Route Interchange Exit Number



County: 50

RMS Interchange Information

Print Form

Bureau of Maintenance & Operations
Asset Management Division



Interchange Number: 8007

Interchange Name: MIDWAY EXIT

Intersecting SR's: US 22, SR 1015 Juniata PY & SR 1020 Meadow Grove Rd

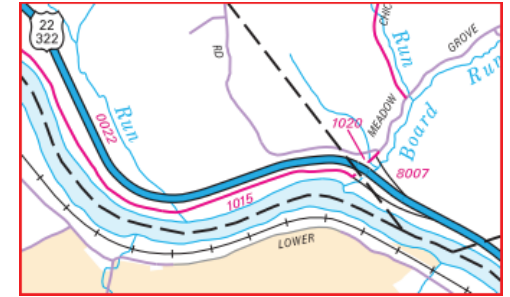
Ramp Segment Number and Ramp Segment Length Information:

Segment	Length	Segment	Length	Segment	Length	Segment	Length
0500	0858						
0750	2175						

Primary Route Interchange Exit Number

Secondary Route Interchange Exit Number

PennDOT Type 10 Map View:



Privacy Choices Consumer Health Privacy

© 2024 TomTom, © OpenStreetMap, © Vexcel Imaging

© 2024 Microsoft

Last Date Modified: Nov 22, 2024

County: 50

RMS Interchange Information

Print Form

Bureau of Maintenance & Operations
Asset Management Division



Interchange Number: 8009

Interchange Name: NEWPORT EXIT

Intersecting SR's: US 22 28th Division Hw & PA 34 Carlisle St/Red Hill Rd

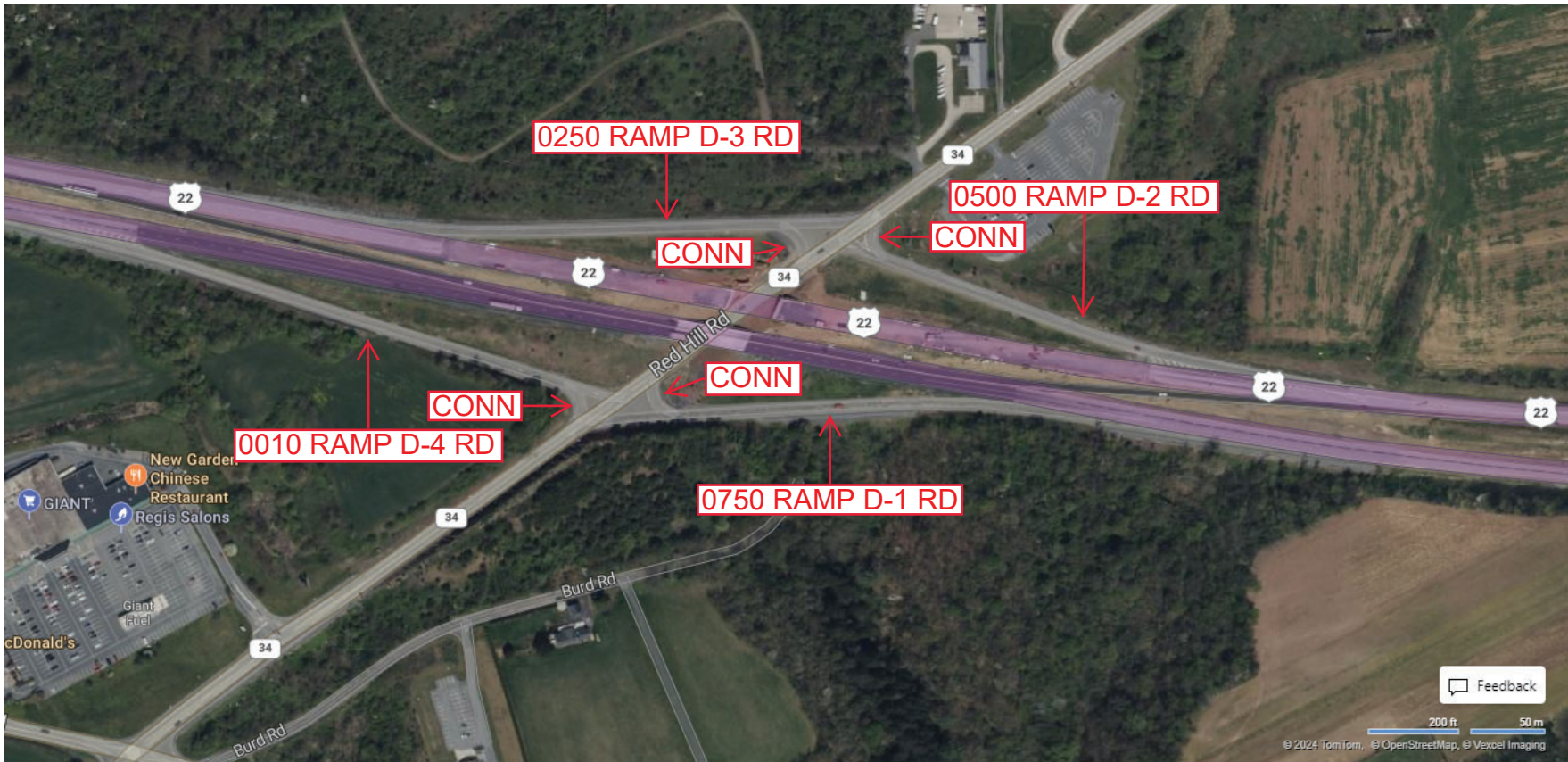
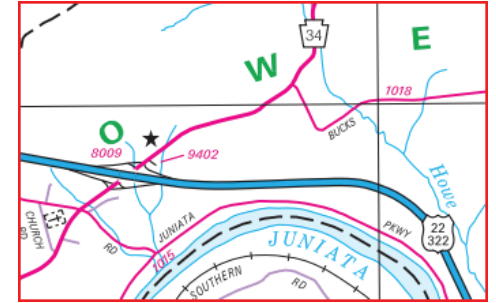
Ramp Segment Number and Ramp Segment Length Information:

Segment	Length	Segment	Length	Segment	Length	Segment	Length
0010	1109						
0250	0910						
0500	0719						
0750	0906						

Primary Route Interchange Exit Number

Secondary Route Interchange Exit Number

PennDOT Type 10 Map View:



Privacy Choices Consumer Health Privacy

Feedback
200 ft 50 m
© 2024 TomTom, © OpenStreetMap, © Vexcel Imaging

© 2024 Microsoft

Last Date Modified: Nov 22, 2024

County: 50

RMS Interchange Information

Bureau of Maintenance & Operations
Asset Management Division

Print Form



Interchange Number: 8011

Interchange Name: MILLERSTOWN EXIT

Intersecting SR's: US 22 William Penn Hw & SR 1015 Market St

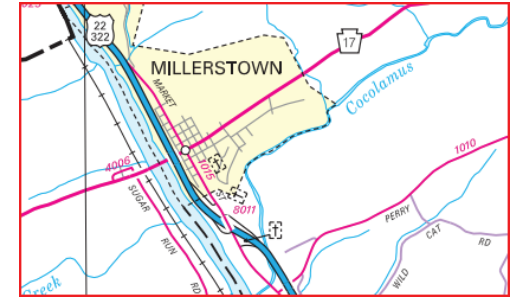
Ramp Segment Number and Ramp Segment Length Information:

Segment	Length	Segment	Length	Segment	Length	Segment	Length
0010	0932						
0250	0896						
0500	1061						
0750	0679						

Primary Route Interchange Exit Number

Secondary Route Interchange Exit Number

PennDOT Type 10 Map View:



Privacy Choices Consumer Health Privacy

© 2024 TomTom, © OpenStreetMap, © Maxcel Imaging

© 2024 Microsoft

Last Date Modified: Nov 25, 2024

County: 50

RMS Interchange Information

Print Form

Bureau of Maintenance & Operations
Asset Management Division



Interchange Number: 9401

Interchange Name: SUSQUEHANNA TRAIL JUGHANDLE

Intersecting SR's: US 11 Susquehanna Tr

Ramp Segment Number and Ramp Segment Length Information:

Segment	Length	Segment	Length	Segment	Length	Segment	Length
0010	0509						

Primary Route
Interchange Exit
Number

Secondary Route
Interchange Exit
Number

PennDOT Type 10 Map View:



Last Date Modified:

Nov 25, 2024

County: 50

RMS Interchange Information

Print Form

Interchange Number: 9402

Bureau of Maintenance & Operations
Asset Management Division



Interchange Name: HOWE TWP PARK-N-RIDE

Intersecting SR's: PA 34 Red Hill Rd

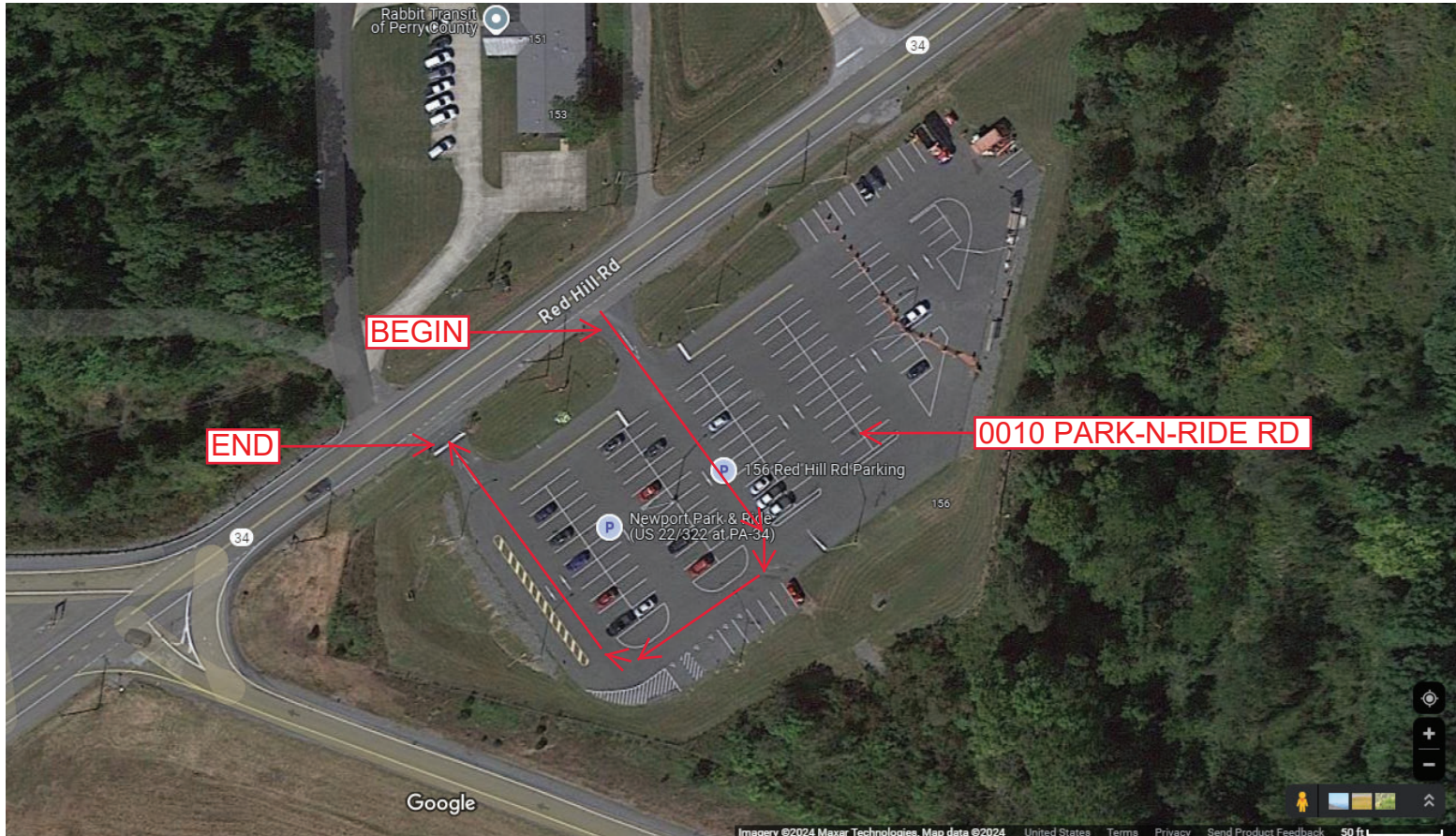
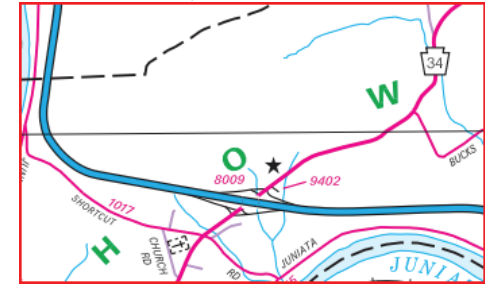
Ramp Segment Number and Ramp Segment Length Information:

Segment	Length	Segment	Length	Segment	Length	Segment	Length
0010	0550						

Primary Route Interchange Exit Number

Secondary Route Interchange Exit Number

PennDOT Type 10 Map View:



Last Date Modified: Nov 25, 2024

County: 50

RMS Interchange Information

Print Form

Bureau of Maintenance & Operations
Asset Management Division



Interchange Number: 9403

Interchange Name: SUSQUEHANNA TRAIL JUGHANDLE

Intersecting SR's: US 11 Susquehanna Tr

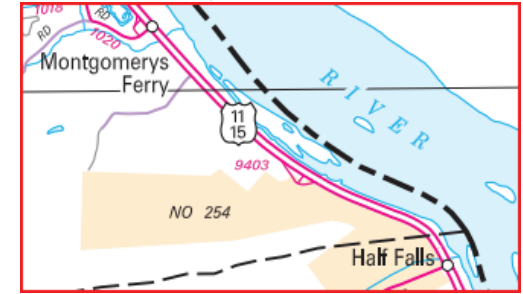
Ramp Segment Number and Ramp Segment Length Information:

Segment	Length	Segment	Length	Segment	Length	Segment	Length
0010	0623						

Primary Route
Interchange Exit
Number

Secondary Route
Interchange Exit
Number

PennDOT Type 10 Map View:



Last Date Modified:

Nov 25, 2024

County: 50

RMS Interchange Information

Print Form

Interchange Number: 9405

Bureau of Maintenance & Operations
Asset Management Division



Interchange Name: SUSQUEHANNE TRAIL JUGHANDLE

Intersecting SR's: US 11 Susquehanna Tr & SR 1020 Bucks Valley Rd

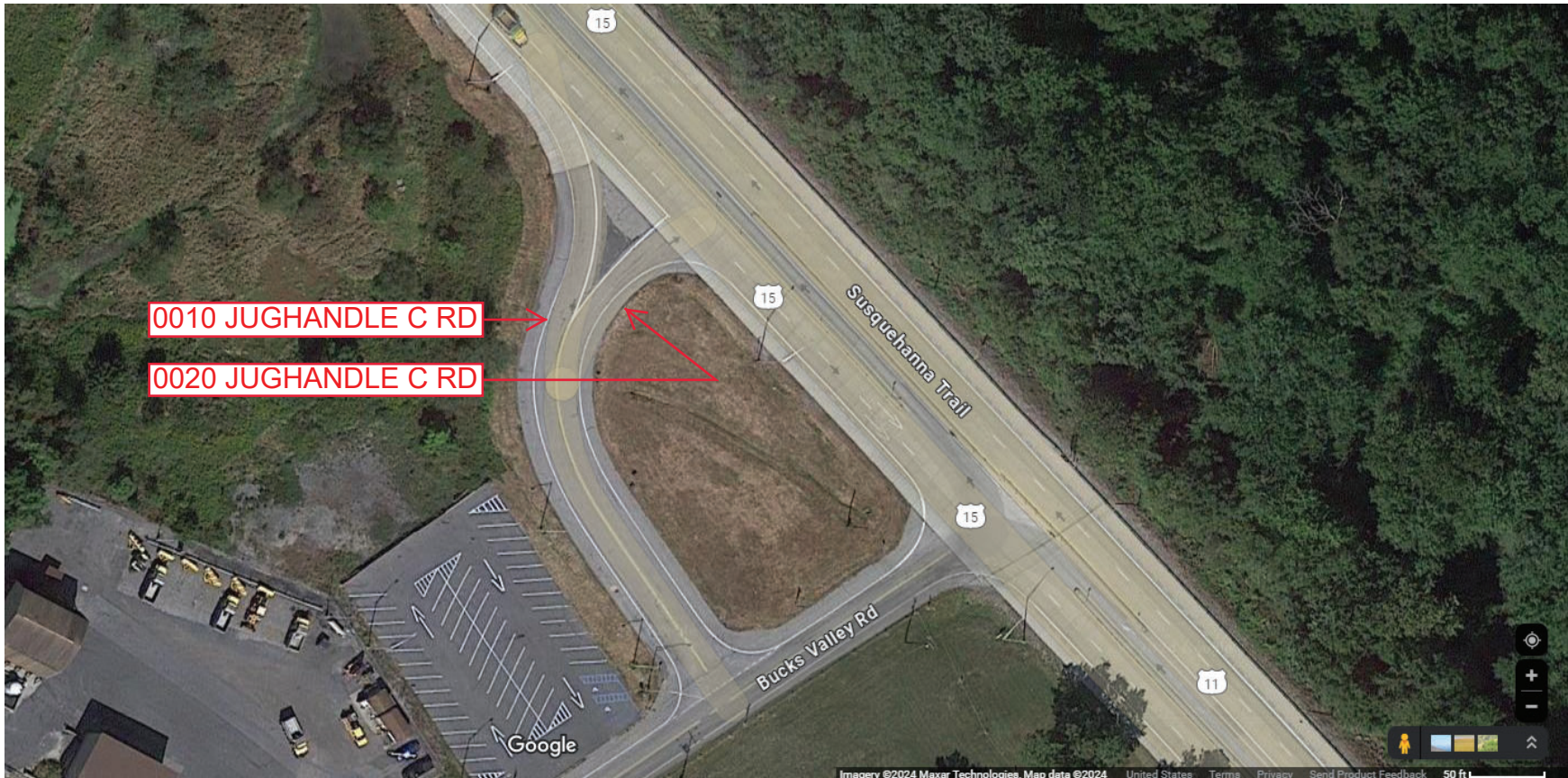
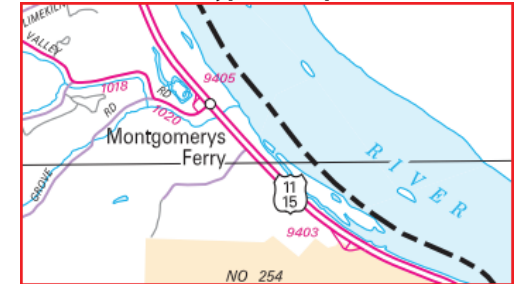
Ramp Segment Number and Ramp Segment Length Information:

Segment	Length	Segment	Length	Segment	Length	Segment	Length
0010	0384						
0020	0353						

Primary Route Interchange Exit Number

Secondary Route Interchange Exit Number

PennDOT Type 10 Map View:



Last Date Modified:

Nov 27, 2024

County: 50

RMS Interchange Information

Print Form

Interchange Number: 9407

Bureau of Maintenance & Operations
Asset Management Division



Interchange Name: SUSQUEHANNA TRAIL JUGHANDLE

Intersecting SR's: US 11 Susquehanna Tr & T559 Cherry Rd

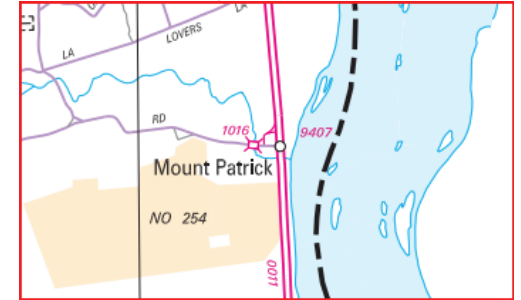
Ramp Segment Number and Ramp Segment Length Information:

Segment	Length	Segment	Length	Segment	Length	Segment	Length
0010	0367						
0020	0337						

Primary Route
Interchange Exit
Number

Secondary Route
Interchange Exit
Number

PennDOT Type 10 Map View:



Last Date Modified:

Nov 27, 2024

County: 50

RMS Interchange Information

Print Form

Interchange Number: 9409

Bureau of Maintenance & Operations
Asset Management Division



Interchange Name: US 11 & PA 34

Intersecting SR's: US 11 Susquehanna Tr & PA 34 Hunters Valley Rd

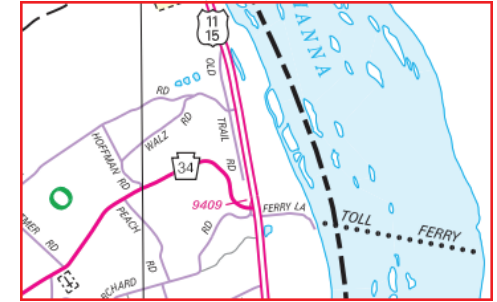
Ramp Segment Number and Ramp Segment Length Information:

Segment	Length	Segment	Length	Segment	Length	Segment	Length
0010	0326						

Primary Route Interchange Exit Number

Secondary Route Interchange Exit Number

PennDOT Type 10 Map View:



Last Date Modified: Nov 27, 2024

County: 50

RMS Interchange Information

Print Form

Bureau of Maintenance & Operations
Asset Management Division



Interchange Number: 9411

Interchange Name: SUSQUEHANNA TRAIL JUGHANDLE

Intersecting SR's: US 11 Susquehanna Tr & TWP Front St

Ramp Segment Number and Ramp Segment Length Information:

Segment	Length	Segment	Length	Segment	Length	Segment	Length
0010	0285						
0020	0186						

Primary Route
Interchange Exit
Number

Secondary Route
Interchange Exit
Number

PennDOT Type 10 Map View:



Last Date Modified:

Jan 14, 2025

County: 50

RMS Interchange Information

Print Form

Bureau of Maintenance & Operations
Asset Management Division



Interchange Number: 9413

Interchange Name: LIVERPOOL JUGHANDLE

Intersecting SR's: US 11 Susquehanna Tr

Ramp Segment Number and Ramp Segment Length Information:

Segment	Length	Segment	Length	Segment	Length	Segment	Length
0010	0420						

Primary Route Interchange Exit Number

Secondary Route Interchange Exit Number

PennDOT Type 10 Map View:



Last Date Modified:

Dec 2, 2024

County: 50

RMS Interchange Information

Print Form

Bureau of Maintenance & Operations
Asset Management Division



Interchange Number: 9415

Interchange Name: SUSQUEHANNA TRAIL JUGHANDLE

Intersecting SR's: US 11 Susquehanna Tr & PA 104

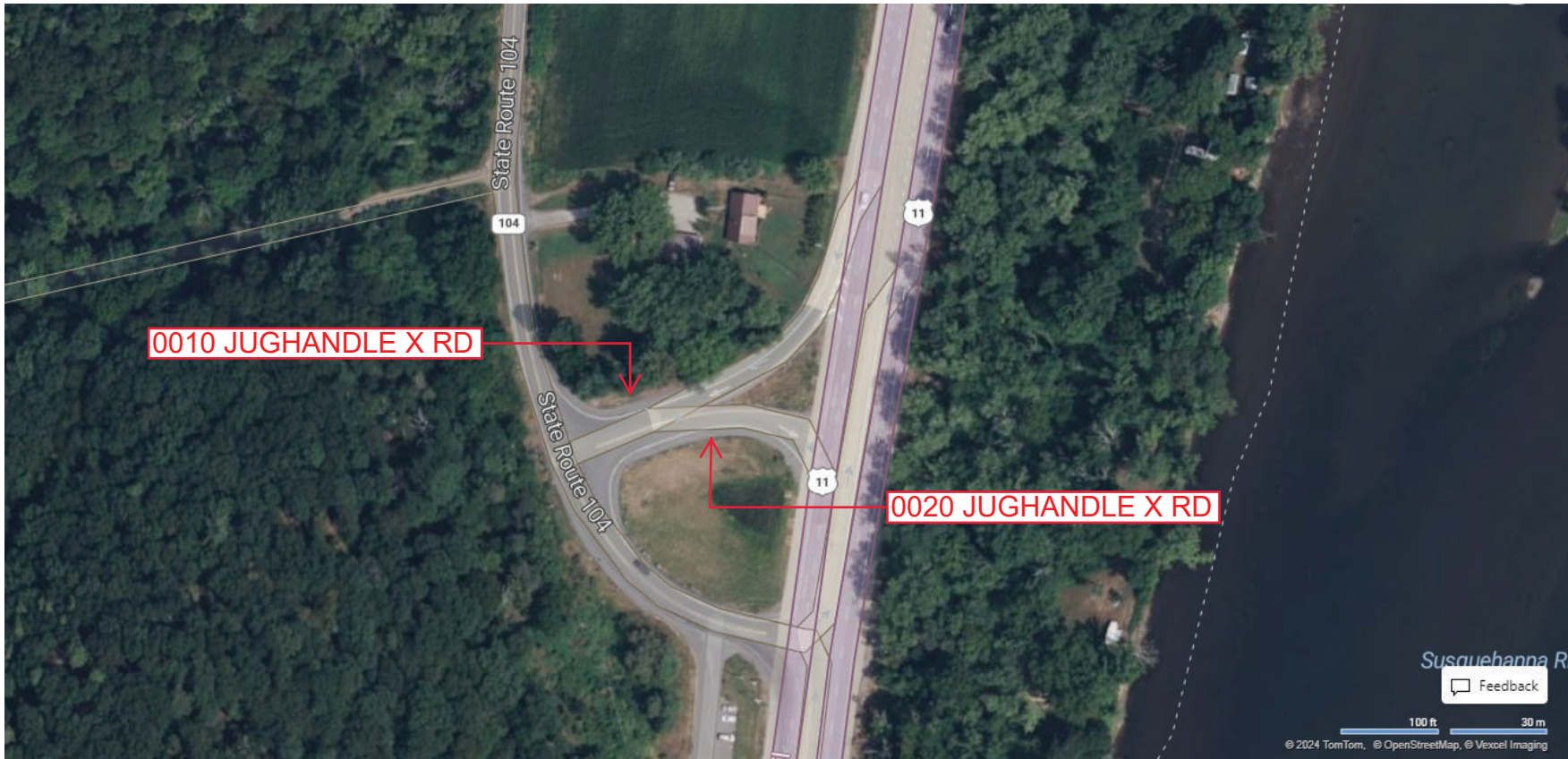
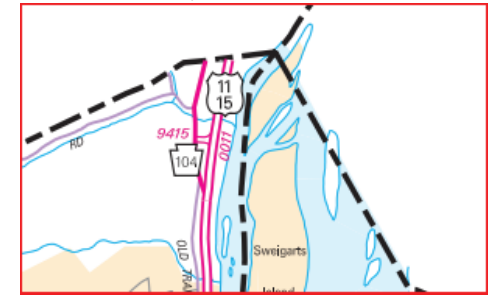
Ramp Segment Number and Ramp Segment Length Information:

Segment	Length	Segment	Length	Segment	Length	Segment	Length
0010	0289						
0020	0251						

Primary Route
Interchange Exit
Number

Secondary Route
Interchange Exit
Number

PennDOT Type 10 Map View:



Privacy Choices Consumer Health Privacy

Susquehanna R
Feedback
100 ft 30 m
© 2024 TomTom, © OpenStreetMap, © Vexcel Imaging

© 2024 Microsoft

Last Date Modified:

Dec 2, 2024

County: 50

RMS Interchange Information

Print Form

Bureau of Maintenance & Operations
Asset Management Division



Interchange Number: 9502

Interchange Name: PARK & RIDE RD

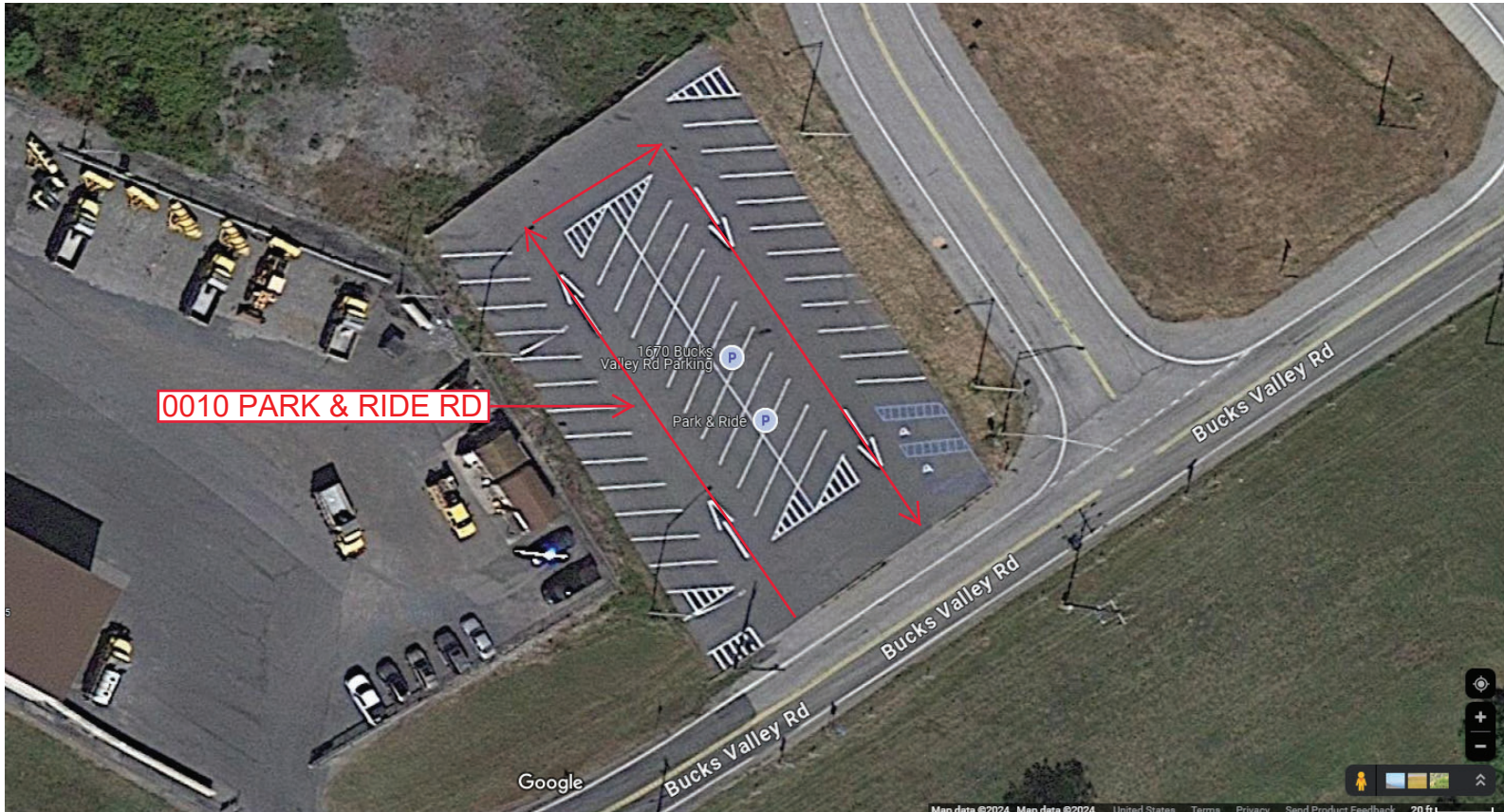
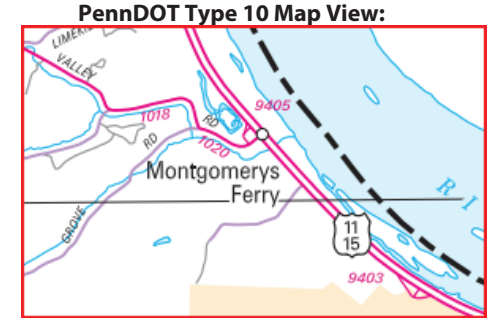
Intersecting SR's: SR 1020 Bucks Valley Rd

Ramp Segment Number and Ramp Segment Length Information:

Segment	Length	Segment	Length	Segment	Length	Segment	Length
0010	0415						

Primary Route Interchange Exit Number

Secondary Route Interchange Exit Number



Last Date Modified: Dec 2, 2024