

County: 66

# RMS Interchange Information

Print Form

Interchange Number: 8001

Bureau of Maintenance & Operations  
Asset Management Division



Interchange Name: SHREWSBURY INT

Intersecting SR's: I-83 VFW Memorial Hw & PA 851 Forrest Av

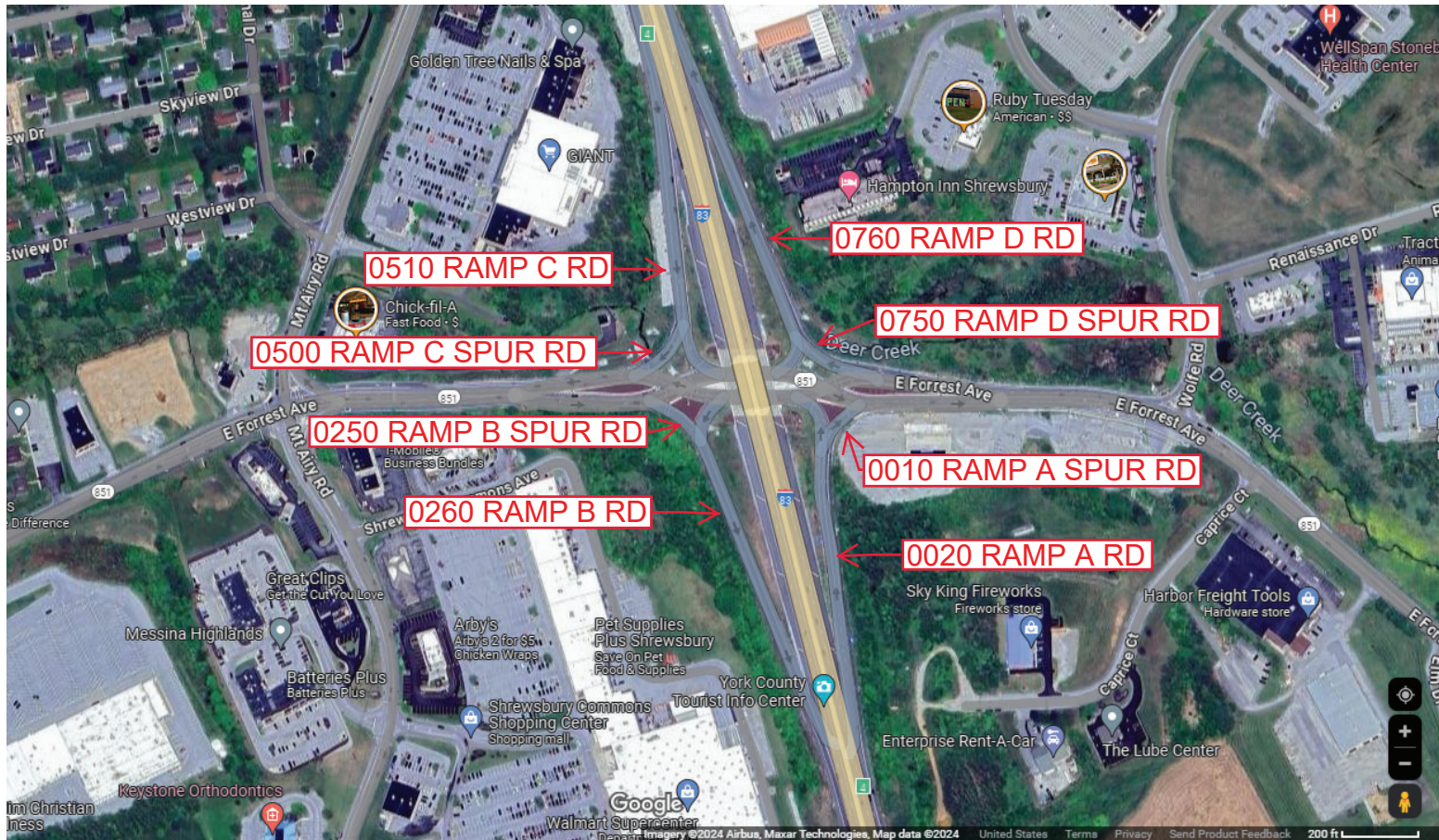
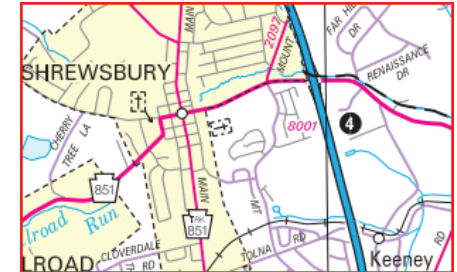
Ramp Segment Number and Ramp Segment Length Information:

Segment	Length	Segment	Length	Segment	Length	Segment	Length
0010	0073	0510	0470				
0020	0688	0750	0136				
0250	0100	0760	0711				
0260	0770						
0500	0128						

Primary Route Interchange Exit Number: 4

Secondary Route Interchange Exit Number:

PennDOT Type 10 Map View:



Last Date Modified: Dec 2, 2024

County: 66

# RMS Interchange Information

Print Form

Bureau of Maintenance & Operations  
Asset Management Division



Interchange Number: 8002

Interchange Name: MARKET STREET INT

Intersecting SR's: US 30 Lincoln Hw & PA 462 Market St

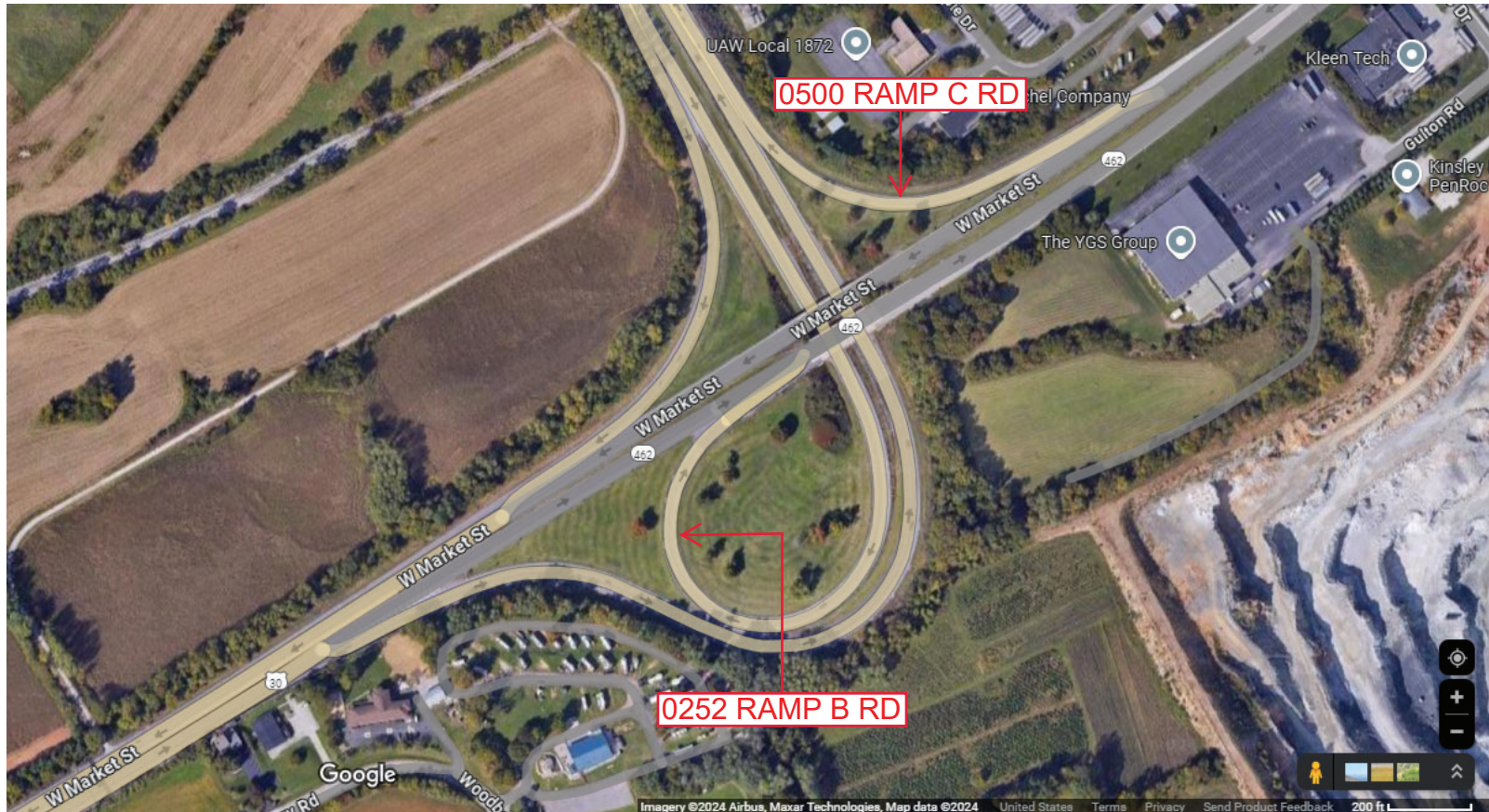
Ramp Segment Number and Ramp Segment Length Information:

Segment	Length	Segment	Length	Segment	Length	Segment	Length
0252	2027						
0500	0701						

Primary Route Interchange Exit Number

Secondary Route Interchange Exit Number

PennDOT Type 10 Map View:



Last Date Modified: Feb 19, 2025

County: 66

# RMS Interchange Information

Print Form

Bureau of Maintenance & Operations  
Asset Management Division



Interchange Number: 8003

Interchange Name: GLEN ROCK INT

Intersecting SR's: I-83 VFW of Mem Hw & PA 216 Seaks Run Rd

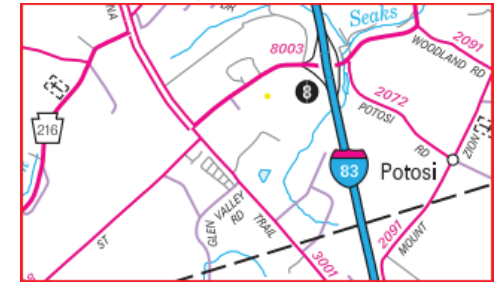
Ramp Segment Number and Ramp Segment Length Information:

Segment	Length	Segment	Length	Segment	Length	Segment	Length
0010	0535						
0250	0502						
0500	0315						
0750	0764						

Primary Route Interchange Exit Number: 8

Secondary Route Interchange Exit Number:

PennDOT Type 10 Map View:



Last Date Modified: Dec 3, 2024

County: 66

# RMS Interchange Information

Print Form

Interchange Number: 8004

Bureau of Maintenance & Operations  
Asset Management Division



Interchange Name: CARLISLE AVENUE INT

Intersecting SR's: US 30 Lincoln Hw & PA 74 Carlisle Av

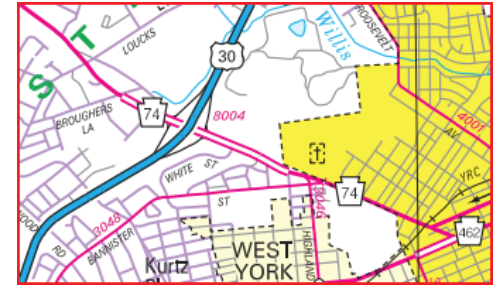
Ramp Segment Number and Ramp Segment Length Information:

Segment	Length	Segment	Length	Segment	Length	Segment	Length
0010	1277						
0250	1077						
0500	1134						
0750	0884						

Primary Route Interchange Exit Number

Secondary Route Interchange Exit Number

PennDOT Type 10 Map View:



Privacy Choices Consumer Health Privacy

© 2024 Microsoft

Last Date Modified: Dec 3, 2024

County: 66

# RMS Interchange Information

Print Form

Bureau of Maintenance & Operations  
Asset Management Division



Interchange Number: 8005

Interchange Name: LOGANVILLE INT

Intersecting SR's: I-83 VFW of Mem Hw & SR 3100 Lake Rd/North St

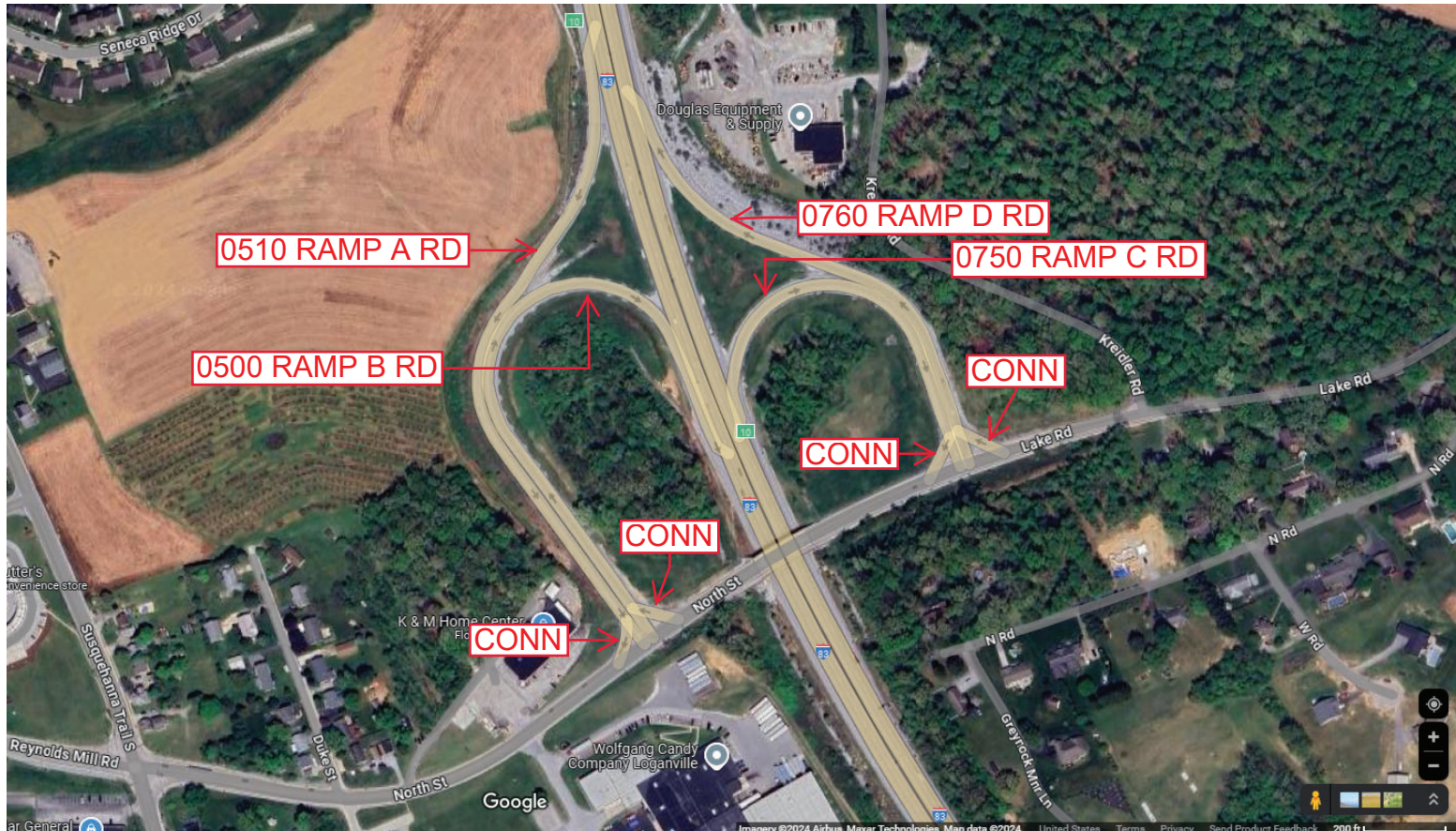
Ramp Segment Number and Ramp Segment Length Information:

Segment	Length	Segment	Length	Segment	Length	Segment	Length
0500	1307						
0510	1450						
0750	0934						
0760	1118						

Primary Route Interchange Exit Number: 10

Secondary Route Interchange Exit Number

PennDOT Type 10 Map View:



Last Date Modified: Dec 5, 2024

County: **66**

# RMS Interchange Information

Print Form

Interchange Number: **8006**

Bureau of Maintenance & Operations  
Asset Management Division



Interchange Name: **MEMORY LANE INT**

Intersecting SR's: **US 30 Loucks Rd & SR 2005 Memory Ln**

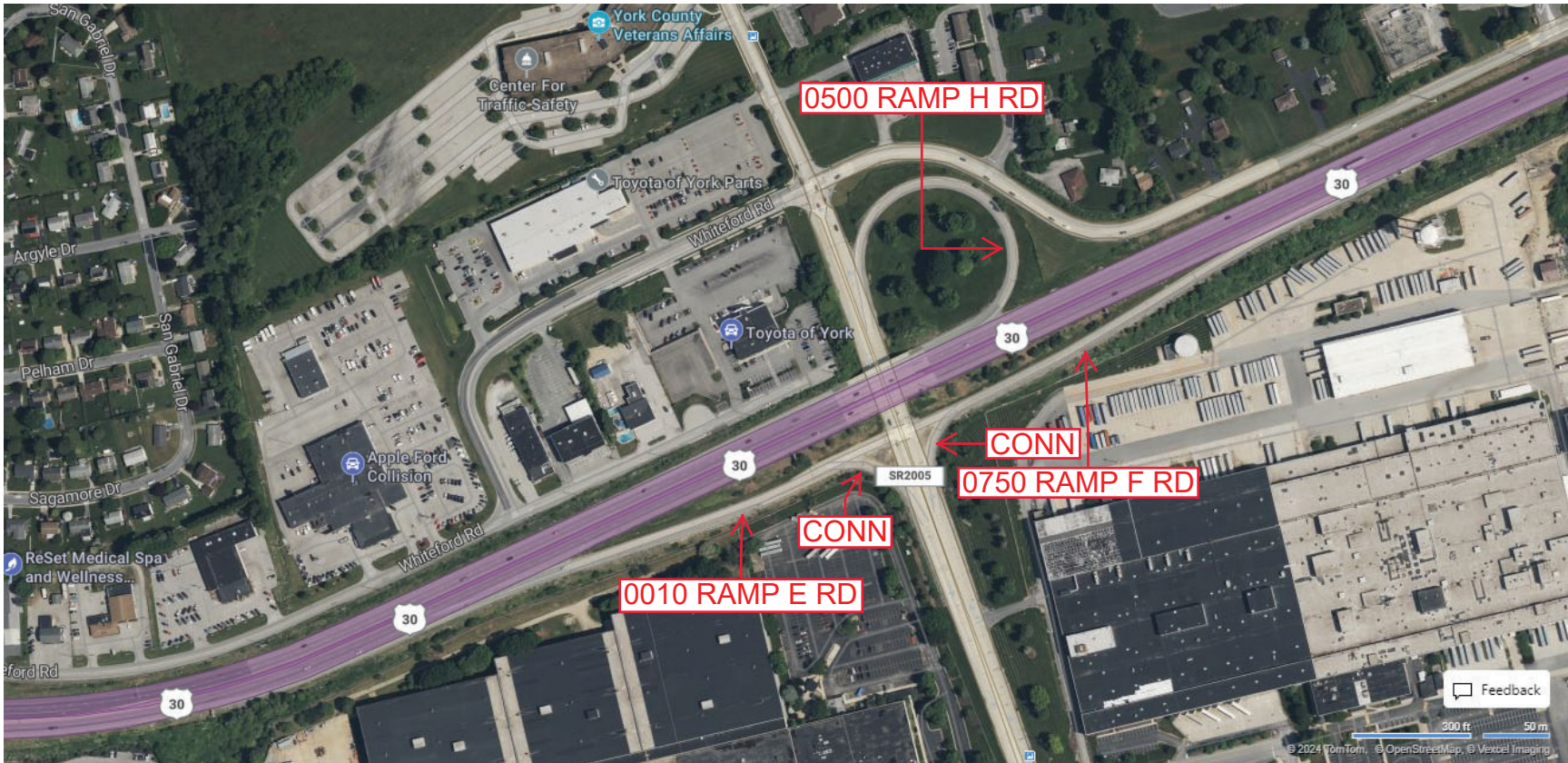
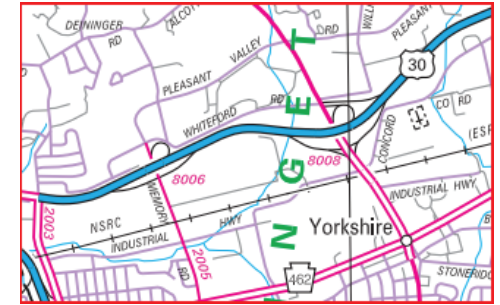
Ramp Segment Number and Ramp Segment Length Information:

Segment	Length	Segment	Length	Segment	Length	Segment	Length
<b>0010</b>	<b>0885</b>						
<b>0500</b>	<b>0727</b>						
<b>0750</b>	<b>0986</b>						

Primary Route  
Interchange Exit  
Number

Secondary Route  
Interchange Exit  
Number

PennDOT Type 10 Map View:



County: 66

# RMS Interchange Information

Print Form

Bureau of Maintenance & Operations  
Asset Management Division



Interchange Number: 8007

Interchange Name: DALLASTOWN INT

Intersecting SR's: I-83 VFW of Mem Hw & PA 182 Leader Heights Rd

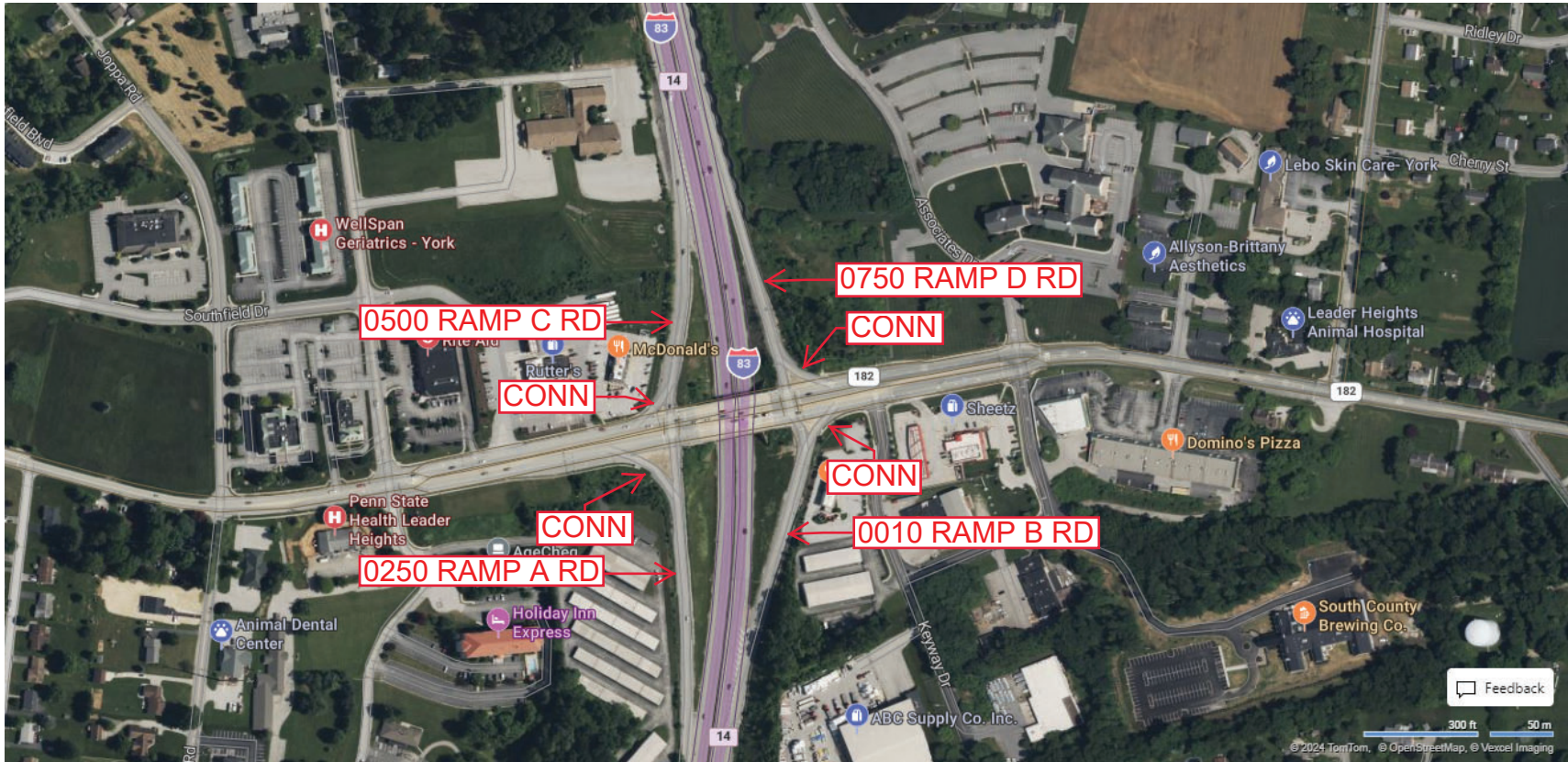
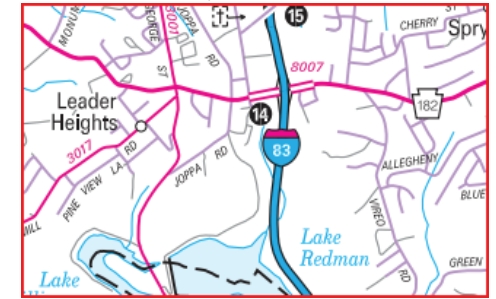
Ramp Segment Number and Ramp Segment Length Information:

Segment	Length	Segment	Length	Segment	Length	Segment	Length
0010	0567						
0250	0696						
0500	0511						
0750	0507						

Primary Route Interchange Exit Number: 14

Secondary Route Interchange Exit Number

PennDOT Type 10 Map View:



Privacy Choices Consumer Health Privacy

© 2024 Microsoft

Last Date Modified:

Dec 6, 2024

County: 66

# RMS Interchange Information

Print Form

Interchange Number: 8008

Bureau of Maintenance & Operations  
Asset Management Division



Interchange Name: MOUNT ZION ROAD INT

Intersecting SR's: US 30 Loucks Rd & PA 24 Mt Zion Rd

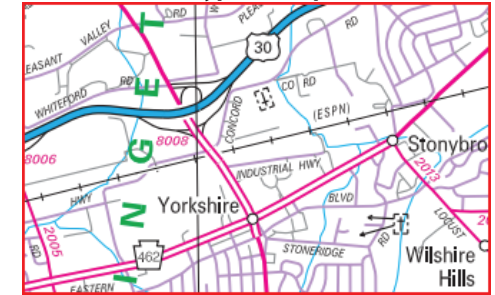
Ramp Segment Number and Ramp Segment Length Information:

Segment	Length	Segment	Length	Segment	Length	Segment	Length
0010	1038						
0500	0975						
0510	0329						
0520	1258						
0750	1349						

Primary Route  
Interchange Exit  
Number

Secondary Route  
Interchange Exit  
Number

PennDOT Type 10 Map View:



Privacy Choices Consumer Health Privacy

Last Date Modified:

Dec 10, 2024



County: 66

# RMS Interchange Information

Print Form

Bureau of Maintenance & Operations  
Asset Management Division



Interchange Number: 8009

Interchange Name: QUEEN STREET INT

Intersecting SR's: I-83 VFW of US Mem Hw & PA 74 Queen St

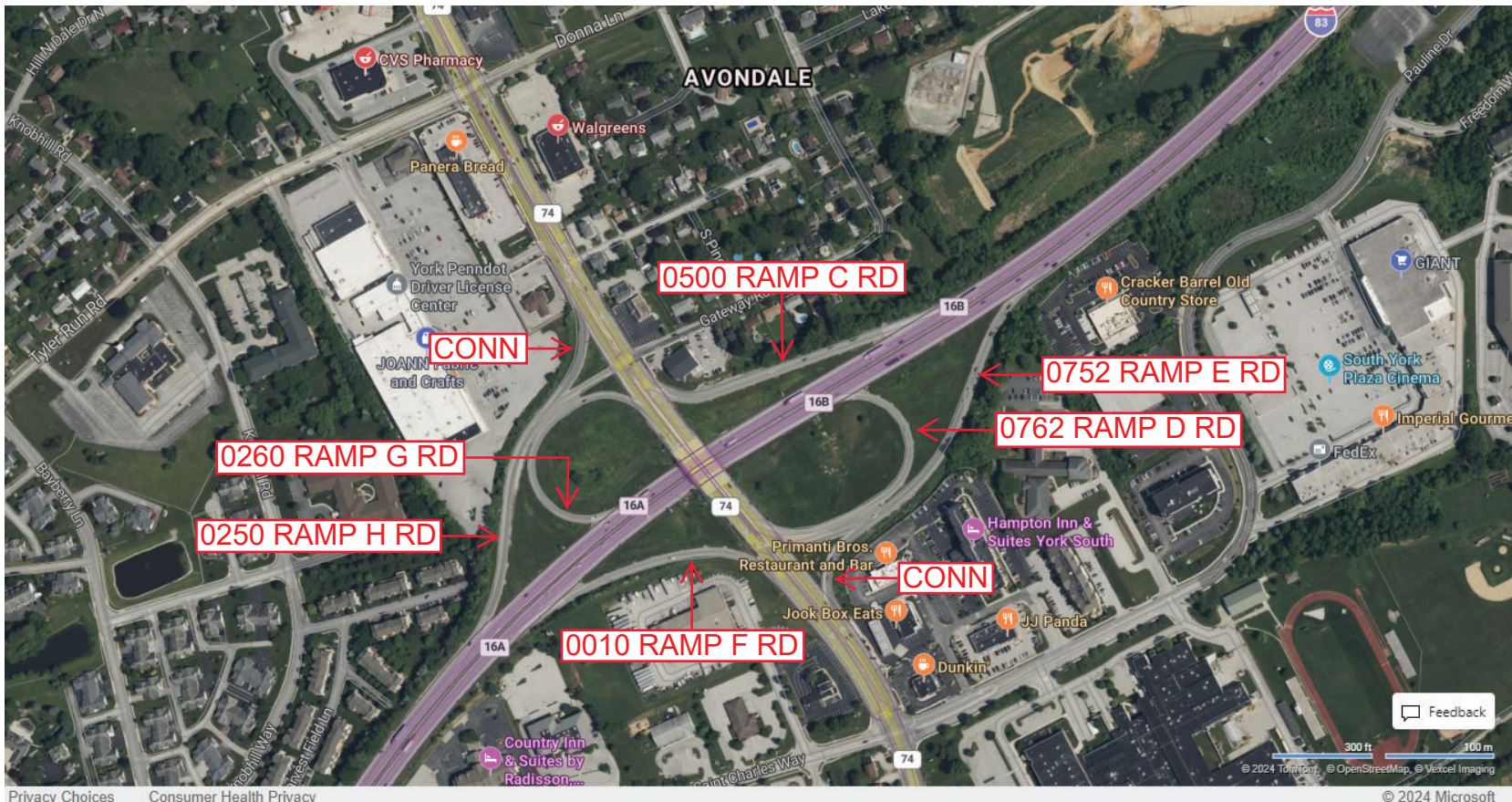
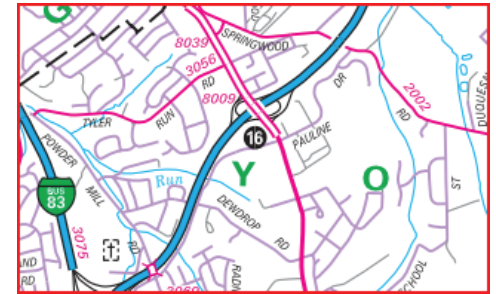
Ramp Segment Number and Ramp Segment Length Information:

Segment	Length	Segment	Length	Segment	Length	Segment	Length
0010	0618	0762	0802				
0250	0918						
0260	0715						
0500	0733						
0752	1087						

Primary Route Interchange Exit Number: 16A

Secondary Route Interchange Exit Number: 16B

PennDOT Type 10 Map View:



Privacy Choices Consumer Health Privacy

Last Date Modified:

Dec 13, 2024

County: 66

# RMS Interchange Information

Print Form

Bureau of Maintenance & Operations  
Asset Management Division



Interchange Number: 8010

Interchange Name: KRUETZ CREEK ROAD INT

Intersecting SR's: US 30 Loucks Rd & SR 1014 Kruetz Creek Rd

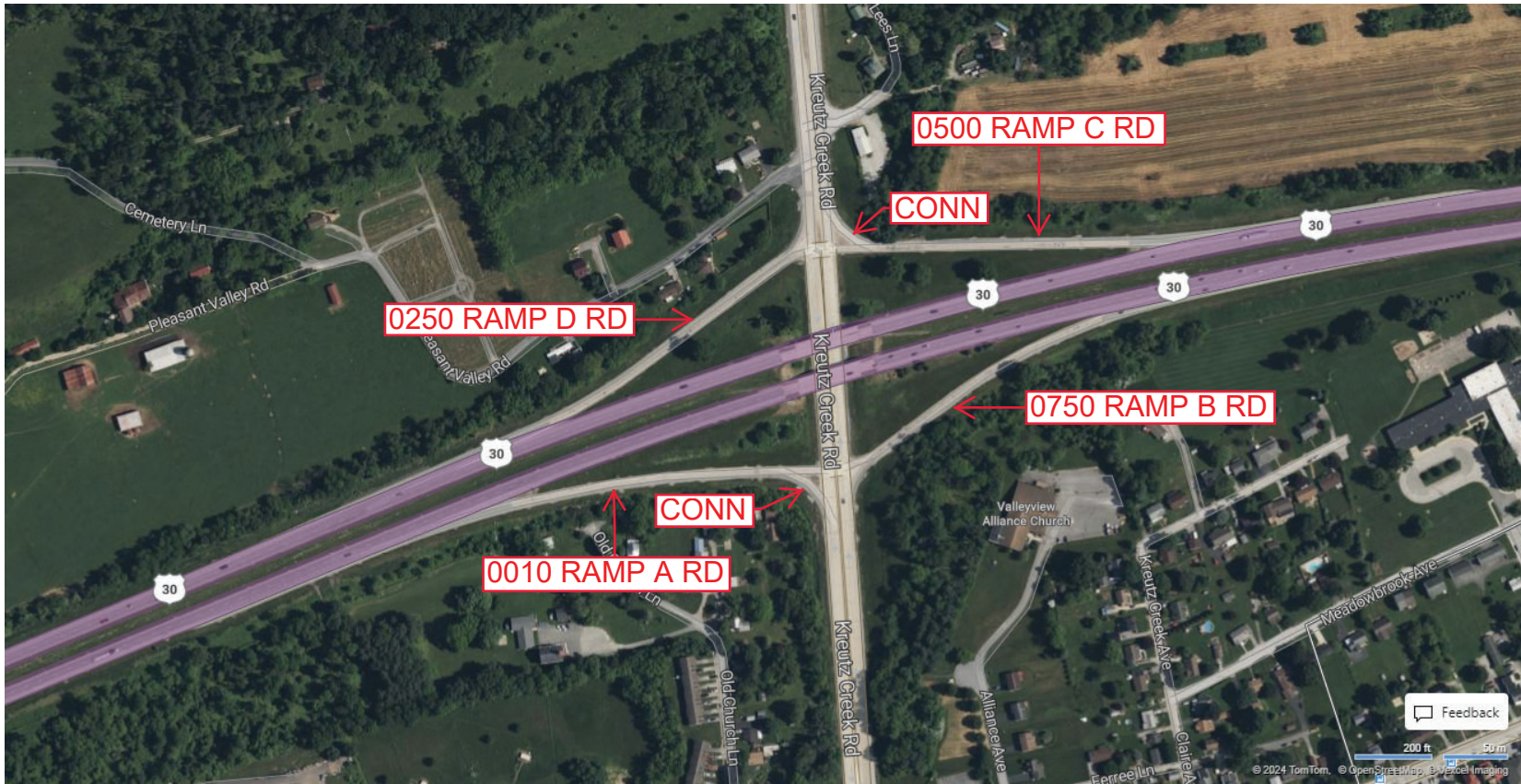
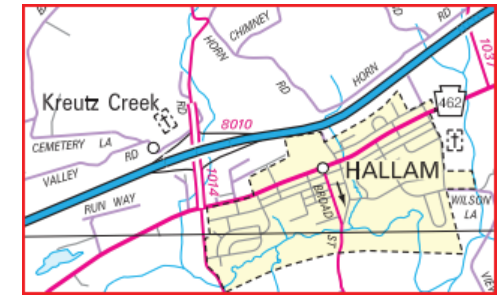
Ramp Segment Number and Ramp Segment Length Information:

Segment	Length	Segment	Length	Segment	Length	Segment	Length
0010	0836						
0250	0814						
0500	0828						
0750	0780						

Primary Route Interchange Exit Number

Secondary Route Interchange Exit Number

PennDOT Type 10 Map View:



Privacy Choices Consumer Health Privacy

Last Date Modified:

Dec 13, 2024

County: 66

# RMS Interchange Information

Print Form

Bureau of Maintenance & Operations  
Asset Management Division



Interchange Number: 8011

Interchange Name: PROSPECT STREET & MOUNT ROSE AVE

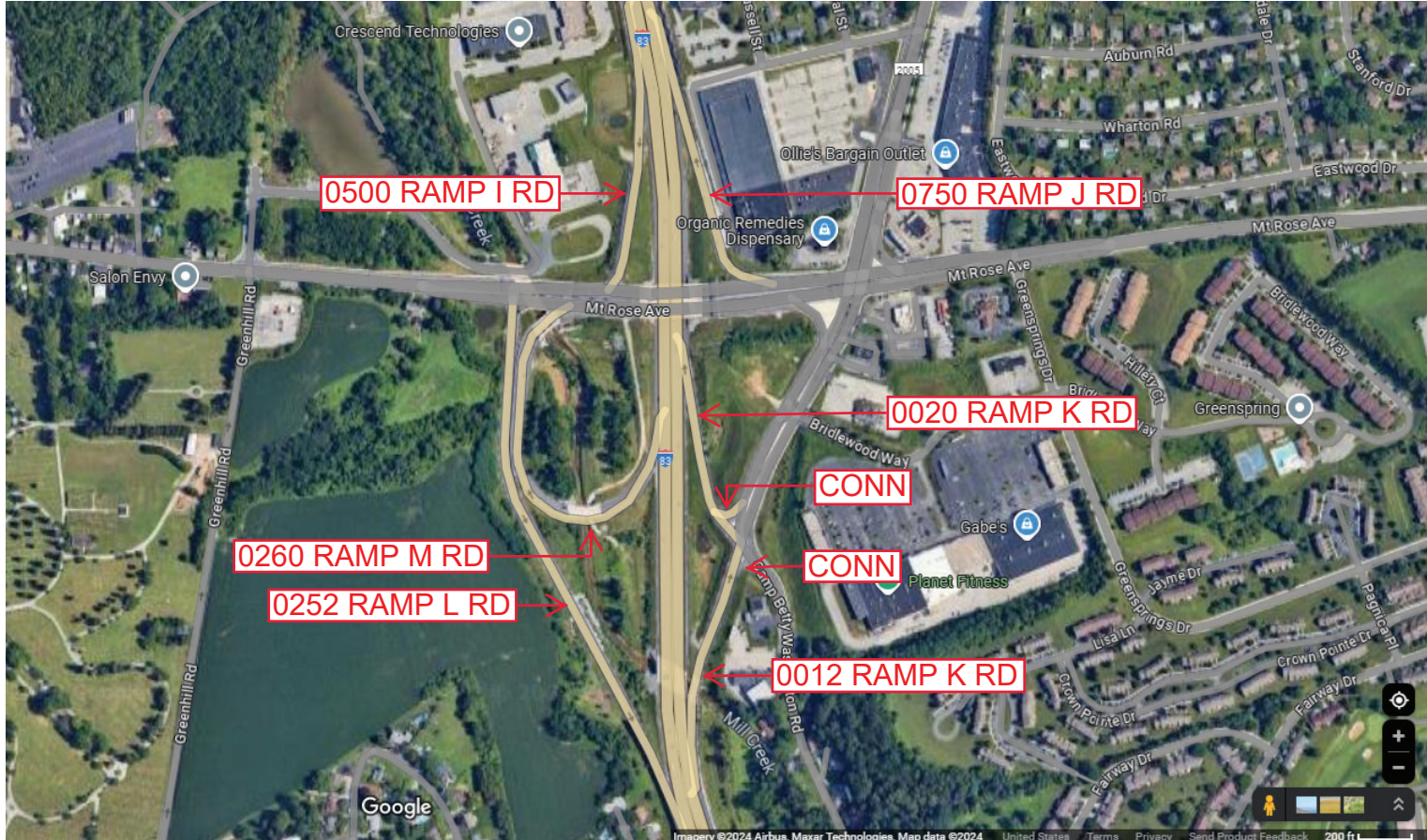
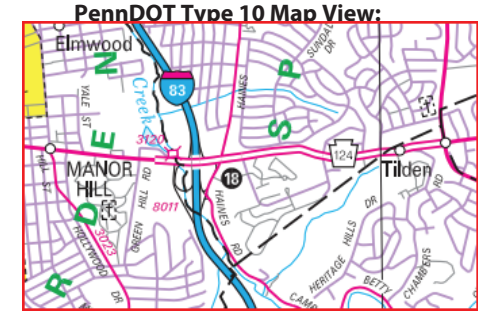
Intersecting SR's: I-81 & PA 124 Mount Rose Av

Ramp Segment Number and Ramp Segment Length Information:

Segment	Length	Segment	Length	Segment	Length	Segment	Length
0012	0596	0750	0745				
0020	0598						
0252	1948						
0260	1278						
0500	0602						

Primary Route Interchange Exit Number: 18A

Secondary Route Interchange Exit Number: 18B



Last Date Modified:

Dec 18, 2024

County: 02

# RMS Interchange Information

Print Form

Bureau of Maintenance & Operations  
Asset Management Division



Interchange Number: 8012

Interchange Name: COOL SPRINGS ROAD INT

Intersecting SR's: US 30 Loucks Rd & SR 1016 Cool Springs Rd

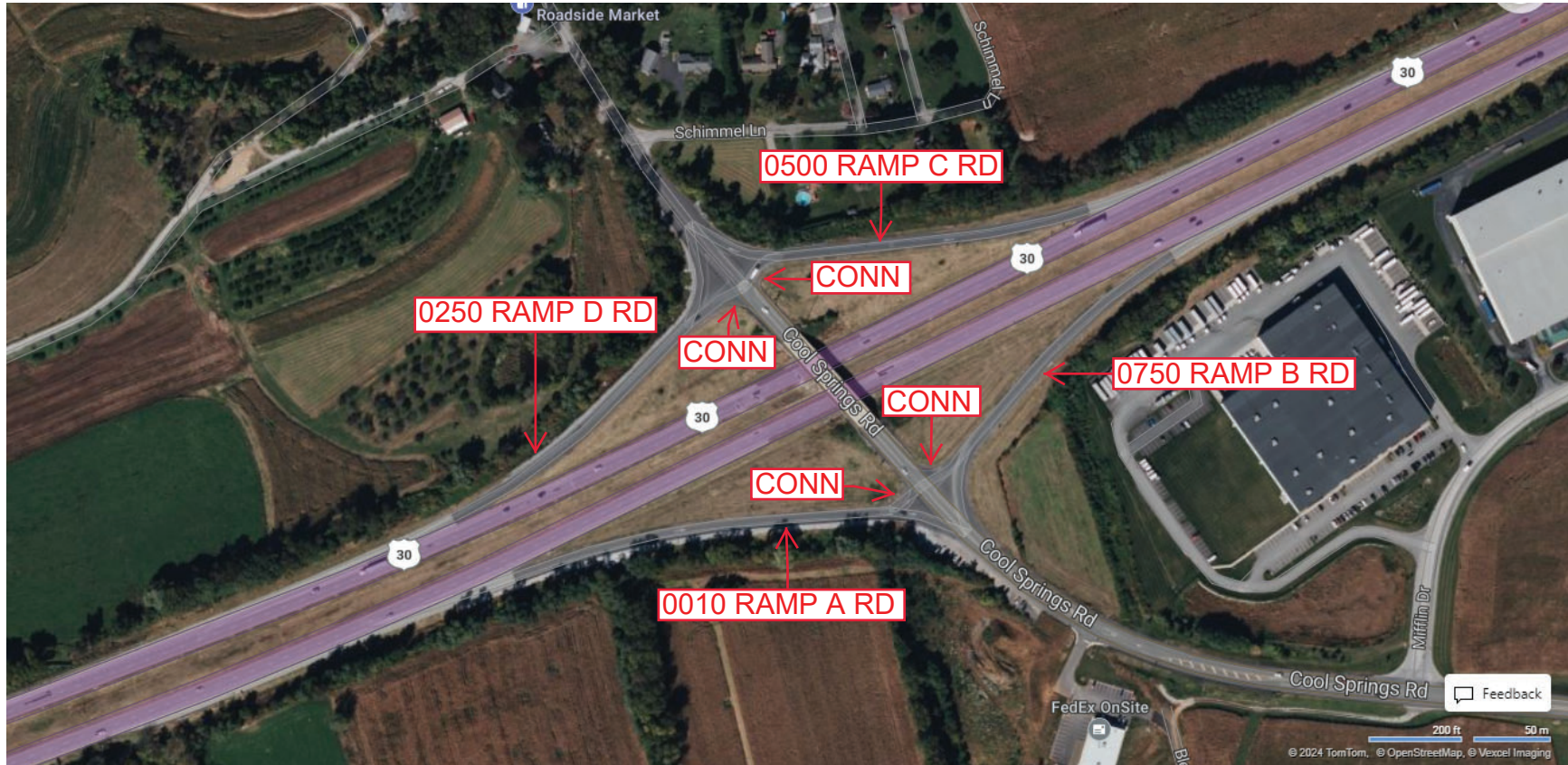
Ramp Segment Number and Ramp Segment Length Information:

Segment	Length	Segment	Length	Segment	Length	Segment	Length
0010	0973						
0250	0812						
0500	0835						
0750	0810						

Primary Route  
Interchange Exit  
Number

Secondary Route  
Interchange Exit  
Number

PennDOT Type 10 Map View:



Privacy Choices Consumer Health Privacy

Last Date Modified: Dec 20, 2024

County: 66

# RMS Interchange Information

Print Form

Bureau of Maintenance & Operations  
Asset Management Division



Interchange Number: 8013

Interchange Name: MARKET STREET INT

Intersecting SR's: I-83, PA 462, SR 3025 Philadelphia St & SR 3027 Belmont St

Ramp Segment Number and Ramp Segment Length Information:

Segment	Length	Segment	Length	Segment	Length	Segment	Length
0010	1064	0512	0590				
0020	0955	0750	0483				
0250	0446						
0260	0392						
0502	0479						

Primary Route Interchange Exit Number: 19

Secondary Route Interchange Exit Number: 19A, 19B

PennDOT Type 10 Map View:



Last Date Modified: Dec 20, 2024

County: **66**

# RMS Interchange Information

Print Form

Bureau of Maintenance & Operations  
Asset Management Division



Interchange Number: **8015**

Interchange Name: **ARSENAL ROAD INT**

Intersecting SR's: **I-83 VFW of Mem Hw & US 30 Arsenal Rd**

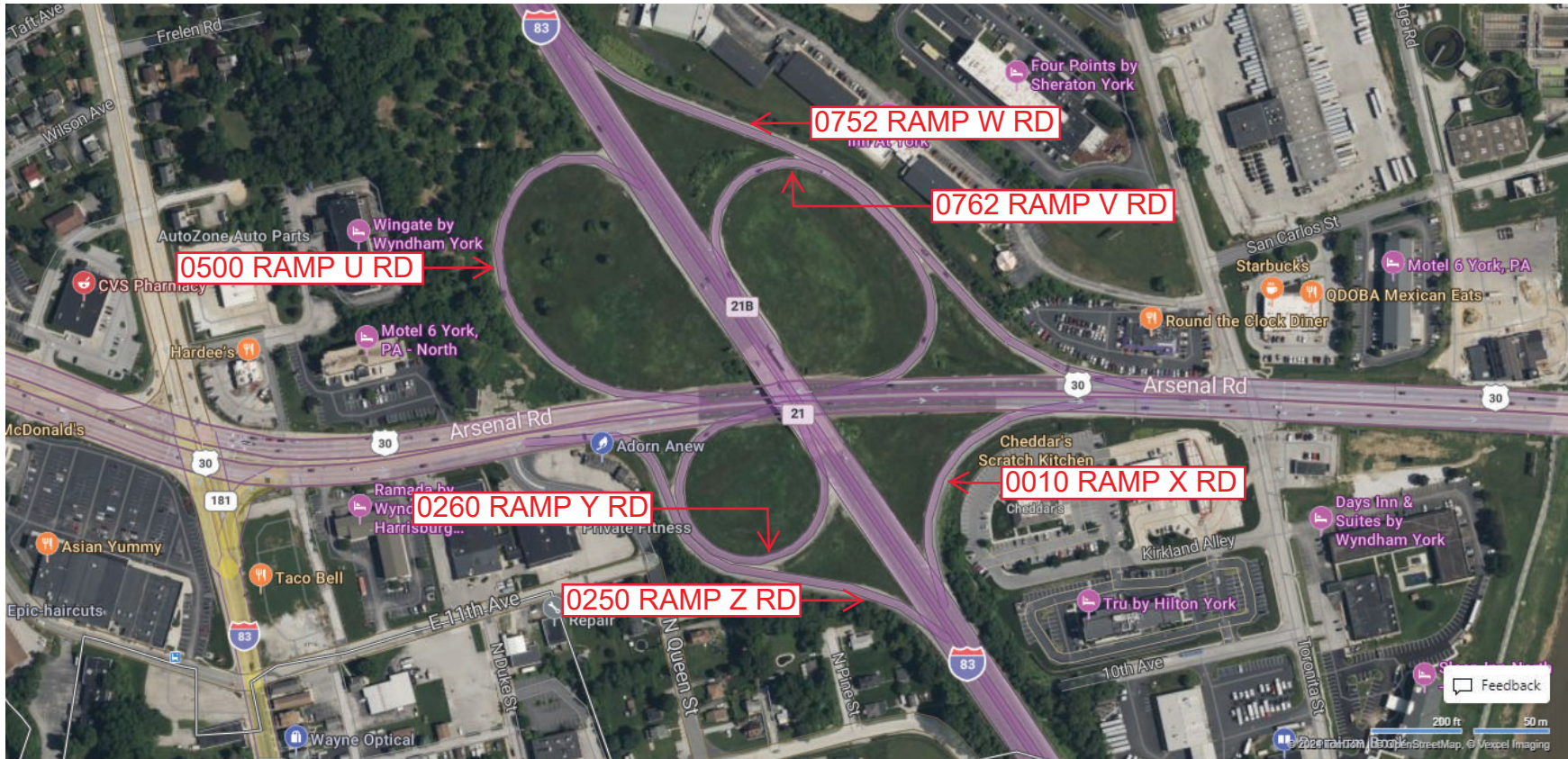
Ramp Segment Number and Ramp Segment Length Information:

Segment	Length	Segment	Length	Segment	Length	Segment	Length
<b>0010</b>	<b>0383</b>	<b>0762</b>	<b>0915</b>				
<b>0250</b>	<b>0796</b>						
<b>0260</b>	<b>0621</b>						
<b>0500</b>	<b>0754</b>						
<b>0752</b>	<b>1277</b>						

Primary Route Interchange Exit Number: **21**

Secondary Route Interchange Exit Number: **21A**

PennDOT Type 10 Map View:



Privacy Choices Consumer Health Privacy

© 2024 Microsoft

Last Date Modified:

Dec 26, 2024

County: 66

# RMS Interchange Information

Print Form

Interchange Number: 8017

Bureau of Maintenance & Operations  
Asset Management Division



Interchange Name: NORTH GEORGE STREET INT

Intersecting SR's: I-83 VFW of US Mem Hw & PA 181 George St

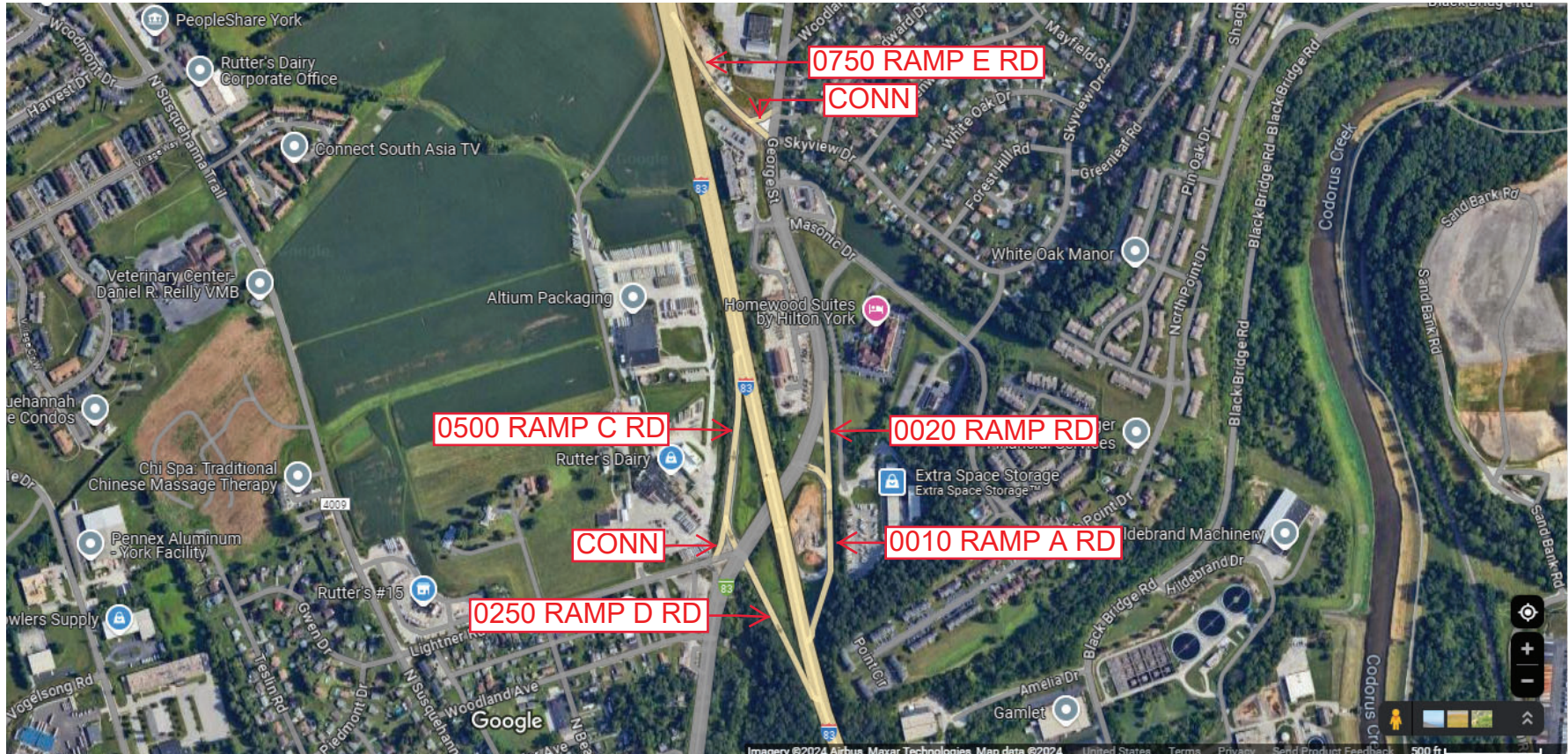
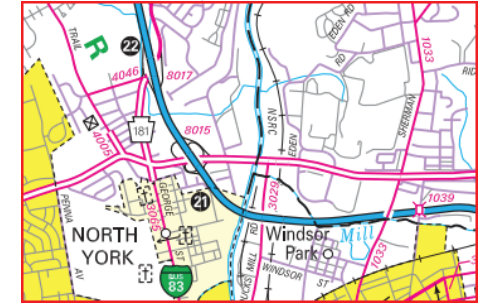
Ramp Segment Number and Ramp Segment Length Information:

Segment	Length	Segment	Length	Segment	Length	Segment	Length
0010	0914						
0020	0350						
0250	0680						
0500	0873						
0750	0646						

Primary Route Interchange Exit Number: 22

Secondary Route Interchange Exit Number

PennDOT Type 10 Map View:



Last Date Modified: Jan 8, 2025

County: **66**

# RMS Interchange Information

Print Form

Bureau of Maintenance & Operations  
Asset Management Division



Interchange Number: **8019**

Interchange Name: **EMIGSVILLE INT**

Intersecting SR's: **I-83, PA 283 Church Rd & SR 1031 Board Rd**

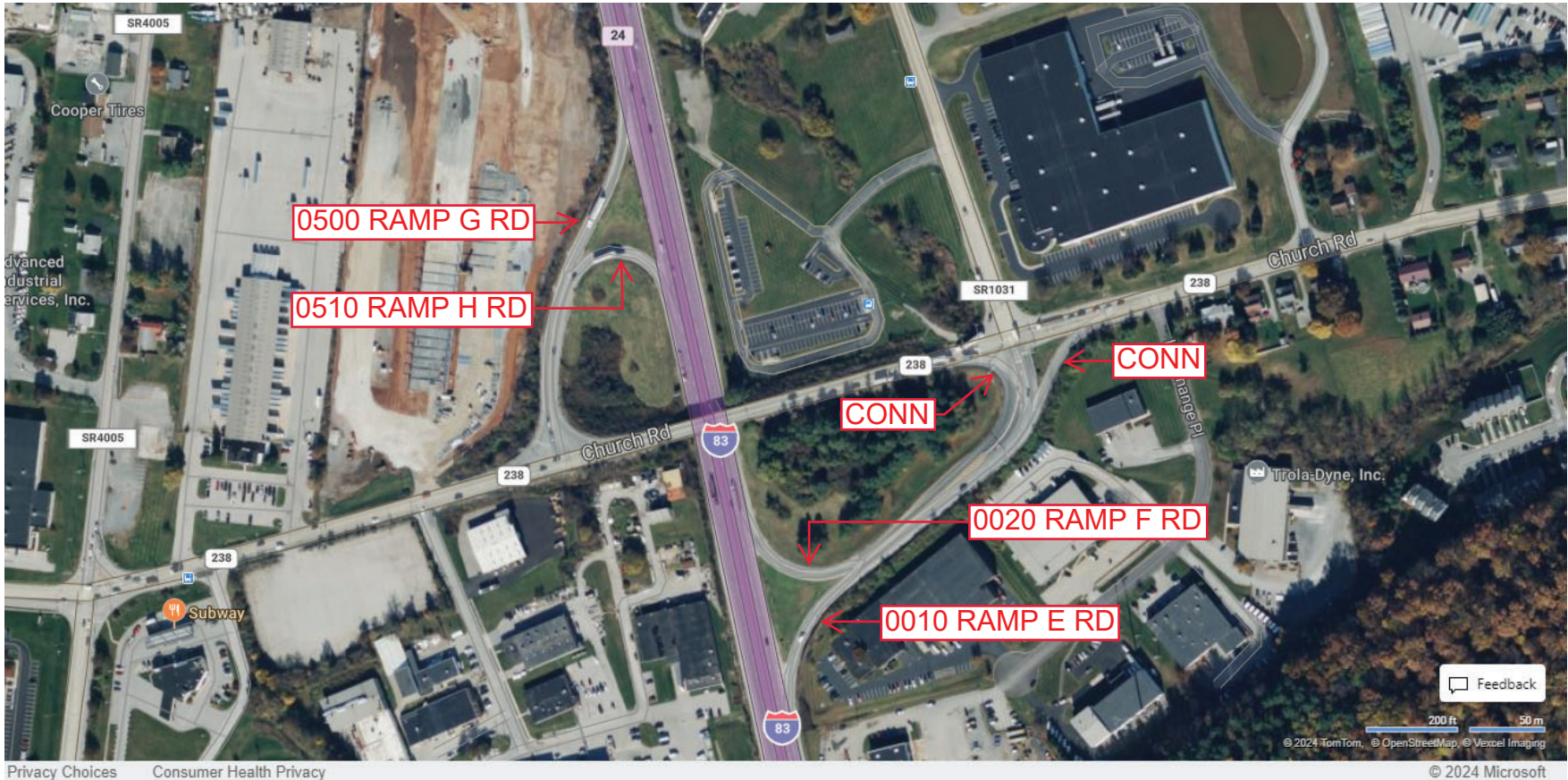
Ramp Segment Number and Ramp Segment Length Information:

Segment	Length	Segment	Length	Segment	Length	Segment	Length
<b>0010</b>	<b>0922</b>						
<b>0020</b>	<b>0862</b>						
<b>0500</b>	<b>0727</b>						
<b>0510</b>	<b>0610</b>						

Primary Route Interchange Exit Number: **24**

Secondary Route Interchange Exit Number

PennDOT Type 10 Map View:



Last Date Modified: **Dec 26, 2024**



County: 66

# RMS Interchange Information

Bureau of Maintenance & Operations  
Asset Management Division

Print Form



Interchange Number: 8021

Interchange Name: STRINESTOWN INT

Intersecting SR's: I-83 VFW of Mem Hw & PA 297 Susquehanna Tr

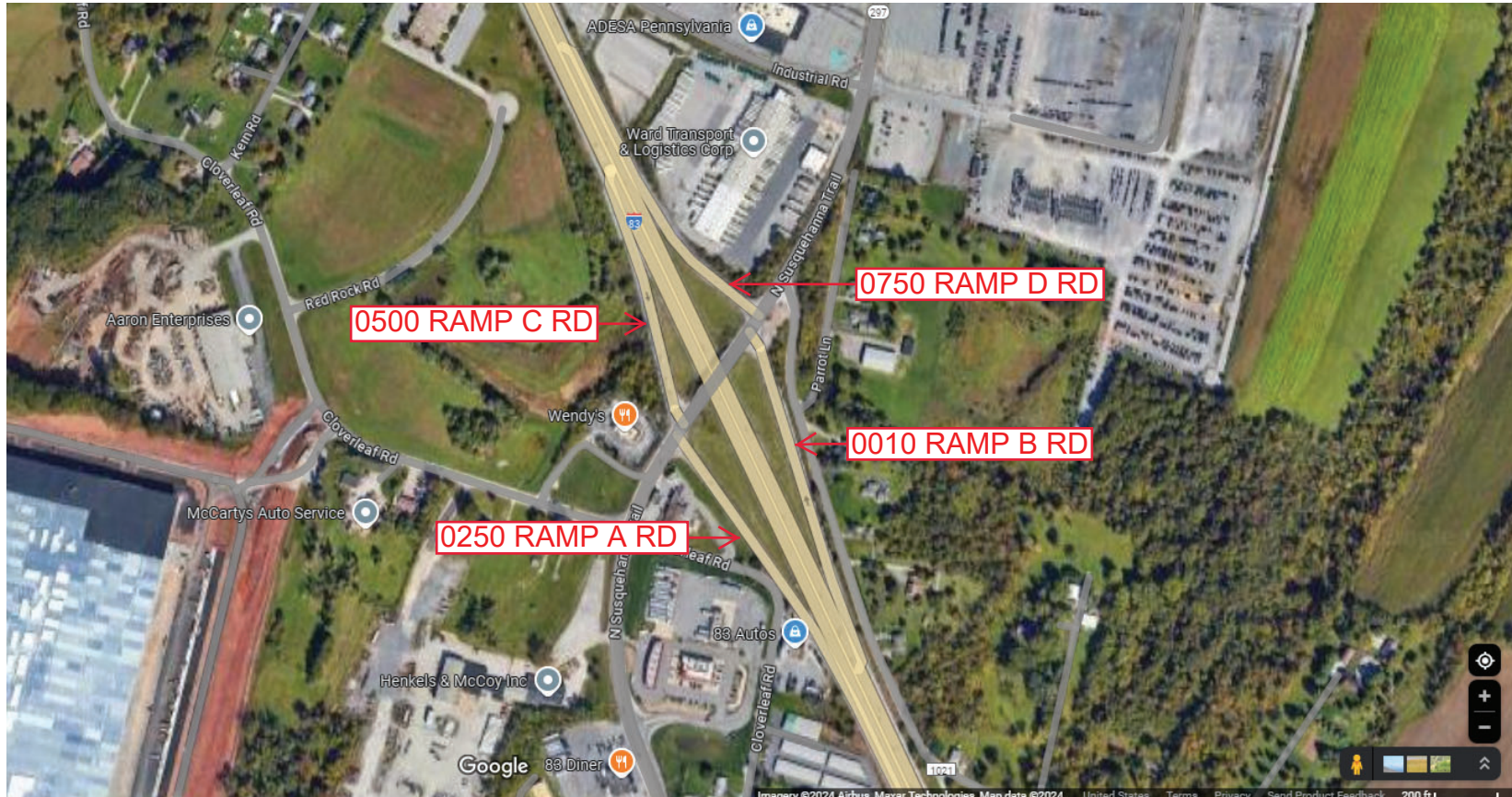
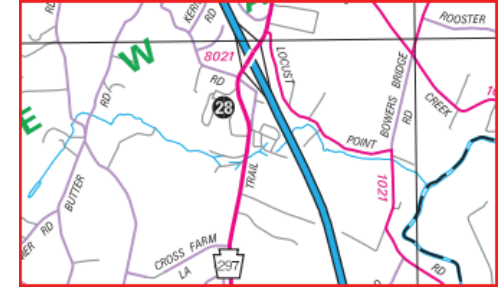
Ramp Segment Number and Ramp Segment Length Information:

Segment	Length	Segment	Length	Segment	Length	Segment	Length
0010	0832						
0250	0689						
0500	0523						
0750	0403						

Primary Route Interchange Exit Number: 28

Secondary Route Interchange Exit Number

PennDOT Type 10 Map View:



Last Date Modified: Dec 27, 2024

County: 66

# RMS Interchange Information

Print Form

Bureau of Maintenance & Operations  
Asset Management Division



Interchange Number: 8023

Interchange Name: NEWBERRYTOWN INT

Intersecting SR's: I-83 VFW of Mem Hw & PA 382 Old Trail Rd

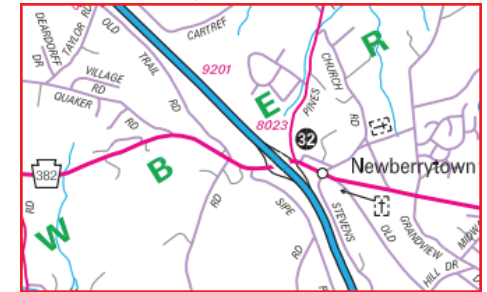
Ramp Segment Number and Ramp Segment Length Information:

Segment	Length	Segment	Length	Segment	Length	Segment	Length
0010	0473						
0250	0473						
0500	0354						
0750	0551						

Primary Route Interchange Exit Number: 32

Secondary Route Interchange Exit Number

PennDOT Type 10 Map View:



Last Date Modified:

Dec 27, 2024

County: **66**

# RMS Interchange Information

Print Form

Bureau of Maintenance & Operations  
Asset Management Division



Interchange Number: **8025**

Interchange Name: **YOCUMTOWN INT**

Intersecting SR's: **I-83, PA 392 Old Trail Rd & SR 4053 Old Trail Rd**

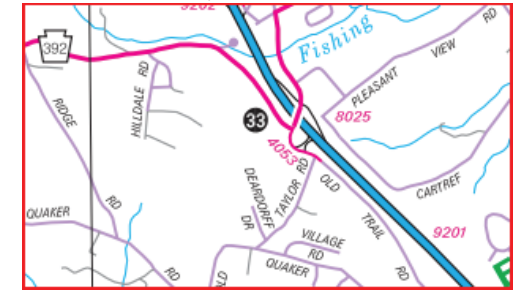
Ramp Segment Number and Ramp Segment Length Information:

Segment	Length	Segment	Length	Segment	Length	Segment	Length
<b>0010</b>	<b>0495</b>						
<b>0250</b>	<b>0343</b>						
<b>0260</b>	<b>0357</b>						
<b>0750</b>	<b>0728</b>						

Primary Route Interchange Exit Number: **33**

Secondary Route Interchange Exit Number:

PennDOT Type 10 Map View:



Privacy Choices Consumer Health Privacy

Feedback  
200 ft 50 m  
© 2024 TomTom, © OpenStreetMap, © Vexcel Imaging

© 2024 Microsoft

Last Date Modified:

Dec 27, 2024

County: 66

# RMS Interchange Information

Print Form

Interchange Number: 8027

Bureau of Maintenance & Operations  
Asset Management Division



Interchange Name: LEWISBERRY INT

Intersecting SR's: I-83, SR 1007 Salem Rd & SR 4007 Yorktown Rd

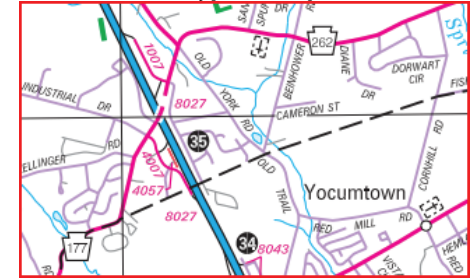
Ramp Segment Number and Ramp Segment Length Information:

Segment	Length	Segment	Length	Segment	Length	Segment	Length
0250	0515						
0260	0204						
0752	0105						
0762	0203						

Primary Route Interchange Exit Number: 35

Secondary Route Interchange Exit Number

PennDOT Type 10 Map View:



Last Date Modified: Dec 27, 2024

County: 66

# RMS Interchange Information

Print Form

Interchange Number: 8029

Bureau of Maintenance & Operations  
Asset Management Division



Interchange Name: FISHING CREEK INT

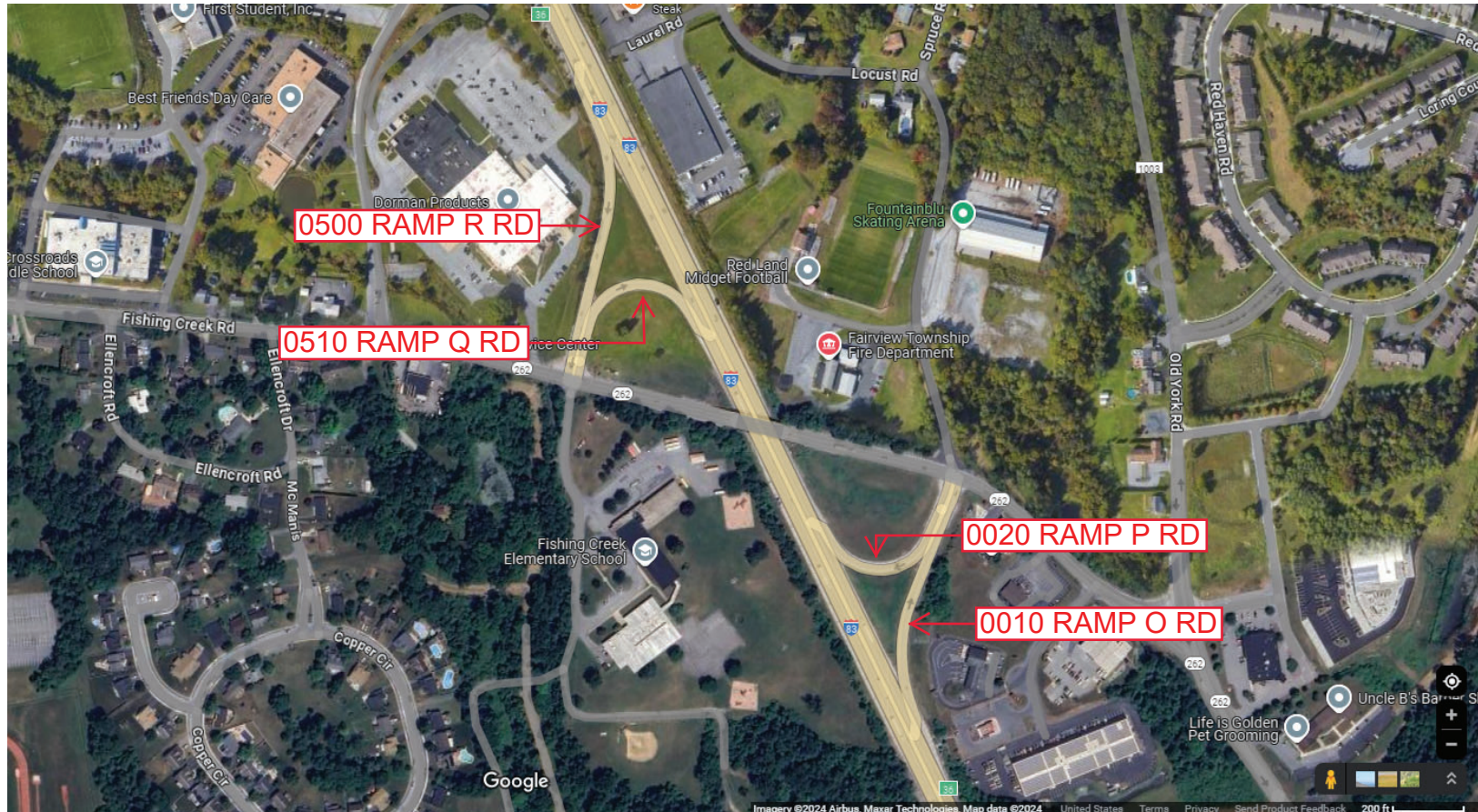
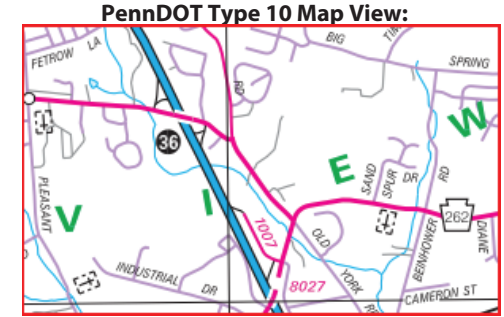
Intersecting SR's: I-83 VFW of Mem Hw & PA 262 Fishing Creek Rd

Ramp Segment Number and Ramp Segment Length Information:

Segment	Length	Segment	Length	Segment	Length	Segment	Length
0010	0576						
0020	0460						
0500	0624						
0510	0463						

Primary Route Interchange Exit Number: 36

Secondary Route Interchange Exit Number



Last Date Modified:

Dec 27, 2024

County: 66

# RMS Interchange Information

Print Form

Bureau of Maintenance & Operations  
Asset Management Division



Interchange Number: 8031

Interchange Name: REESERS SUMMIT INT

Intersecting SR's: I-83 VFW of US Mem Hw, T970 Evergreen Rd &

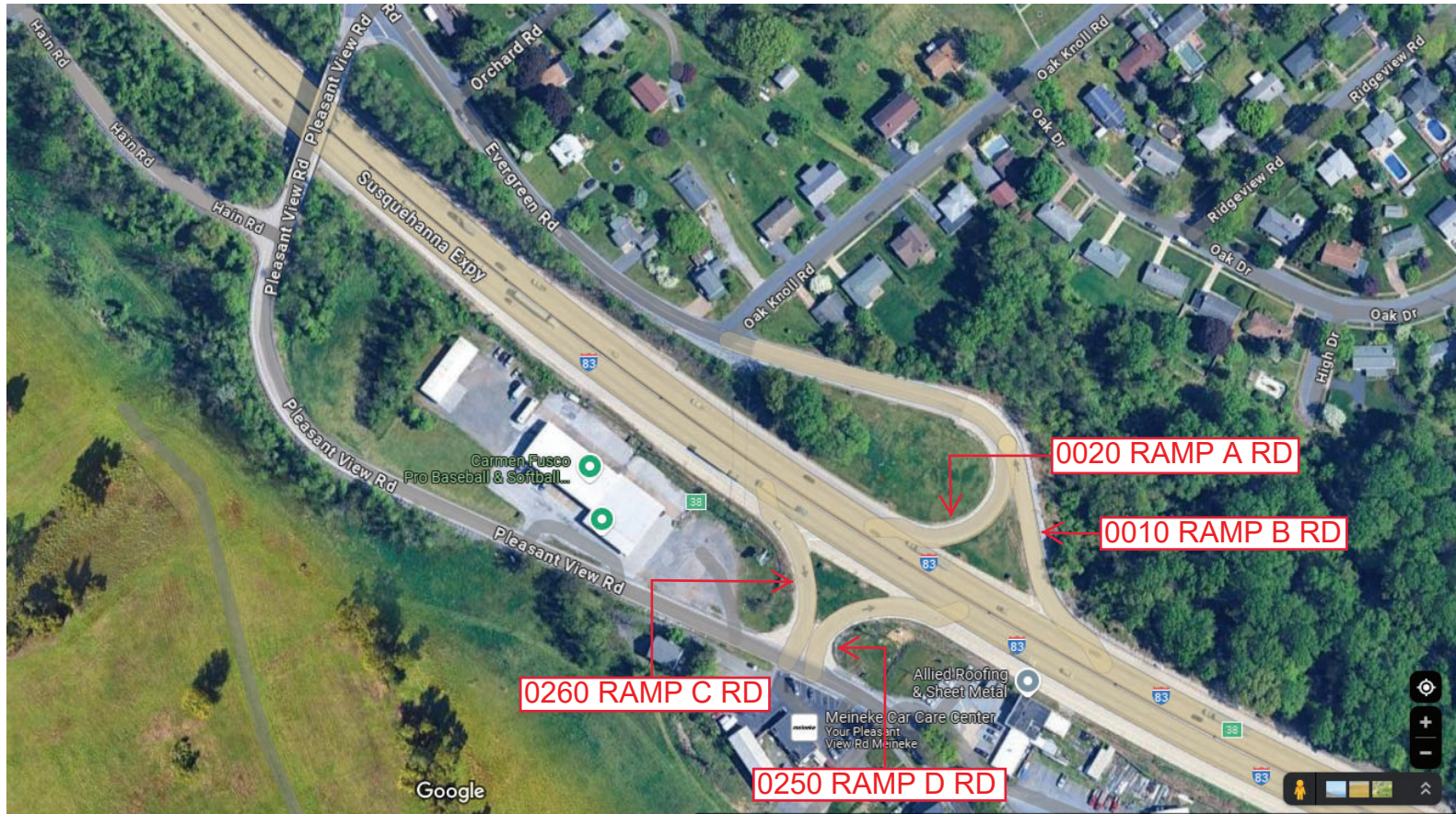
Ramp Segment Number and Ramp Segment Length Information:

Segment	Length	Segment	Length	Segment	Length	Segment	Length
0010	0293						
0020	0231						
0250	0153						
0260	0149						

Primary Route Interchange Exit Number: 38

Secondary Route Interchange Exit Number

PennDOT Type 10 Map View:



Last Date Modified: Dec 31, 2024

County: 66

# RMS Interchange Information

Bureau of Maintenance & Operations  
Asset Management Division

Print Form



Interchange Number: 8033

Interchange Name: LEWISBERRY ROAD INT

Intersecting SR's: I-83 VFW of US Mem Hw & PA 114 Lewisberry Rd

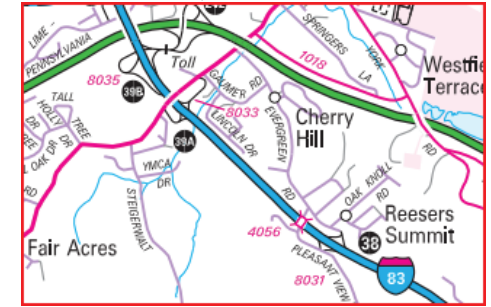
Ramp Segment Number and Ramp Segment Length Information:

Segment	Length	Segment	Length	Segment	Length	Segment	Length
0010	0982						
0020	1006						
0250	0784						
0260	0756						

Primary Route Interchange Exit Number: 39A

Secondary Route Interchange Exit Number

PennDOT Type 10 Map View:



County: **66**

# RMS Interchange Information

Print Form

Bureau of Maintenance & Operations  
Asset Management Division



Interchange Number: **8035**

Interchange Name: **PA TURNPIKE EXIT**

Intersecting SR's: **I-83 of US Mem Hw & Turnpike Ramp Rd**

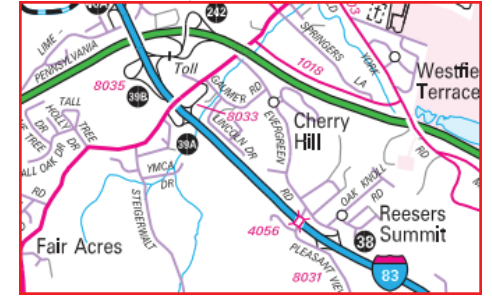
Ramp Segment Number and Ramp Segment Length Information:

Segment	Length	Segment	Length	Segment	Length	Segment	Length
<b>0250</b>	<b>1143</b>						
<b>0260</b>	<b>1058</b>						

Primary Route Interchange Exit Number: **242**

Secondary Route Interchange Exit Number: **39B**

PennDOT Type 10 Map View:





County: **66**

# RMS Interchange Information

Print Form

Bureau of Maintenance & Operations  
Asset Management Division



Interchange Number: **8037**

Interchange Name: **LIMEKILN ROAD INT**

Intersecting SR's: **I-83 VFW of US Mem Hw & T955 Limekiln Rd**

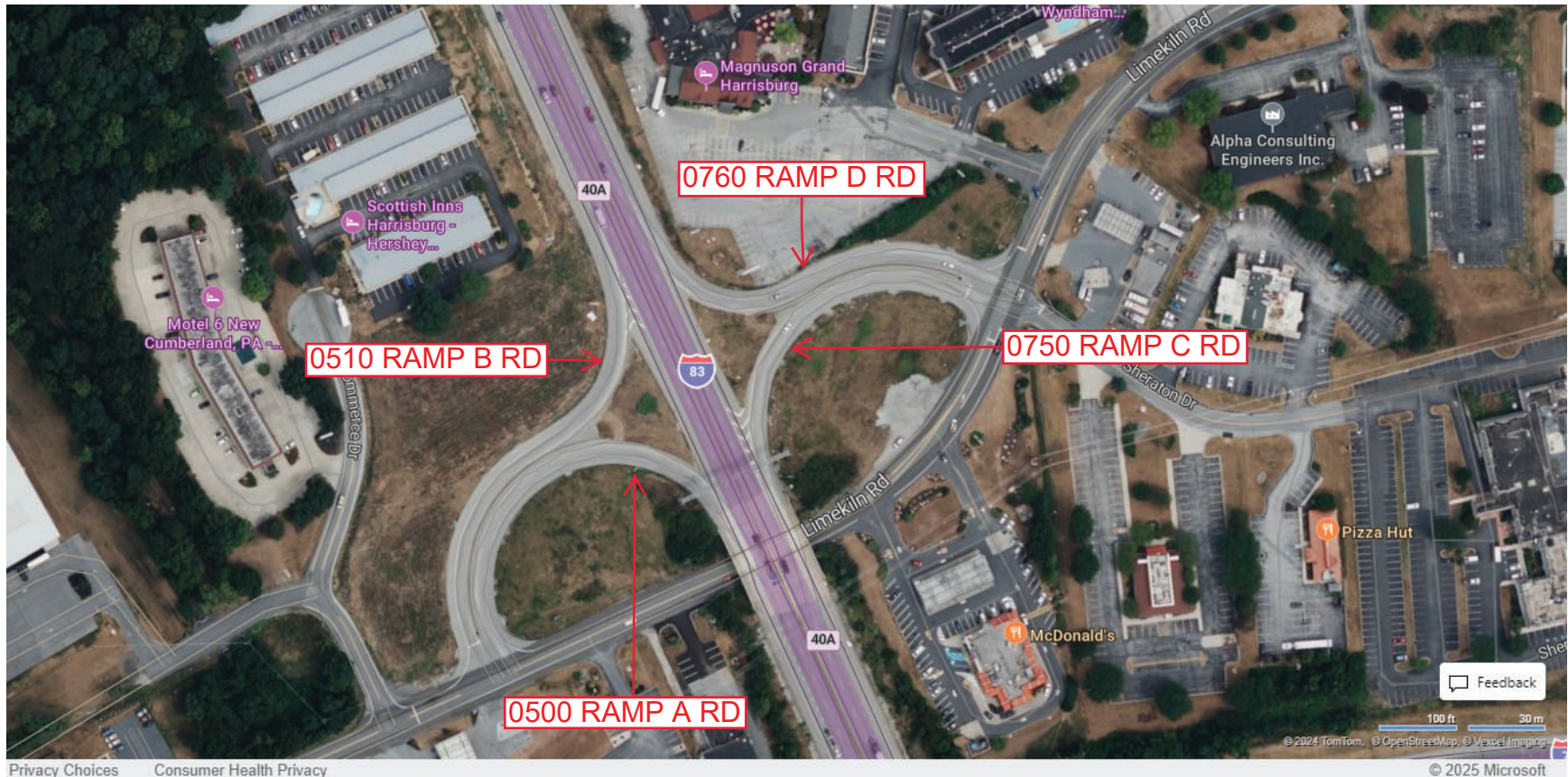
Ramp Segment Number and Ramp Segment Length Information:

Segment	Length	Segment	Length	Segment	Length	Segment	Length
<b>0500</b>	<b>0496</b>						
<b>0510</b>	<b>0528</b>						
<b>0750</b>	<b>0410</b>						
<b>0760</b>	<b>0425</b>						

Primary Route Interchange Exit Number: **40A**

Secondary Route Interchange Exit Number

PennDOT Type 10 Map View:



Privacy Choices Consumer Health Privacy

Last Date Modified: **Jan 2, 2025**

County: 66

# RMS Interchange Information

Bureau of Maintenance & Operations  
Asset Management Division

Print Form



Interchange Number: 8039

Interchange Name: PA 74

Intersecting SR's: PA 74 S Queen St & SR 3023 Hollywood Dr

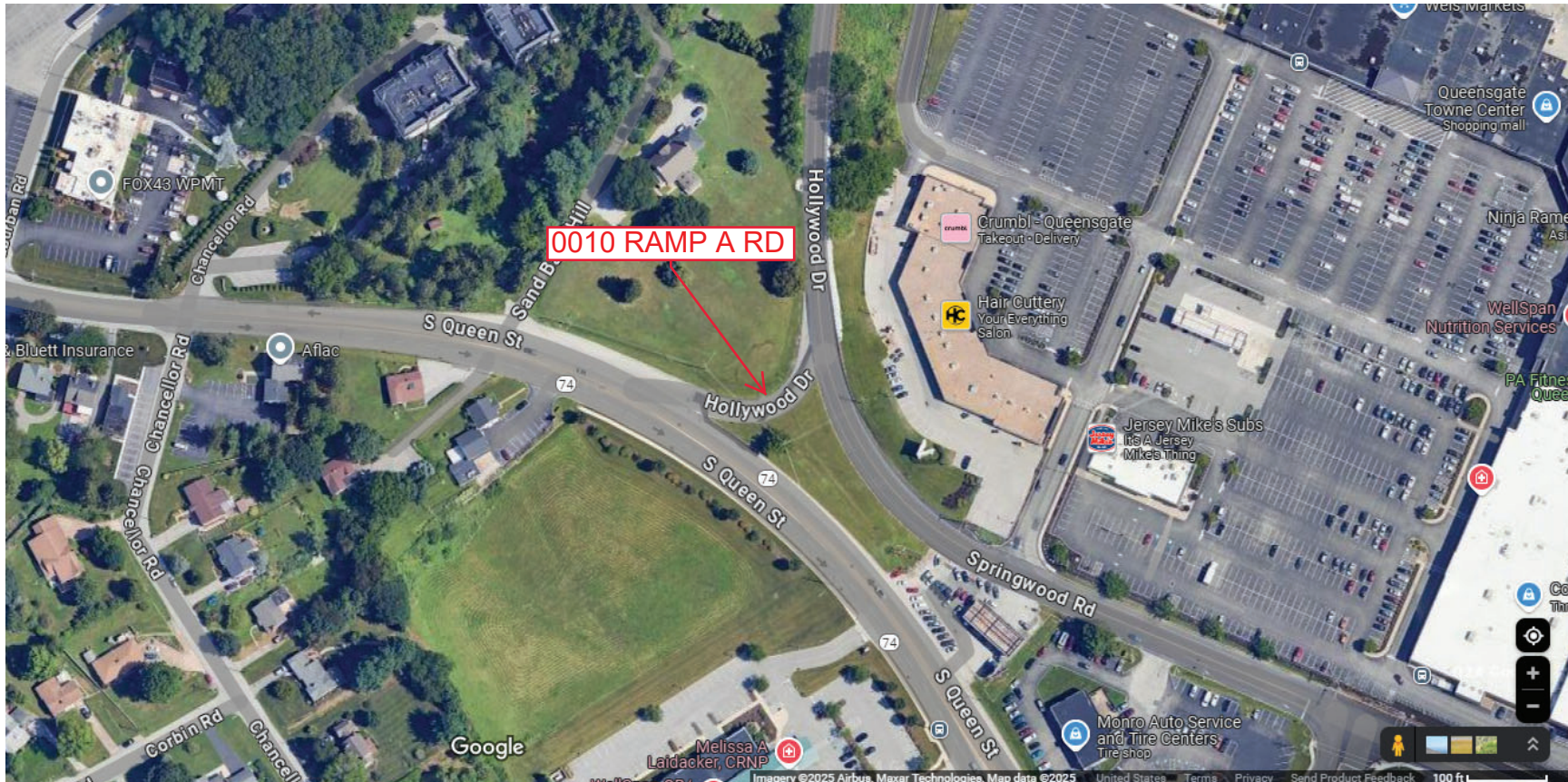
Ramp Segment Number and Ramp Segment Length Information:

Segment	Length	Segment	Length	Segment	Length	Segment	Length
0010	0147						

Primary Route Interchange Exit Number

Secondary Route Interchange Exit Number

PennDOT Type 10 Map View:



Last Date Modified: Jan 2, 2025

County: 66

# RMS Interchange Information

Print Form

Interchange Number: 8043

Bureau of Maintenance & Operations  
Asset Management Division



Interchange Name: VALLEY GREEN MALL

Intersecting SR's: I-83 VFW of US Mem Hw & T950 Robin Hood Dr

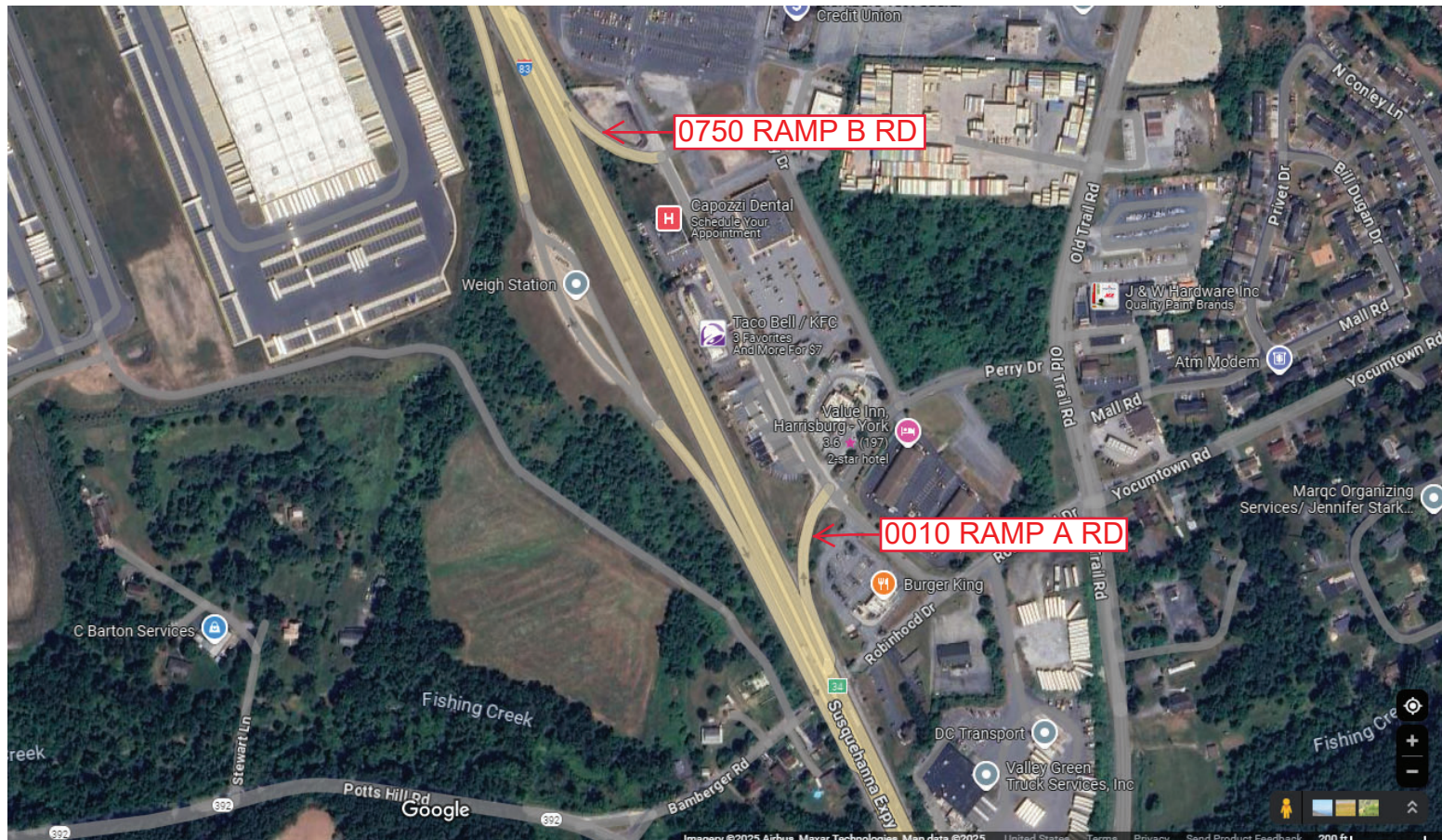
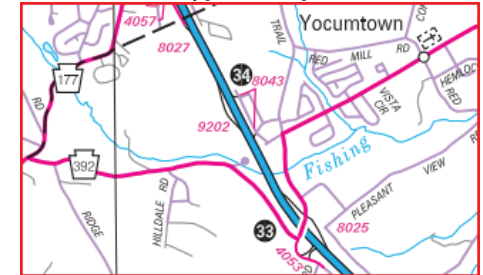
Ramp Segment Number and Ramp Segment Length Information:

Segment	Length	Segment	Length	Segment	Length	Segment	Length
0010	0247						
0750	0252						

Primary Route Interchange Exit Number: 34

Secondary Route Interchange Exit Number

PennDOT Type 10 Map View:



Last Date Modified: Jan 3, 2025

County: **66**

# RMS Interchange Information

Print Form

Interchange Number: **8045**

Bureau of Maintenance & Operations  
Asset Management Division



Interchange Name: **I-83 & SR 3075 BUSINESS 83 RD**

Intersecting SR's: **I-83 VFW of US Mem Hw & SR 3075 Business 83 Rd**

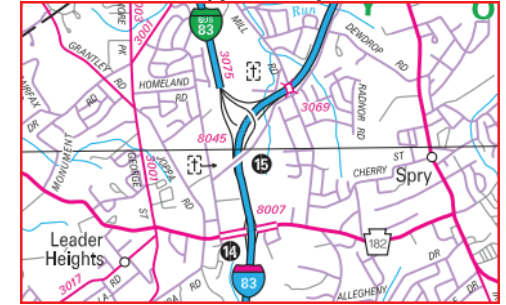
Ramp Segment Number and Ramp Segment Length Information:

Segment	Length	Segment	Length	Segment	Length	Segment	Length
<b>0010</b>	<b>1788</b>						
<b>0250</b>	<b>1202</b>						
<b>0260</b>	<b>1657</b>						
<b>0500</b>	<b>1067</b>						

Primary Route Interchange Exit Number: **15**

Secondary Route Interchange Exit Number

PennDOT Type 10 Map View:



Privacy Choices Consumer Health Privacy

Feedback

500 ft 100 m

© 2025 Microsoft

Last Date Modified:

Jan 3, 2025

County: 66

# RMS Interchange Information

Print Form

Bureau of Maintenance & Operations  
Asset Management Division



Interchange Number: 9201

Interchange Name: I-83 NB SHREWBURY WELCOME CENTER

Intersecting SR's: I-80 VFW of US Mem Hw

Ramp Segment Number and Ramp Segment Length Information:

Segment	Length	Segment	Length	Segment	Length	Segment	Length
0010	1505						

Primary Route Interchange Exit Number

Secondary Route Interchange Exit Number

PennDOT Type 10 Map View:



0010 WELCOME CENTER RD

Last Date Modified:

Jan 3, 2025

County: 66

# RMS Interchange Information

Print Form

Bureau of Maintenance & Operations  
Asset Management Division



Interchange Number: 9202

Interchange Name: I-83 NB NEWBERRY WEIGH STATION

Intersecting SR's: I-80 VFW of US Mem Hw

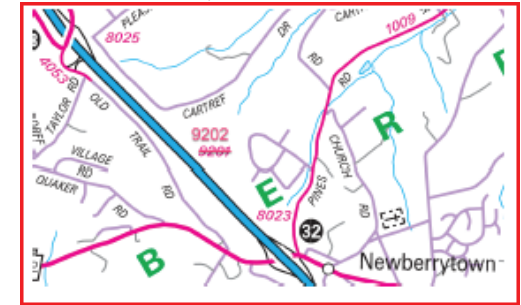
Ramp Segment Number and Ramp Segment Length Information:

Segment	Length	Segment	Length	Segment	Length	Segment	Length
0010	1512						

Primary Route Interchange Exit Number

Secondary Route Interchange Exit Number

PennDOT Type 10 Map View:



Last Date Modified: Jan 3, 2025

County: **66**

# RMS Interchange Information

Bureau of Maintenance & Operations  
Asset Management Division

Print Form



Interchange Number: **9203**

Interchange Name: **I-83 NEWBERRY WEIGH STATION**

Intersecting SR's: **I-83 VFW of US MemHw**

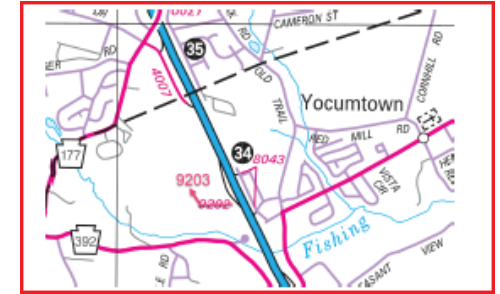
Ramp Segment Number and Ramp Segment Length Information:

Segment	Length	Segment	Length	Segment	Length	Segment	Length
<b>0010</b>	<b>1503</b>						

Primary Route  
Interchange Exit  
Number

Secondary Route  
Interchange Exit  
Number

PennDOT Type 10 Map View:



Last Date Modified:

Jan 3, 2025