

County: 05

# RMS Interchange Information

Print Form

Bureau of Maintenance & Operations  
Asset Management Division



Interchange Number: 8001

Interchange Name: SOUTH BREEZEWOOD (I-70)

Intersecting SR's: I-70 & SR 2035 S Breezewood Rd

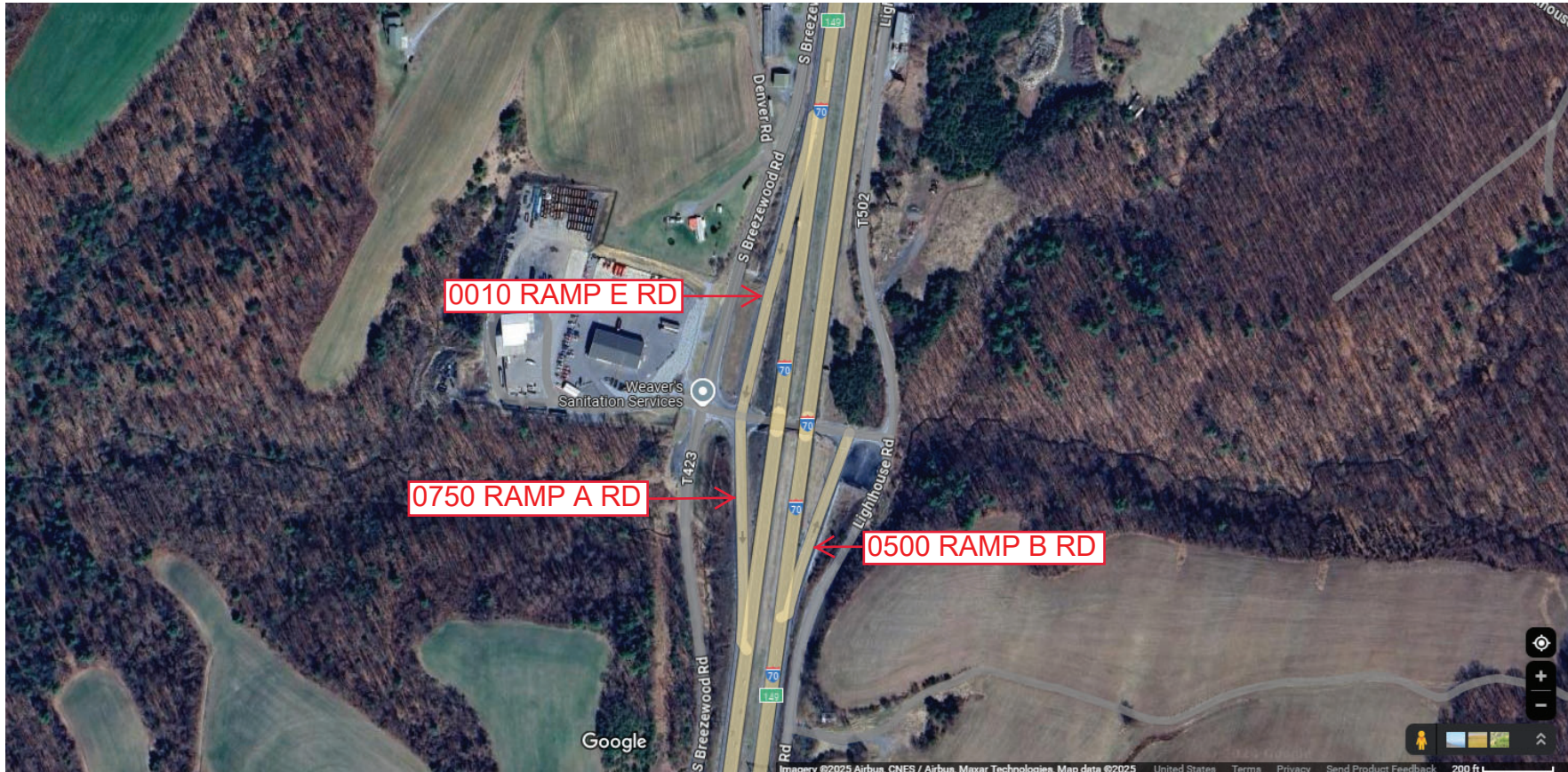
Ramp Segment Number and Ramp Segment Length Information:

Segment	Length	Segment	Length	Segment	Length	Segment	Length
0010	0657						
0500	0403						
0750	0461						

Primary Route Interchange Exit Number: 149

Secondary Route Interchange Exit Number

PennDOT Type 10 Map View:



Last Date Modified: Jan 3, 2025

County: 05

# RMS Interchange Information

Print Form

Bureau of Maintenance & Operations  
Asset Management Division



Interchange Number: 8003

Interchange Name: BEDFORD BORO-MAIN STREET

Intersecting SR's: PA 220 Bud Shuster Hw & SR 4010 Pitt St

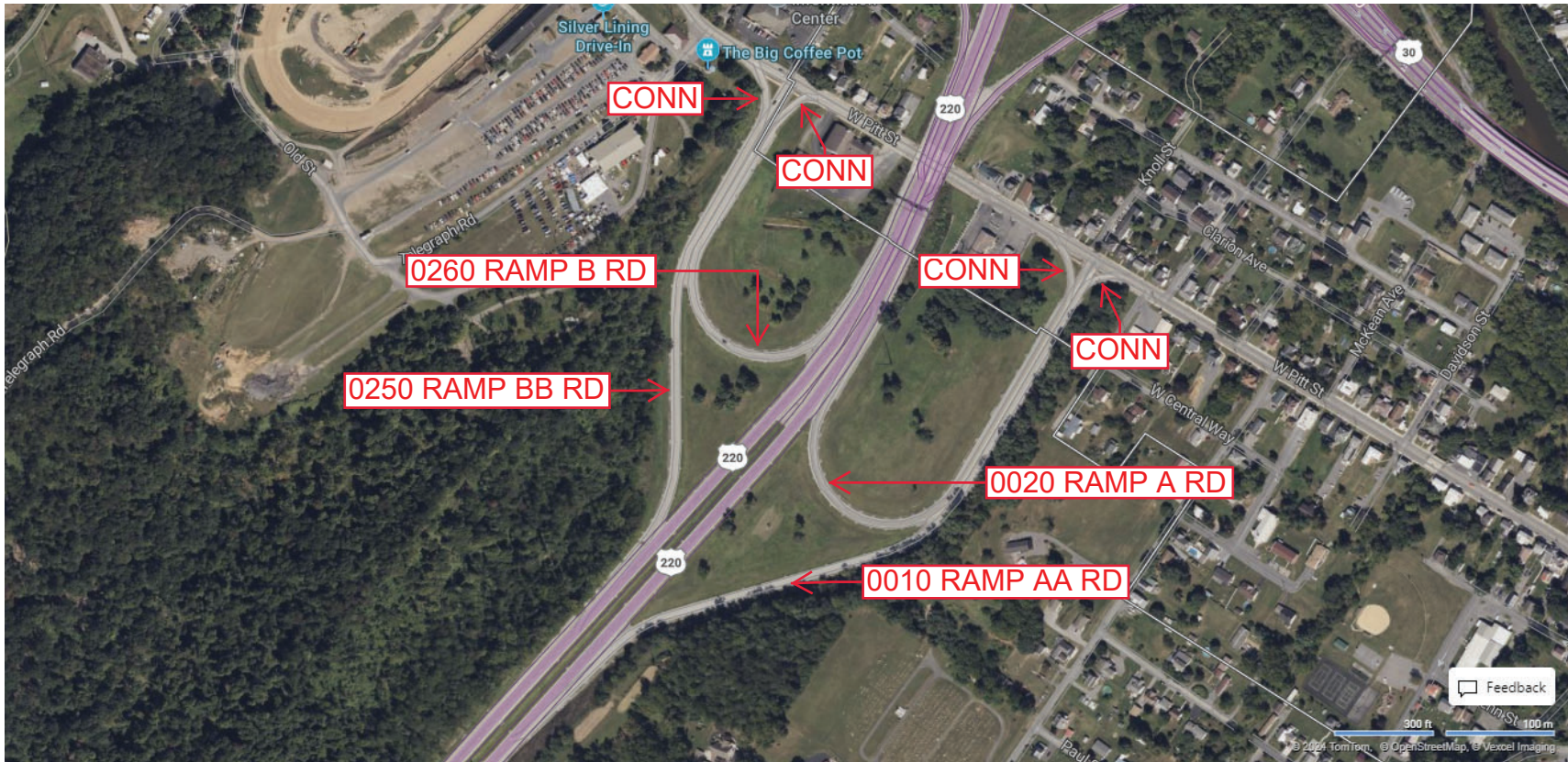
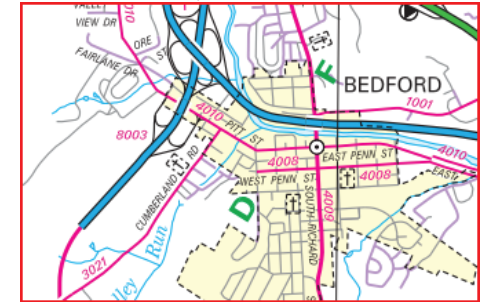
Ramp Segment Number and Ramp Segment Length Information:

Segment	Length	Segment	Length	Segment	Length	Segment	Length
0010	1956						
0020	1525						
0250	1410						
0260	1210						

Primary Route Interchange Exit Number

Secondary Route Interchange Exit Number

PennDOT Type 10 Map View:



Privacy Choices Consumer Health Privacy

© 2025 Microsoft

Last Date Modified:

Jan 6, 2025

County: 05

# RMS Interchange Information

Print Form

Bureau of Maintenance & Operations  
Asset Management Division



Interchange Number: 8004

Interchange Name: EVERETT INT

Intersecting SR's: US 30 Lincoln Hw & SR 1007 Bud Shuster Bp

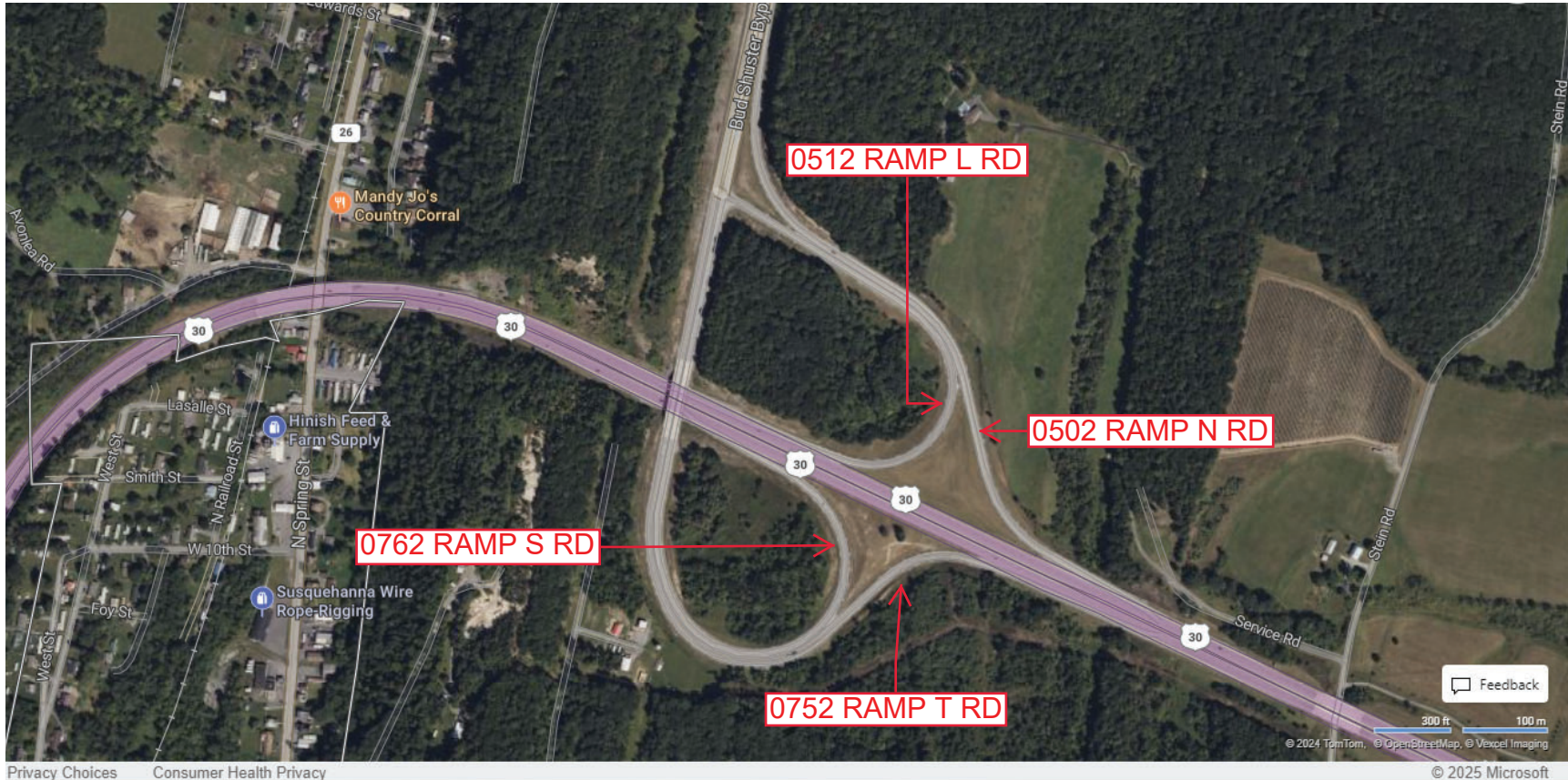
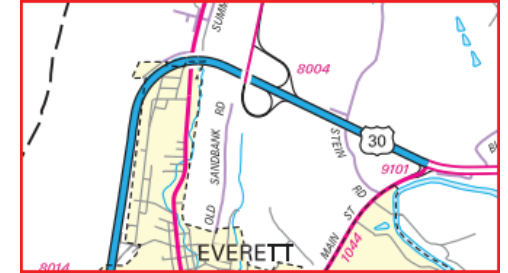
Ramp Segment Number and Ramp Segment Length Information:

Segment	Length	Segment	Length	Segment	Length	Segment	Length
0502	2445						
0512	1831						
0752	2165						
0762	2175						

Primary Route Interchange Exit Number

Secondary Route Interchange Exit Number

PennDOT Type 10 Map View:



Last Date Modified: Jan 6, 2025

County: 05

# RMS Interchange Information

Print Form

Bureau of Maintenance & Operations  
Asset Management Division



Interchange Number: 8005

Interchange Name: EVERETT-GREENSBURG INT

Intersecting SR's: US 30 Lincoln Hw & US 220 Bud Shuster Hw

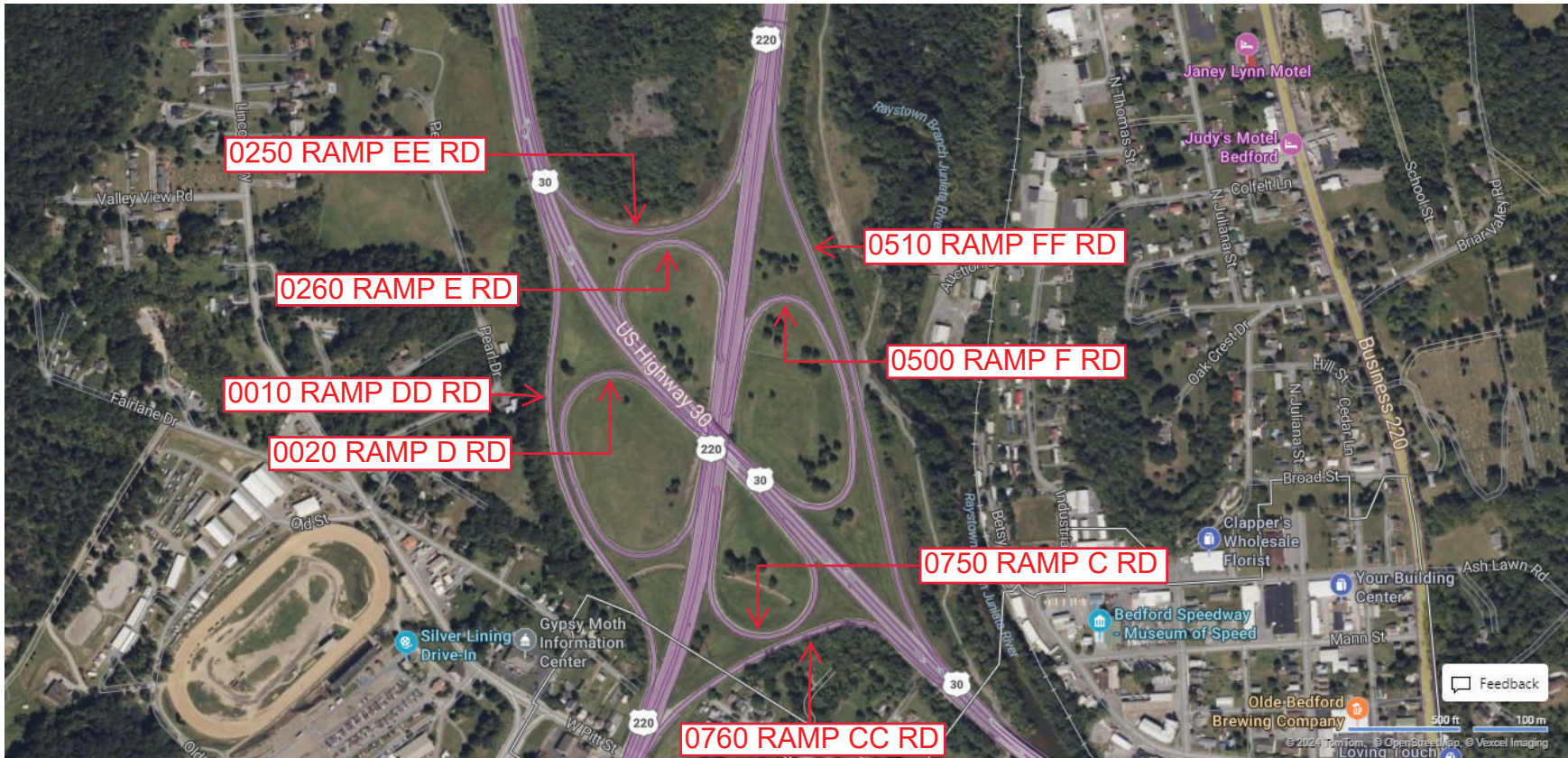
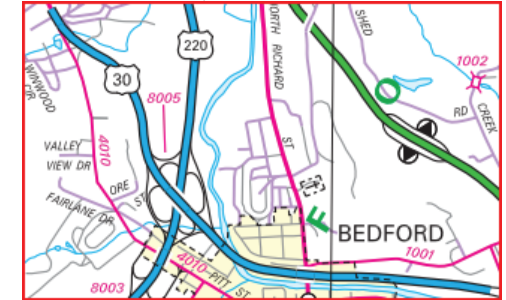
Ramp Segment Number and Ramp Segment Length Information:

Segment	Length	Segment	Length	Segment	Length	Segment	Length
0010	2038	0510	2375				
0020	1481	0750	0884				
0250	1016	0760	1059				
0260	0801						
0500	1519						

Primary Route  
Interchange Exit  
Number

Secondary Route  
Interchange Exit  
Number

PennDOT Type 10 Map View:



Privacy Choices Consumer Health Privacy

© 2025 Microsoft

Last Date Modified:

Jan 6, 2025

County: 05

# RMS Interchange Information

Print Form

Interchange Number: 8007

Bureau of Maintenance & Operations  
Roadway Management Division



Interchange Name: BEDFORD TURNPIKE

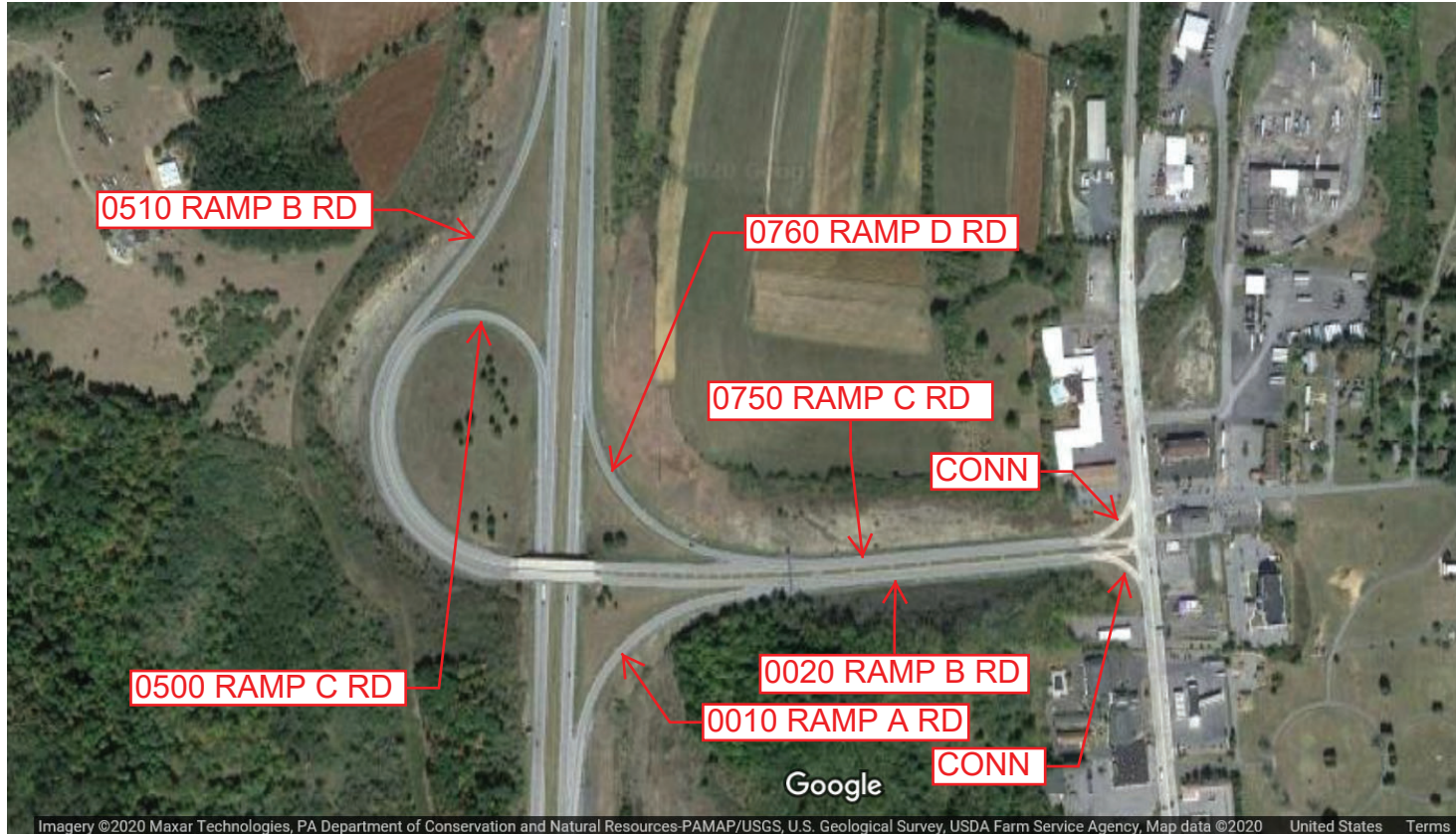
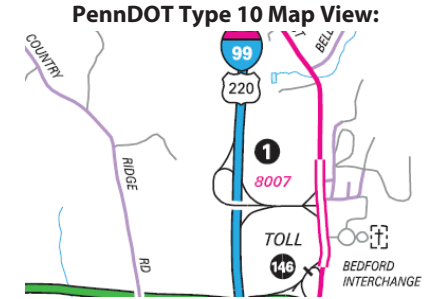
Intersecting SR's: I-99 Bud Shuster Hw & SR 4009 (Bus 220)

Ramp Segment Number and Ramp Segment Length Information:

Segment	Length	Segment	Length	Segment	Length	Segment	Length
0010	0828	0760	0708				
0020	1830						
0500	1801						
0510	2437						
0750	1830						

Primary Route Interchange Exit Number: 1

Secondary Route Interchange Exit Number:



Imagery ©2020 Maxar Technologies, PA Department of Conservation and Natural Resources-PAMAP/USGS, U.S. Geological Survey, USDA Farm Service Agency, Map data ©2020 United States Terms

Last Date Modified: May 13, 2020

County: 05

# RMS Interchange Information

Print Form

Interchange Number: 8008

Bureau of Maintenance & Operations  
Roadway Management Division



Interchange Name: BREEZEWOOD TURNPIKE

Intersecting SR's: US 30 Lincoln Hw

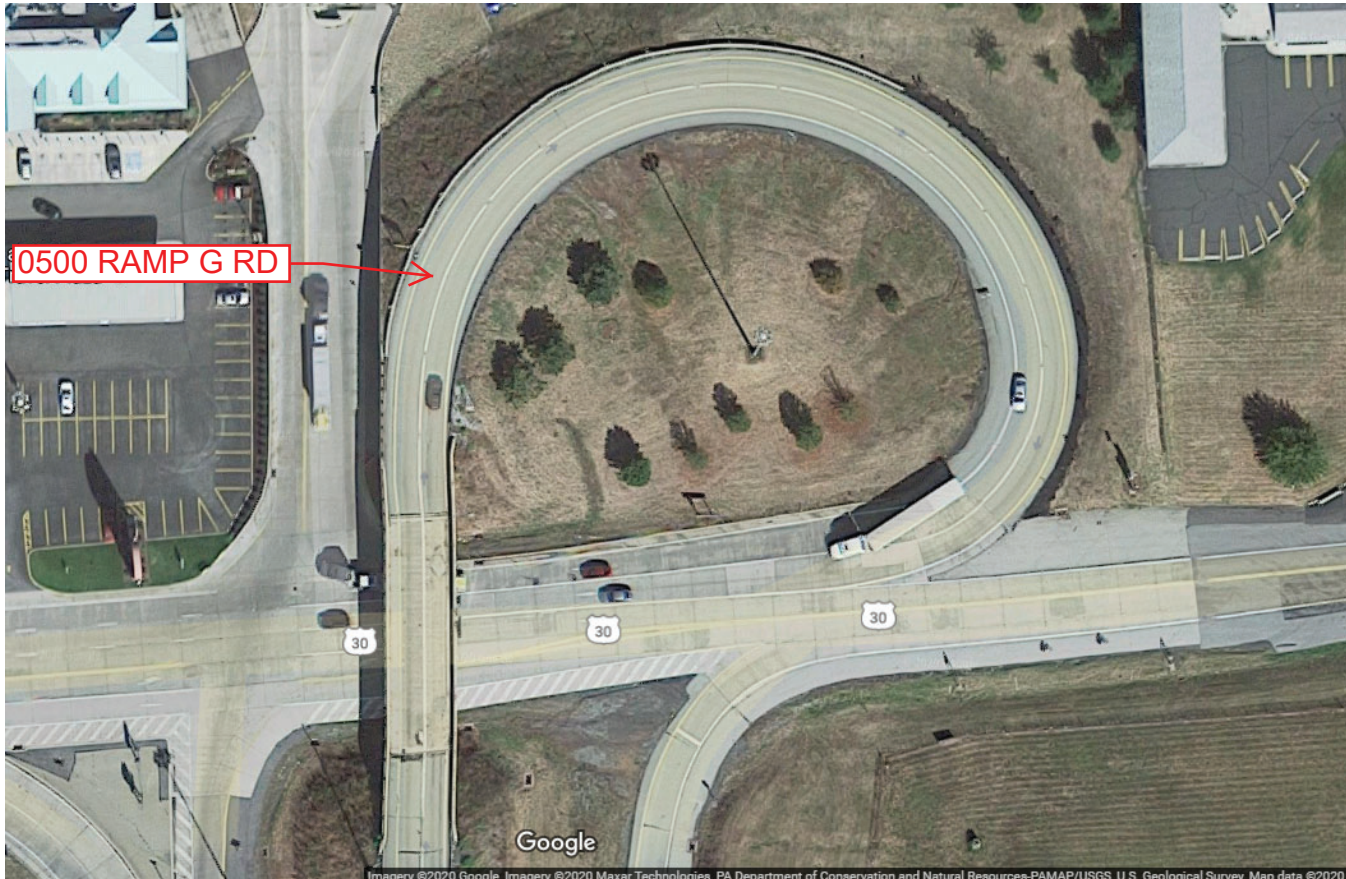
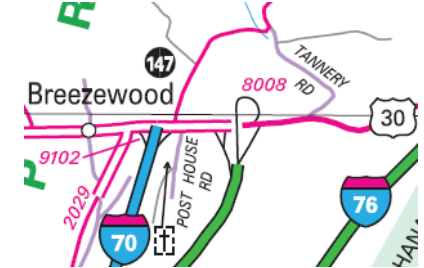
Ramp Segment Number and Ramp Segment Length Information:

Segment	Length	Segment	Length	Segment	Length	Segment	Length
0500	0653						

Primary Route Interchange Exit Number: 161

Secondary Route Interchange Exit Number

PennDOT Type 10 Map View:



Last Date Modified:

May 13, 2020

County: 05

# RMS Interchange Information

Print Form

Interchange Number: 8009

Bureau of Maintenance & Operations  
Roadway Management Division



Interchange Name: CESSNA-FISHERTOWN

Intersecting SR's: I-99 Bud Shuster Hw & PA 56 Quaker Valley Rd

Ramp Segment Number and Ramp Segment Length Information:

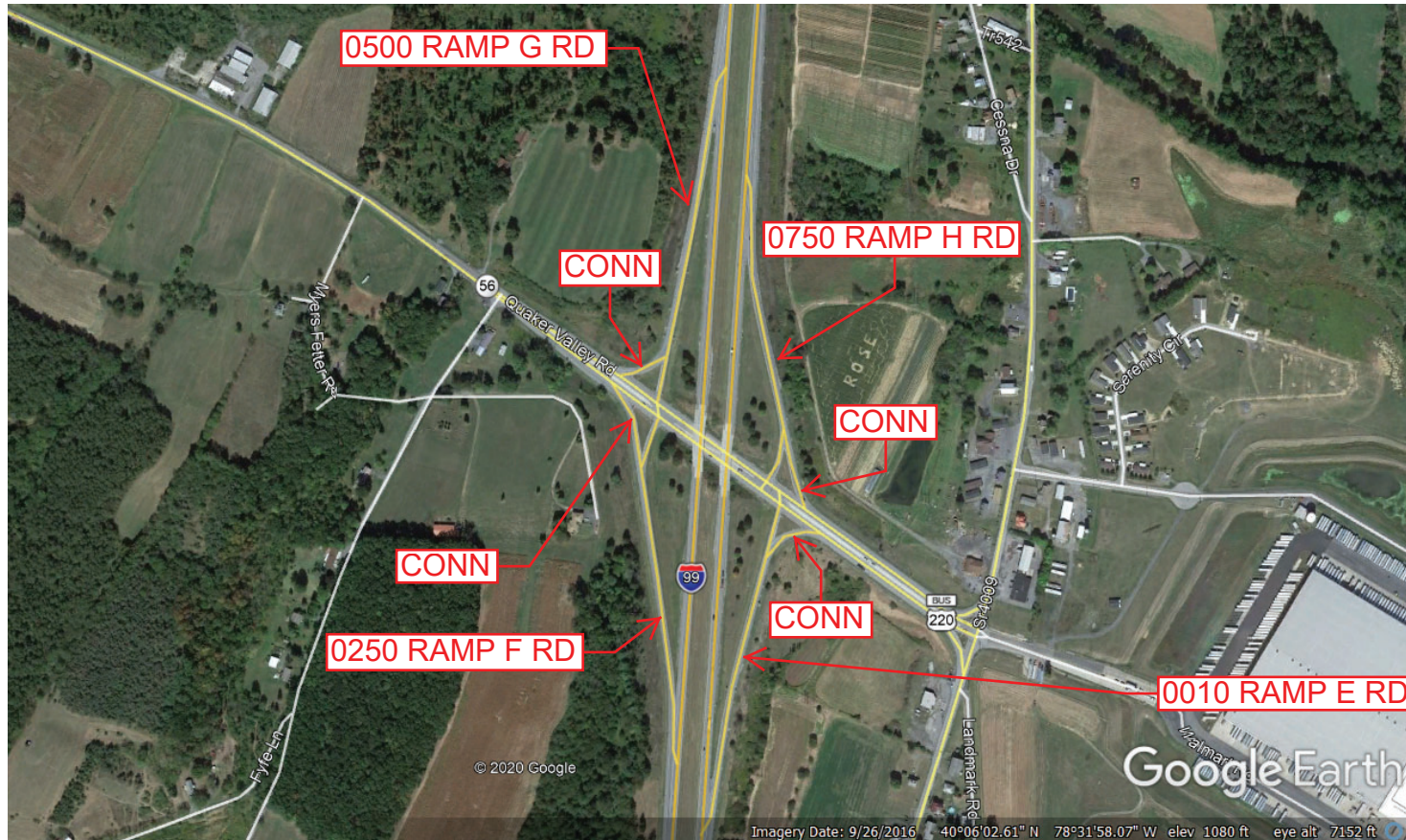
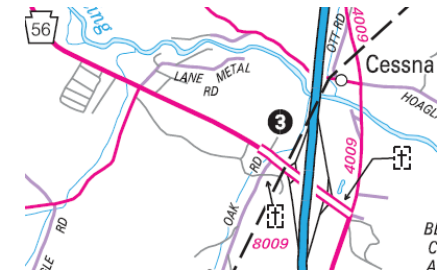
Segment	Length	Segment	Length	Segment	Length	Segment	Length
0010	1127						
0250	1085						
0500	1111						
0750	0888						

Primary Route Interchange Exit Number

3

Secondary Route Interchange Exit Number

PennDOT Type 10 Map View:



Last Date Modified:

May 13, 2020

County: 05

# RMS Interchange Information

Print Form

Interchange Number: 8011

Bureau of Maintenance & Operations  
Roadway Management Division



Interchange Name: OSTERBURG/ST CLAIRSV

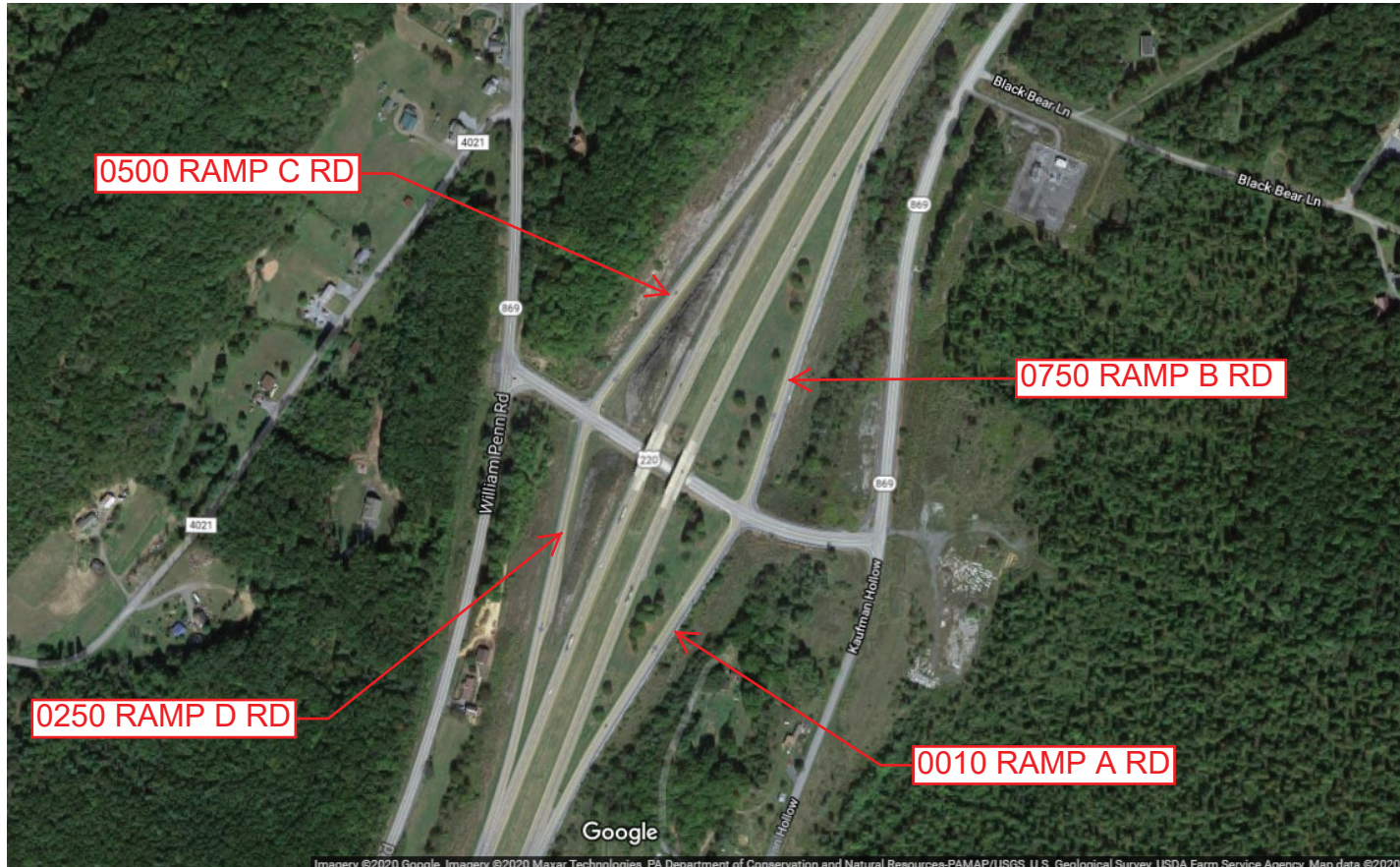
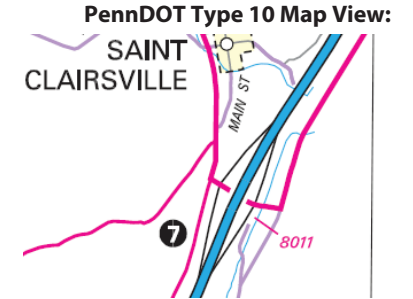
Intersecting SR's: I-99 Bud Shuster Hw & PA 869 Brumbaugh Rd

Ramp Segment Number and Ramp Segment Length Information:

Segment	Length	Segment	Length	Segment	Length	Segment	Length
0010	1154						
0250	1209						
0500	1325						
0750	1378						

Primary Route Interchange Exit Number: 7

Secondary Route Interchange Exit Number:



Last Date Modified: May 13, 2020



County: 05

# RMS Interchange Information

Print Form

Interchange Number: 8013

Bureau of Maintenance & Operations  
Roadway Management Division



Interchange Name: BLUE KNOB - IMLER

Intersecting SR's: I-99 Bud Shuster Hw & SR 4034 Sarah Furnace Rd

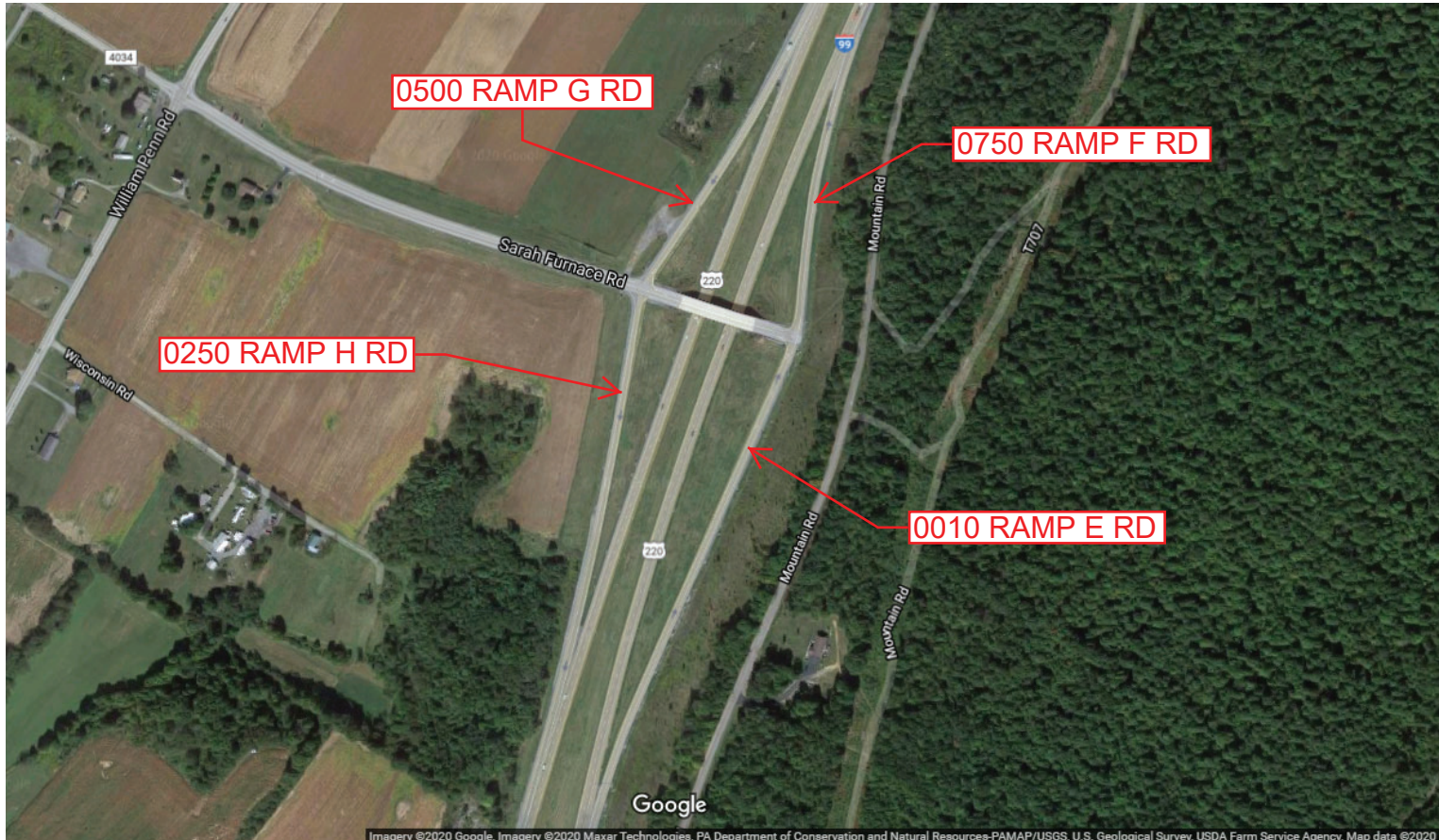
Ramp Segment Number and Ramp Segment Length Information:

Segment	Length	Segment	Length	Segment	Length	Segment	Length
0010	1633						
0250	1102						
0500	0863						
0750	0791						

Primary Route Interchange Exit Number: 10

Secondary Route Interchange Exit Number

PennDOT Type 10 Map View:



Imagery ©2020 Google, Imagery ©2020 Maxar Technologies, PA Department of Conservation and Natural Resources-PAMAP/USGS, U.S. Geological Survey, USDA Farm Service Agency, Map data ©2020

Last Date Modified:

May 13, 2020

County: 05

# RMS Interchange Information

Print Form

Interchange Number: 8014

Bureau of Maintenance & Operations  
Roadway Management Division



Interchange Name: WEST EVERETT

Intersecting SR's: US 30 Lincoln Hw, SR 1029 Earston Rd & SR 1044 Main St

Ramp Segment Number and Ramp Segment Length Information:

Segment	Length	Segment	Length	Segment	Length	Segment	Length
0010	0623						
0250	1292						

Primary Route Interchange Exit Number

Secondary Route Interchange Exit Number

PennDOT Type 10 Map View:



Last Date Modified: May 13, 2020

County: 05

# RMS Interchange Information

Print Form

Interchange Number: 8016

Bureau of Maintenance & Operations  
Roadway Management Division



Interchange Name: PENNWOOD

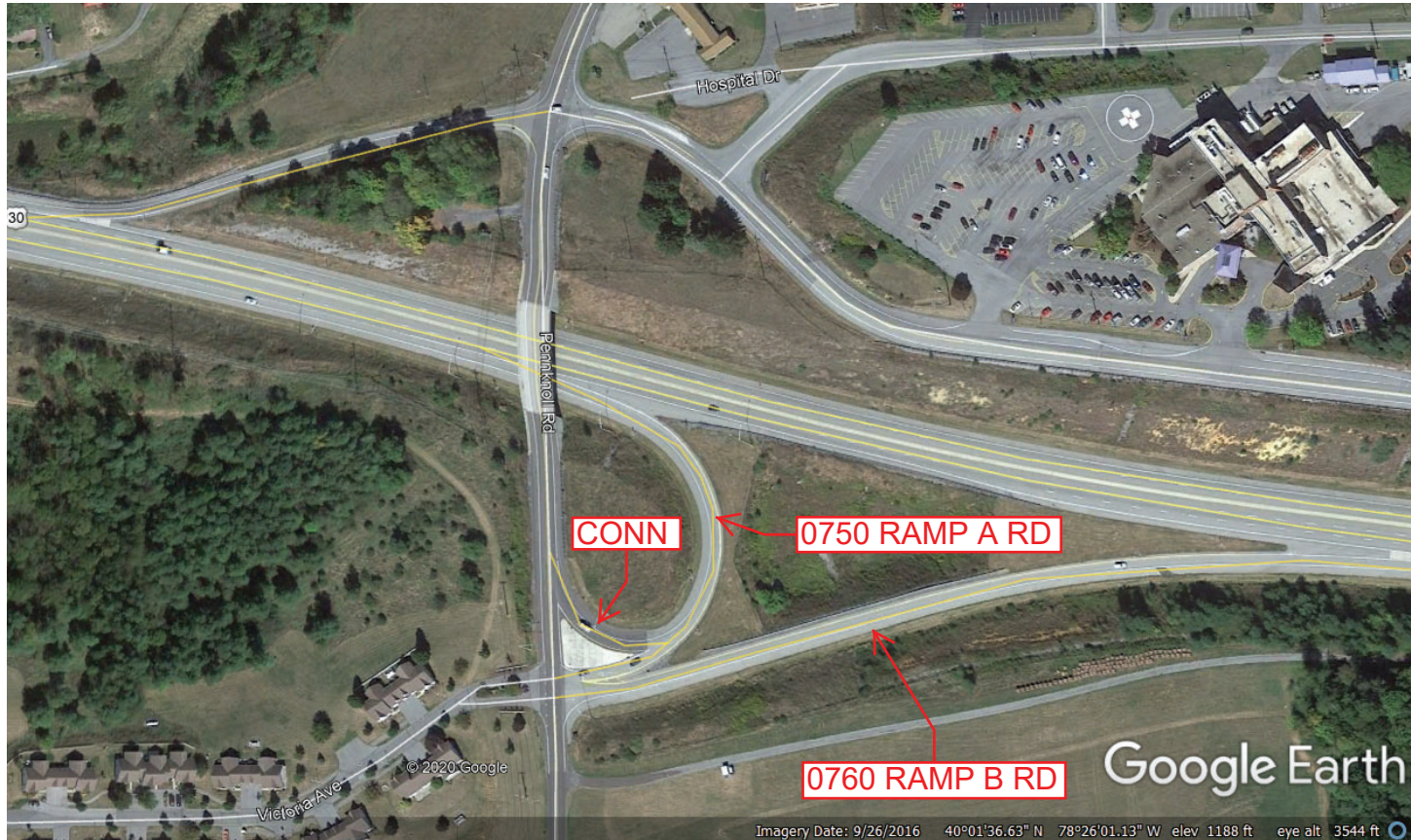
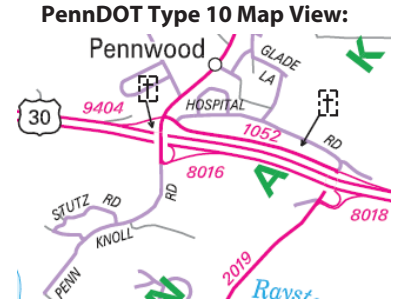
Intersecting SR's: US 30, SR 1003 Pennknoll Rd, Pennknoll Rd & Victoria Av

Ramp Segment Number and Ramp Segment Length Information:

Segment	Length	Segment	Length	Segment	Length	Segment	Length
0750	0527						
0760	1032						

Primary Route Interchange Exit Number

Secondary Route Interchange Exit Number



Last Date Modified: May 13, 2020

County: 05

# RMS Interchange Information

Print Form

Bureau of Maintenance & Operations  
Roadway Management Division



Interchange Number: 8018

Interchange Name: LUTZVILLE RD

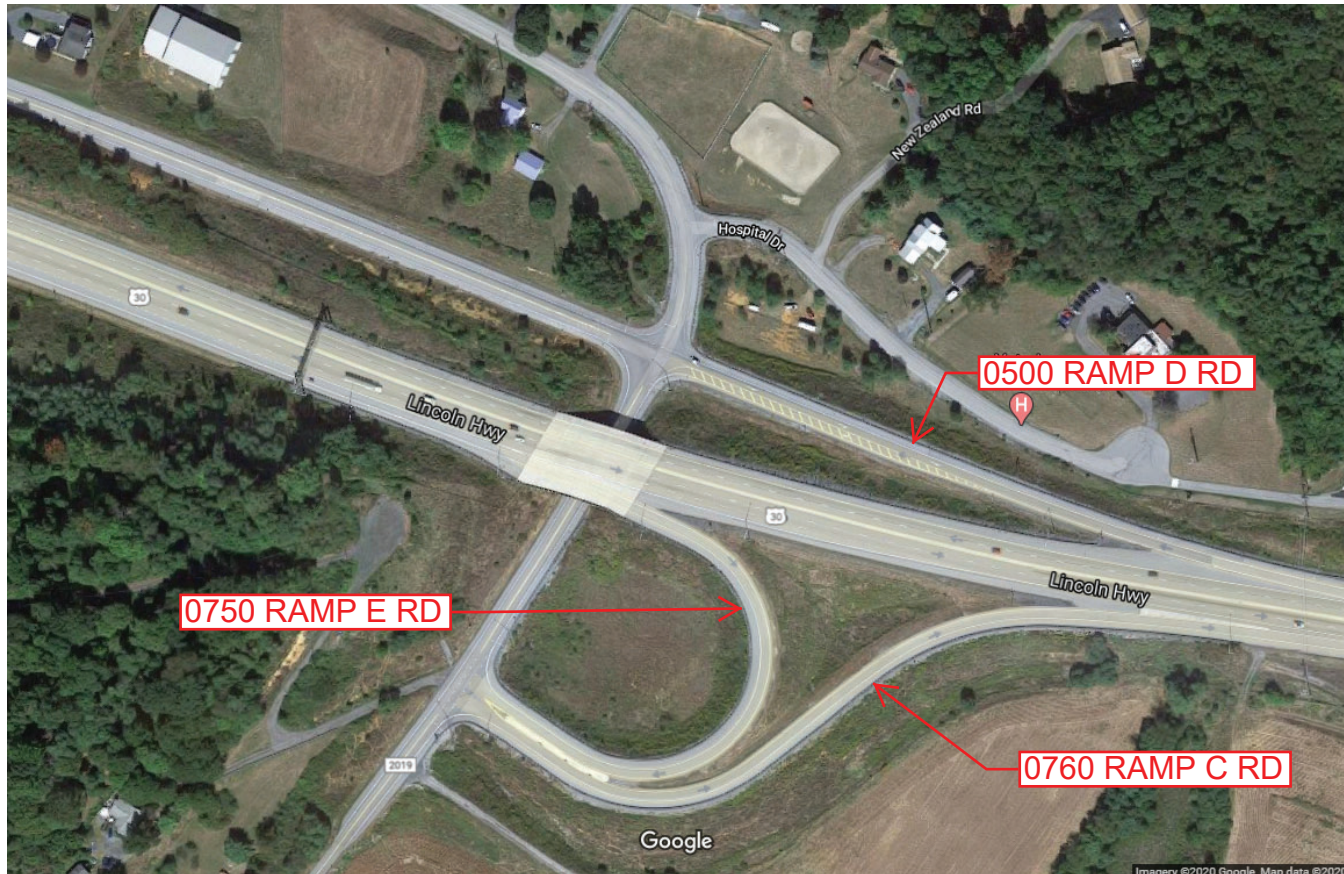
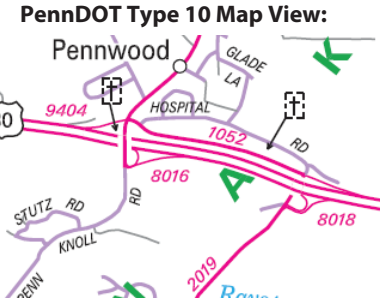
Intersecting SR's: US 30, SR 1052, SR 2019 Lutzville Rd & Hospital Rd

Ramp Segment Number and Ramp Segment Length Information:

Segment	Length	Segment	Length	Segment	Length	Segment	Length
0500	0768						
0750	0865						
0760	1031						

Primary Route Interchange Exit Number

Secondary Route Interchange Exit Number



Last Date Modified:

May 13, 2020

County: 05

# RMS Interchange Information

Print Form

Interchange Number: 9101

Bureau of Maintenance & Operations  
Roadway Management Division



Interchange Name: WEST PROVIDENCE

Intersecting SR's: US 30 Lincoln Hw & SR 1044 Main St

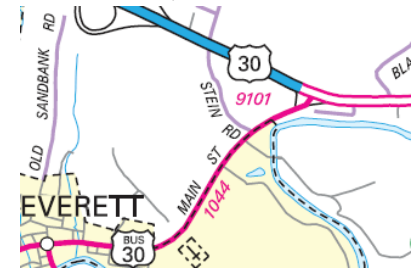
Ramp Segment Number and Ramp Segment Length Information:

Segment	Length	Segment	Length	Segment	Length	Segment	Length
0010	0105						
0750	0275						

Primary Route  
Interchange Exit  
Number

Secondary Route  
Interchange Exit  
Number

PennDOT Type 10 Map View:



Last Date Modified:

May 13, 2020

County: 05

# RMS Interchange Information

Print Form

Interchange Number: 9102

Bureau of Maintenance & Operations  
Roadway Management Division



Interchange Name: BREEZEWOOD

Intersecting SR's: I-70 Dwight D Eisenhower Hw & US 30 Lincoln Hw

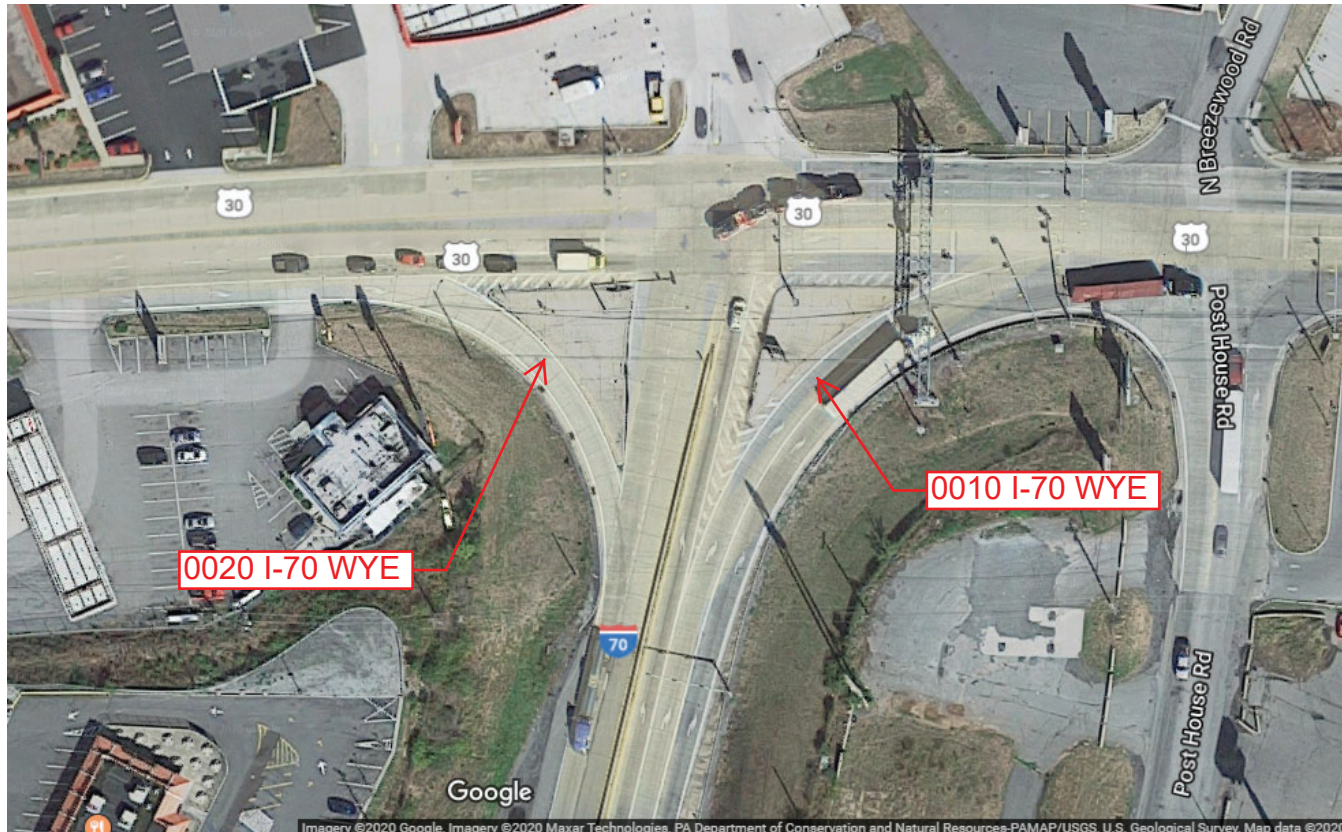
Ramp Segment Number and Ramp Segment Length Information:

Segment	Length	Segment	Length	Segment	Length	Segment	Length
0010	0110						
0020	0115						

Primary Route Interchange Exit Number: 147

Secondary Route Interchange Exit Number

PennDOT Type 10 Map View:



County: **05**

# RMS Interchange Information

Print Form

Interchange Number: **9103**

Bureau of Maintenance & Operations  
Asset Management Division



Interchange Name: **WYE ROAD**

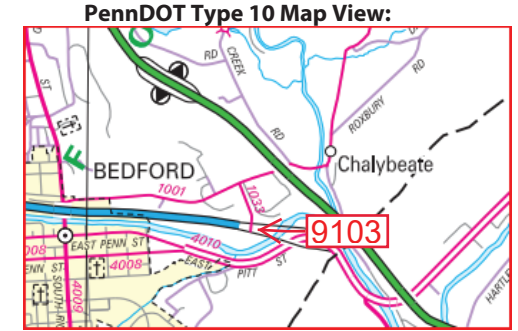
Intersecting SR's: **US 30 Lincoln Hw & SR 1033 Sunnyside Ex**

Ramp Segment Number and Ramp Segment Length Information:

Segment	Length	Segment	Length	Segment	Length	Segment	Length
<b>0010</b>	<b>0342</b>						

Primary Route Interchange Exit Number

Secondary Route Interchange Exit Number



Privacy Choices Consumer Health Privacy

Last Date Modified: **Feb 19, 2025**

County: **05**

# RMS Interchange Information

Print Form

Interchange Number: **9104**

Bureau of Maintenance & Operations  
Asset Management Division



Interchange Name: **WYE ROAD**

Intersecting SR's: **US 30 Lincoln Hw & SR 1033 Sunnyside Ex**

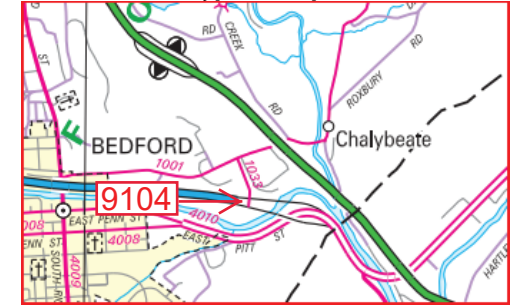
Ramp Segment Number and Ramp Segment Length Information:

Segment	Length	Segment	Length	Segment	Length	Segment	Length
<b>0010</b>	<b>0296</b>						

Primary Route Interchange Exit Number

Secondary Route Interchange Exit Number

PennDOT Type 10 Map View:





County: 05

# RMS Interchange Information

Print Form

Interchange Number: 9404

Bureau of Maintenance & Operations  
Roadway Management Division



Interchange Name:

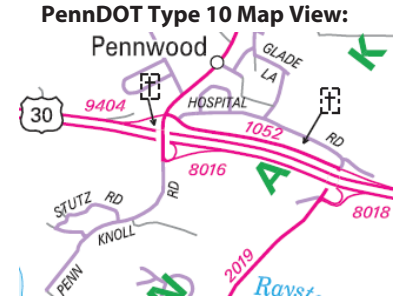
Intersecting SR's: US 30, SR 1052 & SR 1003 Upper Snake Spring Rd

Ramp Segment Number and Ramp Segment Length Information:

Segment	Length	Segment	Length	Segment	Length	Segment	Length
0010	0605						

Primary Route Interchange Exit Number

Secondary Route Interchange Exit Number



Last Date Modified:

May 13, 2020