

County: 07

RMS Interchange Information

Print Form

Interchange Number: 8001

Bureau of Maintenance & Operations
Roadway Management Division



Interchange Name: CATFISH

Intersecting SR's: PA 36 Catfish Ridge Rd, SR 2014 Loop Rd

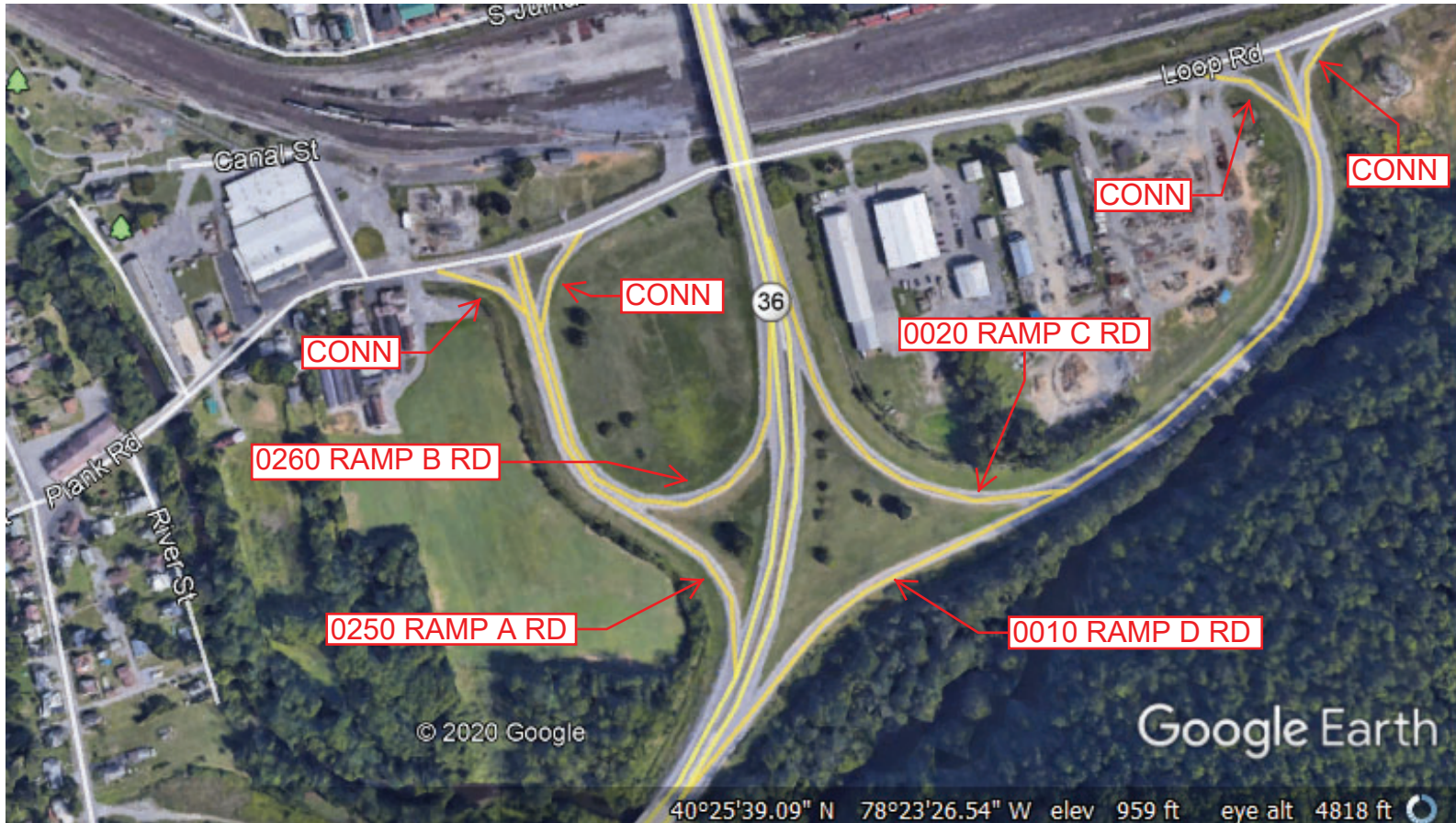
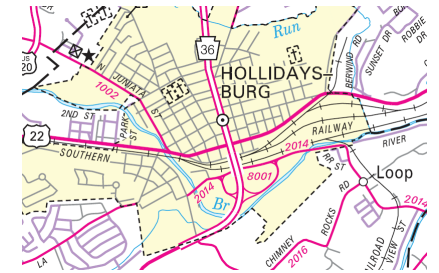
Ramp Segment Number and Ramp Segment Length Information:

Segment	Length	Segment	Length	Segment	Length	Segment	Length
0010	2185						
0020	1996						
0250	1068						
0260	1010						

Primary Route Interchange Exit Number

Secondary Route Interchange Exit Number

PennDOT Type 10 Map View:



County: 07

RMS Interchange Information

Print Form

Interchange Number: 8003

Bureau of Maintenance & Operations
Roadway Management Division



Interchange Name: GRAZIERVILLE

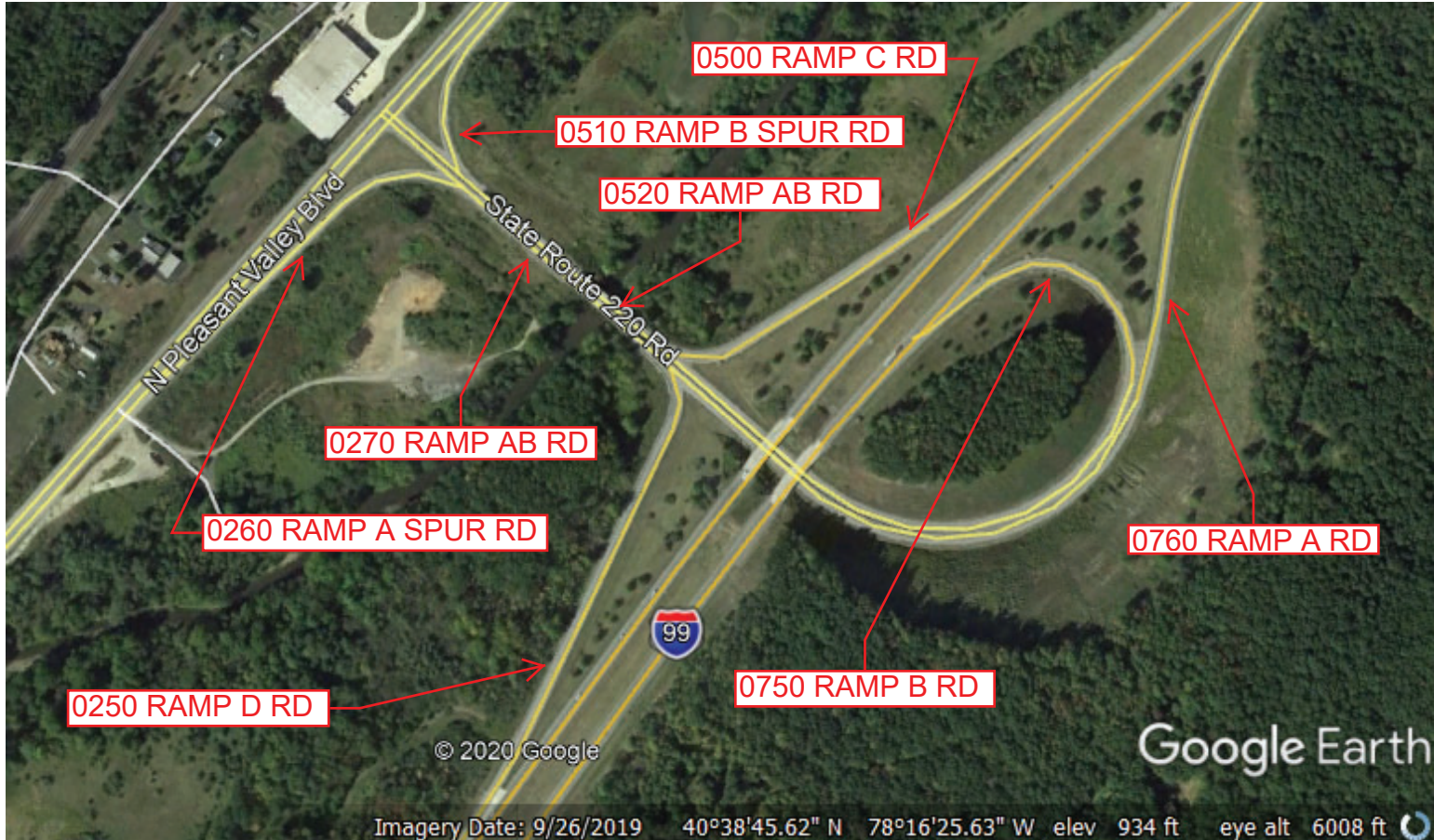
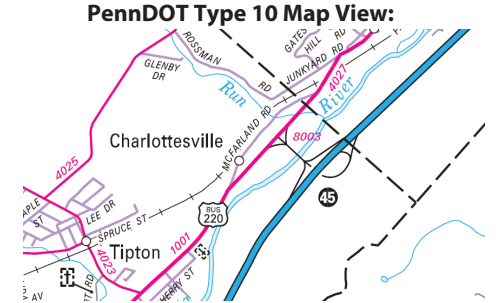
Intersecting SR's: I-99, SR 1001 Old US 220, SR 4027 Old US 220

Ramp Segment Number and Ramp Segment Length Information:

Segment	Length	Segment	Length	Segment	Length	Segment	Length
0250	1245	0520	1514				
0260	0756	0750	2067				
0270	1507	0760	2688				
0500	1283						
0510	0291						

Primary Route Interchange Exit Number: 45

Secondary Route Interchange Exit Number



Imagery Date: 9/26/2019 40°38'45.62" N 78°16'25.63" W elev 934 ft eye alt 6008 ft

Last Date Modified:

Apr 24, 2020

County: 07

RMS Interchange Information

Print Form

Interchange Number: 8004

Bureau of Maintenance & Operations
Roadway Management Division



Interchange Name: CROSS KEYS

Intersecting SR's: I-99, US 22 William Penn Hw, PA 764 Sixth Av Rd

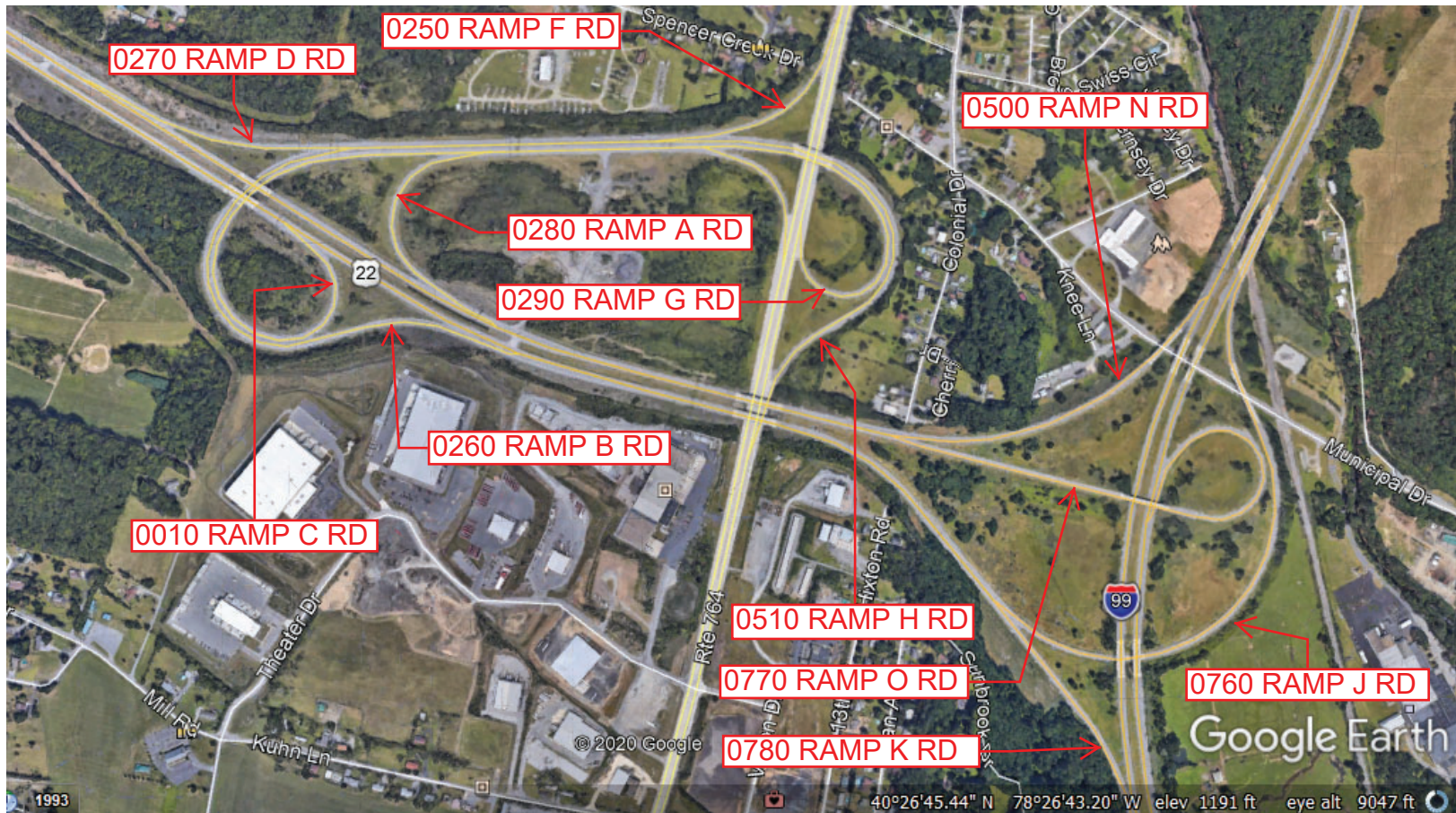
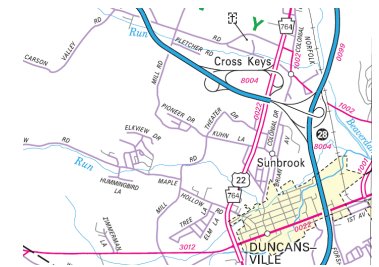
Ramp Segment Number and Ramp Segment Length Information:

Segment	Length	Segment	Length	Segment	Length	Segment	Length
0010	2863	0290	2019	0780	2915		
0250	3000	0500	2542				
0260	2483	0510	2280				
0270	0766	0760	3165				
0280	2960	0770	2998				

Primary Route Interchange Exit Number: 28

Secondary Route Interchange Exit Number

PennDOT Type 10 Map View:



Last Date Modified: May 13, 2020

County: 07

RMS Interchange Information

Print Form

Interchange Number: 8005

Bureau of Maintenance & Operations
Asset Management Division



Interchange Name: TYRONE INT

Intersecting SR's: I-99, PA 453 Eleventh ST & SR 1012 Tenth St

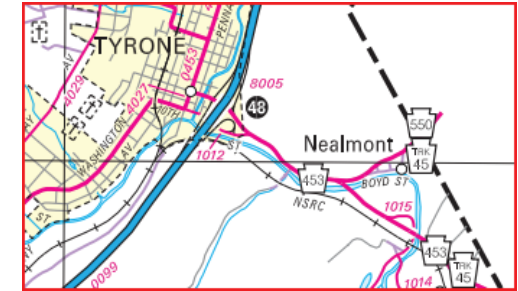
Ramp Segment Number and Ramp Segment Length Information:

Segment	Length	Segment	Length	Segment	Length	Segment	Length
0010	1673						
0250	1341						
0500	1190						
0750	1030						

Primary Route Interchange Exit Number: 48

Secondary Route Interchange Exit Number

PennDOT Type 10 Map View:



Privacy Choices Consumer Health Privacy

© 2024 TomTom, © OpenStreetMap, © Vexcel Imaging

© 2025 Microsoft

Last Date Modified:

Jan 15, 2025

County: 07

RMS Interchange Information

Print Form

Interchange Number: 8006

Bureau of Maintenance & Operations
Roadway Management Division



Interchange Name: 10TH AV EXPY-17TH ST

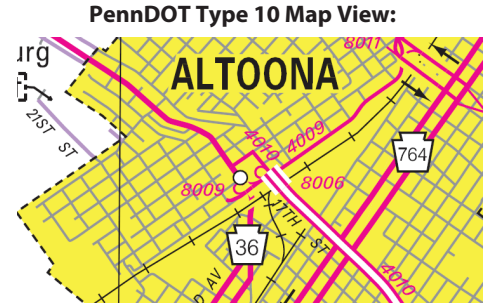
Intersecting SR's: SR 4010 Seventeenth St, SR 4009 Tenth Av Ex

Ramp Segment Number and Ramp Segment Length Information:

Segment	Length	Segment	Length	Segment	Length	Segment	Length
0750	0375						

Primary Route Interchange Exit Number

Secondary Route Interchange Exit Number



Last Date Modified: May 14, 2020

County: 07

RMS Interchange Information

Print Form

Interchange Number: 8007

Bureau of Maintenance & Operations
Asset Management Division



Interchange Name: BALD EAGLE INT

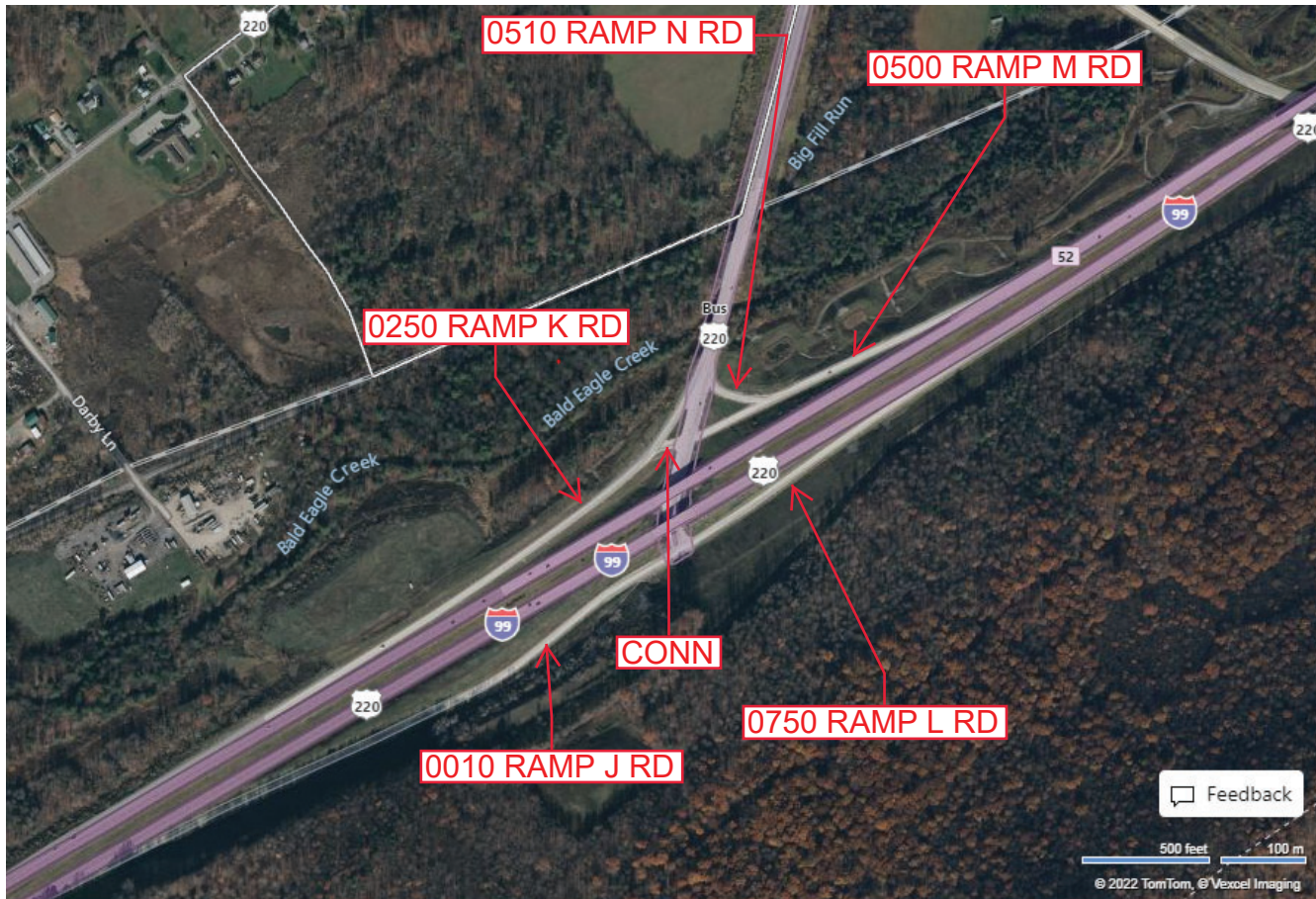
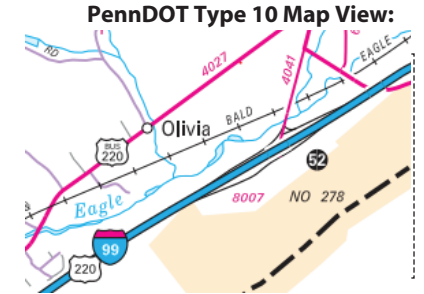
Intersecting SR's: I-99 Bud Shuster Hw & SR 4041 SH

Ramp Segment Number and Ramp Segment Length Information:

Segment	Length	Segment	Length	Segment	Length	Segment	Length
0010	2579						
0250	2188						
0500	1266						
0510	0220						
0750	0974						

Primary Route Interchange Exit Number: 52

Secondary Route Interchange Exit Number



Feedback

500 feet 100 m

© 2022 TomTom, © Vexcel Imaging

© 2022 Microsoft

Last Date Modified:

Sep 6, 2022

County: 07

RMS Interchange Information

Print Form

Interchange Number: 8009

Bureau of Maintenance & Operations
Roadway Management Division



Interchange Name: 10TH AV EXPY/UNION

Intersecting SR's: PA 36 Eighteenth St, SR 4009 Tenth Av Ex

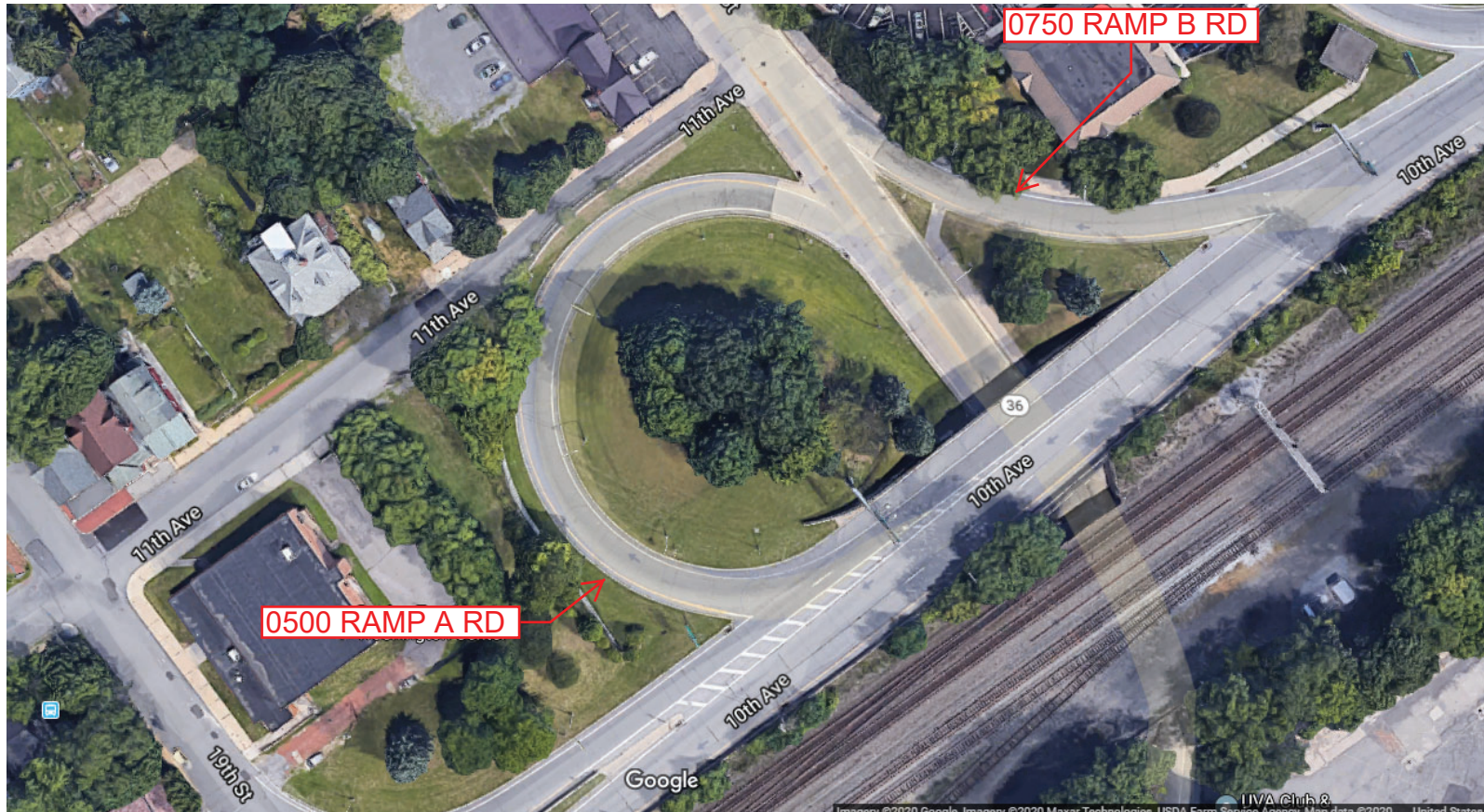
Ramp Segment Number and Ramp Segment Length Information:

Segment	Length	Segment	Length	Segment	Length	Segment	Length
0500	0375						
0750	0187						

Primary Route Interchange Exit Number

Secondary Route Interchange Exit Number

PennDOT Type 10 Map View:



Last Date Modified:

May 14, 2020

County: 07

RMS Interchange Information

Print Form

Interchange Number: 8011

Bureau of Maintenance & Operations
Roadway Management Division



Interchange Name: 7TH/8TH ST BRIDGES

Intersecting SR's: SR 4009 Tenth Av Ex, SR 4013 7th St/8th St & Chestnut Av

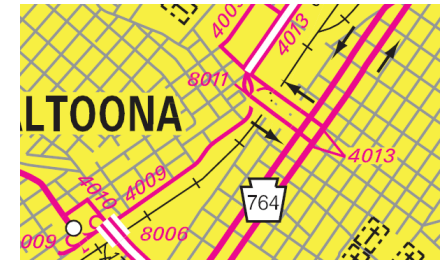
Ramp Segment Number and Ramp Segment Length Information:

Segment	Length	Segment	Length	Segment	Length	Segment	Length
0250	0284						
0500	0216						

Primary Route Interchange Exit Number

Secondary Route Interchange Exit Number

PennDOT Type 10 Map View:



Imagery ©2020 Google, Imagery ©2020 Maxar Technologies, PA Department of Conservation and Natural Resources-PAMAP/USGS, USDA Farm Service Agency, Map data ©2020

Last Date Modified: May 14, 2020

County: 07

RMS Interchange Information

Print Form

Bureau of Maintenance & Operations
Asset Management Division



Interchange Number: 8015

Interchange Name: PLANK ROAD INT

Intersecting SR's: I-99 Bud Shuster Hw & SR 1001 Plank Rd

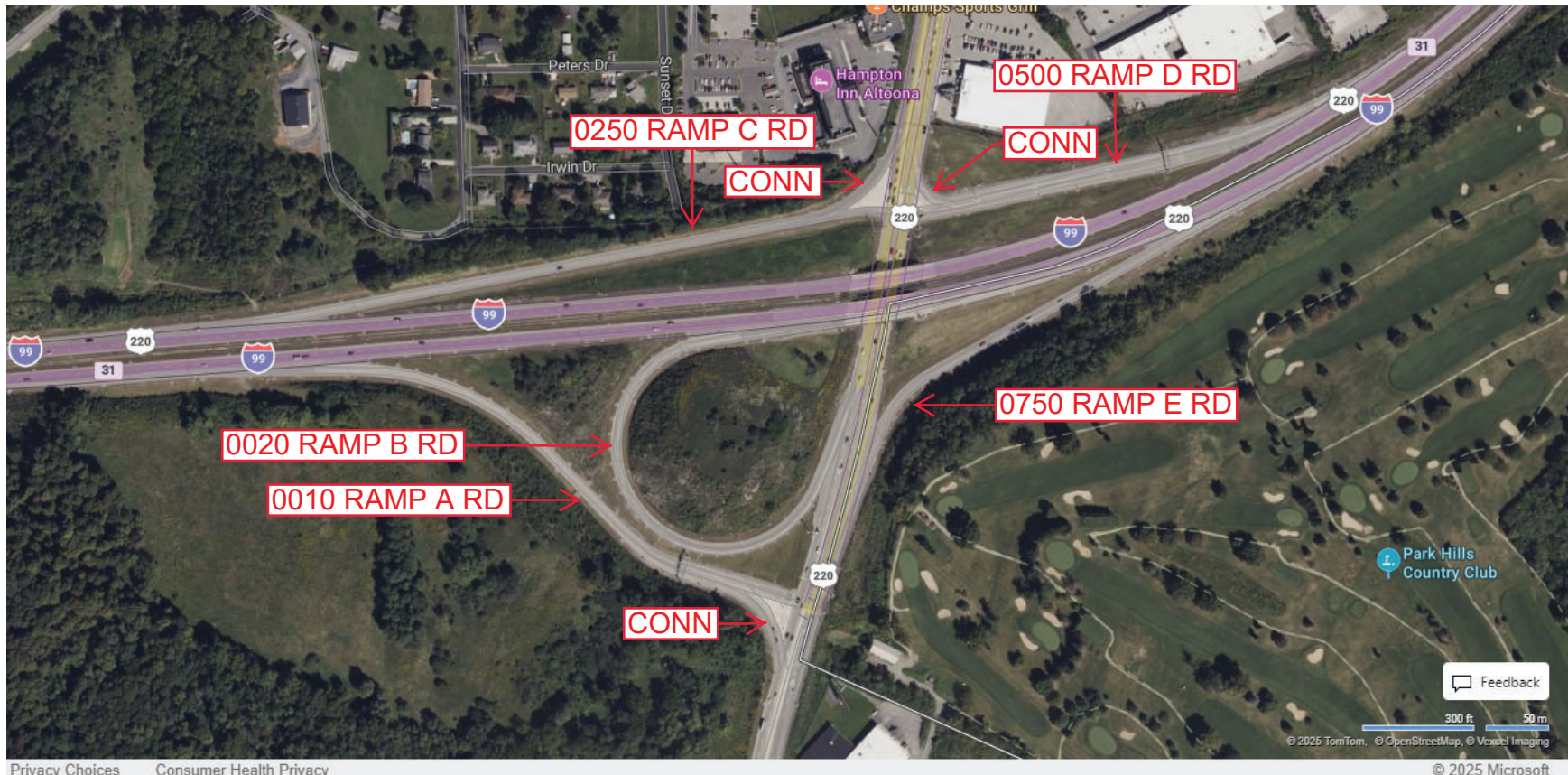
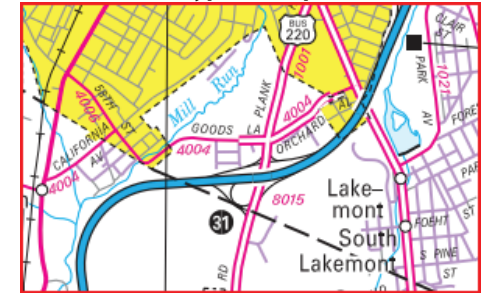
Ramp Segment Number and Ramp Segment Length Information:

Segment	Length	Segment	Length	Segment	Length	Segment	Length
0010	1427						
0020	1225						
0250	1546						
0500	1015						
0750	0875						

Primary Route Interchange Exit Number: 31

Secondary Route Interchange Exit Number

PennDOT Type 10 Map View:



Last Date Modified:

Jan 30, 2025

County: 07

RMS Interchange Information

Print Form

Bureau of Maintenance & Operations
Roadway Management Division



Interchange Number: 8017

Interchange Name: FRANKSTOWN ROAD

Intersecting SR's: I-99, SR 1009 Frankstown Rd, SR 1021 Park Av & Fairway Dr

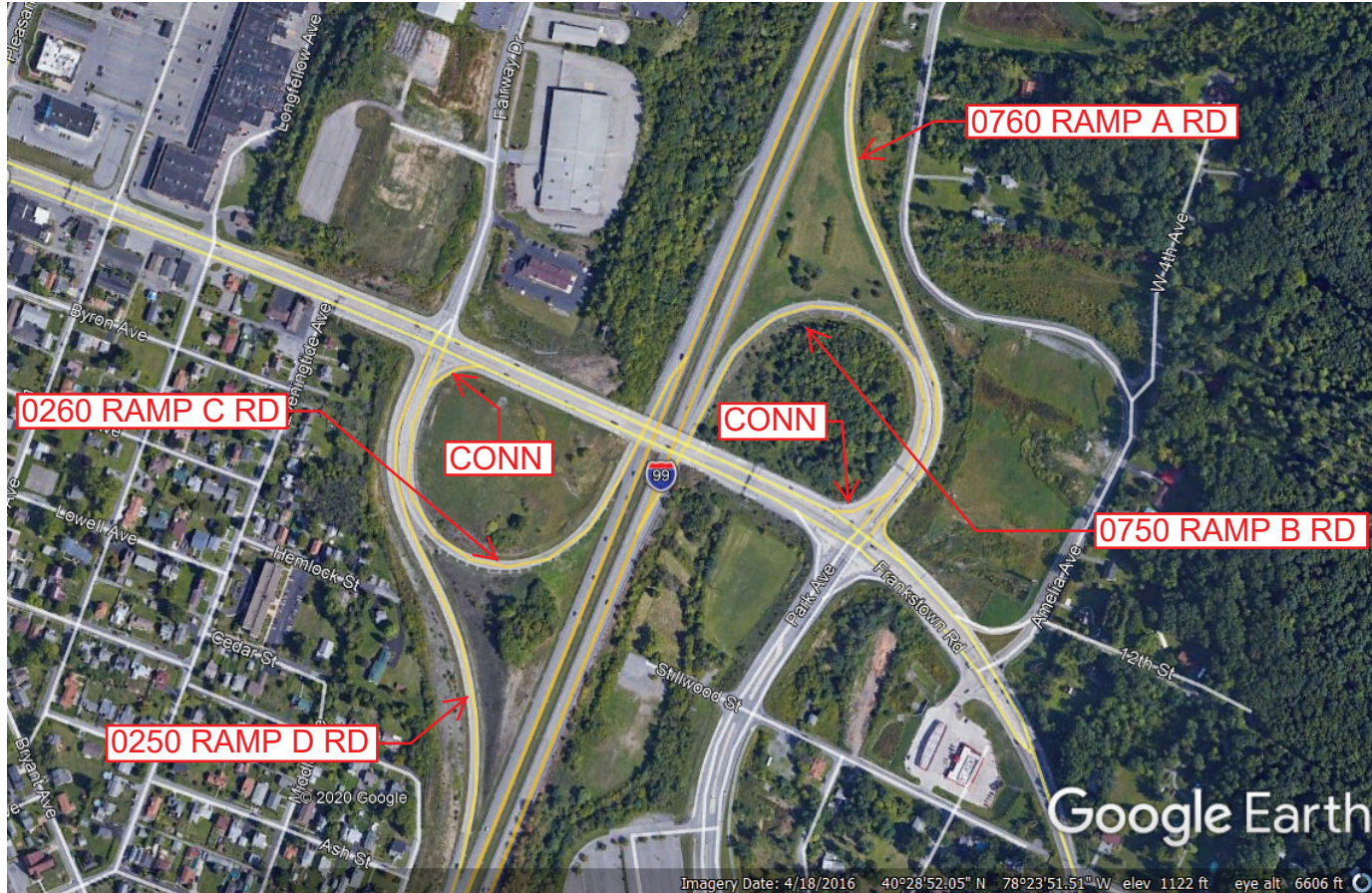
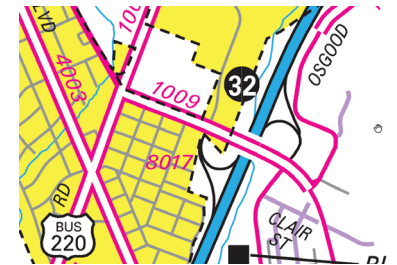
Ramp Segment Number and Ramp Segment Length Information:

Segment	Length	Segment	Length	Segment	Length	Segment	Length
0250	1722						
0260	1390						
0750	1430						
0760	1688						

Primary Route Interchange Exit Number: 32

Secondary Route Interchange Exit Number

PennDOT Type 10 Map View:



Last Date Modified:

May 15, 2020

County: 07

RMS Interchange Information

Print Form

Bureau of Maintenance & Operations
Roadway Management Division



Interchange Number: 8019

Interchange Name: SEVENTEENTH STREET

Intersecting SR's: I-99, SR 1021 Osgood Dr & SR 4010 Seventeenth St

Ramp Segment Number and Ramp Segment Length Information:

Segment	Length	Segment	Length	Segment	Length	Segment	Length
0250	0920	0760	2547				
0260	0260	0770	0329				
0500	0615						
0510	0200						
0750	2310						

Primary Route Interchange Exit Number: 33

Secondary Route Interchange Exit Number

PennDOT Type 10 Map View:



Google Earth

Imagery Date: 4/18/2016 40°29'53.08" N 78°22'34.73" W elev 1370 ft eye alt 5761 ft

Last Date Modified:

May 15, 2020

County: 07

RMS Interchange Information

Print Form

Interchange Number: 8021

Bureau of Maintenance & Operations
Roadway Management Division



Interchange Name: PINECROFT

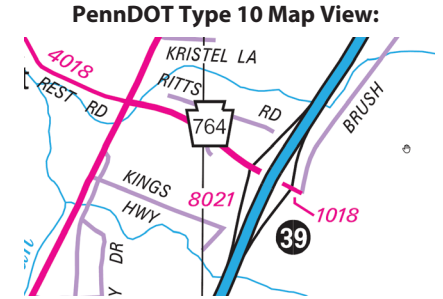
Intersecting SR's: I-99 Bud Shuster Hw & PA 0764 SH & SR 1018 SH

Ramp Segment Number and Ramp Segment Length Information:

Segment	Length	Segment	Length	Segment	Length	Segment	Length
0010	1181						
0250	1322						
0500	1013						
0750	0862						

Primary Route Interchange Exit Number: 39

Secondary Route Interchange Exit Number:



Last Date Modified: May 15, 2020

County: 07

RMS Interchange Information

Print Form

Interchange Number: 8023

Bureau of Maintenance & Operations
Roadway Management Division



Interchange Name: BELLWOOD

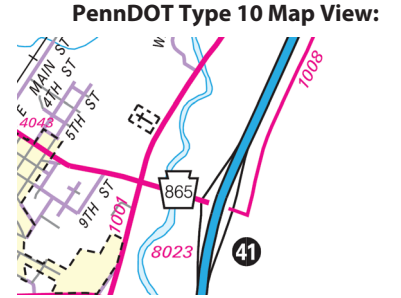
Intersecting SR's: I-99, PA 865 Skelp Mtn Rd & SR 1008 Skelp Mtn Rd

Ramp Segment Number and Ramp Segment Length Information:

Segment	Length	Segment	Length	Segment	Length	Segment	Length
0010	1541						
0250	1850						
0500	1435						
0750	1296						

Primary Route Interchange Exit Number: 41

Secondary Route Interchange Exit Number:



Last Date Modified: May 4, 2020

County: 07

RMS Interchange Information

Print Form

Interchange Number: 8025

Bureau of Maintenance & Operations
Roadway Management Division



Interchange Name: LEAMERSVILLE

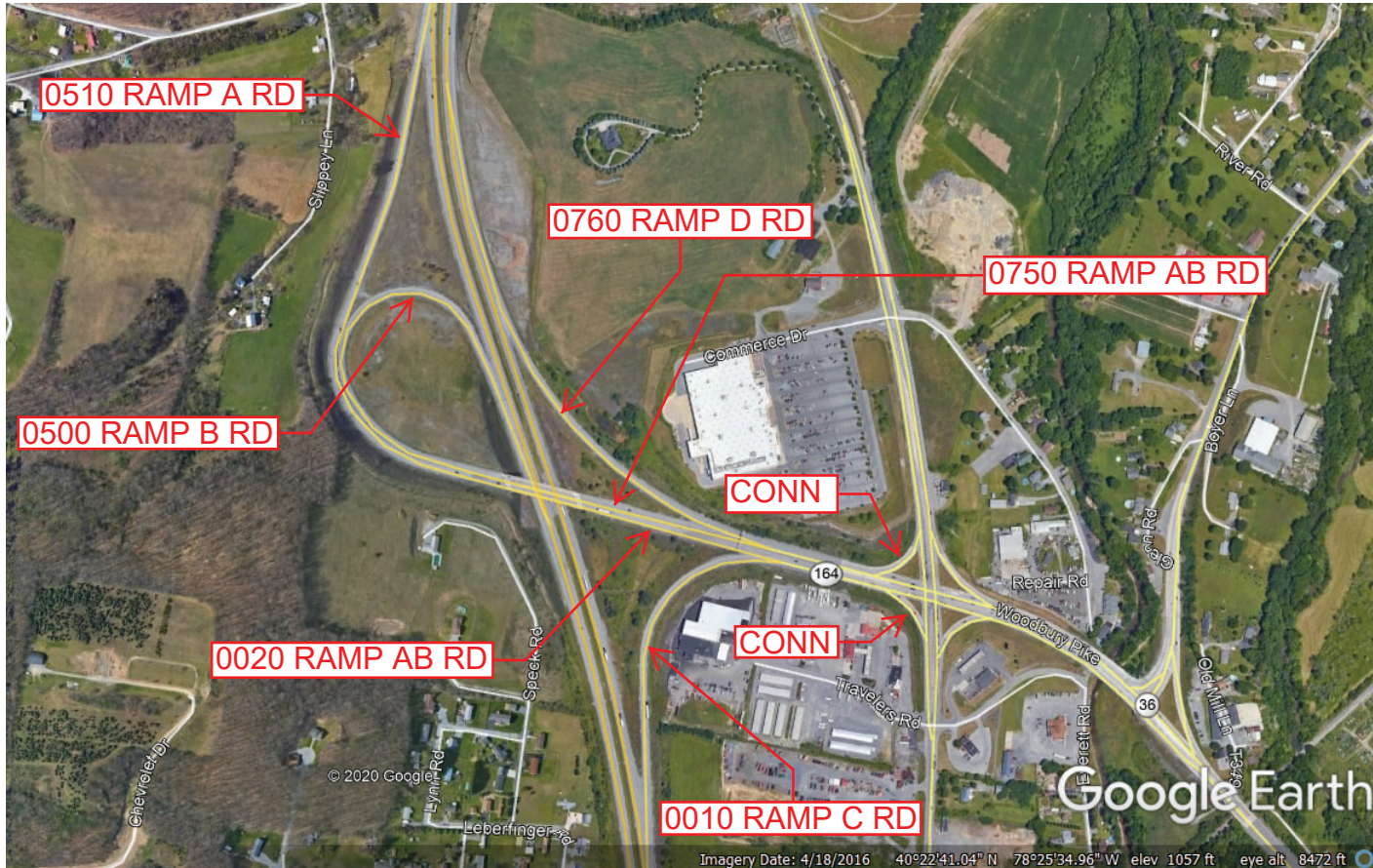
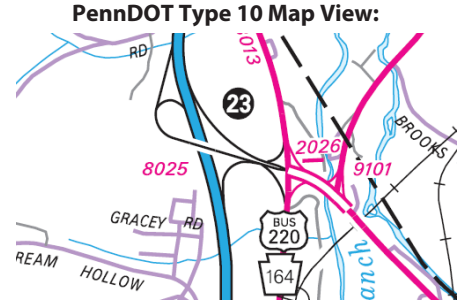
Intersecting SR's: I-99, PA 164 Woodbury Pk & SR 3013 Dunnings Hw

Ramp Segment Number and Ramp Segment Length Information:

Segment	Length	Segment	Length	Segment	Length	Segment	Length
0010	1263	0760	1170				
0020	1535						
0500	2175						
0510	2675						
0750	1564						

Primary Route Interchange Exit Number: 23

Secondary Route Interchange Exit Number



Last Date Modified: May 15, 2020

County: 07

RMS Interchange Information

Print Form

Interchange Number: 8027

Bureau of Maintenance & Operations
Roadway Management Division



Interchange Name: SPROUL

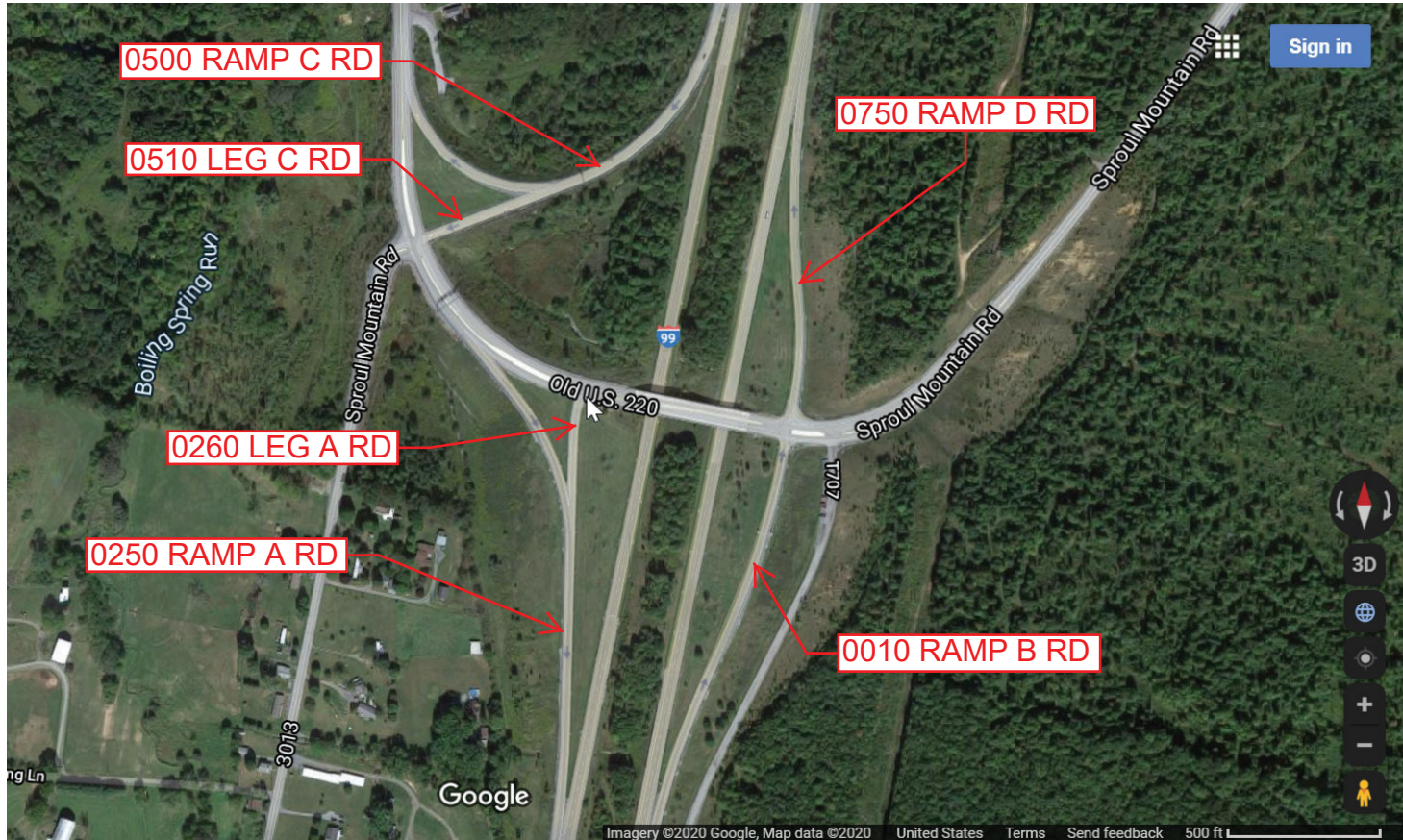
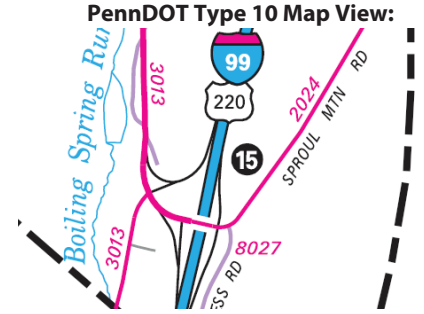
Intersecting SR's: I-99, SR 2024 Sproul Mt Rd & SR 3013 Dunnings Hw

Ramp Segment Number and Ramp Segment Length Information:

Segment	Length	Segment	Length	Segment	Length	Segment	Length
0010	1262	0750	0976				
0250	1462						
0260	0288						
0500	1507						
0510	0336						

Primary Route Interchange Exit Number: 15

Secondary Route Interchange Exit Number



Last Date Modified: May 4, 2020

County: 07

RMS Interchange Information

Bureau of Maintenance & Operations
Asset Management Division

Print Form



Interchange Number: 9101

Interchange Name: PA 36 WYE

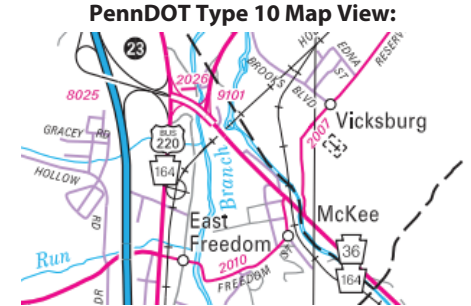
Intersecting SR's: PA 36 Catfish Ridge Rd & PA 164 Woodbury Pk

Ramp Segment Number and Ramp Segment Length Information:

Segment	Length	Segment	Length	Segment	Length	Segment	Length
0010	0306						

Primary Route Interchange Exit Number

Secondary Route Interchange Exit Number



Last Date Modified: Jan 7, 2025