

County: 29

# RMS Interchange Information

Print Form

Interchange Number: 8004

Bureau of Maintenance & Operations  
Roadway Management Division



Interchange Name: WARFORDSBURG

Intersecting SR's: I - 70, US 522 Great Cove Rd & SR 3019 Great Cove Rd

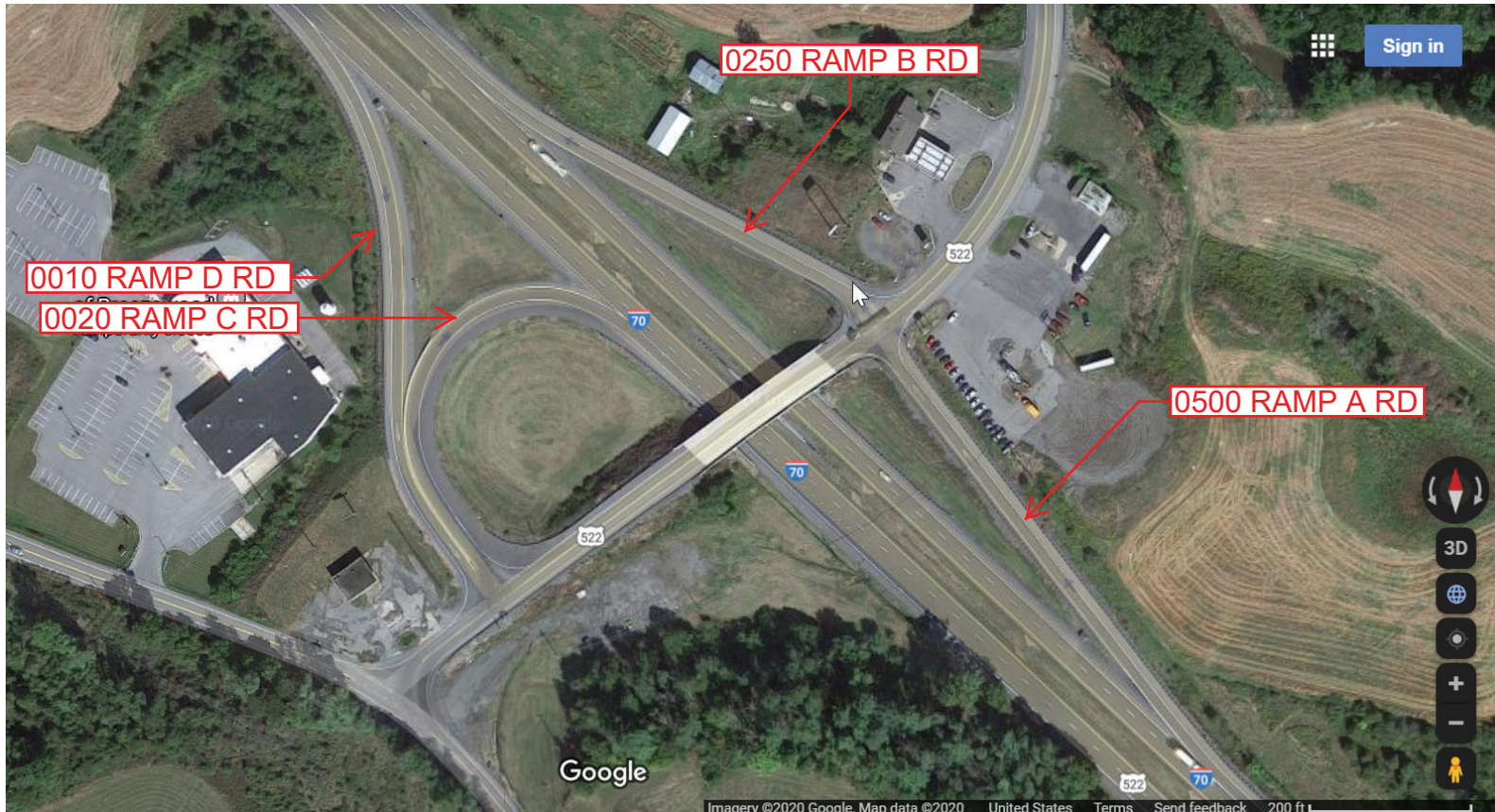
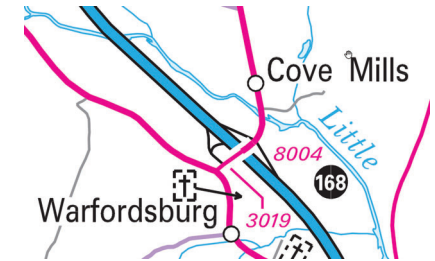
Ramp Segment Number and Ramp Segment Length Information:

Segment	Length	Segment	Length	Segment	Length	Segment	Length
0010	0660						
0020	0523						
0250	0438						
0500	0560						

Primary Route Interchange Exit Number: 168

Secondary Route Interchange Exit Number

PennDOT Type 10 Map View:



Last Date Modified:

May 8, 2020

County: 29

# RMS Interchange Information

Print Form

Interchange Number: 8006

Bureau of Maintenance & Operations  
Roadway Management Division



Interchange Name: AMARANTH

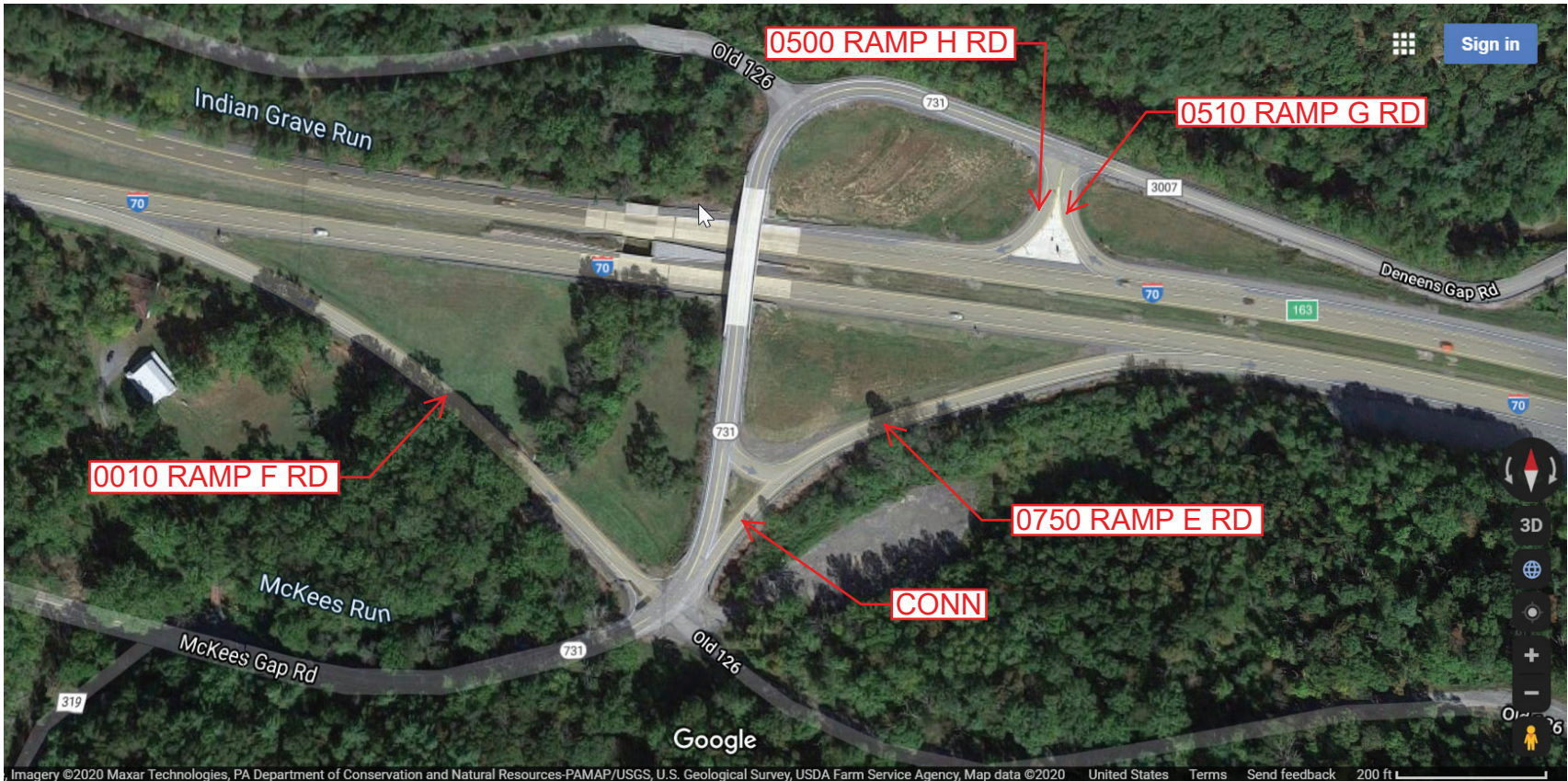
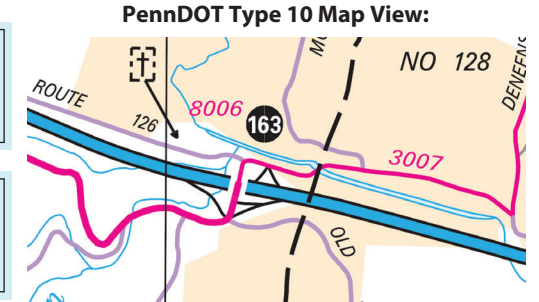
Intersecting SR's: I-70, PA 731, SR 3007 Deneens Gap Rd & Old Route 126 Rd

Ramp Segment Number and Ramp Segment Length Information:

Segment	Length	Segment	Length	Segment	Length	Segment	Length
0010	0840						
0500	0146						
0510	0152						
0750	0520						

Primary Route Interchange Exit Number: 163

Secondary Route Interchange Exit Number



Last Date Modified: May 8, 2020

County: 29

# RMS Interchange Information

Print Form

Interchange Number: 8008

Bureau of Maintenance & Operations  
Roadway Management Division



Interchange Name: TOWN HILL

Intersecting SR's: I-70, SR 643 Old 126 Rd & SR 3017 Old 126 Rd

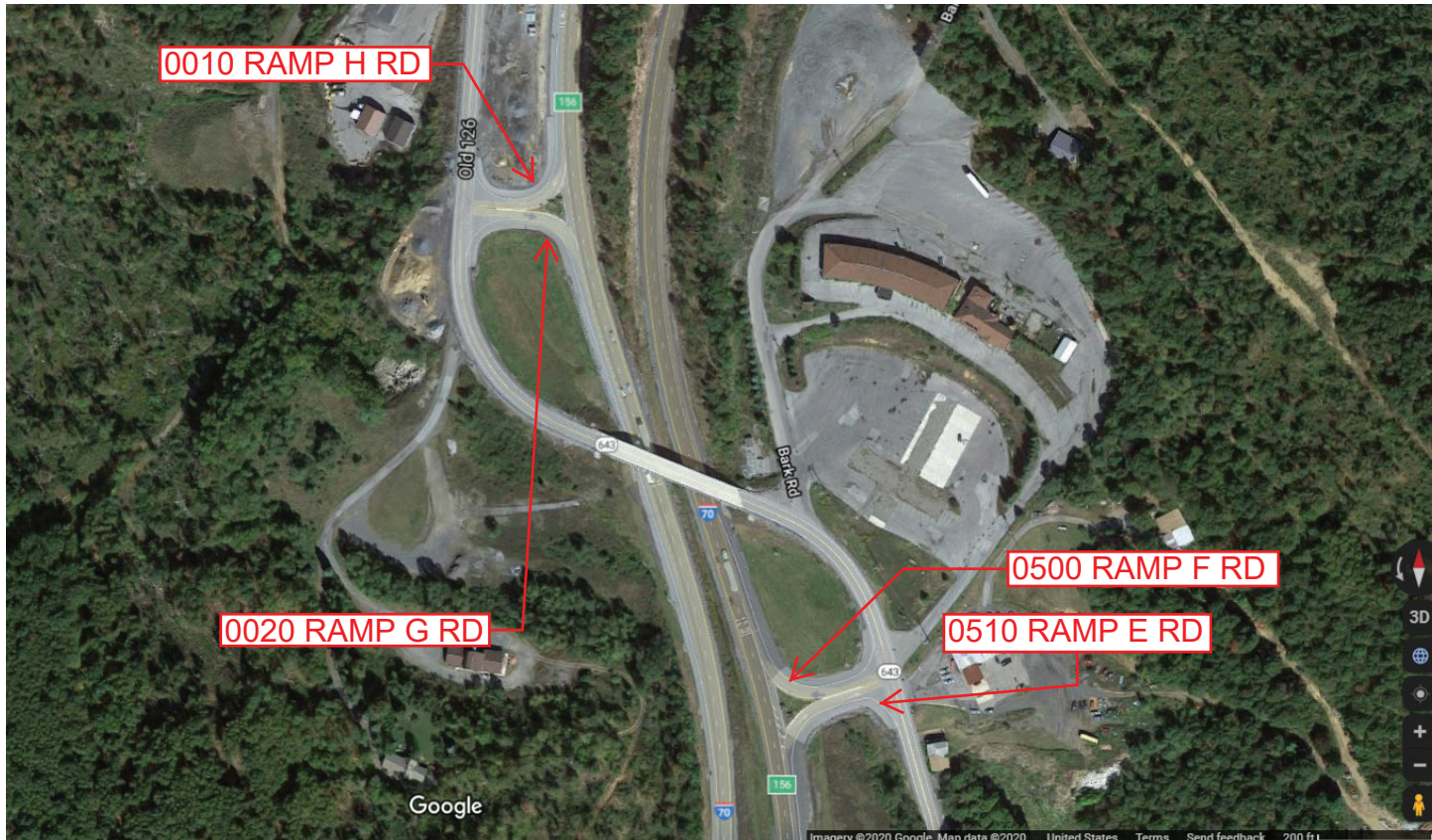
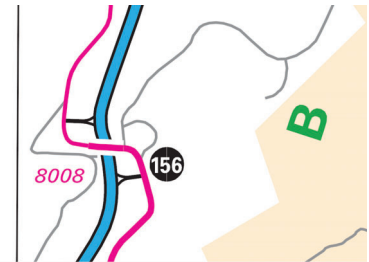
Ramp Segment Number and Ramp Segment Length Information:

Segment	Length	Segment	Length	Segment	Length	Segment	Length
0010	0187						
0020	0187						
0500	0193						
0510	0205						

Primary Route Interchange Exit Number: 156

Secondary Route Interchange Exit Number

PennDOT Type 10 Map View:



Last Date Modified: May 8, 2020

County: 29

# RMS Interchange Information

Print Form

Interchange Number: 8014

Bureau of Maintenance & Operations  
Roadway Management Division



Interchange Name: CRYSTAL SPRINGS

Intersecting SR's: I-70, PA 915, SR 3017 Old 126 & SR 4008 Pleasant Valley Rd

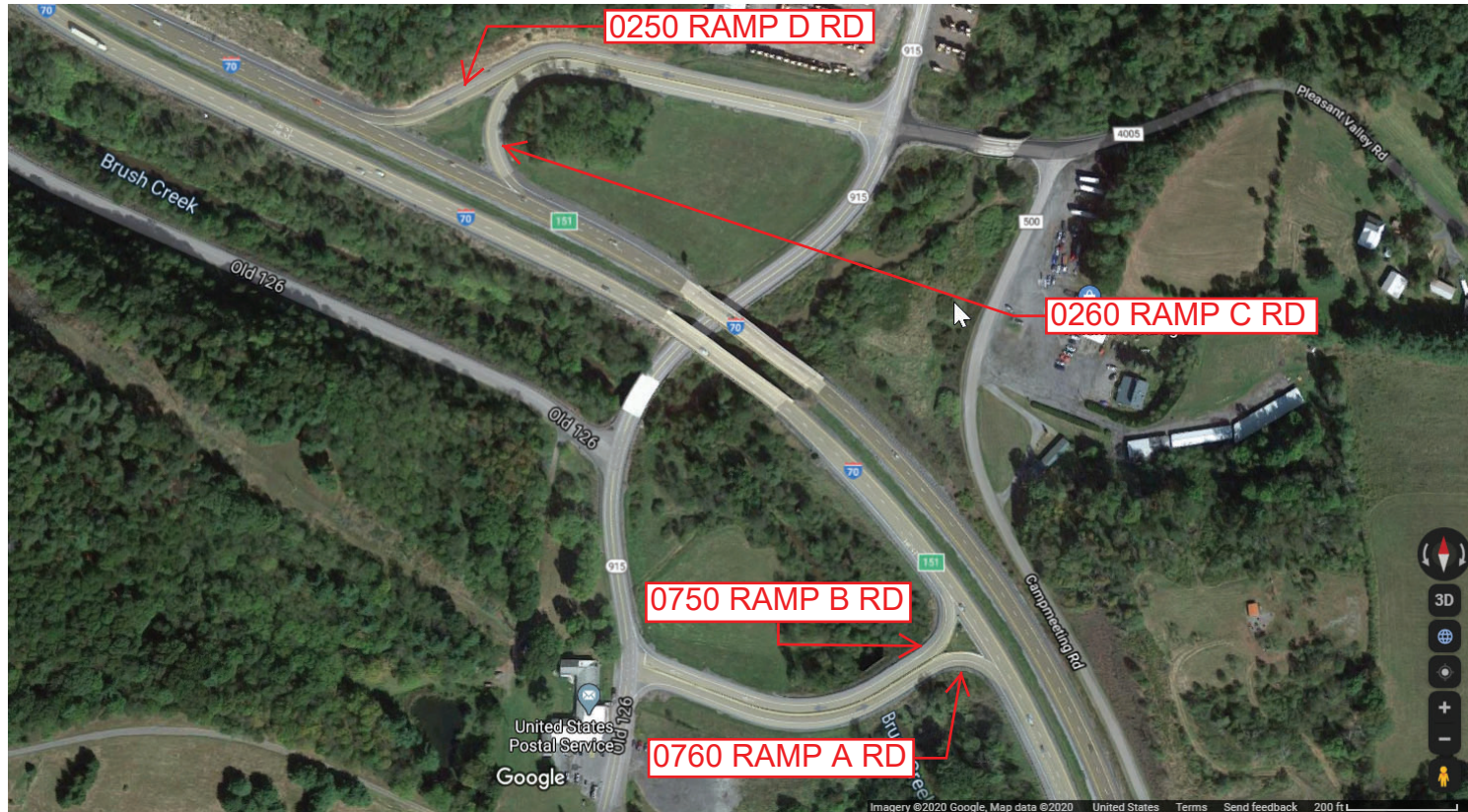
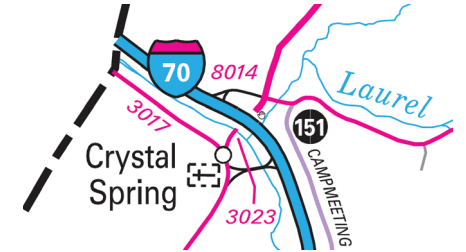
Ramp Segment Number and Ramp Segment Length Information:

Segment	Length	Segment	Length	Segment	Length	Segment	Length
0250	0938						
0260	0880						
0750	0668						
0760	0700						

Primary Route Interchange Exit Number: 151

Secondary Route Interchange Exit Number

PennDOT Type 10 Map View:



Last Date Modified:

May 8, 2020

County: 29

# RMS Interchange Information

Print Form

Interchange Number: 8022

Bureau of Maintenance & Operations  
Roadway Management Division



Interchange Name: MCCONNELSBURG

Intersecting SR's: US 30 Lincoln Hwy & US 522 Great Cove Rd

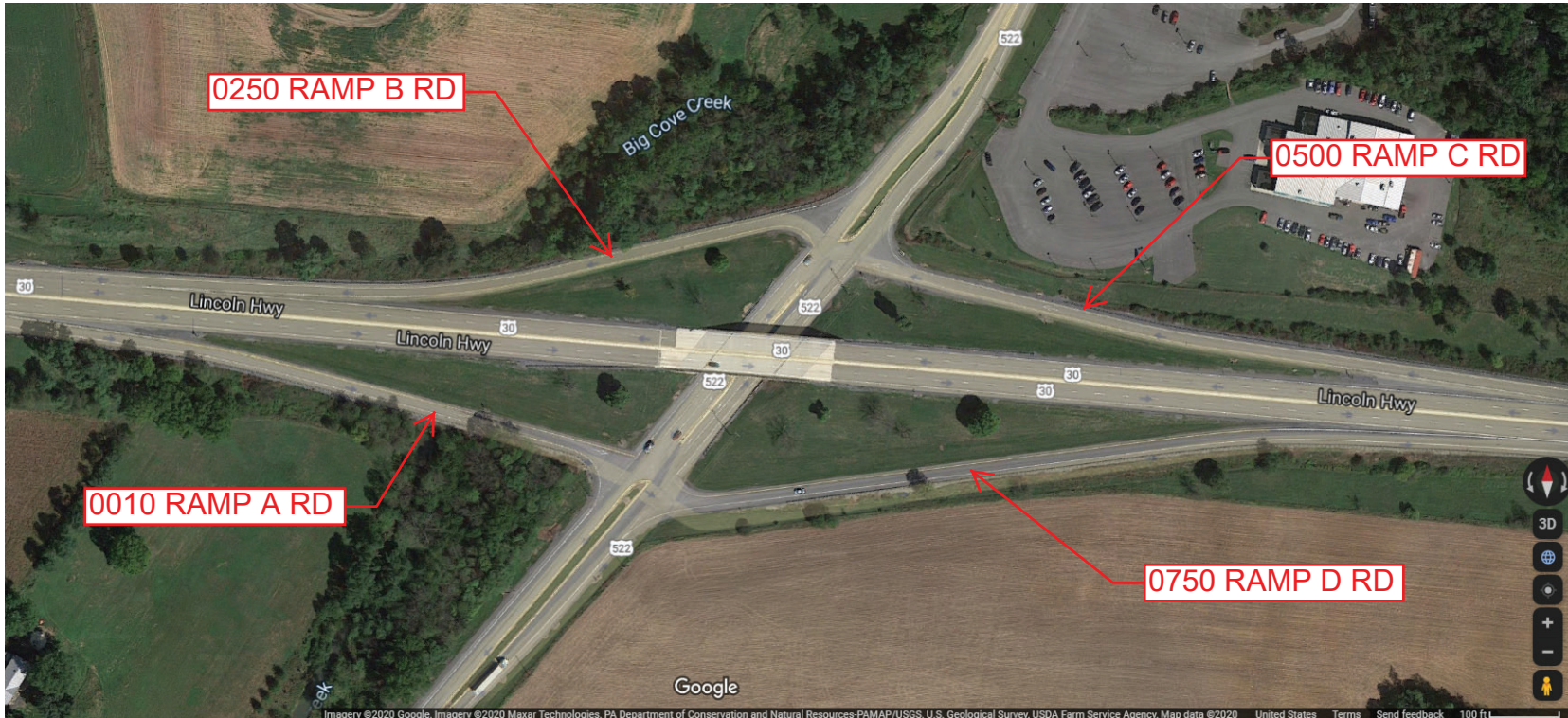
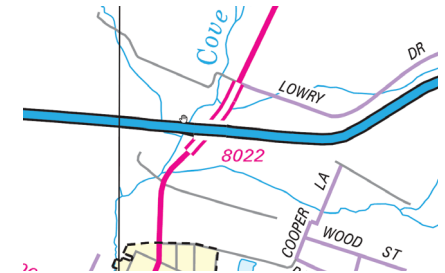
Ramp Segment Number and Ramp Segment Length Information:

Segment	Length	Segment	Length	Segment	Length	Segment	Length
0010	0749						
0250	0654						
0500	0750						
0750	0930						

Primary Route Interchange Exit Number

Secondary Route Interchange Exit Number

PennDOT Type 10 Map View:



Last Date Modified:

May 5, 2020

County: 29

# RMS Interchange Information

Print Form

Interchange Number: 9201

Bureau of Maintenance & Operations  
Roadway Management Division



Interchange Name: I-70 REST STOP - WARFORDSBURG

Intersecting SR's: I-70 Dwight D Eisenhower Hw

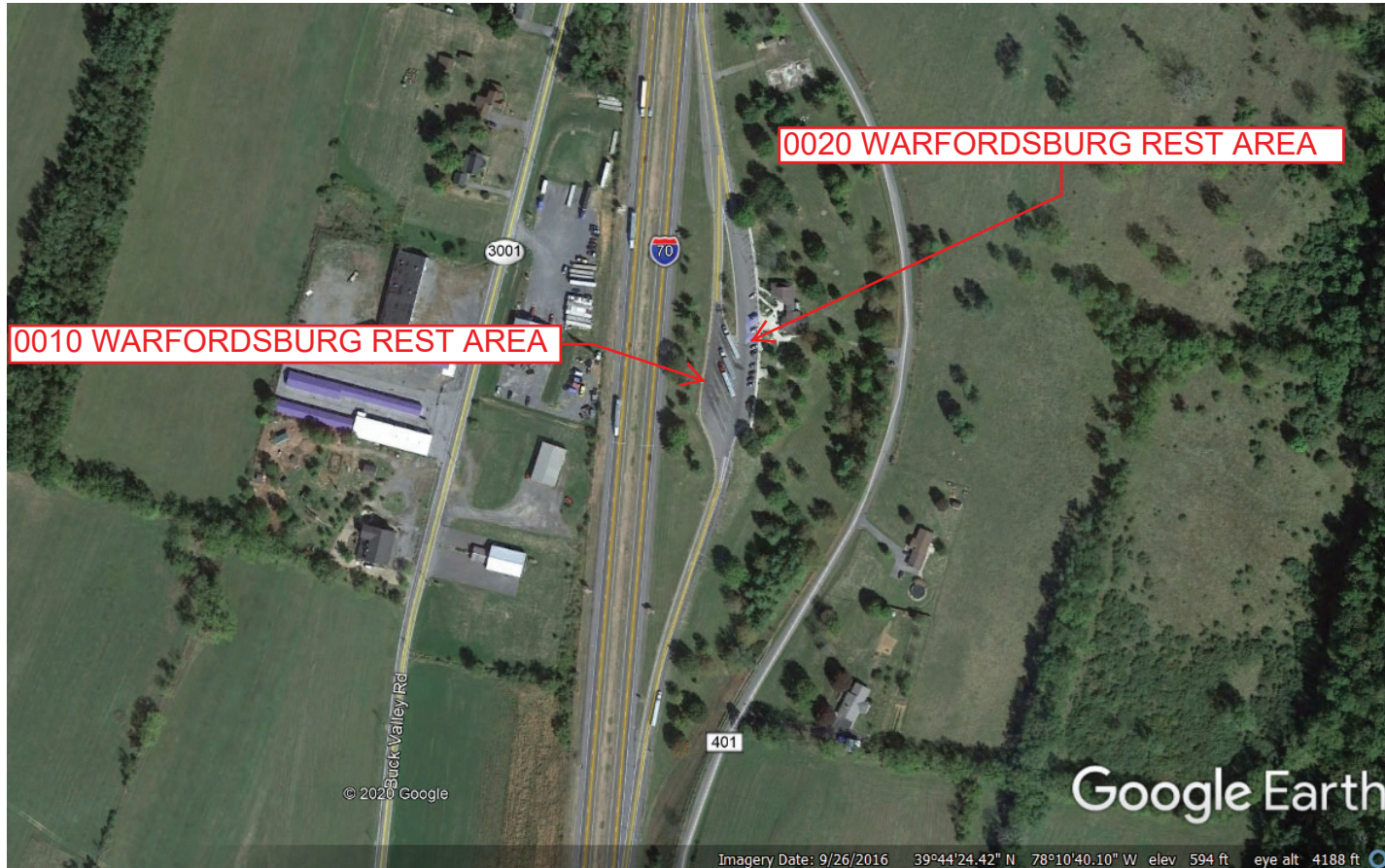
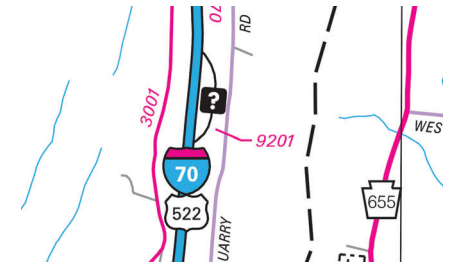
Ramp Segment Number and Ramp Segment Length Information:

Segment	Length	Segment	Length	Segment	Length	Segment	Length
0010	1526						
0020	0246						

Primary Route  
Interchange Exit  
Number

Secondary Route  
Interchange Exit  
Number

PennDOT Type 10 Map View:



Last Date Modified:

May 11, 2020

County: 29

# RMS Interchange Information

Print Form

Interchange Number: 9204

Bureau of Maintenance & Operations  
Roadway Management Division



Interchange Name: I-70 REST STOP - CRYSTAL SPRING

Intersecting SR's: I-70 Dwight D Eisenhower Hw

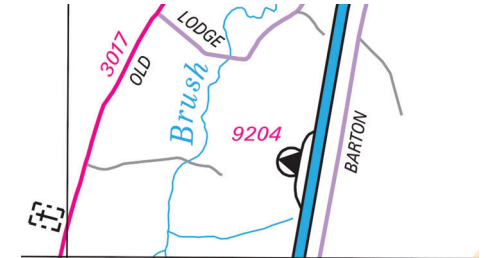
Ramp Segment Number and Ramp Segment Length Information:

Segment	Length	Segment	Length	Segment	Length	Segment	Length
0010	1102						

Primary Route  
Interchange Exit  
Number

Secondary Route  
Interchange Exit  
Number

PennDOT Type 10 Map View:



Last Date Modified:

May 11, 2020

County: 29

# RMS Interchange Information

Print Form

Interchange Number: 9302

Bureau of Maintenance & Operations  
Roadway Management Division



Interchange Name: US 30 TRUCK ESCAPE RAMP

Intersecting SR's: US 30 Lincoln Hw

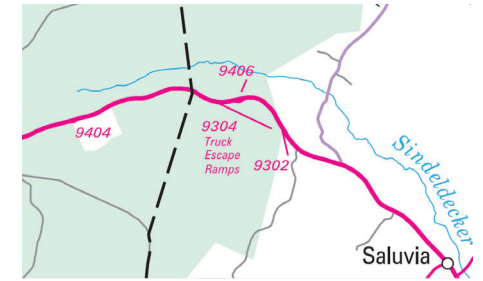
Ramp Segment Number and Ramp Segment Length Information:

Segment	Length	Segment	Length	Segment	Length	Segment	Length
0012	0726						

Primary Route  
Interchange Exit  
Number

Secondary Route  
Interchange Exit  
Number

PennDOT Type 10 Map View:



Last Date Modified:

May 11, 2020



County: 29

# RMS Interchange Information

Print Form

Interchange Number: 9304

Bureau of Maintenance & Operations  
Roadway Management Division



Interchange Name: US 30 TRUCK ESCAPE RAMP

Intersecting SR's: US 30 Lincoln Hw

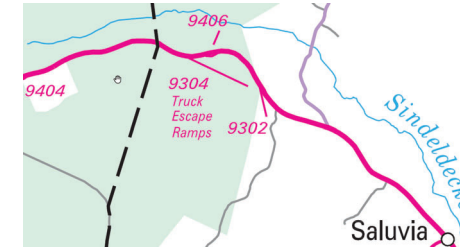
Ramp Segment Number and Ramp Segment Length Information:

Segment	Length	Segment	Length	Segment	Length	Segment	Length
0010	0453						

Primary Route  
Interchange Exit  
Number

Secondary Route  
Interchange Exit  
Number

PennDOT Type 10 Map View:



Last Date Modified:

May 11, 2020

County: 29

# RMS Interchange Information

Print Form

Interchange Number: 9402

Bureau of Maintenance & Operations  
Roadway Management Division



Interchange Name: US 30 TRUCK PULLOFF NUMBER 1

Intersecting SR's: US 30 Lincoln Hw

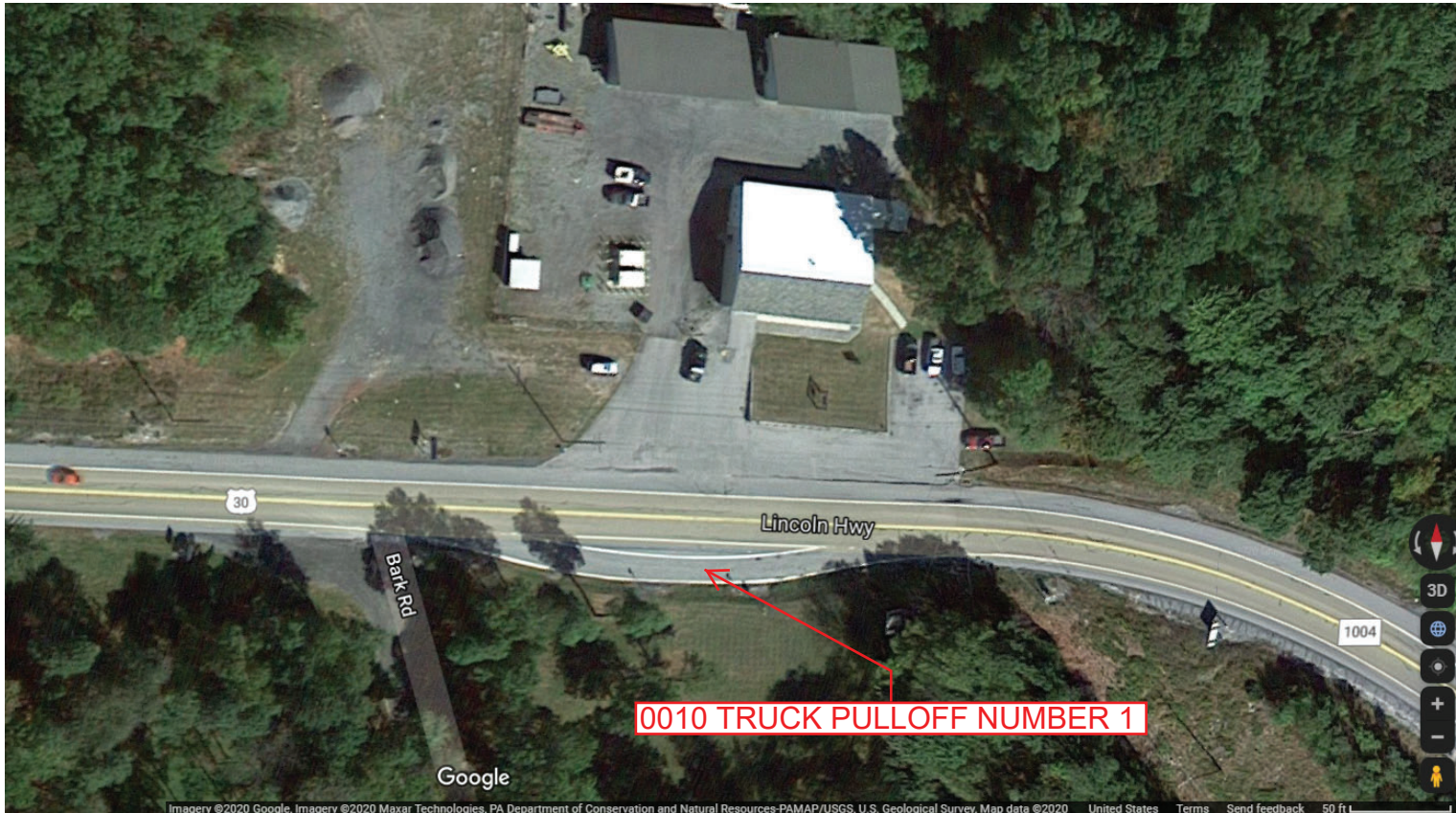
Ramp Segment Number and Ramp Segment Length Information:

Segment	Length	Segment	Length	Segment	Length	Segment	Length
0010	0164						

Primary Route Interchange Exit Number

Secondary Route Interchange Exit Number

PennDOT Type 10 Map View:



Last Date Modified:

May 11, 2020

County: 29

# RMS Interchange Information

Print Form

Interchange Number: 9404

Bureau of Maintenance & Operations  
Roadway Management Division



Interchange Name: US 30 TRUCK PULLOFF NUMBER 2

Intersecting SR's: US 30 Lincoln Hw

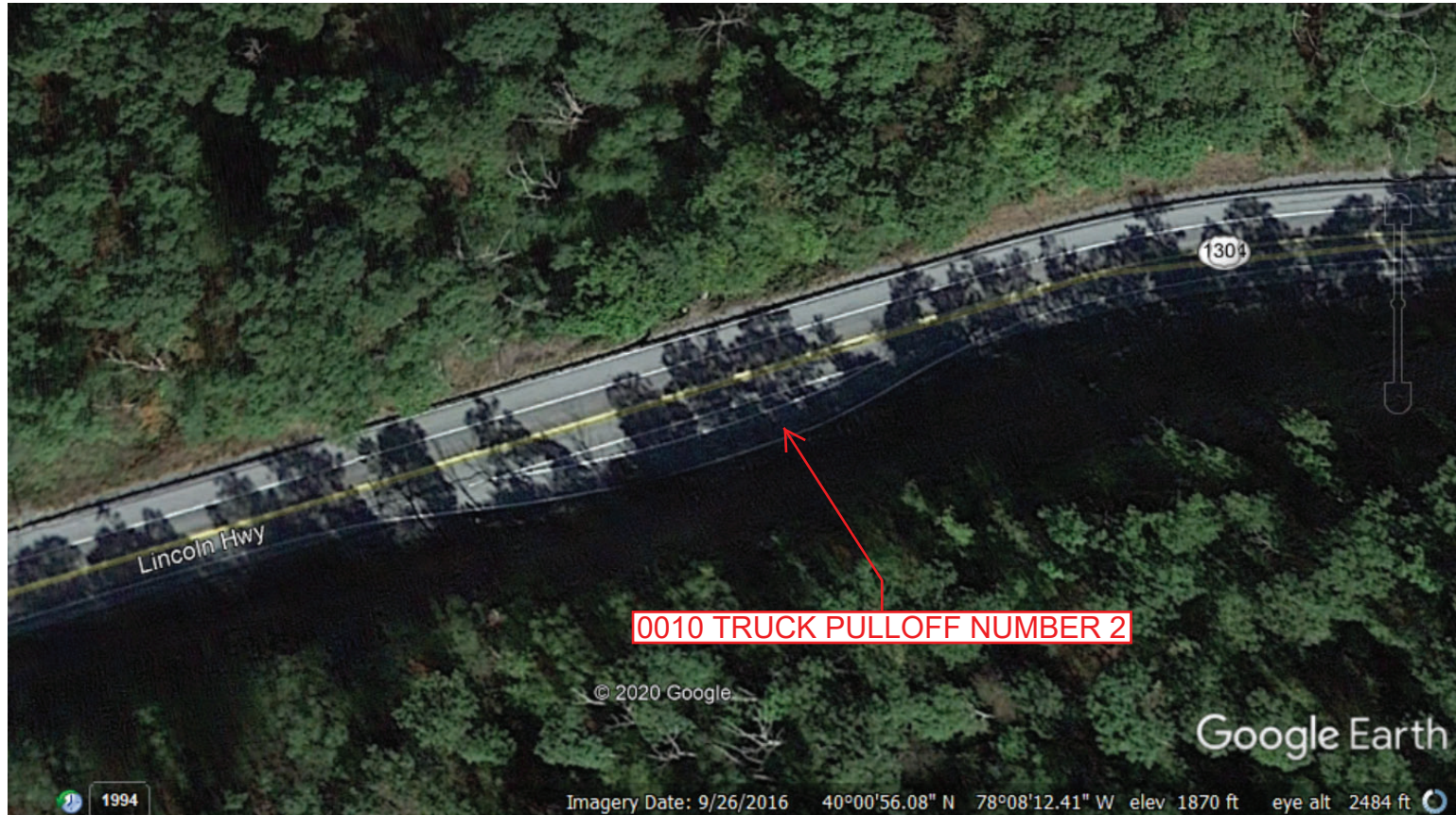
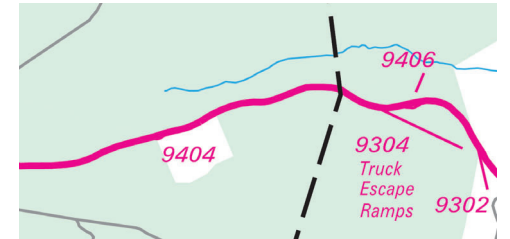
Ramp Segment Number and Ramp Segment Length Information:

Segment	Length	Segment	Length	Segment	Length	Segment	Length
0010	0184						

Primary Route  
Interchange Exit  
Number

Secondary Route  
Interchange Exit  
Number

PennDOT Type 10 Map View:



Last Date Modified:

May 11, 2020

County: 29

# RMS Interchange Information

Print Form

Interchange Number: 9406

Bureau of Maintenance & Operations  
Roadway Management Division



Interchange Name: US 30 TRUCK PULLOFF NUMBER 3

Intersecting SR's: US 30 Lincoln Hw

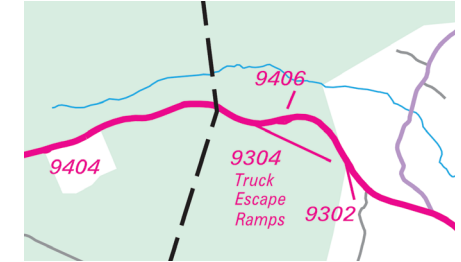
Ramp Segment Number and Ramp Segment Length Information:

Segment	Length	Segment	Length	Segment	Length	Segment	Length
0010	0179						

Primary Route  
Interchange Exit  
Number

Secondary Route  
Interchange Exit  
Number

PennDOT Type 10 Map View:



Last Date Modified:

May 11, 2020