

County: 10

RMS Interchange Information

Print Form

Interchange Number: 8001

Bureau of Maintenance & Operations
Asset Management Division



Interchange Name: MARS

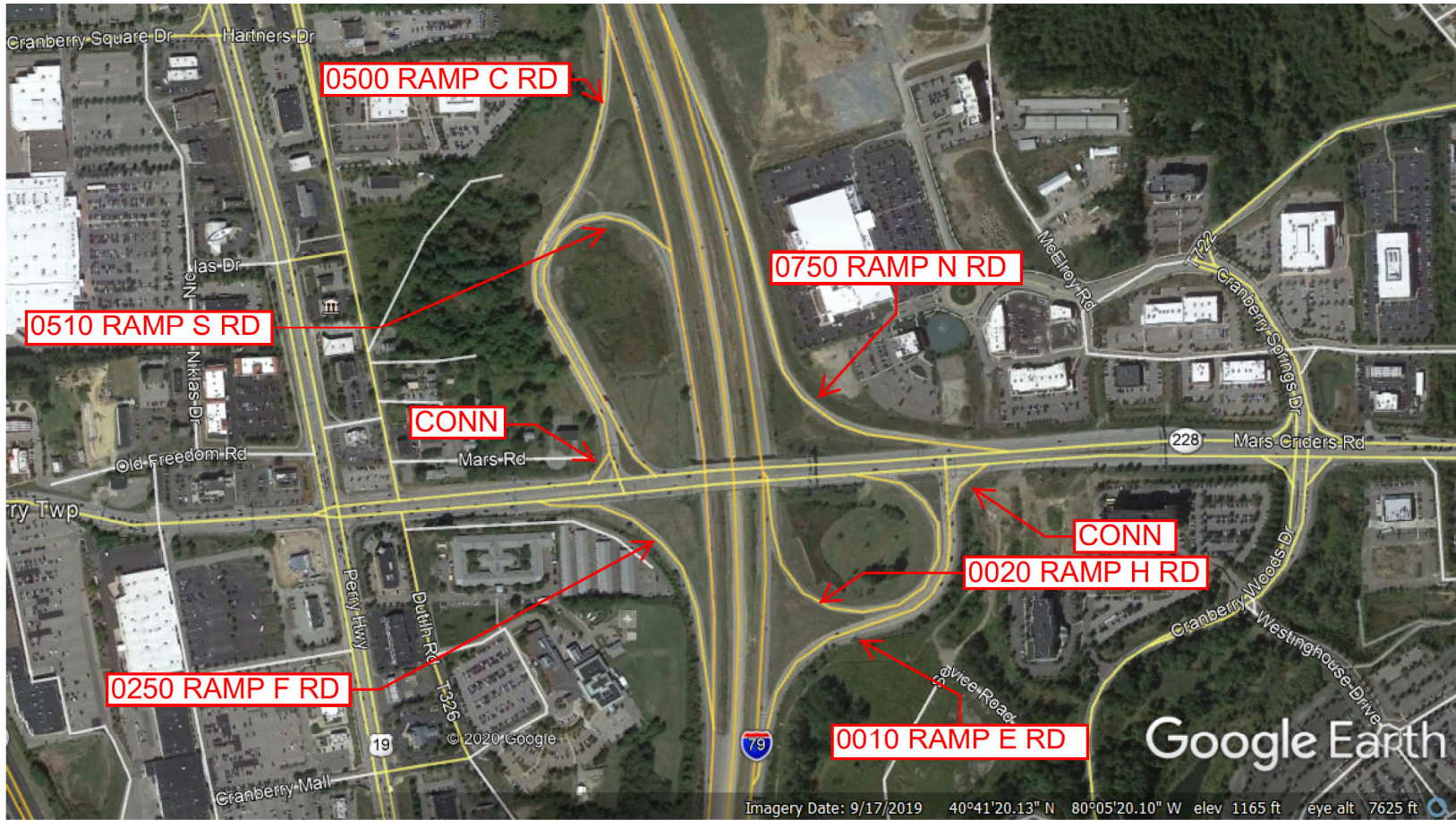
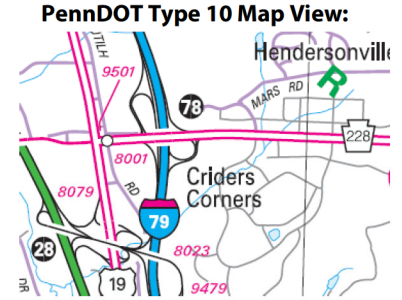
Intersecting SR's: I-79, PA 228 Mars Crider Rd & SR 9479 Collector Rd

Ramp Segment Number and Ramp Segment Length Information:

Segment	Length	Segment	Length	Segment	Length	Segment	Length
0010	1340	0750	1851				
0020	1203						
0250	0767						
0500	1851						
0510	1508						

Primary Route Interchange Exit Number: 78

Secondary Route Interchange Exit Number:



Last Date Modified: May 22, 2023

County: 10

RMS Interchange Information

Print Form

Interchange Number: 8002

Bureau of Maintenance & Operations
Asset Management Division



Interchange Name: WEST MORAIN PARK

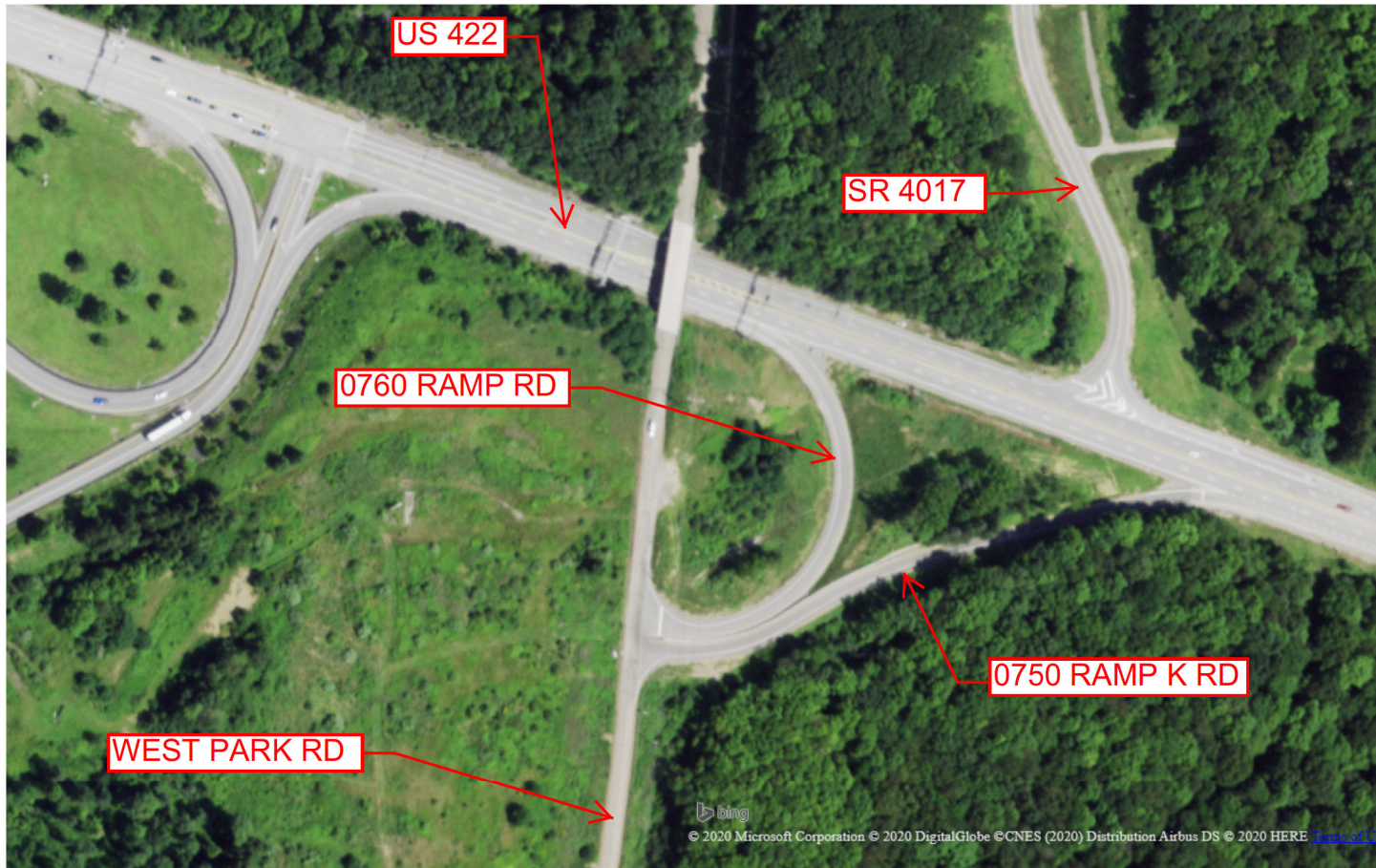
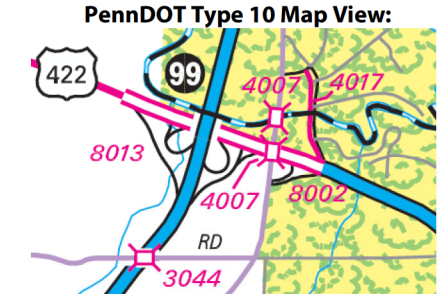
Intersecting SR's: US 422 and T890 West Park Rd

Ramp Segment Number and Ramp Segment Length Information:

Segment	Length	Segment	Length	Segment	Length	Segment	Length
0750	0773						
0760	0619						

Primary Route Interchange Exit Number

Secondary Route Interchange Exit Number



Last Date Modified: May 22, 2023

County: 10

RMS Interchange Information

Print Form

Interchange Number: 8003

Bureau of Maintenance & Operations
Asset Management Division



Interchange Name: EVANS CITY SOUTH

Intersecting SR's: I-79, PA 528 and SR 9502 Park and Ride Rd

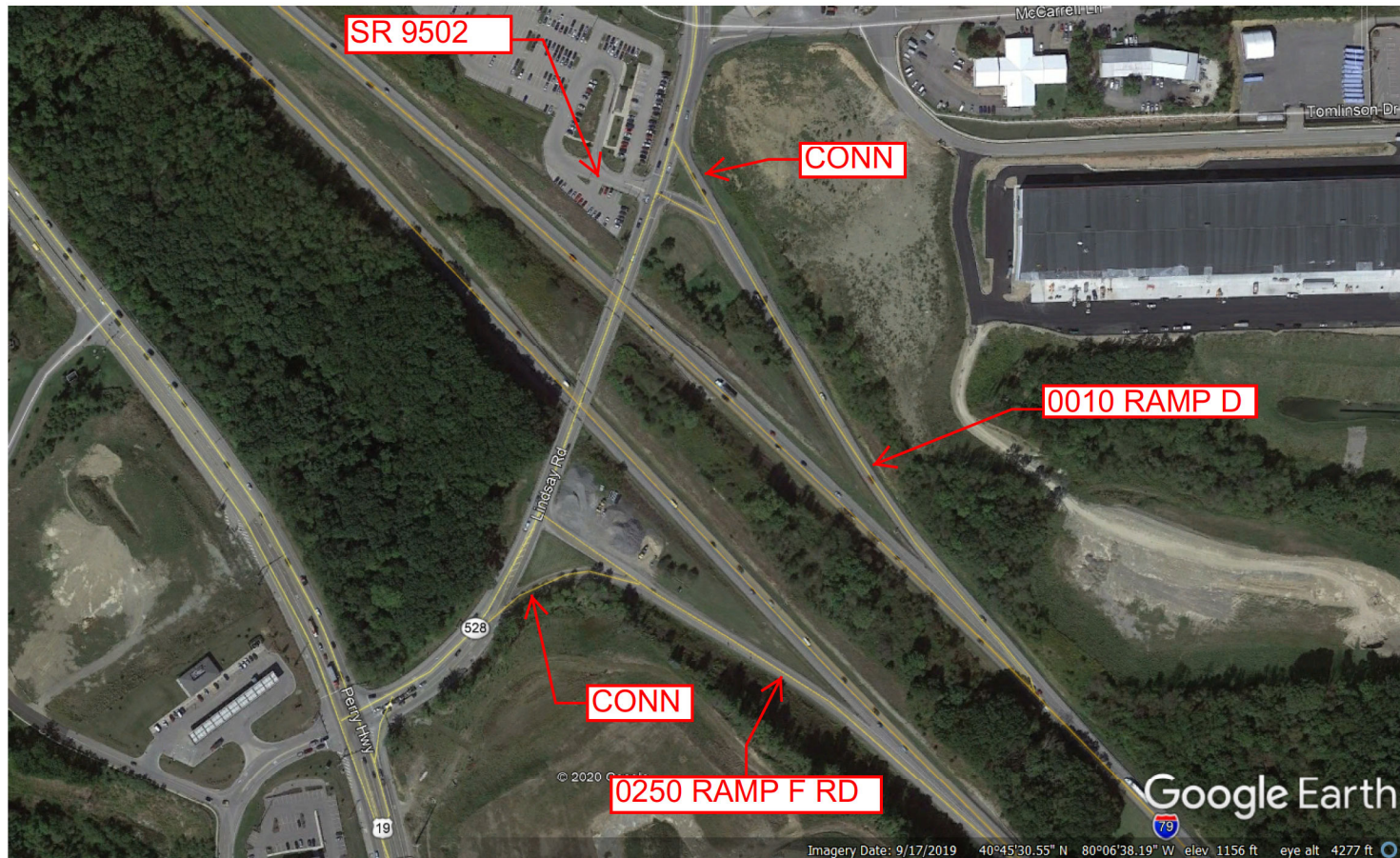
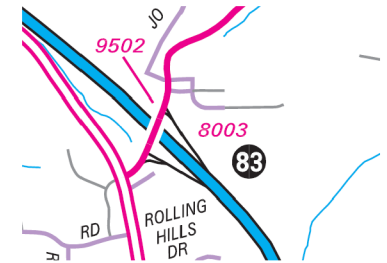
Ramp Segment Number and Ramp Segment Length Information:

Segment	Length	Segment	Length	Segment	Length	Segment	Length
0010	1045						
0250	0861						

Primary Route Interchange Exit Number: 83

Secondary Route Interchange Exit Number

PennDOT Type 10 Map View:



Last Date Modified:

May 22, 2023

County: 10

RMS Interchange Information

Print Form

Interchange Number: 8004

Bureau of Maintenance & Operations
Asset Management Division



Interchange Name: MORAINE PARK

Intersecting SR's: US 422 and SR 4005 Pleasant Valley Rd

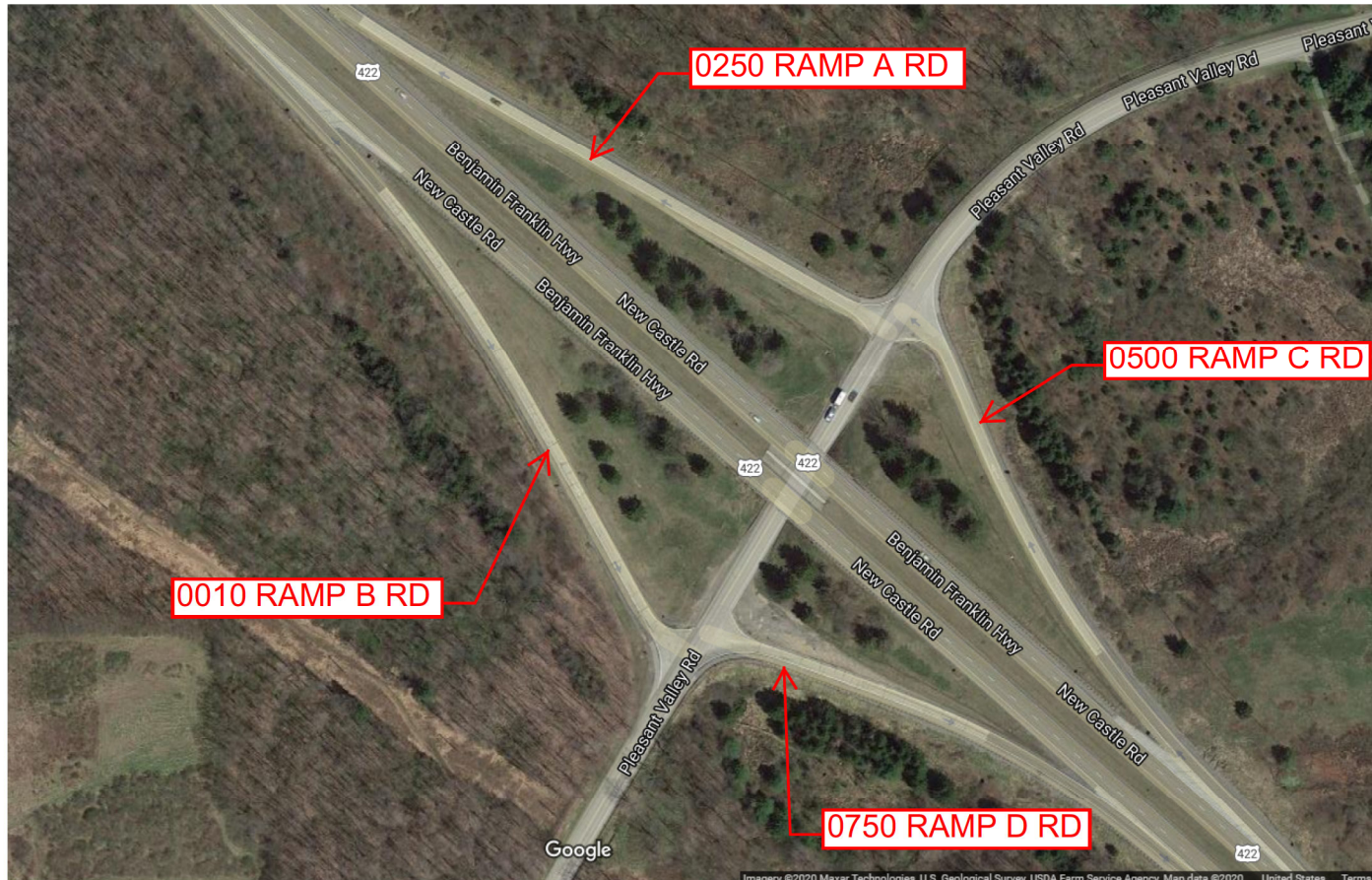
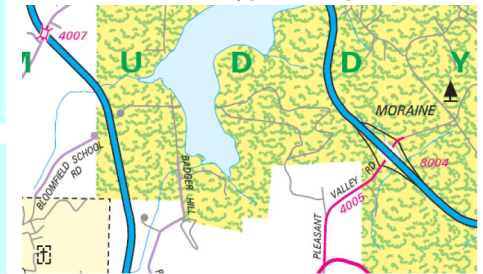
Ramp Segment Number and Ramp Segment Length Information:

Segment	Length	Segment	Length	Segment	Length	Segment	Length
0010	0870						
0250	0937						
0500	0709						
0750	0564						

Primary Route
Interchange Exit
Number

Secondary Route
Interchange Exit
Number

PennDOT Type 10 Map View:



Last Date Modified:

May 22, 2023

County: 10

RMS Interchange Information

Print Form

Interchange Number: 8005

Bureau of Maintenance & Operations
Asset Management Division



Interchange Name: EVANS CITY SOUTH

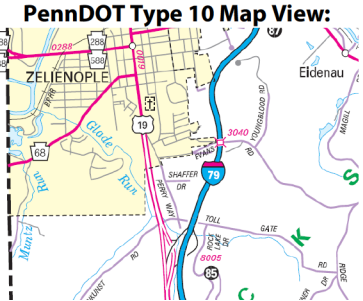
Intersecting SR's: I-79 and US 19 Perry Hw

Ramp Segment Number and Ramp Segment Length Information:

Segment	Length	Segment	Length	Segment	Length	Segment	Length
0250	1633						
0500	1442						
0510	0391						

Primary Route Interchange Exit Number: 85

Secondary Route Interchange Exit Number



Last Date Modified: May 22, 2023

County: 10

RMS Interchange Information

Print Form

Interchange Number: 8006

Bureau of Maintenance & Operations
Asset Management Division



Interchange Name: PROSPECT

Intersecting SR's: US 422 and PA 528 Franklin St

Ramp Segment Number and Ramp Segment Length Information:

Segment	Length	Segment	Length	Segment	Length	Segment	Length
0010	1305						
0250	0887						
0500	1213						
0750	0688						

Primary Route Interchange Exit Number

Secondary Route Interchange Exit Number

PennDOT Type 10 Map View:



Last Date Modified: May 22, 2023

County: 10

RMS Interchange Information

Print Form

Interchange Number: 8007

Bureau of Maintenance & Operations
Asset Management Division



Interchange Name: ZELIENOPLE

Intersecting SR's: I-79 and PA 68

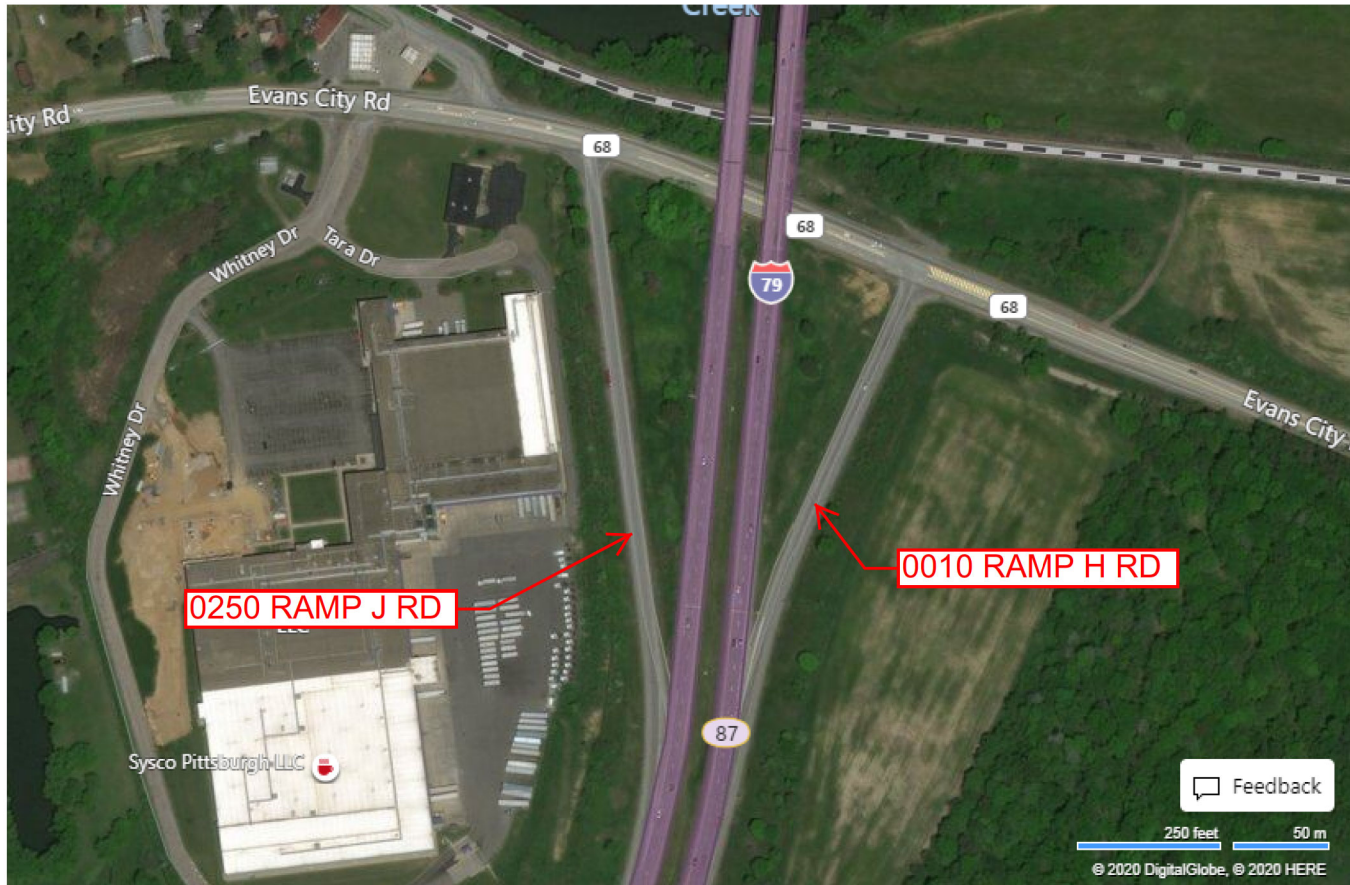
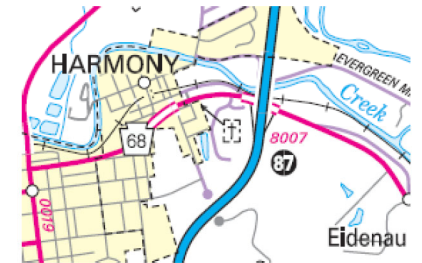
Ramp Segment Number and Ramp Segment Length Information:

Segment	Length	Segment	Length	Segment	Length	Segment	Length
0010	0710						
0250	0981						

Primary Route Interchange Exit Number: 87

Secondary Route Interchange Exit Number

PennDOT Type 10 Map View:



Feedback

250 feet 50 m

© 2020 DigitalGlobe, © 2020 HERE

© 2020 Microsoft

Last Date Modified:

May 22, 2023

County: 10

RMS Interchange Information

Print Form

Interchange Number: 8008

Bureau of Maintenance & Operations
Asset Management Division



Interchange Name: LYNDORA

Intersecting SR's: US 422 and PA 356

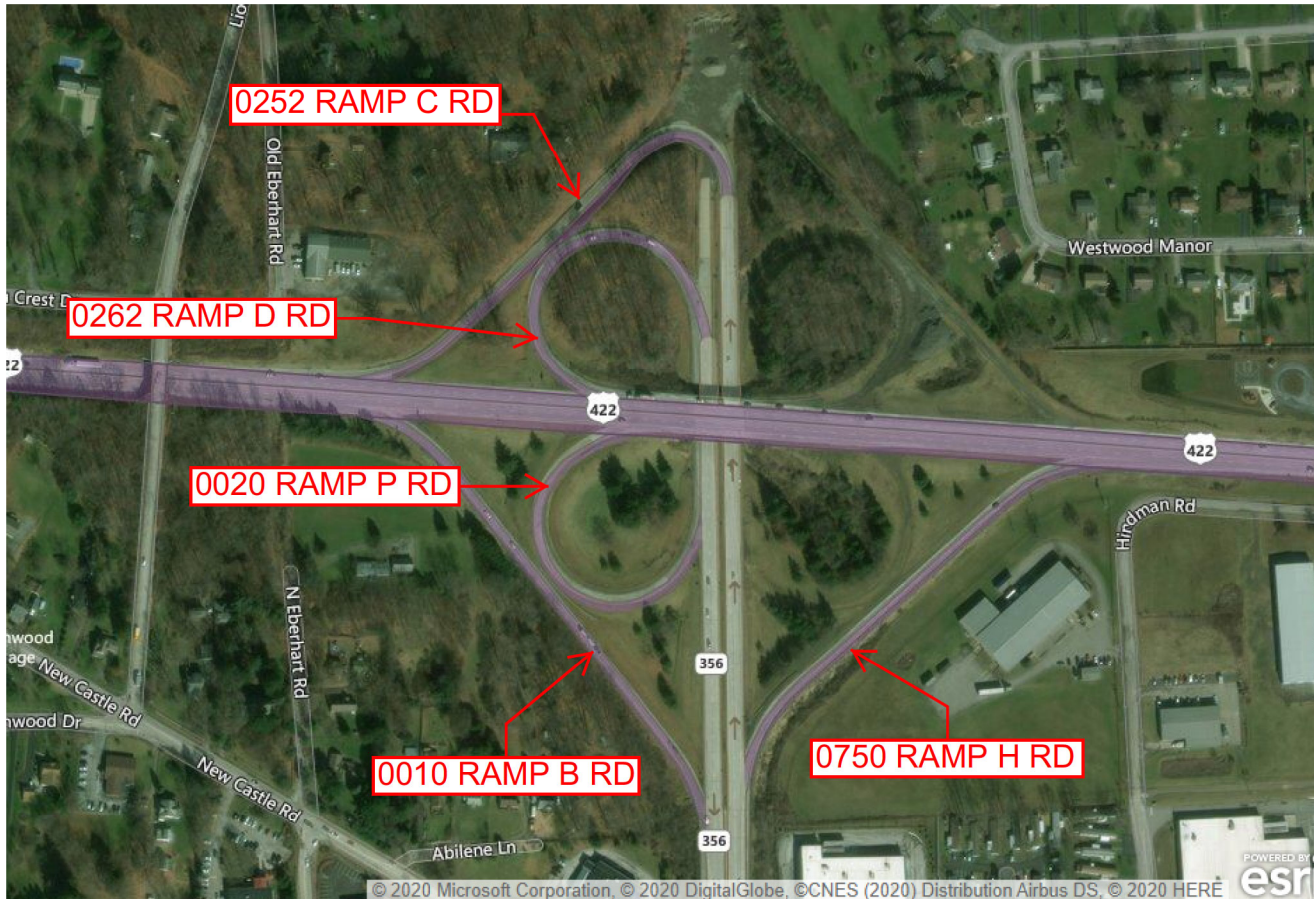
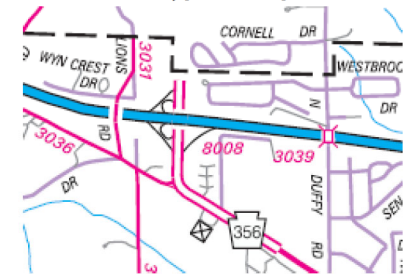
Ramp Segment Number and Ramp Segment Length Information:

Segment	Length	Segment	Length	Segment	Length	Segment	Length
0010	1017						
0020	0727						
0252	1499						
0262	0950						
0750	0947						

Primary Route
Interchange Exit
Number

Secondary Route
Interchange Exit
Number

PennDOT Type 10 Map View:



© 2020 Microsoft Corporation, © 2020 DigitalGlobe, ©CNES (2020) Distribution Airbus DS, © 2020 HERE esri

Last Date Modified:

May 22, 2023

County: 10

RMS Interchange Information

Print Form

Interchange Number: 8009

Bureau of Maintenance & Operations
Asset Management Division



Interchange Name: HARMONY

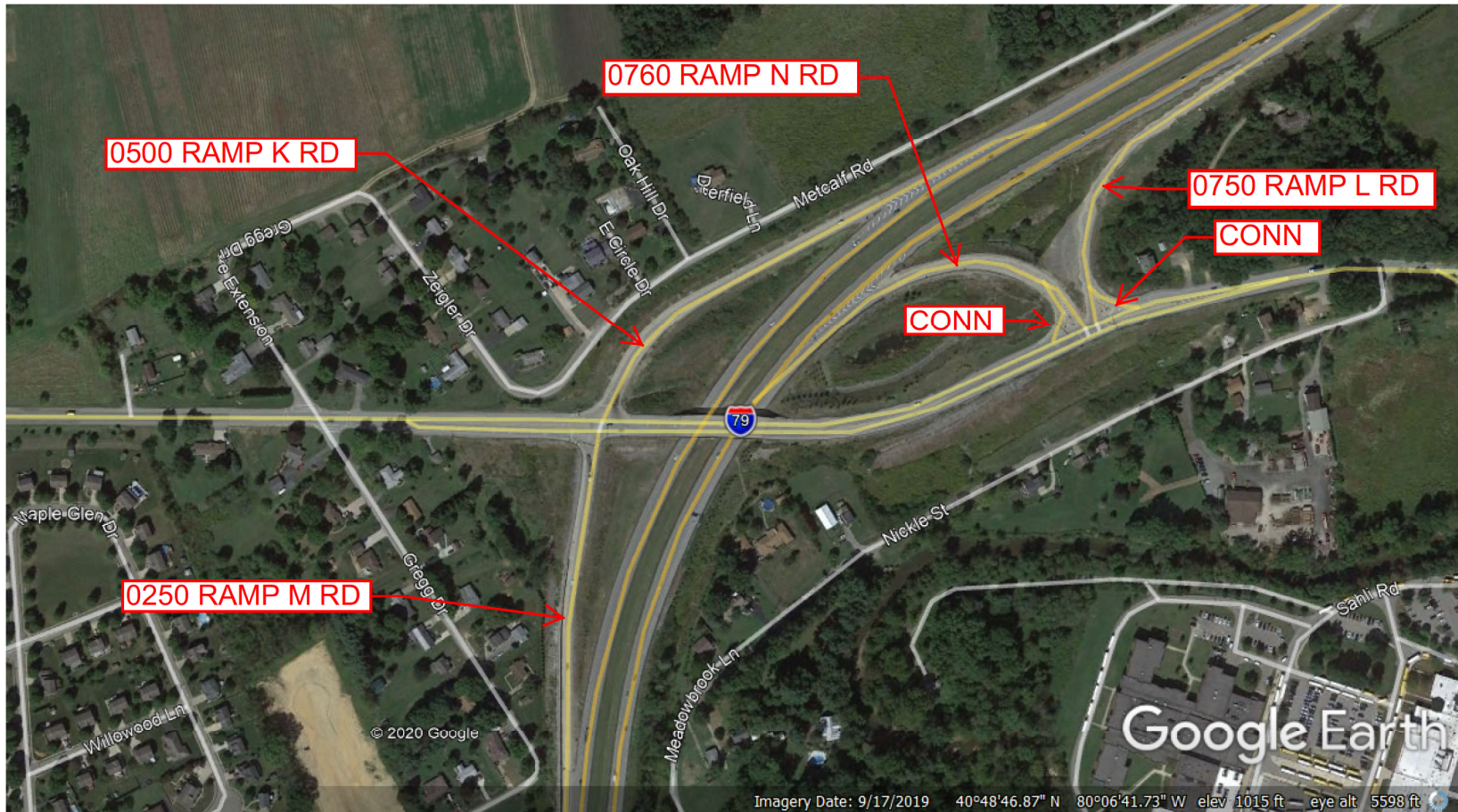
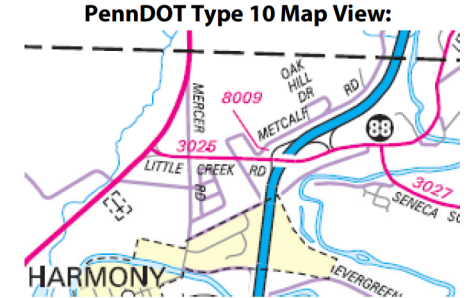
Intersecting SR's: I-79 and SR 3025 Little Creek Rd

Ramp Segment Number and Ramp Segment Length Information:

Segment	Length	Segment	Length	Segment	Length	Segment	Length
0250	0869						
0500	0914						
0750	0831						
0760	0572						

Primary Route Interchange Exit Number: 88

Secondary Route Interchange Exit Number



Last Date Modified: May 22, 2023

County: 10

RMS Interchange Information

Print Form

Interchange Number: 8010

Bureau of Maintenance & Operations
Asset Management Division



Interchange Name: BUTLER

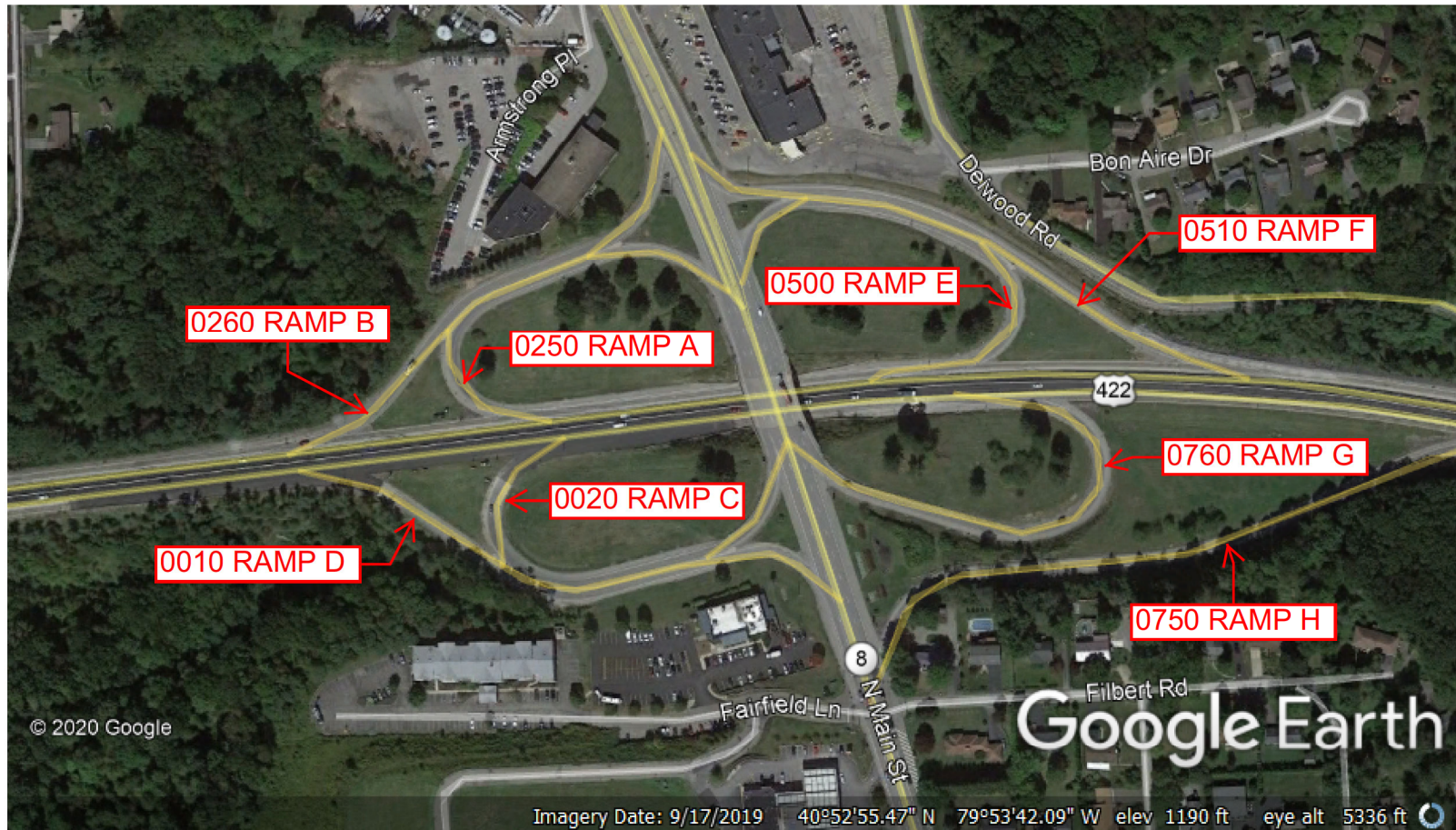
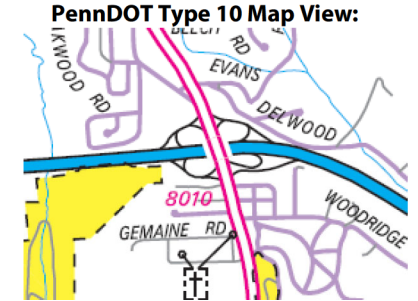
Intersecting SR's: US 422 and PA 8 Main St

Ramp Segment Number and Ramp Segment Length Information:

Segment	Length	Segment	Length	Segment	Length	Segment	Length
0010	0825	0510	0855				
0020	0725	0750	1144				
0250	0644	0760	0696				
0260	0711						
0500	0676						

Primary Route Interchange Exit Number

Secondary Route Interchange Exit Number



© 2020 Google

Google Earth

Imagery Date: 9/17/2019 40°52'55.47" N 79°53'42.09" W elev 1190 ft eye alt 5336 ft

Last Date Modified: May 22, 2023

County: 10

RMS Interchange Information

Print Form

Interchange Number: 8011

Bureau of Maintenance & Operations
Asset Management Division



Interchange Name: PORTERSVILLE

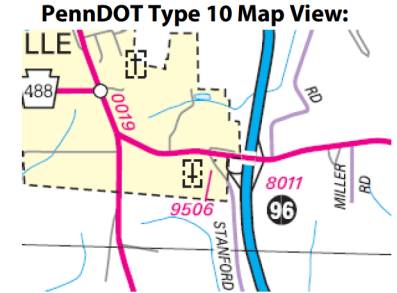
Intersecting SR's: I-79 Raymond Shaffer Hw and PA 488 East Portersville Rd

Ramp Segment Number and Ramp Segment Length Information:

Segment	Length	Segment	Length	Segment	Length	Segment	Length
0010	0695						
0252	0854						
0262	0599						
0750	0694						

Primary Route Interchange Exit Number: 96

Secondary Route Interchange Exit Number:



Last Date Modified: May 22, 2023

County: 10

RMS Interchange Information

Print Form

Interchange Number: 8012

Bureau of Maintenance & Operations
Asset Management Division



Interchange Name: NORTH BUTLER

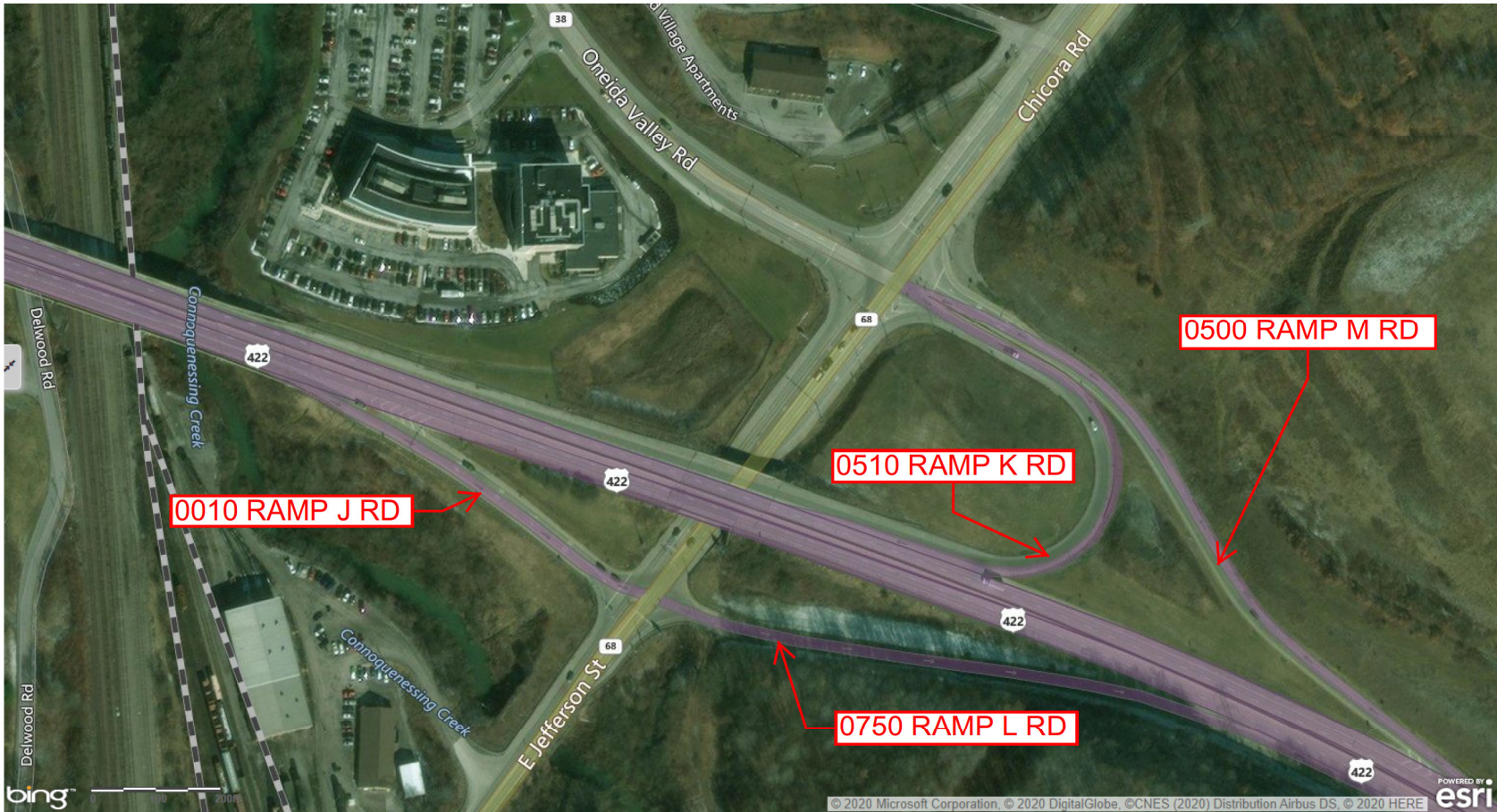
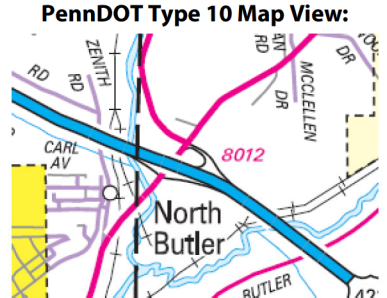
Intersecting SR's: US 422, PA 38 and PA 68

Ramp Segment Number and Ramp Segment Length Information:

Segment	Length	Segment	Length	Segment	Length	Segment	Length
0010	0387						
0500	1054						
0510	0678						
0750	0677						

Primary Route Interchange Exit Number

Secondary Route Interchange Exit Number



Last Date Modified: May 22, 2023

County: 10

RMS Interchange Information

Print Form

Interchange Number: 8013

Bureau of Maintenance & Operations
Asset Management Division



Interchange Name: NEW CASTLER/BUTLER

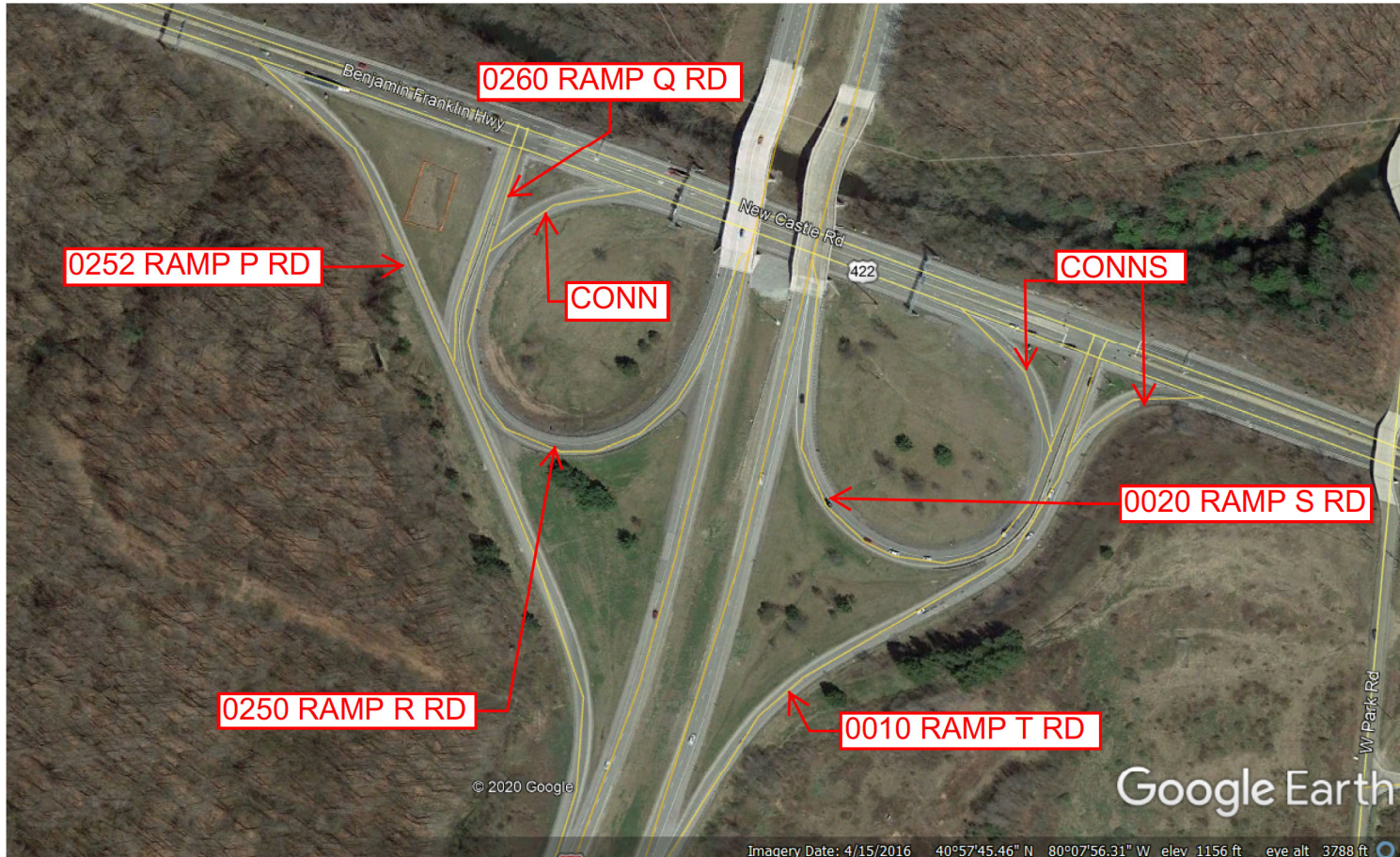
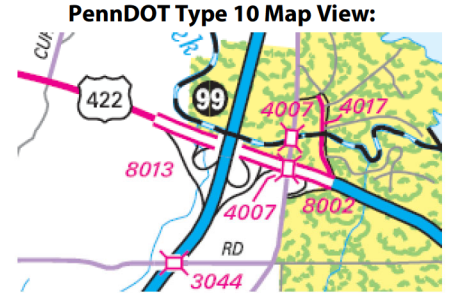
Intersecting SR's: I-79 and US 422

Ramp Segment Number and Ramp Segment Length Information:

Segment	Length	Segment	Length	Segment	Length	Segment	Length
0010	1111						
0020	0862						
0250	0876						
0252	0469						
0260	1208						

Primary Route Interchange Exit Number: 99

Secondary Route Interchange Exit Number



Last Date Modified: May 22, 2023

County: 10

RMS Interchange Information

Print Form

Interchange Number: 8015

Bureau of Maintenance & Operations
Asset Management Division



Interchange Name: SLIPPERY ROCK INT

Intersecting SR's: I-79 & PA 108

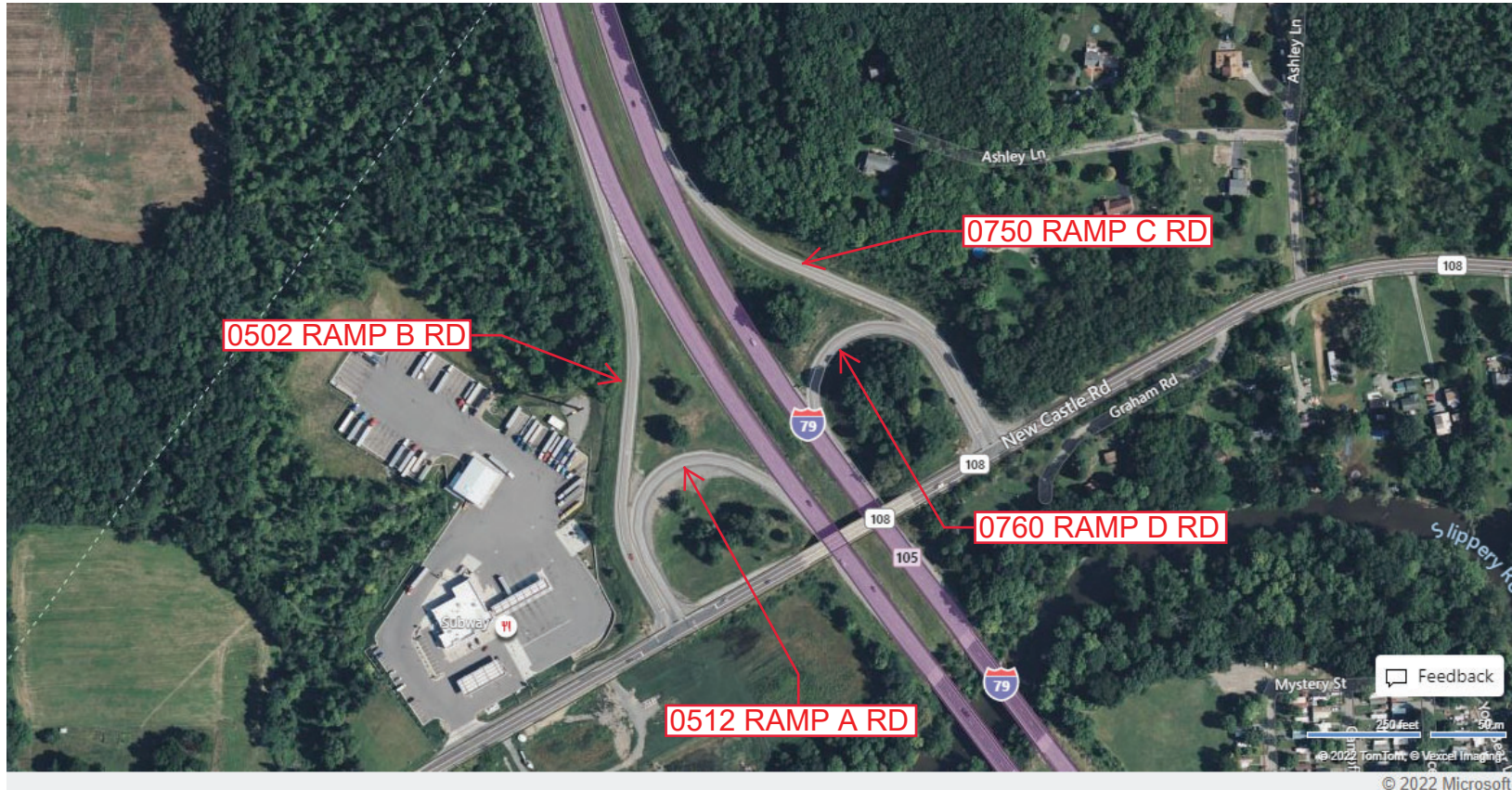
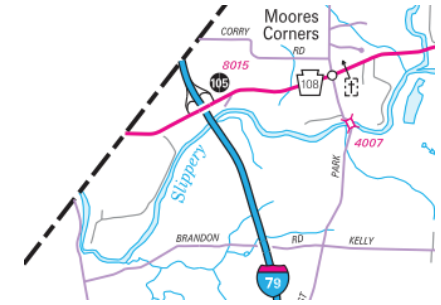
Ramp Segment Number and Ramp Segment Length Information:

Segment	Length	Segment	Length	Segment	Length	Segment	Length
0502	0899						
0512	0652						
0750	0970						
0760	0647						

Primary Route Interchange Exit Number

Secondary Route Interchange Exit Number

PennDOT Type 10 Map View:



County: 10

RMS Interchange Information

Print Form

Interchange Number: 8016

Bureau of Maintenance & Operations
Asset Management Division



Interchange Name: PORTERSVILLE NORTH

Intersecting SR's: US 422 and US 19

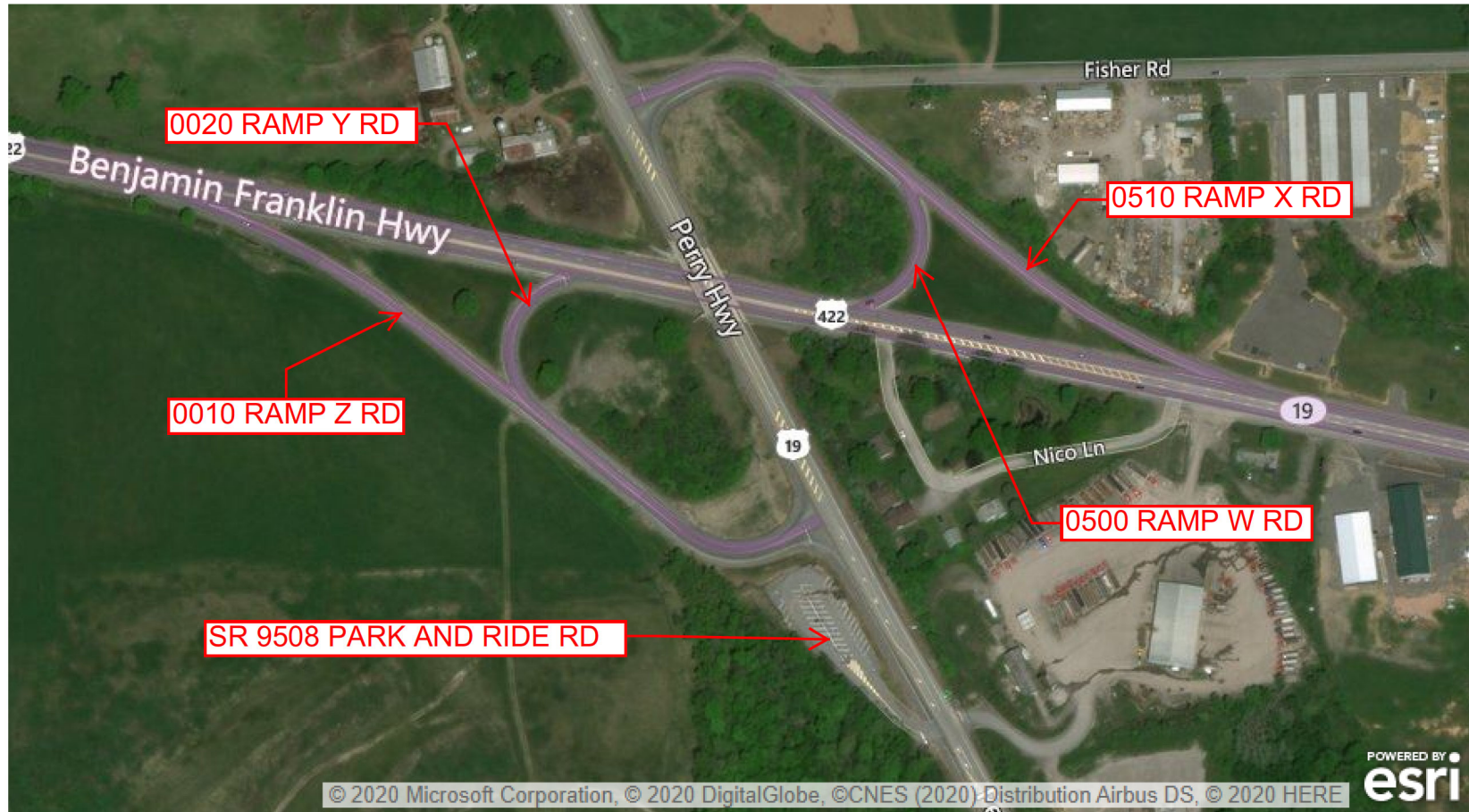
Ramp Segment Number and Ramp Segment Length Information:

Segment	Length	Segment	Length	Segment	Length	Segment	Length
0010	1223						
0020	0863						
0500	0801						
0510	1166						

Primary Route Interchange Exit Number

Secondary Route Interchange Exit Number

PennDOT Type 10 Map View:



© 2020 Microsoft Corporation, © 2020 DigitalGlobe, ©CNES (2020) Distribution Airbus DS, © 2020 HERE



Last Date Modified: May 22, 2023

County: 10

RMS Interchange Information

Print Form

Interchange Number: 8018

Bureau of Maintenance & Operations
Asset Management Division



Interchange Name: EAST BUTLER

Intersecting SR's: US 422, SR 2006 Mitchell Hill Rd and T590 Protzman Rd

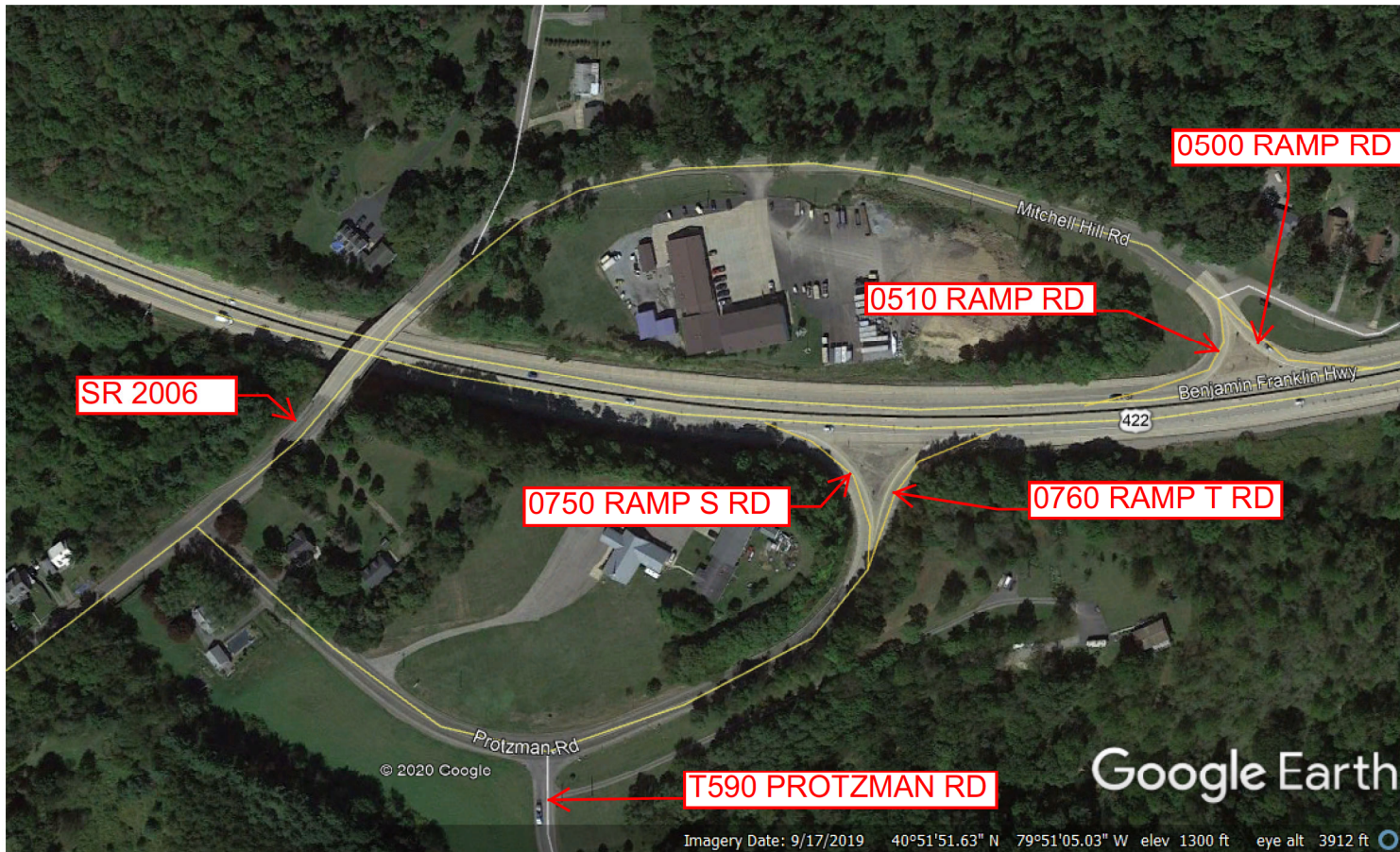
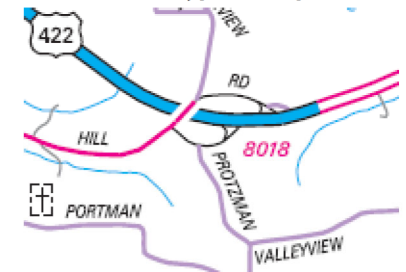
Ramp Segment Number and Ramp Segment Length Information:

Segment	Length	Segment	Length	Segment	Length	Segment	Length
0500	1562						
0510	1503						
0750	1447						
0760	1472						

Primary Route Interchange Exit Number

Secondary Route Interchange Exit Number

PennDOT Type 10 Map View:



Last Date Modified: May 22, 2023

County: 10

RMS Interchange Information

Print Form

Interchange Number: 8019

Bureau of Maintenance & Operations
Asset Management Division



Interchange Name: FREEPORT

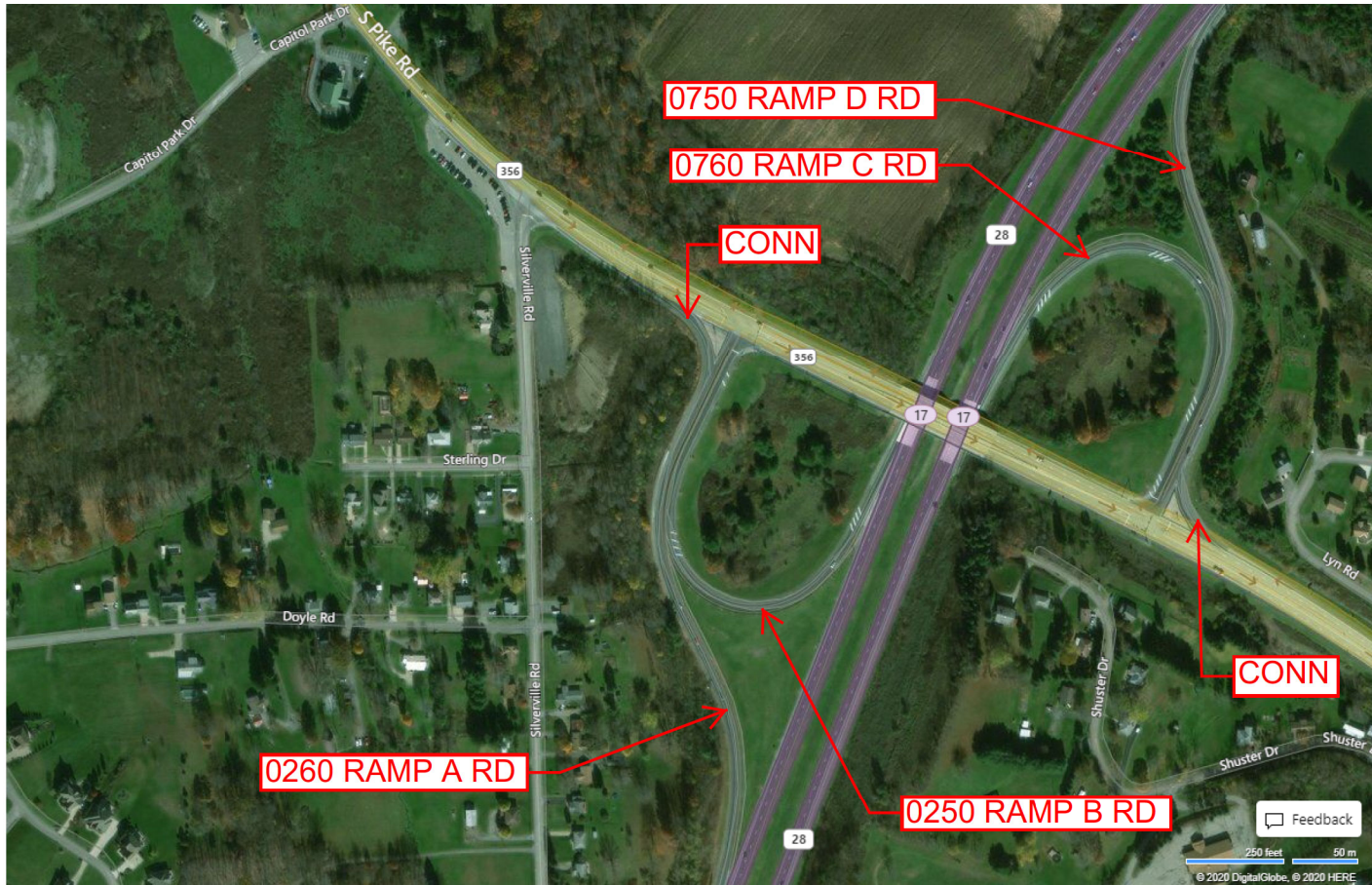
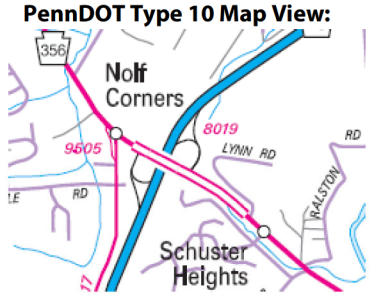
Intersecting SR's: PA 28 and PA 356

Ramp Segment Number and Ramp Segment Length Information:

Segment	Length	Segment	Length	Segment	Length	Segment	Length
0250	1270						
0260	1558						
0750	1370						
0760	1246						

Primary Route Interchange Exit Number: 17

Secondary Route Interchange Exit Number



Last Date Modified: May 22, 2023

County: 10

RMS Interchange Information

Print Form

Interchange Number: 8021

Bureau of Maintenance & Operations
Asset Management Division



Interchange Name: HANSEN AVE

Intersecting SR's: PA 8 and SR 3001 Hansen Av

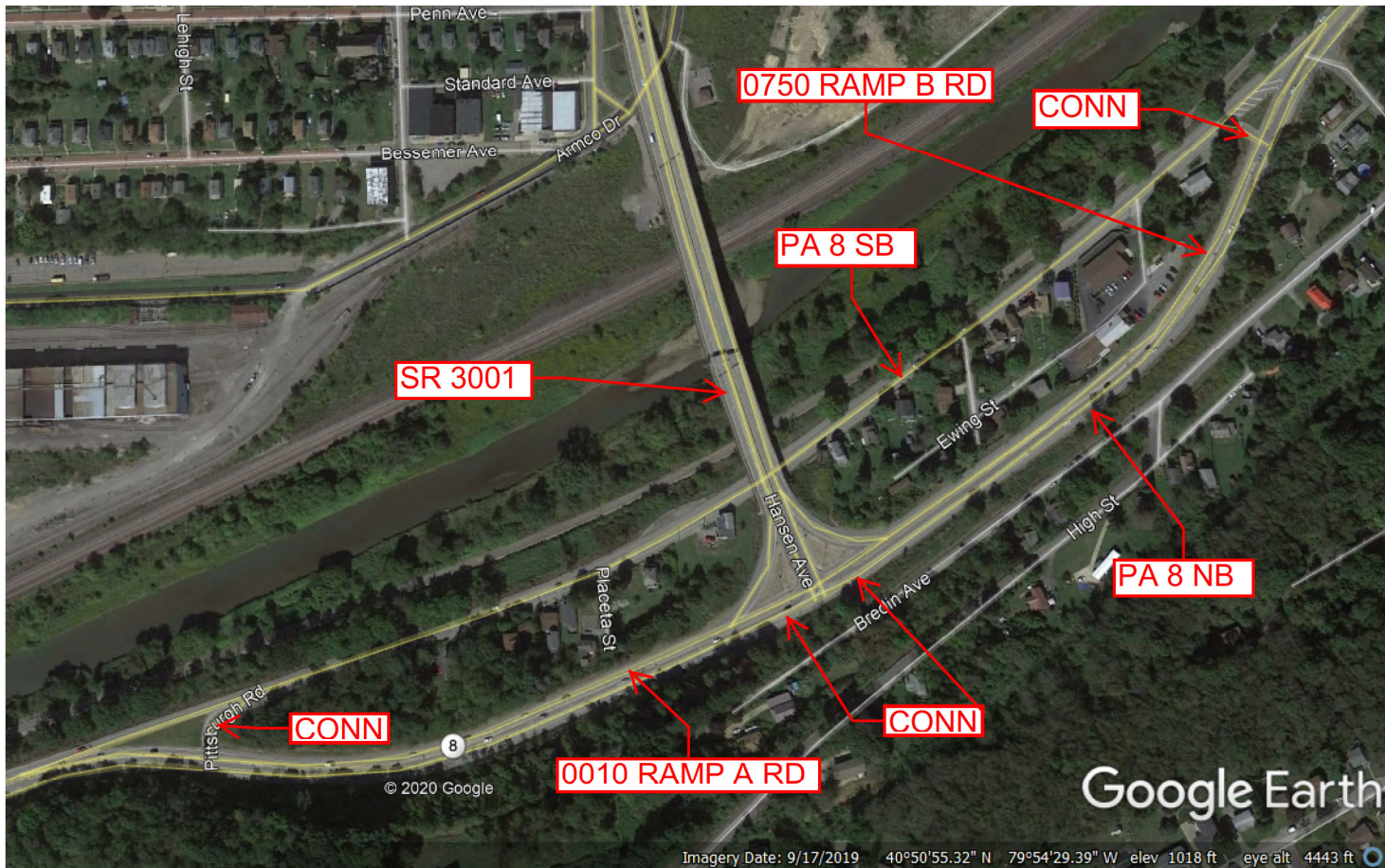
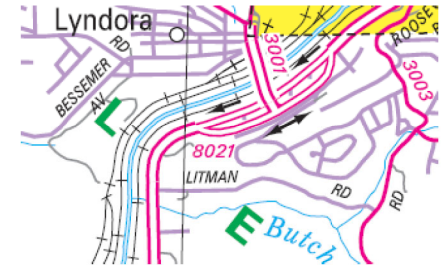
Ramp Segment Number and Ramp Segment Length Information:

Segment	Length	Segment	Length	Segment	Length	Segment	Length
0010	1595						
0750	1445						

Primary Route Interchange Exit Number

Secondary Route Interchange Exit Number

PennDOT Type 10 Map View:



Last Date Modified: May 23, 2023

County: 10

RMS Interchange Information

Print Form

Interchange Number: 8079

Bureau of Maintenance & Operations
Asset Management Division



Interchange Name: CRANBERRY CONN

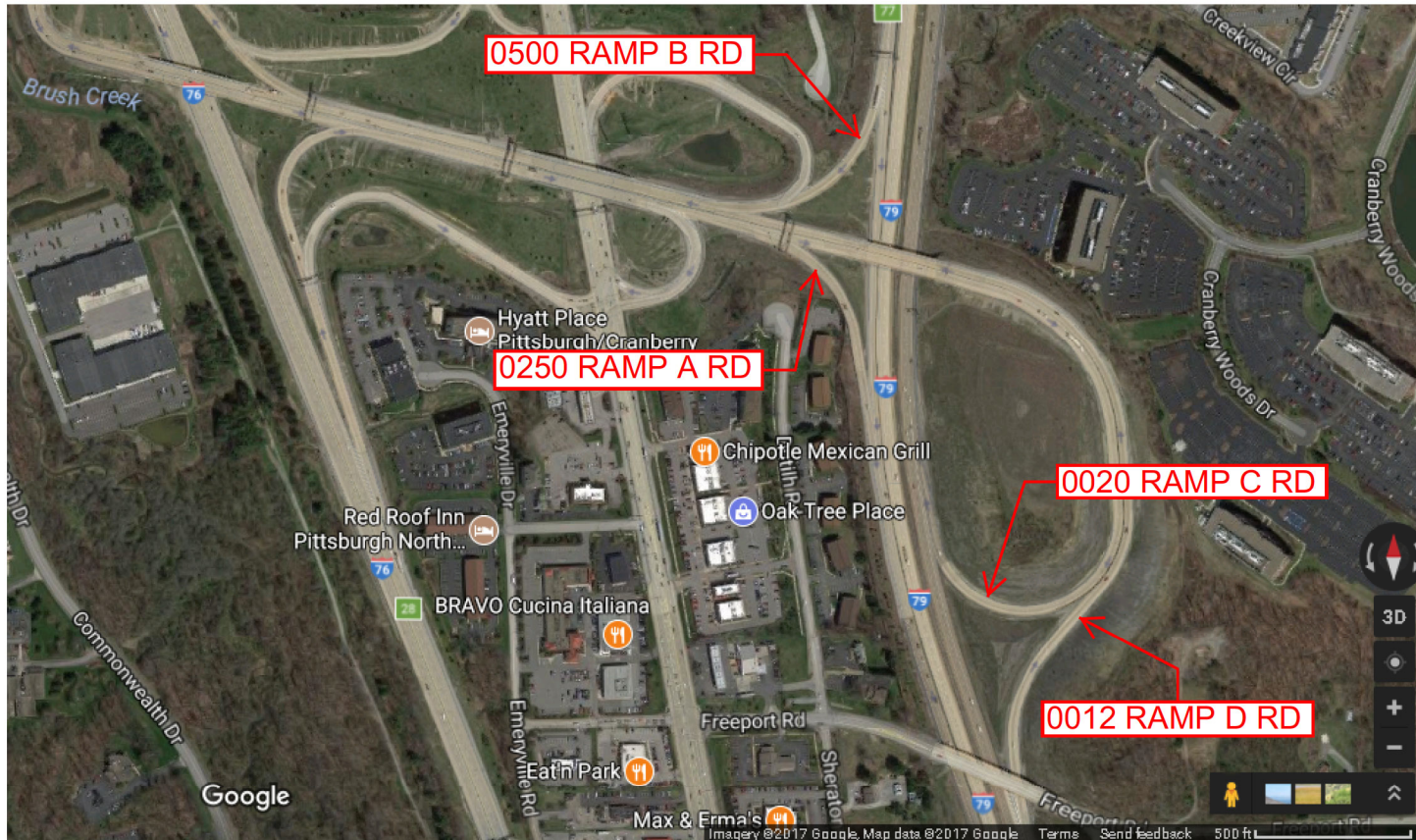
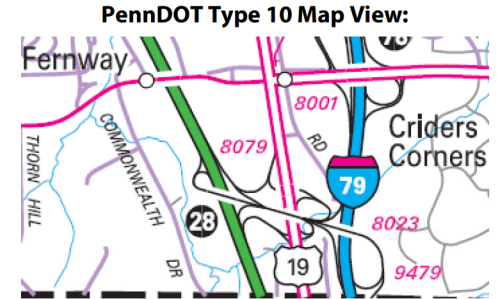
Intersecting SR's: I-79 and PA Turnpike

Ramp Segment Number and Ramp Segment Length Information:

Segment	Length	Segment	Length	Segment	Length	Segment	Length
0012	2079						
0020	2326						
0250	0455						
0500	0457						

Primary Route Interchange Exit Number: 28

Secondary Route Interchange Exit Number: 77



Last Date Modified: May 23, 2023

County: 10

RMS Interchange Information

Print Form

Interchange Number: 9102

Bureau of Maintenance & Operations
Asset Management Division



Interchange Name: WYE 9102

Intersecting SR's: SR 8 Main St & SR 308 West Sunbury Rd

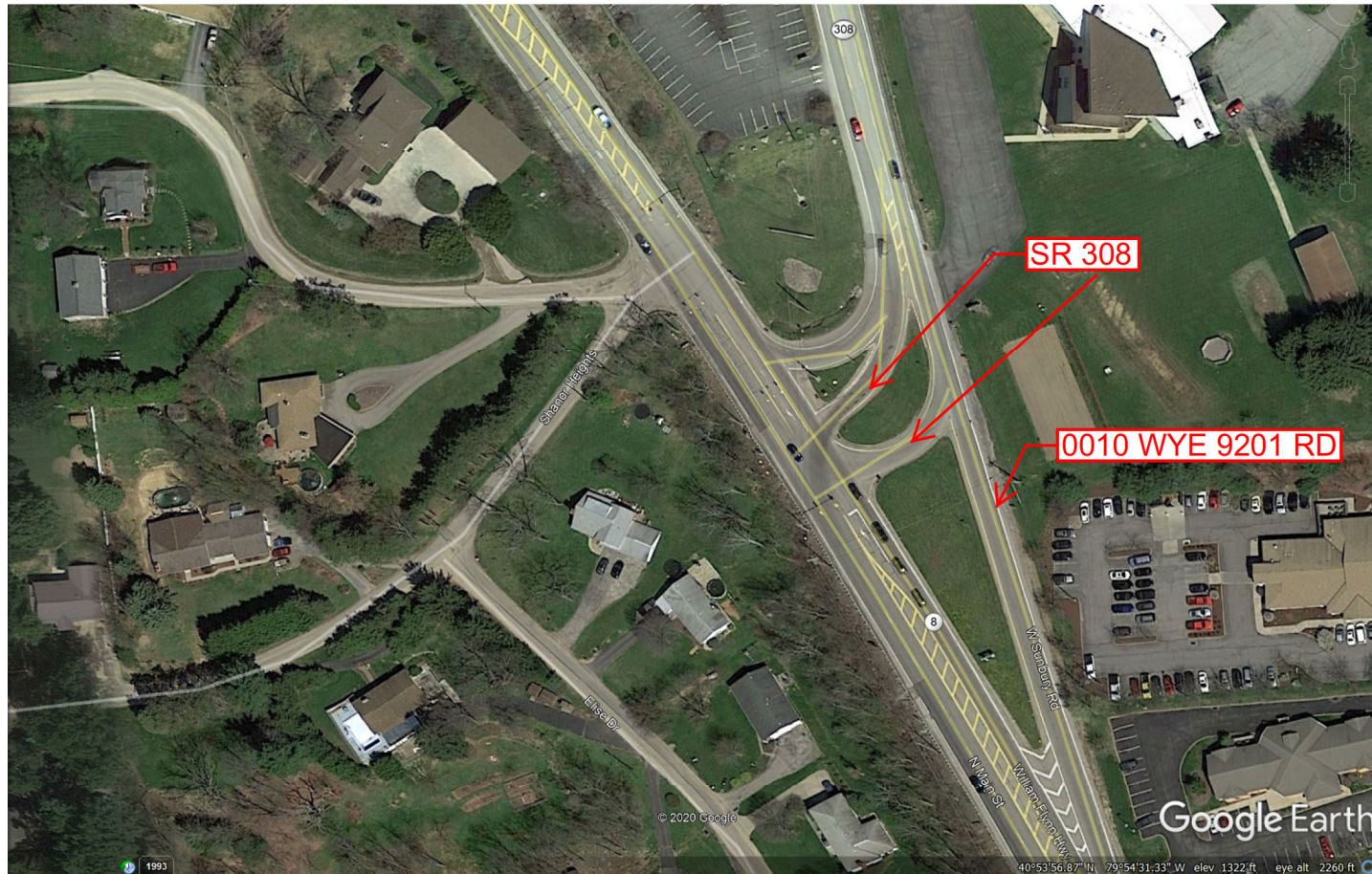
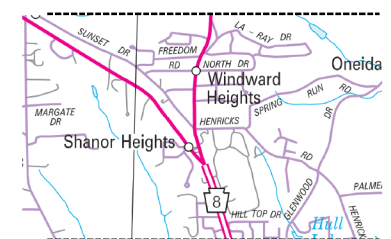
Ramp Segment Number and Ramp Segment Length Information:

Segment	Length	Segment	Length	Segment	Length	Segment	Length
0010	0262						

Primary Route Interchange Exit Number

Secondary Route Interchange Exit Number

PennDOT Type 10 Map View:



Google Earth

Last Date Modified: May 23, 2023

County: 10

RMS Interchange Information

Print Form

Interchange Number: 9201

Bureau of Maintenance & Operations
Asset Management Division



Interchange Name: RAYMOND P SHAFFER HW REST STOP

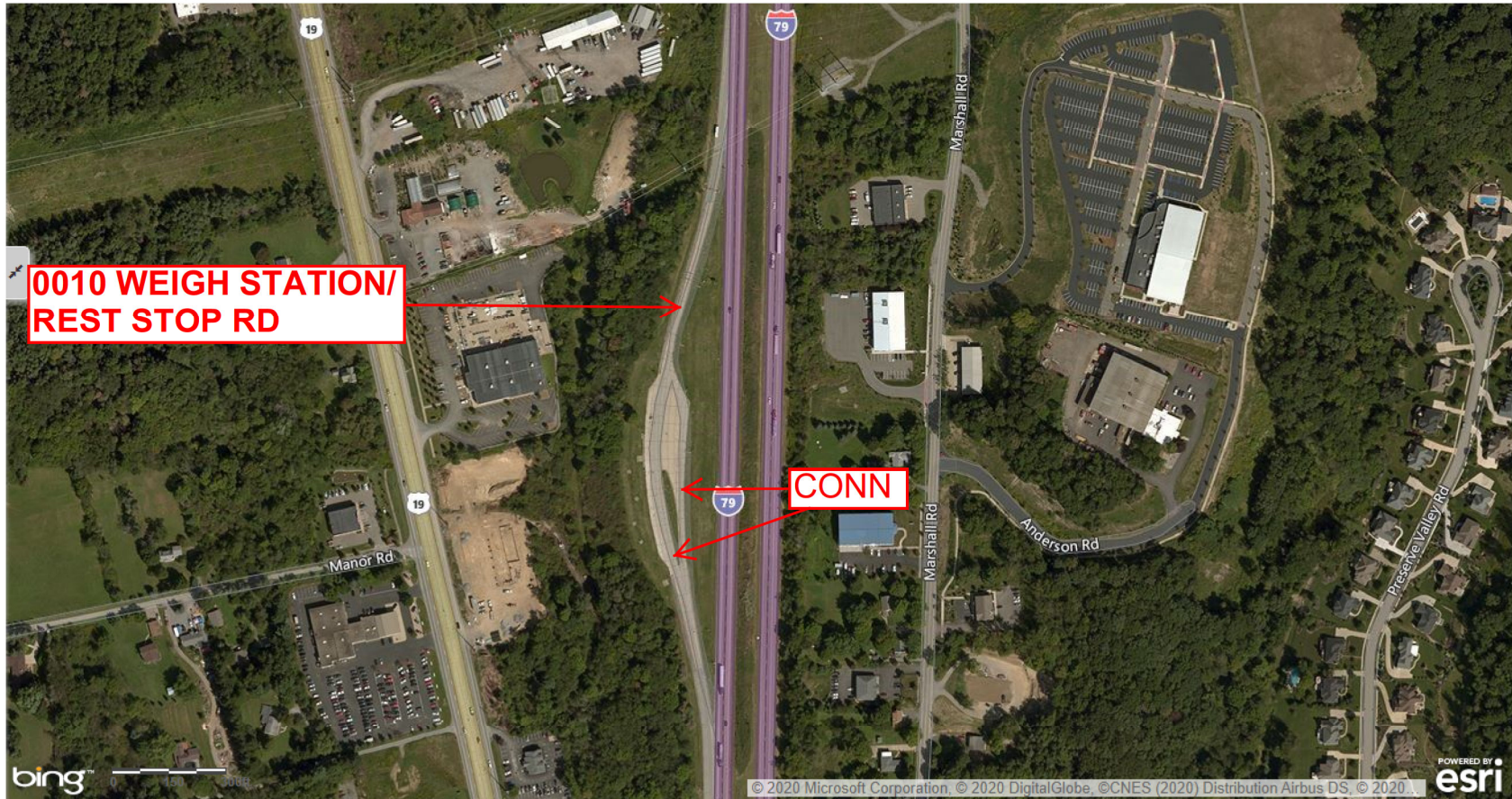
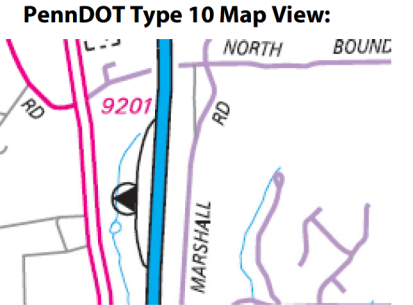
Intersecting SR's: I-79 Weight Station/Rest Stop Rd

Ramp Segment Number and Ramp Segment Length Information:

Segment	Length	Segment	Length	Segment	Length	Segment	Length
0010	1526						

Primary Route Interchange Exit Number

Secondary Route Interchange Exit Number



Last Date Modified:

May 23, 2023

County: 10

RMS Interchange Information

Print Form

Interchange Number: 9202

Bureau of Maintenance & Operations
Asset Management Division



Interchange Name: RAYMOND P SHAFFER HW REST STOP

Intersecting SR's: I-79 Weigh Station/Rest Stop Rd

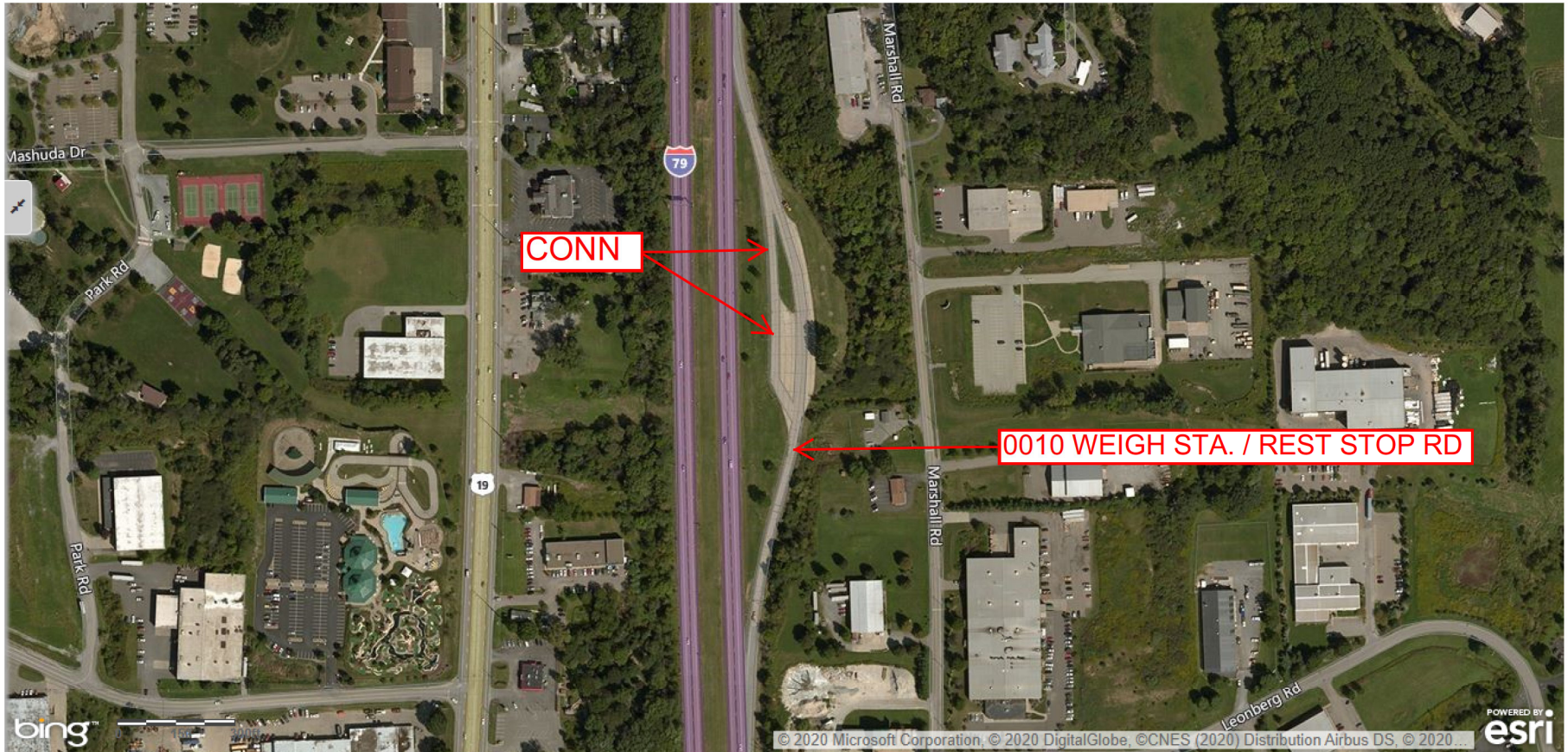
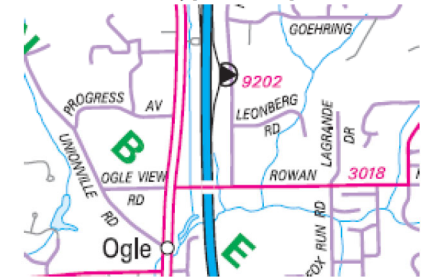
Ramp Segment Number and Ramp Segment Length Information:

Segment	Length	Segment	Length	Segment	Length	Segment	Length
0010	1436						

Primary Route Interchange Exit Number

Secondary Route Interchange Exit Number

PennDOT Type 10 Map View:



Last Date Modified:

May 23, 2023

County: 10

RMS Interchange Information

Print Form

Interchange Number: 9402

Bureau of Maintenance & Operations
Asset Management Division



Interchange Name:

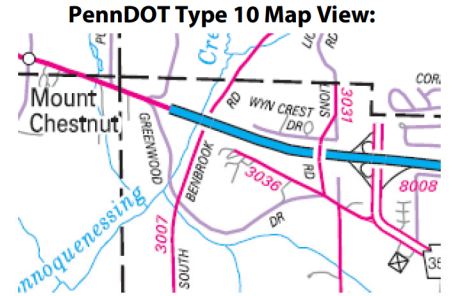
Intersecting SR's: SR 3036 Old New Castle Rd

Ramp Segment Number and Ramp Segment Length Information:

Segment	Length	Segment	Length	Segment	Length	Segment	Length
0010	0410						

Primary Route Interchange Exit Number

Secondary Route Interchange Exit Number



Last Date Modified: May 23, 2023

County: 10

RMS Interchange Information

Print Form

Interchange Number: 9404

Bureau of Maintenance & Operations
Asset Management Division



Interchange Name: SR 0068

Intersecting SR's: SR 0068

Ramp Segment Number and Ramp Segment Length Information:

Segment	Length	Segment	Length	Segment	Length	Segment	Length
0010	0260						

Primary Route
Interchange Exit
Number

Secondary Route
Interchange Exit
Number

PennDOT Type 10 Map View:



Last Date Modified:

May 23, 2023

County: 10

RMS Interchange Information

Print Form

Interchange Number: 9479

Bureau of Maintenance & Operations
Asset Management Division



Interchange Name: CRANBERRY COLLECTOR RD

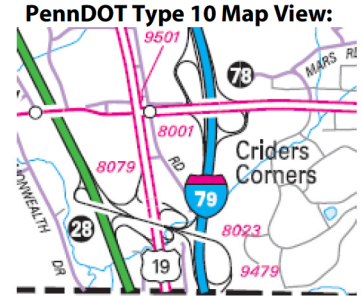
Intersecting SR's: I-79, PA Turnpike, PA 228 Mars Crider Rd, SR 8079, SR 8001

Ramp Segment Number and Ramp Segment Length Information:

Segment	Length	Segment	Length	Segment	Length	Segment	Length
0010	2377						
0020	1437						
0030	3281						

Primary Route Interchange Exit Number: 78

Secondary Route Interchange Exit Number: 28



Last Date Modified: May 23, 2023

County: 10

RMS Interchange Information

Print Form

Interchange Number: 9501

Bureau of Maintenance & Operations
Asset Management Division



Interchange Name: US 19 PARK-N-RIDE

Intersecting SR's: T326 Dutilh Rd

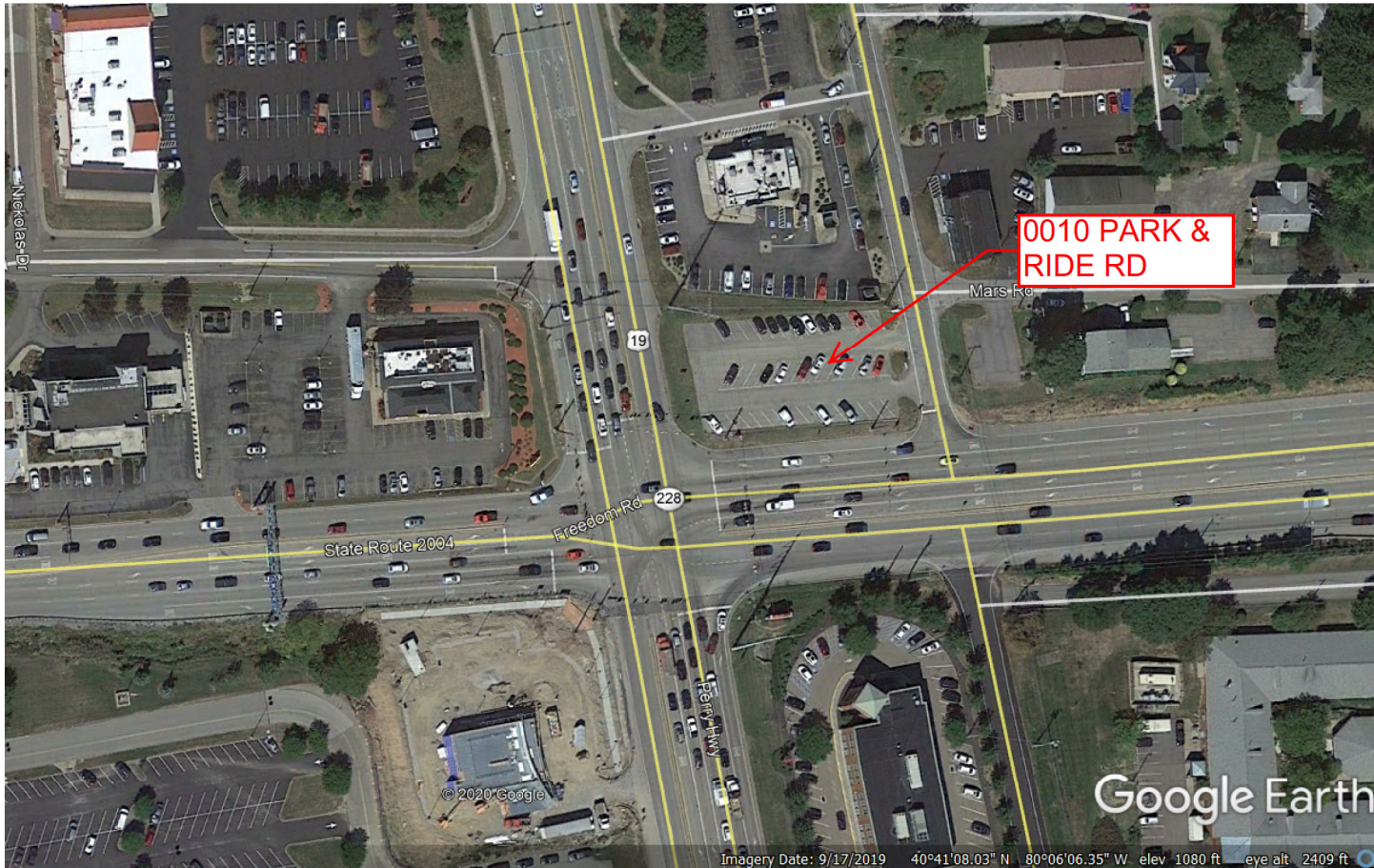
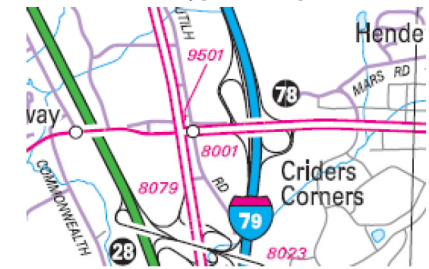
Ramp Segment Number and Ramp Segment Length Information:

Segment	Length	Segment	Length	Segment	Length	Segment	Length
0010	0189						

Primary Route
Interchange Exit
Number

Secondary Route
Interchange Exit
Number

PennDOT Type 10 Map View:



Last Date Modified:

May 23, 2023

County: 10

RMS Interchange Information

Print Form

Interchange Number: 9502

Bureau of Maintenance & Operations
Asset Management Division



Interchange Name: PARK-N-RIDE

Intersecting SR's: PA 528 Lindsay Rd

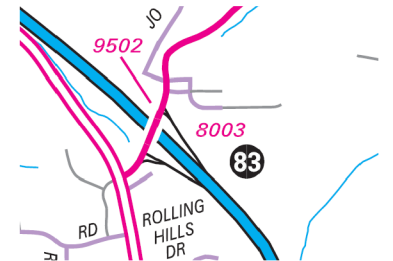
Ramp Segment Number and Ramp Segment Length Information:

Segment	Length	Segment	Length	Segment	Length	Segment	Length
0010	0235						

Primary Route Interchange Exit Number

Secondary Route Interchange Exit Number

PennDOT Type 10 Map View:



Last Date Modified: May 23, 2023

County: **10**

RMS Interchange Information

Print Form

Interchange Number: **9505**

Bureau of Maintenance & Operations
Asset Management Division



Interchange Name: **PARK-N-RIDE**

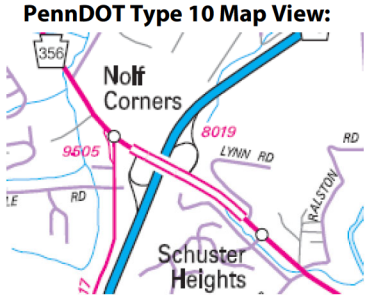
Intersecting SR's: **PA 356 South Pike Rd and SR 2017 Silverville Rd**

Ramp Segment Number and Ramp Segment Length Information:

Segment	Length	Segment	Length	Segment	Length	Segment	Length
0010	0510						

Primary Route Interchange Exit Number

Secondary Route Interchange Exit Number



Last Date Modified: **May 23, 2023**

County: 10

RMS Interchange Information

Print Form

Interchange Number: 9506

Bureau of Maintenance & Operations
Asset Management Division



Interchange Name: PA 488 PARK-N-RIDE

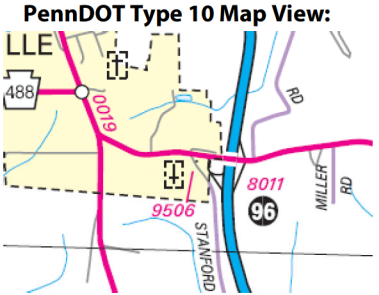
Intersecting SR's: T340 Stanford Rd

Ramp Segment Number and Ramp Segment Length Information:

Segment	Length	Segment	Length	Segment	Length	Segment	Length
0010	0216						

Primary Route
Interchange Exit
Number

Secondary Route
Interchange Exit
Number



Last Date Modified:

May 23, 2023

County: 10

RMS Interchange Information

Print Form

Interchange Number: 9507

Bureau of Maintenance & Operations
Asset Management Division



Interchange Name: PA 8 AND MAHARG RD PARK-N-RIDE

Intersecting SR's: T503 Maharg Rd

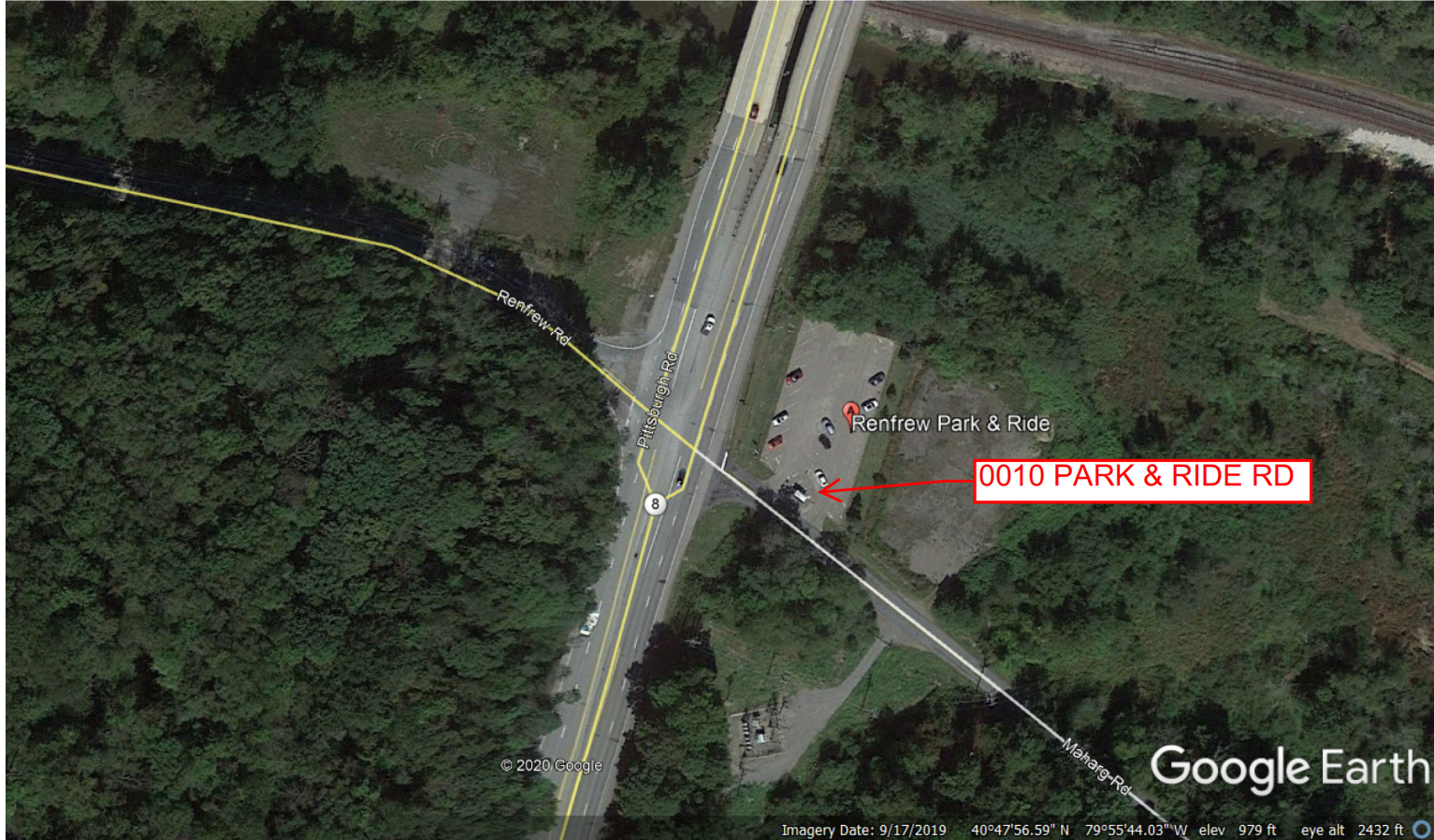
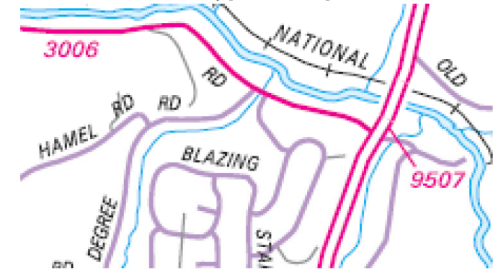
Ramp Segment Number and Ramp Segment Length Information:

Segment	Length	Segment	Length	Segment	Length	Segment	Length
0010	0173						

Primary Route Interchange Exit Number

Secondary Route Interchange Exit Number

PennDOT Type 10 Map View:



Google Earth

Imagery Date: 9/17/2019 40°47'56.59" N 79°55'44.03" W elev 979 ft eye alt 2432 ft

Last Date Modified:

May 23, 2023

County: 10

RMS Interchange Information

Print Form

Interchange Number: 9508

Bureau of Maintenance & Operations
Asset Management Division



Interchange Name: PA 19 PARK-N-RIDE

Intersecting SR's: US 19 Perry Hw

Ramp Segment Number and Ramp Segment Length Information:

Segment	Length	Segment	Length	Segment	Length	Segment	Length
0010	0750						

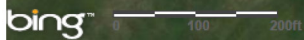
Primary Route
Interchange Exit
Number

Secondary Route
Interchange Exit
Number

PennDOT Type 10 Map View:



0010 PARK & RIDE RD



© 2020 Microsoft Corporation, © 2020 DigitalGlobe, ©CNES (2020) Distribution Airbus DS, © 2020 HERE



Last Date Modified:

May 23, 2023