

County: 16

RMS Interchange Information

Print Form

Interchange Number: 8002

Bureau of Maintenance & Operations
Asset Management Division



Interchange Name: SAINT PETERSBURG

Intersecting SR's: I-80, PA 38 and PA 478

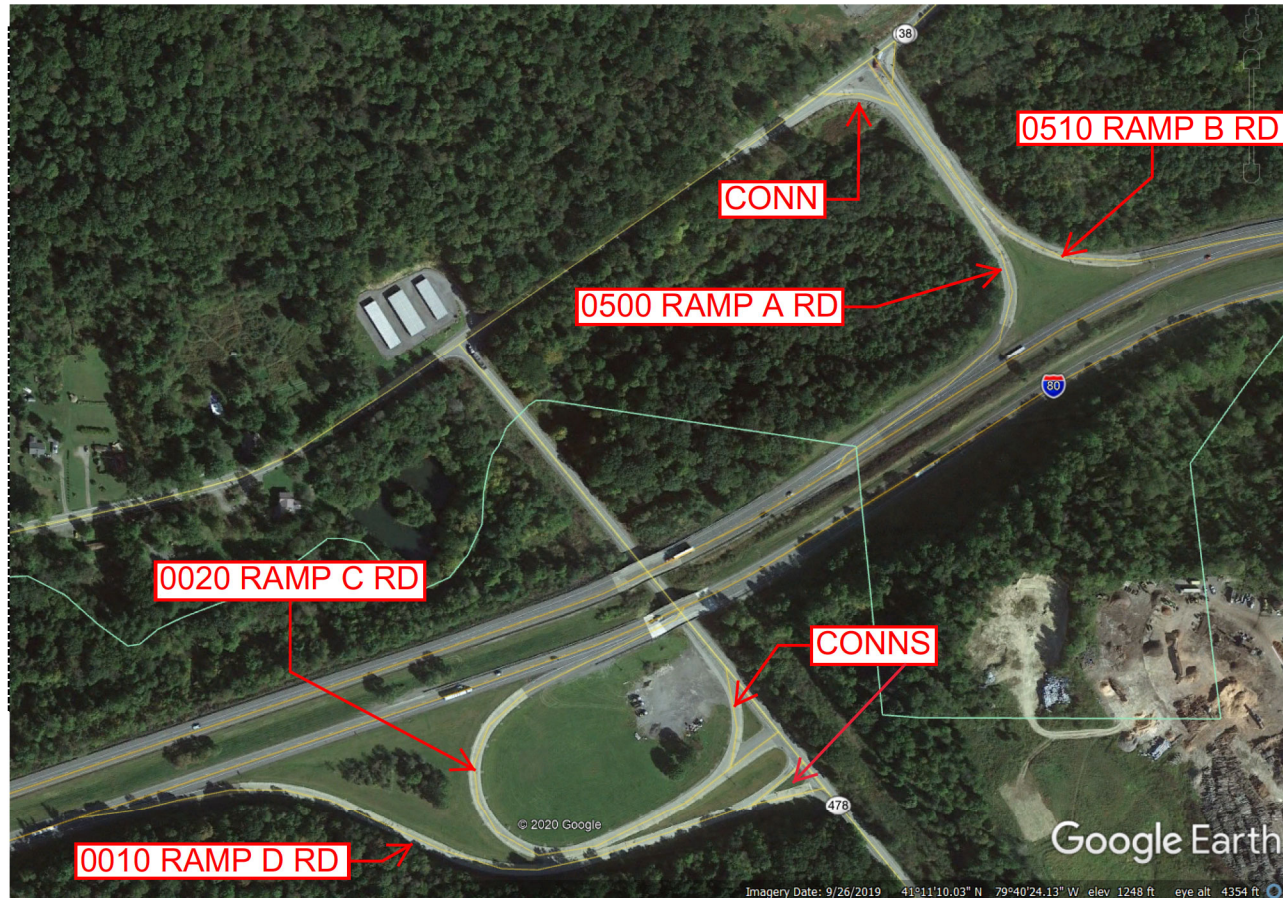
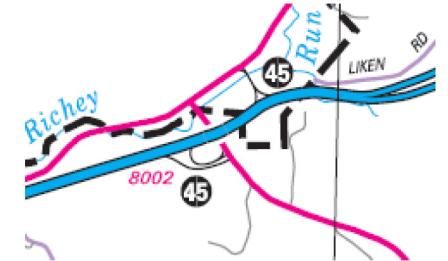
Ramp Segment Number and Ramp Segment Length Information:

Segment	Length	Segment	Length	Segment	Length	Segment	Length
0010	1535						
0020	1274						
0500	0829						
0510	0942						

Primary Route Interchange Exit Number: 45

Secondary Route Interchange Exit Number

PennDOT Type 10 Map View:



Last Date Modified: May 23, 2023

County: 16

RMS Interchange Information

Print Form

Interchange Number: 8004

Bureau of Maintenance & Operations
Asset Management Division



Interchange Name: KNOX

Intersecting SR's: I-80 and SR 3007 Canoe Ripple Rd

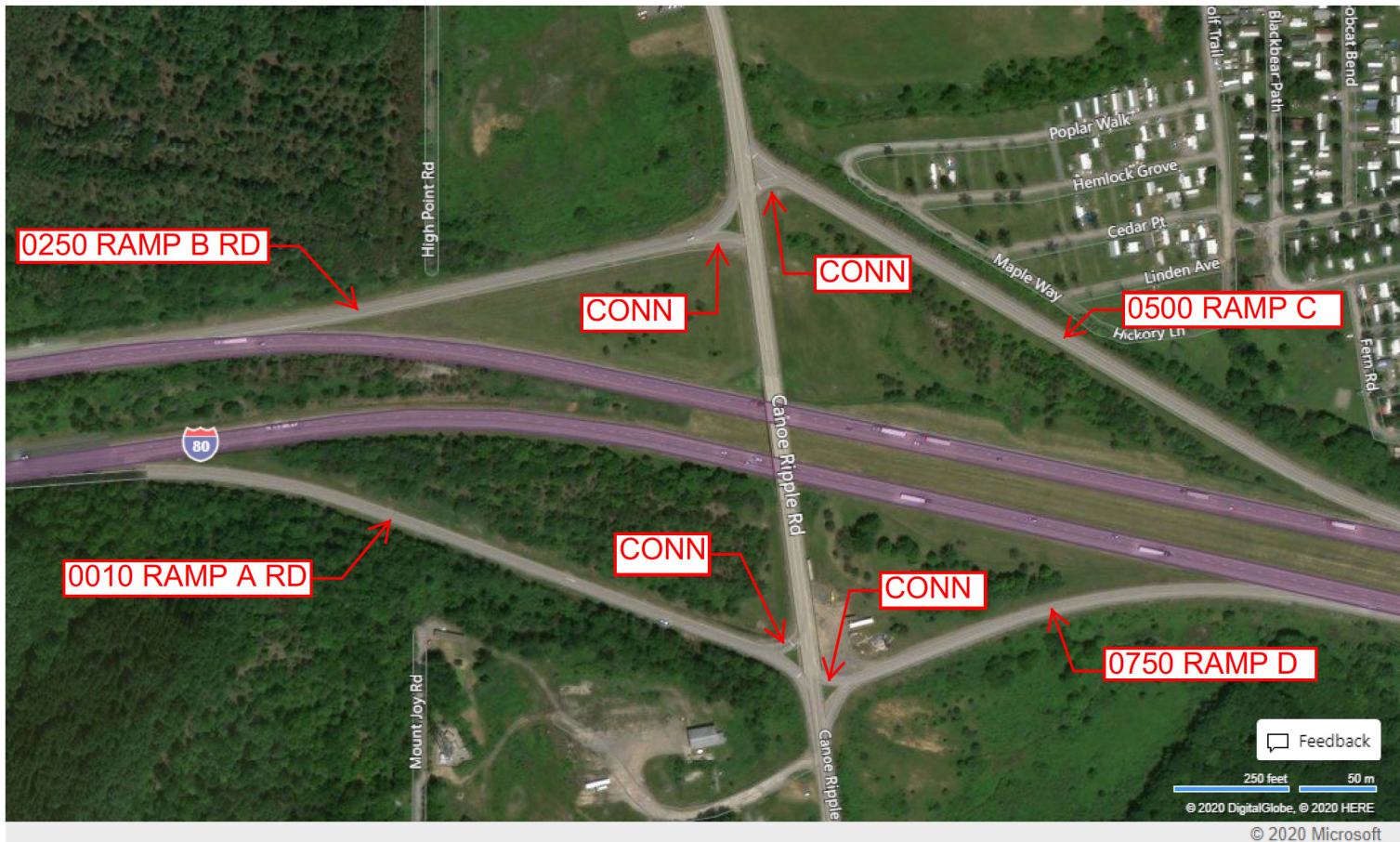
Ramp Segment Number and Ramp Segment Length Information:

Segment	Length	Segment	Length	Segment	Length	Segment	Length
0010	1591						
0250	1080						
0500	1658						
0750	1056						

Primary Route Interchange Exit Number: 53

Secondary Route Interchange Exit Number

PennDOT Type 10 Map View:



Feedback
250 feet 50 m
© 2020 DigitalGlobe, © 2020 HERE
© 2020 Microsoft

Last Date Modified: May 23, 2023

County: 16

RMS Interchange Information

Print Form

Interchange Number: 8006

Bureau of Maintenance & Operations
Asset Management Division



Interchange Name: SHIPPENVILLE

Intersecting SR's: I-80 and PA 66

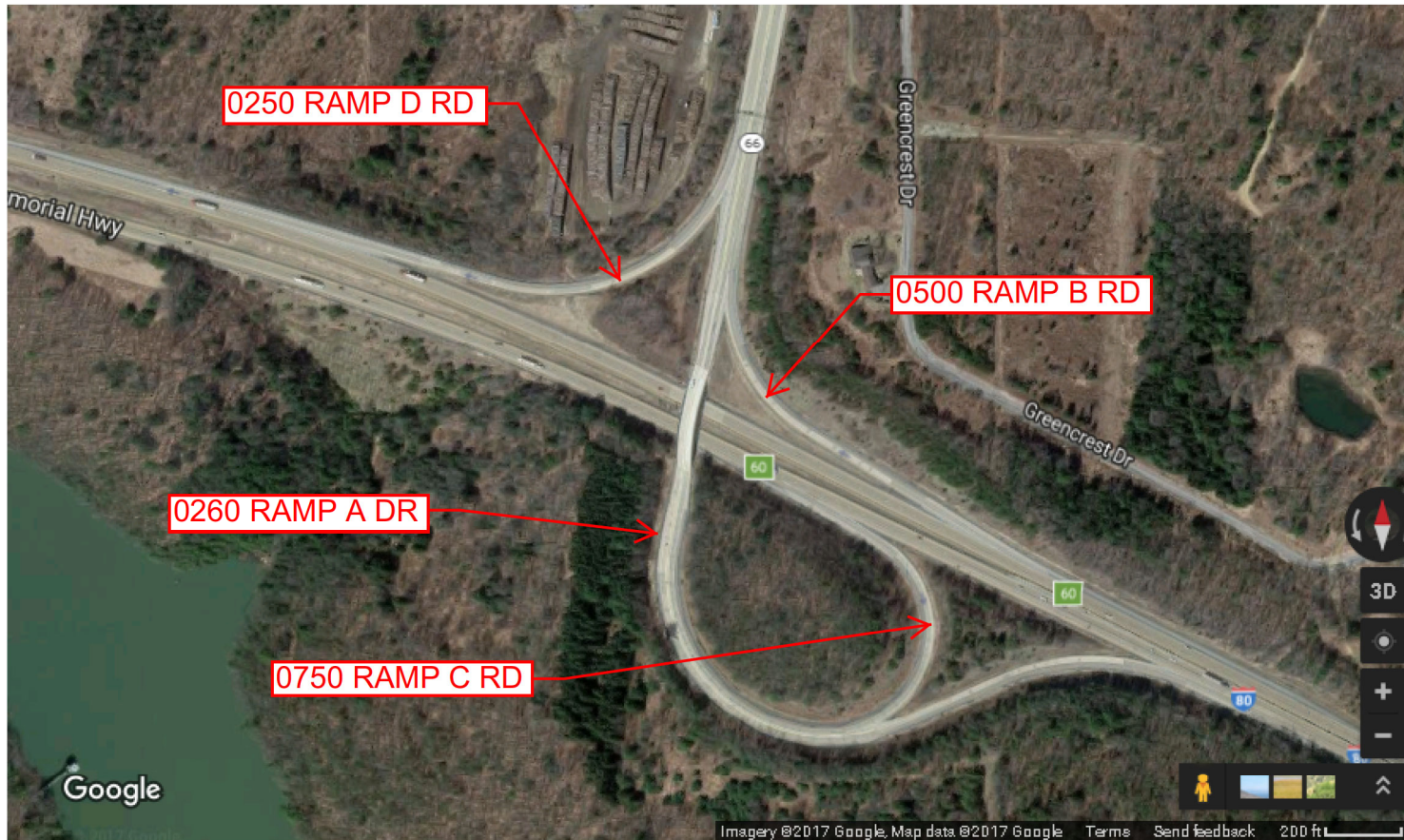
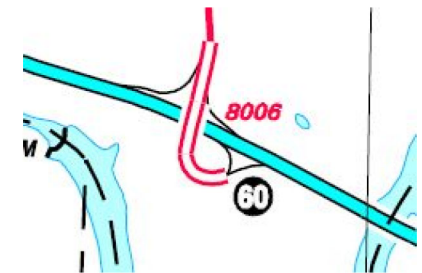
Ramp Segment Number and Ramp Segment Length Information:

Segment	Length	Segment	Length	Segment	Length	Segment	Length
0250	0959						
0260	3191						
0500	0762						
0750	3033						

Primary Route Interchange Exit Number: 60

Secondary Route Interchange Exit Number:

PennDOT Type 10 Map View:



Last Date Modified: May 23, 2023

County: 16

RMS Interchange Information

Print Form

Interchange Number: 8008

Bureau of Maintenance & Operations
Asset Management Division



Interchange Name: CLARION

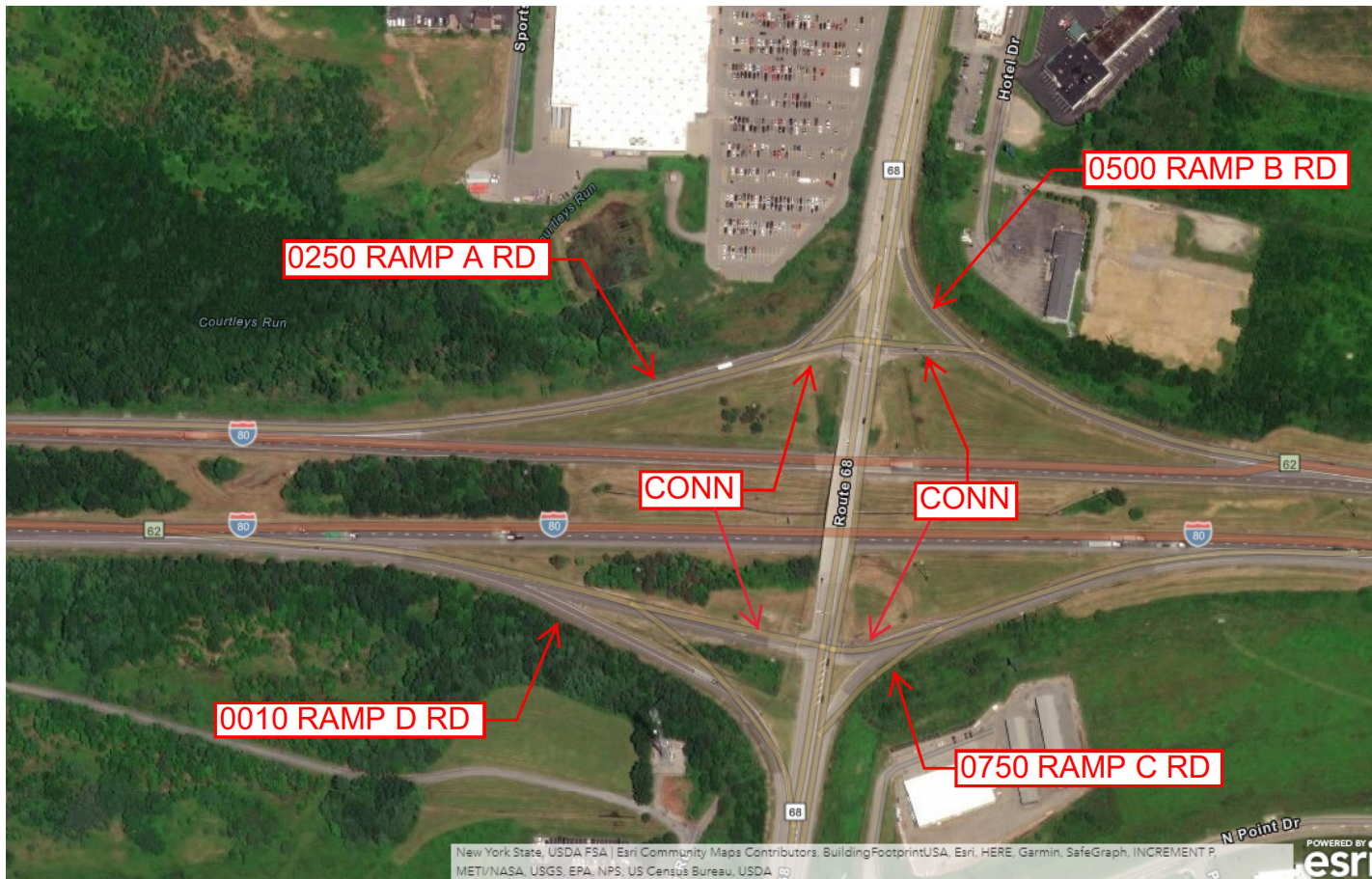
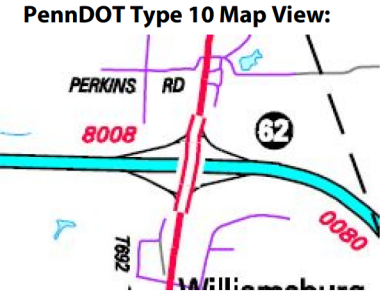
Intersecting SR's: I-80 and PA 68

Ramp Segment Number and Ramp Segment Length Information:

Segment	Length	Segment	Length	Segment	Length	Segment	Length
0010	1155						
0250	1118						
0500	0978						
0750	0927						

Primary Route Interchange Exit Number: 62

Secondary Route Interchange Exit Number



Last Date Modified: May 23, 2023

County: 16

RMS Interchange Information

Print Form

Interchange Number: 8010

Bureau of Maintenance & Operations
Asset Management Division



Interchange Name: NEW BETHLEHEM

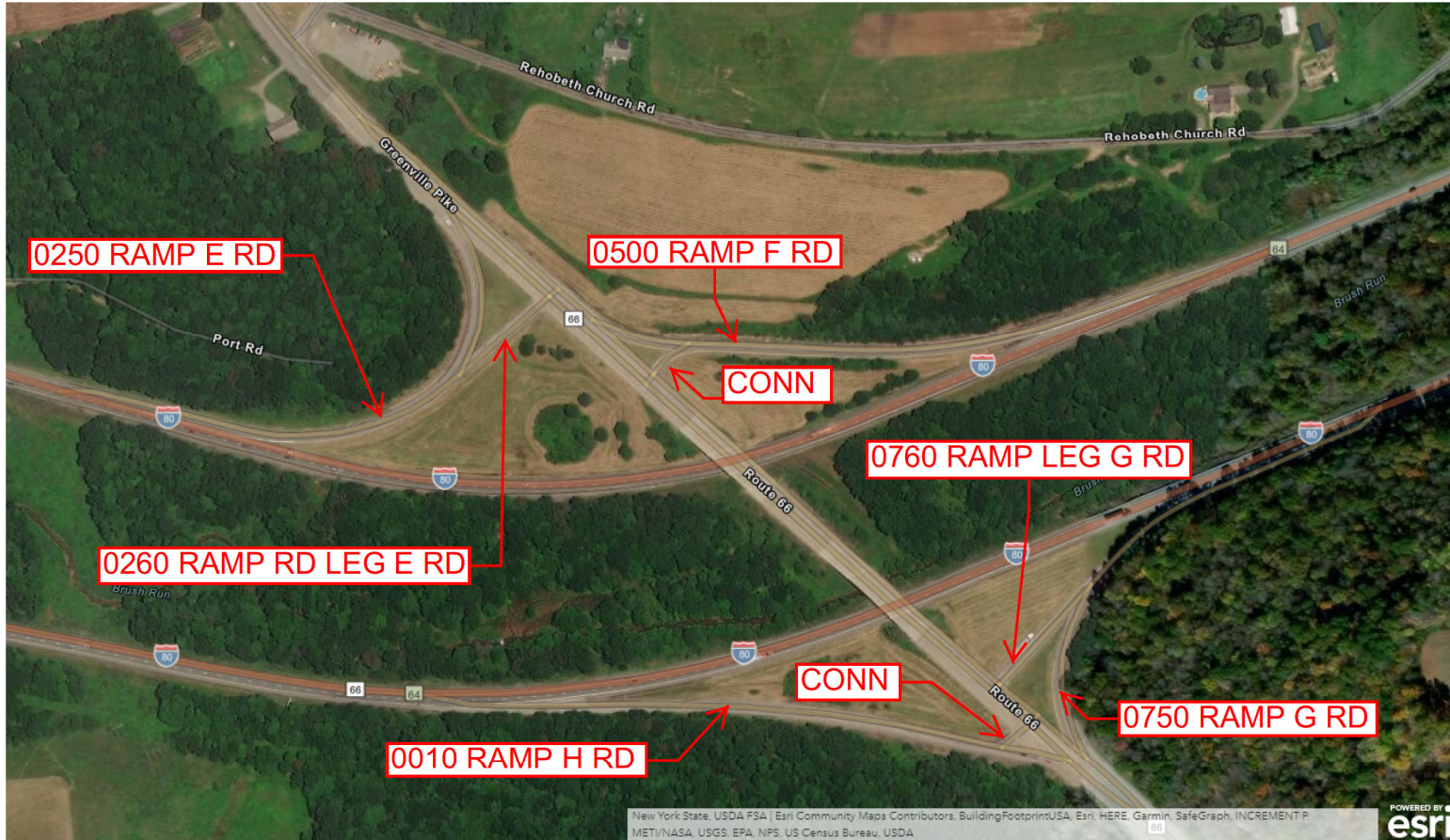
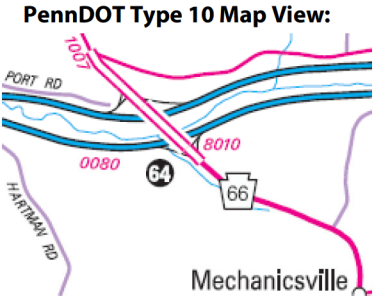
Intersecting SR's: I-80, PA 66 and SR 1007 Greenville Pk

Ramp Segment Number and Ramp Segment Length Information:

Segment	Length	Segment	Length	Segment	Length	Segment	Length
0010	1210	0760	0260				
0250	0894						
0260	0228						
0500	1121						
0750	0721						

Primary Route Interchange Exit Number: 64

Secondary Route Interchange Exit Number



Last Date Modified:

May 23, 2023

County: 16

RMS Interchange Information

Print Form

Interchange Number: 8012

Bureau of Maintenance & Operations
Asset Management Division



Interchange Name: STRATTENVILLE

Intersecting SR's: I-80 and US 322

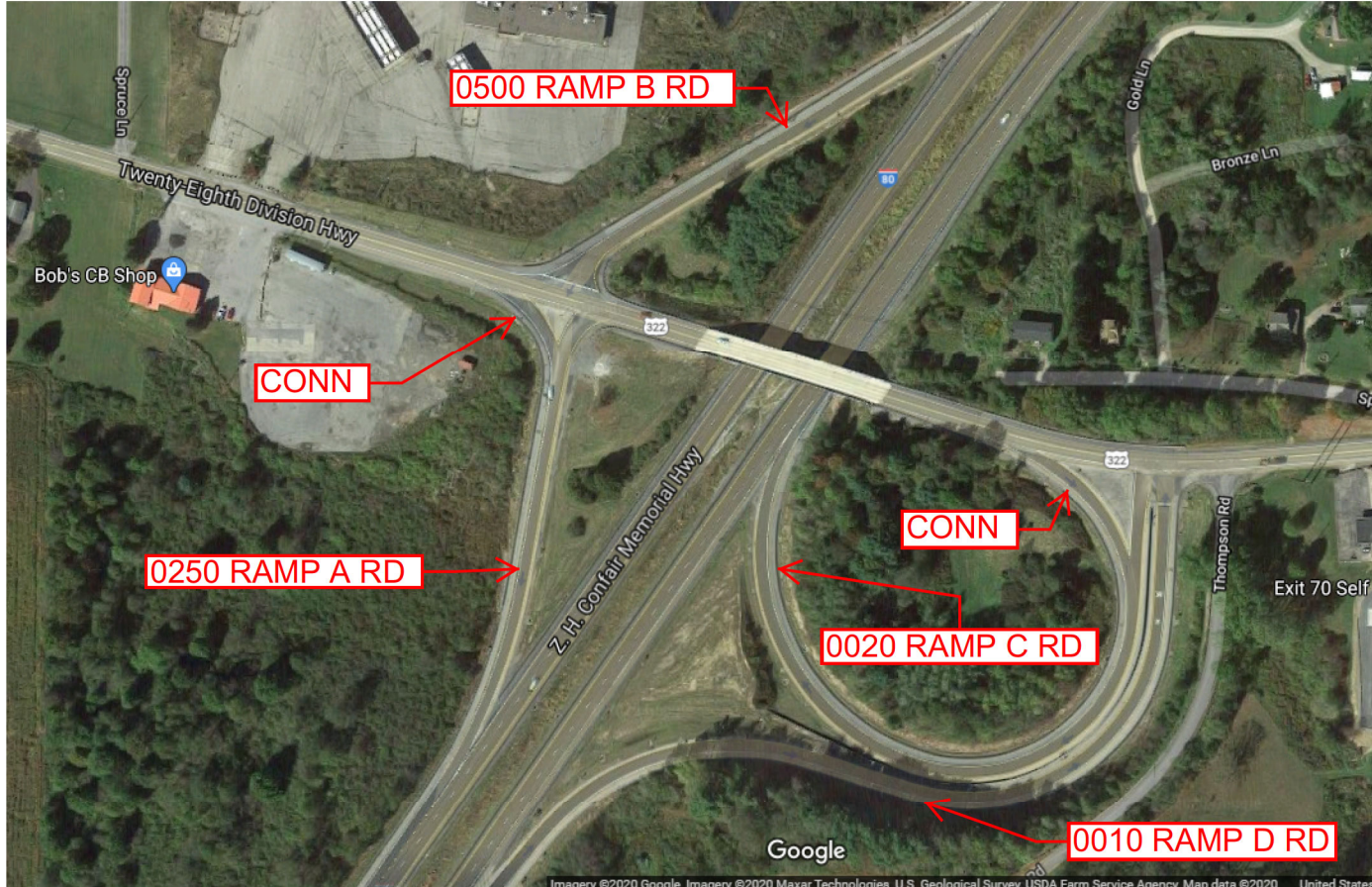
Ramp Segment Number and Ramp Segment Length Information:

Segment	Length	Segment	Length	Segment	Length	Segment	Length
0010	1331						
0020	1066						
0250	0558						
0500	0681						

Primary Route Interchange Exit Number: 70

Secondary Route Interchange Exit Number

PennDOT Type 10 Map View:



Last Date Modified: May 23, 2023

County: 16

RMS Interchange Information

Print Form

Interchange Number: 9102

Bureau of Maintenance & Operations
Asset Management Division



Interchange Name: WYE RD

Intersecting SR's: US 322 Twentyeighth Division Hw & PA 66 Paint Bl

Ramp Segment Number and Ramp Segment Length Information:

Segment	Length	Segment	Length	Segment	Length	Segment	Length
0010	0239						

Primary Route Interchange Exit Number

Secondary Route Interchange Exit Number

PennDOT Type 10 Map View:



Feedback

200 ft 50 m
© 2024 TomTom, © Vexcel Imaging

© 2024 Microsoft

Last Date Modified:

Apr 24, 2024

County: 16

RMS Interchange Information

Print Form

Interchange Number: 9104

Bureau of Maintenance & Operations
Asset Management Division



Interchange Name: WYE RD

Intersecting SR's: PA 157 SH & PA 208

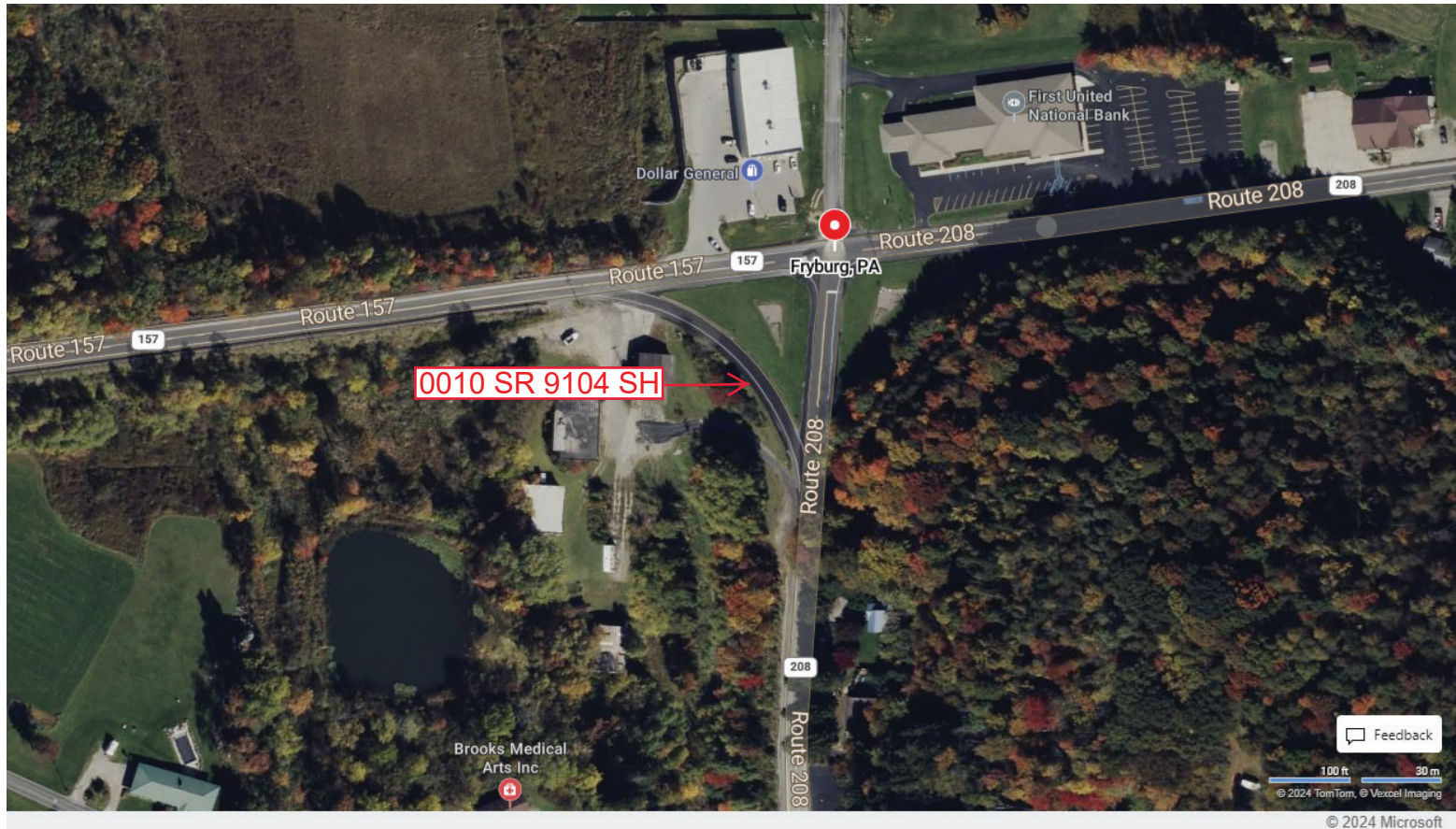
Ramp Segment Number and Ramp Segment Length Information:

Segment	Length	Segment	Length	Segment	Length	Segment	Length
0010	0246						

Primary Route Interchange Exit Number

Secondary Route Interchange Exit Number

PennDOT Type 10 Map View:



Last Date Modified: Apr 24, 2024

County: 16

RMS Interchange Information

Print Form

Interchange Number: 9106

Bureau of Maintenance & Operations
Asset Management Division



Interchange Name: WYE RD

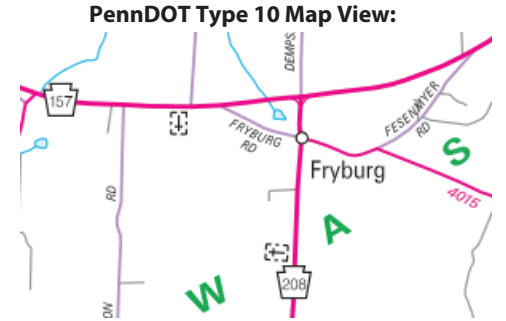
Intersecting SR's: PA 157 SH & PA 208 SH

Ramp Segment Number and Ramp Segment Length Information:

Segment	Length	Segment	Length	Segment	Length	Segment	Length
0010	0264						

Primary Route Interchange Exit Number

Secondary Route Interchange Exit Number



Last Date Modified: Apr 24, 2024

County: 16

RMS Interchange Information

Print Form

Interchange Number: 9202

Bureau of Maintenance & Operations
Asset Management Division



Interchange Name: I-80 WEIGHT STATION

Intersecting SR's: I-80 Weigh Station East Rd

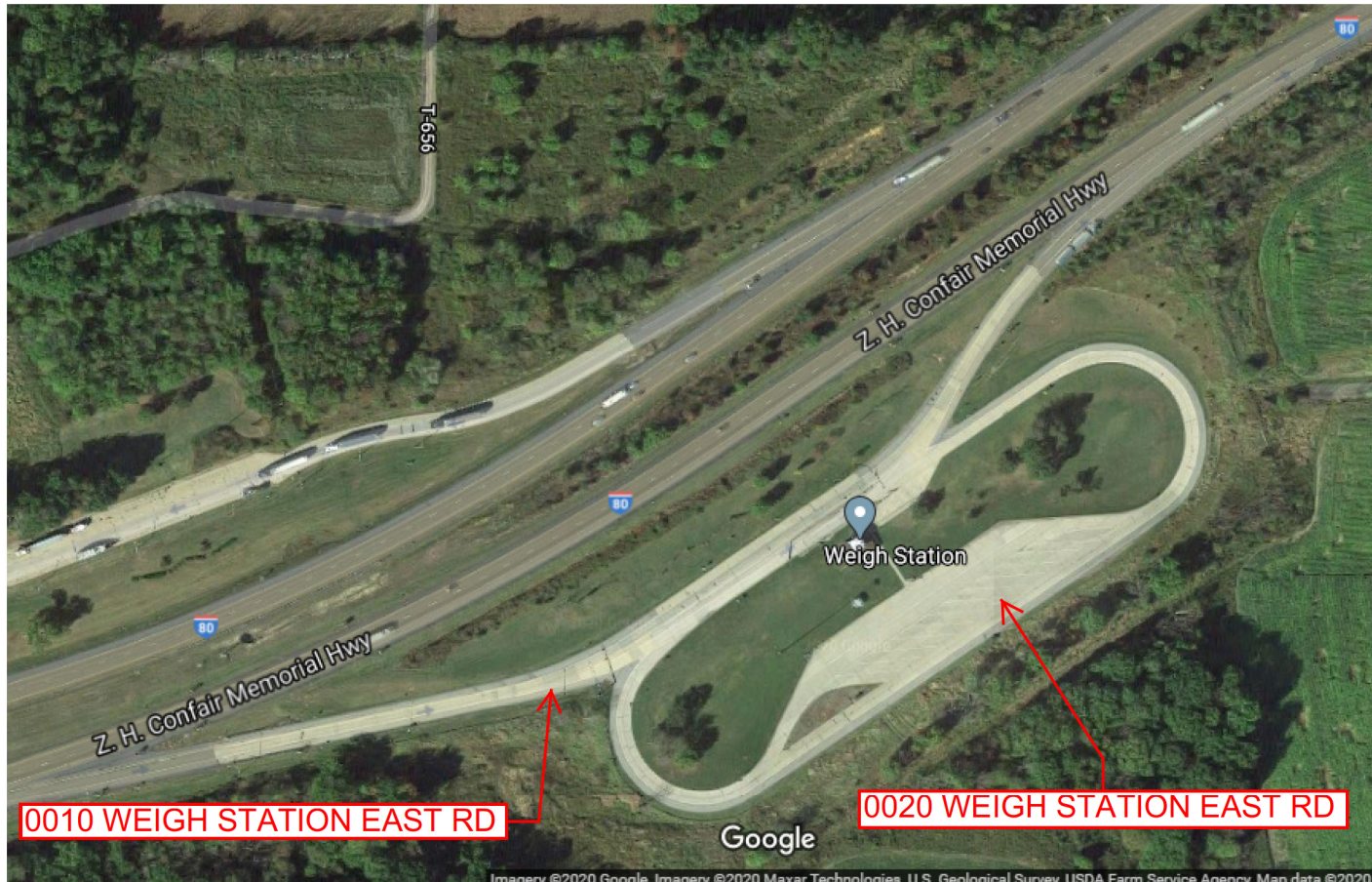
Ramp Segment Number and Ramp Segment Length Information:

Segment	Length	Segment	Length	Segment	Length	Segment	Length
0010	1620						
0020	1575						

Primary Route Interchange Exit Number

Secondary Route Interchange Exit Number

PennDOT Type 10 Map View:



0010 WEIGH STATION EAST RD

0020 WEIGH STATION EAST RD

Last Date Modified: May 23, 2023

County: 16

RMS Interchange Information

Print Form

Interchange Number: 9203

Bureau of Maintenance & Operations
Asset Management Division



Interchange Name: I-80 WEIGH STATION WEST

Intersecting SR's: I-80 Weigh Station West Rd

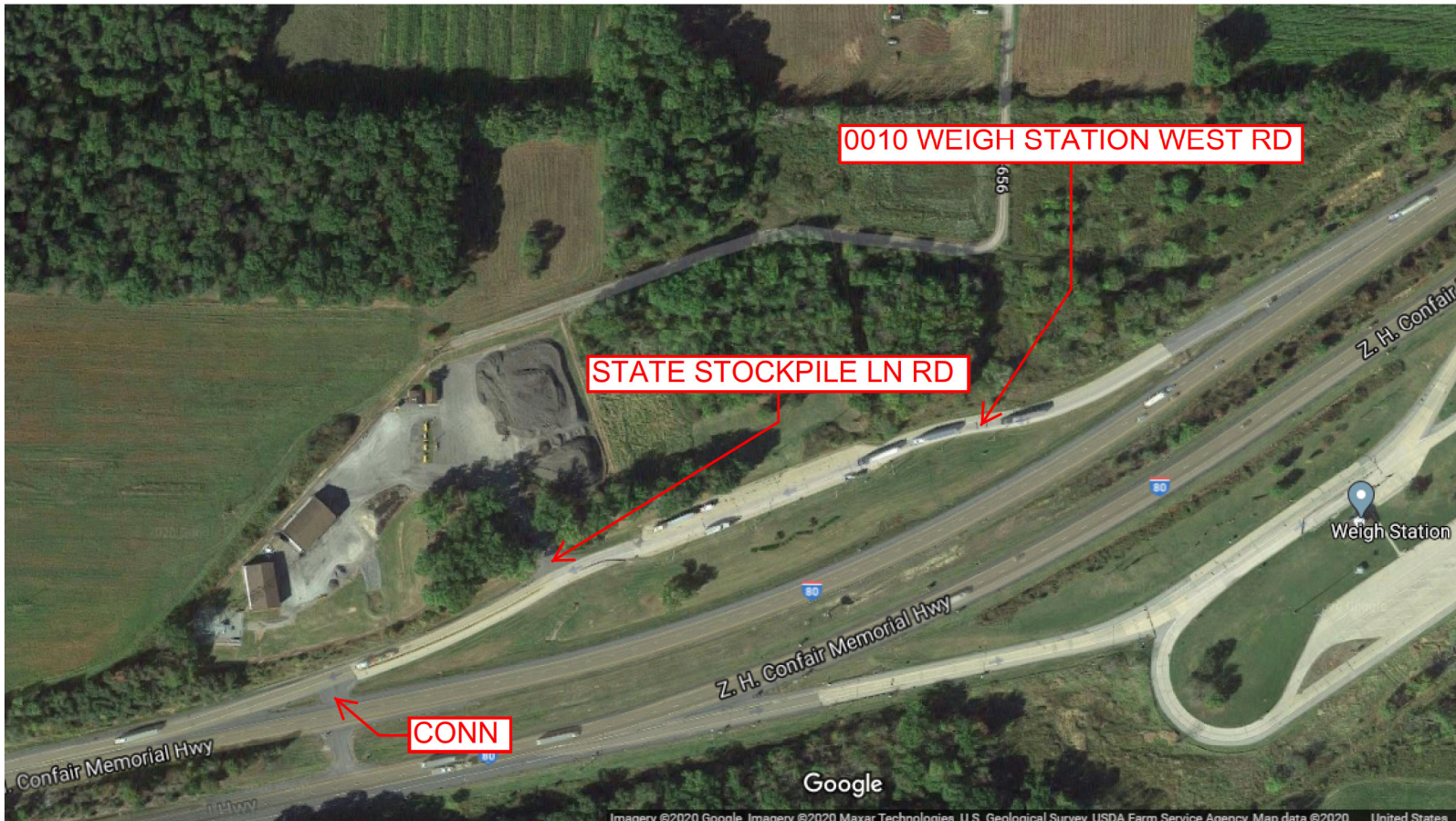
Ramp Segment Number and Ramp Segment Length Information:

Segment	Length	Segment	Length	Segment	Length	Segment	Length
0010	1862						

Primary Route
Interchange Exit
Number

Secondary Route
Interchange Exit
Number

PennDOT Type 10 Map View:



Last Date Modified:

May 23, 2023

County: 16

RMS Interchange Information

Print Form

Interchange Number: 9401

Bureau of Maintenance & Operations
Asset Management Division



Interchange Name: PA 68 TRUCK LN

Intersecting SR's: PA 68 Truck Stop Rd

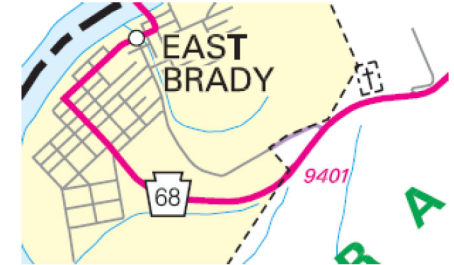
Ramp Segment Number and Ramp Segment Length Information:

Segment	Length	Segment	Length	Segment	Length	Segment	Length
0010	0339						

Primary Route Interchange Exit Number

Secondary Route Interchange Exit Number

PennDOT Type 10 Map View:



bing 0 30 60ft

© 2020 Microsoft Corporation, © 2020 DigitalGlobe, ©CNES (2020) Distribution Airb...

POWERED BY esri

Last Date Modified: May 23, 2023