

County: **33**

RMS Interchange Information

Print Form

Interchange Number: **8002**

Bureau of Maintenance & Operations
Asset Management Division



Interchange Name: **CORISICA**

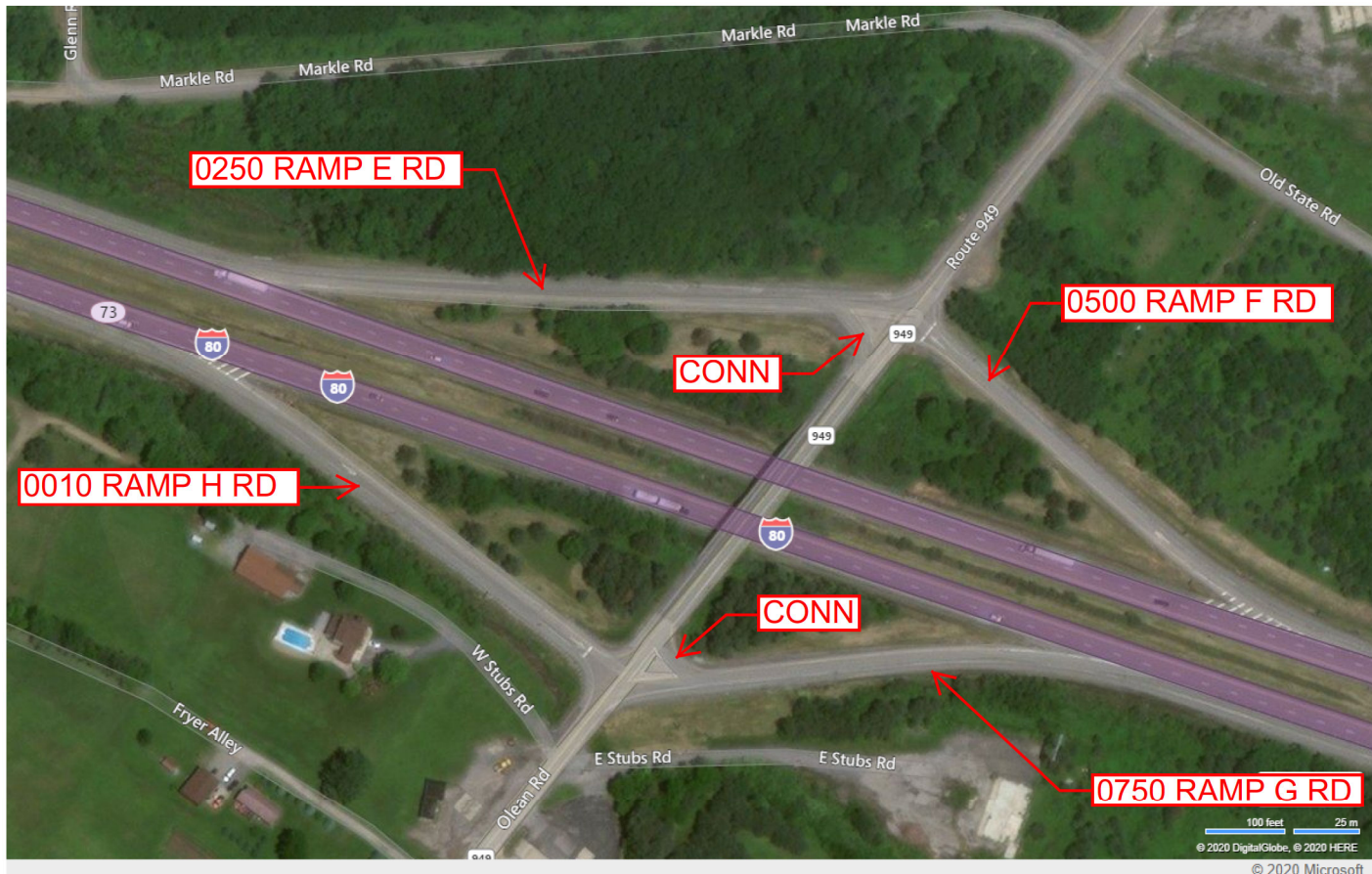
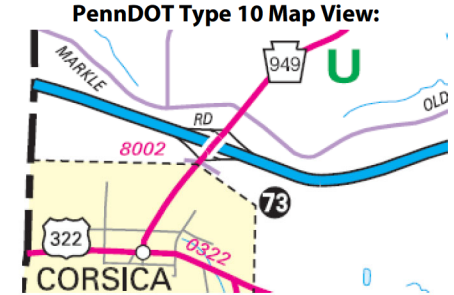
Intersecting SR's: **I-80 Keystone Shortway Rd & PA 949 Allegheny St**

Ramp Segment Number and Ramp Segment Length Information:

Segment	Length	Segment	Length	Segment	Length	Segment	Length
0010	0607						
0250	0771						
0500	0546						
0750	0532						

Primary Route Interchange Exit Number: **73**

Secondary Route Interchange Exit Number:



100 feet 25 m
© 2020 DigitalGlobe, © 2020 HERE
© 2020 Microsoft

Last Date Modified: **Jun 9, 2023**

County: 33

RMS Interchange Information

Print Form

Interchange Number: 8004

Bureau of Maintenance & Operations
Asset Management Division



Interchange Name: BROOKVILLE

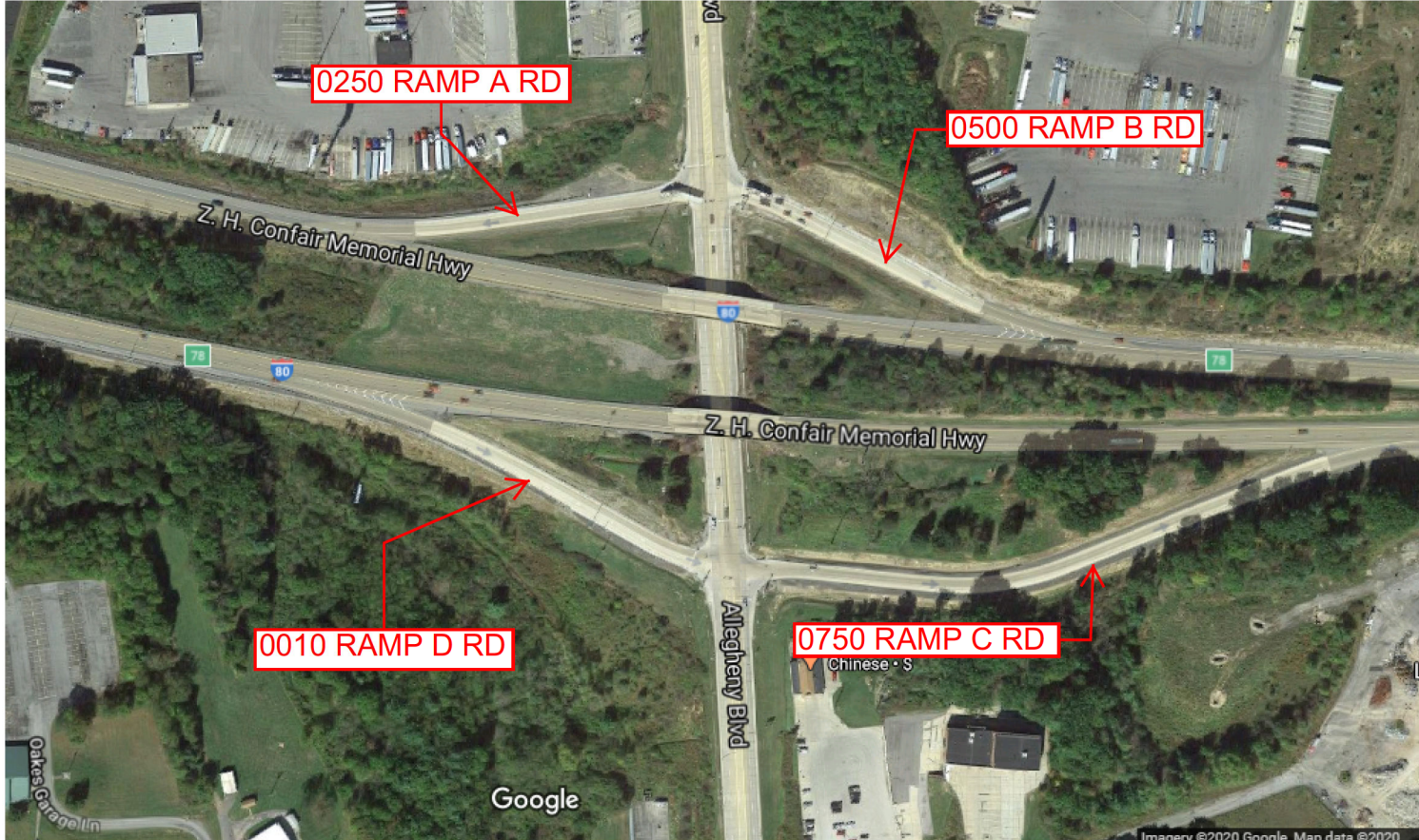
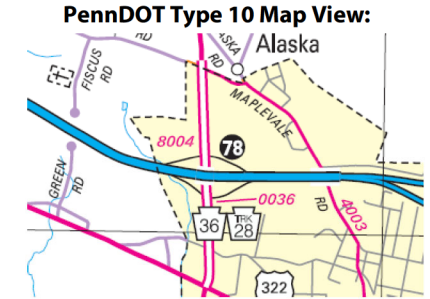
Intersecting SR's: I-80 Keystone Shortway Rd & PA 36 Allegheny Bl

Ramp Segment Number and Ramp Segment Length Information:

Segment	Length	Segment	Length	Segment	Length	Segment	Length
0010	0586						
0250	0499						
0500	0524						
0750	1040						

Primary Route Interchange Exit Number: 78

Secondary Route Interchange Exit Number:



Last Date Modified: Jun 9, 2023

County: 33

RMS Interchange Information

Print Form

Interchange Number: 8006

Bureau of Maintenance & Operations
Asset Management Division



Interchange Name: HAZEN

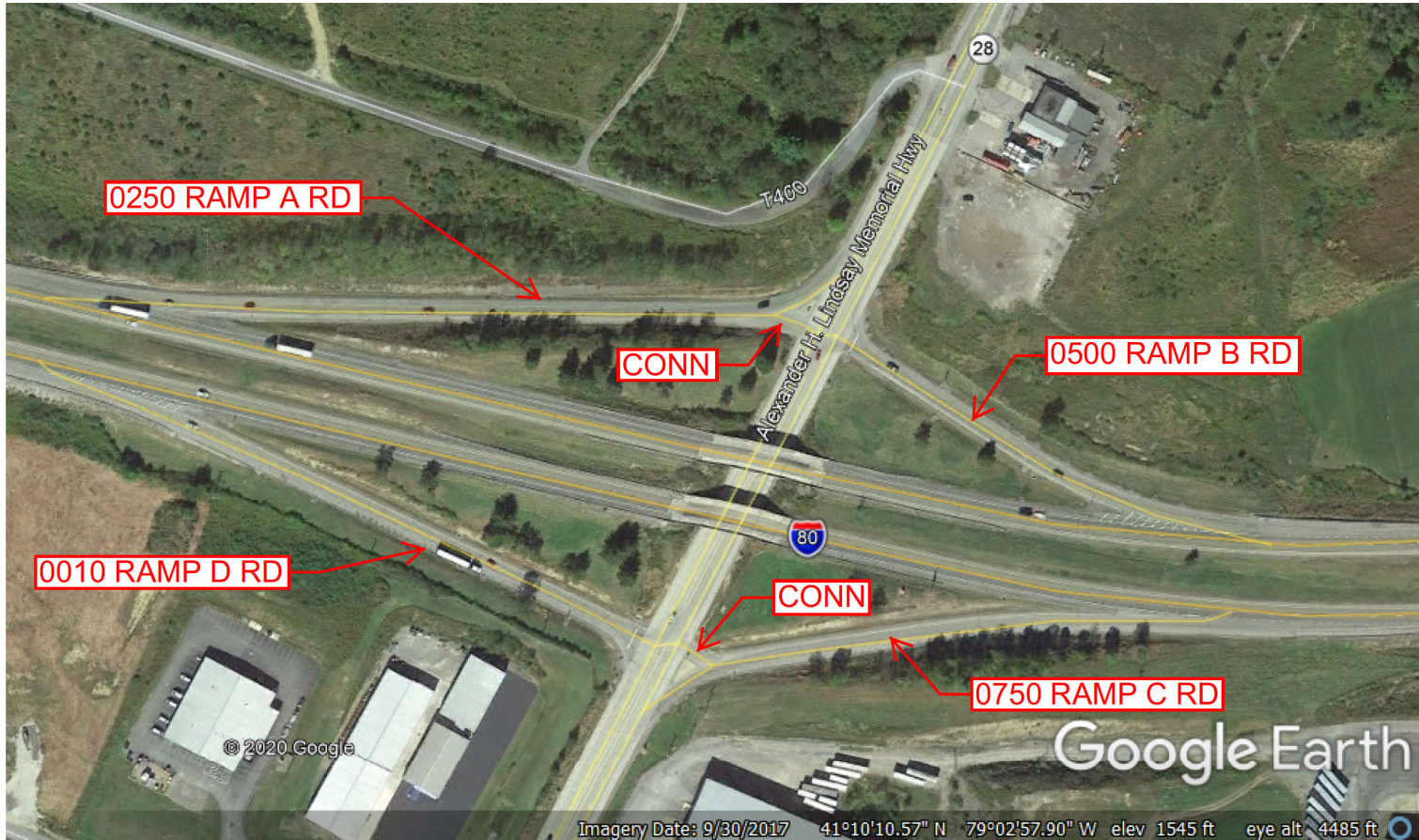
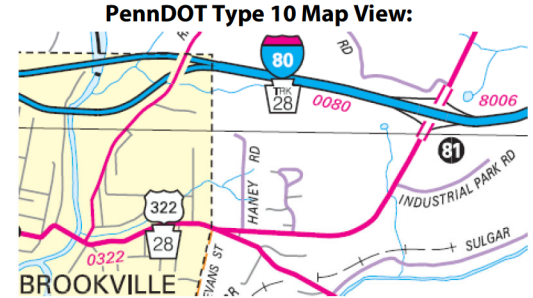
Intersecting SR's: I-80 Keystone Shortway Rd & PA 28

Ramp Segment Number and Ramp Segment Length Information:

Segment	Length	Segment	Length	Segment	Length	Segment	Length
0010	0779						
0250	0932						
0500	0484						
0750	0676						

Primary Route Interchange Exit Number: 81

Secondary Route Interchange Exit Number:



Last Date Modified: Jun 9, 2023

County: 33

RMS Interchange Information

Print Form

Interchange Number: 8008

Bureau of Maintenance & Operations
Asset Management Division



Interchange Name: REYNOLDSVILLE

Intersecting SR's: I-80 & SR 1830

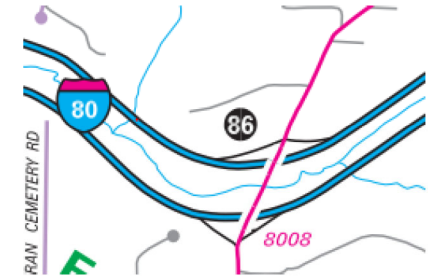
Ramp Segment Number and Ramp Segment Length Information:

Segment	Length	Segment	Length	Segment	Length	Segment	Length
0010	0868						
0250	0681						
0500	0621						
0750	0657						

Primary Route Interchange Exit Number: 86

Secondary Route Interchange Exit Number

PennDOT Type 10 Map View:



Imagery ©2020 Maxar Technologies, USDA Farm Service Agency, Map data ©2020 United States Terms

Last Date Modified: Jun 9, 2023

County: 33

RMS Interchange Information

Print Form

Interchange Number: 8010

Bureau of Maintenance & Operations
Asset Management Division



Interchange Name: DUBOIS REGIONAL AIRPORT

Intersecting SR's: I-80 & PA 830 Airport Rd

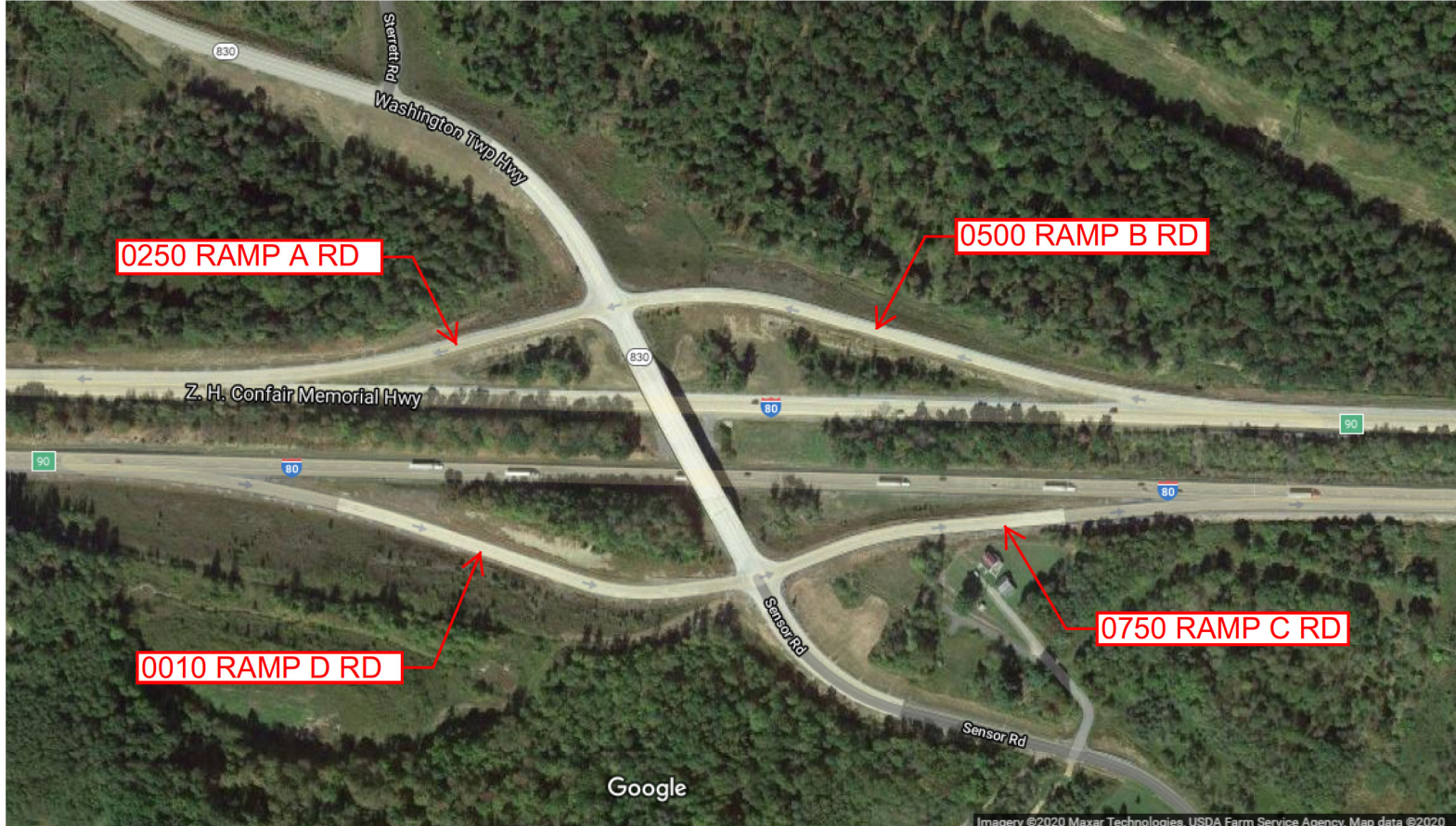
Ramp Segment Number and Ramp Segment Length Information:

Segment	Length	Segment	Length	Segment	Length	Segment	Length
0010	1152						
0250	0791						
0500	1198						
0750	0908						

Primary Route Interchange Exit Number: 90

Secondary Route Interchange Exit Number

PennDOT Type 10 Map View:



Last Date Modified: Jun 9, 2023

County: 33

RMS Interchange Information

Print Form

Interchange Number: 9201

Bureau of Maintenance & Operations
Asset Management Division



Interchange Name: REST AREA

Intersecting SR's: I-80

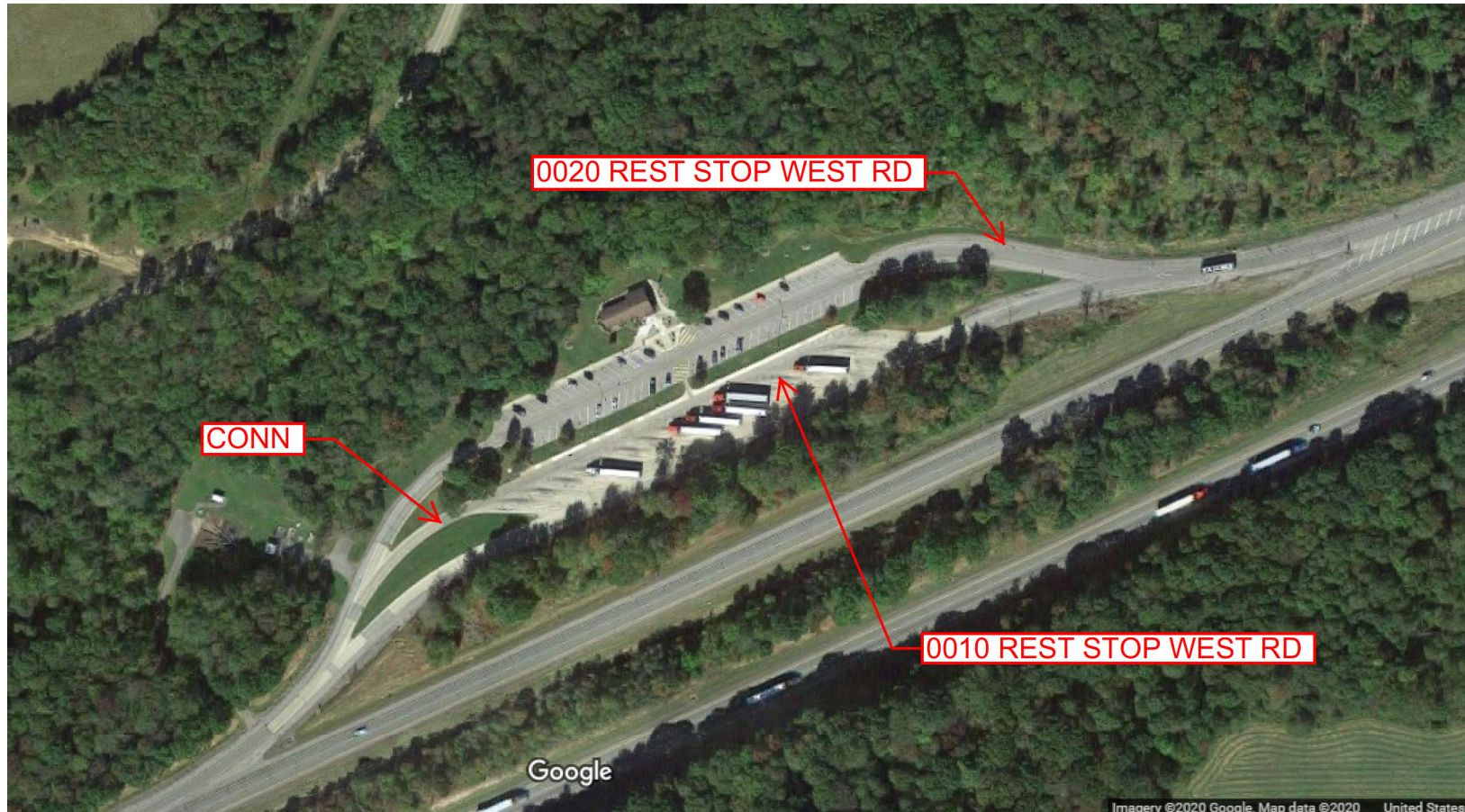
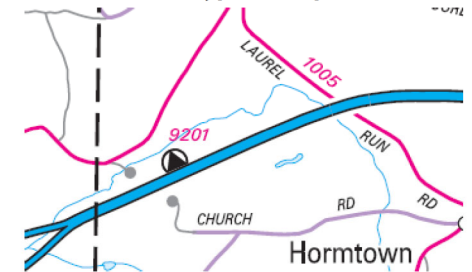
Ramp Segment Number and Ramp Segment Length Information:

Segment	Length	Segment	Length	Segment	Length	Segment	Length
0010	1621						
0020	1169						

Primary Route Interchange Exit Number

Secondary Route Interchange Exit Number

PennDOT Type 10 Map View:



Last Date Modified: Jun 9, 2023

County: 33

RMS Interchange Information

Print Form

Interchange Number: 9202

Bureau of Maintenance & Operations
Asset Management Division



Interchange Name: REST AREA

Intersecting SR's: I-80

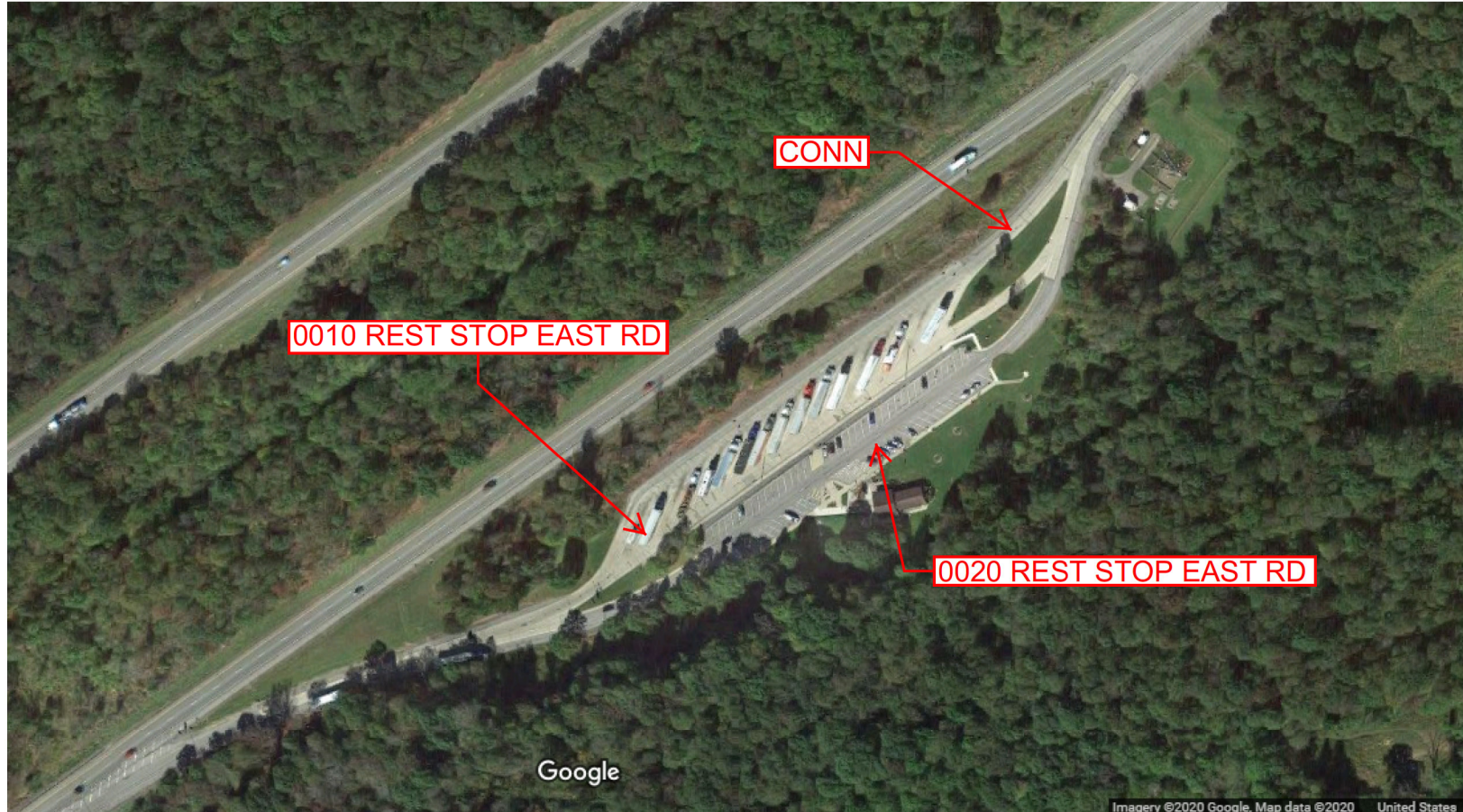
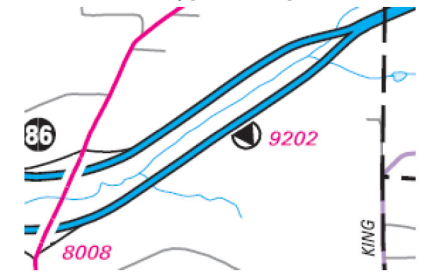
Ramp Segment Number and Ramp Segment Length Information:

Segment	Length	Segment	Length	Segment	Length	Segment	Length
0010	1680						
0020	0835						

Primary Route Interchange Exit Number

Secondary Route Interchange Exit Number

PennDOT Type 10 Map View:



Last Date Modified:

Jun 9, 2023

County: 33

RMS Interchange Information

Print Form

Interchange Number: 9301

Bureau of Maintenance & Operations
Asset Management Division



Interchange Name: US 119 TRUCK RUNOFF RD

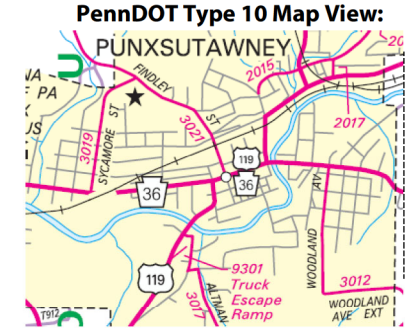
Intersecting SR's: US 119

Ramp Segment Number and Ramp Segment Length Information:

Segment	Length	Segment	Length	Segment	Length	Segment	Length
0010	0299						

Primary Route Interchange Exit Number

Secondary Route Interchange Exit Number



Last Date Modified: Jun 12, 2023

County: 33

RMS Interchange Information

Print Form

Interchange Number: 9402

Bureau of Maintenance & Operations
Asset Management Division



Interchange Name: US 119 TRUCK STOP

Intersecting SR's: US 119

Ramp Segment Number and Ramp Segment Length Information:

Segment	Length	Segment	Length	Segment	Length	Segment	Length
0010	0375						

Primary Route Interchange Exit Number

Secondary Route Interchange Exit Number

PennDOT Type 10 Map View:



Last Date Modified:

Jun 12, 2023

County: 33

RMS Interchange Information

Print Form

Interchange Number: 9404

Bureau of Maintenance & Operations
Asset Management Division



Interchange Name: BROCKWAY TRUCK STOP

Intersecting SR's: PA 28

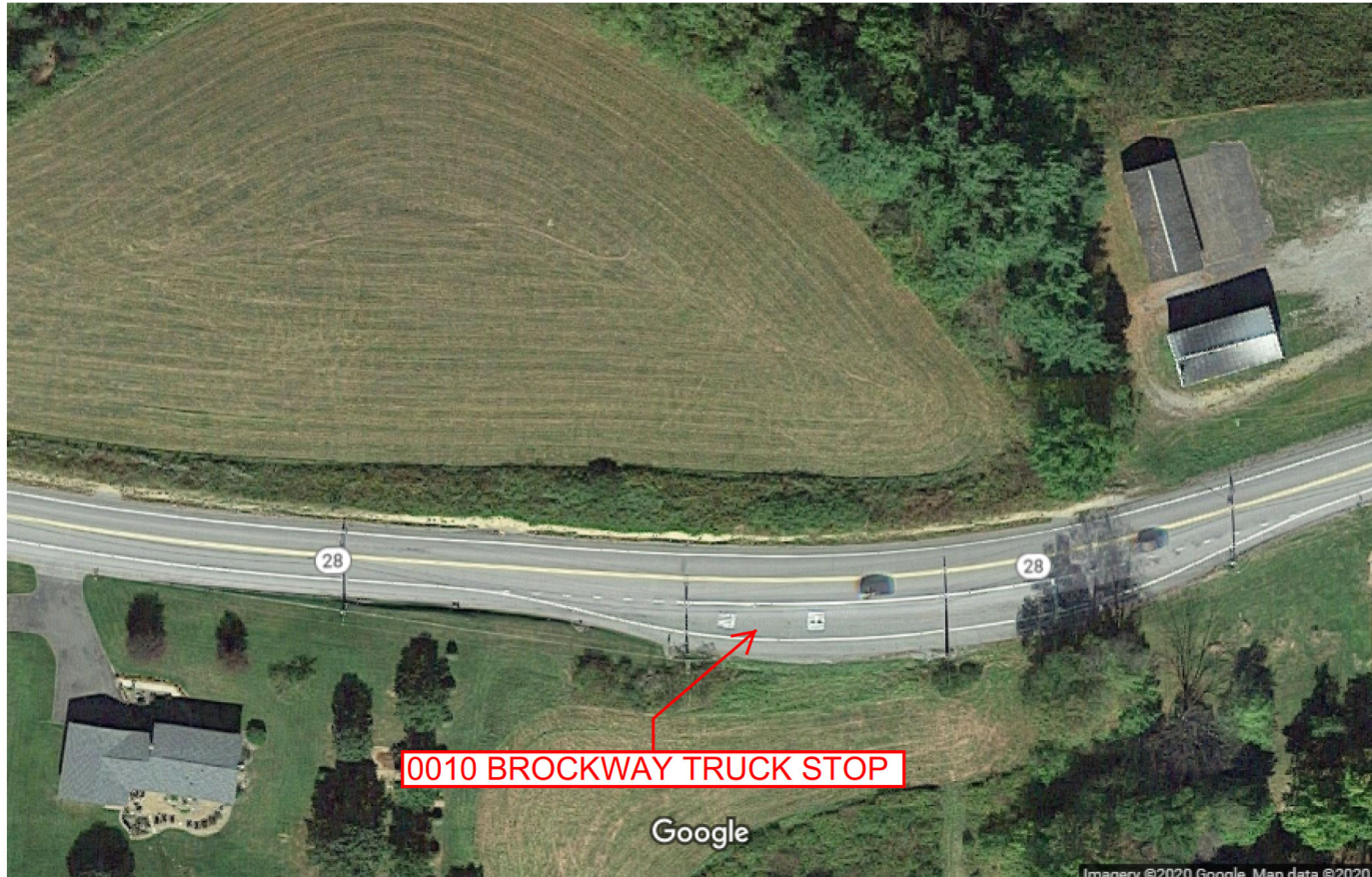
Ramp Segment Number and Ramp Segment Length Information:

Segment	Length	Segment	Length	Segment	Length	Segment	Length
0010	0313						

Primary Route Interchange Exit Number

Secondary Route Interchange Exit Number

PennDOT Type 10 Map View:



Google

Imagery ©2020 Google, Map data ©2020

Last Date Modified:

Jun 12, 2023

County: 33

RMS Interchange Information

Print Form

Interchange Number: 9501

Bureau of Maintenance & Operations
Asset Management Division



Interchange Name: US 119 & PA 436 PARK-N-RIDE

Intersecting SR's: PA 436

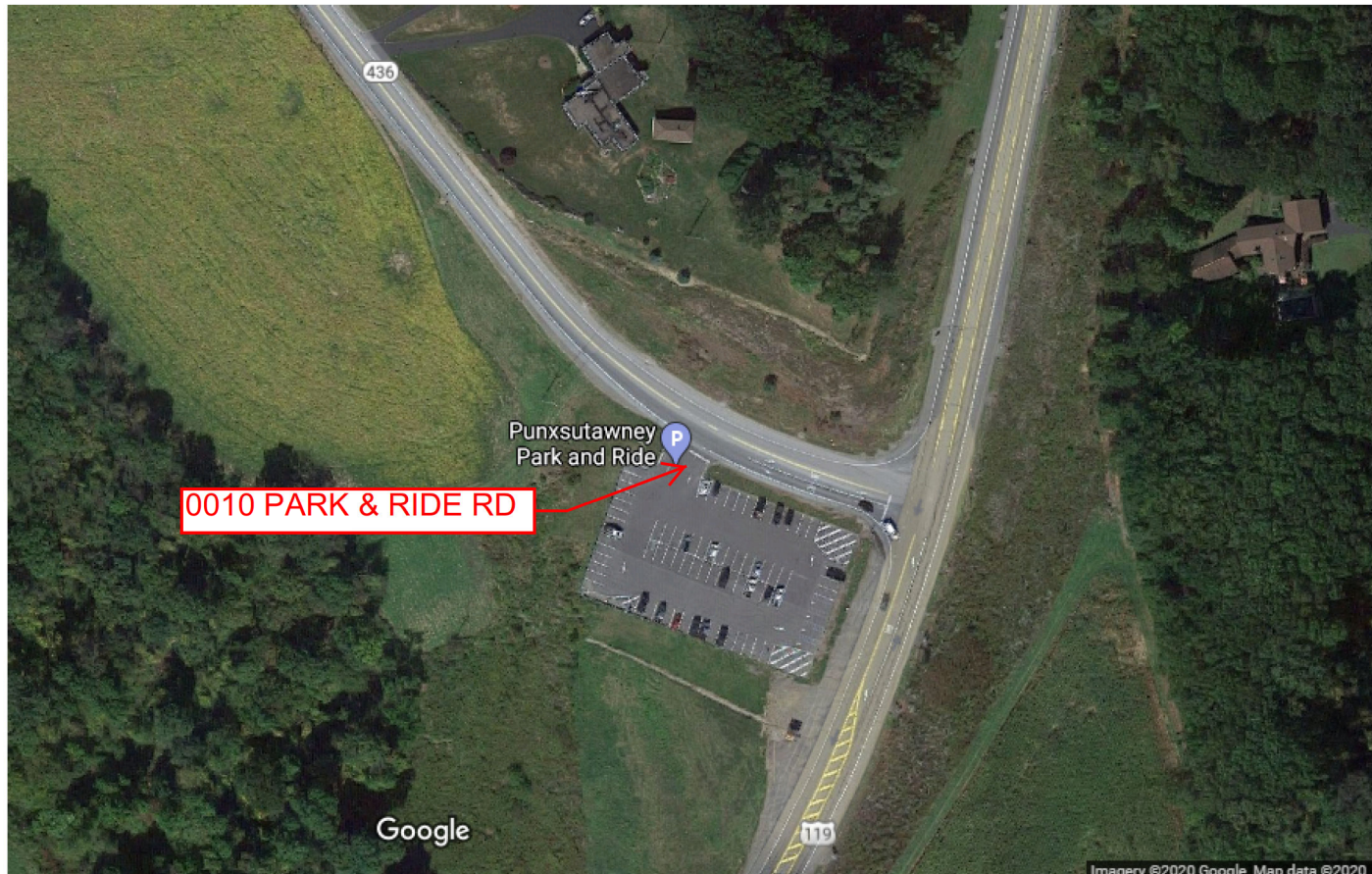
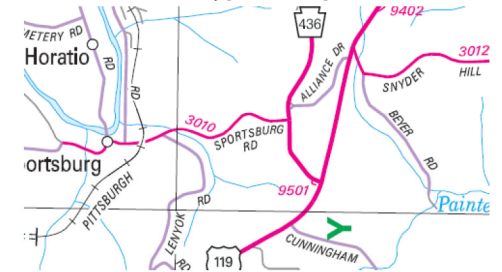
Ramp Segment Number and Ramp Segment Length Information:

Segment	Length	Segment	Length	Segment	Length	Segment	Length
0010	0177						

Primary Route
Interchange Exit
Number

Secondary Route
Interchange Exit
Number

PennDOT Type 10 Map View:



Last Date Modified:

Jun 12, 2023