

County: 04

RMS Interchange Information

Print Form

Interchange Number: 8001

Bureau of Maintenance & Operations
Roadway Management Division



Interchange Name: SOUTH HEIGHTS

Intersecting SR's: I-376 Beaver Valley Ex & PA 151 Bocktown Rd

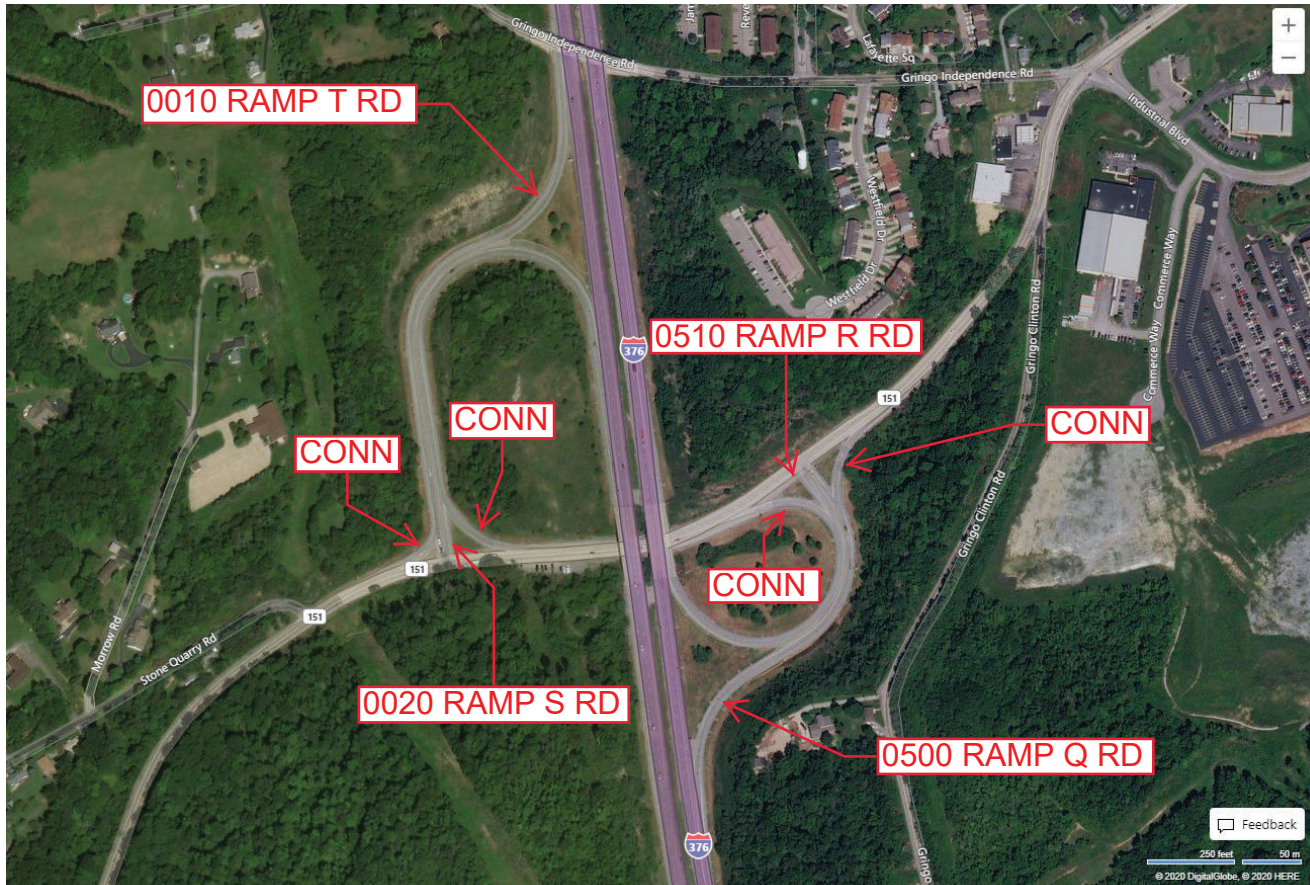
Ramp Segment Number and Ramp Segment Length Information:

Segment	Length	Segment	Length	Segment	Length	Segment	Length
0010	1454						
0020	1419						
0500	1076						
0510	1017						

Primary Route Interchange Exit Number: 48

Secondary Route Interchange Exit Number

PennDOT Type 10 Map View:



Last Date Modified:

May 26, 2020

County: 04

RMS Interchange Information

Print Form

Interchange Number: 8003

Bureau of Maintenance & Operations
Roadway Management Division



Interchange Name: GREEN GARDEN

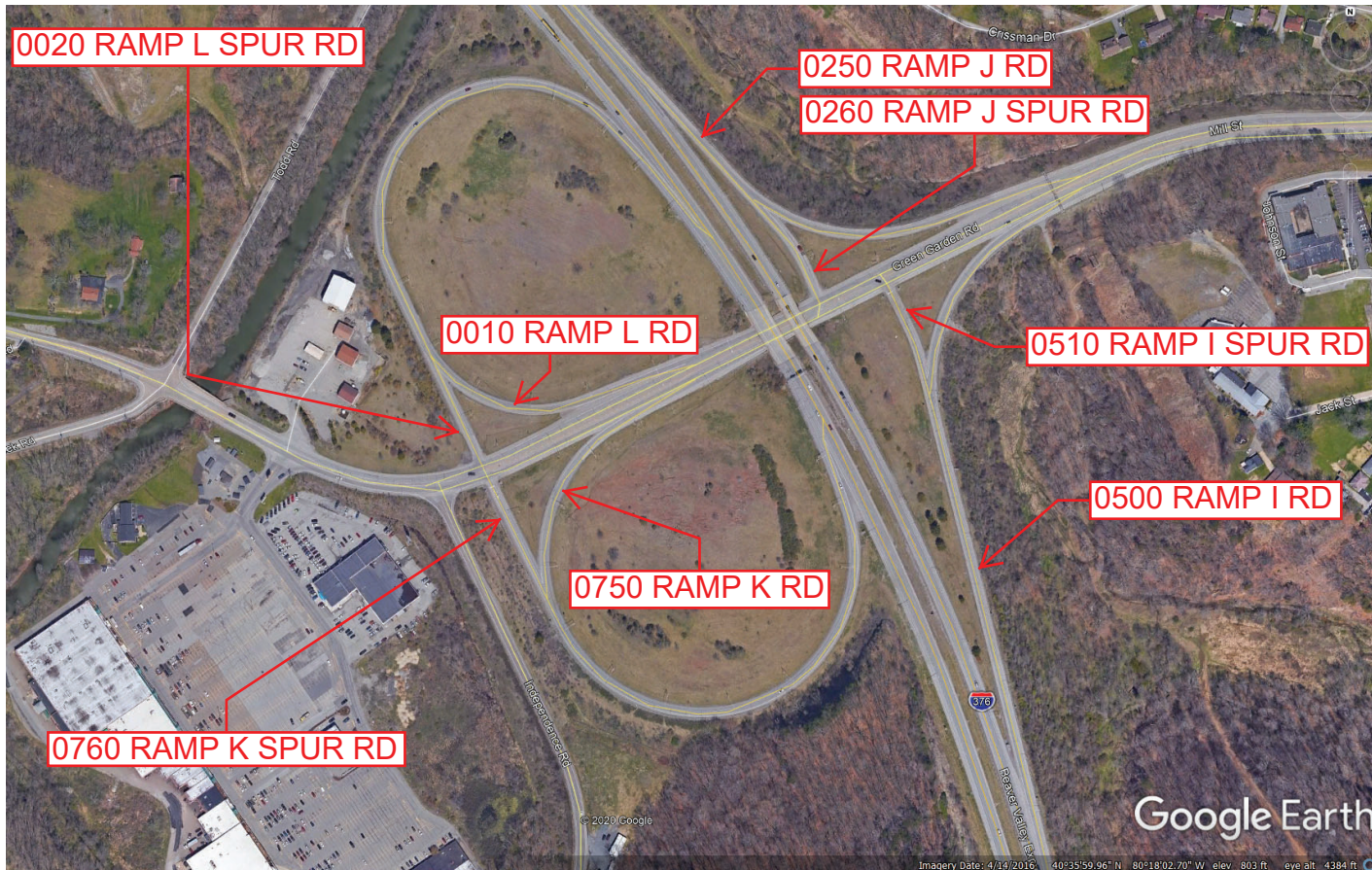
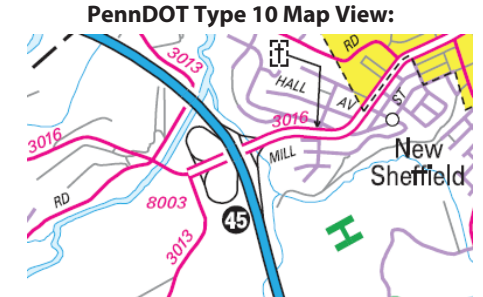
Intersecting SR's: I-376 Beaver Valley Ex & SR 3016 Green Garden Rd

Ramp Segment Number and Ramp Segment Length Information:

Segment	Length	Segment	Length	Segment	Length	Segment	Length
0010	1742	0510	0221				
0020	0238	0750	1750				
0250	1008	0760	0268				
0260	0238						
0500	1502						

Primary Route Interchange Exit Number: 45

Secondary Route Interchange Exit Number



Google Earth

Imagery Date: 4/14/2016 40°35'59.96" N 80°18'02.70" W elev. 803 ft. eye alt. 4384 ft.

Last Date Modified:

May 26, 2020

County: 04

RMS Interchange Information

Print Form

Interchange Number: 8004

Bureau of Maintenance & Operations
Roadway Management Division



Interchange Name: SHIPPINGPORT BR INT

Intersecting SR's: PA 68 Midland Beaver Rd & PA 168 Shippingport Hill Rd

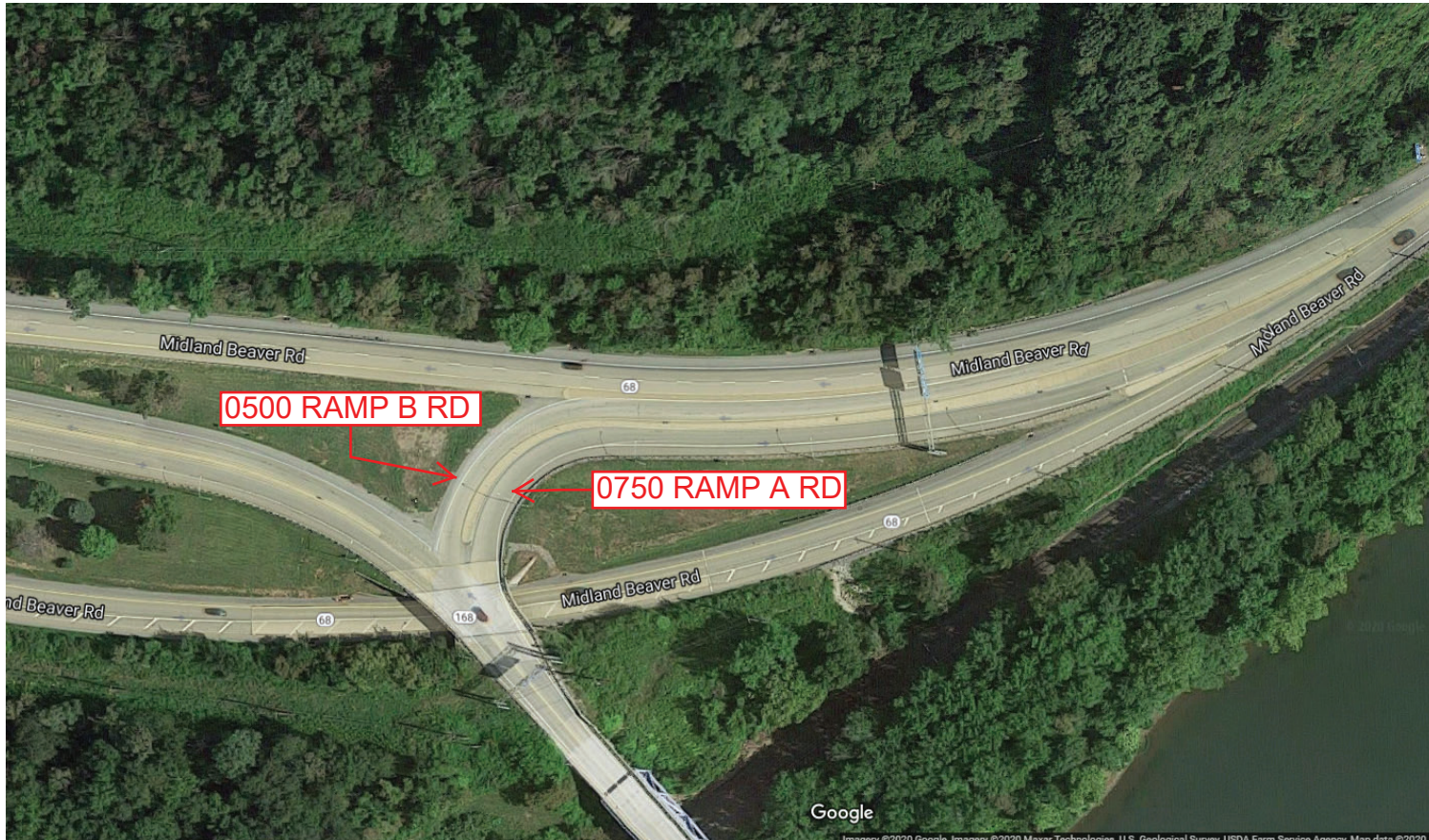
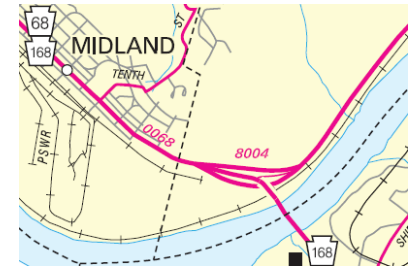
Ramp Segment Number and Ramp Segment Length Information:

Segment	Length	Segment	Length	Segment	Length	Segment	Length
0500	0477						
0750	0721						

Primary Route Interchange Exit Number

Secondary Route Interchange Exit Number

PennDOT Type 10 Map View:



Last Date Modified: May 26, 2020

County: 04

RMS Interchange Information

Print Form

Interchange Number: 8005

Bureau of Maintenance & Operations
Roadway Management Division



Interchange Name: CENTER

Intersecting SR's: I-376 Beaver Valley Ex & SR 3017 Pleasant Dr

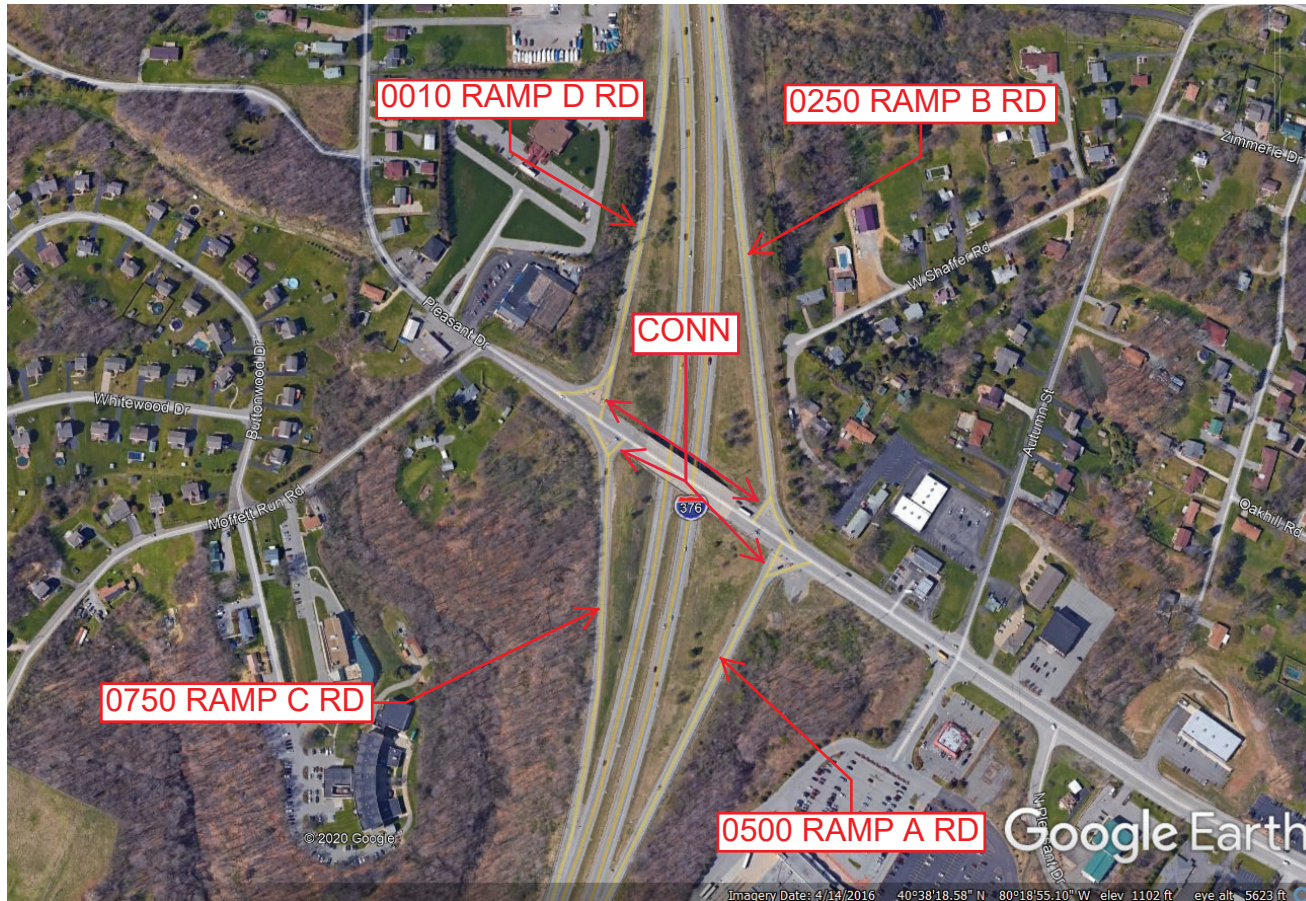
Ramp Segment Number and Ramp Segment Length Information:

Segment	Length	Segment	Length	Segment	Length	Segment	Length
0010	1027						
0250	1148						
0500	1053						
0750	1070						

Primary Route Interchange Exit Number: 42

Secondary Route Interchange Exit Number

PennDOT Type 10 Map View:



Last Date Modified: May 27, 2020

County: 04

RMS Interchange Information

Bureau of Maintenance & Operations
Asset Management Division

Print Form



Interchange Number: 8007

Interchange Name: CENTER & POTTER INT

Intersecting SR's: I-376 Beaver Valley Ex & PA 18 Frankfort Rd

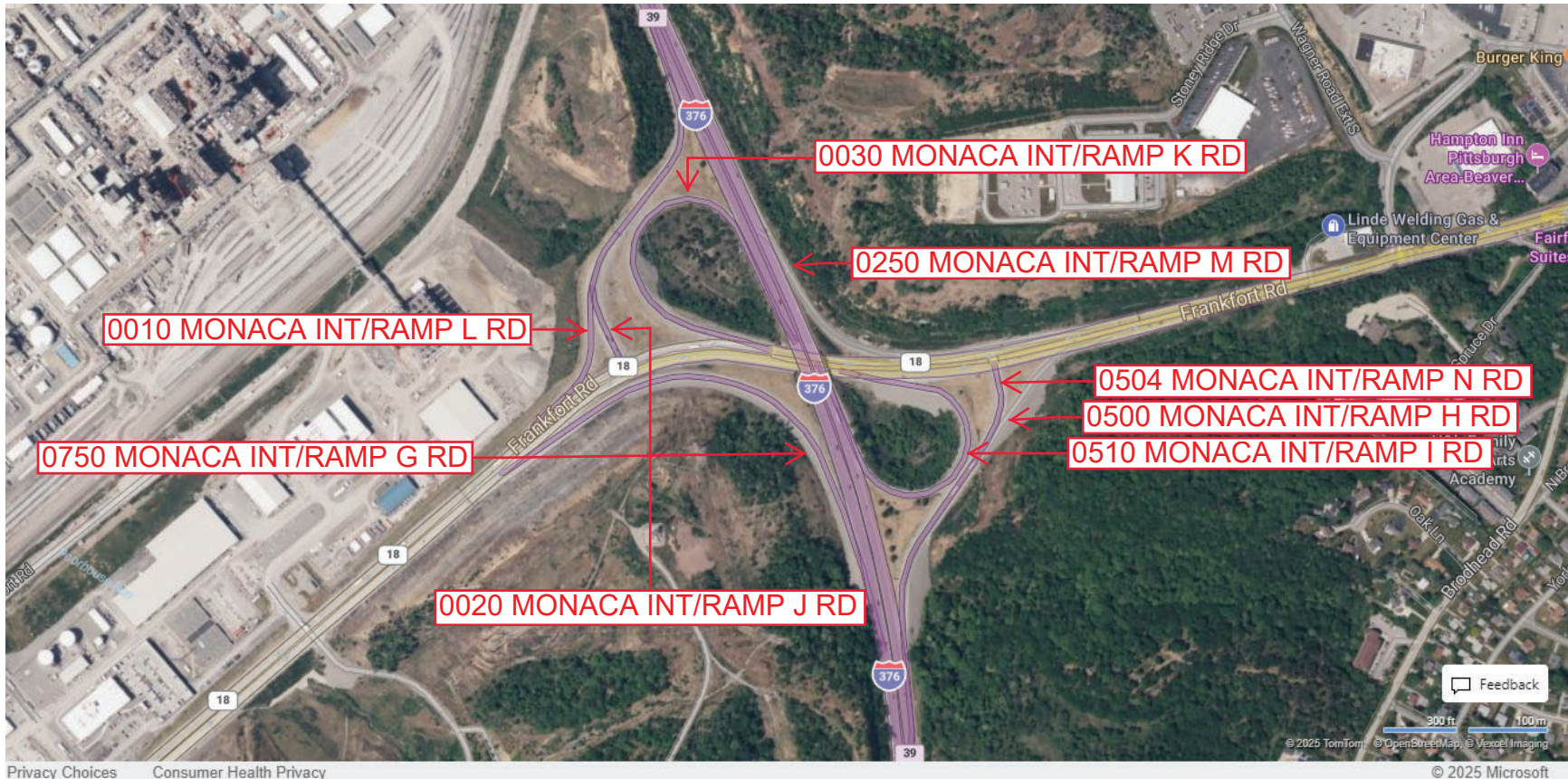
Ramp Segment Number and Ramp Segment Length Information:

Segment	Length	Segment	Length	Segment	Length	Segment	Length
0010	1339	0504	0200				
0020	0219	0510	0990				
0030	1116	0750	1491				
0260	1112						
0500	1319						

Primary Route Interchange Exit Number: 39

Secondary Route Interchange Exit Number

PennDOT Type 10 Map View:



Privacy Choices Consumer Health Privacy

© 2025 TomTom © OpenStreetMap © Vexcel Imaging

© 2025 Microsoft

Last Date Modified:

Feb 7, 2025

County: 04

RMS Interchange Information

Print Form

Interchange Number: 8009

Bureau of Maintenance & Operations
Roadway Management Division



Interchange Name: VANPORT

Intersecting SR's: I-376 Beaver Valley Ex & PA 68 State Av

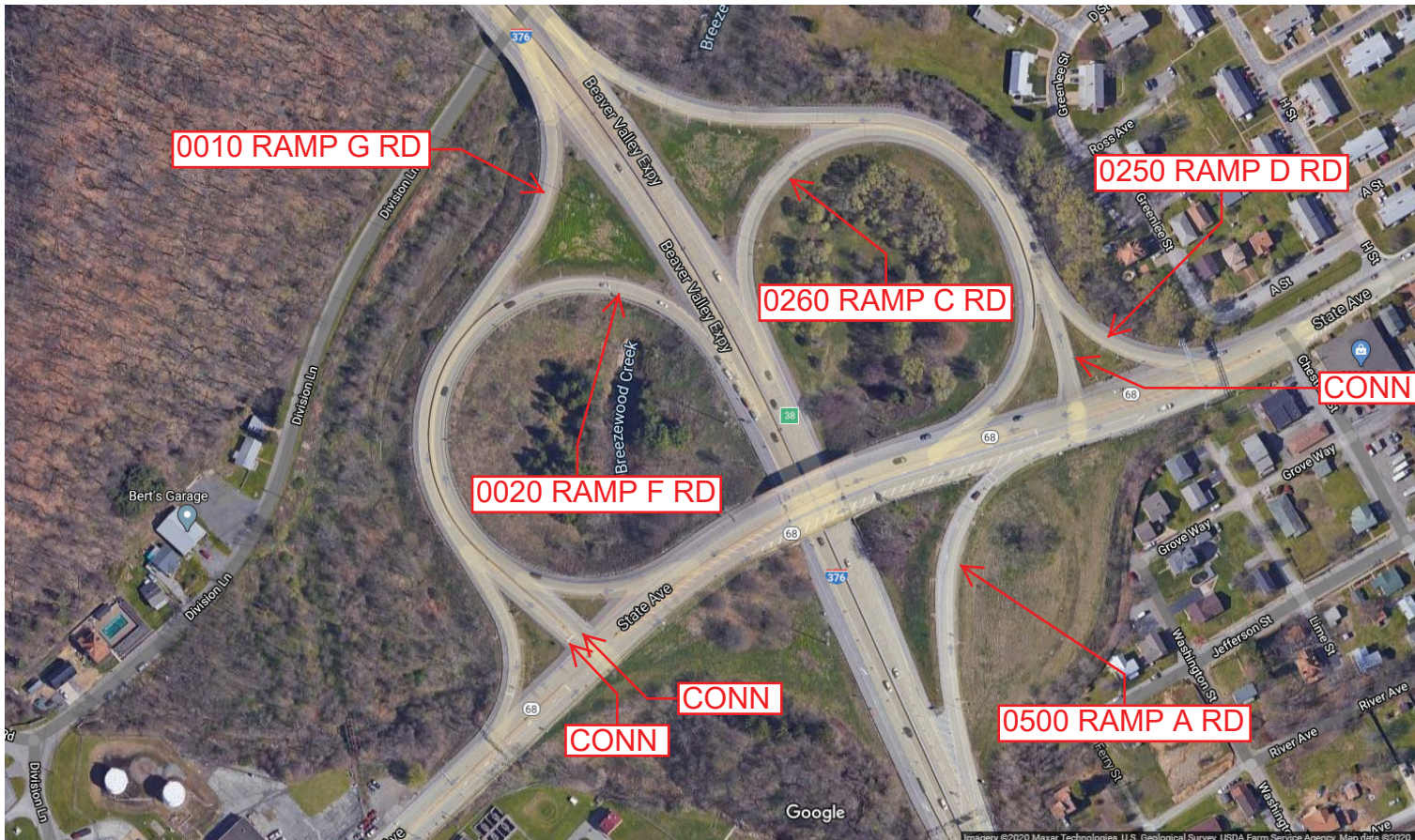
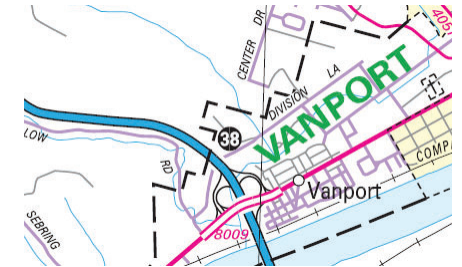
Ramp Segment Number and Ramp Segment Length Information:

Segment	Length	Segment	Length	Segment	Length	Segment	Length
0010	0968						
0020	0934						
0250	1038						
0260	0891						
0500	0403						

Primary Route Interchange Exit Number: 38, 38A, 38B

Secondary Route Interchange Exit Number

PennDOT Type 10 Map View:



Last Date Modified:

May 27, 2020

County: 04

RMS Interchange Information

Print Form

Interchange Number: 8010

Bureau of Maintenance & Operations
Asset Management Division



Interchange Name: BRIGHTON

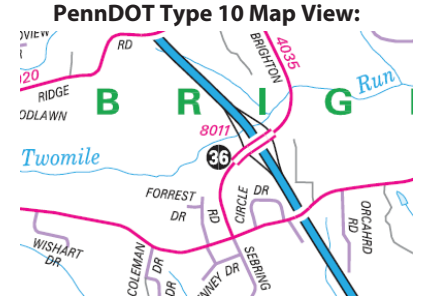
Intersecting SR's: I-376 Beaver Valley Ex & SR 4035 Brighton Rd

Ramp Segment Number and Ramp Segment Length Information:

Segment	Length	Segment	Length	Segment	Length	Segment	Length
0010	1325						
0250	1182						
0500	1081						
0750	0991						

Primary Route Interchange Exit Number: 36

Secondary Route Interchange Exit Number



Last Date Modified: Jan 7, 2025

County: 04

RMS Interchange Information

Print Form

Interchange Number: 8013

Bureau of Maintenance & Operations
Roadway Management Division



Interchange Name: CHIPPEWA TWP

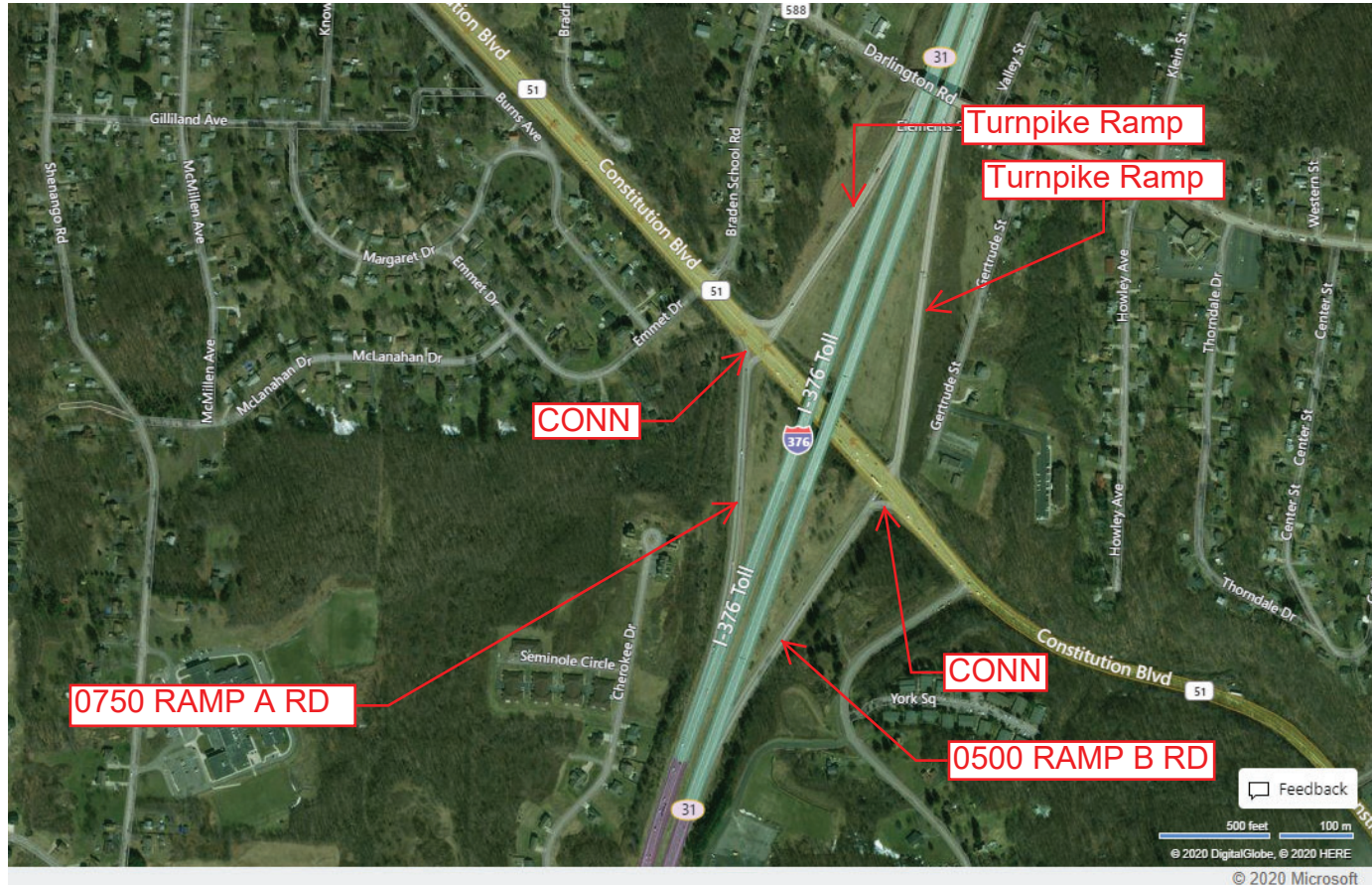
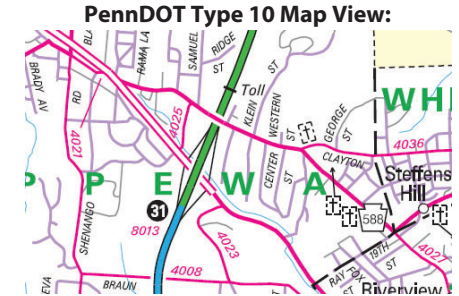
Intersecting SR's: I-376, I-376 TP toll & PA 51 Constitution Bl

Ramp Segment Number and Ramp Segment Length Information:

Segment	Length	Segment	Length	Segment	Length	Segment	Length
0500	1296						
0750	1348						

Primary Route Interchange Exit Number: 31

Secondary Route Interchange Exit Number



Feedback

500 Feet 100 m
© 2020 DigitalGlobe, © 2020 HERE
© 2020 Microsoft

Last Date Modified:

May 27, 2020

County: 04

RMS Interchange Information

Print Form

Interchange Number: 8023

Bureau of Maintenance & Operations
Asset Management Division



Interchange Name: AMBRIDGE/ALIQUIPPA INT

Intersecting SR's: PA 61 Constitution Bl & SR 3060 Ambridge/Aliquippa Br

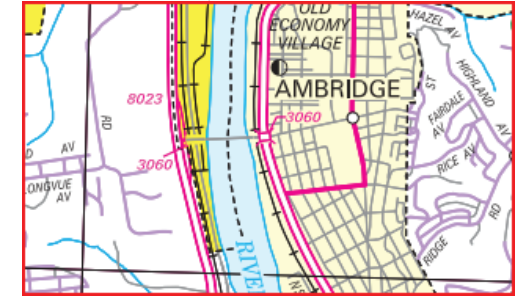
Ramp Segment Number and Ramp Segment Length Information:

Segment	Length	Segment	Length	Segment	Length	Segment	Length
0010	0926						
0750	0943						

Primary Route Interchange Exit Number

Secondary Route Interchange Exit Number

PennDOT Type 10 Map View:



Last Date Modified:

Feb 12, 2025

County: 04

RMS Interchange Information

Bureau of Maintenance & Operations
Asset Management Division

Print Form



Interchange Number: 8025

Interchange Name: ALIQUIPPA BORO INT

Intersecting SR's: PA 51, SR 3050 Henry Mancini Mem Br & West Highland Rd

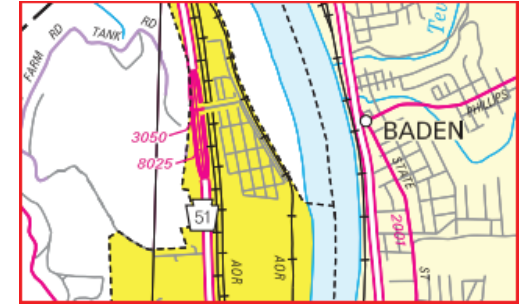
Ramp Segment Number and Ramp Segment Length Information:

Segment	Length	Segment	Length	Segment	Length	Segment	Length
0010	1382						
0750	0659						

Primary Route Interchange Exit Number

Secondary Route Interchange Exit Number

PennDOT Type 10 Map View:



Last Date Modified: Feb 12, 2025

County: 04

RMS Interchange Information

Print Form

Bureau of Maintenance & Operations
Asset Management Division



Interchange Number: 8029

Interchange Name: FREEDOM INT

Intersecting SR's: PA 65, SR 2002 Harvey Run Rd & SR 1065 Third Av

Ramp Segment Number and Ramp Segment Length Information:

Segment	Length	Segment	Length	Segment	Length	Segment	Length
0010	0724						
0020	1109						

Primary Route Interchange Exit Number

Secondary Route Interchange Exit Number

PennDOT Type 10 Map View:



Last Date Modified:

Feb 12, 2025

County: 04

RMS Interchange Information

Print Form

Interchange Number: 8031

Bureau of Maintenance & Operations
Roadway Management Division



Interchange Name: FREEDOM

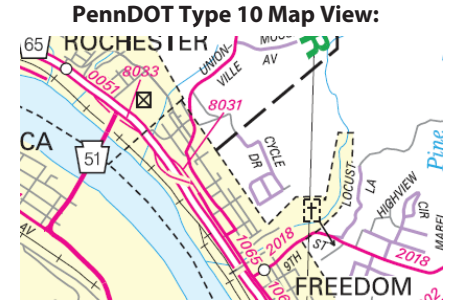
Intersecting SR's: PA 65 Ohio River Bl & SR 1065 Third Av

Ramp Segment Number and Ramp Segment Length Information:

Segment	Length	Segment	Length	Segment	Length	Segment	Length
0010	0451						
0020	0778						

Primary Route Interchange Exit Number

Secondary Route Interchange Exit Number



Last Date Modified: May 28, 2020

County: 04

RMS Interchange Information

Print Form

Interchange Number: 8033

Bureau of Maintenance & Operations
Roadway Management Division



Interchange Name: EAST ROCHESTER

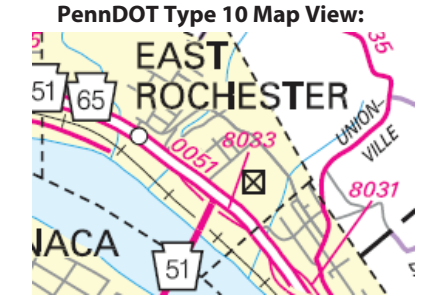
Intersecting SR's: PA 51 Ohio River BI & PA 65 Ohio River BI

Ramp Segment Number and Ramp Segment Length Information:

Segment	Length	Segment	Length	Segment	Length	Segment	Length
0010	1501						

Primary Route
Interchange Exit
Number

Secondary Route
Interchange Exit
Number



Last Date Modified:

May 28, 2020

County: 04

RMS Interchange Information

Print Form

Interchange Number: 8035

Bureau of Maintenance & Operations
Roadway Management Division



Interchange Name: ROCHESTER

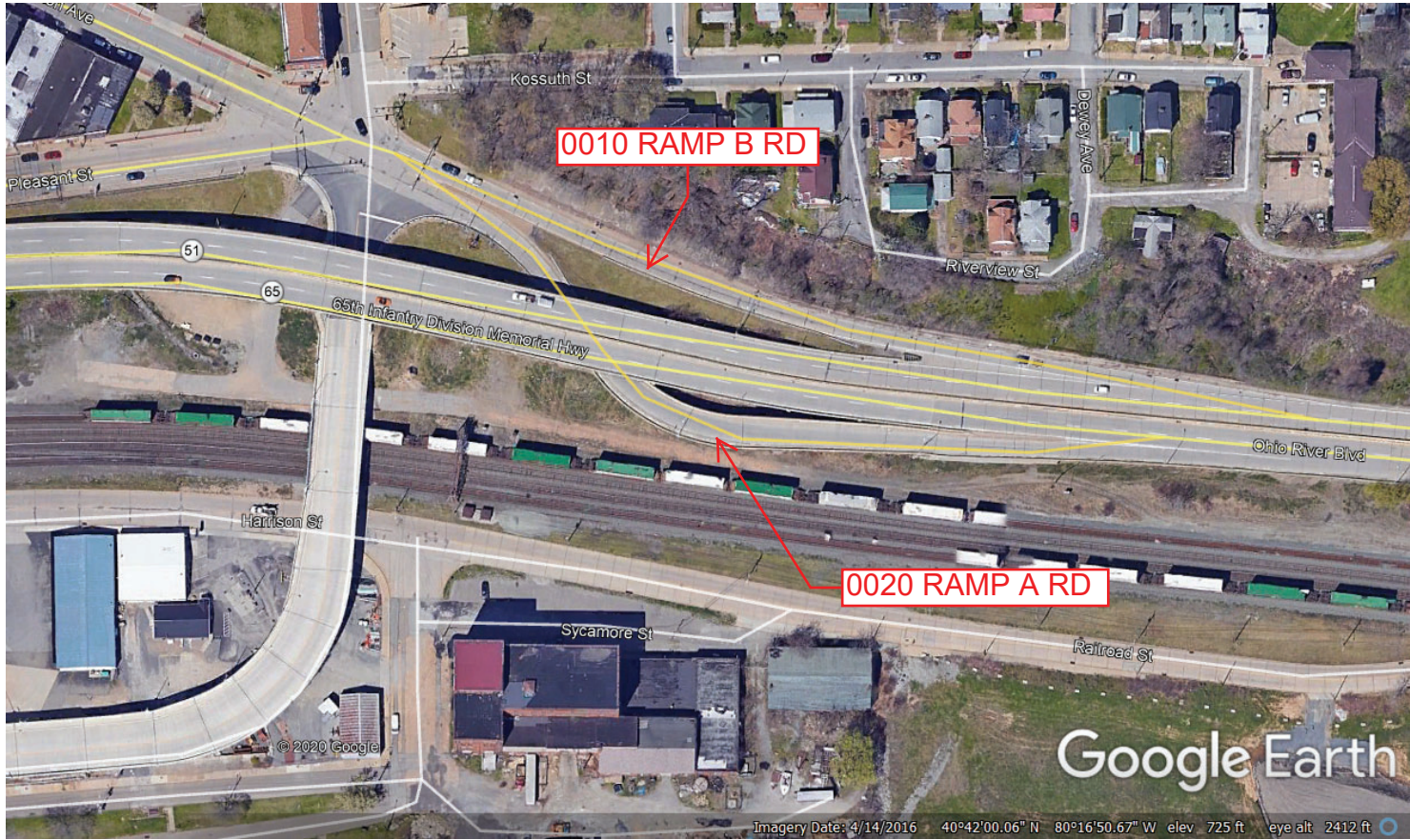
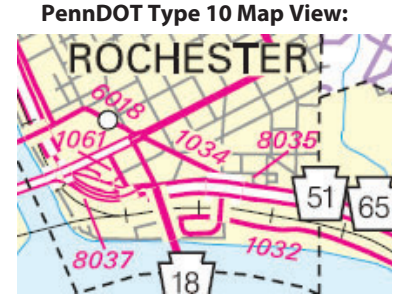
Intersecting SR's: PA 51 Ohio River Bl & SR 1034 Brighton Av

Ramp Segment Number and Ramp Segment Length Information:

Segment	Length	Segment	Length	Segment	Length	Segment	Length
0010	0467						
0020	0649						

Primary Route Interchange Exit Number

Secondary Route Interchange Exit Number



Last Date Modified: May 28, 2020

County: 04

RMS Interchange Information

Print Form

Interchange Number: 8037

Bureau of Maintenance & Operations
Asset Management Division



Interchange Name: ROCHESTER INT

Intersecting SR's: PA 18, PA 51, PA 68 & SR 1061 Pleasant ST

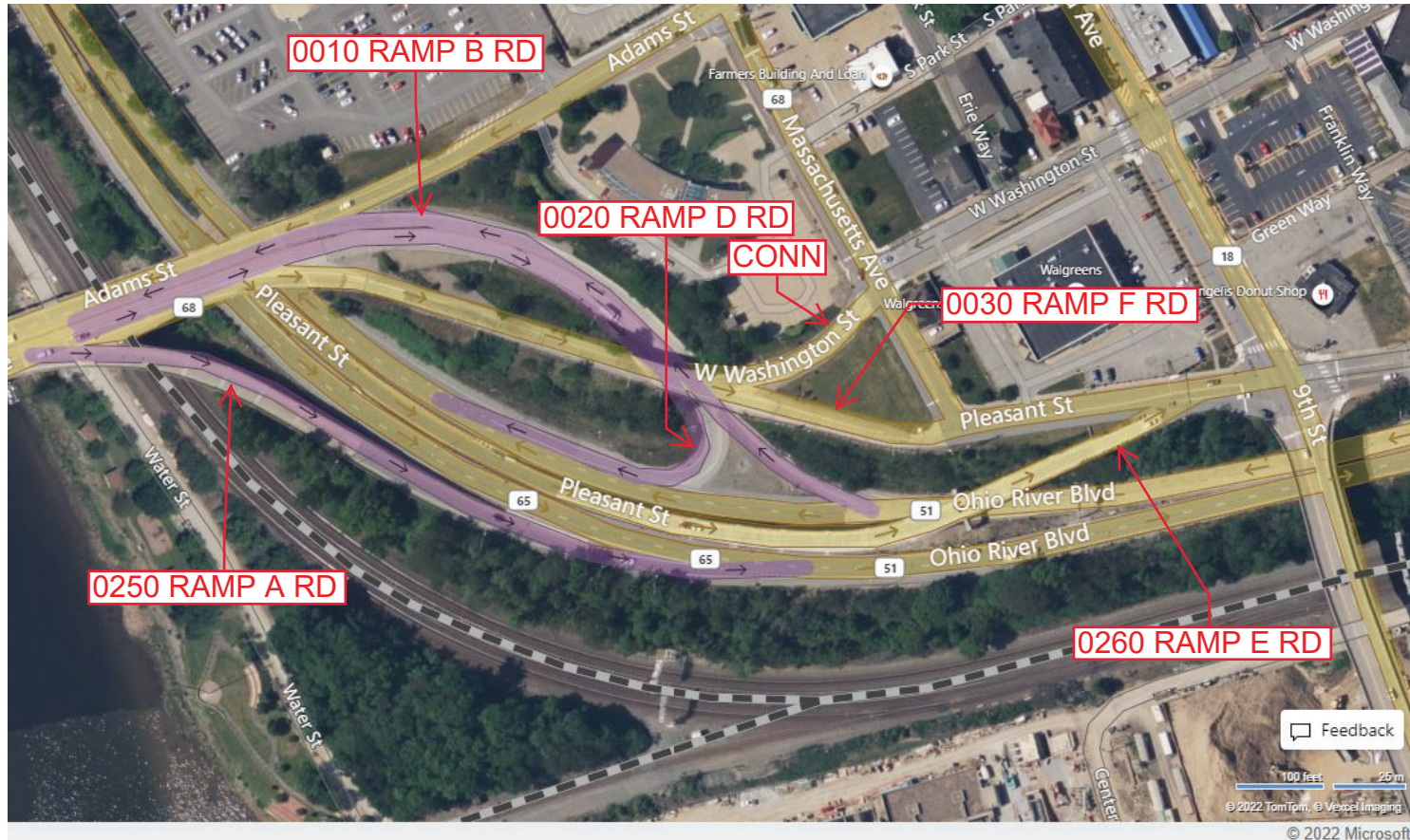
Ramp Segment Number and Ramp Segment Length Information:

Segment	Length	Segment	Length	Segment	Length	Segment	Length
0010	0751						
0020	0660						
0030	0784						
0250	0704						
0260	1143						

Primary Route Interchange Exit Number

Secondary Route Interchange Exit Number

PennDOT Type 10 Map View:



Feedback

100 Feet 25 m
© 2022 TomTom. © Vexcel Imaging
© 2022 Microsoft

Last Date Modified: Aug 31, 2022

County: 04

RMS Interchange Information

Print Form

Interchange Number: 8039

Bureau of Maintenance & Operations
Roadway Management Division



Interchange Name: BRIDGEWATER

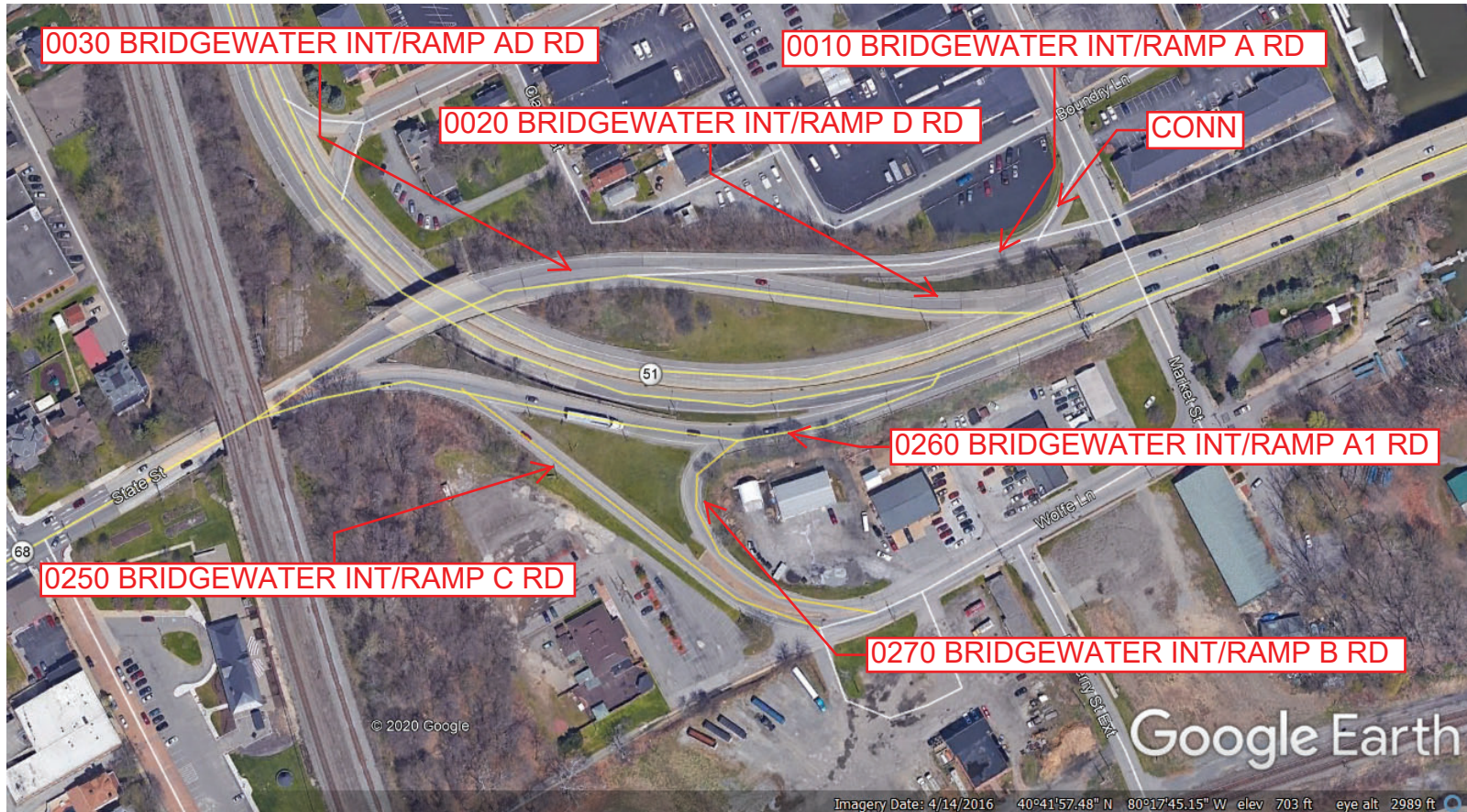
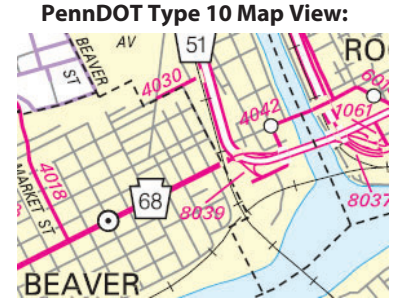
Intersecting SR's: PA 51, PA 68 Third St & SR 4042 Market St

Ramp Segment Number and Ramp Segment Length Information:

Segment	Length	Segment	Length	Segment	Length	Segment	Length
0010	0407	0270	0294				
0020	0216						
0030	0530						
0250	0663						
0260	0378						

Primary Route Interchange Exit Number

Secondary Route Interchange Exit Number



Last Date Modified: May 28, 2020

County: 04

RMS Interchange Information

Print Form

Interchange Number: 8041

Bureau of Maintenance & Operations
Roadway Management Division



Interchange Name: BEDFORD ST & DELAWARE

Intersecting SR's: PA 18 Junction Stretch Rd & PA 6018 Delaware Av

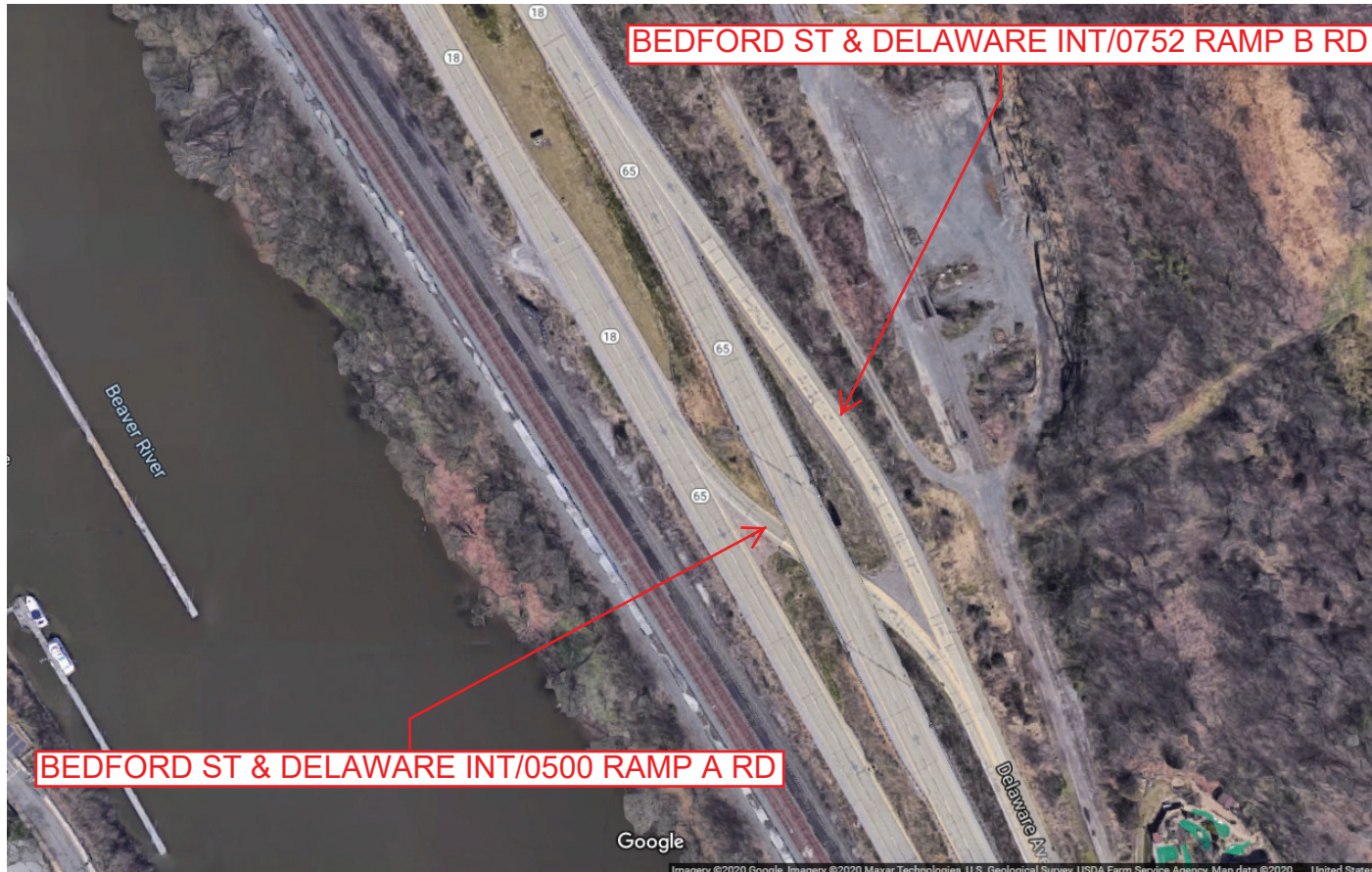
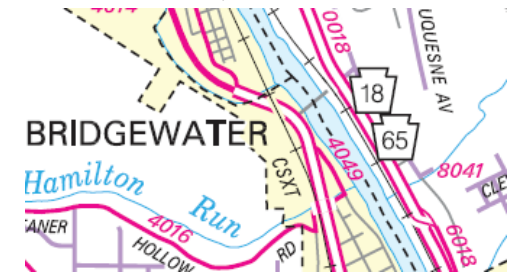
Ramp Segment Number and Ramp Segment Length Information:

Segment	Length	Segment	Length	Segment	Length	Segment	Length
0500	0256						
0752	0435						

Primary Route
Interchange Exit
Number

Secondary Route
Interchange Exit
Number

PennDOT Type 10 Map View:



Last Date Modified:

Sep 17, 2020

County: 04

RMS Interchange Information

Print Form

Bureau of Maintenance & Operations
Roadway Management Division



Interchange Number: 9101

Interchange Name: PA 151 & SR 3013 WYE

Intersecting SR's: PA 151 Bocktown Rd & SR 3013 Independence Rd

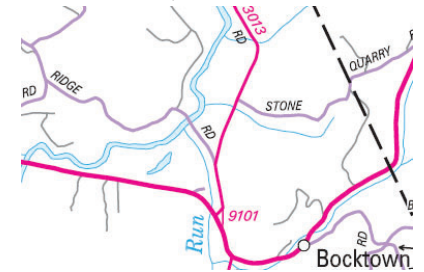
Ramp Segment Number and Ramp Segment Length Information:

Segment	Length	Segment	Length	Segment	Length	Segment	Length
0010	0210						

Primary Route
Interchange Exit
Number

Secondary Route
Interchange Exit
Number

PennDOT Type 10 Map View:



0010 Y CONN RD

Last Date Modified:

May 28, 2020

County: 04

RMS Interchange Information

Print Form

Interchange Number: 9102

Bureau of Maintenance & Operations
Roadway Management Division



Interchange Name: SR 3007 & SR 3017 WYE

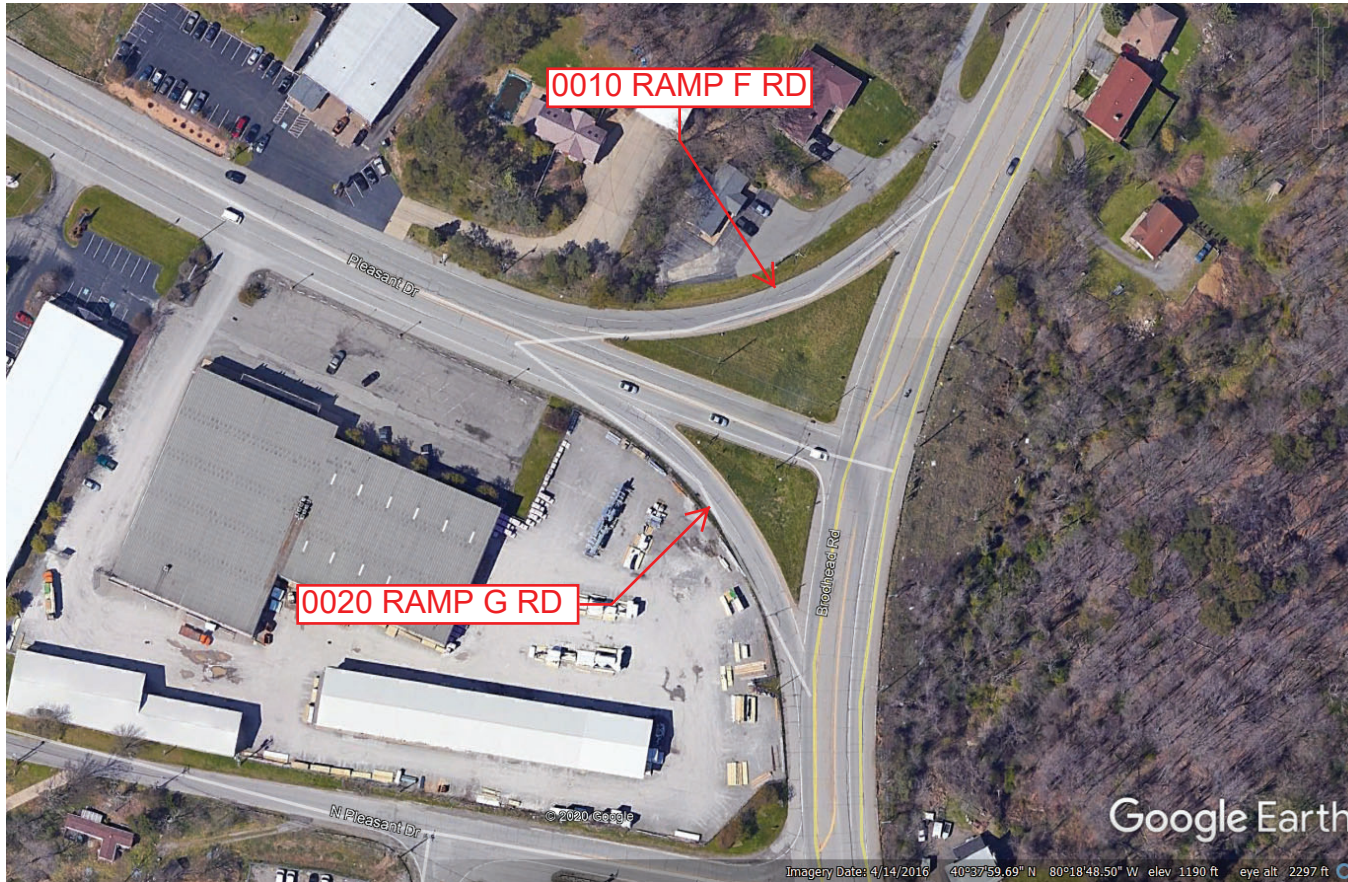
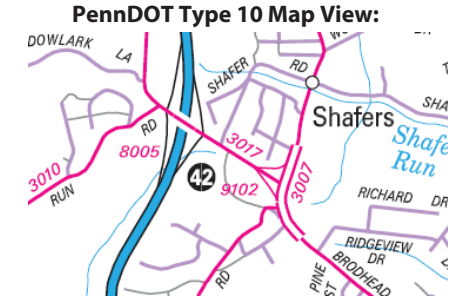
Intersecting SR's: SR 3007 Brodhead Rd & SR 3017 Pleasant Dr

Ramp Segment Number and Ramp Segment Length Information:

Segment	Length	Segment	Length	Segment	Length	Segment	Length
0010	0257						
0020	0177						

Primary Route Interchange Exit Number

Secondary Route Interchange Exit Number



Last Date Modified: May 28, 2020

County: 04

RMS Interchange Information

Print Form

Interchange Number: 9105

Bureau of Maintenance & Operations
Roadway Management Division



Interchange Name: PA 18 & BRODHEAD RD WYE

Intersecting SR's: PA 18, SR 3002 Brodhead Rd & SR 3007 Old Brodhead Rd

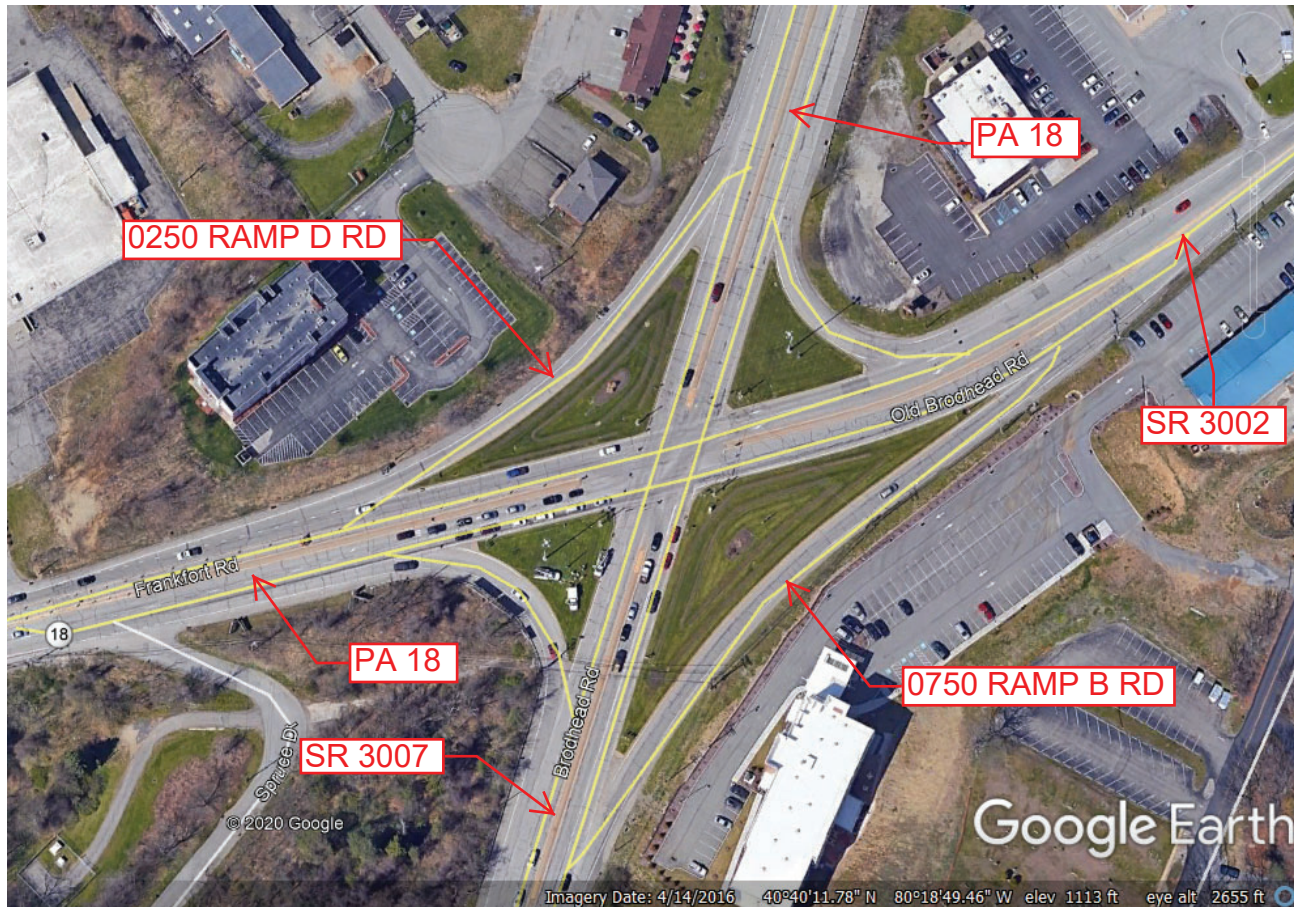
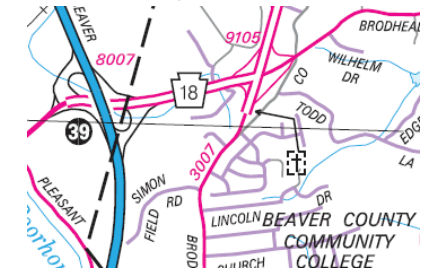
Ramp Segment Number and Ramp Segment Length Information:

Segment	Length	Segment	Length	Segment	Length	Segment	Length
0250	0325						
0750	0452						

Primary Route
Interchange Exit
Number

Secondary Route
Interchange Exit
Number

PennDOT Type 10 Map View:



Last Date Modified:

May 28, 2020

County: 04

RMS Interchange Information

Print Form

Interchange Number: 9401

Bureau of Maintenance & Operations
Roadway Management Division



Interchange Name: BRADYS RUN RD JUGHANDLE

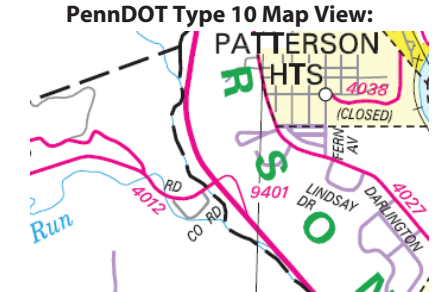
Intersecting SR's: PA 51 Constitution Bl & SR 4012 Bradys Run Rd

Ramp Segment Number and Ramp Segment Length Information:

Segment	Length	Segment	Length	Segment	Length	Segment	Length
0010	0435						

Primary Route Interchange Exit Number

Secondary Route Interchange Exit Number



0010 BRADYS RUN JUGHANDLE RD

Last Date Modified:

May 28, 2020