

County: 26

RMS Interchange Information

Print Form

Interchange Number: 8001

Bureau of Maintenance & Operations
Asset Management Division



Interchange Name: SYCAMORE TREE INT

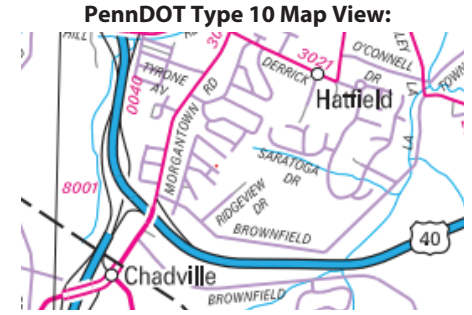
Intersecting SR's: US 40, PA 43 & SR 3010 Morgantown Rd

Ramp Segment Number and Ramp Segment Length Information:

Segment	Length	Segment	Length	Segment	Length	Segment	Length
0500	0710						
0760	0890						

Primary Route Interchange Exit Number

Secondary Route Interchange Exit Number



Last Date Modified: Jun 24, 2022

County: 26

RMS Interchange Information

Print Form

Bureau of Maintenance & Operations
Asset Management Division



Interchange Number: 8002

Interchange Name: MARKET ST INT

Intersecting SR's: US 40 & SR 4035 Market St/Spring St

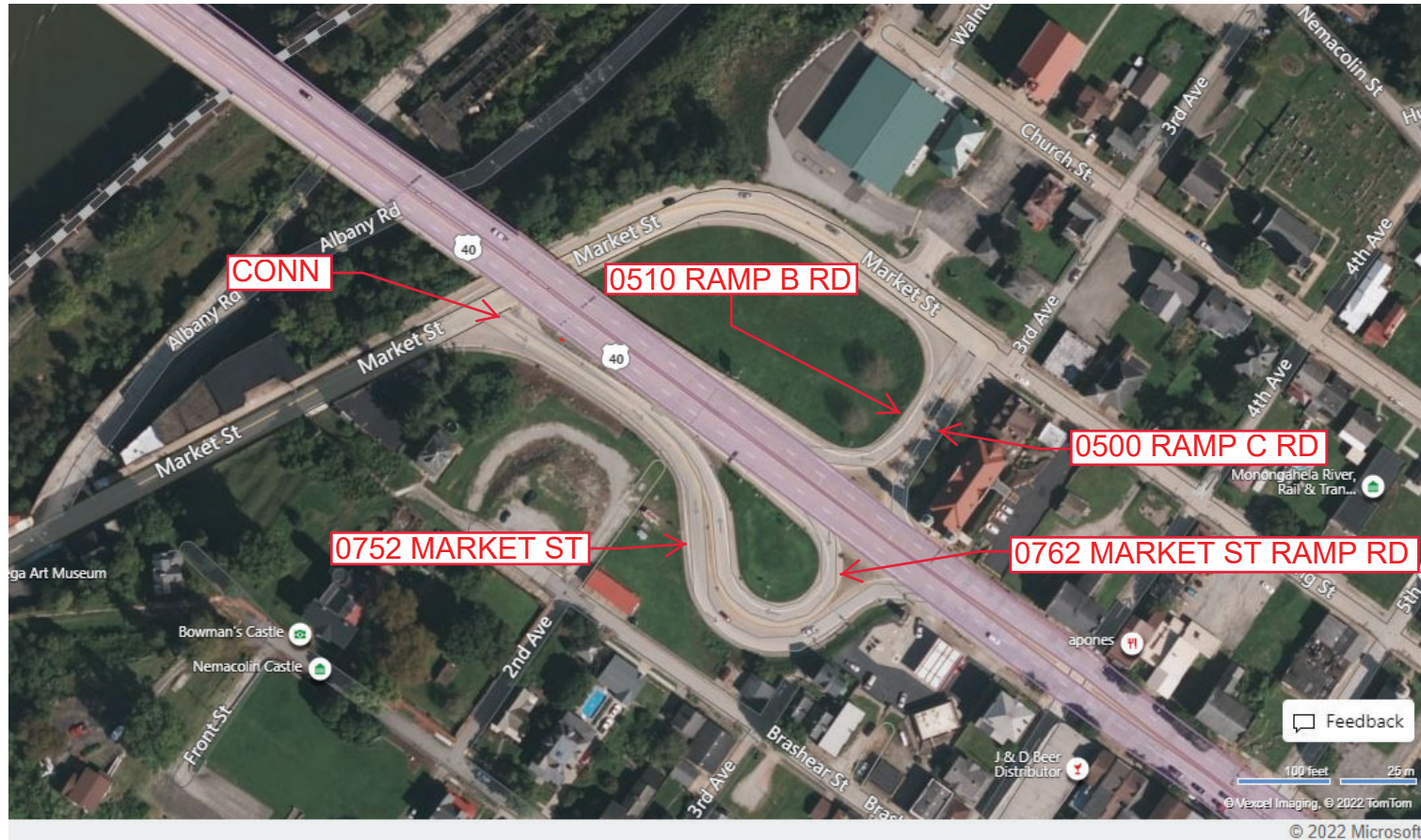
Ramp Segment Number and Ramp Segment Length Information:

Segment	Length	Segment	Length	Segment	Length	Segment	Length
0500	0217						
0510	0213						
0752	0665						
0762	0580						

Primary Route Interchange Exit Number

Secondary Route Interchange Exit Number

PennDOT Type 10 Map View:



Last Date Modified: Jun 24, 2022

County: 26

RMS Interchange Information

Bureau of Maintenance & Operations
Asset Management Division

Print Form



Interchange Number: 8003

Interchange Name: WALNUT HILL RD INT

Intersecting SR's: US 40 Geo C Marshall Py & SR 3009 Walnut Hill Rd

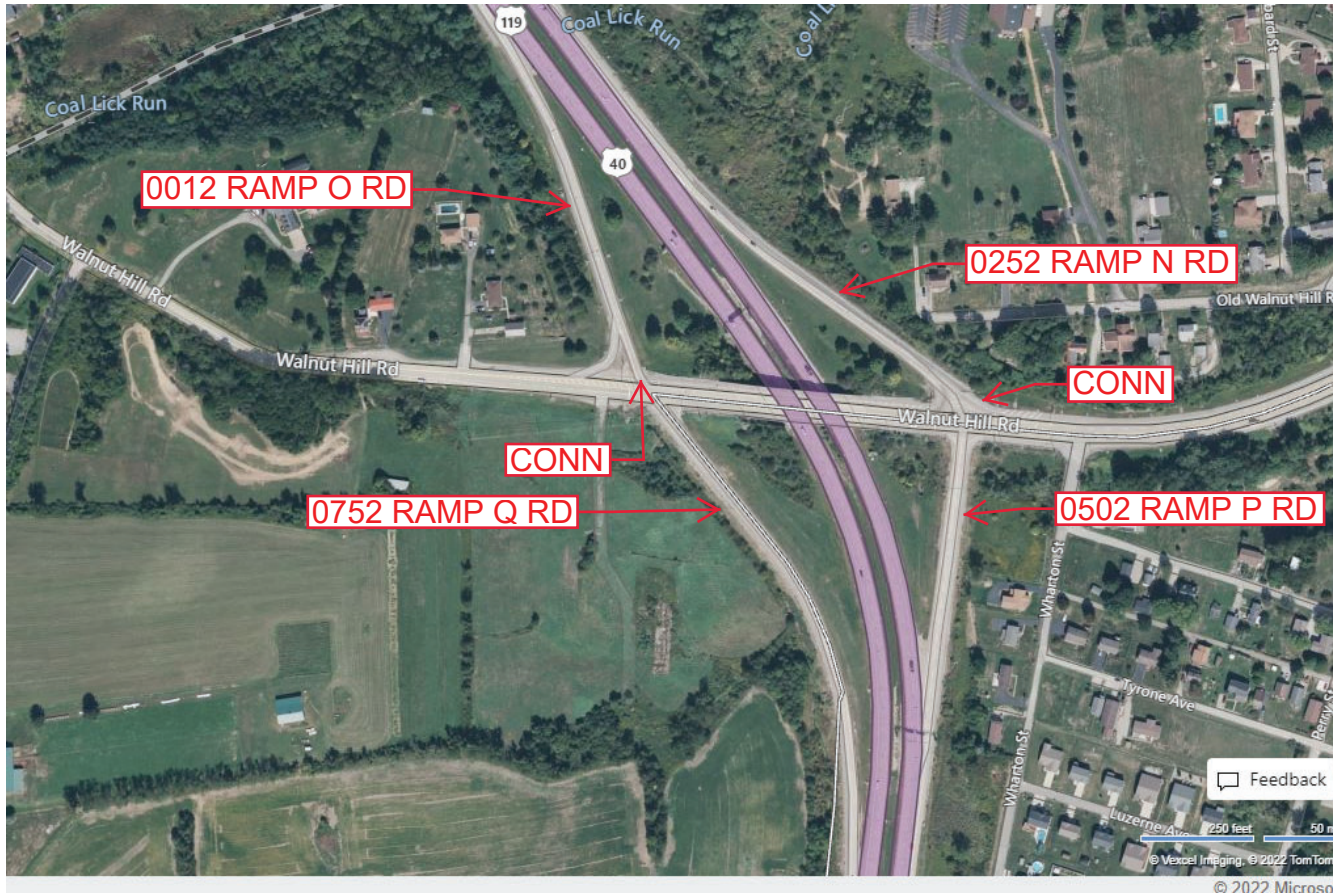
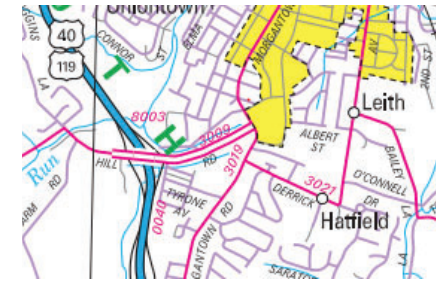
Ramp Segment Number and Ramp Segment Length Information:

Segment	Length	Segment	Length	Segment	Length	Segment	Length
0012	0816						
0252	0825						
0502	0515						
0752	1145						

Primary Route Interchange Exit Number

Secondary Route Interchange Exit Number

PennDOT Type 10 Map View:



Last Date Modified:

Jun 27, 2022

County: 26

RMS Interchange Information

Bureau of Maintenance & Operations
Asset Management Division

Print Form



Interchange Number: 8005

Interchange Name: CHERRY TREE INT

Intersecting SR's: US 40, PA 21 McClellandtown Rd & PRDR Matthew Dr

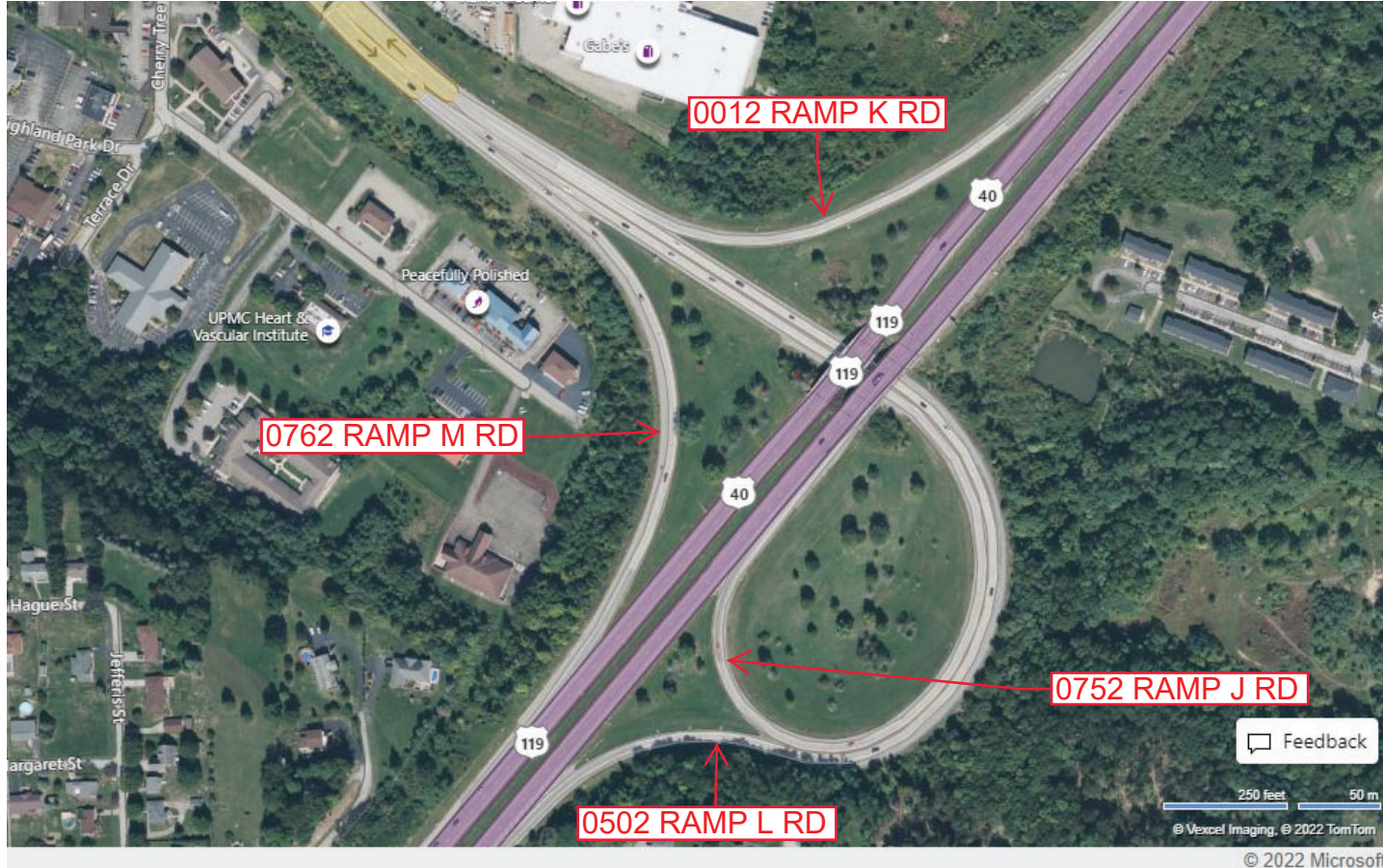
Ramp Segment Number and Ramp Segment Length Information:

Segment	Length	Segment	Length	Segment	Length	Segment	Length
0012	0950						
0502	3570						
0752	3375						
0762	0970						

Primary Route Interchange Exit Number

Secondary Route Interchange Exit Number

PennDOT Type 10 Map View:



Feedback

250 feet 50 m

© Vexcel Imaging, © 2022 TomTom

© 2022 Microsoft

Last Date Modified:

Jun 27, 2022

County: 26

RMS Interchange Information

Bureau of Maintenance & Operations
Asset Management Division

Print Form



Interchange Number: 8007

Interchange Name: MAIN ST INT

Intersecting SR's: US 40, US 119 & SR 2040 (Business 40) Main St

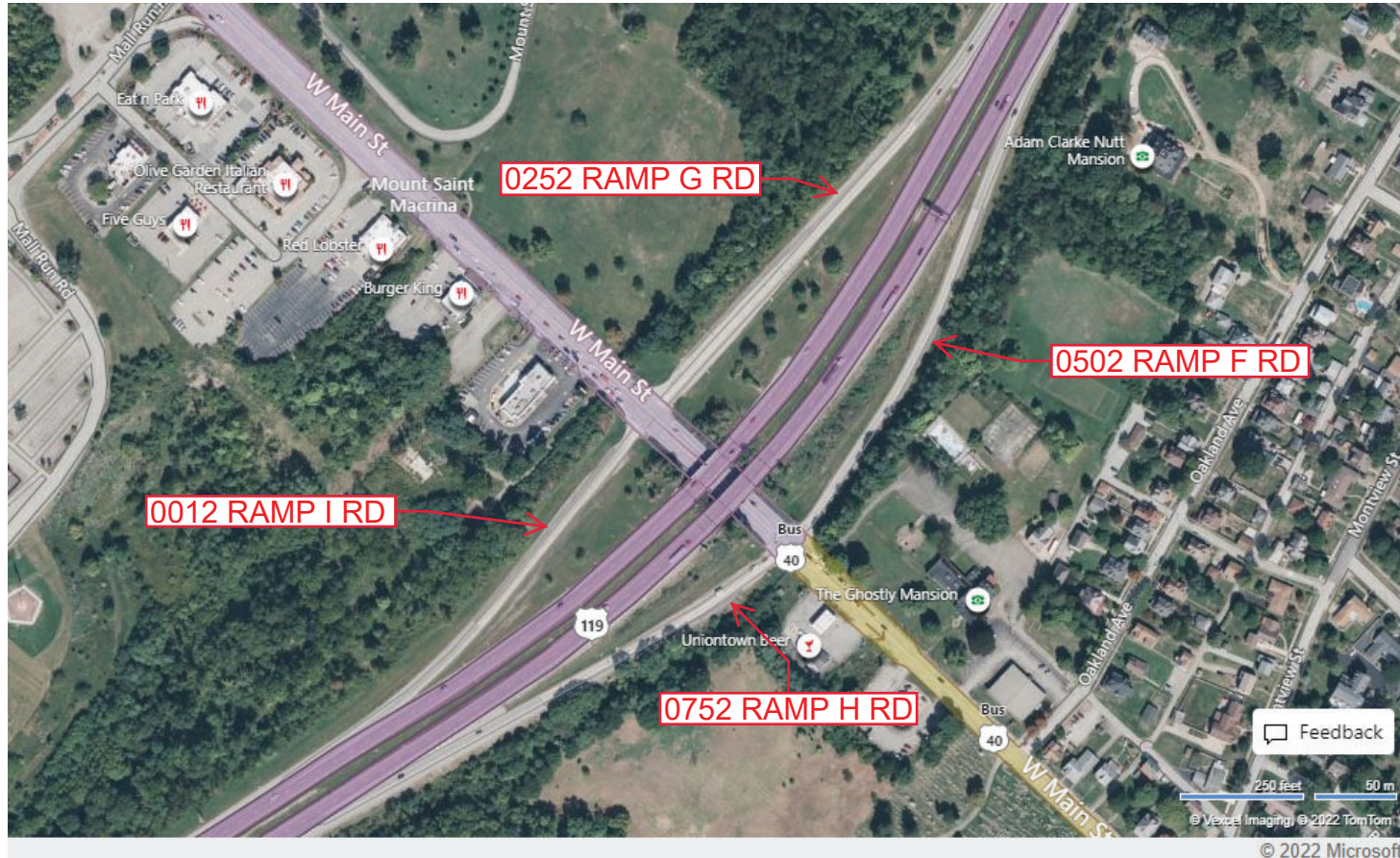
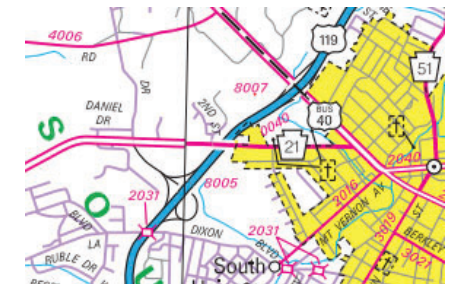
Ramp Segment Number and Ramp Segment Length Information:

Segment	Length	Segment	Length	Segment	Length	Segment	Length
0012	0776						
0252	1000						
0502	0959						
0752	0774						

Primary Route Interchange Exit Number

Secondary Route Interchange Exit Number

PennDOT Type 10 Map View:



Feedback
250 feet 50 m
© Vexcel Imaging © 2022 TomTom
© 2022 Microsoft

Last Date Modified: Jun 27, 2022

County: 26

RMS Interchange Information

Print Form

Bureau of Maintenance & Operations
Asset Management Division



Interchange Number: 8008

Interchange Name: HOPWOOD INT

Intersecting SR's: US 40, SR 2040, SR 3027 & T455 Bennington Rd

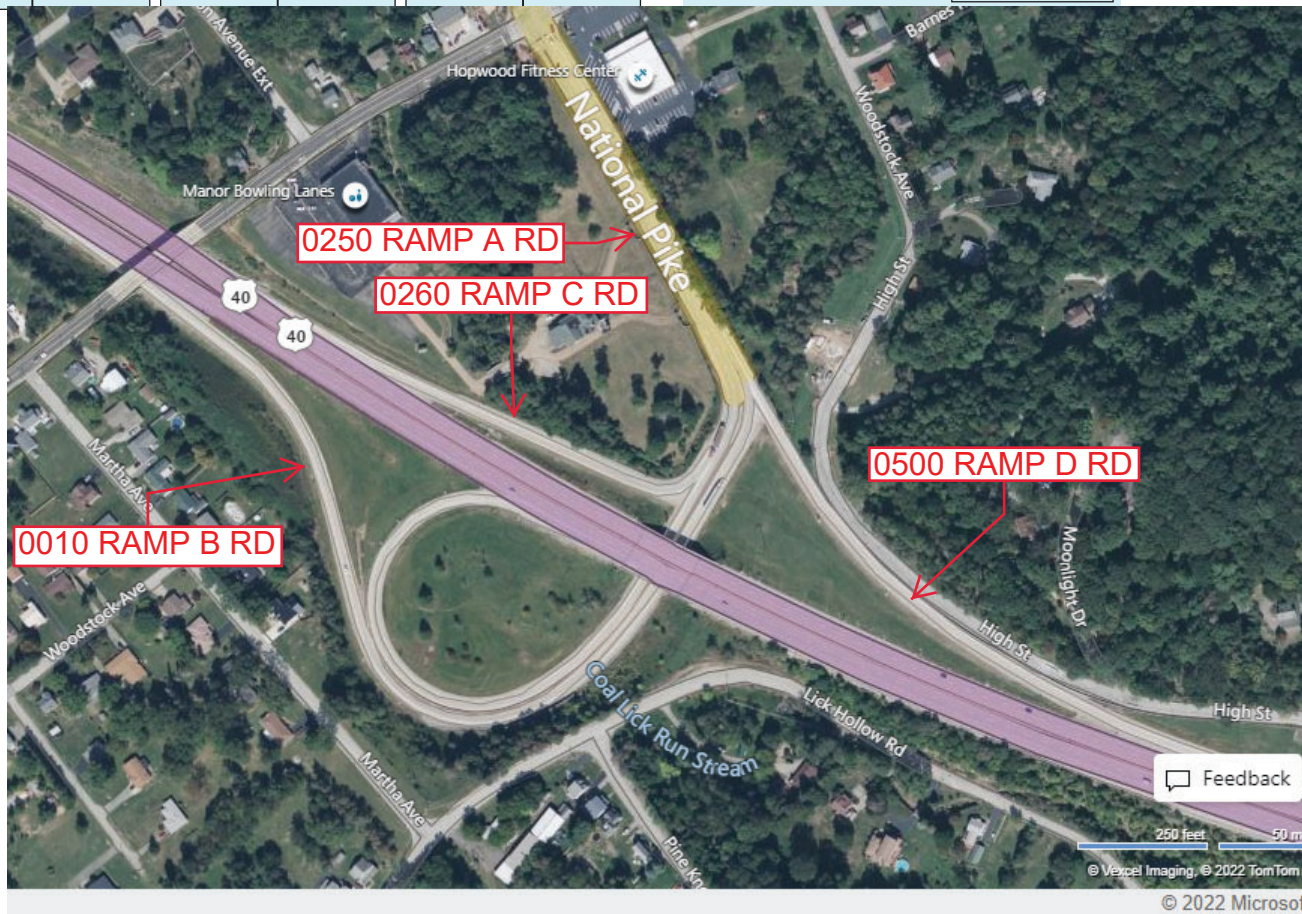
Ramp Segment Number and Ramp Segment Length Information:

Segment	Length	Segment	Length	Segment	Length	Segment	Length
0010	1894						
0250	2380						
0260	0545						
0500	1875						

Primary Route Interchange Exit Number

Secondary Route Interchange Exit Number

PennDOT Type 10 Map View:



Feedback

250 feet 50 m

© Vexcel Imaging, © 2022 TomTom

© 2022 Microsoft

Last Date Modified:

Jun 27, 2022

County: 26

RMS Interchange Information

Print Form

Bureau of Maintenance & Operations
Asset Management Division



Interchange Number: 8009

Interchange Name: PITTSBURGH ST INT

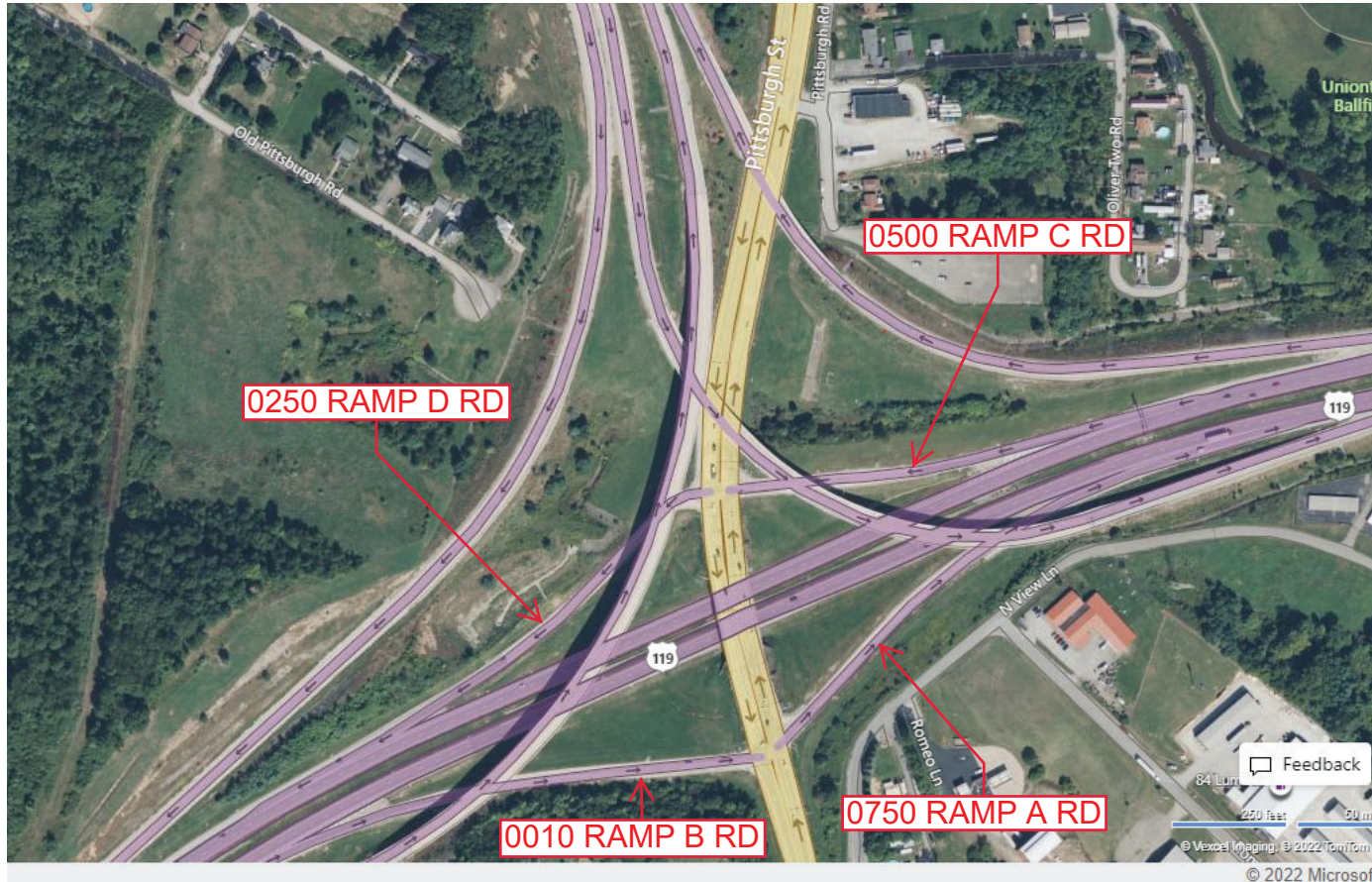
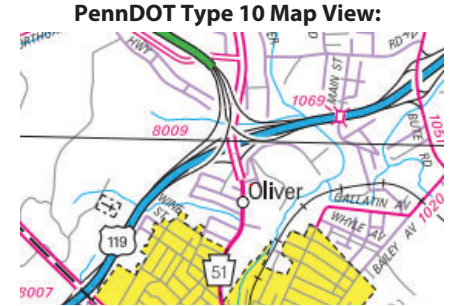
Intersecting SR's: US 119 Geo C Marshall Py & PA 51 Pittsburgh St

Ramp Segment Number and Ramp Segment Length Information:

Segment	Length	Segment	Length	Segment	Length	Segment	Length
0010	0922						
0250	0775						
0500	0610						
0750	0790						

Primary Route Interchange Exit Number: 14

Secondary Route Interchange Exit Number



Last Date Modified: Jun 28, 2022

County: 26

RMS Interchange Information

Bureau of Maintenance & Operations
Asset Management Division

Print Form



Interchange Number: 8011

Interchange Name: BUTE RD INT

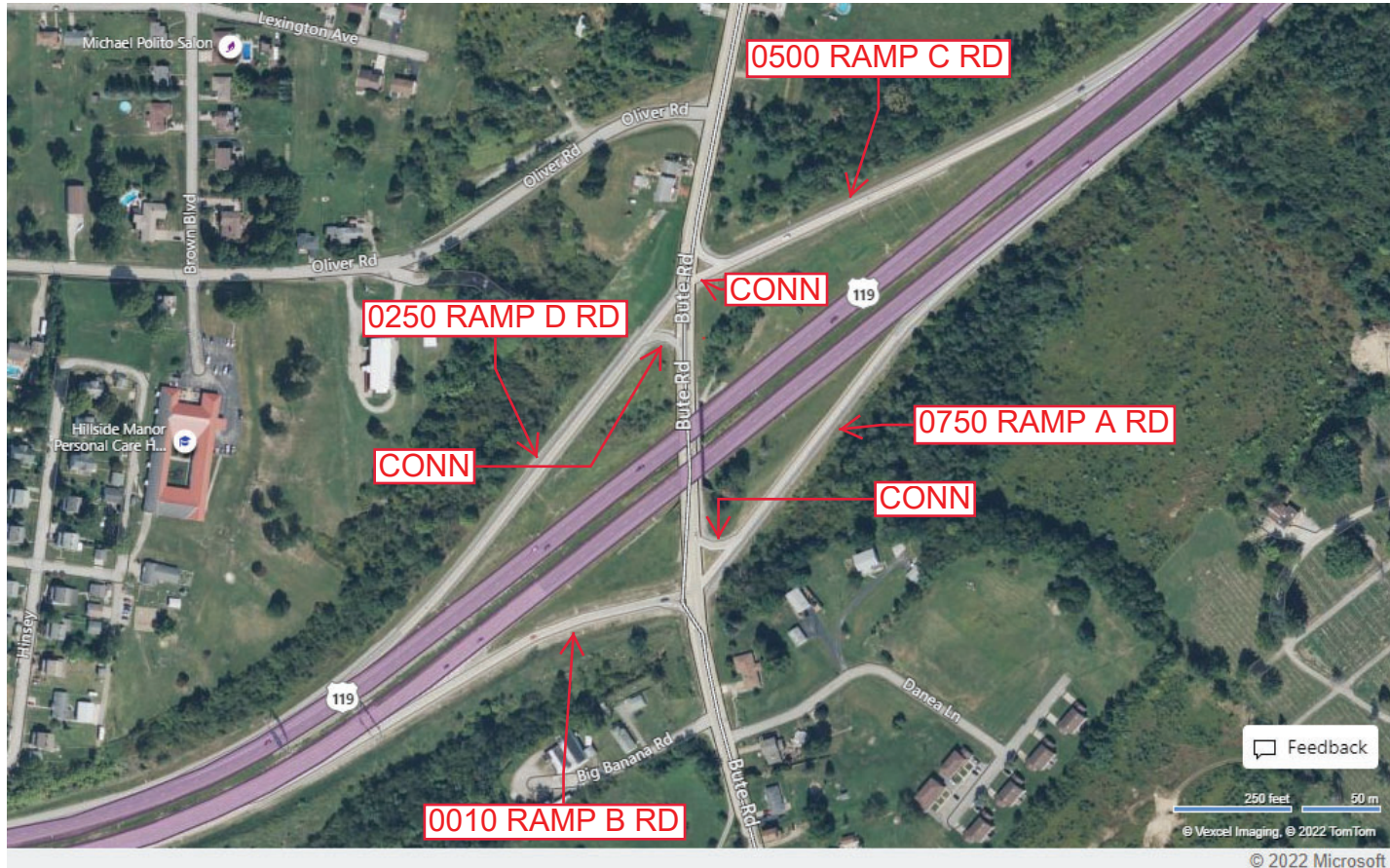
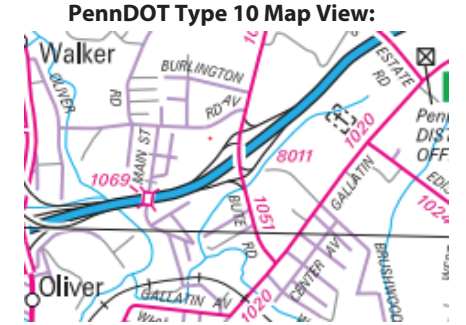
Intersecting SR's: US 119 Geo C Marshall Py & SR 1051 Bute Rd

Ramp Segment Number and Ramp Segment Length Information:

Segment	Length	Segment	Length	Segment	Length	Segment	Length
0010	0545						
0250	1105						
0500	0995						
0750	0733						

Primary Route Interchange Exit Number

Secondary Route Interchange Exit Number



Feedback

250 feet 50 m

© Vexcel Imaging, © 2022 TomTom

© 2022 Microsoft

Last Date Modified: Jun 28, 2022

County: 26

RMS Interchange Information

Bureau of Maintenance & Operations
Asset Management Division

Print Form



Interchange Number: 8013

Interchange Name: BETHELBORO INT

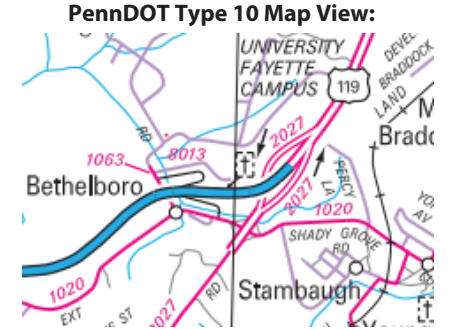
Intersecting SR's: US 119, SR 1020 Gallatin Ext Av & SR 1063 Bethelboro Rd

Ramp Segment Number and Ramp Segment Length Information:

Segment	Length	Segment	Length	Segment	Length	Segment	Length
0500	1540						
0750	0984						

Primary Route Interchange Exit Number

Secondary Route Interchange Exit Number



Last Date Modified: Jun 28, 2022

County: 26

RMS Interchange Information

Print Form

Bureau of Maintenance & Operations
Asset Management Division



Interchange Number: 8017

Interchange Name: PENNSVILLE INT

Intersecting SR's: US 119 Memorial Bl & SR 1029 Everson Rd

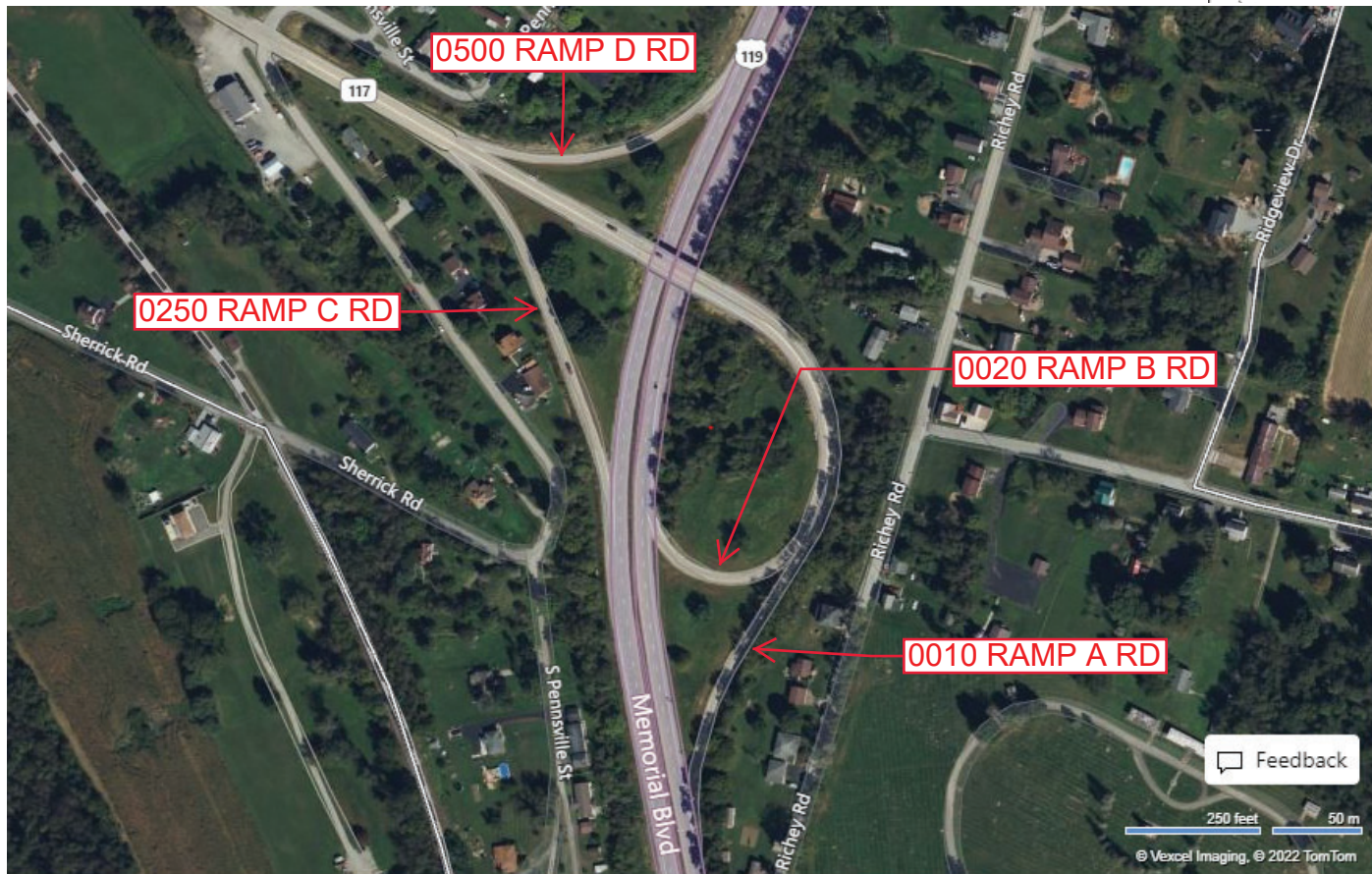
Ramp Segment Number and Ramp Segment Length Information:

Segment	Length	Segment	Length	Segment	Length	Segment	Length
0010	1142						
0020	0917						
0250	0638						
0500	0473						

Primary Route Interchange Exit Number

Secondary Route Interchange Exit Number

PennDOT Type 10 Map View:



Feedback

250 feet 50 m

© Vexcel Imaging, © 2022 TomTom

© 2022 Microsoft

Last Date Modified: Jun 29, 2022

County: 26

RMS Interchange Information

Print Form

Bureau of Maintenance & Operations
Asset Management Division



Interchange Number: 8019

Interchange Name: STAR JUNCTION INT

Intersecting SR's: PA 51 Pittsburgh Rd & PA 201 Gillespie Rd

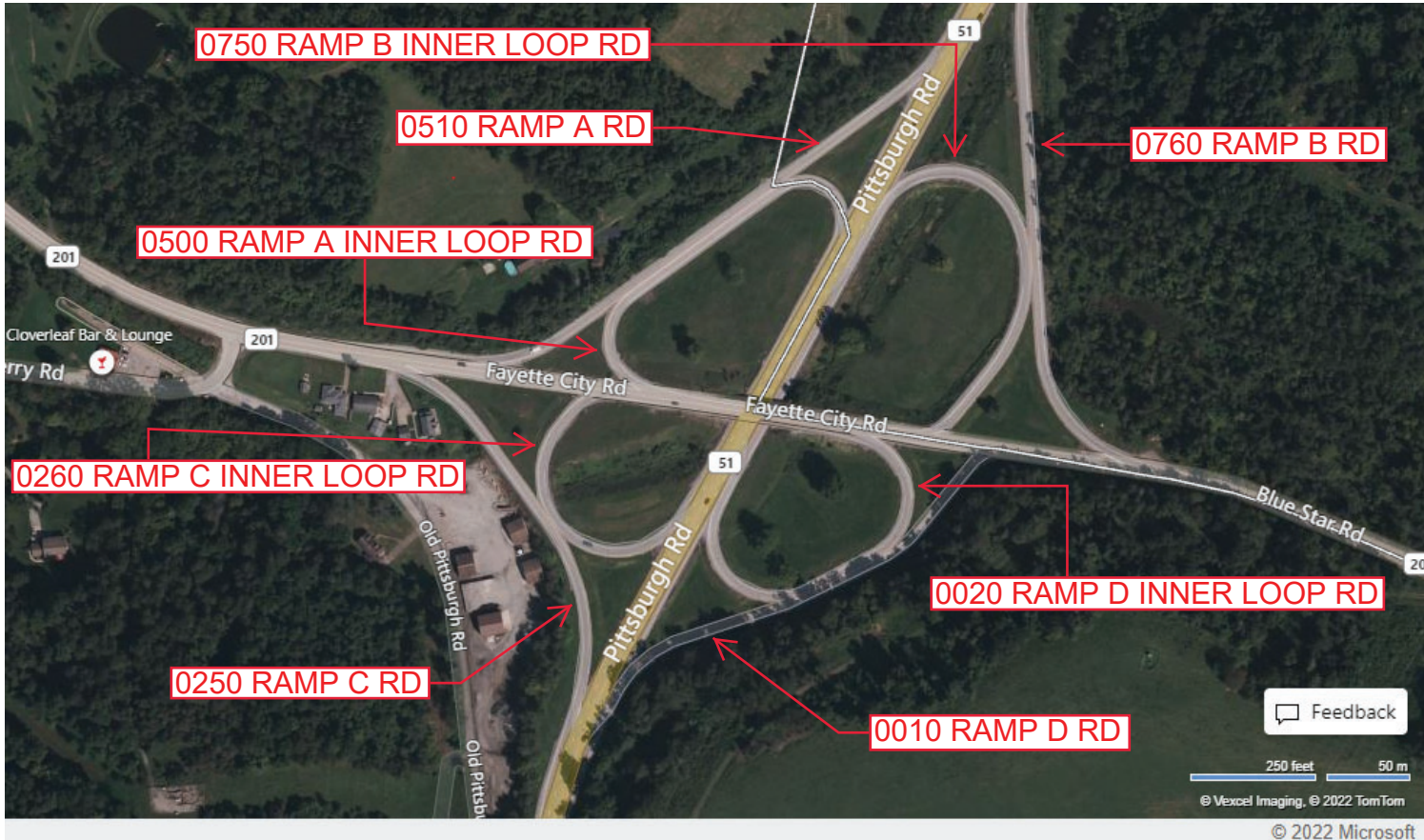
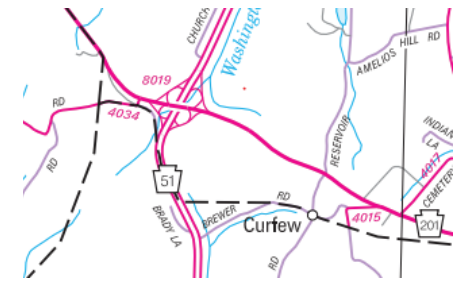
Ramp Segment Number and Ramp Segment Length Information:

Segment	Length	Segment	Length	Segment	Length	Segment	Length
0010	0849	0510	0995				
0020	0682	0750	0795				
0250	0739	0760	1105				
0260	0515						
0500	0739						

Primary Route Interchange Exit Number

Secondary Route Interchange Exit Number

PennDOT Type 10 Map View:



Feedback

250 feet 50 m
© Vexcel Imaging, © 2022 TomTom

© 2022 Microsoft

Last Date Modified: Jun 29, 2022

County: 26

RMS Interchange Information

Bureau of Maintenance & Operations
Asset Management Division

Print Form



Interchange Number: 8021

Interchange Name: MASONTOWN INT

Intersecting SR's: PA 21 Roy E Furman Hw & PA 166 Main St

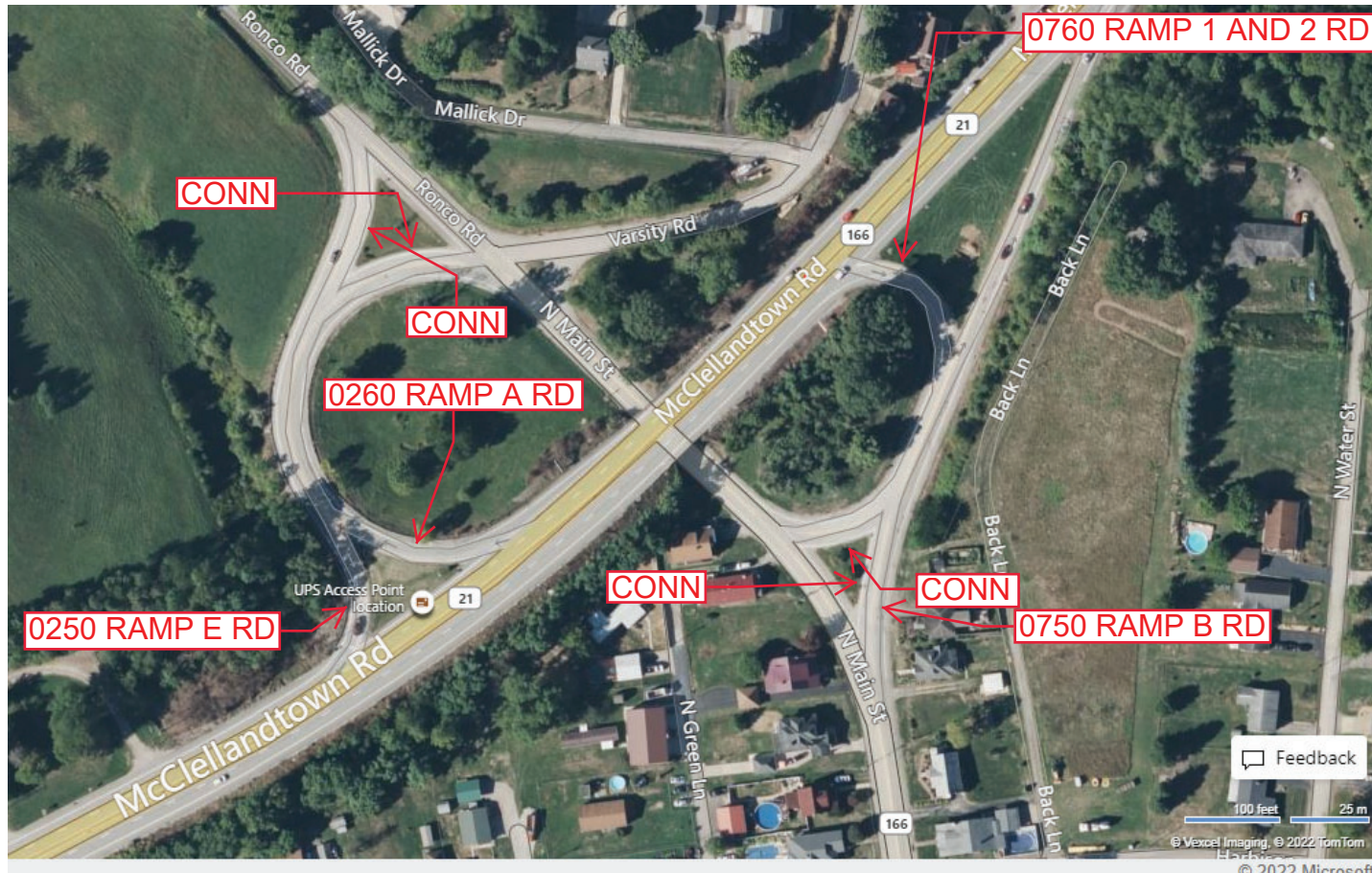
Ramp Segment Number and Ramp Segment Length Information:

Segment	Length	Segment	Length	Segment	Length	Segment	Length
0250	0540						
0260	0525						
0750	0635						
0760	0395						

Primary Route Interchange Exit Number

Secondary Route Interchange Exit Number

PennDOT Type 10 Map View:



Feedback
100 feet 25 m
© Vexcel Imaging, © 2022 TomTom
© 2022 Microsoft

Last Date Modified: Jun 29, 2022

County: 26

RMS Interchange Information

Bureau of Maintenance & Operations
Asset Management Division

Print Form



Interchange Number: 8023

Interchange Name: FAIRCHANCE INT

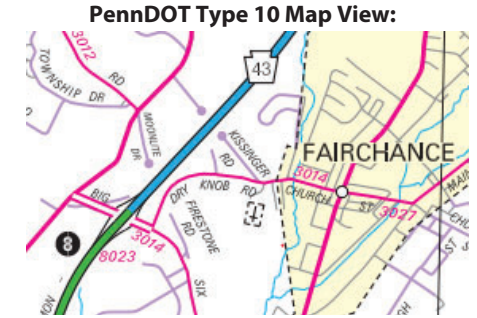
Intersecting SR's: PA Turnpike, PA 43 & SR 3014 Big Six Rd

Ramp Segment Number and Ramp Segment Length Information:

Segment	Length	Segment	Length	Segment	Length	Segment	Length
0500	0900						
0750	0659						

Primary Route Interchange Exit Number: 8

Secondary Route Interchange Exit Number



Feedback
250 feet 50 m
© Vexcel Imaging, © 2022 TomTom

© 2022 Microsoft

Last Date Modified: Jun 30, 2022

County: 26

RMS Interchange Information

Print Form

Bureau of Maintenance & Operations
Asset Management Division



Interchange Number: 8025

Interchange Name: CHADVILLE INT

Intersecting SR's: US 119, PA 43 & PA 857 Georges Fairchance Rd

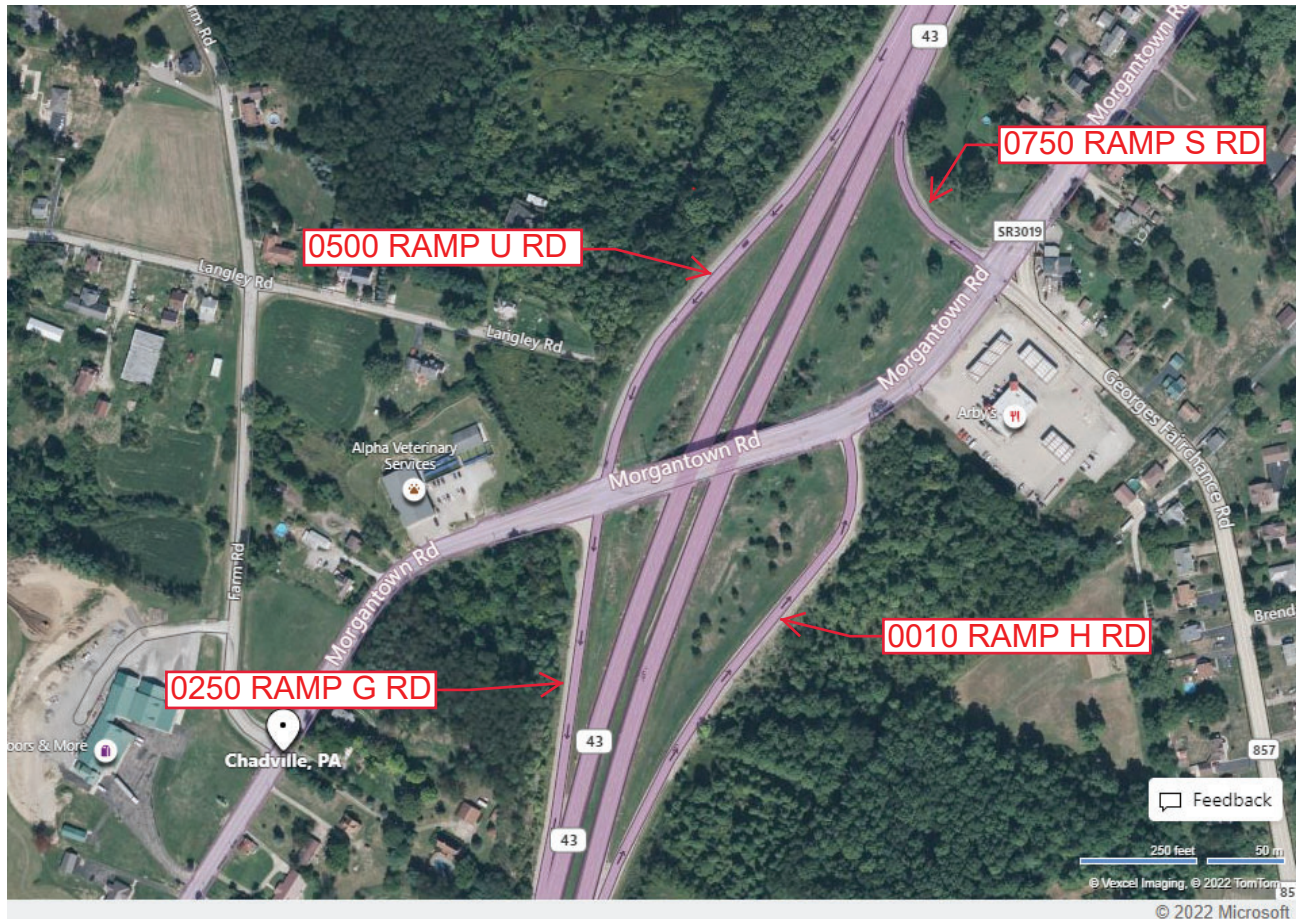
Ramp Segment Number and Ramp Segment Length Information:

Segment	Length	Segment	Length	Segment	Length	Segment	Length
0010	1185						
0250	0643						
0500	0980						
0750	0360						

Primary Route Interchange Exit Number

Secondary Route Interchange Exit Number

PennDOT Type 10 Map View:



Feedback

© 2022 Microsoft

Last Date Modified: Jun 30, 2022

County: 26

RMS Interchange Information

Print Form

Interchange Number: 9101

Bureau of Maintenance & Operations
Asset Management Division



Interchange Name: (WYE) CRAWFORD AV

Intersecting SR's: US 119 Memorial Bl & SR 1073 Crawford Av

Ramp Segment Number and Ramp Segment Length Information:

Segment	Length	Segment	Length	Segment	Length	Segment	Length
0010	0273						

Primary Route Interchange Exit Number

Secondary Route Interchange Exit Number

PennDOT Type 10 Map View:



Last Date Modified: Jun 30, 2022

County: 26

RMS Interchange Information

Print Form

Interchange Number: 9103

Bureau of Maintenance & Operations
Asset Management Division



Interchange Name: US 119 & SR 1037

Intersecting SR's: US 119 Memorial Blvd & SR 1037 Pittsburgh St

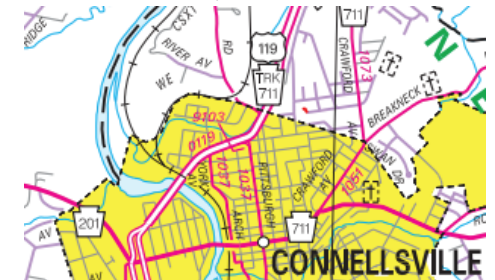
Ramp Segment Number and Ramp Segment Length Information:

Segment	Length	Segment	Length	Segment	Length	Segment	Length
0250	0254						

Primary Route
Interchange Exit
Number

Secondary Route
Interchange Exit
Number

PennDOT Type 10 Map View:



Feedback

100 feet 25 m

© Vexcel Imaging © 2022 TomTom © 2022 Microsoft

Last Date Modified:

Jun 30, 2022

County: 26

RMS Interchange Information

Print Form

Bureau of Maintenance & Operations
Asset Management Division



Interchange Number: 9111

Interchange Name: ROY E FURMAN HW (WYE)

Intersecting SR's: PA 21 Roy E Furman Hw & PA 166 Edenborn Rd

Ramp Segment Number and Ramp Segment Length Information:

Segment	Length	Segment	Length	Segment	Length	Segment	Length
0010	0230						

Primary Route Interchange Exit Number

Secondary Route Interchange Exit Number

PennDOT Type 10 Map View:



Feedback

100 feet 25 m
© Vexcel Imaging, © 2022 TomTom

© 2022 Microsoft

Last Date Modified: Jul 1, 2022

County: 26

RMS Interchange Information

Bureau of Maintenance & Operations
Asset Management Division

Print Form



Interchange Number: 9202

Interchange Name: S UNION TWP BLUE STAR POINT LOOKOUT

Intersecting SR's: US 40 National Park

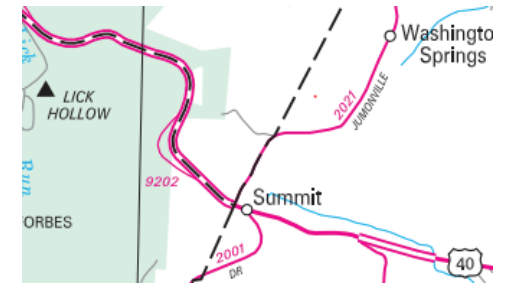
Ramp Segment Number and Ramp Segment Length Information:

Segment	Length	Segment	Length	Segment	Length	Segment	Length
0010	0351						

Primary Route Interchange Exit Number

Secondary Route Interchange Exit Number

PennDOT Type 10 Map View:



Last Date Modified:

Jul 1, 2022

County: 26

RMS Interchange Information

Print Form

Bureau of Maintenance & Operations
Asset Management Division



Interchange Number: 9301

Interchange Name: S UNION TWP TRUCK ESCAPE RAMP

Intersecting SR's: US 40 National Park

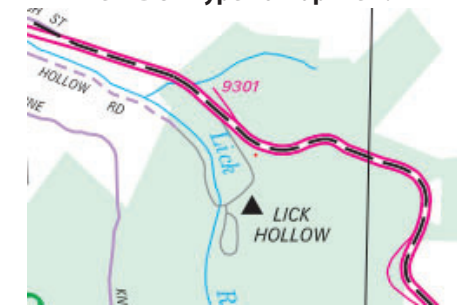
Ramp Segment Number and Ramp Segment Length Information:

Segment	Length	Segment	Length	Segment	Length	Segment	Length
0010	0543						

Primary Route Interchange Exit Number

Secondary Route Interchange Exit Number

PennDOT Type 10 Map View:



Feedback

100 feet 25 m
© Vexcel Imaging, © 2022 TomTom

© 2022 Microsoft

Last Date Modified:

Jul 1, 2022

County: 26

RMS Interchange Information

Bureau of Maintenance & Operations
Asset Management Division

Print Form



Interchange Number: 9302

Interchange Name: TRUCK ESCAPE RAMP

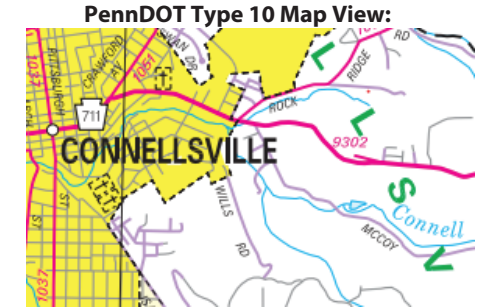
Intersecting SR's: PA 711 Springfield Pike

Ramp Segment Number and Ramp Segment Length Information:

Segment	Length	Segment	Length	Segment	Length	Segment	Length
0010	0640						

Primary Route Interchange Exit Number

Secondary Route Interchange Exit Number



Feedback

100 feet 25 m

© Vexcel Imaging, © 2022 TomTom

© 2022 Microsoft

Last Date Modified: Jul 1, 2022

County: 26

RMS Interchange Information

Print Form

Bureau of Maintenance & Operations
Asset Management Division



Interchange Number: 9401

Interchange Name: PA 31 & PA 982

Intersecting SR's: PA 31 Three Mile Hill Rd(C64) & 982 Pleasant Valley Rd

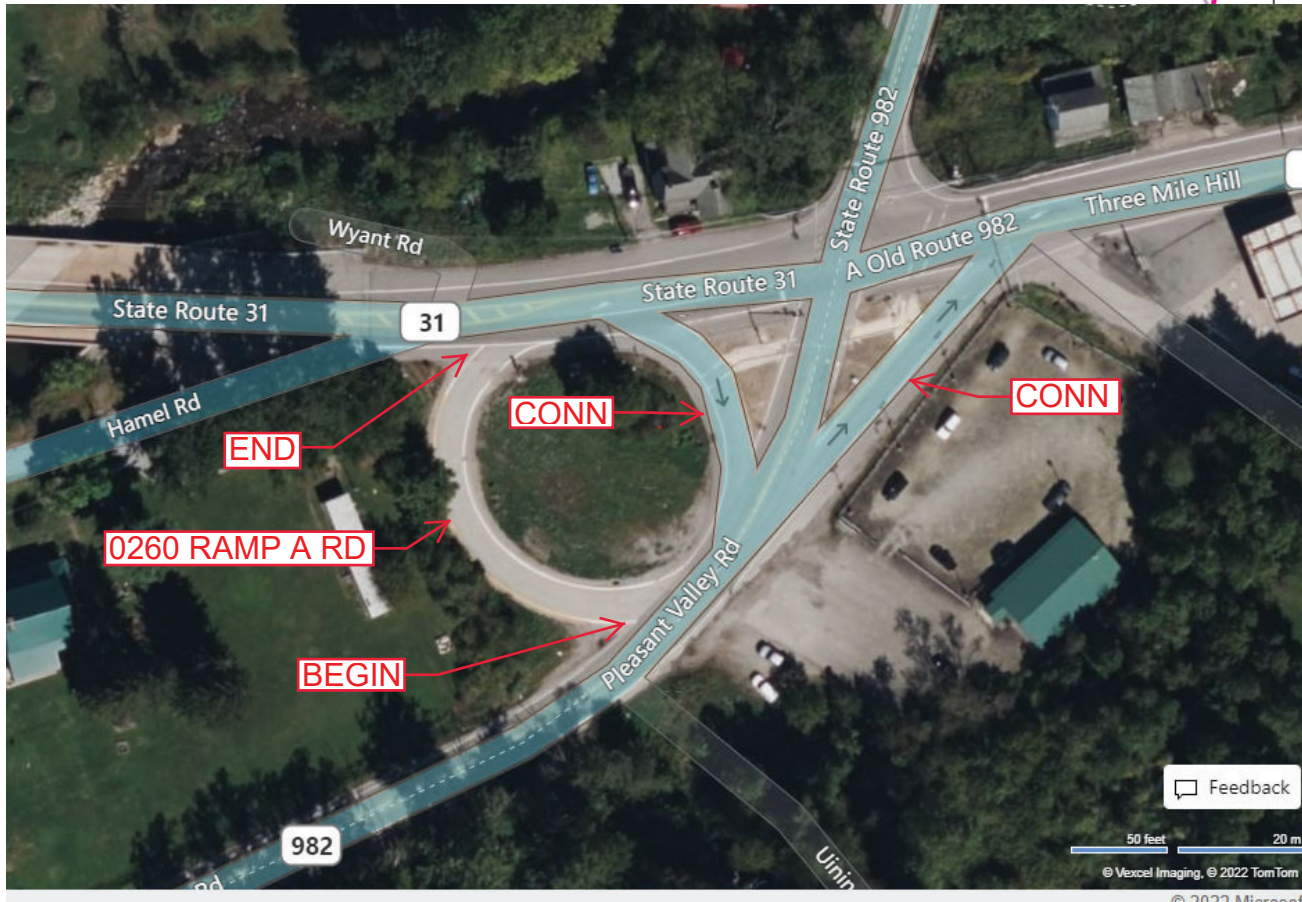
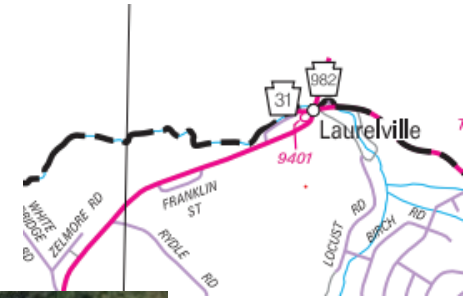
Ramp Segment Number and Ramp Segment Length Information:

Segment	Length	Segment	Length	Segment	Length	Segment	Length
0260	0180						

Primary Route Interchange Exit Number

Secondary Route Interchange Exit Number

PennDOT Type 10 Map View:



Feedback

50 Feet 20 m
© Vexcel Imaging, © 2022 TomTom

© 2022 Microsoft

Last Date Modified:

Jul 5, 2022

County: 26

RMS Interchange Information

Print Form

Bureau of Maintenance & Operations
Asset Management Division



Interchange Number: 9403

Interchange Name: ACCESS DRIVEWAY

Intersecting SR's: SR 3009 Old Frame Rd

Ramp Segment Number and Ramp Segment Length Information:

Segment	Length	Segment	Length	Segment	Length	Segment	Length
0750	0150						

Primary Route Interchange Exit Number

Secondary Route Interchange Exit Number

PennDOT Type 10 Map View:



Last Date Modified: Jul 5, 2022