

County: 30

# RMS Interchange Information

Bureau of Maintenance & Operations  
Asset Management Division

Print Form



Interchange Number: 8001

Interchange Name: MOUNT MORRIS INT

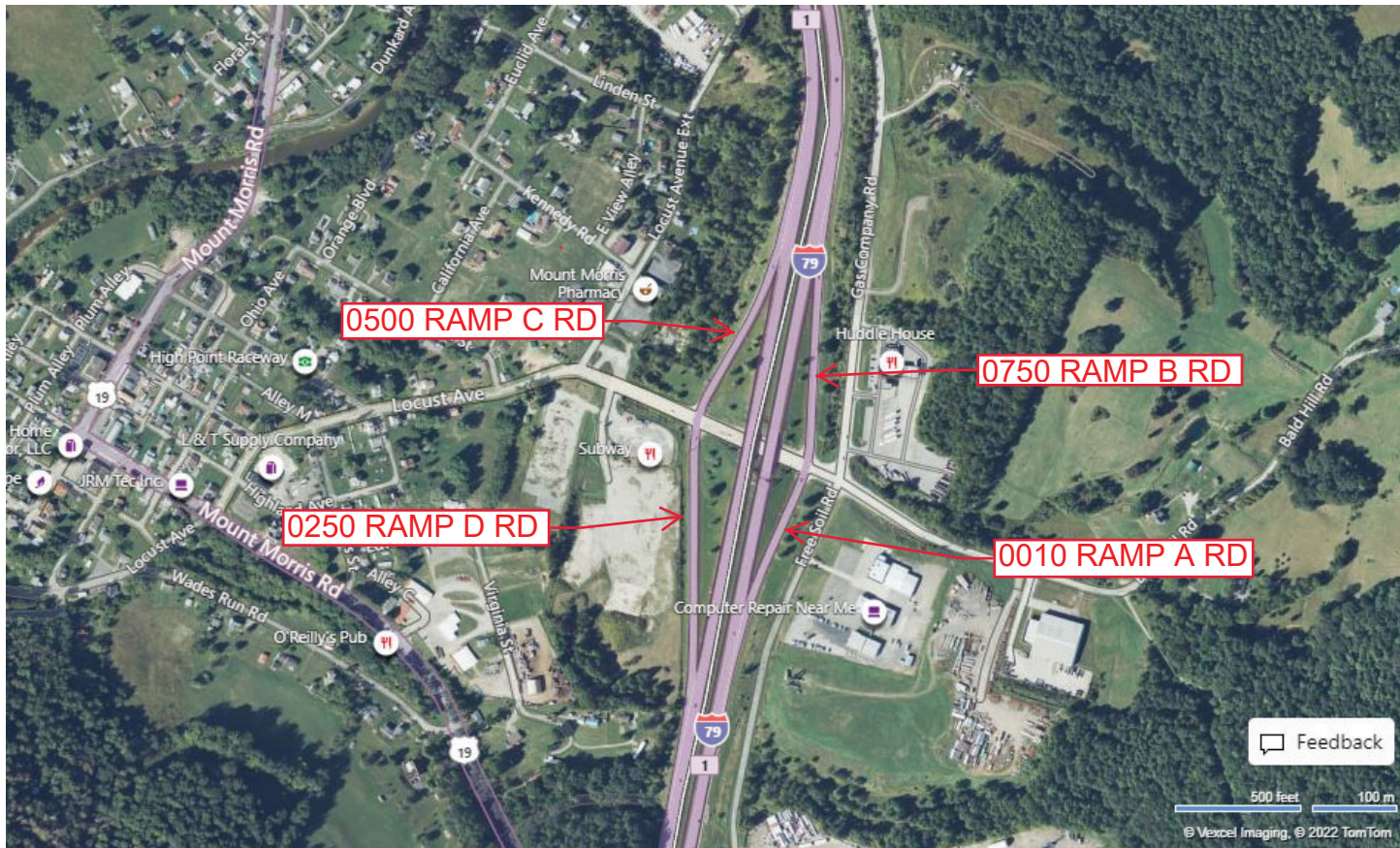
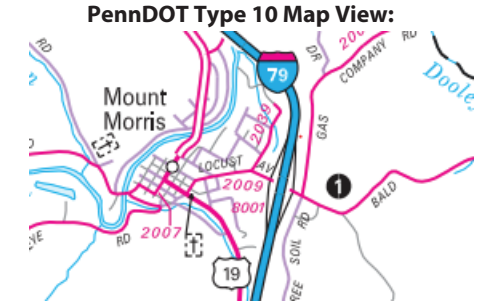
Intersecting SR's: I-79 & SR 2009 Locust Av

Ramp Segment Number and Ramp Segment Length Information:

Segment	Length	Segment	Length	Segment	Length	Segment	Length
0010	0559						
0250	1015						
0500	0760						
0750	0840						

Primary Route Interchange Exit Number: 1

Secondary Route Interchange Exit Number:



Feedback

500 feet 100 m

© Vexcel Imaging, © 2022 TomTom

© 2022 Microsoft

Last Date Modified: Jul 5, 2022

County: 30

# RMS Interchange Information

Print Form

Bureau of Maintenance & Operations  
Asset Management Division



Interchange Number: 8003

Interchange Name: KIRBY INT

Intersecting SR's: I-79 & SR 2018 Kirby Garards Fort Rd

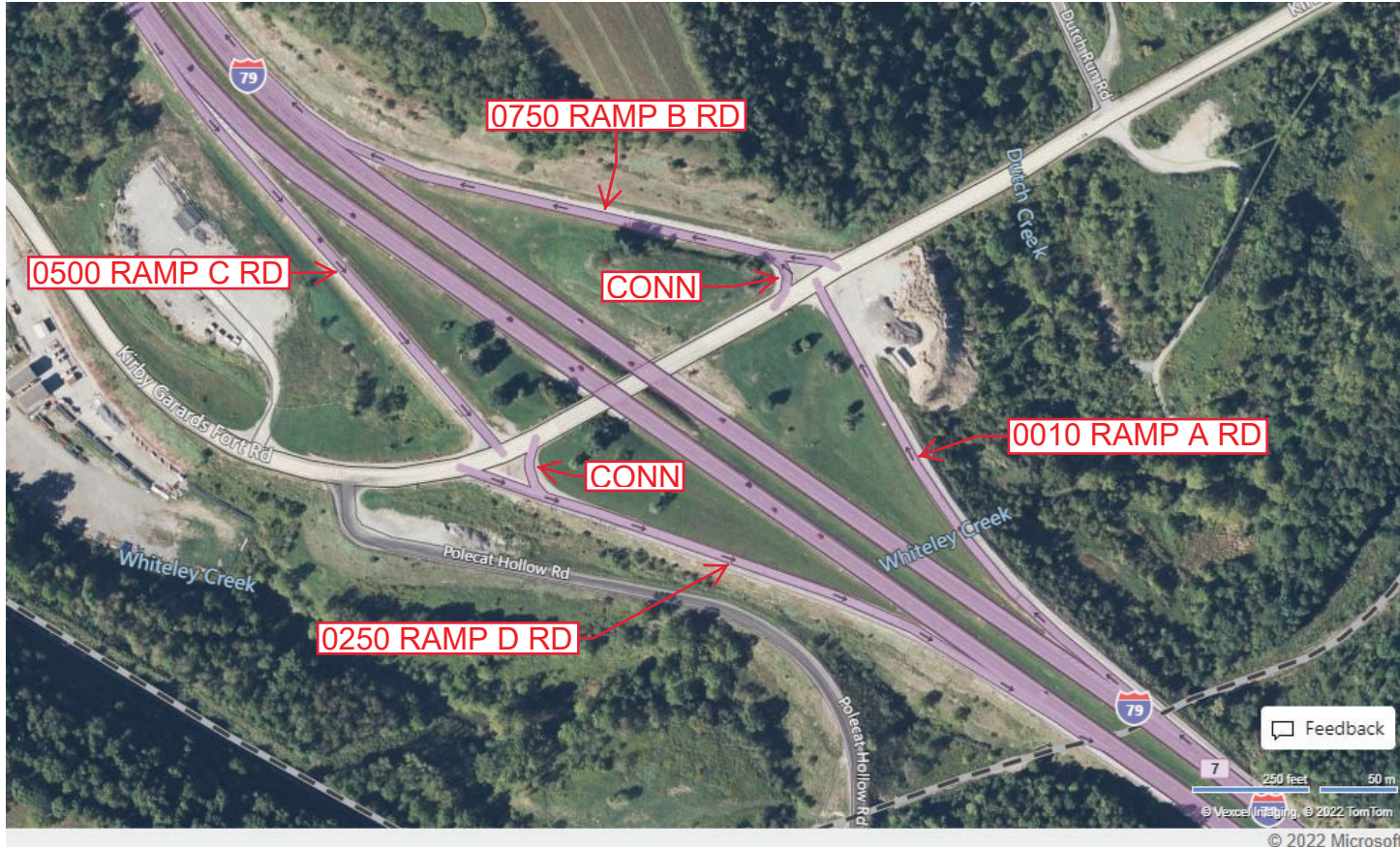
Ramp Segment Number and Ramp Segment Length Information:

Segment	Length	Segment	Length	Segment	Length	Segment	Length
0010	1008						
0250	1035						
0500	0924						
0750	1075						

Primary Route Interchange Exit Number: 7

Secondary Route Interchange Exit Number:

PennDOT Type 10 Map View:



Feedback

250 feet 50 m

© 2022 Microsoft

Last Date Modified: Jul 5, 2022

County: 30

# RMS Interchange Information

Print Form

Bureau of Maintenance & Operations  
Asset Management Division



Interchange Number: 8005

Interchange Name: WAYNESBURG INT

Intersecting SR's: I-79 & PA 21 Roy E Furman HW

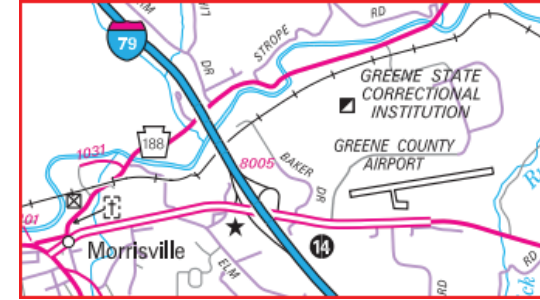
Ramp Segment Number and Ramp Segment Length Information:

Segment	Length	Segment	Length	Segment	Length	Segment	Length
0250	1115						
0500	0649						
0510	0200						
0750	1253						
0760	1418						

Primary Route Interchange Exit Number: 14

Secondary Route Interchange Exit Number

PennDOT Type 10 Map View:



Privacy Choices Consumer Health Privacy

Last Date Modified:

Jan 10, 2025

County: 30

# RMS Interchange Information

Print Form

Bureau of Maintenance & Operations  
Asset Management Division



Interchange Number: 8007

Interchange Name: RUFF CREEK INT

Intersecting SR's: I-79 & US 19 Washington Rd & PA 221 Lippincott Rd

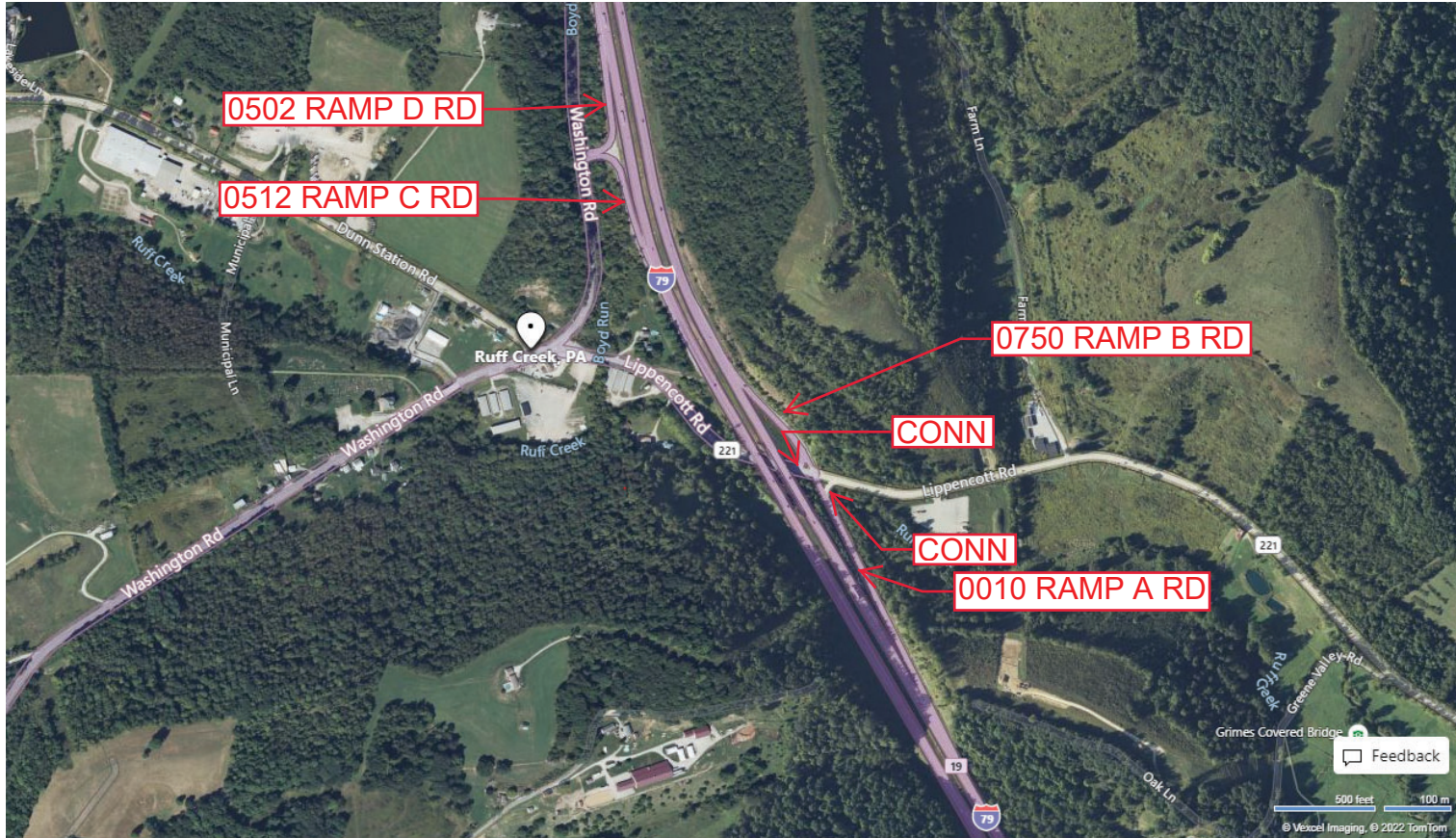
Ramp Segment Number and Ramp Segment Length Information:

Segment	Length	Segment	Length	Segment	Length	Segment	Length
0010	1186						
0502	0608						
0512	0632						
0750	0569						

Primary Route Interchange Exit Number: 19

Secondary Route Interchange Exit Number

PennDOT Type 10 Map View:



© 2022 Microsoft

Last Date Modified: Jul 6, 2022

County: 30

# RMS Interchange Information

Print Form

Bureau of Maintenance & Operations  
Asset Management Division



Interchange Number: 9101

Interchange Name: (WYE) US 19 & PA 199

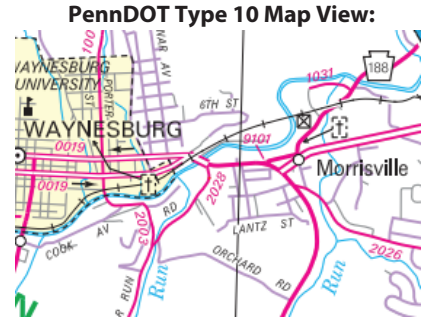
Intersecting SR's: US 19 E High St & PA 199 Bill George Dr

Ramp Segment Number and Ramp Segment Length Information:

Segment	Length	Segment	Length	Segment	Length	Segment	Length
0010	0200						

Primary Route Interchange Exit Number

Secondary Route Interchange Exit Number



Feedback

50 feet 20 m 2' © 2022 Microsoft

Last Date Modified:

Jul 6, 2022

County: 30

# RMS Interchange Information

Bureau of Maintenance & Operations  
Asset Management Division

Print Form



Interchange Number: 9202

Interchange Name: NORTH WELCOME CTR

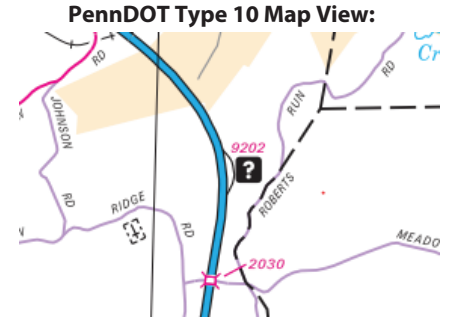
Intersecting SR's: I-79 North Welcome CTR

Ramp Segment Number and Ramp Segment Length Information:

Segment	Length	Segment	Length	Segment	Length	Segment	Length
0010	1740						
0020	0227						

Primary Route Interchange Exit Number

Secondary Route Interchange Exit Number



Feedback

250 feet 50 m

© Vexcel Imaging, © 2022 TomTom

© 2022 Microsoft

Last Date Modified: Jul 7, 2022

County: 30

# RMS Interchange Information

Print Form

Bureau of Maintenance & Operations  
Asset Management Division



Interchange Number: 9400

Interchange Name: DETOUR RAMP RD (CLOSED TO TRAFFIC)

Intersecting SR's: SR 2006 Davistown Rd & SR 2026 Rolling Meadows Rd

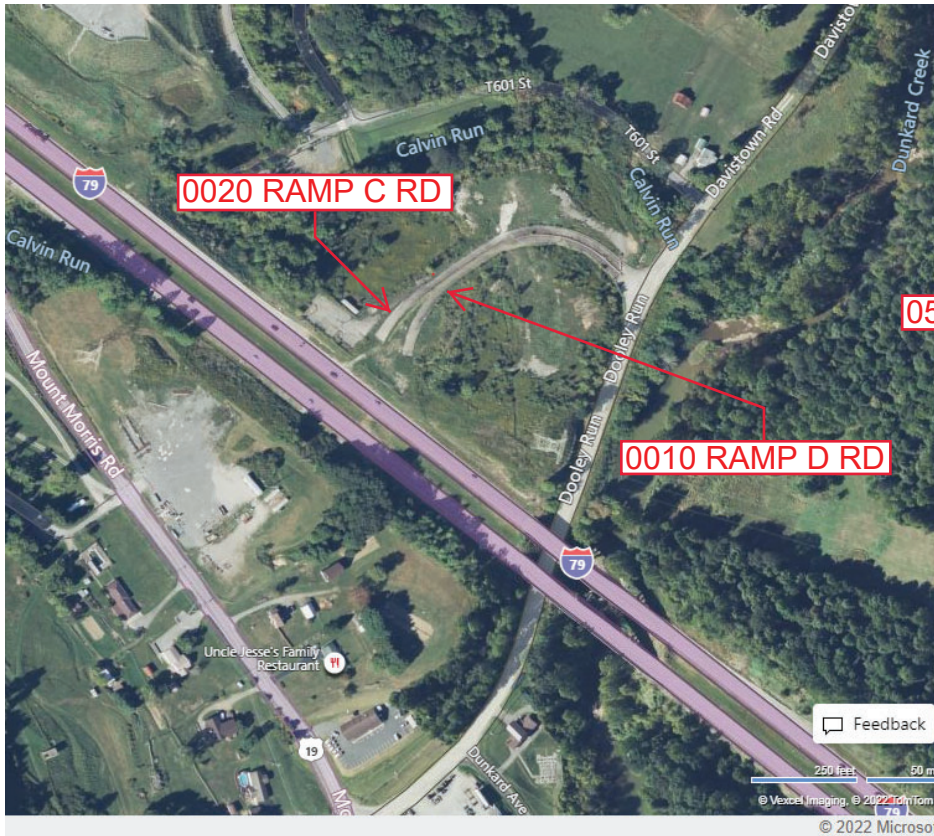
Ramp Segment Number and Ramp Segment Length Information:

Segment	Length	Segment	Length	Segment	Length	Segment	Length
0010	0750						
0020	0780						
0500	0220						
0510	0190						

Primary Route Interchange Exit Number

Secondary Route Interchange Exit Number

PennDOT Type 10 Map View:



Last Date Modified:

Jul 7, 2022